



**HAL**  
open science

# L1-Norm Regularized Deconvolution of Functional MRI BOLD Signal

Isa Costantini, Patryk Filipiak, Kostiantyn Maksymenko, Samuel Deslauriers-Gauthier, Rachid Deriche

► **To cite this version:**

Isa Costantini, Patryk Filipiak, Kostiantyn Maksymenko, Samuel Deslauriers-Gauthier, Rachid Deriche. L1-Norm Regularized Deconvolution of Functional MRI BOLD Signal. C@UCA, Jun 2018, Fréjus, France. hal-01855505

**HAL Id: hal-01855505**

**<https://inria.hal.science/hal-01855505v1>**

Submitted on 8 Aug 2018

**HAL** is a multi-disciplinary open access archive for the deposit and dissemination of scientific research documents, whether they are published or not. The documents may come from teaching and research institutions in France or abroad, or from public or private research centers.

L'archive ouverte pluridisciplinaire **HAL**, est destinée au dépôt et à la diffusion de documents scientifiques de niveau recherche, publiés ou non, émanant des établissements d'enseignement et de recherche français ou étrangers, des laboratoires publics ou privés.

# L1-Norm Regularized Deconvolution of Functional MRI BOLD Signal

Isa Costantini, Patryk Filipiak, Kostiantyn Maksymenko, Samuel Deslauriers-Gauthier, Rachid Deriche

Athena Project Team, Inria Sophia Antipolis - Méditerranée, Université Côte d'Azur, France

Contact - isa.costantini@inria.fr

<http://team.inria.fr/athena/>

**Abstract** - Deconvolution methods are used to denoise the blood oxygen level-dependent (BOLD) response, the signal that forms the basis of functional MRI (fMRI). In this work we propose a novel approach based on a temporal regularized deconvolution of the BOLD fMRI signal with the least absolute shrinkage and selection operator (LASSO) model, solved using the angle regression algorithm (LARS). In this way we were able to recover the underlying neurons activations and their dynamics.

## 1 Introduction

### Problem

Recover brain activations and their dynamics without a-priori hypotheses.

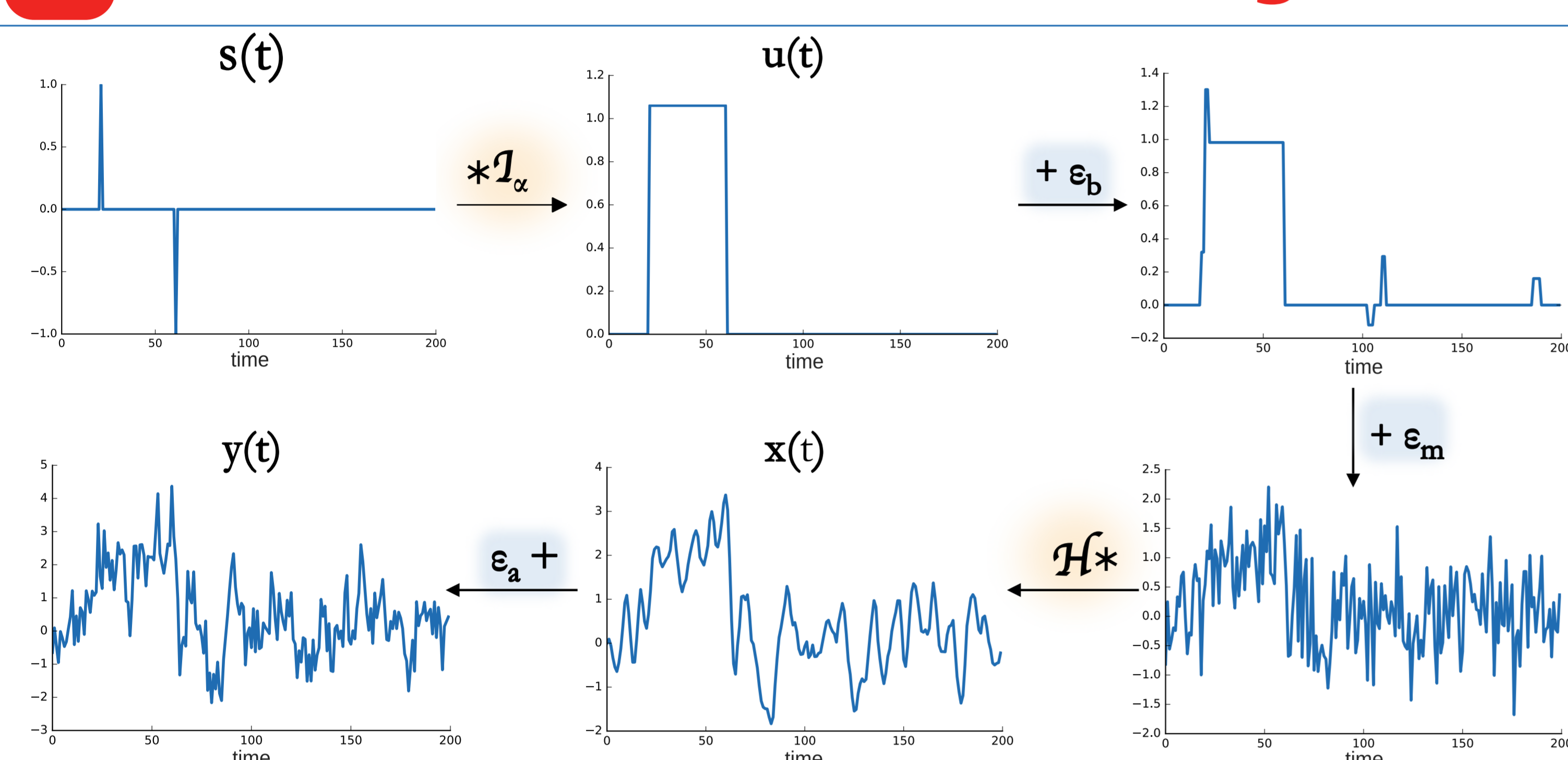
### Goal

Denoise the blood oxygen level dependent (**BOLD**) functional MRI (fMRI) **response**.

### Our method

Temporal regularized deconvolution of the BOLD signal with the least absolute shrinkage and selection operator (**LASSO**) model, solved using the Least-Angle Regression (**LARS**) algorithm.

## 2 Model of the BOLD fMRI signal



$s(t)$ : innovation signal  
 $u(t)$ : activity-inducing signal  
 $x(t)$ : activity-related signal  
 $\mathcal{H}$ : BOLD response  
 $\mathcal{J}_\alpha$ : Exponential accumulation function  
 $\mathcal{J}_\alpha(z) = S \left[ \frac{e^{-\alpha} z^{-1}}{(1 - e^{-\alpha} z^{-1})^2} - \frac{e^{-\alpha} z}{(1 - e^{-\alpha} z)^2} \right] \frac{1}{(1 - z^{-1})^2}$   
 $S$ : normalization term  
 $\alpha \in [0, 3]$

$\epsilon_b$ : block-type noise  
 $\epsilon_m$ : model random gaussian noise  
 $\epsilon_a$ : additive random gaussian noise

## 3 Regularization

We exploited the sparsity of the signal  $s(t)$  such that:

$$s^* = \operatorname{argmin}_s \left\{ \frac{1}{2n} \|y - \mathcal{A}s\|_2^2 + \lambda \|s\|_1 \right\}$$

$\mathcal{A}s = \mathcal{H} * \mathcal{J}_\alpha * s(t)$ ;  $\lambda$ : regularization parameter;  $n$ : signal length.

## 4 Solution of the inverse problem

1 LARS

All  $\lambda$  and their associated solutions  $s^*$  at once.

2 L-Curve

Optimal  $\lambda^*$  and its associated solution  $s^*$ .

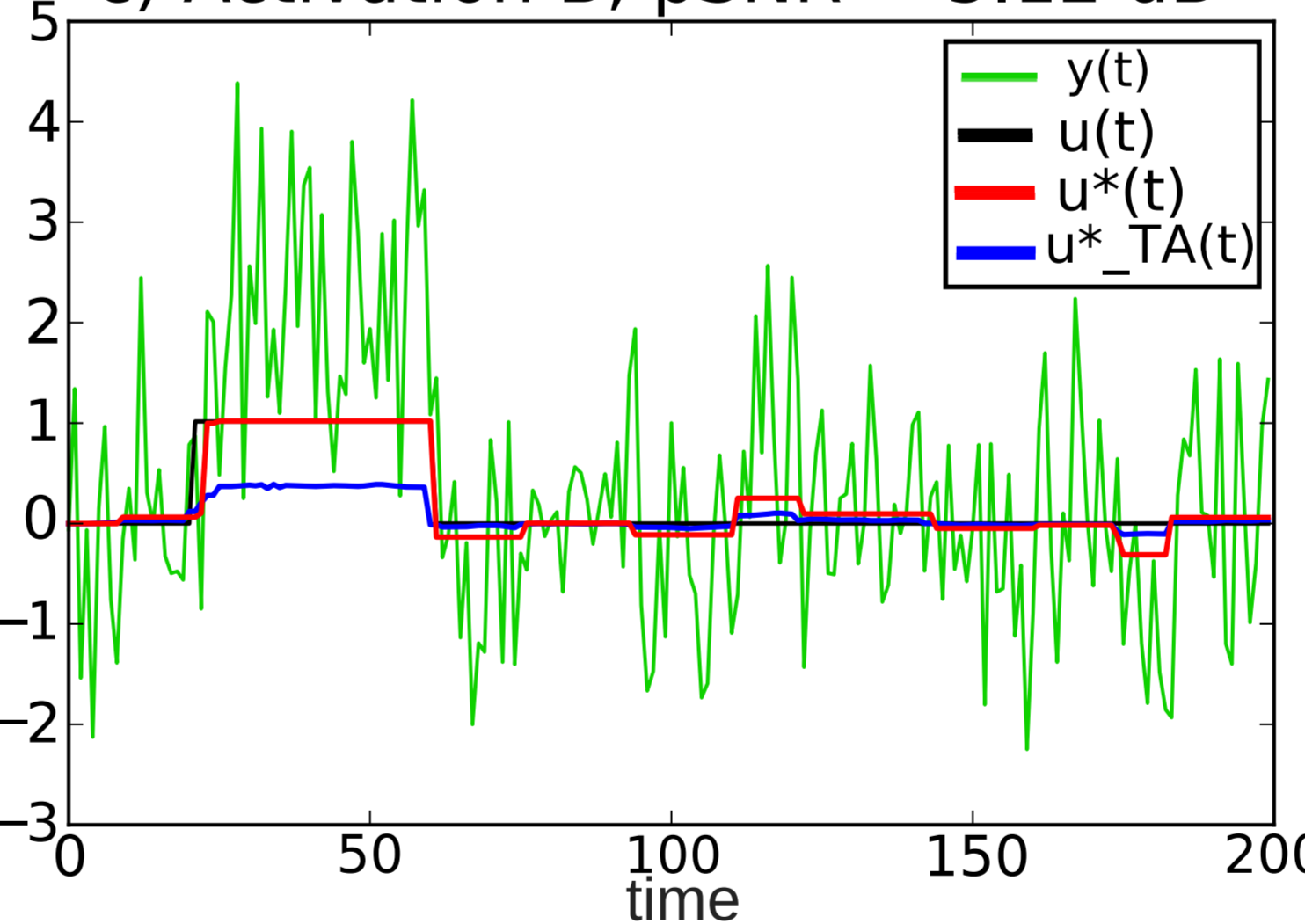
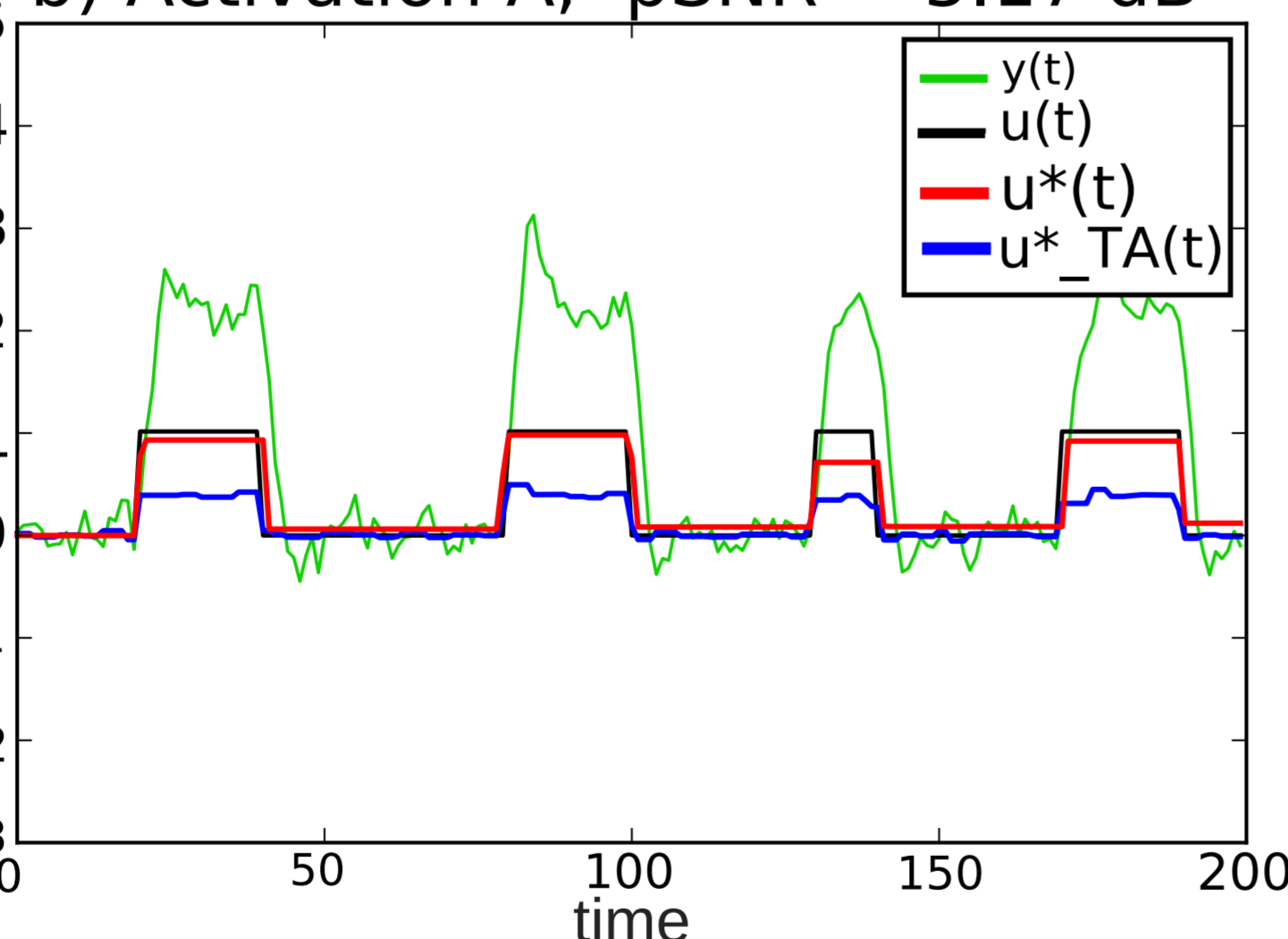
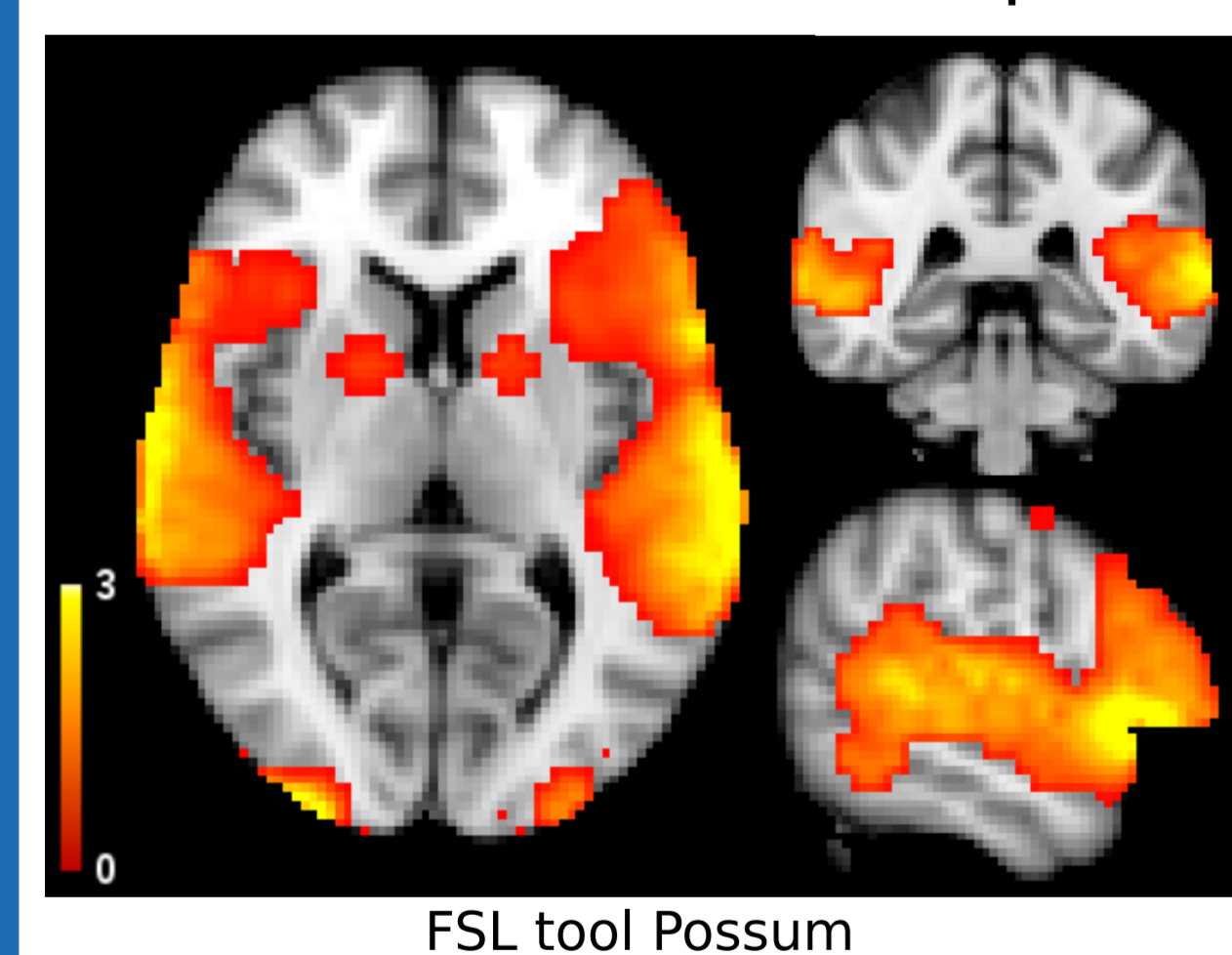
## 5 Simulations and Validation

### SIMULATED DATA

a) 3D activation map

b) Activation A; pSNR = 5.17 dB

c) Activation B; pSNR = 5.12 dB



a) The fMRI signals  $y(t)$  were simulated on a 3D activation map.

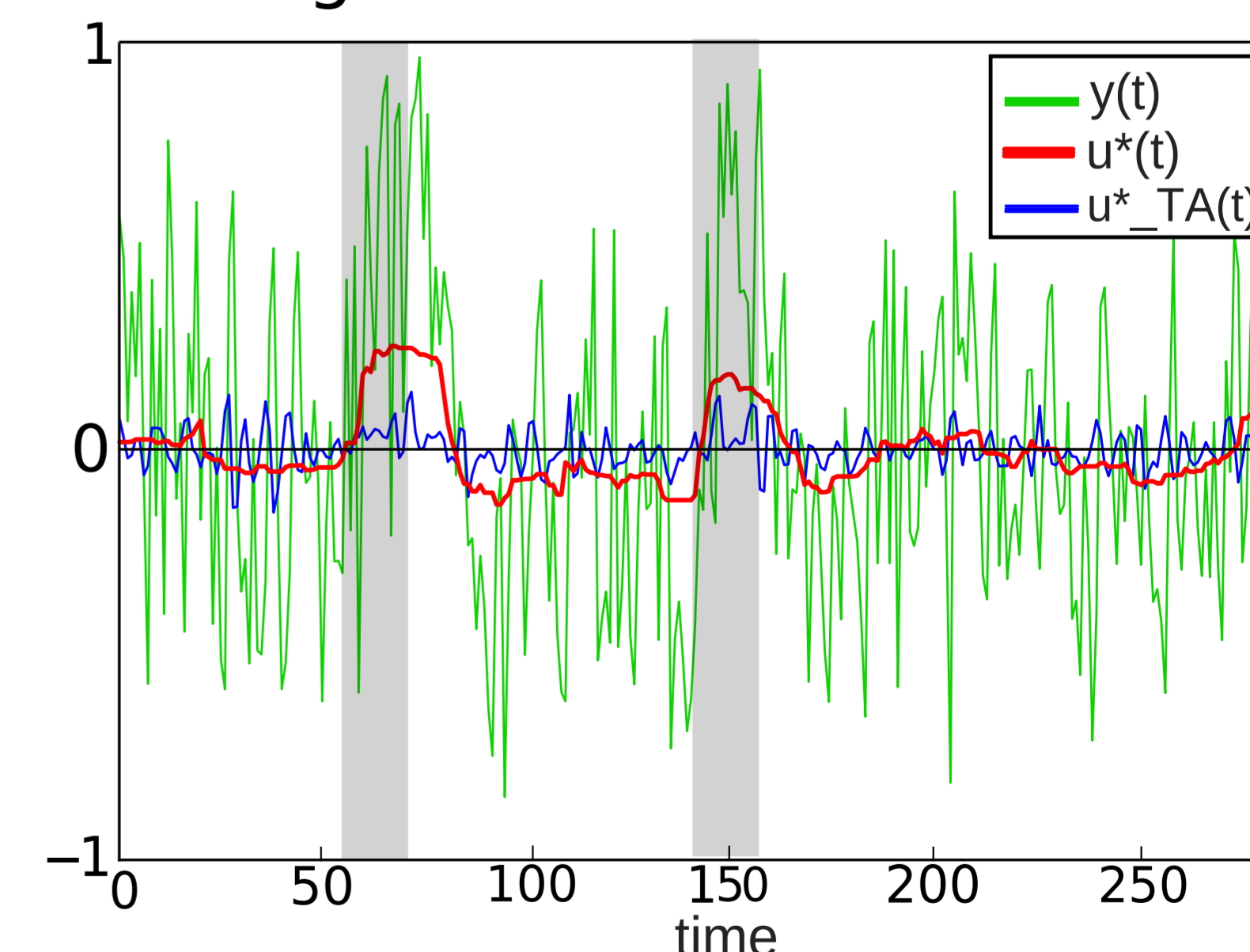
b, c) The reconstructed signals  $u^*(t)$  obtained with our approach (red) and the Total Activation tool<sup>[2]</sup> (TA, blue) are superimposed on the activation (black) and fMRI signal (green). Only the gray matter (GM) voxels were considered for analyses.

Summary of rooted MSEs and STDs.

Activation	A					B					
	pSNR [dB]	3.14	4.96	5.17	4	3.98	3.29	6.84	7.64	5.94	5.12
OUR $\alpha = 0.75$	rMSE	0.34	0.15	<b>0.11</b>	0.22	0.18	0.31	<b>0.1</b>	<b>0.05</b>	0.19	<b>0.14</b>
	rSTD	0.2	0.14	<b>0.13</b>	0.16	0.14	0.17	<b>0.07</b>	<b>0.05</b>	0.11	<b>0.08</b>
TA	rMSE	0.36	0.26	0.24	0.29	0.3	0.32	0.2	0.19	0.24	0.25
	rSTD	0.33	0.31	0.31	0.32	0.33	0.27	0.23	0.23	0.24	0.26

### REAL fMRI DATA

- Preprocessed HCP motor **task-fMRI data**.
- The reconstructed  $u^*(t)$  were averaged in a  $6 \times 6 \times 6 \text{ mm}^3$  ROI centered in BA4p.
- The gray areas represents the duration of the tongue movements.



## 6 Conclusion

- The **joint** use of the **LARS** algorithm and the **L-curve** allowed us to choose the optimal **solution** among all those **outputted at once**.
- We **decreased** the **computation time** and **avoided** a need of defining  **$\lambda$  a priori**.
- We improved brain dynamics recovery for future clinical applications.
- Future works will involve also a spatial regularization.

**Acknowledgements** - This work has received funding from the European Research Council (ERC) under the European Union's Horizon 2020 research and innovation program (ERC Advanced Grant agreement No 694665 : CoBCoM - Computational Brain Connectivity Mapping).

**References** - [1] Y. Farouj, Regularized spatiotemporal deconvolution of fMRI data using gray-matter constrained total variation. ISBI 2017. [2] F.I. Karahanolu, Total activation: fMRI deconvolution through spatio-temporal regularization. Neuroimage, 2013. [3] I. Khalidov, Activelets: Wavelets for sparse representation of hemodynamic responses. Signal Processing, 2011. [4] B. Efron, Least angle regression. The Annals of statistics, 2004. [5] D.C. Van Essen, The Wu-Minn HCP. Neuroimage, 2013. [6] V. Kiviniemi, ICApoment analysis of nondeterministic fmri signal sources, Neuroimage, 2003.