



Performance Evaluation of MongoDB I/O access patterns

Abdulqawi Saif, Lucas Nussbaum, Ye-Qiong Song

► To cite this version:

Abdulqawi Saif, Lucas Nussbaum, Ye-Qiong Song. Performance Evaluation of MongoDB I/O access patterns. CLOUD DAYS'2017 , Action transverse Virtualisation et Cloud du GdR RSD Sep 2017, Nancy, France. hal-01793479

HAL Id: hal-01793479

<https://inria.hal.science/hal-01793479>

Submitted on 16 May 2018

HAL is a multi-disciplinary open access archive for the deposit and dissemination of scientific research documents, whether they are published or not. The documents may come from teaching and research institutions in France or abroad, or from public or private research centers.

L'archive ouverte pluridisciplinaire **HAL**, est destinée au dépôt et à la diffusion de documents scientifiques de niveau recherche, publiés ou non, émanant des établissements d'enseignement et de recherche français ou étrangers, des laboratoires publics ou privés.

Public Domain

Performance Evaluation of *MongoDB* I/O access patterns

Abdulqawi Saif^{1,2,3,4}

abdulqawi.saif@loria.fr

Lucas Nussbaum^{1,2,3}

lucas.nussbaum@loria.fr

Ye-Qiong Song^{1,2,3}

ye-qion.song@loria.fr

¹Inria, Villers-les-Nancy, F-54600, France

²Université de Lorraine, LORIA, F-54500, France

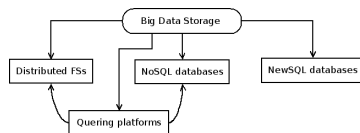
³CNRS, LORIA - UMR 7503, F-54500, France

⁴Xilopix SAS, F-88000, France

September 07, 2017
CLOUD DAYS'2017 - Nancy, France

NoSQL databases

- Principle category of Big Data Storage
- Overcome the scalability issues of SQL DBs
- Almost Cloud-friendly systems
- Different architectures and data-models



MongoDB

- A document-based NoSQL database (JSON documents)
- It uses *sharding* for distributing data
- Different tools for easy-deployment and migration (Ex. mongorestore, mongodump)
- Simple to use and fit well with various kinds of apps.

Querying data

- NoSQL flexibility: store data; think how to use after!
- No schema \Rightarrow not only one way to query the data

frequent need to create indexes on demand, on large-scale data!

Querying data

- NoSQL flexibility: store data; think how to use after!
- No schema \Rightarrow not only one way to query the data

frequent need to create indexes on demand, on large-scale data!

Problem statement

- MongoDB takes unjustified amount of time for making indexes on a pre-existed data

this problem could affect other NoSQL databases!

Benchmarking?

⇒ Tools such as *Yahoo! Cloud Serving Benchmarks (YCSB)* could:

- report high level metrics (Ex. throughput, latency, ...) ✓
- reduce the effort for comparing different systems ✓

But

- could not reflect the complexity of production-like data ☹
- are not suitable for explaining performance issues ☹

Research objectives

- Identifying the performance issue(s) of MongoDB while indexing data
- Introducing new experimental tools for explaining the causes of performance issue(s)

Datasets

Dataset type	(min, avrg, max) in Kb	N. of data units	Size (Gb)
SDU_1	(1, 3, 6)	20,000,000 docs	71

- Every doc x (int, date, 2 x string[min, max], array[1..4] x string[min, max])

MongoDB's storage engine: Wiredtiger

- The default storage engine for persistent data.
- `_id` for holding the collection's records
- collection is a [separate file](#)
- [Btree data structure](#) on disks
- Contiguous allocation on disk, but **unspanned**
- Default page size is 4 KB

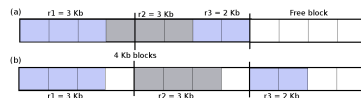


FIGURE – a) Spanned & b) Unspanned allocation

Experimental setup

- Experiments are performed on Grid'5000 testbed
Machines x 2 CPUs Intel Xeon E5-2630 v3, 8 cores/CPU, 128GB RAM, 2x558GB HDD, 10Gbps ethernet
- Ubuntu 14.04, Linux 4.9.13, MongoDB v3.4
- wiredTiger cache = 2Gb, replicas are disabled, sharding key is `_id`
- Considering only **hash sharding** in this talk \Rightarrow load balancing

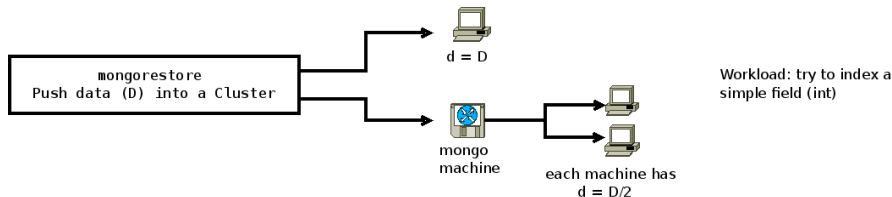
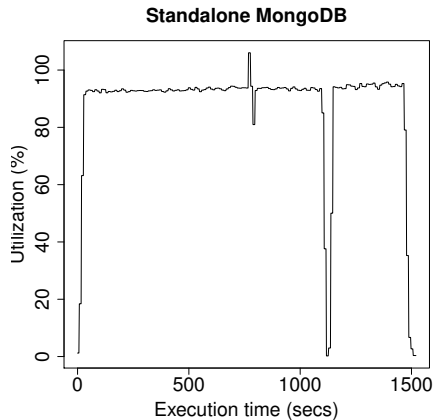
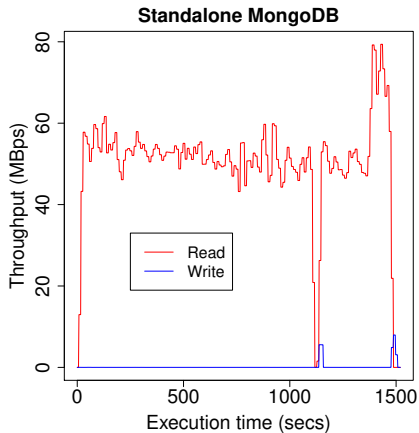
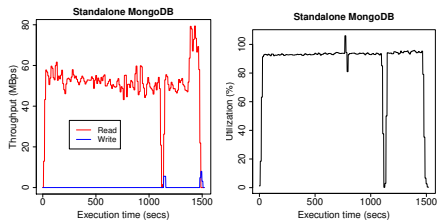


FIGURE – Experimental scenarios

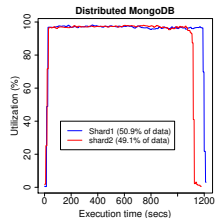
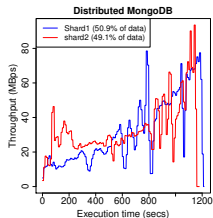
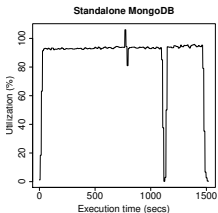
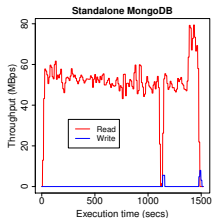
Experiments : Performance results with SDU_1



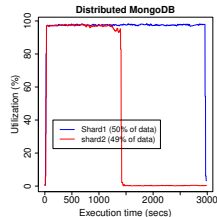
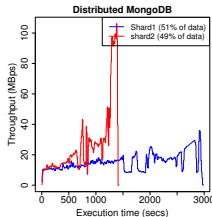
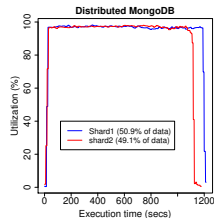
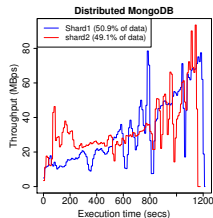
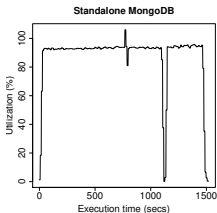
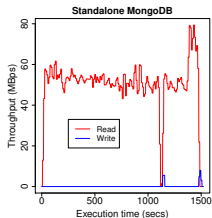
Experiments : Performance results with SDU_1



Experiments : Performance results with SDU_1

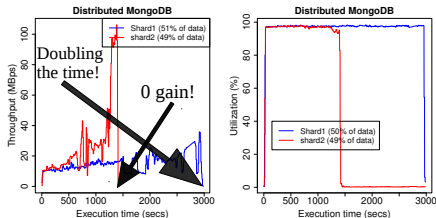
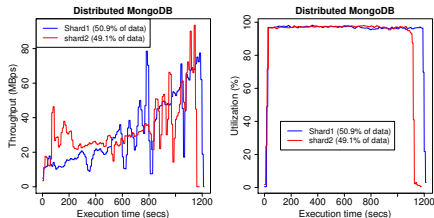
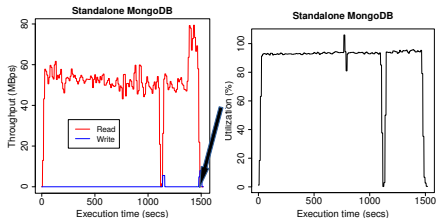


Experiments : Performance results with SDU_1



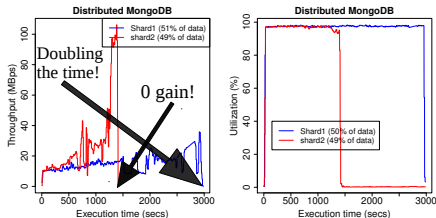
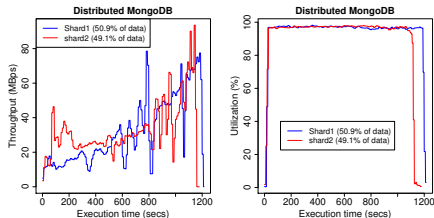
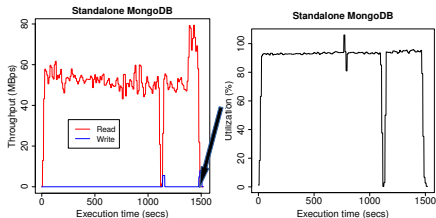
- ⇒ Indexing is a **100% read** workload
- ⇒ **I/O bounded** operations
- ⇒ **Data distribution issue**
- ⇒ Benchmarking is not sufficient to look beyond!

Experiments : Performance results with SDU_1



- ⇒ Indexing is a 100% read workload
- ⇒ I/O bounded operations
- ⇒ Data distribution issue
- ⇒ Benchmarking is not sufficient to look beyond!

Experiments : Performance results with SDU_1



- ⇒ Indexing is a 100% read workload
- ⇒ I/O bounded operations
- ⇒ Data distribution issue
- ⇒ Benchmarking is not sufficient to look beyond!

⇒ How to get the main reason behind these results?

extended Berkeley Packet Filter (eBPF)

- Connect to all Linux data sources : (Kprobes, Uprobes, tracepoints, ...)
- Almost no overhead (4 ns per syscall) [[A. Starovoitov](#)]
- In-kernel verifier, JIT-compilation, mapping (kernel-userspace exchange)
- Processing, tracing, filtering inside Linux kernel.
- Suitable to work with system in-production & real data.

BPF compiler collection (BCC)

- Like-standard frontend project for eBPF tools
- No more byte code! \Rightarrow write your BPF code in [restricted C](#)
- Write your frontend code using Python or Lua
- Towards script-driven tracing

Dynamic tracing with eBPF, our tool

An eBPF tool is built to evaluate the I/O patterns

- I/O access are no longer considered as black boxes !
- A generic tool, works on VFS layer
- It traces all I/O read requests
- It reports all files offsets, req. latencies & data size
- Could filter the results by file

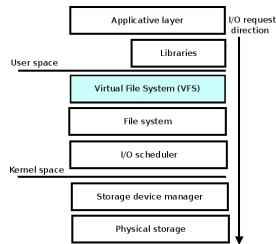
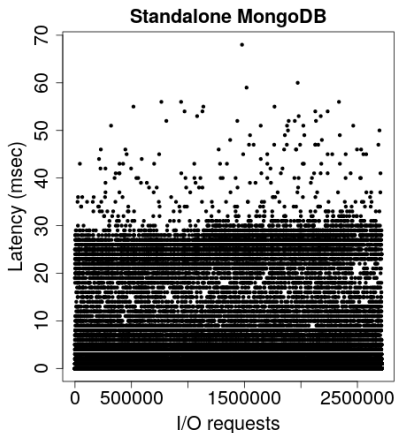
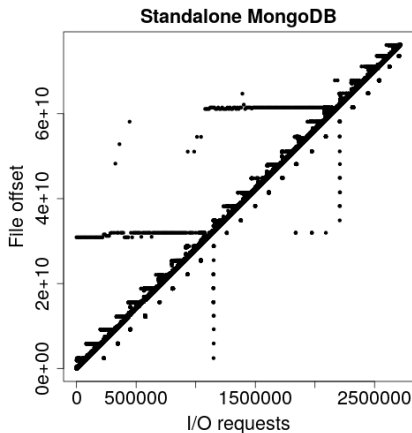


FIGURE – Linux abstracted I/O stack

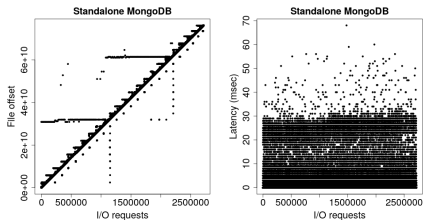
Tracing impact on our experiments

- Overhead cost is lower than 0.8% of execution time in all Experiments. 😊
- Basically, it depends on the number issued I/O requests.



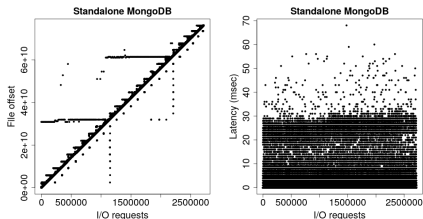
I/O access pattern and latency on standalone config.

Experiments : eBPF results with SDU_1

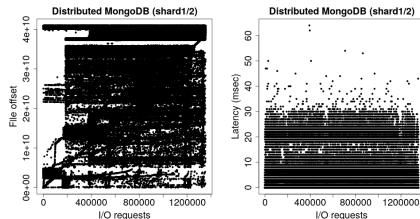


I/O access pattern and latency on standalone config.

Experiments : eBPF results with SDU_1

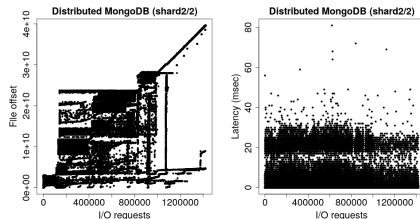


I/O access pattern and latency on standalone config.



First shard results in two-shards config (50.9% of data)

- ⇒ Acceptable access pattern on standalone
- ⇒ Almost **random access** on shards!
- ⇒ Data distribution is poorly done



Second shard results in two-shards config (49.1% of data)

The exact issue

- Mismatch between the scanning table vs data stored on disk

Collection `_ids`:
used by MongoDB process and WiredTiger

_id 1	_id 2	_id 3	_id 5
_id 7	_id 8	_id 10	_id 11
_id 19	_id 20	_id 27	...

Collection file on disk:
allocated regarding the key sharding (hashed `_id`)

_id 1	_id 3	_id 7	_id 5	_id 8	_id 10	_id 2	_id 19	_id 11	_id 20	_id 30	_id 27
rec 1	rec 2	rec 3								rec(n-1)	rec (n)

FIGURE – MongoDB scanning table Vs records order on the disk

The exact issue

- Mismatch between the scanning table vs data stored on disk

Collection `_ids`:
used by MongoDB process and WiredTiger

_id 1	_id 2	_id 3	_id 5
_id 7	_id 8	_id 10	_id 11
_id 19	_id 20	_id 27	...

1) Get this doc

Collection file on disk:
allocated regarding the key sharding (hashed `_id`)

_id 1	_id 3	_id 7	_id 5	_id 8	_id 10	_id 2	_id 19	_id 11	_id 20	_id 30	_id 27
rec 1	rec 2	rec 3								rec(n-1)	rec (n)

FIGURE – MongoDB scanning table Vs records order on the disk

The exact issue

- Mismatch between the scanning table vs data stored on disk

Collection `_ids`:
used by MongoDB process and WiredTiger

_id 1	_id 2	_id 3	_id 5
_id 7	_id 8	_id 10	_id 11
_id 19	_id 20	_id 27	...

1) Get this doc

Collection file on disk:
allocated regarding the key sharding (hashed `_id`)

_id 1	_id 3	_id 7	_id 5	_id 8	_id 10	_id 2	_id 19	_id 11	_id 20	_id 30	_id 27
rec 1	rec 2	rec 3								rec(n-1)	rec (n)

FIGURE – MongoDB scanning table Vs records order on the disk

The exact issue

- Mismatch between the scanning table vs data stored on disk

Collection `_ids`:
used by MongoDB process and WiredTiger

<code>_id 1</code>	<code>_id 2</code>	<code>_id 3</code>	<code>_id 5</code>
<code>_id 7</code>	<code>_id 8</code>	<code>_id 10</code>	<code>_id 11</code>
<code>_id 19</code>	<code>_id 20</code>	<code>_id 27</code>	...

- 1) Get this doc
- 2) Which doc is next?

Collection file on disk:
allocated regarding the key sharding (hashed `_id`)

<code>_id 1</code>	<code>_id 3</code>	<code>_id 7</code>	<code>_id 5</code>	<code>_id 8</code>	<code>_id 10</code>	<code>_id 2</code>	<code>_id 19</code>	<code>_id 11</code>	<code>_id 20</code>	<code>_id 30</code>	<code>_id 27</code>
rec 1	rec 2	rec 3								rec(n-1)	rec (n)

FIGURE – MongoDB scanning table Vs records order on the disk

The exact issue

- Mismatch between the scanning table vs data stored on disk

Collection `_ids`:
used by MongoDB process and WiredTiger

<code>_id 1</code>	<code>_id 2</code>	<code>_id 3</code>	<code>_id 5</code>
<code>_id 7</code>	<code>_id 8</code>	<code>_id 10</code>	<code>_id 11</code>
<code>_id 19</code>	<code>_id 20</code>	<code>_id 27</code>	...

- 1) Get this doc
- 2) Which doc is next?

Collection file on disk:
allocated regarding the key sharding (hashed `_id`)

<code>_id 1</code>	<code>_id 3</code>	<code>_id 7</code>	<code>_id 5</code>	<code>_id 8</code>	<code>_id 10</code>	<code>_id 2</code>	<code>_id 19</code>	<code>_id 11</code>	<code>_id 20</code>	<code>_id 30</code>	<code>_id 27</code>
rec 1	rec 2	rec 3								rec(n-1)	rec (n)

FIGURE – MongoDB scanning table Vs records order on the disk

The exact issue

- Mismatch between the scanning table vs data stored on disk

Collection `_ids`:
used by MongoDB process and WiredTiger

_id 1	_id 2	_id 3	_id 5
_id 7	_id 8	_id 10	_id 11
_id 19	_id 20	_id 27	...

1) Get this doc

Collection file on disk:
allocated regarding the key sharding (hashed `_id`)

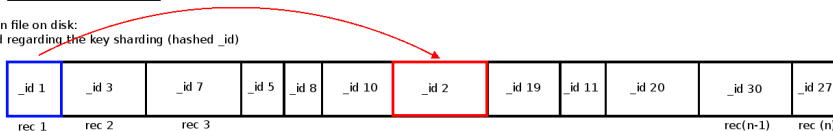


FIGURE – MongoDB scanning table Vs records order on the disk

The exact issue

- Mismatch between the scanning table vs data stored on disk

Collection `_ids`:
used by MongoDB process and WiredTiger

<code>_id 1</code>	<code>_id 2</code>	<code>_id 3</code>	<code>_id 5</code>
<code>_id 7</code>	<code>_id 8</code>	<code>_id 10</code>	<code>_id 11</code>
<code>_id 19</code>	<code>_id 20</code>	<code>_id 27</code>	...

- 1) Get this doc
- 2) Which doc is next?

Collection file on disk:
allocated regarding the key sharding (hashed `_id`)

<code>_id 1</code>	<code>_id 3</code>	<code>_id 7</code>	<code>_id 5</code>	<code>_id 8</code>	<code>_id 10</code>	<code>_id 2</code>	<code>_id 19</code>	<code>_id 11</code>	<code>_id 20</code>	<code>_id 30</code>	<code>_id 27</code>
rec 1	rec 2	rec 3								rec(n-1)	rec (n)

FIGURE – MongoDB scanning table Vs records order on the disk

The exact issue

- Mismatch between the scanning table vs data stored on disk

Collection _ids:
used by MongoDB process and WiredTiger

_id 1	_id 2	_id 3	_id 5
_id 7	_id 8	_id 10	_id 11
_id 19	_id 20	_id 27	...

1) Get this doc

Collection file on disk:
allocated regarding the key sharing (hashed _id)

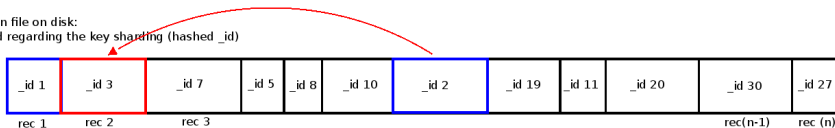


FIGURE – MongoDB scanning table Vs records order on the disk

The exact issue

- Mismatch between the scanning table vs data stored on disk

Collection `_ids`:
used by MongoDB process and WiredTiger

<code>_id 1</code>	<code>_id 2</code>	<code>_id 3</code>	<code>_id 5</code>
<code>_id 7</code>	<code>_id 8</code>	<code>_id 10</code>	<code>_id 11</code>
<code>_id 19</code>	<code>_id 20</code>	<code>_id 27</code>	...

- 1) Get this doc
- 2) Which doc is next?

Collection file on disk:
allocated regarding the key sharding (hashed `_id`)

<code>_id 1</code>	<code>_id 3</code>	<code>_id 7</code>	<code>_id 5</code>	<code>_id 8</code>	<code>_id 10</code>	<code>_id 2</code>	<code>_id 19</code>	<code>_id 11</code>	<code>_id 20</code>	<code>_id 30</code>	<code>_id 27</code>
rec 1	rec 2	rec 3								rec(n-1)	rec (n)

FIGURE – MongoDB scanning table Vs records order on the disk

The exact issue

- Mismatch between the scanning table vs data stored on disk

Collection _ids:
used by MongoDB process and WiredTiger

_id 1	_id 2	_id 3	_id 5
_id 7	_id 8	_id 10	_id 11
_id 19	_id 20	_id 27	...

1) Get this doc

Collection file on disk:
allocated regarding the key sharding (hashed _id)

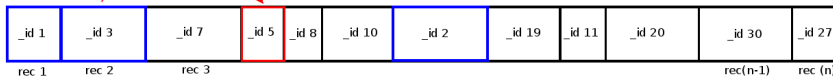


FIGURE – MongoDB scanning table Vs records order on the disk

The exact issue

- Mismatch between the scanning table vs data stored on disk

Collection `_ids`:
used by MongoDB process and WiredTiger

<code>_id 1</code>	<code>_id 2</code>	<code>_id 3</code>	<code>_id 5</code>
<code>_id 7</code>	<code>_id 8</code>	<code>_id 10</code>	<code>_id 11</code>
<code>_id 19</code>	<code>_id 20</code>	<code>_id 27</code>	...

- 1) Get this doc
- 2) Which doc is next?

Collection file on disk:
allocated regarding the key sharding (hashed `_id`)

<code>_id 1</code>	<code>_id 3</code>	<code>_id 7</code>	<code>_id 5</code>	<code>_id 8</code>	<code>_id 10</code>	<code>_id 2</code>	<code>_id 19</code>	<code>_id 11</code>	<code>_id 20</code>	<code>_id 30</code>	<code>_id 27</code>
rec 1	rec 2	rec 3								rec(n-1)	rec (n)

FIGURE – MongoDB scanning table Vs records order on the disk

The exact issue

- Mismatch between the scanning table vs data stored on disk

Collection _ids:
used by MongoDB process and WiredTiger

_id 1	_id 2	_id 3	_id 5
_id 7	_id 8	_id 10	_id 11
_id 19	_id 20	_id 27	...

1) Get this doc

Collection file on disk:
allocated regarding the key sharding (hashed _id)

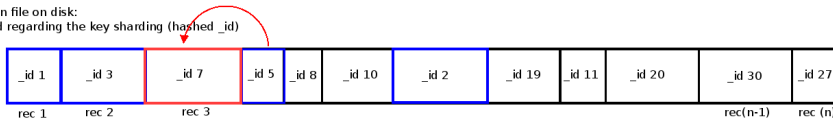


FIGURE – MongoDB scanning table Vs records order on the disk

The exact issue

- Mismatch between the scanning table vs data stored on disk

Collection `_ids`:
used by MongoDB process and WiredTiger

_id 1	_id 2	_id 3	_id 5
_id 7	_id 8	_id 10	_id 11
_id 19	_id 20	_id 27	...

- 1) Get this doc
- 2) Which doc is next?

Collection file on disk:
allocated regarding the key sharding (hashed `_id`)

_id 1	_id 3	_id 7	_id 5	_id 8	_id 10	_id 2	_id 19	_id 11	_id 20	_id 30	_id 27
rec 1	rec 2	rec 3								rec(n-1)	rec (n)

FIGURE – MongoDB scanning table Vs records order on the disk

The exact issue

- Mismatch between the scanning table vs data stored on disk

Collection _ids:
used by MongoDB process and WiredTiger

_id 1	_id 2	_id 3	_id 5
_id 7	_id 8	_id 10	_id 11
_id 19	_id 20	_id 27	...

1) Get this doc

Collection file on disk:
allocated regarding the key sharding (hashed _id)

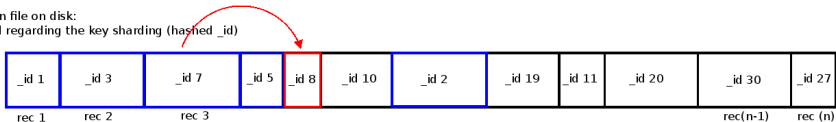


FIGURE – MongoDB scanning table Vs records order on the disk

The exact issue

- Mismatch between the scanning table vs data stored on disk

Collection `_ids`:
used by MongoDB process and WiredTiger

<code>_id 1</code>	<code>_id 2</code>	<code>_id 3</code>	<code>_id 5</code>
<code>_id 7</code>	<code>_id 8</code>	<code>_id 10</code>	<code>_id 11</code>
<code>_id 19</code>	<code>_id 20</code>	<code>_id 27</code>	...

- 1) Get this doc
- 2) Which doc is next?

Collection file on disk:
allocated regarding the key sharding (hashed `_id`)

<code>_id 1</code>	<code>_id 3</code>	<code>_id 7</code>	<code>_id 5</code>	<code>_id 8</code>	<code>_id 10</code>	<code>_id 2</code>	<code>_id 19</code>	<code>_id 11</code>	<code>_id 20</code>	<code>_id 30</code>	<code>_id 27</code>
rec 1	rec 2	rec 3								rec(n-1)	rec (n)

FIGURE – MongoDB scanning table Vs records order on the disk

The exact issue

- Mismatch between the scanning table vs data stored on disk

Collection `_ids`:
used by MongoDB process and WiredTiger

_id 1	_id 2	_id 3	_id 5
_id 7	_id 8	_id 10	_id 11
_id 19	_id 20	_id 27	...

1) Get this doc

Collection file on disk:
allocated regarding the key sharding (hashed `_id`)

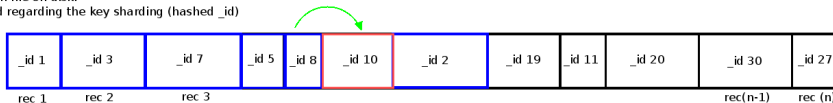


FIGURE – MongoDB scanning table Vs records order on the disk

The exact issue

- Mismatch between the scanning table vs data stored on disk

Collection `_ids`:
used by MongoDB process and WiredTiger

_id 1	_id 2	_id 3	_id 5
_id 7	_id 8	_id 10	_id 11
_id 19	_id 20	_id 27	...

- 1) Get this doc
- 2) Which doc is next?

Collection file on disk:
allocated regarding the key sharding (hashed `_id`)

_id 1	_id 3	_id 7	_id 5	_id 8	_id 10	_id 2	_id 19	_id 11	_id 20	_id 30	_id 27
rec 1	rec 2	rec 3								rec(n-1)	rec (n)

FIGURE – MongoDB scanning table Vs records order on the disk

The exact issue

- Mismatch between the scanning table vs data stored on disk

Collection `_ids`:
used by MongoDB process and WiredTiger

_id 1	_id 2	_id 3	_id 5
_id 7	_id 8	_id 10	_id 11
_id 19	_id 20	_id 27	...

1) Get this doc

Collection file on disk:
allocated regarding the key sharding (hashed `_id`)

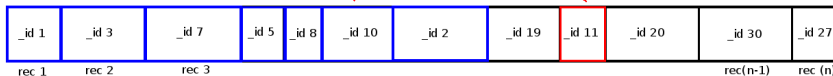


FIGURE – MongoDB scanning table Vs records order on the disk

The exact issue

- Mismatch between the scanning table vs data stored on disk

Collection `_ids`:
used by MongoDB process and WiredTiger

_id 1	_id 2	_id 3	_id 5
_id 7	_id 8	_id 10	_id 11
_id 19	_id 20	_id 27	...

- 1) Get this doc
- 2) Which doc is next?

Collection file on disk:
allocated regarding the key sharding (hashed `_id`)

_id 1	_id 3	_id 7	_id 5	_id 8	_id 10	_id 2	_id 19	_id 11	_id 20	_id 30	_id 27
rec 1	rec 2	rec 3								rec(n-1)	rec (n)

FIGURE – MongoDB scanning table Vs records order on the disk

The exact issue

- Mismatch between the scanning table vs data stored on disk

Collection `_ids`:
used by MongoDB process and WiredTiger

_id 1	_id 2	_id 3	_id 5
_id 7	_id 8	_id 10	_id 11
_id 19	_id 20	_id 27	...

1) Get this doc

Collection file on disk:
allocated regarding the key sharding (hashed `_id`)

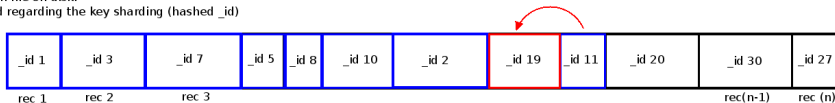


FIGURE – MongoDB scanning table Vs records order on the disk

The exact issue

- Mismatch between the scanning table vs data stored on disk

Collection `_ids`:
used by MongoDB process and WiredTiger

_id 1	_id 2	_id 3	_id 5
_id 7	_id 8	_id 10	_id 11
_id 19	_id 20	_id 27	...

- 1) Get this doc
- 2) Which doc is next?

Collection file on disk:
allocated regarding the key sharding (hashed `_id`)

_id 1	_id 3	_id 7	_id 5	_id 8	_id 10	_id 2	_id 19	_id 11	_id 20	_id 30	_id 27
rec 1	rec 2	rec 3								rec(n-1)	rec (n)

FIGURE – MongoDB scanning table Vs records order on the disk

The exact issue

- Mismatch between the scanning table vs data stored on disk

Collection `_ids`:
used by MongoDB process and WiredTiger

_id 1	_id 2	_id 3	_id 5
_id 7	_id 8	_id 10	_id 11
_id 19	_id 20	_id 27	...

1) Get this doc

Collection file on disk:
allocated regarding the key sharding (hashed `_id`)

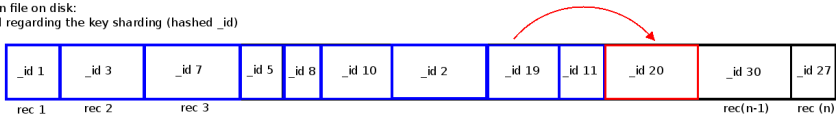


FIGURE – MongoDB scanning table Vs records order on the disk

The exact issue

- Mismatch between the scanning table vs data stored on disk

Collection `_ids`:
used by MongoDB process and WiredTiger

_id 1	_id 2	_id 3	_id 5
_id 7	_id 8	_id 10	_id 11
_id 19	_id 20	_id 27	...

1) Get this doc

Collection file on disk:
allocated regarding the key sharding (hashed `_id`)

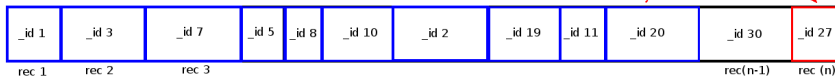


FIGURE – MongoDB scanning table Vs records order on the disk

The exact issue

- Mismatch between the scanning table vs data stored on disk

Collection `_ids`:
used by MongoDB process and WiredTiger

_id 1	_id 2	_id 3	_id 5
_id 7	_id 8	_id 10	_id 11
_id 19	_id 20	_id 27	...

- 1) Get this doc
- 2) Which doc is next?

Collection file on disk:
allocated regarding the key sharding (hashed `_id`)

_id 1	_id 3	_id 7	_id 5	_id 8	_id 10	_id 2	_id 19	_id 11	_id 20	_id 30	_id 27
rec 1	rec 2	rec 3								rec(n-1)	rec (n)

FIGURE – MongoDB scanning table Vs records order on the disk

MongoDB integrated tools?

- RepairDatabase \Rightarrow verifying the coherence of data. 😞
- Rebuilding the `_id` index \Rightarrow consider the pre-existed ordering. 😞

MongoDB integrated tools?

- RepairDatabase \Rightarrow verifying the coherence of data. 😞
- Rebuilding the `_id` index \Rightarrow consider the pre-existed ordering. 😞

Our ad-hoc solution

- recreating the `_id` index regarding how the data is stored on disk.

Experiments : an ad hoc solution

MongoDB integrated tools?

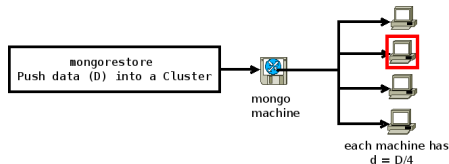
- RepairDatabase \Rightarrow verifying the coherence of data. 😞
- Rebuilding the `_id` index \Rightarrow consider the pre-existed ordering. 😞

Our ad-hoc solution

- recreating the `_id` index regarding how the data is stored on disk.

The worst case example!

- Data on one shard in a **four conf. experiment** (1/4 out of data)
- indexing time : Doubling the indexing time of the **whole data** on standalone config (**3000 sec**).
- indexing time after : six time faster! (**about 500 sec**)



Experiments : an ad hoc solution

MongoDB integrated tools?

- RepairDatabase \Rightarrow verifying the coherence of data. 😞
- Rebuilding the `_id` index \Rightarrow consider the pre-existed ordering. 😞

Our ad-hoc solution

- recreating the `_id` index regarding how the data is stored on disk.

The worst case example!

- Data on one shard in a **four conf. experiment** (1/4 out of data)
- indexing time : Doubling the indexing time of the **whole data** on standalone config (**3000 sec**).
- indexing time after : six time faster! (**about 500 sec**)

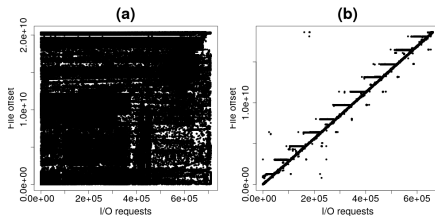


FIGURE – I/O access pattern a) before & b) after applying the solution

Conclusion

- A performance study on MongoDB I/O access pattern is done
- A generic tool for testing I/O access patterns is introduced
- An ad hoc solution is proposed to correct MongoDB I/O access patterns
- We showed how a trivial data management issue could affect the performance
- We demonstrated how it is worthy to use dynamic tracing to go beyond benchmarking results

Future works

- Including other solutions like Cassandra in those tests.
- Trying to enrich eBPF tools which explain specific issues.

Conclusion

- A performance study on MongoDB I/O access pattern is done
- A generic tool for testing I/O access patterns is introduced
- An ad hoc solution is proposed to correct MongoDB I/O access patterns
- We showed how a trivial data management issue could affect the performance
- We demonstrated how it is worthy to use dynamic tracing to go beyond benchmarking results

Future works

- Including other solutions like Cassandra in those tests.
- Trying to enrich eBPF tools which explain specific issues.

Questions are welcome !