



**HAL**  
open science

## **Impact FD: An Unreliable Failure Detector Based on Process Relevance and Confidence in the System**

Anubis Graciela de Moraes Rossetto, Claudio Geyer, Luciana Arantes, Pierre Sens

► **To cite this version:**

Anubis Graciela de Moraes Rossetto, Claudio Geyer, Luciana Arantes, Pierre Sens. Impact FD: An Unreliable Failure Detector Based on Process Relevance and Confidence in the System. The Computer Journal, In press. hal-01793311

**HAL Id: hal-01793311**

**<https://inria.hal.science/hal-01793311>**

Submitted on 16 May 2018

**HAL** is a multi-disciplinary open access archive for the deposit and dissemination of scientific research documents, whether they are published or not. The documents may come from teaching and research institutions in France or abroad, or from public or private research centers.

L'archive ouverte pluridisciplinaire **HAL**, est destinée au dépôt et à la diffusion de documents scientifiques de niveau recherche, publiés ou non, émanant des établissements d'enseignement et de recherche français ou étrangers, des laboratoires publics ou privés.

---

# Impact FD: An Unreliable Failure Detector Based on Process Relevance and Confidence in the System

ANUBIS GRACIELA DE MORAES ROSSETTO<sup>1</sup>, CLÁUDIO F. R. GEYER<sup>2</sup>, LUCIANA ARANTES<sup>3</sup> AND PIERRE SENS<sup>3</sup>

<sup>1</sup>*Federal Institute Sul-rio-grandense (IFSUL), Passo Fundo, Brasil*

<sup>2</sup>*Institute of Informatics, Fed. Univ. of Rio Grande do Sul (UFRGS) Porto Alegre, Brazil*

<sup>3</sup>*Sorbonne Université, CNRS, Inria, LIP6, Paris, France*

*Email: anubisrossetto@gmail.com*

---

**This paper presents a new unreliable failure detector, called the *Impact* failure detector (FD) that, contrarily to the majority of traditional FDs, outputs a *trust level* value which expresses the degree of confidence in the system. An *impact factor* is assigned to each process and the *trust level* is equal to the sum of the impact factors of the processes not suspected of failure. Moreover, a *threshold* parameter defines a lower bound value for the *trust level*, over which the confidence in the system is ensured. In particular, we defined a *flexibility* property that denotes the capacity of the Impact FD to tolerate a certain margin of failures or false suspicions, i.e., its capacity of considering different sets of responses that lead the system to trusted states. The Impact FD is suitable for systems that present node redundancy, heterogeneity of nodes, clustering feature, and allow a margin of failures which does not degrade the confidence in the system. The paper also includes a timer-based distributed algorithm which implements an Impact FD, as well as its proof of correctness, for systems whose links are *lossy asynchronous* or for those whose all (or some) links are *eventually timely*. Performance evaluation results, based on PlanetLab [1] traces, confirm the degree of flexible applicability of our failure detector and that, due to the accepted margin of failure, both failures and false suspicions are more tolerated when compared to traditional unreliable failure detectors.**

*Keywords: Fault Tolerance; Unreliable Failure Detector; Impact Factor; Trust Level of the System; Process Relevance; Margin of Failures*

---

## 1. INTRODUCTION

In distributed systems, failures can occur and the detection of them is a crucial task in the design of fault tolerant distributed systems or applications. On the other hand, in asynchronous systems there exist no bounds on message transmission neither on processes speed. Therefore, detection of crashed processes is particularly difficult in those systems since it is impossible to know whether a process has really failed or if it and/or the network communication are just slow. Due to this lack of delay bounds, it is well-known that consensus problem cannot be solved deterministically in an asynchronous system subject to even a single crash failure [2].

To circumvent such an impossibility and give support to the development of fault tolerant distributed systems, Chandra and Toueg proposed in [3] the unreliable failure detector (FD) abstraction. An unreliable FD can be seen as an oracle that gives (not always correct) information about process failures. Many current FDs are based on

a binary model, in which monitored processes are either “trusted” or “suspected”. Thus, most of existing FDs, such as those defined in [3] [4], output the set of processes that is currently suspected to have crashed. According to the type and the quality of this information, several failure detector classes have been proposed.

This paper presents a new unreliable failure detector, denoted the *Impact* failure detector. A preliminary proposal of it was presented in [5]. Contrarily to the majority of existing unreliable failure detectors, the Impact FD provides an output that expresses the trust of the FD with regard to the system (or set of processes) as a whole and not to each process individually. A system is considered “trusted” if it behaves correctly for a specific purpose even in the face of failures, i.e., the system is able to maintain the normal functionality.

The conception of the Impact FD was inspired on systems that have the following features: (1) applications that execute on them are interested on information

about the reliability of the system as a whole and can tolerate a certain margin of failures. The latter may vary depending on the environment, situation, or context, such as systems that provide redundancy of software/hardware; (2) systems that organize nodes with some common characteristic in groups; (3) systems where the nodes can have different importance (relevance) or roles and, thus, their failures may have distinct impact on the system. Systems that present node redundancy, heterogeneity of nodes, clustering feature, and allow a margin of failures which does not degrade the confidence in the system can, thus, benefit from the Impact FD and its configuration choices. They have motivated our work. In Section 2, there are some examples of such systems and the advantages, in these cases, of using the Impact FD instead of traditional FDs.

The Impact FD outputs a *trust level* related to a given set of processes  $S$  of the monitored system. We, thus, denote FD  $(I_p^S)$  the Impact failure detector module of process  $p$  that monitors the processes of  $S$ . When invoked in  $p$ , the Impact FD  $(I_p^S)$  returns the *trust\_level* value which expresses the confidence that  $p$  has in set  $S$ . To this end, an *impact* value, defined by the user, is assigned to each process of  $S$  and the *trust\_level* is equal to the sum of the impact factors of the trusted nodes, i.e., those not suspected of failure by  $p$ . Furthermore, a *threshold* parameter defines a lower bound for the *trust level*, over which the confidence degree on  $S$  is ensured. Hence, by comparing the *trust\_level* with the *threshold*, it is possible to determine whether  $S$  is currently “trusted” or “untrusted” by  $p$ . The impact factor indicates the relative importance of the process in the set  $S$ , while the *threshold* offers a degree of flexibility for failures and false suspicions, thus allowing a higher tolerance in case of instability in the system. For instance, in an unstable network, although there might be many false suspicions, depending on the value assigned to the threshold, the system might remain trustworthy [6]. We should also point out that the Impact FD configuration allows nodes of  $S$  to be grouped into subsets and threshold values can be defined for each of these subsets. In addition, similarly to the traditional FD, several classes of Impact FDs can be defined depending on their capability of suspecting faulty processes (*completeness* property) and of not suspecting correct processes (*accuracy* property).

Arguing that traditional approaches which assume a maximum number of failures  $f$  may lead to suboptimal solutions, such as in replication protocols where the number of replicas depend on  $f$ , Junqueira, Marzullo, Herlihy and Penso proposed in [7] the *survivor set* approach, i.e., the unique collection of minimal sets of correct processes over all executions, each set containing all correct processes of some execution. The principle of the Impact FD also follows the authors’ argument: the *threshold* expresses certain margin of failures or false suspicions and the number of failures tolerated by the system is not necessarily fixed but depends on sets of correct processes, their respective impact factors, and

*threshold* values. Therefore, the Impact FD presents, what we denoted, the *flexibility property*. The latter expresses its capacity of considering different sets of responses that lead  $S$  to trusted states. In this context, we also define in this work, two properties,  $PR(IT)_p^S$  and  $PR(\diamond IT)_p^S$ , which characterize the minimum necessary stability condition of  $S$  that ensures  $p$ ’s confidence (or eventual confidence) in  $S$ . In other words, if  $PR(IT)_p^S$  (resp.,  $PR(\diamond IT)_p^S$ ) holds, the system  $S$  is always (resp., eventually always) trusted by the monitor process  $p$ . Note that the Impact FD *threshold/impact factor* approach is strictly more powerful than the maximum number of failures  $f$  approach since the latter can be expressed with the former but not the other way around.

We also present in this paper a *timer-based* distributed algorithm (and its proof of correctness) which implements a Impact FD. It uses the algorithm proposed by [8] to estimate heartbeat message arrivals from monitored processes. The implementation can be applied to systems whose links are *lossy asynchronous* or those whose all (or some) of them have eventually a bounded synchronous behavior ( $\diamond$ -*timely*) [6]. Then, based on real trace files collected from nodes of PlanetLab [1], we conducted extensive experiments in order to evaluate the Impact FD. These trace files contained a large amount of data related to the sending and reception of heartbeat messages, including unstable periods of links and message, characterizing, therefore, distributed systems that use FDs based on heartbeat. The testbed of the experiments comprises various configurations with different threshold values, impact factor of nodes, and types of links. For evaluation sake, we used three of the QoS metrics proposed in [8]: *detection time*, *average mistake rate*, and *query accuracy probability*. The Impact FD implementation was also compared to a tradition timer-based FD one that outputs information about failure suspicions of each monitored process. Performance evaluation results confirm the degree of flexible applicability of the Impact FD, that both failures and false suspicions are more tolerated than in traditional FDs, and that the former presents better QoS than the latter if the application is interested in the degree of confidence in the system (trust level) as a whole.

The rest of this paper is structured as follows. Section 2 describes some distributed systems for which the Impact FD is suitable. Section 3 outlines some basic concepts of unreliable failure detectors and Section 4 describes our system models. Section 5 presents the Impact failure detector, its characteristics, and some of its properties while in Section 6, we propose a timer-based algorithm that implements the Impact FD considering different systems, defined by the type of their links. The section also includes the proof of correctness of the algorithm. Section 7 presents a set of evaluation results obtained from experiments conducted with real traces on PlanetLab [1]. Section 8 discusses some existing related work. Finally, Section 9 concludes the paper and outlines some of our future research directions.

## 2. MOTIVATION SCENARIOS

Our proposed approach can be applied to different distributed scenarios and is flexible enough to meet different needs. It is quite suitable for environments where there is node redundancy or nodes with different capabilities. We should point out that both the *impact factor* and the *threshold* render the estimation of the confidence of  $S$  more flexible. Hence, there might be a situation where some processes in  $S$  are faulty or suspected of being faulty but  $S$  is still considered to be trusted. Furthermore, the Impact FD can easily be configured and adapted to the needs of the application or system requirements. For instance, the application may require a stricter monitoring of nodes during the night than during the day. For this kind of adaptation, it is only necessary to adjust the threshold.

The following examples show some scenarios to which the Impact FD can be applied:

**Scenario 1:** Ubiquitous Wireless Sensor Networks (WSNs) are usually deployed to monitor physical conditions in various places such as geographical regions, agriculture lands, battlefields, etc. In WSNs, there is a wide range of sensor nodes with different battery resources and communication or computation capabilities [9]. However, these sensors are prone to failures (e.g., battery failure, process failure, transceiver failure, etc.) [10]. Hence, it is necessary to provide failure detection and adaptation strategies to ensure that the failure of sensor nodes does not affect the overall task of the network. The redundant use of sensor nodes, reorganization of the sensor network, and overlapping sensing regions are some of the techniques used to increase the fault tolerance and reliability of the network [11].

Let us take as example an ubiquitous WSN which is used to collect environmental data from within a vineyard and is divided into management zones in accordance with different characteristics (e.g., soil properties).

Each zone comprises sensors of different types (e.g., humidity control, temperature control, etc.) and the density of the sensors depends on the characteristics of each zone. That is, the number of sensors can be different for each type of sensor within a given zone. Furthermore, the redundancy of the sensors ensures both area coverage and connectivity in case of failure. Each management zone can thus be viewed as a single set which has sensors of the same type grouped into subsets. This grouping approach allows a threshold to be defined as being equal to the minimum number of sensors that each subset must have to keep the connectivity and application functioning all the time. Moreover, in some situations, there might be a need to dynamically reconfigure the density of the zones. In this case, the *threshold* value would change.

**Scenario 2:** In large-scale WSN environments, grouping sensor nodes into clusters has been widely adopted aiming the overall system scalability and reduction of resources consumption like battery power and bandwidth. Each  $cluster_i$  is composed of a node, denoted cluster

head (CH), which performs special tasks (e.g., routing, fusion, aggregation of messages, etc.), and several other sensor nodes (SN). The latter periodically transmit their data to the their corresponding CH node which aggregate and transmit them to the base station (BS) either directly or through the intermediate communication with other CH nodes. In this scenario, the concept of Impact FD can be applied considering each  $cluster_i$  as a subset of the system  $S$  whose size is initially  $n_i$ . When defining the impact factor for the processes of  $cluster_i$ , two issues should be considered: 1) the failure of CH which implies that the cluster is inaccessible compromising, therefore, the network connectivity and leading to untrusted states of  $S$ ; 2) When the number of alive SNs drops below a threshold, additional resources must be deployed to replenish the system to maintain its population density. Taking these constraints into account, we could have: impact factor = 1 to SNs, impact factor =  $n_i$  to the CH of  $cluster_i$ , and threshold for this cluster equals to  $threshold_i = n_i + (n_i - f_i)$ , where  $f_i$  is the maximum number of SN's failures of  $cluster_i$ . Thus, when either the CH fails or more than  $f_i$  SNs fail, the trust level will be below the threshold and the BS must be warned to take some decision.

**Scenario 3:** A third example might be a system consisting of a main server that offers a certain quality of service  $X$  (bandwidth, response time, etc.). If it fails,  $N$  backup servers can replace it, since each backup offers the same service but with a  $X/N$  quality of service. In this scenario, both the impact factor of the main server and the *threshold* would have the value of  $N * I_{back}$  where  $I_{back}$  is the impact value of each backup server, i.e., the system becomes unreliable whenever both the primary server and one or more of the  $N$  servers fail (or are suspected of being faulty).

The Impact FD can be applied to all the above scenarios which have the following features: a) the grouping of nodes that have some common characteristics into subgroups (subsets); b) the possibility of having nodes with different levels of relevance and c) the flexibility of some systems in being able to tolerate a margin of failure.

## 3. UNRELIABLE FAILURE DETECTORS

Proposed by Chandra and Toueg in [3], an unreliable FD can be seen as an oracle that gives (not always correct) information about process failures (either trusted or suspected). It usually provides a list of processes suspected of having crashed.

According to [12], unreliable FDs are so named because they can make mistakes (1) by erroneously suspecting a correct process<sup>4</sup> (false suspicion), or (2) by not suspecting a process that has actually crashed. If the FD detects its mistake later, it corrects it. For instance, a FD can stop suspecting at time  $t + 1$ , a process that it suspected at time  $t$ . Although an unreliable FD can not accurately

<sup>4</sup>A process is denoted *correct* if it does not crash during the whole execution.

determine the real state of processes, its use increases knowledge about them and encapsulates the uncertainty of the communication delay between two processes [3].

Unreliable failure detectors are usually characterized by two properties: *completeness* and *accuracy*, as defined in [3]. *Completeness* characterizes the failure detector's capability of suspecting faulty processes, while *accuracy* characterizes the failure detector's capability of not suspecting correct processes, i.e., restricts the mistakes that the failure detector can make. FDs are then classified according to two completeness properties and four accuracy properties [3]. The combination of these properties yields eight classes of failure detectors. This approach allows the design of fault tolerant applications and proof of their correctness based only on these properties, without having to address, for example, low-level network parameters.

In this work, we are particularly interested in the following completeness and accuracy properties:

- *Strong completeness*: Eventually every process that crashes is permanently suspected by every correct process.
- *Weak completeness*: Eventually every process that crashes is permanently suspected by some correct process.
- *Eventual strong accuracy*: There is a time after which correct processes are not suspected by any correct process.
- *Eventual weak accuracy*: There is a time after which some correct process is never suspected by any correct process.

The class of the *eventually perfect*  $\diamond P$  (resp., *eventually strong*  $\diamond S$ ) failure detectors satisfies the strong completeness and the eventual strong (resp., eventual weak) accuracy properties; the class of eventually weak failure detectors ( $\diamond W$ ) satisfies the weak completeness and the eventual weak accuracy properties.  $\diamond W$  is the weakest class allowing to solve consensus in an asynchronous distributed system with the additional assumption that a majority of processes are correct.

Note that the type of accuracy depends on the synchrony or stability of the network. For instance, an algorithm that provides eventual accuracy (strong or weak) may rely on partially synchronous systems which eventually ensure a bound for message transmission delays and processes speed.

From Chandra and Toueg's work, numerous other failure detector implementations and classes have been proposed in the literature. They usually differ in the system assumptions such as synchronous model, type of node (identifiable, anonymous [13], homonymous [14]), type of link [6] [15], [16] (lossy asynchronous, reliable, timely, eventually timely, etc.), behavior properties [17], [6]; type of network (static [4] [15], dynamic [18], [19]), etc. They can also have different implementation choices (timer-based [8],[20], message pattern [17]) and performance or quality of service (QoS) requirements [8].

The type of problem can also define the properties of the FD (mutual exclusion [21], k-set agreement [22], register implementation [23], etc.).

### 3.1. Implementation of Failure Detectors

The literature has several proposals for implementing unreliable failure detectors which usually exploit either a *timer-based* or a *message-pattern* approach.

In the *timer-based* strategy, FD implementations make use of timers to detect failures in processes. There exist two mechanisms that can be used to implement the timer-based strategy: *heartbeat* and *pinging*. In the *heartbeat* mechanism every process  $q$  periodically sends a control message ("*I am alive*" message) to process  $p$  that is responsible for monitoring  $q$ . If  $p$  does not receive such a message from  $q$  after the expiration of a timer, it adds  $q$  to its list of suspected processes. If  $p$  later receives an "*I am alive*" message from  $q$ ,  $p$  then removes  $q$  from its list of suspected processes.

An alternative approach uses the *pinging* mechanism which sends a query message "*Are you alive?*" from each process  $p$  to another process  $q$  periodically. Upon reception of such messages, the monitored process replies with an "*I am alive*" message. If process  $p$  times out on process  $q$ , it adds  $q$  to its list of suspected processes. If  $p$  later receives an "*I am alive*" message from  $q$ ,  $p$  then removes  $q$  from its list of suspected processes. The *heartbeat* strategy have advantages over *pinging* since the former sends half of the messages *pinging* detectors send for providing the same detection quality. Furthermore, a heartbeat detector estimates only the transmission delay of "*I am alive*" messages, whereas the *pinging* detector must estimate the transmission delay of "*Are you alive?*" messages, the reaction delay, and the transmission delay of "*I am alive*" messages.

The *message-pattern* strategy does not use any timeout mechanism. In [17], the authors propose an implementation that uses a request-response mechanism. A process  $p$  sends a *QUERY* message to  $n$  nodes that it monitors and then waits for responses (*RESPONSE* message) from  $\alpha$  processes ( $\alpha \leq n$ , traditionally  $\alpha = n - f$ , where  $f$  is the maximum number of failures). A query issued by  $p$  ends when it has received  $\alpha$  responses. The other responses, if any, are discarded and the respective processes are suspected of having failed. A process sends *QUERY* messages repeatedly if it has not failed. If, on the next request-response,  $p$  receives a response from a suspected process  $q$ , then  $p$  removes  $q$  from its list of suspects. This approach considers the relative order for the receiving of messages which always (or after a time) allow some nodes to communicate faster than the others.

## 4. SYSTEM MODELS

We consider a distributed system which consists of a finite set of processes  $\Pi = \{q_1, \dots, q_n\}$  with  $|\Pi| = n$ , ( $n \geq 2$ ) and that there is one process per node, site, or sensor.

Therefore, the word *process* can mean a node, a sensor, or a site. Each process is uniquely identified ( $id \mid 1 \leq id \leq n$ ) and identifiers are totally and consecutively ordered.

Processes can fail by crashing and they do not recover. A process is considered correct if it does not fail during the whole execution. We consider the existence of some global time denoted  $T$ . A failure pattern is a function  $F : T \rightarrow 2^\Pi$ , where  $F(t)$  is the set of processes that have failed before or at time  $t$ . The function  $correct(F)$  denotes the set of correct processes, i.e., those that have never belonged to a failure pattern ( $F$ ), while function  $faulty(F)$  denotes the set of faulty processes, i.e., the complement of  $correct(F)$  with respect to  $\Pi$ .

A process  $p \in \Pi$  monitors a set  $S$  of processes of  $\Pi$ .

We note  $correct(F_S) = correct(F) \cap S$  and  $faulty(F_S) = faulty(F) \cap S$ .

Every process in  $S$  is connected to  $p$  by a communication link and sends messages to it through this link. Notice that other links among processes of  $S$  can exist.

**Process synchrony:** We consider that each process has a local clock that can accurately measure intervals of time, but the clocks of the processes are not synchronized. Processes are synchronous, i.e., there is an upper bound on the time required to execute an instruction. For simplicity, and without loss of generality, we assume that local processing time is negligible with respect to message communication delays.

**Links and type of systems:** For the current implementation, we consider that links are directed (either unidirectional or bidirectional) and there exists a link from  $q$  ( $\forall q \in S$ ) to  $p$ .

Every link between  $p$  and  $q$  satisfies the following *integrity property*:  $p$  receives a message  $m$  from  $q$  at most once, only if  $q$  previously sent  $m$  to  $p$ . In other words, communication links cannot create or alter messages. Links are not assumed to be FIFO. Concerning loss property and link synchrony, we consider the following types of links as defined in [6]:

- *lossy asynchronous*: A link that satisfies the *integrity* property and there exists no bound on message delay. Note that, in this case, a message  $m$  sent over the link can be lost. However, if  $m$  is not lost, it is eventually received at its destination.
- *(Typed)fair lossy*: Assuming that each message has a type, link is *fair lossy* if, for every type infinitely many messages are sent, then infinitely many messages of each type are received (if the receiver process is correct).
- $\diamond$ -*timely*: A link that satisfies the *integrity* property and the following  $\diamond$ -*timeliness* property: there exists  $\delta$  and a time  $t$  such that if  $q$  sends a message  $m$  to  $p$  at time  $t' \geq t$  and  $p$  is correct, then  $p$  receives  $m$  from  $q$  by time  $t' + \delta$ . The maximum message delay  $\delta$  and the time  $t$  are not known. Note that messages sent before time  $t$  can be lost.

We then define the following types of system:

- *AS*: denotes a *lossy asynchronous* system with lossy asynchronous links;
- *F-AS*: denotes a *fair lossy asynchronous* system with fair lossy links;
- *W-ET*: denotes a *weak eventually timely* system: a system where some links are  $\diamond$ -*timely* while the others are lossy asynchronous;
- *S-ET*: denotes a *strong eventually timely* system: a system where all links are  $\diamond$ -*timely*;
- *S-ET- $\Pi$* : A system which is a *S-ET* system such that  $p$  in  $S$ ,  $S = \Pi$ , every pair of processes in  $S$  is connected either by a pair of directed links (with opposite directions) or bidirectional links, and all processes of  $\Pi$  execute the Impact FD algorithms.
- *W-ET- $\Pi$* : A system which is a *W-ET* system such that  $p$  in  $S$ ,  $S = \Pi$ , every pair of processes in  $S$  is connected either by a pair of directed links (with opposite directions) or bidirectional links, and all processes of  $\Pi$  execute the Impact FD algorithms. Moreover, there exists a correct process  $q_1$  in  $\Pi$ , such that, for all process  $q_2$  in  $\Pi$ ,  $q_1 \neq q_2$ ,  $q_1$  is connected to  $q_2$  by a  $\diamond$ -*timely* link (similarly to the definition of  $\diamond$ -*source* of [16]).

Note that a *S-ET* is also a *W-ET* and *S-ET- $\Pi$*  (resp., *W-ET- $\Pi$* ) is also a *S-ET* (resp., *W-ET*). Our Impact FD implementation can be applied to all of these systems.

Figure 1 shows three types of system. The first one (a) is an *AS* system where all links are *lossy asynchronous* while system (b) shows a *W-ET* where some links are  $\diamond$ -*timely* and others are *lossy asynchronous*. Finally, the last one (c) is a *W-ET- $\Pi$*  where site  $q_1$  is a  $\diamond$ -*source*.

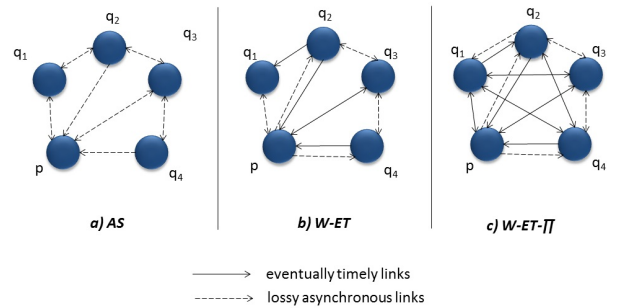


FIGURE 1. Examples of system types.

## 5. IMPACT FAILURE DETECTOR

The Impact FD can be defined as an unreliable failure detector that provides an output related to the trust level with regard to a set of processes. If the trust level provided by the detector, is equal to, or greater than, a given threshold value, defined by the user, the confidence in the set of processes is ensured. We can thus say that the system is trusted. We denote  $FD(I_p^S)$  the Impact failure detector module of process  $p$  and  $S$  is a set of processes of  $\Pi$ . When invoked in  $p$ , the Impact FD ( $I_p^S$ ) returns the

$trust\_level_p^S$  value which expresses the confidence that  $p$  has in set  $S$ .

### 5.1. Impact Factor and Subsets

Each process  $q \in S$  has an *impact factor* ( $I_q | I_q > 0 : I_q \in \mathbb{R}$ ). Furthermore, set  $S$  can be partitioned into  $m$  disjoint subsets ( $S = \{S_1, S_2, \dots, S_m\}$ ). Notice that the grouping feature of the Impact FD allows the processes of  $S$  to be partitioned into disjoint subsets, in accordance with a particular criterion. For instance, in a scenario where there are different types of sensors, those of the same type can be gathered in the same subset. Let then  $S^* = \{S_1^*, S_2^*, \dots, S_m^*\}$  be the set  $S$  partitioned into  $m$  disjoint subsets where each  $S_i^*$  is a set which each element is a tuple of the form  $\langle id, I \rangle$ , where  $id$  is a process identifier and  $I$  is the value of the impact factor of the process in question.

$S^* = \{S_1^*, S_2^*, \dots, S_m^*\}$  is a set such that  $\forall i, j, i \neq j, S_i^* \cap S_j^* = \emptyset$  and  $\bigcup \{q | \langle q, - \rangle \in S_i^*; 1 \leq i \leq m\} = S$ .

### 5.2. Trust Level

We denote  $trusted_p^S(t)$  the set of processes of  $S$  that are not considered faulty by  $p$  at  $t \in T$ . The *trust level* at  $t \in T$  of process  $p \notin F(t)$  in relation to  $S$  is denoted  $trust\_level_p^{S^*}$ . We have then  $trust\_level_p^{S^*}(t) = Trust\_level(trusted_p^S(t), S^*)$ , where the function  $Trust\_level(trusted_p^S(t), S^*)$  returns, for each subset  $S_i^*$ , the sum of the impact factors of the elements  $\langle id_q, I_q \rangle$  of  $S_i^*$  such that  $id_q \in trusted$ .

$$Trust\_level(trusted, S^*) = \{trust\_level_i | trust\_level_i = \sum_{j \in (trusted \cap S_i)} I_j, 1 \leq i \leq |S^*|\}$$

In other words, the  $trust\_level_p^{S^*}$  is a set that contains the trust level of each subset of  $S^*$  expressing the confidence that  $p$  has in the processes of  $S$ . Note that if all processes of  $S_i^*$  have failed  $trust\_level_i = 0$ .

### 5.3. Margin of Failures

An acceptable margin of failures, denoted  $threshold^{S^*}$ , characterizes the acceptable degree of failure flexibility in relation to set  $S^*$ . The  $threshold^{S^*}$  is adjusted to the minimum trust level required for each subset, i.e., it is defined as a set which contains the respective threshold of each subset of  $S^*$ :  $threshold^{S^*} = \{threshold_1, \dots, threshold_m\}$ .

The  $threshold^{S^*}$  is used by  $p$  to check the confidence in the processes of  $S$ . If, for each subset of  $S^*$ , the  $trust\_level_i(t) \geq threshold_i$ ,  $S$  is considered to be *trusted* at  $t$  by  $p$ , i.e., the confidence of  $p$  in  $S$  has not been jeopardized; otherwise  $S$  is considered *untrusted* by  $p$  at  $t$ .

Three points should be highlighted: (1) both the *impact factor* and  $threshold^{S^*}$  render the estimation of the confidence in  $S$  flexible. For instance, it is possible that

TABLE 1. Examples of sets and threshold.

	$S^*$	$threshold^{S^*}$
a	$\{\langle q_1, 1 \rangle, \langle q_2, 1 \rangle, \langle q_3, 1 \rangle\}$	{2}
b	$\{\langle q_1, 1 \rangle, \langle q_2, 1 \rangle, \langle q_3, 1 \rangle\}$	{1, 1, 1}
c	$\{\langle q_1, 1 \rangle, \langle q_2, 1 \rangle, \langle q_3, 1 \rangle, \langle q_4, 2 \rangle, \langle q_5, 2 \rangle, \langle q_6, 2 \rangle\}$	{2, 4}
d	$\{\langle q_1, 1 \rangle, \langle q_2, 1 \rangle, \langle q_3, 1 \rangle, \langle q_4, 5 \rangle, \langle q_5, 5 \rangle\}$	{7}

TABLE 2. Example of FD ( $I_p^S$ ) output:  $S^*$  has three subsets.

t	F(t)	$trusted_p^S(t)$	$trust\_level_p^{S^*}(t)$	Status at t
1	$\{q_2\}$	$\{q_1, q_3, q_4, q_5, q_6, q_7, q_8, q_9\}$	{2, 6, 9}	Trusted
2	$\{q_1, q_2, q_5\}$	$\{q_3, q_4, q_6, q_7, q_8, q_9\}$	{1, 4, 9}	Trusted
3	$\{q_1, q_2, q_5, q_6\}$	$\{q_3, q_4, q_7, q_8, q_9\}$	{1, 2, 9}	Untrusted

$$S^* = \{\langle q_1, 1 \rangle, \langle q_2, 1 \rangle, \langle q_3, 1 \rangle, \langle q_4, 2 \rangle, \langle q_5, 2 \rangle, \langle q_6, 2 \rangle, \langle q_7, 3 \rangle, \langle q_8, 3 \rangle, \langle q_9, 3 \rangle\}$$

$$threshold^{S^*} = \{1, 4, 6\}$$

some processes in  $S$  might be faulty or suspected of being faulty but  $S$  is still trusted; (2) the Impact FD can be easily configured to adapt to the needs of the environment; (3) the  $threshold^{S^*}$  can be tuned to provide a more restricted or softer monitoring. Note that the Impact FD can also be applied when the application needs individual information about each process of  $S$ . In this case, each process must be defined as a different subset of  $S^*$ .

### 5.4. Examples

Table 1 shows several examples of sets and their respective thresholds. In the first example (a) there is just one subset with three processes. Each process has impact factor equal to 1 and the  $threshold$  defines that the sum of impact factor of non faulty processes must be at least equals to 2, i.e., the system is considered trusted whenever there are two or more correct processes. Example (b) shows a configuration where processes must be monitored individually. Each process is the only element of a subset and the threshold defines that if any of the processes fails, the system is not trusted anymore. In the third example (c),  $S$  has two sets with three processes each. The  $threshold$  requires at least two correct processes in each subset. The last example (d) has a single subset with five processes with different impact factors. The  $threshold$  defines that the set is trusted whenever the sum of impact factor of correct processes is at least equal to seven.

In Table 2, we consider a set  $S^*$  composed by three subsets:  $S_1^*$ ,  $S_2^*$ , and  $S_3^*$  ( $S^* = \{\langle q_1, 1 \rangle, \langle q_2, 1 \rangle, \langle q_3, 1 \rangle, \langle q_4, 2 \rangle, \langle q_5, 2 \rangle, \langle q_6, 2 \rangle, \langle q_7, 3 \rangle, \langle q_8, 3 \rangle, \langle q_9, 3 \rangle\}$ ). The values of  $threshold^{S^*} = \{1, 4, 6\}$  define that the subset  $S_1^*$  (resp.,  $S_2^*$  and  $S_3^*$ ) must have at least one (resp., two) correct process. The table shows several possible outputs for FD ( $I_p^S$ ) depending of process failures: the set  $S^*$  is considered trusted at  $t$  if, for each subset  $S_i^*$ ,  $trust\_level_i(t) \geq threshold_i$ .

### 5.5. Flexibility of the Impact FD

The *flexibility* of the Impact FD characterizes its capability of accepting different set of responses that lead to a trusted state of  $S$ . We define  $PS$  as the set that contains all possible subsets of processes which satisfy a defined *threshold*:

$$PS = \times \text{PowerSet}(S_i^*, \text{threshold}_i^{S^*})$$

where  $\times S_i$  corresponds to the cartesian product of several sets.

Initially, the *PowerSet* function generates the power set<sup>5</sup> for each subset ( $S_i^*$ ) of  $S^*$ . Then, only the subsets of  $S_i^*$  whose sum of their parts is greater than, or equal to,  $\text{threshold}_i$  are selected. That is, the output is the sets of possible trusted set that satisfy the threshold for each subset  $S_i^*$ . Following this, the cartesian product is applied to generate all possible combinations, i.e., all the generated subsets of processes satisfy the  $\text{threshold}^{S^*}$ .

Let's consider the following example:

$$\begin{aligned} S^* &= \{\{\langle q_1, 1 \rangle, \langle q_2, 1 \rangle\}, \{\langle q_3, 1 \rangle, \langle q_4, 1 \rangle\}, \{\langle q_5, 1 \rangle, \langle q_6, 1 \rangle\}\} \\ \text{threshold}^{S^*} &= \{1, 1, 1\} \\ PS &= \text{PowerSet}(S^*, \text{threshold}^{S^*}) \end{aligned}$$

$$\begin{aligned} \text{PowerSet}(S_1^*, \text{threshold}_1) &= \{\{q_1\}, \{q_2\}, \{q_1, q_2\}\} \\ \text{PowerSet}(S_2^*, \text{threshold}_2) &= \{\{q_3\}, \{q_4\}, \{q_3, q_4\}\} \\ \text{PowerSet}(S_3^*, \text{threshold}_3) &= \{\{q_5\}, \{q_6\}, \{q_5, q_6\}\} \\ PS &= \text{PowerSet}(S_1^*, \text{threshold}_1) \times \text{PowerSet}(S_2^*, \text{threshold}_2) \\ &\times \text{PowerSet}(S_3^*, \text{threshold}_3) \end{aligned}$$

$$\begin{aligned} PS &= \{\{q_1, q_3, q_5\}, \{q_1, q_3, q_6\}, \{q_1, q_3, q_5, q_6\}, \\ &\{q_1, q_4, q_5\}, \{q_1, q_4, q_6\}, \{q_1, q_4, q_5, q_6\}, \\ &\{q_1, q_3, q_4, q_5\}, \{q_1, q_3, q_4, q_6\}, \{q_1, q_3, q_4, q_5, q_6\}, \dots\} \end{aligned}$$

For instance, if  $\text{trusted}_p^S(t_1) = \{q_1, q_3, q_5\}$  and  $\text{trusted}_p^S(t_2) = \{q_1, q_3, q_4, q_6\}$ ,  $\text{trusted}_p^S(t_1)$  and  $\text{trusted}_p^S(t_2) \in PS$ , and, therefore,  $p$  considers that the system  $S$  is trusted at both  $t_1$  and  $t_2$ .

We now define two properties,  $PR(IT)_p^S$  and  $PR(\diamond IT)_p^S$ , that characterize the stability condition that ensures the confidence (or eventual confidence) of  $p$  on  $S$ .

*Impact Threshold Property* -  $PR(IT)_p^S$ : For a failure detector of a correct process  $p$ , the set  $\text{trusted}_p^S$  is always a subset of  $PS$ .

$$PR(IT)_p^S \equiv p \in \text{correct}(F), \forall t \geq 0, \text{trusted}_p^S(t) \in PS$$

*Eventual Impact Threshold Property* -  $PR(\diamond IT)_p^S$ : For a failure detector of a correct process  $p$ , there is a time after which the set  $\text{trusted}_p^S$  is always a subset of  $PS$ .

$$PR(\diamond IT)_p^S \equiv \exists t \in T, p \in \text{correct}(F), \forall t' \geq t, \text{trusted}_p^S(t') \in PS$$

If  $PR(IT)_p^S$  (resp.,  $PR(\diamond IT)_p^S$ ) holds, the system  $S$  is always (resp., eventually always) trusted by  $p$ .

<sup>5</sup>the power set of any set  $S$  is the set of all subsets of  $S$ , including the empty set and  $S$  itself

### 5.6. Classes of Impact FD

Similarly to the *completeness* and *accuracy* properties defined in [3] (see Section 3), we define the following properties for the Impact FD:

*Impact completeness* $_p^S$ : For a failure detector of a correct process  $p$ , there is a time after which  $p$  does not trust any crashed process of  $S$ ;

$$\exists t \in T, p \in \text{correct}(F), \forall q \in \text{faulty}(F_S) : \forall t' \in T \geq t, q \notin \text{trusted}_p^S(t')$$

*Impact weak completeness* $_p^S$ : For a failure detector of a correct process  $p$ , there is a time after which some  $p$  does not trust any crashed process of  $S$ ;

$$\exists t \in T, \exists p \in \text{correct}(F), \forall q \in \text{faulty}(F_S) : \forall t' \in T \geq t, q \notin \text{trusted}_p^S(t')$$

*Eventual impact strong accuracy* $_p^S$ : For a failure detector of a correct process  $p$ , there is a time after which all correct processes of  $S$  belong to  $\text{trusted}_p^S$ ;

$$\exists t \in T, \forall t' \in T \geq t, p \in \text{correct}(F), \forall q \in \text{correct}(F_S) : q \in \text{trusted}_p^S(t')$$

*Eventual impact weak accuracy* $_p^S$ : For a failure detector of a correct process  $p$ , there is a time after which some correct process of  $S$  is trusted by every correct process.

$$\exists t \in T, \forall t' \in T \geq t, \forall p \in \text{correct}(F), \exists q \in \text{correct}(F_S) : q \in \text{trusted}_p^S(t')$$

Lets consider that  $p$  in  $S$  and  $S = \Pi$

We can then define some classes of Impact FD, similarly to those defined in [3] and [23]:

- $\diamond IP$  (*Eventually Perfect Impact Class*): For  $S = \Pi$ ,  $\forall p \in \text{correct}(F)$ ,  $\text{impact completeness}_p^S$  and  $\text{eventual impact strong accuracy}_p^S$  properties are satisfied;
- $\diamond IS$  (*Eventually Strong Impact Class*): For  $S = \Pi$ ,  $\forall p \in \text{correct}(F)$ ,  $\text{impact completeness}_p^S$  and  $\text{eventual impact weak accuracy}_p^S$  properties are satisfied;

We point out that the trust level output of the failure detectors of the above classes depends on  $S^*$ , i.e., the impact factor assigned to the processes as well as how they are grouped in subsets.

## 6. IMPLEMENTATION OF IMPACT FD

The Impact FD can have different implementations according to the characteristics of the system: the synchronization model, whether or not the process  $p$  has knowledge about the composition of  $S$  (membership) and the type of nodes. In this section, we present a *timer-based* implementation of the Impact FD (Algorithms 2 and 3).



The system  $S$  consists of  $n$  processes grouped in  $m$  subsets. The monitor process  $p \notin S$ .

Our implementation (Algorithms 2 and 3) uses timers to detect failures of processes in different system models. Process  $q$  periodically sends (*heartbeat*) messages to process  $p$ , that is responsible for monitoring process  $q$ . If  $p$  does not receive such a message from  $q$  after the expiration of the timer, it removes  $q$  from its list of trusted processes.

**Chen's heartbeat estimation arrival:** Algorithm 2 uses the algorithm proposed by [8], denoted Chen's algorithm in this work, which computes the timeout value for waiting for a heartbeat message from each monitored process.

Chen's algorithm uses arrival times sampled in the recent past to compute an estimation of the arrival time of the next heartbeat. Then, timeout value is set according to this estimation and a safety margin ( $\beta$ ). It is recomputed at each timer expiration.

The estimation algorithm is the following: process  $p$  takes into account the  $z$  most recent heartbeat messages received from  $q$ , denoted by  $y_1, y_2, \dots, y_z$ ;  $A_1, A_2, \dots, A_z$  are their actual reception times according to  $p$ 's local clock. When at least  $z$  messages have been received, the theoretical arrival time  $EA_{(k+1)}$  for a heartbeat from  $q$  is estimated by:

$$EA_{(k+1)} = \frac{1}{z} \sum_{i=k-z}^k (A_i - \Delta_i * i) + (k+1)\Delta_i$$

where  $\Delta_i$  is the interval between the sending of two  $q$ 's heartbeats. The next timeout value which will be set in  $p$ 's timer and will expire at the next freshness point  $\tau_{(k+1)}$ , is then composed by  $EA_{(k+1)}$  and the constant safety margin  $\beta$ :

$$\tau_{(k+1)} = \beta + EA_{(k+1)} \text{ (next freshness point)}$$

In Algorithm 2, Chen's algorithm is executed by the *Timeout* function (Algorithm 1) which calculates the arrival estimation of the next heartbeat for process  $q$ . Furthermore, if the system is eventually timely in order to ensure accuracy of the impact FD a  $\eta$  value is added to the  $q$ 's timeout. The  $\eta$  has an initial zero value and is incremented whenever  $p$  falsely suspects  $q$  (line 8 of Algorithm 2). Such an increment ensures that, if the link is  $\diamond$ -timely and stable, i.e., the delay bound  $\delta$  verifies forever, the heartbeat arrival estimation time will be always equal or greater than the actual arrival time for every heartbeat and, therefore, there will be no more estimation mistakes and, therefore no more false suspicions and the accuracy property is hold.

Algorithm 2 is executed by the monitor process  $p$  while Algorithm 3 by all processes of  $S$ .

The following local variables are used by the algorithm:

- *trusted*: set of processes considered not faulty by  $p$ ;
- $\eta[]$ : keeps the timeout increment of each process in  $S$ ;

---

### Algorithm 1 Timeout Function.

---

```

1: function TIMEOUT( $q, \eta, model$ )
2:   if  $model = * - AS$  then           ▷ AS or F-AS system
3:      $\tau_q = \beta + EA_q$ 
4:   else
5:      $\tau_q = \beta + EA_q + \eta$ 
6:   end if
7:   return  $\tau_q$ 
8: end function

```

---

- *timer[]*: is set to the timeout value at each timer expiration.

---

### Algorithm 2 Timer-based Impact FD Algorithm for $p$ .

---

```

1: Begin
   Input
2:    $S^*, model, \eta$ 
   Init
3:    $trusted = S$ 
4:    $\forall q \neq p : reset\ timer[q] =$ 
      $Timeout(q, 0, model); \eta[q] = 0$ 

   Task T1 - Upon reception of ALIVE from  $q$ 
5:   if  $q \notin trusted$  then
6:      $trusted = trusted \cup \{q\}$ 
7:     if  $model = * - ET$  then ▷ W-ET or S-ET system
8:        $\eta[q] = \eta[q] + \eta$ 
9:     end if
10:  end if
11:   $reset\ timer[q] = Timeout(q, \eta[q], model)$ 

   Task T2 - When timer[q] expires
12:   $trusted = trusted \setminus \{q\}$ 
13:   $reset\ timer[q] = Timeout(q, \eta[q], model)$ 

   Task T3
14:  Upon invocation of Impact() do
15:    return  $Trust\_level(trusted, S^*)$ 
16:  end
17: End

```

---

In Algorithm 2,  $p$  receives as input the set  $S^*$ , the increment time  $\eta$  for the timeout estimation (used when occurs false suspicions in *W-ET* or *S-ET* systems), and the *model* of the system (*AS*, *F-AS*, *W-ET* or *S-ET*). Note that by receiving  $S^*$ , the algorithm knows  $S$ , the impact factor of all processes of  $S$ , the number of subgroups  $m$ , and how processes are grouped.

At the initialization, *trusted* is equal to the set of processes. Then, for each process  $q$  in  $S$  ( $q \neq p$ ),  $p$  initializes the timer that will control the arrival of heartbeat messages from  $q$  (line 4).

Upon the reception of an ALIVE message from  $q$  (Task T1),  $q$  is added to the *trusted* set (line 6) and the timeout related to  $q$  is recomputed (line 11).

In task T2,  $q$  is considered faulty by  $p$  and, therefore,

---

**Algorithm 3** Timer-based Impact FD Algorithm for  $q$  in  $S$ .
 

---

```

1: Begin
   Input
2:    $p, \Delta$ 
   Task T1 - Repeat forever every  $\Delta$  time unit
3:    $send(ALIVE)$  to  $p$ 

4: End
    
```

---

removed from *trusted* (line 12). The timeout related to  $q$  is then recomputed (line 13).

Task T3 handles the invocation of the *Impact()* function, which computes the *trust\_level* of each subset and returns the trust level related to the current trusted processes which are trusted by  $p$ .

In Algorithm 3, every monitored process  $q$  of  $S$  sends periodically, every  $\Delta$  units of time, an *ALIVE* message to its input observer  $p$  in order to inform the latter that it is alive (Task T1).

Note that if  $p \in S$ , like in *S-ET- $\Pi$*  or *W-ET- $\Pi$* , all processes of  $\Pi$  execute the two algorithms behaving, thus, as both a monitor and a monitored process. In this case, the primitive *send* in line 3 of Algorithm 3 is replaced by the primitive *broadcast*, i.e., every process periodically sends a heartbeat to all processes of  $S$ .

### 6.1. Proof

In this section, we prove the correctness of some properties of Algorithm 2 and 3.

**LEMMA 6.1.** *If  $p$  is correct, Algorithms 2 and 3 satisfy the impact completeness property for  $p$  in relation to  $S$ .*

*Proof.* Let's consider that at  $t$ ,  $S_f = faulty(F_S)$  (i.e., all failures of processes in  $S$  already took place) and that all the *ALIVE* messages (heartbeats) sent by these faulty processes before they crashed were delivered to  $p$ . Thus, after  $t$ ,  $p$  will receive no more *ALIVE* messages from processes of  $S_f$ . Then,  $\forall q \in S_f$ , in the next expiration of the timer[ $q$ ] after  $t$ ,  $q$  will be removed from *trusted* (line 12). Moreover, since  $p$  will receive no more *ALIVE* messages from  $q$ , line 6 will never be executed for  $q$  anymore and, thus,  $q$  will nevermore be included in *trusted*. Therefore,  $\exists t' > t, \forall t'' \geq t', \forall q \in faulty(F_S): q \notin trusted_p(t'')$ .  $\square$

**LEMMA 6.2.** *If  $S$  is a W-ET, if  $p$  is correct, Algorithms 2 and 3 satisfy the eventual impact weak accuracy property for  $p$  in relation to  $S$ .*

*Proof.* In a *W-ET* system  $S$ , there exists  $q \in correct(F_S)$  linked to  $p$  by a  $\diamond$ -timely.

Let's denote  $T_q$  the stabilization time of the link  $q$  from  $p$ , i.e.,  $\forall t \geq T_q$ , if  $q$  sends a message  $m$  to  $p$ , then  $q$  receives  $m$  by time  $t + \delta$ . Then, when  $q$  sends a message to  $p$  at  $t \geq T_q$ , and  $p$  receives the message at  $t_1 > t$ , two cases may happen:

- the next timer of  $q$  expires after  $t_1$  (Task T1). In this case,  $q$  will be added to *trusted* (line 6). Then, the timeout value of  $q$  is incremented (line 8) and the timer of  $q$  restarted;
- the current timer of  $q$  expires before  $t_1$ :  $p$  removes  $q$  from *trusted* (line 12) and the timer is restarted.

Since  $q$  keeps on sending *ALIVE* messages to  $p$  and *timer[ $q$ ]* increases at false suspicion of  $q$ , there exists a time  $t_2 > T_q$  such that *timer[ $q$ ]*  $\geq \delta$  and then Task 2 will nevermore be executed by  $p$  for  $q$  and,  $\forall t_3 \geq t_2$ , upon every  $q$ 's message reception by  $p$ , task T1 will be executed for  $q$ . Therefore,  $q$  will remain forever in *trusted<sub>p</sub>* and *Eventual impact weak accuracy<sub>p</sub><sup>S</sup>* is satisfied.  $\square$

**LEMMA 6.3.** *If  $S$  is a S-ET, if  $p$  is correct, Algorithms 2 and 3 satisfy the eventual impact strong accuracy property for  $p$  in relation to  $S$ .*

*Proof.* In a *S-ET* system  $S$ , every  $q \in correct(F_S)$  is linked to  $p$  by a  $\diamond$ -timely. Then, following the same proof scheme of Lemma 6.2,  $q$  will remain forever in *trusted<sub>p</sub>* and *Eventual impact strong accuracy<sub>p</sub><sup>S</sup>* is satisfied.  $\square$

**THEOREM 6.1.** *In W-ET- $\Pi$  systems, Algorithms 2 and 3 implement a FD of class  $\diamond IS$ .*

*Proof.* If the system is *W-ET- $\Pi$* ,  $S = \Pi$ , from Lemma 6.1 and 6.2,  $\forall p \in correct(F)$ , *Impact completeness<sub>p</sub> <sup>$\Pi$</sup>*  and *Eventual impact weak accuracy<sub>p</sub> <sup>$\Pi$</sup>*  are satisfied. Therefore, the algorithms implement a FD of class  $\diamond IS$ .  $\square$

**THEOREM 6.2.** *In S-ET- $\Pi$  systems, Algorithms 2 and 3 implement a FD of class  $\diamond IP$ .*

*Proof.* If the system is *S-ET- $\Pi$* ,  $S = \Pi$ , from Lemma 6.1 and 6.3,  $\forall p \in correct(F)$ , *Impact completeness<sub>p</sub> <sup>$\Pi$</sup>*  and *Eventual impact strong accuracy<sub>p</sub> <sup>$\Pi$</sup>*  are satisfied. Therefore, the algorithms implement a FD of class  $\diamond IP$ .  $\square$

**THEOREM 6.3.** *If  $PR(IT)_p^S$  (resp.,  $PR(\diamond IT)_p^S$ ) holds, the system  $S$  is always (resp., eventually always) trusted by  $p$ .*

*Proof.* if  $PR(IT)_p^S$  (resp.,  $PR(\diamond IT)_p^S$ ) holds,  $\forall t \geq 0$  (resp.,  $\exists t_1, \forall t \geq t_1$ ), *trusted*  $\in PS$  and, therefore,  $S$  is trusted by  $p$ .  $\square$

## 7. PERFORMANCE EVALUATION

In this section, we first describe the environment in which the experiments were conducted and the QoS metrics used for evaluating the results. Then, we discuss some of the results in different systems and configurations of node sets with regard to both the impact factor and the threshold.

Our goal is to evaluate the QoS of the Impact FD: how fast it detects failures and how well it avoids false suspicions. With this purpose, we exploit a set of metrics

TABLE 3. Sites of Experiments.

ID	Site	Local
0	planetlab1.jhu.edu	USA East Coast
1	ple4.ipv6.lip6.fr	France
2	planetlab2.csuohio.edu	USA, Ohio
3	75-130-96-12.static.oxfr.ma.charter.com	USA, Massachusetts
4	planetlab1.cnis.nyit.edu	USA, New York
5	saturn.planetlab.carleton.ca	Canada, Ontario
6	PlanetLab-03.cs.princeton.edu	USA, New Jersey
7	prata.mimuw.edu.pl	Poland
8	planetlab3.upc.es	Spain
9	pl1.eng.monash.edu.au	Australia

that have been proposed by [8] and we compare the results of Impact FD with an approach that monitors processes individually using Chen’s FD [8]. We conducted a set of experiments, considering two different systems: 1) *AS*: a system where all links are lossy asynchronous; (b) *W-ET*: a system where some links are  $\diamond$ -*timely* and the others are lossy asynchronous.

### 7.1. Environment

Our experiments are based on real trace files, collected from ten nodes of PlanetLab [1], as summarized in Table 3. The PlanetLab experiment started on July 16, 2014 at 15:06 UTC, and ended exactly a week later. Each site sent heartbeat messages to other sites at a rate of one heartbeat every 100 ms (the sending interval). We should point out that these traces of PlanetLab contain a large amount of data concerning the sending and reception of heartbeats, including unstable periods of links and message loss which induce false suspicions. Thus, such traces characterize any distributed system that uses FDs based on heartbeat. Furthermore, since our experiments were conducted using the PlanetLab traces, all of them reproduce exactly the same scenarios of sending and receiving of heartbeats by the processes. Furthermore, provided that the same trace is available, the test conditions and results are reproducible.

For the evaluation of Impact FD, we defined  $S = \{1, 2, 3, 4, 5, 6, 7, 8, 9\}$  and site  $0$  as the monitor node ( $p \notin S$ ).

Table 4 gives some information about the heartbeat messages received by site  $0$  (the monitor node). We observe that the mean inter-arrival times of received heartbeats is very close to 100 ms. However, for some sites, the standard deviation is very high, like for site 5 which the standard deviation was 310.958 ms with a minimum inter-arrival time of 0.006 ms, and a maximum of 657,900.226 ms. Such deviation probably indicates that, for a certain time interval during execution, the site stopped sending heartbeats and started again afterwards. Note also that site 2 stopped sending messages after approximately 48 hours and, therefore, there are just 1,759,990 received messages.

The implementation of the Impact FD used in our evaluation experiments is based on Algorithms 2 and 3, presented in Section 6. For the estimation of the timeout value of Chen’s estimation algorithm, the authors suggest that the safety margin  $\beta$  should range from 0 to 2500

TABLE 4. Sites and heartbeat sampling.

Site	Messages	Min (ms)	Max (ms)	Mean (ms)	Stand. Dev.(ms)
1	5,424,326	0.025	26,494.168	100.058	19.525
2	1,759,989	0.031	509.093	100.415	9.275
3	5,426,843	0.027	1,227.349	100.012	1.709
4	5,414,122	0.003	1,193.276	100.247	18.595
5	5,413,542	0.006	657,900.226	100.258	310.958
6	5,426,700	0.003	3,787.643	100.015	2.557
7	5,424,117	0.006	59,603.188	100.062	31.229
8	5,424,560	0.027	11,443.359	100.054	100.714
9	5,422,043	0.004	30,600.076	100.100	18.798

ms. For all experiments, we set the window size to 100 samples, which means that the FD only relies on the last 100 heartbeat message samples for computing the estimation of the next heartbeat arrival time. Several works aim at improving the QoS of failure detectors which estimate the arrival time of the next heartbeat by varying some parameters such as window size [24] [25] [26]. The latter emphasize that Chen FD has better performance with smaller window sizes. Based on these studies and our experiments, we used the window size of 100 samples, which induces Chen FD to take less time to adapt to the dynamics of the network.

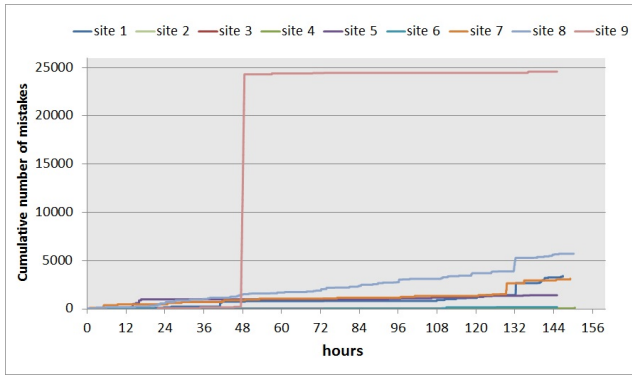
#### 7.1.1. Evaluation of sites’ stability

We evaluated the stability of sites, considering that the traces could correspond to either an *AS* system or *W-ET* system. For the first case, the value *AS* was assigned to the *model* parameter of Algorithm 2 while for the second case, the same parameter was set to *W-ET*. Each of the sites of  $S$  is considered individually and not as a whole system. The impact value of sites and the threshold values are not concerned for the experiments.

The  $\beta$  value of Chen’s algorithm was set to 400ms. We chose such a value because it is an acceptable safety margin for detection time and is not too aggressive; otherwise the failure detector would be prone to too many mistakes. The stability of sites and the corresponding links to the monitor were evaluated during the whole trace period for the *AS* system and during just the first 24 hours of the trace period for the *W-ET* system.

**AS system:** Figure 2 shows the cumulative number of mistakes, i.e., false suspicions, made by the monitor site  $0$  for each site of  $S$ . We can observe that site or link periods of instability entail late arrivals or loss of heartbeats and, therefore, mistakes by the monitor site. For example, site 9 had a large number of cumulative mistakes at hour 48. After that, there is a stable period with regard to this site. On the other hand, around this time, site 2 stopped sending messages since it crashed and, consequently, the monitor node made no more mistakes about it after this time. Finally, we can say that, considering the whole period, sites 3 and 6 (resp., 8 and 9) are, in average, the most stable (resp., unstable) sites.

**W-ET system:** In Algorithm 1 (Task T1), when the system is *W-ET*, Chen’s heartbeat arrival estimation value is incremented by  $\eta$ , whenever a false suspicion



**FIGURE 2.** AS System: Cumulative number of mistakes of each site.

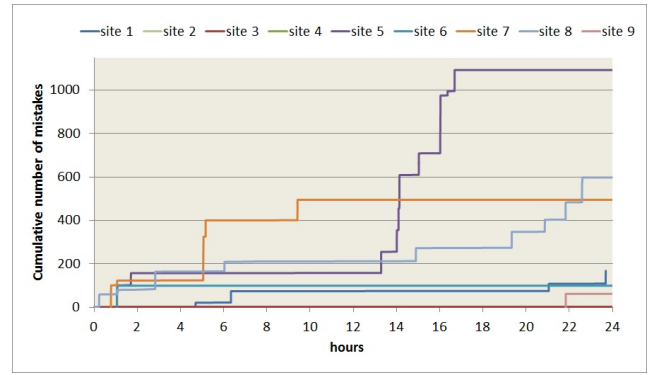
occurs. However, in order to prevent this estimation from increasing too fast when there is a period of high instability, which could increase the detection time considerably, we considered that the value of the timer (line 8) will be incremented by  $\eta$  at every  $\mu$  heartbeat arrivals, provided that during the period of these  $\mu$  heartbeat arrivals, one or more false suspicions took place. For the experiment, we considered  $\mu$  equals to 10 and  $\eta = 1ms$ .

Note that when the heartbeat arrival estimation reaches a value which is greater than the transmission delay limit for links with  $\diamond$ -timely behavior, the monitor site does not make anymore mistakes for the related sites. Moreover, for unstable sites, as the heartbeat arrival estimation value will also be incremented by  $\eta$  in case of false suspicions, such an increment will be responsible for decreasing the number of mistakes for these sites when compared to an AS system. However, such a reduction induces a higher false suspicion detection time.

Figure 3 shows the cumulative number of mistakes that the monitor process made for each site in the first 24 hours of the traces. We can observe that there are links which behave  $\diamond$ -timely while the others are *lossy asynchronous*. The failure detector did not make mistakes related to site 4. For sites 2 and 3, it did only 1 and 2 mistakes, respectively, while for site 6, it did 99 mistakes during the first hour, and then no more mistakes. Although some sites have had some periods of stability (1, 5, 8 and 9), site 0 made mistakes related to them until almost the end of these execution. On the other hand, it did no mistakes for site 7 after hour 9. In summary, we can consider that site 0, the monitor site, is connected by  $\diamond$ -timely links to sites 2, 3, 4 and 6, and by *lossy asynchronous* links to 1, 5, 7, 8, and 9.

### 7.1.2. Evaluation of heartbeat arrival times

The goal of this section is to show the behavior of the arrival times when the timer expires and the failure detector does not receive the heartbeat message. For the first 24 hours, we evaluated the behavior of the three arrival times at *site 0* related to heartbeat messages of



**FIGURE 3.** W-ET System: Cumulative number of mistakes of each site.

*site 1* with two different values to  $\beta$  (100 and 400 ms). We chose *site 1* because it has many periods of instability. We consider that *site 1* and *site 0* are alternately connected by *lossy asynchronous* or  $\diamond$ -timely links.

We evaluated three arrival times: 1) arrival of the heartbeat; 2) the estimated arrival time considering that the link is *lossy asynchronous*; 3) the estimated arrival time considering that the link is  $\diamond$ -timely. In order to compute the latter, we set  $\eta = 1ms$  and the number of heartbeats before incrementing the heartbeat arrival estimation value, in case of false suspicions, to 100 ( $\mu = 100$ ). Figures 4 and 5 show the time difference between the arrival time of the previous heartbeat and the above three arrival ones for *site 1*: 1) the difference in milliseconds between the arrival time of the last heartbeat and the previous one (*Arrival*); 2) the difference in milliseconds between the estimated arrival time ( $\tau_q = \beta + EA_q$ ) and the arrival time of the previous heartbeat, considering the link *lossy asynchronous* (*Estimation LA*); 3) the number of milliseconds elapsed between the estimated arrival time ( $\tau_q = \beta + EA_q + \eta$ ) and the arrival time of the previous heartbeat, considering the link  $\diamond$ -timely (*Estimation ET*).

Figures 4 and 5 show the behavior of times when the timeout expires for  $\beta = 100ms$  and  $\beta = 400ms$  respectively till hour 24. In order to simplify the figures, the points correspond only to the times where mistakes took place. Figure 5 has fewer points than Figure 4 because the number of mistakes drops considerably due to a higher  $\beta$  value.

Figure 4 summarizes the time differences for  $\beta = 100ms$ . The monitor *site 0* made 807 (resp., 592) mistakes when the link is *lossy asynchronous* (resp.  $\diamond$ -timely). Note that at several points, the estimated arrival time for the *ET* estimation is higher than the arrival time of the heartbeat while, in the *LA* estimation, the difference between them is very small (1 or 2 ms), specially from time 6 to 21. Thus, both lines in the figure overlap but the estimation arrival time is often below the arrival one which explains the high number of mistakes. At times 1, 4, 6, 21, and 23, which correspond to periods of instability, the arrival time of the

heartbeat is much higher than the estimation one for the *LA* estimation.

Contrarily to Figure 4, the number of mistakes drops to 168 and 166 mistakes, for *ET* and *LA* estimations respectively as shown in Figure 5. Therefore, since they are almost equal, the estimated arrival times for the *lossy asynchronous* and  $\diamond$ -*timely* are also quite close. Similarly to Figure 4, the mistakes are concentrated in periods of great instability (1, 4, 6, 21, and 23).

### 7.1.3. Discussion about the choice of parameters

Below we describe the criteria used to set the parameter values  $\beta$ ,  $\mu$  and  $\eta$ :

- $\beta$ : for the estimation of the timeout value of Chen’s estimation algorithm, the authors [8] suggest that the safety margin should range from 0 to 2500ms. The  $\beta$  value of Chen’s algorithm was set to 400ms in experiments of sections 7.1.1, 7.1.2, and 7.3.1. We chose such a value because it is an acceptable safety margin for detection time and is not too aggressive; otherwise the failure detector would be prone to too many mistakes. In experiments of section 7.4, we used  $\beta = 50$ ms and  $\beta = 100$ ms. These safety margin values are quite aggressive, which, consequently, lead the failure detector prone to make mistakes. We choose these values because our aim was to check the behavior of the failure detector in a scenario more vulnerable to failures.
- $\eta$ : this is increment time for the timeout estimation (used when false suspicions take place). We conducted experiments with two values:  $500\mu$ s and 1ms. We defined these values taking into account that each site sends heartbeat messages to other sites at a rate of one heartbeat every 100ms (the sending interval). A value greater than 1ms greatly increases the detection time. On the other hand, a value smaller than  $500\mu$ s generates many mistakes. Thus, these values guarantee a better tradeoff between detection time and accuracy of the Impact FD.
- $\mu$ : we conducted experiments with different values for  $\mu$  (1, 10, and 100). On the one hand, we observed that for  $\mu = 1$ , a smaller number of errors occurred, however, the detection time increased. On the other hand, when we used  $\mu = 100$ , the number of errors increased. Considering these two trade-offs, we set  $\text{lij} = 10$  in the experiment of section 7.1.1 (Evaluation of sites’ stability).

## 7.2. QoS Metrics

First, let’s remember that the goal of the Impact FD is to inform if a system is “trusted” or “untrusted”. This information can be deduced by comparing the output *trust\_level* of the Impact FD with the *threshold*. Thus, we say that the output of the Impact FD of  $p$  is **correct** if either, for each subset of  $S^*$  ( $1 \leq i \leq m$ ),  $\text{trust\_level}_i \geq \text{threshold}_i$  and  $S$  is actually trusted, or  $\exists i$  such that

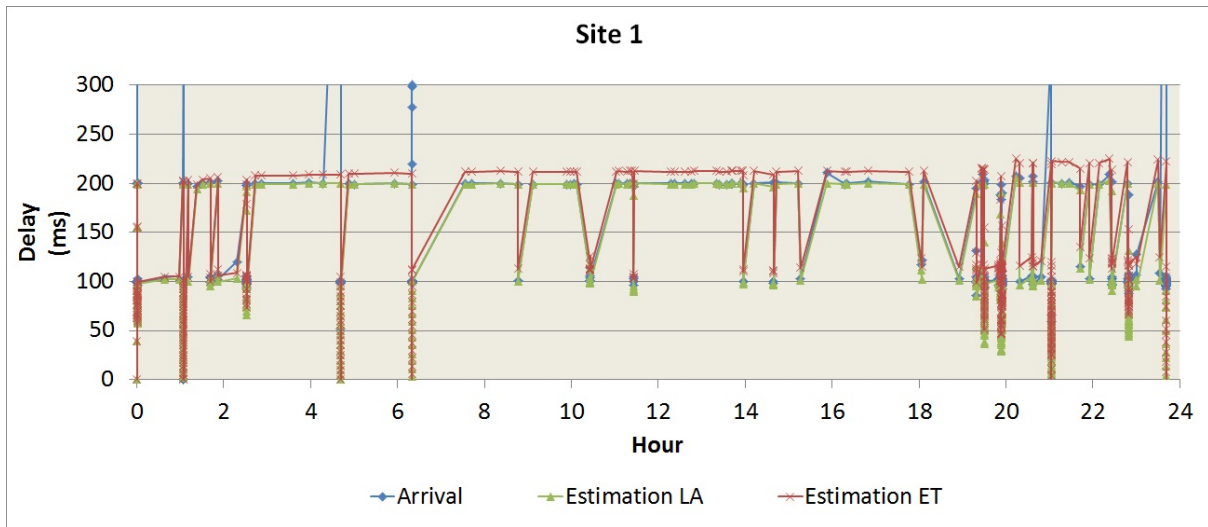
$\text{trust\_level}_i < \text{threshold}_i$  and  $S$  is actually untrusted. Otherwise, the FD made a mistake.

For evaluating the Impact FD, we used three of the QoS metrics proposed in [8]: *detection time*, *average mistake rate*, and *query accuracy probability*. Considering that  $p$  monitors  $S$ , the QoS of the Impact FD at  $p$  must take into account the transitions between “trusted” to “untrusted” states of  $S$ .

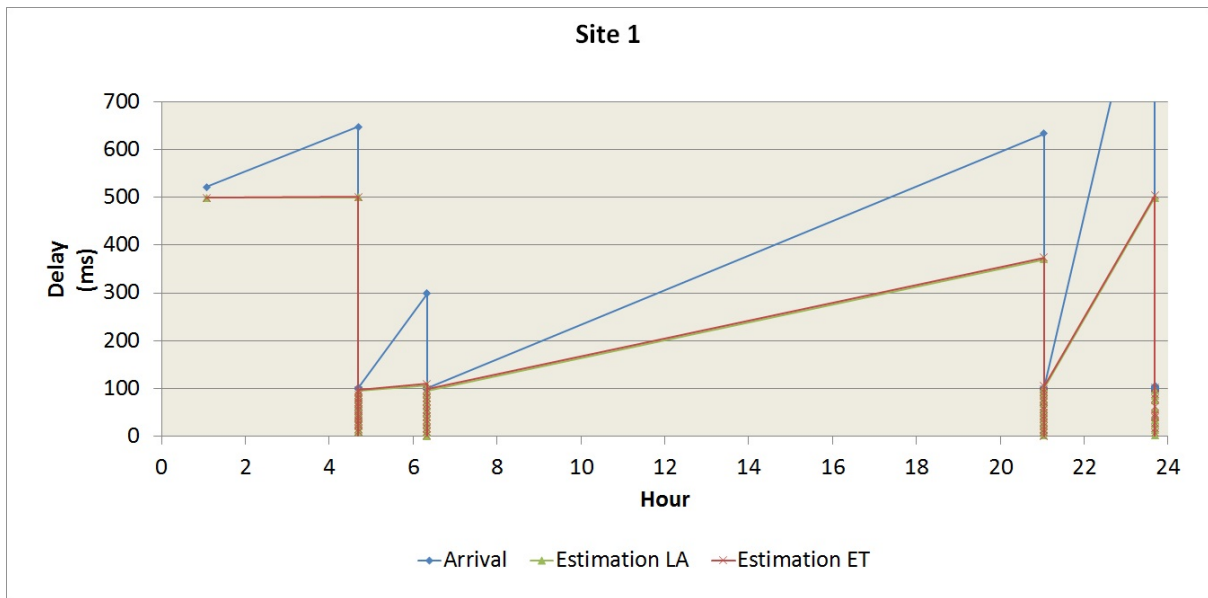
- *Detection Time* ( $T_D$ ): In [8], the  $T_D$  is defined as the time elapsed from the moment process  $q$  crashes until the FD at  $p$  starts suspecting  $q$  permanently. In the case of the Impact FD, the detection time ( $T_D$ ) of  $p$  in relation to  $S$  is the time elapsed till the monitor process reports a suspicion that leads to a status transition in  $S$  from *trusted* to *untrusted*. To this end, for each freshness point of a process  $q$  in  $S$ , it is necessary to check which process failures would lead to a state transition of  $S$  from *trusted* to *untrusted* and then compute the detection time  $T_D$  for each of these processes. The latter is the time elapsed between the current freshness ( $\tau_{i+1}$ ) and the last heartbeat arrival ( $A_i$ ) with respect to the previous freshness point, i.e.,  $\tau_{i+1} - A_i$ , from each of these processes. If there is more than one process  $q \in S$  which could lead to the transition, i.e.,  $S_f = q \in \text{trusted}_i | (\text{trust\_level}_i - \text{Impact}(q)) < \text{threshold}_i$ , the  $T_D$  in relation to  $S$  is the greatest of them:  $T_D = \max(\tau_{i+1} - A_i), \forall q \in S_f$ . Figure 6 shows an example where  $S^*$  has just one subset with three processes whose impact factor is 1. The  $\text{threshold}^S$  defines that at least two processes must be correct. Note that at  $\tau_{i+3}$ , process  $p$  did not receive the heartbeat message from  $q_1$  and, therefore,  $p$  removes it from its trusted set ( $\text{trusted}_p = \{q_2, q_3\}$ ). However,  $S$  remains trusted for  $p$  because the trust level satisfies the threshold. At freshness point  $\tau_{i+5}$ , FD verifies if the failure of any of the processes of  $\text{trusted}_p$  ( $q_2$  and  $q_3$ ) can lead to  $S$  transition ( $\text{trust\_level}_1 < \text{threshold}_1$ ). For this purpose,  $p$  computes the  $T_D$  for each of the two processes. The  $T_D$  in relation to  $S$  is the greatest among  $T_D$  of  $q_2$  and  $T_D$  of  $q_3$ . Since  $p$  did not receive a heartbeat from  $q_2$ ,  $S$  becomes *untrusted*. Transitions between “trusted” and “untrusted” states for 3 processes with impact factor 1 within a single subset. At least two processes must be correct.
- *Average Mistake Rate* ( $\lambda_R$ ): represents the number of mistakes that the FD makes per unit of time, i.e., the rate at each the FD makes mistakes.
- *Query Accuracy Probability* ( $P_A$ ): the probability that the FD output is correct at a random time.

## 7.3. Asynchronous System (AS)

For this evaluation we consider an *AS*, i.e., links are lossy asynchronous. Table 5 shows five configurations with regard to impact factor values that have been considered for  $S^*$  in the experiments. The sum of the impact factor of



**FIGURE 4.** The behavior of the arrival times when the timeout expires in Site 1 for  $\beta = 100ms$  and  $\mu = 100$  for 24 hours. The points correspond to the times where mistakes took place.



**FIGURE 5.** The behavior of the arrival times when the timeout expires in Site 1 for  $\beta = 400ms$  and  $\mu = 100$  for 24 hours. The points correspond to the times where mistakes took place.

the processes is 90 for all configurations.

### 7.3.1. Experiment 1 - Query Accuracy Probability

The aim of this experiment is to evaluate the Query Accuracy Probability ( $P_A$ ) with different threshold values (64, 70, 74, 80, and 83) and different impact factor configurations (Table 5). The safety margin was set to 400ms ( $\beta=400ms$ ).

Figure 7 shows that in most cases the  $P_A$  decreases when the threshold increases. It should be remembered that the *threshold* is a limit value defined by the user and if the FD trust level output value is equal to, or greater than, the threshold, the confidence on the set of processes is ensured. Hence, the results confirm that when

the threshold is lower, the Query Accuracy Probability is higher.

On the one hand, except for threshold 83, “S\* 0” configuration has the highest  $P_A$  for most of the *thresholds* due to the assignment of high (resp., low) impact factors for the most stable (resp., unstable) sites. On the other hand, “S\* 2” and “S\* 4” have the lowest  $P_A$  since unstable sites have high impact factor values assignment. For instance, in “S\* 2” the high impact factor value of unstable sites 8 and 9 with standard deviation of 100 and 18 ms respectively degrades the  $P_A$  of this set.

“S\* 4” shows a sharp decline of the  $P_A$  curve when the *threshold* = 83. This behavior can be explained since, in this set configuration, all sites have the same impact

TABLE 5. Set Configurations ( $S^*$ ).

Configuration	Impact Factor of each site
$S^* 0$	$\{\langle q_1, 7 \rangle, \langle q_2, 3 \rangle, \langle q_3, 20 \rangle, \langle q_4, 20 \rangle, \langle q_5, 3 \rangle, \langle q_6, 20 \rangle, \langle q_7, 3 \rangle, \langle q_8, 7 \rangle, \langle q_9, 7 \rangle\}$
$S^* 1$	$\{\langle q_1, 7 \rangle, \langle q_2, 20 \rangle, \langle q_3, 20 \rangle, \langle q_4, 3 \rangle, \langle q_5, 3 \rangle, \langle q_6, 20 \rangle, \langle q_7, 3 \rangle, \langle q_8, 7 \rangle, \langle q_9, 7 \rangle\}$
$S^* 2$	$\{\langle q_1, 20 \rangle, \langle q_2, 7 \rangle, \langle q_3, 3 \rangle, \langle q_4, 3 \rangle, \langle q_5, 7 \rangle, \langle q_6, 3 \rangle, \langle q_7, 7 \rangle, \langle q_8, 20 \rangle, \langle q_9, 20 \rangle\}$
$S^* 3$	$\{\langle q_1, 7 \rangle, \langle q_2, 3 \rangle, \langle q_3, 20 \rangle, \langle q_4, 3 \rangle, \langle q_5, 3 \rangle, \langle q_6, 20 \rangle, \langle q_7, 7 \rangle, \langle q_8, 20 \rangle, \langle q_9, 7 \rangle\}$
$S^* 4$	$\{\langle q_1, 10 \rangle, \langle q_2, 10 \rangle, \langle q_3, 10 \rangle, \langle q_4, 10 \rangle, \langle q_5, 10 \rangle, \langle q_6, 10 \rangle, \langle q_7, 10 \rangle, \langle q_8, 10 \rangle, \langle q_9, 10 \rangle\}$

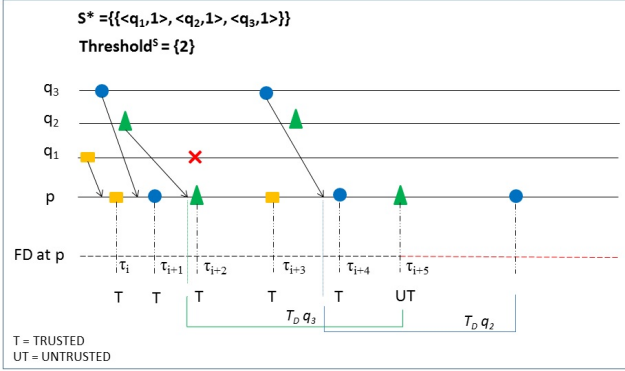


FIGURE 6. Transitions between “trusted” and “untrusted” states for 3 processes with impact factor 1 within a single subset. At least two processes must be correct.

factor (10) which implies that every false suspicion renders the *trust\_level* smaller than the *threshold* (83), increasing the mistake duration. Therefore, the Query Accuracy Probability decreases.

Notice that site 2 failed after approximately 48 hours. Thus, after its crash, the FD output, which indicates *trust\_level* smaller than the *threshold*, is not a mistake, i.e. it is not a false suspicion. Hence, in “ $S^* 1$ ”, where the impact factor of site 2 is 20 (high), the  $P_A$  is constant for a *threshold* greater than 70: after the crash of site 2, the FD output is always smaller than the *threshold* and false suspicions related to other sites do not alter it. The average mistake duration in the experiment is thus smaller after the crash, which improves the  $P_A$ .

Finally, we compared the  $P_A$  of the Impact FD and a FD approach that monitors processes individually by applying Chen’s algorithm considering the 100 most recent heartbeats ( $WS=100$ ) and  $\beta=400$ ms. For the latter, the metric is the average of the  $P_A$  value of all sites of  $S$ :  $\overline{P_A} = \frac{\sum_{x=1}^n P_{Ax}}{n}$ , for  $n = 9$  and  $x$  equals to the index of each site in  $S$ . Thus, the obtained mean  $P_A$  ( $\overline{P_A}$ ) is equal to 0,979788. This result shows that, regardless of the set ( $S^*$ ) configuration, the Impact FD has a higher  $P_A$  than Chen’s FD since the former has enough flexibility to tolerate failures, i.e., the mistake duration only starts to be computed when the *trust\_level* provided by Impact FD is smaller than the *threshold*, in contrast with individual monitoring, such as that by Chen FD, where every false suspicion increases the mistake duration.

The results of this experiment highlight the fact that the

assignment of heterogeneous impact factors to nodes can degrade the performance of the failure detector, especially when unstable sites have a high impact factor.

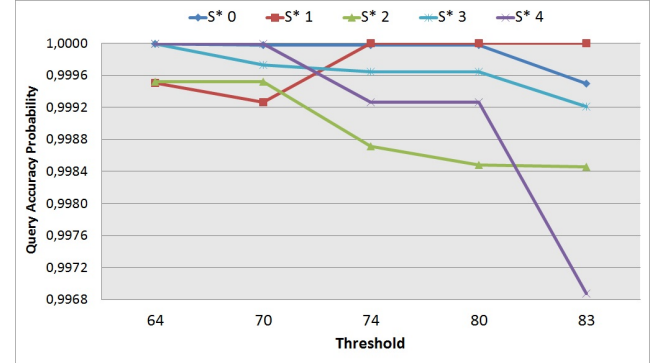


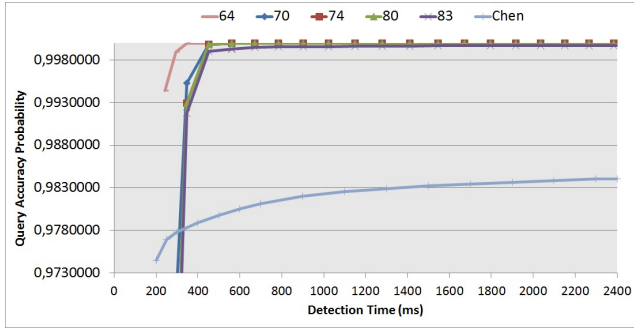
FIGURE 7. AS System:  $P_A$  vs. threshold with different set configurations ( $S^*$ ).

### 7.3.2. Experiment 2 - Query Accuracy Probability vs. Detection time

In the second experiment, we evaluated the average Query Accuracy Probability ( $P_A$ ) regarding the average detection time ( $T_D$ ) for different threshold values (64, 70, 80, and 83). In order to obtain different values for the detection time, we varied the safety margin (Chen’s estimation) with intervals of 100 ms, starting at 100 ms. For this experiment, we chose the “ $S^* 0$ ” configuration since it presented the best  $P_A$  in Experiment 1. We also evaluated the  $P_A$  and  $T_D$  for Chen’s algorithm, which outputs the set of suspected nodes. For the latter, the  $T_D$  is computed as the average of the individual  $T_D$  of all sites of  $S$ :  $\overline{T_D} = \frac{\sum_{x=1}^n T_{Dx}}{n}$ .

Figure 8 shows that for a high threshold and detection time close to 200 ms, the  $P_A$  of the Impact FD is quite small, independently of the threshold, because the safety margin (used to compute the expected arrival times) is, in this case, equal to 100 ms, which increases both the number of false suspicions and mistake duration. However, when  $T_D$  is greater than 230 ms, the  $P_A$  of Impact FD is considerably higher than that of Chen. After a detection time of approximately 400 ms, the  $P_A$  of Impact FD becomes constant regardless of the detection time and threshold, and gets close to 1. Such a behavior can be explained since the higher the safety margin, the smaller the number of false suspicions, and the shorter the mistake duration which confirms that when the timeout is short, failures are detected faster but the probability of

having false detections increases [27].



**FIGURE 8.** AS System:  $P_A$  vs.  $T_D$  with different thresholds.

### 7.3.3. Experiment 3 - Average mistake rate

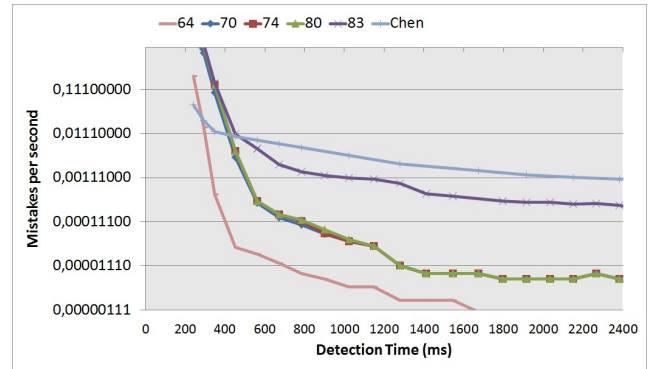
In this experiment, we evaluated the average detection time ( $T_D$ ) vs. the mistake rate ( $\lambda_R$ ) (mistakes per second). For Chen's algorithm, the  $\lambda_R$  is computed as the average of the individual  $\lambda_R$  of all sites of  $S$ :  $\overline{\lambda_R} = \frac{\sum_{x=1}^n \lambda_{R_x}}{n}$ . We considered the "S\* 0" configuration and the mistake rate is expressed in a logarithmic scale.

We can observe in Figure 9 that the mistake rate of the Impact FD is high when the detection time is high (i.e., smaller than 400 ms) and the threshold is high (i.e., from 80 to 83). Such a result is in accordance with Experiment 2: whenever the safety margin is small and *threshold* tolerates fewer failures, the Impact FD makes mistakes more frequently. In other words, the mistake rate decreases when the threshold is low or the detection time increases.

### 7.3.4. Experiment 4 - Cumulative number of mistakes

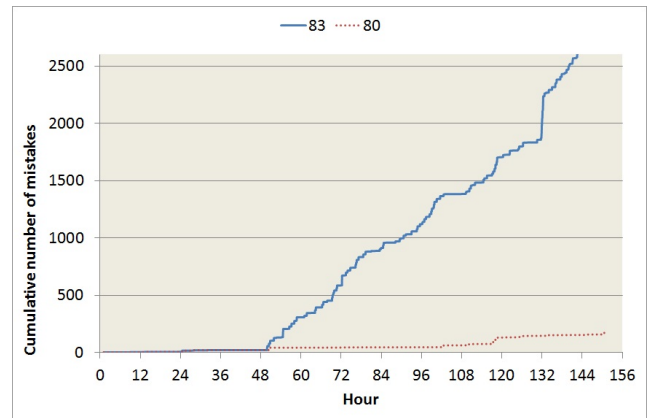
Figure 10 shows the cumulative number of mistakes for "S\* 0" during the whole trace period, considering  $\beta=400$ ms and threshold value equals either to 80 or 83.

We can observe in the figure that the cumulative number of mistakes is greater when the threshold value is equal to 83 (2754 mistakes) when compared to the threshold value equals to 80 (179 mistakes). The former makes few mistakes until approximately the hour 48 (when the site 2 crashed). After that, the number of cumulative mistakes significantly increases because, since the threshold is high (83) and the failure of site 2 was detected, false suspicions of any other site induce a *trust\_level* value smaller than 83 in most cases. For instance, site 8 is highly unstable and has impact factor value of 7. Whenever there is a false suspicion about it, after the crash of site 2, the *trust\_level* value is 80. On the other hand, for the threshold 80, there are fewer instability periods since the crash of site 2 does not have much impact on the confidence of the system. At hour 48, there is an increase in the cumulative number of mistakes due to the unstable period of site 9, as shown in Figure 2. From hour 50 to 100, the FD makes fewer mistakes.



**FIGURE 9.** AS System:  $\lambda_R$  vs.  $T_D$  with different thresholds.

Such a behavior can be explained since, as observed in the same figure, all sites, with exception of site 8, also have this same period of stability. After hour 108, there is a greater number of mistakes which is related to the instability of sites 1, 7, and 8 (see Figure 2).



**FIGURE 10.** AS System: Cumulative number of mistakes for "S\* 0" configuration.

### 7.3.5. Experiment 5 - Query Accuracy Probability vs. Time

In this experiment, we divided the execution trace duration by fixed intervals of time and computed the average Query Accuracy Probability ( $P_A$ ) for each of them. We chose the "S\* 0" configuration,  $\beta=400$ ms, and the threshold values of 80 and 83. Similarly to the cumulative number of mistakes (Experiment 4), we observe in Figure 11 that instability periods have an impact in the  $P_A$ . For instance, for the threshold = 80, from hour 108, the cumulative number of mistakes increases very fast. Consequently, the  $P_A$  decreases. The period of instability of site 9 is the responsible for the important reduction of the  $P_A$  at hour 60 (i.e., from hour 48 to 60) when threshold = 83. A new degradation of the  $P_A$  happens at hour 120 (i.e., from hour 108 to 120), due to unstable periods of the sites 1, 7, and 8.



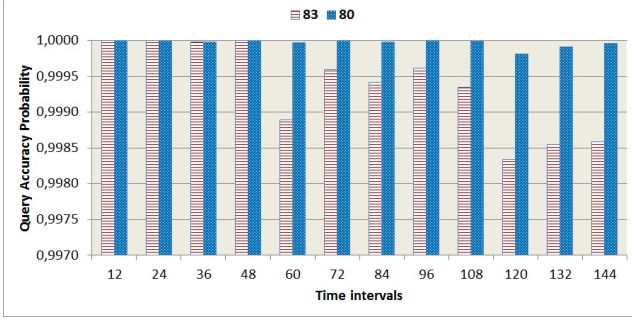


FIGURE 11. AS System:  $P_A$  vs. Time.

#### 7.4. Weak $\diamond$ -timely System (W-ET)

In this section, we consider the *W-ET* system described in Section 7.1.1: site 0, the monitor site, is connected by  $\diamond$ -timely links to sites 2, 3, 4 and 6 and by *lossy asynchronous* links to 1, 5, 7, 8, and 9.

We defined the set  $S^*$  with three subsets and all sites have the same impact factor (1) :

$$S^* = \{\{\langle q_1, 1 \rangle, \langle q_3, 1 \rangle, \langle q_4, 1 \rangle\}, \{\langle q_2, 1 \rangle, \langle q_5, 1 \rangle, \langle q_6, 1 \rangle\}, \{\langle q_7, 1 \rangle, \langle q_8, 1 \rangle, \langle q_9, 1 \rangle\}\}$$

The *threshold*<sup>S</sup> was defined as follows:

$$\text{threshold}^S = \{2, 2, 2\}$$

The *threshold*<sup>S</sup> defines that the subsets  $S_1$ ,  $S_2$  and  $S_3$  must have at least two correct processes. As this experiment assigns *W-ET* to *model* parameter, it uses the  $\eta$  value and the heartbeat arrival estimation value is incremented by  $\eta$  at every  $\mu$  heartbeat arrivals, if false suspicions occurred during this period.

The experiments were carried out just for the first 24 hours of the traces, because after this time the failure detector does not make more mistakes for the set  $S^*$ .

##### 7.4.1. Experiment 6 - Eventually Timely Links vs Asynchronous Links

In this experiment, we compare the results obtained taking into account the above  $S^*$  configuration and both systems *W-ET* and *AS*. The evaluation metrics are shown in Table 6. We set the value of safety margin  $\beta$  to  $50ms$  and  $\eta$  to  $500\mu s$ . This safety margin value is quite aggressive, which, consequently, leads the failure detector prone to make mistakes. For the *W-ET* system, we also varied  $\mu$ : 1, 10, and 100.

The first three rows of the table show the results for the *W-ET* system and the last row for the *AS* system. We can observe that the number of mistakes increases for different values of  $\mu$  in the *W-ET*, but it is much smaller when compared to the *AS* (4689 mistakes). As a consequence, in the *AS*, the *mistake rate* is higher and  $P_A$  is lower. In contrast, the average mistake duration in the *AS* (27.70 ms) is smaller than in the *W-ET* (around 43 ms). Such a difference occurs because

the *AS* system has a lower timeout which induces false suspicions more often. Nevertheless, a heartbeat message may arrive immediately after the expiration of the timeout, generating a short mistake time. On the other hand, in the *W-ET*, the timeout value increases when there are false suspicions in periods of greater instability where messages take longer to arrive. For the *W-ET* system, we can observe that the time of the last mistake was at 64 minutes (heartbeat number 349,341) whereas in the *AS* system mistake occurrences are observable until the last hour (24h, heartbeat number 7749909). This happens because in the *W-ET* the heartbeat arrival estimation value is incremented by  $\eta$  when  $p$  falsely suspects the process within a period of  $\mu$  heartbeats, which allows  $p$  to eventually get every heartbeat message from a site before the timeout expires. It is worth remarking that the number of mistakes reduces drastically, but the  $T_D$  does not increase at the same rate.

Table 7 summarizes the results of the experiments considering  $\beta = 100ms$  and  $\eta = 500\mu s$ . When comparing the two tables, we observe that with a less aggressive safety margin  $\beta$ , the number of mistakes reduces, especially in the *AS* system (231). Accordingly, the *mistake rate* decreases and  $P_A$  increases in both systems. The last mistake is around 64 minutes in the *W-ET* while *AS* made mistakes until hour 24. The  $T_D$  of the *AS* reduces because it has a higher safety margin and makes fewer mistakes. For instance, with  $\beta = 50ms$ , two processes, whose maximum  $T_D$  is 300ms, that has the timeout expired, leads the set  $S^*$  to a state *untrusted*. However, with  $\beta = 100$  only one of them is suspected which does not lead a transition of state from *trusted* to *untrusted*.

We also conducted the same experiment with  $\beta = 100ms$  and  $\eta = 1ms$  for the *W-ET* system (Table 8). We can note that the number of mistakes is reduced. On the other hand, with few mistakes, especially with  $\mu = 1ms$ , both the average mistake duration and  $T_D$  increase. Based on these results, we can conclude that setting  $\mu$  with a value greater than 1 is more suitable for this scenario, achieving, therefore, a better trade-off between detection time and accuracy of the Impact FD.

## 8. RELATED WORK

We can divide related work into two groups: (1) unreliable failure detectors, and (2) heartbeat arrival estimation strategies.

**Unreliable failure detectors:** Most of the unreliable failure detectors in the literature are based on a binary model and provide as output a set of process identifiers, which usually informs the set of processes currently suspected of having failed ([3] [4]). However, in some detectors, such as class  $\Sigma$  (resp.,  $\Omega$ ) [23], the output is the set of processes (resp., one process) which are (resp., is) not suspected of being faulty, i.e., *trusted*.

The Accrual failure detector [24] proposes an approach where the output is a suspicion level on a continuous

**TABLE 6.** *W-ET vs AS -  $\beta = 50ms, \eta = 500\mu s$ .*

$\mu$	Mistakes	Mistake rate	$P_A$	Avg Mistake Duration (ms)	Time last mistake (min)	HB Number	$T_D$ (ms)
1	152	0.0017	0.99992	43.36	64 (1h)	349341	234.0
10	324	0.0037	0.99983	43.69	64 (1h)	349341	182.0
100	383	0.0044	0.99979	45.18	64 (1h)	349341	173.0
AS	4689	0.0542	0.99849	27.70	1438 (24h)	7749909	151.0

**TABLE 7.** *W-ET vs AS -  $\beta = 100ms, \eta = 500\mu s$ .*

$\mu$	Mistakes	Mistake rate	$P_A$	Avg Mistake Duration (ms)	Time last mistake (min)	HB Number	$T_D$ (ms)
1	84	0.00097	0.99995	48.35	64 (1h)	349341	273.8
10	121	0.00140	0.99993	48.28	64 (1h)	349341	224.0
100	135	0.00156	0.99993	44.53	64 (1h)	349341	219.6
AS	231	0.00267	0.99989	37.56	1431 (24h)	7708057	208.0

scale, rather than providing information of a binary nature (trusted or suspected). The suspicion level captures the degree of confidence with which a given process is believed to have crashed. If the process actually crashes, the value is guaranteed to accrue over time and tends toward infinity. Like the Accrual FD, Impact FD provides a non-binary output, however, the latter is related to the system as a whole and not to each process individually. On the other hand, some important features advocated by the authors in [28] for Accrual FD, can also be extended to our proposal. The authors argue that the aim of Accrual failure detectors is to decouple monitoring from interpretation. Hence, the accrual failure detectors provide a lower level abstraction that avoids having to interpret monitoring information. For instance, by setting an appropriate threshold, applications can trigger suspicions and take appropriate action, similarly to the Impact FD.

Starting from the premise that applications should have information about failures to take specific and suitable recovery actions, the work in [29] proposes a service to report faults to applications. The latter also encapsulates uncertainty which allows applications to proceed safely in the presence of doubt. The service provides status reports related to fault detection with an abstraction that describes the degree of uncertainty.

Considering that each node has a probability of being byzantine, a voting node redundancy approach is presented in [30] in order to improve reliability of distributed systems. Based on such probability values, the authors estimate the minimum number of machines that the system should have in order to provide a degree of reliability which is equal to or greater than a threshold value.

In [31], the authors propose the use of a reputation mechanism to implement a failure detector for large and dynamic networks. The reputation mechanism allows node cooperation through the sharing of views about other nodes. The proposed approach exploits information about the behavior of nodes to increase its quality in terms of detection. When classifying the behavior of the nodes, the FD includes a reputation service where the nodes periodically exchange heartbeat messages.

**Heartbeat arrival estimation strategies:** In the timer-based FD algorithms presented in section 6, we used the heartbeat arrival estimation proposed by [8]. With the same aim of Chen’s algorithm, i.e., minimize false suspicions and failure detection time, several other estimation approaches have been proposed in the literature. They dynamically predict new heartbeat arrivals based on observed communication delays of the past heartbeat history.

In [4], Bertier, Marin and Sens introduced a failure detector that was mainly intended for LAN environments. Their heartbeat arrival estimation approach combines of Chen’s estimation with a dynamic estimation based on Jacobson’s estimation [32]. The latter is used in the protocol TCP to estimate the delay after which a node retransmits its last message. Basically, the estimation of the next heartbeat arrival is calculated by adding Chen’s estimation to a safety margin given by Jacobson’s algorithm. Their approach provides a shorter detection time, but generates more false suspicions than Chen’s estimation, according to the authors’ measurements on a LAN.

The  $\phi$  Accrual failure detector is based [24] on inter-arrival estimation time, assuming that the latter follow a normal distribution. The Accrual FD dynamically adapts current network conditions based on the suspicion level. Similarly to the above FD [4] and [8], the estimation protocol samples the arrival time of heartbeats and maintains a sliding window of the most recent samples. The distribution of past samples is then used as an approximation for the probabilistic distribution of future heartbeat messages. With this information, it is possible to compute a value  $\phi$  with a scale that changes dynamically to match recent network conditions.

In [27], the authors extended the Accrual FD by exploiting the histogram density estimation. Taking into account a sampled inter-arrival time and the time of the last received heartbeat, the algorithm estimates the probability that no further heartbeat messages will arrive from a given process, i.e., it has failed.

The ANNFD presented in [33] is a failure detector based

**TABLE 8.** *W-ET vs AS -  $\beta = 100ms, \eta = 1ms$ .*

$\mu$	Mistakes	Mistake rate	$P_A$	Avg Mistake Duration (ms)	Time last mistake (min)	HB Number	$T_D$ (ms)
1	6	0.000069	0.999990	140.00	64 (1h)	349339	689.5
10	45	0.000520	0.999972	53.07	64 (1h)	349341	383.9
100	98	0.001133	0.999945	47.99	64 (1h)	349341	243.9
AS	231	0.002672	0.999899	37.56	1431 (24h)	7708057	226.8

on artificial neural networks. It uses as input parameters variables collected by the Simple Network Management Protocol (SMNP) that characterize the network traffic at each time instant. After training the neural network, it must compute the message arrival time estimation  $EA_{k+1}$ , which is used to define the freshness point.

By observing the changes in the computing environment and exploiting both the feedback control theory and user-defined QoS constraints, the autonomic failure detector (AFD) proposed in [34] dynamically configures the monitoring period and detection timeout value. A new metric, denoted failure detector availability (AV), is also defined. It suggests a safety margin ( $\alpha$ ) in such a way to decrease failure detector mistakes and to achieve the desired detection availability. If the detection service is inaccurate (i.e., AV is low), then the safety margin is increased to improve detection accuracy; otherwise, if AV is high, then  $\alpha$  is decreased to improve the detection speed.

Related work concerning FD's implementations presents different approaches to estimate the timeout. The QoS of failure detectors depends on the choice of heartbeat arrival estimation strategy: a short timeout leads a FD to detect failures quickly, but may increase the number of false suspicions decreasing, consequently, its accuracy. We propose a new unreliable failure detector and its focus is not in heartbeat arrival estimation strategies. However, implementations of Impact FD may use different approaches to estimate the timeout. In the case of the timer-based Impact FD implementation of Section 6 (Algorithm 2), we use the heartbeat arrival estimation proposed by [8]. The reason for Chen's algorithm choice is that it is a comparison reference for all FD performance studies. We should emphasize that to use another one, it is just necessary to change the code of the function *Timeout()* (Algorithm 1) called by Algorithm 2. For the Chen's estimation algorithm, we consider the safety margin suggested by the authors, adding a dynamic increment for eventual timely links. Note that although the estimation solutions proposed by Chen's and Accrual FDs [24] [27] have similar performance (mistake rate X detection time) over a wide-area network (environment of our experiments), the Accrual FD estimation requires tuning of the threshold parameter for each process and depends on application characteristics. It is important also to point out that Bertier, AFD, and ANNFD estimations were designed to local area networks where messages are rarely lost while the 2W-FD [25] has been tailored for unstable network scenarios such as latency jitter or switch contention.

## 9. CONCLUSION AND FUTURE WORK

This paper introduced the *Impact* failure detector that provides an output that expresses the trust of the FD with regard to the system (or set of processes) as a whole.

It is configured by the *impact factor* and the *threshold* which enable the user to define the importance (e.g., degree of reliability) of each node and an acceptable margin of failures respectively. It is thus suitable for environments where there is node redundancy or nodes with different capabilities. Both the *impact factor* and the *threshold* render the estimation of the confidence in the system (or a set of processes  $S$ ) more flexible. In some scenarios, the failure of low impact or redundant nodes does not jeopardize the confidence in  $S$ , while the crash of a high impact factor one may seriously affect it. Either a softer or a stricter monitoring is, therefore, possible.

We have defined two properties,  $PR(IT)_p^S$  and  $PR(\diamond IT)_p^S$ , which denote the capacity of the Impact FD of accepting different set of trusted processes that lead to the confidence in  $S$ . Then, we presented a timer-based implementation of the Impact FD, which can be applied to systems whose links are *lossy asynchronous* or those whose all (or some) are  $\diamond$ -*timely*. Performance evaluation results, based on real PlanetLab traces, showed that the assignment of a high (resp. low) impact factor to more stable (resp. unstable) nodes increases the Query Accuracy Probability of the failure detector. Furthermore, we observed that the Impact FD might weaken the rate of false suspicions when compared with the traditional Chen's unreliable failure detector. Additionally, in the experiments carried out considering a W-ET system, it was observed that the number of mistakes reduces drastically when compared with the AS system, however the *detection time* does not increase in the same rate. Therefore, such results confirm the degree of flexible applicability of the Impact FD, that both failures and false suspicions are more tolerated than in traditional FDs, and that the former presents better QoS than the latter if the application is interested in the degree of confidence in the system (trust level) as a whole.

In the near future, we intend to generalize the trust level calculation as well as its comparison with the threshold. To this end, the *Trust\_level(trusted, S\*)* function can perform an operation over the impact factor of the trusted processes other than the sum (e.g., multiplication, average, etc.) and the threshold will not necessary be a lower bound (e.g., upper bound, equality, etc.). For instance, suppose that the impact factor of a node corresponds to the probability that it behaves maliciously.

The trust level, in this case, would express the probability that all nodes of the system behave maliciously. Thus, the *trust\_level* sum operation would be replaced by multiplication operation and should be smaller than a reliability threshold value.

Another research direction is to render the impact factor dynamic, i.e., the impact factor of a node can vary during execution, depending on the current degree of reliability of the node or its current reputation, its past history of stable/unstable periods, etc. Finally, we also aim at extending performance experiments to other networks such as MANET or LAN, comparing the performance of Impact FD with other well-known failure detectors.

## 10. ACKNOWLEDGMENT

This work was partially supported by grant 012909/2013-00 from the Brazilian Research Agency (CNPq).

## REFERENCES

- [1] PlanetLab (2014). Planetlab. <http://www.planet-lab.org>. "Online. Access date: September 16, 2016".
- [2] Fischer, M., Lynch, N., and Paterson, M. (1985) Impossibility of distributed consensus with one faulty process. *Journal of the ACM (JACM)*, **32**, 374–382.
- [3] Chandra, T. D. and Toueg, S. (1996) Unreliable failure detectors for reliable distributed systems. *Journal of the ACM (JACM)*, **43**, 225–267.
- [4] Bertier, M., Marin, O., and Sens, P. (2003) Performance analysis of a hierarchical failure detector. *2003 International Conference on Dependable Systems and Networks (DSN)*, San Francisco, CA, USA, 22–25 June, pp. 635–644. IEEE Computer Society.
- [5] Rossetto, A., Geyer, C., Arantes, L., and Sens, P. (2015) A failure detector that gives information on the degree of confidence in the system. *Symposium on Computers and Communication*, Larnaca, Cyprus, 6–9 July, pp. 532–537. IEEE Computer Society.
- [6] Aguilera, M., Delporte-Gallet, C., Fauconnier, H., and Toueg, S. (2004) Communication-efficient leader election and consensus with limited link synchrony. *Proceedings of the Twenty-Third Annual ACM Symposium on Principles of Distributed Computing, PODC*, St. John's, Newfoundland, Canada, 25–28 July, pp. 328–337. ACM.
- [7] Junqueira, J., Marzullo, K., Herlihy, M., and Penso, L. (2010) Threshold protocols in survivor set systems. *Distributed Computing*, **23**, 135–149.
- [8] Chen, W., Toueg, S., and Aguilera, M. (2002) On the quality of service of failure detectors. *IEEE Transactions on Computers*, **51**, 561–580.
- [9] Ishibashi, K. and Yano, M. (2005) A proposal of forwarding method for urgent messages on an ubiquitous wireless sensor network. *6th Asia-Pacific Symposium on Information and Telecommunication Technologies*, Yangon, Myanmar, 9–10 Nov, pp. 293–298. IEEE.
- [10] Geeta, D., Nalini, N., and Biradar, R. (2013) Fault tolerance in wireless sensor network using hand-off and dynamic power adjustment approach. *Journal of Network and Computer Applications*, **36**, 1174–1185.
- [11] Rehman, A., Abbasi, A., Islam, N., and Shaikh, Z. (2014) A review of wireless sensors and networks' applications in agriculture. *Computer Standards & Interfaces*, **36**, 263–270.
- [12] Hayashibara, N., Défago, X., and Katayama, T. (2003) Two-ways adaptive failure detection with the  $\phi$ -failure detector. *Workshop on Adaptive Distributed Systems (WADiS03)*, Sorrento, Italy, Oct, pp. 22–27. Citeseer.
- [13] Bonnet, F. and Raynal, M. (2013) Anonymous asynchronous systems: the case of failure detectors. *Distributed Computing*, **26**, 141–158.
- [14] Arévalo, S., Fernández Anta, A., Imbs, D., Jiménez, E., and Raynal, M. (2012) Failure detectors in homonymous distributed systems (with an application to consensus). *2012 IEEE 32nd International Conference on Distributed Computing Systems*, Macau, China, 18–21 June, pp. 275–284. IEEE Computer Society.
- [15] Larrea, M., Anta, A. F., and Arévalo, S. (2013) Implementing the weakest failure detector for solving the consensus problem. *IJPEDES*, **28**, 537–555.
- [16] Aguilera, M. K., Delporte-Gallet, C., Fauconnier, H., and Toueg, S. (2003) On implementing omega with weak

- reliability and synchrony assumptions. *Proceedings of the Twenty-Second ACM Symposium on Principles of Distributed Computing PODC*, Boston, Massachusetts, USA, July 13-16, pp. 306–314. ACM.
- [17] Mostéfaoui, A., Mourgaya, E., and Raynal, M. (2003) Asynchronous implementation of failure detectors. *International Conference on Dependable Systems and Networks (DSN)*, San Francisco, CA, USA, 22-25 June, pp. 351–360. IEEE Computer Society.
- [18] Arantes, L., Greve, F., Sens, P., and Simon, V. (2013) Eventual leader election in evolving mobile networks. *17th International Conference Principles of Distributed Systems, OPODIS*, Nice, France, 16-18 December, pp. 23–37. Springer.
- [19] Gómez-Calzado, C., Lafuente, A., Larrea, M., and Raynal, M. (2013) Fault-tolerant leader election in mobile dynamic distributed systems. *IEEE 19th Pacific Rim International Symposium on Dependable Computing, PRDC*, Vancouver, BC, Canada, 2-4 December, pp. 78–87. IEEE Computer Society.
- [20] Larrea, M., Fernández, A., and Arévalo, S. (2004) On the implementation of unreliable failure detectors in partially synchronous systems. *IEEE Transactions on Computers*, **53**, 815–828.
- [21] Delporte-Gallet, C., Fauconnier, H., Guerraoui, R., and Kouznetsov, P. (2005) Mutual exclusion in asynchronous systems with failure detectors. *J. Parallel Distrib. Comput.*, **65**, 492–505.
- [22] Bonnet, F. and Raynal, M. (2011) On the road to the weakest failure detector for k-set agreement in message-passing systems. *Theor. Comput. Sci.*, **412**, 4273–4284.
- [23] Delporte-Gallet, C., Fauconnier, H., Guerraoui, R., Hadzilacos, V., Kouznetsov, P., and Toueg, S. (2004) The weakest failure detectors to solve certain fundamental problems in distributed computing. *Proceedings of the Twenty-Third Annual ACM Symposium on Principles of Distributed Computing, PODC*, St. John's, Newfoundland, Canada, 25-28 July, pp. 338–346. ACM.
- [24] Hayashibara, N., Defago, X., Yared, R., and Katayama, T. (2004) The  $\varphi$  accrual failure detector. *23rd International Symposium on Reliable Distributed Systems SRDS*, Florianopolis, Brazil, 18-20 October, pp. 66–78. IEEE Computer Society.
- [25] Tomsic, A., Sens, P., Garcia, J., Arantes, L., and Sopena, J. (2015) 2w-fd: A failure detector algorithm with qos. *IEEE International Parallel and Distributed Processing Symposium (IPDPS)*, Hyderabad, India, 25-29 May, pp. 885–893. IEEE.
- [26] Xiong, N., Vasilakos, A. V., Wu, J., Yang, Y. R., Rindos, A., Zhou, Y., Song, W.-Z., and Pan, Y. (2012) A self-tuning failure detection scheme for cloud computing service. *26th International Parallel & Distributed Processing Symposium (IPDPS)*, Shanghai, China, 21-25 May, pp. 668–679. IEEE.
- [27] Satzger, B., Pietzowski, A., Trumler, W., and Ungerer, T. (2007) A new adaptive accrual failure detector for dependable distributed systems. *ACM Symposium on Applied Computing (SAC)*, Seoul, Korea, 11-15 March, pp. 551–555. ACM.
- [28] Défago, X., Urbán, P., Hayashibara, N., and Katayama, T. (2005) Definition and specification of accrual failure detectors. *International Conference on Dependable Systems and Networks (DSN)*, Yokohama, Japan, 28 June - 1 July, pp. 206–215. IEEE Computer Society.
- [29] Leners, J. B., Gupta, T., Aguilera, M. K., and Walfish, M. (2013) Improving availability in distributed systems with failure informers. *10th USENIX Symposium on Networked Systems Design and Implementation, NSDI*, Lombard, IL, USA, 2-5 April, pp. 427–441. USENIX Association.
- [30] Brun, Y., Edwards, G., Bang, J. Y., and Medvidovic, N. (2011) Smart redundancy for distributed computation. *International Conference on Distributed Computing Systems, ICDCS*, Minneapolis, Minnesota, USA, 20-24 June, pp. 665–676. IEEE Computer Society.
- [31] Véron, M., Marin, O., Monnet, S., and Sens, P. (2015) Repfd-using reputation systems to detect failures in large dynamic networks. *44th International Conference on Parallel Processing, ICPP*, Beijing, China, 1-4 September, pp. 91–100. IEEE Computer Society.
- [32] Jacobson, V. (1988) Congestion avoidance and control. *Symposium Proceedings on Communications Architectures and Protocols, SIGCOMM*, Stanford, California, USA, 16-18 August, pp. 314–329. ACM.
- [33] Macêdo, R. A. and Lima, F. R. L. (2004) Improving the quality of service of failure detectors with snmp and artificial neural networks. *Simpósio Brasileiro de Redes de Computadores, SBRC*, Gramado - RS, Brazil, 10-14 May, pp. 583–586. SBC.
- [34] de Sá, A. S. and Macêdo, R. J. A. (2010) Qos self-configuring failure detectors for distributed systems. *IFIP International Conference on Distributed Applications and Interoperable Systems*, Amsterdam, The Netherlands, 7-9 June, pp. 126–140. Springer Berlin Heidelberg.
- [35] Delporte-Gallet, C., Fauconnier, H., and Guerraoui, R. (2003) Shared memory vs message passing. Technical report. EPFL Lausanne, 200377.
- [36] Chandra, T. D., Hadzilacos, V., and Toueg, S. (1996) The weakest failure detector for solving consensus. *Journal of the ACM (JACM)*, **43**, 685–722.
- [37] Chu, F. (1998) Reducing  $\omega$  to  $\diamond W$ . *Information Processing Letters*, **67**, 289–293.
- [38] Mostéfaoui, A., Rajsbaum, S., Raynal, M., and Travers, C. (2007) From  $W$  to  $\omega$ : A simple bounded quiescent reliable broadcast-based transformation. *J. Parallel Distrib. Comput.*, **67**, 125–129.
- [39] Jiménez, E., Arévalo, S., and Fernández, A. (2006) Implementing unreliable failure detectors with unknown membership. *Inf. Process. Lett.*, **100**, 60–63.
- [40] Bonnet, F. and Raynal, M. (2011) The price of anonymity: Optimal consensus despite asynchrony, crash, and anonymity. *ACM Transactions on Autonomous and Adaptive Systems (TAAS)*, **6**, 23:1–23:28.
- [41] Xiong, N., Vasilakos, A. V., Yang, L. T., Song, L., Pan, Y., Kannan, R., and Li, Y. (2009) Comparative analysis of quality of service and memory usage for adaptive failure detectors in healthcare systems. *IEEE Journal on Selected Areas in Communications*, **27**.