



HAL
open science

RNN-based traffic prediction for pro-active scaling of the AMF

Imad Alawe, Yassine Hadjadj-Aoul, Philippe Bertin, Adlen Ksentini, Davy Darche

► **To cite this version:**

Imad Alawe, Yassine Hadjadj-Aoul, Philippe Bertin, Adlen Ksentini, Davy Darche. RNN-based traffic prediction for pro-active scaling of the AMF. SDN Day 2017 - Software Defined Networks Day, Nov 2017, Paris, France. , pp.1. hal-01657683

HAL Id: hal-01657683

<https://inria.hal.science/hal-01657683>

Submitted on 7 Dec 2017

HAL is a multi-disciplinary open access archive for the deposit and dissemination of scientific research documents, whether they are published or not. The documents may come from teaching and research institutions in France or abroad, or from public or private research centers.

L'archive ouverte pluridisciplinaire **HAL**, est destinée au dépôt et à la diffusion de documents scientifiques de niveau recherche, publiés ou non, émanant des établissements d'enseignement et de recherche français ou étrangers, des laboratoires publics ou privés.

RNN-based traffic prediction for pro-active scaling of the AMF

Imad ALAWE, Yassine HADJADJ-AOUL, Philippe BERTIN – IRT b<>com
Adlen KSENTINI – EURECOM
Davy DARCHE – TDF

Objective

Early reaction to congestion by pro-actively scaling in or out the Access and Mobility Function (AMF) in a way to absorb the congestion induced by massive access of Internet of Things (IoT) devices in 5G networks.

Context

- The upcoming mobile core network (5G) is expected to support Enhanced Mobile Broadband, Massive Machine Type Communication (MTC) and Ultra-low latency, within the same infrastructure [1].
- Network Functions Virtualization (NFV) and Software Defined Networks (SDN) are key enablers for the requirements of 5G.
- AMF in the New Generation Core (NGC) [2] architecture is often overloaded due to the fact of being the only access component over the control plane for a huge number of connected devices. This will be particularly exacerbated with regard to the expected number of IoT devices, which will be handled by future mobile networks.

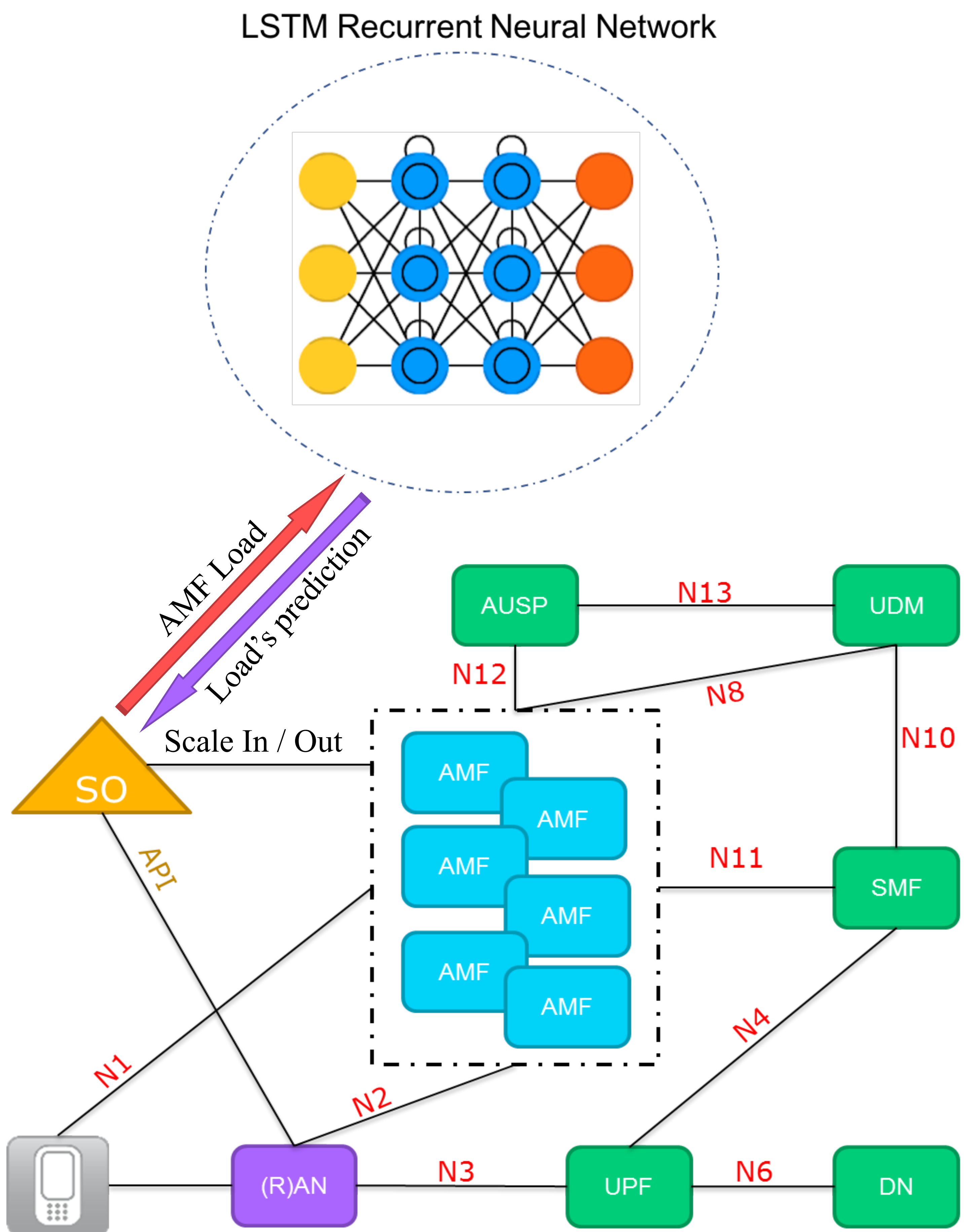
Motivations & Problem Statement

- Following a previous work [3], the AMF overload was proven.
- Scaling issue was addressed using a Control Theory model allowing to scale in /out the AMF depending on the overall load.
- However, the scaling model is not enough to bypass the congestion especially from the moment when applying scaling decisions is not instantaneous.
- Therefore the motivation to explore a pro-active solution based on prediction using machine learning to recognize automatically the traffic pattern related to access requests.

Methodology

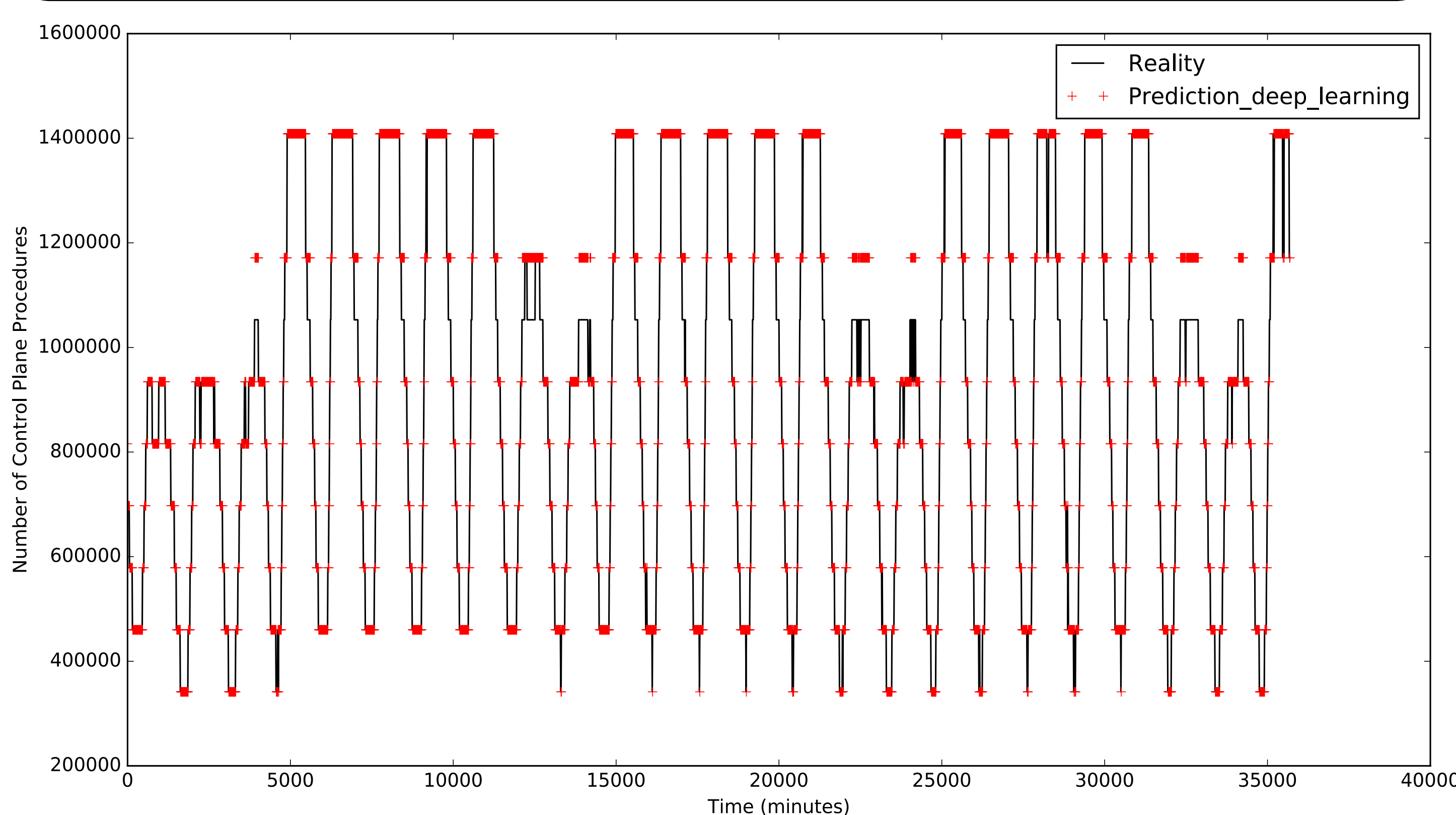
- Real dataset : Hourly phone calls, SMS and Internet communication of an entire city provided by “Telecom Italia Big Data Challenge” [4].
- Prediction issue is tackled using classification solutions.
- Data is pre-processed in a way to improve the performance of the learning.
- 60% of the dataset are used to train the neural networks and the 40% left are used for testing.
- Deep Neural Network (DNN) is composed of three hidden layers.
- The Recurrent Neural Network (RNN) is formed by one Long Short Term Memory (LSTM) cell.

New Generation Core: The Architecture

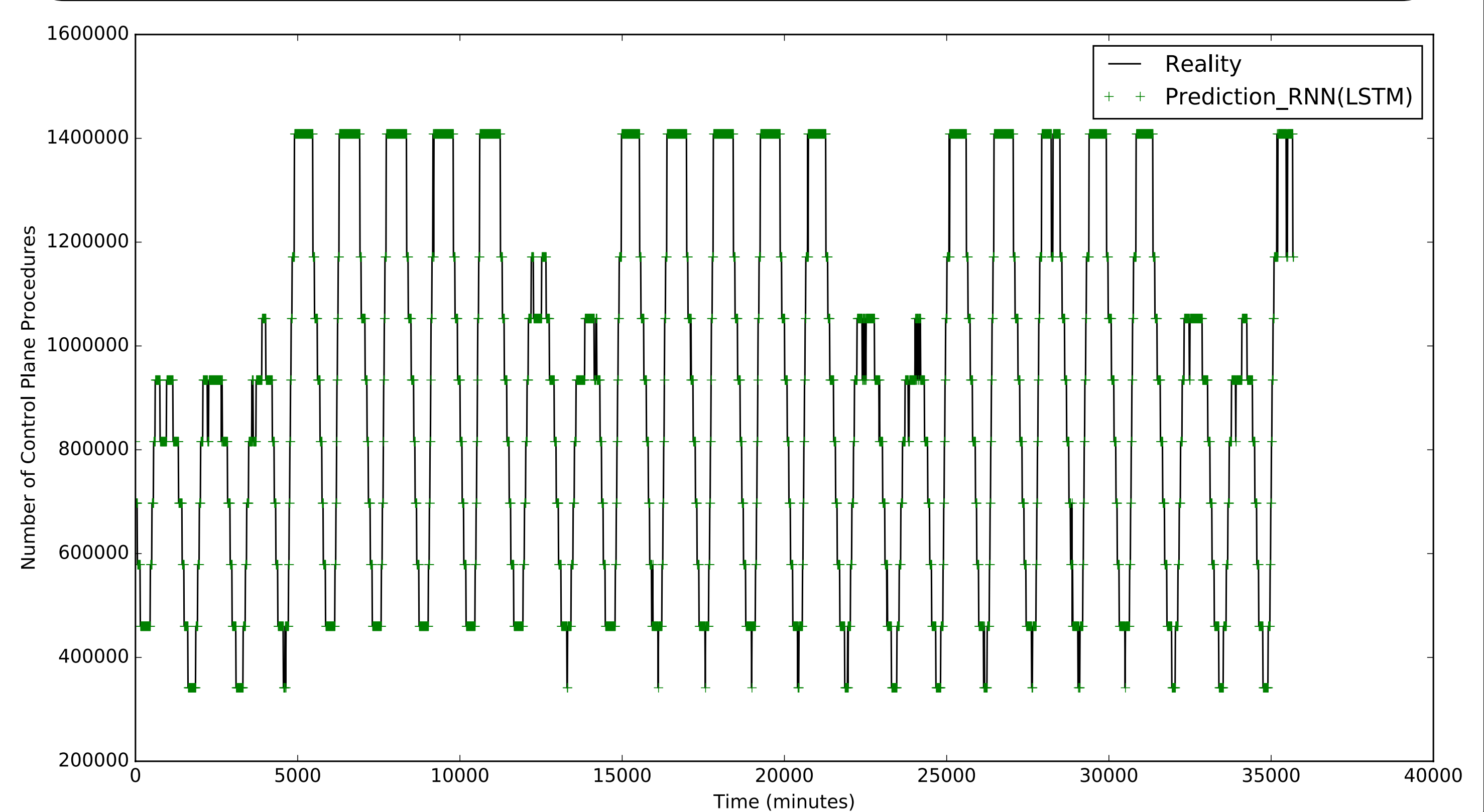


Main Results

Deep Neural Network (DNN) Prediction vs Reality Accuracy up to 79%



Recurrent Neural Network (RNN[LSTM]) Prediction vs Reality Accuracy up to 88%



Conclusions

- RNN (LSTM) performs better than DNN with such type of dataset.
- Prediction accuracy with RNN clearly shows the potential of applying such type of approaches in predicting complex data patterns.
- Future work will focus on testing and optimizing different types of RNN/NN for predicting the control plane procedures' load in future 5G networks.

References

- [1] NGMN 5G White Paper: “<https://www.ngmn.org/5g-white-paper.html>”
- [2] 3GPP, System Architecture for the 5G System: “http://www.3gpp.org/ftp/specs/archive/23_series/23.501/”
- [3] Alawe Imad; Ksentini Adlen; Hadjadj-Aoul Yassine; Bertin Philippe; Kerbellec Amelie: On Evaluating Different Trends for Virtualized and SDN-ready Mobile Network, CloudNet 2017 proceedings, p71 – p76
- [4] Mobile phone activity in a city : “<https://www.kaggle.com/marcodena/mobile-phone-activity>”