



**HAL**  
open science

## Krylov methods applied to reactive transport models

Jocelyne Erhel

► **To cite this version:**

Jocelyne Erhel. Krylov methods applied to reactive transport models. SIAM Conference on Mathematical and Computational Issues in the Geosciences, Sep 2017, Erlangen, Germany. hal-01646268

**HAL Id: hal-01646268**

**<https://inria.hal.science/hal-01646268>**

Submitted on 23 Nov 2017

**HAL** is a multi-disciplinary open access archive for the deposit and dissemination of scientific research documents, whether they are published or not. The documents may come from teaching and research institutions in France or abroad, or from public or private research centers.

L'archive ouverte pluridisciplinaire **HAL**, est destinée au dépôt et à la diffusion de documents scientifiques de niveau recherche, publiés ou non, émanant des établissements d'enseignement et de recherche français ou étrangers, des laboratoires publics ou privés.

# Krylov methods applied to reactive transport models

**Jocelyne Erhel**

Inria/IRMAR, RENNES

Joint work with C. de Dieuleveult, S. Sabit and Y. Crenner (Inria)  
F. Pacull, P.-M. Gibert and D. Tromeur-Dervout (university of Lyon)

**SIAM conference on Geosciences**

**Erlangen, September 2017**

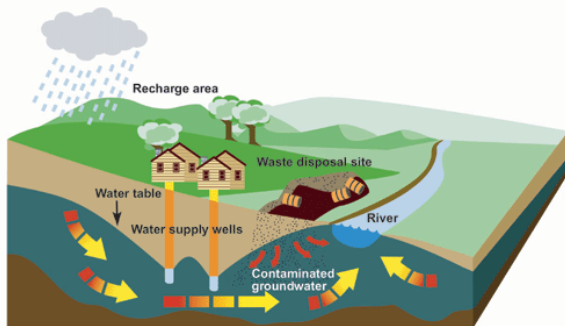
## 1 Reactive transport model

- 1 Reactive transport model
- 2 Numerical schemes

- 1 Reactive transport model
- 2 Numerical schemes
- 3 Numerical experiments

## Groundwater contamination

Groundwater contamination from a waste disposal site



- Manage groundwater resources
- Prevent pollution
- Store waste, store energy, capture  $CO_2$
- Use geothermal energy
- ...

## Reactive transport model

### Transport: Partial Differential Equations

- Single aqueous phase in porous medium
- Advection and dispersion
- Linear transport operator

### Chemistry: Algebraic Equations

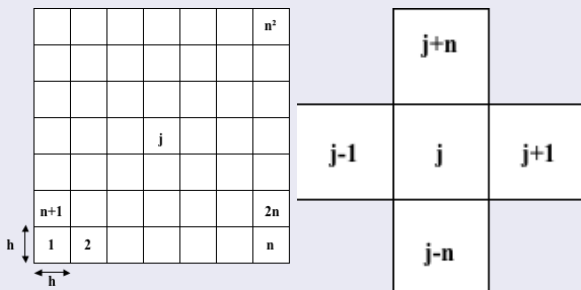
- Thermodynamical equilibrium
- Aqueous, fixed and mineral reactions
- $N_c$  mobile primary species and  $N_s$  fixed primary species
- Secondary species function of primary species
- Minerals at saturation

## Space discretization

### Discretization schemes

- Mesh of computational domain with  $N_m$  points (cells, nodes, ...)
- Eulerian discretization (Mixed Finite Element, Finite Volume, ...)
- Algebraic chemistry at each point

### 2D regular mesh





## Semi-discrete reactive transport model

## Mass conservation equations

$$\begin{cases} dy/dt + f(c) = q, \\ -y + g_c(c, s) = 0, \\ g_s(c, s) = 0, \\ y(t = 0) = y_0. \end{cases}$$

- $y$ : total analytical concentrations  $y \in R^{N_c \times N_m}$
- $c$ : mobile species  $c \in R^{N_c \times N_m}$  (ions, etc)
- $s$ : fixed species  $s \in R^{N_s \times N_m}$  (sorbed species, minerals, etc)
- $f(c)$ : discrete transport applied to mobile species
- $q$ : boundary conditions
- $y_0$ : initial conditions
- $g_c(c, s)$ : total mass of mobile species (involving secondary species)
- $g_s(c, s)$ : total mass of fixed species (involving secondary species) and saturation thresholds of minerals

## Time discretization and nonlinear solver

### Implicit Euler

$$\begin{cases} y + \Delta t f(c) - y^n = \Delta t q, \\ -y + g_c(c, s) = 0, \\ g_s(c, s) = 0. \end{cases}$$

### Nonlinear equations at each time step

$$\begin{cases} g_c(c, s) + \Delta t f(c) - y^n - \Delta t q = 0, \\ g_s(c, s) = 0. \end{cases}$$

### Nonlinear solver: Newton's method

- linearization of equations
- Newton-LU: direct linear solver (LU)
- Newton-GMRES: iterative Krylov solver (GMRES)

## Newton's method

Function  $F(c, s)$  at each point  $j$ ,  $1 \leq j \leq N_m$ 

$$\begin{cases} F_j(c, s) = \begin{pmatrix} g_{c,j}(c, s) + \Delta t f_j(c) - y_j^n - \Delta t q_j \\ g_{s,j}(c, s) \end{pmatrix}, \\ g_{c,j}(c, s) = \bar{g}_c(c_j, s_j), \\ g_{s,j}(c, s) = \bar{g}_s(c_j, s_j), \\ f(c) = (L \otimes I_{N_m}) \text{vec}(C(c)) \end{cases}$$

Jacobian matrix

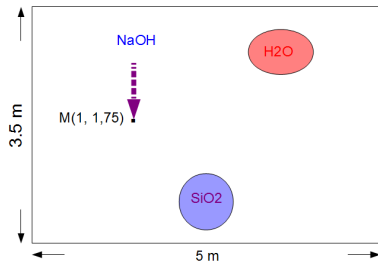
$$\begin{cases} J_F(c, s) = J_g(c, s) + \Delta t \begin{pmatrix} J_f(c) & 0 \\ 0 & 0 \end{pmatrix}, \\ J_g(c, s) = \mathbf{diag}(J_{\bar{g}}(c_j, s_j)), \\ J_f = (L \otimes I_{N_m}) \mathbf{diag}(dC_j(c)/dc_j) \end{cases}$$

Preconditioning  $M$ 

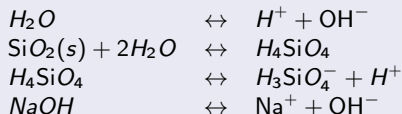
$$M = J_g(c, s)$$

## Numerical example: Andra qualification test

### Injection of alkaline water



### Chemistry



Mugler, G. and Bernard-Michel, G. and Faucher, G. and Miguez, R. and Gaombalet, J. and Loth, L. and Chavant, C., Projet ALLIANCES: plan de qualification, CEA, ANDRA, EDF

## Results of simulations: Andra test case



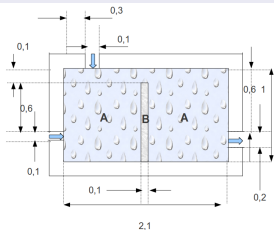
Computations done using GRT3D (Inria and ANDRA software)



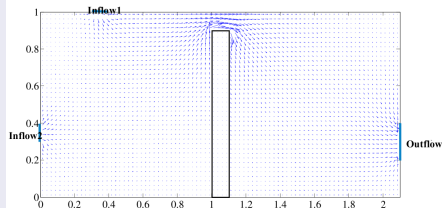
J. Erhel, S. Sabit and C. de Dieuleveult, Solving Partial Differential Algebraic Equations and Reactive Transport Models , Computational Science, Engineering and Technology Series, 2013

## Numerical experiment: MoMaS 2D easy test case

### Flow conditions

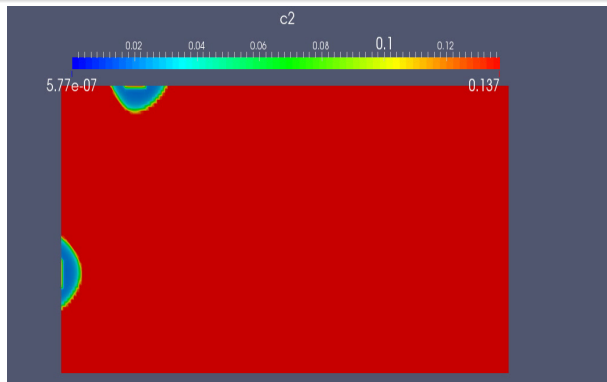


### Velocity



J. Carayrou, M. Kern and P. Knabner, Reactive transport benchmark of MoMaS, Computational Geosciences, 2010

## Results of simulations: MoMaS 2D easy test case



Computations done using GRT3D (Inria and ANDRA software) with a mesh of  $80 \times 168$  cells



J. Erhel and S. Sabit, Analysis of a global reactive transport model and results for the MoMaS benchmark, Mathematics and Computers in Simulation, 2017

## Comparison of Newton-LU and Newton-GMRES

## Newton-LU with UMFPACK and Newton-GMRES with PETSC

Test case	Mesh	Solver	CPU Time (minutes)
ANDRA	322 × 224	LU	94
		GMRES	8
MOMAS	40 × 84	LU	189
		GMRES	52
MOMAS	80 × 168	LU	3012
		GMRES	621



F. Pacull, P.-M. Gibert, S. Sabit, J. Erhel and D. Tromeur-Dervout, Parallel Preconditioners for 3D Global Reactive Transport, Parallel CFD, Norway, 2014



## Concluding remarks

### Efficiency of the software GRT3D

- global approach (implicit scheme and Newton's method)
- adaptive time step and modified Newton iterations (convergence monitoring)
- Newton-GMRES using the specific structure

## Concluding remarks

### Efficiency of the software GRT3D

- global approach (implicit scheme and Newton's method)
- adaptive time step and modified Newton iterations (convergence monitoring)
- Newton-GMRES using the specific structure

### Future work

- Adaptive mesh refinement
- Kinetic reactions

## Announcement



Computational Methods for Water Resources  
Saint-Malo, France, June 3-7, 2018  
Website: <http://cmwrconference.org/>