



**HAL**  
open science

## Using the Journalistic Metaphor to Design User Interfaces That Explain Sensor Data

Martin Molina, Enrique Parodi, Amanda Stent

► **To cite this version:**

Martin Molina, Enrique Parodi, Amanda Stent. Using the Journalistic Metaphor to Design User Interfaces That Explain Sensor Data. 13th International Conference on Human-Computer Interaction (INTERACT), Sep 2011, Lisbon, Portugal. pp.636-643, 10.1007/978-3-642-23765-2\_43 . hal-01591839

**HAL Id: hal-01591839**

**<https://inria.hal.science/hal-01591839>**

Submitted on 22 Sep 2017

**HAL** is a multi-disciplinary open access archive for the deposit and dissemination of scientific research documents, whether they are published or not. The documents may come from teaching and research institutions in France or abroad, or from public or private research centers.

L'archive ouverte pluridisciplinaire **HAL**, est destinée au dépôt et à la diffusion de documents scientifiques de niveau recherche, publiés ou non, émanant des établissements d'enseignement et de recherche français ou étrangers, des laboratoires publics ou privés.



Distributed under a Creative Commons Attribution 4.0 International License

# Using the Journalistic Metaphor to Design User Interfaces that Explain Sensor Data

Martin Molina<sup>1</sup>, Enrique Parodi<sup>1</sup>, Amanda Stent<sup>2</sup>

<sup>1</sup> Department of Artificial Intelligence  
Technical University of Madrid, Spain  
martin.molina@upm.es, enrique.parodi@fi.upm.es

<sup>2</sup> AT&T Labs - Research  
Florham Park, NJ, USA  
stent@research.att.com

**Abstract.** Facilitating general access to data from sensor networks (including traffic, hydrology and other domains) increases their utility. In this paper we argue that the journalistic metaphor can be effectively used to automatically generate multimedia presentations that help non-expert users analyze and understand sensor data. The journalistic layout and style are familiar to most users. Furthermore, the journalistic approach of ordering information from most general to most specific helps users obtain a high-level understanding while providing them the freedom to choose the depth of analysis to which they want to go. We describe the general characteristics and architectural requirements for an interactive intelligent user interface for exploring sensor data that uses the journalistic metaphor. We also describe our experience in developing this interface in real-world domains (e.g., hydrology).

**Keywords:** Intelligent user interface, multimedia presentation, interactive data exploration, user interface for web applications.

## 1 Introduction

Today, organizations are collecting large quantitative datasets from distributed sensors including GPS devices, RFID tags, and point of purchase devices. There exist advanced visualization systems to help domain experts analyze, interpret and understand data from sensor networks [5][11]. Non-expert users can also benefit from analyses of sensor network data. Web-based systems that automatically construct textual, spoken or multimedia explanations of the meaning of sensor data using non-technical language can facilitate access by non-expert users and consequently increase the utility of sensor network infrastructures.

An example of this situation in the hydrological domain is sensor network with real time data about water levels, water flows and other meteorological information. In contrast to a specialized system that only presents graphics and quantitative results of analyses to expert hydrologists, an interactive web application with additional text and multimedia *explanation* capabilities is potentially useful to a wide range of non-

expert users (e.g., municipalities, civil protection, engineering consultants, and educators). Other examples of large quantitative datasets potentially useful for different communities of users are environmental data from ship traffic [23], crime statistics [22], and wildlife tracking data [18].

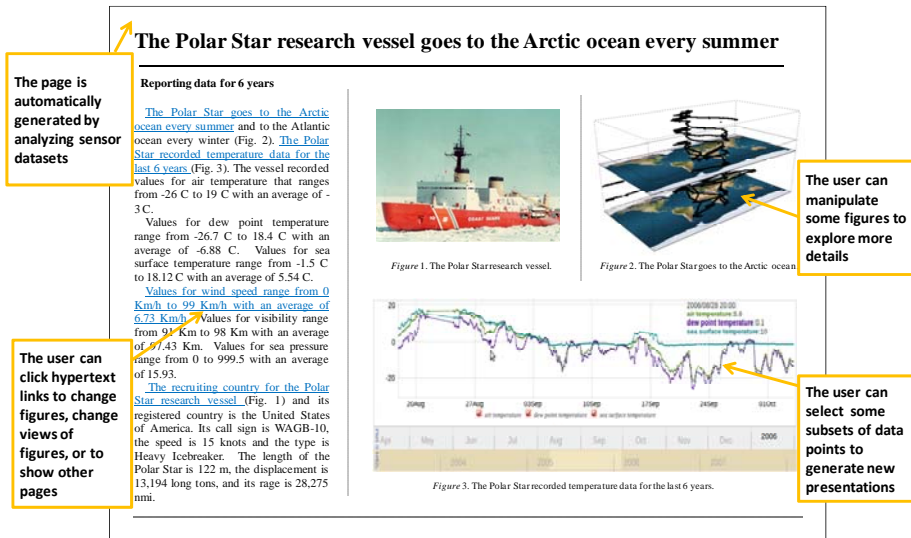
The addition of text explanations to visualizations of sensor data can facilitate better understanding and more effective use of the data. The automatic generation of presentations combining text and graphics is a well-known but complex problem [6][7][12]. In this paper we analyze two particular questions: (1) what presentation style (combining text and graphics) can be used to help non-expert users analyze sensor data, and (2) what techniques can be used to support the automatic generation of this type of presentation. Our answer to the first question is to use the journalistic metaphor, because the journalistic layout and presentation style are widely understood. Our answer to the second question is a general design that combines and adapts techniques from multimedia presentation systems and intelligent data analysis.

In the following sections, we first describe our concept of an user interface following the journalistic metaphor. Then, we describe the main components of a general architecture to support this type of interface. Finally, we describe applications that we developed to evaluate our approach, and a comparison with related work.

## 2 A user interface based on the journalistic metaphor

Journalists, who face the challenging task of presenting complex situations to non-experts in a way that quickly and effectively promotes understanding, have converged on practical guidelines for effective communication to wide audiences. We use these journalistic guidelines to design a user interface that explains sensor data to wide audiences. In general, the journalistic style uses non-technical language understandable by general users and follows guidelines such as the following:

- *Writing using the inverted pyramid.* A news story is usually structured to put essential information first, with supporting information following in order of diminishing importance. The *headline* captures the user's attention and quickly communicates the main idea of the story. Then, the *text body* develops the headline. The text body is structured to put essential information first, with supporting information following in order of diminishing importance. It is structured so that the user can stop at any point with a high-level understanding, or continue to read to get more detailed analysis.
- *Effective use of graphics to elaborate on the text.* A feature story is often accompanied by illustrations including 2D maps and timelines, bar charts, line charts, pie charts, and images. Figure captions summarize the content of the figure. Figure legends explain the meaning of certain symbols and act as quick references to subsets of the data identified during data analysis. The text body also explains the meaning of the data analyses displayed in the graphics.
- *Page layout to organize related information.* A newspaper organizes news stories into different sections, with the most important stories on the first page. Graphics and text may be presented in a one-column layout (with graphics located near the relevant text), or in multi-column layouts (with graphics running parallel to the text).



**Fig. 1.** Example presentation for interactive exploration of sensor datasets.

Figure 1 shows an example presentation in a user interface that we developed following the journalistic metaphor. This presentation is based on a large set of environmental information collected by ships over the last ten years as part of the international VOSclim project [23]. This data set includes tens of measures for each of hundreds of thousands of events for hundreds of ships. Our web-based, interactive interface works as a virtual newspaper that automatically generates multimedia news stories that highlight and explain analyses of sensor data.

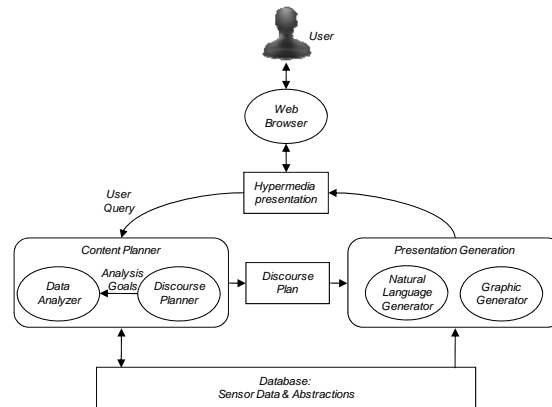
### 3 Automatic generation of presentations

To implement a user interface that explains sensor data using the journalistic metaphor, we need to simulate tasks that human journalists perform to construct presentations. These tasks are: analyze the data and find the important elements, create a plan to present the information to the reader, generate the text in natural language using general terminology, generate graphics that complement the text, and generate a logically consistent layout for the presentation. In order to automatically perform these tasks, we have designed a general architecture that combines and adapts solutions from the fields of multimedia presentation systems and intelligent data analysis. Figure 2 shows the main components of our architecture.

This architecture shares some general components of multimedia presentation systems [1] (e.g, content planning and presentation generation). Some original contributions of our design are: (1) *data analysis of large spatio-temporal datasets*, i.e. we automatically analyze large datasets with spatio-temporal information to find patterns and perform aggregations (e.g., spatial and temporal aggregations), (2) *explanatory multimedia descriptions*, i.e. we automatically construct complex

descriptions (with multi-paragraph natural language summaries and graphics) with informative and persuasive discourses that summarize and explain the sensor data (here, we follow the journalistic metaphor which provides a guide to structure the presentation), and (3) *interactive exploration*, i.e. our user interface supports a mixed-initiative approach to interactive data exploration.

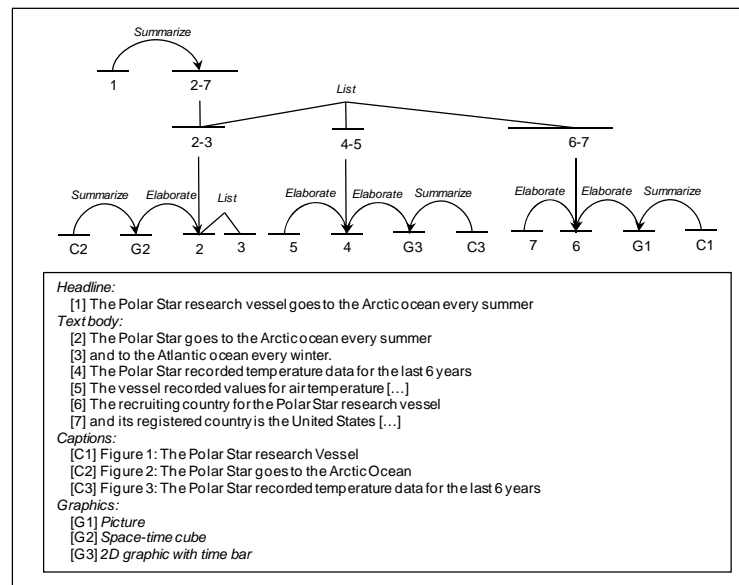
Our architecture includes a database that efficiently stores sensor data (thousands or millions of events) and the results of data analyses. The database represents raw sensor readings as *observed* events, each characterized by a set of attribute values. Our architecture also includes a component for data analysis to find abstractions over the input sensor data. The data analyzer uses general data mining algorithms to cluster, analyze trends, and describe the data in terms of the most common feature values, example instances, and exceptions. The automatic application of geospatial, temporal and domain-specific knowledge bases to the observed events produces *extended* and *aggregated* events, with new attribute values corresponding to abstractions of the observed attribute values.



**Fig. 2.** Main components of our architecture for automatic generation of news from sensor data.

In order to generate multimedia descriptions using the journalistic metaphor, our system must select from numerous potential ways of describing the input data. Therefore, it is not practically possible to use a few templates that help to generate these descriptions. Instead, we use a more flexible solution with a discourse planner in combination with natural language generation and graphics generation. Our discourse planner is conceived as a knowledge-based hierarchical planner. The knowledge base includes partial discourse patterns in the journalistic style, together with conditions for selecting each discourse pattern. The generated discourse plan includes information about the rhetorical structure of the discourse (with rhetorical relations [13]) and information about propositions in the discourse, represented as references to subsets of the input data (Figure 3). In our architecture the discourse planner operates in a loop with the data analyzer. The discourse planner invokes specific prefixed data analysis functions using the knowledge base of discourse patterns and the results of previous data analyses to progressively construct the discourse plan.

The component for *presentation generation* receives as input the discourse plan output by the discourse planner. The presentation generator generates interactive hypermedia presentations (in HTML and JavaScript) accessible by remote web browsers through the Internet. Our user interface supports a mixed-initiative approach to interactive data exploration. Some data analysis tasks are chosen and performed automatically by the system, and presented to the user as an inter-connected collection of multimedia stories through which the user can browse. The user can invoke other tasks herself by clicking on hyperlinks in a story or selecting subsets of the data via manipulation of a graphic.



**Fig. 3.** Discourse structure of the presentation (simplified example).

The generation process involves picking elements off of the discourse plan and invoking text or graphics generation components accordingly. The *text generator* produces natural language text using two components, sentence planning and surface realization [20]. The figures that accompany texts are constructed on the fly by *the graphics generator*. The graphics generator can make use of several publicly available graphics tools, such as Google Charts, Dygraphs, SIMILE Widgets, and OpenStreetMaps.

## 4 Applications and related work

We developed a real-world application in the domain of hydrology following the user interface design described in this paper, using sensor data from a national information system (SAIH: Spanish acronym for Automatic Information System in Hydrology) in Spain. The application generates 20-30 pages of news every hour summarizing 44,736

sensor readings across Spain. For example, Figure 4 shows one of the generated pages with a headline (light rain at a few places in the Guadiana basin), text body (with hyperlinks), and two graphics: an animated illustration (the movement of a storm), and an interactive map. We evaluated the practical utility by comparing our application with existing web applications that present hydrological sensor data. The results of this evaluation showed that, with this system, users take up to 4.45 hours less to confirm the information in a summary of the hydrological data than they do given other existing systems for this data (with an average value of 3:45 hours for typical emergency scenarios).



Fig. 4. Example presentation in hydrology.

The application in the hydrologic domain followed the journalistic style described in this paper. It also included a preliminary version of our architecture with domain specific knowledge bases and abstraction methods (more details about this application domain can be found at [16]). We have also applied our design partially to other domains: ship data from the VOSclim project [23], Twitter data with measures of sentiment [4], general geographical movements [17], and aircraft data [15]. As a result of these applications, we generalized some components of our design as they are described in this paper. We are currently working on a complete implementation of this design using different domains for evaluation with spatio-temporal data from sensors.

Our solution is related to multimedia presentation systems such as WIP [2], COMET [14], Autobrief [9], and Dart<sub>bio</sub> [3]. Compared to these systems, our system is original in the following aspects: (1) it is designed for a different problem (generation of descriptions about the meaning of sensor data), (2) it follows the

journalistic style and constructs complex multi-page presentations, (3) it includes complex and interactive graphics (animations, maps, etc.), and (4) it has been evaluated in real-world domains (e.g., hydrology).

Our system also shares architectural elements with other data-to-text generation systems (for weather forecasting [21], or medicine [10]). However, we use a different data analysis approach, directed by the discourse planning process; and we produce multimedia presentations. Our system can also be related partially to user interface generation using high level models [8]. Compared to this, our solution also uses high level models (discourse plans with rhetorical relations) to generate output presentations.

Our proposal is also related to the field of computational journalism. In this field, our solution can be compared to research work related to automatic generation of news (e.g., [19]). In this type of solution, news is generated using text-to-text summarization techniques and web mining. In contrast, our system creates news stories from quantitative measures of sensor data, and automatically generates coordinated presentations of text and interactive graphics.

## 5 Conclusions

In this paper we have described an intelligent user interface, conceived as an automatically generated virtual newspaper, for interactive exploration of sensor datasets that combine text summaries and graphics. We have adopted the journalistic metaphor to make the results of data analyses easily understandable by non-expert users. This metaphor provides general criteria to automatically construct presentations (with headlines, types of discourse patterns, illustrations and specific page layouts). To support this type of interface, we have identified the main components of a general architecture combining and refining solutions from multimedia presentation systems and intelligent data analysis. We have applied this solution to real-world domains and shown its practical utility. This type of user interface is an effective solution to improve the utility of sensor networks.

The implementation of our architecture uses general-purpose reusable components. However, it also requires the development of certain domain-specific components, more specifically, domain-specific discourse patterns, knowledge bases and data analysis methods. Our future work includes the generalization of these domain-specific elements to facilitate reuse, as well as evaluation in different domains.

**Acknowledgements.** The research leading to these results has received funding from the European Union Seventh Framework Programme (FP7/2007-2013) under grant agreement PEOF-GA-2009-253331 (Project INTERACTIVEX). This work was also partially supported by the Ministry of Science and Innovation of Spain within the VIOMATICA project (TIN2008-05837).



## References

1. André, E.: The generation of multimedia presentations. In: Dale, R., Moisl H., Somers, H. (eds.) *A Handbook of Natural Language Processing: Techniques and Applications for the Processing of Language as Text*, pp. 305–327, Marcel Dekker Inc., New York (2000)
2. André, E., Rist, T.: The design of illustrated documents as a planning task. In: Maybury, M. (ed.) *Intelligent Multimedia Interfaces*, AAAI Press, pp. 94–116 (1993)
3. Bateman, J., Kleinz, J., Kamps, T., Reichenberger, K.: *Towards Constructive Text, Diagram, and Layout Generation for Information Presentation*. *Computational Linguistics*, Volume 27, Number 3, (2001)
4. Barbosa L., Feng, J.: Robust sentiment detection on Twitter from biased and noisy data. In: 23rd International Conference on Computational Linguistics, COLING, (2010)
5. Card, S.K., Mackinlay, J.D., Shneiderman, B. (eds.): *Readings in Information Visualization – Using Vision to Think*. Morgan Kaufmann, San Francisco, CA (1999)
6. Carenini, G., Moore, J.: A strategy for generating evaluative arguments. In: *First Int'l Conf. on Natural Language Generation* (2000)
7. Demberg, V., Moore, J.: Information presentation in spoken dialogue systems. In: 11th Conf. European Chapter of the Association for Computational Linguistics (2006)
8. Falb, J., Kavaldjian, S., Popp, R., Raneburger, D., Arnautovic, E., Kaindl, H.: Fully automatic user interface generation from discourse models. In: 14th International Conference on Intelligent User Interfaces (2009)
9. Green, N., Carenini, G., Kerpedjiev, S., Mattis, J., Moore, J., Roth, S.: AutoBrief: an Experimental System for the Automatic Generation of Briefings in Integrated Text and Information Graphics. *International Journal of Human-Computer Studies* Vol. 61, Issue 1, pp. 32-70 (2004)
10. Hunter, J., Gatt, A., Portet, F., Reiter, E., Sripada, S.: Using natural language generation technology to improve information flows in intensive care units. In: 5th Conf. on Prestigious Applications of Intelligent Systems (2008)
11. Keim, D.A.: Information visualization and visual data mining. *IEEE Trans. on Visualization & Computer Graphics*, vol. 8, no. 1, pp. 1-8 (2002)
12. Kopp, S., Tepper, P., Cassell, J.: Towards integrated microplanning of language and iconic gesture for multimodal output. In: 6th Int. Conference on Multimodal Interfaces (2004)
13. Mann, W., Thompson, S.: *Rhetorical Structure Theory: Toward a functional theory of text organization*. *Text*, vol. 8, no. 3, pp. 243-281 (1988)
14. McKeown K.R., Feiner, S.K.: Interactive multimedia explanation for equipment maintenance and repair. In: *DARPA Speech and Language Workshop* (1990)
15. Molina, M., Parodi, E., Stent, A.: Combining text and graphics for interactive exploration of behaviour datasets. In: 22nd Int. Conference on Tools with Artificial Intelligence (2010)
16. Molina, M., Flores, V.: A presentation model for multimedia summaries of behavior. In: 13th International Conference on Intelligent User Interfaces (2008)
17. Molina, M., Stent, A.: A knowledge-based method for generating summaries of spatial movement in geographic areas. *International Journal on Artificial Intelligence Tools*, Vol 19, N. 4, pp. 393-415 (2010)
18. Obis-Seamap, <http://seamap.env.duke.edu/>
19. Radev, D.R., Otterbacher, J., Winkel, A., Blair-Goldensohn, S.: NewsInEssence: Summarizing online news topics. *Communications of the ACM*, 48(10):95–98 (2005)
20. Reiter E., Dale, R.: *Building Natural Language Generation Systems*. Cambridge University Press, Cambridge, UK (2000)
21. Reiter, E., Sripada, S., Hunter, J., Yu, J., Davy, I.: Choosing words in computer-generated weather forecasts. *Artificial Intelligence*, vol. 67, no. 1-2, pp. 137-169 (2005)
22. UCR, Uniform Crime Reports, <http://www.fbi.gov/ucr/ucr.htm>
23. VOSclim, <http://www.ncdc.noaa.gov/oa/climate/vosclim/vosclim.html>