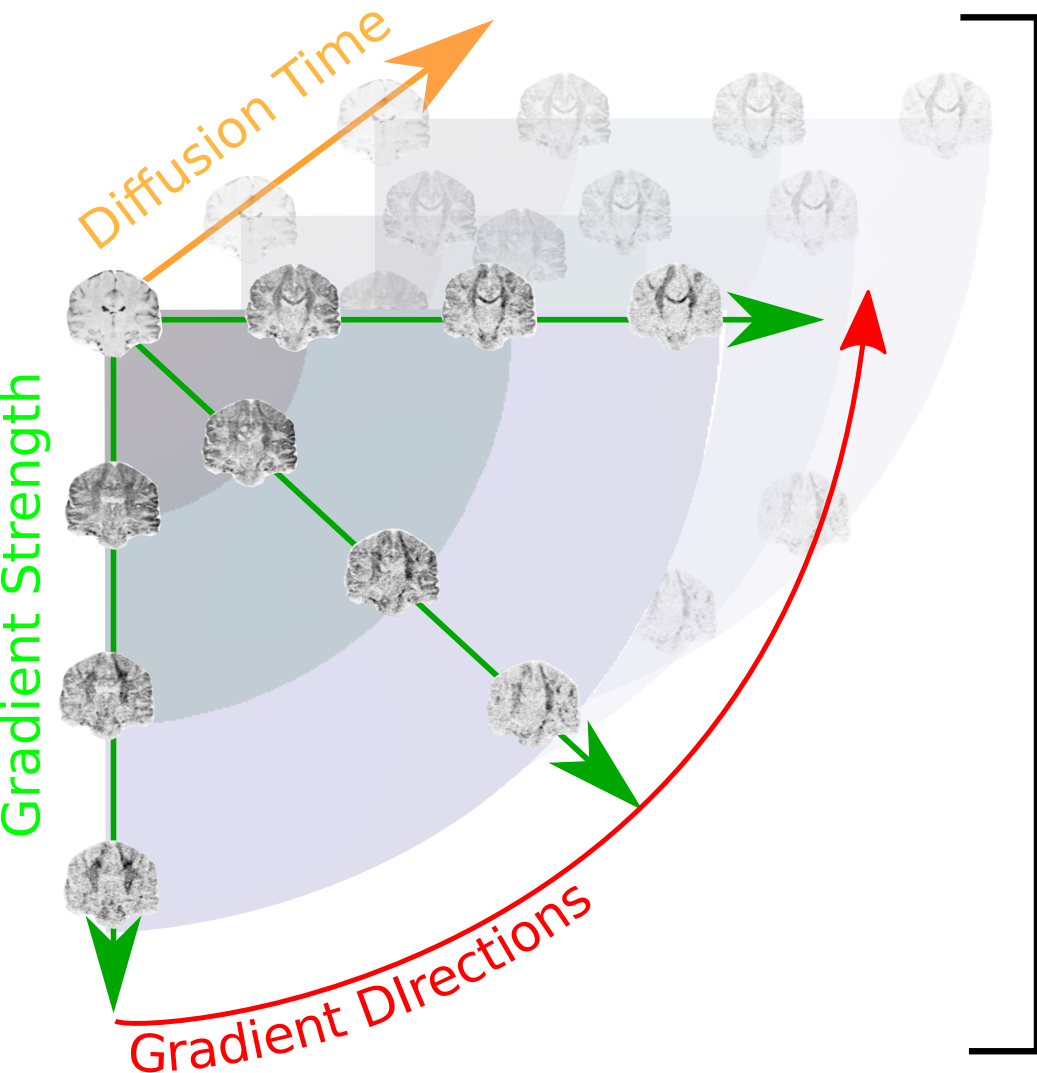
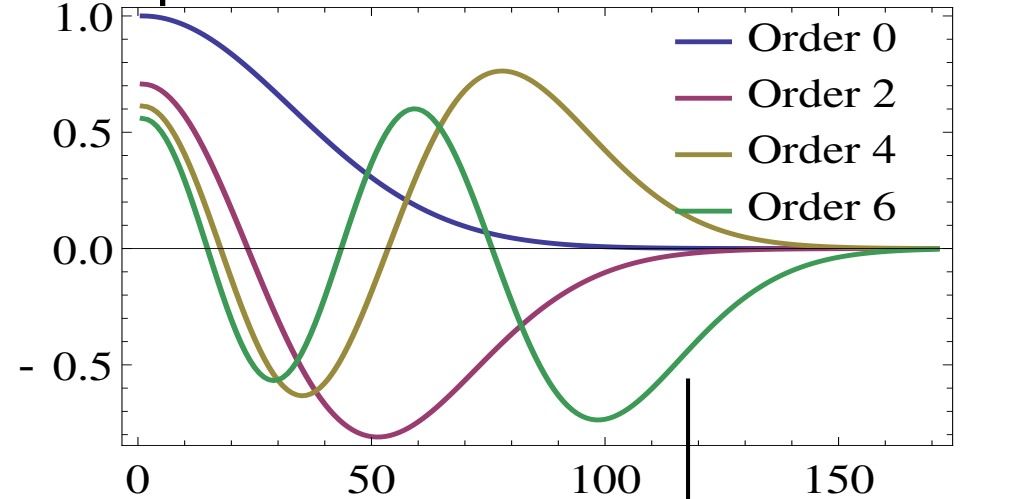


q τ -dMRI Acquisition



q τ -dMRI Representation

Complete Fourier Functional Basis



$$\hat{E}(\mathbf{q}, \tau; \mathbf{c}) = \sum \mathbf{c}_i \Phi_i(\mathbf{q}) T_i(\tau)$$

$$\hat{P}(\mathbf{R}, \tau; \mathbf{c}) = \sum \mathbf{c}_i \Psi_i(\mathbf{R}) T_i(\tau)$$

q τ -index Estimation

Time-Dependent q-space indices

MSD(τ) RTOP(τ) RTAP(τ) RTPP(τ)

in-vivo Test-Retest Reproducibility

