



HAL
open science

Interval Observers for SIR Epidemic Models Subject to Uncertain Seasonality

Pierre-Alexandre Bliman, Bettina D 'Avila Barros

► **To cite this version:**

Pierre-Alexandre Bliman, Bettina D 'Avila Barros. Interval Observers for SIR Epidemic Models Subject to Uncertain Seasonality. Lecture Notes in Control and Information Sciences, 471, pp.9, 2017, 10.1007/978-3-319-54211-9_3. hal-01567474

HAL Id: hal-01567474

<https://inria.hal.science/hal-01567474v1>

Submitted on 24 Jul 2017

HAL is a multi-disciplinary open access archive for the deposit and dissemination of scientific research documents, whether they are published or not. The documents may come from teaching and research institutions in France or abroad, or from public or private research centers.

L'archive ouverte pluridisciplinaire **HAL**, est destinée au dépôt et à la diffusion de documents scientifiques de niveau recherche, publiés ou non, émanant des établissements d'enseignement et de recherche français ou étrangers, des laboratoires publics ou privés.

Interval observers for SIR epidemic models subject to uncertain seasonality

Pierre-Alexandre Bliman and Bettina D'Avila Barros

Abstract Epidemic models describe the establishment and spread of infectious diseases. Among them, the SIR model is one of the simplest, involving exchanges between three compartments in the population, that represent respectively the number of susceptible, infective and recovered individuals. The issue of state estimation is considered here for such a model, subject to seasonal variations and uncertainties in the transmission rate. Assuming continuous measurement of the number of new infectives per unit time, a class of interval observers with estimate-dependent gain is constructed and analyzed, providing lower and upper bounds for each state variable at each moment in time. The dynamical systems that describe the evolution of the errors are monotonous. Asymptotic stability is ensured by appropriate choice of the gain components as a function of the state estimate, through the use of a common linear Lyapunov function. Numerical experiments are presented to illustrate the method.

1 Introduction, presentation of the SIR model

The SIR model with vital dynamics, see e.g. [4, 11], is one of the most elementary compartmental models of epidemics. It describes the evolution of the relative proportions of three classes of a population of constant size, namely the susceptibles S , capable of contracting the disease and becoming infective; the infectives I , capable of transmitting the disease to susceptibles; and the recovered R , permanently

Pierre-Alexandre Bliman

Escola de Matemática Aplicada, Fundação Getulio Vargas, Rio de Janeiro - RJ, Brazil and Sorbonne Universités, Inria, UPMC Univ Paris 06, Lab. J.L. Lions UMR CNRS 7598, Paris, France
e-mail: pierre-alexandre.bliman@inria.fr

Bettina D'Avila Barros

Escola de Matemática Aplicada, Fundação Getulio Vargas, Rio de Janeiro - RJ, Brazil
e-mail: barrosbettina@gmail.com

immune after healing. This model is as follows:

$$\dot{S} = \mu - \mu S - \beta SI \quad (1a)$$

$$\dot{I} = \beta SI - (\mu + \gamma)I \quad (1b)$$

The natural birth and mortality rate is μ (the disease is supposed not to induce supplementary death rate), γ is the recovery rate, while β represents the transmission rate per infective. All these parameters are positive. We consider here *proportions* of the population, and more precisely that $S + I + R \equiv 1$. Notice that the dynamics of R (given by $\dot{R} = \gamma I - \mu R$, that guarantees that $\dot{S} + \dot{I} + \dot{R} \equiv 0$) may be omitted, as the total population size is constant.

When the parameters are constant, the evolution of the solutions of system (1) depends closely upon the ratio $\mathcal{R}_0 := \frac{\beta}{\mu + \gamma}$ [4, 11]. The disease-free equilibrium ($S = 1$, $I = R = 0$) always exists. When $\mathcal{R}_0 < 1$, it is the only equilibrium and it is globally asymptotically stable. It becomes unstable when $\mathcal{R}_0 > 1$, and an asymptotically stable endemic equilibrium then appears.

On the contrary, when the parameters are time-varying, complicated dynamics may occur [12]. We are interested here in estimating the value of the three populations, a first step paving the way for epidemic outbreak forecasting. We use techniques of interval observers, including output injection, in the spirit e.g. of [8, 14, 7]. The dynamics of the obtained error equation is seen as a linear uncertain time-varying positive system, whose asymptotic stability is ensured through the search of a common *linear* Lyapunov function and adequate choice of the gain as function of the state estimate.

The hypotheses on the model and some qualitative results are presented in Section 2. The considered class of observers is given in Section 3, with some a priori estimates and technical results. The main result is provided in Section 4, where the asymptotic error corresponding to certain gain choice is quantified. Last, illustrative numerical experiments are shown in Section 5.

2 Hypotheses on the model and preliminaries

We consider in the sequel that the transmission rate is subject to uncertain seasonal variations. It is known that relatively modest variations of this type have the capacity to induce large amplitude fluctuations in the observed disease incidence. This seems due to harmonic resonance, the seasonal forcing exciting frequencies close to the natural near-equilibrium oscillatory frequency [6].

One assumes that the transmission rate β is bounded by two functions β_{\pm} , available in real-time (all functions are supposed locally integrable):

$$\beta_-(t) \leq \beta(t) \leq \beta_+(t) \quad \text{for a.e. } t \geq 0 \quad (2)$$

(typically with $0 < \liminf_{t \rightarrow +\infty} \beta_-(t) \leq \limsup_{t \rightarrow +\infty} \beta_+(t) < +\infty$).

Our goal is to estimate lower and upper bounds for the three subpopulations. The unique available measurement is supposed to be the incidence rate $y = \beta SI$, i.e. the number of new infectives per time unit (accessible through epidemiological surveillance). With representation (1), y is not a state component, contrary e.g. to [3, 5]. One sees easily that with this output, the system is detectable, but *not* observable at the disease-free equilibrium (where $I = 0$).

The following result provides qualitative estimates of its solutions.

Lemma 1. *Assume $S(0) \geq 0$, $I(0) \geq 0$ and $S(0) + I(0) \leq 1$. Then the same properties hold for any $t \geq 0$. The same is true with strict inequalities.*

Proof. Integrating (1a), (1b) yields

$$I(t) = I(0)e^{\int_0^t (\beta(\tau)S(\tau) - (\mu + \gamma)) .d\tau}$$

$$S(t) = S(0)e^{-\int_0^t (\mu + \beta(\tau)I(\tau)) .d\tau} + \mu \int_0^t e^{-\int_\tau^t (\mu + \beta I)} .d\tau$$

which show that $S(t), I(t) \geq 0$ for any $t \geq 0$; while integrating the differential inequality $\dot{S} + \dot{I} \leq \mu(1 - S - I)$ shows that $1 - (S(t) + I(t)) \geq 0$ for any $t \geq 0$. The same formulas provide the demonstration in the strict inequality case. \square

3 A class of nonlinear observer models

As preparation for the upcoming study, we explore now the following class of observers for system (1):

$$\dot{\hat{S}} = \mu - \mu\hat{S} - y + k_S(t)(y - \beta_S\hat{S}\hat{I}) \quad (3a)$$

$$\dot{\hat{I}} = y - (\mu + \gamma)h\hat{I} + k_I(t)(y - \beta_I\hat{S}\hat{I}) \quad (3b)$$

where the time-varying gain components $k_S(t), k_I(t)$ are yet to be defined.

Lemma 2. *Suppose that for some $\varepsilon > 0$,*

$$k_S(t) \geq 1 \text{ whenever } \hat{S}(t) \leq \varepsilon, \quad k_I(t) \geq -1 \text{ whenever } \hat{I}(t) \leq \varepsilon. \quad (4)$$

Assume $\hat{S}(0) \geq 0$, resp. $\hat{I}(0) \geq 0$. Then, for any $t \geq 0$, $\hat{S}(t) \geq 0$, resp. $\hat{I}(t) \geq 0$.

Proof. Verify directly that, under assumption (4), $\dot{\hat{S}} \geq 0$, resp. $\dot{\hat{I}} \geq 0$, in the neighborhood of a point where $\hat{S} = 0$, resp. $\hat{I} = 0$. This proves the result. \square

Last, the following technical result will be needed.

Lemma 3. *Define $e_S := S - \hat{S}$, $e_I := I - \hat{I}$. Then,*

$$\begin{pmatrix} \dot{e}_S \\ -\dot{e}_I \end{pmatrix} = \begin{pmatrix} -(\mu + k_S\beta_S h\hat{I}) & k_S\beta_S S \\ k_I\beta_I h\hat{I} & -(\mu + \gamma + k_I\beta_I S) \end{pmatrix} \begin{pmatrix} e_S \\ -e_I \end{pmatrix} + SI \begin{pmatrix} k_S(\beta_S - \beta) \\ k_I(\beta - \beta_I) \end{pmatrix} \quad (5)$$

Proof. One has $\dot{e}_S = -\mu e_S + k_S(\beta_S \hat{S} \hat{I} - y)$ and $\dot{e}_I = -(\mu + \gamma)e_I + k_I(\beta_I \hat{S} \hat{I} - y)$. On the other hand, $\beta_S \hat{S} \hat{I} - y = (\beta_S - \beta)SI + \beta_S S(\hat{I} - I) + \beta_S \hat{I}(\hat{S} - S) = -SI(\beta - \beta_S) - \beta_S S e_I - \beta_S \hat{I} e_S$, and similarly for $\beta_I \hat{S} \hat{I} - y$. One deduces

$$\begin{pmatrix} \dot{e}_S \\ \dot{e}_I \end{pmatrix} = - \begin{pmatrix} \mu + k_S \beta_S \hat{I} & k_S \beta_S S \\ k_I \beta_I \hat{I} & k_I \beta_I S + \mu + \gamma \end{pmatrix} \begin{pmatrix} e_S \\ e_I \end{pmatrix} - SI \begin{pmatrix} k_S(\beta - \beta_S) \\ k_I(\beta - \beta_I) \end{pmatrix} \quad (6)$$

and finally (5) when using $-e_I$ instead of e_I . \square

Observe that system (6) appears monotone for *nonpositive* gains, which is detrimental to its stability. This is not the case with system (5), which is used in the sequel to construct interval observers.

4 Error estimates for interval observers

Notice first that system (1) is not evidently, or transformable into, a monotone system. The instances of (3) presented in the next result provide a class of interval observers with guaranteed speed of convergence.

Theorem 1. *Consider the two independent systems*

$$\dot{S}_+ = \mu - \mu S_+ - y + k_{S_+}(t)(y - \beta_-(t)S_+I_-) \quad (7a)$$

$$\dot{I}_- = y - (\mu + \gamma)I_- + k_{I_-}(t)(y - \beta_+(t)S_+I_-) \quad (7b)$$

$$\dot{S}_- = \mu - \mu S_- - y + k_{S_-}(t)(y - \beta_+(t)S_-I_+) \quad (8a)$$

$$\dot{I}_+ = y - (\mu + \gamma)I_+ + k_{I_+}(t)(y - \beta_-(t)S_-I_+) \quad (8b)$$

i. Assume that the gains are nonnegative functions of S_{\pm}, I_{\pm} , that fulfill (4) for some $\varepsilon > 0$. If $0 \leq S_-(t) \leq S(t) \leq S_+(t)$ and $0 \leq I_-(t) \leq I(t) \leq I_+(t)$ for $t = 0$, then the same holds for any $t \geq 0$.

ii. If in addition the gain components $k_{S_{\pm}}(t), k_{I_{\mp}}(t)$ are chosen such that

$$\beta_-(t)k_{S_+}(t) - \rho_+\beta_+(t)k_{I_-}(t) = \frac{\rho_+\gamma}{\rho_+I_-(t) + S_+(t)} \quad (9a)$$

$$\beta_+(t)k_{S_-}(t) - \rho_-\beta_-(t)k_{I_+}(t) = \frac{\rho_-\gamma}{\rho_-I_+(t) + S_+(t)} \quad (9b)$$

*for fixed $\rho_{\pm} > 0$, then, writing $V_+(t) := (S_+(t) - S(t)) + \rho_+(I(t) - I_-(t))$, $V_-(t) := (S(t) - S_-(t)) + \rho_-(I_+(t) - I(t))$, the state functions V_{\pm} are positive definite when the trajectories are initialized according to point *i.*, and¹*

¹ In accordance with the usual convention, in the following formula the signs \pm, \mp should be interpreted either everywhere with the upper symbols, or everywhere with the lower ones.

$$\forall t \geq 0, V_{\pm}(t) \leq \int_0^t e^{-\int_{\tau}^t \delta_{\pm}} \max\{k_{S_{\pm}}(\tau), \rho_{\pm} k_{I_{\mp}}(\tau)\} S(\tau) I(\tau) (\beta_+(\tau) - \beta_-(\tau)) d\tau \\ + e^{-\int_0^t \delta_{\pm}(\tau) \cdot d\tau} V_{\pm}(0), \quad \text{with } \delta_{\pm}(t) := \mu + \gamma \frac{\rho_{\pm} I_{\mp}(t)}{\rho_{\pm} I_{\mp}(t) + S_+(t)} \quad (10)$$

The proposed observers guarantee that the errors converge exponentially, with speeds $\delta_{\pm}(t)$ that smoothly vary from μ (in absence of infectives: $I_{\pm}(t) = 0$) to at most $\mu + \gamma$ (in case of outbreak, if $\rho_{\pm} I_{\mp}(t) \gg S_+(t)$). Recall that a *positive* linear time-invariant system is asymptotically stable *iff* it admits a *linear* Lyapunov function of the type V_{\pm} [1, 10, 13]. With this in mind, it may indeed be deduced from the proof (see in particular (11)) that the convergence speed of observer of type (7)-(8) is bound to be *at most equal to* $\mu + \gamma$ in presence of epidemics, and *cannot be larger than* μ in absence of infectives². Recall that μ is the inverse of the mean life duration, while γ is the inverse of the mean recovery time: typically $\mu \ll \gamma$. Therefore, the observer takes advantage of epidemic bursts to reduce faster the estimation error. Notice that these convergence speeds do not depend upon the values of β_{\pm} .

The trade-off between stability and precision is clear from formula (10): an intrinsic limitation is evident from the fact that the integral therein is at least equal to $\int_0^t e^{-(\mu+\gamma)(t-\tau)} \max\{k_{S_{\pm}}(\tau), \rho_{\pm} k_{I_{\mp}}(\tau)\} S(\tau) I(\tau) (\beta_+(\tau) - \beta_-(\tau)) d\tau$ which is guaranteed to vanish only when both gains are zero. On the other hand, for zero gains, the error equation for the susceptibles is $\dot{e}_{S_{\pm}} + \mu e_{S_{\pm}} = 0$ which converges slowly to zero.

Last, observe that, with the estimate-dependent choice of the gain defined in (9), the error equations may be non monotone. However they fulfill the positivity and stability properties mentioned in the statement.

Proof of Theorem 1. We show the results for system (7) only, system (8) is treated similarly.

• Introduce the error terms $e_{S_+} := S_+ - \hat{S}$ and $e_{I_-} := I_- - \hat{I}$. Applying Lemma 3 to system (7) with $\hat{S} = S_+, \hat{I} = I_-, k_S = k_{S_+}, \beta_S = \beta_-, k_I = k_{I_-}, \beta_I = \beta_+$ (and therefore $e_S = -e_{S_+}, e_I = e_{I_-}$) yields

$$\begin{pmatrix} \dot{e}_{S_+} \\ \dot{e}_{I_-} \end{pmatrix} = - \begin{pmatrix} \dot{e}_S \\ -\dot{e}_I \end{pmatrix} \\ = - \begin{pmatrix} -(\mu + k_{S_+} \beta_- I_-) & k_{S_+} \beta_- S \\ k_{I_-} \beta_+ I_- & -(\mu + \gamma + k_{I_-} \beta_+ S) \end{pmatrix} \begin{pmatrix} e_S \\ -e_I \end{pmatrix} - SI \begin{pmatrix} k_{S_+} (\beta_- - \beta) \\ k_{I_-} (\beta_+ - \beta) \end{pmatrix} \\ = \begin{pmatrix} -(\mu + k_{S_+} \beta_- I_-) & k_{S_+} \beta_- S \\ k_{I_-} \beta_+ I_- & -(\mu + \gamma + k_{I_-} \beta_+ S) \end{pmatrix} \begin{pmatrix} e_{S_+} \\ e_{I_-} \end{pmatrix} + SI \begin{pmatrix} k_{S_+} (\beta - \beta_-) \\ k_{I_-} (\beta_+ - \beta) \end{pmatrix}.$$

The previous system may thus be written $\dot{X} = f(t, X)$, for $X := (e_{S_+} \ e_{I_-})^T$ and where the dependence with respect to time comes indirectly through the presence

² We constrain the closed-loop system to be monotone, so not any closed-loop spectrum can be realized.

of the other time-varying term. The off-diagonal terms of the Jacobian matrix are respectively $k_{S_+}(t)\beta_-(t)S_+(t)$ and $k_{I_-(t)}\beta_+(t)I_-(t)$, clearly nonnegative for a.e. $t \geq 0$ due to the hypotheses on the gain components (see Lemma 2). The corresponding system is therefore monotone [9, 15], and any solution of (7) departing with $e_{S_+}(0), e_{I_-}(0) \geq 0$ verifies $e_{S_+}(t), e_{I_-}(t) \geq 0$ for any $t \geq 0$. This proves *i*.

• Writing $X := (e_{S_+} \ e_{I_-})^\top$, notice that $V_+(X) := u^\top X$, for $u := (1 \ \rho_+)$, and V_+ and $\rho_+ > 0$ as in the statement. When X is initialized with nonnegative values, then this property is conserved (see point *i*), so V_+ is positive definite and may be considered as a candidate Lyapunov function.

Along the trajectories of (7), one has, using δ_+ defined in (10),

$$\begin{aligned} & \dot{V}_+(X) + \delta_+ V_+(X) \\ &= u^\top (\dot{X} + \delta_+ X) \\ &= u^\top \left(\begin{array}{cc} \delta_+ - (\mu + k_{S_+}\beta_- I_-) & k_{S_+}\beta_- S \\ k_{I_-}\beta_+ I_- & \delta_+ - (\mu + \gamma + k_{I_-}\beta_+ S) \end{array} \right) X + S I u^\top \begin{pmatrix} k_{S_+}(\beta_- - \beta_+) \\ k_{I_-}(\beta_+ - \beta_-) \end{pmatrix} \\ &= (\delta_+ - \mu + (\rho_+ k_{I_-}\beta_+ - k_{S_+}\beta_-) I_- \quad \rho_+(\delta_+ - \mu - \gamma) - (\rho_+ k_{I_-}\beta_+ - k_{S_+}\beta_-) S) X \\ & \quad + S I (k_{S_+}(\beta_- - \beta_+) + \rho_+ k_{I_-}(\beta_+ - \beta_-)). \end{aligned} \quad (11)$$

Choosing the gain as in (9a) gives

$$\delta_+ - \mu + (\rho_+ k_{I_-}\beta_+ - k_{S_+}\beta_-) I_- = \frac{\gamma I_-}{I_- + \frac{S_+}{\rho_+}} - \frac{\gamma I_-}{I_- + \frac{S_+}{\rho_+}} = 0$$

and

$$\rho_+(\delta_+ - \mu - \gamma) - (\rho_+ k_{I_-}\beta_+ - k_{S_+}\beta_-) S = -\frac{\gamma S_+}{I_- + \frac{S_+}{\rho_+}} + \frac{\gamma S}{I_- + \frac{S_+}{\rho_+}} \leq 0.$$

Formula (11) then yields $\dot{V}_+(X) + \delta_+ V_+(X) \leq S I (k_{S_+}(\beta_- - \beta_+) + \rho_+ k_{I_-}(\beta_+ - \beta_-)) \leq \max\{k_{S_+}, \rho_+ k_{I_-}\} S I (\beta_+ - \beta_-)$, which gives (10) by integration. This proves point *ii*. and achieves the proof of Theorem 1. \square

5 Numerical experiments

We consider in the sequel the following parameter values. One takes $\mu = 0.02/\text{year}$, $\gamma = \frac{1}{20}/\text{day} = \frac{365}{20}/\text{year}$. The transmission rate $\beta(t)$ is taken as $\beta^*(1 + \eta \cos(\omega t))$, with nominal value β^* such that $\mathcal{R}_0 = \frac{\beta^*}{\mu + \gamma} = 17$, $\eta = 0.4$ and $\omega = 2.4 \text{rad./year}$, close to the pulsation of the near-equilibrium natural oscillations. Last, S and I are initialized at 0.06 and 0.001, close to the perturbation-free equilibrium ($\eta = 0$), and the observer initial conditions as 0 and 1 (lower and upper values).

The gains were chosen as follows

$$k_{S_+} = \frac{\gamma}{I_- + \frac{S_+}{\rho_+}} \frac{1}{\beta_-}, \quad k_{I_-} = 0$$

$$k_{S_-} = \max \left(\frac{\gamma}{I_+ + \frac{S_+}{\rho_-}} \frac{1}{\beta_+}, \frac{1}{1 + \frac{S_-}{\varepsilon}} \right) \text{ with } \varepsilon = 5 \times 10^{-3}, \quad k_{I_+} = \frac{1}{\rho_- \beta_-} \left(\beta_+ k_{S_-} - \frac{\gamma}{I_+ + \frac{S_+}{\rho_-}} \right)$$

in accordance with (9). The small parameter ε is introduced in order to ensure that S_- remains positive, according to Lemma 2.

- First, essays were realized in the absence of uncertainty on the transmission rate, that is taking $\beta = \beta_- = \beta_+$. Figure 1 shows, for $\rho_{\pm} = 100$, the logarithm of the errors of S_{\pm} , i.e., $\log_{10}(e_{S_+}) = \log_{10}(S_+ - S)$ and $\log_{10}(e_{S_-}) = \log_{10}(S - S_-)$. We see that it decays with a high speed, whose instantaneous values are between μ and $\mu + \gamma$, as proved in Theorem 1.

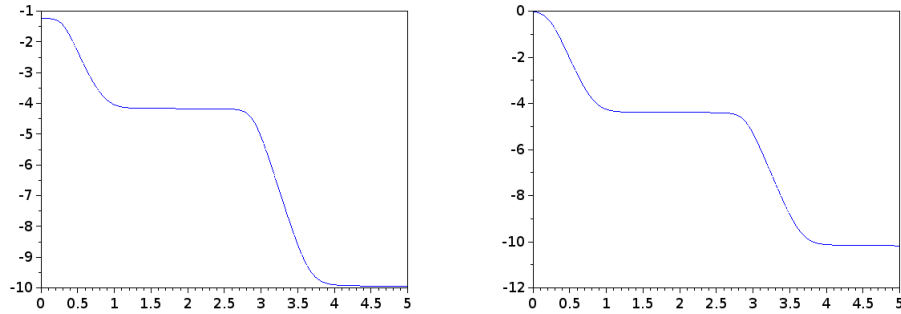


Fig. 1 Decimal logarithm of the e_{S_-} (left) and e_{S_+} (right) as a function of time (in years).

- We now introduce uncertainty in the transmission rate. We use quite imprecise estimates, namely $\beta_{\pm}(t) = (1 \pm 0.6)\beta(t)$. Figure 2 shows results for $\rho_{\pm} = 10^2, 10^3, 10^4$.

The convergence of I_{\pm} towards I is fast, with small residual errors. On the other hand, errors remain present in the estimates of S , illustrating the phenomenon mentioned right after Theorem 1.

6 Conclusion

A family of SIR model with time-varying transmission rate has been considered. For these models, a class of interval observers has been proposed, assuming that the rate of new infectives is continuously measured and that the transmission rate is uncertain and limited by (time-varying) known lower and upper bounds. It has been shown that these observers ensure fast convergence to the exact values in absence of

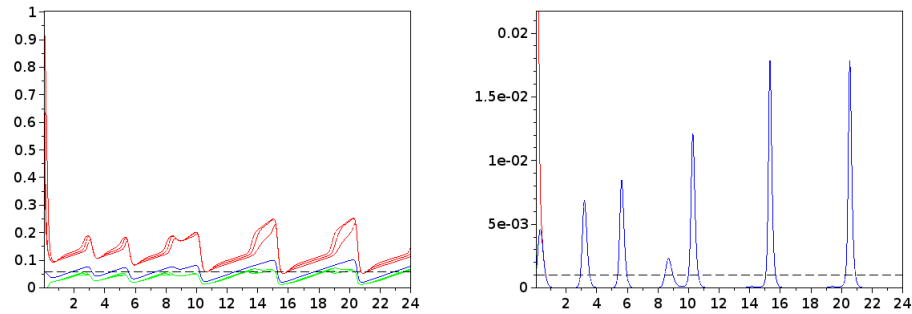


Fig. 2 Actual value (blue), lower estimates (green) and upper estimates (red) of S (left) and I (right) as functions of time (in years). The values at unperturbed equilibrium appear as dashed lines.

uncertainty. For uncertain transmission rates, analytical bounds have been provided for the estimation errors.

To improve these results, we plan to consider in the future higher-order observers, and to apply the techniques of bundles of interval observers introduced in [2]. Also, processing real experimental data should allow to assess the interest of the proposed method.

References

1. Berman, A., Plemmons, R.J.: Nonnegative matrices in the mathematical sciences. *Classics in Applied Mathematics* **9** (1979)
2. Bernard, O., Gouzé, J.L.: Closed loop observers bundle for uncertain biotechnological models. *Journal of process control* **14**(7), 765–774 (2004)
3. Bichara, D., Cozic, N., Iggidr, A.: On the estimation of sequestered infected erythrocytes in *Plasmodium falciparum* malaria patients. *Mathematical Biosciences and Engineering (MBE)* **11**(4), 741–759 (2014)
4. Capasso, V.: *Mathematical structures of epidemic systems*, vol. 88. Springer (1993)
5. Diaby, M., Iggidr, A., Sy, M.: Observer design for a schistosomiasis model. *Mathematical biosciences* **269**, 17–29 (2015)
6. Dietz, K.: The incidence of infectious diseases under the influence of seasonal fluctuations. In: *Mathematical models in medicine*, pp. 1–15. Springer (1976)
7. Efimov, D., Raïssi, T., Chebotarev, S., Zolghadri, A.: Interval state observer for nonlinear time varying systems. *Automatica* **49**(1), 200–205 (2013)
8. Gouzé, J.L., Rapaport, A., Hadj-Sadok, M.Z.: Interval observers for uncertain biological systems. *Ecological modelling* **133**(1), 45–56 (2000)
9. Hirsch, M.W.: Stability and convergence in strongly monotone dynamical systems. *J. reine angew. Math* **383**, 1–53 (1988)
10. Horn, R.A., Johnson, C.R.: *Topics in matrix analysis*. Cambridge University Press, New York (1991)
11. Keeling, M.J., Rohani, P.: *Modeling infectious diseases in humans and animals*. Princeton University Press (2008)

12. Kuznetsov, Y.A., Piccardi, C.: Bifurcation analysis of periodic SEIR and SIR epidemic models. *Journal of mathematical biology* **32**(2), 109–121 (1994)
13. Mason, O., Shorten, R.: Quadratic and copositive Lyapunov functions and the stability of positive switched linear systems. (2007)
14. Meslem, N., Ramdani, N., Candau, Y.: Interval observers for uncertain nonlinear systems. Application to bioreactors. In: Seoul, Korea. 17th IFAC World Congress, pp. 9667–9672 (2008)
15. Smith, H.L.: Monotone dynamical systems: an introduction to the theory of competitive and cooperative systems, *Mathematical surveys and monographs*, vol. 41. American Mathematical Society (1995)