



**HAL**  
open science

## **Research and Application of Cultivation-Simulation-Optimization Decision Making System for Rapeseed (Brassica Napus L.)**

Hongxin Cao, Chunlei Zhang, Baojun Zhang, Suolao Zhao, Daokuo Ge, Baoqing Wang, Chuanbao Zhu, David B. Hannaway, Dawei Zhu, Juanuan Zhu, et al.

► **To cite this version:**

Hongxin Cao, Chunlei Zhang, Baojun Zhang, Suolao Zhao, Daokuo Ge, et al.. Research and Application of Cultivation-Simulation-Optimization Decision Making System for Rapeseed (Brassica Napus L.). 4th Conference on Computer and Computing Technologies in Agriculture (CCTA), Oct 2010, Nanchang, China. pp.441-456, <10.1007/978-3-642-18336-2\_54>. <hal-01562807>

**HAL Id: hal-01562807**

**<https://inria.hal.science/hal-01562807v1>**

Submitted on 17 Jul 2017

HAL is a multi-disciplinary open access archive for the deposit and dissemination of scientific research documents, whether they are published or not. The documents may come from teaching and research institutions in France or abroad, or from public or private research centers.

L'archive ouverte pluridisciplinaire HAL, est destinée au dépôt et à la diffusion de documents scientifiques de niveau recherche, publiés ou non, émanant des établissements d'enseignement et de recherche français ou étrangers, des laboratoires publics ou privés.



Distributed under a Creative Commons CC BY 4.0 - Attribution - International License

# Research and application of cultivation-simulation-optimization decision making system for rapeseed (*Brassica napus* L.)

Hongxin Cao<sup>1</sup>, Chunlei Zhang<sup>2</sup>, Baojun Zhang<sup>3</sup>, Suolao Zhao<sup>3</sup>, Daokuo Ge<sup>1</sup>, Baoqing Wang<sup>3</sup>, Chuanbao Zhu<sup>4</sup>, David B. Hannaway<sup>5</sup>, Dawei Zhu<sup>1</sup>, Juanuan Zhu<sup>3</sup>, Jinying Sun<sup>6</sup>, Yan Liu<sup>1</sup>, Yongxia Liu<sup>1</sup>, Xiufang Wei<sup>1</sup>

<sup>1</sup>Institute of Agricultural Resources and Environment Research/Engineering Research Center for Digital Agriculture, Jiangsu Academy of Agricultural Sciences, Nanjing 210014, Jiangsu; <sup>2</sup>Institute of Oil Crops Research, Chinese Academy of Agricultural Sciences, Wuhan 430062, Hubei; <sup>3</sup>Northwest Sci-Tech University of Agriculture and Forestry, Yangling 712100, Shaanxi, China; <sup>4</sup>Liaocheng Municipal Agric Technology Extension Station, Liaocheng, Shandong 252500; <sup>5</sup>College of Agricultural Sciences, Oregon State University, Corvallis, Oregon 97331, USA; <sup>6</sup>Agricultural Technological Extensive Station of Luntai County, Luntai, 841600, Xinjiang, P.R. China

Email: caohongxin@hotmail.com

**Abstract** The objectives of this study were to develop Rapeseed Cultivation Simulation-Optimization-Decision Making System (Rape-CSODS), and validate it in order to design rapeseed planting, regulate and control its growth and development, and fulfill its high yield, good quality, high benefits, and standard production eventually. The models in Rape-CSODS were developed based on field experiments with 3 cultivars, 2 plant types, 6 sowing dates, and 4 sites from 2002 to 2008 in the middle and lower valley of Yangtze river in China and relative data from references of rapeseed research, employed ideas of R/WCSODS (Rice/Wheat Cultivation Simulation-Optimization-Decision Making System), then Rape-CSODS were developed through integrating rapeseed growth models, optimization models, and expert knowledge. In that the rapeseed growth models mainly included phenophase, leaf age, population dynamic, and organ forming etc., and the optimization models for rapeseed cultivation mainly included the optimum biomass, the optimum LAI, the optimum shoot and ramification number dynamics models, and the optimum decision making models for nitrogen and water etc. As a case, the system has been applied in Shandong Province in this study, and the results showed that the scheme get by this systems can increase green leaf number before over-winter, 1.1; 1000-weight, 0.2g; and rapeseed yield, 676.5 kg ha<sup>-1</sup> at mature, comparing with rapeseed production in the same conditions. The Rape-CSODS with general adaptability, clear yield aim, better mechanism, and dynamic characteristic can get the optimum management sheet pre-planting, micro-adjustment sheet during growth for rapeseed under different climates, soil, cultivars, and yielding levels.

**Key words:** Rapeseed; Cultivation; Growth Models; Optimization Models; Decision Making System; Research and Application

## 1. INTRODUCTION

Rapeseed is one of four main oil crops in the world, whose plant area is about 14.1million ha in general. In the same time, it is also main oil crops in China, and its plant area is 4.0-5.0 million ha.

The crop simulation and the 3S (GPS, GIS, and RS) technology are the core and foundation of digital cultivation technique systems (Cao *et al.*, 2005), and the crop simulation technology mainly included the crop growth models, the optimum models in cultivation, and the simulation-optimization-decision making. In that the optimum models in rapeseed cultivation were mainly the models of the optimum season, population dynamic, seed rate, fertilizer rate, and soil water etc., which set a basis and goals for the simulation-optimization-decision making in rapeseed, and had an important significant in promoting digital cultivation and realizing objective dynamic quantitative and optimum management.

In the world, the research of rapeseed models can be divided into two stages obviously, i.e. the empirical models as main (70-80's of 20 century), and the (partially) mechanism models as main (since 90's of 20 century). In the later stage, the rapeseed growth and development and ecological system models such as EPR95 (Kiniry *et al.*,1983), DAR95 (Peterson *et al.*,1995), LINTUL-BRASNAP (Habekott é 1997), CERES-rape (Gabrielle *et al.*,1998,1999), APSIM-Canola (Robertson *et al.*,1997), and CECOL (Husson *et al.*,1997) etc. were developed, and they can simulate rapeseed growth and development in real time. However, in China, the research of rapeseed simulation model were not more. Liao *et al.* (2002a, 2002b) studied characteristics of dry matter accumulation, distribution, and transfer of winter rapeseed, and developed the knowledge-based expert system for rapeseed production. Liu *et al.* (2003, 2004) set up simulation model of rapeseed phenophase etc. Zhu *et al.* (2004, 2005, 2007) studied dynamic knowledge model and decision support system for rapeseed cultivation. Cao *et al.* (2006, 2009) carried out the studies of simulation models of phenophase, leaf age, dry matter, leaf area, and ramification numbers. Tang *et al.* (2006, 2007a, 2007b) studied dynamic simulation on photosynthesis and dry matter accumulation, shoot dry matter partitioning, and yield formation of rapeseed, and developed a growth model-based decision support system for rapeseed management. However, few studies have been done on research and application of cultivation-simulation-optimization decision making system for rapeseed.

The objectives of this paper were to establish Rapeseed Cultivation Simulation-Optimization-Decision Making System (Rape-CSODS) through combining the rapeseed growth models, the optimization models for rapeseed cultivation, and expert knowledge for plant diseases and insect pest of rapeseed, apply it in rapeseed production in Liaocheng of Shandong province of China, and validate it in order to design rapeseed planting, regulate and control its growth and development, and to fulfill its high yield, good quality, high benefits, and standard production eventually. In that the models in Rape-CSODS were developed based on field experiments in Yangtze river middle and lower valley of China.

## 2. MATERIALS AND METHEODS

### 2.1 Materials

“Zhongshuang 9” (V1, conventional) and “Zhongyouza 2” (V2, hybrid) (breed by Institute of Oil Crops Research, China Academy of Agricultural Sciences, CAAS), and “Ningyou16” (V3,

conventional) and “Ningyou18” (V4, conventional) (breed by Institute of Economic Crops Research, Jiangsu Academy of Agricultural Sciences) ,and “Qinyou 2” (V5, hybrid) (breed by Center of Sci-Tech & Education Research of Shaaxi Province) were used in the experiments.

## **2.2 Methods**

### **2.2.1 Referring to references**

Its aims were to apprehend and master the rapeseed growth and development rules and principles of growth regulation and control for rapeseed whole, and obtain initial parameters on varieties, soil, and climates etc. by referring to the references in papers and books on rapeseed physiology, ecology, and cultivation etc.

### **2.2.2 Development of Rape-SCODS**

The Rape-SCODS were established through combining the rapeseed growth models, the optimization models for rapeseed cultivation, and expert knowledge for plant diseases and insect pest of rapeseed using Visual Basic ver. 6.0 and VFP ver. 6.0.

### **2.2.3 Validation of Rape-SCODS**

The scheme get by this systems, Rape-SCODS, were compared with rapeseed production in the same weather, soil, cultivars.

### **2.2.4 Experiments**

In order to decide the parameters of the models and verify the models, the field experiments with different rapeseed cultivar types in multi-sites and multi-years were carried out.

Experiment 1: Two rapeseed cultivars, V1 and V2, were grown in the field from 2002 to 2005 on Red loam soil near Wuhan (soil test in pre-planting results indicated the following: total nitrogen, 1.2 g kg<sup>-1</sup>; organic matter, 20.7 g kg<sup>-1</sup>; pH, 7.79; and volume weight, 1.50g/cm<sup>3</sup>, 30° 05' N), Hubei Province. The six planting dates were 15 September, 22 September, 29 September, 6 October, 13 October, and 20 October, respectively. The experiment included 12 treatments, 3 replications, and 36 subplots arranged random with 8.00- by 2.50-m. Fertilizing and other field managements in subplots were the same. Fertilizer contained 180 kg N ha<sup>-1</sup>, 120 kg P<sub>2</sub>O<sub>5</sub> ha<sup>-1</sup>, 180 kg K<sub>2</sub>O ha<sup>-1</sup>, and 15 kg boron ha<sup>-1</sup>.

Experiment 2: The rapeseed cultivar, V3, was grown in the field from 2006 to 2007 on Yellow umber soil with higher fertility in pre-planting in soil in Nanjing (32° 03' N), Jiangsu Province. 2 treatments (direct seeding, and transplant), 3 replications, and 6 subplots arranged random with 3.00- by 2.50-m were set to the experiments. Fertilizing and other field managements in plots were the same.

Experiment 3: The rapeseed cultivars, V3 and V4, were grown in the field from 2007 to 2008 on Yellow umber soil with higher fertility in pre-planting in soil in Nanjing (32° 03' N), Jiangsu Province. The experiment included 2 cultivars and 2 nitrogen levels (Fertilizer: 0.018kg N m<sup>-2</sup>; 0.012kg P<sub>2</sub>O<sub>5</sub> m<sup>-2</sup>; 0.018kg K<sub>2</sub>O m<sup>-2</sup>; and 0.0015kg borax m<sup>-2</sup>; CK: no fertilizer), 4 treatments, 3 replications, and 12 subplots arranged random with 40.0-cm row spacing, 17-20 cm plant spacing in 7.00- by 4.30-m area. Fertilizing and other field managements in plots were the same.

The phenophase, LAI, the total shoot numbers, dry matter, leaf number, leaf photosynthesis, plant characters, and meteorological and soil data etc. were observed during rapeseed growth or after harvest.

### 3. CULTIVATION-SIMULATION-OPTIMIZATION DECISION MAKING SYSTEM FOR RAPESEED (Rape-CSODS)

#### 3.1 Structure and Functions of Rape-CSODS

The system was developed based on the principles on eco-physiology for rapeseed, balance of soil nutrition and moisture, agricultural system science and agricultural meteorology, the optimization of rapeseed cultivation, and so on, and included rapeseed growth and optimization models, databases, system platform, and function (Fig.1). In that there were the simulation models for growth and development in rapeseed (see APPENDIX below), the optimization models of rapeseed cultivation (see APPENDIX below), and generating models for weather data (see APPENDIX below), there were mainly the parameters for weather, soil, and cultivars, and expert knowledge for managements for nutrition and water in soil and controlling for diseases, insect pests, and weeds in rapeseed in databases, there were the interface for decision making, databases, 4 sub-systems with parameter adjusting, decision making in normal year, decision making in current year, and analyzing for cultivar suitability in the system platform, and there were mainly determining the model parameter, the optimization cases and for rapeseed cultivation in normal year, the revising scheme for rapeseed cultivation in current year, suggestion for suitable plant areas for rapeseed cultivars, printing sheet for decision making, and so on.

The interface for decision making was developed using Visual Basic ver.6.0, which included main menu and first level sub-menu with linking every sub-systems (Fig.2 to Fig.5) with independent main interfaces and main menu, the background databases were designed using VFP ver. 6.0, and the output of the decision making results can link with Excel.1998-2007.



Fig. 2. The system main interface



Fig. 3. Browse of meteorological data in local



Fig. 4. Selection and input for cultivars



Fig. 5. The optimum fertilizer balance-sheet in the normal year

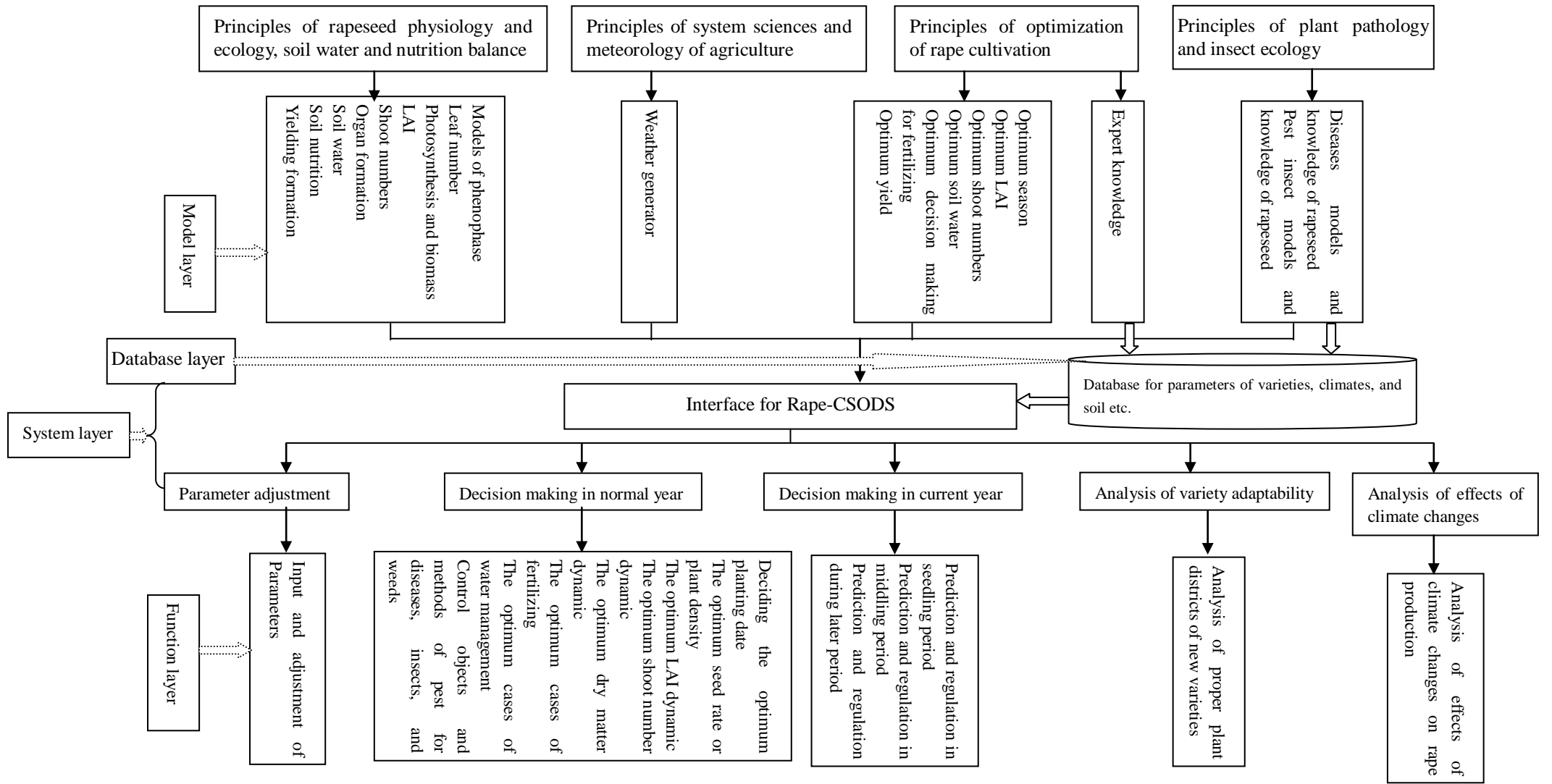


Fig. 1. Chart of the structure and functions of Rape-CSODS

## 3.2 Running Environment of System

### 3.2.1 Hardware

The system required personal computer with the model Pentium IV or above, disk driver, and laser or stylus printer.

### 3.2.2 Software

The system required WIN98 or above operation system, Visual Basic ver. 6.0, VFP ver. 6.0 or above, and Excel.1997 or above.

## 4. APPLICATION OF SYSTEM

### 4.1 Basic Situations of Site

Rape-CSODS was applied in Liaocheng of Shandong province in 2006-2007, and the demonstration area was at 7.73 ha located in Houlou Village, Jiazhai, Chiping County with planting pattern of direct seeding between rows of pre-crop corn.

The optimization scheme in normal year were gained by Rape-CSODS using the meteorological data in normal year in Liaocheng (Table 1), the average soil nutrition data in the demonstration area (soil texture, sandy loam; soil organic matter, 9.5 g kg<sup>-1</sup>; total nitrogen, 0.83 g kg<sup>-1</sup>; P<sub>2</sub>O<sub>5</sub>, 18.5 mg kg<sup>-1</sup>; K<sub>2</sub>O, 102 mg kg<sup>-1</sup>), and the cultivar, “Qinyou 2” through combining the scheme with the local expert knowledge on Rapeseed. The managements of the demonstration area were carried in accordance with the optimization scheme from Rape-CSODS, and the control rapeseed field was used in the conventional managements under the same conditions such as soil, weather, and cultivar.

**Table 1 Meteorological data in the normal year in Liaocheng**

Months	Monthly mean temperature (°C)	Monthly mean maximum temperature (°C)	Monthly mean minimum temperature (°C)	Monthly sun time (h)	Monthly rainfall (mm)	Monthly rainy days (D)
1	-2.0	3.4	-6.6	162.0	4.3	2.5
2	0.9	6.1	-4.2	161.0	7.1	2.8
3	7.1	13.1	1.6	198.0	14.6	4.3
4	14.6	20.5	8.5	231.0	23.8	5.7
5	20.0	26.7	14.4	263.0	45.8	5.4
6	25.2	31.7	19.5	246.0	69.3	7.8
7	26.7	31.4	22.5	204.0	185.5	12.7
8	25.4	30.3	21.5	216.0	123.3	10.5
9	20.6	26.2	15.7	214.0	55.2	6.8
10	14.4	20.6	9.5	200.0	36.7	5.1
11	6.6	12.4	2.0	170.0	13.4	5.2
12	0.2	5.2	-4.2	157.0	6.1	2.4

## 4.2 Comparison of results

### 4.2.1 The Seedling situations in rapeseed before over-winter

The various indices of seedling status in rapeseed before over-winter in demonstration area were larger than that of the control, e.g. the green leaf numbers per plant, leaf area per plant, and dry matter per plant increased 1.1, 221 cm<sup>2</sup>, and 1.5g, respectively (Table 2).

**Table 2 Seedling status in rapeseed before over-winter in 2006**

Items	Green leaf numbers per plant	Diameter of rootstalk (cm)	Leaf area per plant (cm <sup>2</sup> )	LAI	Fresh weight per plant (g)	Dry weight per plant (g)
Demonstration area(D)	10.6	1.4	1961	1.82	162.3	15.8
Control area(CK)	9.5	1.3	1740	1.73	151.4	14.3
±(D-CK)	1.1	0.1	221	0.09	10.9	1.5

The investigation date was on Dec. 20, 2006

### 4.2.2 The yield and yield components

Under the same conditions, 1000-grain weight and yield in demonstration area was larger than that of the control, e.g. the 1000-grain weight increased 0.2g, and the yield raised 676.5kg ha<sup>-1</sup>, respectively (Table 3).

**Table 3 Analysis on rapeseed yield and yield components in 2006-2007**

Items	Plants (10 <sup>4</sup> /ha)	Plant height (cm)	Length of available ramification (cm)	available ramification numbers on main stem	Length of main anthotaxy (cm)	Pod number on main anthotaxy	Pod number per plant	Seed number per pod	1000-weight (g)	Yields (kg/ha)
Demonstration area (D)	17.1	1.65	38.4	8.3	55.5	76	336.2	18.1	3.4	2829.0
Control area (CK)	17.1	1.55	35.1	6.9	49.3	71	258.5	17.9	3.2	2152.5
±(D-CK)	0	0.10	3.3	1.4	6.2	5	77.7	0.2	0.2	676.5

## 5. DISCUSSION AND CONCLUSIONS

### 5.1 Discussion

At present, the development direction of rapeseed production is the high yield, good quality and end-uses, therefore, it is a basic guarantee of health development of rapeseed production to realize regionalization of distribution, large regional precision planting, standardization of production, and informationalization of managements.

### **Regionalization of distribution**

Analysis of cultivar adaptability can be made by Rape-CSODS, which will help to know possible proper plant regions of cultivars, and develop potential extensive values for it. Of course, in order to fulfill this purpose, it is need to integrate with GIS.

### **Large scale precision planting**

In the large scale planting, it is need to decide corresponding plant sheets under different weather, soil, and cultivar conditions, and the purposes can be realize using Rape-CSODS quickly expediently easily. In addition, the decision making with precision and digital can be done by Rape-CSODS, which will also help to realize precision planting, and it is a precision planting technology with low-cost.

### **Standardization of production**

The cultivation practices with standardization can be integrated in pre-sowing plant sheet, which is a benefit references for planter. As long as you done according to it, standardization of production can be fulfilled.

### **Informationalization of managements**

Informationalization of crop managements is one of crucial contents for modern agriculture. The Rape-CRSODS and its application in rapeseed production set a basis for informationalization management of rapeseed production. With wide use of internet, informationalization management can be more feasible in agriculture, therefore, it is need to be integrated with internet.

## **5.2 Conclusions**

Rape-CSODS contained simulation models for growth and development in rapeseed, the optimization models of rapeseed cultivation, and expert knowledge databases for managements for nutrition and water in soil and controlling for diseases, insect pests, and weeds in rapeseed, in that the rapeseed growth models mainly included phenophase, leaf age, population dynamic, and organ forming etc., and the optimization models for rapeseed cultivation mainly included the optimum biomass, the optimum LAI, the optimum shoot and ramification number dynamics models, and the optimum decision making models for nitrogen and water etc. The Rape-CSODS was a system with general adaptability, clear yield aim, better mechanism, and dynamic characteristic.

The system has been applied in Shandong Province in this study, and the results showed that the scheme get by Rape-CSODS can increase green leaf number before over-winter, 1.1; 1000-weight, 0.2g; and rapeseed yield, 676.5kg ha<sup>-1</sup> at mature, comparing with the control in the same conditions.

The Rape-CSODS was a result of applying crop simulation technology in rapeseed cultivation, managements, and informational management system for rapeseed cultivation, which overcome lag and non-dynamic disadvantages of results from 2-3 year field experiment data on cultivation conventionally, and had a huge market and wide application foreground.

## **ACKNOWLEDGEMENT**

The authors would like to express their appreciation to funding of national projects in the tenth

five-year plan (2001BA507A-09-04), 948 projects of Agricultural Ministry of China(2004- Z 30), the national star project (2008GA690171), Jiangsu Province projects(06-G-169), and Jiangsu Government Scholarship for Overseas Studies; to Professor Qi Cunkou, and Associated Professor Chen Xinjun of the Institute of Economic Crops Research, JAAS for providing test materials.

## References

- Cao H X, Zhang C L, Jin Z Q, Shi C L, Ge D K, et al. 2005. Discussing of Frame and Technological Systems for Digital Cultivation. *J Farming and Cultivation*,(3):4-7.
- Cao H X, Zhang C L, Li G M, Zhang B J, Zhao S L, Wang B Q, Xu J F, Liu Q Y, Jin Z Q, Gao L Z. 2005. Researches of Decision-making System for Rape Optimization-Digital Cultivation Based on Simulation Models, in: *The Third International Conference on Intelligent Agricultural Information Technology*, Beijing: China Agri. Sci. & Tech. Press, 285-292.
- Cao H X, Zhang C L, Li G M, Zhang B J, Zhao S L, Wang B Q, Jin Z Q. 2006. Researches of simulation models of rape (*Brassica napus* L.) growth and development. *Acta Agron Sin*, 32(10):1530-1536. (in Chinese with English abstract)
- Cao, H., Zhang, C., Li, G., Zhang, B., Zhao, S., Wang, B., Jin, Z., Zhu, D., Zhu, J. and Wei, X. 2009. Researches of Optimum Leaf Area Index Dynamic Models for Rape (*Brassica napus* L.). in *IFIP International Federation for Information Processing, Volume 295, Computer and Computing Technologies in Agriculture II, Volume 3*, eds. D. Li, Z. Chunjiang, (Boston: Springer), pp. 1585–1594.
- CAO Hong-Xin, ZHANG Chun-Lei, LI Guang-Ming, ZHANG Bao-Jun, ZHAO Suo-Lao, et al. 2010. Researches of Optimum Shoot and Ramification Number Dynamic Models for Rapeseed (*Brassica napus* L.). in *IEEE proceedings of the 2009 International Conference on Computer and Computing Technology Applications in Agriculture*.(Accepted)
- Farré M J, Robertson G H, Walton S, Asseng. 2001. Simulating response of canola to sowing data in Western Australia. In: *Hobart Proceedings of the 10th Australia Agron Conference*, pp36-40
- Gabrielle B, Denoroy P, Gosse G, Justes E, Andersen M N. 1998. Development and evaluation of a CERES-type model for winter oilseed rape. *Field Crop Res*, 57(1):95-111
- Gabrielle B, Roche R, and Gosse G. 1999. CERES-Rape, a model for the production and environmental impact of rapeseed. *Proceedings of the 10th international rapeseed congress*, <http://www.regional.org.au/au/gcsrc/2/473.htm>.
- Gao L Z, Jin Z Q, Huang Y, Li B B, Chen H. 1992. Rice Cultivational Simulation-optimization-decision Making System. Beijing: Chinese Agri Sci & Tech Press, pp21-40 (in Chinese)
- Gao L Z, Jin Z Q, Zheng G Q, Feng L P, Zhang L Z, Shi C L, Ge D K. 2000. Wheat cultivational simulation-optimization-decision making system, *J Jiangsu Agric*, 16(2): 65-72 (in Chinese with English abstract)
- Guan C Y. 1992. *Cultivational Techniques of Good Quality and High Yielding for Rape*. Changsha: Hunan Sci & Tech Press.(in Chinese)
- Habekott B.é. 1997. A model of the phenological development of winter oilseed rape (*Brassica napus* L.). *Field Crop Res*, 54:137-153.
- Hu L Y, Liu T M, Zheng X L, Cao C G, Cao W X, Yan M C. 2004. A mechanistic of phasic and phenological development in rape. II. Verification and evaluation of the model. *Chin J of Oil Crop Sci* , 26(2):51—54 (in Chinese with English abstract)

- Husson F, Wallach D, Vandeputte A. 1997. Evaluation of CECOL, a model of winter rape (*Brassica napus* L.). *Europe J of Agron*, 18: 205-214
- Kiniry J R, Major D J, Izaurralde R C, Williams J R, Gassman P W, Morrison M, Bergentine R, Zentener R P. 1983. EPIC model parameters for cereal, oilseed, and forage crop in the north Great Plain region. *Can J Plant Sci*, 63:1063-1065
- Liao G P, Guan C Y. 2002a. Study on characteristics of dry matter accumulation, distribution and transfer of winter rapeseed (*Brassica napus*). *Acta Agron Sin*, 28(1):52-58 (in Chinese with English abstract).
- Liao G P, Guan C Y, Wu Q Y, Li A P, Chen S Y, Wang G H. 2002b. Development of knowledge-base of the expert system for rapeseed production. *Crop Res*, (3):118-121 (in Chinese with English abstract)
- Ling Q H. *Crop population quality*, 1st ed. Shanghai: Shanghai Sci and Tech Press, 2000. 217-286 (in Chinese)
- Liu H, Jin Z Q. 2003. The simulation models of rape development dynamic. *J of Appl Meteo*, (5):634-639 (in Chinese with English abstract)
- Liu H L. 1987. *Rape Culture Science for Application*. 1st ed. Shanghai: Shanghai Sci & Tech Press, pp220-221 (in Chinese)
- Liu T M, Hu L Y, Zhao Z H, Cao C G, Cao W X, Yan M C. 2004. A mechanistic of phasic and phenological development in rape. I. Description of the model. *Chin J of Oil Crop Sci*, 26(1): 27-30 (in Chinese with English abstract)
- Petersen C T, Svendsen H, Hansen S, Jensen H E, Niekssen N E. 1995. Parameter assessment for simulation of biomass production and nitrogen uptake in winter rape. *Europe J of Agron*, (4):77-89
- Robertson M J, Holland J F, Kirkegaard J A, and Smith C J. 1999. SIMULATING GROWTH AND DEVELOPMENT OF CANOLA IN AUSTRALIA. Proceedings of the 10th international rapeseed congress, <http://www.regional.org.au/au/gcirc/2/143.htm>.
- Tang L, Cao W X, Zhu Y. 2006. Development of growth model-based decision support system for rapeseed management. *Transactions of the CSAE*, 22(11):160-164. (in Chinese with English abstract)
- TANG L, ZHU Y, JU C H, CAO W X. 2007a. Dynamic simulation on shoot dry matter partitioning and yield formation of rapeseed. *Chin J of Applied Eco*, 18 (3):526-530. (in Chinese with English abstract)
- TANG L, ZHU Y, SUN X F, and CAO W X. 2007b. Dynamic Simulation Model for Photosynthesis and Dry Matter Accumulation in Rapeseed. *Acta Agron Sin*, 33 (2):189-195. (in Chinese with English abstract)
- Wang Y R. 1991. *Population Physiology of Crop High-yielding*, 1st ed. Beijing: Sci. and Tech. literature Pub. House, China. (in Chinese)
- Zhu Y, Shen W X, Cao W X, Tian Y C. 2004. Dynamic knowledge model and decision support system for rapeseed cultivation management. *Transactions of the CSAE*, 20(6):141-144. (in Chinese with English abstract)
- Zhu Y, Cao W X, Shen W X, Tian Y C. 2005. A dynamic knowledge model for fertilization management in rapeseed. *Chin J Eco*, 24 (2) :209~213. (in Chinese with English abstract)
- ZHU Y, CAO W X, TIAN Y C, YAO X. 2007. A dynamic knowledge model for designing suitable scheme of rapeseed sowing and transplanting. *Chin J of Applied Eco*, 18 (2):322-326. (in Chinese with English abstract)

## APPENDIX

### Simulation models for growth and development in rapeseed

#### Phenology

The basic models of rapeseed phenology were developed in the thesis through employing ideal of

“Rice Clock Models” (Gao *et al.*, 1992; Cao *et al.*, 2005, 2006, 2009, 2010).

$$dP_j/dt = 1/D_{Sj} = e^{kj} (T_{ebj})^{pj} \cdot (T_{euj})^{qj} \cdot (P_{ej})^{Gj} \cdot f(E_{Ci})$$

$$T_{ebj} = (T_i - T_{bj}) / (T_{oj} - T_{bj}), \text{ when } T_i < T_{bj}, T_i = T_{bj}; \text{ when } T_i > T_{oj}, T_i = T_{oj}$$

$$T_{euj} = (T_{uj} - T_i) / (T_{uj} - T_{oj}), \text{ when } T_i > T_{uj}, T_i = T_{uj}$$

$$P_{ej} = (P_i - P_{bj}) / (P_{oj} - P_{bj}), \text{ when } P_i < P_{bj}, P_i = P_{bj}; \text{ when } P_i > P_{oj}, P_i = P_{oj}$$

where  $dP_j/dt$  is the development rate at the  $j^{\text{th}}$  stages,  $D_{Sj}$  is the days at the  $j^{\text{th}}$  stages,  $T_{ebj}$  and  $T_{euj}$  are the effective factors for temperature, respectively,  $p_j$  and  $q_j$  are the genotypic coefficient of temperature effects,  $P_{ej}$  is the effective factor of photoperiod,  $G_j$  is the genotypic coefficient of photoperiod effects, and  $f(E_{Ci})$  is the effective function of agronomic practice factors for rapeseed,  $T_i$  is the daily mean temperature ( $^{\circ}\text{C}$ ) in the  $j^{\text{th}}$  stage,  $T_{bj}$ ,  $T_{oj}$  and  $T_{uj}$  are lower, optimum, and upper limit temperature ( $^{\circ}\text{C}$ ) demanded in the  $j^{\text{th}}$  stage for rapeseed, respectively, and  $P_{bj}$ ,  $P_{oj}$  are the critical and optimum day length (h) demanded in  $j^{\text{th}}$  stage for rapeseed, respectively.

Vernalization models can be described as following through employing ideals of “wheat clock models”:

$$dV/dt = 1 / D_{S2} = e^{k2} (V_e)^C$$

If a cultivar was winter or semi-winter rapeseed, the expression of  $V_e$  was:

$$V_e = \begin{cases} \frac{V_{ti}+4}{9}, & -4 < V_{ti} \leq 5^{\circ}\text{C} \\ 1.0, & 5 < V_{ti} \leq 10^{\circ}\text{C} \\ \frac{20-V_{ti}}{10}, & 10 < V_{ti} \leq 20^{\circ}\text{C} \\ 0, & V_{ti} \leq -4^{\circ}\text{C} \text{ or } V_{ti} > 20^{\circ}\text{C} \end{cases}$$

However, if it was spring rapeseed, the expression of  $V_e$  was:

$$V_e = \begin{cases} \frac{V_{ti}}{5}, & 0 < V_{ti} \leq 5^{\circ}\text{C} \\ 1.0, & 5 < V_{ti} \leq 20^{\circ}\text{C} \\ \frac{30-V_{ti}}{10}, & 20 < V_{ti} \leq 30^{\circ}\text{C} \\ 0, & V_{ti} \leq 0^{\circ}\text{C} \text{ or } V_{ti} > 30^{\circ}\text{C} \end{cases}$$

where  $K_2$  and  $C$  are the parameters of vernalization,  $V_e$  is the factor of rapeseed vernalization effect,  $V_{ti}$  is the daily mean temperature in vernalization phase. It will finish vernalization phase when  $V_e$  equal to some extent accumulation days; the vernalization days of the winter rapeseed were 30 to 40 days, the semi-winter rapeseed with 20 to 30 days, and the spring rapeseed with 15 to 20 days.

## Leaf age

The growth rate of rapeseed leaf were different in different varieties, development stages, temperature, and nutrition conditions etc., when nutrition condition was optimum, the models of rapeseed leaf age were (Gao *et al.*, 1992; Cao *et al.*, 2005, 2006, 2009, 2010):

$$dL_j/dt = f(L_j) = 1/D_{Lj} = D_{Loj} (T_t/T_o)^{La/Lb}$$

$$T_t = \begin{cases} 0, & \text{when } T_t < T_{bj} \\ T_o, & \text{when } T_t > T_o \end{cases}$$

$$D_{Loj} = e^{LK}$$

where  $dL_j/dt$  is the development rate of the  $j^{\text{th}}$  leaf age,  $f(L_j)$  is the basic development function,  $D_{Lj}$  is the development days demanded from emergence to the  $j^{\text{th}}$  leaf age,  $D_{Loj}$  is the development days demanded from emergence to the  $j^{\text{th}}$  leaf age under the optimum conditions,  $T_t$  and  $T_o$  are the daily mean temperature( $^{\circ}\text{C}$ ) of the  $t^{\text{th}}$  day, and the optimum temperature for rapeseed leaf age development, respectively, and  $La$ ,  $Lb$ ,  $LK$  are the parameters of leaf models, respectively.

## Dry matter

It was results of accumulation and partitioning in various rapeseed organ of assimilate of photosynthesis, the accumulation of dry matter in whole rapeseed growth season was a process with “S-curve” changes. Therefore, simulation models of rapeseed dry matter dynamic were (Gao *et al.*, 1992; Cao *et al.*, 2005, 2006, 2009, 2010):

$$W(t) = W(t-1) + \Delta W(t)$$

$$\Delta W(t) = \begin{cases} \beta \cdot P_{CG} - R, & \text{before elongation} \\ \frac{\beta \cdot P_{CG} - R}{1 - 0.2}, & \text{after elongation to early anthesis} \\ \frac{\beta \cdot P_{CG} - R}{1 - 0.2 - 0.4}, & \text{after early anthesis} \end{cases}$$

where  $W(t)$  and  $W(t-1)$  are the dry matter (g) of population in the  $t^{\text{th}}$ , and the  $(t-1)^{\text{th}}$  day after emergence, respectively,  $\Delta W(t)$  is the net increment (g) of dry matter of population in the  $t^{\text{th}}$  day after emergence,  $P_{CG}$  is the canopy photosynthesis rate of rapeseed ( $\text{g CO}_2 \text{ m}^{-2} \text{ h}^{-1}$ ),  $R$  is the respiration rate ( $\text{g CO}_2 \text{ m}^{-2} \text{ h}^{-1}$ ),  $\beta$  is the coefficient transforming carbohydrate into dry matter in rapeseed, 0.2 and 0.4 are ratio of photosynthesis of green stem and pod in whole photosynthesis in the same periods.

## LAI

In terms of principles of dry matter partitioning for rapeseed, the simulation models of LAI before early anthesis were (Gao *et al.*, 1992; Cao *et al.*, 2005, 2006, 2009, 2010) :

$$L_{AI}(t) = L_{AI}(t-1) + \Delta L_{AI}(t)$$

$$\Delta L_{AI}(t) = L_{AII}(t) - L_{AID}(t)$$

$$L_{AII}(t) = C_P(t) \cdot \Delta W(t) \cdot R_{LA}(t)$$

where  $L_{AI}(t)$  and  $L_{AI}(t-1)$  are LAI in the  $t^{\text{th}}$ , and the  $(t-1)^{\text{th}}$  day after emergence, respectively,  $\Delta L_{AI}(t)$  is the daily net increment of LAI in the  $t^{\text{th}}$  day after emergence,  $L_{AII}(t)$  and  $L_{AID}(t)$  are the total daily increment and decrement in the  $t^{\text{th}}$  day after emergence, respectively,  $C_P(t)$ ,  $\Delta W(t)$ , and  $R_{LA}(t)$  were partitioning coefficient of dry matter in leaf, daily accumulation rate of dry matter in plant ( $\text{g} \cdot \text{m}^{-2} \cdot \text{d}^{-1}$ ), and ratio of leaf area to dry matter ( $\text{m}^2 \cdot \text{g}^{-1}$ ), respectively.

It's decreasing after early anthesis was a function of development index:

$$L_{AI}(t) = \frac{L_{AIX}}{1 + d1 \times D_{VI}(t)^2}$$

$$D_{VI}(t) = \frac{t}{\sum_{i=1}^t \text{DPDi}/N_0}$$

where  $L_{AIX}$  is the largest LAI of rapeseed in whole growth period,  $D_{VI}(t)$  is the development index in  $t^{\text{th}}$  day after anthesis with ranges between 0 and 1,  $N_0$  is development physiological days from early anthesis to mature, and  $d1$  is a parameter of models.

## Total shoot and ramification numbers

The increasing models of shoot and ramification numbers from elongation to early anthesis were (Gao *et al.*, 1992; Cao *et al.*, 2005, 2009, 2010):

$$T_{ILN}(t) = T_{ILN}(t-1) + \Delta T_{ILN}(t)$$

$$\Delta T_{ILN}(t) = K_{TLNI}(t) T_{ILN}(t-1) D_{PD}(t) P_{TILN}(t)$$

$$P_{TILN}(t) = 1 - T_{ILN}(t-1) / T_{ILNM}$$

$$K_{TLNI}(t) = K_{TLNO} T_{LNF}(t)$$

The decreasing models of shoot and ramification numbers from early anthesis to mature were:

$$T_{ILN}(t) = T_{ILN}(t-1) + \Delta T_{ILN}(t)$$

$$\Delta T_{ILN}(t) = K_{TLNI}(t) \cdot T_{ILN}(t-1) \cdot D_{PD}(t) \cdot P_{TILN}(t)$$

$$P_{TILN}(t) = 1 - T_{ILN}(t-1) / T_{ILNM}$$

$$K_{TLNI}(t) = K_{TLNO} \cdot T_{LNF}(t)$$

where  $T_{LNF}(t)$  is the effective factor of the total leaf numbers in the  $t^{\text{th}}$  day after emergence,  $T_{ILN}(t)$  and  $\Delta T_{ILN}(t)$  are the total shoot and ramification numbers, and its daily increment (number  $m^{-2}$ ) in the  $t^{\text{th}}$  day after emergence, respectively,  $T_{ILN}(t-1)$  is an initial value of the total shoot and ramification numbers in the  $(t-1)^{\text{th}}$  day after emergence (number  $m^{-2}$ ),  $T_{ILNM}$  is the largest numbers of total shoot numbers (number  $m^{-2}$ ),  $P_{TILN}(t)$  is the ratio of total shoot and ramification numbers in the  $t^{\text{th}}$  day after emergence to  $T_{ILNM}$ ,  $D_{PD}(t)$  was the development physiological days in the  $t^{\text{th}}$  day after emergence, and  $K_{TLNI}(t)$  is increasing coefficient of shoot and ramification numbers in the  $t^{\text{th}}$  day after emergence, which was decided by nitrogen, light, temperature, and soil moisture etc.

## Optimization models in rapeseed

### Optimum season

There was an overyear in growth and development of winter rapeseed, so an important basis of deciding the optimum planting date was to get the happy seedling under different varieties and cropping systems. The green leaf numbers per plant pre-overyear can be as the happy seedling criteria based on studies of Institute of Oil Crops Research, CAAS. At first, the optimum planting date was calculated by leaf age models above, then, the other optimum phenology were calculated by phenophase models above (Gao *et al.*, 1992; Cao *et al.*, 2005, 2009, 2010).

### Optimum leaf age

The models of optimum leaf age of rapeseed were expressed as below under the optimum nutrition conditions, and the leaf development affected only by temperature (Gao *et al.*, 1992; Cao *et al.*, 2005, 2009, 2010):

$$dL_{oj}/dt = f(L_{oj})$$

$$f(L_{oj}) = 1/D_{L_{oj}} = D_{L_{oj}} (T_t/T_o)^{a/b}$$

where  $dL_{oj}/dt$  is the development rate in the  $j^{\text{th}}$  leaf age,  $f(L_{oj})$  is a basic development function of leaf age,  $D_{L_j}$  is the development days demanded from emergence to the  $j^{\text{th}}$  leaf age,  $D_{L_{oj}}$  is the development days demanded from emergence to the  $j^{\text{th}}$  leaf age under the optimum conditions, and  $T_t$  and  $T_o$  are daily mean temperature in the  $t^{\text{th}}$  day, and the optimum temperature for development of leaf age ( $^{\circ}\text{C}$ ), respectively.

### Optimum LAI

The optimum LAI in different phenophase ( $L_{AIO}$ ) of rapeseed can be expressed as follows (Gao *et al.*, 1992; Cao *et al.*, 2005, 2009, 2010):

$$L_{AIO} = - (1/E_j) \ln(B I_b / I_0)$$

where  $I_0$  is the horizontal nature light intensity above the population in the  $j^{\text{th}}$  phenology in the local, which equals to product of daily mean solar radiation by coefficient ( $C$ ),  $(B I_b)$  is the light intensity of lower part of population in the  $j^{\text{th}}$  phenology,  $E_j$  is the extinction coefficient of population in the  $j^{\text{th}}$  phenology,  $I_b$  is the compensating light intensity of lower part of population in the  $j^{\text{th}}$  phenophase.

### Optimum dry matter

The optimum dry matter at different phenology and yielding levels equals to dry matter in the

optimum LAI pre-elongation, that in the optimum LAI, and green stem area from elongation to pre-anthesis, and that in the optimum LAI, green stem area, and PAI, and its basic models can be expressed as follows (Gao *et al.*, 1992; Cao *et al.*, 2005, 2009, 2010):

$$W_o(t) = W_o(t-1) + \Delta W_o(t)$$

$$\Delta W_o(t) = \begin{cases} \beta \cdot P_{CGO} - R_o, & \text{before elongation} \\ \frac{\beta \cdot P_{CGO} - R_o}{1 - 0.2}, & \text{after elongation to early anthesis} \\ \frac{\beta \cdot P_{CGO} - R_o}{1 - 0.2 - 0.4}, & \text{after early anthesis} \end{cases}$$

where  $W_o(t)$  and  $W_o(t-1)$  are the optimum dry matter of rapeseed population in the  $t^{\text{th}}$  day, and  $(t-1)^{\text{th}}$  day after emergence (g), respectively,  $\Delta W_o(t)$  is the net increment of the optimum dry matter of rapeseed population in the  $t^{\text{th}}$  day after emergence (g),  $P_{CGO}$  is the optimum canopy photosynthesis rate ( $\text{g CO}_2 \text{ m}^{-2} \text{ h}^{-1}$ ), 0.2 and 0.4 are ratio of photosynthesis of green stem and pod in whole photosynthesis in the same periods, and the other signs are the same above.

### Optimum shoot and ramification numbers

The models of the optimum shoot and ramification numbers of rapeseed population ( $N_{FO}$ ) ( $10^4 \times \text{ha}^{-1}$ ) can be expressed as follows (Gao *et al.*, 1992; Cao *et al.*, 2005, 2009, 2010):

$$B_{SO} = N_{MF} / N_{SV}$$

$$N_{SV} = L_N / 4 + k + 1$$

$$N_{FO} = N_{MF} + N_S B_{SO}$$

$$N_S = \begin{cases} 0, & N_F \leq 8 \text{ or } N_F > 16 \\ 9, & 9 \leq N_F \leq 10 \\ 12, & 11 \leq N_F \leq 12 \\ 20, & 13 \leq N_F \leq 16 \end{cases}$$

where  $B_{SO}$  is the optimum plant numbers ( $10^4 \times \text{ha}^{-1}$ ),  $N_{MF}$  is the optimum main stem and primary shoot numbers ( $10^4 \times \text{ha}^{-1}$ ), relying on yielding levels,  $N_{SV}$  is the valid shoot and ramification numbers per pant, and  $N_F$  and  $N_S$  are the optimum primary, and secondary ramification numbers per plant, respectively.

### Optimum decision making of ecological and balance sheet for fertilizing

Based on the principles for balance sheet for fertilizing, the nutrition of fertilizer in rapeseed can be calculated as follows (Gao *et al.*, 1992; Cao *et al.*, 2005, 2009, 2010):

$$F_{NQ} = (F_{AQ} - F_{SQ}) / E_F$$

where  $F_{AQ}$  is the nutrition rate demanded in whole rapeseed growth,  $F_{SQ}$  is the nutrition rate supplied by soil, the effects of the ecological factors such as the soil nutrition contents, soil organic matter, pH, and soil temperature etc on  $F_{SQ}$  can be considered, and  $E_F$  is the use efficiency of fertilizer in the rapeseed growth season.

### Optimum decision making of soil moisture

Based on the principles for soil moisture balance, the models of profit and loss of soil water in rapeseed growth season can be expressed as follows (Gao *et al.*, 1992; Cao *et al.*, 2005, 2009, 2010):

$$D_{SW}(t) = I_{SW}(t) - O_{SW}(t)$$

$$O_{SW}(t) = E_{TA}(t) + R_U(t) + C(t)$$

$$I_{SW}(t) = W_o(t) + P(t)$$

where  $D_{sw}(t)$  is profit and loss of soil water in the  $t^{\text{th}}$  day (mm),  $I_{sw}(t)$  and  $O_{sw}(t)$  are capture, and loss of soil water in the  $t^{\text{th}}$  day (mm) in current or normal year, respectively,  $E_{TA}(t)$ ,  $R_U(t)$  and  $C(t)$  are actual evaporation-transpiration, runoff, and intercept in the  $t^{\text{th}}$  day(mm), respectively,  $W_0(t)$  is initial soil moisture in the  $t^{\text{th}}$  day (mm), and  $P(t)$  is rainfall in the  $t^{\text{th}}$  day(mm).

### Generating models for weather data

According to Gao *et al.* (1992a), the daily day length,  $DL_j$ , and daily radiation,  $QD_j$ , can be calculated below.

$$SL = 23.5 \times \sin(6.2832 \times (284 + j) / 365)$$

$$D6 = \sin((45 - (LT - SL - 0.565) / 2) \times 3.1416 / 180)$$

$$D7 = \sin((45 + (LT - SL + 0.565) / 2) \times 3.1416 / 180)$$

$$D8 = \cos(LT \times 3.1416 / 180) \times \cos(SL \times 3.1416 / 180)$$

$$D10 = (2 \tan^{-1}(\frac{\sqrt{(D6 \times D7) / D8}}{\sqrt{(1 - (D6 \times D7) / D8)}})) \times \frac{180}{\pi}$$

$$DL_j = (D10 / 15) \times 2$$

$$C1 = 3.1416 / (1 + (3.191 \times \cos(\omega \times j) + 0.695 \times \sin(\omega \times j)) / 100)$$

$$C2 = \sin(LT \times 3.1416 / 180) \times \sin(SL \times 3.1416 / 180) \times D10 \times (3.1416 / 180)$$

$$C3 = D8 \times \sin(D10 \times 3.1416 / 180)$$

$$QAX = (1.94 \times 1440) / C1 \times (C2 + C3)$$

$$QD_j = QAX \times (0.146 + 0.559 \times (ST[j] / 10) / DL_j) / 23.8846$$

where  $SL$  is solar latitude,  $j$  is day number,  $LT$  is local latitude,  $\omega$  is solar constant (taking  $\omega = 6.28 / 365$ ), and  $ST[j]$  is sun time on  $j^{\text{th}}$  day.