



Morphological Plant Modeling: Unleashing Geometric and Topological Potential within the Plant Sciences

Alexander B Bucksch, Acheampong Atta-Boateng, Akomian F Azihou, Dorjsuren P Battogtokh, Aly B Baumgartner, Brad N Binder, Siobhan A Braybrook, Cynthia Chang, Viktoirya C Coneva, Thomas P Dewitt, et al.

► To cite this version:

Alexander B Bucksch, Acheampong Atta-Boateng, Akomian F Azihou, Dorjsuren P Battogtokh, Aly B Baumgartner, et al.. Morphological Plant Modeling: Unleashing Geometric and Topological Potential within the Plant Sciences. *Frontiers in Plant Science*, 2017, 8 (900), pp.16. 10.3389/fpls.2017.00900 . hal-01537909

HAL Id: hal-01537909

<https://inria.hal.science/hal-01537909>

Submitted on 13 Jun 2017

HAL is a multi-disciplinary open access archive for the deposit and dissemination of scientific research documents, whether they are published or not. The documents may come from teaching and research institutions in France or abroad, or from public or private research centers.

L'archive ouverte pluridisciplinaire **HAL**, est destinée au dépôt et à la diffusion de documents scientifiques de niveau recherche, publiés ou non, émanant des établissements d'enseignement et de recherche français ou étrangers, des laboratoires publics ou privés.



Morphological Plant Modeling: Unleashing Geometric and Topological Potential within the Plant Sciences

OPEN ACCESS

Edited by:

Katrin Kahlen,
Hochschule Geisenheim University,
Germany

Reviewed by:

Evelyn Costes,
Institut National de la Recherche
Agronomique (INRA), France
Leo Marcellis,
Wageningen University and Research,
Netherlands

*Correspondence:

Alexander Bucksch
bucksch@uga.edu
Daniel H. Chitwood
dhchitwood@gmail.com

Specialty section:

This article was submitted to
Plant Biophysics and Modeling,
a section of the journal
Frontiers in Plant Science

Received: 05 October 2016

Accepted: 12 May 2017

Published: 09 June 2017

Citation:

Bucksch A, Atta-Boateng A,
Azihou AF, Battogtokh D,
Baumgartner A, Binder BM,
Braybrook SA, Chang C, Coneva V,
DeWitt TJ, Fletcher AG, Gehan MA,
Diaz-Martinez DH, Hong L,
Iyer-Pascuzzi AS, Klein LL, Leiboff S,
Li M, Lynch JP, Maizel A, Maloof JN,
Markelz RJC, Martinez CC, Miller LA,
Mio W, Palubicki W, Poorter H,
Pradal C, Price CA, Puttonen E,
Reese JB, Rellán-Álvarez R,
Spalding EP, Sparks EE, Topp CN,
Williams JH and Chitwood DH (2017)
Morphological Plant Modeling:
Unleashing Geometric
and Topological Potential within
the Plant Sciences.
Front. Plant Sci. 8:900.
doi: 10.3389/fpls.2017.00900

Alexander Bucksch^{1,2,3*}, Acheampong Atta-Boateng⁴, Akomian F. Azihou⁵,
Dorjsuren Battogtokh⁶, Aly Baumgartner⁷, Brad M. Binder⁸, Siobhan A. Braybrook⁹,
Cynthia Chang¹⁰, Viktoirya Coneva¹¹, Thomas J. DeWitt¹², Alexander G. Fletcher¹³,
Malia A. Gehan¹¹, Diego Hernan Diaz-Martinez¹⁴, Lilan Hong¹⁵, Anjali S. Iyer-Pascuzzi¹⁶,
Laura L. Klein¹⁷, Samuel Leiboff¹⁸, Mao Li¹⁴, Jonathan P. Lynch¹⁹, Alexis Maizel²⁰,
Julin N. Maloof²¹, R. J. Cody Markelz²¹, Ciera C. Martinez²², Laura A. Miller²³,
Washington Mio¹⁴, Wojtek Palubicki⁹, Hendrik Poorter²⁴, Christophe Pradal²⁵,
Charles A. Price²⁶, Eetu Puttonen^{27,28}, John B. Reese²⁹, Rubén Rellán-Álvarez³⁰,
Edgar P. Spalding³¹, Erin E. Sparks³², Christopher N. Topp¹¹, Joseph H. Williams²⁹ and
Daniel H. Chitwood^{11*}

¹ Department of Plant Biology, University of Georgia, Athens, GA, United States, ² Warnell School of Forestry and Natural Resources, University of Georgia, Athens, GA, United States, ³ Institute of Bioinformatics, University of Georgia, Athens, GA, United States, ⁴ School of Forestry and Environmental Studies, Yale University, New Haven, CT, United States, ⁵ Laboratory of Applied Ecology, Faculty of Agronomic Sciences, University of Abomey-Calavi, Cotonou, Benin, ⁶ Department of Biological Sciences, Virginia Polytechnic Institute and State University, Blacksburg, VA, United States, ⁷ Department of Geosciences, Baylor University, Waco, TX, United States, ⁸ Department of Biochemistry and Cellular and Molecular Biology, University of Tennessee, Knoxville, Knoxville, TN, United States, ⁹ The Sainsbury Laboratory, University of Cambridge, Cambridge, United Kingdom, ¹⁰ Division of Biology, University of Washington, Bothell, WA, United States, ¹¹ Donald Danforth Plant Science Center, St. Louis, MO, United States, ¹² Department of Wildlife and Fisheries Sciences—Department of Plant Pathology and Microbiology, Texas A&M University, College Station, TX, United States, ¹³ School of Mathematics and Statistics and Bateson Centre, University of Sheffield, Sheffield, United Kingdom, ¹⁴ Department of Mathematics, Florida State University, Tallahassee, FL, United States, ¹⁵ Weill Institute for Cell and Molecular Biology and Section of Plant Biology, School of Integrative Plant Sciences, Cornell University, Ithaca, NY, United States, ¹⁶ Department of Botany and Plant Pathology, Purdue University, West Lafayette, IN, United States, ¹⁷ Department of Biology, Saint Louis University, St. Louis, MO, United States, ¹⁸ School of Integrative Plant Science, Cornell University, Ithaca, NY, United States, ¹⁹ Department of Plant Science, The Pennsylvania State University, University Park, PA, United States, ²⁰ Center for Organismal Studies, Heidelberg University, Heidelberg, Germany, ²¹ Department of Plant Biology, University of California, Davis, Davis, CA, United States, ²² Department of Molecular and Cell Biology, University of California, Berkeley, Berkeley, CA, United States, ²³ Program in Bioinformatics and Computational Biology, The University of North Carolina, Chapel Hill, NC, United States, ²⁴ Plant Sciences (IBG-2), Forschungszentrum Jülich GmbH, Jülich, Germany, ²⁵ CIRAD, UMR AGAP, INRIA, VirtualPlants, Montpellier, France, ²⁶ National Institute for Mathematical and Biological Synthesis, University of Tennessee, Knoxville, Knoxville, TN, United States, ²⁷ Department of Remote Sensing and Photogrammetry, Finnish Geospatial Research Institute, National Land Survey of Finland, Masala, Finland, ²⁸ Centre of Excellence in Laser Scanning Research, National Land Survey of Finland, Masala, Finland, ²⁹ Department of Ecology and Evolutionary Biology, University of Tennessee, Knoxville, Knoxville, TN, United States, ³⁰ Unidad de Genómica Avanzada, Laboratorio Nacional de Genómica para la Biodiversidad, Center for Research and Advanced Studies of the National Polytechnic Institute (CINVESTAV), Irapuato, Mexico, ³¹ Department of Botany, University of Wisconsin–Madison, Madison, WI, United States, ³² Department of Plant and Soil Sciences and Delaware Biotechnology Institute, University of Delaware, Newark, DE, United States

The geometries and topologies of leaves, flowers, roots, shoots, and their arrangements have fascinated plant biologists and mathematicians alike. As such, plant morphology is inherently mathematical in that it describes plant form and architecture with geometrical and topological techniques. Gaining an understanding of how to modify plant morphology, through molecular biology and breeding, aided by a mathematical perspective, is critical to improving agriculture, and the monitoring of ecosystems

is vital to modeling a future with fewer natural resources. In this white paper, we begin with an overview in quantifying the form of plants and mathematical models of patterning in plants. We then explore the fundamental challenges that remain unanswered concerning plant morphology, from the barriers preventing the prediction of phenotype from genotype to modeling the movement of leaves in air streams. We end with a discussion concerning the education of plant morphology synthesizing biological and mathematical approaches and ways to facilitate research advances through outreach, cross-disciplinary training, and open science. Unleashing the potential of geometric and topological approaches in the plant sciences promises to transform our understanding of both plants and mathematics.

Keywords: plant biology, plant science, morphology, mathematics, topology, modeling

INTRODUCTION

Morphology from the Perspective of Plant Biology

The study of plant morphology interfaces with all biological disciplines (**Figure 1**). Plant morphology can be descriptive and categorical, as in systematics, which focuses on biological homologies to discern groups of organisms (Mayr, 1981; Wiens, 2000). In plant ecology, the morphology of communities defines vegetation types and biomes, including their relationship to the environment. In turn, plant morphologies are mutually informed by other fields of study, such as plant physiology, the study of the functions of plants, plant genetics, the description of inheritance, and molecular biology, the underlying gene regulation (Kaplan, 2001).

Plant morphology is more than an attribute affecting plant organization, it is also dynamic. Developmentally, morphology reveals itself over the lifetime of a plant through varying rates of cell division, cell expansion, and anisotropic growth (Esau, 1960; Steeves and Sussex, 1989; Niklas, 1994). Response to changes in environmental conditions further modulate the abovementioned parameters. Development is genetically programmed and driven by biochemical processes that are responsible for physical forces that change the observed patterning and growth of organs (Green, 1999; Peaucelle et al., 2011; Braybrook and Jönsson, 2016). In addition, external physical forces affect plant development, such as heterogeneous soil densities altering root growth or flows of air, water, or gravity modulating the bending of branches and leaves (Moullia and Fournier, 2009). Inherited modifications of development over generations results in the evolution of plant morphology (Niklas, 1997). Development and evolution set the constraints for how the morphology of a plant arises, regardless of whether in a systematic, ecological, physiological, or genetic context (**Figure 1**).

Plant Morphology from the Perspective of Mathematics

In 1790, Johann Wolfgang von Goethe pioneered a perspective that transformed the way mathematicians think about plant morphology: the idea that the essence of plant morphology

is an underlying repetitive process of transformation (Goethe, 1790; Friedman and Diggle, 2011). The modern challenge that Goethe's paradigm presents is to quantitatively describe transformations resulting from differences in the underlying genetic, developmental, and environmental cues. From a mathematical perspective, the challenge is how to define shape descriptors to compare plant morphology with topological and geometrical techniques and how to integrate these shape descriptors into simulations of plant development.

Mathematics to Describe Plant Shape and Morphology

Several areas of mathematics can be used to extract quantitative measures of plant shape and morphology. One intuitive representation of the plant form relies on the use of skeletal descriptors that reduce the branching morphology of plants to a set of intersecting lines or curve segments, constituting a mathematical graph. These skeleton-based mathematical graphs can be derived from manual measurement (Godin et al., 1999; Watanabe et al., 2005) or imaging data (Bucksch et al., 2010; Aiteanu and Klein, 2014). Such skeletal descriptions can be used to derive quantitative measurements of lengths, diameters, and angles in tree crowns (Bucksch and Fleck, 2011; Raunonen et al., 2013; Seidel et al., 2015) and roots, at a single time point (Fitter, 1987; Danjon et al., 1999; Lobet et al., 2011; Galkovskyi et al., 2012) or over time to capture growth dynamics (Symonova et al., 2015). Having a skeletal description in place allows the definition of orders, in a biological and mathematical sense, to enable morphological analysis from a topological perspective (**Figure 2A**). Topological analyses can be used to compare shape characteristics independently of events that transform plant shape geometrically, providing a framework by which plant morphology can be modeled. The relationships between orders, such as degree of self-similarity (Prusinkiewicz, 2004) or self-nestedness (Godin and Ferraro, 2010) are used to quantitatively summarize patterns of plant morphology. Persistent homology (**Figure 2B**), an extension of Morse theory (Milnor, 1963), transforms a given plant shape gradually to define self-similarity (MacPherson and Schweinhart, 2012) and morphological properties (Edelsbrunner and Harer, 2010; Li et al., 2017) on the basis of topological event statistics. In the example in **Figure 2B**, topological

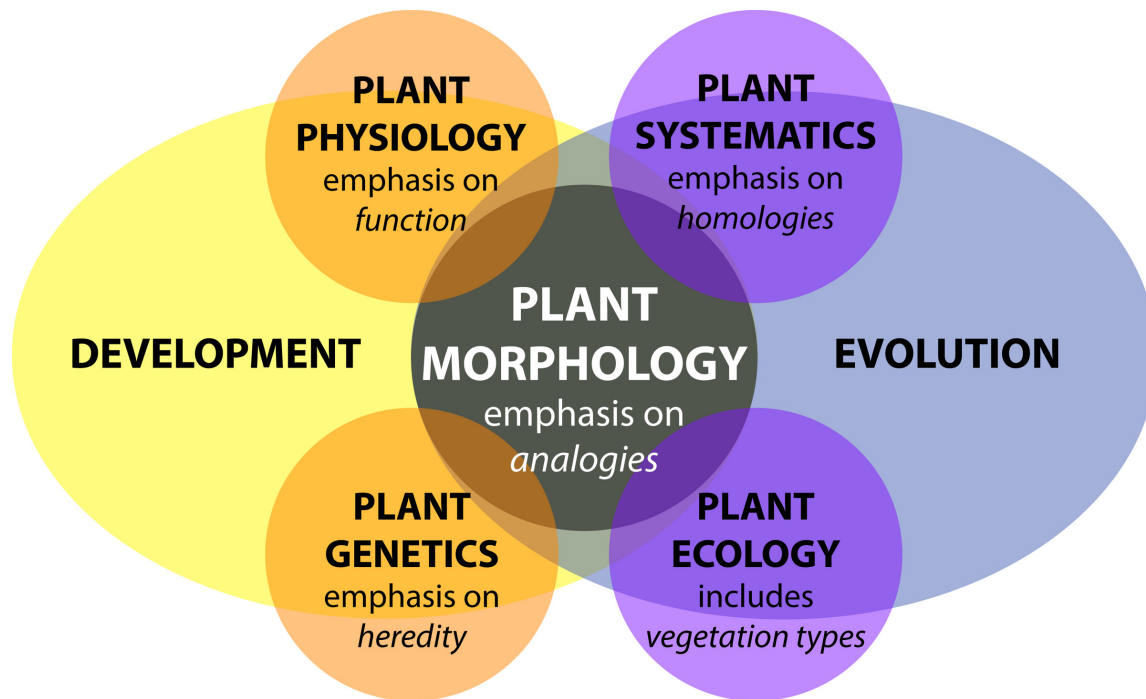


FIGURE 1 | Plant morphology from the perspective of biology. Adapted from Kaplan (2001). Plant morphology interfaces with all disciplines of plant biology—plant physiology, plant genetics, plant systematics, and plant ecology—influenced by both developmental and evolutionary forces.

events are represented by the geodesic distance at which branches are “born” and “die” along the length of the structure.

In the 1980s, David Kendall defined an elegant statistical framework to compare shapes (Kendall, 1984). His idea was to compare the outline of shapes in a transformation-invariant fashion. This concept infused rapidly as morphometrics into biology (Bookstein, 1997) and is increasingly carried out using machine vision techniques (Wilf et al., 2016). Kendall’s idea inspired the development of methods such as elliptical Fourier descriptors (Kuhl and Giardina, 1982) and new trends employing the Laplace Beltrami operator (Reuter et al., 2009), both relying on the spectral decompositions of shapes (Chitwood et al., 2012; Laga et al., 2014; Rellán-Álvarez et al., 2015). Beyond the organ level, such morphometric descriptors were used to analyze cellular expansion rates of rapidly deforming primordia into mature organ morphologies (Rolland-Lagan et al., 2003; Remmler and Rolland-Lagan, 2012; Das Gupta and Nath, 2015).

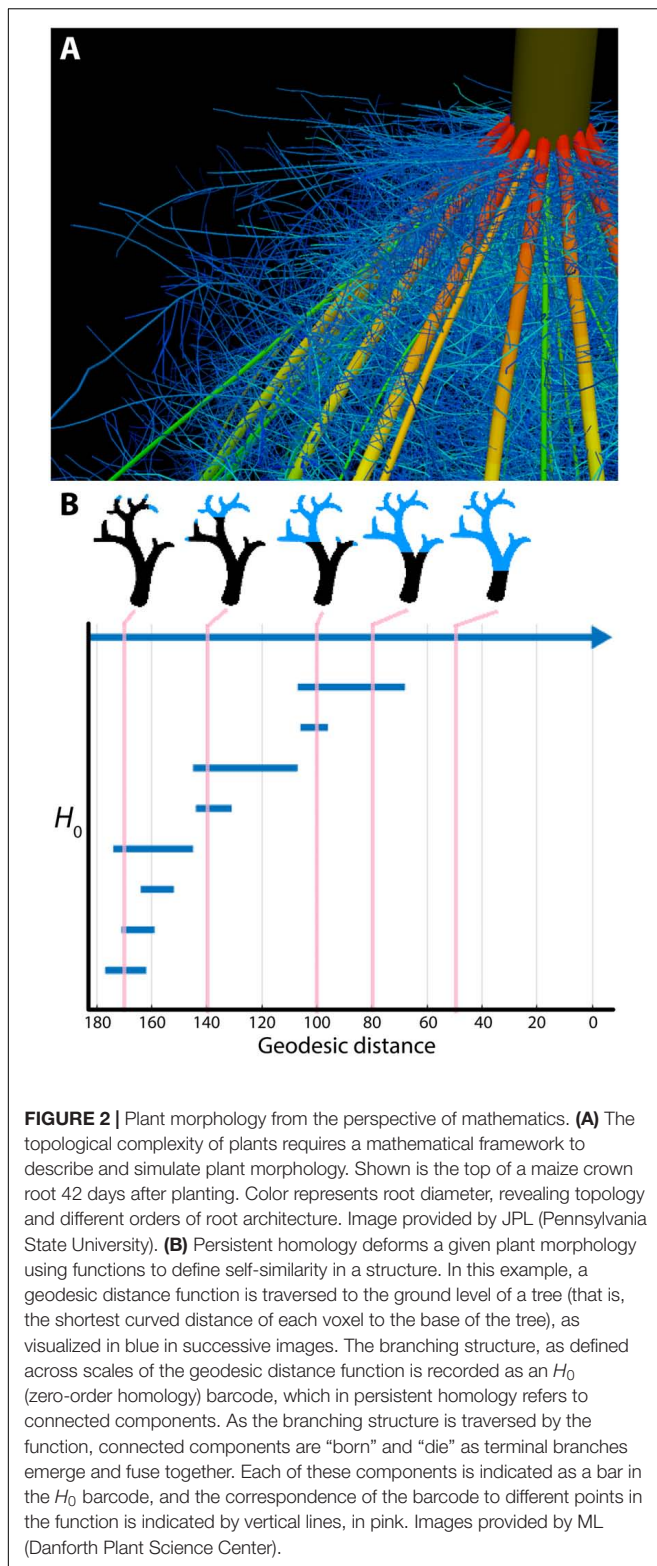
From a geometric perspective, developmental processes construct surfaces in a three-dimensional space. Yet, the embedding of developing plant morphologies into a three-dimensional space imposes constraints on plant forms. Awareness of such constraints has led to new interpretations of plant morphology (Prusinkiewicz and de Reuille, 2010; Bucksch et al., 2014b) that might provide avenues to explain symmetry and asymmetry in plant organs (e.g., Martinez et al., 2016) or the occurrence of plasticity as a morphological response to environmental changes (e.g.,

Royer et al., 2009; Palacio-López et al., 2015; Chitwood et al., 2016).

Mathematics to Simulate Plant Morphology

Computer simulations use principles from graph theory, such as graph rewriting, to model plant morphology over developmental time by successively augmenting a graph with vertices and edges as plant development unfolds. These rules unravel the differences between observed plant morphologies across plant species (Kurth, 1994; Prusinkiewicz et al., 2001; Barthélémy and Caraglio, 2007) and are capable of modeling fractal descriptions that reflect the repetitive and modular appearance of branching structures (Horn, 1971; Hallé, 1971, 1986). Recent developments in functional-structural modeling abstract the genetic mechanisms driving the developmental program of tree crown morphology into a computational framework (Runions et al., 2007; Palubicki et al., 2009; Palubicki, 2013). Similarly, functional-structural modeling techniques are utilized in root biology to simulate the efficiency of nutrient and water uptake following developmental programs (Nielsen et al., 1994; Dunbabin et al., 2013).

Alan Turing, a pioneering figure in 20th-century science, had a longstanding interest in phyllotactic patterns. Turing’s approach to the problem was twofold: first, a detailed geometrical analysis of the patterns (Turing, 1992), and second, an application of his theory of morphogenesis through local activation and long-range inhibition (Turing, 1952), which defined the first reaction-diffusion system for morphological modeling. Combining physical experiments with computer simulations, Douady and Coudert (1996) subsequently modeled a diffusible chemical signal



produced by a developing primordium that would inhibit the initiation of nearby primordia, successfully recapitulating known phyllotactic patterns in the shoot apical meristem (Bernasconi, 1994; Meinhardt, 2004; Jönsson et al., 2005; Nikolaev et al., 2007;

Hohm et al., 2010; Fujita et al., 2011), the number of floral organs (Kitazawa and Fujimoto, 2015), the regular spacing of root hairs (Meinhardt and Gierer, 1974), and the establishment of specific vascular patterns (Meinhardt, 1976).

EMERGING QUESTIONS AND BARRIERS IN THE MATHEMATICAL ANALYSIS OF PLANT MORPHOLOGY

A true synthesis of plant morphology, which comprehensively models observed biological phenomena and incorporates a mathematical perspective, remains elusive. In this section, we highlight current focuses in the study of plant morphology, including the technical limits of acquiring morphological data, phenotype prediction, responses of plants to the environment, models across biological scales, and the integration of complex phenomena, such as fluid dynamics, into plant morphological models.

Technological Limits to Acquiring Plant Morphological Data

There are several technological limits to acquiring plant morphological data that must be overcome to move this field forward. One such limitation is the acquisition of quantitative plant images. Many acquisition systems do not provide morphological data with measurable units. Approaches that rely on the reflection of waves from the plant surface can provide quantitative measurements for morphological analyses. Time of flight scanners, such as terrestrial laser scanning, overcome unitless measurement systems by recording the round-trip time of hundreds of thousands of laser beams sent at different angles from the scanner to the first plant surface within the line of sight (Vosselman and Maas, 2010) (Figure 3). Leveraging the speed of light allows calculation of the distance between a point on the plant surface and the laser scanner.

Laser scanning and the complementary, yet unitless, approach of stereovision both produce surface samples or point clouds as output. However, both approaches face algorithmic challenges encountered when plant parts occlude each other, since both rely on the reflection of waves from the plant surface (Bucksch, 2014). Radar provides another non-invasive technique to study individual tree and forest structures over wide areas. Radar pulses can either penetrate or reflect from foliage, depending on the selected wavelength (Kaasalainen et al., 2015). Most radar applications occur in forestry and are being operated from satellites or airplanes. Although more compact and agile systems are being developed for precision forestry above- and below-ground (Feng et al., 2016), their resolution is too low to acquire the detail in morphology needed to apply hierarchy or similarity oriented mathematical analysis strategies.

Image acquisition that resolves occlusions by penetrating plant tissue is possible with X-ray (Kumi et al., 2015) and magnetic resonance imaging (MRI; van Dusschoten et al., 2016). While both technologies resolve occlusions and can even penetrate soil, their limitation is the requirement of a closed imaging

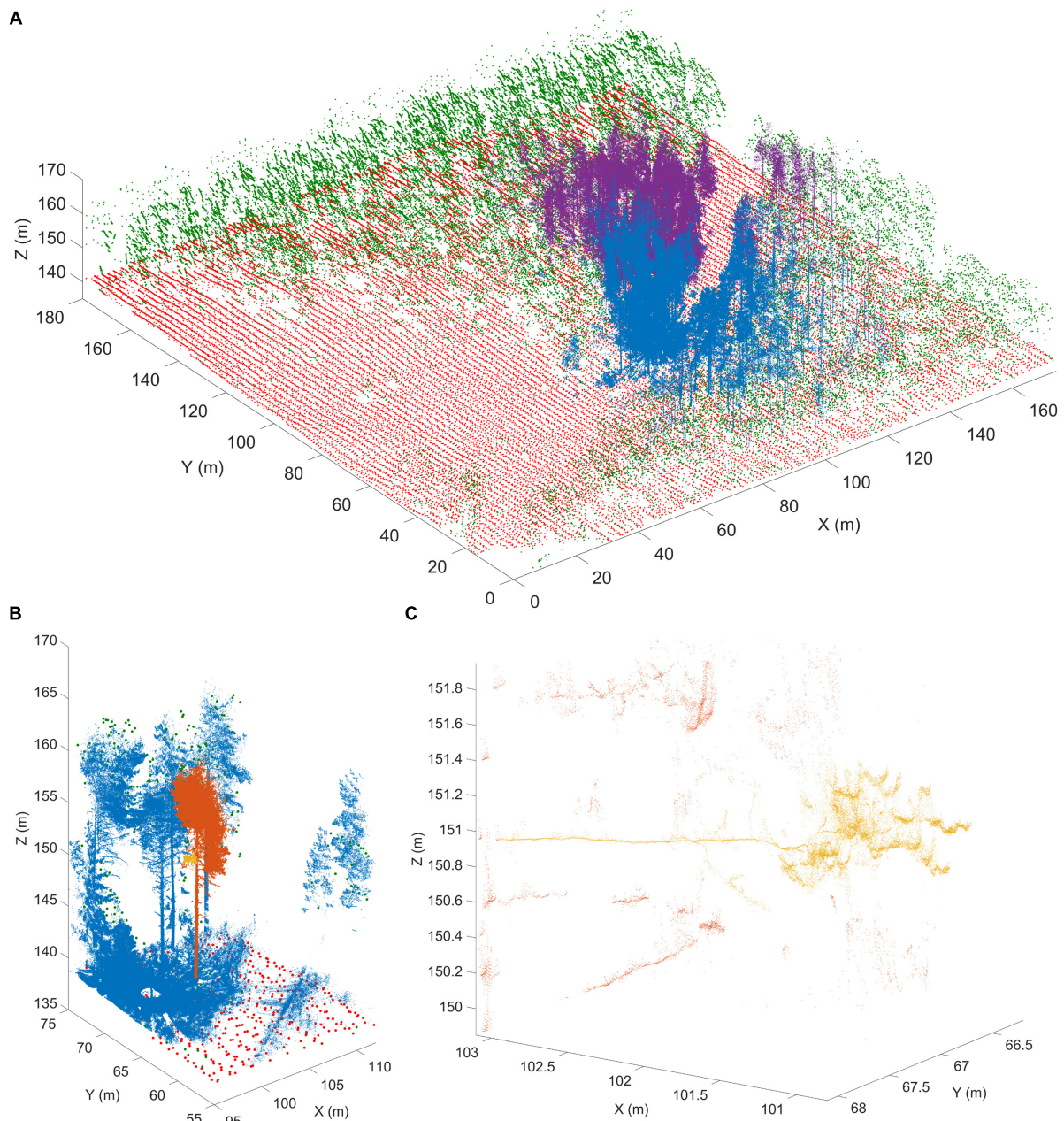


FIGURE 3 | Terrestrial laser scanning creates a point cloud reconstruction of a Finnish forest. **(A)** Structure of a boreal forest site in Finland as seen with airborne (ALS) and terrestrial (TLS) laser scanning point clouds. The red (ground) and green (above-ground) points are obtained from National Land Survey of Finland national ALS point clouds that cover hundreds of thousands of square kilometers with about 1 point per square meter resolution. The blue and magenta point clouds are results of two individual TLS measurements and have over 20 million points each within an area of about 500 m². TLS point density varies with range but can be thousands of points per square meter up to tens of meters away from the scanner position. **(B)** An excerpt from a single TLS point cloud (blue). The TLS point cloud is so dense that individual tree point clouds (orange) and parts from them (yellow) can be selected for detailed analysis. **(C)** A detail from a single TLS point cloud. Individual branches (yellow) 20 m above ground can be inspected from the point cloud with centimeter level resolution to estimate their length and thickness. Images provided by EP (Finnish Geospatial Research Institute in the National Land Survey of Finland). ALS data was obtained from the National Land Survey of Finland Topographic Database, 08/2012 (National Land Survey of Finland open data license, version 1.0).

volume. Thus, although useful for a wide array of purposes, MRI and X-ray are potentially destructive if applied to mature plant organs such as roots in the field or tree crowns that are larger than the imaging volume (Fiorani et al., 2012). Interior plant

anatomy can be imaged destructively using confocal microscopy and laser ablation (Figure 4) or nano- or micro-CT tomography techniques, that are limited to small pot volumes, to investigate the first days of plant growth.

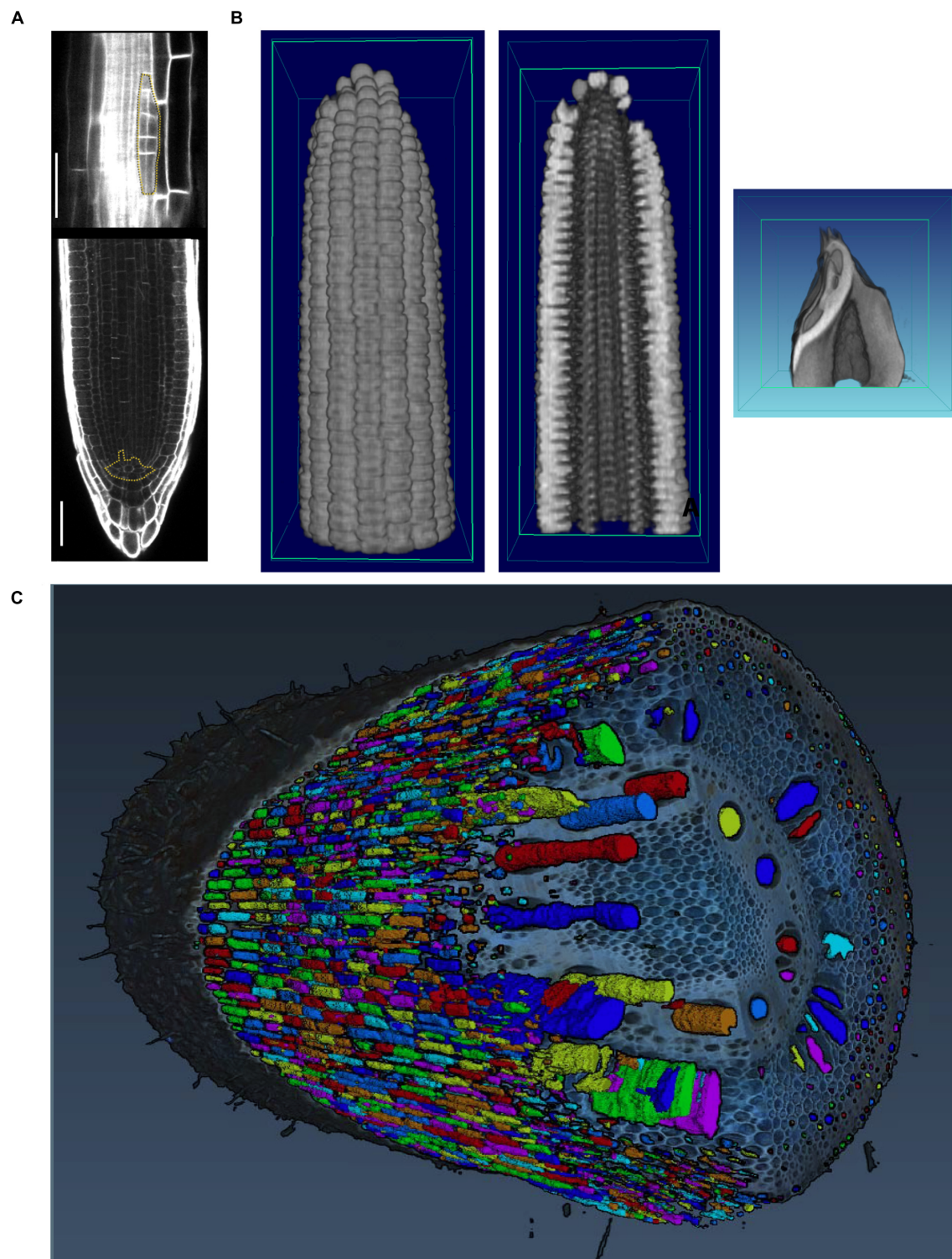


FIGURE 4 | Imaging techniques to capture plant morphology. **(A)** Confocal sections of an *Arabidopsis* root. The upper panel shows a new lateral root primordium at an early stage of development (highlighted in yellow). At regular intervals new roots branch from the primary root. The lower panel shows the primary root meristem and the stem cell niche (highlighted in yellow) from which all cells derive. Scale bars: 100 μm . Images provided by AM (Heidelberg University). **(B)** Computational tomographic (CT) x-ray sections through a reconstructed maize ear (left and middle) and kernel (right). Images provided by CT (Donald Danforth Plant Science Center). **(C)** Laser ablation tomography (LAT) image of a nodal root from a mature, field-grown maize plant, with color segmentation showing definition of cortical cells, aerenchyma lacunae, and metaxylem vessels. Image provided by JPL (Pennsylvania State University).

The Genetic Basis of Plant Morphology

One of the outstanding challenges in plant biology is to link the inheritance and activity of genes with observed phenotypes. This is particularly challenging for the study of plant morphology, as both the genetic landscape and morphospaces are complex: modeling each of these phenomena alone is difficult, let alone trying to model morphology as a result of genetic phenomena (Benfey and Mitchell-Olds, 2008; Lynch and Brown, 2012; Chitwood and Topp, 2015). Although classic examples exist in which plant morphology is radically altered by the effects of a few genes (Doebley, 2004; Clark et al., 2006; Kimura et al., 2008), many morphological traits have a polygenic basis (Langlade et al., 2005; Tian et al., 2011; Chitwood et al., 2013).

Quantitative trait locus (QTL) analyses can identify the polygenic basis for morphological traits that span scales from the cellular to the whole organ level. At the cellular level, root cortex cell number (Ron et al., 2013), the cellular basis of carpel size (Frary et al., 2000), and epidermal cell area and number (Tisé et al., 2008) have been analyzed. The genetic basis of cellular morphology ultimately affects organ morphology, and quantitative genetic bases for fruit shape (Paran and van der Knaap, 2007; Monforte et al., 2014), root morphology (Zhu et al., 2005; Clark et al., 2011; Topp et al., 2013; Zurek et al., 2015), shoot apical meristem shape (Leiboff et al., 2015; Thompson et al., 2015), leaf shape (Langlade et al., 2005; Ku et al., 2010; Tian et al., 2011; Chitwood et al., 2014a,b; Zhang et al., 2014; Truong et al., 2015), and tree branching (Kenis and Keulemans, 2007; Segura et al., 2009) have been described.

Natural variation in cell, tissue, or organ morphology ultimately impacts plant physiology, and vice versa. For example, formation of root cortical aerenchyma was linked to better plant growth under conditions of suboptimal availability of water and nutrients (Zhu et al., 2010; Postma and Lynch, 2011; Lynch, 2013), possibly because aerenchyma reduces the metabolic costs of soil exploration. Maize genotypes with greater root cortical cell size or reduced root cortical cell file number reach greater depths to increase water capture under drought conditions, possibly because those cellular traits reduce metabolic costs of root growth and maintenance (Chimungu et al., 2015). The control of root angle that results in greater water capture in rice as water tables recede was linked to the control of auxin distribution (Uga et al., 2013). Similarly, in shoots, natural variation can be exploited to find genetic loci that control shoot morphology, e.g., leaf erectness (Ku et al., 2010; Feng et al., 2011).

High-throughput phenotyping techniques are increasingly used to reveal the genetic basis of natural variation (Tester and Langridge, 2010). In doing so, phenotyping techniques complement classic approaches of reverse genetics and often lead to novel insights, even in a well-studied species like *Arabidopsis thaliana*. Phenotyping techniques have revealed a genetic basis for dynamic processes such as root growth (Slovak et al., 2014) and traits that determine plant height (Yang et al., 2014). Similarly, high-resolution sampling of root gravitropism has led to an unprecedented understanding of the dynamics of the

genetic basis of plasticity (Miller et al., 2007; Brooks et al., 2010; Spalding and Miller, 2013).

The Environmental Basis of Plant Morphology

Phenotypic plasticity is defined as the ability of one genotype to produce different phenotypes based on environmental differences (Bradshaw, 1965; DeWitt and Scheiner, 2004) and adds to the phenotypic complexity created by genetics and development. Trait variation in response to the environment has been analyzed classically using 'reaction norms,' where the phenotypic value of a certain trait is plotted for two different environments (Woltereck, 1909). If the trait is not plastic, the slope of the line connecting the points will be zero; if the reaction norm varies across the environment the trait is plastic and the slope of the reaction norm line will be a measure of the plasticity. As most of the responses of plants to their environment are non-linear, more insight into phenotypic plasticity can be obtained by analyzing dose-response curves or dose-response surfaces (Mitscherlich, 1909; Poorter et al., 2010).

Seminal work by Clausen et al. (1941) demonstrated using several clonal species in a series of reciprocal transplants that, although heredity exerts the most measureable effects on plant morphology, environment is also a major source of phenotypic variability. Research continues to explore the range of phenotypic variation expressed by a given genotype in the context of different environments, which has important implications for many fields, including conservation, evolution, and agriculture (Nicotra et al., 2010; DeWitt, 2016). Many studies examine phenotypes across latitudinal or altitudinal gradients, or other environmental clines, to characterize the range of possible variation and its relationship to the process of local adaptation (Cordell et al., 1998; Díaz et al., 2016).

Below-ground, plants encounter diverse sources of environmental variability, including water availability, soil chemistry, and physical properties like soil hardness and movement. These factors vary between individual plants (Razak et al., 2013) and within an individual root system, where plants respond at spatio-temporal levels to very different granularity (Drew, 1975; Robbins and Dinnyen, 2015). Plasticity at a micro-environmental scale has been linked to developmental and molecular mechanisms (Bao et al., 2014). The scientific challenge here is to integrate these effects at a whole root system level and use different scales of information to understand the optimal acquisition in resource limited conditions (Rellán-Álvarez et al., 2016) (Figure 5).

Integrating Models from Different Levels of Organization

Since it is extremely difficult to examine complex interdependent processes occurring at multiple spatio-temporal scales, mathematical modeling can be used as a complementary tool with which to disentangle component processes and investigate how their coupling may lead to emergent patterns at a systems level (Hamant et al., 2008; Band and King, 2012; Band et al., 2012; Jensen and Fozard, 2015). To be practical, a

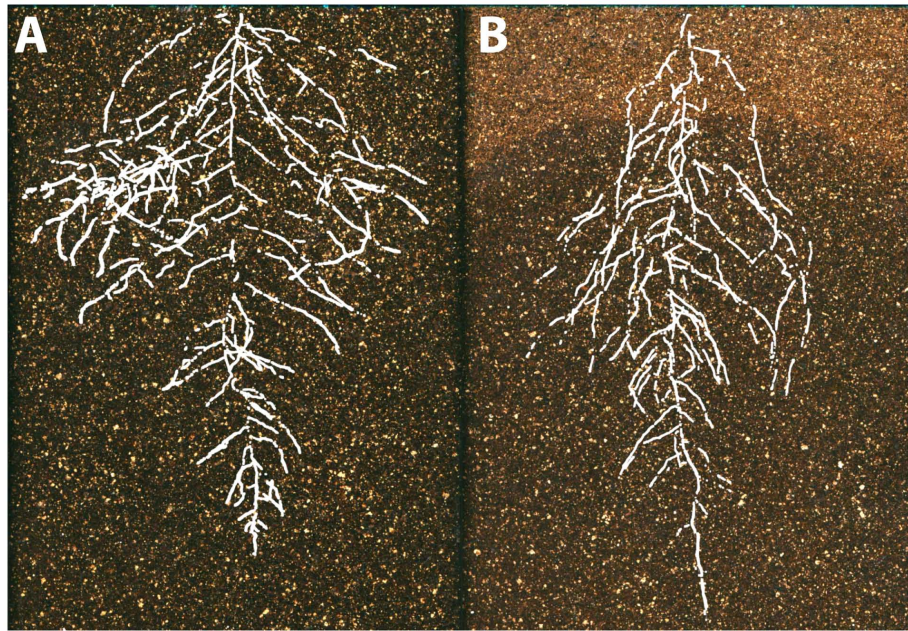


FIGURE 5 | The environmental basis of plant morphology. Root system architecture of *Arabidopsis* Col-0 plants expressing ProUBQ10:LUC2o growing in **(A)** control and **(B)** water-deficient conditions using the GLO-Roots system (Rellán-Álvarez et al., 2015). Images provided by RR-Á (Laboratorio Nacional de Genómica para la Biodiversidad, CINVESTAV) are a composite of a video originally published (Rellán-Álvarez et al., 2015).

multiscale model should generate well-constrained predictions despite significant parameter uncertainty (Gutenkunst et al., 2007; Hofhuis et al., 2016). It is desirable that a multiscale model has certain modularity in its design such that individual modules are responsible for modeling specific spatial aspects of the system (Baldazzi et al., 2012). Imaging techniques can validate multiscale models (e.g., Willis et al., 2016) such that simulations can reliably guide experimental studies.

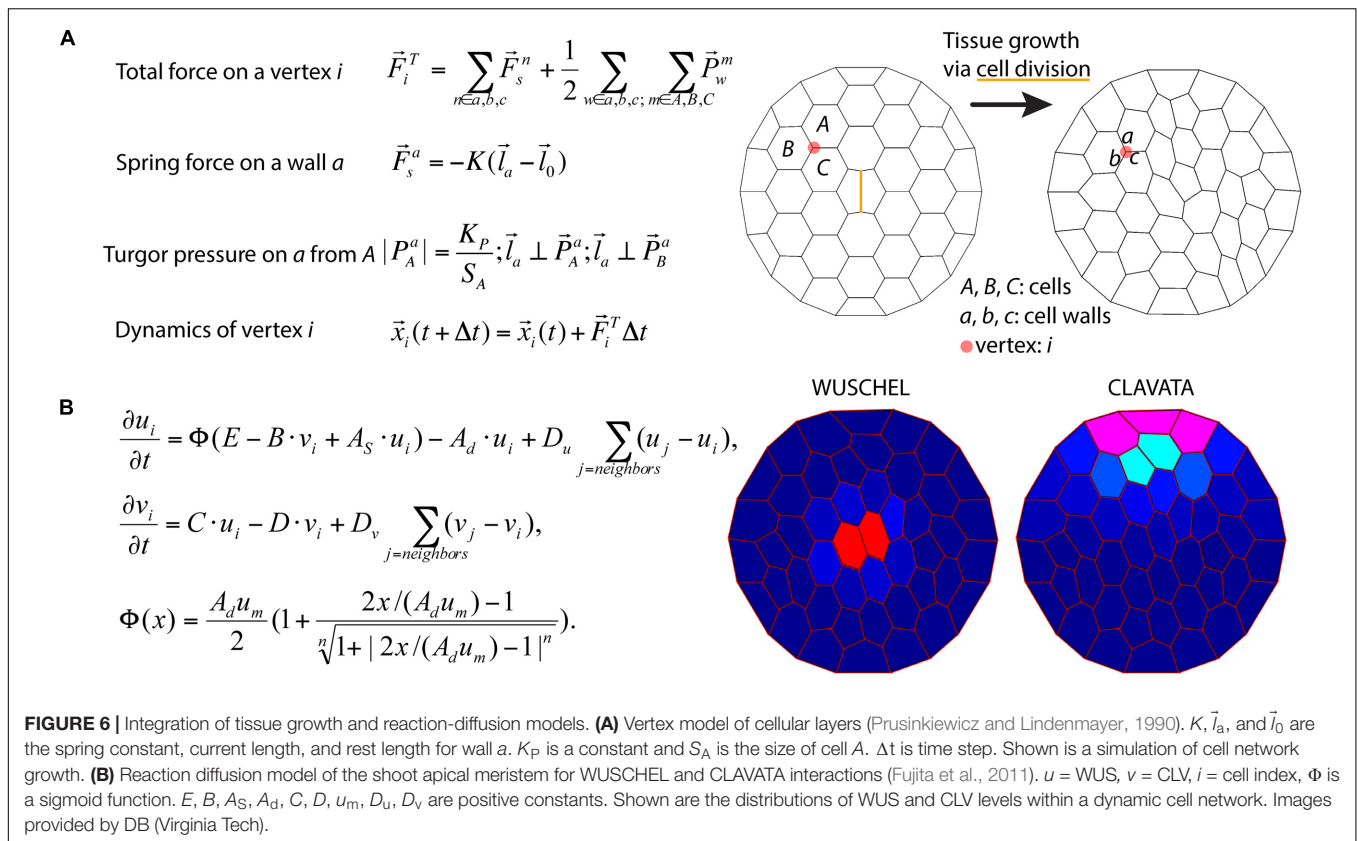
To illustrate the challenges of multi-scale modeling, we highlight an example that encompasses molecular and cellular scales. At the molecular scale, models can treat some biomolecules as diffusive, but others, such as membrane-bound receptors, can be spatially restricted (Battogtokh and Tyson, 2016). Separately, at the cellular scale, mathematical models describe dynamics of cell networks where the mechanical pressures exerted on the cell walls are important factors for cell growth and division (Jensen and Fozard, 2015) (**Figure 6A**). In models describing plant development in a two-dimensional cross-section geometry, cells are often modeled as polygons defined by walls between neighboring cells. The spatial position of a vertex, where the cell walls of three neighboring cells coalesce, is a convenient variable for mathematical modeling of the dynamics of cellular networks (Prusinkiewicz and Runions, 2012). A multiscale model can then be assembled by combining the molecular and cellular models. Mutations and deletions of the genes encoding the biomolecules can be modeled by changing parameters. By inspecting the effects of such modifications on the dynamics of the cellular networks, the relationship between genotypes and phenotypes can be predicted. For example, Fujita et al. (2011) model integrates the dynamics of

cell growth and division with the spatio-temporal dynamics of the proteins involved in stem cell regulation and simulates shoot apical meristem development in wild type and mutant plants (**Figure 6B**).

Modeling the Impact of Morphology on Plant Function

Quantitative measures of plant morphology are critical to understand function. Vogel (1989) was the first to provide quantitative data that showed how shape changes in leaves reduce drag or friction in air or water flows. He found that single broad leaves reconfigure at high flow velocities into cone shapes to reduce flutter and drag (**Figures 7A,B**). More recent work discovered that the cone shape is significantly more stable than other reconfigurations such as U-shapes (Miller et al., 2012). Subsequent experimental studies on broad leaves, compound leaves, and flowers also support rapid repositioning in response to strong currents as a general mechanism to reduce drag (Niklas, 1992; Ennos, 1997; Etnier and Vogel, 2000; Vogel, 2006) (**Figure 7C**). It is a combination of morphology and anatomy, and the resultant material properties, which lead to these optimal geometric re-configurations of shape.

From a functional perspective, it is highly plausible that leaf shape and surface-material properties alter the boundary layer of a fluid/gas over the leaf surface or enhance passive movement that can potentially augment gas and heat exchange. For example, it has been proposed that the broad leaves of some trees flutter for the purpose of convective and evaporative heat transfer (Thom, 1968; Grant, 1983). Any movement of the leaf relative to the



movement of the air or water may decrease the boundary layer and increase gas exchange, evaporation, and heat dissipation (Roden and Percy, 1993). Each of these parameters may be altered by the plant to improve the overall function of the leaf (Vogel, 2012).

The growth of the plant continuously modifies plant topology and geometry, which in turn changes the balance between organ demand and production. At the organismal scale, the 3D spatial distribution of plant organs is the main interface between the plant and its environment. For example, the 3D arrangement of branches impacts light interception and provides the support for different forms of fluxes (water, sugars) and signals (mechanical constraints, hormones) that control plant functioning and growth (Godin and Sinoquet, 2005).

MILESTONES IN EDUCATION AND OUTREACH TO ACCELERATE THE INFUSION OF MATH INTO THE PLANT SCIENCES

Mathematics and plant biology need to interact more closely to accelerate scientific progress. Opportunities to interact possibly involve cross-disciplinary training, workshops, meetings, and funding opportunities. In this section, we outline perspectives for enhancing the crossover between mathematics and plant biology.

Education

Mathematics has been likened to “biology’s next microscope,” because of the insights into an otherwise invisible world it has to offer. Conversely, biology has been described as “mathematics’ next physics,” stimulating novel mathematical approaches because of the hitherto unrealized phenomena that biology studies (Cohen, 2004). The scale of the needed interplay between mathematics and plant biology is enormous and may lead to new science disciplines at the interface of both: ranging from the cellular, tissue, organismal, and community levels to the global; touching upon genetic, transcriptional, proteomic, metabolite, and morphological data; studying the dynamic interactions of plants with the environment or the evolution of new forms over geologic time; and spanning quantification, statistics, and mechanistic mathematical models.

Research is becoming increasingly interdisciplinary, and undergraduate, graduate, and post-graduate groups are actively trying to bridge the gap between mathematics and biology skillsets. While many graduate programs have specialization tracks under the umbrella of mathematics or biology-specific programs, increasingly departments are forming specially designed graduate groups for mathematical/quantitative biology^{1,2} to strengthen the interface between both disciplines.

¹BioQuant at University of Heidelberg, <http://www.bioquant.uni-heidelberg.de> (retrieved February 28, 2017)

²Quantitative Biosciences at Georgia Tech in Atlanta, <http://qbios.gatech.edu> (retrieved February 28, 2017)

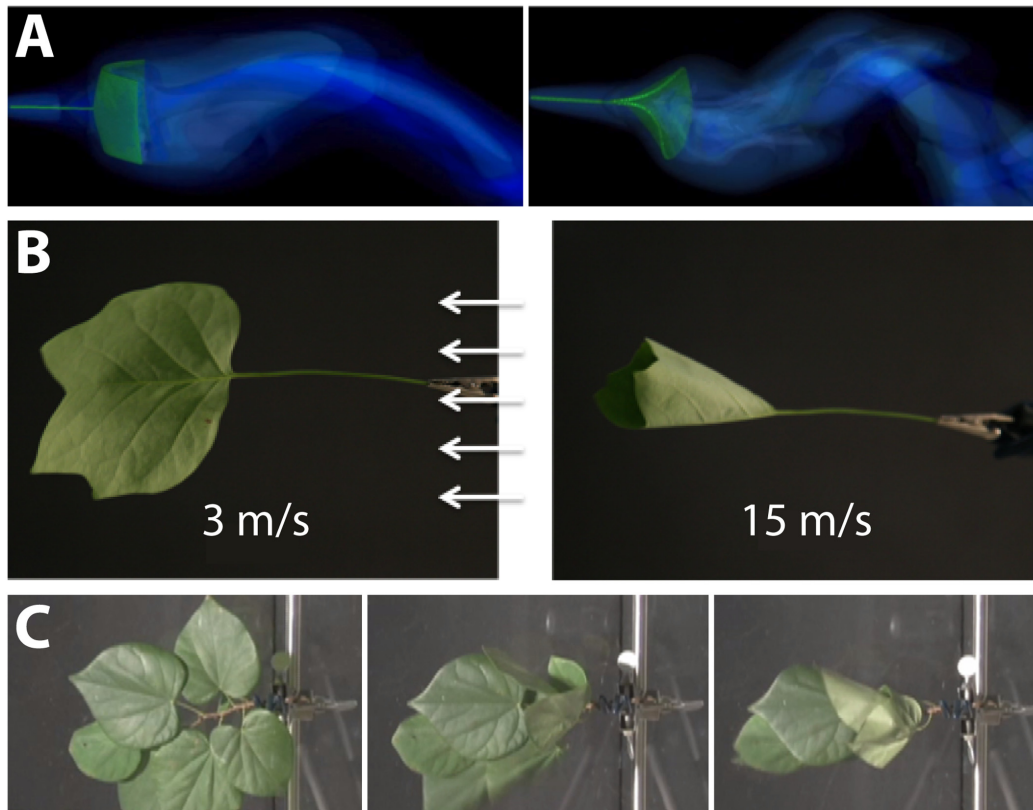


FIGURE 7 | Modeling the interaction between plant morphology and fluid dynamics. **(A)** 3D immersed boundary simulations of flow past a flexible rectangular sheet (left) and disk with a cut from the center to edge (right). Both structures are attached to a flexible petiole, and the flow is from left to right. The contours show the magnitude of vorticity (the rotation in the air). The circular disk reconfigures into a cone shape, similar to many broad leaves. **(B)** Reconfiguration of tulip poplar leaves in 3 m/s (left) and 15 m/s flow (right). The leaves typically flutter at lower wind speeds and reconfigure into stable cones at high wind speeds. **(C)** A cluster of redbud leaves in wind moving from right to left. The wind speed is increased from 3 m/s (left) to 6 m/s (middle) and 12 m/s (right). Note that the entire cluster reconfigures into a cone shape. This is different from the case of tulip poplars and maples where each leaf individually reconfigures into a conic shape. Images provided by LM (University of North Carolina, Chapel Hill, NC, United States).

This will necessitate team-teaching across disciplines to train the next generation of mathematical/computational plant scientists.

Public Outreach: Citizen Science and the Maker Movement

Citizen science, which is a method to make the general public aware of scientific problems and employ their help in solving them³, is an ideal platform to initiate a synthesis between plant biology and mathematics because of the relatively low cost and accessibility of each field. Arguably, using citizen science to collect plant morphological diversity has already been achieved, but has yet to be fully realized. In total, it is estimated that the herbaria of the world possess greater than 207 million voucher specimens⁴, representing the diverse lineages of land plants collected over their respective biogeographies over a timespan of centuries.

³For example, see the White Paper on Citizen Science for Europe, http://www.socientize.eu/sites/default/files/white-paper_0.pdf (retrieved May 29, 2016)

⁴List of herbaria, https://en.wikipedia.org/wiki/List_of_herbaria (retrieved May 29, 2016)

Digital documentation of the millions of vouchers held by the world's botanic gardens is actively underway, allowing for researchers and citizens alike to access and study for themselves the wealth of plant diversity across the globe and centuries (Smith et al., 2003; Corney et al., 2012; Ryan, 2013).

The developmental changes in plants responding to environmental variability and microclimatic changes over the course of a growing season can be analyzed by studying phenology. Citizen science projects such as the USA National Phenology Network⁵ or Earthwatch⁶ and associated programs such as My Tree Tracker⁷ document populations and individual plants over seasons and years, providing a distributed, decentralized network of scientific measurements to study the effects of climate change on plants.

⁵<https://www.usanpn.org/#> (retrieved May 29, 2016)

⁶<http://earthwatch.org/scientific-research/special-initiatives/urban-resiliency> (retrieved May 29, 2016)

⁷<http://www.mytreetracker.org/cwis438/websites/MyTreeTracker/About.php?WebSiteID=23> (retrieved May 29, 2016)



FIGURE 8 | Milestones to accelerate the infusion of math into the plant sciences. Group photo of the authors from the National Institute for Mathematical and Biological Synthesis (NIMBioS) meeting on plant morphological models (University of Tennessee, Knoxville, September 2–4, 2015) that inspired this manuscript. Workshops such as these, bringing mathematicians and plant biologists together, will be necessary to create a new synthesis of plant morphology.

Citizen science is also enabled by low-cost, specialized equipment. Whether programming a camera to automatically take pictures at specific times or automating a watering schedule for a garden, the maker movement—a do-it-yourself cultural phenomenon that intersects with hacker culture—focuses on building custom, programmable hardware, whether via electronics, robotics, 3D-printing, or time-honored skills such as metal- and woodworking. The focus on programming is especially relevant for integrating mathematical approaches with plant science experiments. The low-cost of single-board computers like Raspberry Pi, HummingBoard, or CubieBoard is a promising example of how to engage citizen scientists into the scientific process and enable technology solutions to specific questions.

Workshops and Funding Opportunities

Simply bringing mathematicians and plant biologists together to interact, to learn about new tools, approaches, and opportunities in each discipline is a major opportunity for further integration of these two disciplines and strengthen new disciplines at the interface of both. This white paper itself is a testament to the power of bringing mathematicians and biologists together, resulting from a National Institute for Mathematical and Biological Synthesis (NIMBioS) workshop titled “Morphological Plant Modeling: Unleashing Geometric and Topologic Potential within the Plant Sciences,” held at the University of Tennessee, Knoxville, September 2–4, 2015⁸ (Figure 8). Other mathematical institutes such as the Mathematical Biology Institute (MBI) at Ohio State University⁹, the Statistical and Applied Mathematical Sciences Institute (SAMS) in Research Triangle Park¹⁰, the Institute for Mathematics and Its Applications at

University of Minnesota¹¹, and the Centre for Plant Integrative Biology at the University of Nottingham¹² have also hosted workshops for mathematical and quantitative biologists from the undergraduate student to the faculty level.

There are efforts to unite biologists and mathematics through initiatives brought forth from The National Science Foundation, including Mathematical Biology Programs¹³ and the Joint DMS/NIGMS Initiative to Support Research at the Interface of the Biological and Mathematical Sciences¹⁴ (DMS/NIGMS). Outside of the Mathematics and Life Sciences Divisions, the Division of Physics houses a program on the Physics of Living Systems. Societies such as The Society for Mathematical Biology and the Society for Industrial and Applied Mathematics (SIAM) Life Science Activity Group¹⁵ are focused on the dissemination of research at the intersection of math and biology, creating many opportunities to present research and provide funding. We emphasize the importance that funding opportunities have had and will continue to have in the advancement of plant morphological modeling.

Open Science

Ultimately, mathematicians, computational scientists, and plant biology must unite at the level of jointly collecting data, analyzing it, and doing science together. Open and timely data sharing to benchmark code is a first step to unite these disciplines along with building professional interfaces to bridge

⁸http://www.nimbios.org/workshops/WS_plantmorph (retrieved May 29, 2016)

⁹<https://mbi.osu.edu/> (retrieved May 29, 2016)

¹⁰<http://www.samsi.info/> (retrieved May 29, 2016)

¹¹<https://www.ima.umn.edu/> (retrieved May 29, 2016)

¹²<https://www.cpib.ac.uk/outreach/cpib-summer-school/> (retrieved May 29, 2016)

¹³https://www.nsf.gov/funding/pgm_summ.jsp?pims_id=5690 (retrieved May 29, 2016)

¹⁴http://www.nsf.gov/funding/pgm_summ.jsp?pims_id=5300&org=DMS (retrieved May 29, 2016)

¹⁵<https://www.siam.org/activity/life-sciences/> (retrieved May 29, 2016)

between the disciplines (Bucksch et al., 2017; Pradal et al., 2017).

A number of platforms provide open, public access to datasets, figures, and code that can be shared, including Dryad¹⁶, Dataverse¹⁷, and Figshare¹⁸. Beyond the ability to share data is the question of open data formats and accessibility. For example, in remote sensing research it is unfortunately common that proprietary data formats are used, which prevents their use without specific software. This severely limits the utility and community building aspects of plant morphological research. Beyond datasets, making code openly available, citable, and user-friendly is a means to share methods to analyze data. Places to easily share code include web-based version controlled platforms like Bitbucket¹⁹ or Github²⁰ and software repositories like Sourceforge²¹. Furthermore, numerous academic Journals (e.g., Nature Methods, Applications in Plant Sciences, and Plant Methods) already accept publications that focus on methods and software to accelerate new scientific discovery (Pradal et al., 2013).

Meta-analysis datasets provide curated resources where numerous published and unpublished datasets related to a specific problem (or many problems) can be accessed by researchers²². The crucial element is that data is somehow reflective of universal plant morphological features, bridging the gap between programming languages and biology, as seen in the Root System Markup Language (Lobet et al., 2015) and OpenAlea (Pradal et al., 2008, 2015). Bisque is a versatile platform to store, organize, and analyze image data, providing simultaneously open access to data and analyses as well as the requisite computation (Kvilekval et al., 2010). CyVerse²³ (formerly iPlant) is a similar platform, on which academic users get 100 GB storage for free and can create analysis pipelines that can be shared and reused (Goff et al., 2011). For example, DIRT²⁴ is an automatic, high throughput computing platform (Bucksch et al., 2014a; Das et al., 2015) that the public can use hosted on CyVerse using the Texas Advanced Computing Center²⁵ (TACC) resources at UT Austin that robustly extracts root traits from digital images. The reproducibility of these complex computational experiments can be improved using scientific workflows that capture and automate the exact methodology followed by scientists (Cohen-Boulakia et al., 2017). We emphasize here the importance of adopting open science policies at the individual investigator and journal level to continue strengthening the interface between plant and mathematically driven sciences.

CONCLUSION: UNLEASHING GEOMETRIC AND TOPOLOGICAL POTENTIAL WITHIN THE PLANT SCIENCES

Plant morphology is a mystery from a molecular and quantification point of view. Hence, it fascinates both mathematical and plant biology researchers alike. As such, plant morphology holds the secret by which predetermined variations of organizational patterns emerge as a result of evolutionary, developmental, and environmental responses.

The persistent challenge at the intersection of plant biology and mathematical sciences might be the integration of measurements across different scales of the plant. We have to meet this challenge to derive and validate mathematical models that describe plants beyond the visual observable. Only then we will be able to modify plant morphology through molecular biology and breeding as means to develop needed agricultural outputs and sustainable environments for everybody.

Cross-disciplinary training of scientists, citizen science, and open science are inevitable first steps to develop the interface between mathematical-driven and plant biology-driven sciences. The result of these steps will be new disciplines, that will add to the spectrum of researchers in plant biology. Hence, to unleash the potential of geometric and topological approaches in the plant sciences, we need an interface familiar with both plants and mathematical approaches to meet the challenges posed by a future with uncertain natural resources as a consequence of climate change.

AUTHOR CONTRIBUTIONS

AB and DC conceived, wrote, and organized the manuscript. All authors contributed to writing the manuscript.

FUNDING

This work was assisted through participation in the *Morphological Plant Modeling: Unleashing geometric and topological potential within the plant sciences* Investigative Workshop at the National Institute for Mathematical and Biological Synthesis, sponsored by the National Science Foundation through NSF Award #DBI-1300426, with additional support from The University of Tennessee, Knoxville, Knoxville, TN, United States.

ACKNOWLEDGMENTS

The authors are grateful to the National Institute for Mathematical and Biological Synthesis (NIMBioS, University of Tennessee, Knoxville) for hosting and funding the workshop “Morphological Plant Modeling: Unleashing geometric and topological potential within the plant sciences” that inspired this manuscript. We thank the reviewers Evelyne Costes and Leo Marcelis for creative and open discussions.

¹⁶<http://datadryad.org/> (retrieved May 29, 2016)

¹⁷<http://dataverse.org/> (retrieved May 29, 2016)

¹⁸<https://figshare.com/> (retrieved May 29, 2016)

¹⁹<https://bitbucket.org/> (retrieved May 29, 2016)

²⁰<https://github.com/> (retrieved May 29, 2016)

²¹<https://sourceforge.net/> (retrieved May 29, 2016)

²²BAAD: a Biomass And Allometry Database for woody plants, <https://github.com/dfalster/baad> (retrieved May 29, 2016)

²³<http://www.cyverse.org/> (retrieved August 20, 2016)

²⁴<http://dirt.iplantcollaborative.org/> (retrieved August 20, 2016)

²⁵<https://www.tacc.utexas.edu/> (retrieved August 20, 2016)

REFERENCES

- Aiteanu, F., and Klein, R. (2014). Hybrid tree reconstruction from inhomogeneous point clouds. *Visual Comput.* 30, 763–771. doi: 10.1007/s00371-014-0977-7
- Baldazzi, V., Bertin, N., De Jong, H., and Génard, M. (2012). Towards multiscale plant models: integrating cellular networks. *Trends Plant Sci.* 17, 728–736. doi: 10.1016/j.tplants.2012.06.012
- Band, L. R., Fozard, J. A., Godin, C., Jensen, O. E., Pridmore, T., Bennett, M. J., et al. (2012). Multiscale systems analysis of root growth and development: modeling beyond the network and cellular scales. *Plant Cell* 24, 3892–3906. doi: 10.1105/tpc.112.101550
- Band, L. R., and King, J. R. (2012). Multiscale modelling of auxin transport in the plant-root elongation zone. *J. Math. Biol.* 65, 743–785. doi: 10.1007/s00285-011-0472-y
- Bao, Y., Aggarwal, P., Robbins, N. E., Sturrock, C. J., Thompson, M. C., Tan, H. Q., et al. (2014). Plant roots use a patterning mechanism to position lateral root branches toward available water. *Proc. Natl. Acad. Sci. U.S.A.* 111, 9319–9324. doi: 10.1073/pnas.1400966111
- Barthélémy, D., and Caraglio, Y. (2007). Plant architecture: a dynamic, multilevel and comprehensive approach to plant form, structure, and ontogeny. *Ann. Bot.* 99, 375–407. doi: 10.1093/aob/mcl260
- Battogtokh, D., and Tyson, J. J. (2016). A bistable switch mechanism for stem cell domain nucleation in the shoot apical meristem. *Front. Plant Sci.* 7:674. doi: 10.3389/fpls.2016.00674
- Benfey, P. N., and Mitchell-Olds, T. (2008). From genotype to phenotype: systems biology meets natural variation. *Science* 320, 495–497. doi: 10.1126/science.1153716
- Bernasconi, G. P. (1994). Reaction-diffusion model for phyllotaxis. *Physica D* 70, 90–99. doi: 10.1016/0167-2789(94)90058-2
- Bookstein, F. L. (1997). *Morphometric Tools for Landmark Data: Geometry and Biology*. New York, NY: Cambridge University Press.
- Bradshaw, A. D. (1965). Evolutionary significance of phenotypic plasticity in plants. *Adv. Genet.* 13, 115–155. doi: 10.1016/s0065-2660(08)60048-6
- Braybrook, S. A., and Jönsson, H. (2016). Shifting foundations: the mechanical cell wall and development. *Curr. Opin. Plant Biol.* 29, 115–120. doi: 10.1016/j.pbi.2015.12.009
- Brooks, T. L. D., Miller, N. D., and Spalding, E. P. (2010). Plasticity of Arabidopsis root gravitropism throughout a multidimensional condition space quantified by automated image analysis. *Plant Physiol.* 152, 206–216. doi: 10.1104/pp.109.145292
- Bucksch, A. (2014). A practical introduction to skeletons for the plant sciences. *Appl. Plant Sci.* 2:1400005. doi: 10.3732/apps.1400005
- Bucksch, A., Burridge, J., York, L. M., Das, A., Nord, E., Weitz, J. S., et al. (2014a). Image-based high-throughput field phenotyping of crop roots. *Plant Physiol.* 166, 470–486. doi: 10.1104/pp.114.243519
- Bucksch, A., Das, A., Schneider, H., Merchant, N., and Weitz, J. S. (2017). Overcoming the law of the hidden in cyberinfrastructures. *Trends Plant Sci.* 22, 117–123. doi: 10.1016/j.tplants.2016.11.014
- Bucksch, A., and Fleck, S. (2011). Automated detection of branch dimensions in woody skeletons of fruit tree canopies. *Photogramm. Eng. Remote Sens.* 77, 229–240. doi: 10.14358/PERS.77.3.229
- Bucksch, A., Lindenbergh, R., and Menenti, M. (2010). SkelTre. *Vis. Comput.* 26, 1283–1300. doi: 10.1007/s00371-010-0520-4
- Bucksch, A., Turk, G., and Weitz, J. S. (2014b). The fiber walk: a model of tip-driven growth with lateral expansion. *PLoS ONE* 9:e85585. doi: 10.1371/journal.pone.0085585
- Chimungu, J. G., Maliro, M. F., Nalivata, P. C., Kanyama-Phiri, G., Brown, K. M., and Lynch, J. P. (2015). Utility of root cortical aerenchyma under water limited conditions in tropical maize (*Zea mays* L.). *Field Crops Res.* 171, 86–98. doi: 10.1016/j.fcr.2014.10.009
- Chitwood, D. H., Headland, L. R., Ranjan, A., Martinez, C. C., Braybrook, S. A., Koenig, D. P., et al. (2012). Leaf asymmetry as a developmental constraint imposed by auxin-dependent phyllotactic patterning. *Plant Cell* 24, 2318–2327. doi: 10.1105/tpc.112.098798
- Chitwood, D. H., Kumar, R., Headland, L. R., Ranjan, A., Covington, M. F., Ichihashi, Y., et al. (2013). A quantitative genetic basis for leaf morphology in a set of precisely defined tomato introgression lines. *Plant Cell* 25, 2465–2481. doi: 10.1105/tpc.113.112391
- Chitwood, D. H., Ranjan, A., Kumar, R., Ichihashi, Y., Zumstein, K., Headland, L. R., et al. (2014a). Resolving distinct genetic regulators of tomato leaf shape within a heteroblastic and ontogenetic context. *Plant Cell* 26, 3616–3629. doi: 10.1105/tpc.114.130112
- Chitwood, D. H., Ranjan, A., Martinez, C. C., Headland, L. R., Thiem, T., Kumar, R., et al. (2014b). A modern ampelography: a genetic basis for leaf shape and venation patterning in grape. *Plant Physiol.* 164, 259–272. doi: 10.1104/pp.113.229708
- Chitwood, D. H., Rundell, S. M., Li, D. Y., Woodford, Q. L., Tommy, T. Y., Lopez, J. R., et al. (2016). Climate and developmental plasticity: interannual variability in grapevine leaf morphology. *Plant Physiol.* 170, 1480–1491. doi: 10.1104/pp.15.01825
- Chitwood, D. H., and Topp, C. N. (2015). Revealing plant cryptotypes: defining meaningful phenotypes among infinite traits. *Curr. Opin. Plant Biol.* 24, 54–60. doi: 10.1016/j.pbi.2015.01.009
- Clark, R. M., Wagler, T. N., Quijada, P., and Doebley, J. (2006). A distant upstream enhancer at the maize domestication gene *tb1* has pleiotropic effects on plant and inflorescent architecture. *Nat. Genet.* 38, 594–597. doi: 10.1038/ng1784
- Clark, R. T., MacCurdy, R. B., Jung, J. K., Shaff, J. E., McCouch, S. R., Aneshansley, D. J., et al. (2011). Three-dimensional root phenotyping with a novel imaging and software platform. *Plant Physiol.* 156, 455–465. doi: 10.1104/pp.110.169102
- Clausen, J., Keck, D. D., and Hiesey, W. M. (1941). Regional differentiation in plant species. *Am. Nat.* 75, 231–250. doi: 10.1086/280955
- Cohen, J. E. (2004). Mathematics is biology's next microscope, only better; biology is mathematics' next physics, only better. *PLoS Biol.* 2:e439. doi: 10.1371/journal.pbio.0020439
- Cohen-Boulakia, S., Belhajjame, K., Collin, O., Chopard, J., Froidevaux, C., Gagnard, A., et al. (2017). Scientific workflows for computational reproducibility in the life sciences: status, challenges and opportunities. *Fut. Gen. Comput. Syst.* (in press). doi: 10.1016/j.future.2017.01.012
- Cordell, S., Goldstein, G., Mueller-Dombois, D., Webb, D., and Vitousek, P. M. (1998). Physiological and morphological variation in *Metrosideros polymorpha*, a dominant Hawaiian tree species, along an altitudinal gradient: the role of phenotypic plasticity. *Oecologia* 113, 188–196. doi: 10.1007/s004420050367
- Corney, D., Clark, J. Y., Tang, H. L., and Wilkin, P. (2012). Automatic extraction of leaf characters from herbarium specimens. *Taxon* 61, 231–244.
- Danjon, F., Bert, D., Godin, C., and Trichet, P. (1999). Structural root architecture of 5-year-old *Pinus pinaster* measured by 3D digitising and analysed with AMAPmod. *Plant Soil* 217, 49–63. doi: 10.1023/A:1004686119796
- Das, A., Schneider, H., Burridge, J., Ascanio, A. K. M., Wojciechowski, T., Topp, C. N., et al. (2015). Digital imaging of root traits (DIRT): a high-throughput computing and collaboration platform for field-based root phenomics. *Plant Methods* 11:51. doi: 10.1186/s13007-015-0093-3
- Das Gupta, M., and Nath, U. (2015). Divergence in patterns of leaf growth polarity is associated with the expression divergence of miR396. *Plant Cell* 27, 2785–2799. doi: 10.1105/tpc.15.00196
- DeWitt, T. J. (2016). Expanding the phenotypic plasticity paradigm to broader views of trait space and ecological function. *Curr. Zool.* 62, 463–473. doi: 10.1093/cz/zow085
- DeWitt, T. J., and Scheiner, S. M. (eds) (2004). *Phenotypic Plasticity: Functional and Conceptual Approaches*. Oxford: Oxford University Press.
- Díaz, S., Kattge, J., Cornelissen, J. H., Wright, I. J., Lavorel, S., Dray, S., et al. (2016). The global spectrum of plant form and function. *Nature* 529, 167–171. doi: 10.1038/nature16489
- Doebley, J. (2004). The genetics of maize evolution. *Annu. Rev. Genet.* 38, 37–59. doi: 10.1146/annurev.genet.38.072902.092425
- Douady, S., and Coudert, Y. (1996). Phyllotaxis as a dynamical self organizing process part I: the spiral modes resulting from time-periodic iterations. *J. Theor. Biol.* 178, 255–273. doi: 10.1006/jtbi.1996.0024
- Drew, M. C. (1975). Comparison of the effects of a localised supply of phosphate, nitrate, ammonium and potassium on the growth of the seminal root system, and the shoot, in barley. *New Phytol.* 75, 479–490. doi: 10.1111/j.1469-8137.1975.tb01409.x
- Dunbabin, V. M., Postma, J. A., Schnepf, A., Pagès, L., Javaux, M., Wu, L., et al. (2013). Modelling root-soil interactions using three-dimensional models of root growth, architecture and function. *Plant Soil* 372, 93–124. doi: 10.1007/s11104-013-1769-y

- Edelsbrunner, H., and Harer, J. (2010). *Computational Topology: An Introduction*. Providence, RI: American Mathematical Society.
- Ennos, A. R. (1997). Wind as an ecological factor. *Trends Ecol. Evol.* 12, 108–111. doi: 10.1016/S0169-5347(96)10066-5
- Esau, K. (1960). *Anatomy of Seed Plants*. New York, NY: John Wiley & Sons Inc.
- Etnier, S. A., and Vogel, S. (2000). Reorientation of daffodil (*Narcissus*: Amaryllidaceae) flowers in wind: drag reduction and torsional flexibility. *Am. J. Bot.* 87, 29–32. doi: 10.2307/2656682
- Feng, T., Bradbury, P. J., Brown, P. J., Hung, H., Sun, Q., Flint-Garcia, S., et al. (2011). Genome-wide association study of leaf architecture in the maize nested association mapping population. *Nat. Genet.* 43, 159–162. doi: 10.1038/ng.746
- Feng, Z., Chen, Y., Hakala, T., and Hyyppä, J. (2016). “Range calibration of airborne profiling radar used in forest inventory,” in *Proceedings of the IEEE Geoscience and Remote Sensing Society*, Beijing.
- Fiorani, F., Rascher, U., Jahnke, S., and Schurr, U. (2012). Imaging plants dynamics in heterogenic environments. *Curr. Opin. Biotechnol.* 23, 227–235. doi: 10.1016/j.copbio.2011.12.010
- Fitter, A. H. (1987). An architectural approach to the comparative ecology of plant root systems. *New Phytol.* 106, 61–77. doi: 10.1111/j.1469-8137.1987.tb04683.x
- Frery, A., Nesbitt, T. C., Frery, A., Grandillo, S., Van Der Knaap, E., Cong, B., et al. (2000). fw2.2: a quantitative trait locus key to the evolution of tomato fruit size. *Science* 289, 85–88. doi: 10.1126/science.289.5476.85
- Friedman, W. E., and Diggle, P. K. (2011). Charles darwin and the origins of plant evolutionary developmental biology. *Plant Cell* 23, 1194–1207. doi: 10.1105/tpc.111.084244
- Fujita, H., Toyokura, K., Okada, K., and Kawaguchi, M. (2011). Reaction-diffusion pattern in shoot apical meristem of plants. *PLoS ONE* 6:e18243. doi: 10.1371/journal.pone.0018243
- Galkovskyi, T., Mileiko, Y., Bucksch, A., Moore, B., Symonova, O., Price, C. A., et al. (2012). GiA Roots: software for the high throughput analysis of plant root system architecture. *BMC Plant Biol.* 12:116. doi: 10.1186/1471-2229-12-116
- Godin, C., Costes, E., and Sinoquet, H. (1999). A method for describing plant architecture which integrates topology and geometry. *Ann. Bot.* 84, 343–357. doi: 10.1006/anbo.1999.0923
- Godin, C., and Ferraro, P. (2010). Quantifying the degree of self-nestedness of trees: application to the structural analysis of plants. *IEEE/ACM Trans. Comput. Biol. Bioinform.* 7, 688–703. doi: 10.1109/TCBB.2009.29
- Godin, C., and Sinoquet, H. (2005). Functional-structural plant modelling. *New Phytol.* 166, 705–708. doi: 10.1111/j.1469-8137.2005.01445.x
- Goethe, J. W. (1790). *Versuch die Metamorphose der Pflanzen zu erklären*. Gotha: Carl Wilhelm Ettinger.
- Goff, S. A., Vaughn, M., McKay, S., Lyons, E., Stapleton, A. E., Gessler, D., et al. (2011). The iPlant collaborative: cyberinfrastructure for plant biology. *Front. Plant Sci.* 2:34. doi: 10.3389/fpls.2011.00034
- Grant, R. H. (1983). The scaling of flow in vegetative structures. *Boundary Layer Meteorol.* 27, 171–184. doi: 10.1007/BF00239613
- Green, P. B. (1999). Expression of pattern in plants: combining molecular and calculus-based biophysical paradigms. *Am. J. Bot.* 86, 1059–1076. doi: 10.2307/2656967
- Gutenkunst, R. N., Waterfall, J. J., Casey, F. P., Brown, K. S., Myers, C. R., and Sethna, J. P. (2007). Universally sloppy parameter sensitivities in systems biology models. *PLoS Comput. Biol.* 3:e189. doi: 10.1371/journal.pcbi.0030189
- Hallé, F. (1971). Architecture and growth of tropical trees exemplified by the Euphorbiaceae. *Biotropica* 3, 56–62. doi: 10.2307/2989706
- Hallé, F. (1986). Modular growth in seed plants. *Philos. Trans. R. Soc. B* 313, 77–87. doi: 10.1098/rstb.1986.0026
- Hamant, O., Heisler, M. G., Jönsson, H., Krupinski, P., Uyttewaal, M., Bokov, P., et al. (2008). Developmental patterning by mechanical signals in *Arabidopsis*. *Science* 322, 1650–1655. doi: 10.1126/science.1165594
- Hofhuis, H., Moulton, D., Lessinnes, T., Routier-Kierzkowska, A. L., Bomphey, R. J., Mosca, G., et al. (2016). Morphomechanical innovation drives explosive seed dispersal. *Cell* 166, 222–233. doi: 10.1016/j.cell.2016.05.002
- Hohm, T., Zitzler, E., and Simon, R. (2010). A dynamic model for stem cell homeostasis and patterning in *Arabidopsis* meristems. *PLoS ONE* 5:e9189. doi: 10.1371/journal.pone.0009189
- Horn, H. S. (1971). *The Adaptive Geometry of Trees*, Vol. 3. Princeton, NJ: Princeton University Press.
- Jensen, O. E., and Fozard, J. A. (2015). Multiscale models in the biomechanics of plant growth. *Physiology* 30, 159–166. doi: 10.1152/physiol.00030.2014
- Jönsson, H., Heisler, M., Reddy, G. V., Agrawal, V., Gor, V., Shapiro, B. E., et al. (2005). Modeling the organization of the WUSCHEL expression domain in the shoot apical meristem. *Bioinformatics* 21, i232–i240. doi: 10.1093/bioinformatics/bti1036
- Kaasalainen, S., Holopainen, M., Karjalainen, M., Vastaranta, M., Kankare, V., Karila, K., et al. (2015). Combining lidar and synthetic aperture radar data to estimate forest biomass: status and prospects. *Forests* 6, 252–270. doi: 10.3390/f6010252
- Kaplan, D. R. (2001). The science of plant morphology: definition, history, and role in modern biology. *Am. J. Bot.* 88, 1711–1741. doi: 10.2307/3558347
- Kendall, D. G. (1984). Shape manifolds, procrustean metrics, and complex projective spaces. *Bull. Lond. Math. Soc.* 16, 81–121. doi: 10.1112/blms/16.2.81
- Kenis, K., and Keulemans, J. (2007). Study of tree architecture of apple (*Malus × domestica* Borkh.) by QTL analysis of growth traits. *Mol. Breed.* 19, 193–208. doi: 10.1007/s11032-006-9022-5
- Kimura, S., Koenig, D., Kang, J., Yoong, F. Y., and Sinha, N. (2008). Natural variation in leaf morphology results from mutation of a novel KNOX gene. *Curr. Biol.* 18, 672–677. doi: 10.1016/j.cub.2008.04.008
- Kitazawa, M. S., and Fujimoto, K. (2015). A dynamical phyllotaxis model to determine floral organ number. *PLoS Comput. Biol.* 11:e1004145. doi: 10.1371/journal.pcbi.1004145
- Ku, L. X., Zhao, W. M., Zhang, J., Wu, L. C., Wang, C. L., Wang, P. A., et al. (2010). Quantitative trait loci mapping of leaf angle and leaf orientation value in maize (*Zea mays* L.). *Theor. Appl. Genet.* 121, 951–959. doi: 10.1007/s00122-010-1364-z
- Kuhl, F. P., and Giardina, C. R. (1982). Elliptic fourier features of a closed contour. *Comput. Graph. Image Process.* 18, 236–258. doi: 10.1016/0146-664X(82)90034-X
- Kumi, F., Hanping, M., Jianping, H., and Ullah, I. (2015). Review of applying X-ray computed tomography for imaging soil-root physical and biological processes. *Int. J. Agric. Biol. Eng.* 8, 1–14.
- Kurth, W. (1994). *Growth Grammar Interpreter Grogra 2.4-A Software Tool for the 3-Dimensional Interpretation of Stochastic, Sensitive Growth Grammars in the Context of Plant Modelling*. Göttingen: Forschungszentrum Waldökosysteme der Universität Göttingen.
- Kvilekval, K., Fedorov, D., Obara, B., Singh, A., and Manjunath, B. S. (2010). Bisque: a platform for bioimage analysis and management. *Bioinformatics* 26, 544–552. doi: 10.1093/bioinformatics/btp699
- Laga, H., Kurtek, S., Srivastava, A., and Miklavcic, S. J. (2014). Landmark-free statistical analysis of the shape of plant leaves. *J. Theor. Biol.* 363, 41–52. doi: 10.1016/j.jtbi.2014.07.036
- Langlade, N. B., Feng, X., Dransfield, T., Copsey, L., Hanna, A. I., Thébaud, C., et al. (2005). Evolution through genetically controlled allometry space. *Proc. Natl. Acad. Sci. U.S.A.* 102, 10221–10226. doi: 10.1073/pnas.0504210102
- Leiboff, S., Li, X., Hu, H. C., Todt, N., Yang, J., Li, X., et al. (2015). Genetic control of morphometric diversity in the maize shoot apical meristem. *Nat. Commun.* 6:8974. doi: 10.1038/ncomms9974
- Li, M., Duncan, K., Topp, C. N., and Chitwood, D. H. (2017). Persistent homology and the branching topologies of plants. *Am. J. Bot.* 104, 349–353. doi: 10.3732/ajb.1700046
- Lobet, G., Pagès, L., and Draye, X. (2011). A novel image-analysis toolbox enabling quantitative analysis of root system architecture. *Plant Physiol.* 157, 29–39. doi: 10.1104/pp.111.179895
- Lobet, G., Pound, M. P., Diener, J., Pradal, C., Draye, X., Godin, C., et al. (2015). Root system markup language: toward a unified root architecture description language. *Plant Physiol.* 167, 617–627. doi: 10.1104/pp.114.253625
- Lynch, J. P. (2013). Steep, cheap and deep: an ideotype to optimize water and N acquisition by maize root systems. *Ann. Bot.* 112, 347–357. doi: 10.1093/aob/mcs293
- Lynch, J. P., and Brown, K. M. (2012). New roots for agriculture: exploiting the root phenome. *Philos. Trans. R. Soc. B* 367, 1598–1604. doi: 10.1098/rstb.2011.0243
- MacPherson, R., and Schweinhart, B. (2012). Measuring shape with topology. *J. Math. Phys.* 53, 073516. doi: 10.1063/1.4737391
- Martinez, C. C., Chitwood, D. H., Smith, R. S., and Sinha, N. R. (2016). Left-right leaf asymmetry in decussate and distichous phyllotactic systems. *Philos. Trans. R. Soc. Lond. B Biol. Sci.* 371:20150412. doi: 10.1101/043869

- Mayr, E. (1981). Biological classification: toward a synthesis of opposing methodologies. *Science* 214, 510–516. doi: 10.1126/science.214.4520.510
- Meinhardt, H. (1976). Morphogenesis of lines and nets. *Differentiation* 6, 117–123. doi: 10.1111/j.1432-0436.1976.tb01478.x
- Meinhardt, H. (2004). Out-of-phase oscillations and traveling waves with unusual properties: the use of three-component systems in biology. *Physica D* 199, 264–277. doi: 10.1016/j.physd.2004.08.018
- Meinhardt, H., and Gierer, A. (1974). Applications of a theory of biological pattern formation based on lateral inhibition. *J. Cell Sci.* 15, 321–346.
- Miller, L. A., Santhanakrishnan, A., Jones, S., Hamlet, C., Mertens, K., and Zhu, L. (2012). Reconfiguration and the reduction of vortex-induced vibrations in broad leaves. *J. Exp. Biol.* 215, 2716–2727. doi: 10.1242/jeb.064501
- Miller, N. D., Parks, B. M., and Spalding, E. P. (2007). Computer-vision analysis of seedling responses to light and gravity. *Plant J.* 52, 374–381. doi: 10.1111/j.1365-3113X.2007.03237.x
- Milnor, J. W. (1963). *Morse Theory*. Princeton: Princeton University Press.
- Mitscherlich, E. A. (1909). Das gesetz des minimums und das gesetz des abnehmenden bodenertrages. *Landw. Jahrb.* 38, 537–552.
- Monforte, A. J., Diaz, A. I., Caño-Delgado, A., and van der Knaap, E. (2014). The genetic basis of fruit morphology in horticultural crops: lessons from tomato and melon. *J. Exp. Bot.* 65, 4625–4637. doi: 10.1093/jxb/eru017
- Moullia, B., and Fournier, M. (2009). The power and control of gravitropic movements in plants: a biomechanical and systems biology view. *J. Exp. Bot.* 60, 461–486. doi: 10.1093/jxb/ern341
- Nicotra, A. B., Atkin, O. K., Bonser, S. P., Davidson, A. M., Finnegan, E. J., Mathesius, U., et al. (2010). Plant phenotypic plasticity in a changing climate. *Trends Plant Sci.* 15, 684–692. doi: 10.1016/j.tplants.2010.09.008
- Nielsen, K. L., Lynch, J. P., Jablonsky, A. G., and Curtis, P. S. (1994). Carbon cost of root systems: an architectural approach. *Plant Soil* 165, 161–169. doi: 10.1007/BF00009972
- Niklas, K. J. (1992). *Plant Biomechanics: An Engineering Approach to Plant form and Function*. Chicago, IL: University of Chicago Press.
- Niklas, K. J. (1994). *Plant Allometry: The Scaling of form and Process*. Chicago, IL: University of Chicago Press.
- Niklas, K. J. (1997). *The Evolutionary Biology of Plants*. Chicago, IL: University of Chicago Press.
- Nikolaev, S. V., Penenko, A. V., Lavreha, V. V., Mjolsness, E. D., and Kolchanov, N. A. (2007). A model study of the role of proteins CLV1, CLV2, CLV3, and WUS in regulation of the structure of the shoot apical meristem. *Russ. J. Dev. Biol.* 38, 383–388. doi: 10.1134/S1062360407060069
- Palacio-López, K., Beckage, B., Scheiner, S., and Molofsky, J. (2015). The ubiquity of phenotypic plasticity in plants: a synthesis. *Ecol. Evol.* 5, 3389–3400. doi: 10.1002/ece3.1603
- Palubicki, W. (2013). *A Computational Study of Tree Architecture*. Ph.D. dissertation, University of Calgary, Calgary, AB.
- Palubicki, W., Horel, K., Longay, S., Runions, A., Lane, B., Mich, R., et al. (2009). Self-organizing tree models for image synthesis. *ACM Trans. Graph.* 28, 58. doi: 10.1145/1531326.1531364
- Paran, I., and van der Knaap, E. (2007). Genetic and molecular regulation of fruit and plant domestication traits in tomato and pepper. *J. Exp. Bot.* 58, 3841–3852. doi: 10.1093/jxb/erm257
- Peaucelle, A., Braybrook, S. A., Le Guillou, L., Bron, E., Kuhlemeier, C., and Höfte, H. (2011). Pectin-induced changes in cell wall mechanics underlie organ initiation in Arabidopsis. *Curr. Biol.* 21, 1720–1726. doi: 10.1016/j.cub.2011.08.057
- Poorter, H., Niinemets, Ü., Walter, A., Fiorani, F., and Schurr, U. (2010). A method to construct dose–response curves for a wide range of environmental factors and plant traits by means of a meta-analysis of phenotypic data. *J. Exp. Bot.* 61, 2043–2055. doi: 10.1093/jxb/erp358
- Postma, J. A., and Lynch, J. P. (2011). Root cortical aerenchyma enhances the growth of maize on soils with suboptimal availability of nitrogen, phosphorus, and potassium. *Plant Physiol.* 156, 1190–1201. doi: 10.1104/pp.111.175489
- Pradal, C., Artzet, S., Chopard, J., Dupuis, D., Fournier, C., Mielewicz, M., et al. (2017). InfraPhenoGrid: a scientific workflow infrastructure for plant phenomics on the grid. *Fut. Gen. Comput. Syst.* 67, 341–353. doi: 10.1016/j.future.2016.06.002
- Pradal, C., Dufour-Kowalski, S., Boudon, F., Fournier, C., and Godin, C. (2008). OpenAlea: a visual programming and component-based software platform for plant modelling. *Funct. Plant Biol.* 35, 751–760. doi: 10.1071/FP08084
- Pradal, C., Fournier, C., Valduriez, P., and Cohen-Boulakia, S. (2015). “OpenAlea: scientific workflows combining data analysis and simulation,” in *Proceedings of the 27th International Conference on Scientific and Statistical Database Management (SSDBM '15)*, (New York, NY: ACM), doi: 10.1145/2791347.2791365
- Pradal, C., Varoquaux, G., and Langtangen, H. P. (2013). Publishing scientific software matters. *J. Comput. Sci.* 4, 311–312. doi: 10.1111/j.1467-8519.2009.01723.x
- Prusinkiewicz, P. (2004). “Self-similarity in plants: integrating mathematical and biological perspectives,” in *Thinking in Patterns: Fractals and Related Phenomena in Nature*, ed. M. Novak (Singapore: World Scientific), 103–118.
- Prusinkiewicz, P., and de Reuille, P. B. (2010). Constraints of space in plant development. *J. Exp. Bot.* 61, 2117–2129. doi: 10.1093/jxb/erq081
- Prusinkiewicz, P., and Lindenmayer, A. (1990). *The Algorithmic Beauty of Plants*. New York, NY: Springer Science & Business Media.
- Prusinkiewicz, P., Mündermann, L., Karwowski, R., and Lane, B. (2001). “The use of positional information in the modeling of plants,” in *Proceedings of the 28th Annual Conference on Computer Graphics and Interactive Techniques*, (New York, NY: ACM), 289–300.
- Prusinkiewicz, P., and Runions, A. (2012). Computational models of plant development and form. *New Phytol.* 193, 549–569. doi: 10.1111/j.1469-8137.2011.04009.x
- Raumonen, P., Kaasalainen, M., Åkerblom, M., Kaasalainen, S., Kaartinen, H., Vastaranta, M., et al. (2013). Fast automatic precision tree models from terrestrial laser scanner data. *Remote Sens.* 5, 491–520. doi: 10.3390/rs5020491
- Razak, K. A., Bucksch, A., Damen, M., van Westen, C., Straatsma, M., and de Jong, S. (2013). “Characterizing tree growth anomaly induced by landslides using LiDAR,” in *Landslide Science and Practice: Landslide Inventory, Susceptibility and Hazard Zoning*, eds C. Margottini, P. Canuti, and K. Sassa (Berlin: Springer), 235–241.
- Relán-Álvarez, R., Lobet, G., and Dinneny, J. R. (2016). Environmental control of root system biology. *Annu. Rev. Plant Biol.* 67, 619–642. doi: 10.1146/annurev-arplant-043015-111848
- Relán-Álvarez, R., Lobet, G., Lindner, H., Pradier, P. L., Sebastian, J., Yee, M. C., et al. (2015). GLO-Roots: an imaging platform enabling multidimensional characterization of soil-grown root systems. *Elife* 4:e07597. doi: 10.7554/eLife.07597
- Remmler, L., and Rolland-Lagan, A. G. (2012). Computational method for quantifying growth patterns at the adaxial leaf surface in three dimensions. *Plant Physiol.* 159, 27–39. doi: 10.1104/pp.112.194662
- Reuter, M., Biasotti, S., Giorgi, D., Patané, G., and Spagnuolo, M. (2009). Discrete Laplace–Beltrami operators for shape analysis and segmentation. *Comput. Graph.* 33, 381–390. doi: 10.1016/j.cag.2009.03.005
- Robbins, N. E., and Dinneny, J. R. (2015). The diving root: moisture-driven responses of roots at the micro- and macro-scale. *J. Exp. Bot.* 66, 2145–2154. doi: 10.1093/jxb/eru496
- Roden, J. S., and Pearcy, R. W. (1993). Effect of leaf flutter on the light environment of poplars. *Oecologia* 93, 201–207. doi: 10.1007/BF00317672
- Rolland-Lagan, A. G., Bangham, J. A., and Coen, E. (2003). Growth dynamics underlying petal shape and asymmetry. *Nature* 422, 161–163. doi: 10.1038/nature01443
- Ron, M., Dorrity, M. W., de Lucas, M., Toal, T., Hernandez, R. I., Little, S. A., et al. (2013). Identification of novel loci regulating interspecific variation in root morphology and cellular development in tomato. *Plant Physiol.* 162, 755–768. doi: 10.1104/pp.113.217802
- Royer, D. L., Meyerson, L. A., Robertson, K. M., and Adams, J. M. (2009). Phenotypic plasticity of leaf shape along a temperature gradient in *Acer rubrum*. *PLoS ONE* 4:e7653. doi: 10.1371/journal.pone.0007653
- Runions, A., Lane, B., and Prusinkiewicz, P. (2007). “Modeling trees with a space colonization algorithm,” in *Proceedings of the 2007 Eurographics Workshop on Natural Phenomena*, eds D. Ebert and S. Merillou (Geneva: The Eurographics Association), 63–70.
- Ryan, D. (2013). The global plants initiative celebrates its achievements and plans for the future. *Taxon* 62, 417–418. doi: 10.12705/622.26

- Segura, V., Durel, C. E., and Costes, E. (2009). Dissecting apple tree architecture into genetic, ontogenetic and environmental effects: QTL mapping. *Tree Genet. Genom.* 5, 165–179. doi: 10.1111/j.1469-8137.2007.02374.x
- Seidel, D., Schall, P., Gille, M., and Ammer, C. (2015). Relationship between tree growth and physical dimensions of *Fagus sylvatica* crowns assessed from terrestrial laser scanning. *iForest* 8, 735–742. doi: 10.3832/for1566-008
- Slovak, R., Göschl, C., Su, X., Shimotani, K., Shiina, T., and Busch, W. (2014). A scalable open-source pipeline for large-scale root phenotyping of *Arabidopsis*. *Plant Cell* 26, 2390–2403. doi: 10.1105/tpc.114.124032
- Smith, G. F., Steenkamp, Y., Klopfer, R. R., Siebert, S. J., and Arnold, T. H. (2003). The price of collecting life. *Nature* 422, 375–376. doi: 10.1038/422375a
- Spalding, E. P., and Miller, N. D. (2013). Image analysis is driving a renaissance in growth measurement. *Curr. Opin. Plant Biol.* 16, 100–104. doi: 10.1016/j.pbi.2013.01.001
- Steeves, T. A., and Sussex, I. M. (1989). *Patterns in Plant Development*. New York, NY: Cambridge University Press.
- Symonova, O., Topp, C. N., and Edelsbrunner, H. (2015). DynamicRoots: a software platform for the reconstruction and analysis of growing plant roots. *PLoS ONE* 10:e0127657. doi: 10.1371/journal.pone.0127657
- Tester, M., and Langridge, P. (2010). Breeding technologies to increase crop production in a changing world. *Science* 327, 818–822. doi: 10.1126/science.1183700
- Thom, A. S. (1968). The exchange of momentum, mass, and heat between an artificial leaf and the airflow in a wind-tunnel. *Q. J. R. Meteorol. Soc.* 94, 44–55. doi: 10.1002/qj.49709439906
- Thompson, A. M., Yu, J., Timmermans, M. C., Schnable, P., Crants, J. C., Scanlon, M. J., et al. (2015). Diversity of maize shoot apical meristem architecture and its relationship to plant morphology. *G3* 5, 819–827. doi: 10.1534/g3.115.017541
- Tian, F., Bradbury, P. J., Brown, P. J., Hung, H., Sun, Q., Flint-Garcia, S., et al. (2011). Genome-wide association study of leaf architecture in the maize nested association mapping population. *Nat. Genet.* 43, 159–162. doi: 10.1038/ng.746
- Tisné, S., Reymond, M., Vile, D., Fabre, J., Dauzat, M., Koornneef, M., et al. (2008). Combined genetic and modeling approaches reveal that epidermal cell area and number in leaves are controlled by leaf and plant developmental processes in *Arabidopsis*. *Plant Physiol.* 148, 1117–1127. doi: 10.1104/pp.108.124271
- Topp, C. N., Iyer-Pascuzzi, A. S., Anderson, J. T., Lee, C. R., Zurek, P. R., Symonova, O., et al. (2013). 3D phenotyping and quantitative trait locus mapping identify core regions of the rice genome controlling root architecture. *Proc. Natl. Acad. Sci. U.S.A.* 110, E1695–E1704. doi: 10.1073/pnas.1304354110
- Truong, S. K., McCormick, R. F., Rooney, W. L., and Mullet, J. E. (2015). Harnessing genetic variation in leaf angle to increase productivity of *Sorghum bicolor*. *Genetics* 201, 1229–1238. doi: 10.1534/genetics.115.178608
- Turing, A. M. (1952). The chemical basis of morphogenesis. *Philos. Trans. R. Soc. B* 237, 37–72. doi: 10.1098/rstb.1952.0012
- Turing, A. M. (1992). *Collected Works of AM Turing. Morphogenesis*. ed. P.T. Saunders. Amsterdam: North-Holland Publishing.
- Uga, Y., Sugimoto, K., Ogawa, S., Rane, J., Ishitani, M., Hara, N., et al. (2013). Control of root system architecture by DEEPER ROOTING 1 increases rice yield under drought conditions. *Nat. Genet.* 45, 1097–1102. doi: 10.1038/ng.2725
- van Dusschoten, D., Metzner, R., Kochs, J., Postma, J. A., Pflugfelder, D., Buehler, J., et al. (2016). Quantitative 3D analysis of plant roots growing in soil using magnetic resonance imaging. *Plant Physiol.* 170, 1176–1188. doi: 10.1104/pp.15.01388
- Vogel, S. (1989). Drag and reconfiguration of broad leaves in high winds. *J. Exp. Bot.* 40, 941–948. doi: 10.1093/jxb/40.8.941
- Vogel, S. (2006). Drag reduction by leaf aquaplaning in *Hexastylis* (Aristolochiaceae) and other plant species in floods. *J. North Am. Benthol. Soc.* 25, 2–8. doi: 10.1899/0887-3593(2006)25[2:DRBLAI]2.0.CO;2
- Vogel, S. (2012). *The Life of a Leaf*. Chicago, IL: The University of Chicago Press.
- Vosselman, G., and Maas, H. G. (eds) (2010). *Airborne and Terrestrial Laser Scanning*. Wick: Whittles Publishing.
- Watanabe, T., Hanan, J. S., Room, P. M., Hasegawa, T., Nakagawa, H., and Takahashi, W. (2005). Rice morphogenesis and plant architecture: measurement, specification and the reconstruction of structural development by 3D architectural modelling. *Ann. Bot.* 95, 1131–1143. doi: 10.1093/aob/mci136
- Wiens, J. J. (2000). “Coding morphological variation within species and higher taxa for phylogenetic analysis,” in *Phylogenetic Analysis of Morphological Data*, ed. J. J. Wiens (Washington, DC: Smithsonian Institution Press), 115–145.
- Wilf, P., Zhang, S., Chikkerur, S., Little, S. A., Wing, S. L., and Serre, T. (2016). Computer vision cracks the leaf code. *Proc. Natl. Acad. Sci. U.S.A.* 113, 3305–3310. doi: 10.1073/pnas.1524473113
- Willis, L., Refahi, Y., Wightman, R., Landrein, B., Teles, J., Huang, K. C., et al. (2016). Cell size and growth regulation in the *Arabidopsis thaliana* apical stem cell niche. *Proc. Natl. Acad. Sci. U.S.A.* 113, E8238–E8246. doi: 10.1073/pnas.1616768113
- Woltereck, R. (1909). Weitere experimentelle untersuchungen über artveränderung, speziell über das wesen quantitativer artunterschiede bei *Daphniden*. (Further investigations of type variation, specifically concerning the nature of quantitative differences between varieties of *Daphnia*). *Verh. Deutsch. Zool. Ges.* 19, 110–173.
- Yang, W., Guo, Z., Huang, C., Duan, L., Chen, G., Jiang, N., et al. (2014). Combining high-throughput phenotyping and genome-wide association studies to reveal natural genetic variation in rice. *Nat. Commun.* 5:5087. doi: 10.1038/ncomms6087
- Zhang, J., Ku, L. X., Han, Z. P., Guo, S. L., Liu, H. J., Zhang, Z. Z., et al. (2014). The ZmCLA4 gene in the qLA4-1 QTL controls leaf angle in maize (*Zea mays* L.). *J. Exp. Bot.* 65, 5063–5076. doi: 10.1093/jxb/eru271
- Zhu, J., Brown, K. M., and Lynch, J. P. (2010). Root cortical aerenchyma improves the drought tolerance of maize (*Zea mays* L.). *Plant Cell Environ.* 33, 740–749. doi: 10.1111/j.1365-3040.2009.02099.x
- Zhu, J., Kaeppler, S. M., and Lynch, J. P. (2005). Mapping of QTLs for lateral root branching and length in maize (*Zea mays* L.) under differential phosphorus supply. *Theor. Appl. Genet.* 111, 688–695. doi: 10.1007/s00122-005-2051-3
- Zurek, P. R., Topp, C. N., and Benfey, P. N. (2015). Quantitative trait locus mapping reveals regions of the maize genome controlling root system architecture. *Plant Physiol.* 167, 1487–1496. doi: 10.1104/pp.114.251751

Conflict of Interest Statement: The authors declare that the research was conducted in the absence of any commercial or financial relationships that could be construed as a potential conflict of interest.

Copyright © 2017 Bucksch, Atta-Boateng, Azihou, Battogtokh, Baumgartner, Binder, Braybrook, Chang, Coneva, DeWitt, Fletcher, Gehan, Diaz-Martinez, Hong, Iyer-Pascuzzi, Klein, Leiboff, Li, Lynch, Maizel, Maloof, Markelz, Martinez, Miller, Mio, Palubicki, Poorter, Pradal, Price, Puttonen, Reese, Rellán-Álvarez, Spalding, Sparks, Topp, Williams and Chitwood. This is an open-access article distributed under the terms of the Creative Commons Attribution License (CC BY). The use, distribution or reproduction in other forums is permitted, provided the original author(s) or licensor are credited and that the original publication in this journal is cited, in accordance with accepted academic practice. No use, distribution or reproduction is permitted which does not comply with these terms.