



HAL
open science

Impact of Wolbachia on oxidative stress sensitivity in the parasitic wasp *Asobara japonica*

David Monnin, Natacha Kremer, Emmanuel Desouhant, Fabrice Vavre

► **To cite this version:**

David Monnin, Natacha Kremer, Emmanuel Desouhant, Fabrice Vavre. Impact of Wolbachia on oxidative stress sensitivity in the parasitic wasp *Asobara japonica*. PLoS ONE, 2017, 5, pp.10. 10.1371/journal.pone.0175974 . hal-01523927

HAL Id: hal-01523927

<https://inria.hal.science/hal-01523927v1>

Submitted on 17 May 2017

HAL is a multi-disciplinary open access archive for the deposit and dissemination of scientific research documents, whether they are published or not. The documents may come from teaching and research institutions in France or abroad, or from public or private research centers.

L'archive ouverte pluridisciplinaire **HAL**, est destinée au dépôt et à la diffusion de documents scientifiques de niveau recherche, publiés ou non, émanant des établissements d'enseignement et de recherche français ou étrangers, des laboratoires publics ou privés.

RESEARCH ARTICLE

Impact of *Wolbachia* on oxidative stress sensitivity in the parasitic wasp *Asobara japonica*

David Monnin*, Natacha Kremer, Emmanuel Desouhant, Fabrice Vavre

Université Lyon 1, CNRS, UMR 5558, Laboratoire de Biométrie et Biologie Evolutive, Villeurbanne, France

* david.monnin@hotmail.fr



Abstract

The oxidative homeostasis is the balance between reactive oxygen species and antioxidant molecules. In addition to be considered as a key factor underlying life-history traits evolution, the oxidative homeostasis has been shown to be involved in many host–symbiont associations. Previous studies suggest an interaction between the bacterial endosymbiont *Wolbachia* and the oxidative homeostasis of some insect hosts. This interaction is likely to exert a strong influence on the host evolution, as it has been proposed in the wasp *Asobara tabida*, whose dependence upon *Wolbachia* is due to the evolutionary loss of its ability to regulate the oxidative homeostasis in the absence of the symbiont. Although such cases of complete dependence are rare, cases of insects having lost only a part of their autonomy over the control of the oxidative homeostasis might be more common. If so, one can expect that insects having coevolved with *Wolbachia* will be more sensitive to oxidative stress when cured of their symbionts. We tested this hypothesis by studying the effects of an experimentally-induced oxidative stress on various life-history traits of *Asobara japonica*, a species closely related to *A. tabida*. For most of the life-history traits studied, the sensitivity of the wasps to oxidative stress did not correlate with their infection status. The only exception was the parasitic success. However, contrarily to our expectation, the sensitivity to oxidative stress was increased, rather than decreased, when *Wolbachia* was present. This result suggests that *Wolbachia* does not participate to mitigate oxidative stress in *A. japonica*, and that on the contrary its presence might still be costly in stressful environments.

OPEN ACCESS

Citation: Monnin D, Kremer N, Desouhant E, Vavre F (2017) Impact of *Wolbachia* on oxidative stress sensitivity in the parasitic wasp *Asobara japonica*. PLoS ONE 12(4): e0175974. <https://doi.org/10.1371/journal.pone.0175974>

Editor: Bok-Luel Lee, Pusan National University, REPUBLIC OF KOREA

Received: January 10, 2017

Accepted: April 3, 2017

Published: April 20, 2017

Copyright: © 2017 Monnin et al. This is an open access article distributed under the terms of the [Creative Commons Attribution License](https://creativecommons.org/licenses/by/4.0/), which permits unrestricted use, distribution, and reproduction in any medium, provided the original author and source are credited.

Data Availability Statement: All relevant data are within the Supporting Information files.

Funding: This work was supported by the Agence Nationale de la Recherche (<http://www.agence-nationale-recherche.fr/>) Program ‘ImmunSymbArt’, ANR-2010-BLAN-170101 to FV and the Marie Curie Actions, FP7-PEOPLE-2010-IOF/272684/SymbIOx to NK. The funders had no role in study design, data collection and analysis, decision to publish, or preparation of the manuscript.

Competing interests: The authors have declared that no competing interests exist.

Introduction

The bacterial endosymbiont *Wolbachia* is well known for its ability to invade arthropod host populations through various manipulations of reproduction, such as cytoplasmic incompatibility, male-killing, phenotypic feminisation and thelytokous parthenogenesis [1]. More recently, the impact of *Wolbachia* on host physiology has also been considered, for example to understand how *Wolbachia* mediate other phenotypes such as viral protection [2,3]. Notably, an interaction between *Wolbachia* infection and the host oxidative homeostasis has been shown in several insect species [4–9]. The oxidative homeostasis is the balance between reactive oxygen species (ROS) and antioxidant molecules. ROS are mostly produced as a by-

product of the oxidative phosphorylation in mitochondria [10], but can also be produced in a controlled manner, as an immune response against microorganisms [11]. This is presumably why *Wolbachia* induces an oxidative stress—*i.e.*, a deleterious excess of ROS relative to antioxidant molecules—in some of its hosts [4,6]. Interestingly, this *Wolbachia*-induced disruption of the oxidative homeostasis seems to be found in novel (*i.e.*, artificially transinfected) hosts rather than in native ones [12,13]. It can therefore be hypothesized that the coevolution between the symbiotic partners leads usually to a mitigation of the *Wolbachia*-induced oxidative homeostasis disruption [13,14]. Indeed, given the strong impact of the oxidative state on the host life-history traits [15] and on the symbiotic population density [5,7,8], adaptation to *Wolbachia* is likely to involve modulations of the oxidative homeostasis.

In the parasitic wasp *Asobara tabida*, it is even thought that the evolution of mitigation led to the complete dependence of the wasp for oogenesis [16]. In aposymbiotic females (*i.e.*, cured from *Wolbachia*), a strong apoptosis in ovaries prevents the development of fertile eggs [17]. Transcriptomic data [18,19], as well as experimental manipulation of the iron load in the food that increases oxidative stress [18], suggest that the adaptation to the presence of *Wolbachia* has resulted in the loss of *A. tabida* ability to regulate its oxidative homeostasis in the absence of its symbiont [14,20]. Dependence phenotypes such as the one observed in *A. tabida* are the exception rather than the rule in arthropod–*Wolbachia* associations. However, subtler consequences of host adaptation to *Wolbachia* may be widespread and detectable in the form of “partial dependence”, *i.e.*, a minor decrease in the host ability to withstand the absence of its symbiont. For example, the decrease in offspring productivity associated with the elimination of *Wolbachia* observed in some *Drosophila simulans* lines may be indicative of partial dependence [21].

In the present study, we looked for evidence of oxidative homeostasis-related partial dependence in *Asobara japonica*, a species closely related to *A. tabida*. In this species endemic from Japan, populations in the main islands are mostly composed of infected females reproducing asexually through *Wolbachia* induced thelytoky, whereas populations in southern islands are composed of uninfected males and females that reproduce sexually [22,23]. As *Wolbachia* disturbs the oxidative homeostasis in several species [4,6,12,18], we hypothesized that adaptation to *Wolbachia* in infected (thelytokous) populations of *A. japonica* involved modifications of oxidative homeostasis regulation processes. If so, these wasps may have evolved a form of partial dependence to *Wolbachia* that would manifest itself as a decreased ability to regulate the oxidative homeostasis in its absence. To test this hypothesis, we challenged the wasps with a pro-oxidant treatment (paraquat) and evaluated their sensitivity to this oxidative stress by measuring various life-history traits (parasitic success, larval development duration, body size, and potential fecundity). We measured oxidative stress sensitivity as the difference between the value of a trait in absence and in presence of the pro-oxidant treatment. We predicted that the sensitivity to oxidative stress should be higher in aposymbiotic *A. japonica* than in symbiotic ones. The reverse result, *i.e.*, higher oxidative stress sensitivity in symbiotic wasps, may indicate that *Wolbachia* still disturbs the oxidative homeostasis of its host, despite the long-term relationship of the two partners. To control for potential direct effects of the antibiotic treatment used to obtain aposymbiotic individuals (*i.e.*, effects unrelated to the elimination of *Wolbachia*), asymbiotic individuals from uninfected (arrhenotokous) populations were used as a control.

Material & methods

Biological material

Asobara japonica is a solitary parasitoid species of fruit flies. Four lines of *A. japonica* were used in the present study: two from thelytokous (infected) populations, T1 and T2 (originating

from Kagoshima and Tokyo, respectively) and two from arrhenotokous (uninfected) populations, A1 and A2 (originating from Amami-oshima and Iriomote-jima, respectively). Wasps were trapped in the field [24] and provided by MT Kimura. These lines were maintained in the lab at 21°C on a *Wolbachia*-free line of *Drosophila melanogaster* originating from Sainte-Foy-lès-Lyon (France). The experiment described hereafter was performed at the same temperature, with the same *Drosophila* line used as a host.

Antibiotic and paraquat treatments

An antibiotic treatment (rifampicin) was performed to eliminate *Wolbachia* when present (as described in [23]). A paraquat treatment (Sigma-Aldrich) was performed (as described in [8]) to induce oxidative stress in the wasps through the generation of intracellular ROS [25]. In the lytokous populations, *A. japonica* is dependent upon *Wolbachia* for sexual reproduction [23], preventing uninfected T1 and T2 lines to be established. The antibiotic treatments were thus performed together with the oxidative challenge, and arrhenotokous uninfected lines were included in the experimental design to control for the direct effects of the antibiotic treatment, apart from the elimination of *Wolbachia*. In summary, the experimental design consisted in 4 lines of wasps and 4 modalities of treatment: no treatment, antibiotics but no paraquat, paraquat but no antibiotics, and both antibiotics and paraquat. Therefore, 150 µL of either water or a 2% rifampicin solution were deposited on 1.5 g of fly medium [26], to which were further added 150 µL of either water or a 10 mM solution of paraquat. The concentration of paraquat was determined during a preliminary experiment to ensure that the dose would neither be lethal, nor biologically negligible for the fly larvae (S1 Fig). One hundred *Drosophila* eggs were deposited on this medium, which was then inserted in an agar-containing vial, together with two female wasps, which were allowed to lay eggs for two days. As the parasitic success calculation requires a control of *Drosophila* hatching rate, vials identical to the 4 modalities of treatment but without wasps were also included. Ten replicates (vials) were performed for each of the 20 modalities.

Life-history traits measurements

For each *A. japonica* line and experimental modality, the following traits were measured: parasitic success, larval development duration, tibia length (as a proxy for body size), and egg load at emergence (as a proxy for potential fecundity). The emerging insects were counted each day to calculate the parasitic success of the wasps, as well as their larval development duration. The parasitic success ps was calculated as in [27]: $ps = p_i / (d_m - d_i)$, with p_i the number of wasps that emerged from the vial i , d_i the number of flies that emerged from the vial i , and d_m the average number of flies that emerged from the control vials (without wasp) of the relevant treatment modality. The 5 vials in which no wasps emerged were removed from the analysis. The parasitic success was set to one when its calculated value was greater than one. *A. japonica* is mostly proovogenic, which means that females emerge with a stock of eggs, almost all of which are mature. To estimate potential fecundity, twenty females were isolated at emergence from the ten replicate vials of each modality, and fed with honey for five days, to ensure that egg maturation is complete and that their egg load is a reliable estimate of their potential fecundity. The two ovaries were dissected in a Phosphate Buffer Saline solution (1X PBS pH 7.4, Eurobio), individually transferred onto a slide, and then gently crushed between a slide and coverslip to disperse the egg content. These preparations were observed under a microscope (AxioCam Imager Z.1, Zeiss), and the eggs in both ovaries were counted using ImageJ software [28]. Egg load was calculated as the sum of eggs in the two ovaries. The length of the tibia of the left hind leg, was measured under the microscope on the same females, as a proxy for body size.

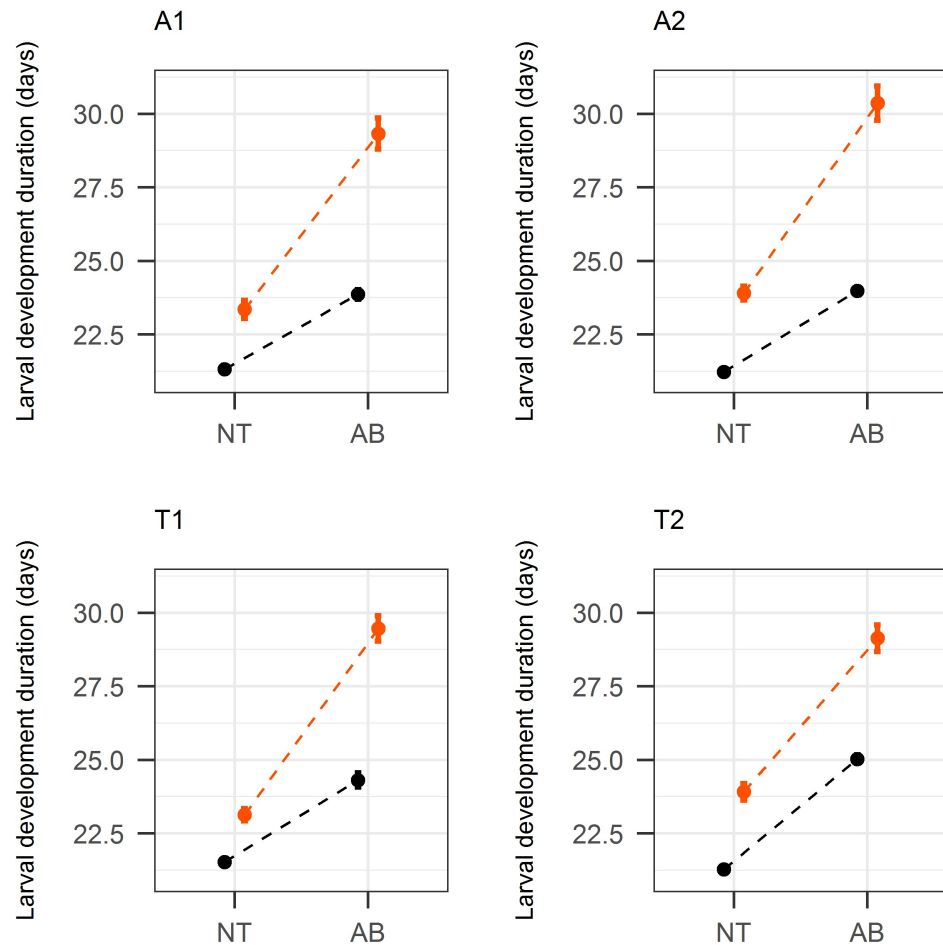


Fig 1. Larval development duration (mean \pm SE) for each *Asobara japonica* line, with (AB) or without (NT) antibiotic treatment and with (orange) or without (black) paraquat.

<https://doi.org/10.1371/journal.pone.0175974.g001>

Statistical analyses

A statistical model was fitted for each life-history trait. The parasitic success data were analysed by means of a mixed generalized linear model with a binomial distribution and a logit link function. The model was fitted with three fixed factors: reproductive mode (arrhenotokous or thelytokous), antibiotic treatment (yes or no) and paraquat treatment (yes or no) and their interactions. The line factor (A1, A2, T1 and T2) was included as a random effect. The overdispersion of the data was corrected using an observation-level random effect [29]. The larval development duration data were analysed by means of a mixed generalized linear model with a Gamma distribution and an inverse link function. The fixed effect factors were the same as those used in the model fitted for the parasitic success data. The line factor was also included as a random effect. The replicate vial factor was included as a random effect to account for the potential pseudo-replication due to the insects developing in the same vial. Body size (length of the tibia) and potential fecundity (egg load) were analysed by means of mixed linear models with the line factor as a random effect. Homoscedasticity and normality were checked graphically. In the body size model, the fixed effect factors were the same as in the two previously described models. In the potential fecundity model, by contrast, the length of the tibia was included as a quantitative explanatory variable to correct for the influence of body size on

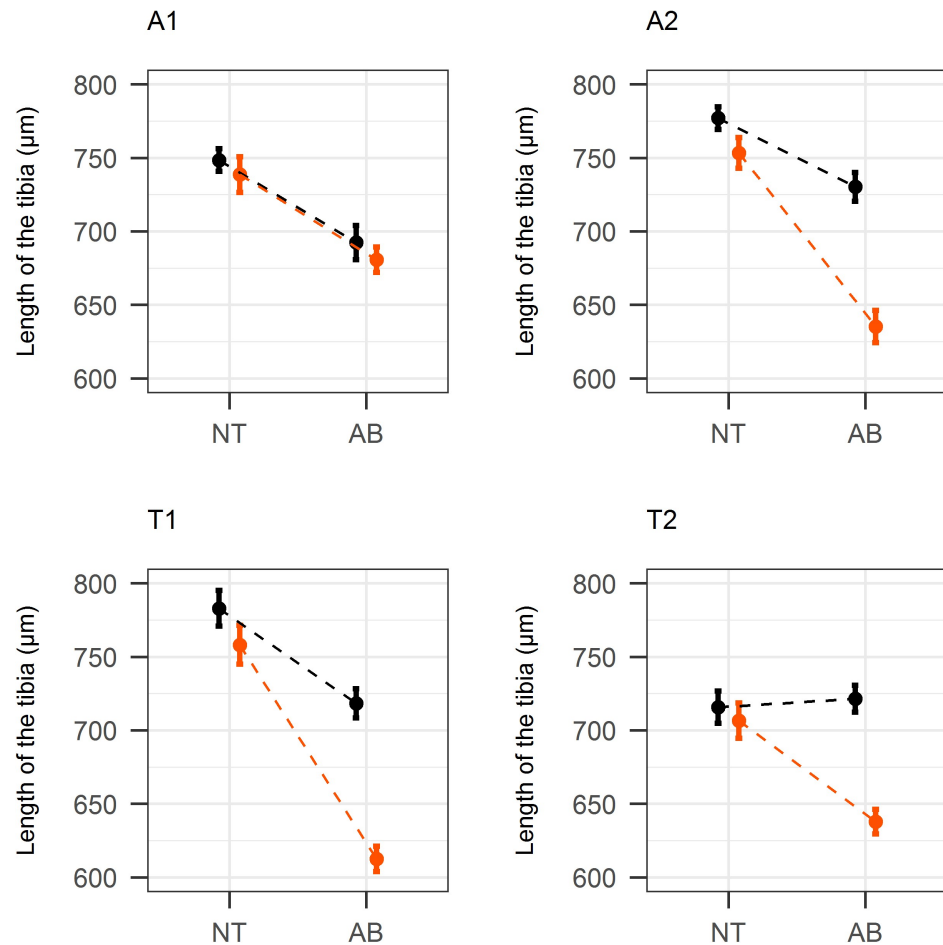


Fig 2. Tibia length (mean \pm SE) for each *Asobara japonica* line, with (AB) or without (NT) antibiotic treatment and with (orange) or without (black) paraquat.

<https://doi.org/10.1371/journal.pone.0175974.g002>

potential fecundity. For each model, we focused on the significance of the interaction between reproductive mode, antibiotic treatment and paraquat treatment, as well as the sign of this interaction. Indeed, we were interested in knowing whether the presence of *Wolbachia*—which, in thelytokous individuals, depends on whether an antibiotic treatment has been performed—has an impact on oxidative stress sensitivity, measured as the effect of the paraquat treatment. All statistical analyses were conducted using the R software version 3.2.4 [30].

Results & discussion

Based on evidences coming from *A. tabida* [18–20] and other host species, such as mosquitoes [6,12] and flies [4], we hypothesized that coevolution between insects and *Wolbachia* generally results in the host reduced ability to regulate oxidative stress in the absence of its symbiont. We tested this hypothesis by comparing the effect of antibiotics on oxidative stress sensitivity in thelytokous (naturally infected) versus arrhenotokous (naturally uninfected) lines of the wasp *A. japonica*.

Contrary to our expectation, we found that the impact of antibiotics on oxidative stress sensitivity was rarely associated with the infection status. Indeed, the interaction between reproductive mode, antibiotic treatment, and paraquat treatment was not statistically significant for

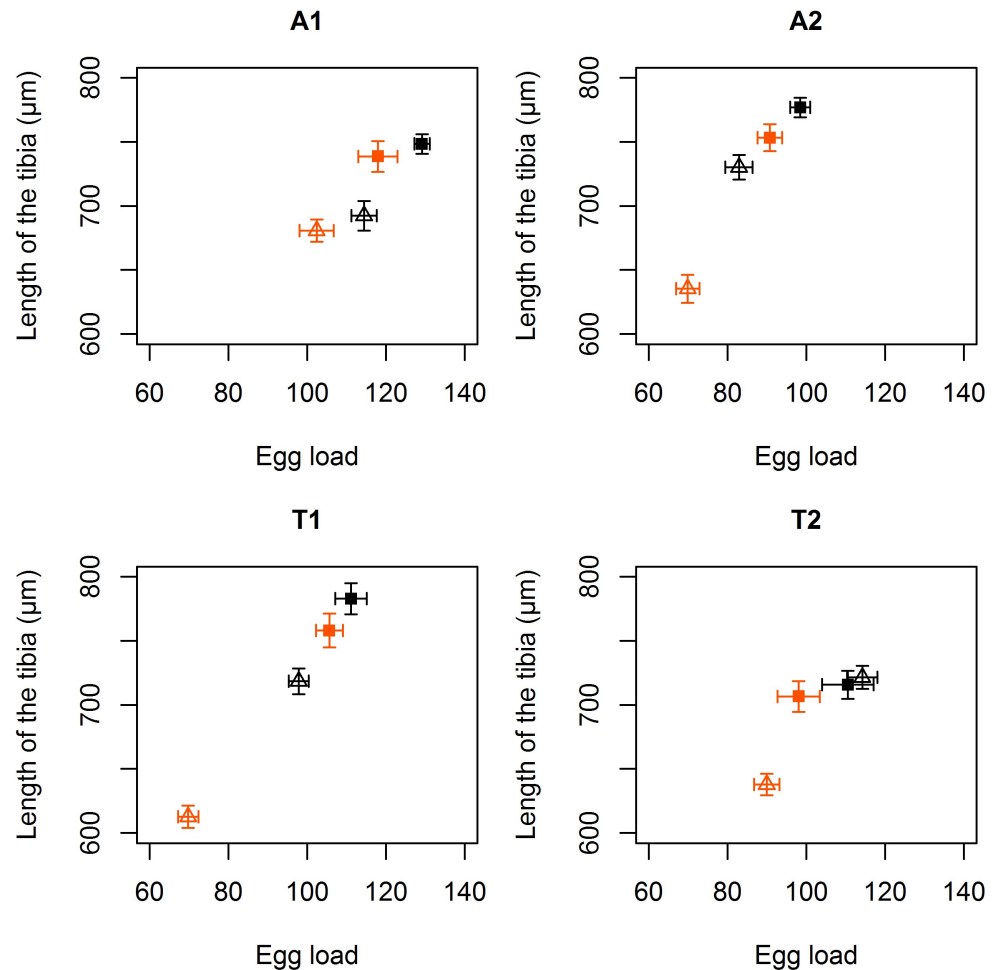


Fig 3. Egg load (mean ± SE) and tibia length (mean ± SE) for each *Asobara japonica* line, with (triangles) or without (squares) antibiotic treatment and with (orange) or without (black) paraquat.

<https://doi.org/10.1371/journal.pone.0175974.g003>

larval development duration ($\chi^2_1 = 0.17$, $p = 0.68$; Fig 1), body size ($\chi^2_1 = 3.68$, $p = 0.06$; Fig 2), and potential fecundity ($\chi^2_1 = 0.25$, $p = 0.62$; Fig 3). However, a statistically significant effect of the paraquat treatment was found on all these traits: larval development duration: $\chi^2_2 = 116.49$, $p < 0.001$; body size: $\chi^2_2 = 82.46$, $p < 0.001$; potential fecundity: $\chi^2_1 = 6.16$, $p = 0.01$. Furthermore, the effect of the paraquat treatment is likely to be deleterious, as it leads to an increase of the larval development duration (in all cases; Fig 1), a decrease of the body size (in some experimental modalities; Fig 2), or a decrease of the potential fecundity (in some experimental modalities; Fig 3). These results indicate that the paraquat treatment was sufficient to induce an oxidative stress on the wasps.

The interaction between reproductive mode, antibiotic treatment, and paraquat treatment was statistically significant for parasitic success ($\chi^2_1 = 10.95$, $p < 0.001$; Fig 4). Indeed, the oxidative stress sensitivity was increased by the antibiotic treatment in the two arrhenotokous lines, but not in the two thelytokous lines. Although the paraquat treatment reduced the parasitic success of T2 but not of T1 wasps, these two lines were similar in that the antibiotic treatment did not increase their oxidative stress sensitivity.

In arrhenotokous lines, the antibiotic treatment increased parasitic success in the absence of the paraquat treatment ($z = 3.19$, $p = 0.001$; mean difference: 0.14 ± 0.05). This positive effect

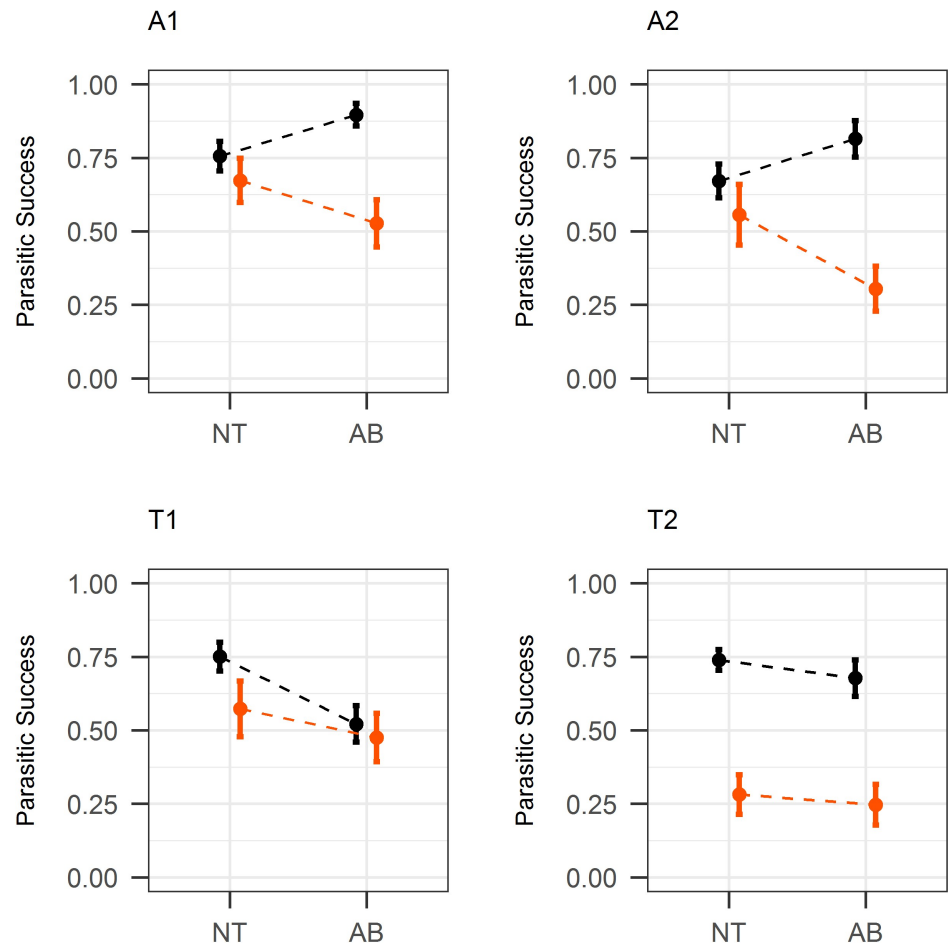


Fig 4. Parasitic success (mean ± SE) for each *Asobara japonica* line, with (AB) or without (NT) antibiotic treatment and with (orange) or without (black) paraquat.

<https://doi.org/10.1371/journal.pone.0175974.g004>

of antibiotic treatment on parasitic success in absence of paraquat treatment was not observed in thelytokous lines ($z = -1.77$, $p = 0.077$). This suggests that the elimination of *Wolbachia* is detrimental to parasitic success in these conditions. This beneficial effect of *Wolbachia* possibly reflects a partial dependence of *A. japonica* upon it.

In arrhenotokous lines, the antibiotic treatment decreased parasitic success in the presence of the paraquat treatment ($z = -2.59$, $p = 0.010$; mean difference: 0.19 ± 0.09). This negative effect of the antibiotic treatment on parasitic success in the presence of the paraquat treatment was not observed in the thelytokous lines ($z = -0.71$, $p = 0.478$). It seems therefore that in thelytokous lines, the elimination of *Wolbachia* prevented the synergistic deleterious effect of the antibiotic and paraquat treatments observed in the arrhenotokous lines. Although *A. japonica* may not face oxidative stresses as intense as the one induced by the paraquat treatment in natural conditions, this result suggests that the elimination of *Wolbachia* increases the wasp ability to regulate oxidative stress. If so, the ability of *A. japonica* to control its oxidative homeostasis may still be impaired by the presence of *Wolbachia*, rather than being dependent upon it. We expect such a deleterious effect of *Wolbachia* to be eliminated in the course of host-symbiont coevolution. Its persistence may indicate that the infection by *Wolbachia* is either too recent, or not costly enough in natural conditions, for adaptation to have occurred.

The deleterious synergy between the antibiotic and paraquat treatments is a striking aspect of our results, as it is observed for most life-history traits and lines, including uninfected ones. Although a direct chemical interaction between the two compounds cannot be ruled out, another possibility is that the microbiota, apart from *Wolbachia* (e.g., the gut microbiota), is also altered by the antibiotic treatment and play an important role in oxidative homeostasis regulation.

Strictly speaking, our results do not rule out the possible dependence of *A. japonica* upon *Wolbachia* for the control of its oxidative homeostasis. Indeed, we focused only on the sensitivity to oxidative stress, i.e., to an excess of ROS. However, a deficit of ROS may also be a deleterious condition and it is therefore possible for the insect to evolve a dependence towards *Wolbachia* for the remediation of this condition. Replacing the pro-oxidant treatment (paraquat) with an antioxidant treatment (e.g., glutathione) in our experimental setup would allow testing the hypothesis that the elimination of *Wolbachia* aggravates the wasp sensitivity to a deficit of ROS.

However, our results suggest that *A. japonica* did not evolve a partial dependence to *wAjap* for the regulation of oxidative stress. This result contrasts with what is observed in *A. tabida*, highlighting the need for a better understanding of the factors influencing host–*Wolbachia* coevolution. In particular, the assumption that the host is likely to adapt to its symbiont can be questioned. Indeed, the response to the infection may be plastic, and therefore reversible (not leading to any impairment if the symbiont is lost). Furthermore, even if genetic evolution occurs, it may occur in the symbiont rather than in the host (e.g., [31]), in which case the latter will not evolve any dependence.

Supporting information

S1 Fig. Impact of the dose of paraquat on the length of the wing in *Drosophila melanogaster*. 150 μ L of each solution were added to 1.5 g of standard *Drosophila* medium, on which 100 eggs were deposited. The highest dose (100 mM) was lethal (no egg reached adulthood). In the three remaining modalities, the dose of paraquat had a statistically significant effect on the length of the wing (linear model, $F_{2,34} = 7.76$, $p = 0.0017$). The lowest dose (1 mM) had no effect on the length of the wing (Tukey post hoc test, adjusted p-value = 0.89) whereas the flies treated with the intermediary dose (10 mM) had shorter wing than both the untreated (Tukey post hoc test, adjusted p-value = 0.0079) and the treated with the lowest dose flies (Tukey post hoc test, adjusted p-value = 0.0028).

(TIF)

S1 File. Supporting data.

(XLSX)

Acknowledgments

We thank Nicole Lara for providing the *Drosophila* media.

Author Contributions

Conceptualization: DM ED FV.

Formal analysis: DM.

Funding acquisition: FV.

Investigation: DM.

Writing – original draft: DM.

Writing – review & editing: NK ED FV.

References

1. Werren JH, Baldo L, Clark ME. *Wolbachia*: master manipulators of invertebrate biology. *Nat. Rev. Microbiol.* 2008; 6(10):741–51. <https://doi.org/10.1038/nrmicro1969> PMID: 18794912
2. Hedges LM, Brownlie JC, Neill SLO, Johnson KN. *Wolbachia* and Virus Protection in Insects. *Science.* 2008; 322:702. <https://doi.org/10.1126/science.1162418> PMID: 18974344
3. Teixeira L, Ferreira Á, Ashburner M. The bacterial symbiont *Wolbachia* induces resistance to RNA viral infections in *Drosophila melanogaster*. *PLoS Biol.* 2008; 6(12):2753–63.
4. Brennan LJ, Keddie BA, Braig HR, Harris HL. The endosymbiont *Wolbachia pipientis* induces the expression of host antioxidant proteins in an *Aedes albopictus* cell line. *PLoS One.* 2008 Jan; 3(5): e2083. <https://doi.org/10.1371/journal.pone.0002083> PMID: 18461124
5. Brennan LJ, Haukedal JA, Earle JC, Keddie B, Harris HL. Disruption of redox homeostasis leads to oxidative DNA damage in spermatocytes of *Wolbachia*-infected *Drosophila simulans*. *Insect Mol. Biol.* 2012; 21(5):510–20. <https://doi.org/10.1111/j.1365-2583.2012.01155.x> PMID: 22831171
6. Pan X, Zhou G, Wu J, Bian G, Lu P, Raikhel AS, et al. *Wolbachia* induces reactive oxygen species (ROS)-dependent activation of the Toll pathway to control dengue virus in the mosquito *Aedes aegypti*. *Proc. Natl. Acad. Sci. U. S. A.* 2012; 109(1):E23–31. <https://doi.org/10.1073/pnas.1116932108> PMID: 22123956
7. Fallon AM, Kurtz CM, Carroll EM. The oxidizing agent, paraquat, is more toxic to *Wolbachia* than to mosquito host cells. *In Vitro Cell. Dev. Biol. Anim.* 2013; 49(7):501–7. <https://doi.org/10.1007/s11626-013-9634-0> PMID: 23719839
8. Monnin D, Kremer N, Berny C, Henri H, Dumet A, Voituron Y, et al. Influence of oxidative homeostasis on bacterial density and cost of infection in *Drosophila*–*Wolbachia* symbioses. *J. Evol. Biol.* 2016; 29(6):1211–1222. <https://doi.org/10.1111/jeb.12863> PMID: 26999590
9. Wong ZS, Hedges LM, Brownlie JC, Johnson KN. *Wolbachia*-mediated antibacterial protection and immune gene regulation in *Drosophila*. *PLoS One.* 2011; 6(9):e25430. <https://doi.org/10.1371/journal.pone.0025430> PMID: 21980455
10. Schieber M, Chandel NS. ROS Function in Redox Signaling and Oxidative Stress. *Curr. Biol.* 2014; 24(10):R453–R462. <https://doi.org/10.1016/j.cub.2014.03.034> PMID: 24845678
11. Nathan C, Cunningham-Bussell A. Beyond oxidative stress: an immunologist's guide to reactive oxygen species. *Nat. Rev. Immunol.* 2013 May; 13(5):349–61.
12. Andrews ES, Crain PR, Fu Y, Howe DK, Dobson SL. Reactive oxygen species production and *Brugia pahangi* survivorship in *Aedes polynesiensis* with artificial *Wolbachia* infection types. *PLoS Pathog.* 2012; 8(12):e1003075. <https://doi.org/10.1371/journal.ppat.1003075> PMID: 23236284
13. Zug R, Hammerstein P. *Wolbachia* and the insect immune system: what reactive oxygen species can tell us about the mechanisms of *Wolbachia*–host. *Front. Microbiol.* 2015; 6:1–16.
14. Moné Y, Monnin D, Kremer N. The oxidative environment: a mediator of interspecies communication that drives symbiosis evolution. *Proc. R. Soc. A.* 2014; 281(1785):20133112.
15. Costantini D. *Oxidative Stress and Hormesis in Evolutionary Ecology and Physiology.* Springer, Berlin; 2014.
16. Dedeine F, Vavre F, Fleury F, Loppin B, Hochberg ME, Boulétreau M. Removing symbiotic *Wolbachia* bacteria specifically inhibits oogenesis in a parasitic wasp. *Proc. Natl. Acad. Sci. U. S. A.* 2001; 98(11):6247–52. <https://doi.org/10.1073/pnas.101304298> PMID: 11353833
17. Pannebakker BA, Loppin B, Elemans CPH, Humblot L, Vavre F. Parasitic inhibition of cell death facilitates symbiosis. *Proc. Natl. Acad. Sci. U. S. A.* 2007; 104(1):213–5. <https://doi.org/10.1073/pnas.0607845104> PMID: 17190825
18. Kremer N, Voronin D, Charif D, Mavingui P, Mollereau B, Vavre F. *Wolbachia* interferes with ferritin expression and iron metabolism in insects. *PLoS Pathog.* 2009; 5(10):e1000630. <https://doi.org/10.1371/journal.ppat.1000630> PMID: 19851452
19. Kremer N, Charif D, Henri H, Gavory F, Wincker P, Mavingui P, et al. Influence of *Wolbachia* on host gene expression in an obligatory symbiosis. *BMC Microbiol.* 2012; 12(1):1.
20. Kremer N, Dedeine F, Charif D, Finet C, Allemand R, Vavre F. Do variable compensatory mechanisms explain the polymorphism of the dependence phenotype in the *Asobara tabida*-*Wolbachia* association? *Evolution.* 2010; 64(10):2969–79. <https://doi.org/10.1111/j.1558-5646.2010.01034.x> PMID: 20482609

21. Poinso D, Merçot H, Poinso D, Mercot H. *Wolbachia* infection in *Drosophila simulans*: does the female host bear a physiological cost? *Evolution*. 2014; 51(1):180–6.
22. Murata YU, Ideo SH, Watada MA, Mitsui HI, Kimura MAT. Genetic and physiological variation among sexual and parthenogenetic populations of *Asobara japonica* (Hymenoptera: Braconidae), a larval parasitoid of drosophilid flies. *Eur. J. Entomol.* 2009; 5759:171–8.
23. Kremer N, Charif D, Henri H, Bataille M, Prévost G, Kraaijeveld K, et al. A new case of *Wolbachia* dependence in the genus *Asobara*: evidence for parthenogenesis induction in *Asobara japonica*. *Heredity*. 2009; 103(3):248–56. <https://doi.org/10.1038/hdy.2009.63> PMID: 19513092
24. Mitsui H, Achterberg K Van, Nordlander G. Geographical distributions and host associations of larval parasitoids of frugivorous Drosophilidae in Japan. *J. Nat. Hist.* 2007; 41(25–28):1731–1738.
25. Hassan HM, Fridovich I. Regulation of the synthesis of superoxide dismutase in *Escherichia coli*. *J. Biol. Chem.* 1977; 252:7667–7672. PMID: 334765
26. David JR, Clavel MF. Interaction entre le génotype et le milieu d'élevage. Conséquences sur les caractéristiques du développement de la Drosophile. *Bull. Biol. Fr. Belg.* 1965; 99:369–78.
27. Boulétreau M, Wajnberg E. Comparative responses of two sympatric parasitoid cynipids to the genetic and epigenetic variations of the larvae of their host, *Drosophila melanogaster*. *Entomol. exp. appl.* 1986; 41:107–114.
28. Abràmoff MD, Magalhães PJ, Ram SJ. Image processing with ImageJ. *Biophotonics*. 2004; 11(7):36–42.
29. Harrison XA. A comparison of observation-level random effect and Beta-Binomial models for modelling overdispersion in Binomial data in Ecology & Evolution. *PeerJ*. 2015; 3:e1114. <https://doi.org/10.7717/peerj.1114> PMID: 26244118
30. R Core Team (2016). R: A language and environment for statistical computing. R Foundation for Statistical Computing, Vienna, Austria. URL <https://www.R-project.org/>.
31. Weeks AR, Turelli M, Harcombe WR, Reynolds KT, Hoffmann AA. From parasite to mutualist: rapid evolution of *Wolbachia* in natural populations of *Drosophila*. *PLoS Biol.* 2007; 5(5):e114. <https://doi.org/10.1371/journal.pbio.0050114> PMID: 17439303