



**HAL**  
open science

## Influence of Backoff Period in Slotted CSMA/CA of IEEE 802.15.4

Ahmed Naseem Alvi, Safdar Hussain Bouk, Syed Hassan Ahmed, Muhammad  
Azfar Yaqub

► **To cite this version:**

Ahmed Naseem Alvi, Safdar Hussain Bouk, Syed Hassan Ahmed, Muhammad Azfar Yaqub. Influence of Backoff Period in Slotted CSMA/CA of IEEE 802.15.4. 14th International Conference on Wired/Wireless Internet Communication (WWIC), May 2016, Thessaloniki, Greece. pp.40-51, 10.1007/978-3-319-33936-8\_4. hal-01434866

**HAL Id: hal-01434866**

**<https://inria.hal.science/hal-01434866>**

Submitted on 13 Jan 2017

**HAL** is a multi-disciplinary open access archive for the deposit and dissemination of scientific research documents, whether they are published or not. The documents may come from teaching and research institutions in France or abroad, or from public or private research centers.

L'archive ouverte pluridisciplinaire **HAL**, est destinée au dépôt et à la diffusion de documents scientifiques de niveau recherche, publiés ou non, émanant des établissements d'enseignement et de recherche français ou étrangers, des laboratoires publics ou privés.



Distributed under a Creative Commons Attribution 4.0 International License

# Influence of Backoff Period in slotted CSMA/CA of IEEE 802.15.4

Ahmed Naseem Alvi<sup>1</sup> ( ), Safdar Hussain Bouk<sup>2</sup>, Syed Hassan Ahmed<sup>2</sup>, and Muhammad Azfar Yaqub<sup>2</sup>

<sup>1</sup> Department of Electrical Engineering,  
COMSATS Institute of Information Technology, Islamabad, Pakistan

<sup>2</sup> School of Computer Science & Engineering,  
Kyungpook National University, Daegu, Korea.  
naseem\_alvi@comsats.edu.pk, {bouk, hassan, yaqub}@knu.ac.kr

**Abstract.** *Low rate wireless applications are under attraction since last decade. For such applications, IEEE designed a standard known as IEEE 802.15.4. The standard operates at 868, 915 and 2400MHz with or without using super frame structure. Most of the low rate Wireless PAN applications follow superframe structure. A superframe structure comprises of contention based and contention free periods by offering slotted CSMA/CA and TDMA like operation respectively. This paper analyzes the performance of slotted CSMA/CA algorithm. CSMA/CA algorithm highly depends upon backoff period that is why its impact is analyzed in this work. The performance analysis is based on probability determined by using discrete markov chain model. The performance analysis comprises of nodes waiting time before transmission, channel busy probability and ultimately throughput and reliability is calculated. Results show that network reliability along with throughput of a wireless network increases gradually with the increase in backoff period at the cost of increase in average wait time of nodes.*

**Keywords:** IEEE 802.15.4, CSMA/CA, Markov Chain, Backoff Period

## 1 Introduction

Wireless technologies are developing swiftly as demand of wireless Sensor Networks (WSN) increases. There are number of WSN applications such as surveillance and monitoring. Wireless nodes in WSN are tiny in size having limited energy, computation, processing and communication capabilities. These limitations are not addressed at once by well known IEEE 802.11 and IEEE 802.16 as they consume more energy during idle listening. ZigBee is the most prominent alliance supporting low-power embedded systems and facilitates multiple applications. It uses IEEE 802.15.4 standard at its physical and MAC (Medium Access Control) layer. IEEE 802.15.4 standard is suitable for energy efficient and low data rate applications. Some of these applications are environmental monitoring, light control systems, agricultural monitoring, automatic metering,

industrial and security alarm system [1]. The standard suits well for static and low cost mobile wireless nodes having limited battery power with high reliability, as discussed in [2][3][4].

IEEE 802.15.4 runs at 868MHz, 915MHz and 2.4GHz frequency bands. The standard operates in *Beacon* as well as in *Non-Beacon* enabled modes. Beacon mode comprises of Contention Access Period (CAP) and optional TDMA based Contention Free Period (CFP). During CAP, nodes follow slotted CSMA/CA mechanism. CSMA/CA depends upon multiple parameters, however, the most prominent one is the *backoff period* length. This paper contributes in analyzing the impact of varying backoff periods to determine the IEEE 802.15.4 performance. A comprehensive study of different backoff period lengths and their impact in slotted CSMA/CA, where all wireless nodes contend to access the medium and chances of collision are maximum, is also done in this work. The analysis is performed with fixed number of nodes and similar load variations.

Rest of the paper is organized as follows: In section 2, the performance analysis of different authors in this field is discussed. Next section 3 discusses the brief overview of IEEE 802.15.4 standard. Sections 4 and 4 illustrates slotted CSMA/CA algorithm and markov chain model respectively. Section 6, evaluates the effect of different parameters against varying backoff period and conclusion is described in Section 7.

## 2 Related Work

Contention access period of IEEE 802.15.4 is quite similar to IEEE 802.11. The only differences are that IEEE 802.15.4 starts sensing the availability of medium at the end of the backoff period and also it confirms the channel availability twice before transmitting its packets. Authors in [5][6][7] analyzed the performance of heterogeneous traffic under non saturated mode of IEEE 802.11 Distributed Coordination Function (DCF). In [5], authors presented an extended Bianchi model [8] for unsaturated heterogeneous data traffic of IEEE 802.11 DCF. Authors in [6] used discrete Markov chain model to find out the probability of utilization factor, throughput and delay for diverse traffic in a wireless LAN of IEEE 802.11e. Tickoo *et al.* in [7], considered homogeneous as well as heterogeneous data traffic to analyze the service time distribution of IEEE 802.11.

Many authors have analyzed IEEE 802.15.4 in different scenarios by highlighting its duty cycle and less energy consumption. Performance analysis of un-slotted CSMA/CA in different prospects of the standard is analyzed by authors in [9][10]. In [11][12][13], many simulation based studies are discussed to evaluate the performance of the standard in different prospects. Pollin *et.al.* in [14], used Markov chain model to determine the performance of slotted CSMA/CA of the standard with saturated traffic load. In [15], authors have analyzed the throughput of slotted CSMA/CA by applying enhanced Markov Chain model during un-saturated region. In this work we have explored the importance of backoff period in CSMA/CA operation of IEEE 802.15.4 and analyzed the ef-

Table 1: Frequency Bands with Data Rate

Frequency Band (MHz)	Modulation Scheme	Symbols / sec	Bits / symbol	Symbol Duration (sec)	Data rate (bits/sec)
868 - 868.6	BPSK	20000	1	50*e-6	20000
902 - 928	BPSK	40000	1	25*e-6	40000
2400 - 2483.5	O-QPSK	62500	4	16*e-6	250000

fect of varying backoff period in novel way by following discrete Markov channel model described in [16].

### 3 IEEE 802.15.4 Overview

The standard is designed for both Physical and MAC layers by offering duty cycle even less than 0.1%. The standard operates in three different frequency bands. Detail of all these frequency bands is shown in table 1.

IEEE 802.15.4 uses un-slotted CSMA/CA algorithm during non beacon enabled mode. However, superframe structure is applied in beacon enabled mode. Superframe structure comprises of active and inactive period. Beacon frame, Contention Access Period (CAP) and optional Contention Free Period (CFP) are part of active period as shown in Fig. 1, whereas the node remains in sleep mode during inactive period. Active period consists of 16 slots, out of these 16 slots, maximum 7 slots may be allocated for CFP and the rest consists of Beacon frame and CAP. All beacon enabled nodes contend to access the medium in transmitting data to its coordinator during CAP by following slotted CSMA/CA algorithm as shown in Fig. 3.

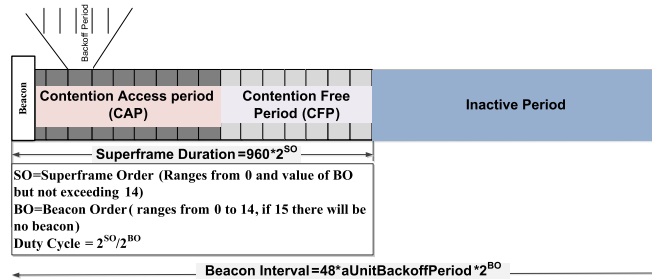


Fig. 1: Superframe structure with CAP and CFP

PAN coordinator is responsible for generating beacon frames in the network after regular intervals. These beacon frames are used to synchronize all the associated nodes in that WPAN. Information about active Superframe duration and arrival of next Beacon frame can be calculated from different parameters highlighted in the superframe specification field present in beacon frame. Superframe

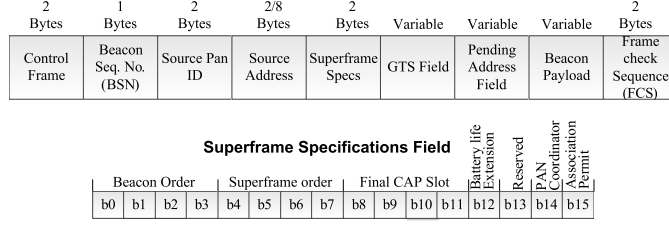


Fig. 2: Beacon frame with Superframe Specification field description

Duration (SD) and Beacon Interval (BI) is calculated as:

$$SD = 48 \times 2^{SO} \times aUnitBackoffPeriod \quad (1)$$

$$BI = 48 \times 2^{BO} \times aUnitBackoffPeriod \quad (2)$$

Expression (1) and (2) show that the Superframe duration and Beacon Intervals mainly depend on  $aUnitBackoffPeriod$  length. Varying the length of  $aUnitBackoffPeriod$  highly affect the performance of CSMA/CA operation during active period of Superframe. That's why, the impact of varying backoff period is evaluated in this work.

## 4 Slotted CSMA/CA Mechanism

During CAP of IEEE 802.15.4, slotted CSMA/CA mechanism is used that mainly comprises of three parameters as NB, BE and CW. NB is number of times, node should wait for backoff periods. Value of NB ranges from 0 to 4. This allows a node to attempt for maximum of 5 times in order to access the channel. If a node fails to find the channel idle for maximum allowed attempts, then it reports failure to its upper layer.

Parameter BE stands for *Backoff Exponent* and it describes the random range of backoff periods, a node should wait before assessing the channel availability. It ranges from 0 to  $2^{BE} - 1$  and default value of BE ranges from 3 to 5 by following the parameters of  $macMinBE$  and  $aMaxBE$ , respectively. This results in backoff period initial range from 0 to 7 and last backoff period range from 0 to 31.

*Contention Window* (CW) is related to idle channel availability by using Clear Channel Assessment (CCA). Initial value of CW is 2, that is node needs to pass the channel availability for two successive times before declaring the channel idle. Detailed flow diagram of CSMA/CA is shown in Fig. 3.

Packets are transmitted only if computed frame's length along with its acknowledgment and inter-frame spacing can be completed within same active period.

A complete frame duration (CFD) consists of time required to transmit data with acknowledgment and is calculated as:

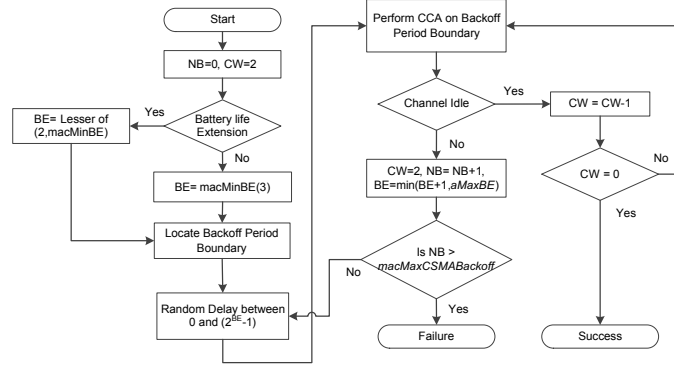


Fig. 3: Flow diagram of slotted CSMA/CA

$$CFD = T_{BO} + T_D + 2T_P + T_{TA} + T_{Ack} + T_{IFS}$$

where,

$T_{BO}$  = Waiting time during Backoff Periods,

$T_D$  = Frame's transmitting time,

$T_P$  = Propagation delay from source to destination,

$T_{TA}$  = Turn around time,

$T_{Ack}$  = Time for Acknowledgment frame, and

$T_{IFS}$  = Time for Inter frame space.

## 5 Markov Chain Model for slotted CSMA/CA of IEEE 802.15.4

The operation of slotted CSMA/CA is analyzed with the help of discrete Markov chain model. The model is implemented by considering such states where changes occur. Slotted CSMA/CA algorithm based on three basic parameters, NB, BE and CW as mentioned in 4. Similarly in this model, each state (A) defines NB(t), BC(t) and CW(t). Here NB(t) is the value of NB at time t and it ranges from 0 to  $m$ , where  $m = \text{macMaxCSMABackoff}$ . BC(t) indicates backoff counters in each state and its value ranges from 0 to  $W_{i-1}$ , where  $W_i = 2^{BE}$  and can be computed as shown in eq.3. CW(t)[0, 2] represents contention windows. The state k, b, 2 represents that node is in its (k+1)th backoff period, where b represents backoff counter and 2 means node requires to perform CCA for two times. A discrete Markov chain model is shown in figure 4.

$$W_i = 2^{\text{macMinBE}} \times 2^{\min\{a\text{MaxBE} - \text{macMinBE}, i\}} \quad (3)$$

Some of the states mentioned in the model are described as under.

$\{-1, 0, 0\}$  idle state  $\{k, 0, 2\}$  node is going to perform CCA1 during (k+1)th time  $\{k, 0, 1\}$  node is about to perform CCA2 during (k+1)th time  $\{k, 0, 0\}$  node successfully passed the CCA1 and CCA2  $\{k, b, 2\}$  node needs to wait for

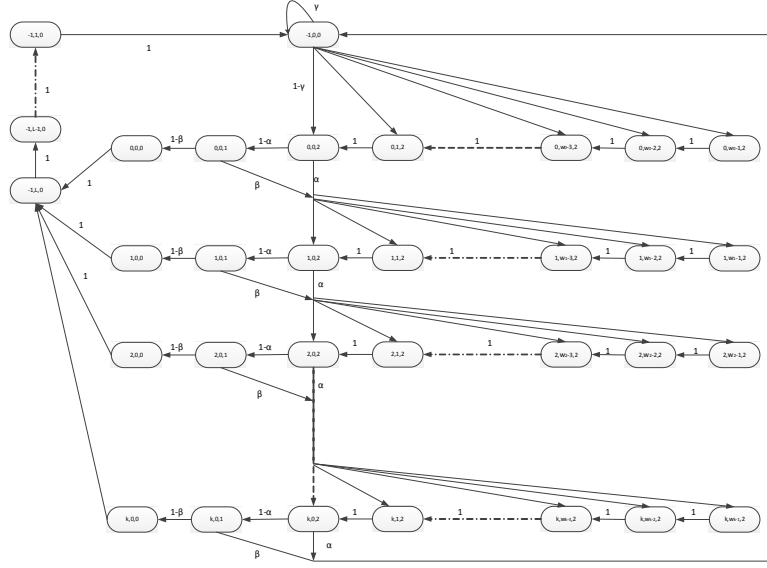


Fig. 4: Discrete Time Markov Chain Model.

$b$  backoff counter before performing CCA1  $\alpha$  busy medium probability during CCA1  $\beta$  busy medium probability during CCA2  $\gamma$  probability of node having no data to send

Suppose stationary probabilities of Markov chain is:  $b_{k,b,c} = P\{NB(t)=k, BC(t)=b, CW(t) = c\} \forall k,b,c$

From the markov chain model, we obtain

$$b_{k,0,2} = \alpha b_{k-1,0,2} + \beta b_{k-1,0,1} \quad k \in [1, m] \quad (4)$$

From the Markov chain, we know that:

$$b_{-1,0,0} = p_{cf} + b_{-1,t,0} + \gamma b_{-1,0,0} \quad (5)$$

Here,  $p_{cf}$  is probability of channel access failure,

$$p_{cf} = \alpha b_{m,0,2} + \beta b_{m,0,1} \quad (6)$$

All these states are determined by following equations 7 to 14

$$b_{k,0,0} = (1 - \beta) b_{0,0,1} \quad (7)$$

$$b_{k,0,2} = b_{0,0,2} (\alpha + \beta - \alpha\beta)^k \quad (8)$$

$$b_{k,0,1} = b_{0,0,2} (1 - \alpha) (\alpha + \beta - \alpha\beta)^k \quad (9)$$

Similarly  $b_{k,0,0}$  is calculated as:

$$b_{k,0,0} = b_{0,0,2}(1 - \beta)(1 - \alpha)(\alpha + \beta - \alpha\beta)^k \quad (10)$$

$$b_{k,0,0} = b_{0,0,2}(1 - (\alpha + \beta - \alpha\beta)^{k+1}), k \in [0, m] \quad (11)$$

$$b_{k,0,0} = b_{-1,t,0} = b_{-1,t-1,0}, t \in [2, T] \quad (12)$$

$$b_{0,0,2} = b_{-1,0,0}(1 - \gamma) \quad (13)$$

$$b_{-1,0,0} = (b_{0,0,2})/(1 - \gamma) \quad (14)$$

$b_{k,p,2}$  can be represented with  $b_{0,0,2}$  as:

$$b_{k,p,2} = b_{0,0,2}(\alpha + \beta - \alpha\beta)^k (W_k - p)/(W_k), k \in [1, m], p \in [1, W_k - 1] \quad (15)$$

Similarly  $b_{0,p,2}$  can be represented with  $b_{0,0,2}$  as:

$$b_{0,p,2} = b_{-1,0,0}(W_0 - p)(1 - \gamma)/(W_0) \quad (16)$$

By simultaneously solving 13 and 16, we get:

$$b_{0,p,2} = b_{0,0,2}(W_0 - p)/(W_0), \text{ Here } p \in [1, W_0 - 1] \quad (17)$$

As sum of all the probabilities of the states is always one, we have:

$$\begin{aligned} b_{-1,0,0} + \sum_{k=0}^m b_{k,0,1} + \sum_{k=1}^m b_{k,0,2} + \sum_{k=1}^m \sum_{p=1}^{W_k-1} b_{k,p,2} \\ + \sum_{p=1}^{W_0-1} b_{0,p,2} + \sum_{t=1}^T b_{-1,t,0} = 1 \end{aligned} \quad (18)$$

By replacing values of each state mentioned in eq.18 and by simplifying, we get:

$$\begin{aligned} b_{0,0,2} = \frac{1}{\frac{1}{1-\gamma} + (1 - (\alpha + \beta - \alpha\beta)^{m+1})T + \frac{(2-\alpha)(1-(\alpha+\beta-\alpha\beta)^{m+1})}{(1-(\alpha+\beta-\alpha\beta))}} \\ + \sum_{k=0}^m \left(\frac{W_k-1}{2}\right)(\alpha + \beta - \alpha\beta)^k \end{aligned} \quad (19)$$



Table 2: Simulation Parameters

Parameters	Value
Number of Nodes	10
Data Rate	250Kbps
Offered Load (bits)	484 to 6776
<i>aUnitBackoffPeriod</i> (Symbols)	10:10:50
Turnaround time (Sec)	0.000192
<i>macAckWaitDuration</i>	0.000864
<i>macMaxCSMABackoff</i>	4
<i>aMaxFrameRetries</i>	3

## 6 Analysis with Results

It is evident from (1) and (2) that  $SD$  and  $BI$  depend on  $aUnitBackoffPeriod$ . As per CSMA/CA flow chart in Fig. 3, each transmitting node has to wait for random number of backoff period. Due to the significance of backoff period length, the performance of CSMA/CA is analyzed by varying the backoff period's length. The simulation analysis includes node's average wait time before transmitting, probability of channel access busy during CCA1 and CCA2. Analysis also comprises of throughput, reliability and transmission failure probability. All these results are analyzed by increasing load. The simulation parameters are briefly summarized in Table 2.

### 6.1 Busy Channel Probability During CCA1

Each data transmitting node senses the medium availability after completing its random backoff count. If  $\tau$  is the probability of transmitting a packet which is computed by markov chain as:

$$\tau = \sum_{t=1}^T b_{-1,t,0} (1 - (\alpha + \beta - \alpha\beta)^{m+1}) \times T \times b_{0,0,2} \quad (20)$$

then busy channel probability during first attempt ( $\alpha$ ) is computed as:  
 $\alpha = [L(1 - (1 - \tau)^{N-1})(1 - \alpha)(1 - \beta)] + \dots$

$$L_{ack} \frac{N_{\tau}(1 - \tau)^{N-1}(1 - (1 - \tau)^{N-1})(1 - \alpha)(1 - \beta)}{1 - (1 - \tau)^N} \quad (21)$$

$$\alpha = (1 - \alpha)(1 - \beta)(1 - (1 - \tau)^{N-1}) \dots$$

$$\left[ L + \frac{L_{ack}(N_{\tau}(1 - \tau)^{N-1})}{1 - (1 - \tau)^N} \right] \quad (22)$$

where  $L$  is data frame length in slots,  $L_{ack}$  is length of Acknowledgment frame and  $[1 - (1 - \tau)^{N-1}]$  is collision probability. It happens when one of the remaining nodes also transmit data in same backoff slot.

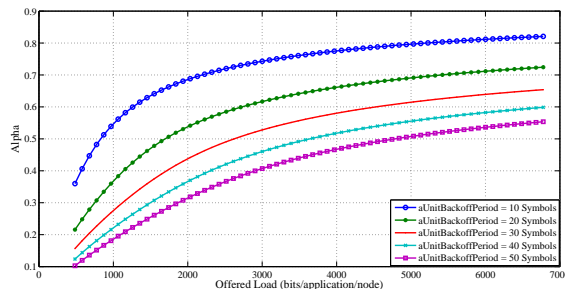


Fig. 5: Busy channel probability during CCA1

Results shown in Fig. 5 illustrates that increase in traffic load increases the  $\alpha$  probability. This is because of busy channel for most of the time. The results further show that reduced backoff period length increases the busy channel probability during CCA1 and vice versa.

## 6.2 Channel Assess Busy Probability During CCA2

CSMA/CA algorithm describes that value of CW is decremented by 1 when a node finds the channel idle during CCA1. At the start of next backoff period, node senses the medium availability for the second successive time. CCA2 is computed as:

$$\beta = \frac{1 - (1 - \tau)^{N-1} + N\tau(1 - \tau)^{N-1}}{2 - (1 - \tau)^N + N\tau(1 - \tau)^{N-1}} \quad (23)$$

Here  $\beta$  is probability to find medium busy during CCA2.

Figure 6 illustrates that there is comparably less probability of finding channel busy during CCA2 as of CCA1. This happens because CCA2 sensed the medium in very next slot instead of waiting for backoff period. Here probability of finding channel busy are similar for different backoff period lengths however it rises more with applied load where backoff period length is higher.

## 6.3 Wait Time

Average wait time of a network is the time for which networking nodes have to wait before transmitting the data packets due to busy medium. It is noted that node's waiting time is more when backoff period length is higher as shown in Fig. 7. This is due to the fact that nodes have to wait for longer time due to longer backoff period as of the shorter backoff period length.

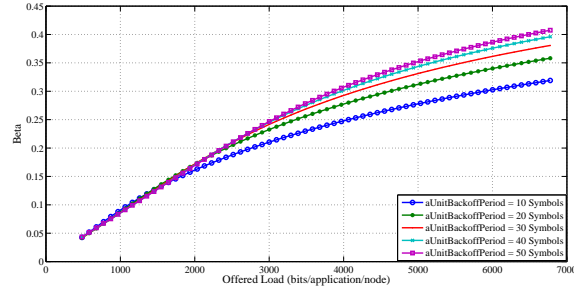


Fig. 6: Busy channel probability during CCA2

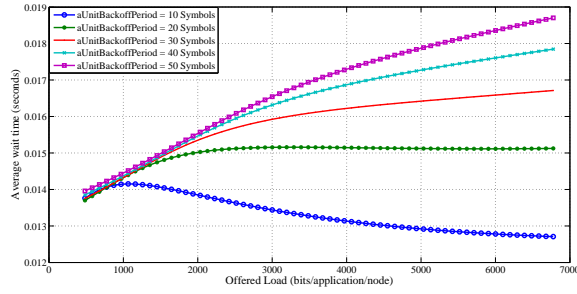


Fig. 7: Average wait time before transmitting

#### 6.4 Reliability

Reliability of a network is based on the successful transmission of data packets from source towards destination. Following are the two reasons of data packet failure.

1. A node could not transmit its data packet as medium remains busy for such time when  $NB_j \text{macmaxcsmabackoff}$ .
2. A node transmits the data packet again and again until the retry limits ( $P_{cr}$ ) exceeds  $aMaxFrameRetries$  and no acknowledgment frame is received.

Reliability of a network is calculated as:

$$Reliability = 1 - P_{cf} - P_{cr} \quad (24)$$

Results in Fig. 8 show that a network is more reliable with reduced load and less reliable with increased load. Longer Backoff Period length increases the reliability of successful transmission.

#### 6.5 Average Throughput

Average throughput is defined as number of successful data over total time through a medium. Figure 9 shows that the larger backoff period length achieves higher throughput compared to the smaller backoff period length.

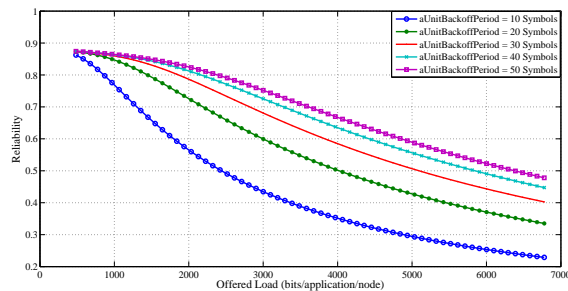


Fig. 8: Network Reliability

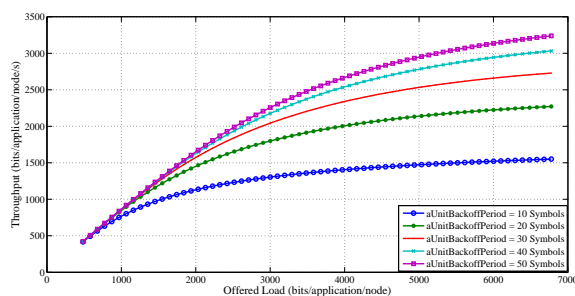


Fig. 9: Network Throughput

## 7 Conclusion

The paper analyzed the effect of varying backoff period on the performance of slotted csma/ca. Discrete Markov chain model is used to determine different probabilities of slotted CSMA/CA. Effect of same load variation has been analyzed by finding the probability during CCA1, CCA2. In addition failure probability along with reliability and throughput are also analyzed. Results show that the reliability of successful transmission increases with the increase in backoff period length due to less probability of collisions. However, it increases the node's waiting time before transmitting its frame in the medium. Therefore, reduction in chances of collision increases the power efficiency of nodes, which results in longer network life-time at the cost of longer waiting time.

## References

1. Zigbee Alliance, [www.zigbee.org](http://www.zigbee.org)
2. E. Callaway, *et al.* "Home networking with ieee 802.15.4: a developing standard for low-rate wireless personal area networks", IEEE Communications Magazine, 40(8), pp. 70-77, Aug 2002.
3. J. Gutierrez, *et al.* "Ieee 802.15.4: a developing standard for low-power low-cost wireless personal area networks", IEEE Network, 15(5), pp. 12-19, Sept.-Oct. 2001.

4. J. Zheng *et al.* "Will IEEE 802.15.4 make ubiquitous networking a reality?: a discussion on a potential low power, low bit rate standard", *IEEE Communications Magazine*, 42(6), pp. 140-146, June 2004.
5. D. Malone, *et al.*, "Modeling the 802.11 distributed coordination function in non-saturated heterogeneous conditions," *IEEE/ACM Trans. Netw.*, vol. 15, no. 1, pp. 159-172, Feb. 2007.
6. P. E. Engelstad *et al.*, "Non-saturation and saturation analysis of IEEE 802.11e EDCA with starvation prediction," in *Proc. ACM SIGMETRICS Int. Conf. Meas. Model. Comput. Syst.*, Banff, AB, Canada, Jun. 6-10, 2005, pp. 224-233.
7. O. Tickoo *et al.*, "Queueing analysis and delay mitigation in IEEE 802.11 random access MAC-based wireless networks," in *Proc. IEEE Conf. Comput. Commun.*, China, 2004, pp. 1404-1413.
8. G. Bianchi, "Performance analysis of the IEEE 802.11 distributed coordination function," *IEEE J. Sel. Areas Commun.*, vol. 18, no. 3, pp. 535-547, Mar. 2000.
9. B. Latré *et al.* "Throughput and delay analysis of unslotted IEEE 802.15.4", *JNW*, 1(1):20-28, 2006.
10. T. Kim *et al.* "Performance analysis of IEEE 802.15.4 with non-beacon-enabled CSMA/CA in non-saturated condition" In *Embedded and Ubiquitous Computing*, Vol. 4096 of *Lecture Notes in Computer Science*, pp. 884-893. Springer Berlin/Heidelberg, 2006.
11. M.-H. Zayani *et al.* "A joint model for IEEE 802.15.4 physical and medium access control layers", 7th International Wireless Communications and Mobile Computing Conference in (IWCMC), 2011, pp. 814-819, July 2011.
12. A. Koubaa *et al.* "A comprehensive simulation study of slotted CSMA/CA for IEEE 802.15.4 wireless sensor networks", *IEEE International Workshop on Factory Communication Systems*, pp. 183-192, 2006.
13. P. Jurcik *et al.* "A simulation model for the IEEE 802.15.4 protocol: Delay/throughput evaluation of the GTS mechanism", *Modeling, Analysis, and Simulation of Computer and Telecommunication Systems*, in *MASCOTS '07. 15th International Symposium on*, pp. 109-116, Oct. 2007.
14. S. Pollin *et al.* "Performance analysis of slotted carrier sense IEEE 802.15.4 medium access layer", In *Wireless Communications*, *IEEE Transactions on*, 7(9), pp. 3359-3371, September 2008.
15. C. Jung *et al.* "Enhanced Markov chain model and throughput analysis of the slotted CSMA/CA for IEEE 802.15.4 under unsaturated traffic conditions", *Vehicular Technology*, *IEEE Transactions on*, 58(1), pp. 473-478, Jan. 2009.
16. P. Park *et al.* "A generalized Markov chain model for effective analysis of slotted IEEE 802.15.4", *Mobile Adhoc and Sensor Systems In MASS '09. IEEE 6th International Conference on*, pp. 130-139, Oct. 2009.