



**HAL**  
open science

## Effects of non-linear GJ channels on the AP propagation : a modelling insight

Andela Davidović, Yves Coudière, Thomas Desplantez, Clair Poignard

### ► To cite this version:

Andela Davidović, Yves Coudière, Thomas Desplantez, Clair Poignard. Effects of non-linear GJ channels on the AP propagation : a modelling insight. 33RD ANNUAL MEETING OF THE EUROPEAN SECTION OF THE ISHR , Jul 2015, Bordeaux, France. hal-01418687

**HAL Id: hal-01418687**

**<https://inria.hal.science/hal-01418687v1>**

Submitted on 20 Dec 2016

**HAL** is a multi-disciplinary open access archive for the deposit and dissemination of scientific research documents, whether they are published or not. The documents may come from teaching and research institutions in France or abroad, or from public or private research centers.

L'archive ouverte pluridisciplinaire **HAL**, est destinée au dépôt et à la diffusion de documents scientifiques de niveau recherche, publiés ou non, émanant des établissements d'enseignement et de recherche français ou étrangers, des laboratoires publics ou privés.

## On Gap Junctions

### What is a Gap Junction?

- Cluster of gap junction channels
- Linking structure between neighbouring cells
- Provides direct passage of molecules and ions

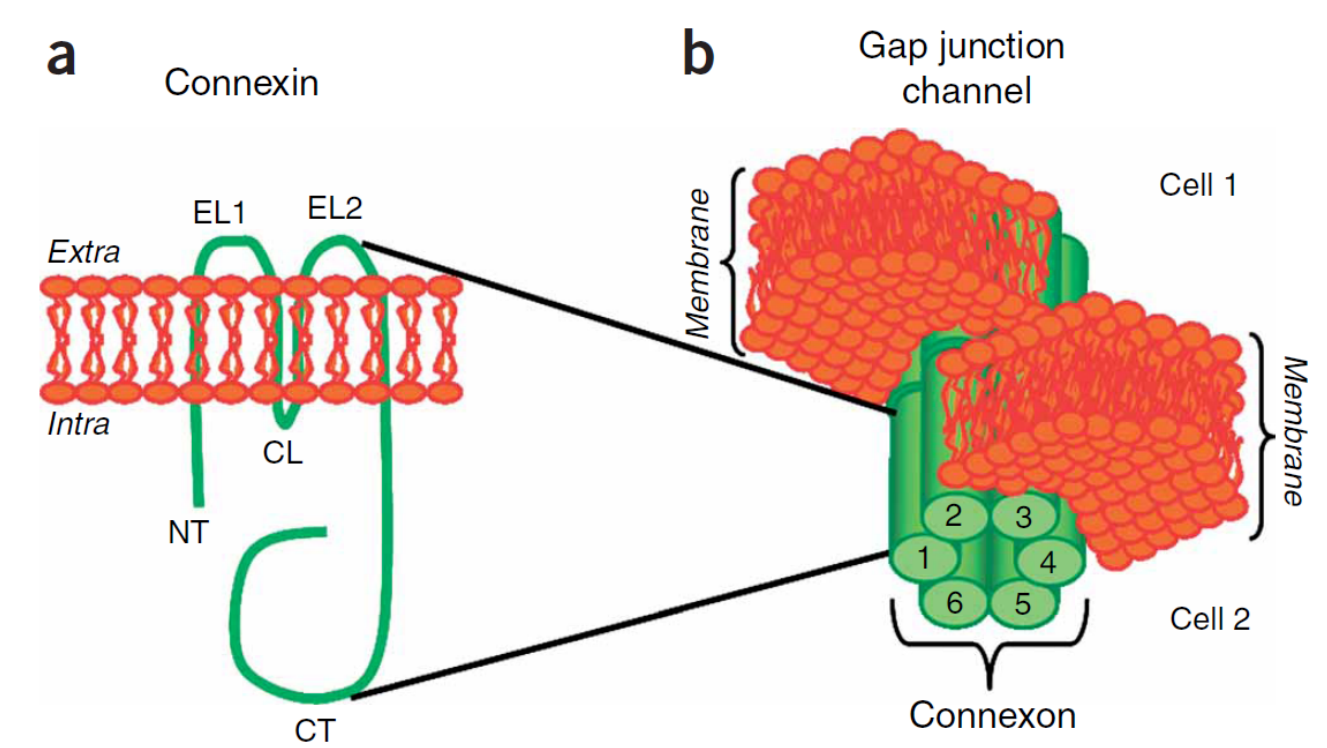


Figure : Schematic diagrams of a standard connexin molecule and gap junction channel. (Del Corso et. al., 2006)

### What are they made of?

- Proteins connexins.
- 6 connexins = 1 connexon (hemichannel)
- 2 connexons = 1 gap junction channel
- Cardiac cell proteins: Cx43, Cx45 and Cx40.

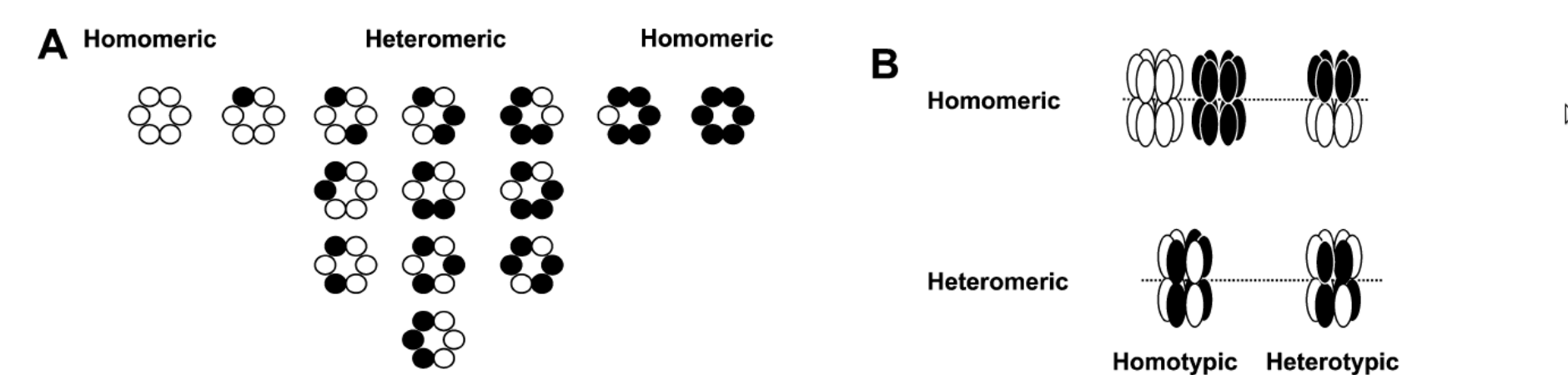


Figure : Predicted configurations of connexons and gap junction channels for two different connexins. (Desplantez, 2004)

### Where are they located in cardiac cells?

- Mostly on the longitudinal ends where they compose the intercalated disks
- The behaviour of transversal GJ channels is not well understood

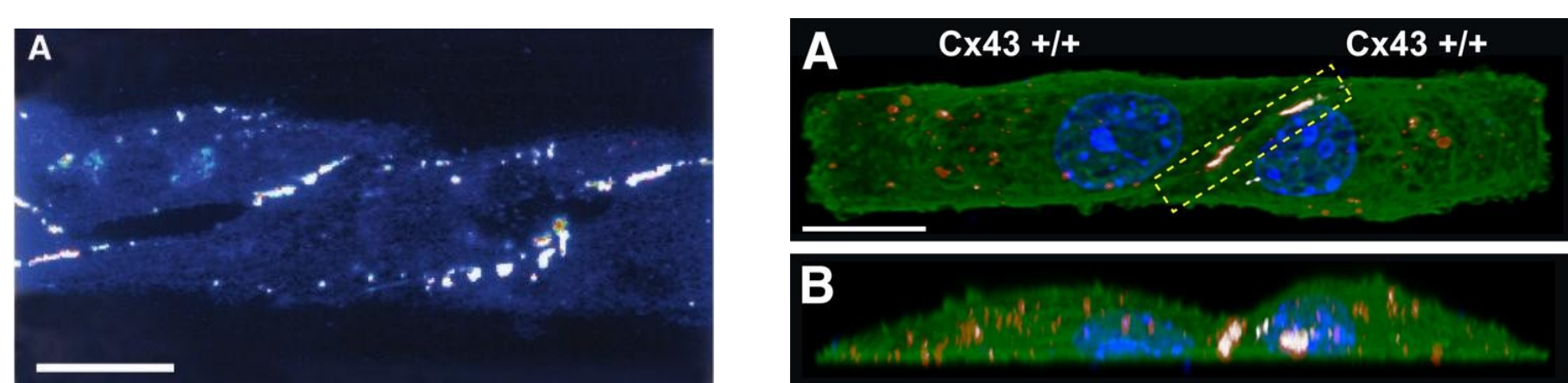
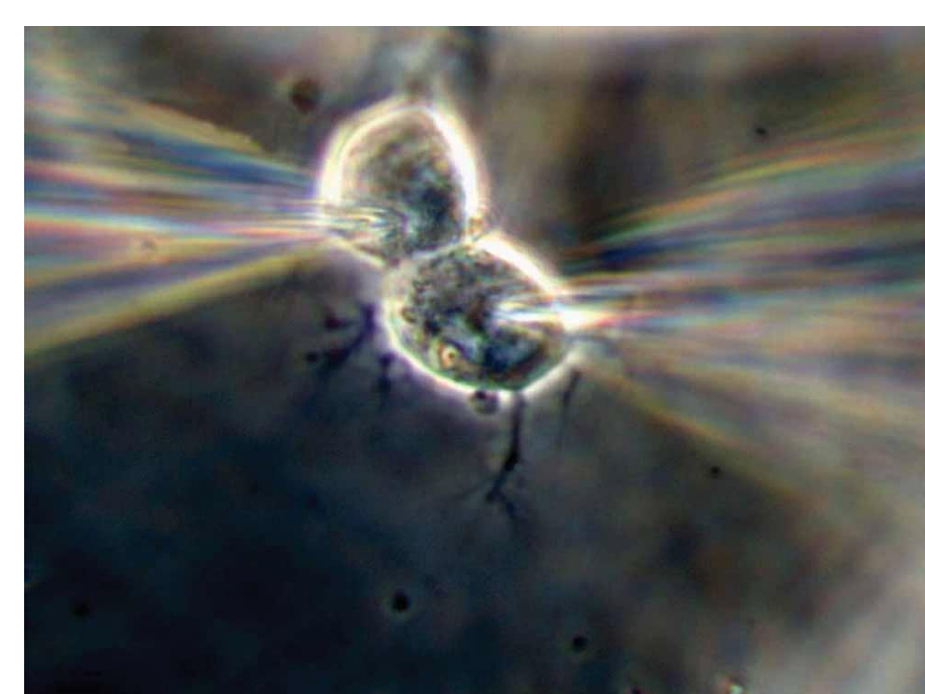


Figure : Immunohistochemical analysis of Cx43. Left: Bar = 10µm. (Beauchamp, 2004) Right: top view(A), lateral view(B). Bar = 5µm. (Beauchamp, 2012)

### Electrical behaviour?

- The dual voltage patch clamp
- Non-linear behaviour - gating of channels
- Dependent on connexin arrangement.



## Non linear GJ model - 0D

- GJ current:  $I_j = G_j(t, V_j)V_j$ , where  $V_j$  transjunctional voltage.

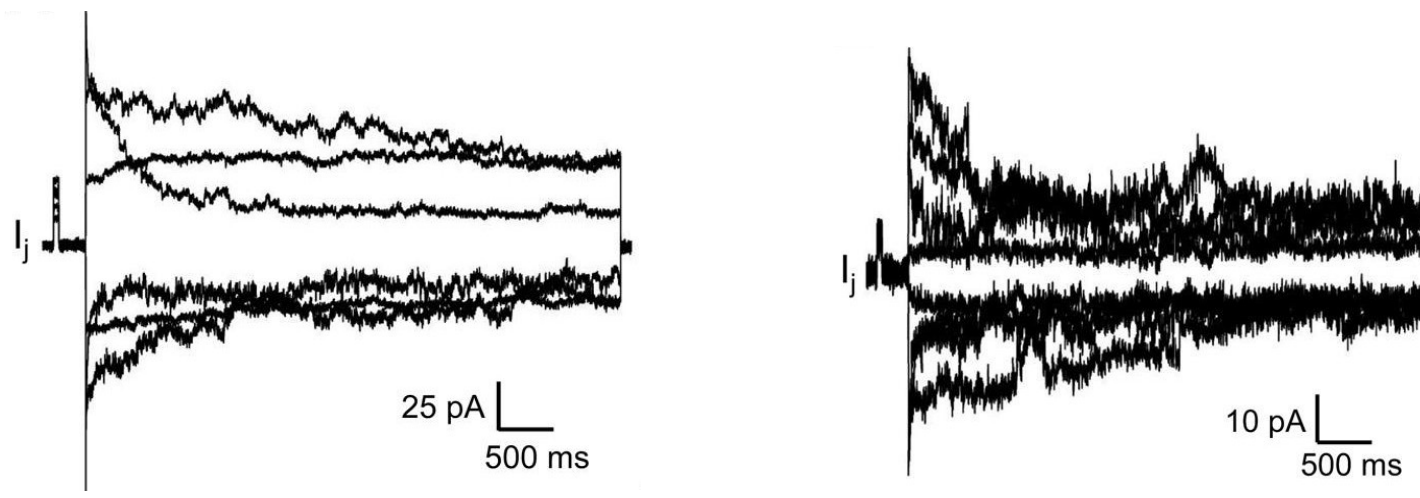
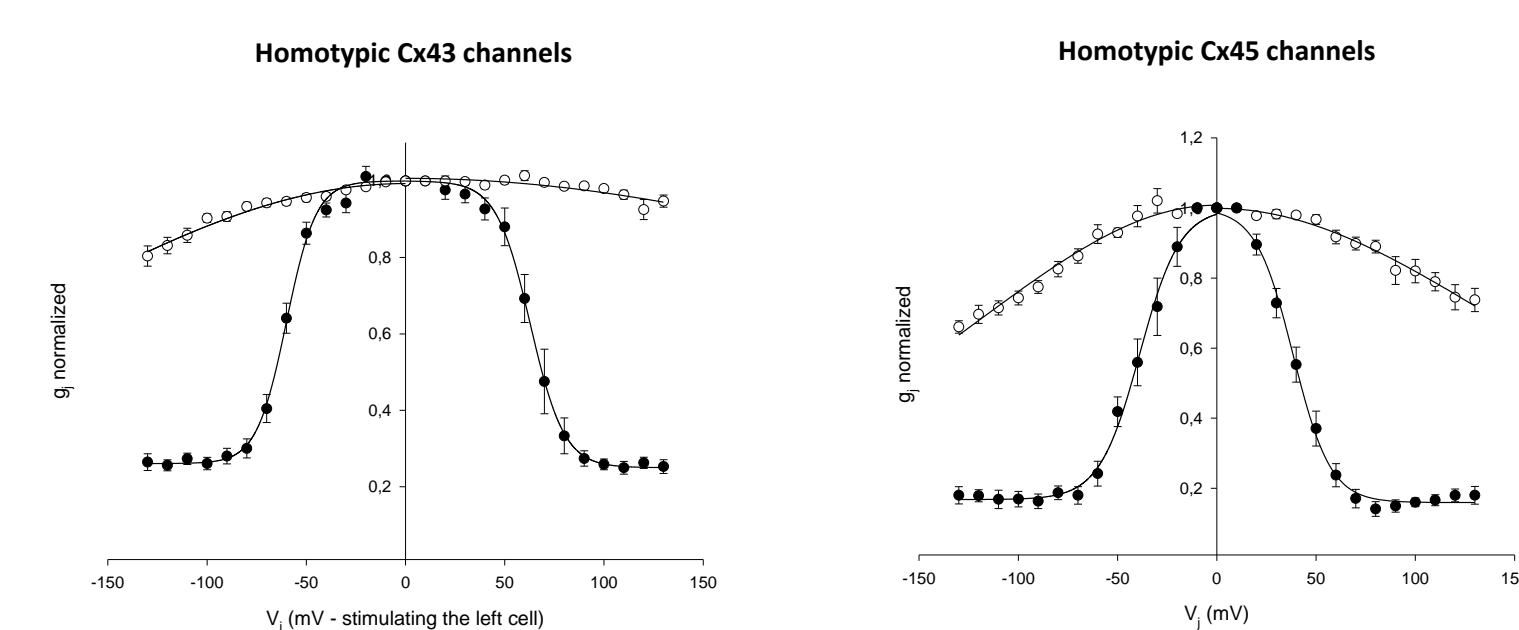


Figure : GJ currents in time, fixed  $V_j$ . Left: Homotypic Cx43/Cx43 cell pairs. Right: Cx43KO/Cx43KO cell pairs.

- Conductance:  $G_j(t, V_j) = g_{j,0}g_j(t, V_j)$ .
- The amplitude of the junctional conductance:  $g_{j,0} = 68nS$  for Cx43 cells, i.e.  $g_{j,0} = 2nS$  for Cx43KO.
- Gating variable:  $g_j = g_j(t, V_j)$

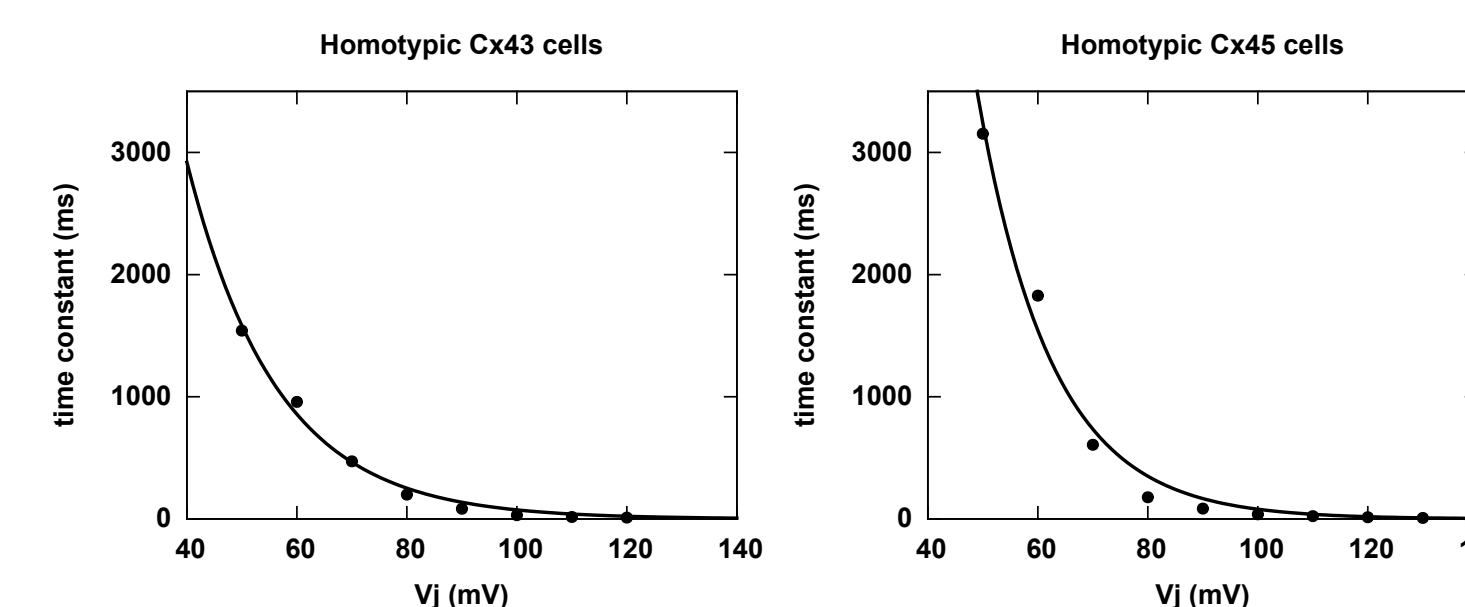
$$\frac{dg_j}{dt} = \frac{g_\infty(V_j) - g_j}{\tau_\infty(V_j)}$$

- Fit experimental data to find normalised  $g_\infty(V_j)$ .



Dual voltage clamp recordings performed in stably transfected (single transfection) HeLa cells

- Fit experimental data to find  $\tau_\infty(V_j)$ .



## Macroscopic effects

- Primary cultures of Cx43 WT and Cx43KO ventricular myocytes.
- Macroscopic velocity was calculated from the difference in mean activation time within regions of interest.

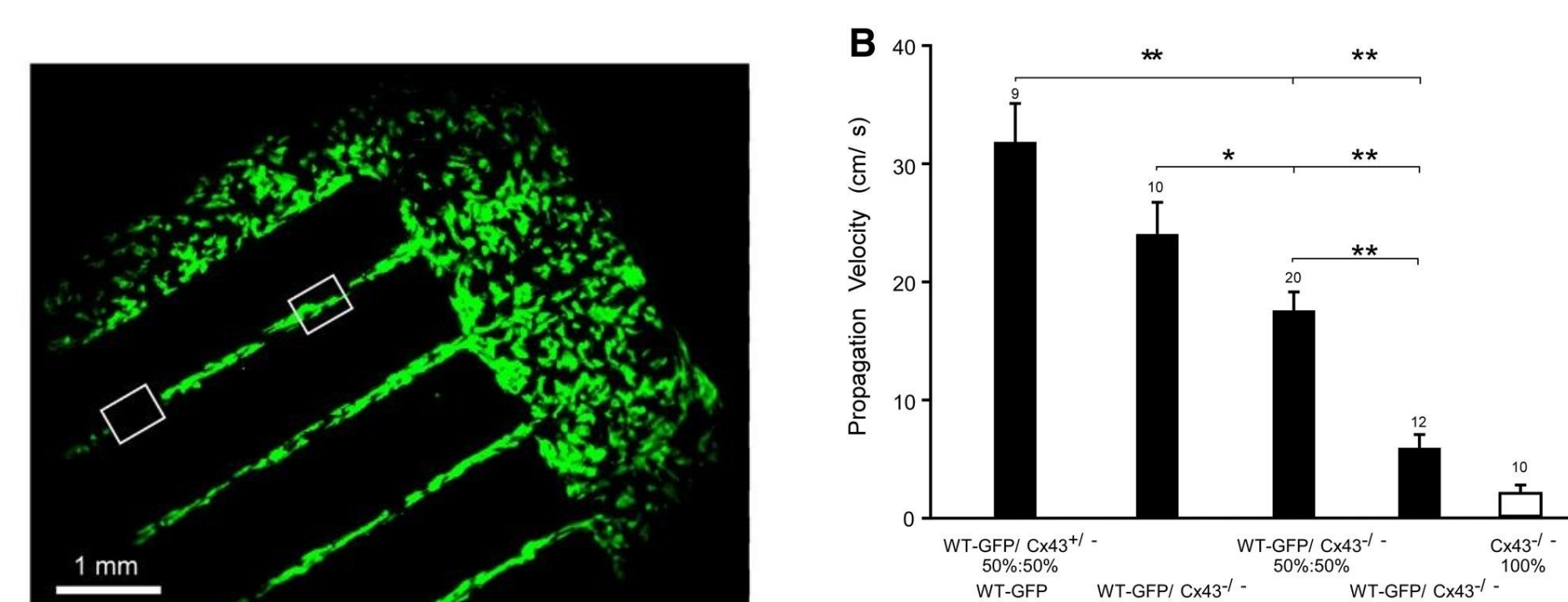


Figure : Left: A mixed patterned cell culture at low magnification. Right: Decrease in velocity of propagation w.r.t. presence of Cx43 cells.

## Assumptions

- Use only homotypic Cx43 and Cx45 GJ channels.
- GJ channels are at the perimeters of the cells, on the membrane.
- The rest of the membrane has only ionic channels. Use Beeler Reuter ionic model.

## 2D/3D mathematical microscopic model

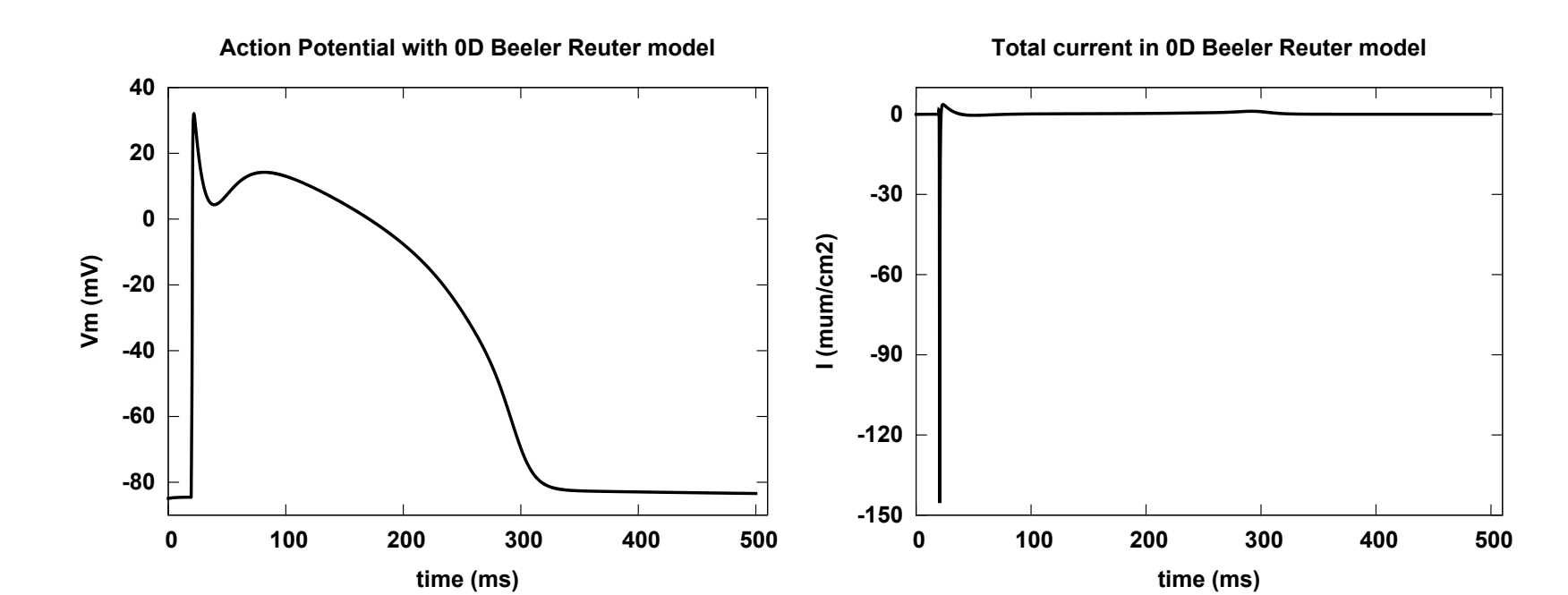
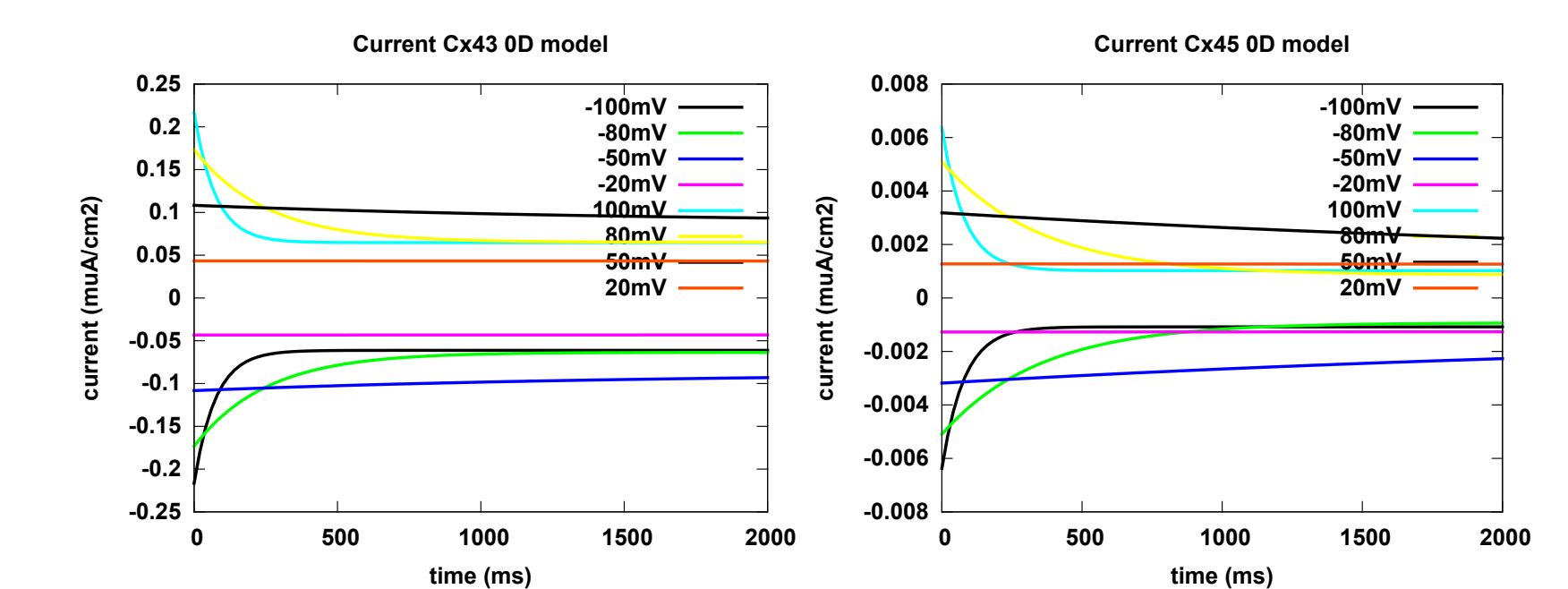
- $\sigma_i, \sigma_e$  intra and extracellular conductivities
- $\mathbf{h}$  gating variables for ionic model
- $V_m = u_i - u_e$  transmembrane potential,  $V_j = [u_i]$  transjunctional potential.

$$\begin{aligned} \sigma^i \Delta u^i &= 0, & \text{in } \Omega_i, \\ \sigma^e \Delta u^e &= 0, & \text{in } \Omega_e, \end{aligned}$$

$$\sigma^e \nabla u^e \cdot \mathbf{n} = I_{app}(t), \quad \text{on } \partial\Omega_e$$

$$\left. \begin{aligned} \partial_t V_m + I_{ion}(V_m, \mathbf{h}) &= \sigma^i \nabla u^i \cdot \mathbf{n}, \\ \partial_t V_m + I_{ion}(V_m, \mathbf{h}) &= -\sigma^e \nabla u^e \cdot \mathbf{n}, \\ \partial_t \mathbf{h} &= f_{ion}(V_j, \mathbf{h}), \end{aligned} \right\} \text{on } \Gamma_{ion}.$$

$$\left. \begin{aligned} G_j(V_j, g_j) \cdot V_j &= \sigma^i \nabla u^i \cdot \mathbf{n}, \\ \partial_t g_j &= f_j(V_m, g_j), \end{aligned} \right\} \text{on } \Gamma_j.$$



## Numerical analysis - 2D

- Tests on:  $2 \times 1$ ,  $4 \times 1$  and  $10 \times 1$  cells, cell size  $100 \times 20\mu m$ . Mesh step:  $dx = 0.005mm$ .
- Time:  $T = 300ms$ , time step:  $dt = 0.001ms$ . Explicit FE time scheme. Iterative method.
- Execution time on  $10 \times 1$  domain  $\approx 10h$ .

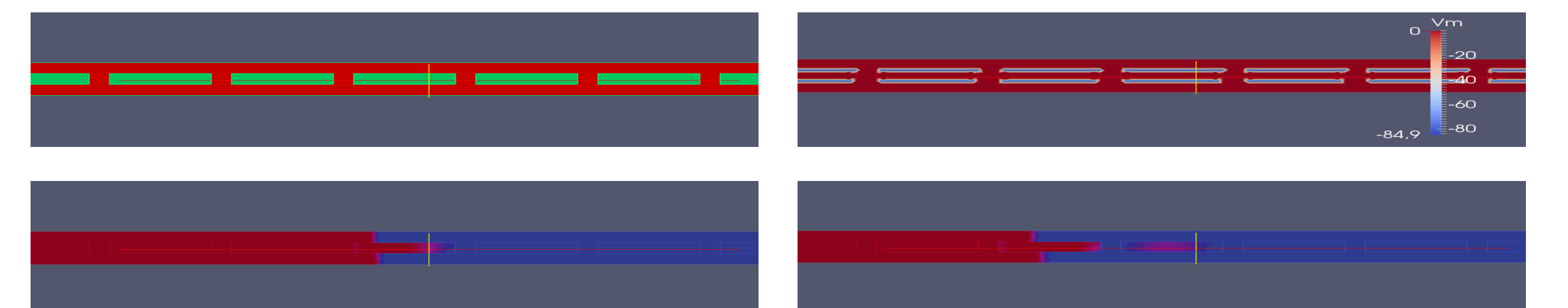


Figure : Up: domain of simulation and initial transmembrane potential. Bottom: propagation of the potential.

## Observations and Future work

- GJ facilitated the propagation in intracellular space.
- Almost NO change in GJ gates - mostly open. Hard to observe dynamics.
- Very small difference due to different GJ channels.

We need:

- Improve the model?
- Longer simulations. Larger domain.
- Try to observe dynamics of GJ channels by applying multiple stimuli.
- Move to HOMOGENISED model!