



HAL
open science

Modeling the wind circulation around mills with a Lagrangian stochastic approach

Mireille Bossy, Jose Espina, Jacques Morice, Cristian Paris, Antoine Rousseau

► **To cite this version:**

Mireille Bossy, Jose Espina, Jacques Morice, Cristian Paris, Antoine Rousseau. Modeling the wind circulation around mills with a Lagrangian stochastic approach. 2016. hal-01401140v1

HAL Id: hal-01401140

<https://inria.hal.science/hal-01401140v1>

Preprint submitted on 1 Jun 2021 (v1), last revised 23 Nov 2016 (v2)

HAL is a multi-disciplinary open access archive for the deposit and dissemination of scientific research documents, whether they are published or not. The documents may come from teaching and research institutions in France or abroad, or from public or private research centers.

L'archive ouverte pluridisciplinaire **HAL**, est destinée au dépôt et à la diffusion de documents scientifiques de niveau recherche, publiés ou non, émanant des établissements d'enseignement et de recherche français ou étrangers, des laboratoires publics ou privés.

Modeling the wind circulation around mills with a Lagrangian stochastic approach

Mireille Bossy^{*1}, José Espina², Jacques Morice^{†2}, Cristián Paris^{‡2}, and Antoine Rousseau^{§3}

¹Tosca Laboratory, Inria Sophia Antipolis – Méditerranée, France

²Inria, Chile

³Lemon Laboratory, Inria Sophia Antipolis – Méditerranée, France

September 7, 2016

Abstract

This work aims at introducing model methodology and numerical studies related to a Lagrangian stochastic approach applied to the computation of the wind circulation around mills. We adapt the Lagrangian *stochastic downscaling method* that we have introduced in [3] and [4] to the atmospheric boundary layer and we introduce here a Lagrangian version of the *actuator disc* methods to take account of the mills. We present our numerical method and numerical experiments in the case of non rotating and rotating actuator disc models. First, for validation purpose we compare some numerical experiments against wind tunnel measurements. Second we perform some numerical experiments at the atmospheric scale and present some features of our numerical method, in particular the computation of the probability distribution of the wind in the wake zone, as a byproduct of the fluid particle model and the associated PDF method.

Key words: Lagrangian stochastic model; PDF method; atmospheric boundary layer; actuator disc model

1 Introduction

Modeling the flow through wind turbines and wind farms is a research area of growing importance with the fast and worldwide development of installed wind farms. Therefore there exists a wide variety of approaches that combine atmospheric computational fluid dynamics methods (CFD) with wake models (from actuator disc models to full rotor computations, see eg. Sørensen and Myken [30], Hallanger and Sand [13], Bergmann and Iollo [2]).

Most popular atmospheric boundary layer computations are based on Reynolds averaged Navier-Stokes (RANS) turbulence models and large eddy simulation (LES) approaches. PDF methods, based on stochastic Lagrangian models, constitutes an interesting alternative (see the discussions in Pope [25]) that have been not yet fully developed in the case of atmospheric boundary layer modeling but are mostly used for reactive flows because this approach does not necessitate to approximate the reaction terms (Haworth [15], Minier and Peirano [21]). Among the reasons that can explain this phenomena, we can first rise the fact that such kinds of models handle nonlinear stochastic differential equations that necessitate a background on stochastic calculus, rather than classical PDE analysis. Second, the development of numerical solvers, based on stochastic particles approximation, requires the design of a hybrid Lagrangian/Eulerian algorithm from scratch. However, it is worth mentioning PDF methods are computationally inexpensive and allow to refine the space scale without any numerical constraints.

In recent works, some of the authors developed modeling numerical frameworks for the downscaling problem in meteorology (see [3],[4]). An algorithm called *Stochastic Downscaling Method* (SDM) is currently under validation when coupled with a coarse resolution wind prediction, provided thanks to classical numerical weather prediction (NWP) solvers. Quite a few widely used predictive numerical solvers (such as the weather research &

*mireille.bossy@inria.fr

†jacques.morice@inria.cl

‡cristian.paris@inria.cl

§antoine.rousseau@inria.fr

forecasting model (WRF)) are based on a LES approach. To this purpose, we have developed a branch of SDM that includes atmospheric boundary layer modeling and ground interaction (log law).

In this paper, we present our methodology to introduce wake models (typically actuator disc models) in the SDM solver. We also present the related numerical experiments on wake computation, in a classical log law context.

We emphasize the fact that the basis of stochastic Lagrangian models consists in describing the stochastic dynamics of a fluid particle's state variables (X_t, U_t) , under an appropriated probabilistic space $(\Omega, \mathcal{F}, \mathbb{P})$ equipped with the expectation operator \mathbb{E} . The Lagrangian approach allows to define the Eulerian average of the velocity, classically represented by the bracket operator $\langle U \rangle$ in the RANS approach or \tilde{U} in the LES approach, as the mathematical conditional expectation¹ of the particle velocity U_t knowing its position $\mathbf{x} \in \mathbb{R}^3$

$$\langle U \rangle(t, \mathbf{x}) := \mathbb{E}[U_t | X_t = \mathbf{x}], \quad (1.1)$$

and more generally, for any function f ,

$$\langle f(U) \rangle(t, \mathbf{x}) := \mathbb{E}[f(U_t) | X_t = \mathbf{x}]. \quad (1.2)$$

Equivalently, in term of PDF² modeling approach (see [25] for further details) the Eulerian density at time t and at a given x is identified with the conditioned Lagrangian density, knowing the event $\{X_t = x\}$.

The connections between RANS/LES models and stochastic Lagrangian models are realized via a specific design of the stochastic equation coefficients for (X_t, U_t) allowing to reproduce $k - \varepsilon$ and Reynolds-stress models (see the review on Lagrangian modeling in Pope [24] and the discussion in [4]). In particular such PDF models can be used to reconstitute subgrid information of fluctuations in LES modeling.

After a short description of the SDM modeling, mathematical framework, and numerical method in Section 2, we introduce our Lagrangian version of the actuator disc modeling in Section 3. For validation purpose, in Section 4 we compare some numerical experiments against wind tunnel measurements. Section 5 is devoted to some numerical experiments at the atmospheric scale. To assess the mill impact in the flow, SDM simulations are run in both experiments with the two turbine models presented in Section 3, namely: the *non-rotating actuator disc* model, and the *rotating actuator disc* model.

2 Stochastic downscaling methodology

This section is devoted to the description of the *Stochastic Downscaling Method*, in the framework of turbulence modeling of an incompressible flow in the neutral case (constant mass density).

Consider the computational domain \mathcal{D} as an open bounded subset of \mathbb{R}^3 . In order to model the flow in \mathcal{D} , we consider a couple of stochastic processes (X_t, U_t) that respectively describe the location and the velocity of a generic fluid-particle. The evolution of (X_t, U_t) is governed by the following generic system of stochastic differential equations (SDEs):

$$dX_t = U_t dt, \quad (2.1a)$$

$$dU_t = \left(-\frac{1}{\varrho} \nabla_x \langle \mathcal{P} \rangle(t, X_t) \right) dt - G(t, X_t) \left(U_t - \langle U \rangle(t, X_t) \right) dt + C(t, X_t) dW_t. \quad (2.1b)$$

Here W is a standard 3-dimensional Brownian motion, G , C and U_{ext} are functions to be defined in accordance with the turbulence underlying model (see Section 2.3 below), and $X(t=0) = X_0$, $U(t=0) = U_0$ where (X_0, U_0) are random variables whose probability law μ_0 is given. The parameter ϱ is the mass density of the fluid (which is assumed to be constant).

We supplement the dynamics (2.1), with generic (Dirichlet) boundary conditions on the mean velocity:

$$\langle U \rangle(t, \mathbf{x}) := \mathbb{E}[U_t | X_t = \mathbf{x}] = U_{\text{ext}}(t, \mathbf{x}), \quad (2.2)$$

when $\mathbf{x} = (x, y, z)$ belongs to the lateral-boundary part or top-boundary part of $\partial\mathcal{D}$. The bottom-boundary condition that should account for the surface roughness is described in Section 2.4.

¹We consider here only the case of constant mass density, for the sake of clarity. In other cases a scalar state variable is introduced such as temperature, that weights the conditional expectation operator.

²Probability Density Function

2.1 Mathematical framework

According to (1.1), the term $\langle U \rangle(t, X_t) = \mathbb{E}[U_t | X_t]$ denotes the expected velocity of the particle conditioned by its position X_t , making the equation (2.1) a nonlinear SDEs in the sense of McKean. This means that a Markovian solution to (1.1) must be a process $((X_t, U_t); 0 \leq t \leq T)$ complemented with the set of its time-marginal laws $\rho(t)$ of (X_t, U_t) at any time $0 \leq t \leq T$, which allows to define (assuming the existence of densities for the marginal laws $\rho(t)$)

$$\mathbb{E}[f(U_t) | X_t = x]$$

for any measurable function f , as the conditional Lagrangian mean

$$\frac{\int_{\mathbb{R}^3} f(u) \rho(t, x, u) du}{\int_{\mathbb{R}^3} \rho(t, x, u) du}$$

whenever the marginal mass $\int_{\mathbb{R}^3} \rho(t, x, u) du$ is positive. In the framework of turbulent modeling this conditional Lagrangian mean is then identified to the Eulerian mean (see Pope [25] and the references therein)

In a series of papers, (see in particular Bossy and Jabir [6], Bossy, Jabin, Jabir and Fontbona [5], and references therein), the wellposedness of toy-models version of stochastic Lagrangian models, typically with drift coefficients of the velocity equation expressed as conditional expectation with respect to position, was initiated.

The wellposedness of the stochastic process $((X_t, U_t); 0 \leq t \leq T)$, for any arbitrary finite time $T > 0$, whose time-evolution is given by the McKean-nonlinear SDE

$$\begin{cases} X_t = X_0 + \int_0^t U_s ds, \\ U_t = U_0 + \int_0^t B[X_s; \rho(s)] ds + \sigma W_t, \end{cases} \quad \text{where } \rho(t) \text{ is the density law of } (X_t, U_t) \text{ for all } t \in (0, T], \quad (2.3)$$

can be found in [6], where W is a standard \mathbb{R}^d -Brownian motion, the diffusion σ is a positive constant, and the drift coefficient $(x, \psi) \mapsto B(x, \psi)$ is the mapping from $\mathcal{D} \times L^1(\mathcal{D} \times \mathbb{R}^d)$ to \mathbb{R}^d defined by

$$B[x; \psi] = \frac{\int_{\mathbb{R}^d} b(v) \psi(t, x, v) dv}{\int_{\mathbb{R}^d} \psi(t, x, v) dv} \mathbf{1}_{\{\int_{\mathbb{R}^d} \psi(t, x, v) dv \neq 0\}} \quad (2.4)$$

where $b : \mathbb{R}^d \rightarrow \mathbb{R}^d$ is a given bounded measurable function. This definition of the drift B makes the mapping $(t, x) \mapsto B[x; \rho(t)]$ coincides with $(t, x) \mapsto \mathbb{E}[b(U_t) | X_t = x]$ and the velocity equation rewrites

$$U_t = U_0 + \int_0^t \mathbb{E}[b(U_s) | X_s] ds + \sigma W_t$$

or equivalently, using the notation in (1.1)

$$dU_t = \langle b(U) \rangle(t, X_t) dt + \sigma dW_t.$$

Moreover a particle system, based on kernel regression estimator of the conditional expectation B is shown to converge weakly to the model (2.3). The construction of the particle approximation is based on local averaging estimate on a N -particle set $(X_t^i, U_t^i, i = 1, \dots, N, t \in [0, T])$ of

$$\mathbb{E}[b(U_t) | X_t = x] \quad \text{by} \quad \sum_{i=1}^N \mathcal{W}_{N,i}(x) b(U_t^i).$$

Well-known propositions for the weights $\mathcal{W}_{N,i}(x)$ are Nadaraya-Watson estimator

$$\mathcal{W}_{N,i}(x) = \frac{K_\epsilon(x - X^i)}{\sum_{j=1}^N K_\epsilon(x - X^j)},$$

for a well chosen kernel $K_\epsilon(x) = K(\frac{x}{\epsilon})$, and partitioning estimator

$$\mathcal{W}_{N,i}(x) = \frac{\mathbf{1}_{\{X^i \in \mathcal{B}_{M,j}\}}}{\sum_{k=1}^N \mathbf{1}_{\{X^k \in \mathcal{B}_{M,j}\}}}, \quad \text{for } x \in \mathcal{B}_{M,j}$$

given a M -partition $\mathcal{P}_M = \{\mathcal{B}_{M,1}, \mathcal{B}_{M,2}, \dots, \mathcal{B}_{M,M}\}$ of the domain. It is worth to notice that the algorithm complexity of a particle system based on kernel estimator is up to $\mathcal{O}(N^2)$ whereas the partitioning estimator version is up to $\mathcal{O}(N)$. We retained this last solution for SDM together with some refinement of Particle-in-cell (PIC) technics (see further details in [3, 4]).

Also a confined version of (2.3) by mean of specular reflection is shown to produce Dirichlet boundary condition, as mean no-permeability boundary condition:

$$\mathbb{E}[(U_t \cdot n_{\mathcal{D}}(X_t)) | X_t = x] = \langle U \cdot n_{\mathcal{D}} \rangle(t, x) = 0, \text{ for } dt \otimes d\sigma_{\partial\mathcal{D}}\text{-a.e. } (t, x) \in (0, T) \times \partial\mathcal{D}.$$

In [5], for \mathcal{D} equal to the torus \mathbb{R}/\mathbb{Z} (and with $(x) \bmod 1 := x - \lfloor x \rfloor$), a step is made in the wellposedness of Lagrangian equation with pressure term:

$$X_t = \left\lfloor X_0 + \int_0^t U_s ds \right\rfloor, \quad U_t = U_0 + \sigma W_t - \int_0^t \nabla_x P(s, X_s) ds - \beta \int_0^t (U_s - \alpha \mathbb{E}(U_s | X_s)) ds \quad (2.5a)$$

$$\text{law}(X_0, U_0) = \rho_0(x, u) dx du, \quad (2.5b)$$

$$\mathbb{P}(X_t \in dx) = dx, \text{ for all } t \in [0, T], \quad (2.5c)$$

For now on, and under drastic hypotheses on the initial condition law, only analytical solutions of the Fokker-Planck equation associated to (2.5) is established. This first step contributes to analyze the role of the gradient pressure term to guarantee the incompressibility constraint on the Eulerian velocity and constant mass density. In the modeling of turbulent flow, the constraint (2.5c) is indeed formulated heuristically (see e.g. [24]) by rather imposing some divergence free property on the flow, which in the case of system (2.5) would correspond to a divergence free condition on the bulk velocity field:

$$\nabla_x \cdot \mathbb{E}[U_t | X_t = x] = 0.$$

By taking the divergence of a formal equation for the bulk velocity derived from the Fokker-Planck equation, and a classical projection argument on the space of divergence free fields, it is then assumed that the field P verifies an elliptic PDE, which in our notation is written as

$$\Delta_x P = - \sum_{i,j=1}^d \partial_{x_i x_j} \mathbb{E} \left[U_t^{(i)} U_t^{(j)} | X_t = x \right] \quad (2.6)$$

(see [25] for a precise formulation).

2.2 Generic numerical scheme

We present hereafter the numerical discretization of equations (2.1). It consists in one main time loop in which we identified three main steps: see Algorithm 1. The interested reader may refer to [3, 4] for additional details. In particular, the link between Lagrangian and Eulerian fields (*i.e.* between particles and mesh) is established thanks to classical *particle-in-cell* (PIC) methods (see Raviart [27]), which are thus used to compute conditional expectations (1.1) and (1.2). The domain \mathcal{D} is divided in partitioning cells defined from a Cartesian regular mesh. We denote N_p the total number of particles in the computation, N_{pc} is the number of particles per cell, that is maintained constant in the time step procedure, by the effect of the mass conservation constraint.

In the case where the *nearest grid point* method (spline of order 0) is used, any conditional expectation such as (1.2) is computed in each cell $\mathcal{C}(i, j, k)$ thanks to an average value over the N_{pc} particles located in the cell:

$$\langle\langle f(U) \rangle\rangle(t, x_{i,j,k}) = \frac{1}{N_{pc}} \sum_{p \in \mathcal{C}(i,j,k)} f(U^p(t)). \quad (2.7)$$

This approach coincides with the partitioning estimator described at Section 2.1.

For robustness considerations (see Appendix A), we consider an exponential version of the explicit Euler scheme for the prediction Step (1). We propose in Step (2) an original method to confine particles in \mathcal{D} according to the following downscaling principle: the inferred Eulerian velocity field satisfies the Dirichlet condition (2.2).

At time $t_{n-1} = t_0 + (n-1)\Delta t$, the N_p Lagrangian variables $(X_{n-1}^p, U_{n-1}^p) := (X_{n-1}^{p, N_p}, U_{n-1}^{p, N_p})$ are known, as well as the statistics k_{n-1} and $\langle U_{n-1} \rangle$ in each cell \mathcal{C} of the partition of

$$\mathcal{D} = \bigcup_{i=1}^{N_c} \mathcal{C}_i.$$

Algorithm 1 – Time-Step in SDM

while $t_0 + n\Delta t < T_{\text{final}}$ **do**

- (1) Prediction step: move particles thanks to a partial exponential scheme.
- (2) Account for boundary conditions
- (3) Correction step: conservation constraints ensuring constant density and free divergence.

end while

At time t_n , for each particle p :

Step 1. Prediction: we compute the following quantities

- The particle position $\tilde{X}_n^p = X_{n-1}^p + \Delta t U_{n-1}^p$
- The velocity \tilde{U}_n^p is calculated applying an exponential Euler scheme to the SDE (see Appendix A)

$$d\tilde{U}_t^p = -G(t_{n-1}, X_{n-1}^p) \left(\tilde{U}_t^p - \langle U_{n-1} \rangle \right) dt + C(t_{n-1}, X_{n-1}^p) dW_t, \quad t \in [t_{n-1}, t_n], \quad (2.8)$$

where $\langle U_{n-1} \rangle$, k_{n-1} and ε_{n-1} are evaluated in the cell containing X_{n-1}^p .

If $\tilde{X}_n^p \in \mathcal{D}$, then set $X_n^p = \tilde{X}_n^p$ and $U_n^p = \tilde{U}_n^p$.

Step 2. Boundary condition: When $\tilde{X}_n^p \notin \mathcal{D}$; let t_{out} be the boundary hitting time after t_{n-1} , and $X_{\text{out}}^p = X_{n-1}^p + (t_{\text{out}} - t_{n-1})U_{n-1}^p$ be the hitting position, then the reflected position is set to

$$X_n^p = X_{\text{out}}^p - (t_n - t_{\text{out}})U_{n-1}^p. \quad (2.9)$$

In concern of the velocity, we simulate Equation (2.8) between t_{n-1} and t_{out} with an exponential scheme to obtain the velocity $U_{t_{\text{out}}}^p$. Then, in order to match the boundary conditions, we impose a *jump* on the velocity at $t = t_{\text{out}}$:

$$U_{t_{\text{out}}}^p = 2U_{\text{ext}}(t_{n-1}, X_{\text{out}}^p) - U_{t_{\text{out}}}^p. \quad (2.10)$$

We finally compute U_n^p thanks to the numerical computation of Equation (2.8) between t_{out} and t_n .

Remark 2.1. In a three-dimensional domain, it may happen that X_n^p written in (2.9) remains outside the computational domain after the reflection, for instance in the neighborhood of the corners. In this case, the particle is replaced near the outward boundary and the new particle position is set to

$$X_n^p = X_{\text{out}}^p + \gamma,$$

where γ is a small vector pushing X_{out}^p back into \mathcal{D} . The new velocity U_n^p is unchanged.

Step 3. Conservation constraints: Once the N_p particles are advanced at time t_n ,

- move the particles such that there is exactly the same number N_{pc} of particles per cell to fulfill the mass density constraint. To this aim, we use the so-called triangular transport (see [3]) which consists in sequentially sorting the particle in each of the three space directions. This sequential 1D rearrangement corresponds to the solution of an optimal transport problem according to the uniform distribution).
- compute the new Eulerian quantities $\langle \tilde{U}_n \rangle$, and project the new Eulerian velocity field on the divergence free space. This may be done thanks to the classical resolution of a Poisson equation for the pressure, with homogeneous Neumann boundary conditions.

2.3 A specific Lagrangian model for the atmospheric boundary layer

We consider our computational domain \mathcal{D} in the neutral atmospheric boundary layer such as drawn in Figure 1. From floor to top, the height of \mathcal{D} is at most the approximate size of the atmospheric boundary layer, namely 600 to 1000 m (in Section 5, we shall perform our numerical simulations for a domain \mathcal{D} of height 300 m and 750 m).

We now detail the generic terms G , C in (2.1)–(2.2), and boundary conditions U_{ext} in order to model the atmospheric boundary layer. In what follows, all the Eulerian averages $\langle \cdot \rangle$ are in the sense of (1.2).

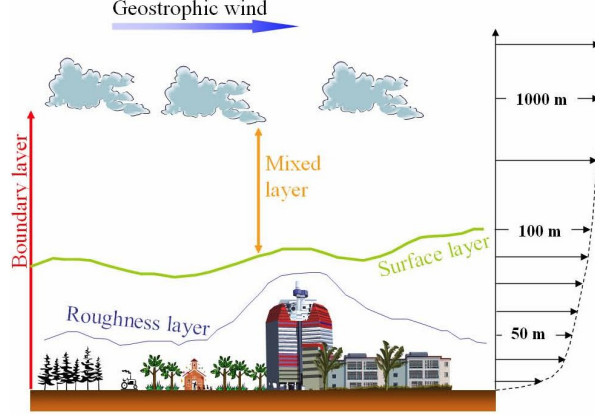


Figure 1: Schematic view of the atmospheric boundary layer. Courtesy of P. Drobninski [9].

Turbulence modeling

We use the classical notation for the velocity components (with numbering or with letters, depending on how it is convenient in the equations)

$$\mathbf{U}_t = (u_t^{(1)}, u_t^{(2)}, u_t^{(3)}) = (u_t, v_t, w_t).$$

Also for the components of the instantaneous turbulent velocity,

$$\mathbf{U}_t - \langle \mathbf{U} \rangle(t, \mathbf{X}_t) = (u_t'^{(1)}, u_t'^{(2)}, u_t'^{(3)}) = (u_t', v_t', w_t'),$$

for the turbulent kinetic energy (tke),

$$k(t, \mathbf{x}) = \frac{1}{2} (\langle u_t' u_t' \rangle + \langle v_t' v_t' \rangle + \langle w_t' w_t' \rangle),$$

and for $\mathcal{P} = \frac{1}{2}(\mathcal{P}_{11} + \mathcal{P}_{22} + \mathcal{P}_{33})$, the rate of turbulent energy production, with

$$\mathcal{P}_{ij} := - \sum_{k=1}^3 \left(\langle u'^{(i)} u'^{(k)} \rangle \frac{\partial \langle u'^{(j)} \rangle}{\partial x_k} + \langle u'^{(j)} u'^{(k)} \rangle \frac{\partial \langle u'^{(i)} \rangle}{\partial x_k} \right).$$

Turbulence models roughly consist in linking the turbulent kinetic energy k and the turbulent energy dissipation ε . In order to account for turbulence effects in the Lagrangian velocity equation (2.1b), we define its coefficients as:

$$C(t, \mathbf{x}) = \sqrt{C_0 \varepsilon(t, \mathbf{x})}, \quad (2.11a)$$

$$G_{i,j}(t, \mathbf{x}) = -\frac{C_R}{2} \frac{\varepsilon(t, \mathbf{x})}{k(t, \mathbf{x})} \delta_{ij} + C_2 \frac{\partial \langle u'^{(i)} \rangle}{\partial x_j}(t, \mathbf{x}). \quad (2.11b)$$

The tensor $G_{i,j}$ is related to the isotropization of turbulence production model (IP model) that accounts to the Reynolds-stress anisotropies (see Durbin and Speziale [11] and [25]) and C_0 is given by

$$C_0 = \frac{2}{3} \left(C_R + C_2 \frac{\mathcal{P}}{\varepsilon} - 1 \right). \quad (2.12)$$

The turbulent energy dissipation $\varepsilon(t, \mathbf{x})$ is recovered via the turbulent kinetic energy as a parametrization (see Drobninski et al. [10]),

$$\varepsilon(t, \mathbf{x}) = C_\varepsilon \frac{k^{3/2}(t, \mathbf{x})}{\ell_m(\mathbf{x})}. \quad (2.13)$$

It is worth to notice that the term $\varepsilon(t, \mathbf{x})/k(t, \mathbf{x})$ in the $G_{i,j}$ tensor is $C_\varepsilon \frac{k^{1/2}(t, \mathbf{x})}{\ell_m(\mathbf{x})}$. Thus when the turbulent kinetic energy k vanishes, all the terms in the particles dynamics (2.5, 2.11) stay well defined. As a local model,

possibly forced by dynamical boundary condition as in [3] or by a log law wind profile as in the following Sections 4 and 5, SDM is mainly pertinent in the turbulent part of the atmosphere. However, it can be observed that SDM well reproduces the decay of the turbulent kinetic energy in the boundary layer, and up to the geostrophic height, making vanished the tke k at the top, where the flow becomes laminar (see Figure 15).

The mixing length ℓ_m can be considered as constant away from the floor (above the surface layer). However, as can be seen in Carlotti [7], it should be proportional to the vertical coordinate z within the surface layer. A classical choice consists in a piecewise linear function for ℓ_m proportional to von Karman constant κ :

$$\ell_m(z) = \kappa(z - z_{\ell_m})\mathbb{1}_{[0, z_{\ell_m}]}(z) + \kappa z_{\ell_m}. \quad (2.14)$$

Putting together (1.2),(2.11) with the generic Eulerian average approximation formula (2.7), we obtain the following expression for the turbulent characteristics computed by SDM:

$$\begin{aligned} k(t, \mathbf{x}) &\simeq \frac{1}{2} (\langle u'u' \rangle(t, \mathbf{x}) + \langle v'v' \rangle(t, \mathbf{x}) + \langle w'w' \rangle(t, \mathbf{x})). \\ \mathcal{P}_{ij} &\simeq - \sum_{k=1}^3 \left(\langle u'^{(i)}u'^{(k)} \rangle \frac{\partial \langle u^{(j)} \rangle}{\partial x_k} + \langle u'^{(j)}u'^{(k)} \rangle \frac{\partial \langle u^{(i)} \rangle}{\partial x_k} \right) \\ G_{i,j}(t, \mathbf{x}) &\simeq -\frac{C_R}{2} C_\varepsilon \frac{k^{1/2}(t, \mathbf{x})}{\ell_m(\mathbf{x})} \delta_{ij} + C_2 \frac{\partial \langle u^{(i)} \rangle}{\partial x_j}(t, \mathbf{x}). \end{aligned} \quad (2.15)$$

Boundary conditions

As can be seen in Figure 1, our computational domain is bounded from above by the free troposphere where a geostrophic balance can be considered. As a consequence, we shall use Dirichlet boundary conditions at the top of the domain,

$$\langle \mathbf{U} \rangle(t, \mathbf{x}) = U_G(t, \mathbf{x}), \quad (2.16)$$

where U_G is given, corresponding to the output of a geostrophic model.

The bottom boundary condition should account for the surface roughness and corresponding layer: we incorporate a log law in our model, such as described in the forthcoming section.

Finally, since we want to model one or several mills we propose to use inflow (log law profile) and outflow (free output) boundary conditions for the (x, y) lateral frontiers, as described in Section 5 below.

2.4 Wall-boundary condition

For the modeling effect of the ground, we borrow and adapt the *particle boundary condition* proposed by Minier and Pozorski [23] that aims to reproduce the momentum exchange between the ground and the bulk of the flow. This method is equivalent to wall functions approach in classical turbulence models.

Here, we just resume the main idea in [23] which consists in imposing a reflection to the particle trajectories, when it arrive to a given height z_{mirror} , where z_{mirror} is chosen in the logarithmic layer.

In order to define the reflection of the particles on this mirror face $\{z = z_{\text{mirror}}\}$, we denote with a ‘in’ the inward velocities in the region $\{z \in [z_{\text{mirror}}, H]\}$ and with a ‘out’ the outward velocities in the region $\{z \in [0, z_{\text{mirror}}]\}$.

The velocity U_{in} is oriented to the top whereas U_{out} is oriented to the bottom. A symmetry principle allows to replace any outward particle to its mirror inward particle.

The vertical component is simply reflected at z_{mirror} :

$$w_{\text{in}} = -w_{\text{out}} \quad (2.17)$$

whereas the horizontal velocity are lifted in a way that preserves the covariances $\langle u'w' \rangle$ and $\langle v'w' \rangle$ in this reflection process:

$$u_{\text{in}} = u_{\text{out}} - 2 \frac{\langle u'w' \rangle}{\langle w'^2 \rangle} w_{\text{out}}, \quad (2.18)$$

$$v_{\text{in}} = v_{\text{out}} - 2 \frac{\langle v'w' \rangle}{\langle w'^2 \rangle} w_{\text{out}}. \quad (2.19)$$

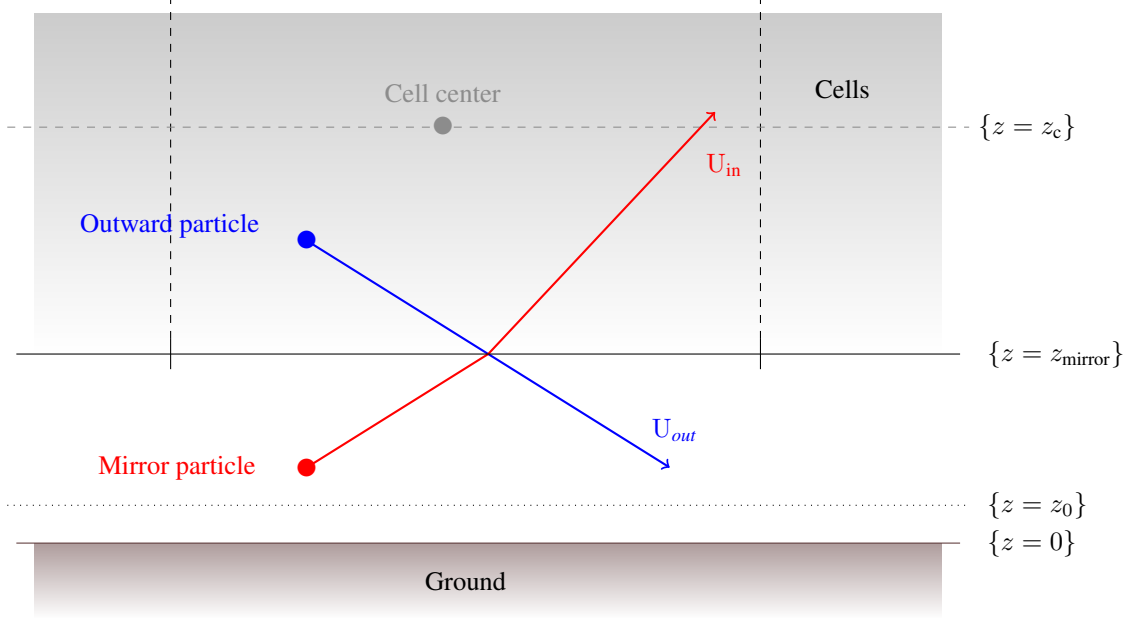


Figure 2: The mirror reflection scheme for the velocity near the ground.

It remains to impose the covariances at the ground.

In [7], Carloti describes the method used in the Meso-NH model [17] for the account of the log law. This method is inspired from the one of Schmid and Schumann [29]: the boundary condition for the subgrid covariances $\langle u'w' \rangle$ and $\langle v'w' \rangle$ are fixed to

$$\langle u'w' \rangle(t, x, y) = - \left(\frac{\langle u \rangle}{\sqrt{\langle u \rangle^2 + \langle v \rangle^2}} u_*^2 \right) (t, x, y) \quad (2.20)$$

$$\langle v'w' \rangle(t, x, y) = - \left(\frac{\langle v \rangle}{\sqrt{\langle u \rangle^2 + \langle v \rangle^2}} u_*^2 \right) (t, x, y) \quad (2.21)$$

where the friction velocity u_*^3 is computed in each cell at the bottom of the domain using the log law

$$u_*(t, x_c, y_c) = \kappa \frac{\sqrt{\langle u \rangle^2(t, x_c, y_c, z_c) + \langle v \rangle^2(t, x_c, y_c, z_c)}}{\log \left(\frac{z_c}{z_0} \right)} \quad (2.22)$$

where κ is the von Kármán constant, z_0 is the roughness length parameter, and (x_c, y_c, z_c) is the position of a cell's center, for the cells on the floor.

We adapt this idea in SDM with the following steps.

Step 1. Given $\langle u \rangle(t_n)$ and $\langle v \rangle(t_n)$, for any of the cells on the floor,

- we compute $u_*(t_n, x_c, y_c)$ with (2.22)
- we compute $\langle u'w' \rangle(t_n, x_c, y_c)$ and $\langle v'w' \rangle(t_n, x_c, y_c)$ using (2.20) and (2.21).

Step 2. For the particle boundary condition at z_{mirror} , we localize the particle crossing the interface in the cell of center (x_c, y_c, z_c) ; we use $\langle u'w' \rangle(t_n, x_c, y_c)$ and $\langle v'w' \rangle(t_n, x_c, y_c)$ to compute the reflected velocity of the mirror particle at the interface, using (2.17), (2.18) and (2.19).

In [23], the authors propose to fix z_{mirror} to $\frac{3}{5}z_c$. In our simulations in the following sections, we used $z_{\text{mirror}} = \frac{1}{2}z_c$.

³ $u_* = \left(\langle u'w' \rangle^2 + \langle v'w' \rangle^2 \right)^{1/4}$.

3 Actuator disc methods in the Lagrangian setting

The presence of wind mills is taken into account thanks to additional force terms in the stochastic differential equations that govern the movement of the particles. To this end, equation (2.1b) (which governs the time evolution of the velocity $U_t = (u_t, v_t, w_t)$ of a particle) is modified as follows:

$$\begin{aligned} dU_t = & \left(-\frac{1}{\rho} \nabla_x \langle \mathcal{P} \rangle (t, X_t) \right) dt \\ & - G(t, X_t) \left(U_t - \langle U \rangle (t, X_t) \right) dt + C(t, X_t) dW_t \\ & + f(t, X_t, U_t) dt + f_{nacelle}(t, X_t, U_t) dt + f_{mast}(t, X_t, U_t) dt. \end{aligned} \quad (3.1)$$

The term $f(t, X_t, U_t)$ represents the body forces that the blades exert on the flow. The supplementary terms $f_{nacelle}(t, X_t, U_t)$ and $f_{mast}(t, X_t, U_t)$ represent the impact of the mill nacelle and mast. In the present work, only the blade and nacelle forces are considered.

In this section, we discuss how those force terms should be implemented in the Lagrangian setting considered here, in order to recover consistency with classical Eulerian formulations.

Considering the full geometrical description of the blades (that requires a very fine mesh), the force f is a very complex function which encodes the geometry of the blades; however, in this study we are interested in the overall impact of the mills in the flow, and not in the fine geometrical details of the reciprocal interactions. For this reason, and to avoid costly computations, an *actuator disc* approach is used to provide approximations of f , with two different levels of complexity:

- (a) Non-rotating actuator disc with uniform loading.
- (b) Rotating actuator disc.

In the Actuator Disc approach, each mill is represented as an immersed surface which concentrates all forces exerted by the mill on the flow. A thorough description of this methodology can be found in Mikkelsen [20], and in the books by Hansen [14] and Manwell, McGowan and Rogers [18]. With different degrees of complexity, it has been applied to wind turbine simulations in Porté-Agel, Lub and Wu [26], Master et al. [19], El Kasmi and Masson [12]. It has also been used to simulate arrays of turbines in Wu and Porté-Agel [33].

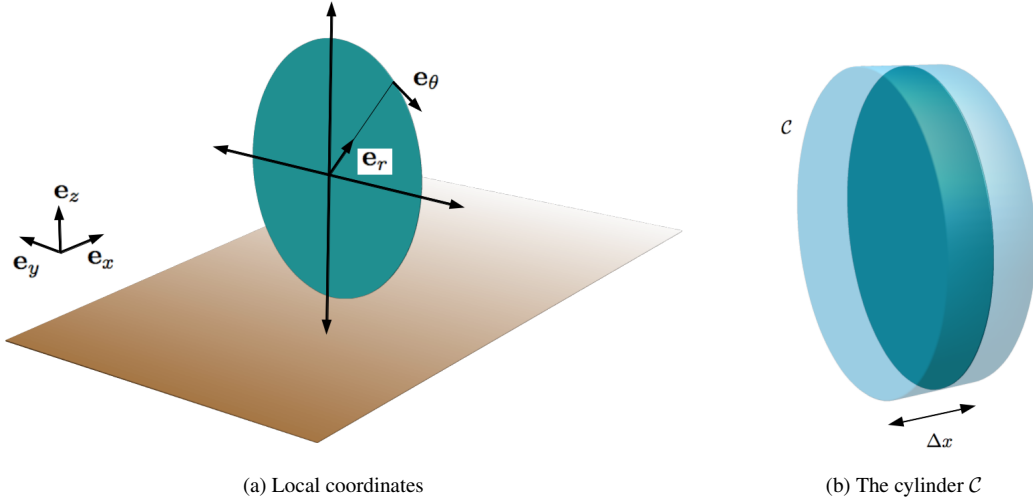


Figure 3: (a) The local reference frame at the actuator disc of the turbine, using cylindrical coordinates. (b) The cylinder \mathcal{C} that extends the actuator disc. Mill forces are applied to particles that lie inside.

It is assumed that the flow moves along the positive direction of the x axis, and that the turbine's main axis is aligned with the x axis, so that it faces the wind directly. It is convenient to define local reference frame of cylindrical coordinates centered at the hub of the turbine, with basis vectors e_x , e_r and e_θ as shown in Figure 3a. In order to apply the forces to the particles, the actuator disc is expanded to a cylinder \mathcal{C} of depth Δx , and the

forces per unit mass are used to correct the velocities of all particles lying inside \mathcal{C} . This cylinder is divided in two regions: $\mathcal{C} = \mathcal{C}_{blades} \cup \mathcal{C}_{nacelle}$, as depicted in Figure 4, where \mathcal{C}_{blades} represents the region occupied by the blades, and $\mathcal{C}_{nacelle}$ represents the region occupied by the nacelle. For the two models considered here (non-rotating and rotating actuator disc), the force term f is computed for and applied to particles lying inside region \mathcal{C}_{blades} ; and correspondingly, the term $f_{nacelle}$ is computed for and applied to particles lying inside region $\mathcal{C}_{nacelle}$. The following sections describe the way in which this is done.

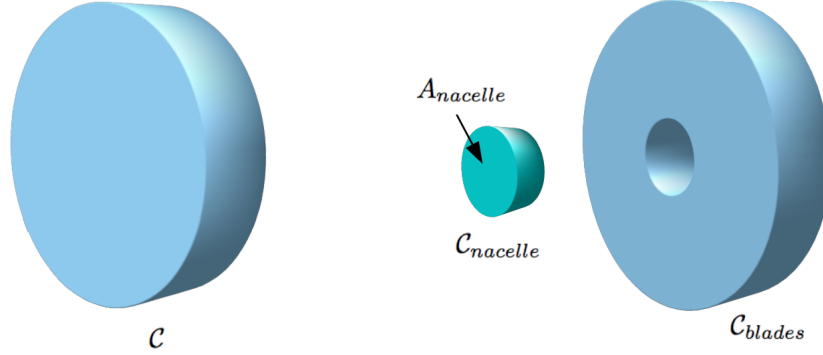


Figure 4: Left: cylinder \mathcal{C} representing the turbine. Right: sub-regions corresponding to the nacelle and blades, viewed by particles.

In the rest of this section we discuss successively on the force f in the non rotating actuator disc model, and in the rotating actuator disc model. We end by considering the $f_{nacelle}$.

3.1 Non rotating, uniformly loaded actuator disc model

In this model, the turbine force corresponding to the blades is distributed uniformly over the region \mathcal{C}_{blades} , and rotational effects are ignored. In the simplest formulation of the model, for a turbine facing a uniform laminar steady state flow, and ignoring the influence of the nacelle, the total thrust force exerted by the turbine is given by an expression of the form

$$F_x = -\frac{1}{2}\rho AC_T U_\infty^2 \mathbf{e}_x,$$

where \mathbf{U}_∞ is the unperturbed velocity far upstream from the turbine's location, U_∞ is its norm, A is the surface area of the turbine's disc, ρ is the density of air, and C_T is a dimensionless, flow dependent parameter called the *thrust coefficient*.

An elementary deduction of this expression can be found in [14] or [18]. This deduction, which is essentially one-dimensional, is based on conservation of linear momentum for a stream tube passing through the turbine's disc (see Figure 5). The analysis assumes that the turbine faces uniform, inviscid, steady-state flow, and hence there is radial symmetry with respect to the hub of the turbine. Further, a constant loading is assumed at the disc, and thus the velocity field is constant and uniform there. The thrust coefficient C_T is specified in terms of the *axial induction factor* a ,

$$a = \frac{U_\infty - U_D}{U_\infty}, \quad (3.2)$$

which measures the relative decrease in speed from the far upstream region and the disc region, where the local velocity has magnitude $U_D < U_\infty$ (see Figure 5).

As in Réthoré et al. [28], the local velocity magnitude U_D (whose exact formula is yet to be specified) is used instead of U_∞ by combining (3.2) with the thrust force expression that becomes

$$F_x = -2\rho \frac{a}{(1-a)} AU_D^2 \mathbf{e}_x, \quad (3.3)$$

and

$$C_T = 4a(1-a). \quad (3.4)$$

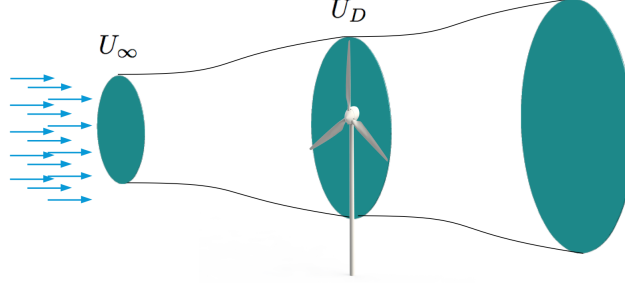


Figure 5: A stream tube passing through the actuator disc of the turbine. Uniform flow is assumed at the far upstream region.

In order to adapt this thrust force model to particles, the disc is extended to a cylinder \mathcal{C} of length Δx and mass $\rho A \Delta x$ (see Figure 3b), which is subdivided in the two regions \mathcal{C}_{blades} and $\mathcal{C}_{nacelle}$, as depicted in Figure 4. In both cases, the force is assumed to be uniformly distributed along the additional dimension. In the present section, we restrict ourselves to the adaptation of the model to the region \mathcal{C}_{blades} . The force per unit mass inside region \mathcal{C}_{blades} is then given by:

$$f_x = -\frac{1}{\Delta x} \frac{2a}{1-a} U_D^2 \mathbb{1}_{\{x \in \mathcal{C}_{blades}\}} \mathbf{e}_x. \quad (3.5)$$

As soon as we have specified how U_D is computed for each individual particle, from (3.5) follows Algorithm 2, for a given time step of length Δt beginning at time t_n , and a given particle with position \mathbf{X}_{t_n} and velocity \mathbf{U}_{t_n} at time t_n .

Algorithm 2 – Update the Lagrangian velocity with thrust force in the non rotating actuator disc model.

PRESTEP Compute the mean local speed at the disc $U_D^{(\text{Lagrangian})}$
if $\mathbf{X}_{t_n} \in \mathcal{C}_{blades}$ **then**
 $\mathbf{U}_{t_{n+1}} \mapsto \mathbf{U}_{t_n} - \frac{1}{\Delta x} \frac{2a}{1-a} (U_D^{(\text{Lagrangian})})^2 \mathbf{e}_x \Delta t.$
end if

Since (3.5) is derived from a laminar one-dimensional analysis, its generalization to turbulent shear flow requires $U_D^{(\text{Lagrangian})}$ to be carefully specified. For a particle with position \mathbf{X}_{t_n} in \mathcal{C}_{blades} and velocity \mathbf{U}_{t_n} at time t_n , at least three possibilities exist (all equivalent for uniform, laminar, steady-state flows):

- (a) define $U_D^{(\text{Lagrangian})} = |\mathbf{u}_{t_n}|$;
- (b) define $U_D^{(\text{Lagrangian})} = |\langle u \rangle|(t_n, \mathbf{X}_{t_n})$;
- (c) compute $U_D^{(\text{Lagrangian})}$ as the magnitude of average velocity of particles inside cylinder \mathcal{C}_{blades} :

$$U_D^{(\text{Lagrangian})} = |\mathbb{E}[\mathbf{u}_{t_n} | \mathbf{X}_{t_n} \in \mathcal{C}_{blades}]|. \quad (3.6)$$

If one selects options (a), Equation (3.5) describes the instantaneous force, and not the mean one. Given the flow-dependent nature of the axial induction factor a , and the fact that it pertains to the whole disc of the turbine, option (c) is adopted, preferably to option (b); the force density then becomes:

$$f_x = -\frac{1}{\Delta x} \frac{2a}{1-a} |\mathbb{E}[\mathbf{u}_t | \mathbf{X}_t \in \mathcal{C}_{blades}]|^2 \mathbb{1}_{\{\mathbf{X}_t \in \mathcal{C}_{blades}\}} \mathbf{e}_x. \quad (3.7)$$

3.2 Rotating actuator disc model

This model is based on a blade element analysis, which gives a description of the blade forces in terms of a set of simple geometrical parameters. The model assumes that each blade is comprised of tiny pieces (blade elements), each encompassing an infinitesimal length dr , which concentrate the relevant forces that the turbine exerts on the

flow. It is assumed that these blade elements are independent of one another, in the sense that they do not induce any radial movement on the flow.

To be precise, consider the reference frame depicted in Figure 3a, with basis vectors \mathbf{e}_x , \mathbf{e}_r , \mathbf{e}_θ along the axial (stream wise), radial and tangential directions, respectively. The corresponding flow velocity components in this frame will be denoted (U_x, U_r, U_θ) . We assume that the turbine rotates with angular speed ω , oriented along $-\mathbf{e}_\theta$. Consider a blade element located at radius r from the center of the turbine, and a portion of fluid near this blade element. By the model hypotheses, it is assumed that $U_r = 0$, and thus the flow velocity at this blade element is $\mathbf{U} = U_x \mathbf{e}_x + U_\theta \mathbf{e}_\theta$. Under these conditions, the local relative velocity of the flow with respect to the blade, $\mathbf{U}_{\text{relat}}$, is given by:

$$\mathbf{U}_{\text{relat}} = U_x \mathbf{e}_x + (U_\theta + \omega r) \mathbf{e}_\theta. \quad (3.8)$$

To introduce the blade forces, consider the blade depicted in Figure 6. In this model, the actual blade geometry is considered indirectly. The blades themselves are not meshed, but instead are represented by the following information:

- the lift and drag curves corresponding to a given airfoil model of each blade element;
- the *local chord length* $c(r)$ of the blade at radius r , which is the length of the blade element located there (see Figure 6);
- the *local pitch angle* $\gamma(r)$ of the blade at radius r ; $\gamma(r)$ is the angle between the chord line of the blade element located at radius r , and the rotational plane of the turbine (see Figure 7).

From this data and $\mathbf{U}_{\text{relat}}$, two important angles are defined for each blade element (see Figure 7):

- the *flow angle* ϕ , which is the angle between $\mathbf{U}_{\text{relat}}$ and the rotational plane of the turbine, and is given by

$$\phi = \arctan\left(\frac{U_x}{U_\theta + \omega r}\right), \quad (3.9)$$

- the *angle of attack* α , which is the angle between $\mathbf{U}_{\text{relat}}$ and the main chord line of the blade element, and is given by

$$\alpha = \phi - \gamma(r). \quad (3.10)$$

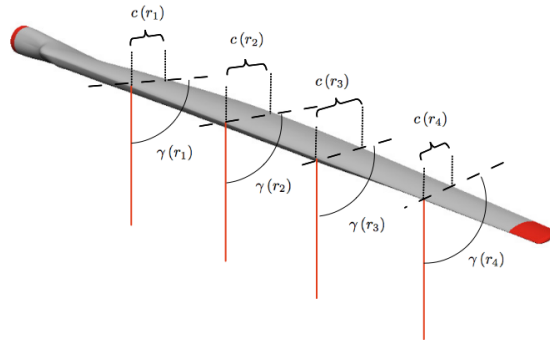


Figure 6: A blade, with chord length c and local pitch angle γ varying along its radius. Orange (solid) lines lie in the rotational plane of the turbine.

For the i -th blade, *blade element theory* tells us that the total force exerted on the flow by each blade element – spanning an infinitesimal portion dr of the blade – is proportional to the square of the norm of $\mathbf{U}_{\text{relat}}$ and to the surficial area of the element, which is approximated as $c(r)dr$. The force is divided in two orthogonal components:

- 1) A *lift force* $d\mathbf{L}^{(i)}$, which is parallel to $\mathbf{U}_{\text{relat}}$
- 2) A *drag force* $d\mathbf{D}^{(i)}$, which is orthogonal to $\mathbf{U}_{\text{relat}}$

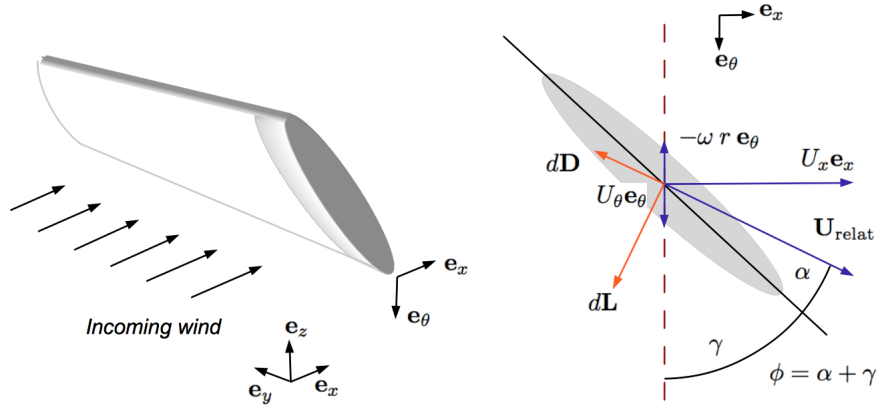


Figure 7: Visualisation in the $(\mathbf{e}_x, \mathbf{e}_\theta)$ plane of a blade element located at radius r from the center of the turbine: relative velocity $\mathbf{U}_{\text{relat}}$, rotational velocity $-\omega r \mathbf{e}_\theta$, local pitch angle $\gamma(r)$ and angle of attack α .

The expressions for the magnitudes of these forces, dL and dD , read as follows (U_{relat} being the magnitudes of $\mathbf{U}_{\text{relat}}$):

$$\begin{aligned} dL^{(i)} &= \frac{1}{2} \rho U_{\text{relat}}^2 c(r) C_L dr, \\ dD^{(i)} &= \frac{1}{2} \rho U_{\text{relat}}^2 c(r) C_D dr. \end{aligned} \quad (3.11)$$

The terms C_L and C_D are called the *lift coefficient* and *drag coefficient* respectively, and are functions of the angle of attack α , as well as the local Reynolds number at the blade. These functions are determined either empirically or via numerical simulations, and are often found in the form of tabulated data. In the present work, two approaches are used to determine C_L and C_D for a given value of the angle of attack α , depending on the mill data we have:

- numerical interpolation using tabulated data giving the values of both coefficients for a range of possible values of α , corresponding to a given airfoil design at a given Reynolds number. This approach is used in Section 4.
- direct computation using analytical expressions for the dependence on the angle of attack α , corresponding to a given airfoil design at a given Reynolds number. This approach is used in Section 5.

Expressions in (3.11) depend on i as U_{relat} , C_L and C_D are computed locally at each different blade position using one of the methods described above.

In the local reference frame of the turbine (see Figure 3a), the components of the differential force along \mathbf{e}_x and \mathbf{e}_θ corresponding to the i -th blade are, respectively:

$$\begin{aligned} dF_x^{(i)} &= -\left(dL^{(i)} \cos(\phi) + dD^{(i)} \sin(\phi)\right) = -\frac{1}{2} \rho U_{\text{relat}}^2 c(r) (C_L \cos(\phi) + C_D \sin(\phi)) dr, \\ dF_\theta^{(i)} &= dL^{(i)} \sin(\phi) - dD^{(i)} \cos(\phi) = \frac{1}{2} \rho U_{\text{relat}}^2 c(r) (C_L \sin(\phi) - C_D \cos(\phi)) dr. \end{aligned} \quad (3.12)$$

Now consider a turbine with N_{blades} blades. The aim is to use (3.12) to obtain expressions for the components of the force per unit mass along \mathbf{e}_x and \mathbf{e}_θ , corresponding to each blade. To do this, the blade in question is expanded a distance Δx along the axial direction, and smeared over an angular distance $\Delta \theta$, resulting in the three dimensional region shown in Figure 8. To a blade element located at radius r there corresponds an infinitesimal sector of volume $r \Delta x \Delta \theta dr$ and mass $\rho r \Delta x \Delta \theta dr$. Dividing the expressions in (3.12) by the element sector mass,

one obtains the forces per unit mass at radius r from the center of the wind turbine:

$$\begin{aligned} f_x^{(i)} &= \frac{1}{\rho r \Delta \theta \Delta x} \frac{dF_x^{(i)}}{dr} = -\frac{1}{2r \Delta \theta \Delta x} U_{\text{relat}}^2 c(r) (C_L \cos(\phi) + C_D \sin(\phi)), \\ f_\theta^{(i)} &= \frac{1}{\rho r \Delta \theta \Delta x} \frac{dF_\theta^{(i)}}{dr} = \frac{1}{2r \Delta \theta \Delta x} U_{\text{relat}}^2 c(r) (C_L \sin(\phi) - C_D \cos(\phi)). \end{aligned} \quad (3.13)$$

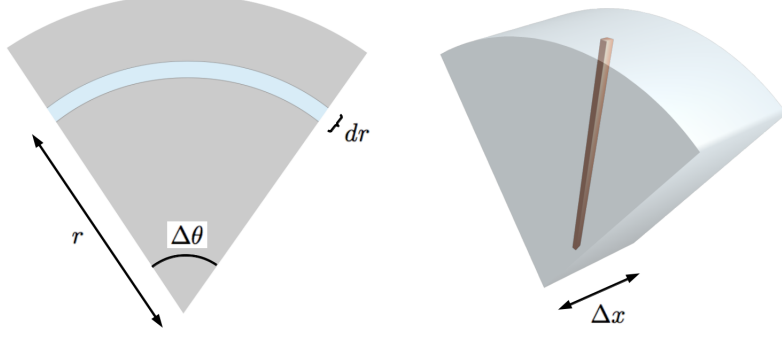


Figure 8: A three dimensional sector corresponding to one blade.

Note that expressions in (3.13) correspond to the force per unit mass of one single blade. In principle, each particle of the simulation will receive at most the force of one blade (the one corresponding to the sector where the particle is), and thus it is necessary to keep track of the positions of each blade (and the corresponding blade sector). However, if one is only interested in the global impact of the blades, it is possible to simplify the computations by selecting $\Delta \theta = \frac{2\pi}{N_{\text{blades}}}$, where N_{blades} is the number of blades of the turbine. In this case, the union of all blade sectors results in the same region $\mathcal{C}_{\text{blades}}$ used in section 3.1 (see Figure 9), and the blade positions become irrelevant. Expressions (3.13) then read as follows:

$$\begin{aligned} f_x &= \frac{1}{\rho 2\pi r \Delta x} \frac{dF_x}{dr} = -\frac{N_{\text{blades}}}{4\pi r \Delta x} U_{\text{relat}}^2 c(r) (C_L \cos(\phi) + C_D \sin(\phi)), \\ f_\theta &= \frac{1}{\rho 2\pi r \Delta x} \frac{dF_\theta}{dr} = \frac{N_{\text{blades}}}{4\pi r \Delta x} U_{\text{relat}}^2 c(r) (C_L \sin(\phi) - C_D \cos(\phi)). \end{aligned} \quad (3.14)$$

Note that this is equivalent to summing the contributions of (3.12) for all blades, and distributing the resulting force in an annulus of mass $2\pi \rho r \Delta x dr$ (or equivalently, to choosing $\Delta \theta = 2\pi$ and summing the contributions of (3.13) for the N_{blades} blades). In this case, since the blades are essentially delocalised within the mill region, their contributions may be considered equal to one another, and the total force at radius r will be given by:

$$\begin{aligned} dF_x &= \sum_{i=1}^{N_{\text{blades}}} dF_x^{(i)} = -N_{\text{blades}} (dL \cos(\phi) + dD \sin(\phi)), \\ dF_\theta &= \sum_{i=1}^{N_{\text{blades}}} dF_\theta^{(i)} = N_{\text{blades}} (dL \sin(\phi) - dD \cos(\phi)). \end{aligned} \quad (3.15)$$

Under these assumptions, since the blade characteristics (local pitch, local chord length, lift and drag coefficients) are defined locally, and since the blade positions within $\mathcal{C}_{\text{blades}}$ are indeterminate, we may use the particle positions and Lagrangian velocities (X_t, U_t) to compute the angle of attack α , the local pitch angle γ and deduce all the needed information $\mathbf{U}_{\text{relat}}$, $c(r)$, $C_L(\alpha)$ and $C_D(\alpha)$. From (3.8), we derive the relative velocity $\mathbf{U}_{\text{relat}}$ from the instantaneous particle position and Lagrangian velocity (X_t, U_t) by

$$\mathbf{U}_{\text{relat}}(X_t, U_t) = (U_t \cdot \mathbf{e}_x) \mathbf{e}_x + ((U_t \cdot \mathbf{e}_\theta) + \omega r(X_t)) \mathbf{e}_\theta. \quad (3.16)$$

We also compute the flow angle ϕ using (3.9):

$$\begin{aligned} \phi(X_t, U_t) &= \arctan \left(\frac{(U_t \cdot \mathbf{e}_x)}{((U_t \cdot \mathbf{e}_\theta) + \omega r(X_t))} \right), \\ \alpha(X_t, U_t) &= \phi(X_t, U_t) - \gamma(r(X_t)). \end{aligned} \quad (3.17)$$

Then the force added in the Lagrangian velocity Equation (3.1) is

$$\begin{aligned} f_x(t, \mathbf{X}_t, \mathbf{U}_t) &= -\mathbb{1}_{\{\mathbf{X}_t \in \mathcal{C}_{blades}\}} \frac{N_{blades}}{4\pi r \Delta x} (U_{\text{relat}}(\mathbf{X}_t, \mathbf{U}_t))^2 c(r(\mathbf{X}_t)) (C_L(\alpha) \cos(\phi) + C_D(\alpha) \sin(\phi)) (\mathbf{X}_t, \mathbf{U}_t), \\ f_\theta(t, \mathbf{X}_t, \mathbf{U}_t) &= \mathbb{1}_{\{\mathbf{X}_t \in \mathcal{C}_{blades}\}} \frac{N_{blades}}{4\pi r \Delta x} (U_{\text{relat}}(\mathbf{X}_t, \mathbf{U}_t))^2 c(r(\mathbf{X}_t)) (C_L(\alpha) \sin(\phi) - C_D(\alpha) \cos(\phi)) (\mathbf{X}_t, \mathbf{U}_t). \end{aligned} \quad (3.18)$$

This results in the numerical Algorithm 3.

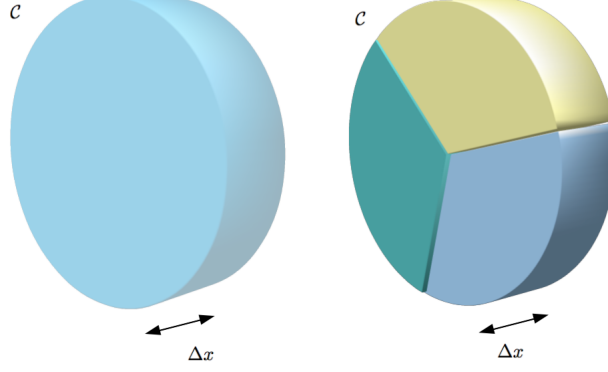


Figure 9: Left: cylinder \mathcal{C} representing the turbine viewed by a particle. Right: decomposition of \mathcal{C} in three blade sectors. In these figures the nacelle sector $\mathcal{C}_{nacelle}$ is omitted for simplicity.

3.3 Nacelle model

In all the simulation results presented in Sections 4 and 5, we use a simple model for the turbine nacelle. As in Wu and Porté-Agel [32], the nacelle force $f_{nacelle}$ is modeled as a permeable actuator disc, but here we adapt the model to the Lagrangian setting. The nacelle is assumed to occupy a cylinder $\mathcal{C}_{nacelle}$, with frontal area $A_{nacelle}$ and depth Δx (see Figure 4).

A particle (X_t, U_t) lying within the nacelle region is applied a force per unit mass of:

$$f_{nacelle} = -\frac{1}{\Delta x} \frac{2a_{nacelle}}{1 - a_{nacelle}} \mathbb{1}_{\{\mathbf{X}_t \in \mathcal{C}_{nacelle}\}} (U_t \cdot \mathbf{e}_x)^2 \mathbf{e}_x. \quad (3.19)$$

At the same time, the actuator disc models presented in Section 3.2 are modified to account for the nacelle's presence: the relevant region for the mill forces will not be \mathcal{C} , but instead the subregion \mathcal{C}_{blades} defined as (see Figure 4):

$$\mathcal{C}_{blades} = \mathcal{C} \setminus \mathcal{C}_{nacelle}. \quad (3.20)$$

In this manner, only particles belonging to \mathcal{C}_{blades} (and not \mathcal{C}) are applied the mill forces. Also, for the Non-Rotating Actuator Disc, the local velocity is estimated considering only particles lying inside \mathcal{C}_{blades} .

4 Comparison with high-resolution windtunnel measurements

In this section, the method presented above is tested against wind tunnel measurements performed at the Saint Anthony Falls Wind Tunnel, University of Minnesota, by Chamorro and Porté-Agel [8]. The data consists of high resolution, hot-wire anemometry wind speed measurements at different downstream positions and heights. We particularly focus on three key turbulence statistics that are commonly used to characterize wind-turbine wakes: the mean and turbulence intensity profiles of the streamwise velocity, and the kinematic shear stress profile (see e.g. Wu and Porté-Agel [32]).

4.1 Experimental setup

The Saint Anthony Falls Laboratory wind tunnel consists of two main sections. The air recirculates among these main sections. Turbulence is created using a picket fence, and an adjustable ceiling height allows a zero-pressure

Algorithm 3 – Update the Lagrangian velocity with thrust force in the rotating actuator disc model.

PRESTEP Compute the relevant geometrical information of the particle at time t_n , relative to the turbine:

- the radial position $r(X_{t_n})$ of the particle (component of X_{t_n} along \mathbf{e}_r)
- the distance to the rotational plane of the turbine.

With this information, determine if X_{t_n} lies inside \mathcal{C}_{blades} or not.

if $X_{t_n} \in \mathcal{C}_{blades}$ **then**

- (1) compute the tangent vector \mathbf{e}_θ corresponding to the projection of X_{t_n} on the rotational plane of the turbine;
- (2) compute the tangential velocity of the particle, $U_{t_n}^{(\text{tan})}$; that is, its component along \mathbf{e}_θ ;
- (3) compute the relative velocity $\mathbf{U}_{\text{relat}}$ using (3.16) and the particle velocity components at time t_n :

$$\mathbf{U}_{\text{relat}} = u_{t_n} \mathbf{e}_x + \left(U_{t_n}^{(\text{tan})} + \omega r(X_{t_n}) \right) \mathbf{e}_\theta;$$

- (4) compute the flow angle ϕ using (3.17) and the particle velocity components at time t_n :

$$\phi = \arctan \left(\frac{u_{t_n}}{U_{t_n}^{(\text{tan})} + \omega r(X_{t_n})} \right);$$

- (5) compute the angle of attack α using (3.17), with the local pitch computed at the radial position of the particle:

$$\alpha = \phi - \gamma(r(X_{t_n}));$$

- (6) obtain the lift and drag coefficients $C_L(\alpha)$ and $C_D(\alpha)$ using the airfoil data;
- (7) apply the axial and tangential forces per unit mass (3.18) respectively to the particle velocity:

$$u_{t_{n+1}} \mapsto u_{t_{n+1}} - \frac{N_{blades}}{4\pi r \Delta x} \mathbf{U}_{\text{relat}}^2 c (C_L \cos(\phi) + C_D \sin(\phi)) \Delta t,$$

$$U_{t_{n+1}}^{(\text{tan})} \mapsto U_{t_{n+1}}^{(\text{tan})} + \frac{N_{blades}}{4\pi r \Delta x} \mathbf{U}_{\text{relat}}^2 c (C_L \sin(\phi) - C_D \cos(\phi)) \Delta t.$$

end if

gradient boundary layer flow to be created in the main sections. A miniature wind turbine is located in the tunnel, and sensors are placed at different upstream and downstream positions relative to the wind turbine (see [8] for details).

For the comparison between Lagrangian simulations and measurements, we used the neutrally-stratified boundary layer experiment. The main characteristics of the neutral boundary layer flow produced in the wind tunnel are summarized in Table 1a.

To test the implementation of mills in the stochastic Lagrangian settings presented before, a one-mill configuration reproducing the Saint Anthony Falls experiment has been used. A single mill has been placed in a rectangular domain spanning $4.32 \times 0.72 \times 0.46$ meters in the x , y and z directions, respectively (Figure 10). The mill faces atmospheric flow with a log-law profile at the inlet section, that develops moving along the x direction. The main physical and computational parameters of the simulations are detailed in Table 1c. The miniature three-blade wind turbine is chosen so as to represent the typical dimensions and tip speed ratios of commercial wind turbines. The main parameters of the wind turbine used in the simulations are listed in Table 1d.

To assess the impact of the mill in the flow, Lagrangian simulations are run with the *rotating actuator disc* turbine model. The mill's position is such that the x and y coordinates of the hub lie at the center of one of the computational cells.

To initialize the simulations, a warm-up simulation is run first, without mill. For this warmup simulation, an inflow-outflow condition is used in the x axis (the main direction of the wind): particles exiting the domain at

Boundary layer characteristics in the wind tunnel	
Boundary layer depth	0.46 m
Wind speed at the top	2.8 m s^{-1}
Velocity friction u_*	0.11 m s^{-1}
Roughness length z_0	0.04 mm

(a) Main characteristics of the boundary layer flow

Model constants	
Rotta constant C_R	1.8
von Karman constant κ	0.4
C_2	0.60
C_ϵ	0.068
z_{ℓ_m}	0.1 m

(b) Main model physical constants

Simulation parameters	
Domain size x	2.16 m
Domain size y	0.726 m
Domain size z	0.42 m
96 cells in x	$\Delta x = 0.0225 \text{ m}$
33 cells in y	$\Delta y = 0.022 \text{ m}$
84 cells in z	$\Delta z = 0.005 \text{ m}$
Particles per cell	150
Final time is 30 s	Time step is 0.03 s

(c) configuration of the simulations

Mill configuration	
Coordinates of the hub:	(0.5 0.36 0.125) m
Hub height	0.125 m
Radius	0.075 m
Nacelle radius	0.01 m
Rotational speed	112.0 rad.s^{-1}
Inflow factor of the nacelle	$a_{nacelle} = 0.4$

(d) parameters of the mill

Table 1: Main parameters of the wind tunnel simulations.

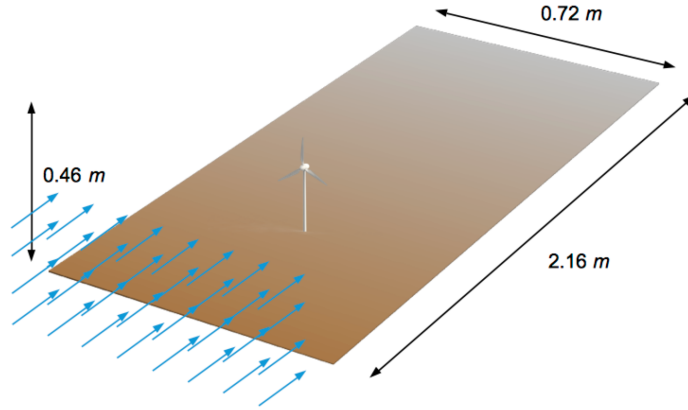


Figure 10: Domain for the wind tunnel scale simulations.

the outflow boundary are reinserted at the inflow boundary with a mean velocity given by the targeted log-law⁴ plus a random velocity vector normally distributed, that renders the covariance structure taken from the cell where the particle was in the previous time step. A similar boundary condition is used in the y axis. The results of the warmup simulation are averaged along the x and y axes to produce empirical profiles of all relevant statistics of the velocity field.

For the mill simulations, an inflow-outflow boundary condition is applied in the x axis, using the empirical profile from the warmup simulation to force the inflow condition: particles exiting the domain at the outflow boundary are reinserted at the inflow one with velocities following a trivariate Gaussian distribution computed with the information of these empirical profiles. A similar strategy is used in the y axis boundaries: particles exiting the domain through one of these boundaries are reinserted in the opposite boundary, with a new velocity following a trivariate Gaussian distribution computed with the empirical profiles.

In all simulations, the boundary conditions for the z axis are as described in Section 2.

As in [32], we use the lift and drag data $C_L(\alpha)$ and $C_D(\alpha)$ provided by Blade data taken from Sunada Sakaguchi and Kawachi [31]. The chord length and twist angle of the turbine are taken from [32].

⁴ $u(z) = \frac{u_*}{\kappa} \log \frac{z}{z_0}$.

4.2 Comparison with experimental data

The results of SDM with the more complex Rotating Actuator Disc mill model is compared against experimental data obtained from Wu and Porté-Agel [32]. Three quantities are of particular interest: the streamwise component of the mean velocity field, the streamwise turbulent intensity, and the shear stress between streamwise and vertical components. As underlined in [32], due to the non-uniform (logarithmic) mean velocity profile of the incoming boundary-layer flow, the profiles of those three quantities yield non-axisymmetric distribution.

SDM simulations are showed without any time average on the SDM output produced after a total of 1000 time iterations after the warm-up phase. We show $\langle u \rangle$, I and $-\langle uw \rangle$ as they are computed at the final time step, using the second order CIC-estimator for the computation of Eulerian fields on the last 20 time steps only, to not burden the computation time.

First, we examine the streamwise component of the mean velocity. A profile comparison against experimental data at several downstream locations is shown in Figure 11. For the Rotating ADM a good agreement is seen for distances equal and higher than 5 turbine diameters, while a reasonable agreement is seen near the turbine;

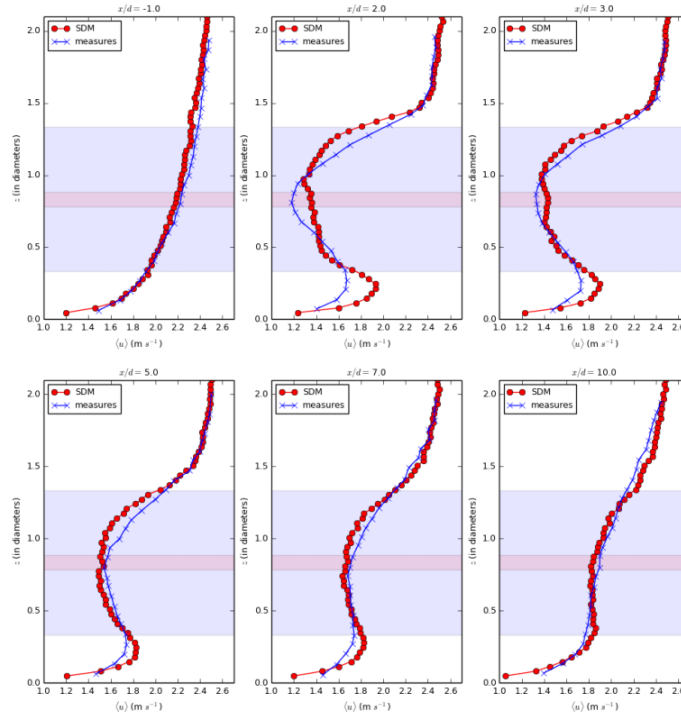


Figure 11: Comparison of vertical profiles of $\langle u \rangle$ at different downstream positions x from the turbine (-1, 2, 5, 7 and 10 diameters respectively). The profiles are centred to the hub y position. The blue curve represents the wind tunnel measures, the red curve represents SDM simulation with the Rotating Actuator Disc mill model.

Secondly, the turbulence intensity I of the stream-wise component of velocity is analyzed. Figure 12 shows the vertical turbulence intensity profiles, which are plotted at the same downstream positions as was done for $\langle u \rangle$. We compute the turbulence intensity with SDM, using the same inflow mean velocity U_{hub} at the hub height than in [32]:

$$I = \frac{\sqrt{\frac{2}{3}k}}{U_{\text{hub}}}, \quad \text{with } U_{\text{hub}} = 2.2 \text{ m s}^{-1}.$$

We observe a good fit with the measures far and close to the mill, even if the turbulent intensity seems to be overestimated in the area of the nacelle (in light red) at 2 and 3 diameters of the hub.

Also of interest is the shear stress (i.e. $-\langle uw \rangle$ the covariance between x and z components of velocity). As before, vertical profiles are plotted for different downstream positions from the turbine. Figure 13 shows the results. Again, the fit is good but SDM seems to overestimate a little the shear stress. It is worth noting that the SDM computation locates the maximum of the shear stress at the top tip of the blades area (top limit of the light blue area) as expected. The same effect can be observed for the turbulent intensity.

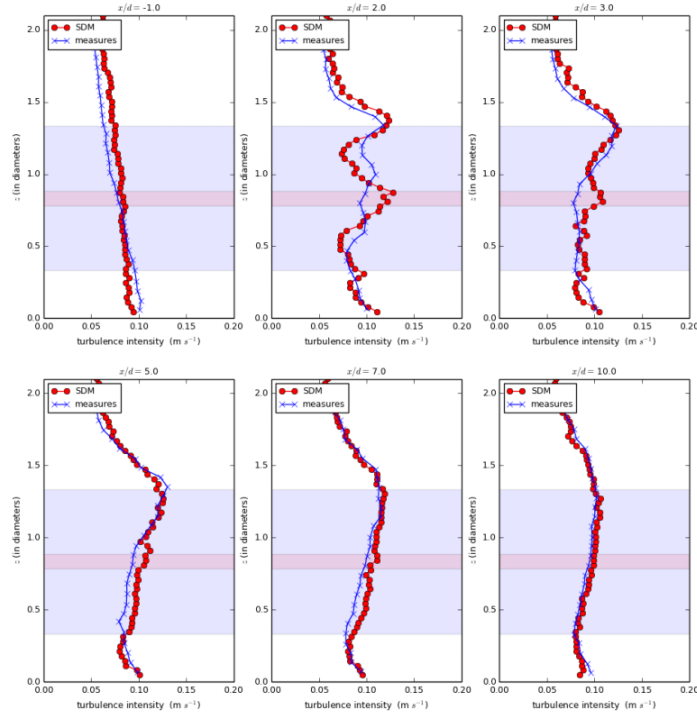


Figure 12: Comparison of vertical profiles of the turbulence intensity at different downstream positions x from the turbine (-1, 2, 5, 7 and 10 diameters respectively). The profiles are centred to the hub y position. The blue curve represents the wind tunnel measures, the red curve represents SDM simulation with the Rotating Actuator Disc mill model.

We complement the comparison between the 2D xz -profiles in Figures 11 12 13, with some other directional views in Figure 14 showing in particular the winding of the streamlines passing through the turbine.

It is worth to notice that in this first Lagrangian approach for Rotating-ADM, we did not dissociate the Δx corresponding to the thickness of the C_{blades} cylinder with the Δx of the cell mesh. Thus, in these simulations the C_{blades} thickness is about 66% of the disk diameter. Refine this thickness independently to the cell mesh size can bring substantial improvements without additional computational cost.

Furthermore, the model of permeable disk for the nacelle can be improved (without counting the mast model that we have not put yet in our simulation). In these simulations, we introduce the corresponding force term in the velocity computation without any correction terms for the second order moments, as we did for the wall law model at the ground. There is therefore some margin of improvement for the Rotating-ADM model with SDM.

Computation time. To produce all the results shown in this paper, we have used one 32-cores Intel Xeon CPU E5-2665 0 @ 2.40GHz computer node. The elapsed time for the 1000 iterations with $96 \times 33 \times 84 \times 150$ Lagrangian particles (about 40 millions of particles) is about 8 hours and 10 minutes. A new version of our code for multi-nodes computer architecture is under development.

5 Some numerical experiments at the atmospheric scale

We reproduce atmospheric turbulent condition approaching a real-size neutrally-stratified boundary layer condition, by parametrizing our simulation inspired by the numerical experiments performed in Drobinski et al. in [10] for an atmospheric neutral case. The corresponding boundary layer characteristics are summarized in Table 2b Figure 15 shows how SDM reproduces turbulence characteristics of the same order than in [10] as well as log-law profile for the velocity. In particular the anisotropic variance profiles, computed here in the whole boundary layer depth converge to zero at the top of the boundary layer. The turbulent kinetic energy goes naturally to zero at the boundary layer top and SDM fits the prescribed laminar geostrophic flow.

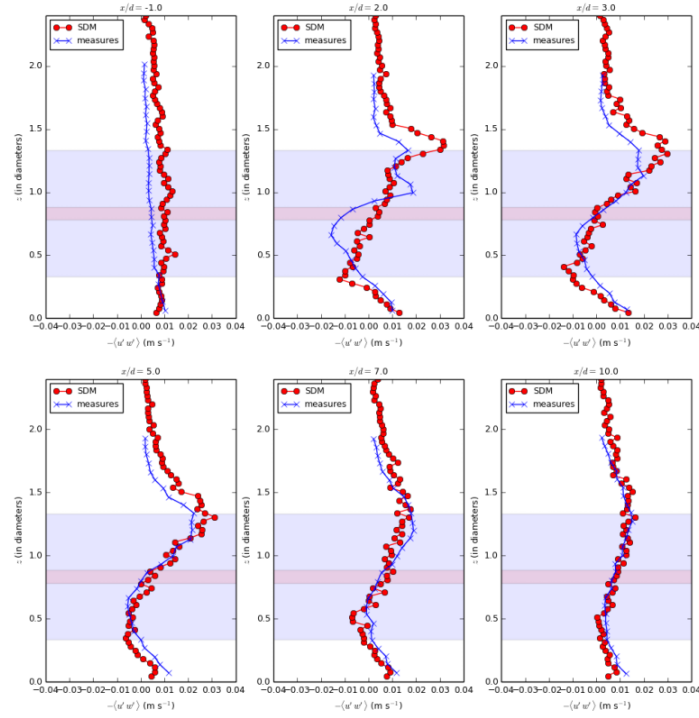


Figure 13: Comparison of vertical profiles of the shear stress $-\langle u'w' \rangle$ at different downstream positions x from the turbine (-1, 2, 5, 7 and 10 diameters respectively). The profiles are centred to the hub y position. The blue curve represents the wind tunnel measures, the red curve represents SDM simulation with the Rotating Actuator Disc mill model.

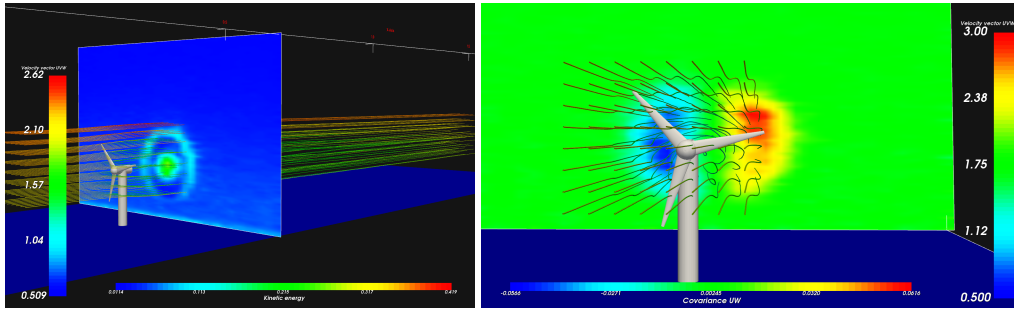


Figure 14: Streamlines visualization (Rotating ADM simulation), with a yz -contour plot of the turbulent kinetic energy circles at one diameters of the hub (left); with a yz -contour plot of the $\langle u'w' \rangle$ covariance at 3.5 diameters of the hub (right).

5.1 Simulation setup

To test the implementation of mills in the stochastic Lagrangian settings presented before, a one-mill configuration has been used. A single mill has been placed in a rectangular domain spanning $1500 \times 400 \times 300$ meters in the x , y and z directions, respectively (Figure 16). The mill faces atmospheric flow with a log-law profile at the inlet section, that develops moving along the x direction. The main physical and computational parameters of the simulations are detailed in Table 2.

To assess the impact of the mill in the flow, simulations are run with the two turbine models presented in Section 3, namely: the *non-rotating actuator disc* mode (NR-ADM), and the *rotating actuator disc* model (R-ADM). The mill's position is such that the x and y coordinates of the hub lie at the center of one of the computational cells.

To initialize the simulations, a warm-up simulation is run first, according to the same process described to initialize the wind tunnel simulation in Section 4.

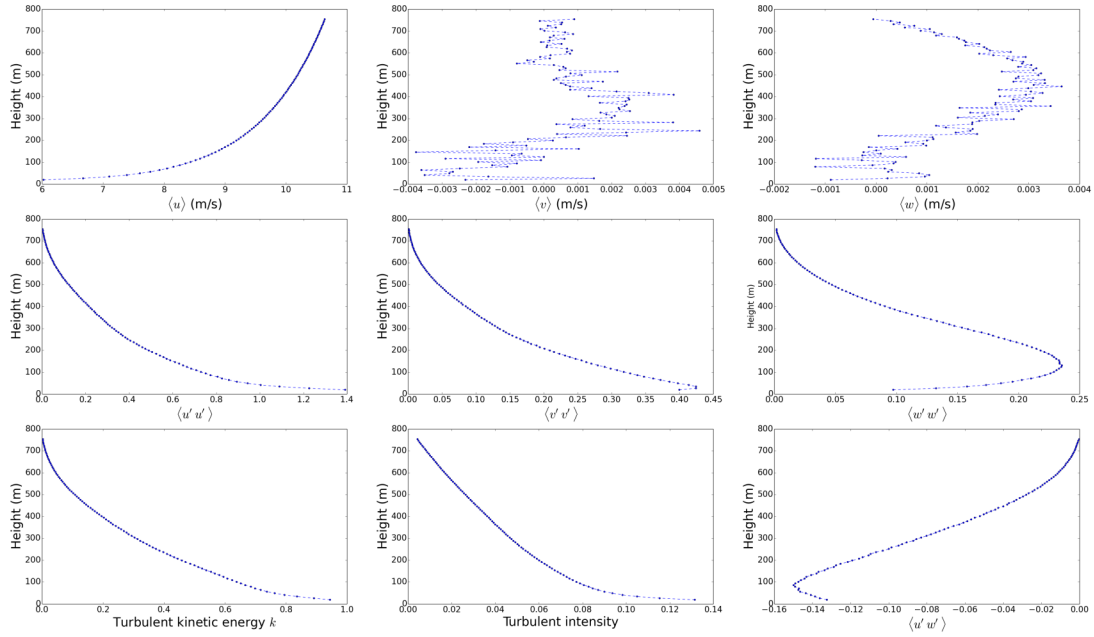


Figure 15: Profiles of main turbulence characteristics computed by SDM in the whole boundary layer (averaged in the x and y -directions). The numerical parameters are the same than in Tables 2 except that the computational domain height is 750 m.

Boundary layer characteristics	
Boundary layer depth	750 m
Wind speed at the top	10.63 m s^{-1}
Velocity friction u_*	0.42 m s^{-1}
Roughness length z_0	0.03 m

(a) Main characteristics of the boundary layer flow

Model constants	
Rotta constant C_R	1.8
von Karman constant κ	0.4
C_2	0.60
C_ϵ	0.08
$z\ell_m$	150 m

(b) Main model physical constants

Simulation parameters	
Domain size x	1488 m
Domain size y	403 m
Domain size z	300 m
90 cells in x	$\Delta x = 16 \text{ m}$
31 cells in y	$\Delta y = 13 \text{ m}$
80 cells in z	$\Delta z = 3.75 \text{ m}$
Particles per cell	128
Final time is 1000 s	Time step is 1.0 s

(c) configuration of the simulations

Mill configuration	
Coordinates of the hub:	(496.875,200,50) m
Hub height	50 m
Radius	20.5 m
Nacelle radius	4.5 m
Rotational speed	2.83 rad.s^{-1}
$a_{nacelle}$ for the Rotation ADM	0.38
$a_{nacelle}$ for the Non Rotation ADM	0.45

(d) parameters of the mill

Table 2: Main parameters of the simulations at the atmospheric scale.

For the mill simulations, an inflow-outflow boundary condition is applied in the x axis, as described again in Section 4.

For the rotating case, a realistic wind turbine has been designed using blade data of a NTK 500/41 wind turbine (as found in [14]), together with lift and drag coefficients corresponding to a NACA 23012 airfoil at Reynolds numbers of the order of 10^6 (as found in Abbott and von Doenhoff [1]).

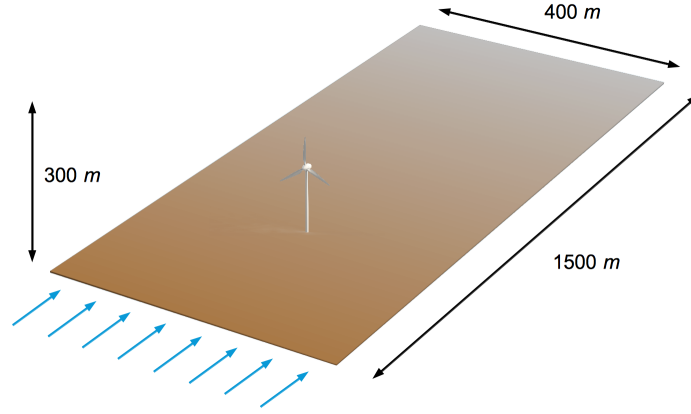


Figure 16: Domain for the atmospheric scale simulations.

5.2 Computation of the non-rotating equivalent

For the non-rotating case, we need to specify the values of a , C_T and U_∞ (as used in Equations (3.2), (3.4), and (3.3)) so that the simulation is equivalent to the rotating actuator disc. Again, we define this equivalence by requiring the total thrust force in both cases to be the same. However, in this section we introduce an additional method to compute the required quantities, which also serves as a consistency validation of our simulations in the atmospheric case: the Blade Element Momentum method (BEM).

Compute thrust from the SDM particles

For the non-rotating (NR) actuator disc model, we compute the total thrust excluding the area $A_{nacelle}$ occupied by the nacelle:

$$F_x^{\text{NR}} = -\frac{1}{2}\rho(A - A_{nacelle})C_T U_\infty^2, \quad (5.1)$$

whereas for the rotating (R) model, the total thrust can be computed by integrating Equation (3.15) from the nacelle radius $r_{nacelle}$ to the turbine radius R :

$$F_x^{\text{R}} = -N_{blades} \int_{r_{nacelle}}^R \left(\frac{dL}{dr} \cos(\phi) + \frac{dD}{dr} \sin(\phi) \right) dr. \quad (5.2)$$

The idea is then to compute U_∞ and F_x^{R} , and substitute them in (5.1) to obtain C_T . The magnitude U_∞ can be easily estimated as the z -averaged value of the mean velocity $\langle U \rangle$ at the inlet section of the domain, over the diameter of the turbine:

$$U_\infty = \frac{1}{2R} \int_{h-R}^{h+R} \frac{u_*}{\kappa} \log\left(\frac{z}{z_0}\right) dz, \quad (5.3)$$

To compute F_x^{R} in (5.2) from the particle information, the integrand is estimated for all particles within region \mathcal{C} , using equations (3.18):

$$\frac{1}{\rho} \frac{dF_x^{\text{R}}}{dr} = \frac{1}{\rho} \left(\frac{dL}{dr} \cos(\phi) + \frac{dD}{dr} \sin(\phi) \right) \simeq -2\pi r(X_t) \Delta x f_x(X_t, U_t). \quad (5.4)$$

The total thrust over ρ , F_x^{R}/ρ , is then computed by an estimation of the integral:

$$\frac{F_x^R}{\rho} = R \frac{\sum_{p=1}^{N_p} 2\pi r (X_t^p) \Delta x f_x (X_t^p, U_t^p) \mathbb{1}_C (X_t^p)}{\sum_{p=1}^{N_p} \mathbb{1}_C (X_t^p)}. \quad (5.5)$$

Compute thrust with BEM

A complete description of BEM theory can be found in [14] or [18]. It stems from the combination of two different analyses of the turbine performance facing a steady-state, uniform, radially symmetric flow:

- (1) a linear and angular momentum balance in thin, radially distributed, annular stream tubes passing through the turbine swept area at different radii;
- (2) a blade element analysis of the turbine.

The first of these analyses assumes that the relative velocity decrease from the far upstream region to the disc region depends on the radial position, so that a now varies with r :

$$a(r) = \frac{U_\infty - U_D(r)}{U_\infty}. \quad (5.6)$$

It is also assumed that the flow gains angular momentum, related to the rotational speed of the turbine. The angular speed U_θ at radius r at the disc is controlled by an additional function $a'(r)$:

$$U_\theta(r) = a'(r)\omega r, \quad (5.7)$$

where ω is the angular speed of the turbine. The following expressions are then found for the differential forces in directions \mathbf{e}_x and \mathbf{e}_θ , at an annulus located at radius r from the turbine's center (see [18] or [14] for details):

$$dF_x(r) = -4\pi\rho r a(r)(1 - a(r))U_\infty^2 dr, \quad (5.8)$$

$$dF_\theta(r) = 4\pi\rho\omega a'(r)(1 - a(r))U_\infty r^2 dr. \quad (5.9)$$

Given the assumption of radially symmetric flow made by BEM, in this analysis $\mathbf{U}_{\text{relat}}$ and the angle ϕ are functions of r only. In terms of $a(r)$ and $a'(r)$, expressions (3.8) and (3.9) are simplified to:

$$\mathbf{U}_{\text{relat}}(r) = (1 - a(r))U_\infty \mathbf{e}_x + (1 + a'(r))\omega r \mathbf{e}_\theta, \quad (5.10)$$

$$\phi(r) = \arctan\left(\frac{(1 - a(r))U_\infty}{(1 + a'(r))\omega r}\right). \quad (5.11)$$

On the other hand, a pure blade element analysis like the one presented in Section 3.2 yields the following expressions for the same quantities:

$$dF_x(r) = -\frac{1}{2}N_{\text{blades}}c\rho U_{\text{relat}}^2(r)(C_L \cos(\phi(r)) + C_D \sin(\phi(r)))dr, \quad (5.12)$$

$$dF_\theta(r) = \frac{1}{2}N_{\text{blades}}c\rho U_{\text{relat}}^2(r)(C_L \sin(\phi(r)) - C_D \cos(\phi(r)))dr. \quad (5.13)$$

In BEM, the rotor is discretized in a finite number of blade elements. For a set of radial positions and given values of U_∞ and ω , the values of a and a' , the flow angle ϕ and the relative velocity magnitude U_{relat} are computed for each blade element separately, by equating (5.8) with (5.12) and (5.9) with (5.13) and using an iterative procedure (see [14] for a detailed description of the algorithm). The procedure delivers the values of $U_{\text{relat}}(r)$, $\phi(r)$, $a(r)$ and $a'(r)$.

Two Non-Rotating equivalent models are obtained: one with the computation of the thrust according to (5.5), and the other using the BEM method described above. The corresponding estimated values for the thrust coefficient are reported in Table 3. The a values produced par the two methods are so close that the plotting of the corresponding simulation profiles (as those in Figures 17 and 19) are completely indistinguishable. This first comparison validates the thrust equivalence computation with the SDM particles, but as we will see in the next section, at least with this value of a , the NR-ADM underestimates the three main characteristic that we analyze in the flow, $\langle u \rangle$, $\langle u'u' \rangle$ and $\langle u'w' \rangle$.

In addition to the assumptions of homogeneity and symmetry of the wind fields that are not well respected in our case, the thrust computation methods described above may be sensitive to the blade geometry discretization parameter (in our data $dr = 1\text{m}$) for the BEM-based method, to the Δx parameter for the density estimator, in (5.5) for the SDM particles-based method.

Equivalent non rotating actuator disc parameter estimations			
Method	F_x^R / ρ ($N_{blades}m^3/kg$)	a	C_T
SDM Particle computation	28680.55	0.2081584	0.659314
BEM computation	27863.06	0.2034322	0.648190

Table 3: Estimation of the equivalent non-rotating actuator disc for our mill configuration.

5.3 Numerical experiments, comparison between rotating and non-rotating actuator disc methods

It is interesting and useful to analyze the differences between results obtained with the simple Non-Rotating model and the more complex Rotating model, and to determine to which extent they give a similar development of the turbine wake. In particular, as can be seen in the simulations of Wu and Porté-Agel [32], one would expect an under-prediction of the speed deficit near the turbine for the non-rotating case, while both models should yield similar results far downstream from the turbine. This and other effects are studied hereafter.

To begin with, mean velocity contour plots along the stream-wise direction are shown for both models in Figure 17. These plots show that rotation and non-uniform loading have a clear impact in the turbine wake. This

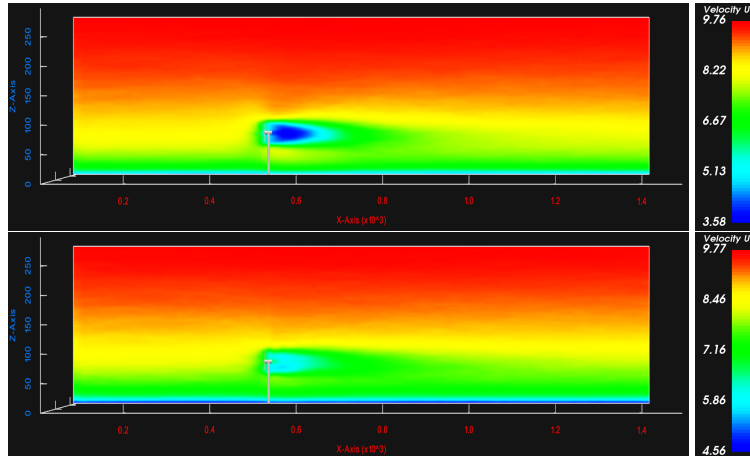


Figure 17: Comparison of xz cross sections of $\langle u \rangle$: Rotating Actuator Disc (top), Non-Rotating Actuator Disc with a estimated from thrust equivalence (bottom).

is confirmed by the mean velocity profiles at different downstream positions, as shown in Figure 18. As expected the Rotating AD model and the Non-Rotating AD model present substantial differences, as already observed in the LES framework in [32]. The mean velocity component $\langle u \rangle$ is underestimated in the disk area (blades area corresponds to the light blue zone, and the nacelle area corresponds to the light red zone in the plots).

Secondly, the variance of the stream-wise component of velocity $\langle u'u' \rangle$ is analyzed. Figure 19 shows contour plots taken at the middle of the xz plane, for both simulations. It is noteworthy that the variance near the turbine is

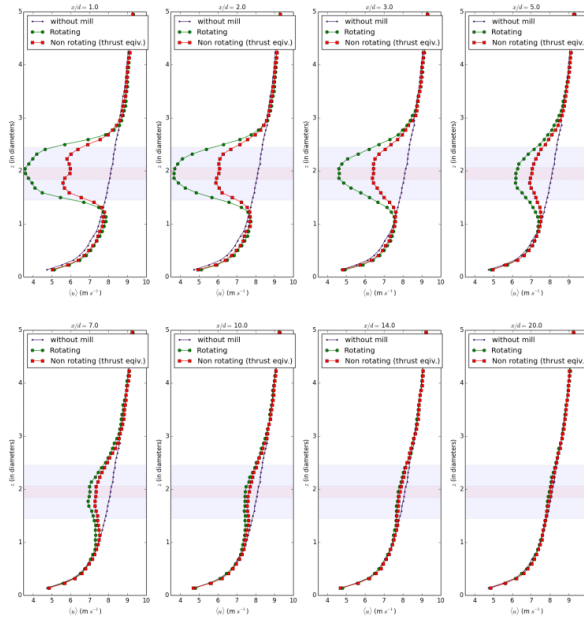


Figure 18: $\langle u \rangle$ profiles at different downstream positions from the turbine.

much higher for the rotating actuator disc simulation, although far from the turbine the differences begin to fade. It is also interesting that in Rotating AMD case the highest amount of variance is generated at the turbine, while for the Non-Rotating AMD the variance at the hub is uniformly strong along the turbine disc, and not just at the tip top. We can observe the impact of this variance anomaly that propagates in the particles environment behind the mill to the left and top. Knowing this, a remedy may consist to impose the values of the second order moments at the left boundary side from the warmup simulation to overcome this weird propagation of the variance.

The same behavior can be seen in the vertical variance profiles, which are plotted at the same downstream positions as was done for $\langle u \rangle$ (see Figure 20). At one diameter from the turbine, we can observe the overestimation of $\langle u'u' \rangle$ for the NR-ADM (in red), in particular in the nacelle area. A best estimate of $a_{nacelle}$ could therefore contribute to reduce this variance anomaly.

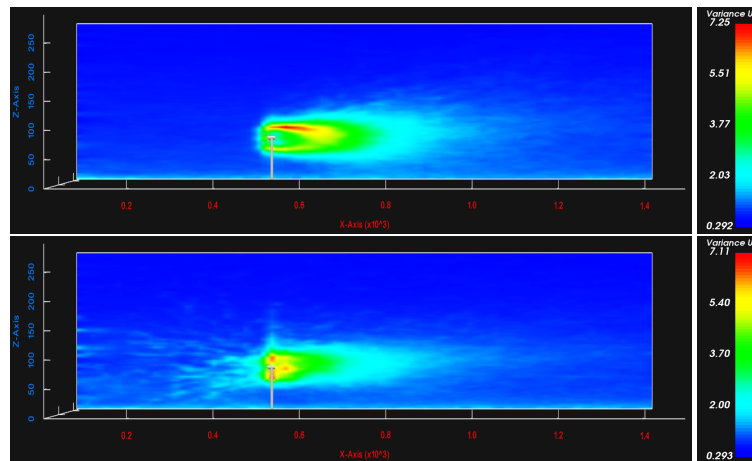


Figure 19: Comparison of xz cross section of variance $\langle u'u' \rangle$ along x : Rotating Actuator Disc (top), Non-Rotating Actuator Disc with a estimated from thrust equivalence (bottom).

Also of interest is the covariance between x and z components of velocity. As before, to compare both simulations, xz contour plots are taken at the middle of the y axis, and vertical profiles are plotted for different downstream positions from the turbine. Again, the rotating model produces stronger values of covariance near the turbine with respect to the non-rotating model, while both tend to equalize as one moves to the far downstream

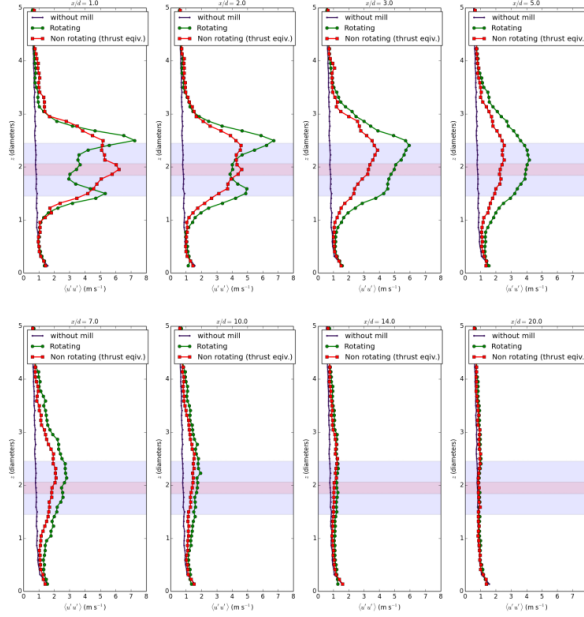


Figure 20: $\langle u'u' \rangle$ profiles at different downstream positions from the turbine.

section. Figure 22 shows the results.

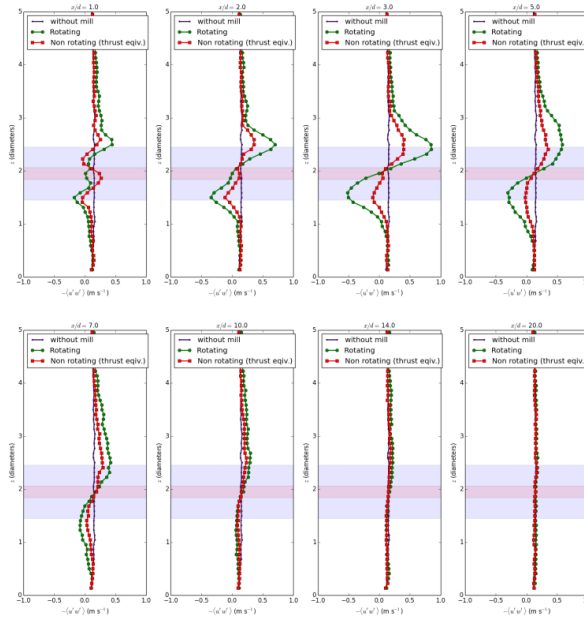


Figure 21: $\langle u'w' \rangle$ profiles at different downstream positions from the turbine.

Figure 21 gives some yz -cross sections of the covariance at the same x -distance to the turbine. The spatial structures of the covariances are similar, but the level of the shear is about three times smaller for the NR-ADM at 3.5 diameters from the turbine.

5.4 Probability distribution functions of the streamwise velocity

One of the main advantages of the *stochastic downscaling method* presented in Section 2 is that it allows access to the instantaneous probability distribution functions of the wind velocity field at each time and position. In the case of mill simulations, this information may be used for various purposes. Contrary to deterministic methods,

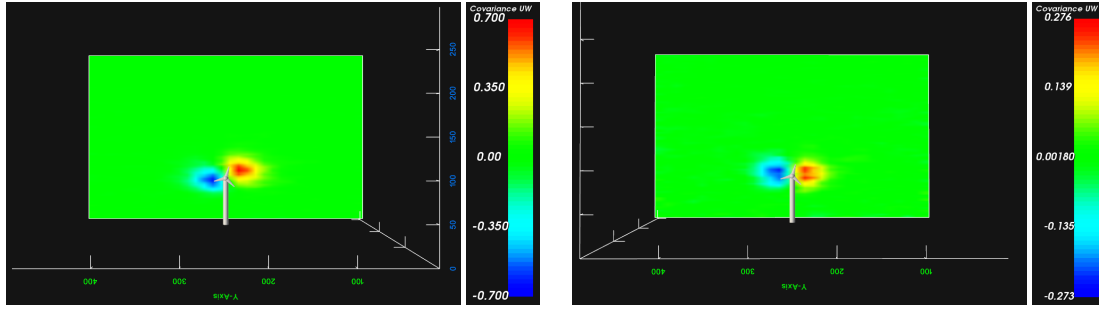


Figure 22: Comparison of the yz cross section of covariance $\langle u'w' \rangle$: Rotating Actuator Disc (left), Non-Rotating Actuator Disc with a estimated from thrust equivalence (right).

the stochastic methodology used here estimates the PDFs of the velocity field in just one simulation, directly by sampling the particle properties in the same way the various statistics presented before are estimated. Plus, no time or spatial averaging is required, and it is possible to see how the PDF varies along the wake of a turbine.

In this section, we present histograms that estimate the PDF of the streamwise velocity component $u = \langle u \rangle + u'$, corresponding to several points before and after the wind turbine, located at the middle of the y axis and at hub height. To obtain each histogram, we discretise velocity space and sample the particle information of all cells in the neighborhood of the point of interest.

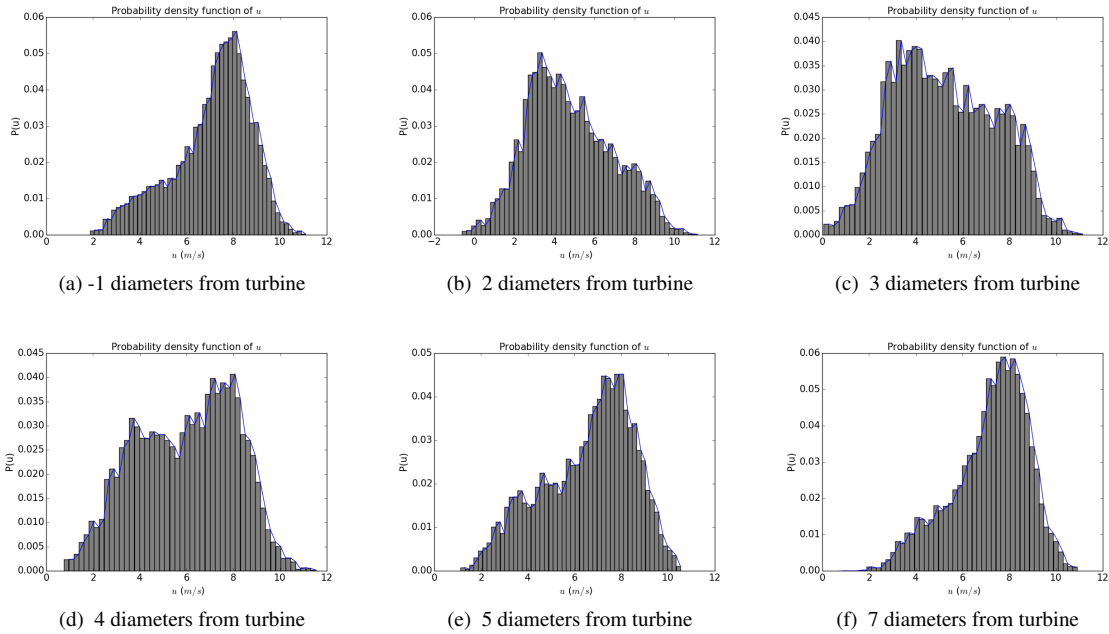


Figure 23: Local distribution of velocity component $u = \langle u \rangle + u'$ at different positions of the x axis.

As can be seen in Figure 23, the distribution of u is fairly non-symmetric at -1 diameter before the turbine (where the flow has not yet felt its presence) with a peak around 8 m s^{-1} , moving to around 3 m s^{-1} in the near turbine wake, progressively recovering to the -1 diameter distribution as one moves downstream from the turbine, and showing a bimodal distribution transition at 3 and 4 diameters from the turbine.

6 Conclusions

In recent years, wind energy has seen an important growth worldwide, and the construction and operation of large wind farms necessitates a better understanding of the flow inside and through them in realistic and dynamic

atmospheric conditions. In the present study, actuator disc methods have been coupled with the SDM solver [4], which uses a *probability distribution function* (PDF) approach to turbulent flow simulation based on stochastic Lagrangian models. The result is an innovative methodology to simulate wind turbines and wind farms operating in atmospheric boundary layer flow. It has been shown that the particle setting of SDM is fit for mill simulations, providing qualitatively consistent estimations of the mill forces and wake properties. Plus, the PDF framework coupled with actuator disc methods allows one to obtain an estimation of the wind variability in the wake of a wind turbine, something which - to the best knowledge of the authors - has never been accomplished before.

The present work is part of a larger project, which seeks to simulate large wind farms with complex topography using the SDM solver. Moreover as a downscaling method, SDM aims to be coupled with dynamic boundary conditions coming typically from mesoscale meteorological solvers. Here, the intent has been to present the methodology, as well as to give a preliminary validation analysis with respect to measurements and a comparison of the different models available, using simple attaptation of actuator disc models and just one turbine. Future stages of the project will produce: (1) a wind farm simulation using dynamical downscaled boundary conditions coming from a coarse meteorological solver; (2) simulations with complex topography; and (3) implementation of more complex models for the blade forces in the SDM framework.

Regarding this last point, we would like to conclude showing some of our ongoing work concerning individual blade visualizations, using the methodology presented in Section 3.2. In particular, it is possible - by modifying the shape of the blade sectors - to obtain estimations of more involved 3D quantities than the ones presented here, such as the vorticity structures generated behind an individual mill. As proof of concept, Figure 24 shows a visualization of such structures for the same turbine presented in Section 5, but using a finer discretization and a smaller domain. Future stages of our project will perfect these preliminary simulations, by introducing more complex models than the Lagrangian actuator disc models presented in this work.

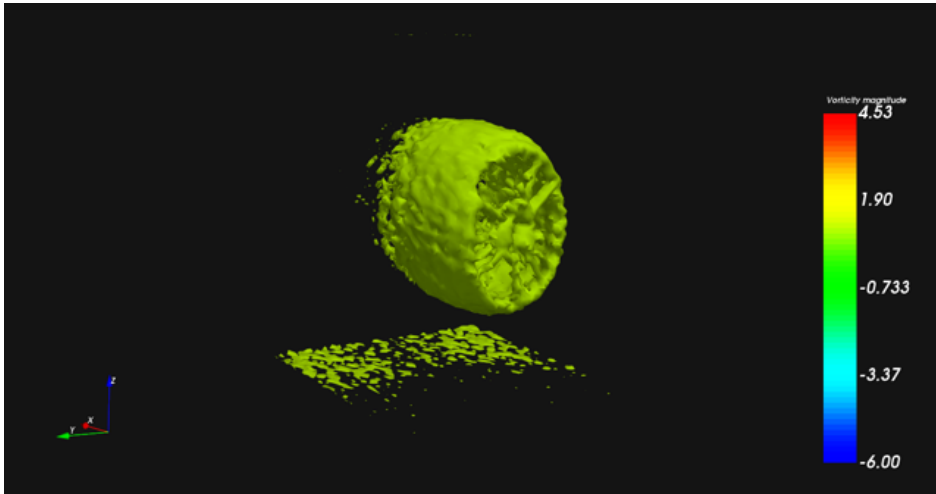


Figure 24: Iso-surfaces of the x component of vorticity behind a wind turbine.

Acknowledgments

The authors thank Philippe Drobinski for very fruitful discussions related to modeling aspects of the atmospheric boundary layer.

A Appendix

On the partial exponential Euler scheme for partially linear SDEs

A part of the drift of the fluid-particle velocity equation (2.1b) is a linear term of the form

$$-G(t, X_t)(U_t - \langle U \rangle(t, X_t)).$$

It means that during a time step Δt , each component of the velocity behaves like a one-dimensional Ornstein-Uhlenbeck process of generic form: given Z_t ,

$$dZ_s = (\alpha(Z_s - m) + \beta) ds + \sigma dW_s, \text{ for } s \in [t, t + \Delta t], \quad (\text{A.1})$$

where here we assume that $\alpha \leq 0$, σ , m and β are constants, or coefficients values frozen at the time t . Typically, from the tensor terms $G(t, X_t)$, we put in α only the diagonal terms, while extra diagonal terms are included in β .

To simplify the presentation, assume that we work coordinate by coordinate, and that Brownian motion W and all the coefficients are valued in \mathbb{R} . Such linear SDE (A.1) has an explicit solution Z valued in \mathbb{R} and given by

$$Z_{t+\Delta t} = e^{\alpha\Delta t} Z_t + \left(m - \frac{\beta}{\alpha}\right) \times (1 - e^{\alpha\Delta t}) + \sigma e^{\alpha\Delta t} \int_t^{t+\Delta t} e^{-\alpha r} dW_r.$$

It is classical to notice that $\sigma e^{\alpha t} \int_t^{t+\Delta t} e^{-\alpha r} dW_r$ is normally distributed with Gaussian law $\mathcal{N}(0, \gamma^2)$, where

$$\gamma^2 = \sigma^2 e^{2\alpha\Delta t} \int_0^{\Delta t} e^{-2\alpha r} dr = \frac{\sigma}{2\alpha} [e^{2\alpha\Delta t} - 1].$$

We thus have the following exact simulation formula for $Z_{t_{n+1}}$, given Z_{t_n}

$$Z_{t_{n+1}} = e^{\alpha\Delta t} \left(Z_{t_n} - m + \frac{\beta}{\alpha} \right) + \left(m - \frac{\beta}{\alpha} \right) + \sigma \frac{\sqrt{1 - \exp(2\alpha\Delta t)}}{\sqrt{-2\alpha}} \eta_n,$$

where (η_n) is a sequence of independent $\mathcal{N}(0, 1)$ -identically distributed random variables. This procedure delivers a discrete time random process with the exact law of the solution of (A.1), as long as m , α , β and σ are constant. In the situation of Equation (2.1b), all those parameters may correspond to frozen coefficients $\alpha_n, \sigma_n, m_n, \beta_n$ during the integration step $[t_n, t_n + \Delta t]$, and the exponential Euler scheme below becomes an approximation procedure:

$$\bar{Z}_{t_{n+1}} = e^{\alpha_n\Delta t} \left(\bar{Z}_{t_n} - m_n + \frac{\beta_n}{\alpha_n} \right) + \left(m_n - \frac{\beta_n}{\alpha_n} \right) + \sigma_n \frac{\sqrt{1 - \exp(2\alpha_n\Delta t)}}{\sqrt{-2\alpha_n}} \eta_n. \quad (\text{A.2})$$

Such exponential scheme strategy was previously considered in the context of Lagrangian two-phase flow modeling by Minier, Peirano and Chibbaro [22], who numerically analyses the ability of such method to be insensitive to some limit value of the time scale $\frac{1}{\alpha_n}$.

Here, our concern slightly differ. To be precise, the main advantage of the partial exponential Euler scheme to the classical Euler scheme, defined as (with the same notation for coefficients)

$$\bar{\bar{Z}}_{t_{n+1}} = \bar{\bar{Z}}_{t_n} + \alpha_n(\bar{\bar{Z}}_{t_n} - m_n)\Delta t + \sigma_n\sqrt{\Delta t}\eta_n,$$

arises from the fact that the rate of strong convergence of the exponential scheme depends only on the time variation of the map $t \mapsto \alpha(t)$ withing its Lipschitz or Hölder regularity parameters, but does not depend directly on the values of α_n . This is not true for the classical Euler scheme (see the computation below).

Concerning the time discretisation part, the convergence of our numerical scheme, described in section 2.2, is mainly driven by the notion of the weak convergence:

$$|\mathbb{E}f(Z_T) - \mathbb{E}f(\bar{Z}_T)| \longrightarrow 0, \text{ when } \Delta t \rightarrow 0,$$

given a set on test function f . But the notion of strong convergence of a p -th moment approximation:

$$(\mathbb{E}[|Z_T - \bar{Z}_T|^p])^{1/p} \longrightarrow 0, \text{ when } \Delta t \rightarrow 0$$

plays also an important role when one mix a SDE time discretisation scheme with a Monte Carlo procedure. Indeed, a particular attention should be paid to the upper-bound of the overall variance of the error: when

$$\mathbb{E}f(Z_T) \text{ is approximated by } \frac{1}{N} \sum_{i=1}^N f(\bar{Z}_T^{(i)}),$$

classical error analysis decomposes the error in the time discretisation error part (bias bound) and the mean square Monte Carlo error part

$$|\mathbb{E}f(Z_T) - \mathbb{E}f(\bar{Z}_T)| + \sqrt{\mathbb{E} \left[\left(\mathbb{E}f(\bar{Z}_T) - \frac{1}{N} \sum_{i=1}^N f(\bar{Z}_T^{(i)}) \right)^2 \right]}.$$

It is well known that the variance of the error

$$\text{Var} \left(\mathbb{E}f(Z_T) - \frac{1}{N} \sum_{i=1}^N f(\bar{Z}_T^{(i)}) \right)$$

can be control with the strong error (as soon as f is for instance Lipschitz, see e.g Kebaier [16]). Thus, in our case the exponential scheme prevents the variance of the error to fluctuate too much with huge values of $|\alpha_n|$. Let us now recall that in our Lagrangian stochastic model, α_n is mainly the square root of the turbulent kinetic energy k in (2.15), computed itself with the PIC estimator (2.7) for the variance of the velocity components. It is then numerically pertinent to prefer the partial exponential scheme in order to stabilize the variance of k estimator.

Notice that all this empirical analysis is contingent to the fact that $(\alpha_n, n \in \mathbb{N})$ stays negative.

For the sake of completeness, we detail below some basic computations in order to compare the behavior of the Euler schemes and Exponential Euler schemes on the generic linear SDE

$$dZ_t = (\alpha(t)(Z_t - m(t)) + \beta(t)) dt + \sigma(t)dW_t, \quad Z_0 \text{ given.} \quad (\text{A.3})$$

On the moments stability and the strong convergence of the discussed schemes for the SDE (A.3)

Assume that the coefficients $\alpha(\cdot)$, $m(\cdot)$, $\beta(\cdot)$, $\sigma(\cdot)$ in (A.3) are continuous on $[0, T]$ for a finite final time T . As an affine SDE (A.3) has a unique strong solution. Using Itô formula, it is easy to check that the solution is given by the following closed expression

$$Z_t = Z_0 e^{\int_0^t \alpha(r) dr} - \int_0^t e^{\int_s^t \alpha(r) dr} \alpha(s) m(s) ds + \int_0^t e^{\int_s^t \alpha(r) dr} \beta(s) ds + \int_0^t e^{\int_s^t \alpha(r) dr} \sigma(s) dW_s \quad (\text{A.4})$$

Freezing the coefficients on each subinterval $[n\Delta t, (n+1)\Delta t)$, we consider the continuous version of the exponential scheme

$$\begin{aligned} \bar{Z}_t &= Z_0 e^{\int_0^t \alpha(\tau(s)) dr} - \int_0^t e^{\int_s^t \alpha(\tau(r)) dr} \alpha(\tau(s)) m((\tau(s))) ds \\ &\quad + \int_0^t e^{\int_s^t \alpha(\tau(r)) dr} \beta((\tau(s))) ds + \int_0^t e^{\int_s^t \alpha(\tau(r)) dr} \sigma((\tau(s))) dW_s \end{aligned} \quad (\text{A.5})$$

where $\tau(t) = \sup_{k \in \{1, \dots, N\}} \{t_k : t_k \leq t\}$, which coincide with the definition

$$\begin{aligned} \bar{Z}_{t_{n+1}} &= \bar{Z}_{t_n} e^{\Delta t \alpha(t_n)} - \int_{t_n}^{t_{n+1}} e^{(t_{n+1}-s)\alpha(t_n)} \alpha(t_n) m(t_n) ds \\ &\quad + \int_{t_n}^{t_{n+1}} e^{(t_{n+1}-s)\alpha(t_n)} \beta(t_n) ds + \int_{t_n}^{t_{n+1}} e^{(t_{n+1}-s)\alpha(t_n)} \sigma(t_n) dW_s \end{aligned}$$

at each time step t_n . Using the closed forms, it is straightforward to compute a bound of any even $2p$ -th moment $p \geq 1$, using successively the Jensen Inequality and Itô Isometry

$$\begin{aligned} \mathbb{E}[Z_t^{2p}] &\leq 4^{2p-1} \mathbb{E} \left[(Z_0^{2p} e^{2p \int_0^t \alpha(r) dr}) \right] + \mathbb{E} \left[\left(\int_0^t e^{\int_s^t \alpha(r) dr} \alpha(s) m(s) ds \right)^{2p} \right] \\ &\quad + \mathbb{E} \left[\left(\int_0^t e^{\int_s^t \alpha(r) dr} \beta(s) ds \right)^{2p} \right] + \mathbb{E} \left[\left(\int_0^t e^{2 \int_s^t \alpha(r) dr} \sigma(s)^2 ds \right)^p \right]. \end{aligned}$$

Assuming in addition that α is valued in $(-\infty, 0]$, we easily get that $\mathbb{E}[Z_t^{2p}]$ is bounded by a constant uniform in α . This is also true for $\mathbb{E}[\bar{Z}_t^{2p}]$ for the same reason. From a different computation, this stability property is also true for the classical Euler scheme

$$\bar{Z}_{t_{n+1}} = \bar{Z}_{t_n} + \int_{t_n}^{t_{n+1}} \alpha(t_n)(\bar{Z}_{t_n} - m(t_n))ds + \int_{t_n}^{t_{n+1}} \beta(t_n)ds + \int_{t_n}^{t_{n+1}} \sigma(t_n)dW_s$$

whose continuous version is

$$\bar{Z}_t = Z_0 + \int_0^t \alpha(\tau(s))(\bar{Z}_{\tau(s)} - m(\tau(s)))ds + \int_0^t \beta(\tau(s))ds + \int_0^t \sigma(\tau(s))dW_s \quad (\text{A.6})$$

Indeed, applying the Itô formula to \bar{Z}_t^{2p} and classical computations

$$\begin{aligned} \mathbb{E}[\bar{Z}_t^{2p}] &= \mathbb{E}[Z_0^{2p}]e^{\int_0^t 2p\alpha(s)ds} + \int_0^t 2pe^{\int_s^t 2p\alpha(s)ds} \{\beta(s) - \alpha(s)m(s)\} \mathbb{E}[\bar{Z}_s^{2p-1}]ds \\ &\quad + \int_0^t 2p(2p-1)e^{\int_s^t 2p\alpha(s)ds} \frac{\sigma(s)^2}{2} \mathbb{E}[\bar{Z}_s^{2p-2}]ds \end{aligned}$$

and again, due to the sign of α , we easily conclude.

To simplify the presentation, we consider now the trajectorial error $t \mapsto (\mathbb{E}[|Z_t - \bar{Z}_t|^{2p}])^{1/2p}$ when other coefficients m , β and σ are some constants. So $Z_t - \bar{Z}_t$ writes

$$\begin{aligned} Z_t - \bar{Z}_t &= (Z_0 - m) \left(e^{\int_0^t \alpha(s)ds} - e^{\int_0^t \alpha(\tau(s))ds} \right) + \beta \int_0^t \left(e^{\int_s^t \alpha(\tau(r))dr} - e^{\int_s^t \alpha(\tau(r))dr} \right) ds \\ &\quad + \sigma \int_0^t \left(e^{\int_s^t \alpha(r)dr} - e^{\int_s^t \alpha(\tau(r))dr} \right) dW_s. \end{aligned}$$

The strong error bound is then derived from the bound of terms of the form $\mathcal{E}_t := \left(e^{\int_0^t \alpha(s)ds} - e^{\int_0^t \alpha(\tau(s))ds} \right)$, that also writes

$$\mathcal{E}_t = e^{\int_0^t \alpha(\tau(s))ds} \int_0^t \left(\alpha(s) - \alpha(\tau(s)) \right) e^{\int_s^t \alpha(r)dr} e^{-\int_0^s \alpha(\tau(r))dr} ds.$$

This last expression leads to the upper bound $|\mathcal{E}_t| \leq \int_0^t |\alpha(s) - \alpha(\tau(s))| \leq L\Delta t$, when for instance α is Lipschitz with constant L . Using again Jensen Inequality and Itô Isometry, we get that $\sup_{t \in [0, T]} \mathbb{E}[|Z_t - \bar{Z}_t|^{2p}] \leq C|\mathcal{E}_t|^p$ where C does not depend on α . In particular, when α is also a constant, the strong error vanishes and we recover the fact that the exponential scheme is exact in that case.

The strong convergence for the Euler scheme differs on this last point, even when all the coefficients are some constant. Indeed, starting with the Itô formula, we have the following

$$\begin{aligned} \mathbb{E}[(Z_t - \bar{Z}_t)^{2p}] &= \int_0^t 2p\alpha \mathbb{E}[(Z_s - \bar{Z}_s)^{2p-1} (Z_s - \bar{Z}_{\tau(s)})] ds \\ &= \int_0^t 2p\alpha \mathbb{E}[(Z_s - \bar{Z}_s)^{2p}] ds + \int_0^t 2p\alpha \mathbb{E}[(Z_s - \bar{Z}_s)^{2p-1} (\bar{Z}_s - \bar{Z}_{\tau(s)})] ds. \end{aligned}$$

From that point, if α is negative, the first term in the right hand side disappears, but the second one, multiplied by α is not a signed term, so any Young or Hölder inequality to separate this second term in what is called the local error $\mathbb{E}[(\bar{Z}_s - \bar{Z}_{\tau(s)})^{2p}]$ with the iteration term $\mathbb{E}[(Z_s - \bar{Z}_s)^{2p}]$ will make appear a $|\alpha|$ in the final bound. For instance, with Young inequality and next Grönwall lemma

$$\mathbb{E}[(Z_t - \bar{Z}_t)^{2p}] \leq \int_0^t (2p-1)|\alpha| \mathbb{E}[(Z_s - \bar{Z}_s)^{2p}] ds + \int_0^t |\alpha| \mathbb{E}[(\bar{Z}_s - \bar{Z}_{\tau(s)})^{2p}] ds \leq C\Delta t^p$$

with a constant C that depends on $|\alpha|$.

References

- [1] I.H. Abbott and A.E. von Doenhoff. *Theory of Wing Sections*. Dover Publications, 1959. 21
- [2] M. Bergmann and A. Iollo. Numerical simulation of horizontal-axis wind turbine (HAWT). In International Conference on Computational Fluid Dynamics (ICCFD7), 2012. 1
- [3] F. Bernardin, M. Bossy, C. Chauvin, P. Drobinski, A. Rousseau, and T. Salameh. Stochastic Downscaling Methods : Application to Wind Refinement. *Stoch. Environ. Res. Risk. Assess.*, 23(6), 2009. 1, 4, 5, 7
- [4] F. Bernardin, M. Bossy, C. Chauvin, J-F. Jabir, and A. Rousseau. Stochastic Lagrangian Method for Downscaling Problems in Computational Fluid Dynamics. *ESAIM: M2AN*, 44(5):885–920, 2010. 1, 2, 4, 28
- [5] M. Bossy, J. Fontbona, P-E. Jabin, and J-F. Jabir. Local Existence of Analytical Solutions to an Incompressible Lagrangian Stochastic Model in a Periodic Domain. *Communications in Partial Differential Equations*, 38(7):1141–1182, 2013. 3, 4
- [6] M. Bossy and J.-F. Jabir. Lagrangian stochastic models with specular boundary condition. *Journal of Functional Analysis*, 268(6):1309 – 1381, 2015. 3
- [7] P. Carlotti. Two-point properties of atmospheric turbulence very close to the ground: Comparison of a high resolution les with theoretical models. *Boundary-Layer Meteorology*, 104(3):381–410, 2002. 7, 8
- [8] L.P. Chamorro and F. Porté-Agel. Effects of thermal stability and incoming boundary-layer flow characteristics on wind-turbine wakes: A wind-tunnel study. *Boundary-Layer Meteorology*, 136(3):515–533, 2010. 15, 16
- [9] P. Drobinski. *Wind and Solar Renewable Energy Potential Resources Estimation*, chapter Solar energy conversion and photoenergy systems. Encyclopedia of Life Support Systems. Encyclopedia of Life Support Systems (EOLSS), Developed under the Auspices of the UNESCO, Eolss Publishers, Oxford, UK, 2014. 6
- [10] P. Drobinski, P. Carlotti, J.-L. Redelsperger, V. Masson, R.M. Banta, and R.K. Newsom. Numerical and experimental investigation of the neutral atmospheric surface layer. *J. Atmos. Sci.*, (64):137–156, 2007. 6, 19
- [11] P.-A. Durbin and C.-G. Speziale. Realizability of second-moment closure via stochastic analysis. *J. Fluid Mech.*, 280:395–407, 1994. 6
- [12] A. El Kasmi and C. Masson. An extended model for turbulent flow through horizontal-axis wind turbines. *Journal of Wind Engineering and Industrial Aerodynamics*, 96(1):103 – 122, 2008. 9
- [13] A. Hallanger and I.Ø. Sand. CFD Wake Modelling with a BEM Wind Turbine Sub-Model. *Modeling, Identification and Control*, 34(1):19–33, 2013. 1
- [14] M. Hansen. *Aerodynamics of wind turbines*. Earthscan, London, 2008. 9, 10, 21, 23
- [15] D.C. Haworth. Progress in probability density function methods for turbulent reacting flows. *Progress in Energy and Combustion Science*, 36(2):168 – 259, 2010. 1
- [16] A. Kebaier. Statistical romberg extrapolation: a new variance reduction method and applications to option pricing. *The Annals of Applied Probability*, 15(4):2681–2705, 2005. 30
- [17] P.M. Lafore et al. The meso-nh atmospheric simulation system. part i: Adiabatic formulation and control simulations. *Annales Geophysicae*, 16:90–109, 1998. 8
- [18] J.F. Manwell, J.G. McGowan, and A.L. Rogers. *Wind Energy Explained: Theory, Design and Application*. John Wiley & Sons, Ltd, 2002. 9, 10, 23
- [19] I. Masters, R. Malki, A.J. Williams, and T.N. Croft. A modified k-epsilon turbulence model for tidal stream turbine simulations using a coupled bem-cfd model. ICOWE, 2012. 9
- [20] R. Mikkelsen. *Actuator Disc Methods Applied to Wind Turbines*. Doctoral dissertation, Technical University of Denmark, 2003. 9
- [21] J.-P. Minier and E. Peirano. The pdf approach to turbulent polydispersed two-phase flows. *Physics Reports*, 352(1-3):1–214, 2001. 1
- [22] J.-P. Minier, E. Peirano, and S. Chibbaro. Weak first- and second-order numerical schemes for stochastic differential equations appearing in Lagrangian two-phase flow modeling. *Monte Carlo Methods and Applications*, 9(2):129–135, 2003. 29
- [23] J.-P. Minier and J. Pozorski. Wall-boundary conditions in probability density function methods and application to a turbulent channel flow. *Physics of Fluids*, 11(9):2632–2644, 1999. 7, 8
- [24] S.B. Pope. Lagrangian pdf methods for turbulent flows. *Annu. Rev. Fluid Mech.*, 26:23–63, 1994. 2, 4
- [25] S.B. Pope. *Turbulent flows*. Cambridge University Press, Cambridge, 2000. 1, 2, 3, 4, 6
- [26] F. Porté-Agel, Hao Lub, and Y.-T. Wu. A large-eddy simulation framework for wind energy applications. In *In the Fifth International Symposium on Computational Wind Engineering (CWE2010)*, 2010. 9

- [27] P.-A. Raviart. An analysis of particle methods. In *Numerical methods in fluid dynamics (Como, 1983)*, volume 1127 of *Lecture Notes in Math.*, pages 243–324. Springer, Berlin, 1985. 4
- [28] P.E. Réthoré, N.N. Sørensen, A. Bechmann, and F. Zahle. Study of the atmospheric wake turbulence of a cfd actuator disc model. In *In Proceedings of European Wind Energy Conference*, Marseille, France, 2009. 16-19 March. 10
- [29] H. Schmidt and U. Schumann. Coherent structure of the convective boundary layer derived from large-eddy simulations. *J. Fluid Mech.*, 1989. 8
- [30] J.N. Sørensen and A. Myken. Unsteady actuator disc model for horizontal axis wind turbines. *Journal of Wind Engineering and Industrial Aerodynamics*, 39(1–3):139 – 149, 1992. 1
- [31] S. Sunada, A. Sakaguchi, and K. Kawachi. Airfoil section characteristics at a low reynolds number. *ASME. J. Fluids Eng.*, 119(1):129–135, 1997. 17
- [32] Y.-T. Wu and F. Porté-Agel. Large-eddy simulation of wind-turbine wakes: Evaluation of turbine parametrisations. *Boundary-Layer Meteorology*, 138(3):345–366, 2011. 15, 17, 18, 24
- [33] Y.-T. Wu and F. Porté-Agel. Simulation of turbulent flow inside and above wind farms: Model validation and layout effects. *Boundary-Layer Meteorology*, 146(2):181–205, 2013. 9