



HAL
open science

Regional conduction slowing can explain inferolateral J waves and their attenuation by sodium channel blockers

Mark Potse, Veronique M F Meijborg, Charly N W Belterman, Jacques M T de Bakker, Chantal E Conrath, Ruben Coronel

► To cite this version:

Mark Potse, Veronique M F Meijborg, Charly N W Belterman, Jacques M T de Bakker, Chantal E Conrath, et al.. Regional conduction slowing can explain inferolateral J waves and their attenuation by sodium channel blockers. Annual workshop of Liryc - Electrophysiology and heart modeling institute, Sep 2016, Pessac, France. , 2016. hal-01393102

HAL Id: hal-01393102

<https://inria.hal.science/hal-01393102>

Submitted on 6 Nov 2016

HAL is a multi-disciplinary open access archive for the deposit and dissemination of scientific research documents, whether they are published or not. The documents may come from teaching and research institutions in France or abroad, or from public or private research centers.

L'archive ouverte pluridisciplinaire **HAL**, est destinée au dépôt et à la diffusion de documents scientifiques de niveau recherche, publiés ou non, émanant des établissements d'enseignement et de recherche français ou étrangers, des laboratoires publics ou privés.



Distributed under a Creative Commons Attribution 4.0 International License



ELECTROPHYSIOLOGY AND HEART MODELING INSTITUTE
BORDEAUX

Regional conduction slowing can explain inferolateral J waves and their attenuation by sodium channel blockers



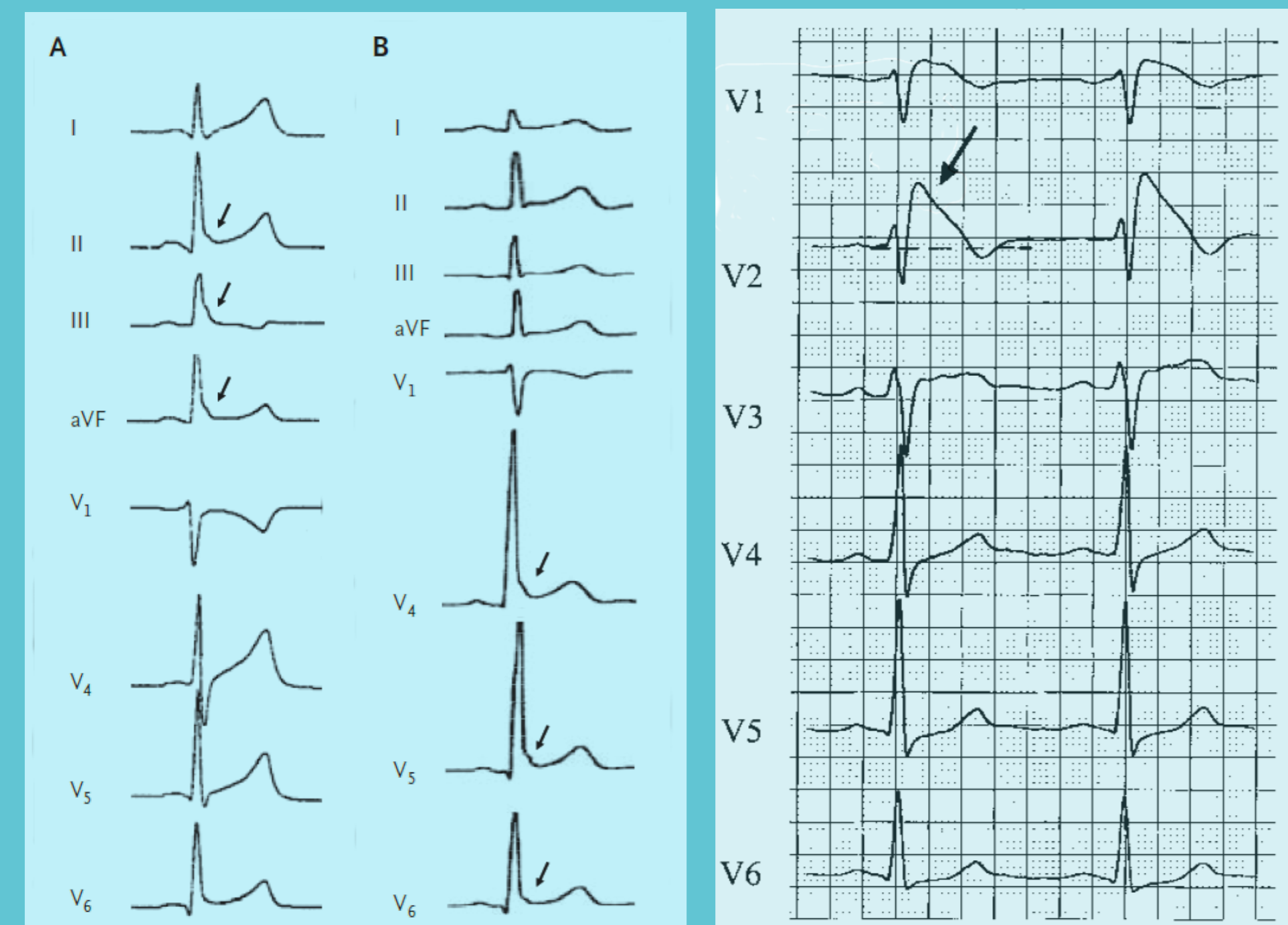
Mark Potse^{1,2} Veronique M. F. Meijborg³ Charly N. W. Belterman^{1,3}
Jacques M. T. de Bakker³ Chantal E. Conrath³ Ruben Coronel^{1,3}

¹IHU Liryc, Electrophysiology and Heart Modeling Institute, fondation Bordeaux Université, F-33600 Pessac-Bordeaux, France; ²CARMEN Research Team, Inria, F-33400 Talence, France; ³Cardiology Department, Academic Medical Center, University of Amsterdam



INTRODUCTION

J waves in the ECG are usually harmless, but when they occur in inferolateral leads they are associated with an increased risk of ventricular fibrillation. Similar waves occur in Brugada syndrome (BS) but then in right precordial leads. But when sodium-channel blockers are administered, J waves in BS increase while inferolateral J waves decrease (Roten et al. 2012). Our purpose was to **test different hypotheses to explain inferolateral J waves and the effect of sodium block.**

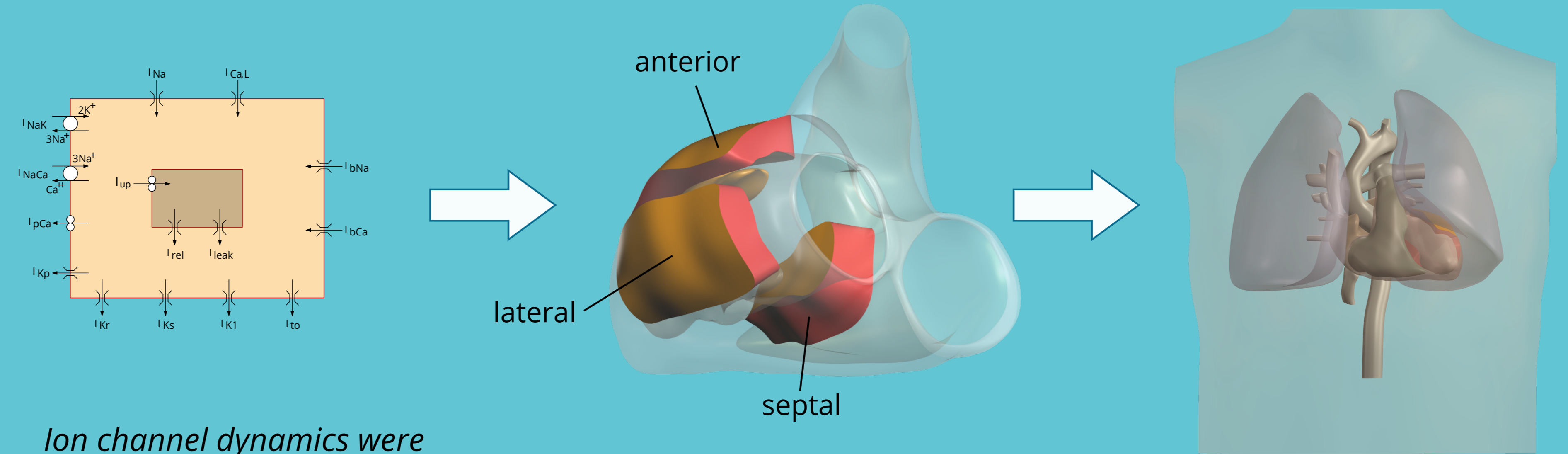


Inferolateral J waves
(Haïssaguerre et al. NEJM 358:2016, 2008)

Brugada type 1
(Wilde et al. Circulation 106:2514, 2002)

SIMULATION STUDIES

The effects of reduced Na current, reduced coupling, and increased transient outward current were evaluated with computer simulations using a detailed model of the human heart and torso.



Ion channel dynamics were simulated using the model by Ten Tusscher et al. (2004)

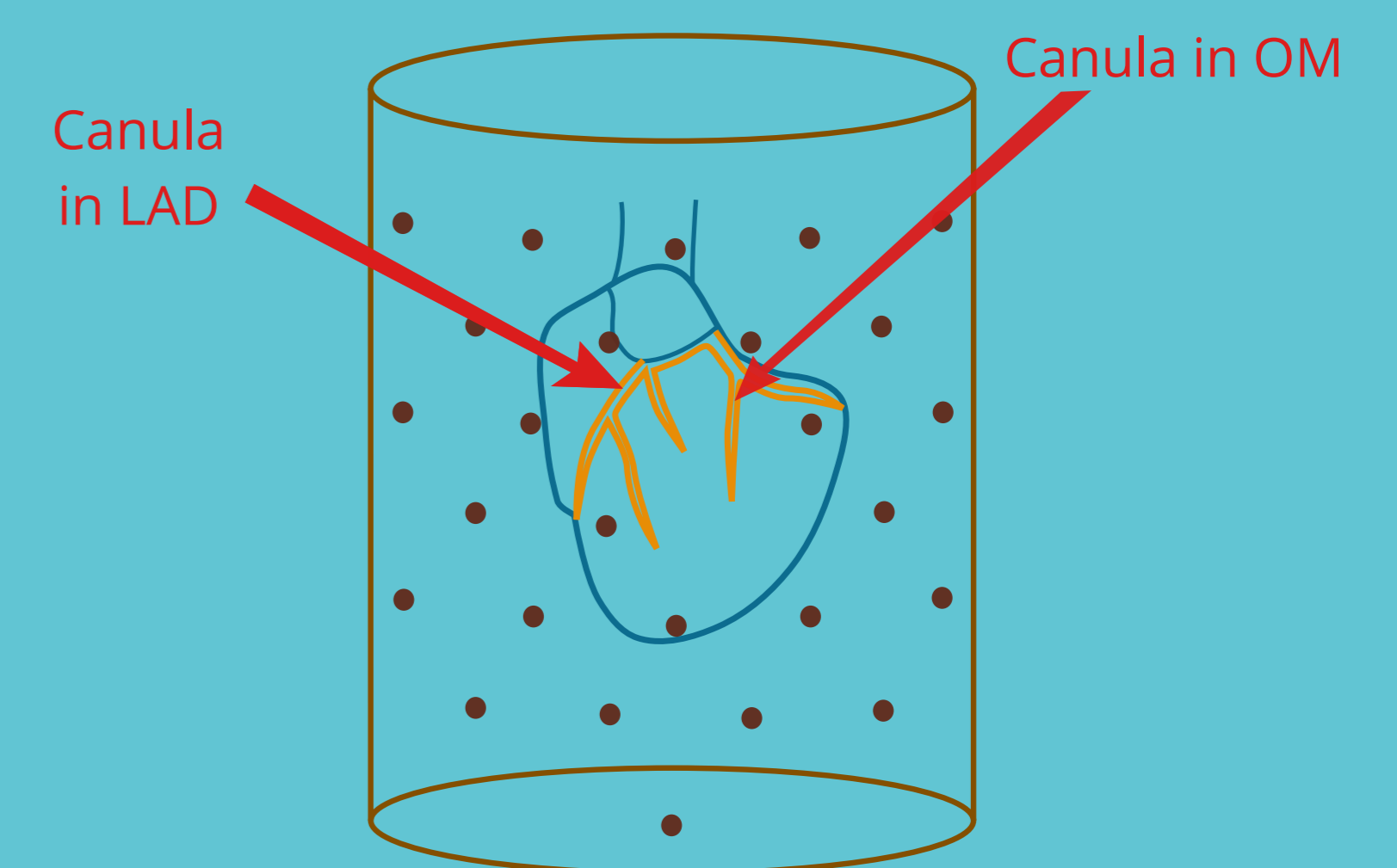
Model properties were locally modified in 3 zones

The ECG was computed in an inhomogeneous torso model

Propagating action potentials were simulated with a monodomain reaction-diffusion model. At 1-ms intervals the simulated transmembrane currents were inserted in a torso model and a static bidomain problem was solved to obtain the ECG.

EXPERIMENTAL STUDIES

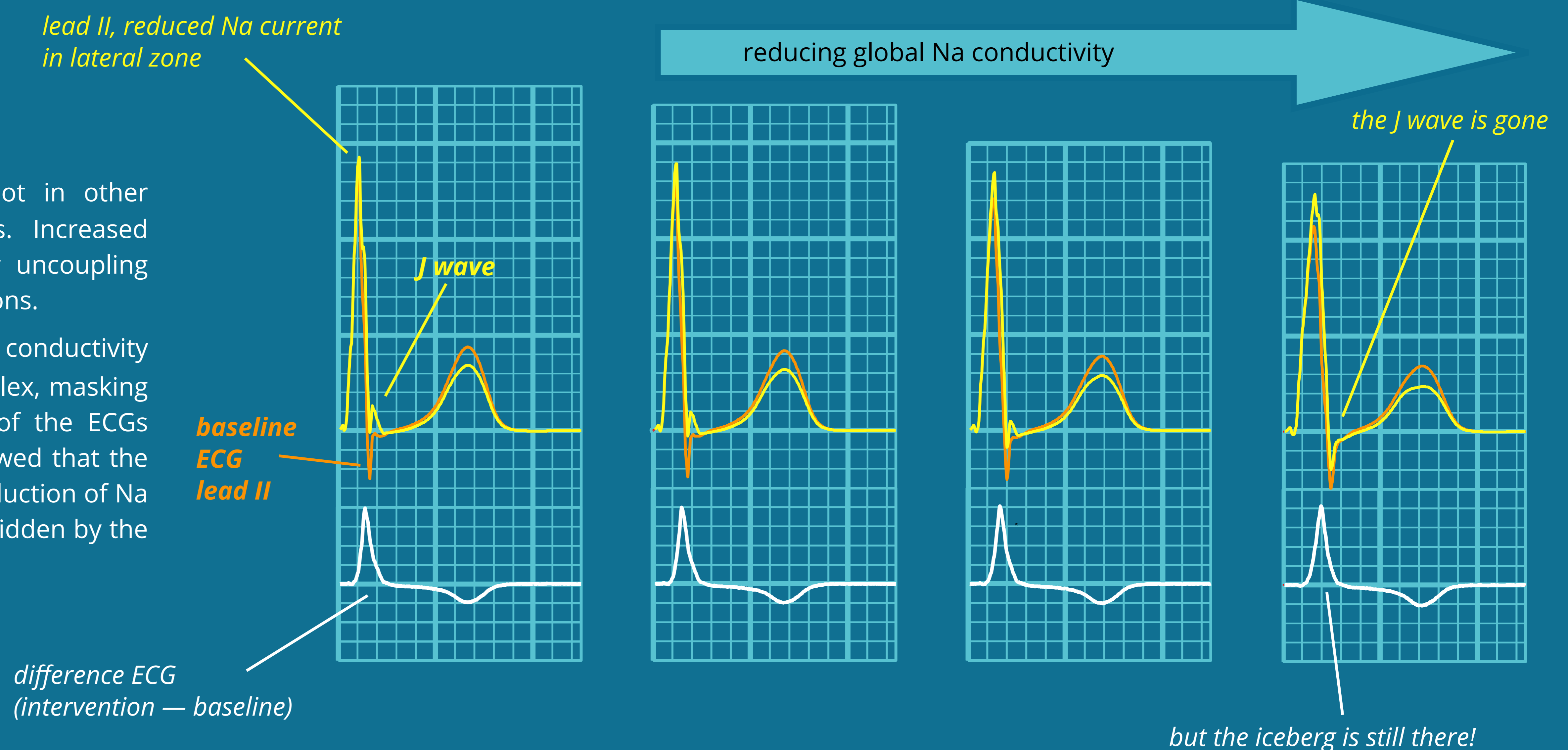
Key findings were backed up with experiments in explanted pig hearts. To obtain pseudo-ECGs the hearts were placed in a container, filled with perfusion fluid, with electrodes attached to the surface. Local interventions were made by selectively infusing medication in the obtuse marginal (OM) or left anterior descending (LAD) coronary artery.



RESULTS

Reduced Na current in lateral but not in other regions induced inferolateral J waves. Increased transient outward current and cellular uncoupling caused only subthreshold J-point elevations.

Global reduction of Na-channel conductivity deformed and prolonged the QRS complex, masking the inferolateral J waves. Subtraction of the ECGs with and without local intervention showed that the ECG change associated with the local reduction of Na current was not reduced, but was only hidden by the expanding QRS complex.



CONCLUSION

Regionally reduced Na current can explain inferolateral J waves. The normally late activation of the lateral region is crucial for the development of J waves and may explain the special importance of the inferolateral leads. The proposed mechanism also explains attenuation of J waves by Na-channel blockers.

LITERATURE

- Meijborg VMF, Potse M, et al. *Front. Physiol.*, 7:365, 2016.
- MacFarlane PW, et al. *JACC* 66:470, 2015.
- Roten L, et al. *Heart Rhythm* 9:232, 2012
- Ten Tusscher KHJ, et al. *AJP-H* 286:1573, 2004

ACKNOWLEDGEMENTS

This work was granted access to HPC resources of IDRIS under GENCI allocation x2015037379. Simulations ran on the IBM BlueGene/Q system Turing.

