



**HAL**  
open science

# Highly Reduced Model of the Cardiac Function for Fast Simulation

Marc-Michel Rohé, Roch Molléro, Maxime Sermesant, Xavier Pennec

► **To cite this version:**

Marc-Michel Rohé, Roch Molléro, Maxime Sermesant, Xavier Pennec. Highly Reduced Model of the Cardiac Function for Fast Simulation. IEEE - IVMSP Workshop 2016, Jul 2016, Bordeaux, France. pp.5, 10.1109/IVMSPW.2016.7528214 . hal-01373715

**HAL Id: hal-01373715**

**<https://inria.hal.science/hal-01373715v1>**

Submitted on 30 Sep 2016

**HAL** is a multi-disciplinary open access archive for the deposit and dissemination of scientific research documents, whether they are published or not. The documents may come from teaching and research institutions in France or abroad, or from public or private research centers.

L'archive ouverte pluridisciplinaire **HAL**, est destinée au dépôt et à la diffusion de documents scientifiques de niveau recherche, publiés ou non, émanant des établissements d'enseignement et de recherche français ou étrangers, des laboratoires publics ou privés.

# HIGHLY REDUCED MODEL OF THE CARDIAC FUNCTION FOR FAST SIMULATION

*Marc-Michel Rohé, Roch Molléro, Maxime Sermesant and Xavier Pennec*

Inria Sophia-Antipolis, Asclepios Research Group, Sophia-Antipolis, France

## ABSTRACT

In this article we present a drastic dimension reduction method to link the biophysical parameters of an electromechanical model of the heart with a compact representation of cardiac motion. Our approach relies on a projection of the displacement fields along the whole cardiac motion to the space of reduced-polyaffine transformations. Using these transformations, not only we describe the motion using a very small number of parameters but we show that each of these parameters has a physiological meaning. Moreover, using a PLS regression on a learning set made of a large number of simulations, we are able to find which of the input parameters of the model most impact the motion and what are the main relations mapping the polyaffine representation to the parameters of the model. We illustrate the potential of this method for building a direct and very fast model characterized by a highly reduced number of parameters.

## 1. INTRODUCTION

Modelling of the heart had an increasing interest in the recent years as it provides a way to better assess the cardiac function and predict its evolution. In order to estimate subject-specific model parameters, cardiac motion is often used, as it can be extracted from medical images. However, given the complex dynamics of cardiac motion, its analysis and its link with the underlying physical parameters of the cardiac tissue are difficult to achieve. This complexity of the model is due to different factors: the number of input parameters, the complexity of the cardiac motion - represented by 3D-vector fields defined for a temporal discretization of the cycle - and the non-linear relationship between the input and output. In this article, we introduce a new method to reduce a cardiac motion model to very few parameters by reducing the dimension of the output motion and estimating the main modes of variation linking biophysical parameters and cardiac motion.

A cardiac biophysical model can be described as a function  $f$  which maps a geometry  $S$  (discretely represented by a segmented mesh: a finite set of points in  $\mathbb{R}^3$ ) and a set of input parameters  $\Theta = (\theta_i)_{i=1,\dots,Q}$  to the simulation of the motion of this geometry through the cardiac cycle  $\mathcal{M} = (S_t)_{0 < t < 1}$ :

$$\mathcal{M} = (S_t)_{0 < t < 1} = f(S_0, \theta_1, \dots, \theta_i, \dots, \theta_M). \quad (1)$$

In order to reduce such model, we first need to be able to express the cardiac motion  $\mathcal{M} = (S_t)_{0 < t < 1}$  by a reduced number of parameters  $\mathbf{M} = (m_j)_{j=1,\dots,N}$ . To do so, we use a polyaffine projection [1] which we further develop by expressing the parameters on a basis adapted to the heart geometry and his motion [2]. In this new frame we only project on the 6 (instead of 12 for standard affine) most relevant parameters. We show that, not only the parameters of this reduced-polyaffine projection gives a very good approximation of the whole cardiac motion, but also that each of these parameters is physiologically interpretable. We then learn the relation between both the reduced-polyaffine parameters  $\mathbf{M}$  and the input parameters  $\Theta$  of the model with a Partial Least Square (PLS) regression. We build a direct forward model using only a highly reduced number of parameters and show for 100 *test* simulations that we are able to reconstruct the motion directly using our surrogate model given by the the first modes of the PLS regression that is very close to the full model computation while being way faster to compute.

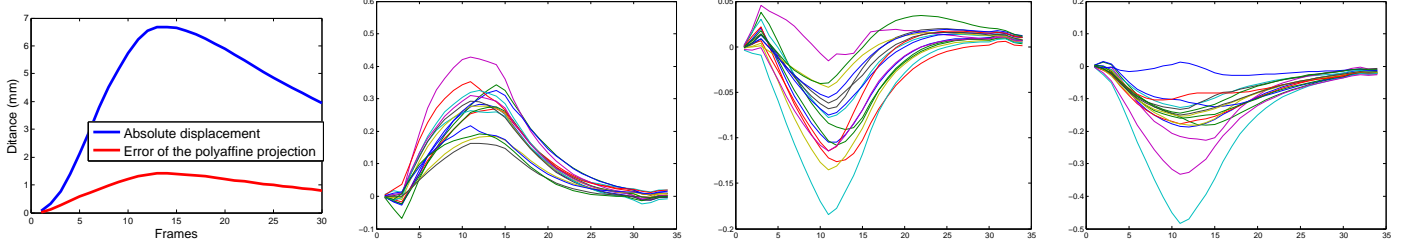
Such approach is a hybrid method between recently developed hyper-reduced models, looking for a lower dimensional representation of the spatial state variables [3] and the meta-models, looking for correlations between input and output of models [4]. One important difference is that we explicitly define the first dimension reduction in the spatial domain in order to have meaningful parameters, related to regional deformations. These parameters define transformations that are independent of the spatial frame and position chosen and therefore can be extended as such for any new geometry.

## 2. REDUCED-POLYAFFINE PROJECTION FOR COMPACT CARDIAC MOTION REPRESENTATION

In this section, we propose a method to project a given cardiac motion  $\mathcal{M}$  to a subspace of finite dimension in which it will be represented by a set of parameters  $\mathbf{M} = (m_j)_{j=1,\dots,N}$ :

$$\pi : \mathcal{M} \rightarrow \mathbf{M} = (m_1, \dots, m_j, \dots, m_N).$$

We suppose we have a cardiac motion represented on a temporal discretization of the cycle by  $T$  displacements fields  $(\tilde{\mathbf{D}}_t)_{t=1,\dots,T}$  mapping each point of the initial mesh  $S_0$  to the corresponding point of the mesh  $S_t$  at frame  $t$ . Instead of looking at displacements fields, we choose to represent the cardiac motion by stationary velocity fields (SVF) such that



**Table 1.** Polyaffine projection for a cardiac motion. (Left) figure: error of the projection versus absolute displacement. (Right) figures: diagonal parameters over time of the polyaffine matrix for each of the region of the left ventricle from which we can recognize (resp. from left to right) the radial, longitudinal and circumferential strains.

$\tilde{\mathbf{v}}_t = \log \tilde{\mathbf{D}}_t$ . As described in [5], working with SVF allows us to perform vectorial statistics on diffeomorphisms, while preserving the invertibility constraint, contrary to the Euclidian statistics on displacement fields. Since the space of the SVF is dense, we need to reduce the dimension by projection onto a lower dimensional space. To do so, we will use the polyaffine projection [1].

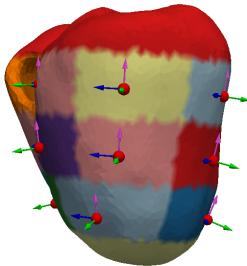
By defining  $K$  regions and associated smooth weights, we describe locally affine deformations using few parameters while still being globally invertible. The polyaffine transformation is the weighted sum of these locally affine transformations:

$$\mathbf{v}_{\text{poly}}(x) = \sum_{k=1}^K \omega_k(x) \mathbf{M}_k \tilde{x}.$$

We use the standard American Heart Association (AHA) 17 regions for the left ventricle. We also define 10 additional regions dividing the right ventricle in a similar way for a total of  $K = 27$  regions. The weights  $\omega_i$  are normalized Gaussian function around the barycentre of each region [1]. The parameters of the optimal projection of a Stationary Velocity Fields  $v$  onto the space of polyaffine transformations has an analytical solution  $m = \hat{m} = \Sigma^{-1}b$  [6] which minimizes in the least-square sense:

$$C(m_1, \dots, m_N) = \int_{\Omega} \left\| \sum_i \mathbf{v}_{\text{poly}}(x) - \mathbf{v}(x) \right\|^2 dx.$$

In order to get interpretable parameters for each region, we chose to express them in a local coordinate system adapted to the geometry of the heart.



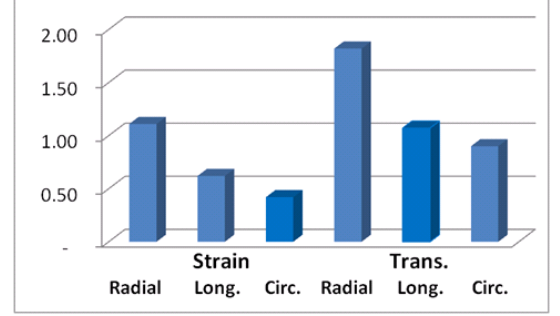
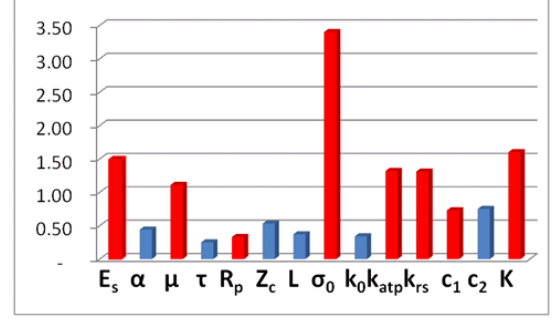
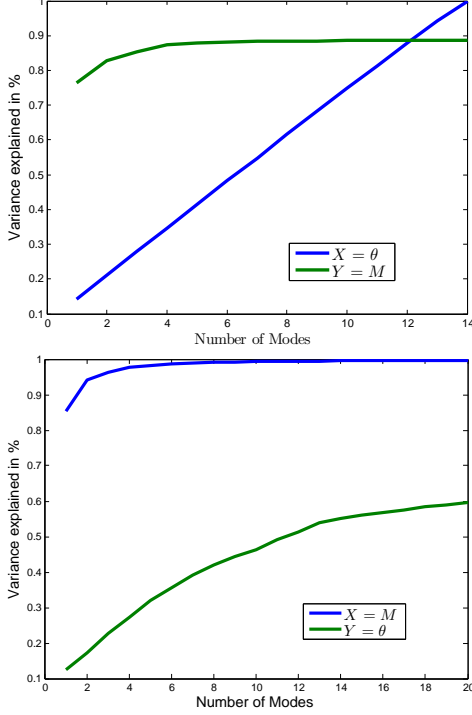
Calling  $\mathcal{R} = (O, \mathbf{e}_1, \mathbf{e}_2, \mathbf{e}_3)$  the original Cartesian coordinate system, we define the local coordinate of the region  $k$  as  $\mathcal{R}'_k = (O_k, \mathbf{e}_1^k, \mathbf{e}_2^k, \mathbf{e}_3^k)$  where  $O_k$  is the barycenter of the region (the red point in the enclosed figure),  $\mathbf{e}_1$  the radial vector (green vector),  $\mathbf{e}_2$  the longitudinal vector (purple vector) and  $\mathbf{e}_3$  the circumferential vector (blue vector).

We can express the 12 affine parameters of the  $3 \times 4$  matrix  $\mathbf{M}_i$  in this new frame. Doing so makes these parameters independent of the global frame  $\mathcal{R}$  on which we are looking the motion. Therefore, these parameters are comparable between different geometries so that the study can be extended to multiple patients. Furthermore, we propose a method to reduce further the representation of the motion by keeping only the most important parameters out of the 12 parameters of the affine matrix. As stated in [2], when expressed in the local basis, the diagonal parameters of the rotation part  $\mathbf{R}$  of the affine matrix (representing the strain in the 3 directions: radial, longitudinal and circumferential) as well as the 3 translation parameters representing the displacements are the most prominent in explaining the motion. Keeping only these 6 parameters leads to a reduction of half of the complexity of our representation of the motion while keeping clinically significant parameters.

We show the results of the polyaffine projection - keeping 6 parameters per regions - for a whole cardiac motion in Fig. 1. The projection has a mean absolute error below  $1mm$ , and we explain more than 80% of the original motion (in  $\mathcal{L}^2$  norm of the velocity field with respect to the whole displacement). Keeping all the 12 parameters would only slightly improve the projection (mean absolute error approx. 10% lower) while increasing the complexity. Finally we see that the 3 diagonal parameters gives a good account of the 3 strains and the curves are in accordance with clinical knowledge: positive radial strains (approx. 30 % at end-systole) and negative longitudinal and circumferential strains (approx.  $-10\%$  and  $-15\%$  at end-systole).

### 3. BIOPHYSICAL MODEL OF THE HEART SIMULATION DATABASE

We use a cardiac mechanical model based on the Bestel-Clement-Sorine (BCS) modeling [7]. This model describes the heart as a Mooney Rivlin passive material, and model the stress along the cardiac fibres according to microscopic scale phenomena. Particularly, this model is compatible with the laws of thermodynamics. It also integrates a circulation model representing the 4 phases of the cardiac model, where



**Table 2.** (Top) row: PLS regression with  $X = \theta$  the predictor variable and  $Y = M$  the dependant variable. (Bottom) row:  $X = M$  and  $Y = \theta$ . (Left) figure: variance explained by the PLS regression with respect to the number of modes. (Right) figure: VIP of each of the parameters.

the aortic pressure is modelled by a 4-parameter Windkessel model. Finally, the electrophysiological pattern of activity is simulated using an Eikonal model, describing the depolarization front propagation from the endocardial surface to the whole myocardium. Fourteen parameters are used by the model:  $(\sigma_0, k_{rs}, k_{atp}, k_0, \alpha, \mu, E_s)$  active parameters,  $(K, c_1, c_2)$  passive parameters and  $(R_p, \tau, Z_c, L)$  for the valve model. We simulate  $S = 500$  cardiac cycles whose input parameters are drawn randomly according to a uniform distribution within a range of parameters chosen as to obtain a physiologically realistic behaviour (following the sensitivity analysis of the model done in [8]). In total, each simulation has therefore  $Q = 14$  specific parameters  $\Theta = \theta_{i=1, \dots, Q}$  of the model. On the other side, for each of these motions we calculate the  $N = 6 \times K \times T$  reduced-polyaffine parameters  $M = (m_{l,k,t})_{l=1, \dots, 6, k=1, \dots, K, t=1, \dots, T} = (m_j)_{j=1, \dots, N}$ .

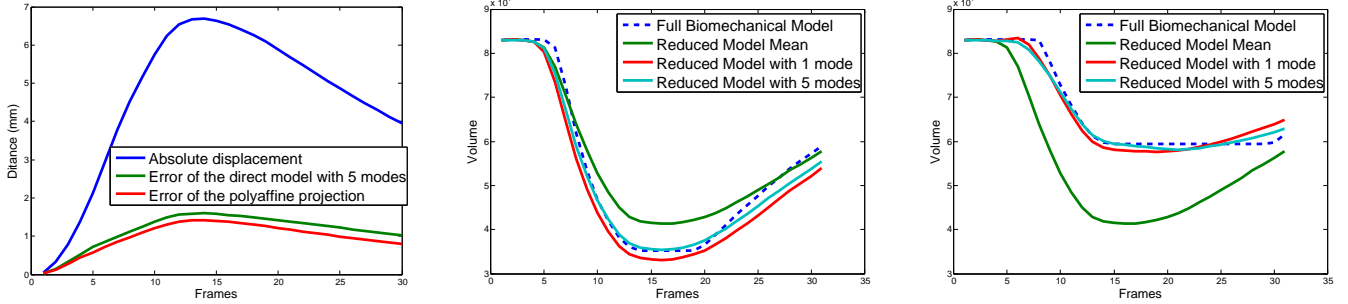
#### 4. PARAMETERS MAPPING THROUGH PLS REGRESSION

In this section, we are looking to link the polyaffine parameters  $M$  with the input parameters of the cardiac model  $\Theta$ . PLS regression finds the multidimensional direction in the  $X$  (the predictors variables) space that explains the maximum multidimensional variance direction in the  $Y$  space (the dependant variables) [9]. It combines both features from the

PCA (the projection of  $Y$  and  $X$  into subspaces of high variance) and standard linear regression (by the search of linear relations between the modes of  $X$  and  $Y$ ). With  $X$  the parameters of the polyaffine and  $Y$  the parameters of the model, PLS returns the modes in the space of the polyaffines transformation which have maximum variance and maximum covariance with the parameters of the model  $Y$ . It is more robust than standard regression when the space of  $X$  and  $Y$  is highly-dimensional because of the embedded dimension reduction when looking for linear relations.

With our two sets of parameters  $\Theta = \theta_i$  and  $M = m_j$ , we can either try to predict the parameters  $M$  from the parameters  $\Theta$  and use this relation to build a highly reduced direct model as we show in section 5, or we can estimate the relation between the parameters  $\Theta$  of the model from the polyaffine parameters  $M$  of the motion to study the part of the motion impacted the most by changes in the parameters of the model. We therefore compute the PLS regression both with  $X = \Theta$  the predictor variable and  $Y = M$  the dependant variable and with  $X = M$  and  $Y = \Theta$ .

In Fig. 2, we show the variance explained by the PLS regression with respect to the number of modes used. With only 5 modes, we can explain more than 90% of the polyaffine parameters variance using only 30% of the variance of the cardiac model parameters. This shows that most of the impact of the parameters of the model can be explained by only few



**Table 3.** (Left) figure: mean absolute displacement of the motion and mean absolute error of the direct model. (Right) and (Middle) figures: Left ventricular volume curve ( $mm^3$ ) defined by the direct model versus the full model for two extreme simulated cases: one with high ejection fraction and one with low ejection fraction.

of the input variable and that 70% of the variance of the parameters of the model impacts the motion represented by the polyaffine parameters by only 10%. On the other side, we do not predict as well the parameters  $Y = \Theta$ , which could be explained by issues of identifiability in the model (several sets of input parameters leading to very close motions), a known fact in complex cardiac motion models. But the parameters we predict are highly correlated to actual change in the motion looking at the explained variance of  $X = M$  with only few modes.

We also calculate the Variable Importance in the Projection (VIP) [10] for both of our regression with 5 modes. VIP compares the variance explained by the modes of the PLS regression for each of the variable in  $X$ . Variables with high impact on the dependant variables will be well estimated by the modes of  $X$  and have high VIP factor. The parameters shown in red are the one that were considered as the most important for personalization in [8]. Our statistical analysis confirms these findings by quantifying the importance of each of these parameters with the VIP. Finally, the analysis of the VIP for the other way shows that radial strain and contraction are the most important motion features to explain the parameters of the model, which is physiologically expected.

## 5. DIRECT HIGHLY REDUCED CARDIAC FUNCTION MODEL

In this section, we build a surrogate cardiac model using the PLS modes of  $X$  and  $Y$  and the linear relation found previously. Our reduced model can be expressed as a linear function  $g$  approximating the function  $f$  from equation 1 and expressed with only  $L$  parameters, the PLS modes, which linearly map the  $Q$  inputs of the model  $\Theta$  to the  $N$  polyaffine parameters  $M$ . This surrogate model has two sources of error compared to the full model. First, the subspace of polyaffine transformations already gives an approximation of the full motion as seen in Section 2, so that the projection of the motion on this subspace is an approximation. Secondly, the polyaffine parameters are estimated from the PLS modes and

are only approximating the optimal polyaffine parameters given by the projection.

We perform 100 new *test* simulations and show in Fig. 3 how well our highly reduced model approximates the motion given by the full model. The mean error of the points of the mesh along motion stays below  $2mm$  meaning that we explain more than 75% of the complete motion. The impact on the volume curve of using an increasing number of modes on top of just the mean parameters is shown for two simulations: one with high ejection fraction and one with low ejection fraction. The first mode already approximates quite well the volume curve for these two extreme cases, showing that this mode is highly correlated with change in the ejection fraction. We can infer that the most prominent variation of the model is related to the ejection fraction (the ratio between the min. volume and the max. volume) which is physiologically expected as it is the most important characteristic to asses the cardiac function efficiency. Adding additional modes to the PLS regression improves the approximation of the reduced model.

## 6. CONCLUSION

In this paper, we proposed an innovative methodology to reduce a whole biophysical cardiac model using polyaffine projection and PLS regression. While the initial model is very complex (as a non-linear application from a large number of parameters to the whole space of displacement fields) and takes about 2 – 3 hours to run on a quad-core 2.10GHz CPU, we are able to explain it with good accuracy with only a couple of modes of a surrogate simplified model running in less than 2 minutes, which still gives an accurate estimation of the ejection fraction. Extension of this method to other inputs of a cardiac function model such as electrophysiology might be possible and give further insight into how each input component impacts the model. The inverse relation found by the PLS regression (between the motion and the model parameters) could also be used to tackle the inverse problem and efficiently personalize the model.

The authors acknowledge the partial funding by the EU FP7-funded project MD-Paedigree (Grant Agreement 600932)

## 7. REFERENCES

- [1] Kristin Meleod, Christof Seiler, Nicolas Toussaint, Maxime Sermesant, and Xavier Pennec, “Regional analysis of left ventricle function using a cardiac-specific polyaffine motion model,” in *Functional Imaging and Modeling of the Heart*. 2013, pp. 483–490, Springer.
- [2] Marc-Michel Rohé, Nicolas Duchateau, Maxime Sermesant, and Xavier Pennec, “Combination of Polyaffine Transformations and Supervised Learning for the Automatic Diagnosis of LV Infarct,” in *Statistical Atlases and Computational Modeling of the Heart (STACOM 2015)*, Munich, Germany, 2015.
- [3] D. Ryckelynck, “Hyper-reduction of mechanical models involving internal variables,” *International Journal for Numerical Methods in Engineering*, vol. 77, no. 1, pp. 75–89, 2009.
- [4] Kristin Tøndel, Ulf G Indahl, Arne B Gjuvslund, Stig W Omholt, and Harald Martens, “Multi-way metamodelling facilitates insight into the complex input-output maps of nonlinear dynamic models,” *BMC Systems Biology*, vol. 6, no. 1, pp. 88, 2012.
- [5] Vincent Arsigny, Olivier Commowick, Xavier Pennec, and Nicholas Ayache, “A log-Euclidean framework for statistics on diffeomorphisms,” in *Proc. of the 9th International Conference on Medical Image Computing and Computer Assisted Intervention (MICCAI’06), Part I*, 2–4 October 2006, number 4190 in LNCS, pp. 924–931.
- [6] Christof Seiler, Xavier Pennec, and Mauricio Reyes, “Capturing the multiscale anatomical shape variability with polyaffine transformation trees,” *Medical Image Analysis (MedIA)*, vol. 16, no. 7, pp. 1371–1384, 2012.
- [7] Julie Bestel, Frédérique Clément, and Michel Sorine, “A biomechanical model of muscle contraction,” in *Medical Image Computing and Computer-Assisted Intervention–MICCAI 2001*. Springer, 2001, pp. 1159–1161.
- [8] Stéphanie Marchesseau, Hervé Delingette, Maxime Sermesant, and Nicholas Ayache, “Fast parameter calibration of a cardiac electromechanical model from medical images based on the unscented transform,” *Biomechanics and Modeling in Mechanobiology*, 2012.
- [9] Roman Rosipal and Nicole Krämer, “Overview and recent advances in partial least squares,” in *Subspace, latent structure and feature selection*, pp. 34–51. Springer, 2006.
- [10] Thanh N. Tran, Nelson Lee Afanador, Lutgarde M.C. Buydens, and Lionel Blanchet, “Interpretation of variable importance in partial least squares with significance multivariate correlation (smc),” *Chemometrics and Intelligent Laboratory Systems*, vol. 138, pp. 153–160, 2014.