



**HAL**  
open science

## Interval observer for SIR epidemic model subject to uncertain seasonality

Pierre-Alexandre Bliman, Bettina d'Avila Barros

► **To cite this version:**

Pierre-Alexandre Bliman, Bettina d'Avila Barros. Interval observer for SIR epidemic model subject to uncertain seasonality. 2016. hal-01309743v1

**HAL Id: hal-01309743**

**<https://inria.hal.science/hal-01309743v1>**

Preprint submitted on 30 Apr 2016 (v1), last revised 26 Nov 2016 (v2)

**HAL** is a multi-disciplinary open access archive for the deposit and dissemination of scientific research documents, whether they are published or not. The documents may come from teaching and research institutions in France or abroad, or from public or private research centers.

L'archive ouverte pluridisciplinaire **HAL**, est destinée au dépôt et à la diffusion de documents scientifiques de niveau recherche, publiés ou non, émanant des établissements d'enseignement et de recherche français ou étrangers, des laboratoires publics ou privés.

# Interval observer for SIR epidemic model subject to uncertain seasonality

Pierre-Alexandre Bliman · Bettina  
D'Avila Barros

Received: date / Accepted: date

**Abstract** The issue of state estimation is considered for a SIR model with seasonal variations and uncertainties in the transmission rate. Assuming continuous measurement of the number of new infectives per unit time, a class of interval observers with estimate-dependent gain is constructed, and asymptotic error bounds are provided. Mathematics Subject Classification (2000) Primary 92D30; Secondary 34C12, 93B07, 93D09, 93D30

**Keywords** Interval observer · Uncertain systems · SIR model · Mathematical epidemiology

## 1 Introduction, presentation of the SIR model

The SIR model with vital dynamics, see e.g. [2,8], is one of the most elementary compartmental models of epidemics. It describes the evolution of the relative proportions of three classes of a population of constant size, namely the susceptibles  $S$ , capable of contracting the disease and becoming infective; the infectives  $I$ , capable of transmitting the disease to susceptibles; and the recovered  $R$ , permanently immune after healing. The corresponding model is as follows:

$$\dot{S} = \mu - \mu S - \beta SI \tag{1a}$$

$$\dot{I} = \beta SI - (\mu + \gamma)I \tag{1b}$$

---

Pierre-Alexandre Bliman (✉)

Escola de Matemática Aplicada, Fundação Getulio Vargas, Rio de Janeiro - RJ, Brazil and Sorbonne Universités, Inria, UPMC Univ Paris 06, Lab. J.L. Lions UMR CNRS 7598, Paris, France

E-mail: pierre-alexandre.bliman@inria.fr

Bettina D'Avila Barros

Escola de Matemática Aplicada, Fundação Getulio Vargas, Rio de Janeiro - RJ, Brazil

E-mail: barrosbettina@gmail.com

The natural birth and mortality rate is  $\mu$  (the disease is supposed not to induce supplementary death rate),  $\gamma$  is the recovery rate, while  $\beta$  represents the transmission rate per infective. All these parameters are positive. We omit here the dynamics of  $R$  (namely  $\dot{R} = \gamma I - \mu R$ ), unnecessary as the total population size is invariant:  $S + I + R \equiv 1$ .

When the parameters are constant, the evolution depends closely upon the ratio  $\frac{\beta}{\mu+\gamma}$ . When the latter is smaller than 1, the disease-free equilibrium is the only equilibrium and it is globally asymptotically stable. It becomes unstable when the ratio is larger than 1, and an asymptotically stable endemic equilibrium then appears.

On the contrary, when the parameters are time-varying, complicated dynamics may occur [9]. We are interested here in estimating the population of the three populations, in an attempt to forecast future epidemic bursts. We use here techniques of interval observers, including output injection, in the spirit e.g. of [5, 11, 4]. The dynamics of the obtained error equation is linear and monotone, asymptotic stability is ensured through the search of a common linear Lyapunov function and adequate choice of the gain as function of the state estimate.

The hypotheses on the model and some qualitative results are presented in Section 2. The considered class of observers is given in Section 3, with some a priori estimates and technical results. The main result is provided in Section 4, where the asymptotic error corresponding to certain gain choice is quantified. Last, illustrative numerical experiments are shown in Section 5.

## 2 Hypotheses on the model and preliminaries

We consider in the sequel that the transmission rate is subjected to uncertain seasonal variations. Relatively modest variations of this type are believed to have the capacity to induce large amplitude fluctuations in the observed disease incidence. This seems due to harmonic resonance, the seasonal forcing exciting frequencies close to the natural near-equilibrium oscillatory frequency [3].

One assumes that the transmission rate  $\beta$  is bounded by two functions  $\beta_{\pm}$ , available in real-time (all functions are supposed locally integrable):

$$\begin{aligned} \beta_-(t) \leq \beta(t) \leq \beta_+(t) \quad \text{for a.e. } t \geq 0, \\ \text{with } 0 < \liminf_{t \rightarrow +\infty} \beta_-(t) \leq \limsup_{t \rightarrow +\infty} \beta_+(t) < +\infty \end{aligned} \quad (2)$$

Our goal is to estimate lower and upper bounds for the three subpopulations. The unique available measurement is supposed to be the incidence rate  $y = \beta SI$ , i.e. the number of new infectives per unit time (typically accessible through epidemiological surveillance). One sees easily that with this output, the system is detectable, but *not* observable at the disease-free equilibrium (where  $I = 0$ ).

The following result provides qualitative estimates of its solutions.

**Lemma 1** *Let the initial condition  $(S(0), I(0))$  be nonnegative and such that  $S(0) + I(0) \leq 1$ . Then the same holds for any  $t \geq 0$ .*

*Proof.* Integrating (1a), (1b) yields  $I(t) = I(0)e^{\int_0^t (\beta(\tau)S(\tau) - (\mu + \gamma)) \cdot d\tau}$ ,  $S(t) = S(0)e^{-\int_0^t (\mu + \beta(\tau)I(\tau)) \cdot d\tau} + \mu \int_0^t e^{-\int_\tau^t (\mu + \beta I)} \cdot d\tau$ , which show that  $S(t), I(t) \geq 0$  for any  $t \geq 0$ ; while integrating the differential inequality  $\dot{S} + \dot{I} \leq \mu(1 - S - I)$  shows that  $S(t) + I(t) \leq 1$  for any  $t \geq 0$ .  $\square$

### 3 A class of nonlinear observer models

We consider in the sequel the following class of observers:

$$\dot{\hat{S}} = \mu - \mu\hat{S} - y + k_S(t)(y - \beta_S\hat{S}\hat{I}) \quad (3a)$$

$$\dot{\hat{I}} = y - (\mu + \gamma)\hat{I} + k_I(t)(y - \beta_I\hat{S}\hat{I}) \quad (3b)$$

where the time-varying gain components  $k_S(t), k_I(t)$  are yet to be defined.

**Lemma 2** *Assume that*

$$k_S(t) \geq 1, \quad k_I(t) \geq -1 \quad \text{for almost every } t \geq 0. \quad (4)$$

*Assume  $\hat{S}(0) \geq 0$ , resp.  $\hat{I}(0) \geq 0$ . Then, for any  $t \geq 0$ ,  $\hat{S}(t) \geq 0$ , resp.  $\hat{I}(t) \geq 0$ .*

*Proof.* One may verify directly that, under assumption (4),  $\dot{\hat{S}} \geq 0$  if  $\hat{S} = 0$ , and  $\dot{\hat{I}} \geq 0$  if  $\hat{I} = 0$ . This proves the announced result.  $\square$

Last, the following technical result will be needed.

**Lemma 3** *Define  $e_S := S - \hat{S}$ ,  $e_I := I - \hat{I}$ . Then,*

$$\begin{pmatrix} \dot{e}_S \\ -\dot{e}_I \end{pmatrix} = \begin{pmatrix} -(\mu + k_S\beta_S\hat{I}) & k_S\beta_S S \\ k_I\beta_I\hat{I} & -(\mu + \gamma + k_I\beta_I S) \end{pmatrix} \begin{pmatrix} e_S \\ -e_I \end{pmatrix} + SI \begin{pmatrix} k_S(\beta_S - \beta) \\ k_I(\beta - \beta_I) \end{pmatrix} \quad (5)$$

*Proof.* One has  $\dot{e}_S = -\mu e_S + k_S(\beta_S\hat{S}\hat{I} - y)$  and  $\dot{e}_I = -(\mu + \gamma)e_I + k_I(\beta_I\hat{S}\hat{I} - y)$ . On the other hand,  $\beta_S\hat{S}\hat{I} - y = (\beta_S - \beta)SI + \beta_S S(\hat{I} - I) + \beta_S\hat{I}(\hat{S} - S) = -SI(\beta - \beta_S) - \beta_S S e_I - \beta_S\hat{I}e_S$ , and similarly for  $\beta_I\hat{S}\hat{I} - y$ . One deduces

$$\begin{pmatrix} \dot{e}_S \\ \dot{e}_I \end{pmatrix} = - \begin{pmatrix} \mu + k_S\beta_S\hat{I} & k_S\beta_S S \\ k_I\beta_I\hat{I} & k_I\beta_I S + \mu + \gamma \end{pmatrix} \begin{pmatrix} e_S \\ e_I \end{pmatrix} - SI \begin{pmatrix} k_S(\beta - \beta_S) \\ k_I(\beta - \beta_I) \end{pmatrix}$$

and finally (5) when using  $-e_I$  instead of  $e_I$ .  $\square$

#### 4 Error estimates for interval observers

Notice first that system (1) is not evidently, or transformable into, a monotone system. The instances of (3) presented in the next result provide a class of interval observers with guaranteed speed of convergence.

**Theorem 4** *Consider the two independent systems*

$$\dot{S}_+ = \mu - \mu S_+ - y + k_{S_+}(t)(y - \beta_-(t)S_+I_-) \quad (6a)$$

$$\dot{I}_- = y - (\mu + \gamma)I_- + k_{I_-}(t)(y - \beta_+(t)S_+I_-) \quad (6b)$$

$$\dot{S}_- = \mu - \mu S_- - y + k_{S_-}(t)(y - \beta_+(t)S_-I_+) \quad (7a)$$

$$\dot{I}_+ = y - (\mu + \gamma)I_+ + k_{I_+}(t)(y - \beta_-(t)S_-I_+) \quad (7b)$$

*i. Assume that  $k_{S_\pm}(t) \geq 1, k_{I_\pm}(t) \geq 0$  for a.e.  $t \geq 0$ . If  $0 \leq S_-(t) \leq S(t) \leq S_+(t)$  and  $0 \leq I_-(t) \leq I(t) \leq I_+(t)$  for  $t = 0$ , then the same holds for  $t \geq 0$ .*

*ii. If in addition the gain components  $k_{S_\pm}(t), k_{I_\mp}(t)$  are chosen such that*

$$\beta_-(t)k_{S_+}(t) - \rho_+\beta_+(t)k_{I_-}(t) = \frac{\gamma}{I_-(t) + \frac{1}{\rho_+}} \quad (8a)$$

$$\beta_+(t)k_{S_-}(t) - \rho_-\beta_-(t)k_{I_+}(t) = \frac{\gamma}{I_+(t) + \frac{1}{\rho_-}} \quad (8b)$$

*for fixed  $\rho_\pm > 0$ , then, writing  $V_+(t) := (S_+(t) - S(t)) + \rho_+(I(t) - I_-(t))$ ,  $V_-(t) := (S(t) - S_-(t)) + \rho_-(I_+(t) - I(t))$ , the state functions  $V_\pm$  are positive definite when the trajectories are initialized according to point *i.*, and<sup>1</sup>*

$$\forall t \geq 0, V_\pm(t) \leq \int_0^t e^{-\int_\tau^t \delta_\pm} \max\{k_{S_\pm}(\tau), \rho_\pm k_{I_\mp}(\tau)\} S(\tau) I(\tau) (\beta_+(\tau) - \beta_-(\tau)) d\tau + e^{-\int_0^t \delta_\pm(\tau) d\tau} V_\pm(0), \quad \text{with } \delta_\pm(t) := \mu + \gamma \frac{I_\mp(t)}{I_\mp(t) + \frac{1}{\rho_\pm}} \quad (9)$$

The proposed controllers guarantee convergence speeds  $\delta_\pm(t)$  that smoothly vary from  $\mu$  (in absence of infectives) to at most  $\mu + \gamma$  (in case of outbreak). Recall that a linear time-invariant *monotone* system is asymptotically stable *iff* it admits a linear Lyapunov function of the type  $V_\pm$  [1, 7, 10]. With this in mind, it may indeed be deduced from the proof (see in particular formula (10)) that the convergence speed of observer of type (6)-(7) is bound to be *at most equal to  $\mu + \gamma$*  in presence of epidemics, and *cannot be larger than  $\mu$*  in absence of infectives<sup>2</sup>. Notice that these bounds do not depend upon the values of  $\beta_\pm$ .

Last, observe that, with the estimate-dependent choice of the gain defined in (8), the error equations may be non monotone. However they fulfill the positivity and stability properties mentioned in the statement.

<sup>1</sup> In accordance with the usual convention, in the following formula the signs  $\pm, \mp$  should be interpreted either everywhere with the upper symbols, or everywhere with the lower ones.

<sup>2</sup> We constrain the closed-loop system to be monotone, so not any closed-loop spectrum can be realized.

*Proof.* We show the results for system (6) only, system (7) is treated similarly.

• Introduce the error terms  $e_{S+} := S_+ - S$  and  $e_{I-} := I - I_-$ . Applying Lemma 3 to system (6) with  $\hat{S} = S_+, \hat{I} = I_-, k_S = k_{S+}, \beta_S = \beta_-, k_I = k_{I-}, \beta_I = \beta_+$  (and therefore  $e_S = -e_{S+}, e_I = e_{I-}$ ) yields

$$\begin{aligned} \begin{pmatrix} \dot{e}_{S+} \\ \dot{e}_{I-} \end{pmatrix} &= - \begin{pmatrix} \dot{e}_S \\ -\dot{e}_I \end{pmatrix} \\ &= - \begin{pmatrix} -(\mu + k_{S+}\beta_-I_-) & k_{S+}\beta_-S \\ k_{I-}\beta_+I_- & -(\mu + \gamma + k_{I-}\beta_+S) \end{pmatrix} \begin{pmatrix} e_S \\ -e_I \end{pmatrix} - SI \begin{pmatrix} k_{S+}(\beta_- - \beta) \\ k_{I-}(\beta_+ - \beta) \end{pmatrix} \\ &= \begin{pmatrix} -(\mu + k_{S+}\beta_-I_-) & k_{S+}\beta_-S \\ k_{I-}\beta_+I_- & -(\mu + \gamma + k_{I-}\beta_+S) \end{pmatrix} \begin{pmatrix} e_{S+} \\ e_{I-} \end{pmatrix} + SI \begin{pmatrix} k_{S+}(\beta - \beta_-) \\ k_{I-}(\beta_+ - \beta) \end{pmatrix} \\ &= \begin{pmatrix} -(\mu + k_{S+}\beta_-I) & k_{S+}\beta_-S_+ \\ k_{I-}\beta_+I_- & -(\mu + \gamma + k_{I-}\beta_+S) \end{pmatrix} \begin{pmatrix} e_{S+} \\ e_{I-} \end{pmatrix} + SI \begin{pmatrix} k_{S+}(\beta - \beta_-) \\ k_{I-}(\beta_+ - \beta) \end{pmatrix}. \end{aligned}$$

The off-diagonal terms of the Jacobian matrix are respectively  $k_{S+}(t)\beta_-(t)S_+(t)$  and  $k_{I-}(t)\beta_+(t)I_-(t)$ , clearly nonnegative for a.e.  $t \geq 0$  due to the hypotheses on the gain components (see Lemma 2). The corresponding system is therefore monotone [6, 12], and any solution of (6) departing with  $e_{S+}(0), e_{I-}(0) \geq 0$  verifies  $e_{S+}(t), e_{I-}(t) \geq 0$  for any  $t \geq 0$ . This proves *i*.

• Writing  $X := (e_{S+} \ e_{I-})^\top$ , notice that  $V_+(X) := u^\top X$ , for  $u := (1 \ \rho_+)$ , and  $V_+$  and  $\rho_+ > 0$  as in the statement. When  $X$  is initialized with nonnegative values, then this property is conserved (see point *i*), so  $V_+$  is positive definite and may be considered as a candidate Liapunov function.

Along the trajectories of (6), one has, using  $\delta_+$  defined in (9),

$$\begin{aligned} \dot{V}_+(X) + \delta_+ V_+(X) &= u^\top \begin{pmatrix} \delta_+ - (\mu + k_{S+}\beta_-I_-) & k_{S+}\beta_-S \\ k_{I-}\beta_+I_- & \delta_+ - (\mu + \gamma + k_{I-}\beta_+S) \end{pmatrix} X + SI u^\top \begin{pmatrix} k_{S+}(\beta - \beta_-) \\ k_{I-}(\beta_+ - \beta) \end{pmatrix} \\ &= (\delta_+ - \mu + (\rho_+ k_{I-}\beta_+ - k_{S+}\beta_-)I_- - \rho_+(\delta_+ - \mu - \gamma) - (\rho_+ k_{I-}\beta_+ - k_{S+}\beta_-)S) X \\ &\quad + SI(k_{S+}(\beta - \beta_-) + \rho_+ k_{I-}(\beta_+ - \beta)). \end{aligned} \quad (10)$$

Choosing the gain as in (8a), one has  $\delta_+ - \mu + (\rho_+ k_{I-}\beta_+ - k_{S+}\beta_-)I_- = \frac{\gamma I_-}{I_- + \frac{1}{\rho_+}} - \frac{\gamma I_-}{I_- + \frac{1}{\rho_+}} = 0$  and  $\rho_+(\delta_+ - \mu - \gamma) - (\rho_+ k_{I-}\beta_+ - k_{S+}\beta_-)S = -\frac{\gamma}{I_- + \frac{1}{\rho_+}} + \frac{\gamma S}{I_- + \frac{1}{\rho_+}} \leq 0$ .

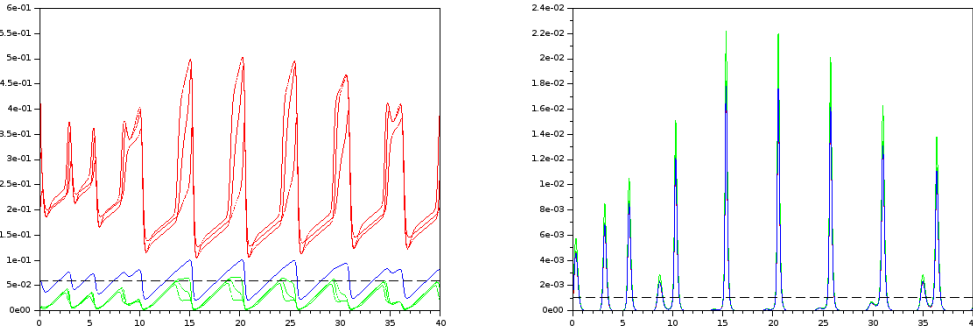
Formula (10) then yields  $\dot{V}_+(X) + \delta_+ V_+(X) \leq SI(k_{S+}(\beta - \beta_-) + \rho_+ k_{I-}(\beta_+ - \beta)) \leq \max\{k_{S+}, \rho_+ k_{I-}\} SI(\beta_+ - \beta_-)$ , which gives (9) by integration. This proves point *ii*. and achieves the proof.  $\square$

## 5 Numerical experiments

The previous system has been simulated, with  $\mu = 0.02/\text{year}, \gamma = \frac{1}{20}/\text{day} = \frac{365}{20}/\text{year}$ . The transmission rate  $\beta(t)$  has been chosen as  $\beta(t) = \beta^*(1 + \varepsilon \cos(\omega t))$ , with the nominal value  $\beta^*$  such that  $\frac{\beta^*}{\mu + \gamma} = 17$ ,  $\varepsilon = 0.4$  and  $\omega = 2.4\text{rad./year}$ , close to the pulsation of the near-equilibrium natural oscillations.  $S$  and  $I$

have been initialized at 0.06 and 0.001, close to the equilibrium in absence of perturbation ( $\varepsilon = 0$ ), and the observer initial conditions as 300% (upper estimates) and 10% (lower estimates) of the actual values. Last, the transmission rate is enclosed between  $\beta_-(t) = 0.2\beta(t)$  and  $\beta_+(t) = 5\beta(t)$ . Figure 1 shows results corresponding to  $\rho_{\pm} = 10^2, 10^3, 10^4$  and (compare with (8))

$$k_{I_{\mp}}(t) = \frac{1}{\rho_{\pm}} \frac{\beta_{\mp}(t)}{\beta_{\pm}(t)}, \quad k_{S_{\pm}}(t) = 1 + \frac{1}{\beta_{\mp}(t)} \frac{\gamma}{I_{\mp}(t) + \frac{1}{\rho_{\pm}}}.$$



**Fig. 1** Actual value (blue), upper estimates (green) and lower estimates (red) of  $S$  (left) and  $I$  (right) as functions of time (in years). The values at unperturbed equilibrium appear as dashed lines.

## References

1. Berman, A., Plemmons, R.J.: Nonnegative matrices in the mathematical sciences. *Classics in Applied Mathematics* **9** (1979)
2. Capasso, V.: *Mathematical structures of epidemic systems*, vol. 88. Springer (1993)
3. Dietz, K.: The incidence of infectious diseases under the influence of seasonal fluctuations. In: *Mathematical models in medicine*, pp. 1–15. Springer (1976)
4. Efimov, D., Raïssi, T., Chebotarev, S., Zolghadri, A.: Interval state observer for nonlinear time varying systems. *Automatica* **49**(1), 200–205 (2013)
5. Gouzé, J.L., Rapaport, A., Hadj-Sadok, M.Z.: Interval observers for uncertain biological systems. *Ecological modelling* **133**(1), 45–56 (2000)
6. Hirsch, M.W.: Stability and convergence in strongly monotone dynamical systems. *J. reine angew. Math* **383**, 1–53 (1988)
7. Horn, R.A., Johnson, C.R.: *Topics in matrix analysis*. Cambridge University Press, New York (1991)
8. Keeling, M.J., Rohani, P.: *Modeling infectious diseases in humans and animals*. Princeton University Press (2008)
9. Kuznetsov, Y.A., Piccardi, C.: Bifurcation analysis of periodic seir and sir epidemic models. *Journal of mathematical biology* **32**(2), 109–121 (1994)
10. Mason, O., Shorten, R.: Quadratic and copositive lyapunov functions and the stability of positive switched linear systems. (2007)
11. Meslem, N., Ramdani, N., Candau, Y.: Interval observers for uncertain nonlinear systems. application to bioreactors. In: Seoul, Korea. 17th IFAC World Congress, pp. 9667–9672 (2008)
12. Smith, H.L.: Monotone dynamical systems: an introduction to the theory of competitive and cooperative systems, *Mathematical surveys and monographs*, vol. 41. American Mathematical Society (1995)