



**HAL**  
open science

## Vary the s in Your s-step GMRES

David Imberti, Jocelyne Erhel

► **To cite this version:**

| David Imberti, Jocelyne Erhel. Vary the s in Your s-step GMRES. 2016. hal-01299652v1

**HAL Id: hal-01299652**

**<https://inria.hal.science/hal-01299652v1>**

Preprint submitted on 11 Apr 2016 (v1), last revised 7 Dec 2017 (v3)

**HAL** is a multi-disciplinary open access archive for the deposit and dissemination of scientific research documents, whether they are published or not. The documents may come from teaching and research institutions in France or abroad, or from public or private research centers.

L'archive ouverte pluridisciplinaire **HAL**, est destinée au dépôt et à la diffusion de documents scientifiques de niveau recherche, publiés ou non, émanant des établissements d'enseignement et de recherche français ou étrangers, des laboratoires publics ou privés.

# Vary the $s$ in Your $s$ -step GMRES

David Imberti <sup>\*</sup>, Jocelyne Erhel <sup>†</sup>

April 11, 2016

## Abstract

Krylov methods are commonly used iterative methods for solving large sparse linear systems, however they suffer communication bottlenecks on parallel computers. Therefore, Communication-Avoiding methods have been developed where the Krylov subspace is built block by block, so that  $s$  matrix-vector multiplications can be done before the orthonormalization operation.

This paper introduces a new variation on  $s$ -step GMRES in order to improve its stability and to reduce the number of iterations necessary to ensure convergence, with a small overhead in communications. Some theoretical improvements are necessary to accomplish this, and are interesting in their own right.

Namely, we develop a new block variant that allows us to express the stability difficulties in  $s$ -step GMRES more fully. Using this variant, we can create a simple adaptive  $s$ -step GMRES algorithm, where the block size is variable and increases gradually. Our numerical experiments show a good agreement with our stability analysis and demonstrate the efficiency of our original variable  $s$ -step approach.

**Key words.** Communication-Avoiding,  $s$ -step Krylov method, GMRES algorithm, variable  $s$ -step.

**AMS subject classifications.** 65F10, 65N22

## 1 Introduction

Many computational problems need to solve a large linear system  $Ax = b$ . Because such linear solvers can be quite time consuming, they require an efficient implementation for supercomputers. An important class of methods are based on Krylov subspace methods like GMRES [27]. We aim to improve the parallelization of such methods for general sparse matrices. In this paper, we design and implement a parallel version of the GMRES algorithm as an improvement over previous parallel GMRES algorithms [1, 3, 5, 8, 11, 15, 19, 22, 24, 30].

GMRES parallelization has been studied by several authors, which we differentiate in Figure 1, each branch of which describes a further subset of GMRES algorithms. In the course of this paper, we will briefly describe each branch, and the one we eventually take, by discussing each level of this tree from the root node down (a breadth-first traversal through GMRES).

Some authors use a basic GMRES iteration with an Arnoldi process, in otherwords, a very traditional restarted GMRES [2, 6, 10, 28]. Another way is to define a new Krylov basis, which necessitates a calculation of multiple matrix vector multiplications before restarting, which we denote as an  $m$ -step (where  $m$  refers to the dimension of the Krylov space) GMRES algorithm and is studied in [1, 3, 5, 8, 11, 19]. These methods likewise assume that the number of matrix vector multiplications between each orthonormalization should be equal to the restarting parameter  $m$ .

Our implementation is based on the ideas in [15], in which the number of matrix-vector multiplications  $s$  between orthonormalizations is not necessarily equal to  $m$ . Unlike [9, 15], we do not use matrix inverse

---

<sup>\*</sup>INRIA, Campus universitaire de Beaulieu, 35042 Rennes Cedex, France

<sup>†</sup>INRIA, Campus universitaire de Beaulieu, 35042 Rennes Cedex, France

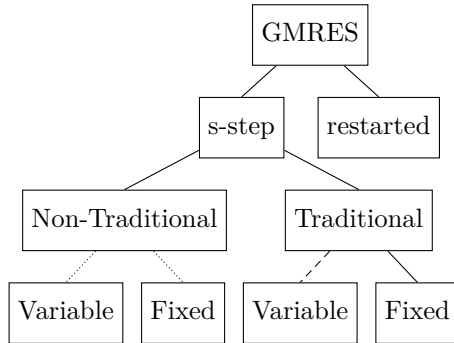


Figure 1: Variants of GMRES.

computations in order to achieve this. Therefore, we denote the approach in [15] as the 'Traditional' approach in the above Figure 1, while we propose a new 'Non-traditional' branch.

One key motivation to approach the 'Non-traditional' branch is the simplicity of the code. This simplicity permits us to easily define GMRES methods into fixed and variable methods, which we aim to define in this paper. Another key motivation is that we could not find an a posteriori advantage of the 'Traditional' branch over the 'Non-traditional' one, as we will show in the numerical experiments.

We should note, however, that because [15] describes a fixed traditional  $s$ -step GMRES method according to our terminology, there is reason to suspect that there would exist a variable traditional  $s$ -step GMRES algorithm which may be of theoretical interest. We have denoted this gap in the literature by the dashed line in Figure 1.

Although this distinction between 'Traditional' and 'Non-traditional' is important, it is not our most important point. Rather, it is our introduction of what we call a 'variable' non-traditional  $s$ -step GMRES method, which we denote by the dotted lines in Figure 1 above. While a 'fixed' method is one in which the size of  $s$  at each step does not vary, a 'variable' method is one in which the size of  $s$  does vary at each step. What we suggest in this paper, is to investigate the implementation and theoretical details that come as a result of this. In particular, the reasons for varying include numerical stability, theoretical heuristics, communication dependencies, and code simplicity. What will be discussed in this paper is how to go about letting  $s$ -step become variable, retain an expression similar to an Arnoldi equation, and still have maintainable code.

The rest of the paper is organized by devoting roughly one section to each level of the tree in Figure 1. In section 2 we give a brief background to restarted GMRES and  $m$ -step GMRES. In section 3, we define the inversion factor in  $s$ -step GMRES, use it to more precisely define the difference between traditional and non-traditional GMRES algorithms, and discuss its implications before suggesting alternatives. This allows us to generalize  $s$ -step GMRES to include a variable  $s$  as opposed to a fixed one in section 4. We then give some stability results for this variable method in section 5, and a rough bound of the communication costs in section 6. Finally, we provide numerical experiments in section 7, and conclude in section 8.

## 2 Background

### 2.1 Restarted GMRES

We first recall the GMRES algorithm to build upon and recall  $s$ -step GMRES.

Let  $Ax = b$  be a linear system, with  $A$  a large sparse nonsymmetric nonsingular matrix of size  $n$ .

We introduce the Krylov subspace  $K_m := \text{span}\{r_0, Ar_0, A^2r_0, \dots, A^{m-1}r_0\}$  with residual  $r_0 = b - Ax_0$

for some chosen initial vector  $x_0$ . It is known that performing Arnoldi on  $A$  and  $r_0$  generates an orthonormal basis,  $V_{m+1} := \{v_1, \dots, v_{m+1}\}$  of the Krylov subspace  $K_{m+1}$  and a Hessenberg matrix  $H_m$ , of size  $(m+1) \times m$ , which satisfy the Arnoldi relation

$$AV_m = V_{m+1}H_m. \tag{1}$$

The GMRES algorithm is based on the subspace condition  $x_m \in x_0 + K_m$ , which can be written  $x_m = x_0 + V_m y$ . Using the Arnoldi relation (1), we can say that  $r_m = r_0 - AV_m y = V_{m+1}(\beta e_1 - H_m y)$ , where  $\beta = \|r_0\|$  and  $e_1$  is the standard basis vector with 1 as its first element. The residual in GMRES satisfies the Galerkin condition  $\min_{x \in x_0 + K_m} \|r\|$ , which is equivalent to the linear least squares problem  $\min_y \|\beta e_1 - H_m y\|$ . Restarted GMRES(m) repeats this Arnoldi cycle for a new initial vector by setting  $x_0 = x_m$  [16, 18, 21, 26, 27]. GMRES may also be modified to allow preconditioning, but this will not affect our discussion. We will also assume throughout the paper that the Krylov subspace  $K_m$  is of dimension  $m$ , so that the residual of minimal norm is unique. In summary, and to provide a comparison to variable s-step GMRES later, restarted GMRES(m) may be expressed by Algorithm 1.

---

**Algorithm 1** GMRES(m)

---

```

1:  $r_0 = b - Ax_0$ 
2:  $\beta = \|r_0\|$ 
3:  $v_1 = r_0/\beta$ 
4:  $V_1 = \{v_1\}$ 
5: while not converged do
6:   for  $k=1, m$  do
7:      $w_k = Av_k$ 
8:      $AV_k = V_{k+1}H_k$  obtained from Arnoldi process
9:     solve the least squares problem  $\min_y \|\beta e_1 - H_k y\| = \|\beta e_1 - H_k y_k\|$ 
10:    compute  $x_k = x_0 + V_k y_k$ 
11:    test convergence
12:  end for
13:  if not converged then
14:     $x_0 = x_m$ 
15:     $r_0 = r_m$ 
16:     $\beta = \|r_0\|$ 
17:     $v_1 = r_0/\beta$ 
18:  end if
19: end while

```

---

## 2.2 m-step GMRES

The purpose of m-step GMRES is to improve the communication efficiency of Algorithm 1. We note that most of the computational time in algorithm 1 is spent inside of the Arnoldi loop. Indeed, the least squares problem in step 9 of Algorithm 1 involves the small upper-Hessenberg matrix  $H_m$ , therefore it may quickly be solved by a series of Givens rotations. The Arnoldi process contains two key kernels: matrix-vector products and orthonormalization. To motivate m-step GMRES, we look at the problems involved in parallelizing these kernels.

The Arnoldi process builds an orthonormal basis of the Krylov subspace  $K_{m+1}$  with one matvec at a time and orthonormalizes it against the previous vectors as soon as it is added. The specific method for orthonormalization may vary (Algorithm 1 shows GMRES with modified Gram-Schmidt as the orthonormalization procedure). Regardless, all such methods lead to communication issues due to the

global communication necessary in the dot product operation. Some authors have considered a classical Gram-Schmidt to reduce communication, but then this procedure must be performed twice to ensure numerical stability[12]. Still different is to use Householder transformations, but this is more computationally intensive [31]. Parallelism can be added by using a block Householder or QR method instead [17]. By this method, a set of vectors is built before orthonormalizing, so that many tasks have been made independent from each other. The first step becomes merely a succession of  $m$  matrix-vector products (thus the name  $m$ -step GMRES) and the second step a block orthonormalization process. Moreover, a Newton basis deals with stability issues [1, 11, 24, 30] and other basis can also be considered [23].

For sake of simplicity, we do not consider here such basis, and leave this for future work. To detail the  $m$ -step GMRES procedure further we introduce  $v_1 = r_0/\beta$  and

$$W_{m+1} = \{v_1, Av_1, \dots, A^m v_1\}, \quad (2)$$

which is a basis of the Krylov subspace  $K_{m+1}$ . We compute an orthonormal basis with a QR factorization:

$$W_{m+1} = V_{m+1}R_{m+1}. \quad (3)$$

The diagonal elements of the upper triangular matrix  $R_{m+1}$  are forced to be real positive, so that the QR factorization is unique[13].

Using this, we may further define

$$\begin{aligned} \{v_1, AW_m\} &= W_{m+1}, \\ &= V_{m+1}R_{m+1}, \\ &:= V_{m+1}\{e_1, H_N\}, \end{aligned} \quad (4)$$

where  $H_N$  is an upper Hessenberg matrix formed by removing the first column  $e_1$  of  $R_{m+1}$ . By removing the first column explicitly, we see that

$$AW_m = V_{m+1}H_N, \quad (5)$$

and that

$$AV_m = V_{m+1}(H_N R_m^{-1}). \quad (6)$$

Thus the subspace condition of GMRES can be written as before as  $x_m = x_0 + V_m y_T$  and the Galerkin condition ends up with the least squares problem

$$\min_y \|\beta e_1 - H_T y\|, \quad (7)$$

where  $H_T = H_N R_m^{-1}$ .

If the Krylov subspace  $K_{m+1}$  is of dimension  $m + 1$ , then the residual  $r_m$  is uniquely defined by the Galerkin condition, and we can conclude that  $m$ -step GMRES and GMRES(m) are mathematically equivalent.

We summarize these steps into  $m$ -step GMRES(m) in Algorithm 2.

---

**Algorithm 2** m-step GMRES(m)

---

```
1:  $r_0 = b - Ax_0$ 
2:  $\beta = \|r_0\|$ 
3:  $v_1 = r_0/\beta$ 
4: while not converged do
5:    $W_{m+1} = \{v_1, Av_1, \dots, A^{m-1}v_1, A^m v_1\}$ 
6:   QR factorization  $W_{m+1} = V_{m+1}R_{m+1}$ 
7:    $H_T = H_N R_m^{-1}$  where  $H_N$  is  $R_{m+1}$  removing the first column.
8:   solve the least squares problem  $\min_y \|\beta e_1 - H_T y\| = \|\beta e_1 - H_T y_T\|$ 
9:   compute  $x_m = x_0 + V_m y_T$ 
10:  test convergence
11:  if not converged then
12:     $x_0 = x_m$ 
13:     $r_0 = r_m$ 
14:     $\beta = \|r_0\|$ 
15:     $v_1 = r_0/\beta$ 
16:  end if
17: end while
```

---

In practice, Algorithm 2 may overwrite  $W$  with  $V$  in order to save memory. Nevertheless, m-step GMRES(m) contains three main steps: the matrix-vector products in the computation of  $W$ , its QR factorization, and the multiplication of  $H_N$  by the  $R_m^{-1}$  factor. We now turn to consider this  $R_m^{-1}$  step, its necessity, and its influence on stability.

### 3 Non-traditional m-step GMRES

We concern ourselves here with the  $R_m^{-1}$  factor, and we design a new version of m-step GMRES(m) method without this factor. We denote as 'Traditional' Algorithm 2 that uses this  $R_m^{-1}$  factor, and we propose a 'Non-traditional' algorithm without  $R_m^{-1}$ .

#### 3.1 Non-Traditional approach

Since  $W_m$  is a basis of the Krylov subspace  $K_m$ , the subspace condition can be equivalently written  $x_m = x_0 + W_m y$  or, using the QR factorization  $W_m = V_m R_m$ ,

$$x_m = x_0 + V_m R_m y. \quad (8)$$

If we use the relation (5), the Galerkin condition is equivalent to solving the least squares problem

$$\min_y \|\beta e_1 - H_N y\|. \quad (9)$$

Again, this algorithm is mathematically equivalent to GMRES(m), since it satisfies the subspace and Galerkin conditions. Here too, this approach may overwrite  $W$  with  $V$  in order to save memory. We summarize this new version of  $m$ -step GMRES(m) in Algorithm 3.

---

**Algorithm 3** Nontraditional m-step GMRES(m)

---

```
1:  $r_0 = b - Ax_0$ 
2:  $\beta = \|r_0\|$ 
3:  $v_1 = r_0/\beta$ 
4: while not converged do
5:    $W_{m+1} = \{v_1, Av_1, \dots, A^{m-1}v_1, A^m v_1\}$ 
6:    $QR$  factorization  $W_{m+1} = V_{m+1}R_{m+1}$ 
7:    $H_N = R_{m+1}$  without the first column.
8:   solve the least squares problem  $\min_y \|\beta e_1 - H_N y\| = \|\beta e_1 - H_N y_N\|$ 
9:   compute  $x_m = x_0 + V_m R_m y_N$ 
10:  test convergence
11:  if not converged then
12:     $x_0 = x_m$ 
13:     $r_0 = r_m$ 
14:     $\beta = \|r_0\|$ 
15:     $v_1 = r_0/\beta$ 
16:  end if
17: end while
```

---

### 3.2 Comparison of the two m-step GMRES algorithms

We now compare our non-traditional approach to the traditional one. In order to simplify our analysis, we focus on steps 8 and 9 of both algorithms.

Algorithm 2 creates the solution in the following way:

$$\text{solve } \min_y \|\beta e_1 - H_N R_m^{-1} y\|, x_m = x_0 + V_m y_T, \quad (10)$$

while Algorithm 3 performs the following:

$$\text{solve } \min_y \|\beta e_1 - H_N y\|, x_m = x_0 + V_m R_m y_N. \quad (11)$$

Then, in exact arithmetic,  $y_T = R_m y_N$  (recall that  $R_m$  is uniquely defined) and the approximate solutions are the same in exact arithmetic.

What matters now is the numerical stability of the two algorithms. On the one hand, there is an inversion step in equation (10), and on the other hand there is a multiplication step in equation (11) (assuming that one uses an orthonormalization technique that is careful to preserve orthonormality[14]). This means that where the instabilities in the algorithm occur simply swap places from the inversion of  $R_m$  to the matrix multiplication by  $R_m$ . Therefore, we argue that it is not possible *a priori* to conclude whether one method is more stable than the other.

Therefore, the choice between the two algorithms can then be based on the ease of implementation. It will be more apparent as we generalize to a s-step GMRES formulation below, that our non traditional approach is easier to implement. Indeed, we will not need to discuss the details of calculating and determining the  $R_m^{-1}$  blocks and the index challenges that occur as a result of that.

We now turn to such a s-step method, using both basis  $W$  and  $V$  in our non-traditional way.

### 3.3 Fixed s-step GMRES

In the m-step GMRES method, the size of the Krylov basis  $W_m$  is equal to the restarting parameter  $m$ . However, the condition number of  $W_m$  and thus of  $H_m$  increases with  $m$ , limiting the restarting parameter to small values. But convergence could stall if the restarting parameter is too small [22].

Therefore, another approach can be taken where the Krylov orthonormal basis  $V_{m+1}$  is built by successively computing blocks  $B_j$  of size  $s \leq m$  [15]. Each restarting cycle will then be composed of several steps  $j$  where a block  $B_j$  is added to the basis  $W$  and  $AB_j$  is orthonormalized. This should allow taking  $s$  sufficiently small for stability issues and  $m$  sufficiently large for convergence issues. If  $s$  is large enough, parallelism can occur by decoupling matrix-vector multiplications from orthonormalization. For sake of simplicity, we assume that  $m$  is a multiple of  $s$  so that  $m = sJ$ . We use the non-traditional way as described above, as opposed to the traditional approach characterized by [15]. We compute the first block  $B_1 = W_s$  as in equation (2) with the size  $s$  instead of  $m$ :

$$W_s = \{v_1, Av_1, \dots, A^{s-1}v_1\}, \quad (12)$$

and we perform a QR factorization as in equation (4):

$$\{v_1, AW_s\} = V_{s+1}R_{s+1}. \quad (13)$$

The last vector  $v_{s+1}$  of the orthonormal system  $V_{s+1}$  will serve as the initial vector of the next block  $B_2$ . We may inductively give a more general definition of  $W$ , the orthonormal system  $V$ , and the triangular matrix  $R$ . At step  $j$ , with  $2 \leq j \leq J$ , we assume that we have built  $W_{s(j-1)}$  and  $V_{s(j-1)+1}$ , with the last vector  $v_{s(j-1)+1}$ . We define the block  $B_j$  of size  $s$  by

$$B_j := \{v_{s(j-1)+1}, Av_{s(j-1)+1}, \dots, A^{s-1}v_{s(j-1)+1}\}, \quad (14)$$

and describe a recursive relation for  $W_{sj}$ :

$$W_{sj} := \{W_{s(j-1)}, B_j\}. \quad (15)$$

We now perform a QR factorization

$$\{v_1, AW_{sj}\} = V_{sj+1}R_{sj+1}, \quad (16)$$

and we define the upper Hessenberg matrix  $H_{sj}$  as  $R_{sj+1}$  minus the first column  $e_1$  so that

$$AW_{sj} = V_{sj+1}H_{sj}. \quad (17)$$

In summary, we note that

$$\begin{aligned} W_{sj} &= \{B_1, B_2, \dots, B_j\}, \\ &= \{v_1, Av_1, \dots, A^{s-1}v_1, v_{s+1}, \dots, A^{s-1}v_{s+1}, \dots, v_{s(j-1)+1}, \dots, A^{s-1}v_{s(j-1)+1}\}. \end{aligned} \quad (18)$$

Before deriving the  $s$ -step method, we prove that the systems  $W_{sj}$  and  $V_{sj}$  span the Krylov subspace  $K_{sj}$ .

**Theorem 1.** *We assume that the dimension of  $K_{m+1}$  is equal to  $m + 1$ . Let  $W_{sj}$  defined by (15) and  $V_{sj+1}$  defined by (16). Then  $W_{sj}$  is a basis of  $K_{sj}$  and  $V_{sj+1}$  is a basis of  $K_{sj+1}$ .*

*Proof.* The proof is by induction.

For  $j = 1$ , since  $W_s = \{v_1, \dots, A^{s-1}v_1\}$ , it is clear that  $W_s$  is a basis of  $K_s$ . Also  $\{v_1, AW_s\}$  is a basis of  $K_{s+1}$  and by (13),  $V_{s+1}$  is an orthonormal basis of  $K_{s+1}$ .

Now, we assume that  $W_{s(j-1)}$  is a basis of  $K_{s(j-1)}$  and that  $V_{s(j-1)+1}$  is a basis of  $K_{s(j-1)+1}$ .

Thus  $u = v_{s(j-1)+1} \in K_{s(j-1)+1} \setminus K_{s(j-1)}$  and by construction  $B_j \in K_{sj}$ . Thanks to relation (15) and to the induction assumption, we conclude that  $W_{sj} \in K_{sj}$ .

Moreover,  $u \notin K_{s(j-1)}$  thus the block  $B_j$  is linearly independent from the system  $W_{s(j-1)}$  and  $W_{sj}$  is a basis of  $K_{sj}$  which is of dimension  $sj$ . Also  $Aw_{sj} \in K_{sj+1}$  but  $Aw_{sj} \notin K_{sj}$  thus  $\{v_1, AW_{sj}\}$  is a basis of  $K_{sj+1}$  and by (16),  $V_{sj+1}$  is an orthonormal basis of  $K_{sj+1}$ . This completes the inductive step.  $\square$



Therefore, the subspace condition at each step  $j$  can be written for the Krylov subspace  $K_{sj}$  as

$$x = x_0 + W_{sj}y. \quad (19)$$

Now, with the Hessenberg matrix  $H_{sj}$  from equation (16), the Galerkin condition is again a least square problem

$$\min_y \|\beta e_1 - H_{sj}y\|. \quad (20)$$

Now, we show how to compute at each step  $j$  the new block of  $s$  vectors in the orthonormal basis  $V_{sj+1}$  and the last  $s$  columns of the triangular matrix  $R_{sj+1}$ .

We write the QR factorization by blocks as follows:

$$\{v_1, AW_{sj}\} = V_{sj+1}R_{sj+1} = \{v_1, AW_{s(j-1)}, AB_j\}. \quad (21)$$

Since  $\{v_1, AW_{s(j-1)}\} = V_{s(j-1)+1}R_{s(j-1)+1}$  from the previous step, we get

$$AB_j = V_{sj+1}S_j, \quad (22)$$

where the matrix  $S_j$  of size  $(sj+1) \times s$  contains the last  $s$  columns of  $R_{sj+1}$ .

Therefore, at step  $j$ , we orthonormalize  $AB_j$  against  $V_{s(j-1)+1}$  to get the last  $s$  vectors of  $V_{sj+1}$  and the last  $s$  columns of  $R_{sj+1}$ .

We summarize this fixed  $s$ -step GMRES, which we call SGMRES(m,s), in Algorithm 4.

---

**Algorithm 4** Non-Traditional Fixed  $s$ -step SGMRES(m,s)

---

```

1:  $r_0 = b - Ax_0$ 
2:  $\beta = \|r_0\|$ 
3:  $v_1 = r_0/\beta$ 
4: while not converged do
5:    $W_0 = \emptyset$  and  $V_1 = \{v_1\}$ 
6:    $J = m/s$ 
7:   for  $j = 1, J$  do
8:      $B_j = \{v_{s(j-1)+1}, Av_{s(j-1)+1}, \dots, A^{s-1}v_{s(j-1)+1}\}$ 
9:      $W_{sj} = \{W_{s(j-1)}, B_j\}$ 
10:    orthonormalize  $AB_j$  against  $V_{s(j-1)+1}$  to obtain the last  $s$  vectors  $\{v_{s(j-1)+2}, \dots, v_{sj+1}\}$  and the
    last  $s$  columns of  $R_{sj+1}$ 
11:    solve the least squares problem  $\min_y \|\beta e_1 - H_{sj}y\| = \|\beta e_1 - H_{sj}y_F\|$ 
12:    compute  $x_{sj} = x_0 + W_{sj}y_F$ 
13:    test convergence
14:  end for
15:  if not converged then
16:     $x_0 = x_{sj}$ 
17:     $r_0 = r_{sj}$ 
18:     $\beta = \|r_0\|$ 
19:     $v_1 = r_0/\beta$ 
20:  end if
21: end while

```

---

In Algorithm 4, the basis  $W_{sj}$  is stored for sake of clarity. However, it is possible to store only  $V_{sj+1}$  and  $R_{sj+1}$  since it is easy to compute  $W_{sj}$  from these matrices. Indeed, thanks to (22), we may write

$$B_j = V_{sj+1}\{e_{s(j-1)+1}, C_j\}, \quad (23)$$

where  $e_{s(j-1)+1}$  is the vector defined by  $v_{s(j-1)+1} = V_{sj+1}e_{s(j-1)+1}$  and  $C_j$  is the matrix of the first  $s-1$  columns of  $S_j$ .

Then, by induction, it is easy to get a relation between  $W_{sj}$  and  $V_{sj+1}$ .

One should note that if  $s=1$ , one obtains classical GMRES (Algorithm 1), and if  $s=m$ , one will obtain  $m$ -step GMRES, or Algorithm 3. Thus, Algorithm 4 represents a generalization of GMRES algorithms. It is noteworthy to recall that a traditional fixed  $s$ -step approach is possible [15], but requires intensive care in the appropriate block indices in order to generate and treat the  $R^{-1}$  factors.

### 3.4 Variable s-step GMRES

The fixed  $s$ -step GMRES method improves the condition number of the basis  $W$  compared with  $m$ -step GMRES, at the price of less parallelism. Nevertheless, if  $s$  is chosen too large, convergence may stagnate because of stability issues, as illustrated in the numerical experiments of section 6.

j	1	2	3	4	...
$s_j$	s	s	s	s	...
$l_j$	s	2s	3s	4s	...

Table 1: Fixed  $s$ -step sequence

j	1	2	3	4	5	6 ...
$s_j$	1	2	3	5	8	13 ...
$l_j$	1	3	6	11	19	32 ...

Table 2: Fibonacci sequence of block size  $s_j$ .

To help balance these two concerns, we propose a new adaptive method, where the block size  $s$  is not fixed, but variable. Indeed, our numerical experiments of section 6 and theoretical results of section 4 suggest that taking a small block size in the first steps could improve the stability and convergence of the algorithm. The first steps would then go slower by performing fewer matrix-vector multiplications with less parallelism. The block size would increase quite fast up to a given size  $s$ , achieving the same parallelism as the fixed  $s$ -step method. Thanks to a faster convergence, the overall performance would be better.

In our variable approach, at each step  $j$ , we define a new block size  $s_j$ , and build a system  $W_{l_j}$  of size  $l_j$ , where  $l_1 = s_1$  (we set  $l_0 = 0$  as convention) and  $l_j = l_{j-1} + s_j$ ,  $j \geq 2$ . We assume that  $m = l_J$  for some integer  $J$ .

In the fixed  $s$ -step method SGMRES( $s,m$ ), we simply have  $s_j = s$  and  $l_j = sj$ , as detailed in Table 1. We suggest to use the Fibonacci sequence to help define the block sizes  $s_j$ , as detailed in Table 2.

Because we do take a non-traditional approach, we may easily describe this variable approach. As such, all we need to do is to replace  $sj$  with  $l_j$  appropriately above in Algorithm 4 in order to properly describe a variable  $s$ -step method. We detail this more formally below.

As before, we define the first block  $B_1 = W_{l_1}$  by

$$W_{l_1} = \{v_1, Av_1, \dots, A^{s_1-1}v_1\}, \quad (24)$$

and we perform a QR factorization

$$\{v_1, AW_{l_1}\} = V_{l_1+1}R_{l_1+1}. \quad (25)$$

As before, we give a recursive definition of  $W$ , the orthonormal system  $V$  and the triangular matrix  $R$ .

At step  $j$ , with  $2 \leq j \leq J$ , we assume the existence of  $W_{l_{j-1}}, V_{l_{j-1}+1}$  and we define the block  $B_j$  corresponding to a set of  $s_j$  multiplications performed between orthonormalizations.

We define the block  $B_j$  of size  $s_j$  by

$$B_j := \{u, Au, \dots, A^{s_j-1}u\}, \quad (26)$$

where  $u = v_{l_{j-1}+1}$  the last vector of the orthonormal system  $V_{l_{j-1}+1}$ . We get a recursive relation for  $W_{l_j}$ :

$$W_{l_j} := \{W_{l_{j-1}}, B_j\}, \quad (27)$$

and perform a QR factorization

$$\{v_1, AW_{l_j}\} = V_{l_j+1}R_{l_j+1}. \quad (28)$$

Introducing the upper Hessenberg matrix  $H_{l_j}$  as  $R_{l_j+1}$  minus the first column  $e_1$ , we get

$$AW_{l_j} = V_{l_j+1}H_{l_j}. \quad (29)$$

In summary, we note that

$$\begin{aligned} W_{l_j} &= \{B_1, B_2, \dots, B_j\}, \\ &= \{v_1, Av_1, \dots, A^{s_1-1}v_1, v_{l_1+1}, \dots, A^{s_2-1}v_{l_1+1}, \dots, v_{l_{j-1}+1}, \dots, A^{s_j-1}v_{l_{j-1}+1}\}. \end{aligned} \quad (30)$$

We can reiterate the proof for the fixed s-step method to give the following theorem very similar to Theorem 1.

**Theorem 2.** *We assume that the dimension of  $K_{m+1}$  is equal to  $m+1$ . Let  $W_{l_j}$  defined by (27) and  $V_{l_j+1}$  defined by (28). Then  $W_{l_j}$  is a basis of  $K_{l_j}$  and  $V_{l_j+1}$  is a basis of  $K_{l_j+1}$ .*

Therefore, the subspace condition at each step  $j$  can be written for the Krylov subspace  $K_{l_j}$  as

$$x = x_0 + W_{l_j}y, \quad (31)$$

and the Galerkin condition is again a least square problem

$$\min_y \|\beta e_1 - H_{l_j}y\|. \quad (32)$$

We summarize this variable s-step GMRES, which we call VGMRES(m,s), in Algorithm 5.

---

**Algorithm 5** Non-Traditional Variable s-step VGMRES(m,s)
 

---

```

1:  $r_0 = b - Ax_0$ 
2:  $\beta = \|r_0\|$ 
3:  $v_1 = r_0/\beta$ 
4: while not converged do
5:    $W_0 = \emptyset$  and  $V_1 = \{v_1\}$ 
6:   for  $j = 1, J$  do
7:      $B_j = \{v_{l_{j-1}+1}, Av_{l_{j-1}+1}, \dots, A^{s_j-1}v_{l_{j-1}+1}\}$ 
8:      $W_{l_j} = \{W_{l_{j-1}}, B_j\}$ 
9:     orthonormalize  $AB_j$  against  $V_{l_{j-1}+1}$  to obtain  $\{v_{l_{j-1}+2}, \dots, v_{l_j+1}\}$  and the last columns of  $H_{l_j}$ 
10:    solve the least squares problem  $\min_y \|\beta e_1 - H_{l_j} y\| = \|\beta e_1 - H_{l_j} y_V\|$ 
11:    compute  $x_{l_j} = x_0 + W_{l_j} y_V$ 
12:    test convergence
13:   end for
14:   if not converged then
15:      $x_0 = x_m$ 
16:      $r_0 = r_m$ 
17:      $\beta = \|r_0\|$ 
18:      $v_1 = r_0/\beta$ 
19:   end if
20: end while

```

---

Algorithm 5 is thus a generalization of Algorithm 4, with a fixed sequence  $s_j = s$ .

The actual conditions behind where to choose the block size  $s$  or the sequence  $s_j$  is a complex dynamical problem, which is dependent in a very complicated manner on the spectra of the matrix  $A$ . As such, we only provide in the next section a few theorems to back up our claim that in general the first few steps should be small and then quickly grow.

## 4 Stability analysis

In both Algorithms 4 and 5, stability issues are directly related to the condition number  $\kappa_2(H)$  to solve the least squares problem, and to the condition number  $\kappa_2(W)$  to compute the approximate solution [14]. Since  $AW = VH$ , we get  $\kappa_2(H) = \kappa_2(AW)$ .

We start by obtaining a lower bound for the condition number of a matrix similar to  $W$  or  $AW$ . The general idea behind the following theorem should be compared to the power method [13]. For some integer  $k$  very large, the two vectors  $A^k u$  and  $A^{k-1} u$  should be nearly in the direction of the dominant eigenvector of  $A$ . Because of this, isolating the influence of these two vectors shows the powerful effect they have on the condition.

**Theorem 3.** *Let  $\lambda_i$  be the eigenvalues of a nondegenerate nonsingular matrix  $A$ , such that  $|\lambda_1| \geq |\lambda_2| \geq \dots \geq |\lambda_n| > 0$ .*

*Let*

$$D := \{D_1, A^{k-1}u, A^k u\} \quad (33)$$

*for some integer  $k$ , vector block  $D_1$  and vector  $u$ .*

*Then there exists a constant  $c$  which depends on the vector  $u$  such that*

$$\kappa_2(D) \geq c \left| \frac{\lambda_1}{\lambda_2} \right|^{k-1}$$

*Proof.* Note that

$$(\kappa_2(D))^{-1} = \min_{D+E} \text{ is singular } \frac{\|E\|}{\|D\|} \quad (34)$$

Let

$$E := \{0, 0, \lambda_1 A^{k-1}u - A^k u\}, \quad (35)$$

then  $D + E$  is singular, so that

$$\kappa_2(D) \geq \frac{\|D\|}{\|E\|}.$$

First, we note that  $\|D\| \geq \|A^k u\|$ .

We consider the complex Schur factorization  $A = QTQ^*$  with  $Q$  unitary and  $T$  upper triangular with the eigenvalues of  $A$  on the diagonal. We assume that the eigenvalues are ordered such that  $\lambda_1$  is the last entry in the diagonal of  $T$ .

Let  $u = Q\delta$  so that  $Q^*u = \delta$  and  $Au = QT\delta$ . Then  $A^k u = QT^k\delta$  and  $\|A^k u\| = \|T^k\delta\|$ . Since  $T$  is upper triangular with  $\lambda_1$  in the bottom-right corner, we get  $\|T^k\delta\| \geq |\lambda_1\delta_n|$ , thus

$$\|D\| \geq |\lambda_1\delta_n|.$$

Second,  $\|E\| = \|\lambda_1 A^{k-1}u - A^k u\| = \|\lambda_1 T^{k-1}\delta - T^k\delta\|$ .

Let  $X$  the eigenvectors of  $T$  and  $\delta = X\alpha$ , such that

$$\lambda_1 T^{k-1}\delta - T^k\delta = \sum_{i=2}^n (\lambda_1 - \lambda_i)\lambda_i^{k-1}\alpha_i x_i.$$

Therefore

$$\|E\| \leq 2|\lambda_1||\lambda_2|^{k-1} \sum_{i=2}^n |\alpha_i| \|x_i\|.$$

Finally

$$\kappa_2(D) \geq c \left| \frac{\lambda_1}{\lambda_2} \right|^{k-1}.$$

□

We may apply this theorem to obtain the following corollary to bound the condition numbers of  $W$  and  $H$ .

**Corollary 3.1.** *Let  $\lambda_i$  be the eigenvalues of a nondegenerate, nonsingular matrix  $A$ , ordered by decreasing modulus.*

*Let  $W_{l_j}$  the Krylov basis defined by a variable  $s$ -step method, with a sequence  $s_j$  of block sizes.*

*Then there exist constants  $c$  and  $c_1$  such that*

$$\kappa_2(W_{l_j}) \geq c \left| \frac{\lambda_1}{\lambda_2} \right|^{s_j-2}, \quad \kappa_2(H) \geq c_1 \left| \frac{\lambda_1}{\lambda_2} \right|^{s_j-1}.$$

*Proof.* Since  $W_{l_j} = \{W_{l_{j-1}}, B_j\}$ , and  $B_j = \{u, Au, \dots, A^{s_j-1}u\}$ , we can apply Theorem 3, with  $k = s_j - 1$ .

Similarly, we can apply Theorem 3 to  $AW_{l_j}$  with  $k = s_j$  and use the equality  $\kappa_2(H) = \kappa_2(AW)$ .

□

These results show that with a fixed s-step method,  $\kappa_2(H)$  is larger than  $\left|\frac{\lambda_1}{\lambda_2}\right|^{s-1}$  right after the first step, and we assume that it is of the same order in the successive steps.

For a variable s-step method with a decreasing sequence  $s_j$  starting at  $s_1 = s$ , the conclusion is the same. On the other hand, for a variable s-step method with an increasing sequence  $s_j$ , we assume that  $\kappa_2(H)$  is small in the first steps and that it increases gradually. Therefore we expect better approximations in the first steps and faster convergence.

We propose to use a Fibonacci sequence as defined by Table 2, but capped at some maximal value  $s$ . We expect to get an increasing condition number, up to the order  $\left|\frac{\lambda_1}{\lambda_2}\right|^{s-1}$  and to improve convergence, compared to a fixed s-step method.

This choice of a Fibonacci sequence is motivated by parallel issues and communication costs. Since the sequence increases rapidly, only a few steps are necessary to achieve the chosen value  $s$ . Then the algorithm is similar to the fixed s-step method, with the same parallel performances.

## 5 Communication Analysis

One last question remains. While we have shown the stability advantages of Algorithm 5, we have yet to show directly that its parallel costs are not prohibitive.

The two main operations in a fixed or variable s-step method are the sequence of matrix-vector multiplications to compute the block  $B_j$ , and the orthonormalization of  $AB_j$  to compute the new basis vectors of  $V$  and the new columns of  $H$ .

The first operations can be done efficiently in parallel by using parallelism in each matrix-vector multiplication [22] or a power-matrix kernel [20], whereas the second operation can be parallelized by using various parallel algorithms [29] such as RODDEC [22] or CA-QR [9].

These communication-avoiding operations manage to run step  $j$  in parallel with a low communication overhead. We assume here that each step  $j$  requires a fixed number of messages, independent of  $s_j$ , so that the total number of messages is proportional to the total number of steps, which is  $m/s$  in a fixed s-step method and some  $J$  in a variable s-step method.

j	1	2	3	4	$J_1$	$J_1 + 1$	...	$J_1 + J_2 = J$
$s_j$	1	2	3	5	$\leq s$	s	...	s
$l_j$	1	3	6	11	$l_{J_1}$	$l_{J_1} + s$	...	m

Table 3: Capped Fibonacci s-step sequence.

Let us consider the algorithm FibGMRES(m,s), where the sequence of block sizes  $s_j$  is given by Fibonacci numbers until the block size is capped at  $s$ , as shown in Table 3, and let us compare it to Algorithm SGMRES(m,s), where the block size  $s$  is fixed. To this end, we compare  $m/s$  with  $J$ :

**Theorem 4.** *Let  $J$  be the total number of steps in FibGMRES(m,s) and  $m/s$  the total number of steps in SGMRES(m,s). Then, if  $s$  is small compared to  $m$ ,  $J$  is of the same order as  $m/s$ .*

*Proof.* Let  $J_1$  be the step where the Fibonacci sequence is capped, and  $J_2$  the number of remaining steps after this cap, so that  $J = J_1 + J_2$ .

Also,  $m = l_{J_1} + sJ_2$  so that  $J = m/s + J_1 - l_{J_1}/s$ .

Assuming that we start here with  $s_1 = 1, s_2 = 2$  as in Table 3, the block size  $s_j$  is the  $(j + 1)$ th Fibonacci number. Using the properties of the Fibonacci sequence[25], we get  $l_{J_1} = s_{J_1+2} - 2$ , thus

$$J = m/s + J_1 - (s_{J_1+2} - 2)/s.$$

We want now to bound  $J_1$  and to show that it is small compared to  $m/s$ .

Let  $\phi = \frac{1+\sqrt{5}}{2}$ , then  $s_j = \frac{\phi^{j+1} - \phi^{-(j+1)}}{\sqrt{5}}$  for  $j \leq J_1$ .

Using that  $s_{J_1} \leq s$ , we get

$$\begin{aligned} \phi^{J_1+1} &= \sqrt{5}(s_{J_1} + \phi^{-(J_1+1)}) \\ &\leq \sqrt{5}(s+1) \\ J_1 &\leq \log_{\phi}(\sqrt{5}(s+1)) - 1 \\ J_1 &= O(\log_{\phi}(s)) \end{aligned} \tag{36}$$

Thus  $J = O(m/s + \log_{\phi}(s)) = O(m/s)$ . □

Therefore, the communication cost is at least of the same order regardless of using fixed  $s$ -step or Fibonacci GMRES due to the rapid growth of the  $s_j$  block size in FibGMRES. It should also be noted here the important payoff between this section and the previous. If  $s$  is kept too small, then this increases  $m/s$ , which as we discussed in the previous proof, is proportional to the number of messages passed; therefore, decreasing  $s$  also decreases the level of parallelism in the algorithm, and vice versa. However, in the previous section we showed that  $s$  being too large introduces stability problems. This implies that there is a balance that must be struck between stability and communication. We now show some numerical experiments confirming this interplay, as well as the convergence properties of Fibonacci GMRES.

## 6 Numerical Results

In this section we concentrate on demonstrating three central results that follow chronologically with what we presented above.

The first regards the performance of traditional and non-traditional Algorithms 2 and 3 respectively. Namely, in our tests, the differences in performance of these two methods is marginal, so that the simplicity of implementation of Algorithm 3 may be preferable in some situations compared to Algorithm 2.

The second part will analyze the impact of the block size  $s$  on convergence rate in the fixed  $s$ -step method. We show that the condition number of  $AW$  increases with  $s$  and affects convergence as predicted by section 4.

After this we will focus on the heart of this paper, which is the performance of variable  $s$ -step GMRES methods, in particular the Fibonacci  $s$ -step FibGMRES( $m,s$ ) method, where the variable block size  $s_j$  follows a Fibonacci pattern. We compare the variable FibGMRES method to the fixed  $s$ -step SGMRES method, by looking at the convergence rate and at the condition number  $\kappa_2(AW)$ . Our tests demonstrate the behavior we analyzed in Corollary 3.1.

All experiments were performed on a computer with a  $x86$  architecture. In all our tests, we choose all elements of the initial guess  $x_0$  uniform random between 0 and 1. The relative residual at iteration  $k$  is defined by  $\|r_k\|/\|r_0\|$ .

### 6.1 $m$ -step GMRES( $m$ )

The first question we have to answer is whether the use of  $V$  or  $W$  as a Krylov basis impacts the stability and convergence of  $s$ -step methods. To help answer this question, we rely on a series of tests, done with trials of sparse matrices of type  $A + 2I$ , where the matrix  $A$  is random and  $I$  is the identity matrix.

These matrices are of size  $n = 1000$  with 10000 nonzeros. They are scaled and preconditioned by Jacobi. We compare the two versions of  $m$ -step GMRES( $m$ ), with a block size equal to the restarting parameter, where the basis is either  $V$  or  $W$ . In Figure 2, we plot the mean absolute error  $\|x_m - A^{-1}b\|$  after each restarting cycle, for three values of  $m$ . The errors of the two versions, using either  $V$  or  $W$ , are very similar. This demonstrates our earlier remark that where the instabilities in the algorithm occur simply swap places from the inversion of  $R_m$  to the matrix multiplication by  $W_m$ .

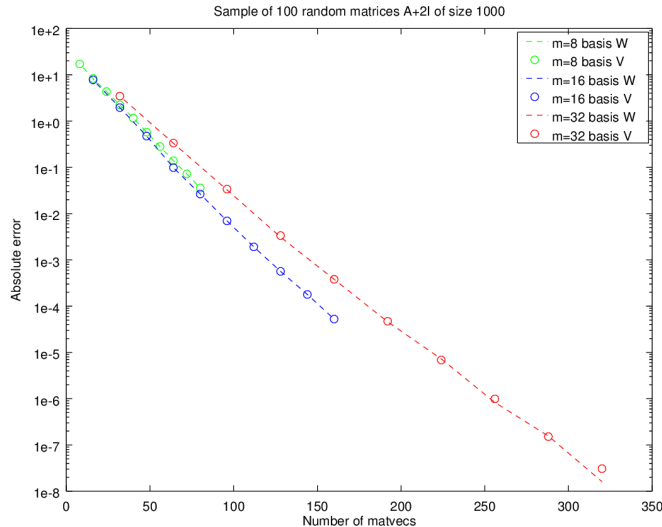


Figure 2: Mean absolute error for a sample of random matrices, using either  $V$  or  $W$  as a basis in the subspace condition.

Therefore, we conclude that the difference in performance of these two methods is marginal, and that the simplicity of implementation of Algorithm 3 may be preferable in some situations compared to Algorithm 2.

It should be noted that with the addition of better preconditioners or with a well-conditioned matrix, all that would change is that the tests could be reasonably performed for larger values of the restarting parameter  $m$ . A similar situation would occur with the addition of a Newton basis, which would in theory improve the condition numbers of  $W_m$  and  $R_m$ .

With classical restarted GMRES( $m$ ), convergence usually gets faster or at least not slower by increasing the restarting parameter  $m$  [27]. As we can see in Figure 2,  $m = s = 16$  does marginally better than  $m = s = 8$ , but by the time  $m = s = 32$ , the stability issues inherent in GMRES( $m$ ) start to crop up. Thus, on one hand, a large value of  $m$  is sometimes necessary to ensure convergence of restarted GMRES and on the other hand a small value of  $m$  is required to ensure a well-conditioned Krylov basis. In [22] for example, deflation is used to improve stability, whereas in [15] for example, the block size  $s$  is chosen smaller than  $m$ .

## 6.2 Fixed s-step SGMRES( $m,s$ )

From now on, we use the basis  $W$  in all our experiments. Here, we analyze the convergence and the numerical stability of the fixed s-step method, with  $s$  smaller than  $m$ , denoted by SGMRES( $m,s$ ).

We use the matrix fv2 from Tim Davis matrix collection, which is of size  $n = 9801$  with  $nz = 87025$  nonzero elements [7]. This matrix is well-conditioned and restarted GMRES( $m$ ) converges quickly, without preconditioning and with a relatively small value of  $m$ .

We first analyze the impact of the block size  $s$  on stability and convergence, for a given restarting parameter  $m = 48$ . Figures 3 and 4 represent respectively the relative residual and the condition number of  $AW$ .

The primary feature to notice in Figures 3 is the bounding behavior by standard GMRES( $m$ ) and  $m$ -step GMRES( $m$ ), which correspond respectively to the bounding values  $s = 1$  and  $s = m$  of the block



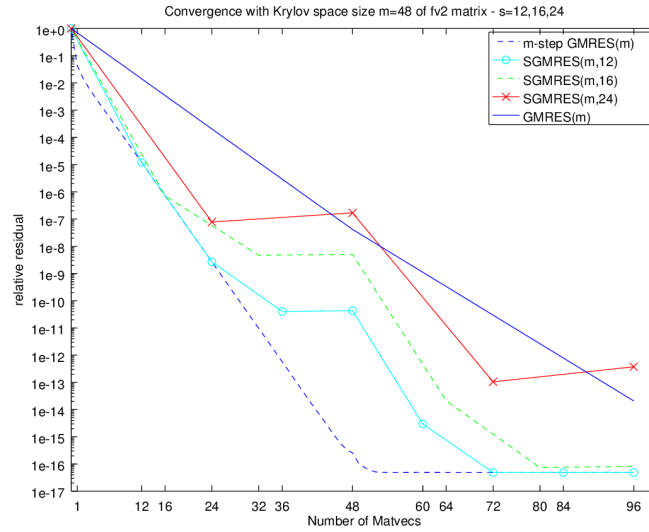


Figure 3: Results with matrix fv2 and fixed s-step SGMRES(m,s) with  $m = 48$ . Impact of block size  $s$  on convergence.

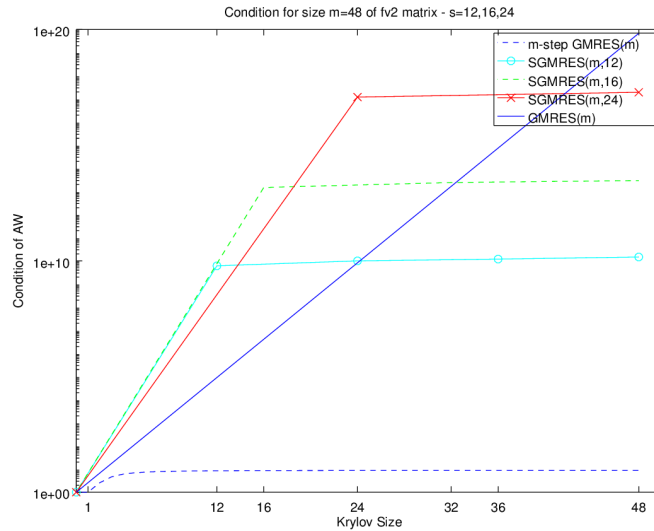


Figure 4: Results with matrix fv2 and fixed s-step SGMRES(m,s) with  $m = 48$ . Impact of block size  $s$  on condition number of  $W$ .

size. As expected, generally GMRES(m) is the best case, whereas SGMRES(m,m) is the worst case, and SGMRES(m,s) is inbetween.

A 'hockey-stick' pattern occurs for all  $s$  values during each restarting cycle, where just before restarting the residual has a mild plateau in the case of  $s = 12$ , but can even begin to increase slightly for  $s = 16$  and  $s = 24$ . In this last case, the residual becomes even larger than for  $s = m$ .

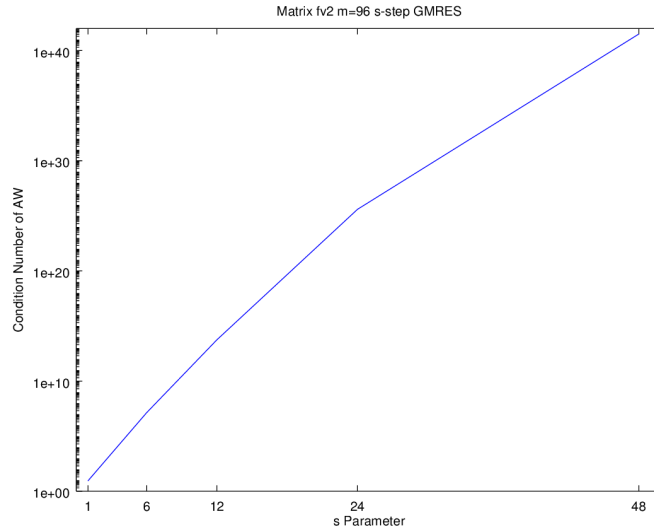


Figure 5: Results with matrix fv2 and  $m$ -step GMRES( $m$ ). Impact of restarting parameter  $m$  on condition number.

Meanwhile, this behavior is well corroborated by Figure 4. The condition number of the first block is quite large and then plateaus. Whereas it does so only moderately for  $s = 12$ , it does so increasingly rapidly for higher  $s$  values.

That this happens has already been precisely described by our stability analysis. That larger value for  $s$  induces higher condition numbers by Corollary 3.1, which directly explain the condition number graph in Figure 4. Moreover, numerical instability occurs right after the first block, and convergence stagnates after a few steps.

In Figure 5, we have plotted the condition number of the first block  $AW_1$  for  $s = 1, 4, 8, 16, 32$ , with  $m = 96$ , into a single line to show the growth of the condition. We see that it increases with  $s$ , as expected by Theorem 3.

Therefore, due to the heightened instabilities, increasing  $s$  past a certain point is a waste of computational time. In a sense, 'The damage has already been done.' Due to this effect, we conclude that a large fixed block size can destroy convergence right after the first block.

### 6.3 Variable $s$ -step FibGMRES( $m,s$ )

Due to this principle of damage from large  $s$  being done quickly when introduced early on in the computation, we advocate a variable block size, where the block size increases gradually. This allows us to properly balance the considerations of the parallel computations that  $s$ -step affords with the stability enhancements that a small block size affords. The fact that it is variable allows us a much greater degree of control over these two competing concerns that has not been allowed previously, as well as bringing in the field the techniques inside many adaptive type methods.

We run experiments again with the matrix fv2, and the Krylov basis  $W$ . We fix the restarting parameter to  $m = 48$  and the block size to  $s = 16$ . We aim to compare the extreme cases  $s = 1$  and  $s = m = 48$  to the fixed case  $s = 16$  and to the variable case FibGMRES( $m,s$ ) defined by Table 4. Here, we increase gradually the block size following a Fibonacci sequence capped at  $s = 16$ , and we recall that each new block  $B_j$  is of size  $s_j$  and that the Krylov size  $l_j$  is given by  $l_j = l_{j-1} + s_j$ . For sake of comparison, we

also gradually decrease the block size from  $s = 16$  to  $s = 1$  using the Fibonacci sequence in reverse order, as defined in Table 5.

In Figure 6, convergence of FibGMRES( $m,s$ ) is much better than convergence of a fixed  $s$ -step method or a variable  $s$ -step method with a decreasing block size. Indeed, we see that the method suggested by Table 5 behaves like SGMRES( $m,s$ ), with a hockey-stick pattern. On the other hand, FibGMRES curve closely follows the optimal standard GMRES curve.

As can be seen in Figure 7, the condition number of  $AW$  increases gradually for FibGMRES, whereas it is already large for the first block of the other methods. This emphasizes that the increased performance in Fibonacci  $s$ -step GMRES really is due to the order of the increasing step size, and the principle we introduced earlier that the damage can often already be done by the first step of the algorithm. Stability issues must be nipped in the bud early on before they spread.

$j$	1	2	3	4	5	6	7
$s_j$	1	2	3	5	8	13	16
$l_j$	1	3	6	11	19	32	48

Table 4: Variable increasing block size for  $m = 48$  and  $s = 16$ .

$j$	1	2	3	4	5	6	7
$s_j$	16	13	8	5	3	2	1
$l_j$	16	29	37	42	45	47	48

Table 5: Variable decreasing block size for  $m = 48$  and  $s = 16$ .

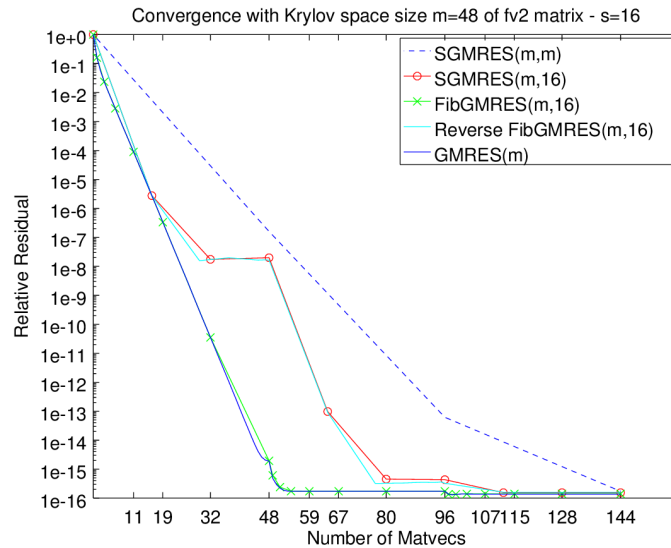


Figure 6: Convergence results with matrix fv2, with  $m = 48$  and  $s = 16$ . Comparison of fixed and variable  $s$ -step GMRES( $m$ ).

We now run experiments with a prototypical test problem, where the matrix arises from a Poisson equation in a unit square, discretized by a finite difference scheme, using a 5-point stencil. A regular

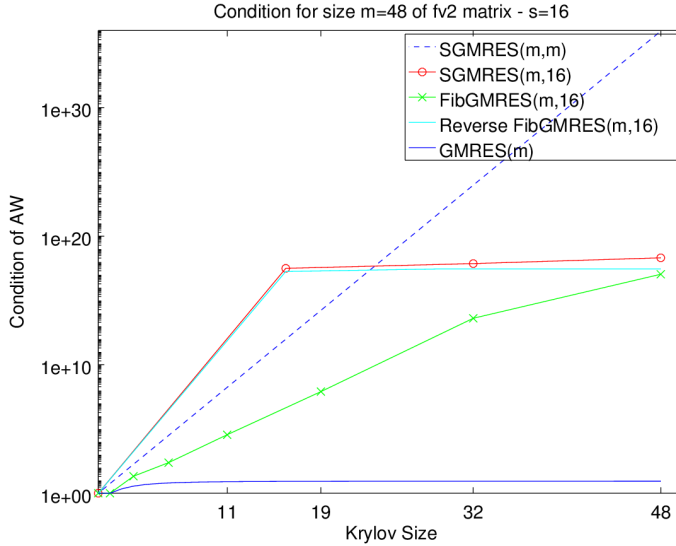


Figure 7: Condition results with matrix fv2, with  $m = 48$  and  $s = 16$ . Comparison of fixed and variable  $s$ -step GMRES( $m$ ).

grid of size  $150 \times 150$  results in a sparse matrix of order  $n = 22500$ . This Poisson matrix is not as well-conditioned as the fv2 matrix, so we can expect a slower convergence. We choose a larger restarting parameter  $m = 96$  and two maximal block sizes, namely  $s = 16$  and  $s = 32$ . The sequences of block sizes are defined in Tables 6 and 7. As an aside, we should note that when  $s = 32$ , the truncated Fibonacci numbers do not neatly add up to  $m = 96$ . In order to make a fair comparison with fixed  $s$ -step GMRES, we have chosen to modify the Fibonacci sequence at step  $j = 8$  in order to get  $l_j = 96$  at step  $j = 9$ . In practice, this is not a concern because the user would choose the maximal block size  $s$  and the maximal number of steps  $J$ , in order to get  $l_J$  close to a chosen  $m$  value.

Convergence results are plotted in Figure 8. Whereas for  $s = 16$ , the fixed  $s$ -step GMRES and the variable Fibonacci GMRES converge as quickly as the classical restarted GMRES, the behaviors are very different for  $s = 32$ . Indeed, fixed SGMRES(96,32) shows an erratic convergence rate where the residuals increase and are no longer bounded by those of  $m$ -step GMRES (where  $s = m$ ). On the other hand, FibGMRES is still very efficient and converges almost as fast as restarted GMRES.

Again, these results can be explained by the condition number of  $AW$  and by our stability analysis. As can be seen in Figure 9, the condition number of the first block is quite high with the fixed  $s$ -step method, but increases progressively with FibGMRES, in both cases  $s = 16$  and  $s = 32$ .

$j$	1	2	3	4	5	6	7	8	9	10
$s_j$	1	2	3	5	8	13	16	16	16	16
$l_j$	1	3	6	11	19	32	48	64	80	96

Table 6: Variable increasing block size for  $m = 96$  and  $s = 16$ .

#### 6.4 Large scale experiment with FibGMRES( $m,s$ )

We now look at some experiments done with a larger matrix and a larger  $m$  relative to  $s$ . These tests are important, because in general the larger the quantity  $\frac{m}{s}$  is, the more efficient FibGMRES is

$j$	1	2	3	4	5	6	7	8	9
$s_j$	1	2	3	5	8	13	14	18	32
$l_j$	1	3	6	11	19	32	46	64	96

Table 7: Variable increasing block size for  $m = 96$  and  $s = 32$ .

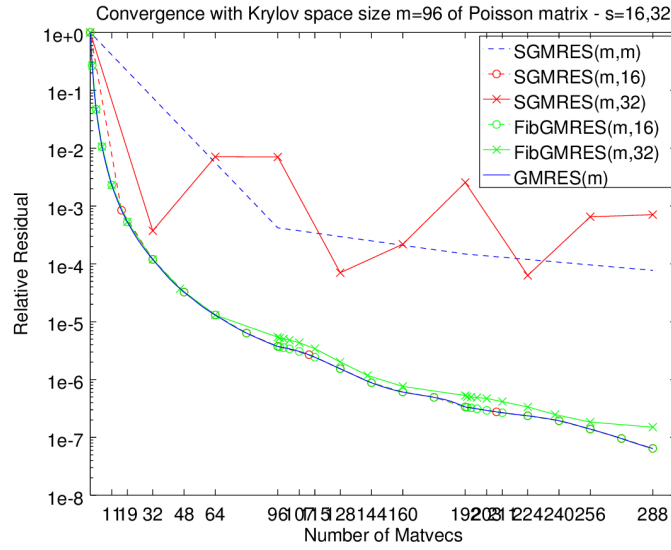


Figure 8: Convergence Results with the Poisson matrix, with  $m = 96$  and  $s = 16, 32$ .

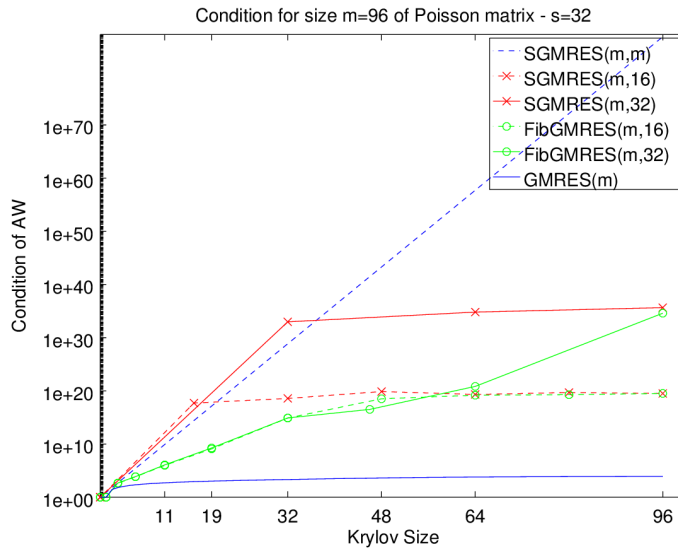


Figure 9: Results with the condition of the Poisson matrix, with  $m = 96$  and  $s = 16, 32$ .

compared to SGMRES. As we explained in Theorem 4, this is because the ratio of the total number of orthonormalizations and matrix-vector products asymptotically approach each other. Therefore, below we look at a larger Poisson matrix of size  $n = 100489$  so that we may extend the Krylov size to  $m = 400$ , while keeping the block size at  $s = 16$ .

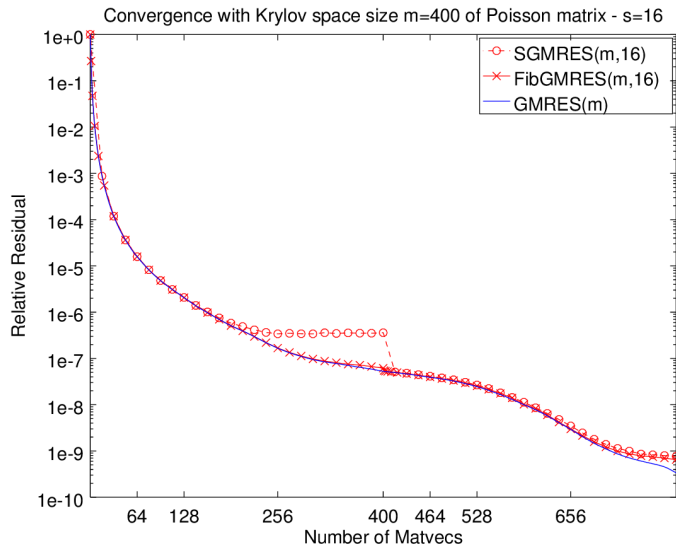


Figure 10: Convergence Results with the Poisson matrix, with  $m = 400$  and  $s = 16$ .

In Figure 10 we see that FibGMRES maintains its performance even as the Krylov size is extended further. In fact, it is interesting to compare Figure 10 with Figure 8, as we can see that it may take some time before we can see a divergence between FibGMRES and SGMRES.

## 7 Conclusion

Communication-avoiding Krylov methods are very efficient to increase performances on parallel computers. Among them,  $s$ -step GMRES builds an orthonormal basis of a Krylov subspace by consecutive blocks of size  $s$ . In this paper, we first showed how to use two basis in order to simplify the algorithm. Then, we proposed to vary the  $s$  and define an original variable  $s$ -step GMRES algorithm. Our stability analysis suggests to use an increasing sequence  $s_j$  of the block sizes.

What we have shown, in essence, is a beneficial tradeoff. An additional cost occurs in the first few steps of the start-up phase of variable step GMRES, because communication overheads are induced by the fan-in fan-out problems associated with the orthonormalizations of GMRES. However, the increased stability resulting from the adaptive nature of variable  $s$ -step GMRES in turn induces such a significant reduction in the number of required iterations that the cost savings necessarily follow. Moreover, we propose to use a Fibonacci sequence capped at some value  $s$  in order to avoid communications by limiting the number of steps in the start-up phase. Our numerical experiments show that our new variable  $s$ -step GMRES, called FibGMRES( $m,s$ ), converges often as quickly as restarted GMRES( $m$ ) and faster than fixed  $s$ -step, called SGMRES( $m,s$ ). Further, the performance is that of  $s$ -step methods once the sequence is capped.

As noted in the paper, we could save on memory by storing only the orthonormal basis. We could also improve the stability of the method by using a Newton basis for computing the block at each step[4].

In the future, we plan to implement our method on parallel computers, using a matrix power kernel and a communication-avoiding orthonormalization algorithm. This parallel version will be tested with very large matrices, arising from various computational science problems. Parallel domain decomposition methods combined with deflation will be used for preconditioning the matrices. Our variable  $s$ -step approach is quite general, therefore we wish to investigate how they can be applied to other  $s$ -step Krylov methods such as Conjugate Gradient or Bi-Conjugate Gradient methods.

## References

- [1] Z. BAI, D. HU, AND L. REICHEL, *A Newton Basis GMRES Implementation*, IMA Journal of Numerical Analysis, (1994), pp. 563–581. 14(4).
- [2] R. H. BISSELING, T. M. DOUP, AND L. D. J. C. LOYENS, *A Parallel Interior Point Algorithm for Linear Programming on a Network of Transputers*, Annals of Operations Research, (1993), pp. 49–86. 43(2).
- [3] D. CALVETTI, J. PETERSEN, AND L. REICHEL, *A Parallel Implementation of the GMRES Method*, in Numerical Linear Algebra, L. Reichel, A. Ruttan, and R. S. Varga, eds., de Gruyter, Berlin, 1993, pp. 31–45.
- [4] E. CARSON AND J. DEMMEL, *An Efficient Deflation Technique for the Communication Avoiding Conjugate Gradient Method*, Electronic Transaction on Numerical Analysis, (2014), pp. 125–141. 43.
- [5] A. T. CHRONOPOULOS, *S-Step Iterative Methods for (non) Symmetric (in) Definite Linear Systems*, SIAM journal on numerical analysis, (1991), pp. 1776–1789. 28(6).
- [6] R. D. DA CUNHA AND T. HOPKINS, *A Parallel Implementation of the Restarted GMRES Iterative Algorithm for Nonsymmetric Systems of Linear Equations*, Advances in Computational Mathematics, (1994), pp. 261–277. 2(3).
- [7] T. A. DAVIS AND Y. HU, *The University of Florida Sparse Matrix Collection*, ACM Transactions on Mathematical Software (TOMS), (2011). 38(1).
- [8] E. DE STURLER AND H. A. VAN DER VORST, *Reducing the Effect of Global Communication in GMRES(m) and CG on Parallel Distributed Memory Computers*, Applied Numerical Mathematics, (1995), pp. 441–459. 18(4).
- [9] J. DEMMEL, L. GRIGORI, M. HOEMMEN, AND J. LANGOU, *Communication-optimal Parallel and Sequential QR and LU Factorizations*, SIAM Journal on Scientific Computing, (2012), pp. A206–A239. 34(1).
- [10] G. R. DI BROZOLO AND Y. ROBERT, *Parallel Conjugate Gradient-like Algorithms for Solving Sparse Nonsymmetric Linear Systems on a Vector Multiprocessor*, Parallel Computing, (1989), pp. 223–239. 11(2).
- [11] J. ERHEL, *A Parallel GMRES Version for General Sparse Matrices*, Electronic Transaction on Numerical Analysis, (1995), pp. 160–176. 3 (Dec).
- [12] L. GIRAUD, J. LANGOU, M. ROZLOZNIK, AND J. VAN DEN ESHOF, *Rounding Error Analysis of the Classical Gram-Schmidt Orthogonalization Process*, *Numerische Mathematik*, (2005), pp. 87–100. 101(1).
- [13] G. H. GOLUB AND C. F. VAN LOAN, *Matrix Computations* (4th edition), *John Hopkins University Press*, 2013. (Vol. 4). JHUP.
- [14] N. J. HIGHAM, *Accuracy and Stability of Numerical Algorithms* (second edition), *SIAM*, 2002.
- [15] M. F. HOEMMEN, *Communication-avoiding Krylov subspace methods*, *PhD thesis, EECS Department, University of California, Berkeley, Apr 2010*.
- [16] A. S. HOUSEHOLDER, *The Theory of Matrices in Numerical Analysis*, *Dover Publications.*, 1964.
- [17] W. JALBY AND B. PHILIPPE, *Stability Analysis and Improvement of the Block Gram-Schmidt Algorithm*, *SIAM journal on scientific and statistical computing*, (1991), pp. 1058–1073. 12(5).



- [18] C. T. KELLEY, Iterative Methods for Linear and Nonlinear Equations, *SIAM*, 1995.
- [19] S. KIM AND A. T. CHRONOPOULOS, An Efficient Nonsymmetric Lanczos Method on Parallel Vector Computers, *Journal of Computational and Applied Mathematics*, (1992), pp. 357–374. 42(3).
- [20] M. MOHIYUDDIN, M. HOEMMEN, J. DEMMEL, AND K. YELICK, Minimizing Communication in sparse matrix solvers, *Proceedings of the Conference on High Performance Computing Networking, Storage and Analysis*, (2009), p. 36.
- [21] J. N. NASSIF, ERHEL AND B. PHILLIPE, Introduction to Computational Linear Algebra, *CRC Press*, 2015.
- [22] D. NUENTSA WAKAM AND J. ERHEL, Parallelism and Robustness in GMRES with the Newton Basis and the Deflated Restarting, *Electronic Transactions on Numerical Analysis*, 40 (2013), pp. 381–406.
- [23] B. PHILIPPE AND L. REICHEL, On the generation of Krylov subspace bases, *Applied Numerical Mathematics (APNUM)*, 62 (2012), pp. 1171–1186.
- [24] B. PHILLIPE AND R. SIDJE, Parallel Algorithms for the Arnoldi Procedure., *Iterative Methods in Linear Algebra, II, IMACS Ser. Comput. Appl. Math*, (1994), pp. 156–165. 3.
- [25] K. ROSEN, Elementary Number Theory, *Pearson Education.*, 2011.
- [26] Y. SAAD, Iterative Methods for Sparse Linear Systems, *SIAM.*, 2003.
- [27] Y. SAAD AND M. H. SCHULTZ, GMRES: A Generalized Minimal Residual Algorithm for Solving Nonsymmetric Linear Systems, *SIAM Journal on scientific and statistical computing*, (1986), pp. 856–869. 7(3).
- [28] J. N. SHADID AND R. S. TUMINARO, Sparse Iterative Algorithm Software for Large Scale MIMD Machines: An initial discussion and implementation, *Concurrency: practice and experience*, (1992), pp. 481–497. 4(6).
- [29] R. B. SIDJE, Alternatives for Parallel Krylov Basis Computation, *Numerical Linear Algebra with Applications*, 4 (1997), pp. 305–331.
- [30] D. N. WAKAM AND J. ERHEL, Parallelism and Robustness in GMRES with a Newton Basis and Deflated Restarting, *Electronic Transactions on Numerical Analysis*, (2013), pp. 381–406. 40.
- [31] H. F. WALKER, Implementation of the GMRES Method Using Householder Transformations, *SIAM Journal on Scientific and Statistical Computing*, (1988), pp. 152–163. 9(1).