



**HAL**  
open science

# Convergence of a cartesian method for elliptic problems with immersed interfaces

Lisl Weynans

► **To cite this version:**

Lisl Weynans. Convergence of a cartesian method for elliptic problems with immersed interfaces. [Research Report] RR-8872, INRIA Bordeaux; Univ. Bordeaux. 2017, pp.24. hal-01280283v3

**HAL Id: hal-01280283**

**<https://inria.hal.science/hal-01280283v3>**

Submitted on 13 Jul 2018 (v3), last revised 16 Jul 2019 (v6)

**HAL** is a multi-disciplinary open access archive for the deposit and dissemination of scientific research documents, whether they are published or not. The documents may come from teaching and research institutions in France or abroad, or from public or private research centers.

L'archive ouverte pluridisciplinaire **HAL**, est destinée au dépôt et à la diffusion de documents scientifiques de niveau recherche, publiés ou non, émanant des établissements d'enseignement et de recherche français ou étrangers, des laboratoires publics ou privés.



# Convergence of a cartesian method for elliptic problems with immersed interfaces

L. Weynans<sup>1</sup>

<sup>1</sup>Team Memphis, INRIA Bordeaux-Sud-Ouest & CNRS UMR 5251,  
Université de Bordeaux, France

**RESEARCH  
REPORT**

**N° 8872**

Septembre 2017

Project-Teams Memphis





## Convergence of a cartesian method for elliptic problems with immersed interfaces

L. Weynans<sup>1\*</sup>

<sup>1</sup>Team Memphis, INRIA Bordeaux-Sud-Ouest & CNRS UMR 5251,  
Université de Bordeaux, France

Project-Teams Memphis

Research Report n° 8872 — Septembre 2017 — 27 pages

### Abstract:

We study in this report the convergence of a Cartesian method for elliptic problems with immersed interfaces that was presented in a previous paper [8]. This method is based on additional unknowns located on the interface, used to express the jump conditions across the interface and discretize the elliptic operator in each subdomain separately. It is numerically second-order accurate in  $L^\infty$ -norm. This paper is a step toward the convergence proof of this method. We prove the convergence of the method in two cases: the original second-order method in one dimension, and a first-order version in two dimensions. The proof of convergence takes advantage of a discrete maximum principle to obtain estimates on the coefficients of the inverse matrix. More precisely, we obtain estimates for the sums of the coefficients of several blocks of the inverse matrix. Associated to the consistency error, which has different leading orders throughout the domain, these estimates lead to the convergence results.

**Key-words:** Finite-differences, cartesian method, elliptic problem, interface discontinuity, interface unknowns, discrete Green's function, convergence

---

\* Corresponding author: [lisl.weynans@inria.fr](mailto:lisl.weynans@inria.fr)

RESEARCH CENTRE  
BORDEAUX – SUD-OUEST

351, Cours de la Libération  
Bâtiment A 29  
33405 Talence Cedex

## **Convergence d'une méthode cartésienne pour des problèmes elliptiques avec interfaces immergées**

**Résumé :** Nous étudions dans ce rapport la convergence d'une méthode sur grille cartésienne pour des problèmes elliptiques avec des interfaces immergées, introduite dans [8]. Cette méthode repose sur l'utilisation d'inconnues supplémentaires situées sur l'interface, qui servent à discrétiser séparément l'opérateur elliptique dans chaque sous-domaine et à exprimer avec une précision suffisante les conditions de saut au travers de l'interface. Il a été montré numériquement dans [8] que cette méthode converge à l'ordre deux en norme  $L^\infty$ . Cet article est un pas en avant vers la preuve de la convergence de cette méthode. En effet, nous prouvons la convergence dans deux cas: celui de la méthode originale en une dimension, et celui d'une version à l'ordre un, mais en deux dimensions. La preuve de convergence fait appel à des fonctions de Green discrètes et tire profit d'un principe du maximum discret pour obtenir des estimations des coefficients de la matrice inverse.

**Mots-clés :** Différences finies, problème elliptique, méthode cartésienne, discontinuité au travers de l'interface, inconnues sur l'interface, fonction de Green discrète, convergence

## Contents

<b>1</b>	<b>Introduction</b>	<b>4</b>
<b>2</b>	<b>Description of the numerical schemes</b>	<b>5</b>
2.1	Interface representation and classification of grid points . . . . .	5
2.2	Second-order discretization in one dimension . . . . .	6
2.3	First-order discretization in two dimensions . . . . .	7
2.4	Discretization matrix . . . . .	8
<b>3</b>	<b>Convergence proof in two dimensions for the first-order version of the method</b>	<b>8</b>
3.1	Monotonicity of the discretization matrix . . . . .	9
3.2	Notations and reminder of the method of Ciarlet . . . . .	11
3.3	Convergence proof . . . . .	13
3.3.1	Coupled estimates for grid points and interface points . . . . .	13
3.3.2	Coupled estimates for grid points in $\Omega_h^\delta$ and $\Omega_h^*$ . . . . .	15
3.3.3	Convergence result . . . . .	19
<b>4</b>	<b>Convergence proof for the one-dimensional case</b>	<b>19</b>
4.1	Monotonicity of the discretization matrix . . . . .	19
4.2	Second-order convergence . . . . .	20
<b>5</b>	<b>Discussion</b>	<b>20</b>
<b>6</b>	<b>Numerical validation</b>	<b>22</b>
6.1	Numerical study of the discrete Green functions . . . . .	22
6.2	Problem 1 . . . . .	23
6.3	Problem 2 . . . . .	23

## 1 Introduction

In this paper we aim to study the convergence of a method developed in a previous paper [8] to solve on a Cartesian grid the following problem elliptic problem, defined on a domain  $\Omega$  consisting in the union of two subdomains  $\Omega_1$  and  $\Omega_2$ , separated by a complex interface  $\Sigma$  (see Figure 1):

$$-\nabla \cdot (k \nabla u) = f \text{ on } \Omega = \Omega_1 \cup \Omega_2 \quad (1)$$

$$\llbracket u \rrbracket = \alpha \text{ on } \Sigma \quad (2)$$

$$\llbracket k \frac{\partial u}{\partial n} \rrbracket = \beta \text{ on } \Sigma \quad (3)$$

with  $k$  constant on each subdomain  $\Omega_1$  and  $\Omega_2$ , assorted with Dirichlet boundary conditions on  $\delta\Omega$ , defined as the boundary of  $\Omega$ , and where  $\llbracket \cdot \rrbracket$  means  $\cdot_1 - \cdot_2$ . The domain  $\Omega$  can have an arbitrary shape. In the whole paper, we assume that the solution  $u$  of problem (1)-(3) exists and is smooth enough so that our truncation error analyses are valid. We assume, by convention, that the coefficient  $k$  is larger in  $\Omega_2$  than in  $\Omega_1$  ( $k_2 > k_1$ ), and that the vector  $\boldsymbol{n}$  is the outside normal for the subdomain  $\Omega_2$ . These conventions will be used in the convergence proof. Note that others configurations than the one illustrated on this figure are possible, for instance,  $\Omega_1$  separated in several subdomains, and are all covered by our analysis.

This elliptic problem with discontinuities across an interface appears in numerous physical or biological models. Among the well-known applications are heat transfer, electrostatics, incompressible flows with discontinuous densities and viscosities [21], but similar elliptic problems arise for instance in tumour growth modelling, where one has to solve a pressure equation [5], or in the modelling of electric potential in biological cells: see for instance [22] or [15] and [16] where the mentioned numerical method was applied.

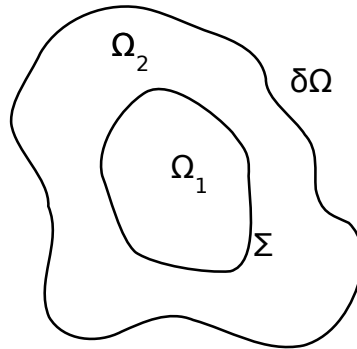


Figure 1: Geometry considered: two subdomains  $\Omega_1$  and  $\Omega_2$  separated by a complex interface  $\Sigma$ .

The method that we study is based on a finite-difference discretization and a dimension by dimension approach. In order to solve accurately the problem defined by equations (1) - (3) near the interface, additional unknowns are defined at the intersections of the interface with the grid, see Figure 2. These interface unknowns are used in the discretization of the elliptic operator near the interface, and prevent to derive specific finite differences formulas containing jump terms, corrective terms, or needing the inversion of a linear system, as in many other second-order Cartesian methods. In order to solve the interface unknowns, the flux jump conditions are discretized and added to the linear system to solve.

In the following we will prove the convergence of the method in two cases: the original second-order method in one dimension, and a first-order version in two dimensions. This first-order version is based on the same ideas as the original method, but the discretization of the normal derivatives across the interface has only a first-order truncation error, instead of a second-order for the original method.

The proof of convergence is based on the monotonicity of the discretization matrix and a discrete maximum principle. This monotonicity property is not straightforward for the second-order discretization, since the discretization matrix is not diagonally dominant, due to the discretization of the flux jump conditions across the interface. Then we obtain accurate estimates of the coefficients of the inverse matrix, block by block, in order to account for the different types of truncation errors, thanks to a technique presented in [7]. More precisely, we first obtain linear relationships between the sums of the coefficients of several blocks of the inverse matrix, then we combine these relationships in order to obtain estimates of the coefficients of the inverse matrix. Combined to the truncation error expressed block by block, these estimates provide first- or second-order bounds on the numerical error.

## 2 Description of the numerical schemes

### 2.1 Interface representation and classification of grid points

In order to describe accurately the geometric configuration in the vicinity of the interface we use the level set method introduced by Osher and Sethian [25]. We refer the interested reader to [26], [27] and [24] for recent reviews of this method. The zero isoline of the level set function, defined by the signed function  $\varphi$ :

$$\varphi(x) = \begin{cases} dist_{\Sigma}(x) & \text{outside of the interface} \\ 0 & \text{on the interface,} \\ -dist_{\Sigma}(x) & \text{inside of the interface} \end{cases} \quad (4)$$

represents implicitly the interface  $\Sigma$  immersed in the computational domain.

As recalled in [9], the level-set, being a distance function, is 1-Lipshitz and almost everywhere differentiable. Moreover, if  $\varphi$  is differentiable at a point  $x$ , then it satisfies the so-called Eikonal equation at  $x$ :

$$\|\nabla\varphi(x)\| = 1.$$

The smoothness of the level-set is in fact strongly related to the smoothness of the interface: as proved in [12], p 355, if the interface is  $C^2$ , then there exists a real  $r_0 > 0$  such that the level-set is  $C^2$  for all  $x, y$  such that  $|\varphi(x, y)| < r_0$ .

Another useful property of the level set function, where it is differentiable, is

$$\mathbf{n}(x) = \frac{\nabla\varphi(x)}{|\nabla\varphi(x)|}, \quad (5)$$

where  $\mathbf{n}(x)$  is the outward normal vector of the isoline of  $\varphi$  passing on  $x$ . In this paper, the level-set is defined so that  $\mathbf{n}$  is the outside normal for the subdomain  $\Omega_2$ .

Considering the nodes used for discretizing the problem (1)-(3):

- The problem (1) - (3) is discretized on a uniform Cartesian grid covering  $\Omega_1 \cup \Omega_2$ , see Figure 2. The grid spacing is denoted  $h$ . The points on the cartesian grid are named either with letters such as  $P$  or  $Q$ , or with indices such as  $M_{i,j} = (x_i, y_j) = (ih, jh)$  if one needs to have informations about the location of the point. We denote by  $u_{ij}^h$  the approximation of  $u$  at the point  $(x_i, y_j)$ . The set of grid points located inside the domain  $\Omega$  is denoted  $\Omega_h$ .



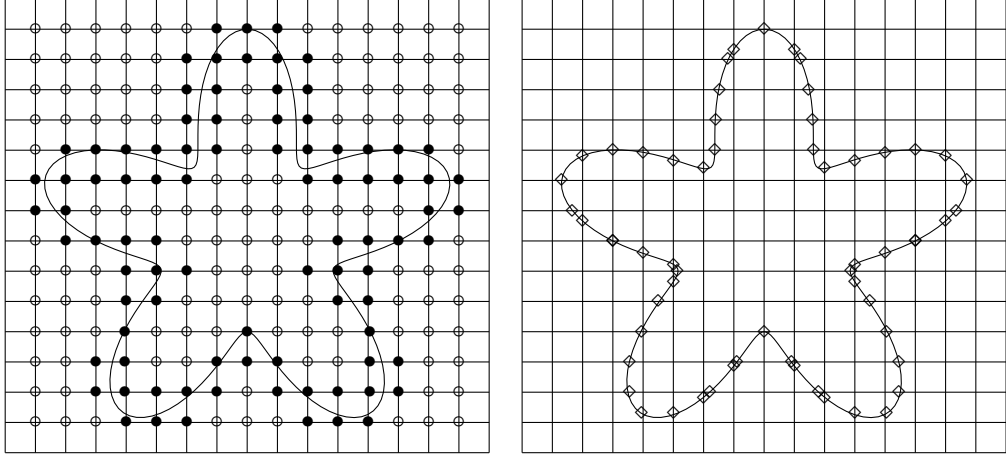


Figure 2: Left: regular nodes described by circles  $\circ$ , irregular nodes (belonging to  $\Omega_h^*$ ) described by bullets  $\bullet$ , right: nodes belonging to  $\Sigma_h$ .

- We say that a grid point is irregular if the sign of  $\varphi$  changes between this point and at least one of its neighbors, see Figure 2. On the contrary, grid points that are not irregular are said regular grid points. The set of irregular grid nodes is denoted  $\Omega_h^*$ . The subset  $\Omega_h^\delta$  is defined as the set of regular grid points where the stencil for the discrete elliptic operator (described in the following) crosses the isolines  $\varphi = \delta$  or  $\varphi = -\delta$ , with  $\delta$  such that  $0 < \delta < r_0$ . Notably,  $\varphi$  is  $C^2$  on  $\Omega_h^\delta$ , with bounded derivatives.
- We define the interface point  $I_{i+1/2,j} = (x_{i+1/2}, y_j)$  as the intersection of the interface and the segment  $[M_{i,j}M_{i+1,j}]$ , if it exists. Similarly, the interface point  $I_{i,j+1/2} = (x_i, y_{j+1/2})$  is defined as the intersection of the interface and the segment  $[M_{i,j}M_{i,j+1}]$ . At each interface point we create two additional unknowns, called interface unknowns, and denoted by  $u_{i+1/2,j}^{1,h}$  and  $u_{i+1/2,j}^{2,h}$ , or  $u_{i,j+1/2}^{1,h}$  and  $u_{i,j+1/2}^{2,h}$ . The interface unknowns carry the values of the numerical solution on each side of the interface.

The set of interface points is denoted  $\Sigma_h$ , see Figure 2 for an illustration. We also denote  $\delta\Omega_h$  the set of points defined as the intersection between the grid and  $\delta\Omega$ . They are used to impose boundary conditions.

## 2.2 Second-order discretization in one dimension

- Discrete elliptic operator on a grid point  $M_i$

We use the standard three point stencil:  $M_i$  and its nearest neighbors in each direction, either grid points or interface points. We denote  $u_E$  the value of the numerical solution on the nearest point in the east direction, and  $x_E$  its coordinate. Similarly, we define  $u_W$  and  $x_W$  in the west direction. The discretization at point  $M_i$  reads

$$-\left(\nabla \cdot (k \nabla u)\right)_i^h = -k_i \frac{2}{x_E - x_W} \left( \frac{u_E - u_i}{x_E - x_i} - \frac{u_i - u_W}{x_i - x_W} \right). \quad (6)$$

The truncation error of this discretization is second-order accurate if all the points involved are grid points, and first-order otherwise.

- Discrete jump conditions across the interface

On Figure 3, we present a prototypical situation around the interface: the interface point  $x_{int} = x_{k+1/2}$  is located between the grid points  $x_k$  and  $x_{k+1}$  and we denote  $dh = x_{k+1} - x_{k+1/2}$ . We assume for instance that the subdomain  $\Omega_2$  is located on the left side of the interface, and  $\Omega_1$  on the right side. The normal to the interface is oriented from the left to the right.

The left and right normal derivatives at the interface are computed with second-order formulas using three non-equidistant points:

$$\begin{aligned} (\partial_n u^1)_{k+1/2}^h &= \frac{1+2d}{d(d+1)h} (u_{k+1}^h - u_{k+1/2}^{1,h}) - \frac{d}{(1+d)h} (u_{k+2}^h - u_{k+1}^h), \\ (\partial_n u^2)_{k+1/2}^h &= \frac{3-2d}{(1-d)(2-d)h} (u_{k+1/2}^{2,h} - u_k^h) - \frac{1-d}{(2-d)h} (u_k^h - u_{k-1}^h). \end{aligned}$$

We express the jump conditions at point  $x_{k+1/2}$  as

$$u_{k+1/2}^{2,h} - u_{k+1/2}^{1,h} = \alpha(x_{k+1/2}), \quad (7)$$

$$k_2(\partial_n u^2)_{k+1/2}^h - k_1(\partial_n u^1)_{k+1/2}^h = \beta(x_{k+1/2}). \quad (8)$$

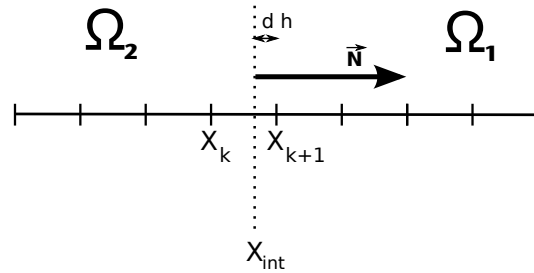


Figure 3: Geometrical configuration near the interface in one dimension.

### 2.3 First-order discretization in two dimensions

- Discrete elliptic operator

We use a standard five point stencil. We use the grid point  $M_{i,j}$  and its nearest neighbors, interface or grid points, in each direction. More precisely, we denote  $u_S^h$  the value of the solution on the nearest point in the south direction, with coordinates  $(x_S, y_S)$ . Similarly, we define  $u_N^h$ ,  $u_W^h$  and  $u_E^h$  and the associated coordinates  $(x_N, y_N)$ ,  $(x_W, y_W)$  and  $(x_E, y_E)$ . The discretization reads

$$\begin{aligned} -(\nabla \cdot (k \nabla u))_{i,j}^h &= -(\nabla \cdot (k \nabla u))^h(x_i, y_j) \\ &= -k_{i,j} \left( \frac{u_N^h - u_{ij}^h}{x_N - x_i} - \frac{u_{ij}^h - u_S^h}{x_i - x_S} \right) \frac{2}{x_N - x_S} - k_{i,j} \left( \frac{u_E^h - u_{ij}^h}{y_E - y_j} - \frac{u_{ij}^h - u_W^h}{y_j - y_W} \right) \frac{2}{y_E - y_W}. \quad (9) \end{aligned}$$

The truncation error of this discretization is second-order accurate if all the points involved are grid points, that is, on regular grid points, and first-order on irregular grid points.

- Discrete jump conditions across the interface

We discretize the jump conditions (2) and (3) at each interface point  $I_{i+1/2,j}$  as:

$$u_{i+1/2,j}^{2,h} - u_{i+1/2,j}^{1,h} = \alpha(I_{i+1/2,j}), \quad (10)$$

$$k_2(\partial_n u^2)_{i+1/2,j}^h - k_1(\partial_n u^1)_{i+1/2,j}^h = \beta(I_{i+1/2,j}), \quad (11)$$

and similarly for each interface point  $I_{i,j+1/2}$ . The discretization of the normal derivatives depends of the local geometry of the interface. On Figure 4 one can observe the four cases that are met in practice, if  $h$  is small enough. The first intersection between the normal to the interface and the grid is located on a segment: either  $[M_{i,j}, M_{i,j-1}]$ , or  $[M_{i,j-1}, M_{i+1,j-1}]$ , or  $[M_{i,j}, M_{i,j+1}]$ , or  $[M_{i,j+1}, M_{i+1,j+1}]$ .

The discrete normal derivative is computed as the normal derivative of the linear interpolant of the numerical solution on the triangle composed of the interface point  $I_{i+1/2,j}$  and the aforementioned segment. If we denote  $K$  this triangle,  $(x_1, y_1)$ ,  $(x_2, y_2)$  and  $(x_3, y_3)$  its vertices, and  $u_1$ ,  $u_2$  and  $u_3$  the associated values, the basis functions on the vertices for the linear interpolation write

$$\lambda_j(x, y) = \alpha_j x + \beta_j y + \gamma_j, \quad j = 1, 2, 3,$$

with

$$\begin{aligned} \alpha_j &= \frac{y_k - y_i}{(x_j - x_k)(y_j - y_i) - (x_j - x_i)(y_i - y_k)}, \\ \beta_j &= \frac{x_i - x_k}{(x_j - x_k)(y_j - y_i) - (x_j - x_i)(y_i - y_k)}, \\ \gamma_j &= \frac{x_k y_i - x_i y_k}{(x_j - x_k)(y_j - y_i) - (x_j - x_i)(y_i - y_k)}, \end{aligned}$$

$(n_x, n_y)$  being an approximation of the normal at the interface point. With these notations, the approximation of the normal derivative writes for instance for the interface point  $I_{i+1/2,j}$

$$(\partial_n u)_{i+1/2,j}^h = (u_1 \alpha_1 + u_2 \alpha_2 + u_3 \alpha_3) n_x + (u_1 \beta_1 + u_2 \beta_2 + u_3 \beta_3) n_y.$$

This discretization is only first-order accurate because it is based on a linear interpolation.

## 2.4 Discretization matrix

In the following we denote  $A_h$  the matrix of the linear system described in the previous subsections, in one or two dimensions. We replace the variables  $u_{i+1/2,j}^{2,h}$  and  $u_{i,j+1/2}^{2,h}$  by  $u_{i+1/2,j}^{1,h} + \alpha(I_{i+1/2,j})$  and  $u_{i,j+1/2}^{1,h} + \alpha(I_{i,j+1/2})$  in the equations (8) or (11), and (6) or (9), in order to eliminate the jump conditions (10) or (7) from the linear system. Because the jump conditions (7) or (10) are expressed exactly, this does not change the truncation errors for these equations.

## 3 Convergence proof in two dimensions for the first-order version of the method

The sketch of the convergence proof is the following: first we prove the monotonicity of the discretization matrix, then we use it to apply a discrete maximum principle to the matrix, and obtain estimates on the coefficients of the inverse matrix, block by block.

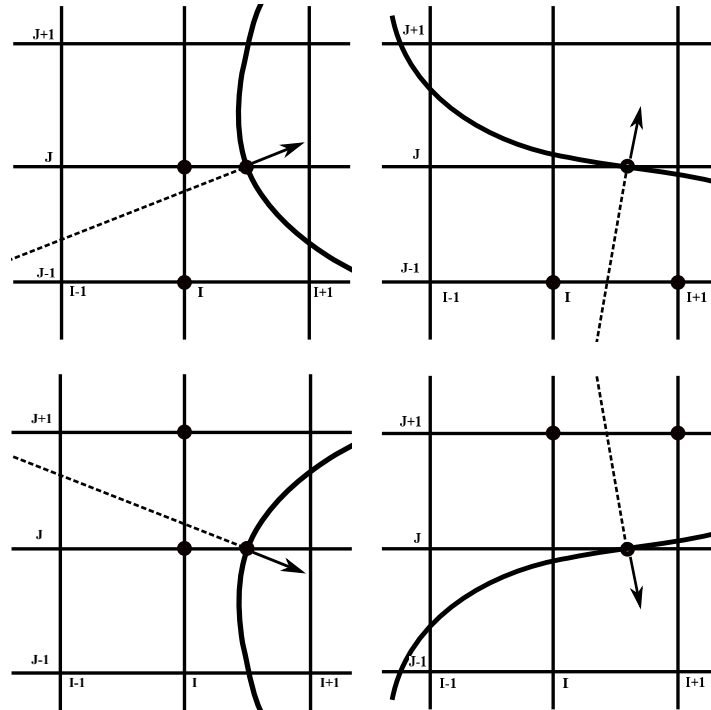


Figure 4: All possible stencils for the first-order flux discretization on the left side of the interface, with points involved in the discretization signaled by black circles.

### 3.1 Monotonicity of the discretization matrix

Here we aim to prove that  $A_h$  is monotone, that is, that all the coefficients of the inverse matrix of  $A_h$  are non-negative. Let  $v$  be an array of size  $N + N_{int}$ , corresponding to  $N$  grid points and  $N_{int}$  interface unknowns, such that all coefficients of  $A_h v$  are non-negative, which we denote  $A_h v \geq 0$ . We aim to prove that all coefficients of  $v$  are non-negative.

To this purpose, we will use the following remark:

*With the convention used for the normal to the interface, illustrated on Figure 5, if the minimum of  $v$  is located on an interface point, then at this interface point the discrete normal derivative in  $\Omega_1$  is positive and the discretized normal derivative in  $\Omega_2$  is negative.*

Indeed, the approximation of the normal derivative is constant, because it is computed from a linear interpolation on a triangle. If the minimum of  $v$  is located on the considered interface point, then the left normal derivative at this interface point is negative and the right normal derivative at this interface point is positive. Moreover, if the approximated normal derivative is zero, then the three points values involved in the stencil are equal.

Now we consider the minimum of  $v$  in the whole domain, interface points included. This value can either be located on a grid point in one of the subdomains  $\Omega_1$  or  $\Omega_2$ , or on an interface point.

- If the minimum is located on one border of the computational domain

We assume for instance that the minimum of  $v$  is  $v_{1,j}$ , located on the grid point  $M_{1,j}$ , such that  $M_{2,j}$ ,  $M_{1,j+1}$  and  $M_{1,j-1}$  also belong to the computational domain. Therefore, the boundary is located

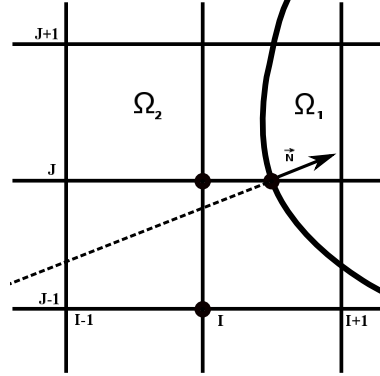


Figure 5: Geometrical configuration near the interface in two dimensions.

on the left side of  $M_{1,j}$ . The other cases would be treated the same way. The elliptic operator inequality on this grid point yields:

$$\frac{4v_{1,j} - v_{2,j} - v_{1,j+1} - v_{1,j-1}}{h^2} \geq 0,$$

then we have  $4v_{1,j} \geq v_{2,j} + v_{1,j+1} + v_{1,j-1} \geq 3v_{1,j}$  and thus  $v_{1,j} \geq 0$ . Therefore all values of  $v$  are non-negative.

- If the minimum is reached on a grid point in one subdomain sharing at least one point with  $\delta\Omega$

In this case we denote  $(i_0, j_0)$  the indices of the smallest component of  $v$ . We assume the grid point is a regular grid point (otherwise the formula would have slightly different weights, but the reasoning would be the same). Using the elliptic operator inequality on this point we can write:

$$4v_{i_0, j_0} - v_{i_0+1, j_0} - v_{i_0-1, j_0} - v_{i_0, j_0+1} - v_{i_0, j_0-1} \geq 0,$$

we deduce that  $v_{i_0+1, j_0} = v_{i_0-1, j_0} = v_{i_0, j_0+1} = v_{i_0, j_0-1} = v_{i_0, j_0}$ . Using similar inequalities of the elliptic operator in all the subdomain, we deduce that all values in the subdomain, including the boundary values, are equal to  $v_{i_0, j_0}$ . We use now the reasoning of the last paragraph to conclude that all values of  $v$  are non-negative.

- If the minimum is reached on a grid point in one subdomain which does not share any point with  $\delta\Omega$

We use the notations and geometrical configuration of Figure 3. We assume, without loss of generality, that the subdomain is  $\Omega_1$  and we denote  $(i_0, j_0)$  the indices of the smallest component of  $v$ . We assume the grid point is a regular grid point (otherwise the formula would have slightly different weights, but the reasoning would be the same). Writing the elliptic operator inequality on this point, we obtain

$$4v_{i_0, j_0} - v_{i_0+1, j_0} - v_{i_0-1, j_0} - v_{i_0, j_0+1} - v_{i_0, j_0-1} \geq 0,$$

and we deduce that  $v_{i_0+1, j_0} = v_{i_0-1, j_0} = v_{i_0, j_0+1} = v_{i_0, j_0-1} = v_{i_0, j_0}$ . Using similar inequalities of the elliptic operator in all the subdomain, we deduce that all values in the subdomain, including the interface values, are equal to the minimum value  $v_{i_0, j_0}$ .

Let us consider one of these interface values, located for instance on point  $I_{i+1/2, j}$ . As noticed previously, the fact that all values are equal in the subdomain implies that the normal derivative at the interface point is zero. Due to the fact that  $A_h v \geq 0$ , we can write on this interface point:

$$0 = k_1(\partial_n v^1)_{i+1/2, j}^h \leq k_2(\partial_n v^2)_{i+1/2, j}^h.$$

On the other side, because the minimum value is reached on this interface point, we have also

$$(\partial_n v^2)_{i+1/2,j}^h \geq 0.$$

Consequently,  $(\partial_n v^1)_{i+1/2,j}^h = (\partial_n v^2)_{i+1/2,j}^h = 0$ , and the values of the grid points involved in the stencil for  $(\partial_n v^2)_{i+1/2,j}^h$  are equal to the value of the interface point. It means that there are two grid points in the subdomain  $\Omega_2$  where the minimum value is reached.

In this paper we have considered so far that there are only two subdomains. Therefore, we know that the subdomain  $\Omega_2$  has a non-void intersection with  $\delta\Omega$ , and we can apply the reasoning of the last paragraph to conclude. In the case where more subdomains were considered, we would distinguish whether the subdomain  $\Omega_2$  has a non-void intersection with  $\delta\Omega$  or not. If not the case, then we would apply again the reasoning of this paragraph, switching from subdomains to subdomains, until finding a subdomain whose intersection with  $\delta\Omega$  is non empty.

- If the minimum is located on one interface point

Without loss of generality, we assume that the minimum is located on  $I_{i+1/2,j}$ . On this interface point we have the two relationships

$$\begin{aligned} (\partial_n v^2)_{i+1/2,j}^h &\leq 0, \\ (\partial_n v^1)_{i+1/2,j}^h &\geq 0. \end{aligned}$$

Furthermore, we know that

$$k_2(\partial_n v^2)_{i+1/2,j}^h - k_1(\partial_n v^1)_{i+1/2,j}^h \geq 0.$$

We infer from the previous inequalities that  $(\partial_n v^2)_{i+1/2,j}^h = (\partial_n v^1)_{i+1/2,j}^h = 0$ . Therefore there are at least two grid points in each subdomain where the minimum value is reached. We can then follow the reasoning of one of the two last paragraphs.

We have proven that if  $A_h v$  is non-negative, then  $v$  is also non-negative. This property has two implications:

- $A_h$  is invertible. Indeed, let us assume that an array  $v$  is such that  $A_h v = 0$ . It means that both  $A_h v$  and  $A_h(-v)$  are non-negative. Consequently, we have  $v \geq 0$  and  $-v \geq 0$ , thus  $v = 0$ .
- All values of  $A_h^{-1}$  are non-negative. Indeed, the property is equivalent to say that, for any  $y$  non-negative, we have also  $A_h^{-1} y$  non-negative, which exactly means that all values of  $A_h^{-1}$  are non-negative.

### 3.2 Notations and reminder of the method of Ciarlet

In the following, the letters  $P$  and  $Q$  represent either discretization points (on the grid or on the interface) or their indices in the global numerotation of the matrix. For instance, we denote  $u(P)$  the coefficient of the row of  $u$  with the same index than the point  $P$ . Similarly,  $A_h U(P)$  represents the coefficient of the  $P$ -th row of the array  $A_h U$ , and  $A_h(P, Q)$  is the coefficient of the  $P$ -th row and  $Q$ -th column of the matrix  $A_h$ . We also define respectively by  $A_h(:, Q)$  and  $A_h(P, :)$  the  $Q$ -th column and the  $P$ -th row of the matrix  $A_h$ .

For each  $Q \in \Omega_h \cup \Sigma_h$ , define the discrete Green's function  $G_h(:, Q) = \left( G_h(P, Q) \right)_{P \in \Omega_h \cup \Sigma_h}$  as the solution of the discrete problem:

$$\begin{cases} A_h G_h(:, Q)(P) = \begin{cases} 0, & P \neq Q \\ 1, & P = Q \end{cases} & P \in \Omega_h \cup \Sigma_h, \\ G_h(P, Q) = 0, & P \in \delta\Omega_h. \end{cases} \quad (12)$$

The matrix  $A_h$  being monotone, all values of  $G_h(\cdot, Q)$  are positive. We can write the solution of the numerical problem as a sum of the source terms multiplied by the values of the discrete Green function:

$$u_h(P) = \sum_{Q \in \Omega_h \cup \Sigma_h} G_h(P, Q) (A_h u_h)(Q), \quad \forall P \in \Omega_h \cup \Sigma_h.$$

Now we present the result of [7], based on a discrete maximum principle, slightly modified to be adapted to our discretization matrix.

**Lemma 1.** *Let  $S$  be a subset of points,  $W$  a discrete function with  $W \equiv 0$  on  $\delta\Omega_h$ , and  $\alpha > 0$  such that:*

$$\begin{cases} (A_h W)(P) \geq 0 & \forall P \in \Omega_h \cup \Sigma_h, \\ (A_h W)(P) \geq \alpha^{-i} & \forall P \in S. \end{cases}$$

Then

$$\sum_{Q \in S} G_h(P, Q) \leq \alpha^i W(P), \quad \forall P \in \Omega_h \cup \Sigma_h.$$

*Proof:*

Using the definition of the discrete Green function, we can write

$$\left( A_h \sum_{Q \in S} G_h(\cdot, Q) \right) (P) = \begin{cases} 1 & \text{if } P \notin S, \\ 0 & \text{if } P \in S. \end{cases}$$

Therefore,

$$A_h \left( W - \alpha^{-i} \sum_{Q \in S} G_h(\cdot, Q) \right) (P) \geq 0, \quad \forall P \in \Omega_h \cup \Sigma_h.$$

As all coefficients of the inverse of  $A_h$  are non-negative, it leads to

$$W(P) - \alpha^{-i} \sum_{Q \in S} G_h(P, Q) \geq 0, \quad \forall P \in \Omega_h \cup \Sigma_h,$$

and finally we obtain an estimate of  $\sum_{Q \in S} G_h(\cdot, Q)$  in terms of the coefficients of  $W$ :

$$\sum_{Q \in S} G_h(P, Q) \leq \alpha^i W(P), \quad \forall P \in \Omega_h \cup \Sigma_h. \quad \blacksquare$$

This result can be generalized to several subsets, with both positive and negative lower bounds:

**Lemma 2.** *Let  $S$  and  $\tilde{S}$  be two subsets of points,  $W$  a discrete function with  $W \equiv 0$  on  $\delta\Omega_h$ , and  $\alpha > 0$ ,  $\beta > 0$  such that:*

$$\begin{cases} (A_h W)(P) \geq 0, & \forall P \in \Omega_h \cup \Sigma_h \setminus \tilde{S}, \\ (A_h W)(P) \geq \alpha^{-i}, & \forall P \in S, \\ (A_h W)(P) \geq -(\beta^{-j}), & \forall P \in \tilde{S}. \end{cases}$$

Then

$$\sum_{Q \in S} G_h(P, Q) \leq \alpha^i W(P) + \alpha^i \beta^{-j} \sum_{Q \in \tilde{S}} G_h(P, Q), \quad \forall P \in \Omega_h \cup \Sigma_h.$$

*Proof:*

Using the definition of the discrete Green function, we can write

$$A_h W(P) \geq A_h \left( \alpha^{-i} \sum_{Q \in \mathcal{S}} G_h(:, Q) - \beta^{-j} \sum_{Q \in \mathcal{S}^*} G_h(:, Q) \right) (P), \quad \forall P \in \Omega_h \cup \Sigma_h.$$

$$A_h \left( W - \alpha^{-i} \sum_{Q \in \mathcal{S}} G_h(:, Q) + \beta^{-j} \sum_{Q \in \mathcal{S}^*} G_h(:, Q) \right) (P) \geq 0, \quad \forall P \in \Omega_h \cup \Sigma_h.$$

As all coefficients of the inverse of  $A_h$  are non-negative, it leads to

$$W(P) - \alpha^{-i} \sum_{Q \in \mathcal{S}} G_h(P, Q) + \beta^{-j} \sum_{Q \in \mathcal{S}^*} G_h(P, Q) \geq 0, \quad \forall P \in \Omega_h \cup \Sigma_h,$$

and finally we obtain the following bound:

$$\sum_{Q \in \mathcal{S}} G_h(P, Q) \leq \alpha^i W(P) + \alpha^i \beta^{-j} \sum_{Q \in \mathcal{S}^*} G_h(P, Q), \quad \forall P \in \Omega_h \cup \Sigma_h.$$

■

### 3.3 Convergence proof

Here we first obtain linear relationships between the sums of the coefficients of the blocks of the inverse matrix corresponding to  $\Omega_h$ ,  $\Omega_h^*$ ,  $\Omega_h^\delta$  and  $\Sigma_h$ . Then we combine these relationships to obtain the desired estimates.

#### 3.3.1 Coupled estimates for grid points and interface points

- We define the function  $f$  as:

$$f(x, y) = A - e^{-\varphi(x, y)},$$

with  $\varphi$  the level-set function defined as the signed distance to the interface, negative in  $\Omega_2$  and positive in  $\Omega_1$ . We choose  $A$  such that

$$f(x, y) \geq 0, \quad \forall (x, y) \in \Omega.$$

Because of (5), the function  $f$  satisfies:

$$\partial_n f(x, y) = e^{-\varphi(x, y)} \underbrace{(\partial_x \varphi n_x + \partial_y \varphi n_y)}_{=1}, \quad \forall (x, y) \in \Sigma.$$

Therefore:

$$k_2 \partial_n f(x, y) - k_1 \partial_n f(x, y) \geq (k_2 - k_1) e^{-\|\varphi\|_\infty}, \quad \forall (x, y) \in \Sigma.$$

We denote by  $B(x_M, y_M, \eta)$  the sphere of center  $M = (x_M, y_M)$  and radius  $\eta$ . Because the interface  $\Sigma$  is smooth and  $f$  is smooth near  $\Sigma$ , there exists a positive real  $\eta$  such that for each point  $M$  belonging to  $\Sigma$ , and for all  $(x, y) \in B(x_M, y_M, \eta)$ ,

$$\begin{aligned} k_2 \partial_n f(x, y) - k_1 \partial_n f(x, y) &\geq \frac{1}{2} \left( k_2 \partial_n f(x_M, y_M) - k_1 \partial_n f(x_M, y_M) \right), \\ &\geq \frac{1}{2} (k_2 - k_1) e^{-\|\varphi\|_\infty}. \end{aligned} \tag{13}$$



We consider the following function, positive and infinitely differentiable with compact support:

$$g(x,y) = \begin{cases} \exp\left(-\frac{1}{1-r^2}\right) & \text{if } r^2 \leq 1, \quad \text{with } r^2 = \frac{x^2+y^2}{\eta^2}, \\ 0 & \text{elsewhere.} \end{cases} \quad (14)$$

We define the function  $F$  as

$$F(x,y) = \int_{\mathbb{R}^2} g(x-s, y-t) f(s,t) ds dt.$$

If we apply the discrete elliptic operator (9) to  $F$  we get in the case of a regular point  $M_{i,j}$ :

$$\begin{aligned} -\left(\nabla \cdot (k\nabla F)\right)_{i,j}^h &= \frac{k}{h^2} \left(4F(x_i, y_j) - F(x_i+h, y_j) - F(x_i-h, y_j) - F(x_i, y_j+h) - F(x_i, y_j-h)\right), \\ &= \int_{\mathbb{R}^2} \left(-\nabla \cdot (k\nabla g)\right)^h(x_i-s, y_i-t) f(s,t) ds dt. \end{aligned}$$

The notation  $\left(-\nabla \cdot (k\nabla g)\right)^h(x_i-s, y_i-t)$  denotes a discretization similar to  $\left(-\nabla \cdot (k\nabla g)\right)_{i,j}^h$ , but shifted from  $M_{i,j}$  to  $(x_i-s, y_i-t)$ . A similar formula would be obtained in the case of an irregular grid point. The term  $\left(-\nabla \cdot (k\nabla g)\right)^h$  is consistent with  $-\nabla \cdot (k\nabla g)$  at first or second-order, depending if we consider a regular or irregular grid point, therefore there exists a positive constant  $C_1$  depending only on  $f, g, k$  and  $\Omega$ , such that

$$-\left(\nabla \cdot (k\nabla F)\right)_{i,j}^h \geq -C_1, \quad \forall M_{i,j} \in \Omega_h.$$

Moreover, with a simple change of variables,

$$F(x+h, y) = \int_{\mathbb{R}^2} g(x+h-s, y-t) f(s,t) ds dt = \int_{\mathbb{R}^2} g(x-s, y-t) f(s+h, t) ds dt.$$

We apply the same treatment on every term appearing in the discretization of the jump of fluxes at the interface and obtain for instance on the interface point  $I_{i+1/2,j}$ :

$$\begin{aligned} k_2(\partial_n F^2)_{i+1/2,j}^h - k_1(\partial_n F^1)_{i+1/2,j}^h &= \int_{\mathbb{R}^2} g(x_{i+1/2}-s, y_j-t) \left(k_2(\partial_n f^2)^h - k_1(\partial_n f^1)^h\right)(s,t) ds dt, \\ &= \int_{B(x_{i+1/2}, y_j, \eta)} g(x_{i+1/2}-s, y_j-t) \left(k_2(\partial_n f^2)^h - k_1(\partial_n f^1)^h\right)(s,t) ds dt. \end{aligned}$$

The notation  $\left(k_2(\partial_n f^2)^h - k_1(\partial_n f^1)^h\right)(s,t)$  denotes a discretization similar to  $k_2(\partial_n f^2)_{i+1/2,j}^h - k_1(\partial_n f^1)_{i+1/2,j}^h$ , but shifted from  $I_{i+1/2,j}$  to  $(s,t)$ . Therefore, because of the definition of  $g$  and  $\eta$  and the relationship (13), and because the discretization of fluxes is consistent and  $f$  is smooth across the interface, we can write for  $h$  small enough:

$$k_2(\partial_n F^2)_{i+1/2,j}^h - k_1(\partial_n F^1)_{i+1/2,j}^h \geq \underbrace{\frac{1}{4}(k_2 - k_1)e^{-\|\varphi\|_\infty} \int_{B(x_{i+1/2}, y_j, \eta)} g(x-s, y-t) ds dt}_{=C_2} > 0.$$

To sum up the previous lines, if we denote  $W$  the array of the values of  $F$  discretized on the grid and interface points, with  $W \equiv 0$  on  $\delta\Omega_h$ , there exists two strictly positive constants,  $C_1$  and  $C_2$

depending only on  $f, g, k$  and  $\Omega$ , such that

$$\begin{aligned} (A_h W)(P) &\geq -C_1, \quad \forall P \in \Omega_h, \\ (A_h W)(P) &\geq C_2, \quad \forall P \in \Sigma_h. \end{aligned}$$

Using lemma (2), it means that

$$\sum_{Q \in \Sigma_h} G_h(:, Q) \leq \frac{W}{C_2} + \frac{C_1}{C_2} \sum_{Q \in \Omega_h} G_h(:, Q). \quad (15)$$

- Now we consider the exact solution  $\bar{u}$  of system (1)-(3), with  $f = 1, \alpha = \beta = 0$  and  $u = 0$  on  $\delta\Omega$ . We assume that  $\Omega$  and  $\Gamma$  are smooth enough so that  $\bar{u}$  exists and is smooth enough for our analysis. We define the array  $\bar{W}$  as the discretisation of  $\bar{u}$  on the grid and interface points, with  $\bar{W} \equiv 0$  on  $\delta\Omega_h$ . The discretization of the elliptic operator and the fluxes is consistent at least with first-order accuracy, thus for  $h$  small enough, we can write that

$$\begin{aligned} -\left(\nabla \cdot (k \nabla \bar{W})\right)_{i,j}^h &\geq \frac{1}{2}, \quad \forall M_{i,j} \in \Omega_h, \\ k_2 (\partial_n \bar{W}^2)_{i+1/2,j}^h - k_1 (\partial_n \bar{W}^1)_{i+1/2,j}^h &= O(h), \quad \forall I_{i+1/2,j} \in \Sigma_h, \\ k_2 (\partial_n \bar{W}^2)_{i,j+1/2}^h - k_1 (\partial_n \bar{W}^1)_{i,j+1/2}^h &= O(h), \quad \forall I_{i,j+1/2} \in \Sigma_h. \end{aligned}$$

Therefore, there exists two strictly positive constants,  $C_3$  and  $C_4$  depending only on  $f, g, k$  and  $\Omega$ , such that

$$\begin{aligned} (A_h \bar{W})(P) &\geq C_3, \quad \forall P \in \Omega_h, \\ (A_h \bar{W})(P) &\geq -C_4 h, \quad \forall P \in \Sigma_h, \end{aligned}$$

and using lemma (2), it leads to:

$$\sum_{Q \in \Omega_h} G_h(:, Q) \leq \frac{\bar{W}}{C_3} + \frac{C_4}{C_3} h \sum_{Q \in \Sigma_h} G_h(:, Q). \quad (16)$$

Putting together (15) and (16) yields

$$\sum_{Q \in \Sigma_h} G_h(:, Q) \leq \frac{W}{C_2} + \frac{C_1}{C_2 C_3} \left( \bar{W} + C_4 h \sum_{Q \in \Sigma_h} G_h(:, Q) \right)$$

Therefore, for  $h$  small enough, we obtain:

$$\sum_{Q \in \Sigma_h} G_h(:, Q) \leq O(1), \quad (17)$$

$$\sum_{Q \in \Omega_h} G_h(:, Q) \leq O(1). \quad (18)$$

### 3.3.2 Coupled estimates for grid points in $\Omega_h^\delta$ and $\Omega_h^*$

- Let  $P = M_{i_0, j_0}$  be a grid point belonging to  $\Omega_h^\delta$ . We consider the fonction

$$\tilde{F}_P(x, y) = \ln\left(\frac{C}{r_P(x, y)}\right),$$

with  $r_P(x, y) = \sqrt{(x - x_{i_0})^2 + (y - y_{j_0})^2 + h^2}$ , and  $C$  such that  $\tilde{F}_P(x, y) > 0$  for all  $(x, y) \in \Omega$ .

Without loss of generality, we assume in the following that  $x_{i_0} = y_{j_0} = 0$ . We can prove that for every regular grid point  $M_{i,j}$

$$-\left(\nabla \cdot (k \nabla \tilde{F}_P)\right)_{i,j}^h \geq 0, \quad (19)$$

and in particular, for the point  $P$  itself,

$$-\left(\nabla \cdot (k \nabla \tilde{F}_P)\right)_{i_0, j_0}^h \geq \frac{C_5}{h^2}, \quad (20)$$

with  $C_5$  a strictly positive constant.

*Proof:* On a regular grid point we can write:

$$\begin{aligned} -\left(\nabla \cdot (k \nabla \tilde{F}_P)\right)_{i,j}^h &= \frac{k}{h^2} \ln \left( \frac{r_{i-1,j} r_{i+1,j} r_{i,j-1} r_{i,j+1}}{r_{i,j}^4} \right), \\ &= \frac{k}{2h^2} \ln \left( \frac{\left[ (x_i + h)^2 + y_j^2 + h^2 \right] \left[ (x_i - h)^2 + y_j^2 + h^2 \right] \left[ x_i^2 + (y_j + h)^2 + h^2 \right] \left[ x_i^2 + (y_j - h)^2 + h^2 \right]}{(x_i^2 + y_j^2 + h^2)^4} \right). \end{aligned}$$

Moreover,

$$\begin{aligned} \left[ (x_i + h)^2 + y_j^2 + h^2 \right] \left[ (x_i - h)^2 + y_j^2 + h^2 \right] &= (x_i^2 + y_j^2 + h^2)^2 + 3h^4 - 2h^2 x_i^2 + 2h^2 y_j^2, \\ \left[ x_i^2 + (y_j + h)^2 + h^2 \right] \left[ x_i^2 + (y_j - h)^2 + h^2 \right] &= (x_i^2 + y_j^2 + h^2)^2 + 3h^4 - 2h^2 y_j^2 + 2h^2 x_i^2. \end{aligned}$$

Therefore

$$r_{i-1,j} r_{i+1,j} r_{i,j-1} r_{i,j+1} = [(x_i^2 + y_j^2 + h^2)^2 + 3h^4]^2 - 4h^4(x_i^2 - y_j^2)^2.$$

We develop the term and remark that

$$\left[ (x^2 + y^2 + h^2)^2 + 3h^4 \right]^2 - 4h^4(x^2 - y^2)^2 \geq (x^2 + y^2 + h^2)^4,$$

which gives us (19). The relationship (20) is directly obtained by using  $x_i = y_j = 0$  in the first formula of the proof.  $\blacksquare$

The interface is at a distance bounded independently of  $h$  from the considered point  $P$ , therefore the function  $\tilde{F}_P$  is  $C^2$  with derivatives bounded independently of  $h$  on irregular grid points and interface points. Thus one can prove with Taylor expansions that there exists strictly positive constants  $C_6$  and  $C_7$  such that

$$-\left(\nabla \cdot (k \nabla \tilde{F}_P)\right)_{i,j}^h \geq -C_6, \quad \forall M_{i,j} \in \Omega_h^*, \quad (21)$$

$$k_2(\partial_n \tilde{F}_P^2)_{i+1/2,j}^h - k_1(\partial_n \tilde{F}_P^1)_{i+1/2,j}^h \geq -C_7, \quad \forall I_{i+1/2,j} \in \Sigma_h, \quad (22)$$

$$k_2(\partial_n \tilde{F}_P^2)_{i,j+1/2}^h - k_1(\partial_n \tilde{F}_P^1)_{i,j+1/2}^h \geq -C_7, \quad \forall I_{i,j+1/2} \in \Sigma_h. \quad (23)$$

To sum up the previous lines, if we denote  $\tilde{W}_P$  the array of the values of  $\tilde{F}_P$  discretized on the grid and interface points, with  $\tilde{W}_P \equiv 0$  on  $\delta\Omega_h$ , there exists three strictly positive constants,  $C_5$ ,  $C_6$  and

$C_7$ , such that

$$\begin{aligned} (A_h \tilde{W}_P)(Q) &\geq 0, \quad \forall Q \in \Omega_h \setminus \Omega_h^* \\ (A_h \tilde{W}_P)(P) &\geq \frac{C_5}{h^2}, \\ (A_h \tilde{W}_P)(Q) &\geq -C_6 \quad \forall Q \in \Omega_h^*, \\ (A_h \tilde{W}_P)(Q) &\geq -C_7 \quad \forall Q \in \Sigma_h, \end{aligned}$$

Therefore we obtain

$$G_h(\cdot, P) \leq \frac{h^2}{C_5} \tilde{W}_P(\cdot) + h^2 \frac{C_7}{C_5} \sum_{Q \in \Sigma_h} G_h(\cdot, Q) + h^2 \frac{C_6}{C_5} \sum_{Q \in \Omega_h^*} G_h(\cdot, Q). \quad (24)$$

We want to sum this relationship for all points  $P$  belonging to  $\Omega_h^\delta$ . Let us denote  $N_\Omega = \lceil \frac{\text{diam}(\Omega)}{h} \rceil$ . Because  $\Omega_h^\delta$  has dimension 1, there exists an integer  $M > 0$  independent of  $h$ , such that for each  $i$  between 1 and  $N_\Omega$  and for each node  $Q$ , the number of points  $P$  belonging to  $\Omega_h^\delta$  such that  $ih \leq r_P(Q) \leq (i+1)h$  is bounded by  $M$ .

Consequently, for all  $Q \in \Omega_h$ ,

$$\begin{aligned} \sum_{P \in \Omega_h^\delta} \tilde{W}_P(Q) &= \sum_{P \in \Omega_h^\delta} \ln\left(\frac{C}{r_P(Q)}\right) \\ &\leq M \sum_{i=1}^{N_\Omega} \ln\left(\frac{C}{ih}\right) \\ &\leq \underbrace{\frac{M}{h} \sum_{i=1}^{N_\Omega} \int_{(i-1)h}^{ih} \ln\left(\frac{C}{x}\right) dx}_{=O(1)} = O\left(\frac{1}{h}\right). \end{aligned}$$

Therefore, if we sum the inequality (24) on all points in  $\Omega_h^\delta$  and use the estimate (18) for  $\Sigma_h$ , we obtain

$$\begin{aligned} \sum_{P \in \Omega_h^\delta} G_h(\cdot, P) &\leq O(h) + O(h) \sum_{Q \in \Sigma_h} G_h(\cdot, Q) + O(h) \sum_{Q \in \Omega_h^*} G_h(\cdot, Q), \\ \sum_{P \in \Omega_h^\delta} G_h(\cdot, P) &\leq O(h) + O(h) \sum_{Q \in \Omega_h^*} G_h(\cdot, Q). \end{aligned} \quad (25)$$

- We define the function  $\check{f}$  by :

$$\check{f}(x, y) = \begin{cases} B & \text{if } |\varphi(x, y)| \leq h/2, \\ B - e^{A(|\varphi(x, y)| - h/2)} & \text{if } h/2 \leq |\varphi(x, y)| \leq \delta, \\ B - e^{A(\delta - h/2)} & \text{if } \delta \leq |\varphi(x, y)|, \end{cases}$$

with  $\varphi$  the signed distance to the interface, negative in  $\Omega_2$  and positive in  $\Omega_1$ . This function is Lipschitz-continuous on the whole domain. It is also twice differentiable with bounded derivatives, excepted on the isolines of the level-set function  $\varphi = -\delta, -h/2, h/2, \delta$ .

The function  $\check{f}$  satisfies for all  $(x, y)$  such that  $h/2 < |\varphi(x, y)| < \delta$ :

$$-\left(\nabla \cdot (k \nabla \check{f})\right)(x, y) = k \left[ A^2 \underbrace{\left( (\partial_x \varphi)^2 + (\partial_y \varphi)^2 \right)}_{=1} \pm A \nabla \cdot (\nabla \varphi)(x, y) \right] e^{A(|\varphi(x, y)| - h/2)},$$

because  $\varphi$  is the signed distance function. We choose  $A$  and  $B$  such that:

$$kA^2 \pm A \nabla \cdot (k \nabla \varphi)(x, y) \geq 1, \forall (x, y) \text{ with } |\varphi(x, y)| \leq \delta,$$

and  $B$  such that

$$\check{f}(x, y) \geq 0, \quad (x, y) \in \Omega.$$

Therefore, for all regular grid points  $M_{i,j}$  not belonging to  $\Omega_h^\delta$ , with  $|\varphi(x_i, y_j)| < \delta$ , we have:

$$-\left(\nabla \cdot (k \nabla \check{f})\right)_{i,j}^h \geq 0. \quad (26)$$

On the other side, for all regular grid points  $M_{i,j}$  not belonging to  $\Omega_h^\delta$ , with  $|\varphi(x_i, y_j)| > \delta$ , the function  $\check{f}$  is constant, thus we have

$$-\left(\nabla \cdot (k \nabla \check{f})\right)_{i,j}^h = 0. \quad (27)$$

The function  $\varphi$  is Lipschitz continuous on grid points in  $\Omega_h^\delta$ , so there exists a strictly positive constant  $C_8$  such that

$$-\left(\nabla \cdot (k \nabla \check{f})\right)_{i,j}^h \geq -\frac{C_8}{h}, \quad \forall M_{i,j} \in \Omega_h^\delta. \quad (28)$$

On irregular grid points, there is a discontinuity in the first derivative of  $\check{f}$  on isolines  $|\varphi| = h/2$ . As a consequence, there exists a strictly positive constant  $C_9$  such that

$$-\left(\nabla \cdot (k \nabla \check{f})\right)_{i,j}^h \geq \frac{C_9}{h}, \quad \forall M_{i,j} \in \Omega_h^*.$$

Finally, the discrete normal derivative computed with  $\check{f}$  is positive for the formula with points in  $\Omega_2$ , and negative for points in  $\Omega_1$ , therefore

$$k_2 (\partial_n \check{f}^2)_{i+1/2,j}^h - k_1 (\partial_n \check{f}^1)_{i+1/2,j}^h \geq 0, \quad \forall I_{i+1/2,j} \in \Sigma_h, \quad (30)$$

$$k_2 (\partial_n \check{f}^2)_{i,j+1/2}^h - k_1 (\partial_n \check{f}^1)_{i,j+1/2}^h \geq 0, \quad \forall I_{i,j+1/2} \in \Sigma_h. \quad (31)$$

Therefore, if we denote  $\check{W}$  the array of the values of  $\check{f}$  discretized on the grid and interface points, with  $\check{W} \equiv 0$  on  $\delta\Omega_h$ , there exists strictly positive constants  $C_8$  and  $C_9$  such that

$$(A_h \check{W}_P)(Q) \geq 0, \quad \forall Q \in \Omega_h \setminus \Omega_h^\delta$$

$$(A_h \check{W}_P)(Q) \geq -\frac{C_8}{h}, \quad \forall Q \in \Omega_h^\delta$$

$$(A_h \check{W}_P)(Q) \geq \frac{C_9}{h} \quad \forall Q \in \Omega_h^*,$$

$$(A_h \check{W}_P)(Q) \geq 0 \quad \forall Q \in \Sigma_h,$$

and we conclude that

$$\sum_{Q \in \Omega_h^*} G_h(\cdot, Q) \leq \frac{C_8}{C_9} \sum_{Q \in \Omega_h^\delta} G_h(\cdot, Q) + \frac{h}{C_9} \check{W}(\cdot). \quad (32)$$

Putting together (25) and (32) we obtain

$$\sum_{Q \in \Omega_h^*} G_h(\cdot, Q) \leq \frac{C_8}{C_9} \left( O(h) + O(h) \sum_{Q \in \Omega_h^*} G_h(\cdot, Q) \right) + \frac{h}{C_9} \check{W}(\cdot).$$

Therefore, for  $h$  small enough, we obtain:

$$\sum_{Q \in \Omega_h^*} G_h(\cdot, Q) \leq O(h). \quad (33)$$

### 3.3.3 Convergence result

Finally, we obtain an estimate of the local error on every point  $P$  in  $\Omega_h \cup \Sigma_h$ , with  $\bar{u}$  the exact solution:

$$\begin{aligned} |\bar{u}(P) - u_h(P)| &= \left| \sum_{Q \in \Omega_h \cup \Sigma_h} G_h(P, Q) \tau(Q) \right|, \\ &\leq \left| \sum_{Q \in \Omega_h^*} G_h(P, Q) \tau(Q) \right| + \left| \sum_{Q \in \Omega_h \setminus \Omega_h^*} G_h(P, Q) \tau(Q) \right| + \left| \sum_{Q \in \Sigma_h} G_h(P, Q) \tau(Q) \right|, \\ &\leq O(h) \left| \sum_{Q \in \Omega_h^*} G_h(P, Q) \right| + O(h^2) \left| \sum_{Q \in \Omega_h \setminus \Omega_h^*} G_h(P, Q) \right| + O(h) \left| \sum_{Q \in \Sigma_h} G_h(P, Q) \right|, \\ &\leq O(h)O(h) + O(h^2)O(1) + O(h)O(1) = O(h). \end{aligned}$$

which proves that the numerical solution converges with first-order accuracy to the exact solution in  $L^\infty$ -norm.

## 4 Convergence proof for the one-dimensional case

### 4.1 Monotonicity of the discretization matrix

Here we aim to prove that  $A_h$  is monotone in spite of the fact that the matrix  $A_h$  is not diagonally-dominant in the second-order version, due to the discretization terms near the interface. Let  $\mathbf{v}$  be an array of size  $N + N_{int}$  corresponding to  $N$  grid points and  $N_{int}$  interface unknowns such that  $A_h \mathbf{v} \geq 0$ . We prove that, if the minimum of  $\mathbf{v}$  is located on an interface point  $x_{int} = x_{k+1/2}$  then, with the notations and orientation of the normal defined on Figure 3 then the left normal derivative at this interface point is negative and the right normal derivative at this interface point is positive. Once we have proven this property, the proof of monotonicity of the matrix is exactly the same as in two dimensions, so we do not re-write it. We use the notations defined on Figure 3.

Let us assume that the minimum of  $\mathbf{v}$  is located on an interface point. The left normal derivative at  $x_{int}$  is discretized by

$$(\partial_n v^2)_{k+1/2}^h = \frac{3-2d}{(1-d)(2-d)h} (v_{k+1/2} - v_k) - \frac{1-d}{(2-d)h} (v_k - v_{k-1}).$$

By hypothesis  $A_h \mathbf{v} \geq 0$  hence

$$-\left( \frac{v_{k+1/2} - v_k}{(1-d)h} - \frac{v_k - v_{k-1}}{h} \right) \geq 0,$$

therefore

$$(\partial_n v^2)_{k+1/2}^h \leq \frac{2-d}{(1-d)(2-d)h} (v_{k+1/2} - v_k) \leq 0.$$

Moreover, if one can prove that the normal derivative is zero, with the last inequality we can deduce that  $v_k = v_{k+1/2}$ . Similarly, the right normal derivative at  $x_{k+1/2}$  is discretized by

$$(\partial_n v^1)_{k+1/2}^h = \frac{1+2d}{d(d+1)h} (v_{k+1} - v_{k+1/2}) - \frac{d}{(1+d)h} (v_{k+2} - v_{k+1}).$$

By hypothesis  $A_h \mathbf{v} \geq 0$  hence

$$-\left( \frac{v_{k+2} - v_{k+1}}{h} - \frac{v_{k+1} - v_{k+1/2}}{dh} \right) \geq 0,$$

therefore

$$(\partial_n v^1)_{k+1/2}^h \geq \frac{1+d}{d(d+1)h} (v_{k+1} - v_{k+1/2}) \geq 0.$$

Again, if the normal derivative is zero, then  $v_{k+1} = v_{k+1/2}$ .

## 4.2 Second-order convergence

With exactly the same reasoning than in subsection 3.3 we can prove the estimates (17), (18) and (25). We use them to obtain an estimate of the local error on every point  $P$  in  $\Omega_h \cup \Sigma_h$ :

$$\begin{aligned} |\bar{u}(P) - u_h(P)| &= \left| \sum_{Q \in \Omega_h \cup \Sigma_h} G_h(P, Q) \tau(Q) \right|, \\ &\leq \left| \sum_{Q \in \Omega_h^*} G_h(P, Q) \tau(Q) \right| + \left| \sum_{Q \in \Omega_h \setminus \Omega_h^*} G_h(P, Q) \tau(Q) \right| + \left| \sum_{Q \in \Sigma_h} G_h(P, Q) \tau(Q) \right|, \\ &\leq O(h) \left| \sum_{Q \in \Omega_h^*} G_h(P, Q) \right| + O(h^2) \left| \sum_{Q \in \Omega_h \setminus \Omega_h^*} G_h(P, Q) \right| + O(h^2) \left| \sum_{Q \in \Sigma_h} G_h(P, Q) \right|, \\ &\leq O(h)O(h) + O(h^2)O(1) + O(h^2)O(1) = O(h^2). \end{aligned}$$

which proves that the numerical solution converges with second-order accuracy to the exact solution in  $L^\infty$ -norm.

## 5 Discussion

Numerous numerical methods have been developed for solving the problem (1) - (3), leading to various orders of accuracy for the convergence:

- the pioneering work of Mayo in 1984 [23], where an integral equation was derived to solve elliptic interface problems with piecewise coefficients to second order accuracy in maximum norm,
- the very well known Immersed Interface Method (IIM) LeVeque and Li (1994) [17] (second order accurate in maximum norm), and its developments, among them: the fast IIM algorithm of Li [18] for elliptic problems with piecewise constant coefficients, the Explicit Jump Immersed Interface Method (EJIIM) by Wiegmann and Bube [28], the Decomposed Immersed Interface Method (DIIM) by Bethelsen [2], and the MIIM (maximum principle preserving) by Li and Ito [19].

- the Matched Interface and Boundary (MIB) method [31], [30], [29], introduced by Zhou *et al.* : the solution on each side of the interface is extended on fictitious points on the other side. These fictitious values are computed by iteratively enforcing the lowest order interface jump conditions. This method can provide finite-difference schemes of arbitrary high order.
- the Coupling Interface Method, proposed by Chern and Shu [6], where the discretizations on each subdomain are coupled through a dimension by dimension approach using the jump conditions.

All the methods cited above are second order accurate. Other classes of Cartesian methods also exist, only first order accurate for interface problems in the case of interface problems, but simpler to implement: Gibou *et al.* ([10], [11]). Recently, Guittet *et al.* proposed in [13] to add degrees of freedom close to the interface and use a Voronoi partition centered at each of these points to discretize the equations in a finite volume approach. Doing so, they obtain a symmetric positive definite linear system, and a second-order convergence of the solution.

Concerning the discretization requirements needed to get a second-order spatial convergence, it has been noted since the introduction of Cartesian grid methods that a  $O(h)$  truncation error at the points near the interface is enough to get a  $O(h^2)$  convergence in maximum norm if the discretization is second-order on the regular grid points. However, in the literature, only few works have been devoted to the study of the second-order convergence of Cartesian grid methods for interface problems. For one-dimensional methods, Huang and Li performed in [14] a convergence analysis of the IIM, using non-negative comparison functions, and in [28] Wiegmann and Bube presented a proof of convergence for one-dimensional problems with piecewise constant coefficients, using a detailed analysis and identification of the coefficients of the matrices involved. In [15], a convergence proof was established in one-dimension for a variant of the method studied in this paper, applied in the context of electroporomeabilization models. But this proof was based on a row by row analysis of the discretisation matrix, in order to obtain estimates of the coefficients of the inverse matrix. This technique would not be tractable in two dimensions, due to its complexity. For two-dimensional methods, Beale and Layton [1] proved in two-dimensions the second-order convergence for piecewise constant diffusion coefficients, using the fact that a grid function located near the interface can be written as the divergence of a function smaller in norm, and Li and Ito proved in [19] the second-order convergence of their MIIM, using the maximum principle. The proof uses a technical condition related to the location of the interface with respect to the grid point that is not always satisfied. In this paper, the proof is also based on a discrete maximum principle, but its exact contents differs significantly from the proof in [19] because the discretization is not the same, notably due to the presence of interface unknowns, which makes the monotonicity of the matrix a crucial step in the proof, and lead to a different application of the discrete maximum principle.

This result can be considered as a step toward the convergence proof of the second-order method presented in [8]. In future works, we aim to adapt the ideas presented here to the original method itself. The crucial point being to prove that a discrete maximum principle can be applied to the discretization matrix, two options could be followed to this purpose:

- One could prove that the discretization matrix for the original second-order method is monotone. Because the discretization matrix is not diagonally dominant, one would probably need to combine adequately some elliptic inequalities for the nodes near the interface into the expression of the discrete normal derivative. It may also be necessary to modify the stencil of the flux, but still maintaining its second-order accuracy.
- One could also use the technique presented in [4], where non-monotone finite-difference methods are proven to satisfy a generalized local maximum principle, still leading to a convergence result.

Finally, we want to emphasize that the technique that we have used to obtain the bounds on the coefficients of the inverse matrix could also be used to prove the convergence of numerical methods



for other numerical methods for elliptic problems, for instance without singular source terms but with discontinuous diffusion coefficients. Indeed, to our knowledge, classical estimates of the discrete Green functions were obtained mainly for smooth coefficients  $k$ , like for instance in [3].

## 6 Numerical validation

In this section we only provide numerical results for the first-order method in two dimensions. Indeed, the second-order method has already been validated in two-dimensions in [8], and consequently there is no need to show it in one dimension here. The following numerical results are not meant to assess performances of the method or compare it to others methods of the literature, but simply to corroborate the analysis that we have performed.

In the following we consider a square domain  $\Omega$  consisting in the union of two subdomains  $\Omega_1$  and  $\Omega_2$  separated by an interface  $\Sigma$ . We impose exact Dirichlet boundary conditions on the outer boundary of  $\Omega$ .

### 6.1 Numerical study of the discrete Green functions

Here we study numerically the amplitude in  $L^\infty$ -norm, of the different sums of discrete Green functions estimated in subsections 3.3.1 and 3.3.2. We consider an elliptical interface  $\Sigma$  defined as:

$$\left(\frac{x}{18/27}\right)^2 + \left(\frac{y}{10/27}\right)^2 = 1.$$

The set of points  $\Omega_h^\delta$  is defined as the set of points whose stencil crosses the interface defined by

$$\left(\frac{x}{22.5/27}\right)^2 + \left(\frac{y}{12.5/27}\right)^2 = 1.$$

On Figures 6-9, we plot respectively the numerical values for  $\sum_{Q \in \Sigma_h} G_h(P, Q)$ ,  $\sum_{Q \in \Omega_h} G_h(P, Q)$ ,  $\sum_{Q \in \Omega_h^*} G_h(P, Q)$  and  $\sum_{Q \in \Omega_h^\delta} G_h(P, Q)$ . The amplitude in  $L^\infty$ -norm of these sums is presented on Table 1. We observe the same behaviour as the estimates (17), (18) and (33), namely a  $O(1)$  behaviour for  $\sum_{Q \in \Sigma_h} G_h(P, Q)$  and  $\sum_{Q \in \Omega_h} G_h(P, Q)$ , and a  $O(h)$  behaviour for  $\sum_{Q \in \Omega_h^*} G_h(P, Q)$  and  $\sum_{Q \in \Omega_h^\delta} G_h(P, Q)$ .

N	$\Sigma_h$	$\Omega_h$	$\Omega_h^*$	$\Omega_h^\delta$
50	$1.803 \times 10^{-1}$	$2.985 \times 10^{-1}$	$3.374 \times 10^{-2}$	$2.971 \times 10^{-2}$
100	$1.817 \times 10^{-1}$	$2.965 \times 10^{-1}$	$1.5642 \times 10^{-2}$	$1.509 \times 10^{-2}$
200	$1.818 \times 10^{-1}$	$2.957 \times 10^{-1}$	$8.371 \times 10^{-3}$	$7.481 \times 10^{-3}$
400	$1.820 \times 10^{-1}$	$2.952 \times 10^{-1}$	$4.164 \times 10^{-3}$	$3.740 \times 10^{-3}$

Table 1: Numerical amplitude of the different groups of discrete Green functions.

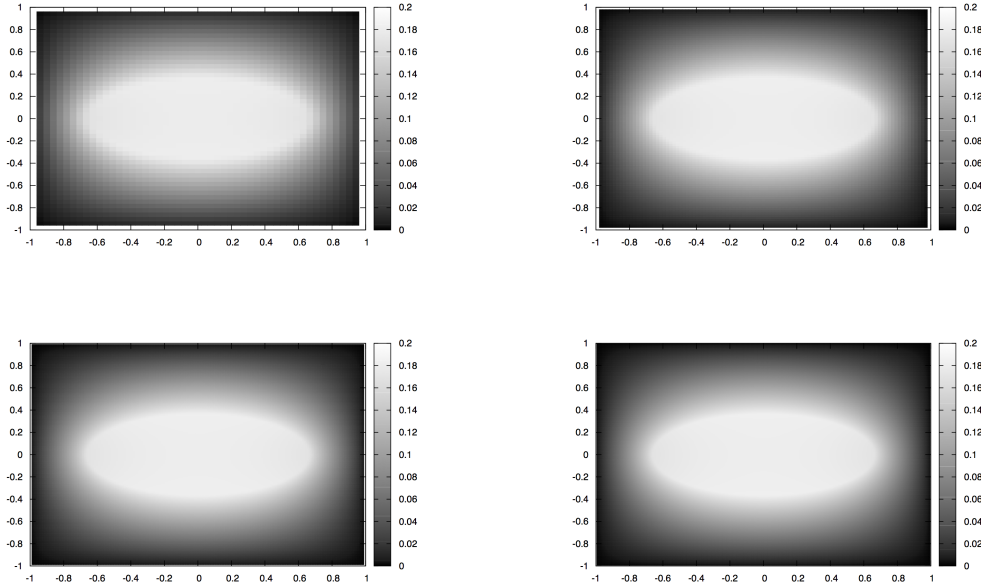


Figure 6: Discrete Green functions for  $\Sigma_h$ , from top to bottom and left to right  $N = 50, 100, 200, 400$ .

## 6.2 Problem 1

It is a test case appearing in [31] (MIB method, case 3 of the tests on irregular interfaces) and [6] (CIM, example 4). We consider an elliptical interface  $\Sigma$  defined as:

$$\left(\frac{x}{18/27}\right)^2 + \left(\frac{y}{10/27}\right)^2 = 1.$$

The exact solution is:

$$u(x,y) = \begin{cases} e^x \cos(y), & \text{inside } \Sigma, \\ 5e^{-x^2 - \frac{y^2}{2}} & \text{otherwise.} \end{cases}$$

We set the diffusion coefficient  $k = 1$  outside the interface, and  $k = 10$  inside the interface. We observe a first-order convergence, as presented in Table 2.

## 6.3 Problem 2

It is a test case studied in [20]. We consider an spherical interface  $\Sigma$  defined by  $r^2 = 1/4$  with  $r = \sqrt{x^2 + y^2}$ . The exact solution is:

$$u(x,y) = \begin{cases} e^x \cos(y) & \text{inside } \Sigma \\ 0 & \text{otherwise,} \end{cases}$$

The numerical results and orders of convergence are presented in Table 3. We observe again a first-order convergence.

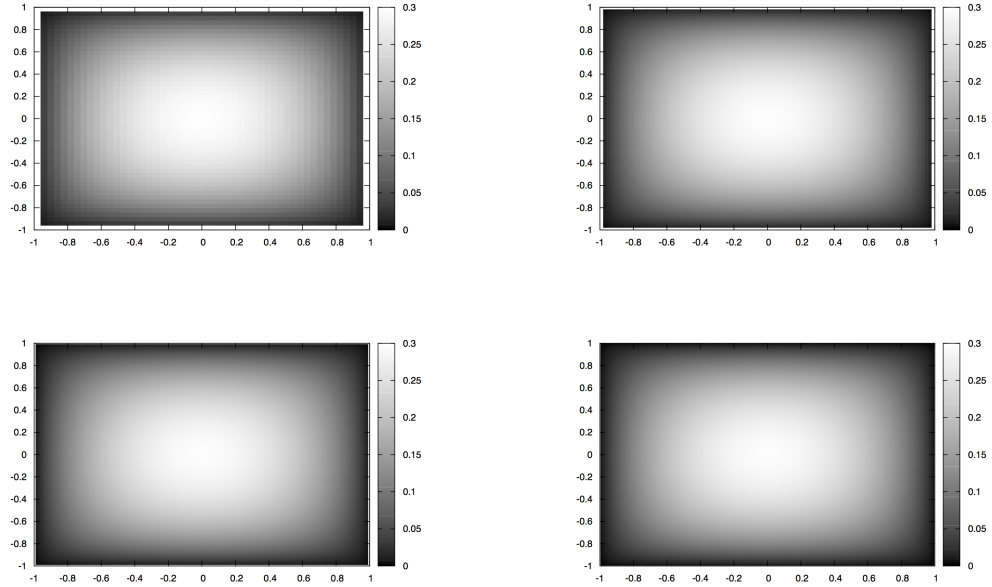


Figure 7: Discrete Green functions for  $\Omega_h$ , from top to bottom and left to right  $N = 50, 100, 200, 400$ .

## References

- [1] J. T. Beale and A. T. Layton. On the accuracy of finite difference methods for elliptic problems with interfaces. *Commun. Appl. Math. Comput. Sci.*, 1:91–119, 2006.
- [2] P. Bethelsen. A decomposed immersed interface method for variable coefficient elliptic equations with non-smooth and discontinuous solutions. *J. Comput. Phys.*, 197:364–386, 2004.
- [3] J. H. Bramble and V. Thomee. Pointwise bounds for discrete green’s functions. *SIAM J. Numer. Anal.*, 6(4):583–590, 1969.
- [4] A. Brandt. Generalized local maximum principles for finite-difference operators. *Mathematics of Computations*, 27:685–718, 1973.

N	$L^\infty$ error	order
20	$1.2497 \times 10^{-1}$	-
40	$5.83079213 \times 10^{-2}$	1.10
80	$3.0542764 \times 10^{-2}$	1.02
160	$1.3751638 \times 10^{-2}$	1.06
320	$7.12846725 \times 10^{-3}$	1.03

Table 2: Numericals results for Problem 1.

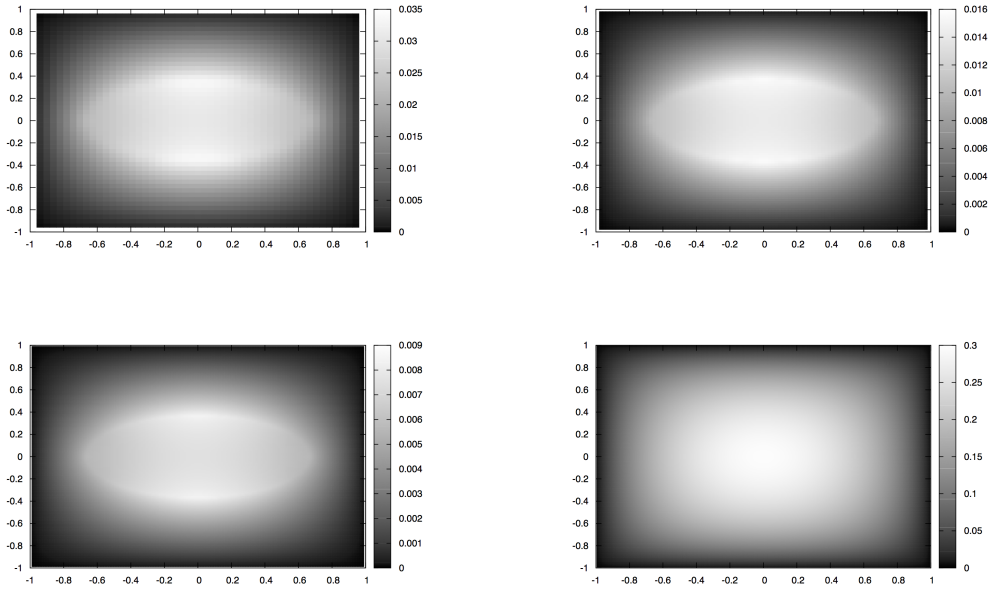


Figure 8: Discrete Green functions for  $\Omega_h^*$ , from top to bottom and left to right  $N = 50, 100, 200, 400$ .

[5] D. Bresch, T. Colin, E. Grenier, B. Ribba, and O. Saut. Computational modeling of solid tumor growth: the avascular stage. *SIAM J. Sci. Comput.*, 32:2321–2344, 2009.

[6] I. Chern and Y.-C. Shu. A coupling interface method for elliptic interface problems. *J. Comput. Phys.*, 225:2138–2174, 2007.

[7] P. G. Ciarlet. Discrete maximum principle for finite-difference operators. *aequationes mathematicae*, 4:338–352, 1970.

[8] M. Cisternino and L. Weynans. A parallel second order cartesian method for elliptic interface problems. *Commun. Comput. Phys.*, 12:1562–1587, 2012.

N	$L^\infty$ error	order
20	$4.9234 \times 10^{-3}$	-
40	$2.2717 \times 10^{-3}$	1.12
80	$1.0763 \times 10^{-3}$	1.10
160	$5.5813 \times 10^{-4}$	1.05
320	$2.4518 \times 10^{-4}$	1.08

Table 3: Numericals results for Problem 2.

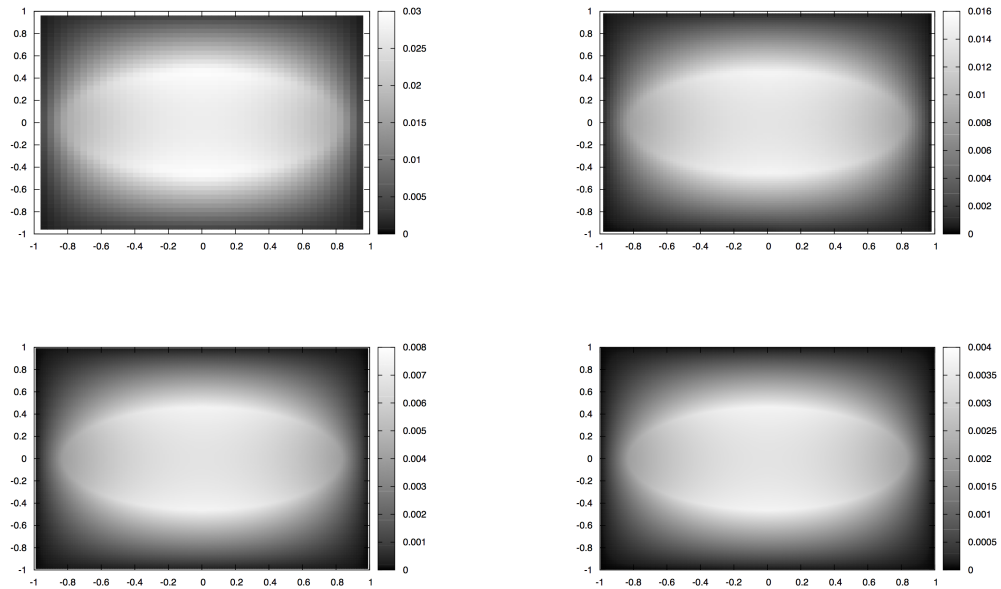


Figure 9: Discrete Green functions for  $\Omega_h^\delta$ , from top to bottom and left to right  $N = 50, 100, 200, 400$ .

- [9] C. Dapogny and P. Frey. Computation of the signed distance function to a discrete contour on adapted triangulation. *Calcolo*, 49(3):193–219, 2012.
- [10] F. Gibou, R. P. Fedkiw, L.T. Cheng, and M. Kang. A second order accurate symmetric discretization of the poisson equation on irregular domains. *J. Comput. Phys.*, 176:205–227, 2002.
- [11] F. Gibou and R.P. Fedkiw. A fourth order accurate discretization for the laplace and heat equations on arbitrary domains, with applications to the stefan problem. *J. Comput. Phys.*, 202:577–601, 2005.
- [12] D. Gilbard and N. Trudinger. *Elliptic Partial Differential Equations of Second Order*. Springer, 1998.
- [13] A. Guittet, M. Lepilliez, S. Tanguy, and F. Gibou. Solving elliptic problems with discontinuities on irregular domains â the voronoi interface method. *Journal of Computational Physics*, 298:747 – 765, 2015.
- [14] H. Huang and Z. Li. Convergence analysis of the immersed interface method. *IMA J. Numer. Anal.*, 19:583–608, 1999.
- [15] O. Kavian, M. Leguebe, C. Poignard, and L. Weynans. Classical electropermeabilization modelling at the cell scale. *J. Math. Biol.*, 68:235–265, 2014.
- [16] M. Leguebe, C. Poignard, and L. Weynans. A second-order cartesian method for the simulation of electropermeabilization cell models. *J. Comput. Phys.*, 292:114–140, 2015.

- 
- [17] R. J. Leveque and L.Z. Li. The immersed interface method for elliptic equations with discontinuous coefficients and singular sources. *SIAM J. Numer. Anal.*, 31(4):1019–1044, 1994.
- [18] Z.L. Li. A fast iterative algorithm for elliptic interface problems. *SIAM J. Numer. Anal.*, 35:230–254, 1998.
- [19] Z.L. Li and K. Ito. Maximum principle preserving schemes for interface problems with discontinuous coefficients. *SIAM J. Sci. Comput.*, 23:339–361, 2001.
- [20] X.-D. Liu, R. Fedkiw, and M. Kang. A boundary condition capturing method for poisson’s equation on irregular domains. *J. Comput. Phys.*, 160:151–178, 2000.
- [21] Bergmann M. and Weynans L. A sharp cartesian method for incompressible flows with large density ratios. Technical Report 8926, INRIA, 2016.
- [22] Breton M., Buret ., Krahenbuhl L., Leguebe M., Mir L.M., Perrussel R., Poignard, Scorretti R., and Voyer D. Nonlinear steady-state electrical current modeling for the electroporation of biological tissue. *IEEE Trans. on Mag.*, 51, 2015.
- [23] A. Mayo. The fast solution of poisson’s and the biharmonic equations on general regions. *SIAM J. Numer. Anal.*, 21:285–299, 1984.
- [24] S. Osher and R. Fedkiw. *Level Set Methods and Dynamic Implicit Surfaces*. Springer, 2003.
- [25] S. Osher and J. A. Sethian. Fronts propagating with curvature-dependent speed: Algorithms based on hamilton-jacobi formulations. *J. Comput. Phys.*, 79(12), 1988.
- [26] J. A. Sethian. *Level Set Methods and Fast Marching Methods*. Cambridge University Press, Cambridge, UK, 1999.
- [27] J. A. Sethian. Evolution, implementation, and application of level set and fast marching methods for advancing fronts. *J. Comput. Phys.*, 169:503–555, 2001.
- [28] A. Wiegmann and K. Bube. The explicit jump immersed interface method: finite difference method for pdes with piecewise smooth solutions. *SIAM J. Numer. Anal.*, 37(3):827–862, 2000.
- [29] S. a Yu and G.W. Wei. Three-dimensional matched interface and boundary (mib) method for treating geometric singularities. *J. Comput. Phys.*, 227:602–632, 2007.
- [30] Y. C. Zhou and G. W. Wei. On the fictitious-domain and interpolation formulations of the matched interface and boundary (mib) method. *J. Comput. Phys.*, 219:228–246, 2006.
- [31] Y. C. Zhou, S. Zhao, M. Feig, and G. W. Wei. High order matched interface and boundary method for elliptic equations with discontinuous coefficients and singular sources. *J. Comput. Phys.*, 213:1–30, 2006.



**RESEARCH CENTRE  
BORDEAUX – SUD-OUEST**

351, Cours de la Libération  
Bâtiment A 29  
33405 Talence Cedex

Publisher  
Inria  
Domaine de Voluceau - Rocquencourt  
BP 105 - 78153 Le Chesnay Cedex  
[inria.fr](http://inria.fr)

ISSN 0249-6399