



HAL
open science

Variational Data Assimilation for Optimizing Boundary Conditions in Ocean Models

Christine Kazantsev, Eugene Kazantsev, Mikhail Tolstykh

► **To cite this version:**

Christine Kazantsev, Eugene Kazantsev, Mikhail Tolstykh. Variational Data Assimilation for Optimizing Boundary Conditions in Ocean Models. *Meteorologiya i Gidrologiya / Russian Meteorology and Hydrology*, 2015, 40 (6), pp.383-391. 10.3103/S1068373915060047 . hal-01251353

HAL Id: hal-01251353

<https://inria.hal.science/hal-01251353>

Submitted on 6 Jan 2016

HAL is a multi-disciplinary open access archive for the deposit and dissemination of scientific research documents, whether they are published or not. The documents may come from teaching and research institutions in France or abroad, or from public or private research centers.

L'archive ouverte pluridisciplinaire **HAL**, est destinée au dépôt et à la diffusion de documents scientifiques de niveau recherche, publiés ou non, émanant des établissements d'enseignement et de recherche français ou étrangers, des laboratoires publics ou privés.

Variational Data Assimilation for Optimizing Boundary Conditions in Ocean Models

Christine Kazantsev*, Eugene Kazantsev†, Mikhail A. Tolstykh‡

Abstract

The review describes the development of ideas Gury Ivanovich Marchuk in the field of variational data assimilation for ocean models applied in particular in coupled models for long-range weather forecasts. Particular attention is paid to the optimization of boundary conditions on rigid boundaries. As idealized and realistic model configurations are considered. It is shown that the optimization allows us to determine the most sensitive model operators and bring the model solution closer to the assimilated data.

Keywords: Variational data assimilation, boundary conditions, ocean model, long-range weather forecasting

DOI: 10.3103/S1068373915060047

1 Introduction

We met G.I. Marchuk in 1990; at that time one of us started working in the Institute of Numerical Mathematics of Academy of Sciences of the USSR, another one was a postgraduate student in that institute, and the third one was on probation in the institute after the thesis defense. By that time G.I. Marchuk had left the post of the President of Academy of Sciences of the USSR and had an opportunity to pay more attention to the activities of the institute. We were amazed how quickly he could gain an understanding of a paper or a report even if they touched a subject being new for him.

G.I. Marchuk freely shared his experience of a researcher and human. For example, one of his recommendations was to change the research subject every few years. He made this himself: the scope of his scientific interest ranged from the modeling of nuclear reactors to immunology. The results of his studies in each area formed a book. His monographs included only new information that had never been published before. Each monograph is a book of new ideas, explanations, and computations.

One of the lectures by G.I. Marchuk in Institute Elie Cartan in Nancy dealt with the theory of optimum control, adjoint operators, and theory of perturbations.

*Universite Grenoble Alpes, Laboratoire Jean Kuntzmann, Grenoble, France

†INRIA, Laboratoire Jean Kuntzmann, Grenoble, France

‡Institute of Numerical Mathematics, Russian Academy of Sciences and Hydrometeorological Research Center of the Russian Federation, Moscow, Russia

He worked a lot on the methods of the solution of inverse problems, especially of complex ones for nonlinear systems of equations. In the middle of the 1970s in [1, 44] he formulated the theory of perturbations for solving such problems and 20 years later [2, 4] told how this theory was developed by him and his followers.

The followers of G.I. Marchuk used the theory of perturbations for initializing atmospheric models by solving the problem of optimum combination of the data obtained from the model and from observations [5, 6, 45]. Soon after that, based on the papers by G.I. Marchuk and his friend J.-L. Lions on the optimum control [37], French scientists also used adjoint equations for working out the variational algorithms of assimilation of meteorological data and for optimizing the initial conditions of atmospheric models [31, 33].

By the late 1980s–early 1990s, many research teams including both mathematicians and geophysicists were involved into the development of new methods of data assimilation and solution of inverse problems [3, 18, 38, 46, 47] as well as into the use of these methods in the models of the ocean and atmosphere [13,36, 49, 56]. This resulted in considerable increase in the reliability of the weather forecast [23]. In the second half of the 1990s, the European Center for Medium-Range Forecasting (ECMWF), Met Office, Meteo France, and many other centers started the operational use of the practical implementation of the theory and methods of data assimilation.

The models of the atmosphere with the fixed sea surface temperature and sea ice concentration have been commonly used for the short- and medium-range numerical weather prediction. In the world the probabilistic long-range weather forecasting mainly use the coupled models of the atmosphere, ocean, sea ice, and active soil layer [15]. For example, in ECMWF and Met Office, the NEMO ocean model is used jointly with the corresponding models of the atmosphere (<http://www.nemo-ocean.eu/>) [54]. This model is described in detail in [43] and is widely used by the European community, in particular, in the coupled models intended for the long-range weather forecasting. Recent studies have demonstrated that the use of coupled models is essential for the medium-range and even short-range forecasting at high latitudes [50]. This is also associated with the role of polynyas in the formation of mesoscale polar cyclones. Currently the leading centers, ECMWF and Met Office, are planning to carry out the operational implementation of the coupled model for the medium-range forecasting.

Due to the limited number of observations in the ocean, the ocean models were traditionally tested only for the simulation of certain integral characteristics. The use of the oceanatmosphere coupled models for the weather forecasting dictates the heightened (as compared to the climate models) requirements to the accuracy of the simulation of the fields of sea surface temperature and sea ice concentration. Therefore, the development of the system of observational data assimilation for the optimization of conditions on rigid boundaries for the ocean models considered in the present paper is also an important issue for the systems of numerical weather prediction, especially because the coupled oceanatmosphere model intended for the long-range weather forecasting is developed in Russia [7].

It should be noted that the assimilation of observational data was first of all aimed at the optimization of the initial conditions of models. As demonstrated in [39], the solution of the nonlinear model is extremely sensitive to initial data and the

small error in their estimate may increase exponentially. This fact attracted attention to studying the resistance of the solutions of geophysical models to inaccuracies in initial conditions and defined the following main objective of data assimilation: the three- and four-dimensional analysis of the fields of meteorological and oceanic data in order to agree them with the model and use subsequently as initial data for the model.

Certainly, it is doubtless that the solution of the nonlinear model is highly sensitive to initial conditions. However, one can suppose the same or even higher sensitivity of the solution to the other parameters of the model such as the diffusion coefficient, underlying surface approximation, the parameterization of subgrid processes, the description of near-continent areas in the ocean models, and other internal parameters of the model. In fact, the strong dependence of model currents on boundary conditions was noted in [8, 57], on bottom topography approximation, in [17, 22, 41], on diffusion coefficients, in [11], and on fundamental parameterizations such as the Boussinesq approximation and hydrostatics, in [40]. The sensitivity of the shallow water model to different parameters is analyzed in [30]. The theoretical and practical features of the use of adjoint equations for assessing the parameters of geophysical models are discussed in [48]; however, the comparatively small number of papers deal with data assimilation for the purpose of specifying or optimizing the model parameters that differ from initial conditions. Several attempts can be cited of the use of variational methods for optimizing bottom topography [25, 42] and for controlling the open boundary conditions of regional ocean models [52, 53, 55]; however, the number of such papers is much smaller than that of the papers dealing with the optimization of the models initial conditions.

2 Assimilating data to bring together a model and its boundary conditions.

Let us dwell in more detail on the variational data assimilation in order to coordinate the model with its boundary conditions on rigid boundaries. Special attention is paid to the situations with pronounced boundary layers because in this case the strongest dependence of the model solution on the approximation of boundary conditions is observed.

The optimization of boundary conditions using adjoint equations has already been used for simple systems. For example, the optimum control of conditions is described in [12, 19] for the linear heat equation, in [34, 35], for the Burgers equation, and in [32], for the nonlinear balance equation. In [26] it was proposed to control the discretization at the boundary points of the differential operator that uses them. The proposal followed from the result [35] demonstrating that the approximation of nontrivial boundary conditions should follow several rules in order to provide the needed order of approximation and the remainder. Indeed, the information about boundary conditions comes to the model through the specific discretization of operators near the boundary. Control over this discretization allows one, on the one hand, to control the conditions and, on the other hand, to control their approximation to the model grid.

Let us suppose that the derivative operator at the staggered grid for the func-

tion and its derivative is defined at $x > 0$ and the certain boundary condition is formulated at the point $x = 0$. Then, if the function is defined at the integer points $x_n = nh$ (n is an integer number), let us use the following formula for computing the value of the derivative near the boundary:

$$\left(\frac{\partial u}{\partial x}\right)_{x=h/2} = \frac{\alpha_0 + \alpha_1 u(0) + \alpha_2 u(h)}{h} \quad (1)$$

If the function is defined at the semi-integer points $x_n = (n - 1/2)h$, the derivative is computed using the

$$\left(\frac{\partial u}{\partial x}\right)_{x=0} = \frac{\alpha_0 + \alpha_1 u(h/2) + \alpha_2 u(3h/2)}{h} \quad (2)$$

As clear, any boundary conditions including the inhomogeneous ones can be taken into account by selecting the corresponding set of coefficients α . For example, the condition $u(0) = A$ will be taken into account and approximated with the second order of accuracy by selecting $\alpha_0 = -A$, $\alpha_1 = 0$, $\alpha_2 = 1$ in formula (1) and $\alpha_0 = -2A$, $\alpha_1 = 2$, $\alpha_2 = 0$ in formula (2).

In view of the fact that the grid with staggered points is used, the problem solution requires interpolation from integer to semi-integer points and vice versa. Interpolations at the boundary points should also take account of boundary conditions; therefore, their discretization is carried out in a similar way by constructing the linear combinations of function values with coefficients α (that certainly differ from those used for the discretization of derivatives).

Thus, the discrete approximation of derivatives and interpolation at the boundary points is presented in the form of the linear combinations of the function values with coefficients α . On varying these coefficients in the process of data assimilation, the cost function is minimized and the optimized values of these coefficients are found.

All coefficients α are considered as independent variables. The specific set is used for each model parameter and each operator even if boundary conditions are identical because the approximation of identical conditions to the grid may differ. Moreover, different sets of α are used at the different points of the boundary of two- or three-dimensional domain and the additional degrees of freedom are given for the spatial approximation of the boundary.

Papers [26, 29] analyzed the optimization of coefficients α in the process of the assimilation of the exact solutions of the one-dimensional wave equation and linear shallow water model; the following conclusions were made.

- The data assimilation used for controlling the operator discretization at the boundary points enables one to compensate the errors of the numerical scheme and bring the numerical solution much closer to the data having decreased the cost function by three or four orders;
- The adjoint equation and adjoint model turn out to be by 23 times longer than the adjoint model for optimizing the initial conditions. This is manifested in the number of the code lines and in the computer time needed for its computation and determines the heightened interest to the use of the procedures of

the automatic differentiation of the initial model code. It should be noted that at the differentiation of the complete models of the atmosphere or ocean, the obtained code of the adjoint model is to be optimized, especially in order to reduce its requirements to the main storage. An example of such optimization using the TAPENADE differentiator [21] is given in [28]; there the storage requirements were lowered by 25 times.

- The control of operator discretization may lead to the non-uniqueness of the result and to the existence of the nonzero core and does not allow its use for identifying boundary conditions as parameters in the general case.
- Such control may result in the failure of physical hypotheses made in the process of the model construction. For example, in the case of the one-dimensional wave equation, the initial geometry of domains in the shallow water model was changed not quite soundly in order to compensate the errors of the numerical scheme inside the domain.

Thus, the control of operator discretization at the boundary points can indicate a simple way of bringing the model solution closer to the data. However, such control needs the additional analysis of the results from the point of view of uniqueness and physical acceptability of obtained approximations.

In [27, 28], the optimization of coefficients a was carried out for the NEMO (Nucleus for European Modelling of the Ocean) European ocean model [43]. The core of this model is equations for two components of velocity, for temperature and salinity, and for sea surface height. The use of the hydrostatic approximation causes the fact that the vertical velocity is a diagnostic variable.

Let us start the experiments with the NEMO model with the simplified configuration: the rectangular parallelepiped with the size of 30° along the longitude, 20° along the latitude, and 4195 m along the vertical (depth). The horizontal resolution of the grid is 0.25° . As to the vertical, all the depth is divided into four layers of equal thickness. Thus, the grid consists of $120 \times 80 \times 4$ points for every model variable. The model is discretized at the three-dimensional analog of the Arakawa C-grid [9].

The wind friction stress is applied to the sea surface and is defined by the formula:

$$\tau_\phi = 0, \quad \tau_\lambda = -0.1 \frac{N}{m^2} \times \frac{\cos(\pi(\phi - 24^\circ))}{44^\circ - 24^\circ},$$

The conditions of impermeability and slipping are used on the lateral boundaries:

$$\vec{U} \cdot \vec{n} = 0, \quad \frac{\partial \vec{U}}{\partial \vec{n}} \cdot \vec{\tau} = 0,$$

(where $\vec{U} = (u, v)$ is the vector of horizontal velocity and $\vec{n}, \vec{\tau}$ are the normal and tangent to the domain boundary).

This academic configuration is of special interest for studying the effects of boundary conditions and their approximation on the model solution in the presence of strongly pronounced boundary layers. The non-triviality of the approximation of boundary conditions is clearly manifested in the experiment when the grid is

not parallel to the parallelepiped walls. In this case, especially in the presence of boundary layers, the whole solution turns out to be strongly depending on how the domain boundaries are approximated by the grid. This problem has been actively investigated in recent 15 years (for example, [8, 16, 20]); however, no recommendation have been made so far on the approximation of such boundaries for finding the reasonable solution in the general case.

This problem is rather important in oceanography because the continental margins most often do not coincide with the grid of finite-difference models that hampers their correct approximation, especially in the presence of boundary layers and jet streams such as the Gulfstream and Kuroshio. Certainly, this problem can be solved by rejecting finite differences and by using the methods that are more adapted to the complex geometry (for example, finite elements [14] or finite volumes [51]). However, the use of finite differences currently prevails due to their simplicity and speed.

Let us gain from the simplicity of the described rectangular configuration for the experiments with the optimum control of operator discretization at the boundary points. If the grid is parallel to the lateral boundaries, these boundaries turn to be approximated by straight lines. If the grid is rotated by 45° , the lateral boundaries are approximated by a staircase that results in the not quite correct formulation of boundary conditions, in particular, of slipping conditions. We know that the physical boundary is a straight line. Hence, according to the slipping conditions, the nonzero tangential velocity can be observed on the boundary because only the normal component must be zeroed due to the impermeability condition. However, the staircase approximation results in the fact that the impermeability condition is applied to the velocity. The slipping is taken into account only by zeroing the relative vorticity at the boundary points.

After the model have been integrated during 5 years at the grid being parallel to the lateral boundaries until the statistically stable state is reached, the field of currents is obtained with the strongly pronounced boundary layer close to the western and northern boundaries and with the poorly pronounced wave activity. Let us consider the obtained solution standard. The sea surface height for this solution is demonstrated in Fig.1A.

Now let us rotate the grid by 45° and again integrate the model for 5 years with the same diffusion, forcing, and boundary conditions strictly following the approximations embedded into the NEMO ocean model. The topography of the surface of this solution is presented in Fig. 1B. This solution differs from the standard one. Due to the staircase approximation of the boundary, the boundary current in the north is reduced by more than twice that has already been noted several times [8, 16].

Let us assimilate the standard solution interpolated to the rotated grid in the experiment on data assimilation and operator discretization control at the boundary points. The assimilation window $T = 50$ days turns out to be sufficient to provide the stability of obtained discretizations. In all derivatives and interpolations of the model for three coordinates at all boundary points, let us replace the classic discretization formulae by (1) and (2) containing the controlled coefficients α . The series of experiments on the standard solution assimilation revealed that the model solution at the rotated grid is sensitive only to the discretization of derivatives in the vorticity operator. All other interpolations, the first and second derivatives of the

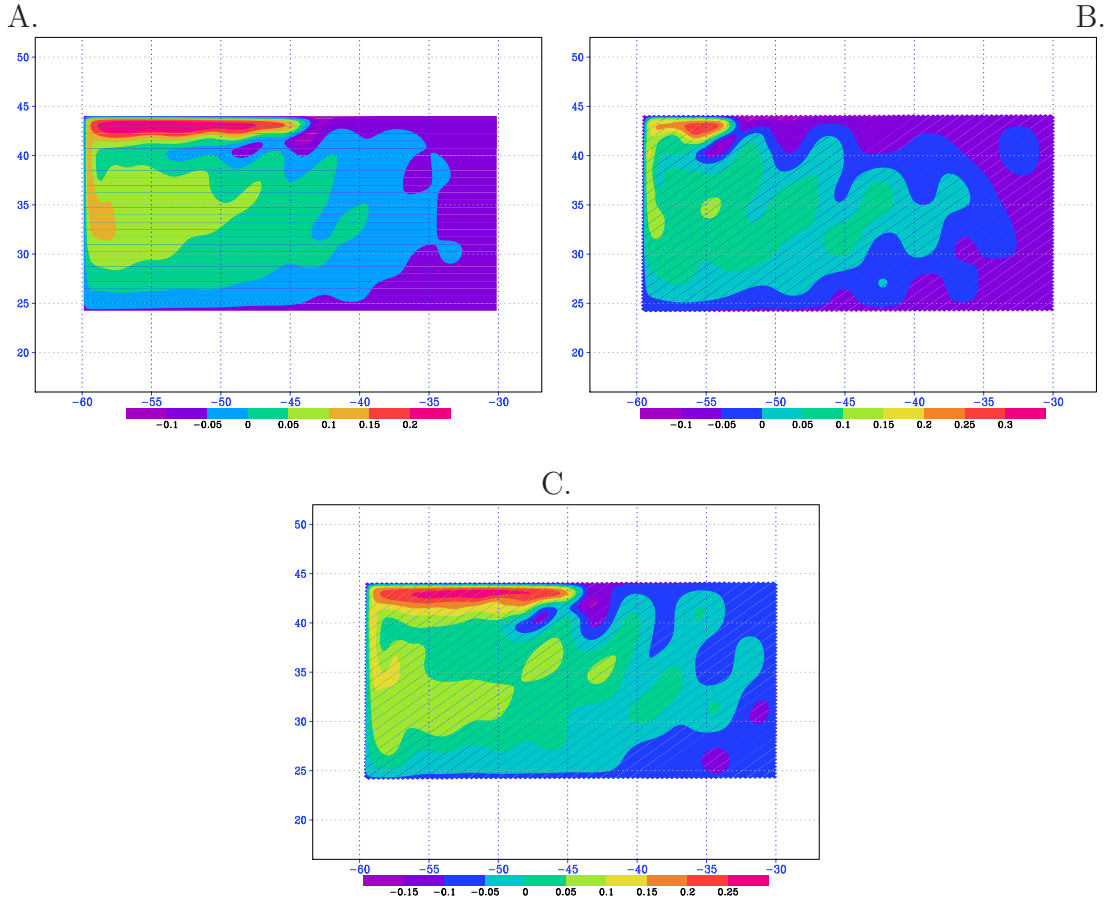


Figure 1: The sea surface height in the solution of model equations at the parallel grid (A), at the grid rotated by 45° (B), and at the rotated grid with the optimized discretization (C).

model did not practically change the initial coefficients α whereas the computation of vorticity at the boundary points was carried out using other formulae: instead of the usual approximations of derivatives with $\alpha = \pm 1$, we get the values $\alpha = \pm 1.4, \pm 0.6$ at the nearest point to the boundary. For example, the vorticity close to the western boundary is computed as

$$\left(\frac{\partial v}{\partial x} - \frac{\partial u}{\partial y}\right)_{i,j} = \frac{0.6v_{i,j-1} - 1.4v_{i-1,j-1}}{h} - \frac{1.4u_{i,j} - 0.6u_{i,j-1}}{h}.$$

In other words, the optimization requires the supplementation of the usual approximation of derivatives $\delta_x[v] = \frac{v_i - v_{i-1}}{h}$ with the projection of velocity to the tangent to the boundary divided by R

$$\left(\frac{\partial v}{\partial x} - \frac{\partial u}{\partial y}\right)_{i,j} = \delta_x[v] - \delta_y[u] - \frac{0.8}{h}(\bar{u} + \bar{v}) = \delta_x[v] - \delta_y[u] + \frac{\vec{U} \cdot \vec{\tau}}{R}, \quad (3)$$

where $R = -\frac{h}{0.8\sqrt{2}}$.

To get the meaning of this additive, let us advert to papers [10, 57] that demonstrate that the formulation of boundary slipping conditions on the curvilinear bound-

ary requires such additive. The parameter R has a meaning of the local radius of curvature of the boundary.

Having discretized the derivatives in the equation for vorticity at the boundary points following (3), we get the solution for the height of the sea surface whose topography is demonstrated in Fig. 1C. As clear, it is quite similar to the sea surface height of the standard solution in Fig. 1A; this enables a conclusion that the effects of staircase approximation of the boundary are compensated. The optimized boundary turns out to be not a straight line as it could be expected but a certain curve with the constant negative radius of curvature close to $-h/\sqrt{2}$. Moreover, as demonstrated in [27], in the case of the inclined grid the formulation of slipping conditions on the straight physical boundary of the domain may result in the instability in the approximation of the Coriolis parameter.

Data assimilation for the more realistic situation was carried out in [28]. This paper uses the ORCA-2 configuration of the NEMO model that was worked out for simulating the World Ocean at the grid with the horizontal resolution of 2° and with 31 vertical layers. In spite of the low resolution, this configuration is widely used for studying the ocean dynamics.

In this experiment the observational data from ECMWF databases received from Jason-1 and Envisat satellites were assimilated. Besides, the profiles of temperature and salinity from the ENACT/ENSEMBLES data bank were assimilated as well. The measurements of the sea surface height contain about 112000 values obtained on January 120, 2006. The profiles of temperature and salinity are represented by the data of 200000 measurements during the same period.

As well as in the previous experiment, let us first of all determine the operators whose discretization affects the model solution most of all. It is revealed that the discretization of zonal and meridional operators affects the results almost in no way. In the experiment that allows controlling only the discretizations of horizontal operators, the cost function does not virtually decrease (less than 1%) and there is almost no difference between model solutions with the optimized and classic discretizations. This fact is easily explained by the low horizontal resolution of the model. The two-degree grid of ORCA-2 configuration needs the high horizontal dissipation whose coefficient is equal to $40000 \frac{\text{m}^2}{\text{s}}$ in the extratropical zone. Such significant smoothing quickly levels potential boundary effects. The modification of the boundary in the previous experiment led to the change in the model solution under other conditions: the higher resolution and lower horizontal dissipation ($200 \frac{\text{m}^2}{\text{s}}$).

The maximum influence on the model solution is exerted by the boundary conditions in the operator of vertical dissipation. This is true for the ocean bottom only. Their optimization modifies considerably the fields of velocity, temperature, and salinity not only in the bottom layer but also on the sea surface that is proved by the sea surface height in the North Atlantic (Fig. 2).

To obtain this result, we integrated the ORCA-2 configuration of the NEMO model from January 1 to 30, 2006 using the initial data and the external forcing obtained from the observational data for that period. The sea surface height at the end of integration is presented in Fig. 2A. After that the assimilation of altimetric data and profiles of temperature and salinity for 20 days (January 1 to 20) was carried

out and the optimized coefficients α were found which define the discretization of operators $\frac{\partial}{\partial z} A^z \frac{\partial u}{\partial z}$ $\frac{\partial}{\partial z} A^z \frac{\partial v}{\partial z}$ at bottom points. Using these coefficients, the model was integrated for 30 days once again and the solution was found corresponding to the sea surface height demonstrated in Fig. 2B.

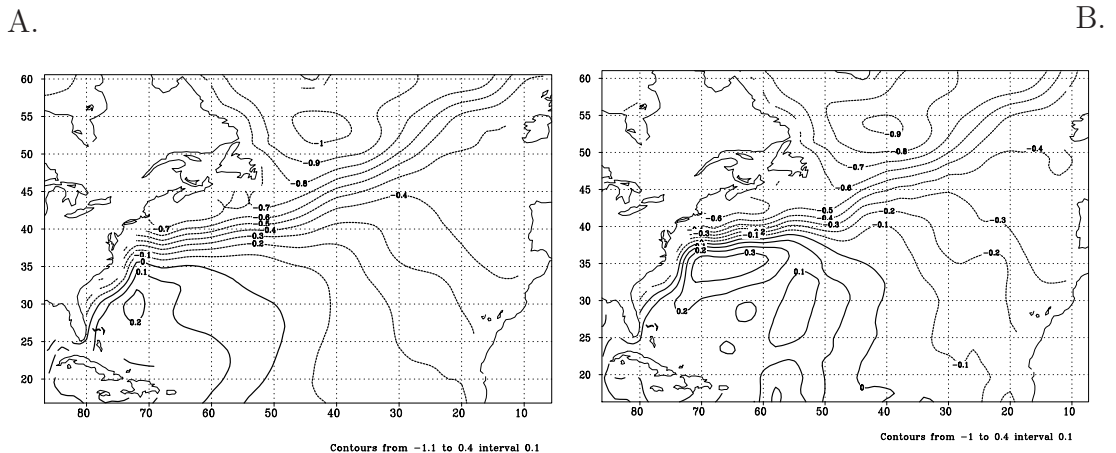


Figure 2: The sea surface height in the North Atlantic on January 30, 2006 computed using the classical (A) and optimized (B) discretization of operators of vertical diffusion at bottom points.

The basic feature of the ocean circulation in the North Atlantic is a formation of a narrow and long jet stream, the Gulf Stream. Certainly, the Gulf Stream is present in the satellite altimetry whose data are assimilated by the model. Therefore, the jet stream becomes more pronounced in the model solution after data assimilation: the velocity (being proportional to the meridional gradient of sea surface height) and the length of the Gulf Stream increase. However, it is difficult to explain why the modification of boundary conditions for the zonal and meridional velocities in the certain areas of the bottom is the most efficient for intensifying the surface jet stream.

3 Conclusions

Thus, it is clear that boundary conditions on rigid boundaries are also important in realistic ocean models. The use of the variational assimilation of data for their optimization can be useful in spite of the high cost of this procedure. As mentioned, data assimilation defines the model operators being the most sensitive to boundary conditions as well as identifies the geographic regions where such sensitivity is most pronounced. We automatically provide the stability of the obtained discretization by choosing the rather durable assimilation window. Its conservative properties can also be provided by adding the corresponding member to the cost function as demonstrated in [24]. However, it is often needed to comprehend the obtained results from the point of view of the correspondence to the accepted physical imperatives and hypotheses. The understanding of the physical sense of optimized coefficients for realistic models can also be hampered.

In conclusion it should be noted that the present review covers only the small part of the research areas developed by the followers of G.I. Marchuk. During his outstanding scientific life, G.I. Marchuk laid a strong foundation for studies in different fields of science and technology. Besides, he created a strong scientific school. Nowadays his grateful followers, scientific grandchildren and great-grandchildren, develop his ideas and continue the studies which he initiated in different fields of science, in different countries, and for different applications.

His work lives on and is continued in scientific papers, models, and technologies; it opens up new vistas for the mankind. His memory is kept with care by all who had the luck to know him personally and to work with him.

References

- [1] G. I. Marchuk, Basic and Adjoint Equations of the Dynamics of Atmosphere and Ocean, *Meteorol. Gidrol.*, No. 2 (1974) [in Russian].
- [2] G. I. Marchuk, Adjoint Equations and Complex System Analysis (Nauka, Moscow, 1992) [in Russian].
- [3] G. I. Marchuk and V. I. Agoshkov, Adjoint Equations in Nonlinear Problems and Their Applications, in *Functional and Numerical Methods of Mathematical Physics* (Naukova Dumka, Kiev, 1988) [in Russian].
- [4] G. I. Marchuk, V. I. Agoshkov, and V. P. Shutyaev, Adjoint Equations and Methods of Perturbations in the Nonlinear Problems of Mathematical Physics (Nauka, Moscow, 1993) [in Russian].
- [5] V. V. Penenko and N. N. Obraztsov, A Variational Initialization Method for the Fields of the Meteorological Elements, *Meteorol. Gidrol.*, No. 11 (1976) [*Sov. Meteorol. Hydrol.*, No. 11 (1976)].
- [6] V. V. Penenko and N. N. Obraztsov, A Variational-difference Method for the Objective Analysis of Meteorological-element Fields, *Meteorol. Gidrol.*, No. 6 (1978) [*Sov. Meteorol. Hydrol.*, No. 6 (1978)].
- [7] M. A. Tolstykh, N. A. Dianskii, A. V. Gusev, and D. B. Kiktev, Simulation of Seasonal Anomalies of Atmospheric Circulation Using Coupled Atmosphere-Ocean Model, *Izv. Akad. Nauk, Fiz. Atmos. Okeana*, No. 2, 50 (2014) [*Izv., Atmos. Oceanic Phys.*, No. 2, 50 (2014)].
- [8] A. Adcroft and D. Marshall, How Slippery are Piecewise-constant Coastlines in Numerical Ocean Models?, *Tellus A*, 50 (1998).
- [9] A. Arakawa and V. Lamb, Computational Design of the Basic Dynamical Processes of the UCLA General Circulation Model, *Methods in Computational Physics*, 17 (1977).
- [10] E. Blayo, A Regional Quasigeostrophic Circulation Model of the Western North Atlantic: A ModelData Comparison, *J. Mar. Syst.*, No. 6, 5 (1994).

- [11] F. Bryan, Parameter Sensitivity of Primitive Equation Ocean General Circulation Models, *J. Phys. Ocean.*, 17 (1987).
- [12] H. T. Chen, S. Y. Lin, H. R. Wang, and L. C. Fang, Estimation of Two-sided Boundary Conditions for Two-dimensional Inverse Heat Conduction Problems, *Int. J. Heat Mass Transfer*, 45 (2002).
- [13] P. Courtier and O. Talagrand, Variational Assimilation of Meteorological Observations with the Adjoint Vorticity Equation, *Quart. J. Roy. Meteorol. Soc.*, 113 (1987).
- [14] S. Danilov, G. Kivman, and J. Schroter, A Finite-element Ocean Model: Principles and Evaluation, *Ocean Modelling*, No. 2, 6 (2004).
- [15] F. J. Doblas-Reyes, J. Garcia-Serrano, F. Lienert, et al., Seasonal Climate Predictability and Forecasting: Status and Prospects, *Wiley Int. Rev.: Climate Change*, 4 (2013).
- [16] F. Dupont, D. Straub, and C. Lin, Influence of a Step-like Coastline on the Basin Scale Vorticity Budget of Mid-latitude Gyre Models, *Tellus A*, No. 3, 55 (2003).
- [17] M. Eby and G. Holloway, Sensitivity of a Large-scale Ocean Model to a Parameterization of Topographic Series, *J. Phys. Oceanogr.*, 24 (1994).
- [18] M. Ghil and P. Malanotte-Rizzoli, Data Assimilation in Meteorology and Oceanography, *Adv. Geophys.*, 33 (1991).
- [19] S. Gillijns and B. De Moor, Joint State and Boundary Condition Estimation in Linear Data Assimilation Using Basis Function Expansion, in *Proceedings of the 26th IASTED International Conference on Modelling, Identification, and Control*, Ed. by L. Bruzzone (ACTA Press, Canada, Innsbruck, Austria, 2007).
- [20] S. D. Griffiths, Kelvin Wave Propagation along Straight Boundaries in C-grid Finite-difference Models, *J. Comp. Phys.*, 255 (2013).
- [21] L. Hascoet and V. Pascual, TAPENADE 2.1 Users Guide: Technical Report: 0300/INRIA (2004), <http://www.inria.fr/rrrt/rt-0300.html>.
- [22] W. R. Holland, Baroclinic and Topographic Influences on the Transport in Western Boundary Currents, *Geophys. Fluid Dynamics*, 4 (1973).
- [23] E. Kalnay, M. Kanamitsu, and W. E. Baker, Global Numerical Weather Prediction at the National Meteorological Center, *Bull. Amer. Meteorol. Soc.*, 71 (1990).
- [24] E. Kazantsev, Boundary Conditions Control for a Shallow-water Model, *Int. J. Numer. Meth. Fluids*, No. 5, 68 (2012).
- [25] E. Kazantsev, Identification of Optimal Topography by Variational Data Assimilation, *J. Phys. Math.*, 1 (2009).

- [26] E. Kazantsev, Identification of Optimal Boundary Approximation by Variational Data Assimilation, *J. Comp. Phys.*, No. 2, 229 (2010).
- [27] E. Kazantsev, Optimized Boundary Conditions at Staircase-shaped Coastlines, *Ocean Dynamics*, No. 1, 65 (2015).
- [28] E. Kazantsev, Optimal Boundary Conditions for ORCA-2 Model, *Ocean Dynamics*, No. 8, 63 (2013).
- [29] E. Kazantsev, Optimal Boundary Discretization by Variational Data Assimilation, *Int. J. Numer. Meth. Fluids*, No. 10, 65 (2011).
- [30] E. Kazantsev, Sensitivity of a Shallow-water Model to Parameters, *Nonlinear Analysis. Series B. Real World Applications*, No. 3, 13 (2012).
- [31] F.-X. Le Dimet, A General Formalism of Variational Analysis, Normann, CIMMS Report, Rep.: OK 73091 (1982).
- [32] F.-X. Le Dimet and M. Ouberdous, Retrieval of Balanced Fields: An Optimal Control Method, *Tellus A*, No. 5, 45 (1993).
- [33] F.-X. Le Dimet and O. Talagrand, Variational Algorithm for Analysis and Assimilation of Meteorological Observations. Theoretical Aspects, *Tellus A*, 38 (1986).
- [34] J. M. Lellouche, J. L. Devenon, and I. Dekeyser, Boundary Control on Burgers Equation. A Numerical Approach, *Comput. Math. Appl.*, 28 (1994).
- [35] Y. Leredde, J. M. Lellouche, J. L. Devenon, and I. Dekeyser, On Initial, Boundary Conditions and Viscosity Coefficient Control for Burgers Equation, *Int. J. Numer. Meth. Fluids*, No. 1, 28 (1998).
- [36] J. Lewis and J. Derber, The Use of Adjoint Equations to Solve a Variational Adjustment Problem with Advective Constraints, *Tellus A*, 37 (1985).
- [37] J.-L. Lions, *Controle Optimal de Systmes Gouvernes par des Equations aux Derivees Partielles* (Dunod, 1968).
- [38] J.-L. Lions, *Controllabilite Exacte Perturbations et Stabilisation de Systemes Distribues* (Masson, Paris, 1988).
- [39] E. N. Lorenz, Deterministic Nonperiodic Flow, *J. Atmos. Sci.*, 20 (1963).
- [40] M. Losch, A. Adcroft, and J.-M. Campin, How Sensitive are Coarse General Circulation Models to Fundamental Approximations in the Equations of Motion?, *J. Phys. Oceanogr.*, No. 1, 34 (2004).
- [41] M. Losch and P. Heimbach, Adjoint Sensitivity of an Ocean General Circulation Model to Bottom Topography, *J. Phys. Oceanogr.*, No. 2, 37 (2007).
- [42] M. Losch and C. Wunsch, Bottom Topography as a Control Variable in an Ocean Model, *J. Atmos. Ocean. Technology*, 20 (2003).

- [43] G. Madec et al., NEMO Ocean Engine. Rep.: 27. Note du Pole de Modelisation de l'Institut Pierre Simon Laplace (2012).
- [44] G. I. Marchuk, Formulation of Theory of Perturbations for Complicated Models, *Appl. Math. Optimization*, 2 (1975).
- [45] G. I. Marchuk and V. V. Penenko, Application of Optimization Methods to the Problem of Mathematical Simulation of Atmospheric Processes and Environment, in *Lecture Notes in Control and Information Sciences*, Vol. 18: Modelling and Optimization of Complex System, Ed. by G. Marchuk (Springer, Berlin, Heidelberg, 1979).
- [46] G. I. Marchuk and V. P. Shutyaev, Iteration Methods for Solving a Data Assimilation Problem, *Russ. J. Numer. Anal. and Math. Modelling*, 9 (1994).
- [47] G. I. Marchuk and V. B. Zalesny, A Numerical Technique for Geophysical Data Assimilation Problem Using Pontryagin's Principle and Splitting-up Method, *Russ. J. Numer. Anal. and Math. Modelling*, 8 (1993).
- [48] I. M. Navon, Practical and Theoretical Aspects of Adjoint Parameter Estimation and Identifiability in Meteorology and Oceanography, *Dynamics Atmos. Ocean.*, 27 (1997).
- [49] I. M. Navon, X. Zou, J. Derber, and J. Sela, Variational Data Assimilation with an Adiabatic Version of the NMC Spectral Model, *Mon. Wea. Rev.*, 120 (1992).
- [50] P. Pellerin, H. Ritchie, F. J. Saucier, et al., Impact of a Two-way Coupling between an Atmospheric and an Ocean-ice Model over the Gulf of St. Lawrence, *Mon. Wea. Rev.*, 132 (2004).
- [51] T. Ringler, M. Petersen, R. L. Higdon, et al., A Multi-resolution Approach to Global Ocean Modeling, *Ocean Modelling*, 69 (2013).
- [52] I. Shulman, Local Data Assimilation in Specification of Open Boundary Conditions, *J. Atmos. Ocean. Technology*, 14 (1997).
- [53] I. Shulman, J. K. Lewis, A. F. Blumberg, and B. N. Kim, Optimized Boundary Conditions and Data Assimilation with Application to the M2 Tide in the Yellow Sea, *J. Atmos. Ocean. Technology*, No. 4, 15 (1998).
- [54] T. N. Stockdale, D. L. T. Anderson, M. A. Balmaseda, et al., ECMWF Seasonal Forecast System 3 and Its Prediction of Sea Surface Temperature, *Climate Dynamics*, 37 (2011).
- [55] V. Tailandier, V. Echevin, L. Mortier, and J.-L. Devenon, Controlling Boundary Conditions with a Fourdimensional Variational Data-assimilation Method in a Non-stratified Open Coastal Model, *Ocean Dynamics*, No. 2, 54 (2004).
- [56] J.-N. Thepaut and P. Courtier, Four-dimensional Variational Data Assimilation Using the Adjoint of a Multilevel Primitive-equation Model, *Quart. J. Roy. Meteorol. Soc.*, 117 (1991).

- [57] J. Verron and E. Blayo, The No-slip Condition and Separation of Western Boundary Currents, *J. Phys. Oceanogr.*, No. 9, 26 (1996).