



HAL
open science

The Monitoring of Rare Earths Mining from the Gannan Area of Southern China Using Remote Sensing Technology

Baoying Ye, Zhenghui Chen, Nisha Bao, Ying Li

► **To cite this version:**

Baoying Ye, Zhenghui Chen, Nisha Bao, Ying Li. The Monitoring of Rare Earths Mining from the Gannan Area of Southern China Using Remote Sensing Technology. 7th International Conference on Computer and Computing Technologies in Agriculture (CCTA), Sep 2013, Beijing, China. pp.197-205, 10.1007/978-3-642-54344-9_25 . hal-01220915

HAL Id: hal-01220915

<https://inria.hal.science/hal-01220915v1>

Submitted on 27 Oct 2015

HAL is a multi-disciplinary open access archive for the deposit and dissemination of scientific research documents, whether they are published or not. The documents may come from teaching and research institutions in France or abroad, or from public or private research centers.

L'archive ouverte pluridisciplinaire **HAL**, est destinée au dépôt et à la diffusion de documents scientifiques de niveau recherche, publiés ou non, émanant des établissements d'enseignement et de recherche français ou étrangers, des laboratoires publics ou privés.



Distributed under a Creative Commons Attribution 4.0 International License

The monitoring of Rare earths mining from the Gannan area of Southern China using remote sensing technology

Baoying ye^{1a}, Zhenghui chen², Nisha bao³, Ying li⁴

¹Institute of the Geology Survey, China University of Geosciences, Beijing, China

²Institute Mineral Resources, Chinese Academy of Geological Sciences, Beijing, China

³Institute for Geo-informatics & Digital Mine Research, Northeast University, Shenyang, China

⁴Tianjin Institute of Geology and Mineral Resources, Tianjin, China

^ayebaoying@gmail.com

Abstract: The weathering crust Elution-deposited Rare Earth is the peculiar and valuable source in China. The greatly mining activities in the south of GanZhou(Gannan) were occurred disorderly and illegally using the traditional extraction way, which brought out the dreadful environmental influence. In this study, the SPOT5 multi-spectral data was used to recognize and classify the destroyed land from mining activity. It was found that the most mining areas were located dispersedly, covered the area of 60.97km² in total with 524 sites, which accounted for 3.03% of the whole study area. There were 513 patches of destroyed area less than 1 km² distributed in the southwest of the study area. The results indicated that the mining integration should be concerned in this region and mining plan for further environmental protection.

Key words: South of Ganzhou, Rare earth, Remote sense, Monitoring

1. INTRODUCTION

Remote sensing and GIS technology play a key role in the study of Land use/cover change [1]. There were many researches focused on the environmental change from mining area using remote sensing data. These studies showed that satellite imagery can provide important information for mining environment and resolve controversies about future management directions [2-5].

There is a serious risk of chemical extraction from Weathering Crust Elution-deposited Rare Earth Ores that can make a major environmental damage in this area. Currently, the new technology has stepped into the third stage. In the first stage, the rare earth was separated using sodium chloride with oxalic acid as the precipitant. This process resulted in large amounts of wastewater contained high sodium chloride, which may pollute the surrounding soil and vegetation. Additionally, the residue of sodium chloride remained in the tailings would lead to soil salinization and affect the vegetation growth; In the second stage, sodium chloride was replaced by the ammonium sulfate as leaching solvent, which can reduce the soil pollution. However, the large-scale exploitation and depositing of ore body would result in the land destruction, water and soil loss[6]; In the third stage, the liquid was injected to dissolve ore body directly without exploitation, and then rare earth elements were separated. However, this process had a risk of landslide [7-9].

Gannan is the mainly rare earth mining area in China. The high profit of the rare earth increases illegal mining in this area, which brings high environmental cost. As the large cover area of Weathering Crust

Elution-deposited Rare Earth Ore, it is quite difficult to monitor and manage the whole area using traditional monitoring way based on field survey. The remote sensing technology has the capacity to acquire large area surface information and complete dynamic mining monitoring. Therefore, this study is aim to monitor rare earth mining in Gannan area using SPOT imagery, and acquire the information of dynamic exploitation process, we using manual interpretation method to discriminate the destroyed area.with the SPOT5 imagery, and filed surveying to confirm the result.

2.THE STUDY AREA

Gannan area of South China is rich in the rare earth sources. This study area was located in the west of Gannan (Figure1). The climate in this area is the tropical to subtropical. The wet and humid climate makes the flourishing plants, which is the source of the organic acid. It simulates the chemical weathering and formation of surface weathering crust. The rare earth is mainly from the weathering crust, even around 10 times higher than that from the base rock. This area is in the hilly country with elevation less than 550m. The topographic relief difference is 250m-260m. Gannan as the firstly mining area of rare earth exploitation has killed and polluted large area. Currently, there are dozens of active mining site in this area. The serious environmental issues are land degradation with vegetation removal and soil pollution.

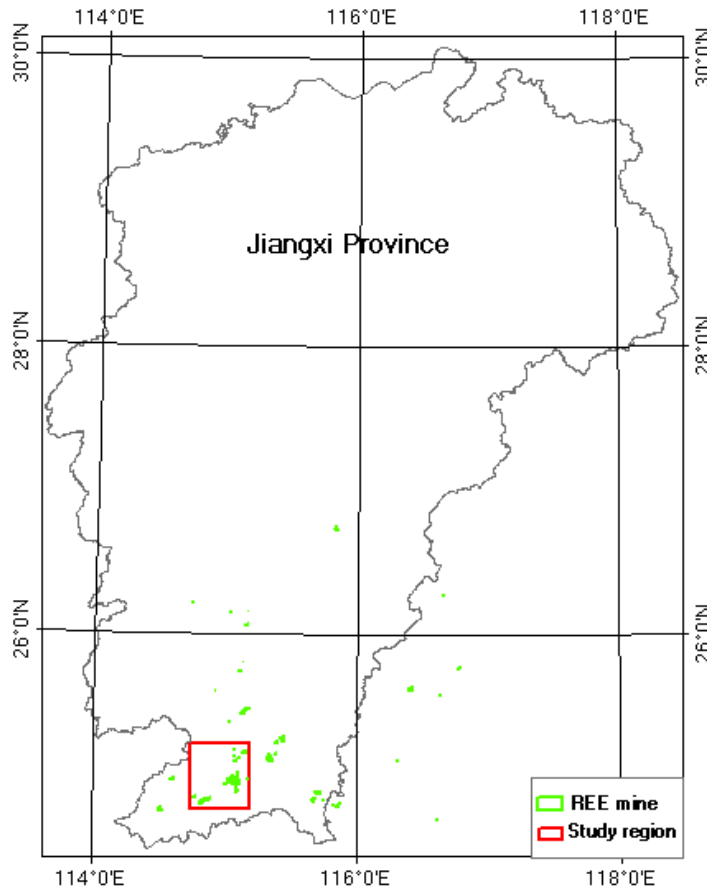


Fig.1 .The location of the study area in Gannan,China

3. DATA AND METHOD

In this study, the human interpretation was conducted to extract mining information from high resolution imagery, and then the data from field trip was used for accuracy assessment.

3.1 Data

Multi-spectral SPOT data with 10m resolution was used in this study, which acquired at 4th December 2010 with the dimap format. The ancillary data for image classification was Landsat/ETM data with 14.25m resolution and ASTER GRID DEM with 30m resolution (<http://gdex.cr.usgs.gov/gdex/>).

3.2 Ortho-rectification

As the landform of hilly country in this area, the mining site mostly located on the top of the hill. In order to target mining site accurately, the ortho-rectification of the imagery is necessary. Firstly, the band was composited by 412 for image interpretation. Furthermore, 21 ground control points were selected from ETM imagery. The ortho-rectification of SPOT5 imagery was conducted using bilinear interpolation resampling method based on the ERDAS's SPOT 5 orbital-pushbroom model. The average RMS error was below 1 pixel following ortho-rectification. As shown in the Figure 2, the SPOT 5 imagery covered the study area after ortho-rectification (Figure 2).

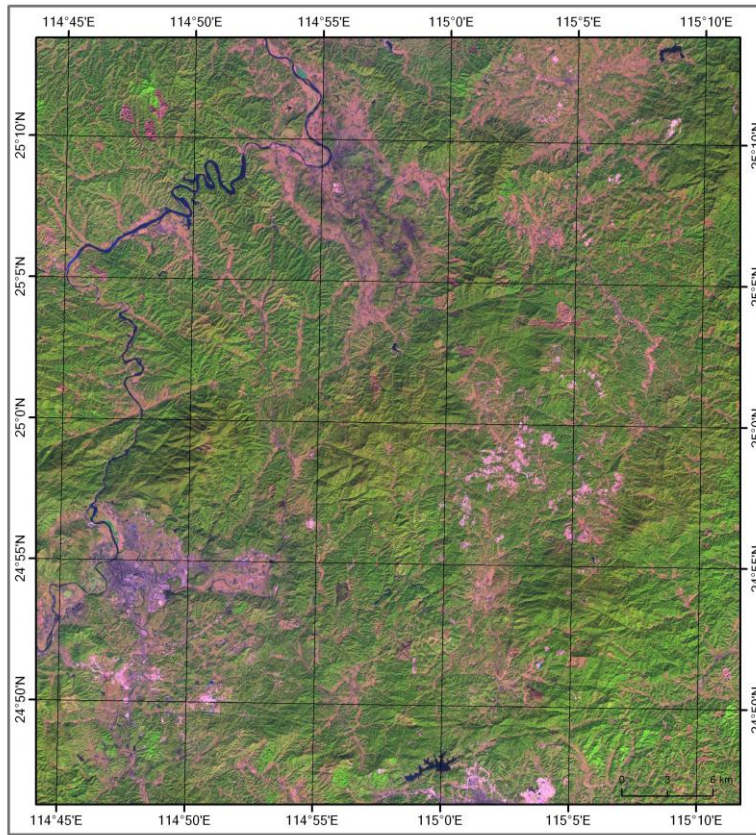


Fig.2. The ortho-rectified SPOT5 imagery with 412 RGB combination covered study area

3.3 Image interpretation thumb

No matter traditional or advanced extraction technology, both ways would result in the land destruction or landslide, which would perform as the bare ground in the imagery. Given to the hilly country area, the land cover information with disturbed or destroyed by mining was easily identified in human interpretation, as shown in the Figure3. The target object was digitized and drew under ArcGIS10.0 from human interpretation. Each object was labeled by different land cover type. Topologic checking was conducted to confirm the classification result. The smallest size of object was 6 pixels by 6 pixels.



Fig.3. The target object with pink color visualized in the imagery. A: The hill body was stripped ; B. The vegetation was removed; C The plants in the gully was destroyed

4 RESULTS AND ANALYSIS

The amount of patches in total was 524 with the area of 60.97km², which accounted for 3.03% in the study area. The largest patch size of destroyed area was 8.1km². The average patch size of destroyed area was around 1.30km². There were 513 patches of destroyed area less than 1km² distributed in the southwest of the study area. As shown in the Figure 4, the mining activities taken place at the east and south of this area, which corresponded to the classified results from the interpretation. The patches which represented the destroyed land cover can match the mining activities and mining lease.

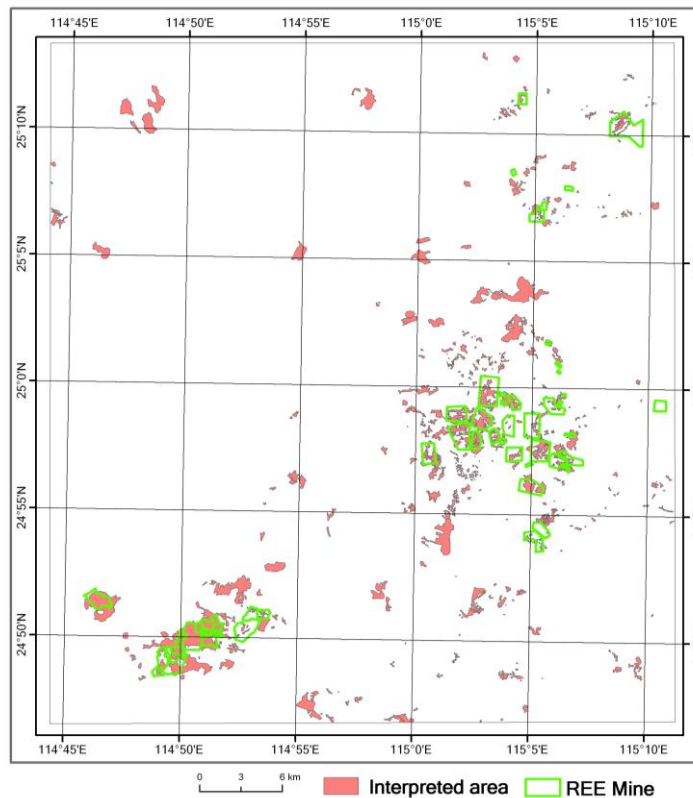


Fig.4. The classified results by human interpretation. (REE mine: rare earth elements)

The 3D analysis was conducted through ArcGlobe using SPOT and DEM data (Figure 5). Most REE mining activities mainly occurred on the top of the hill, which can be easily visualized from 3D imagery.

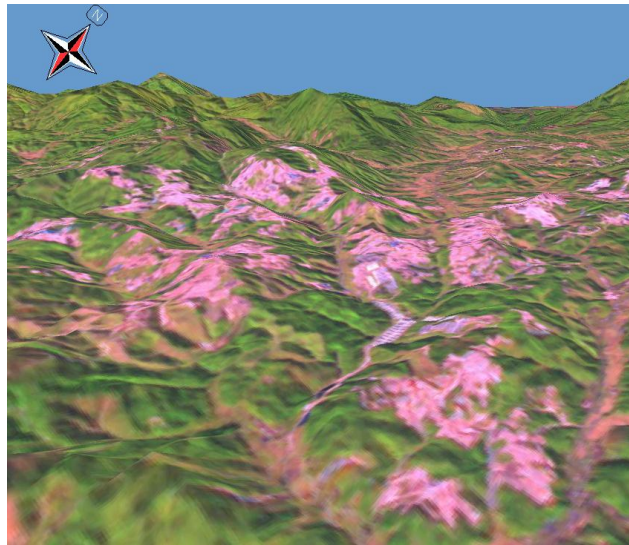


Fig.5. 3D visualization in ArcGlobe

In order to analysis the landform of mining area, the interpreted polygons were converted to Grid by 30m resolution. Through overlaid with ASTERDEM, it was found that the elevation of the active mining area was between 300m to 500m, and the slope of that area was between 10 degree to 20 degree.

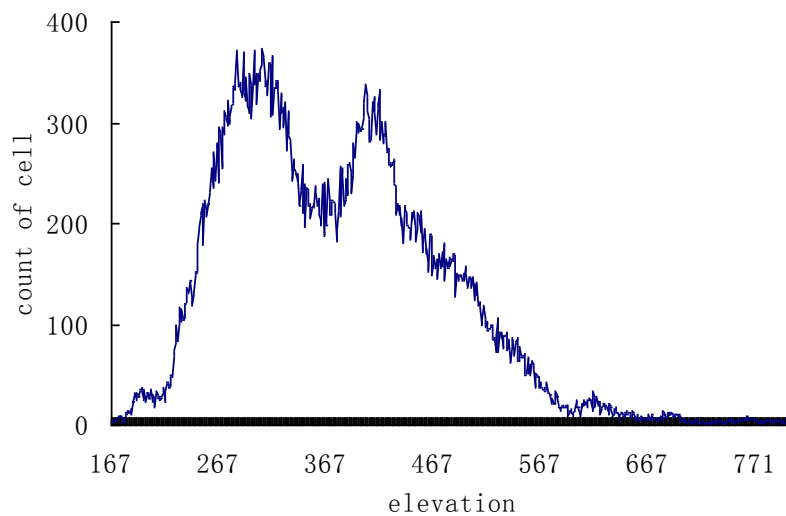


Fig.6. The elevation distribution in mining area

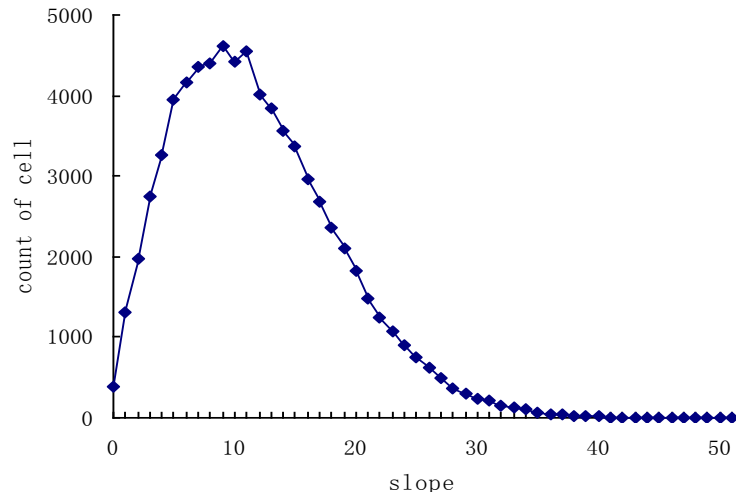


Fig.7. The slope distribution in mining area

5 FIELD SURVEY

The field trip in the Quannan, Dingnan and Longnan district of Gannan area were taken on Nov. 2012 for the accuracy assessment. The photos collected from this trip showed that landform in this mining area was totally changed by exploitation and digging. As shown in the Figure8, the vegetation was removed and destroyed in the mining area, and the serious water and soil loss occurred in this area.



CONCLUSION

Remote sensing has been a necessary and advanced technology in mining environmental monitoring, which can provide accurate, effective and comprehensive information for target object. The dynamic and update information from remote sensing technology can give a data support for Government and mining company to organize the environment rules and plan. Furthermore, high resolution imagery was required to acquire more detail information in mining area. Additionally, the small and disperse mining area should be integrated, which can be monitored and managed more easily and effectively.

REFERENCES

1. Chen Huailiang, Xu Xiangde, Liu Yujie. Review of Researches on Remote Sensing Monitoring and Impact on Environment of Land Use/Cover Change. *Meteorological Science and Technology*, 2005, 33(4): pp.289-294
2. BIAN Zhengfu, ZHANG Yanping. Land Use Changes in Xuzhou Coal Mining Area, *Acta Geographica Sinica*, 2006, 61(4): pp.349-358.
3. CHEN Longqian, GUO Dazhi, HU Zhaoling et al. .A Study on Remote Sensing Monitoring Land Use Change and Reclamation Measures of Subsided Land in Xuzhou Coal Mining Area, *Progress In Geography*, 2004, 23(2): pp.10-15.
4. CHEN Hua-li , CHEN Gang, GUO Jin-zhu , The Application of Landsat TM for Ecological Environmental Monitoring in Mining Area, *Remote Sensing Information*, 2004, (1), pp.31-34.
5. WANG Ping, LIU Shao-feng , The detection of REE mine exploitation site change based on multi-temporal remote sensing images, *2007, remote sensing for land & resources*, 2007, 2, pp.65-68.
6. Lan Ronghua, .The environmental problem and advice on Ion-adsorption Type Rare Earths Mineral [J]. *Truth Seeking*, 2004(5): pp.174-175.
7. CHI Ru-an, TIAN Jun, LUO Xian-ping, 2012, The basic research on the weathered crust elution-deposited rare earth ores, *Nonferrous Metals Science and Engineering*, 3(4), pp.1-13,
8. Liu Yi, Water and soil loss and Treatment methods after Improved Rare Earth continuous mining technology. *Water Resources Development Research*, 2002, 2(2): pp.30-32.
9. ZHAO Jing, TANG Xun-zhong and WU Chao, Status Quo of Mining and Recovering Technologies for Ion-absorbed Rare Earth Deposits in China, *Yunnan metallurgy* 2001, 30(1), pp.11-14.