



**HAL**  
open science

# New Winning Strategies for the Iterated Prisoner's Dilemma

Philippe Mathieu, Jean-Paul Delahaye

► **To cite this version:**

Philippe Mathieu, Jean-Paul Delahaye. New Winning Strategies for the Iterated Prisoner's Dilemma. 14th International Conference on Autonomous Agents and Multiagent Systems (AAMAS 2015), May 2015, Istanbul, Turkey. pp.1665-1666. hal-01199149

**HAL Id: hal-01199149**

**<https://inria.hal.science/hal-01199149>**

Submitted on 17 Nov 2015

**HAL** is a multi-disciplinary open access archive for the deposit and dissemination of scientific research documents, whether they are published or not. The documents may come from teaching and research institutions in France or abroad, or from public or private research centers.

L'archive ouverte pluridisciplinaire **HAL**, est destinée au dépôt et à la diffusion de documents scientifiques de niveau recherche, publiés ou non, émanant des établissements d'enseignement et de recherche français ou étrangers, des laboratoires publics ou privés.

# New Winning Strategies for the Iterated Prisoner's Dilemma

## (Extended Abstract)

Philippe Mathieu  
CRISTAL Lab. UMR 9189 CNRS  
Lille University  
Villeneuve d'Ascq, France  
philippe.mathieu@univ-lille1.fr

Jean-Paul Delahaye  
CRISTAL Lab. UMR 9189 CNRS  
Lille University  
Villeneuve d'Ascq, France  
jean-paul.delahaye@univ-lille1.fr

### Categories and Subject Descriptors

I.2.11 [Artificial Intelligence]: Distributed Artificial Intelligence—*Multiagent systems*

### General Terms

Algorithms, Experimentation

### Keywords

Game theory, group strategy, iterated prisoner's dilemma, IPD, agent's behaviour, memory, opponent identification

## 1. INTRODUCTION

In the iterated prisoner's dilemma game, new successful strategies are regularly proposed especially outperforming the well-known *tit\_for\_tat* strategy. New forms of reasoning have also recently been introduced to analyse the game. They lead W. Press and F. Dyson [4] to a double infinite family of strategies that -theoretically- should all be efficient strategies. We study and confront using several experimentation the main strategies introduced since the discovery of *tit\_for\_tat*. The iterated prisoner's dilemma is a game that leads to understand various basic truths about social behaviour and how cooperation between entities is established and evolves. Several studies [1, 4] have led to consider other strategies than the famous *tit\_for\_tat*. We have begun to make a balance of the situation with the desire to reach clear and as unbiased as possible conclusions. Our method is based on three main ideas, each converging on robust results. (1) Confronting the candidate strategies on the principle of the **tournament** (mainly for information) and the method of **ecological competition** which gives results independent from initial conditions. (2) Using sets of strategies in which all strategies of a particular class (eg using the last move of past of each player) are in competition. This method of **complete classes** [2] avoids any subjective choice. (3) Taking a phased approach by not trying to find the best of all strategies in absolute terms, but by combining the results of progressive massive confrontation experiments.

**Appears in:** *Proceedings of the 14th International Conference on Autonomous Agents and Multiagent Systems (AA-MAS 2015)*, Bordini, Elkind, Weiss, Yolum (eds.), May, 4-8, 2015, Istanbul, Turkey.

International Foundation for Autonomous Agents and Multiagent Systems (www.ifaamas.org).

## 2. RULES OF THE GAME

The prisoner's dilemma is that accorded to two entities with a choice between cooperation (c) and defection (d) and are remunerated by R points each if each plays c, P points if each plays d and receiving T respectively S points if one plays d and the other c. We describe these rules by writing: [c, c]  $\rightarrow$  R + R, [d, d]  $\rightarrow$  P + P, [d, c]  $\rightarrow$  T + S

In our experiments with use the classical values T=5, R=3, P=1, S=0 and 1000 rounds for each meeting.

We make a distinction between deterministic strategies and probabilistic strategies (where choices can depend on chance). The study of literature about the dilemma led us to define a set of 17 basic deterministic strategies (including the simplest imaginable strategies). We have added 13 probabilistic strategies mainly taking into account the recent discoveries of Press and Dyson on extortion [4].

Let us present the set of 17 basic strategies. **all\_c**: always cooperates. **all\_d**: always defects. **tit\_for\_tat**: cooperates on the first move then plays what its opponent played the previous move. **spiteful**: (also called *grim*) cooperates until the opponent defects and thereafter always defects. **soft\_majo**: begins by cooperating and cooperates as long as the number of times the opponent has cooperated is greater than or equal to the number of times it has defected; otherwise she defects. **hard\_majo**: defects on the first move and defects if the number of defections of the opponent is greater than or equal to the number of times she has cooperated; else she cooperates. **per\_ddc**: plays ddc periodically. **per\_ccd**: plays ccd periodically. **mistrust**: (also called *suspicious\_tft*) defects on the first move then play what my opponent played the previous move. **per\_cd**: plays cd periodically. **pavlov**: (also called *win-stay-lose-shift*) cooperates on the first move and defects only if both the players did not agree on the previous move. **tf2t**: cooperates the two first moves, then defects only if the opponent has defected during the two previous moves. **hard\_tft**: cooperates the two first moves, then defects only if the opponent has defected one of the two previous moves. **slow\_tft**: cooperates the two first moves, then begin to defect after two consecutive defections of its opponent; returns to cooperation after two consecutive cooperations of its opponent. **gradual**: cooperates on the first move, then defect  $n$  times after  $n^{th}$  defections of its opponent, and calms down with 2 cooperations [1]. **prober**: plays the sequence d,c,c, then always defects if its opponent has cooperated in the moves 2 and 3; plays as *tit\_for\_tat* in other cases. **mem2**: be-

has like *tit\_for\_tat* : in the first two moves, and then shifts among three strategies *all\_d*, *tit\_for\_tat*, *tf2t* [3].

Memory(X,Y) is the complete class which is the class of all deterministic strategies using my X last moves and the Y last moves of my opponent. In each Memory(X,Y) complete class, all deterministic strategies can be completely described by their “genotype” i.e. a chain of C/D actions to do that begin with the *max(X,Y)* first moves i.e. not depending on the past. These starting actions are written in first case. The list of cases of the past is sorted by lexicographic order on my X last moves (from the older to the newer) followed by my opponent’s Y last moves (from the older to the newer).

Our platform has allowed us to compete in tournament and ecological competitions families of 1000 and even 2000 strategies. Our experiments using large complete classes led us to discover four new strategies :

**winner12** (mem12\_ccCDCDCDD), **winner21** (mem21\_dcCDCDCDD), **spiteful\_cc** which is classical spiteful but with a cc forced start, **tft\_spiteful** which starts with c, then plays *tit\_for\_tat* unless she has been betrayed two times consecutively, in which case she always betrays (plays *all\_d*).

**The 17 basic + 4 new strategies** : The experiment A involves the 17 basic strategies with these 4 new strategies.

Tournament ranking		Ecological ranking			
1	gradual	60823	1	gradual	258
2	spiteful_cc	58981	2	spiteful_cc	224
3	tit_for_tat	57661	3	tft_spiteful	195
4	tft_spiteful	57486	4	winner12	192
5	winner12	57072	5	tit_for_tat	182
6	soft_majo	56330	6	slow_tft	168
7	slow_tft	55821	7	tf2t	161
8	tf2t	55156	8	soft_majo	156

It is remarkable that three among the four new introduced strategies are in the 4 first ecological ranking.

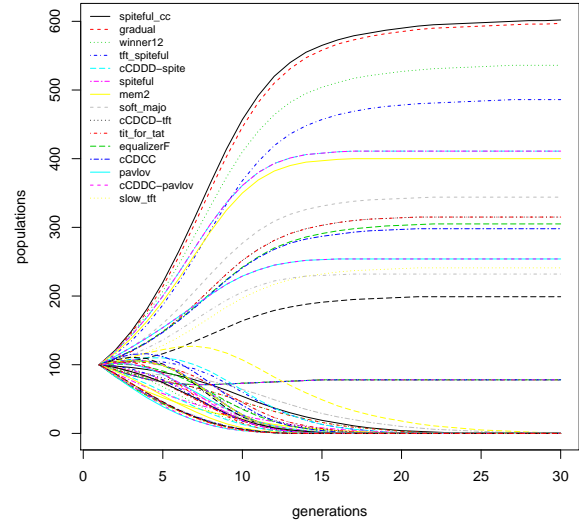
**All deterministic + 4 new strategies** : For this experiment B we add the Memory(1,1) complete class. This leads to a set of 53 strategies (17 + 32 + 4 new).

Tournament ranking		Ecological ranking			
1	spiteful_cc	152873	1	spiteful_cc	528
2	gradual	150685	2	gradual	520
3	winner12	149466	3	winner12	467
4	spiteful	148934	4	tft_spiteful	438
5	cCDDD-spite	148934	5	mem2	345
6	mem2	146936	6	cCDDD-spite	343
7	tft_spiteful	144068	7	spiteful	343
8	tit_for_tat	132809	8	tit_for_tat	286

This time the four winners are exactly the same as in the previous experiment B but not exactly in the same order. This result shows the robustness of these four strategies.

**All deterministic and probabilistic** : This experiment C is built with all the basic deterministic strategies obtained with the 17 initial basic strategies and the Memory(1,1) complete class added with 13 probabilistic strategies coming from [4] and the four new strategies discovered thanks to the complete classes experiments. This leads to a set of 66 strategies.

Tournament ranking		Ecological ranking			
1	spiteful_cc	8708806	1	spiteful_cc	601
2	gradual	8642021	2	gradual	595
3	winner12	8589048	3	winner12	535
4	spiteful	8512030	4	tft_spiteful	485
5	cCDDD-spite	8511238	5	cCDDD-spite	409
6	mem2	8412547	6	spiteful	409
7	tft_spiteful	8275738	7	mem2	399
8	cCDDC-pavlov	8011926	8	soft_majo	344



These experiments show clearly that *winner21* seems less robust than the three other strategies.

### 3. CONCLUSION

According to the state of the art, we have collected the most well-known interesting strategies. Then we have used the systematic and objective complete classes method to evaluate them. These experiments led us to identify seven efficient and robust strategies: *spiteful\_cc*, *gradual*, *winner12*, *tft\_spiteful*, *spiteful*, *mem2*, *soft\_majo*. We note that they are almost all mixtures of two basic strategies : *tit\_for\_tat* and *spiteful*. This suggests that *tit\_for\_tat* is not severe enough, that *spiteful* is a little too much and that finding ways to build hybrids of these two strategies is certainly what gives the best and most robust results. We also note that using information about the past beyond the last move is helpful. Among the seven strategies that our tests put in the head of ranking some of them use the past from the beginning (*gradual* and *soft\_majo*) and all the others use two moves of the past or a little more. This work illustrates the fact that using complete classes of increasingly size will allow to identify increasingly efficient strategies, and provides a broad framework to find new ones.

### 4. REFERENCES

- [1] B. Beaufls, J.-P. Delahaye, and P. Mathieu. Our meeting with gradual, a good strategy for the iterated prisoner’s dilemma. In *Proc of ALIFE’5 conf.*, pages 202–209. The MIT Press, 1996.
- [2] B. Beaufls, J.-P. Delahaye, and P. Mathieu. Complete classes of strategies for the classical iterated prisoner’s dilemma. In *Proc EP’7 conf.*, volume 1447 of *LNCS*, pages 33–41. Springer, 1998.
- [3] J. Li and G. Kendall. The effect of memory size on the evolutionary stability of strategies in iterated prisoner’s dilemma. *Evolutionary Computation, IEEE Transactions*, PP(99):1–8, 2013.
- [4] W. H. Press and F. J. Dyson. Iterated prisoner’s dilemma contains strategies that dominate any evolutionary opponent. *PNAS*, 109(26):10409–10413, 2012.