



HAL
open science

SpaceNet: Multivariate brain decoding and segmentation

Elvis Dohmatob, Michael Eickenberg, Bertrand Thirion, Gaël Varoquaux

► **To cite this version:**

Elvis Dohmatob, Michael Eickenberg, Bertrand Thirion, Gaël Varoquaux. SpaceNet: Multivariate brain decoding and segmentation. OHBM, Jun 2015, Honolulu, Hawaii, United States. hal-01187230

HAL Id: hal-01187230

<https://inria.hal.science/hal-01187230>

Submitted on 26 Aug 2015

HAL is a multi-disciplinary open access archive for the deposit and dissemination of scientific research documents, whether they are published or not. The documents may come from teaching and research institutions in France or abroad, or from public or private research centers.

L'archive ouverte pluridisciplinaire **HAL**, est destinée au dépôt et à la diffusion de documents scientifiques de niveau recherche, publiés ou non, émanant des établissements d'enseignement et de recherche français ou étrangers, des laboratoires publics ou privés.

Abstract. We present *SpaceNet*, a multivariate method for brain decoding and segmentation. SpaceNet uses priors like TV (Total Variation) [Michel et al. 2011], TV-L1 [Baldassarre et al. 2012, Gramfort et al. 2013], and GraphNet / Smooth-Lasso [Hebiri et al. 2011, Grosenick et al. 2013] to regularize / penalize classification and regression problems in brain imaging. The result are brain maps which are both sparse (i.e regression coefficients are zero everywhere, except at predictive voxels) and structured (blobby). The superiority of such priors over methods without structured priors like the Lasso, SVM, ANOVA, Ridge, etc. for yielding more interpretable maps and improved classification / prediction scores is now well-established [Baldassarre et al. 2012, Gramfort et al. 2013, Grosenick et al. 2013]. In addition, such priors lead to state-of-the-art methods for extracting brain atlases [Abraham et al. 2013].

MODEL

$$\text{Minimize } \underbrace{\mathcal{L}(X, y, w)}_{\text{loss / datafit term}} + \underbrace{\alpha (\rho \|w\|_1 + (1 - \rho) \Omega(\nabla w))}_{\text{penalty / regularization / prior term}}$$

For $w \in \mathbb{R}^p$,

$$\text{where } \Omega(z) = \begin{cases} \frac{1}{2} \|z\|_2^2 := \frac{1}{2} \sum_{j=1}^p \sum_{k=1}^3 z_{j,k}^2, & \text{for GraphNet,} \\ \|z\|_{1,2} := \sum_{j=1}^p \sqrt{\sum_{k=1}^3 z_{j,k}^2}, & \text{for TV-L1,} \\ \dots & \end{cases} \quad (1)$$

where :

- ◆ $X \in \mathbb{R}^{n \times p}$ is the **design matrix** ; $n = \#$ samples (brain images, TRs, etc.) ; $p = \#$ voxels (the features). In practice $n \ll p$ (**high-dimensions**).
- ◆ $y \in \mathbb{R}^n$ is the response variable to be predicted.
- ◆ w is the **brain map of regressor coefficients** (one coefficient per voxel).
- ◆ $\mathcal{L}(X, y, w)$ is the **loss / datafit term**, which is $\frac{1}{2} \|Xw - y\|_2^2$ in regression settings, logistic loss in classification settings, etc.
- ◆ $\nabla = [\nabla_x, \nabla_y, \nabla_z]^T \in \mathbb{R}^{3p \times p}$ is the 3D discrete spatial gradient operator.
- ◆ $\alpha > 0$ is the total amount of regularization.
- ◆ ρ ($0 < \rho \leq 1$) is a mixing constant between the **sparsity-inducing** ℓ_1 part and the **structure-promoting** $\Omega(\nabla w)$ part of the penalty term.

METHODS

- ◆ The SpaceNet model leads to **difficult non-smooth mathematical optimization problems** (1), making their implementation challenging.
- ◆ [Dohmatob et al. 2014 (PRNI)] benchmarked a rich variety of cutting-edge solvers for such problems, and gave recommendations on how to effectively implement these algorithms in practice. In these benchmarks, the FISTA algorithm [Beck & Teboulle 2009] emerged as the go-to algorithm for the TV-L1 problem, and has been implemented as the SpaceNet default solver (for problem (1)).

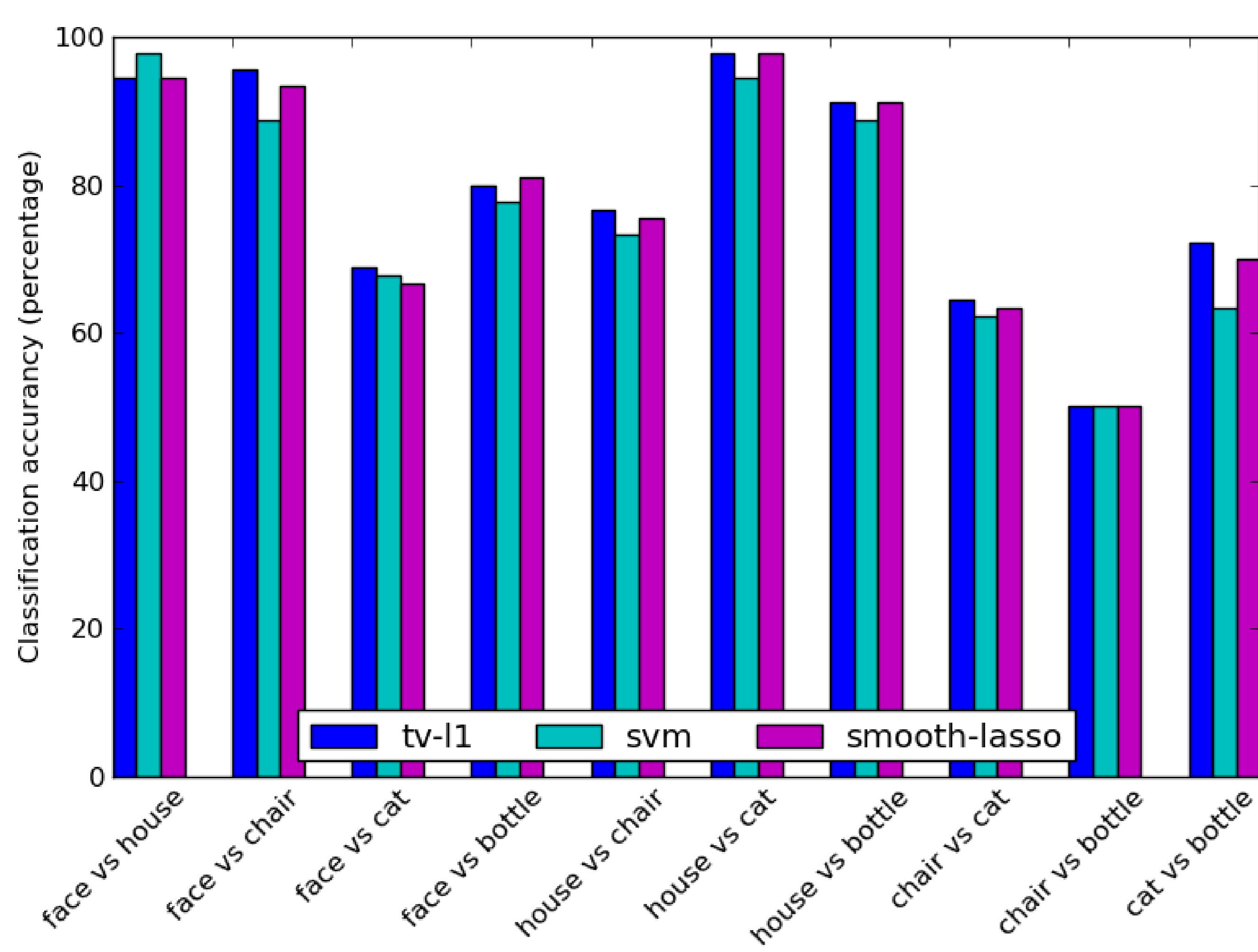
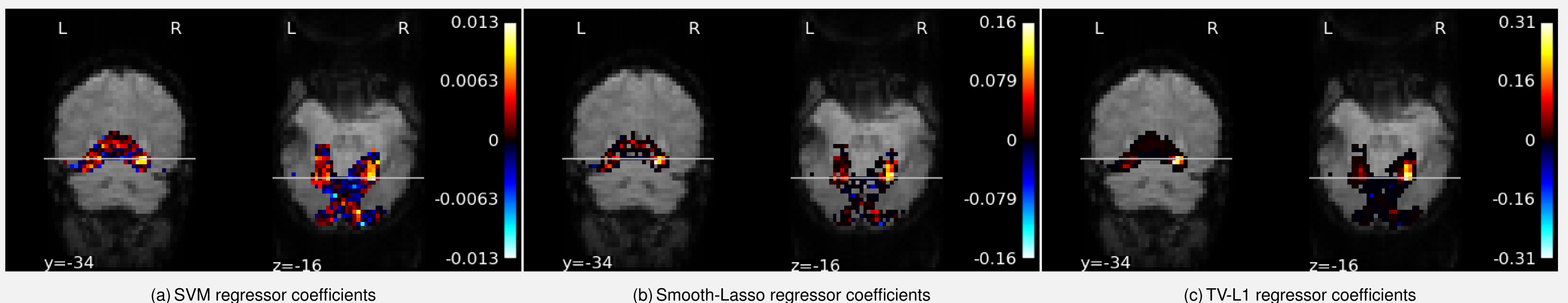
SPEEDUP HEURISTICS

Model-selection in SpaceNet is via **automatic cross-validation** on a 2D parameter grid of regularization parameters (α, ρ) . Moreover, we have developed a number of heuristics that can result in up to **10-fold speedup in runtime** without sacrificing the predictions / classifications :

- ◆ **Univariate feature-screening**, whereby irrelevant voxels are detected and eliminated from the model even before solving problem (1).
- ◆ **Early-stopping**, whereby the optimization procedure is abruptly once the scores on cross-validation leftout data stop improving.

These speedup heuristics will appear in proceedings of PRNI 2015 in a slightly more technical discussion [Dohmatob et al. 2015 (PRNI)].

RESULTS & CONCLUDING REMARKS



(d) Classification accuracy

FIGURE : The figure shows results of comparing SpaceNet TV-L1 and Smooth-Lasso priors against an SVM (Support Vector Machine) classifier on the visual-recognition dataset [Haxby et al. 2001]. As can be seen from the figure, SpaceNet priors yield stable and more interpretable maps, and also better regression / classification performance. The complete results will appear in [DOHMATOB et al. 2015 (OHBM)].

CONCLUSION

- ◆ We have presented, SpaceNet, a family of priors for brain decoding which enforce both sparsity and structure, leading to better prediction / classification scores and more interpretable brain maps.
- ◆ Indeed, they leverage a feature-selection function (since they limit the number of active voxels), and also a structuring function (since they penalize local differences in the values of the brain map).
- ◆ We believe that such priors will become commonplace in future.
- ◆ SpaceNet is now part of Nilearn [Abraham et al. 2014] : <http://nilearn.github.io>, an open-source Python library which features cutting-edge algorithms for machine learning in neuroimaging : data-cleaning, clustering, variance analysis, covariance estimation, decoding, and more.