



**HAL**  
open science

## Modular C

Jens Gustedt

► **To cite this version:**

| Jens Gustedt. Modular C. [Research Report] RR-8751, INRIA. 2015. hal-01169491v3

**HAL Id: hal-01169491**

**<https://inria.hal.science/hal-01169491v3>**

Submitted on 24 Jan 2018 (v3), last revised 12 Jun 2018 (v4)

**HAL** is a multi-disciplinary open access archive for the deposit and dissemination of scientific research documents, whether they are published or not. The documents may come from teaching and research institutions in France or abroad, or from public or private research centers.

L'archive ouverte pluridisciplinaire **HAL**, est destinée au dépôt et à la diffusion de documents scientifiques de niveau recherche, publiés ou non, émanant des établissements d'enseignement et de recherche français ou étrangers, des laboratoires publics ou privés.



# Modular C

Jens Gustedt

**RESEARCH  
REPORT**

**N° 8751**

June 2015

Project-Team Camus





## Modular C

Jens Gustedt

Project-Team Camus

Research Report n° 8751 — version 3 — initial version June 2015 —  
revised version Jan. 2018 — 41 pages

**Abstract:** We propose an extension to the C standard called *Modular C*. It consists in the addition of a handful of directives and a naming scheme transforming traditional translation units into *modules*. The change to the C language is minimal since we only add one feature, composed identifiers, to the core language.

Our modules can import other modules as long as the import relation remains acyclic and a module can refer to its own identifiers and those of the imported modules through freely chosen abbreviations. Other than traditional C's `#include`, our import directive ensures complete encapsulation between modules.

The abbreviation scheme allows to seamlessly replace an imported module by another one with equivalent interface. In addition to the export of symbols, we provide parameterized code injection through the import of “*snippets*”. This implements a mechanism that allows for code reuse, similar to X macros or templates.

Additional features of our proposal are a simple dynamic module initialization scheme, a structured approach to the C library and a migration path for existing software projects.

The whole approach is validated by a formal description of a translation procedure from *Modular C* to common C and a proof of the correctness of that procedure. Thereby we are able to show that the class of *stable* programs can effectively be expressed in Modular C and that the gain of modularity is not thwarted by a loss of expressiveness. Here stable programs are those that do not use extensive C macro facilities that manipulate identifiers.

Our approach is implemented and used successfully and efficiently in several projects. Interfaces can easily be provided both ways, to interface existing projects for Modular C or to interface Modular C libraries with other programming languages

**Key-words:** C, modularity, encapsulation

RESEARCH CENTRE  
NANCY – GRAND EST

615 rue du Jardin Botanique  
CS20101  
54603 Villers-lès-Nancy Cedex

## C modulaire

**Résumé :** Nous proposons une extension au langage de programmation C, nommé *C modulaire*. Elle consiste en ajoutant une poignée de directives et d'un schéma de nommage à transformer des unités de traduction traditionnelles en *module*. La modification au langage-même est minimale, car nous y ajoutons une seule nouvelle caractéristique, les identifiants composés. Nos modules peuvent importer d'autres modules tant que la relation d'import reste acyclique et un module peut référer à ses propres identifiants et ceux des modules importés à l'aide d'abréviations librement choisis. Autre que l'*include* traditionnel, notre directive d'import assure l'encapsulation complète entre modules. Le schéma d'abréviation permet de facilement remplacer un module importé par un autre qui réalise la même interface. En plus à l'export de symboles nous fournissons l'injection de code paramétré par l'importation de *snippets*. Ceci implante un mécanisme de réutilisation de code, similaire au *X-macro* ou *template*. Des outils supplémentaires que propose notre approche sont un schéma d'initialisation, un approche structuré à la bibliothèque standard de C et un chemin de migration pour des projets de logiciel existants.

**Mots-clés :** C, modularité, encapsulation

## 1 Introduction

Since decades, C is one of most widely used programming languages, see [1], and is used successfully for large software projects that are ubiquitous in modern computing devices of all scales. For many programmers, software projects and commercial enterprises C has advantages (relative simplicity, faithfulness to modern architectures, backward and forward compatibility) that largely outweigh its shortcomings.

Among these shortcomings, is a lack of two important closely related features: modularity and reusability. C misses to encapsulate different translation units (TU) properly: all symbols that are part of the interface of a software unit such as functions are shared between all TU that are linked together into an executable.

The common practice to cope with that difficulty is the introduction of naming conventions. Usually software units (referred as *modules* in the following) are attributed a name prefix that is used for all data types and functions that constitute the programmable interface (API). Often such naming conventions (and more generally coding styles) are perceived as a burden. They require a lot of self-discipline and experience, and C is missing features that would support or ease their application.

A lot of examples for “modularity by convention” are already present in the C standard itself. To apprehend the difficulty let us try to make a complete list of the conventions that the C standard enforces in view of the modularity of its own library.

It reserves the prefixes **str**, **mem** and **wcs** (for string and byte functions), **mtx\_**, **cnd\_**, **tss\_** and **thrd\_** (for the thread interfaces), **is** and **to** (for character classification and conversion), **E** (for error codes), **FE\_** (for the floating point environment), **PRI** and **SCN** (for IO formats), **LC\_** (for locales), **atomic\_** and **memory\_** (for atomic types and functions), **TIME\_** (for time zones), **SIG** (for signals). In addition it also reserves prefix-suffix combinations **[u]int.\*\_t** (for integer types) and **[U]INT\_{MAX|MIN|C}** (for integer macros), and the long list of names of C standard functions (for use as external symbols).

We propose a new tool, *Modular C*, that generalizes this approach by systematically adding name prefixes to the symbols that are exported by a translation unit. A number of simple rules and compiler *directives* are provided to facilitate the usage of this modular naming structure and helps to assemble software projects seamlessly and efficiently.

### Overview

This paper is organized as follows. In the continuation of this introduction we will attempt to make our point about the two defaults that we try to tackle, namely lack of modularity and reusability. Then we will argue why C needs a specific approach to overcome these deficiencies and summarize our contributions. Section 2 will then introduce our main concept, a modestly improved naming scheme for identifiers that are exported by a module. Import of features from other modules, Section 3, is then organized simpler and stricter than in common C. As a result, the modular organization of projects is simplified and consistent module initialization can be guaranteed. Reuse of small software components (“snippets”) is then introduced in Section 4. All this leads to a formal description of a translation procedure from *Modular C* to common C,

that can be proven to be correct, Section 5. The presentation of our new approach is completed by providing a structured view of the C library, Section 6, and by discussing the transition to *Modular C* in terms of a reference implementation and migration paths for existing projects, Section 7.

### 1.1 Lack of modularity

The example of C's handling of its own library API already shows all weaknesses of the approach:

**It is intrusive:** Other software projects that include C library headers just have to cope with the naming choices that have been made, there. If my module declares functions `top` or `strip` it might be in conflict with functions in `ctype.h` or `string.h`. Such problem might only become visible much later when the C standard evolves, or when my program is linked against a new implementation of the C library.

**It is inconsistent:** Some reserved names include an underscore, only reserve if the prefix is followed by uppercase, add a suffix such as `_t` ... Some of the reserved names are **struct**, **union** or **enum** tags, some are just plain identifiers.

**It is illegible:** The rules are difficult to apprehend and to memorize. They form an superfluous hurdle for beginners and occasional programmers with the C programming language.

**It is ever growing:** The C standard evolves from version to version (as most software interfaces) and adds constraints to the above list.

**It is incomplete:** The C standard headers define naming components, namely **struct** fields, that are not protected by the above rules.

For the latter, no “official” rule forbids an application module to define a macro `tv_sec` which could badly interact with **struct timespec** from `time.h`. A conflict here may only appear when a third party project attempts to combine that module with some timing code. Other potential conflicts concern identifiers that are used as parameter names for function prototypes or for **inline** functions. A parameter named `string` could interact with another macro definition. Such a definition could come from another completely independent module or from a future version and implementation of the C standard library that introduces it in `strings.h`.

Other commonly used interfaces such as the POSIX operating system API add to that Babylonian disorder by reserving other prefixes (such as `pthread_` for threads) or suffixes (`_t` for **typedef**) or by using the same name as a **struct** tag and a function (`stat`). All of this makes the usage of the C library quite tedious, but occasionally is also at the origin of errors in implementations of the C library itself: avoiding the pollution of the application name space requires a continuous struggle with feature macros and include guards.

## 1.2 Lack of reusability

In addition to these issues about mutual identifier space pollution, C fails to provide the necessary infrastructure for painless code reuse. Common strategies to ensure reusability are:

**Type-agnostic functions:** The C standard itself defines generic interfaces for searching and sorting (**bsearch** and **qsort**) that take data as pointers to **void** and comparison functions as **int (\*)(void const\*, void const\*)**. This doesn't lead to real source code sharing but basically only switches off the type system to apply the same type agnostic binary to different application types.

**Macros:** Complicated software systems such as the Linux kernel<sup>1</sup> or the Boost preprocessor library<sup>2</sup> define parameterized data structures such as lists through a set of macros. The major drawback of this approach is that it quickly leads to code that is difficult to read, to apprehend, to maintain and to interface, and that may lead to replication of side effects.

**X macros:** This consists of writing small parameterized code snippets in `.c` files. These provide *e.g.* function definitions that can be repetitively included into other source. Parameterization of such code is effected by defining some specific macros before the include and undefining them right after, see [6]. Boost<sup>3</sup> partly exploits that technique. This approach is probably the most readable of the three (the file contains normal C code) and also is the safest of the three techniques listed here. Nevertheless it has not found much use in the field. It is syntactical odd and disruptive on the user side. Preprocessor **#define**, **#include** and **#undef** are leaked in the implementation part of the user code. The need to provide separate declarations and definitions doubles the maintenance overhead.

## 1.3 C needs a specific approach

Many approaches have been proposed over the years to address these or similar odds. They may be split into two different categories. The first are *rule sets* that are provided by coding style and enforcement strategies. They are used to restrain possible use of language constructs for *information hiding*, and thus to control the mutual impact that different modules may have. Most prominent among the coding styles is probably the Linux coding style [8]. Such coding rules then can be made sound and effectively enforceable as has been shown by [7]. To our opinion these rule based approaches are only going half the way. They don't give the necessary tools for real encapsulation or code reuse and they leave the burden of naming conventions to the programmer. Our own approach here extends and improves such *rule sets* and should be compatible with most common practice. It is in particular compatible with the rules of [7], so all proven properties of that approach also apply to ours.

<sup>1</sup> <http://kernelnewbies.org/FAQ/LinkedLists>

<sup>2</sup> [http://www.boost.org/doc/libs/1\\_57\\_0/libs/preprocessor/doc/index.html](http://www.boost.org/doc/libs/1_57_0/libs/preprocessor/doc/index.html)

<sup>3</sup> [http://www.boost.org/doc/.../topics/file\\_iteration.html](http://www.boost.org/doc/.../topics/file_iteration.html)



As another approach many new “C-like” compiled programming languages have been defined over the years. Most prominent among these are certainly C++, Objective-C and Java that in the advent of the concept of object oriented programming provided better encapsulation and code reuse. Whereas these languages have found a large distribution, they were only able to take a partial share in the software market. All three have the disadvantage that they are much more complex than C. They add multiple language constructs to a core that is similar to C, but provide no (or tedious) migration paths for existing software, infrastructure or developers.

Recently there have been efforts to provide a common modular framework for all three language siblings C, C++ and Objective-C, see [2]. Whereas that proposal tackles and solves problems with the include hierarchy it seems to add an extra layer of semantic complexity. Most importantly it doesn’t address nor solve one of the major problems that we have identified above: the lack of mutual encapsulation of TU of any of the target languages.

Google’s *Go* (also sometimes referred as *Golang*) has gone a different path by introducing a new programming language, see [5], that addresses most if not all of the issues that we mention above. Here, we are particularly interested in its import feature that has been one of the seeds of this work.

But unfortunately also, by design *Go* is a rupture. C on the other hand owes much of its success to the fact that it cautiously watches to be backward and forward compatible: conforming code that worked 10 or 20 years ago still works today and will most likely still work as many years from now. For many, switching to a new programming language is not an option and this proposal here is intended to help to improve the C programming language with respect to the issues that we raised. The strong emphasis on compatibility still has allowed C to evolve constantly. As major new features C11 [4] integrated threads to the C library and atomics and type generic functions to the core language. Our proposal inscribes itself in that steady and constructive line of improvements that have been added to C.

The present proposal for “Modular C” shares a lot of ideas with the one’s mentioned above, but is meant to be much simpler. It is designed to be compatible with C’s core language and with the common coding practice in the C community. It only targets that one language, C, and its support library, alone. The other two languages targeted by [2] have their own proper features and problems concerning modularization and a mixed discussion easily misses specific features that have to be addressed. On the other hand, compared to the other two, C has a specific default, its lack of language infrastructure for consistent code reuse that must be improved.

#### 1.4 Our contributions

*Modular C* adds one main language feature (*composed identifiers*) and a handful of directives that provide an extension of the C language with the following properties:

**Encapsulation:** We ensure encapsulation by introducing a unique composed module name for each TU that is used to prefix identifiers for export. This creates unique global identifiers that will never enter in conflict with any identifier of another module, or with local identifiers of its own, such as function or macro parameters

or block scope variables. Thereby by default the import of a module will not pollute the name space of the importer nor interfere with parameter lists.

**Declaration by definition:** Generally, any identifier in a module will be defined (and thereby declared) exactly once. No additional declarations in header files or forward declarations for **struct** types are necessary.

**Brevity:** An abbreviation feature for module names systematically avoids the use of long prefixed identifiers as they are necessary for usual naming conventions.

**Completeness:** The naming scheme using composed identifiers applies to *all* file scope identifiers, that are objects, functions, enumeration constants, types and macros.

**Separation:** Implementation and interface of a module are mostly specified through standard language features. The separation between the two is oriented along the C notion of external versus internal linkage. For an **inline** function, the module that defines it also provides its “instantiation”. Type declarations and macro definitions that are to be exported have to be placed in code sections that are identified with a **declaration** directive.

**Code Reuse:** We export functionality to other modules in two different ways:

- by interface definition and declaration as described above, similar to what is usually provided through a C header file,
- by sharing of code snippets, similar to X macros or C++’s templates.

The later allows to create parameterized data structures or functions, easily.

**Code repetition:** The **foreach** and **do** directives allow simple code repetition at compile time. This is e.g useful to instantiate a number of functions for a list of values.

**Acyclic dependency:** Import of modules is not from source but uses a compiled object file. This enforces that the import relation between modules defines a directed acyclic graph. It can be updated automatically by tools such as POSIX’ **make** and we are able to provide infrastructure for orderly startup and shutdown of modules according to the import dependency.

**Interchangeability:** The abbreviation feature allows easy interchange of software components that fulfill the same interface contract.

**Optimization:** Our approach allows for the full set of optimizations that the C compiler provides. It eases the use of **inline** functions and can be made compatible with link time optimization.

**C library structure:** We provide a more comprehensive and structured approach to the C library.

**Extendability:** Our approach doesn’t interfere with other extensions of C, such as OpenMP or OpenCL.

**Migration path:** We propose a migration path for existing software to the module model. Legacy interfaces through traditional header files can still be used for external users of modules.

■ **Listing 1** A module that exports two symbols and a type.

```

1 /* The following declarations are exported */
2 #pragma CMOD declaration
3
4 /* Exports proj::structs::list::head */
5 struct head {
6     proj::structs::element* first;
7     proj::structs::element* last;
8 };
9
10 /* From here only exported if external linkage. */
11 #pragma CMOD definition
12
13 void say_hello(void){
14     C::io::puts("Hello_world");
15 }
16 static unsigned count;
17 static void say_goodbye(void){
18     C::io::printf("on_exit_we_see_%u", count);
19 }
20 head* init(head* h) {
21     if (h) *h = (head){ 0 };
22     return h;
23 }
24 /* Exports proj::structs::list::top, no conflict with ctype.h */
25 double top(head* h) {
26     return h->first.val;
27 }

```

## 2 All is about naming

In its simplest form, our proposal just formalizes a common approach that is used for C projects. It uses a *name prefix* (the module name) to specify the membership to a module and to access other software components, see Listing 1 for an example. A C module chooses itself a composed name, and may then be imported by other modules through that name. The module name and names of imported modules may be deduced implicitly, or, alternatively, they can also be specified explicitly:

```

#pragma CMOD separator ::
#pragma CMOD module proj::structs::list
#pragma CMOD import ...:element
#pragma CMOD import C::io

```

This sets the module prefix to be composed of three identifier elements, namely `proj`, `structs` and `list`. Syntactically, the name components are separated by a token,

the *separator*, that may (with some restrictions) be chosen for each module. Here the **separator** directive uses the Unicode character `::`, but this could e.g. also be C++’s traditional namespace separator `::` or some other locale imposed character. The significance of the composition of such module names will be explained later in Section 3. For brevity we will omit all **separator** directives from other code samples.

The only additions of *Modular C* to the code are *directives* and composed identifiers, no keywords or constructions are added to the core language itself. We have chosen to use the prefix **#pragma CMOD** for lines that contain directives, but this choice by itself is not essential for the feasibility of our approach.

In the above, all file scope identifiers of the module are visible to the outside with the prefix. E.g., our module implements a function `init` that is visible as `proj::structs::list::init`. If the imported module `proj::structs::element` in turn provides a symbol `init`, our module can access that one through the universal name `proj::structs::element::init`, and no naming conflict occurs between the two modules.

Similar to C++’s strategy, all composed identifiers are *mangled* during compilation such that no naming conflict with other modules or standard headers can occur. Such mangling needs the notion of *reserved identifiers*. These are identifiers that no application code is allowed to use. For our purpose it is sufficient to target a particular subset of C’s reserved identifiers:

**Definition 1** *An identifier that starts with an underscore and is followed either by a second underscore or by a capital letter is strictly reserved.*

C reserves these for internal use of the compiler implementation and for future language extensions, such as had been done by introducing `_Bool` in C99 and `_Static_assert` in C11. Identifier starting with an underscore, followed either by a second underscore or by a capital letter are *strictly reserved*.

**Rule 2.0.1** *A module may not define any strictly reserved identifier or use it as a component of a composed name.*

As stated above, the C library then reserves a lot more identifiers for features that are interfaced via the different standard header files.

**Definition 2** *An identifier is reserved if it is strictly reserved, a keyword, or used to name a feature of the C library.*

Observe that we allow the use of “normal” identifiers that might also be used by the C library. In fact, there are two reasons for that. First, we want to ensure that *Modular C* modules may seamlessly compile with any future version of the C library. Then, we want to be able to propose different versions of C library functions in modules with equivalent interfaces, as e.g. a strict C library version of `printf`, `C::io::printf`, and an augmented version `POSIX::io::printf`.

**Rule 2.0.2** *A module may freely use any identifier that is not strictly reserved as a component of a composed name.*

This rule also applies to keywords (with some caution) and library function names. Also, the identifier **main** loses its special meaning when used in a module. Instead, optionally an entry point is declared via a directive:

```
#pragma CMOD entry unit_test
```

This declares a semantic similar to traditional **main**, and indeed the identifier **main** may even be used to that same purpose. The function `unit_test` must have a prototype that is equivalent to one of the following:

```
RT unit_test(void);
RT unit_test(int argc, char*argv[argc+1]);
RT unit_test(int argc, char const*argv[argc+1]);
RT unit_test(int (*argc), char* (*argv)[argc+1]);
```

and where `RT` is either **int** or **void**. Any valid identifier with a suitable prototype can be chosen as entry point. This also includes the module-local identifier **main**, or function names from other modules.

## 2.1 Exported features

A traditional C header file can provide access to a number of different *features*: constants, types, macros, objects and functions. To simplify the life of the user of C modules and to ease encapsulation we have the simple rule:

**Rule 2.1.1** *All the exported features of a module  $M$  correspond to a composed identifier  $M::L$  where  $L$  is not strictly reserved.*

In particular this means that all types are named with composed identifiers and that no exported feature uses a name that doesn't start with the module's name. In the following we go a bit into details how this rule is assured.

C already has a convention that regulates the export of symbols, namely the *linkage* of identifiers. If not specified otherwise, *Modular C* just follows and enforces this concept.

**Rule 2.1.2** *A module exports all its identifiers that have external linkage.*

*E.g.*, the module of Listing 1 exports `proj::structs::list::say_hello`, but the identifiers `proj::structs::list::say_goodbye` and `proj::structs::list::count` are not exported since they are declared **static**. In addition it uses the imported identifiers `C::io::puts` and `C::io::printf` from the module `C::io`.

This can be seen as an extension of the “one definition rule”:

**Rule 2.1.3** *The definition of an identifier also serves as its unique declaration.*

The first advantage that we obtain from this is that we don't have to separate a header (".h" file) from the code of the translation unit.

**Rule 2.1.4** *Identifiers are imported with the type of their definition.*

So far we may easily decide for global variables and functions if they are visible by exporters or not. If they are declared **static** they are local to the module, otherwise they are exported. Other identifiers (types and macros) are only exported if we say so, explicitly:

**Rule 2.1.5** *Identifiers without external linkage are exported iff they are in a declaration section.*

This can be done by placing a **declaration** directive in the source as shown. All code after a such a directive, before the next **definition** directive, should only be declarations or definitions similar to the ones found in a traditional header file. So typically, such declaration sections only consist of type declarations (**typedef**, **struct**, **union** or **enum**) and definitions of macros or **inline** functions. Similar to C++, Modular C overcomes the distinction between “tag” name space from an identifier name space.

**Rule 2.1.6** *All **struct**, **union** or **enum** declarations give rise to **typedef** that are implicitly inserted.*

*E.g.*, for Listing 1 we can assume that the **struct** declaration itself is preceded by

```
typedef struct head head;
```

to declare the tag name and identifier at the same time. This means in particular, that the identifier `head` cannot be reused in file-scope to refer to a different entity than the **struct head** type.<sup>4</sup>

**Definition 3** *A **typedef** of an identifier *ID* is canonical if is of the form*

```
typedef {struct|union|enum} ID ID;
```

**Rule 2.1.7** *All tagged **struct**, **union** or **enum** declarations are accompanied by an appropriate canonical **typedef**.*

## 2.2 Avoiding identifier clashes

The function `top` that is defined at the end of Listing 1 shows another feature. It is only visible as `proj::structs::list::top` to the outside. So no naming conflict can occur with C library header `ctype.h` which reserves the prefix `to`. Generally, this feature allows us to reuse all reserved names of the C library, locally, and in general to decide freely on names inside a project. They will never conflict with names of other projects, as long as the chosen module names differ.

This makes it easier to provide extensions to the C library, *e.g.*, the POSIX standard extends C by adding features to C library functions such as **printf**, much as it reads in traditional C. Within *Modular C* any extension can do that freely, if it uses its own module name space. Importers may use the two different versions of such

<sup>4</sup> Duplicating a **typedef** is allowed in C since C11.

functions simultaneously as long as they use prefixed names, such as `C::io::printf` and `POSIX::io::printf`.

For the C library itself, this approach is more flexible, too. Currently, the C library already has several groups of functions that provide the same functionality for different base types, such as the `fabs/cabs` or `strlen/wcslen` functions. In the case of `fabs`, there are even two “functions” with the same name, one that is provided by `math.h` and the other that is included by `tgmath.h`

With our approach, the C library can provide different modules to implement interfaces to real and complex floating point functions. We introduce six modules `C::real::float`, `C::real::double`, ..., `C::complex::ldouble` for the type specific functions from `math.h`. Any of these modules has a function that locally is named `abs` and that replaces `fabsf`, `fabs`, ... `cabsf`. The type generic function `fabs` from `tgmath.h` can be superseded by an identifier `abs` in `C::math` that interfaces all the above and analogous functions for integer types with a type generic macro.

```

1 #pragma CMOD module          C::math
2
3 #pragma CMOD declaration
4 /* Exports a type generic abs for
5    arithmetic base types. */
6 #define abs(X) _Generic((X)+0, \
7     float: C::real::float::abs, \
8     double: C::real::double::abs, \
9     /* more cases */          \
10    )(X)

```

To finish this part we summarize what it means for a type or an identifier to be exported by a module.

**Definition 4** A type definition or forward declaration is exported by a module  $M$  iff it is found in a **declaration** section. If the type is a **struct**, **enum** or **union** type with tag name  $X$ , it is exported with tag name  $M::X$ .

**Definition 5** A file scope identifier  $X$  is exported by a module  $M$  as composed identifier  $M::X$  iff one of the following conditions holds:

- $X$  is an object or function that is defined with external linkage.  $M::X$  then refers to the same object and has the same type as  $X$ .
- $X$  is declared or defined in a **declaration** section.
  - $X$  is an object or function that is defined with internal linkage. For each importing module  $N$ ,  $M::X$  then refers to a specific object or function in  $N$  with internal linkage and has the same type, storage class, definition and initialization (if any) as  $X$ .
  - $X$  is a **typedef** name. Then,  $M::X$  is an alias to same type as  $X$ .
  - It is an enumeration constant. Then,  $M::X$  is an enumeration constant of the same value as  $X$ .
  - $X$  is a macro. Then,  $M::X$  is a macro with an expansion identical to the one of  $X$ .
  - $X$  is the tag name of a **struct**, **union** or **enum** type.  $M::X$  then is an alias to the corresponding type with tag name  $M::X$ .

■ **Listing 2** The module of Listing 1 with abbreviations.

```
1 #pragma CMOD module head = proj::structs::list
2 #pragma CMOD import elem = ...:element
3 #pragma CMOD import io = C::io
4 #pragma CMOD import printf = io::printf
5 #pragma CMOD import puts = io::puts
6
7 /* The following declarations are exported */
8 #pragma CMOD declaration
9
10 /* Exports proj::structs::list */
11 struct head {
12     elem* first;
13     elem* last;
14 };
15
16 /* From here on, only exported if
17     external linkage. */
18 #pragma CMOD definition
19
20 void say_hello(void){
21     puts("Hello_world");
22 }
23 static unsigned count;
24 static void say_goodbye(void){
25     printf("on_exit_we_see_%u", count);
26 }
27 head* init(head* h) {
28     if (h) *h = (head){ 0 };
29     return h;
30 }
31 /* Exports proj::structs::list::top,
32     no conflict with ctype.h */
33 double top(head* h) {
34     return h->first.val;
35 }
```

### 2.3 Abbreviations

So far the gain we have achieved with our approach is that we avoid code duplication for identifiers with external linkage, reflected in Rule 2.1.3, and that we are better able to encapsulate functions that represent similar features. Otherwise the grammatical complexity of the code that this allows to write is similar to the traditional prefix convention for C identifiers. Listing 2 introduces another functionality, *abbreviations*. It



can be applied to every imported module and to the module name itself. It is inspired by a similar feature of the *Go* programming language. With

```
#pragma CMOD import elem = ...::element
```

we introduce a shortcut for referring to the identifiers of the imported module. The symbol `proj::structs::element::init` can now be referred as `elem::init`.

**Rule 2.3.1** *Imported features can be accessed with two component names as `abbrev::name` where `abbrev` is a short prefix that is chosen by the importer and `name` is the local name given by the exporting module.*

The **import** directive

```
#pragma CMOD import printf = io::printf
```

allows to refer to the C library IO function as **printf**. This gains modularity. To partially or fully replace C's IO module by POSIX', we just have to replace the corresponding import directives. For a partial replacement of **printf** we could use:

```
#pragma CMOD import printf = POSIX::io::printf
```

For a full replacement of the whole `io` module we could use:

```
#pragma CMOD import io = POSIX::io
```

Provided that the function prototypes are compatible, no other code change is necessary.

## 2.4 The module name

Inside the module, all names exported by it are usually referenced through their short name, e.g., `init` as we introduced it above. But the name `proj::structs::list::init` could equally be used. There is one particular composed identifier of special interest, the module name itself. This identifier, such as `head` above, can freely be used to put emphasis on one particular feature that is central for the module. For a first example, let us suppose that our "element" module exports a **struct** type:

```
1 #pragma CMOD module proj::structs::element
2 #pragma CMOD declaration
3 /* Exports proj::structs::element */
4 struct proj::structs::element {
5     double data;
6     proj::structs::element* next;
7 };
```

With an abbreviation `elem` the code simplifies:

```
1 #pragma CMOD module elem=proj::structs::element
2 #pragma CMOD declaration
3 /* Exports proj::structs::element */
```

```

4 struct elem {
5     double data;
6     elem* next;
7 };

```

As Listing 2 has shown, using the module name for the **struct** declaration then eases the use of that **struct** by the importer, here through the same abbreviation **elem**.

**Rule 2.4.1** *The composite name of a module  $M$  can be referred to by the abbreviation given by an **import** or **module** directive.*

Similar holds for the name of the module in Listing 2 itself. The structure that had been exported as **proj::structs::list::head** in Listing 1 is now accessible as **proj::structs::list**, thereby reflecting the idea that this is the main data type this module is about. All users of the **list** module can easily use an “object centered” syntax to access the data type and its functions:

```

1 #pragma CMOD module  another_project::doit
2 #pragma CMOD import  list = proj::structs::list
3
4 list* pop_or_push(list* l, double a) {
5     if (l && l->data == a) {
6         l = list::pop(l);
7     } else {
8         l = list::insert(l, a);
9     }
10    return l;
11 }

```

This use of the module name is not limited to types. *E.g.*, a function can be in the center of interest of a module: a module **C::lib::rand** that interfaces the C library function **rand** as **C::lib::rand** may export the function **srand** as **C::lib::rand::set** and the macro **RAND\_MAX** as **C::lib::rand::MAX**.

```

1 #pragma CMOD module    rand = C::lib::rand
2 #pragma CMOD declaration
3 int rand(void);
4 int set(unsigned int seed);
5 #define MAX C::lib::RAND_MAX

```

Another example could be to add integral and derivatives to a numerical function:

```

1 #pragma CMOD module    func = proj::func
2 double func(double x){ ... }
3 double func::deriv(double x){ ... }
4 double func::integ(double low, double high){ }

```

## 2.5 Composing names on a finer granularity

Modular C uses a second character that separates identifier components.

```

1 #pragma CMOD composer –
2 #define macro-0() macro-1("empty")
3 #define macro-1(S) macro-2(5, S)
4 #define macro-2(N, S) /* do something with N and S */

```

This provides a simple tool to parameterize local names that share some properties. This avoids to force a particular choice of naming convention to the importer. If an importer chooses e.g a composer  $\square$ , the above can be accessed as `macro $\square$ 0`, `macro $\square$ 1` and `macro $\square$ 2`.

Below, this scheme will also be use to distinguish certain identifiers when they are imported from so-called “snippets”.

## 2.6 Mangling

To be able to set up some formal proofs for the validity of our approach, see Section 5, we have to specify how we will ensure that all file scope identifiers are encapsulated.

**Definition 6** Let  $S$  the source character set of a C platform,  $:: \notin S$ , and  $\widehat{S} = S \cup \{::\}$ .

1. An identifier  $N \in S^*$  is valid for a platform if it complies to a length restriction that the platform may impose.
2. A string  $\widehat{N} = N_0 :: N_2 \cdots :: N_{n-1} \in \widehat{S}^*$  is a valid composed identifier if  $N_0, \dots, N_{n-1} \in S^*$  are valid identifiers. Such a valid composed identifier is reserved if either  $n = 1$  and  $N_0$  is reserved or if  $n > 1$  and any of the  $N_0, \dots, N_{n-1}$  is strictly reserved.
3. A function  $f : (S \cup \{::\})^* \mapsto S^*$  is a valid mangling if it is injective and if the image under  $f$  of any non-reserved valid composed identifier is not a reserved identifier.

Observe that this definition allows that composed names with two or more parts may contain identifiers such as `int`, `printf` etc. that would otherwise be reserved by the core language or the library. It also disallows that a mangling accidentally maps a composed identifier to one that would be used by the C library.

For languages such as C++, many different functions have traditionally been used for mangling. In contrast to the requirement in 3 they usually map to reserved identifiers. This is because they have to ensure that non-reserved names that are defined elsewhere with `extern "C"` binding cannot clash with mangled names. *Modular C* implements complete encapsulation and has no mechanism to introduce “unmangled” names, so we don’t need such a property, here.

On the other hand, we only require a mangling to map to non-reserved names because it makes our proofs simpler. Even in our reference implementation we use a derivation of such a function that is often used for C++ name mangling. It maps the identifiers  $N_i$  as of the definition to a concatenation of strings  $M_i = \ell_i N_i$  where  $\ell_i$  is the length of  $N_i$ , prefixed and postfixed by `_ZN2_C` and `E`, respectively. E.g. `C::real::double::minv` is mapped to `_ZN2_C1C4real6double4minvE`. By construction

this function is injective. The prefix `_ZN` ensures it can effectively be identified by the tools of our platform as a composed identifier. Identifiers with such a prefix are in fact strictly reserved and could theoretically clash with other internal identifiers of the platform. Any implementation of *Modular C* that uses reserved identifiers for mangling should ensure that this is not the case, and in particular that the mangling doesn't produce identifiers that are used by its C library. Equally, any mangling should ensure that none of the identifier patterns that are listed in Section 7.31 of the C standard, "Future library directions", are in the image of  $f$ .

**Definition 7** For a conforming C source  $P$  and a mangling  $f$ , the mangled source  $f(P)$  is the source file that results from a replacement of all non-reserved identifiers  $N$  in file scope that are not keywords by  $f(N)$ .

**Definition 8** For a conforming module  $M$  and a mangling  $f$ , the mangled module  $f(M)$  is the C source file that results from the application of the following:

1. remove the snippet, if any,
2. replace all abbreviations by the corresponding composed identifiers,
3. prefix all non-composed file scope identifiers by the module name,
4. replace all non-reserved composed identifiers  $N$  that are not keywords by  $f(N)$ .

### 3 The import graph

The composed name of a module also determines some of the other modules that it imports, its parent modules.

**Rule 3.0.1** A module implicitly imports all modules that have a name that is a prefix of its name.

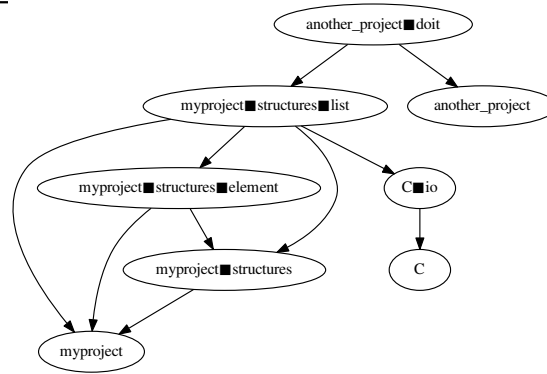
E.g., implicitly by its naming, module `proj::structs::list` imports `proj` and `proj::structs`. Then, with the `import` directive it explicitly imports `proj::structs::element`.

Consider `another_project::doit` from above as an example. It gives rise to the directed import relationship that is depicted in Figure 1.

**Rule 3.0.2** The import relation is transitive, that is if module  $A$  imports  $B$  it imports also all modules that  $B$  imports.

Claiming full transitivity of imports differs from *Go*'s strategy. There, an import of a module  $B$  only provides the necessary information to use all interfaces of  $B$  and not more. This would be a possibility for C, too, that information could be directly stored in the compiled object of  $B$ , much similar as *Go* does this.

We have not adopted such a restricted approach for several reasons. First, it is difficult to implement. It would necessitate to write or integrate a full parser for the language into our front end, whereas the approach presented here is mostly text replacement of composed identifiers. Modular C can mostly be implemented with scripting as provided by the POSIX utility `sed`, see Section 7.1, below. Keeping



■ **Figure 1** The import dependency graph of the example module

track of the contents of the import relation would add a lot of complexity to the implementation of Modular C and probably worsen compile times substantially.

Second, forcing transitivity ensures that our approach is consistent with the rules of [7] for modularity and information hiding: all our explicit or implicit interface inclusion ensures that we only have what they call *horizontal dependency* and that there is no *vertical dependency*.

Then, *Go*'s main motivation for its restrictive strategy comes from observing the large compile time overhead that C++ include hierarchies impose on software projects: there, include files tend to be monolithic, they include an exponential number of other files themselves, and the language is difficult to parse. Some declarations may incur an exponential computational overhead at compile time.

This situation is not at all comparable for C. C compilers nowadays are able to parse C headers extremely fast. Their bottleneck usually is code generation and optimization, and so the problem that had been observed for C++ doesn't apply to C.

### 3.1 Import is binary

As already mentioned, the import feature is not expected to work source to source.

**Rule 3.1.1** *The import of a module uses a compiled object.*

For our reference implementation we chose the POSIX archive file format to store some textual information along with the object file.

With that property a software project only has to provide the compiled objects of its modules to its clients. This then enables them to link and execute executables that use that module. But since all interface information is present in the compiled object, they also may compile their own code that would use such a module. In that sense, any binary distribution of modules is, with our model, also a development distribution.

As a direct consequence we have the following rule:

**Rule 3.1.2** *The import dependency graph for any module must be acyclic.*

■ **Listing 3** A module with an initialization function.

```
1 #pragma CMOD module      proj::something
2 #pragma CMOD import  thrd = C::thrd;
3 #pragma CMOD import  mtx  = thrd::mtx;
4
5 #pragma CMOD startup  start
6
7 #ifndef thrd::NO_THREADS
8 mtx bkl;
9 void start(void) {
10     mtx::init(&bkl, mtx::recursive);
11 }
12 #else
13 void start(void) {
14     // empty
15 }
16 #endif
```

This property is easily checked by build tools such as POSIX' `make`. It also has the advantage that on a source level we have no need for include guards or similar mechanism that deal with cyclic dependencies.

**Rule 3.1.3** *There is a topological sort of the dependency graph.*

Later, in several places we will assume that one such topological sort among all the possible ones is given and fixed.

**Rule 3.1.4** *All exported symbols of all modules of the import dependency graph are accessible.*

The reason behind this rule is simple: a module `a::b::c` that appends a new naming component `c` to an existing module `a::b` is supposed to extend that module. To extend it,

- it potentially needs all identifiers that are exported by `a::b`, and
- it must not provide conflicting definitions for objects that are already defined there.

In particular the identifier `a::b::c` could already have a definition or declaration in the parent module `a::b`.

The syntax for importing other modules makes no reference to a source file name for a module. Such a detail is left to the implementation. Our reference implementation separates name components with a hyphen.

### 3.2 Module initialization and cleanup

The strict dependency relation between modules also let us provide secondary features, module initialization and cleanup. Such features may be helpful for file scope objects

that need to be initialized dynamically; C doesn't allow to call functions to initialize statically allocated objects. This feature is achieved by a **startup** directive:

```
#pragma CMOD startup start
void start(void) { ... }
```

If such a directive is given, the function is guaranteed to be executed *before* accessing any symbol (variable or function) of the module, and *after* all such **startup** functions are executed for all imported modules. Such a function must have a prototype as indicated in the example.

**Rule 3.2.1** *The functions listed in **startup** directives of all modules of a program are executed before the **entry** function, and this in an order that is consistent with the import graph.*

Consider Listing 3 as an example. Here a module that needs a global mutex variable `bkl` to regulate access to some of its functions initializes that mutex with a non-default property `mtx::recursive`. If e.g, the module `C::thrd::mtx` would need by itself a similar form of initialization, such an initialization is done before. By that the call to `mtx::init` is always guaranteed to operate in a well defined context.<sup>5</sup>

In contrast to this approach, the C standard offers the type **once\_flag**. Our approach has the advantage that it has only an overhead at startup of the application, where all the **startup** functions are called. Thereafter, during the execution of the program itself there is no overhead at all and an application has the guaranty to start all its operations in a well defined state.

Our approach is also different from the approach in C++. There, statically allocated objects can be initialized dynamically with a function, but the execution order of these initializations is not prescribed by the standard. Thus C++ makes it quite difficult to provide a consistent initialization of static objects, as soon as there are dependencies between them.

To complement this approach for initialization we also propose two other interfaces, named after the C library functions **atexit** and **at\_quick\_exit** that they use under the hood.

```
#pragma CMOD atexit module_atexit
#pragma CMOD at_quick_exit module_at_quick_exit
void module_atexit(void);
void module_at_quick_exit(void);
```

These are executed when the program terminates.

**Rule 3.2.2** *The functions named in **atexit** and **at\_quick\_exit** directives of all modules of a program are inserted as **exit** and **quick\_exit** handlers before the **entry** function (as if inserted with the **atexit** and **at\_quick\_exit** standard library functions). The insertion is such, that the functions are executed in inverse order of the corresponding **startup** functions.*

<sup>5</sup> All of this is only done conditionally, `C::thrd::NO_THREADS` will be explained in Section 6.3.

## 4 Code sharing

In addition to the interface sharing between modules that we described so far, we provide a second mechanism of direct code sharing through *code snippets*. This will be different from making a function body of a particular function of the context *exporter* visible to the importer. As we already have mentioned the existing approach of C with **inline** does that suitably well. We ease the use of that mechanism by emitting the corresponding function symbol in the module that contains it.

### 4.1 Snippets

We propose a formalism to share code that will give rise to *different* functions (macros, types, constants ...) in the context of the *importer*. Let us start with a simple module `C::snippet::init` whose only purpose is to share code for a uniform `init` function with the importer.

```

1 #pragma CMOD module init = C::snippet::init
2
3 /* All code hereafter is integrated by the importer. */
4 #pragma CMOD snippet T = complete
5 T* init(T* x) {
6     if (x) *x = (T){ 0 };
7     return x;
8 }

```

The **snippet** directive introduces a local name, here `T`, that stands for the name of the importing module. The indication **complete** on the right requires that this module name corresponds to a complete type. The function that is defined tests if its argument `x` is a valid pointer and then initializes the object with the zero-initialized *compound literal*.

**Rule 4.1.1** *There is at most one **snippet** directive in the source of a module.*

**Rule 4.1.2** *The source code of snippets is integrated in declaration order at the end of the importing module.*

The later implies that a snippet is handled twice during compilation for Modular C. First, it is seen during the compilation of the module that exports it. It is then set aside in the binary archive for a later integration to importers. Then, on import the snippet is integrated source to source into the importer. The native C compilers can then detect errors or inconsistencies during this source to source integration.

**Rule 4.1.3** *The identifier (if any) that is specified in the **snippet** directive serves as an abbreviation for the name of the importing module.*

Listing 4 shows an example for three different types of imports of snippets. The first import for module `C::snippet::init`, as it is imported without an abbreviation, inserts all the symbols from the snippet into the importer. Here, this is just one function,



■ **Listing 4** A module that imports code snippets for two functions and a specialized type.

```

1 #pragma CMOD module toto = proj::structs::toto
2 /* Import three snippets. */
3 #pragma CMOD import          C::snippet::init
4 /* A snippet imported with an abbreviation. */
5 #pragma CMOD import bare     = C::snippet::alloc
6 /* A snippet with 3 slots that are filled. */
7 #pragma CMOD import vec      = C::tmpl::vector
8 #pragma CMOD defill vec::size = 23
9 #pragma CMOD fill   vec::vType = vec23
10 #pragma CMOD fill   vec::T     = toto
11
12 #pragma CMOD declaration
13 struct toto {
14     C::size counter;
15     /* your favorite data */
16 };
17 #define bare-init init
18
19 #pragma CMOD definition
20 static C::size _Atomic running = 0;
21 toto* alloc(void){
22     toto* x = bare-alloc();
23     if (x) x->counter = running++;
24     return x;
25 }
26 vec23 myState = { 4711, };

```

`init`. It is visible as a member of this module, namely as `proj::structs::toto::init`. The identifier `T` stands for the name of the importer and so the function has the prototype:

```
proj::structs::toto* proj::structs::toto::init(proj::structs::toto*);
```

## 4.2 Conflicting names in snippets

Generally, importing snippets as described so far may lead to naming conflicts if two different imported snippets use the same local identifier to name two different features. This can be mitigated by using the abbreviation feature of Section 2.3. Identifiers that originate from a named import receive that prefix as an additional name component, separated by the **composer**. So for the second import, the module `C::snippet::alloc` is imported with the abbreviation `bare`. Therefore all its imported symbols from the snippet will be prefixed by that abbreviation.

■ **Listing 5** A snippet module for a simple allocation function.

```

1 #pragma CMOD module alloc = C::snippet::alloc
2 #pragma CMOD import lib = C::lib
3
4 /* Integrate as-is to the importer. */
5 #pragma CMOD snippet T = complete
6
7 #pragma CMOD declaration
8 extern T* init(T*);
9
10 #pragma CMOD definition
11 T* alloc(void) {
12     return init(lib::malloc(sizeof(T)));
13 }

```

It is implemented in a similar way as `C::snippet::init`, see Listing 5, but provides two snippet symbols `init` and `alloc`. The first is only declared, the second is also defined. Note that the module `C::snippet::alloc` doesn't know much about the context in which the snippet function `alloc` will be placed by the import mechanism. It formulates an interface contract for `init` and enforces that the name of the importing module must be a complete type and that it must implement a function `init` with the specified prototype. Also note that this second part of the interface contract doesn't need special syntax. A standard C declaration of a function prototype is sufficient for its specification.

Because we have given an abbreviation when importing this module, the importer changes the imported identifiers to `bare-init` and `bare-alloc`, respectively. If it weren't for the `#define`, there would be four functions. But with the define, `proj::structs::toto::bare-init` is replaced by `proj::structs::toto::init` and effectively the `alloc` snippet will use the latter for its implementation of `bare-alloc`.

After such macro replacement the symbol `proj::structs::toto::init` is used with equivalent declarations in the snippets of both imported modules.

```

#define proj::structs::toto::bare-init proj::structs::toto::init
proj::structs::toto* proj::structs::toto::bare-alloc(void);
proj::structs::toto* proj::structs::toto::init(proj::structs::toto*);
proj::structs::toto* proj::structs::toto::alloc(void);

```

Also observe that the function `alloc` may even uses `bare-alloc` internally, no naming conflict occurs.

**Rule 4.2.I** *Snippets can be imported several times into the same module `M` if each `import` uses a different abbreviation.*

■ **Listing 6** The first lines of a module with a snippet with three slots.

```

1 #pragma CMOD module C::tmpl::vector
2
3 /* A default value for the size slot, below.          */
4 #define size 1
5
6 /* No requirement concerning the importer.           */
7 #pragma CMOD snippet none
8 /* Three slots parameterize the code.                */
9 #pragma CMOD slot vType = complete
10 #pragma CMOD slot T     = complete
11 #pragma CMOD slot size  = ice      /* has default */
12
13 #pragma CMOD declaration
14 typedef T vType[size];
15 ...

```

### 4.3 Slots

As we have seen in the last example, naming **imports** and redefining some prefixed names can be used to parameterize snippets.<sup>6</sup> By that snippets can even be imported several times with different prefixes and different definitions for some of their identifiers. But this mechanism is cumbersome, does not scale very well and lacks automatic verification.

To ease the parameterization of snippets there is a third mechanism with **slot**, **fill** and **defill** directives, see Listing 6 for an example. It is parameterized with three identifiers, its *slots*. Two of the them are expected to resolve to types (**complete**) and the other to an *integer constant expression* (**ice**). For the integration of such a snippet, these three identifiers must be replaced by three choices of the importer. Listing 4 shows how the three slots in the specification of `C::tmpl::vector` are filled:

<code>C::tmpl::vector</code>	<code>proj::structs::toto</code>
<code>vType</code>	<code>vec23</code>
<code>T</code>	<code>toto</code>
<code>size</code>	<code>value 23</code>

or with their full external names

<code>C::tmpl::vector</code>	<code>proj::structs::toto</code>
<code>C::tmpl::vector::vType</code>	<code>proj::structs::toto::vec23</code>
<code>C::tmpl::vector::T</code>	<code>proj::structs::toto</code>
<code>C::tmpl::vector::size</code>	<code>value 23</code>

<sup>6</sup> Here it the function `init` served as a parameter to `bare-alloc`.

Generally, all slots of all directly imported modules must be filled. If for example `T` would not be filled by an importer, a syntax error for the use of the identifier `C::templ::vector::T` would abort the compilation. But this mechanism can also be used to provide a default value for a slot. The module `C::templ::vector` globally defines the macro `C::templ::vector::size`. If an importer omits the slot `size`, the value 1 from that global definition is used.

Listing 4 shows two different directives to fill a slot, `fill` and `defill`. The first expects an identifier, the second, “`define fill`”, a token sequence that serves as a macro replacement.

In many points, this approach with snippets resembles the traditional *X macro* technique that we described above, but it has several advantages:

- The possibility of specifying certain types of requirements for the replacement.
- No consistent header declarations have to be maintained.
- There is no need to use conditional (`#ifdef`) compilation and `#undef`.
- Slots can have default values.
- A subsequent use of a snippet will not be polluted by symbols of a previous use.

**Definition 9** *A snippet is called a template if all the features that it specifies for the importer are named through **slot** directives.*

Or, stated otherwise, it is a template if it doesn’t pollute the name space of the importer.

Besides `complete` and `ice`, the declaration of a `slot` allows many other specifications, for example `global` (may not be overwritten), `intern` (for a per-import unique identifier), `startup` and `atexit` for startup and shutdown functions.

#### 4.4 Reach of snippets

Even though we have transitivity of the import relation, name spaces of modules are completely separated and don’t pollute each other. This property should be preserved if we use snippets. Therefore we ensure that any name that is imported from a snippet is indistinguishable from an identifier that was directly defined in the module itself. The snippet is fully “absorbed” by the module that imports it:

**Rule 4.4.1** *Any identifier `N` in `B` whose definition originates from a snippet-import for `A` in `B` is seen by any importer of `B` as if it were genuinely defined by `B`.*

If we would integrate snippets by transitivity, coding with them would become quite complicated. E.g. for Listing 4 this would have the consequence that a module `D` that imports `proj::structs::toto` would also define its own functions `init` and `alloc`. Consequently, the name spaces of `D` would be polluted with identifiers of which it has no control. In fact, the name space of a module `M` that indirectly imports a snippet from `A` should not be affected by any future changes of `A`, possibly without the author of `M` even being aware of the import.

**Rule 4.4.2** *The snippet of a module `A` is only integrated by an explicit import of `A`.*

## 5 A formal description

One of the advantages of our approach is that much of it can be described by text rewriting that allows for a formal proof of its validity.

### 5.1 Source reorganization and stability

As a first step we have to define the properties that we expect of a module:

**Definition 10** For a module  $M$  the completed source  $M^+$  is  $M$  to which all imported snippets are integrated in the order they appear in **import** directives.

**Definition 11** A module  $M$  is valid iff all of the following hold:

1.  $M$  fills all slots of imported snippets.
2.  $M$  uses a set of mutually distinct valid identifiers for all abbreviations and slots.
3. Besides the fact of using composed identifiers,  $M^+$  is syntactically correct C code.
4. No declaration of an exported feature of  $M^+$  depends on a non-exported feature.
5. After preprocessing,<sup>7</sup> the feature declarations of  $M^+$  are in dependency order.
6. Each identifier used by  $M^+$  is defined exactly once, either by  $M^+$  or by a module that it imports.
7.  $M^+$  uses local and imported identifiers, including tag names, according to their declaration.

With *Modular C* we want to reduce the need to explicitly specify header information and to have such information extracted automatically by a tool. Such an extraction would be very difficult, if we would allow arbitrary dependencies between macro definitions, type declarations and object declarations. Therefore we introduce a separation of a source in three conceptually different parts, for macro definitions, declarations (types, objects and functions) and definitions (objects and functions).

**Definition 12** For a conforming C source  $P$ ,  $\mathcal{P}(P)$ , the preprocessor extract, consist of all logical lines of  $P$  that are prefixed with **#** and that are not **#pragma** or **#line** directives.

In the two remaining extracts, **inline** functions are treated specially. If they are external, their definition has to appear in the declarative part (as in a traditional header file) and a **extern inline** has to appear in the definition part to enforce their instantiation. Internal **inline** functions have just to appear once in the declaration extract with a **static inline** definition.

**Definition 13** For a conforming C source  $P$ ,  $\mathcal{D}(P)$ , the declaration extract, consist of a preprocessed copy of  $P$  where all object definitions and all definitions of functions that are not **inline** are replaced by declarations that use appropriate **extern** or **static** linkage specification, and all **extern inline** declarations have been removed. In addition  $\mathcal{D}(P)$  starts with canonical **typedef** for all tagged **struct** and **union** types, and all tagged **enum** types are immediately followed by canonical **typedef**.

<sup>7</sup> C's compilation phase 4, see [4].

The third part contains the “rest” of the code of a source  $P$ , that is mainly object and function definitions. Observe that this definition only removes macro definitions, but leaves conditional preprocessor directives (**#if/#else**) in place.

**Definition 14** For a conforming C source  $P$ ,  $\mathcal{I}(P)$ , the definition extract, consist of a copy of  $P$  where

- All macro definitions and includes have been removed.
- All file scope **typedef**, **struct**, **union** or **enum** definitions are removed.
- All definitions of **static inline** functions have been removed.
- All remaining definitions of **inline** functions have been replaced by appropriate **extern inline** declarations that are not definitions.

**Definition 15** A conforming C source  $P$  is called stable if all the following hold:

1.  $P$  and the concatenation  $\mathcal{P}(P) \cdot \mathcal{D}(P) \cdot \mathcal{I}(P)$  are functionally equivalent.
2. It doesn't contain **#include** directives.
3. It doesn't contain explicit references to C library functions or objects.
4. If defined, **main** has prototype **int main(int argc, char\*[argc+1])** and no execution can reach the terminating `}` of the function body.
5. It doesn't use preprocessor operators **#** and **##**.
6. It doesn't use the reserved identifiers **\_\_func\_\_**, **\_\_LINE\_\_** or **\_\_FILE\_\_**.

Stability for a C source may look like a strong restriction, but it isn't much in our view. (2) and (3) stem from the fact that *Modular C* replaces **#include** directives by **import**. To be comfortable with the concept, the reader may just assume for the following discussion that all **#include** directives have already been applied to the code.

By the requirement in (1) and (2), all conditional compilation (with **#if** etc) only depends on predefined constants and on macros that are defined in  $P$  itself. This requirement imposes some discipline for the reuse of macros inside **#if/#elif** evaluation, and interferes with cases where a macro name is also used for a function. In most cases code with such macros can be sanitized. *E.g.* in the following, the declaration of the function and the macro definition cannot be interchanged.

```
double fabs(double a);
#define fabs(X)          \
    _Generic((X),        \
             default: fabs, \
             float: fabsf)
```

Thus this short code isn't stable. But the code can easily be sanitized:

```
#define fabs(X)          \
    _Generic((X),        \
             default: fabs, \
             float: fabsf)
double (fabs)(double a);
```

Placing the function name inside parenthesis for the declaration (and other places where it shouldn't expand) protects the identifier from macro expansion.

Another requirement in (1) that is perhaps not obvious, is that it forbids the definition of **struct**, **union** and **enum** inside object or function declarations or in macro expansions. Consider the following definition:

```
static struct { unsigned a; } x = { .a = 0 };
```

This would give rise to the following declaration in the declaration extract:

```
static struct { unsigned a; } x;
```

Having two **struct** definitions in  $\mathcal{D}(P) \cdot \mathcal{D}(P) \cdot \mathcal{S}(P)$  would be erroneous: if the **struct** is without tag name (as in this example) the two types are considered different and we have a redeclaration of **x** with a different type. If on the other hand we would add a tag name, we would have two definitions for the same **struct** type.

Such situations can be avoided easily by having all type definitions separated:

```
typedef struct { unsigned a; } type_of_x;
static type_of_x x = { .a = 0 };
```

Such code is then easily separated into declaration and definition extract.

Restrictions (5) and (6) have to do deal with “identifier aware” programs that would change their behavior if identifiers are mangled. Whereas the later restriction is mostly harmless, (5) may constrain the use of sophisticated macro packages. A program that would want to use these features would have to adjust longer output strings (for `__func__` e.g.) and prove equivalence of token concatenation and similar features with mangled identifiers.

Observe, that the use of canonical **typedef** in  $\mathcal{H}(P)$  implies that a tag name cannot be reused as another normal identifier, such as e.g.. POSIX does for **struct stat** and function **stat**. We view the difference of tag names and identifiers as a historic artifact, that has not much importance in modern code.

Also, remember that a conforming C source can be compiled into an object file, but may perhaps not lead to a valid executable: the source may refer to external identifiers that must be linked from other TU.

## 5.2 The replacement procedure

Figure 2 shows a formalized replacement procedure to compile a module into an archive file. It involves replacements of abbreviations, cut and paste of text chunks and name mangling. In addition to simple text replacement we need to generate the import graph and a topological sort of it (3), some code generation for some stub functions (9) and, most difficult, declaration extraction (7e).

The stub functions can be generated similar to Listing 7. By that each module exports an initialization function with local name `_ModuleInit` and eventually another one that contains a conventional **main**. The first calls all generated `_ModuleInit` functions for all imported modules (in topological order), and then (if any of the three are defined) inserts `module_atexit` and `module_at_quick_exit` in the appropriate queues and calls the modules’s own `module_startup` function. Here, as an example, this uses the C standard data type **once\_flag** to guarantee race freeness of the overall initialization.

1. Replace all occurrences of the string from the **separator** directive by `::`.
2. Extract all **separator**, **module**, **import**, **slot** and **fill** directives from the code.
3. Generate a top-sort of the import graph and store it in "MODNAME—imports.txt".
4. Replace abbreviations from **module** and **import** directives.
5. Split the code at a **snippet** directive into a *regular* and a *snippet* part.
6. In the snippet, if any, prefix all slot identifiers by `MODNAME::` and replace the snippet name by `_Importer`. Store the snippet in a file "MODNAME—snippet.c".
7. With the regular part:
  - a. To produce  $M^+$ , let  $S_i$ ,  $i = 0, \dots, n - 1$  be the snippets for  $M$ , listed as their appearance in **import** directives. For all  $i = 0, \dots, n - 1$ :
    - Replace slot names in  $S_i$  by their **fill** definitions.
    - Replace `_Importer` by `MODNAME`.
    - Append the snippet to the regular part.
  - b. Append predefined internal function and object definitions to  $M^+$ .
  - c. In  $M^+$ , prefix all remaining file scope identifiers by `MODNAME`.
  - d. Mangle all composed names to C source  $P = f(M^+)$ .
  - e. Extract  $\mathcal{P}(P)$ ,  $\mathcal{D}(P)$  and  $\mathcal{I}(P)$  and store  $\mathcal{P}(P) \cdot \mathcal{D}(P)$  as file "MODNAME.h"
  - f. In top-sort order, let  $\mathcal{H}_0, \dots, \mathcal{H}_{n-1}$  be the headers of imported modules. Compile the concatenation  $\mathcal{H}_0 \cdots \mathcal{H}_{n-1} \cdot \mathcal{P}(P) \cdot \mathcal{D}(P) \cdot \mathcal{I}(P)$  to an object file "MODNAME.o".
8. Store the created files in an archive "MODNAME.a".
9. Create the necessary stubs for entry point and initialization, compile them into separate object files and include them in the archive.

■ **Figure 2** The high level description of the replacement procedure for module `MODNAME`.

Implementations that don't provide the `C11` threads interface would have to use a mechanism that makes this at least asynchronous signal safe, e.g, by using a flag of type `sig_atomic_t`.

In addition, if the module defines an **entry** function, `EntryFunction`, say, we create a traditional **main** function as entry point to the program that just calls the module's `_ModuleInit` and then jumps to the modules `EntryFunction`.

In a first step, we have to show when mangling doesn't change the validity of a given C source. For the C compilation itself, before linking to an object file, the only thing that could prevent a valid mangling is *identifier inspection*, that is if a program refers and acts according to identifier names. There are only few tools in C that could be used for that purpose: preprocessor manipulations, when macro expansion uses the operators `#` or `##`, or a use of the reserved identifier `__func__` for a function name.

The following lemma follows directly from the definitions:

**Lemma 1** *Let  $f$  be a mangling and  $P$  be a conforming C source without composed identifiers and Modular C directives. Then  $P$  is stable iff  $f(P)$  is stable.*



- **Listing 7** Pseudo code for the stub functions that are generated during the replacement procedure: composed identifiers here have to be replaced by mangled ones, C library code should be replaced with code that implements the same effects directly with identifiers that are strictly reserved.

```

1 /* code compiled in a separate .o file , if needed */
2 static void _ModuleInitOnce(void) {
3     /* Init imported modules in topos. order */
4     IMPORT1::_ModuleInit();
5     IMPORT2::_ModuleInit();
6     ...
7
8     /* Any of the following three is omitted if
9        not provided in the module. */
10    atexit(MODNAME::module_atexit);
11    at_quick_exit(MODNAME::module_at_quick_exit);
12    MODNAME::module_startup();
13 }
14 void MODNAME::_ModuleInit(void) {
15     static once_flag = ONCE_FLAG_INIT;
16     call_once(&once_flag, _ModuleInitOnce);
17 }
18
19 /* code compiled in a separate .o file , if needed */
20 extern void MODNAME::_ModuleInit(void);
21 extern int MODNAME::EntryFunction(int argc, char*argv[argc+1]);
22 int main(int argc, char*argv[argc+1]){
23     MODNAME::_ModuleInit();
24     return MODNAME::EntryFunction(argc, argv);
25 }

```

In the following we will not specify the mangling  $f$  explicitly anymore. We will assume that a such a mangling  $f$  is given and fixed.

We are now able to prove the first property of our replacement procedure. It follows directly from the lemma above and from the fact that most of the replacement procedure doesn't apply if there are no *Modular C* directives.

**Lemma 2** *Let  $P$  be conforming without composed identifiers or Modular C directives. Then  $P$  is stable iff the replacement procedure compiles  $P$  to a valid archive file.*

Now if we have a valid archive file, we just have to worry what happens to the special functions that define entry points or similar.

**Corollary 1** *Let  $P$  be as above and stable such that it has an **entry** but no **startup** or **atexit** directives, and such that it makes no reference to any external symbols. Then the archive file can be linked to a valid executable that is functionally equivalent to  $P$ .*

Now that we are able to compile some ordinary C code, we start to add *Modular C* directives. The first is the **module** directive itself:

**Lemma 3** *Let  $M$  be a conforming module without composed identifiers and as only Modular C directive a **module** directive that names the module with a non-composed valid identifier  $MODNAME$ .*

1. *The following are equivalent:*
  - $M$  is stable.
  - $f(M)$  is stable.
  - The replacement procedure compiles  $M$  to a valid archive file.
2. *If  $M$  is stable, " $MODNAME.h$ " is a valid conventional C header file that correctly declares all exported definitions of  $f(M)$ .*
3. *If  $M$  is stable and has an **entry**, the archive file can be linked to a valid executable that is functionally equivalent to the original program defined by  $M$ .*

### 5.3 Stitching modules into one project

Modules are not conceived as isolated, monolithic software, but as components that integrate into a whole system of other modules. To guarantee properties of a particular module  $M$  we will have to argue about a long list of modules that are imported by  $M$ . This list will usually contain all the modules that compose the C library and eventually other more project specific modules.

**Definition 16** *An ordered set of valid modules  $\mathcal{M} = (M_0, \dots, M_{n-1})$  forms a consistent project if the following hold:*

1. *All module names are mutually distinct.*
2. *All module imports stay in the set  $\mathcal{M}$ .*
3. *The order in  $\mathcal{M}$  is consistent with all import graphs.*

Note that (2) implies that for all composed module names  $N_0 :: \dots :: N_{\ell-2} :: N_{\ell-1}$  there must also be a module with name  $N_0 :: \dots :: N_{\ell-2}$  in the set. Also, (3) implies that all import graphs for all modules in  $\mathcal{M}$  are acyclic.

Now we are able to formulate the principal property of *Modular C*, namely that compilation of modules such as described by the replacement procedure is equivalent to the compilation of well specified regular TU.

**Theorem 1** *Let  $\mathcal{M} = (M_0, \dots, M_{n-1})$  be a consistent project with completed sources  $\mathcal{M}^+ = (M_0^+, \dots, M_{n-1}^+)$ . The following are equivalent.*

1. *For all  $i < n$ ,  $M_i$  is a valid module such that all features to which  $M_i^+$  refers are either defined by  $M_i^+$  or exported by  $M_0^+, \dots, M_{i-1}^+$ .*
2. *For all  $i < n$ ,  $f(M_i^+)$  is a conforming TU such that all file scope identifiers are either defined by  $f(M_i^+)$  itself or declared by some  $\mathcal{D}(f(M_j^+)) \cdot \mathcal{D}(f(M_j^+))$  for some  $j < i$ .*
3. *For all  $i < n$ , the following concatenation of sources is stable:*

$$\mathcal{D}(f(M_0^+)) \cdot \mathcal{D}(f(M_0^+)) \cdots \mathcal{D}(f(M_{n-1}^+)) \cdot \mathcal{D}(f(M_{n-1}^+)) \cdot f(M_i^+)$$

4. For all  $i < n$ , the replacement procedure compiles  $M_i$  to a valid archive file.

As a first step for a proof, consider the case that none of the module has snippets.

**Lemma 4** Let  $\mathcal{M} = (M_0, \dots, M_{n-1})$  be a consistent project without snippets, and  $\mathcal{H}_0, \dots, \mathcal{H}_{n-1}$  be the headers files produced for them by the replacement procedure in Step 7e. The following are equivalent.

1. For all  $i < n$ ,  $M_i$  is a valid module such that all features that it refers to are either defined by  $M_i$  or exported by  $M_0, \dots, M_{i-1}$ .
2. For all  $i < n$ ,  $f(M_i)$  is a conforming TU such that all file scope identifiers are either defined by  $f(M_i)$  itself or declared in  $\mathcal{H}_0 \cdots \mathcal{H}_{i-1}$ .
3. For all  $i < n$ , the concatenation of sources  $\mathcal{H}_0 \cdots \mathcal{H}_{i-1} \cdot f(M_i)$  is stable.
4. For all  $i < n$ , the replacement procedure compiles  $M_i$  to a valid archive file.

**Proof Sketch:** A proof can be done by induction on  $n$ . For  $n = 1$  the statement follows directly from Lemma 3.

Suppose that the statement holds for  $n_0 - 1$ . For the induction step, observe that the statement holds for  $i < n_0 - 1$  because of the induction hypothesis. So it remains to prove the statement holds for  $i = n_0 - 1$ . But then (3) suffices to show that  $M_i$  is valid and thus the equivalence holds.  $\square$

**Proof of Theorem 1:** With the previous lemma it suffices to show that the replacement procedure is also compatible in the presence of snippets. This follows from the following

- All abbreviation replacements are effected before splitting regular part and snippet.
- Identifiers from **slot** directives are effectively protected by renaming them to a name that is local to the exporting module. On the importer's side, these exporter-names are then "filled" with the correct names when importing snippet  $S_i$  in (7a).
- The `_Importer` identifier stands for the name of the importer and is replaced consistently when snippets are appended.  $\square$

Other properties hold for the less central features of *Modular C*. We mention the following without proof:

**Theorem 2** *If during initialization none of the **startup** functions exits preliminary through **exit**, **thrd\_create**, **thrd\_exit**, **longjmp** or similar nor catches a trap and if all of them finish eventually, the overall initialization procedure is finite, race free and asynchronous signal safe.*

## 6 A structured view of the C library

The C library as it stands has the disadvantage that it drags a lot of historical baggage. That often makes its interfaces difficult to apprehend. *Modular C* provides the opportunity for a structured view to C library features, by still remaining backwards



the minimum and maximum of a finite set of values (`min` and `max`) or to functions operating on arrays (`minv` and `maxv`).

This systematic approach allows us to group common features for different types together and provide type generic macros, implemented with C11's `_Generic` keyword, for all of them. E.g, the module `C::math` contains type generic macros that work for all arithmetic types such as `abs` or for all real types such as `min` and `max`. In our approach the implementation most of these type generic macros is almost trivial:

```

1 #define abs(X) \
2 _Generic((X)+0, \
3 C::real::float: C::real::float::abs, \
4 C::real::double: C::real::double::abs, \
5 /* some more ... */ \
6 C::complex::ldouble: C::complex::ldouble::abs, \
7 C::unsigned: C::unsigned::abs, \
8 /* some more ... */ \
9 C::llong: C::llong::abs)(X)

```

Here the implementation makes the choice to select the expression only on the *promoted* type (the `+0` does that). By that no **default** branch of the generic expression is necessary and the compiler indicates an error if this macro is used with another type, as e.g, a pointer type.

Let us now list some groups of interfaces that should receive a special treatment. This is not intended to prescribe a particular way how this must be done, but to demonstrate the potential of our approach. The exact realization of this project needs a lot of discussion and ideas from the community. In its current state, our proposal has more than 160 modules for the C library.

## 6.1 Basic types

As indicated we foresee one module for every basic type, and for convenience we add one for each of the four semantic **typedef**, namely `size_t`, `ptrdiff_t` and `[u]intmax_t`. Since with modules we don't have the problem of uniqueness of identifiers we propose to drop the suffix `_t` for the names of these types for this structured interface.

All sensible functionality of these types is interfaced and regrouped into type generic macros in `C::math` where possible. This concerns also all the mathematical functions from `math.h` or `tgmath.h`. `C::math` provides type generic interfaces for all of these, with **default** branches resolving to the variant in `C::real::double`.

## 6.2 String processing

A module `C::str` provides type generic interfaces for the string functions that in the current C library have prefix `str` (regular strings) or `wcs` (wide character strings). Some of the original functions have the additional problem that they drop **const**-qualifiers where they shouldn't.

```
double strtod(char const* s, char** end);
```

This function, e.g, scans a **const**-qualified string `s` for a **double** number. If `end` is provided, after the scan `*end` will point to the ending position inside the same string. By that the **const**-qualification is lost. With type generic macros we can easily avoid that problem by using two different functions (respectively 4 including **wcs** variants)

```
double strtodm(char* s, char** end);
double strtodc(char const* s, char const** end);
```

and glue them together with a **\_Generic** expression.

### 6.3 Feature test

The current approach for feature test of the C library is tedious and error prone. *E.g.* in the transition phase from C99 to C11, many compilers accepted options to switch to C11, whereas the corresponding C library didn't implement all the features, yet. In such situations it is not clear, if the compiler or the C library should provide a `__STDC_NO_THREADS__` macro, for example. So simple code such as the following didn't work.

```
#ifndef __STDC_NO_THREADS__
# include <threads.h>
#endif
```

Both types of errors occurred: an non existing header file causes an error if the compiler implementers haven't yet come to provide the macro, or a feature in an alternative C library would not be detected because the macro was set wrongly. Sorting out different versions and features of the implemented C standard is tedious, and often the only partly viable solution is a long list of special cases for different compilers, libraries and releases.

For *Modular C* we request that all the standard modules must exist. This can either be a module that provides the feature or announces through the feature macro that it is not implemented. We already have seen a use of that in Listing 3. It imports `C::thrd`, which is, as all imports, unconditional. The code itself then can be tuned with by asking for the preprocessor macro `C::thrd::NO_THREAD`.

So the least that a provider of a C library has to do is to implement an almost empty module. There, for every optional feature it has just to provide the correct feature test macro.

### 6.4 Snippets and templates

Most of the modules that implement the features of the C library should not contain snippets, simply because we don't want to have the identifier name space of the user to be polluted by an ever growing amount of rules. Nevertheless we need some modules with snippets.

First of all, legacy code that already uses features of the C standard library should be able to continue to do so. For that purpose we propose a whole hierarchy starting with `C::std::`. These are designed to inject all features of a corresponding C library header directly to the importer. *E.g.* there is a module `C::std::io` module that interfaces

all features of `<stdio.h>`. The modules of this hierarchy should only be used during transition from legacy code to *Modular C*.

But, the C standard library should also contain some modules that provide parameterized functions or types. As a convention we have chosen the prefix `C::snippet` for code that just provides an interface that is derived from the module name. If in addition there are **slot** directives that must be specialized by the importer with **fill** directives, we use the prefix `C::tmpl`.

Currently, there are `C::snippet::init`, `C::snippet::alloc` and `C::snippet::minmax` as already mentioned. Also, there are `C::tmpl` modules to wrap **qsort** and **bsearch** and to implement simple list data structures.

## 7 Coexistence of C and Modular C

### 7.1 A reference implementation

The relative simplicity of our approach has permitted to implement a first prototype of a compiler front end and C library interface relatively fast; in total we invested some month of qualified work force into it. The implementation was undertaken in a Linux environment and heavily relies on POSIX and Gnu tools: `sh` for the front end itself, `sed` and the C preprocessor for text processing, `nm` and `objcopy` for the manipulation of binary object files, `ar` for archive management.<sup>8</sup>

We only had to use one less common tool, `makeheaders` [3]. It has been crucial to implement Step 7e, declaration extraction, of the replacement procedure. `makeheaders` is relatively small but very efficient open source C program that implements a partial C parser and extracts just the declarative parts from a C program. It also sorts the declarations in dependency order and adds the **typedef** for tag names. We only had to adapt it a little to comply to modern C: it dates from 1993 and didn't yet integrate additions of C99 and C11 in the parser. It has been of great help, and is by itself a proof for the longevity of C programs.

By integrating these tools, we were able to create a front end that should be mostly compiler and C library independent, if both comply to C11. We tested it with different versions of two different compilers, `gcc`<sup>9</sup> and `clang`,<sup>10</sup> and two different C libraries, `glibc`<sup>11</sup> and `musl`.<sup>12</sup>

### 7.2 Interfacing Modular C libraries for C and C++

The choice of Modular C as development tool should not be a one way street, that doesn't allow to go back to traditional C and that would limit the scope of applicability

<sup>8</sup> Access to the sources is available at [cmod.gforge.inria.fr](http://cmod.gforge.inria.fr)

<sup>9</sup> <http://gcc.gnu.org>

<sup>10</sup> <http://clang.llvm.org>

<sup>11</sup> <http://www.gnu.org/software/libc/>

<sup>12</sup> <http://musl-libc.org>

■ **Listing 8** An extract of the implementation of a C library interface.

```
1 #pragma CMOD module dbl      = C::real::double
2 #pragma CMOD import minmax = C::snippet::minmax
3
4 #pragma CMOD mimic <math.h>
5 #pragma CMOD mimic <float.h>
6 #pragma CMOD link -lm
7 ...
8 #pragma CMOD define  NAN
9 #pragma CMOD typedef eval    = double_t
10 #pragma CMOD defexp  PI      = 4.0*atan(1.0)
11 #pragma CMOD alias   acos
12 ...
13 #pragma CMOD declaration
14 typedef double  dbl;
15 double (acos)(double);
```

of a new software. So any implementation of Modular C must ensure that other programming languages, in particular C and C++, can easily access the functionalities of a Modular C software project.

Our reference implementation also proves that such interfacing is straight forward. It builds on existing C platforms and mainly text replacement, and header files (.h files) are already present in the archive file that is compiled for each module. By the choice of our mangling procedure (mangled identifiers start with `_C`), identifiers that are produced by our tools will never conflict with any legal C or C++ names.

We provide some scripts that extract and massage such headers from modules such that they can be used by the outside. In particular, mangled identifiers are “unmangled” and replaced by readable versions as `snail_case_identifiers` `camelCaseIdentifiers` or `PascalCaseIdentifiers`.

Our source repository also contains a relatively large example of such a newly created library called *Exclusive-Inclusive Linear Locks*, `EILck`. It has been successfully interfaced to C and C++ and can be linked to programs that are written in these languages without the necessity to pass through a Modular C compilation or even without having the Modular C tool chain installed.

### 7.3 Interfacing existing libraries for Modular C

*Modular C* as we presented it so far only describes the language extension itself and not how existing software packages should be interfaced such that they fit into the framework. In particular, to provide an operational environment we have to interface the C library of the platform with module interfaces as described above. This has been done by specifying and implementing an additional set of directives, as can be seen in Listing 8.



Our idea is to capture the dependency from a traditional header file within in a stub module. We use a **mimic** directive to refer to the traditional header file, add information for the linker with **link**, and then extract all information from the header by either text matching or by compiling short test programs. We provide an additional set of directives:

- **define** extracts a macro definition.
- **typedef** extracts a type.
- **alias** adds a mangled alias for an existing symbol to the symbol table.
- **defexp** evaluates its expression on the right at compile time and defines a macro with that computed value.
- **defstruct** extracts predefined **struct** types and ensures size, alignment and exact offset positioning of all fields.

The directive **defexp** (for “define expression”) proved to be quite practical. To evaluate the expression that is written on the RHS of the = we create a short C program that is run once to print out the result of the evaluation. By this, the platform information is extracted only once, during the compilation of the interface modules, and the compiled modules present similar features as precompiled header files.

Most of these tools are implemented such that they encapsulate all necessary information in the compiled module. Aliases that are specified with the **alias** directive are implemented as linker replacement. In our example the (mangled) symbol `C::real::double::acos` would act as a link time alias for the C library function **acos**.

So overall, interfacing existing C libraries has minimal compile time and link time overhead but *no run time overhead*.

As can be seen in some of the examples, we apply the similar renaming ideas to these directives. E.g, the **typedef** directive extracts the declaration of **double\_t** from the standard header and then provides a local definition of a type `C::real::double::eval`.

All of this is still surprisingly fast: due to the efficiency of the tools that we use a compilation of the about 120 module files that today compose our C library interface takes only 33 seconds on a modern laptop.

#### 7.4 A migration path for existing C projects

Migration of existing software projects to new tools is probably never simple. Nevertheless we think that for projects that are already well interfaced and structured the transition to *Modular C* should be feasible.

There are several possibilities when making some C software accessible for *Modular C*. The first would be to just provide wrapper modules, that is modules that just extract header information from the existing .h files of the project and ensure the proper linking with the unmodified library. This can be done in a similar way as we have described above for the C library. By following this example, it should be possible for an experienced programmer to interface any reasonable C application header within an hour of work.

Once that interfacing is achieved, the source migration of a C project then can be done as follows. Let us suppose that we have a project that already applies a suitable

naming scheme to the interfaces that it provides. Say the overall project is called `proj` and it contains functions and types that use an underscore convention, e.g., `proj_list` for a list type, `proj_list_init` for an initialization function etc. First we have to create a module for the top level of the project:

```
#pragma CMOD module proj
#pragma CMOD link -lproj
```

Then we start creating a module for each type (or more general for each functional unit) that we want to export. We start with those units that are at the core of our project and don't need to import other parts of the project.

```
1 #pragma CMOD module list = proj::list
2 /* Add analogous imports for all standard headers. */
3 #pragma CMOD import      C::std::io
4
5 #pragma CMOD declaration
6
7 /* Put all types and macros from "proj_list.h", here. */
8 struct proj_list {
9     proj_list* next;
10    /* something */
11 };
12
13 #pragma CMOD definition
14
15 /* Copy most of "proj_list.c", here.
16    Omit extern decl for inline functions. */
17 proj_list* proj_list_init(proj_list* l) {
18     /* do something */
19     return l;
20 }
```

Compile the resulting modules `proj.X` and `proj-list.X`. Once the compilation is successful we should find an archive `proj-list.a`. Applying the `nm` utility on it may complain about some components in an unknown format but then it should show something similar to the lines

		Terminal
0	>	<code>nm -C proj#list.a</code>
1		<code>proj#list.o:</code>
2		<code>0000...0000 W proj_list_proj_list_init</code>
3		<code>0000...0000 T _C::proj::list::proj_list_init</code>

We have two entries in the symbol table, one for the mangled name (translated into C++'s composite naming scheme) and an alias for the conventional name, here `proj_list_proj_list_init`.

Then we can get rid of the internal name prefix by first removing all `proj_list_` prefixes and then substituting `proj_list` by `list` for the type itself.

```

1 #pragma CMOD module list = proj::list
2 /* Add analogous imports for all standard
3    headers. */
4 #pragma CMOD import      C::std::io
5
6 #pragma CMOD declaration
7
8 /* Put all type declarations and macros from "proj_list.h", here
9    ↪ . */
9 struct list {
10     list* next;
11     /* something */
12 };
13
14 #pragma CMOD definition
15
16 /* Copy most of "proj_list.c", here.
17    Omit extern decl. for inline functions. */
18 list* init(list* l) {
19     /* do something */
20     return l;
21 }

```

By that the first the nm output should have changed to

```

Terminal
o  proj#list.o:
1  0000...0000 W proj_list_init
2  0000...0000 T _C::proj::list::init

```

We now already have an object file that we can use instead of the one that was produced from `proj_list.c`.

Analogously, we can then proceed to transform all units that will import `proj::list` in a similar way. At the end we should find ourselves with a collection of `.a` files that implement the same symbols as our traditional library. It still is API compatible with the header files that we had for that, so our new version of the library written with modules can be used without problems.

Evidently, all these replacement so far only improved the ease of reading and writing our code, but not code reuse. But once this status is reached, the real refactoring of the code can begin: module imports from the `C::std::` hierarchy can be replaced, macros and X macros can be rewritten as snippets, code parts that are structurally similar can be grouped together, repetitive code can be substituted by a single definition in a snippet.

## 8 Conclusion

Our proposition *Modular C* adds modularity and reusability to standard C by introducing a simple naming scheme. It allows a free choice of non-reserved identifiers for all features that are exported by a module and stitches these together by a set of *directives*. The change to C is minimal and in fact we were able to prove the equivalence of code written for *Modular C* to a large subset of valid C code. Related features of a software project can be grouped and accessed together. This is done without introducing new syntactical constructs to the core language, and allows for a grouping of features that is more flexible than classes in traditional object-oriented languages. Parameterized code reuse is provided through *snippets*, small parts of code that can be injected to an importing module and that are written in conventional C, no extra syntax is required.

Other features are added to Modular C that fall out from the global approach almost effortlessly, but can nonetheless be helpful tools for future software projects. *E.g.*, there is a simple dynamic module startup and cleanup scheme and also a structured approach to the C library. The latter enables us to avoid some shortcomings of the existing C library interface, namely problems with **const** qualification and lack of type safety for generic functions such as **qsort**.

Last but not least we have shown that these ideas can be implemented effectively on top of existing C platforms and that existing software projects can be migrated to *Modular C* with reasonable effort.

## References

- [1] Tiobe Software BV, 2015. monthly since 2000. URL: <http://www.tiobe.com/index.php/content/paperinfo/tpci/index.html>.
- [2] Doug Gregor. Modules. Apple Inc., Dec 2012. URL: <http://llvm.org/devmtg/2012-11/Gregor-Modules.pdf>.
- [3] D. Richard Hipp. Makeheaders, 1993. URL: <http://www.hwaci.com/sw/mkhdr/>.
- [4] JTC1/SC22/WG14, editor. *Programming languages - C*. Number ISO/IEC 9899. ISO, cor. 1:2012 edition, 2011. URL: <http://www.open-std.org/jtc1/sc22/wg14/www/docs/n1570.pdf>.
- [5] Rob Pike. Go at google. In *Conference on Systems, Programming, and Applications: Software for Humanity, SPLASH '12*, pages 5–6, 2012. see also <http://talks.golang.org/2012/splash.article>. URL: <http://doi.acm.org/10.1145/2384716.2384720>, doi:10.1145/2384716.2384720.
- [6] Keith Schwarz. Advanced preprocessor techniques, 2009. URL: [http://www.keithschwarz.com/cs106l/spring2009/handouts/o8o\\_Preprocessor\\_2.pdf](http://www.keithschwarz.com/cs106l/spring2009/handouts/o8o_Preprocessor_2.pdf).
- [7] Saurabh Srivastava, Michael Hicks, Jeffrey S Foster, and Patrick Jenkins. Modular information hiding and type-safe linking for C. *IEEE Transactions on Software Engineering*, 34(3):357–376, 2008.
- [8] Linus Torvalds et al. Linux kernel coding style, 1996. evolved mildly over the years. URL: <https://www.kernel.org/doc/Documentation/CodingStyle>.



**RESEARCH CENTRE  
NANCY – GRAND EST**

615 rue du Jardin Botanique  
CS20101

54603 Villers-lès-Nancy Cedex

Publisher

Inria

Domaine de Voluceau - Rocquencourt

BP 105 - 78153 Le Chesnay Cedex

[inria.fr](http://inria.fr)

ISSN 0249-6399