



**HAL**  
open science

## Modeling software application front-ends: introducing the open source IFML graphical editor...

Hamza Ed-Douibi, Hugo Bruneliere

### ► To cite this version:

Hamza Ed-Douibi, Hugo Bruneliere. Modeling software application front-ends: introducing the open source IFML graphical editor.... EclipseCon North America 2015 - Modeling Symposium, Mar 2015, San Francisco, United States. hal-01146785

**HAL Id: hal-01146785**

**<https://inria.hal.science/hal-01146785>**

Submitted on 11 Apr 2023

**HAL** is a multi-disciplinary open access archive for the deposit and dissemination of scientific research documents, whether they are published or not. The documents may come from teaching and research institutions in France or abroad, or from public or private research centers.

L'archive ouverte pluridisciplinaire **HAL**, est destinée au dépôt et à la diffusion de documents scientifiques de niveau recherche, publiés ou non, émanant des établissements d'enseignement et de recherche français ou étrangers, des laboratoires publics ou privés.



The open source **IFML** editor for Eclipse.

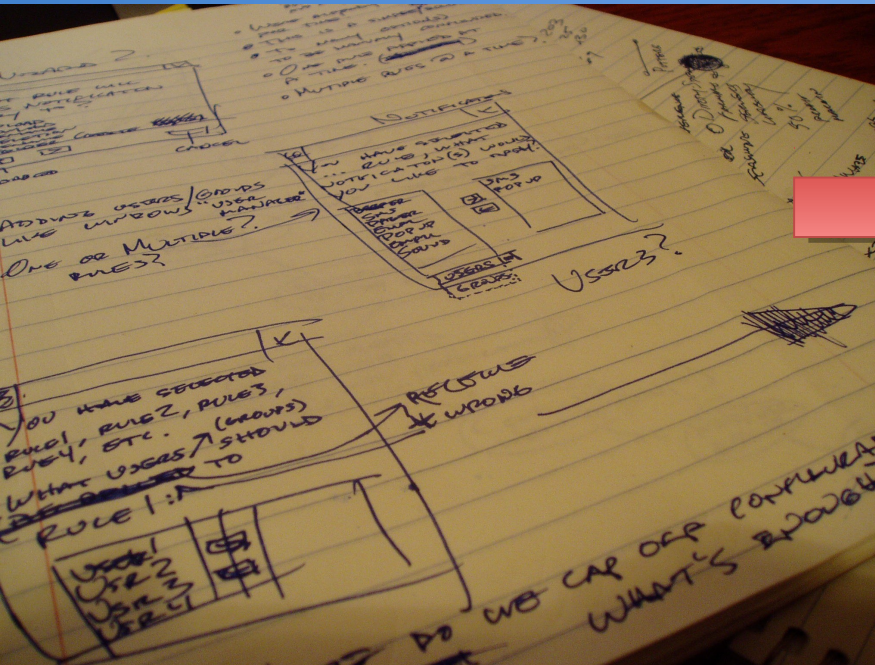
## Modeling application front-ends...

Hamza Ed-Douibi, [Hugo Bruneliere](#)

 eclipsecon 2015

Modeling Symposium  
10<sup>th</sup> of March 2015

# Modeling application front-ends...



## UI Design Problem...

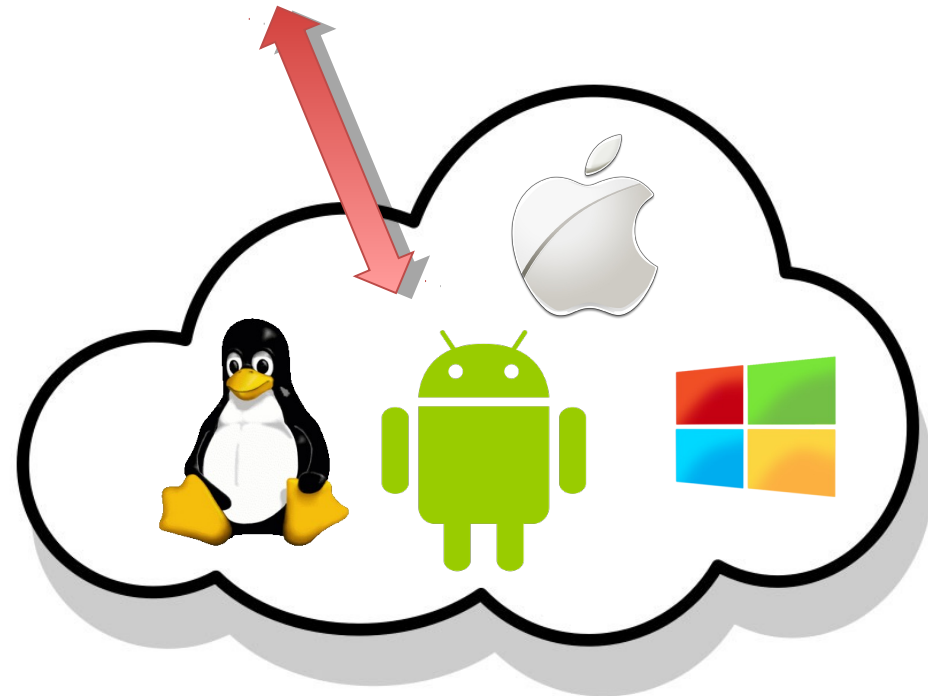
Complexity



Manual development

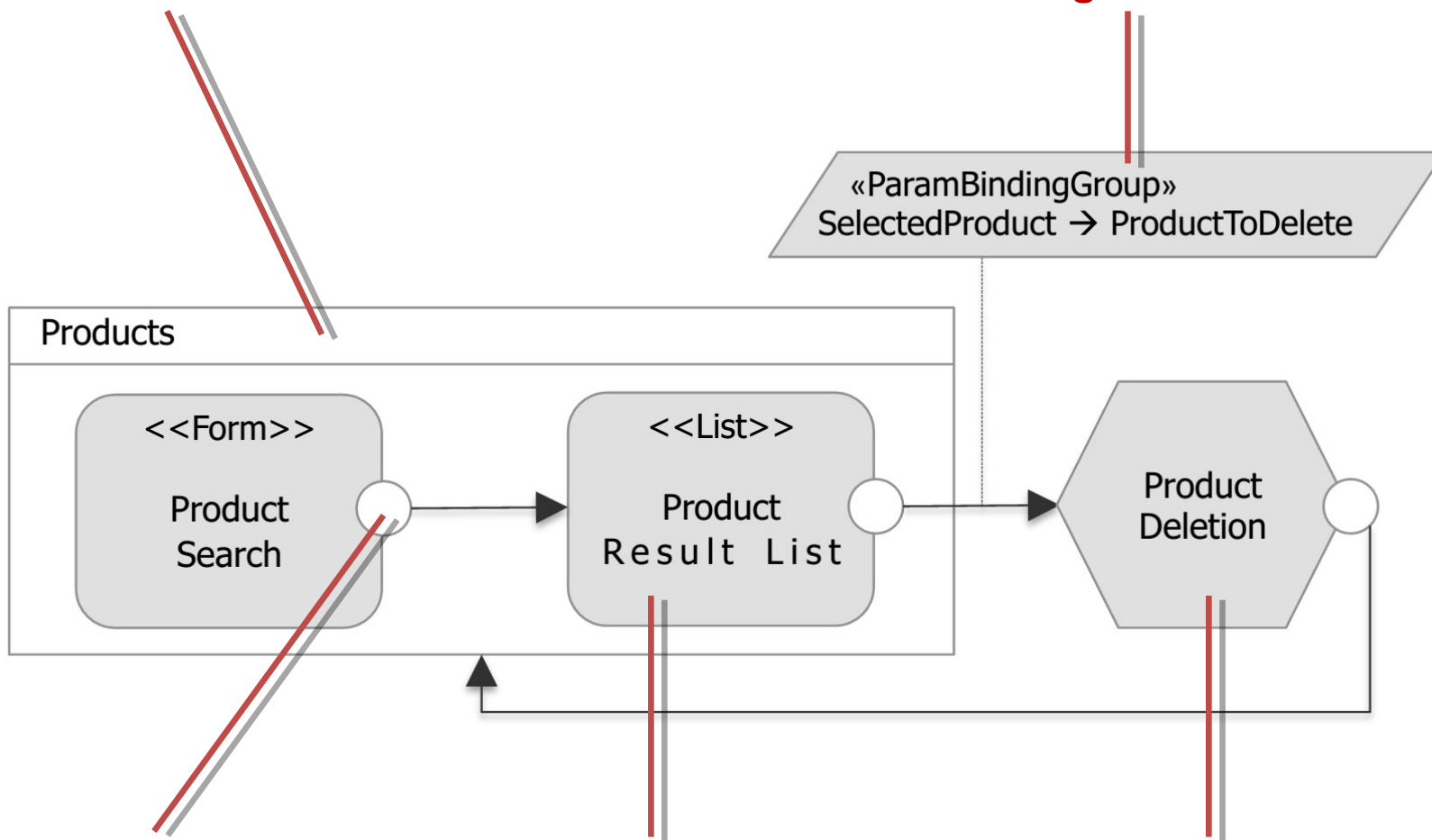


Limited reusability/portability



**Generic View Container**

**Binding/Parameter**



**Generic Event**

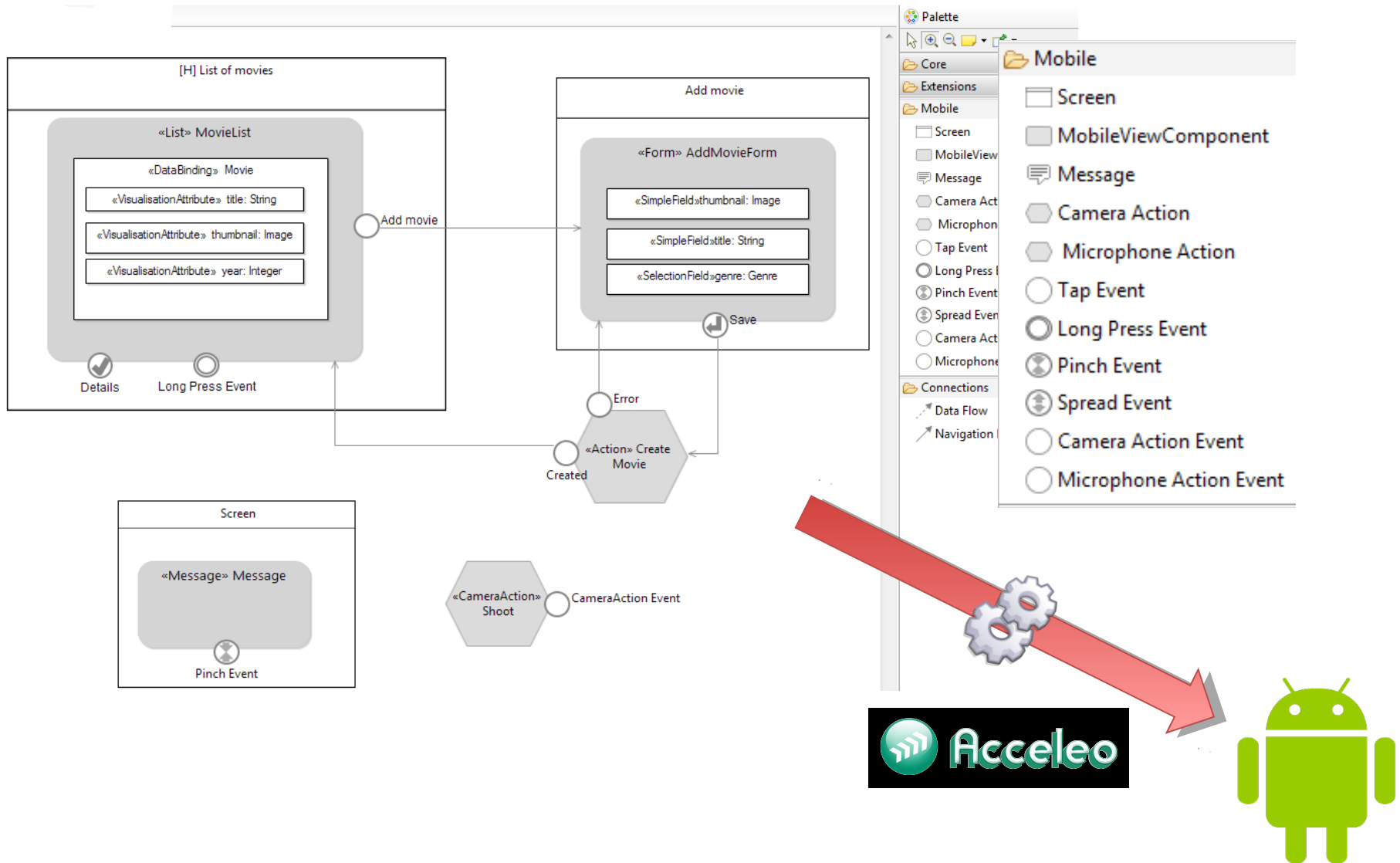
**View Component**

**General-purpose Action**

# Main features of IFML Editor

- 1** Full coverage of OMG IFML standard
- 2** Extensibility to different domains
- 3** Code generation-friendly (e.g. Acceleo)
- 4** Based on EMF and Sirius (Eclipse inside!)

# IFML Editor Demonstration...



# Thank you for your attention!

Fork me on GitHub

- Plugins, samples, documentation:

<http://ifml.github.io/>

- AtlanMod contacts
  - Hamza Ed-Douibi ([hamza.ed-doubi@inria.fr](mailto:hamza.ed-doubi@inria.fr))
  - Hugo Bruneliere ([hugo.bruneliere@inria.fr](mailto:hugo.bruneliere@inria.fr))



# Thank you for your attention!

Fork me on GitHub

- Plugins, samples, documentation:

<http://ifml.github.io/>

- AtlanMod contacts
  - Hamza Ed-Douibi ([hamza.ed-doubi@inria.fr](mailto:hamza.ed-doubi@inria.fr))
  - Hugo Bruneliere ([hugo.bruneliere@inria.fr](mailto:hugo.bruneliere@inria.fr))

