



---

# MULTISCALE IMAGE ANALYSIS WITH STOCHASTIC TEXTURE DIFFERENCES

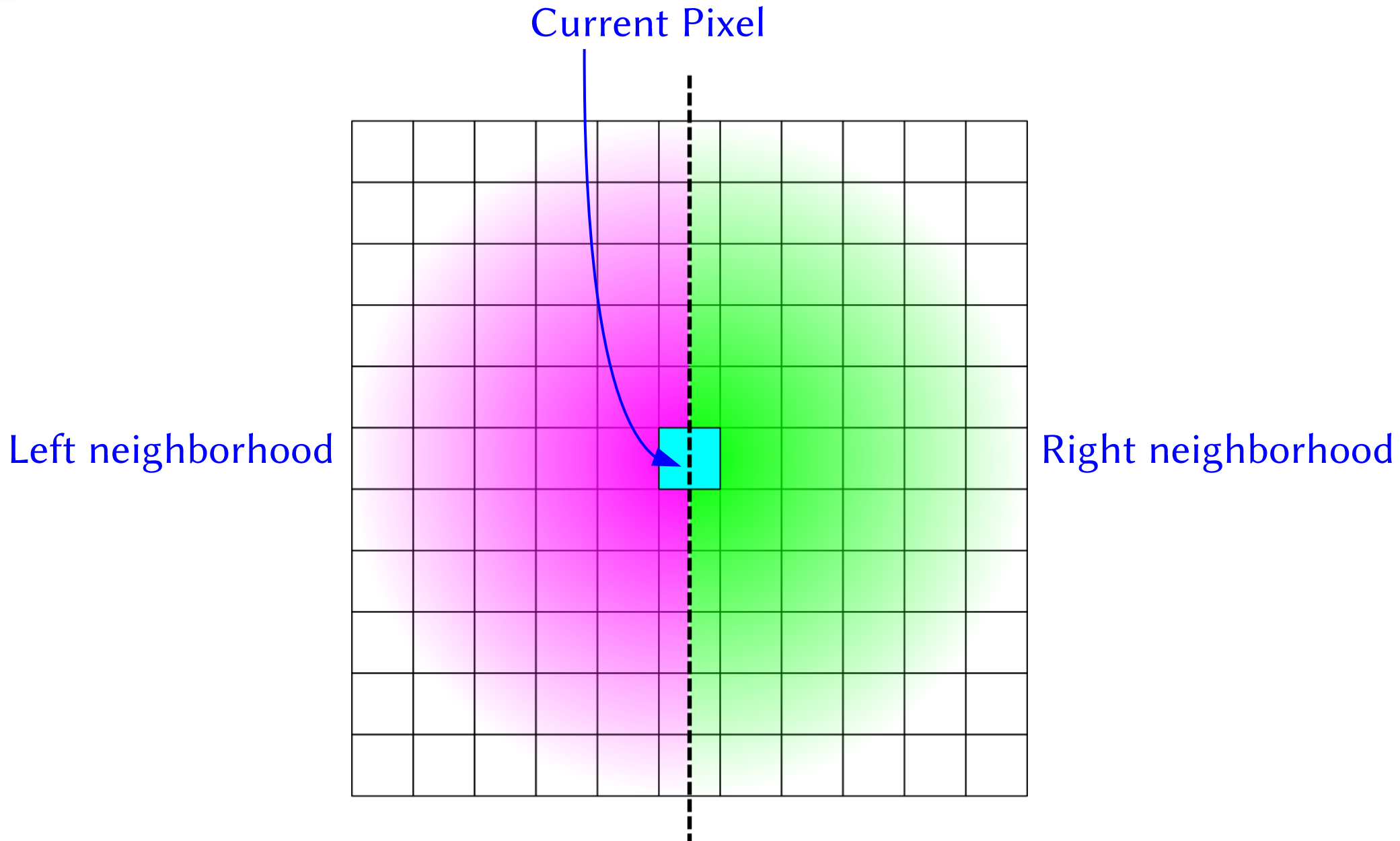
Nicolas Brodu, Hussein Yahia

INRIA Bordeaux Sud-Ouest

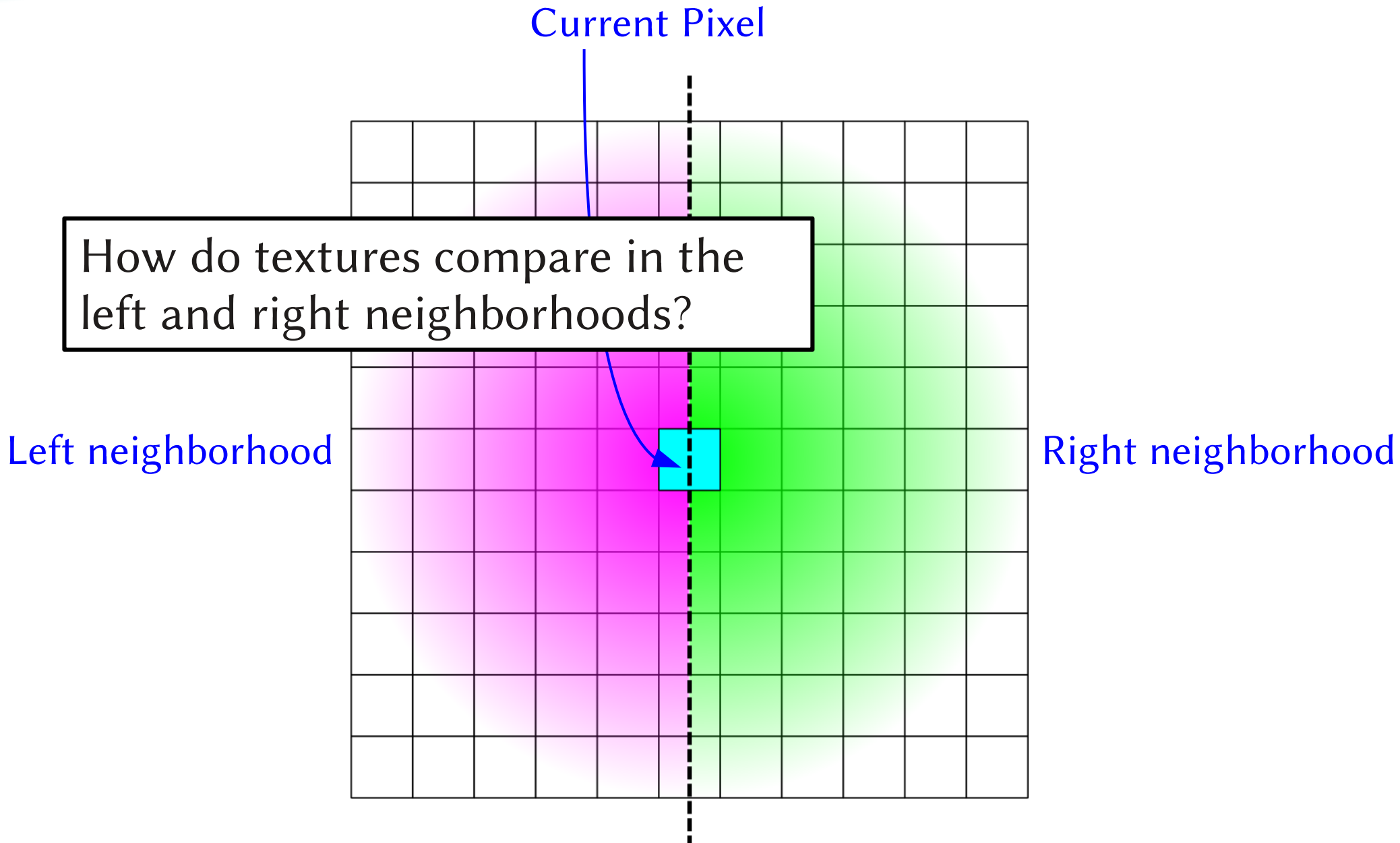
16 / 01 / 2014

---

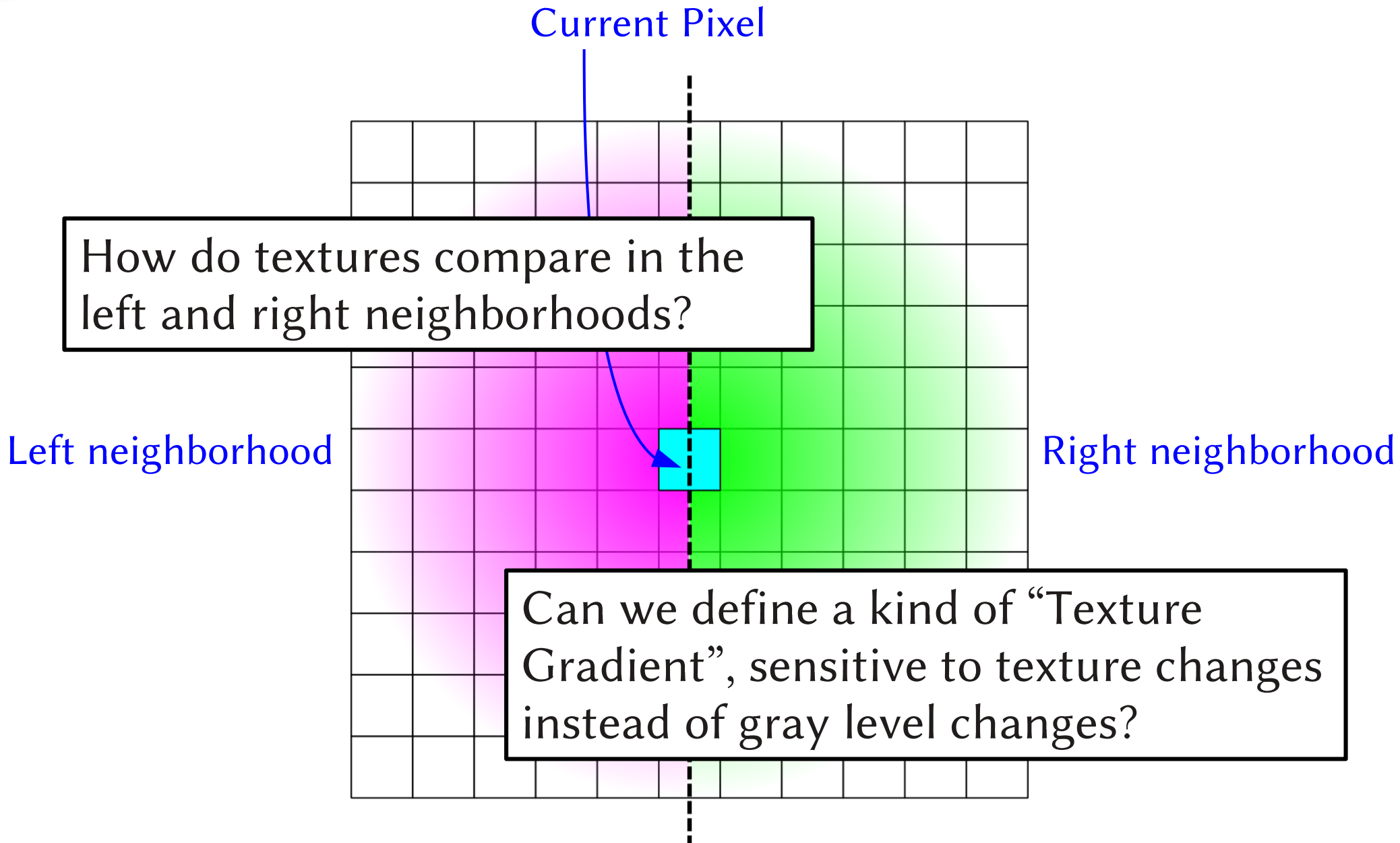
# THE IDEA



# THE IDEA



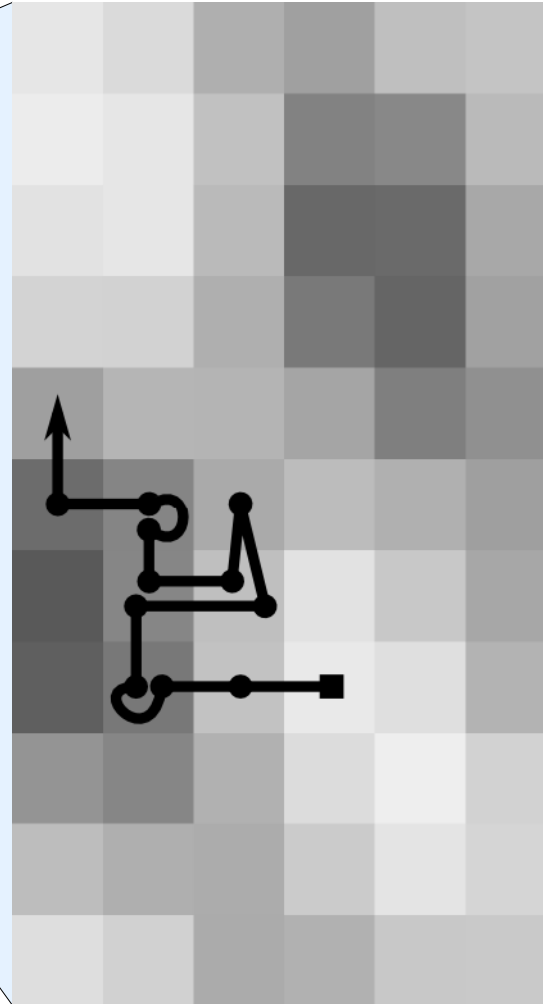
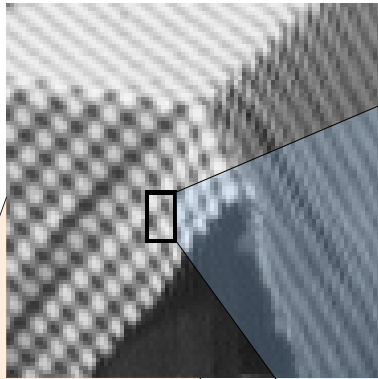
# THE IDEA



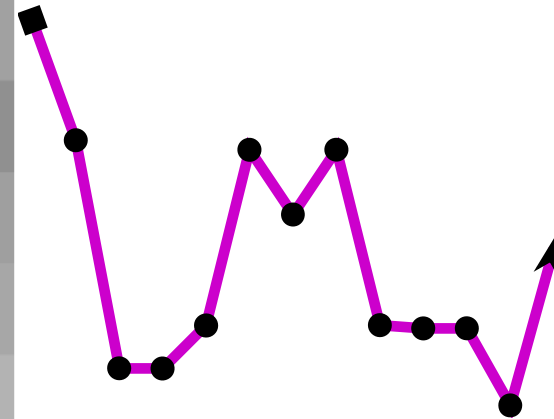


# TEXTURE REPRESENTATION

Pixel values  $v \in V$  (e.g.  $[0..255]$ )



Series of pixel values  $s \in V^m$



$m=13$

$s = (233, 194, 120, 120, 134, 191, 170, 191, 134, 133, 133, 108, 159)$

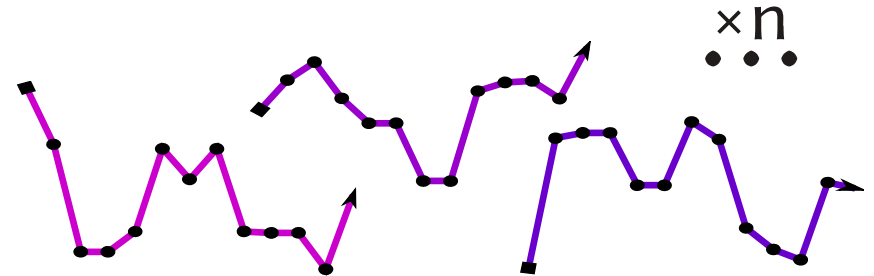
# TEXTURE REPRESENTATION

Texture = Probability distribution over  $V^m$

- Distribution of **sequences**
- Collectively, these sequences characterize how pixel values evolve in the texture

Observed series = samples

- Collect  $n$  observed series



Estimator for the probability distribution

- Use a Reproducing Kernel Hilbert Space  $\mathcal{H}$
- Use a characteristic kernel  $k$  such that  $k(s, \cdot) \in \mathcal{H}$
- Empirical estimator:  $P \hat{=} \frac{1}{n} \sum_{i=1}^n k(s_i, \cdot)$

# COMPARING TEXTURES

Texture on the left = P, on the right = Q

- Use the RKHS norm:  $d(P,Q) = \|P-Q\|_{\mathcal{H}} = \sqrt{\langle P-Q, P-Q \rangle_{\mathcal{H}}}$
- $d^2(P,Q) \hat{=} \left( \sum_{i,j} k(s_i, s_j) + \sum_{i,j} k(t_i, t_j) - 2 \sum_{i,j} k(s_i, t_j) \right) / n^2$   
with  $\{s\}$  and  $\{t\}$  samples from P and Q

This is the **MMD test** (Gretton *et al.*, 2012)

- Beats  $\chi^2$  or Kolmogorov-Smirnov esp. for small  $n$
- Error in  $O(n^{-1/2})$  does **not** depend on  $\dim(V^m)$ , just  $n$ .

Valid for **any** kernel  $\Rightarrow$  not limited to gray scale

- Vector data (RGB, hyperspectral), strings, graphs...



# SCALAR PIXELS (E.G. GRAY SCALE)

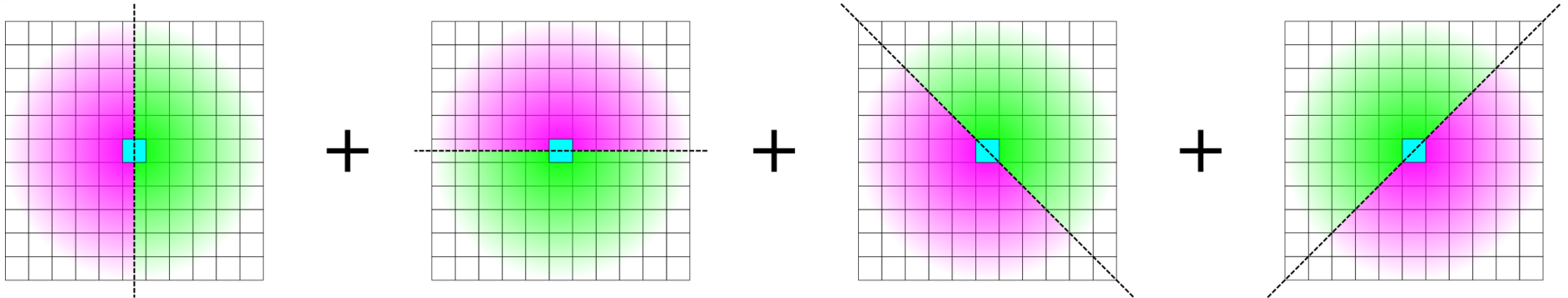
## Scaling the data: $s_i' = s_i / \kappa$

- $\kappa$  is the characteristic data scale, e.g. gray level difference, at which the texture is best described
- small  $\kappa$  : sensitive to small variations, but large gradients give similar  $k(s,t)$  values
- large  $\kappa$  : distinguish large gray level gradients, but small variations (e.g. noise) are ignored

## The inverse quadratic kernel

- $k(s,t) = 1/(1 + \frac{1}{m} \|s' - t'\|^2)$ , using the norm in  $V^m$
- Characteristic and faster than the Gaussian kernel
- Normalize by  $m$ : comparable kernel values  $\forall \lambda$

# COMBINING DIRECTIONS



## Diagonals

- Use the same scale  $\lambda$  and adapt the Markov chain

## Combining directions

- Product space  $\mathcal{H}_{L/R} \times \mathcal{H}_{U/D} \times \mathcal{H}_{DL/UR} \times \mathcal{H}_{DR/UL}$

$$\Rightarrow \text{Norm is } d(\mathbf{x})^2 = d_{L/R}(\mathbf{x})^2 + d_{U/D}(\mathbf{x})^2 + d_{DL/UR}(\mathbf{x})^2 + d_{DR/UL}(\mathbf{x})^2$$

for each pixel  $\mathbf{x}$ , LRUD = Left Right Up Down, + diagonals

## Easy extensions if need be

- Any angle  $\theta$ , voxels / higher dimensions, anisotropy...

# RESULT: AN EDGE DETECTOR...



Original gray scale image



$d(x)$  for each pixel  $x$   
with  $\lambda=1.5$ ,  $\kappa=0.36$  (for  $v=0..1$ )  
white/black is min/max  $d(x)$

# ...THAT CAN ANALYZE AT $\neq$ SCALES...

JPEG quantization artifacts

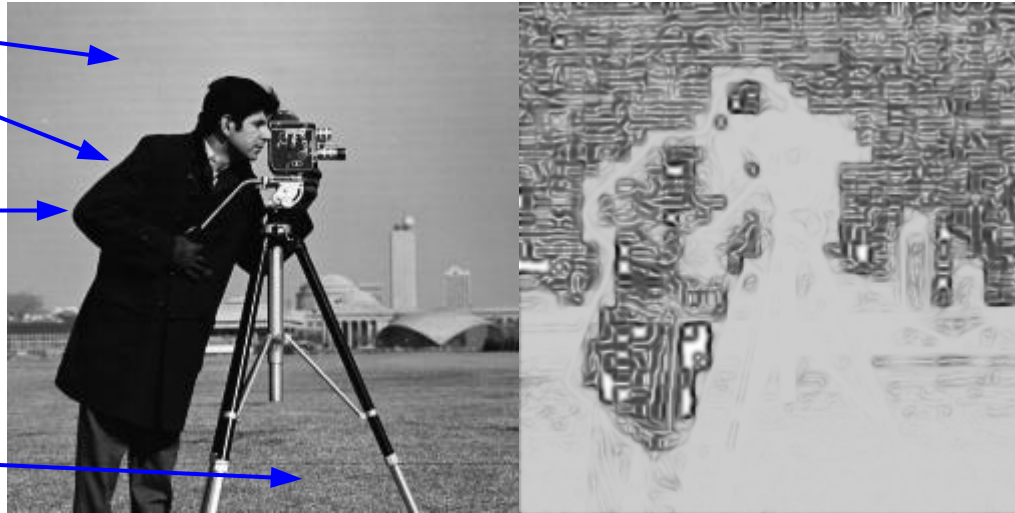
Large contrast differences: coat, tripod, handle

Fine texture with white / med-grey contrast

Edges at small  $\lambda$ :  
– sharp, but some JPEG blocks still visible  
–  $\lambda$  too small for the grass texture

Original

$\lambda=3, \kappa=1/256$



Edges at small  $\kappa$ :  
– sensitive to small gray diff.: JPEG artifacts, texture within the coat  
– ignore med/large diff.: no grass, no coat edges, no tripod poles



$\lambda=1, \kappa=1$

$\lambda=3, \kappa=1$

Edges at large  $\kappa$ :  
– Ignore JPEG artifacts  
– Highlight large contrasts

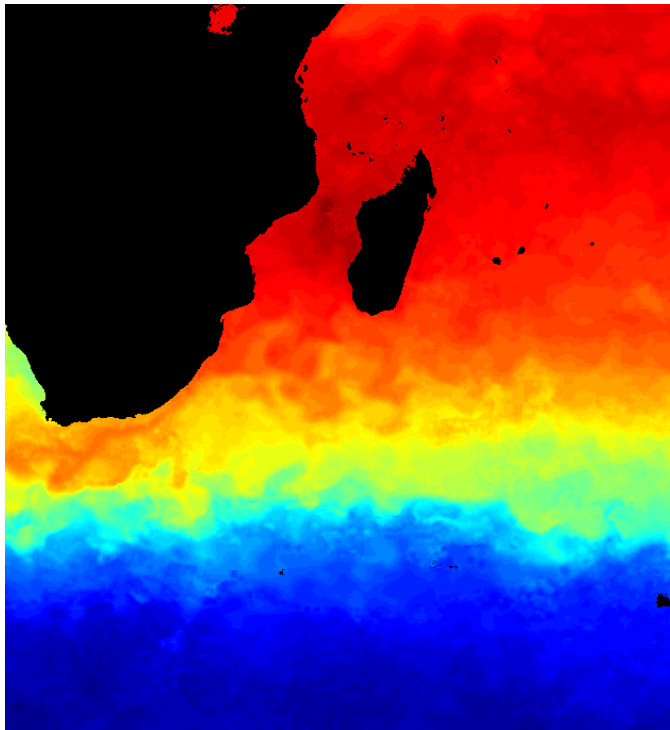
Edges at medium  $\lambda$ :  
– smoother  
– grass texture  $< \lambda$  is matched

# APPLICATION TO REMOTE SENSING

Spatial ( $\lambda$ ) and data ( $\kappa$ ) scales are known a priori

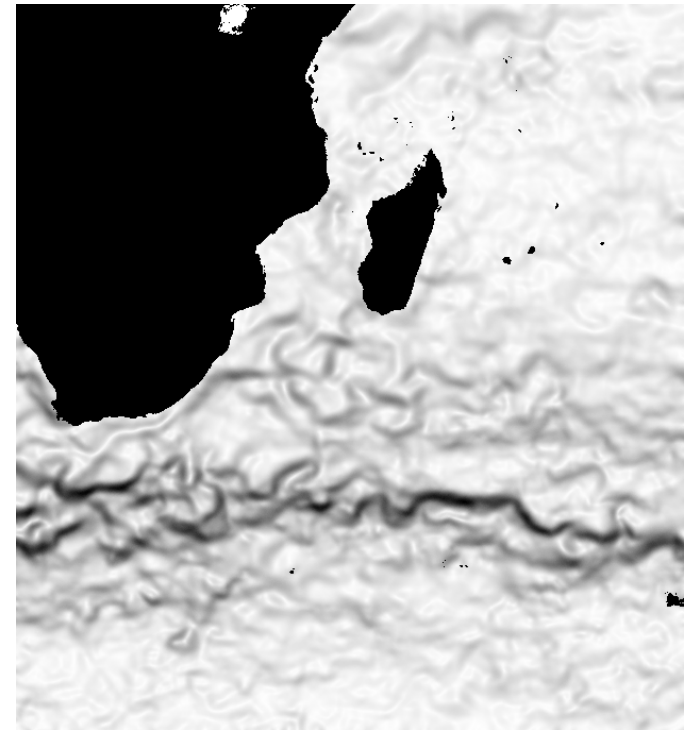
- Small  $\kappa$  is not necessarily noise: e.g. large trends = sensor drift and small variations carry information
- Over- or sub- sampled signals:  $\lambda$  should match the characteristic physical scale, not the sampling rate

Example: Sea Surface Temperature



Left:  
8-day composite MODIS data  
blue =  $-1.2^{\circ}\text{C}$  to red =  $31.5^{\circ}\text{C}$   
black = land masses (no data)

Right: analysis at:  
 $\lambda \approx 75\text{km}$  (at center)  
 $\kappa \approx 1^{\circ}\text{C}$   
 $\Rightarrow$  typical oceanic  
current scales



# DETECTING CHARACTERISTIC SCALES

## Finding $\lambda$ and $\kappa$ without a priori information

- Analyse for a given pair of scales  $\lambda$  and  $\kappa$
- Retain 20% of the most discriminative points
- Reconstruct the image from these points
- Compare with the original

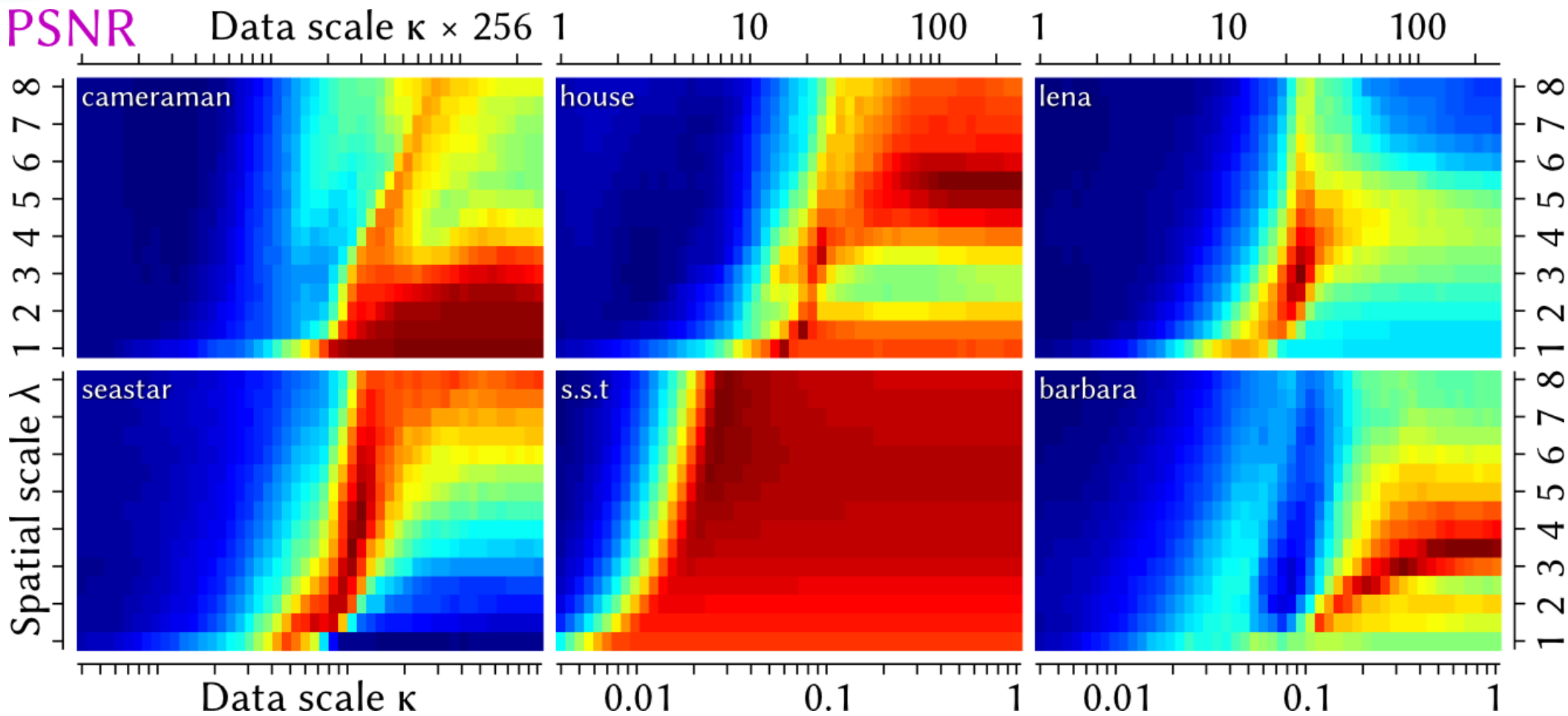
## Hypothesis

- **IF** the points carry most of the information in the image.  
**THEN** the reconstruction will be “good”.

## Reconstruction accuracy as a proxy for good $\lambda$ , $\kappa$

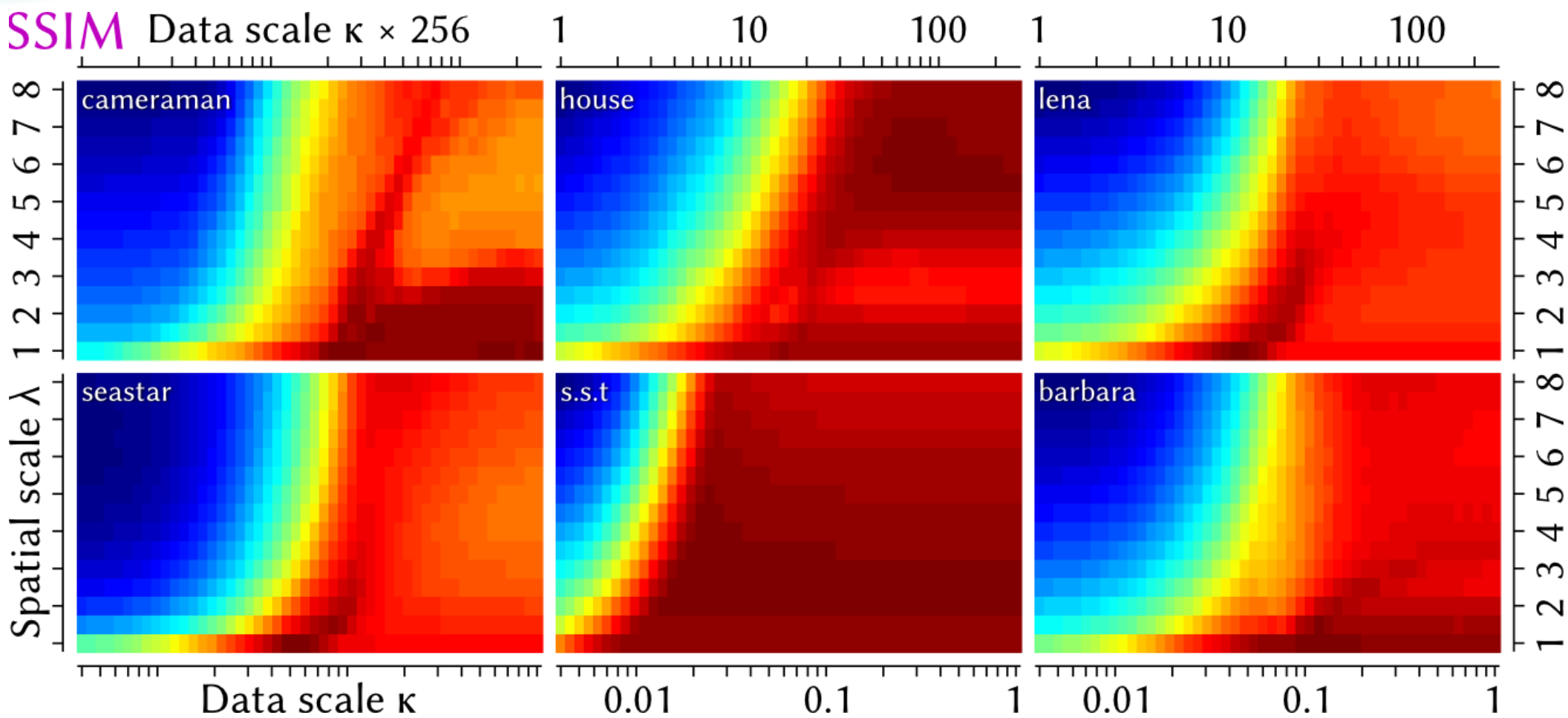
- Accuracy using the Peak Signal to Noise Ratio (PSNR)
- Accuracy using the Structural SIMilarity index (SSIM)

# MULTISCALE ANALYSIS: PSNR



- Definite zones of high accuracy  $\Rightarrow$  best  $\lambda$ ,  $\kappa$
- Local maxima (cameraman, house)  $\Rightarrow$  objects in image have  $\neq$  properties
- Zones at low  $\kappa$  (s.s.t, house) have high PSNR but match noise:  
house: the brick texture, sea surface temperature (s.s.t): noise at  $0.1^\circ\text{C}$

# MULTISCALE ANALYSIS: SSIM



- Same general transitions  $\Rightarrow$  irrelevant  $\lambda, \kappa$  below
- Zones of local maxima SSIM  $\neq$  PSNR  
 $\Rightarrow$  Pareto front for best  $\lambda, \kappa$ . Common maxima = best  $\lambda, \kappa$  ?
- Something special for Barbara at  $\lambda \approx 2.5$  and large  $\kappa$ , in both PSNR / SSIM

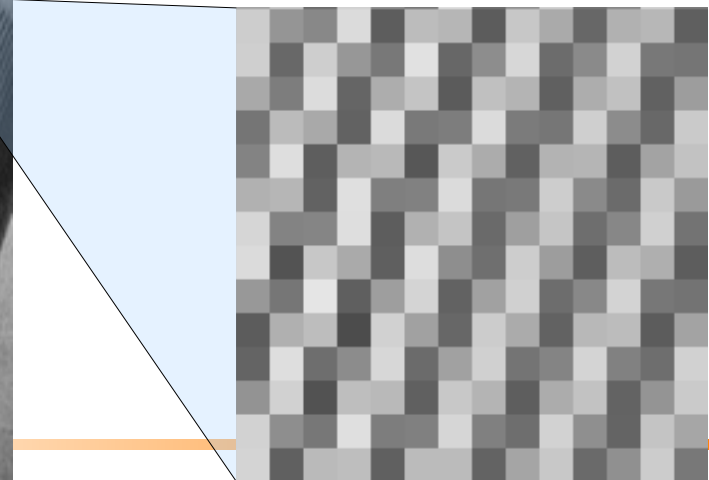


# BARBARA, $\lambda \approx 2.5$ , LARGE GRADIENT?



Quite obvious!

but a nice validation  
of the method



# RECONSTRUCTION FROM 20% POINTS



$\lambda=1.5$ ,  $\kappa=0.12$ , PSNR=17.6, SSIM=0.73



$\lambda=3.5$ ,  $\kappa=0.64$ , PSNR=17.7, SSIM=0.67

Texture edges preserved, details  $\lesssim \lambda$  smoothed out!

# COLORED TEXTURES

The method is valid for **any** kernel acting on  $V^m$

– Especially vector data: Color spaces, hyperspectral, etc.

For RGB triplets  $v = \{r,g,b\} \in V$

– Conversion to Lab space with D65 white point:  $\ell(v) \in \mathcal{L}$

– Using one of the two operators:

·  $\delta_1(v,w) = \|\ell(v) - \ell(w)\|_{\mathcal{L}}$  : Lab is perceptually uniform  $\Rightarrow$  norm in Lab is presumably a sensitivity to color difference

·  $\delta_2(v,w) = \Delta E(\ell(v) - \ell(w))$  : CIE DE 2000 updated formula for a better perceptual uniformity

– Then apply an updated kernel

$$k_{1,2}(s,t) = 1 / (1 + \frac{1}{m} \sum (\delta_{1,2}(v,w) / \kappa)^2)$$

# COLOR RESULTS



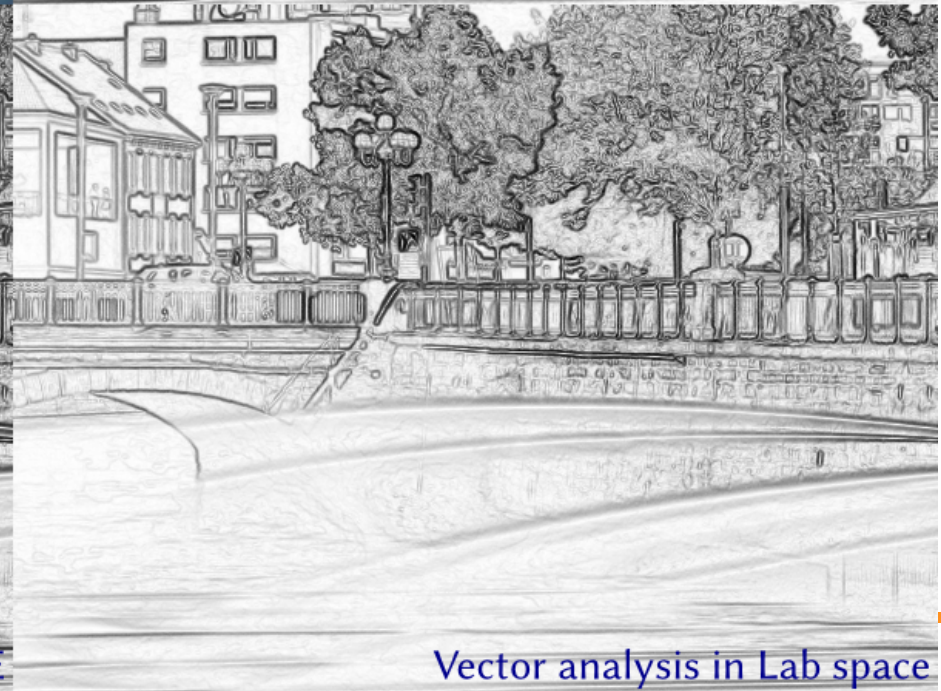
Original image



Scalar analysis on gray scale



Vector analysis using  $\Delta E$



Vector analysis in Lab space

# SUMMARY

## Multiscale Image Analysis

- Find or use the characteristic spatial ( $\lambda$ ) and data value ( $\kappa$ ) scales within the image

## With Stochastic Texture Differences

- Statistical description of the texture
- Norm of a difference (in Hilbert space)
  - $\Rightarrow$  behaves like a norm of a gradient (=difference)
  - ... but for textures!

## And for vector data

- Shown with RGB, but anything with a kernel is OK

N. Brodu, H. Yahia, “Multiscale image analysis with stochastic texture differences”, to appear online in 2015.