



HAL
open science

An English-Arabic Bi-directional Machine Translation Tool in the Agriculture Domain

Khaled Shaalan, Ashraf Hendam, Ahmed Rafea

► **To cite this version:**

Khaled Shaalan, Ashraf Hendam, Ahmed Rafea. An English-Arabic Bi-directional Machine Translation Tool in the Agriculture Domain. 6th IFIP TC 12 International Conference on Intelligent Information Processing (IIP), Oct 2010, Manchester, United Kingdom. pp.281-290, 10.1007/978-3-642-16327-2_34 . hal-01060364

HAL Id: hal-01060364

<https://inria.hal.science/hal-01060364v1>

Submitted on 4 Sep 2014

HAL is a multi-disciplinary open access archive for the deposit and dissemination of scientific research documents, whether they are published or not. The documents may come from teaching and research institutions in France or abroad, or from public or private research centers.

L'archive ouverte pluridisciplinaire **HAL**, est destinée au dépôt et à la diffusion de documents scientifiques de niveau recherche, publiés ou non, émanant des établissements d'enseignement et de recherche français ou étrangers, des laboratoires publics ou privés.



Distributed under a Creative Commons Attribution 4.0 International License

An English-Arabic Bi-Directional Machine Translation Tool in the Agriculture Domain

A Rule-based transfer approach for translating expert systems

K. Shaalan*, A. Hendam **, A. Rafea***

**The British University in Dubai, Informatics
Dubai International Academic City,
Dubai, P.O. Box 345015, UAE
khaled.shaalan@buid.ac.ae
Honorary Fellow, School of Informatics, University of Edinburgh*

***Central Lab. For Agricultural Expert Systems (CLAES), TEUES
6 El Nour St., Giza, 1123 Egypt,
a_hendam@mail.claes.sci.eg*

**** American University in Cairo, SSE,
AUC Avenue, P.O. Box 74, New Cairo
1183 Egypt
rafea@aucegypt.edu*

ABSTRACT: The present work reports our attempt in developing an English-Arabic bi-directional Machine Translation (MT) tool in the agriculture domain. It aims to achieve automated translation of expert systems. In particular, we describe the translation of knowledge base, including, prompts, responses, explanation text, and advices. In the central laboratory for agricultural expert systems, this tool is found to be essential in developing bi-directional (English-Arabic) expert systems because both English and Arabic versions are needed for development, deployment, and usage purpose. The tool follows the rule-based transfer MT approach. A major design goal of this tool is that it can be used as a stand-alone tool and can be very well integrated with a general (English-Arabic) MT system for Arabic scientific text. The paper also discusses our experience with the developed MT system and reports on results of its application on real agricultural expert systems.

KEYWORDS: machine translation, transfer-based translation, rule-based analysis, rule-based generation, Arabic natural language processing, bilingual agricultural expert systems.

1. Introduction

Arabic is the fourth most-widely spoken language in the world. It is a highly inflectional language, with a rich morphology, relatively free word order, and two types of sentences (Ryding, 2005): nominal and verbal. Arabic natural language processing has been the focus of research for a long time in order to achieve an automated understanding of Arabic (Al-Sughaiyer et al., 2004). With globalisation and expanding trade, demand for translation is set to grow. Computer technology has been applied in technical translation in order to improve speed and cost of translation (Trujillo, 1999). *Speed*: Translation by or with the aid of machines can be faster than manual translation. *Cost*: Computer aids to translation can reduce the cost per word of a translation. In addition, the use of machine translation (MT) can result in improvements in *quality*, particularly in the use of consistent terminology within a scientific text or for a specific domain.

With the recent technological advances in MT, Arabic has received attention in order to automate Arabic translations (Farghaly et al., 2009). In this paper, we follow a transfer-based MT approach. In the transfer approach (Trujillo, 1999), the translation process is decomposed into three steps: analysis, transfer, and generation. In the analysis step, the input sentence is analyzed syntactically (and in some cases semantically) to produce an abstract representation of the source sentence, usually an annotated parse tree. In the transfer step, this representation is transferred into a corresponding representation in the target language; a collection of tree-to-tree transformations is applied recursively to the analysis tree of the source language in order to construct a target-language analysis tree. In the generation step, the target-language output is produced. The (morphological and syntactic) generator is responsible for polishing and producing the surface structure of the target sentence. For each natural language processing component, i.e., analysis, transfer, and generation, we followed the rule-based approach. The advantage of the rule-based approach over the corpus-based approach is clear for (Abdel Monem et al., 2008; Shaalan, 2010): 1) less-resourced languages, for which large corpora, possibly parallel or bilingual, with representative structures and entities are neither available nor easily affordable, and 2) for morphologically rich languages, which even with the availability of corpora suffer from data sparseness.

English is a universal language that is widely used in the media, commerce, science and technology, and education. The size of the modern English content (e.g. literature and web content) is far larger than the amount of Arabic content available. Consequently, English-to-Arabic MT is particularly important. English-Arabic MT systems are mainly based on the transfer approach. For example, Ibrahim (1991) discussed the problem of the English-to-Arabic translation of embedded idioms and proverb expressions with the English sentences. Rafea et al. (1992) developed an English-to-Arabic MT system which translates sentences from the domain of political news from the Middle East. Pease et al. (1996) developed a system which

translates medical texts from English-to-Arabic. El-Desouki et al. (1996) discussed the necessity of modular programming for English-to-Arabic MT. Translation of an English subset of a knowledge base to the corresponding Arabic phrases is described in (El-Saka et al., 1999). Mokhtar et al. (2000) developed an English-to-Arabic MT system, which is applied on abstracts from the field of Artificial Intelligence. Shaalan et al. (2004) developed an MT system for translating English noun phrases into Arabic that was applied to titles of theses and journals from the computer science domain. On the contrary, little work has been done in developing Arabic-to-English MT systems. Al-barhamtoshy (1995) proposes a translation method for compound verbs. Shaalan (2000) described a tool for translating the Arabic interrogative sentence into English. Chalabi (2001) presented an Arabic-to-English MT engine that allows any Arabic user to search and navigate through the Internet using the Arabic language. Othman et al. (2003) developed an efficient chart parser that will be used for translating Arabic sentence.

The proposed rule-based transfer MT tool described here is part of an ongoing research to automate the translation of expert systems between Arabic and English. This process translates the knowledge base, in particular, prompts, responses, explanation text, and advices. In CLAES¹, this tool is found to be essential in developing bilingual (English-Arabic) expert systems because both English and Arabic versions are needed for development, deployment, and usage purpose.

The next section outlines the overall architecture of the proposed English-Arabic bi-directional MT tool with illustrative examples of simple and complex transfers. In following section, we present the results of evaluation experiments. In a concluding section, we present some final remarks. Appendix I presents a classification of problems in the evaluation experiments.

2. The System Architecture

The structure of the bi-directional MT tool is shown in Figure 1. In this figure the arrows indicate the flow of information. The oval blocks indicate the basic modules of the system. Rectangular blocks represent the linguistic knowledge. This architecture describes the translation of a knowledge base in the agricultural domain, in particular, see Table 1: 1) prompts: noun phrases in the form of interrogative expressions, 2) responses: legal values in the form of noun phrases, 3) advices: in the form of imperative expressions and noun phrases, and 3) explanation text: in the form of verbal and nominal sentences.

1. Stands for Central Laboratory of Agricultural Expert Systems (CLAES), Agricultural Research Centre (ARC), Egypt, <http://www.claes.sci.eg>.

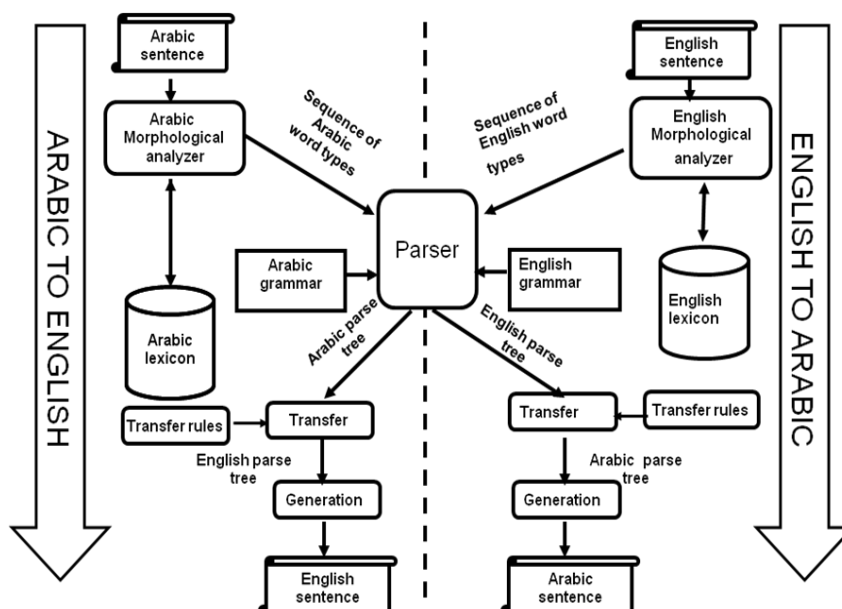


Figure 1. Overall Structure of English-Arabic bi-directional sentence Translator

| | English | Arabic |
|---------------------------------|---|--|
| Prompts | what is the abnormal leaves colour in the tunnel? | ما لون الأوراق الغير الطبيعي في الصوبة؟ |
| | what is the level of the nitrogen in the soil surface? | ما مستوى النتروجين في سطح التربة؟ |
| Responses (legal values) | bean mottle virus | فيروس تبقع الفول |
| | white growth with large black sclerotia | نمو أبيض مع أجسام حجرية سوداء |
| Advices (decisions) | Get rid of the remnants of the previous crop | تخلص من بقايا المحصول السابق |
| | spray when the number of nymphs is 3 on leaf | رش عندما يكون عدد الحوريات 3 على الورقة |
| Explanation | The unit for micro element for manganese during vegetative stage two | وحدة العناصر الصغرى من المنجنيز خلال مرحلة النمو الخضري الثانية |
| | the added fertilization elements are determined during the flowering stage by using the watery fertilization elements index | تحدد عناصر التسميد المضافة خلال مرحلة التزهير باستخدام ترتيب عناصر التسميد المائية |

Table 1. Examples of English-Arabic textual knowledge

The proposed system is based on the transfer approach with three main components for each direction of translation: analysis, transfer, and generation. The analysis component consists of two steps morphological analysis and parsing. For accomplishing morphological analysis the lexicon is necessary, which is a repository of word stems. As Arabic is morphologically rich language, the morphological analysis of Arabic-to-English MT is an important step that is needed before we proceed with parsing the input sentence (Rafea et al., 1993). The transfer component has a collection of tree-to-tree transformations to the analysis tree of source sentence in order to construct a target analysis tree. The generation component generates the target language words according to the semantic features of the source language words. In our bi-directional English-Arabic translator, the actual translation occurs in the transfer phase. To explain how the sentence transfer process is performed by our translation system, we provide illustrative examples in Figure 2 through Figure 3 to show simple transfer of a noun phrase and compound transfer of a complete sentence, respectively. The former is an example showing that the syntactic transfer between English and Arabic noun phrase parse trees yields a representation in which word order is reversed. The later is a wider example showing the syntactic transfer between English sentence parse tree and Arabic verbal sentence parse tree yields a representation in which the Arabic VSO (verb-subject-object) order is transformed into the English SVO order.

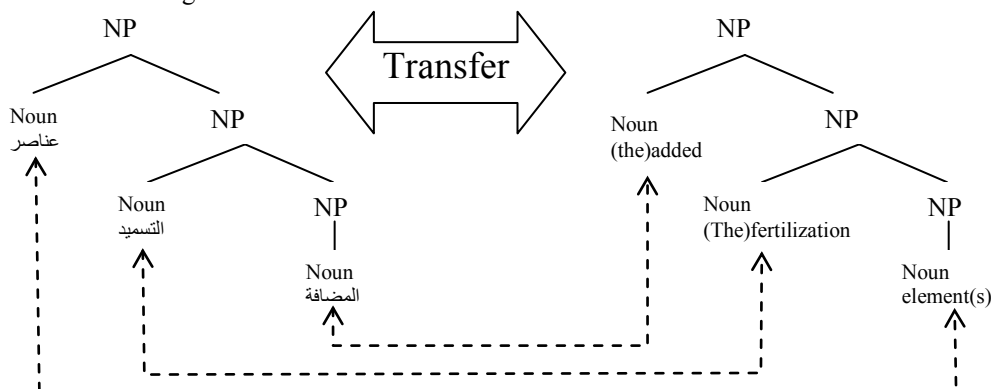


Figure 2. Simple Transfer of Noun Phrase

3. Automatic Evaluation

To meet the demands of a rapid MT evaluation method, various automatic MT evaluation methods have been proposed in recent years. These include the BiLingual Evaluation Understudy (BLEU) (Papineni et al., 2002; Akiba et al., 2004). BLEU has attracted many MT researchers, who have used it to demonstrate the quality of their novel approaches to developing MT systems. BLEU is an automatic scoring method based on the precisions of N-grams. The precision of N-grams is calculated against reference translations produced by human translators. The results of BLEU

is a score in the range of [0,1], with 1 indicating a perfect match. In order to evaluate the quality of our MT system by the Bleu tool we conducted two experiments in each direction of translation, i.e., from English to Arabic, and vice versa.

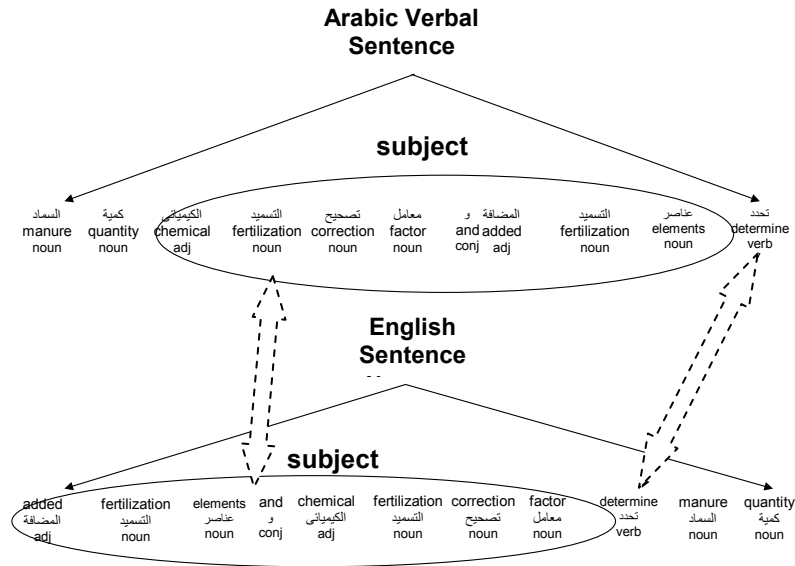


Figure 3. Compound Transfer of verb and subject of a sentence

A set of real parallel 100 phrases and sentences from both English and Arabic versions of agricultural expert systems at CLAES, was used as a gold standard reference test data. This set consists of 23 advises, 46 prompts, and 31 explanation and responses. The evaluation methodology is performed as follows: 1) Run the system on the test data, 2) Automatically evaluate the system output against the reference translation and get results of the BLEU score, 3) Classify the problems that arise from mismatches between the two translations, 4) For problems that needs an alternative reference translation such as synonyms, prepare a second reference translation for the identified problems, and 5) Rerun the system on the same test data using both reference translations and present the results of improvements.

3.1. English to Arabic evaluation experiment

The automatic evaluation results of experiment I are shown in Table 2. There are 9 classifications of problems that arise from the divergences and mismatches between system output and reference translation which is shown in Table 6. As for problems 1, 4, 5, and 6, we made the changes on a second reference translation but for the remaining problems they are not solved at the

moment as more research is needed to decide on their translations. Table 3 presents the automatic evaluation results of experiment IV which shows an improvement from 0.4504 to 0.6427.

| | BLEU Score |
|----------------------------------|-------------------|
| Advices | 0.5147 |
| Prompts | 0.4433 |
| Explanation and responses | 0.4703 |
| Overall | 0.4504 |

Table 2. Results of automatic evaluation in Experiment I

| | BLEU Score |
|----------------------------------|-------------------|
| Advices | 0.7673 |
| Prompts | 0.6549 |
| Explanation and responses | 0.6156 |
| Overall | 0.6427 |

Table 3. Results of automatic evaluation in Experiment II

3.2. Arabic to English evaluation experiment

The automatic evaluation results of experiment III are shown in Table 4. There are 4 classifications of problems that arise from the divergences and mismatches between system output and reference translation which is shown in Table 7. As for problems 1 and 4, we made the changes on a second reference translation but for problems 2 and 3 they are not solved at the moment as more research is needed to decide on their translations. Table 5 presents the automatic evaluation results of experiment IV which shows an improvement from 0.4581 to 0.8122.

| | BLEU Score |
|----------------------------------|-------------------|
| Advices | 0.4019 |
| Prompts | 0.4988 |
| Explanation and responses | 0.5616 |
| Overall | 0.4581 |

Table 4. Results of automatic evaluation in Experiment III

| | BLEU Score |
|----------------------------------|-------------------|
| Advices | 0.8682 |
| Prompts | 0.7851 |
| Explanation and responses | 0.8169 |
| Overall | 0.8122 |

Table 5. Results of automatic evaluation in Experiment IV

6. Conclusions

In this paper, we described the development of a novel English-Arabic bi-directional rule-based transfer MT tool in the agriculture domain. The translation between monolingual English and Arabic expert systems leads to rapid development and deployment of agricultural expert systems when one version is available. However, in the current version we may need to resort to minor post editing. Moreover, this tool would facilitate knowledge acquisition process to be either in English when international agricultural domain experts are available or in Arabic from local domain experts, which lead to bridging the gap of the language barrier.

A set of gold standard parallel English-Arabic phrases and sentences selected from agricultural expert systems developed at CLAES, is used to evaluate our approach, as well as the quality of the output of the MT tool. The problems found are classified, explained, and possible improvements, to some extent, are dealt with. The overall evaluation results, according to the presented evaluation methodology, were satisfactory. The automatic evaluation under one reference set achieved a BLEU score of 0.4504 for English-to-Arabic direction and 0.4581 for Arabic-to-English direction, whereas for two reference sets achieved 0.6427 for English-to-Arabic direction and 0.8122 for Arabic-to-English direction. However, more investigations are needed in order to make further improvements. On possible future direction is to use semantic processing. Another direction is to invest in building parallel corpora in the agriculture domain and employ the statistical machine translation approach.

7. References

- Akiba Y., Federico M., Kando N., Nakaiwa H., Paul M., Tsujii J. "Overview of the IWSLT04 evaluation campaign", *In: Proceedings of the International Workshop on Spoken Language Translation*, Kyoto, Japan, pp. 1—12, 2004.
- Abdel Monem, A., Shaalan, K., Rafea, A., Baraka, H., "Generating Arabic Text in Multilingual Speech-to-Speech Machine Translation Framework", *Machine Translation*, Springer, Netherlands, 20(4): 205-258, December 2008.
- Al-barhamtoshy A., "Arabic to English Translator of Compound Verbs", *In Proceeding of the Annual Conference on Statistics, Computer Science, and Operations Research*, Cairo University, December 1995.
- Al-Sughaiyer I., Al-Kharashi I., "Arabic morphological analysis techniques: A comprehensive survey". *Journal of the American Society for Information Science and Technology*, 55(3):189—213, 2004.

- Chalabi A. Sakhr “Web-based Arabic-English MT engine”, *In proceeding of the ACL/EACL Arabic NLP Workshop*, 2001.
- El-Desouki A., Abd Elgawwad A., and Saleh M., “A Proposed Algorithm For English-Arabic Machine Translation System”, *In Proceeding of the 1st KFUPM Workshop on Information and Computer Sciences (WICS): Machine Translation*, Dhahran, Saudi Arabic, 1996.
- El-Saka T., Rafea A., Rafea M., Madkour M., “English to Arabic Knowledge Base Translation Tool”, *In Proceedings of the 7th International Conference on Artificial Intelligence Applications*, Cairo, Feb., 1999.
- Farghaly A., Shaalan K. “*Arabic Natural Language Processing: Challenges and Solutions*”, *ACM Transactions on Asian Language Information Processing (TALIP)*, the Association for Computing Machinery (ACM), 8 (4):1-22, December 2009.
- Ibrahim M., A Fast and Expert Machine Translation System involving Arabic Language, Ph. D. Thesis, Cranfield Institute of Technology, UK, 1991.
- Mokhtar H., Darwish N., Rafea A., “An automated system for English-Arabic translation of scientific texts (SEATS)”. *MT2000: machine translation and multilingual applications in the new millennium: international conference*, University of Exeter, British Computer Society, 20-22 November 2000.
- Othman E., Shaalan K., and Rafea A. “A Chart Parser for Analyzing Modern Standard Arabic Sentence”, *In proceedings of the MT Summit IX Workshop on Machine Translation for Semitic Languages: Issues and Approaches*, New Orleans, Louisiana, USA, 2003.
- Papineni K., Roukos S., Ward T., Zhu W-J. BLEU: a Method for Automatic Evaluation of Machine Translation. *In: 40th annual meeting of the Association for Computational Linguistics (ACL)*, Philadelphia, PA, pp.311—318, 2002.
- Pease C. and Boushaba A., “Towards an Automatic Translation of Medical Terminology and Texts into Arabic”, *In Proceedings of the Translation in the Arab World, King Fahd Advanced School of Translation*, Nov. 27-30, 1996.
- Rafea, A., Sabry, M., El-Ansary, R., Samir, S., “Al-Mutargem: A Machine Translator for Middle East News”, *In Proceedings of the 3rd International Conference and Exhibition on Multi-lingual Computing*, December 1992.
- Rafea A., Shaalan K., “Lexical Analysis of Inflected Arabic words using Exhaustive Search of an Augmented Transition Network”, *Software Practice and Experience*, John Wiley & sons Ltd., UK,23(6):567-588, June 1993.
- Ryding, K. Reference Grammar of Modern Standard Arabic, Cambridge University Press, Cambridge, UK, 2005.

Shaalán K., “Machine Translation of Arabic Interrogative Sentence into English”, *In Proceeding of the 8th International conference on Artificial Intelligence Applications*, pp. 473-483, Egyptian Computer Society (EGS), Egypt, 2000.

Shaalán, K. ,Rafea, A., Abdel Monem, A., Baraka, H., “*Machine translation of English noun phrases into Arabic*”, *The International Journal of Computer Processing of Oriental Languages (IJCPOL)*, 17(2):121—134, 2004.

Shaalán K., “*Rule-based Approach in Arabic Natural Language Processing*”, Special Issue on Advances in Arabic Language Processing, the International Journal on Information and Communication Technologies (IJICT), Serial Publications, New Delhi, India, June 2010. Submitted for publication.

Trujillo A. *Translation Engines: Techniques for Machine Translation*, Springer Verlag, London, UK. 1999.

8. Appendix I: classification of problems in experiments I & III

| | | |
|--|--|-----------|
| 1. Difference due to using a synonym of the target Arabic noun | the added fertilization elements are determined during the flowering stage by using the watery fertilization elements index | Source |
| | يحدد عناصر التسميد المضاف خلال مرحلة التزهير باستخدام فهرس عناصر التسميد المائي | Reference |
| | يحدد عناصر التسميد المضاف خلال مرحلة التزهير باستخدام ترتيب عناصر التسميد المائي | Output |
| 2. Different translation of a preposition | The melted fertilization elements index in water for nitrogen during the second vegetative growth stage in kgm Fert/m ³ | Source |
| | ترتيب عناصر التسميد المذابة في الماء من النيتروجين خلال مرحلة النمو الخضري الثانية في كجم تسميد/متر ³ | Reference |
| | ترتيب عناصر التسميد المذابة في الماء من النيتروجين خلال مرحلة النمو الخضري الثانية بكجم تسميد/متر ³ | Output |
| 3. Misinterpret Arabic conjunction of words as English conjunction of phrases | The used fertilizers units total quantity determines the season length based on current and previous quantity of manure | Source |
| | يحدد إجمالي كمية وحدات الاسمدة المستخدمة طول العروة بناء على الكمية الحالية و الكمية السابقة للسماد | Reference |
| | يحدد إجمالي وحدات الاسمدة المستخدمة طول العروة بناء على الحالية و كمية سابقة للسماد | Output |
| 4. An optional pronoun might come after the Arabic interrogative particle | What is the abnormal growth colour on the fruits? | Source |
| | ما هو لون النمو الغير طبيعي للثمار؟ | Reference |
| | ما لون النمو الغير طبيعي للثمار؟ | Output |
| 5. Some words may have either sound | What is the shape of the irregular fruits? | Source |
| | ما شكل الثمار غير المنتظمة؟ | Reference |

| | | |
|--|--|-----------|
| plural feminine noun or broken (irregular) plural | ما شكل الثمرات غير المنتظمة؟ | Output |
| 6. Non-standardization of the Arabic Written letters | “soil”, “second”, etc. | Source |
| | "الثاني" "تريه" | Reference |
| | "الثاني" "تربة" | Output |
| 7. Disagreement in present tense prefix of an Arabic verb | the added fertilization elements quantity and the chemical fertilizer correction factor determines the manure quantity and the unit during the flowering stage | Source |
| | تحدد كمية عناصر التسميد المضافة و معامل تصحيح السماد الكيميائي كمية و وحدة السماد خلال مرحلة التزهير | Reference |
| | يحدد كمية عناصر التسميد المضافة و معامل تصحيح السماد الكيميائي كمية و وحدة السماد خلال مرحلة التزهير | Output |
| 8. Disagreement in gender between the adjective and the noun it modifies | The fertilization quantity from magnesium during the second vegetative growth stage in kg Fert/m ³ | Source |
| | كمية التسميد من الماغنسيوم خلال مرحلة النمو الخضري الثانية بكمج تسميدة/متر ³ | Reference |
| | كمية التسميد من الماغنسيوم خلال مرحلة النمو الخضري الثاني بكمج تسميدة/متر ³ | Output |
| 9. missing definite article in the Arabic noun | the drippers number and the dripper flow rate determine the irrigation motor time in minutes | Source |
| | يحدد عدد النقاطات و معدل تصرف النقاطات وقت موتور الري بالنقاطات | Reference |
| | يحدد عدد النقاطات و معدل تصرف النقاطات وقت موتور الري بدقائق | Output |

Table 6. Classification of problems in Experiment I

| | | |
|---|---|-----------|
| 1. Difference due to synonyms of a target English noun | كمية السماد العضوي | Source |
| | the organic fertilizer quantity | Reference |
| | the organic manure quantity | Output |
| 2. Selecting ambiguous category of a source Arabic word | رش المساحة المصابة فقط | Source |
| | spray the infected area only | Reference |
| | the infected area was sprayed only | Output |
| 3. Misinterpret English conjunction of words as Arabic conjunction of phrases | حساب كمية المياه الكلية في كل مرحلة باستخدام تاريخ البداية و النهاية | Source |
| | The total water quantity calculation for every stage by using the start and the end date | Reference |
| | the total water quantity calculation for every stage by using the start date and the end | Output |
| 4. Variant translation without the preposition “of” | كمية السماد | Source |
| | The quantity of fertilizer | Reference |
| | The fertilizer quantity | Output |

Table 7. Classification of problems in Experiment III