



HAL
open science

A game-theoretical model of debt and bankruptcy

Nguyen T. Khai, Alberto Bressan

► **To cite this version:**

Nguyen T. Khai, Alberto Bressan. A game-theoretical model of debt and bankruptcy. NETCO 2014, 2014, Tours, France. hal-01024662

HAL Id: hal-01024662

<https://inria.hal.science/hal-01024662>

Submitted on 16 Jul 2014

HAL is a multi-disciplinary open access archive for the deposit and dissemination of scientific research documents, whether they are published or not. The documents may come from teaching and research institutions in France or abroad, or from public or private research centers.

L'archive ouverte pluridisciplinaire **HAL**, est destinée au dépôt et à la diffusion de documents scientifiques de niveau recherche, publiés ou non, émanant des établissements d'enseignement et de recherche français ou étrangers, des laboratoires publics ou privés.

A game-theoretical model of debt and bankruptcy

Alberto Bressan and Khai T. Nguyen

Department of Mathematics, Penn State University

bressan@math.psu.edu , ktn2@psu.edu

Consider the control system of the borrower

$$\dot{x}(t) = I(x(t)) \cdot x(t) - u(t), \quad x(0) = \bar{x},$$

where

- x : total debt, measured as a fraction of the yearly income of the borrower ,
- $I(x)$: interest rate payed on debt at a given time ,
- $u \in [0, 1]$: payment rate, as a fraction of the income. This is the control variable for the borrower .

MODEL 1: The interest rate $I(x)$ is given a priori. This yields an optimal control problem for the borrower.

MODEL 2: The interest rate $I(x)$ is determined by the CREDIT RATING of the borrower, which in turn depends on his global feedback strategy for repaying the debt. This corresponds to a differential game between the borrower (leading player) and a pool of risk-neutral lenders.

MODEL 1: The interest rate $I(x)$ is given a priori. This yields an optimal control problem for the borrower.

MODEL 2: The interest rate $I(x)$ is determined by the CREDIT RATING of the borrower, which in turn depends on his global feedback strategy for repaying the debt. This corresponds to a differential game between the borrower (leading player) and a pool of risk-neutral lenders.

Borrower may go bankrupt

Let $\rho : [0, M[\rightarrow [0, \infty[$ be instantaneous **risk of bankruptcy** which depends on the total debt such that ρ is not decreasing and

$$\rho(0) = 0, \quad \lim_{x \rightarrow M-} \rho(x) = +\infty.$$

Here, M is a **maximum size of the debt**, so large that it immediately provokes bankruptcy. More precisely, if at time $\tau > 0$ the borrower is not yet bankrupt and the total debt is $x(\tau) = y$, then

$$\text{Prob.} \left\{ T_b \in [\tau, \tau + \varepsilon] \mid T_b > \tau, x(\tau) = y \right\} = \rho(y) \cdot \varepsilon + o(\varepsilon).$$

Here the random variable T_b denotes the **bankruptcy time**.

The larger the debt, the larger the risk of bankruptcy. Hence the interest rate charged by lenders has to increase. It is natural to assume

$$I(0) = 0, \quad \lim_{x \rightarrow M-} I(x) = +\infty.$$

Borrower may go bankrupt

Let $\rho : [0, M[\rightarrow [0, \infty[$ be instantaneous **risk of bankruptcy** which depends on the total debt such that ρ is not decreasing and

$$\rho(0) = 0, \quad \lim_{x \rightarrow M^-} \rho(x) = +\infty.$$

Here, M is a **maximum size of the debt**, so large that it immediately provokes bankruptcy. More precisely, if at time $\tau > 0$ the borrower is not yet bankrupt and the total debt is $x(\tau) = y$, then

$$\text{Prob.} \left\{ T_b \in [\tau, \tau + \varepsilon] \mid T_b > \tau, x(\tau) = y \right\} = \rho(y) \cdot \varepsilon + o(\varepsilon).$$

Here the random variable T_b denotes the **bankruptcy time**.

The larger the debt, the larger the risk of bankruptcy. Hence the interest rate charged by lenders has to increase. It is natural to assume

$$I(0) = 0, \quad \lim_{x \rightarrow M^-} I(x) = +\infty.$$

Borrower may go bankrupt

Let $\rho : [0, M[\rightarrow [0, \infty[$ be instantaneous **risk of bankruptcy** which depends on the total debt such that ρ is not decreasing and

$$\rho(0) = 0, \quad \lim_{x \rightarrow M^-} \rho(x) = +\infty.$$

Here, M is a **maximum size of the debt**, so large that it immediately provokes bankruptcy. More precisely, if at time $\tau > 0$ the borrower is not yet bankrupt and the total debt is $x(\tau) = y$, then

$$\text{Prob.} \left\{ T_b \in [\tau, \tau + \varepsilon] \mid T_b > \tau, x(\tau) = y \right\} = \rho(y) \cdot \varepsilon + o(\varepsilon).$$

Here the random variable T_b denotes the **bankruptcy time**.

The larger the debt, the larger the risk of bankruptcy. Hence the interest rate charged by lenders has to increase. It is natural to assume

$$I(0) = 0, \quad \lim_{x \rightarrow M^-} I(x) = +\infty.$$

Distribution function of T_b

If the size of the debt is $t \mapsto x(t)$, then the distribution function

$$\psi(t) \doteq \text{Prob.}\{T_b > t\}$$

is obtained by solving the linear Cauchy problem

$$\psi(0) = 1, \quad \psi'(t) = -\rho(x(t))\psi(t).$$

Namely,

$$\psi(t) = \exp\left\{-\int_0^t \rho(x(s)) ds\right\}.$$

Distribution function of T_b

If the size of the debt is $t \mapsto x(t)$, then the distribution function

$$\psi(t) \doteq \text{Prob.}\{T_b > t\}$$

is obtained by solving the linear Cauchy problem

$$\psi(0) = 1, \quad \psi'(t) = -\rho(x(t))\psi(t).$$

Namely,

$$\psi(t) = \exp\left\{-\int_0^t \rho(x(s)) ds\right\}.$$

Distribution function of T_b

If the size of the debt is $t \mapsto x(t)$, then the distribution function

$$\psi(t) \doteq \text{Prob.}\{T_b > t\}$$

is obtained by solving the linear Cauchy problem

$$\psi(0) = 1, \quad \psi'(t) = -\rho(x(t))\psi(t).$$

Namely,

$$\psi(t) = \exp\left\{-\int_0^t \rho(x(s)) ds\right\}.$$

Expected cost

Assume that

- $L(u)$ is the cost to the borrower for implementing the control u such that

$$L(0) = 0, \quad L' > 0, \quad L'' > 0, \quad \lim_{u \rightarrow 1^-} L(u) = +\infty.$$

- r is the discount rate.
- B is the bankruptcy cost to the borrower.

The total cost

$$J[u, \bar{x}] \doteq E \left[\int_0^{T_b} e^{-rt} L(u(t)) dt + B e^{-rT_b} \right] \quad (1)$$

$$= [\text{cost of making payment}] + [\text{bankruptcy cost}]. \quad (2)$$

Expected cost

Assume that

- $L(u)$ is the cost to the borrower for implementing the control u such that

$$L(0) = 0, \quad L' > 0, \quad L'' > 0, \quad \lim_{u \rightarrow 1^-} L(u) = +\infty.$$

- r is the discount rate.
- B is the bankruptcy cost to the borrower.

The total cost

$$J[u, \bar{x}] \doteq E \left[\int_0^{T_b} e^{-rt} L(u(t)) dt + B e^{-rT_b} \right] \quad (1)$$

$$= [\text{cost of making payment}] + [\text{bankruptcy cost}]. \quad (2)$$

Optimal control problem for the borrower

One computes

$$\begin{aligned} E \left[\int_0^{T_b} e^{-rt} L(u(t)) dt + B e^{-rT_b} \right] \\ = \int_0^\infty \exp \left\{ -rt - \int_0^t \rho(x(s)) ds \right\} \left\{ \rho(x(t))B + L(u(t)) \right\} dt \end{aligned}$$

(P) **Optimal control problem with bankruptcy risk.** Given the initial size \bar{x} of the debt, find a control $t \mapsto u(t) \in [0, 1]$ which minimizes the expected cost

$$J[\bar{x}, u] \doteq \int_0^\infty \exp \left\{ -rt - \int_0^t \rho(x(s)) ds \right\} \left\{ \rho(x(t))B + L(u(t)) \right\} dt, \quad (3)$$

subject to

$$\dot{x}(t) = I(x(t))x(t) - u(t), \quad x(0) = \bar{x}. \quad (4)$$

Optimal control problem for the borrower

One computes

$$\begin{aligned} E \left[\int_0^{T_b} e^{-rt} L(u(t)) dt + B e^{-rT_b} \right] \\ = \int_0^\infty \exp \left\{ -rt - \int_0^t \rho(x(s)) ds \right\} \left\{ \rho(x(t))B + L(u(t)) \right\} dt \end{aligned}$$

(P) **Optimal control problem with bankruptcy risk.** Given the initial size \bar{x} of the debt, find a control $t \mapsto u(t) \in [0, 1]$ which minimizes the expected cost

$$J[\bar{x}, u] \doteq \int_0^\infty \exp \left\{ -rt - \int_0^t \rho(x(s)) ds \right\} \left\{ \rho(x(t))B + L(u(t)) \right\} dt, \quad (3)$$

subject to

$$\dot{x}(t) = I(x(t))x(t) - u(t), \quad x(0) = \bar{x}. \quad (4)$$

Hamilton-Jacobi equation

The value function

$$V(\bar{x}) = \min J[u, \bar{x}]$$

is a viscosity solution of

$$V(x) = \frac{1}{r + \rho(x)} \cdot H(x, V'(x)), \quad (5)$$

with

$$V(0) = 0 \quad , \quad V(M) = B.$$

Hamiltonian function

$$H(x, \xi) = \min_{\omega \in [0,1]} \left\{ L(\omega) - \xi \cdot \omega \right\} + \xi \cdot I(x)x + \rho(x)B. \quad (6)$$

The corresponding optimal feedback control is

$$u^*(\xi) = \arg \min_{\omega \in [0,1]} \{L(\omega) - \xi \cdot \omega\}. \quad (7)$$

Hamilton-Jacobi equation

The value function

$$V(\bar{x}) = \min J[u, \bar{x}]$$

is a viscosity solution of

$$V(x) = \frac{1}{r + \rho(x)} \cdot H(x, V'(x)), \quad (5)$$

with

$$V(0) = 0 \quad , \quad V(M) = B.$$

Hamiltonian function

$$H(x, \xi) = \min_{\omega \in [0,1]} \left\{ L(\omega) - \xi \cdot \omega \right\} + \xi \cdot I(x)x + \rho(x)B. \quad (6)$$

The corresponding optimal feedback control is

$$u^*(\xi) = \arg \min_{\omega \in [0,1]} \{L(\omega) - \xi \cdot \omega\}. \quad (7)$$

Hamilton-Jacobi equation

The value function

$$V(\bar{x}) = \min J[u, \bar{x}]$$

is a viscosity solution of

$$V(x) = \frac{1}{r + \rho(x)} \cdot H(x, V'(x)), \quad (5)$$

with

$$V(0) = 0 \quad , \quad V(M) = B.$$

Hamiltonian function

$$H(x, \xi) = \min_{\omega \in [0,1]} \left\{ L(\omega) - \xi \cdot \omega \right\} + \xi \cdot I(x)x + \rho(x)B. \quad (6)$$

The corresponding optimal feedback control is

$$u^*(\xi) = \arg \min_{\omega \in [0,1]} \{ L(\omega) - \xi \cdot \omega \}. \quad (7)$$

A viscosity super solution

Let $W(x)$ be the cost achieved by the strategy that keeps the debt constantly equal to x , i.e.,

$$W(x) = J[x, u] \quad \text{with} \quad u = I(x)x.$$

Thus,

$$W(x) = \begin{cases} \frac{1}{r + \rho(x)} \cdot H^{\max}(x) & \text{if } 0 \leq x < x^*, \\ +\infty & \text{if } x \geq x^*, \end{cases} \quad (8)$$

where

$$H^{\max}(x) \doteq \max_{\xi} H(x, \xi) = H(x, \xi^{\#}(x)).$$

and x^* is defined by $I(x^*)x^* = 1$.

A viscosity super solution

Let $W(x)$ be the cost achieved by the strategy that keeps the debt constantly equal to x , i.e.,

$$W(x) = J[x, u] \quad \text{with} \quad u = I(x)x.$$

Thus,

$$W(x) = \begin{cases} \frac{1}{r + \rho(x)} \cdot H^{\max}(x) & \text{if } 0 \leq x < x^*, \\ +\infty & \text{if } x \geq x^*, \end{cases} \quad (8)$$

where

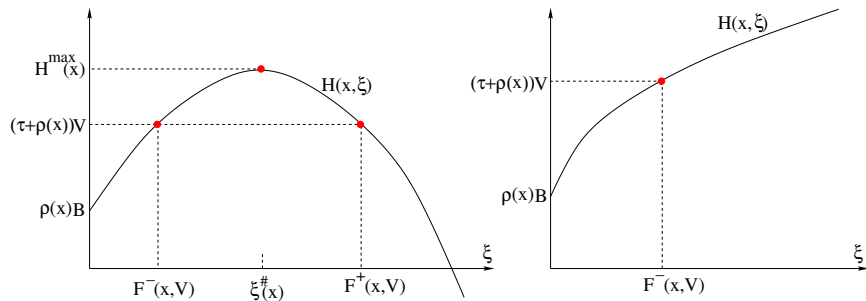
$$H^{\max}(x) \doteq \max_{\xi} H(x, \xi) = H(x, \xi^{\#}(x)).$$

and x^* is defined by $I(x^*)x^* = 1$.

Differential inclusion

Hamilton-Jacobi equation

$$V(x) = \frac{1}{r + \rho(x)} \cdot H(x, V'(x)), \quad (9)$$



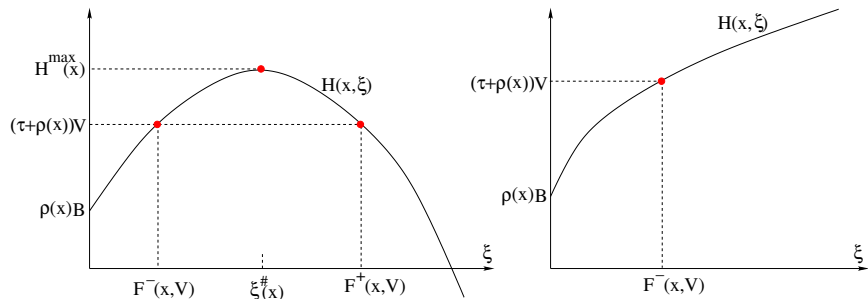
$$V' \in \left\{ F^-(x, V), F^+(x, V) \right\}, \quad (10)$$

where $V' = F^-$ and $V' = F^+$ are the two solutions of the equation (9).

Differential inclusion

Hamilton-Jacobi equation

$$V(x) = \frac{1}{r + \rho(x)} \cdot H(x, V'(x)), \quad (9)$$



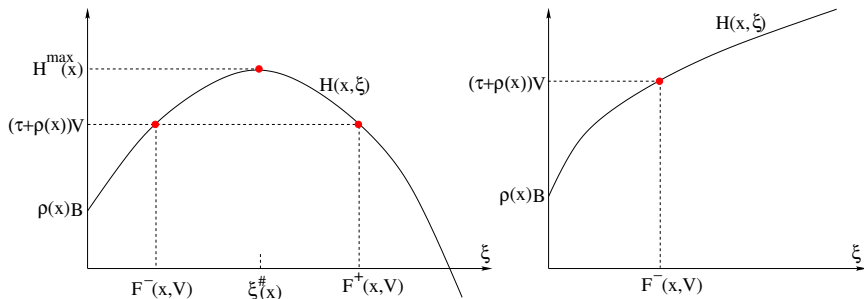
$$V' \in \left\{ F^-(x, V), F^+(x, V) \right\}, \quad (10)$$

where $V' = F^-$ and $V' = F^+$ are the two solutions of the equation (9).

Differential inclusion

Hamilton-Jacobi equation

$$V(x) = \frac{1}{r + \rho(x)} \cdot H(x, V'(x)), \quad (9)$$



$$V' \in \left\{ F^-(x, V), F^+(x, V) \right\}, \quad (10)$$

where $V' = F^-$ and $V' = F^+$ are the two solutions of the equation (9).

Initial data

- The value $V' = F^+(x, V) \geq \xi^\#(x)$ corresponds to the choice of an optimal control such that $\dot{x} < 0$.
- The value $V' = F^-(x, V) \leq \xi^\#(x)$ corresponds to the choice of an optimal control such that $\dot{x} > 0$.

How to choose the appropriate initial data?

Let $t \mapsto x(t)$ be an optimal trajectory $t \mapsto x(t)$ such that

$$\lim_{t \rightarrow \infty} x(t) = x_0.$$

Hence, as $t \rightarrow \infty$, the debt remains almost constant, close to x_0 . We thus expect that $V(x(t)) \rightarrow W(x_0)$. Therefore, as initial data, we should choose

$$V(x_0) = W(x_0) \quad \text{for some } x_0.$$

Initial data

- The value $V' = F^+(x, V) \geq \xi^\#(x)$ corresponds to the choice of an optimal control such that $\dot{x} < 0$.
- The value $V' = F^-(x, V) \leq \xi^\#(x)$ corresponds to the choice of an optimal control such that $\dot{x} > 0$.

How to choose the appropriate initial data?

Let $t \mapsto x(t)$ be an optimal trajectory $t \mapsto x(t)$ such that

$$\lim_{t \rightarrow \infty} x(t) = x_0.$$

Hence, as $t \rightarrow \infty$, the debt remains almost constant, close to x_0 . We thus expect that $V(x(t)) \rightarrow W(x_0)$. Therefore, as initial data, we should choose

$$V(x_0) = W(x_0) \quad \text{for some } x_0.$$

Initial data

- The value $V' = F^+(x, V) \geq \xi^\#(x)$ corresponds to the choice of an optimal control such that $\dot{x} < 0$.
- The value $V' = F^-(x, V) \leq \xi^\#(x)$ corresponds to the choice of an optimal control such that $\dot{x} > 0$.

How to choose the appropriate initial data?

Let $t \mapsto x(t)$ be an optimal trajectory $t \mapsto x(t)$ such that

$$\lim_{t \rightarrow \infty} x(t) = x_0.$$

Hence, as $t \rightarrow \infty$, the debt remains almost constant, close to x_0 . We thus expect that $V(x(t)) \rightarrow W(x_0)$. Therefore, as initial data, we should choose

$$V(x_0) = W(x_0) \quad \text{for some } x_0.$$

Initial data

- The value $V' = F^+(x, V) \geq \xi^\#(x)$ corresponds to the choice of an optimal control such that $\dot{x} < 0$.
- The value $V' = F^-(x, V) \leq \xi^\#(x)$ corresponds to the choice of an optimal control such that $\dot{x} > 0$.

How to choose the appropriate initial data?

Let $t \mapsto x(t)$ be an optimal trajectory $t \mapsto x(t)$ such that

$$\lim_{t \rightarrow \infty} x(t) = x_0.$$

Hence, as $t \rightarrow \infty$, the debt remains almost constant, close to x_0 . We thus expect that $V(x(t)) \rightarrow W(x_0)$. Therefore, as initial data, we should choose

$$V(x_0) = W(x_0) \quad \text{for some } x_0.$$

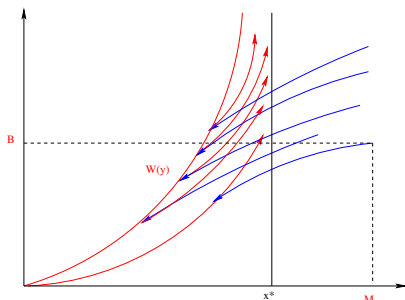
Value function

For any $x_0 \in [0, x^*[$, let $Z(\cdot, x_0)$ be the solution of

$$Z'(x) = \begin{cases} F^+(x, Z) & \text{if } x_0 < x < x^*, \\ F^-(x, Z) & \text{if } 0 \leq x < x_0, \end{cases} \quad Z(x_0) = W(x_0). \quad (11)$$

Moreover, let $Z(\cdot, M)$ be the solution of

$$Z'(x) = F^-(x, Z) \quad \text{and} \quad Z(M-) = B.$$



The value function for the optimization problem (3)–(4) is

$$V(x) = \min_{x_0 \in [0, x^*] \cup \{M\}} Z(x; x_0). \quad (12)$$

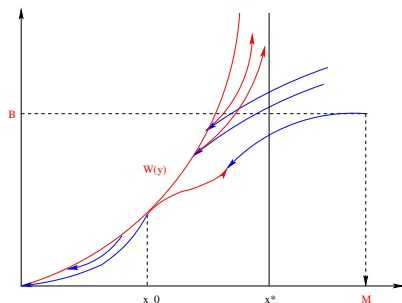
Characterization of the value function

Theorem 1. Let the functions I, ρ, L satisfy the standard assumptions. Let W be the function in (8) and consider the set

$$\mathcal{A} \doteq \left\{ x_0 \in [0, M]; H^{\max}(x_0) = H(x_0, W'(x_0)) \right\} \cup \{0, M\}. \quad (13)$$

Then the value function for the optimization problem (3)-(4) is given by

$$V(x) = \min_{x_0 \in \mathcal{A}} Z(x; x_0). \quad (14)$$



$$H^{\max}(x_0) = H(x_0, W'(x_0))$$

\Leftrightarrow

$$\begin{aligned} F^+(x_0, W(x_0)) &= F^-(x_0, W(x_0)) \\ &= W'(x_0). \end{aligned}$$

Proof

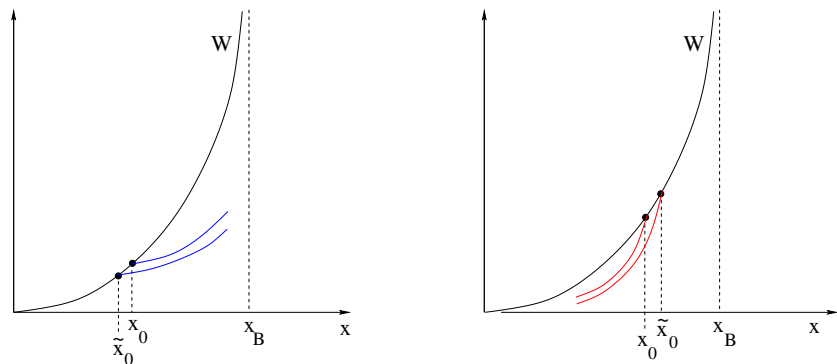


Figure : Left: if $F^\pm(x_0, W(x_0)) < W'(x_0)$, then we can choose a smaller initial value $\tilde{x}_0 < x_0$ and obtain a lower cost function.

Right: if $F^\pm(x_0, W(x_0)) > W'(x_0)$, then we can choose a bigger initial value $\tilde{x}_0 > x_0$ and obtain a lower cost function.

A game-theoretical model

Expected pay-off for a lender

A pool-risk neutral lenders charge an interest depending on the bankruptcy risk.

- σ : fraction of capital recovered by the lenders if bankruptcy occurs ,

$$0 < \sigma < 1.$$

- T_e : the (random) expiration date of the loan

$$\text{Prob. } \{T_e > t\} = e^{-\lambda t}.$$

For a unit amount of loan, the lender will receive the payoff

$$\left\{ \begin{array}{ll} \int_0^{T_e} l(s) e^{-rs} ds + e^{-rT_e} & \text{if } T_e < T_b, \\ \int_0^{T_b} l(s) e^{-rs} ds + \sigma e^{-rT_b} & \text{if } T_e \geq T_b. \end{array} \right. \quad (15)$$

Expected pay-off for a lender

A pool-risk neutral lenders charge an interest depending on the bankruptcy risk.

- σ : fraction of capital recovered by the lenders if bankruptcy occurs ,

$$0 < \sigma < 1 .$$

- T_e : the (random) expiration date of the loan

$$\text{Prob. } \{T_e > t\} = e^{-\lambda t} .$$

For a unit amount of loan, the lender will receive the payoff

$$\left\{ \begin{array}{ll} \int_0^{T_e} I(s) e^{-rs} ds + e^{-rT_e} & \text{if } T_e < T_b, \\ \int_0^{T_b} I(s) e^{-rs} ds + \sigma e^{-rT_b} & \text{if } T_e \geq T_b. \end{array} \right. \quad (15)$$

Expected pay-off for a lender

A pool-risk neutral lenders charge an interest depending on the bankruptcy risk.

- σ : fraction of capital recovered by the lenders if bankruptcy occurs ,

$$0 < \sigma < 1.$$

- T_e : the (random) expiration date of the loan

$$\text{Prob. } \{T_e > t\} = e^{-\lambda t}.$$

For a unit amount of loan, the lender will receive the payoff

$$\left\{ \begin{array}{ll} \int_0^{T_e} I(s) e^{-rs} ds + e^{-rT_e} & \text{if } T_e < T_b, \\ \int_0^{T_b} I(s) e^{-rs} ds + \sigma e^{-rT_b} & \text{if } T_e \geq T_b. \end{array} \right. \quad (15)$$

An ODE for the interest rate

Risk-neutral assumption implies that

$$E \left[\int_0^{T_e \wedge T_b} I(x(s)) e^{-rs} ds + \begin{cases} e^{-rT_e} & \text{if } T_e < T_b \\ \sigma e^{-rT_b} & \text{if } T_e \geq T_b \end{cases} \right]_{x(0)=\bar{x}} = 1. \quad (16)$$

Recalling that

$$P(t, \bar{x}) = \text{Prob.}\{T_b > t; x(0) = \bar{x}\} = \exp \left\{ - \int_0^t \rho(x(s)) ds \right\}$$

the interest rate is recovered by solving the ODEs

$$I'(\bar{x}) = \frac{\rho(\bar{x}) + \lambda + r}{I(\bar{x})\bar{x} - u(\bar{x})} \cdot (I(\bar{x}) - r) + \frac{\lambda(\sigma - 1)\rho(\bar{x})}{I(\bar{x})\bar{x} - u(\bar{x})}. \quad (17)$$

System of equations

Let V be the value function of the optimal problem for the borrower and

$$H(x, \alpha, \xi) \doteq \min_{\omega \in [0,1]} \left\{ L(\omega) - \omega \xi \right\} + \alpha x \xi + \rho(x) B.$$

The system of equations

$$\left\{ \begin{array}{l} V(x) = \frac{1}{r + \rho(x)} \cdot H(x, I(x), V'(x)), \\ I'(x) = \frac{\rho(x) + \lambda + r}{I(x)x - u(x)} \cdot (I(x) - r) + \frac{\lambda(\sigma - 1)\rho(x)}{I(x)x - u(x)}, \\ u(x) = \arg \min_{\omega \in [0,1]} \{L(\omega) - V'(x) \cdot \omega\}, \end{array} \right. \quad (18)$$

together with the boundary conditions

$$V(0) = 0, \quad V(M) = B. \quad (19)$$

Existence of admissible solution

Definition 1. A pair of functions (V, I) defined for $x \in [0, M]$ is an *admissible solution* of (18) if the following holds

- $I : [0, M] \mapsto [0, +\infty]$ is **lower semicontinuous with at most countably many points of discontinuity**, and satisfies the second equation in (18) at a.e. point x where $I(x) < +\infty$.
- V is a continuous function, satisfying the boundary conditions (19). It provides a solution to the differential inclusion, **with derivative V' having at most countably many points of jump**. At each point y where V' is discontinuous, the left and right limits satisfy

$$V'(y-) \geq V'(y+).$$

Theorem 2. *Let the functions ρ, L satisfy the standard assumptions. Then the problem (18)-(19) has an admissible solution.*

The admissible solution constructed in Theorem 2 provides a Nash equilibrium to the debt and bankruptcy game.

Existence of admissible solution

Definition 1. A pair of functions (V, I) defined for $x \in [0, M]$ is an *admissible solution* of (18) if the following holds

- $I : [0, M] \mapsto [0, +\infty]$ is **lower semicontinuous with at most countably many points of discontinuity**, and satisfies the second equation in (18) at a.e. point x where $I(x) < +\infty$.
- V is a continuous function, satisfying the boundary conditions (19). It provides a solution to the differential inclusion, **with derivative V' having at most countably many points of jump**. At each point y where V' is discontinuous, the left and right limits satisfy

$$V'(y-) \geq V'(y+).$$

Theorem 2. *Let the functions ρ, L satisfy the standard assumptions. Then the problem (18)-(19) has an admissible solution.*

The admissible solution constructed in Theorem 2 provides a Nash equilibrium to the debt and bankruptcy game.

THANK YOU