



**HAL**  
open science

# Data-driven HRF estimation for encoding and decoding models

Fabian Pedregosa, Michael Eickenberg, Philippe Ciuciu, Bertrand Thirion,  
Alexandre Gramfort

► **To cite this version:**

Fabian Pedregosa, Michael Eickenberg, Philippe Ciuciu, Bertrand Thirion, Alexandre Gramfort. Data-driven HRF estimation for encoding and decoding models. 2014. hal-00952554v3

**HAL Id: hal-00952554**

**<https://inria.hal.science/hal-00952554v3>**

Preprint submitted on 14 Jul 2014 (v3), last revised 6 Oct 2014 (v4)

**HAL** is a multi-disciplinary open access archive for the deposit and dissemination of scientific research documents, whether they are published or not. The documents may come from teaching and research institutions in France or abroad, or from public or private research centers.

L'archive ouverte pluridisciplinaire **HAL**, est destinée au dépôt et à la diffusion de documents scientifiques de niveau recherche, publiés ou non, émanant des établissements d'enseignement et de recherche français ou étrangers, des laboratoires publics ou privés.

# Data-driven HRF estimation for encoding and decoding models

Fabian Pedregosa<sup>1,2,4,\*</sup>, Michael Eickenberg<sup>1,2,4,\*</sup>, Philippe Ciuciu<sup>2,4,\*</sup>, Bertrand Thirion<sup>2,4,\*</sup>, Alexandre Gramfort<sup>3,4,\*</sup>

---

## Abstract

Despite the common usage of a canonical, data-independent, hemodynamic response function (HRF), it is known that the shape of the HRF varies across brain regions and subjects. This suggests that a data-driven estimation of this function could lead to more statistical power when modeling BOLD fMRI data. However, unconstrained estimation of the HRF can yield highly unstable results when the number of free parameters is large. We develop a method for the joint estimation of activation and HRF using a rank constraint causing the estimated HRF to be equal across events/conditions, yet permitting it to be different across voxels. Model estimation leads to an optimization problem that we propose to solve with an efficient quasi-Newton method exploiting fast gradient computations. This model, called GLM with Rank-1 constraint (R1-GLM), can be extended to the setting of GLM with separate designs which has been shown to improve decoding accuracy in brain activity decoding experiments. We compare 10 different HRF modeling methods in terms of encoding and decoding score in two different datasets. Our results show that the R1-GLM model significantly outperforms competing methods in both encoding and decoding settings, positioning it as an attractive method both from the points of view of accuracy and computational efficiency.

*Keywords:* Functional MRI (fMRI), Hemodynamic response function (HRF), machine learning, optimization, BOLD, Finite impulse response (FIR), decoding, encoding

---

## 1. Introduction

The use of machine learning techniques to predict the cognitive state of a subject from their functional MRI (fMRI) data recorded during task performance has become a popular analysis approach for neuroimaging studies over the last decade (Cox and Savoy, 2003; Haynes and Rees, 2006). It is now commonly referred to as *brain reading* or *decoding*. In this setting, the BOLD signal is used to predict the task or stimulus that the subject was performing. Although it is possible to perform decoding directly on raw BOLD signal (Mourão Miranda et al., 2007; Miyawaki et al., 2008), the common approach in fast event-related designs

---

\*Corresponding author. Email: fabian.pedregosa@inria.fr. Tel: +33 1 69 08 79 92

<sup>1</sup>Authors contributed equally

<sup>2</sup>Parietal Team, INRIA Saclay-Île-de-France, Saclay, France

<sup>3</sup>Institut Mines-Telecom, Telecom ParisTech, CNRS LTCI, 37-39 Rue Dareau, 75014 Paris, France

<sup>4</sup>NeuroSpin, CEA Saclay, Bat. 145, 91191 Gif-sur-Yvette Cedex, France

consists in extracting the activation coefficients (beta-maps) from the BOLD signal to perform the decoding analysis on these estimates. Similarly, in the voxel-based *encoding* models (Kay et al., 2008; Naselaris et al., 2011), the activation coefficients are extracted from the BOLD signal, this time to learn a model to predict the BOLD response in a given voxel, based on a given representation of the stimuli. In addition, a third approach, known as representational similarity analysis or RSA (Kriegeskorte et al., 2008) takes as input the activation coefficients. In this case a comparison is made between the similarity observed in the activation coefficients and the one associated with the stimuli.

These activation coefficients are computed by means of the General Linear Model (GLM) (Friston et al., 1995). While this approach has been successfully used in a wide range of studies, it does suffer from limitations (Poline and Brett, 2012). For instance, the GLM commonly relies on a data-independent *canonical* form of the hemodynamic response function (HRF) to estimate the activation coefficient. However it is known (Handwerker et al., 2004; Badillo et al., 2013b) that the shape of this response function can vary substantially across subjects and brain regions, suggesting that an adaptive modeling of this response function should improve the accuracy of subsequent analysis.

To overcome the aforementioned limitation, Finite Impulse Response (FIR) models have been proposed within the GLM framework (Dale, 1999; Glover, 1999). These models do not assume any particular shape for the HRF and amount to estimating a large number of parameters in order to identify it. While the FIR-based modeling makes it possible to estimate the activation coefficient and the HRF simultaneously, the increased flexibility comes at the cost of robustness and the estimator is prone to overfitting. In general, FIR models are most appropriate for studies focused on the characterization of the shape of the hemodynamic response, and not for studies that are primarily focused on detecting activation (Poldrack et al., 2011, Chapter 5).

Several strategies aiming at reducing the number of degrees of freedom of the FIR model - and thus at limiting the risk of overfitting - have been proposed. One possibility is to constrain the shape of the HRF to be a linear combination of a small number of basis functions. A common choice of basis is formed by three elements consisting of a reference HRF as well as its time and dispersion derivatives (Friston et al., 1998), although it is also possible to compute a basis set that spans a desired function space (Woolrich et al., 2004). More generally, one can also define a parametric model of the HRF and estimate the parameters that best fit this function (Lindquist and Wager, 2007). However, in this case the estimated HRF may no longer be a linear function of the input parameters.

Sensitivity to noise and overfitting can also be reduced through regularization. For example, temporal regularization has been used in the smooth FIR (Goutte et al., 2000; Ciuciu et al., 2003; Casanova et al., 2008) to favor solutions with small second order time derivative. These approaches require the setting of one or several hyperparameters, at the voxel or potentially at the parcel level (if several voxels in a pre-defined parcel are assumed to share some aspects of the HRF timecourse). Even if efficient techniques such as generalized cross-validation (Golub et al., 1979) can be used to choose the regularization parameters,

these methods are inherently more costly than basis-constrained methods. Basis-constrained methods also require setting the number of basis elements; however, this parameter is not continuous (as in the case of regularized methods), and in practice only few values are explored: for example the 3-element basis set with a reference HRF plus derivatives and the FIR model. This paper focuses on basis-constrained regularization of the HRF to avoid dealing with hyperparameter selection with the goal of remaining computationally attractive. A different approach to increase robustness of the estimates consists in linking the estimated HRF across a predefined brain parcel, taking advantage of the spatially dependent nature of fMRI (Wang et al., 2013). However, hemodynamically-informed parcellations (Chaari et al., 2012; Badillo et al., 2013a) rely on the computation of a large number of estimations at the voxel or sub-parcel level. In this setting, the development of voxel-wise estimation procedures is complementary to the development of parcellation methods in that more robust estimation methods at the voxel level would naturally translate into more robust parcellation methods. In this paper we focus on voxel-wise estimation methods. The possible extension of these methods to the parcel level is left for future work.

We propose a method for the simultaneous estimation of HRF and activation coefficients based on low-rank modeling. Within this model, and as in (Makni et al., 2008; Vincent et al., 2010), the HRF is constrained to be equal across the different conditions, yet permitting it to be different across voxels. Unlike previous works, we formulate this model as a constrained least squares problem, where the vector of coefficients is constrained to lie within the space of rank one matrices. We formulate the model within the framework of smooth optimization and use quasi-Newton methods to find the vector of estimates. This model was briefly presented in the conference paper (Pedregosa et al., 2013). Here we provide more experimental validation and a more detailed presentation of the method. We also added results using a GLM with separate designs (Mumford et al., 2012). Ten alternative approaches are now compared on two datasets. The solver has also been significantly improved to scale to full brain data.

The contributions of this paper are two-fold. First, we quantify the importance of HRF estimation in encoding and decoding models. While the benefit of data-driven estimates of the HRF have already been reported in the case of decoding (Turner et al., 2012) and encoding approaches (Vu et al., 2011), we here provide a comprehensive comparison of models. Second, we evaluate a method called *GLM with Rank-1 constraint (R1-GLM)* that improves encoding and decoding scores over state-of-the-art methods while remaining computationally tractable on a full brain volume. We propose an efficient algorithm for this method and discuss practical issues such as initialization. Finally, we provide access to a software implementation of the methods discussed in this paper.

**Notation:**  $\|\cdot\|$  and  $\|\cdot\|_\infty$  denote the Euclidean and infinity norm for vectors.  $I$  denotes the identity matrix and  $e_i$  denotes its  $i$ th column vector.  $\otimes$  denotes the Kronecker product and  $\text{vec}(A)$  denotes the concatenation of the columns of a matrix  $A$  into a single column vector.  $A^\dagger$  denotes the Moore-Penrose

pseudoinverse. Given two vectors  $a$  and  $b$ ,  $[a, b]$  represents the columnwise concatenation of the two vectors.

## 2. Methods

In this section we describe different methods for extracting the HRF and activation coefficients from BOLD signals. We will refer to each different stimulus as *condition* and we will call *trial* a unique presentation of a given stimulus. We will denote by  $k$  the total number of stimuli,  $y$  the BOLD signal at a single voxel and  $n$  the total number of images acquired.

### 2.1. The General Linear Model

The original GLM model (Friston et al., 1995) makes the assumption that the hemodynamic response is a linear transformation of the underlying neuronal signal. We define the  $n \times k$ -matrix  $X_{\text{GLM}}$  as the columnwise stacking of different regressors, each one defined as the convolution of a reference HRF (Boynton et al., 1996; Glover, 1999) with the stimulus onsets for the given condition. In this work we used as reference HRF the one provided by the software SPM 8 (Friston et al., 2011). Assuming additive white noise,  $n \geq k$  and  $X_{\text{GLM}}$  to be full rank, the vector of estimates is given by  $\hat{\beta}_{\text{GLM}} = X_{\text{GLM}}^\dagger y$ , where  $\hat{\beta}_{\text{GLM}}$  is a vector of size  $k$  representing the amplitude of each one of the conditions.

A popular modification of this setting consists in extending the GLM design matrix with the temporal and width derivatives of the reference HRF. This basis, formed by the reference HRF and its derivatives with respect to time and width parameters, will be used throughout this work. We will refer to it as the *3HRF basis*. In this case, each one of the basis elements is convolved with the stimulus onsets of each condition, obtaining a design matrix of size  $n \times 3k$ . This way, for each condition, we estimate the form of the HRF as a sum of basis functions that correspond to the first order Taylor expansion of the parametrization of the response function. Another basis set that will be used is the Finite Impulse Response (FIR) set. This basis set spans the complete ambient vector space (of dimension corresponding to its length) and it is thus a flexible model for capturing the HRF shape. It consists of the canonical unit vectors for the given duration of the estimated HRF. Other basis functions such as FMRIB’s Linear Optimal Basis Sets (Woolrich et al., 2004) are equally possible but were not considered in this work.

More generally, we can extend this approach to any set of basis functions. Given the set of basis functions  $B = [b_1, b_2, \dots, b_d]$ , the design matrix  $X_B$  is formed by successively stacking the regressors obtained by convolving each of the basis elements with the stimulus onsets of each condition. This results in a matrix of size  $n \times dk$  and under the aforementioned conditions the vector of estimates is given by  $\hat{\beta}_B = X_B^\dagger y$ . In this case,  $\hat{\beta}_B$  is no longer a vector of size  $k$ : it has length  $k \times d$  instead and can no longer be interpreted as the amplitude of the activation. One possibility to recover the trial-by-trial response amplitude is to select the parameters from a single time point as done by some of the models considered in (Mumford et al.,

2012), however this procedure assumes that the peak BOLD response is located at that time point. Another possibility is to construct the estimated HRF and take as amplitude coefficient the peak amplitude of this estimated HRF. This is the approach that we have used in this paper.

## 2.2. GLM with rank constraint

In the basis-constrained GLM model, the HRF estimation is performed independently for each condition. This method works reliably whenever the number of conditions is small, but in experimental designs with a large number of conditions it breaks down due to the increasing variance and potential underdeterminedness of the estimates.

At a given voxel, it is expected that for similar stimuli the estimated HRF are also similar (Henson et al., 2002). Hence, a natural idea is to promote a common HRF across the different stimuli, which should result in more robust estimates (Makni et al., 2008; Vincent et al., 2010). In this work we consider a model in which a common HRF is shared across the different stimuli. Besides the estimation of the HRF, a unique coefficient is obtained per column of our event matrix. This amounts to the estimation of  $k + d$  free parameters as opposed to  $k \times d$  in the standard basis-constrained GLM setting.

The novelty of our method stems from the observation that the formulation of the GLM model with a common HRF across conditions translates to a rank constraint on the vector of estimates. This assumption amounts to enforcing the vector of estimates to be of the form  $\beta_B = [h\beta_1 \ h\beta_2 \ \dots \ h\beta_k]$ . More compactly, this can be written as  $\beta_B = \text{vec}(h\beta^T)$ , for some HRF  $h$  and a vector of coefficients  $\beta$ . This can be seen as a constraint on the coefficients that are the vectorization of a rank-one matrix, hence the name *Rank-1 GLM (R1-GLM)*.

In this model, the coefficients are no longer a closed form expressions of the data, but can be estimated by minimizing the bilinear mean squared error of the residuals. The optimization problem reads:

$$\begin{aligned} \hat{\beta}, \hat{h} = \arg \min_{\beta, h} \frac{1}{2} \|y - X_B \text{vec}(h\beta^T)\|^2 \\ \text{subject to } \|Bh\|_\infty = 1 \text{ and } \langle Bh, h_{\text{ref}} \rangle > 0 \end{aligned} \quad (1)$$

where as previously  $B$  is a set of basis functions  $B = [b_1, \dots, b_d]$ . The norm constraint is added to avoid the scale ambiguity between  $h$  and  $\beta$  and the sign is chosen so that the estimated HRF correlates positively with a given reference HRF  $h_{\text{ref}}$ . Otherwise the signs of the HRF and  $\beta$  can be simultaneously flipped without changing the value of the cost function. The optimization problem, ignoring the constraints, is *smooth* and is convex with respect to  $h$  or  $\beta$ , however it is not *jointly convex* in both variables  $h$  and  $\beta$ .

From a practical point of view this formulation has a number of advantages. First, in contrast with the GLM without rank-1 constraint the estimated coefficients are already factored into the estimated HRF and the activation coefficients. That is, once the estimation of the model parameters from Eq. (1) is done,  $\hat{\beta}$  is a vector of size  $k$  and  $\hat{h}$  is a vector of size  $d$  that can be both used in subsequent analysis, while in

models without rank-1 constraint only the vector of coefficients (equivalent to  $\text{vec}(h\beta^T)$  in rank-1 constrained models) of size  $k \times d$  is estimated. In the latter case, the estimated HRF and the beta-maps still have to be extracted from this vector by methods such as normalization by the peak of the HRF, averaging or projecting to the set of Rank-1 matrices.

Second, it is readily adapted to prediction on unseen trials. While for classical (non rank-1 models) the HRF estimation is performed per condition and there is no HRF associated with unseen conditions, in this setting, because the estimated HRF is linked and equal across conditions it is natural to use this estimate on unseen conditions. This setting occurs often in encoding models where prediction on unseen trials is part of the cross-validation procedure.

This model can also be extended to use a parametric model of the HRF. That is, given the hemodynamic response defined as a function  $f$  of some parameters  $\alpha$ , we can formulate the analogous model of Eq. (1) as an optimization over the parameters  $\alpha$  and  $\beta$  with the design matrix  $X_{\text{FIR}}$  given by the convolution of the event matrix with the FIR basis:

$$\hat{\beta}, \hat{\alpha} = \arg \min_{h, \alpha} \frac{1}{2} \|y - X_{\text{FIR}} \text{vec}(f(\alpha)\beta^T)\|^2 \quad (2)$$

subject to  $\|f(\alpha)\|_{\infty} = 1$  and  $\langle f(\alpha), h_{\text{ref}} \rangle > 0$

In section 2.4 we will discuss optimization strategies for both models.

### 2.3. Extension to separate designs

An extension to the classical GLM that improves the estimation with correlated designs was proposed in (Mumford et al., 2012). In this setting, each voxel is modeled as a linear combination of two regressors in a design matrix  $X_{\text{GLM}}$ . The first one is the regressor associated with a given condition and the second one is the sum of all other regressors. This results in  $d$  design matrices, one for each condition. The estimate for a given condition is given by the first element in the two-dimensional array  $X_{S_i}^{\dagger}y$ , where  $X_{S_i}$  is the design matrix for condition  $i$ . We will denote this model GLM with separate designs (GLMS). It has been reported to find a better estimate in rapid event designs leading to a boost in accuracy for decoding tasks (Mumford et al., 2012; Schoenmakers et al., 2013; Lei et al., 2013).

This approach was further extended in (Turner et al., 2012) to include FIR basis instead of the predefined canonical function. Here we employ it in the more general setting of a predefined basis set. Given the set  $B$  of basis functions we construct the design matrix for condition  $i$  as the columnwise concatenation of two matrices  $X_{\text{BS}i}^0$  and  $X_{\text{BS}i}^1$ .  $X_{\text{BS}i}^0$  is given by the columns associated with the current condition in the GLM matrix and  $X_{\text{BS}i}^1$  is the sum of all other columns. In this case, the vector of estimates is given by the first  $d$  vectors of  $X_{\text{BS}i}^{\dagger}y$ .

It is possible to use the same rank-1 constraint as before in the setting of separate designs, linking the HRF across conditions. In this case we can compute the vector of estimates  $\hat{\beta}$  as the solution to the

optimization problem

$$\hat{\beta}, \hat{w}, \hat{h} = \arg \min_{\beta, w, h} \frac{1}{2} \sum_i^k \|y - \beta_i X_{\text{BS}i}^0 h - w_i X_{\text{BS}i}^1 h\|^2 \quad (3)$$

subject to  $\|Bh\|_\infty = 1$  and  $\langle Bh, h_{\text{ref}} \rangle > 0$

where  $w$  is a vector representing the activation of all other events that will not be used in subsequent analyses.

#### 2.4. Optimization

One approach to minimize (1) is to alternate the minimization with respect to the variables  $h$  and  $\beta$ . By recalling the Kronecker product identities (Horn and Johnson, 1991, Chapter 4.3), and using the identity  $\text{vec}(h\beta^T) = \beta \otimes h$  we can rewrite the objective function (1) to be minimized as:

$$\frac{1}{2} \|y - X_B(\beta \otimes h)\|^2 = \frac{1}{2} \|y - X_B(I \otimes h)\beta\|^2 = \frac{1}{2} \|y - X_B(\beta \otimes I)h\|^2 . \quad (4)$$

Updating  $h$  or  $\beta$  sequentially thus amounts to solving a (constrained) least squares problem. However, this approach requires computing the matrices  $X_B(\beta \otimes I)$  and  $X_B(I \otimes h)$ , which are typically dense, resulting in a high computational cost at each iteration. Note that the optimization problem is not jointly convex in variables  $h$  and  $\beta$ . Therefore we cannot apply convergence guarantees from convex analysis. Often this problem is approached using alternating separate (and convex) optimization of  $h$  and  $\beta$ , but this is unnecessarily costly.

We rather propose a more efficient approach by optimizing both variables jointly. We define a global variable as the concatenation of  $\beta$  and  $h$  and cast the problem as an optimization with respect to this new variable. Generic solvers for unconstrained numerical optimization (Nocedal and Wright, 2006) can then be used. These solvers take as input the objective function (1) and the gradient  $\nabla = \text{vec}([\nabla_h, \nabla_\beta])$ , which can be easily derived using the aforementioned Kronecker product identities:

$$\begin{cases} \nabla_h = -(\beta^T \otimes I)X^T(y - X \text{vec}(h\beta^T)) \\ \nabla_\beta = -(I \otimes h^T)X^T(y - X \text{vec}(h\beta^T)) \end{cases}$$

For the sake of efficiency, it is essential to avoid evaluating the Kronecker products naively, but reformulate using the above mentioned Kronecker identities. This results in point by point vector multiplications that are swiftly computed.

If a parametric model of the HRF is used, these equations still hold replacing  $h = f(\alpha)$  and left-multiplying  $\nabla_h$  by the jacobian of  $f$ . Similar equations can be derived for the case of separate designs, in



which case the gradient reads:

$$\begin{cases} \nabla_h = \sum_i^k -(X_{\text{BS}_i}^0 \beta_i - X_{\text{BS}_i}^1 w_i)^T (y - \beta_i X_{\text{BS}_i}^0 h - w_i X_{\text{BS}_i}^1 h) \\ \nabla_{\beta_i} = (X_{\text{BS}_i}^0 h)^T (y - \beta_i X_{\text{BS}_i}^0 h - w_i X_{\text{BS}_i}^1 h) \\ \nabla_{w_i} = (X_{\text{BS}_i}^1 h)^T (y - \beta_i X_{\text{BS}_i}^0 h - w_i X_{\text{BS}_i}^1 h) \end{cases}$$

A good initialization strategy plays a crucial role in any iterative algorithm. In this case, because of its similarities with the GLM with separate designs we use it to initialize our Rank-1 regression model. This significantly reduces computation time whenever an important number of voxels is considered.

Whenever the design matrix  $X_B$  has more rows than columns (as is the case in both datasets we consider with  $B$  the 3HRF basis), it is possible to find an orthogonal transformation that significantly speeds up the computation of the Rank-1 model. Let  $Q, R$  be the “thin” QR decomposition of  $X_B \in \mathbb{R}^{n \times dk}$ , that is,  $QR = X_B$  with  $Q \in \mathbb{R}^{n \times dk}$  orthogonal and  $R \in \mathbb{R}^{dk \times dk}$  triangular matrices. Because of the invariance of the Euclidean norm to orthogonal transformations, the change of variable  $X_B \leftarrow Q^T X_B, y \leftarrow Q^T y$  yields a Rank-1 model in Eq. (1) with equivalent solutions. Computation after this change of variable can be significantly faster because of the reduced size of the design matrix and the explained variable. More precisely, the design matrix is now a square triangular matrix of size  $nk \times nk$  and the explained variable  $y$  is of size  $kd$ . Using this transformation we have observed that the total running time of the algorithm could be reduced by 30%.

Some numerical solvers such as L-BFGS-B (Liu and Nocedal, 1989) require the constraints to be given as box constraints. While our original problem includes an equality constraint we can easily adapt it to use convex box constraints instead. We replace the equality constraint  $\|Bh\|_\infty = 1$  by the convex inequality constraint  $\|Bh\|_\infty \leq 1$ , which is equivalent to the box constraint  $-1 \leq (Bh)_i \leq 1$  supported by the above solver. However, this change of constraint allows solutions in which  $h$  can be arbitrarily close to zero. To avoid such degenerate cases we add the smooth term  $-\|Bh\|_2^2$  to the cost function. Since there is a free scale parameter between  $h$  and  $\beta$ , this does not bias the problem, but forces  $Bh$  to lie as far as possible from the origin (thus saturating the box constraints). Once a descent direction has been found by the L-BFGS-B method we perform a line search procedure to determine the step length. The line-search procedure was implemented to satisfy the strong Wolfe conditions (Nocedal and Wright, 2006). Finally, when the optimization algorithm has converged to a stationary point, we rescale the solution setting  $\hat{h}$  to  $h/\|Bh\|_\infty$  and  $\hat{\beta}$  to  $\beta\|Bh\|_\infty$  to ensure that the equality constraint is verified.

We have compared several first-order (Conjugate Gradient), quasi-Newton (L-BFGS) and Newton methods on this problems and found that in general quasi-Newton methods performed best in terms of computation time. In our implementation, we adopt the L-BFGS-B as the default solver. The full algorithm can be stated as follows:

The full estimation of the R1-GLM model with 3HRF basis for one subject of the dataset described in

---

**Algorithm 1** Rank1 model optimization

---

**Input:** Given initial points  $\beta_0, h_0$ , convergence tolerance  $\epsilon > 0$ , inverse Hessian approximation  $H_0$

**Output:**  $\beta_k, h_k$

- 1: (Optional): Compute  $QR = X_B$  and replace  $X_B \leftarrow Q^T X_B, y \leftarrow Q^T y$
  - 2:  $k \leftarrow 0$
  - 3: **while**  $\|\nabla f\| > \epsilon$  **do**
  - 4:   Compute search direction  $p_k \leftarrow -H_k \nabla f(h_k, \beta_k)$  by means of the L-BFGS algorithm.
  - 5:   Set  $h_{k+1} = h_k + \alpha_k h_k$  and  $\beta_{k+1} = \beta_k + \alpha_k \beta_k$  where  $\alpha_k$  is computed from a line search procedure subject to the box constraints  $\|h_k\|_\infty \leq 1$
  - 6:   Normalize and set sign so that the estimated HRF is positively correlated with the canonical HRF:  
     $q_k \leftarrow \|h_k\|_\infty \text{sign}(h_k^T h_c), h_k \leftarrow h_k / q_k, \beta_k \leftarrow \beta_k q_k$
  - 7:    $k \leftarrow k + 1$
  - 8: **end while**
- 

section *Dataset 2: decoding of potential gain levels* (16 \* 3 conditions, 720 time points, 41622 voxels) took 7 minutes in a 8-cores Intel Xeon 2.67GHz machine. The total running time for the 17 subjects was less than two hours, which is competitive compared to classical implementations.

### 2.5. Software

We provide a software implementation of all the models discussed in this section in the freely available (BSD licensed) pure-Python package `hrf_estimation`<sup>5</sup>.

## 3. Data description

With the aim of making the results in this paper easily reproducible, we have chosen two freely available datasets to validate our approach and to compare different HRF modeling techniques.

### 3.1. Dataset 1: encoding of visual information

The first dataset we will consider is described in (Kay et al., 2008; Naselaris et al., 2009). It contains BOLD fMRI responses in human subjects viewing natural images. As in (Kay et al., 2008), we performed prediction of BOLD signal following the visual presentation of natural images and compared it against the measured fMRI BOLD signal. As the procedure consists of predicting the fMRI data from stimuli descriptors, it is an *encoding* model. This dataset is publicly available from <http://crcns.org>

---

<sup>5</sup>[https://pypi.python.org/pypi/hrf\\_estimation](https://pypi.python.org/pypi/hrf_estimation)

Two subjects viewed 1750 training images, each presented twice, and 120 validation images, each presented 10 times, while fixating a central cross. Images were flashed 3 times per second (200 ms on-off-on-off-on) for one second every 4 seconds, leading to a rapid event-related design. The data was acquired in 5 scanner sessions, each comprising 5 blocks (runs) of 70 training images –each image being presented twice within the block– and 2 blocks of validation images showing 12 images, 10 times each. The images were recorded from the occipital cortex at a spatial resolution of  $2\text{mm}\times 2\text{mm}\times 2.5\text{mm}$  and a temporal resolution of 1 second.

We performed local detrending using a Savitzky-Golay filter (Savitzky and Golay, 1964) with a polynomial of degree 4 and a window length of 91 TR. The activation coefficients (beta-map) and HRF were extracted from the training set by means of the different methods we would like to compare. The training set consisted of 80% of the original session (4 out of 5 blocks). This resulted in estimated coefficients (beta-map) for each of the  $70 \times 4$  images in the training set.

We proceed to train the encoding model. The stimuli are handled as local image contrasts, that are represented by spatially smoothed Gabor pyramid transform modulus with 2 orientations and 4 scales. Ridge regression (regularization parameter chosen by Generalized Cross-Validation (Golub et al., 1979)) was then used to learn a predictor of voxel activity on the training set. By using this encoding model and the estimated HRF it is possible to predict the BOLD signal for the 70 images in the test set (20 % of the original session). We emphasize that learning the HRF on the training set instead of on the full dataset is necessary to avoid overfitting while assessing the quality of the estimated HRF by any HRF-learning method: as otherwise the estimation of the HRF may incorporate specificities of the test set leading to artificially higher scores.

Prediction of BOLD signal on the test set is performed from conditions that were not present in the test set. As highlighted in the methods section, the construction of an HRF for these conditions is ambiguous for non Rank-1 methods that perform HRF estimation on the different stimuli. In these cases we chose to use the mean HRF across conditions as the HRF for unseen conditions. Finally, linear predictions on the left out fold were compared to the measured BOLD signals. As encoding score we report the Pearson correlation coefficient between the predicted time-series and the measurements.

Finally, we perform the image identification task from (Kay et al., 2008). We use the previously estimated HRF to compute the activation maps from both the training and validation set. We use an encoding model using Gabor filters that predicts the activation coefficient from the training stimuli. From the stimuli in the validation set we predict the activation coefficients that we then use to identify the correct image. The predicted image is the one yielding the highest correlation with the measured activity. This procedure mimics the one presented in (Kay et al., 2008, Supplementary material).

### 3.2. Dataset 2: decoding of potential gain levels

The second dataset described in (Tom et al., 2007) is a gambling task where each of the 17 subjects was asked to accept or reject gambles that offered a 50/50 chance of gaining or losing money. The magnitude of the potential gain and loss was independently varied across 16 levels between trials. Each gamble has an amount of potential gains and potential losses that can be used as class label. In this experiment, we only considered gain levels. This leads to the challenge of predicting or *decoding* the gain level from brain images. The dataset is publicly available from <http://openfmri.org> under the name *mixed-gambles task* dataset.

The data preprocessing included slice timing, motion correction, coregistration to anatomical image, tissue segmentation, normalization to MNI space and was performed using the SPM 8 software through the Pyprocess<sup>6</sup> interface.

For all subjects three runs were recorded, each consisting of 240 images with a repetition time (TR) of 2 seconds and a stimulus presentation at every 4 seconds. In order to perform HRF estimation on more data than what is available on a single run, we performed the estimation on the three runs simultaneously. This assumes HRF consistency across runs, which was obtained by concatenating the data from the three runs and creating a block-diagonal design matrix correspondingly (each block is the design of one run).

After training the model on 90% of the data, we predict the gain level on the remaining 10%. As a performance measure we use Kendall tau rank correlation coefficient (Kendall, 1938) between the true gain levels and the predicted levels, which is a measure for the orderings of the data. We argue that this evaluation metric is better suited than a regression loss for this task because of the discrete and ordered nature of the labels. Also, this loss is immune to shrinkage of the prediction that might occur when penalizing a regression model. The Kendall tau coefficient always lies within the interval  $[-1, 1]$ , with 1 being perfect agreement between the two rankings and  $-1$  perfect disagreement. Chance level lies at zero. This metric was previously proposed for fMRI decoding with ordered labels in (Doyle et al., 2013).

## 4. Results

In order to compare the different methods discussed previously, we ran the same encoding and decoding studies while varying the estimation method for the activation coefficients (beta-maps). The methods we considered are standard GLM (denoted GLM), GLM with separate designs (GLMS), Rank-1 GLM (R1-GLM) and Rank-1 GLM with separate designs (R1-GLMS). For all these models we consider different basis sets for estimating the HRF: a set of three elements formed by the reference HRF and its time and dispersion derivative, a FIR basis set (of size 20 in the encoding study and 10 in the decoding study) formed by the canonical vectors and the single basis set formed by the reference HRF (denoted “fixed HRF”), which in this case is the HRF used by the SPM 8 software.

---

<sup>6</sup><https://github.com/neurospin/pyprocess>

It should be reminded that the focus of this study is not the study of the HRF in itself (such as variability across subjects, tasks or regions) but instead its possible impact on the accuracy of encoding and decoding paradigms. For this reason we report encoding and decoding scores but we do not investigate any of the possible HRF variability factors.

#### 4.1. Dataset 1: encoding of visual information

The mean encoding score was computed over 500 voxels. In the original study, 500 voxels were also used to perform image identification. These voxels were selected as the voxels with the highest encoding score using a GLM with the reference HRF. These voxels are therefore not the ones naturally benefiting the most from HRF estimation. The score was computed by averaging the leave-one-session-out crossvalidation scores for all five sessions. In Figure 1 we show the scores corresponding to the different methods together with the standard error across sessions.

From the mean score across selected voxels we obtain a quantification of the overall performance of the different methods. We will examine the paired difference of both scores across voxels. This is computed with a bootstrap procedure on the Wilcoxon statistic. This way, irrespective of the variance across voxels, which is inherent to the study, we can reliably assess the relative ranking of our models. Due to the variance of scores across voxels, we also report p-values instead of error bars, together with the mean score in Figure 1.

We observed in Figure 1 that methods that learn the HRF together with some sort of regularization (be it Rank-1 constraint or induced by separate designs) perform noticeably better than methods that perform unconstrained HRF estimation, highlighting the importance of a robust estimation of the HRF and not just a free estimation as performed by the standard GLM model with FIR basis. This suggests that R1 and GLMS methods permit to include FIR basis sets while minimizing the risk of overfitting present in the classical GLM model.

We also observed that models using the GLM with separate designs from (Mumford et al., 2012) perform significantly better on this dataset than the standard design, which is consistent with the purpose of these models. It improves estimation in highly correlated designs. The best performing model for both subjects is the R1-GLMS with FIR basis, followed by the R1-GLM with FIR basis model for subject 1 and GLMS with FIR basis for subject 2. The difference between both models (bootstrap on the Wilcoxon signed-rank test) was significant with a p-value  $< 10^{-6}$ . Since the results for both subjects are similar, we will only use subject 1 for the rest of the figures.

The scores obtained in the image identification task can be seen in Figure 3. The displayed score is the count of correctly identified images over the total number of images (chance level is 1/120). The identification algorithm here only uses the beta-maps obtained from the train and validation set. The estimation of the HRF is thus only an intermediate result in this model. However, we expect that a correct estimation of the HRF directly translates into a better estimation of the activation coefficients and thus to a better

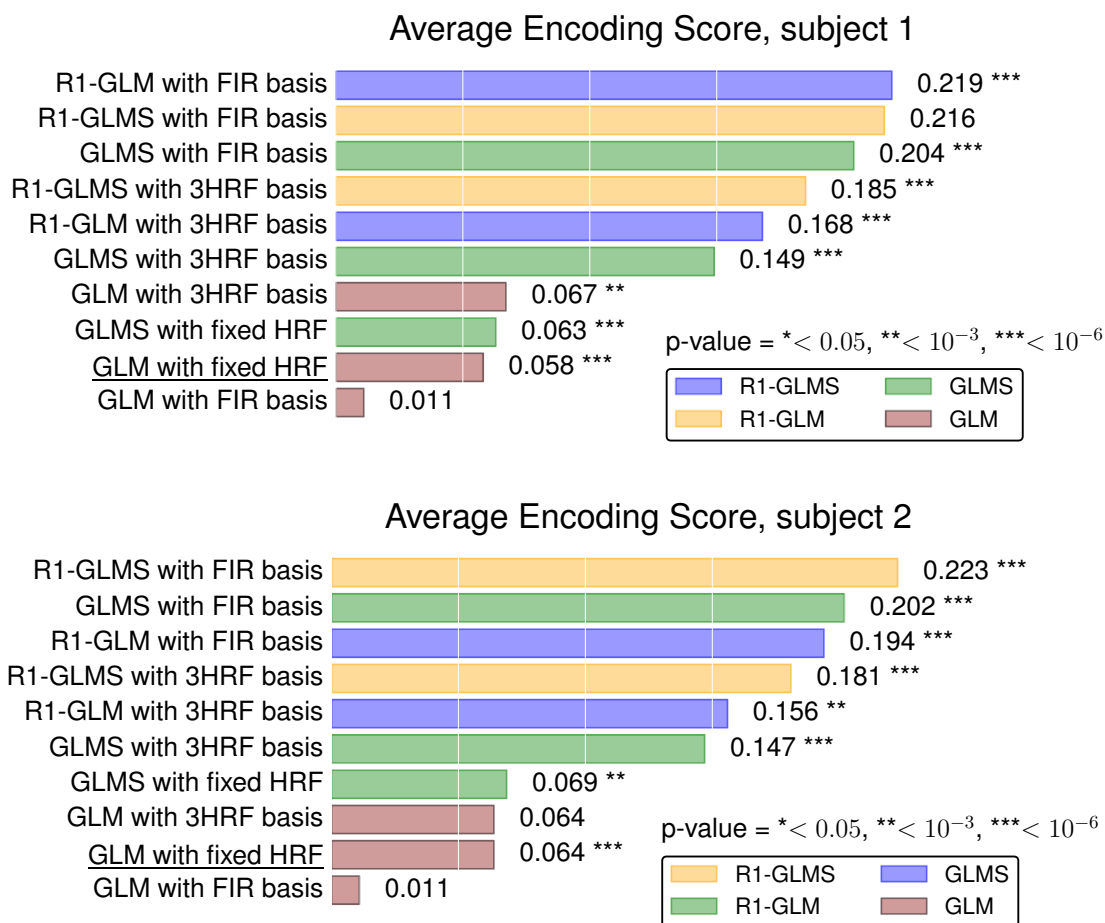


Figure 1: Averaged voxel-wise encoding score for the different methods considered (higher is better) on two different subjects. The metric is Pearson correlation. Methods that perform constrained HRF estimation significantly outperform methods that use a fixed reference HRF. In particular, the best performing method is in both subjects the R1-GLMS with FIR basis, followed by the R1-GLM with FIR basis for subject 1 and GLMS with FIR basis for subject 2. In underlined typography is the GLM with a fixed HRF which is the method used by default in most software distributions. A Wilcoxon signed-rank test is performed between each method and the next one in the ordered result list. We report p-values to assess whether the score differences are statistically significant.

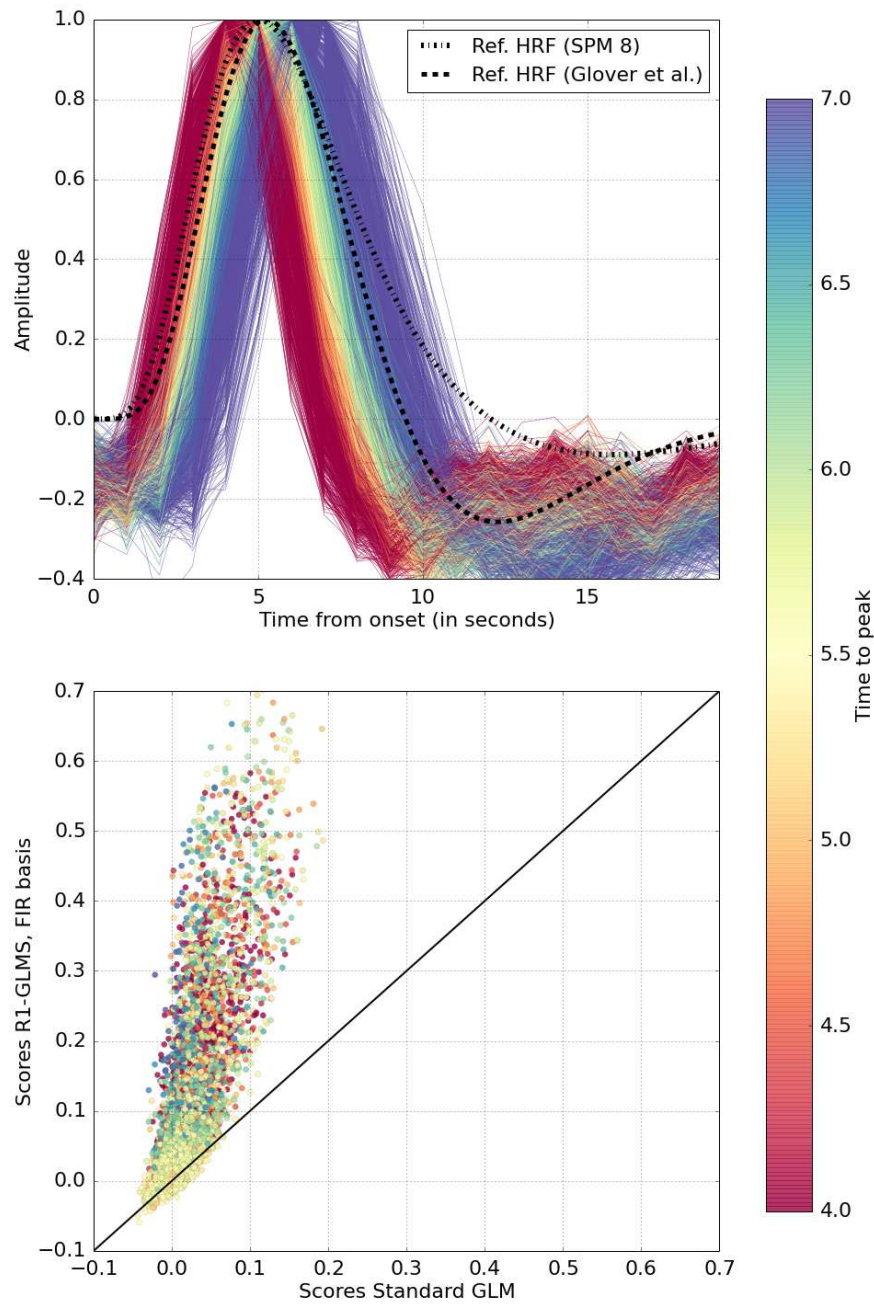


Figure 2: Top: HRF estimated by the R1-GLMS method on voxels for which the encoding score was above the mean encoding score, color coded according to the time to peak of the estimated HRFs. The difference in the estimated HRFs suggests a substantial variability at the voxel level within a single subject and a single task. Bottom: voxel-wise encoding score for the best performing method (R1-GLMS with FIR basis) versus a standard GLM (GLM with fixed HRF) across voxels. The metric is Pearson correlation. Points above the black diagonal correspond to voxels that exhibit a higher score with the R1-GLMS method than with a standard GLM.

identification performance. Our results are consistent with this hypothesis and in this task the rank-one (R1) and glm-separate (GLMS) models outperform the classical GLM model. As before, the FIR basis has a higher score than the 3HRF basis. The increase in performance is more moderate in this metric than in the voxel-wise score using a correlation metric. This is expected since the voxel-wise metric is highly sensitive to the shape of the HRF.

To further inspect the results, we investigated the estimation and encoding scores at the voxel level. This provides some valuable information. For example, parameters such as time-to-peak, width and undershoot of the estimated HRF can be used to characterize the mis-modelling of a reference HRF for the current study. Also, a voxel-wise comparison of the different methods can be used to identify which voxels exhibit a greater improvement for a given method. In the upper part of Figure 2 we show the HRF estimated on the first subject by our best performing method (the Rank-1 with separate designs and FIR basis). For comparison we also present two commonly used reference HRFs: one used in the software SPM and one defined in (Glover, 1999, auditory study) and used by software such as NiPy<sup>7</sup> and fmristat<sup>8</sup>. Because the HRF estimation will fail on voxels for which there is not enough signal, we only show the estimated HRF for voxels for which the encoding score is above the mean encoding score. In this plot the time-to-peak of the estimated HRF is color coded. One can observe a substantial variability in the time to peak, confirming the existence of a non-negligible variability of the estimated HRFs, even within a single subject and a single task. In particular, we found that only 50% of the estimated HRFs on the full brain volume peaked between 4.5 and 5.5 seconds.

In the lower part of Figure 2 we can see a scatter plot in which the coordinates of each point are the encoding scores with two different methods. The first coordinate (X-axis) is given by the score using a canonical GLM whilst the second coordinate (Y-axis) corresponds to the Rank-1 separate with FIR basis. Points above the black diagonal exhibit a higher score with our method than with a canonical GLM. As previously, the color represents the time to peak of the estimated HRF. From this plot we can see that voxels that have a low correlation score using a canonical GLM do not gain significant improvement by using a Rank-1 Separate FIR model instead. However, voxels that already exhibit a sufficiently high correlation score using a canonical GLM ( $> 0.05$ ) see a significant increase in performance when estimated using our method.

These results suggest as a strategy to limit the computational cost of learning the HRF on an encoding study to perform first a standard GLM (or GLMS) on the full volume and then perform HRF estimation only on the best performing voxels.

The methods that we have considered for HRF estimation can be subdivided according to the design matrices they use (standard or separate) and the basis they use to generate the estimated HRF (3HRF and

---

<sup>7</sup><http://nipy.org>

<sup>8</sup><http://www.math.mcgill.ca/keith/fmristat/>



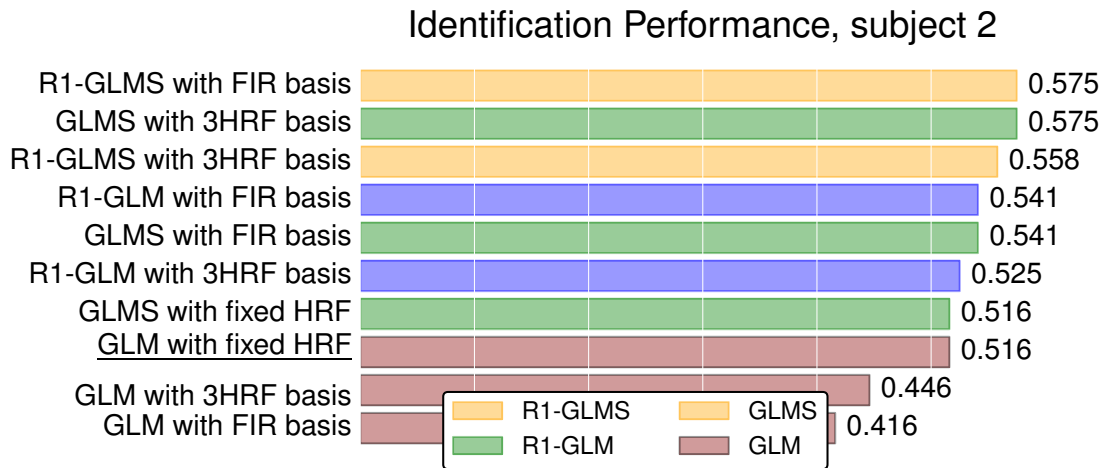
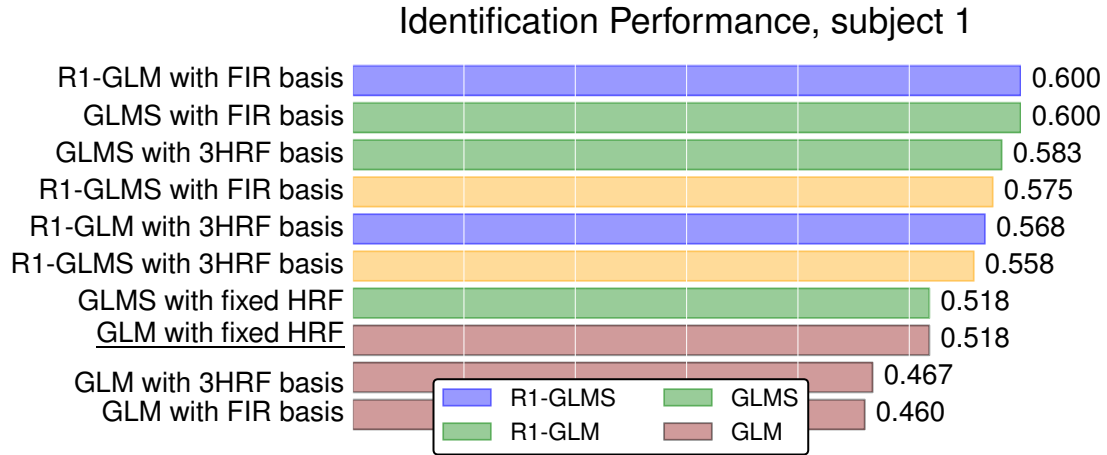


Figure 3: Image identification score for the different methods considered (higher is better) on two different subjects. The metric counts the number of correctly identified images over the total number of images (chance level is  $1/120 \approx 0.008$ ). This metric is less sensitive to the shape of the HRF than the voxel-wise encoding score. However, we achieve an increase of more than 8% in identification score compared to a classical GLM with fixed HRF. R1 and GLMS methods all outperform the classical GLM method. The highest score is achieved by a R1-GLM method with a FIR basis set.

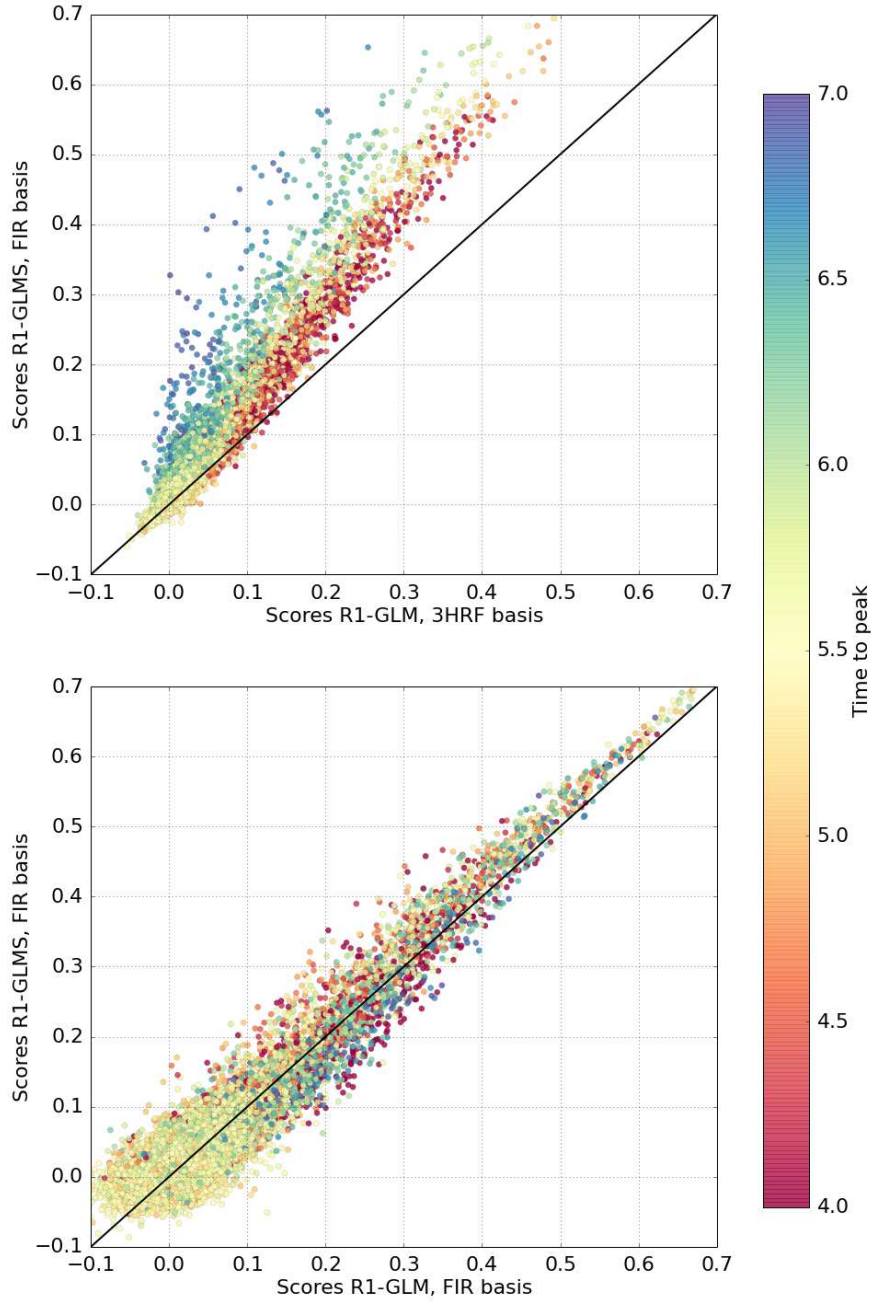


Figure 4: Voxel-wise encoding score for different models that perform HRF estimation. As in figure 2, color codes for the time to peak of the estimated HRF at the given voxel. Top: two Rank-1 separate design models with different basis functions: FIR with 20 elements in the Y-axis and the reference HRF plus its time and dispersion derivatives (3HRF) in the X-axis. The color trend in this plot suggests that the score improvement of the FIR basis respect the 3HRF becomes more pronounced as the time-to-peak of the estimated HRF deviates from the reference HRF (peak at 5s). This can be explained by taking into account that the 3HRF basis is a local model of the HRF around the peak time. Bottom: voxel-wise encoding score for two Rank-1 models with FIR basis and different design matrices: separate design on the Y-axis and classical design on the X-axis. Although both models give similar results, a Wilcoxon signed-rank test confirmed the superiority of the separate designs model in this dataset with a p-value  $< 10^{-3}$ .

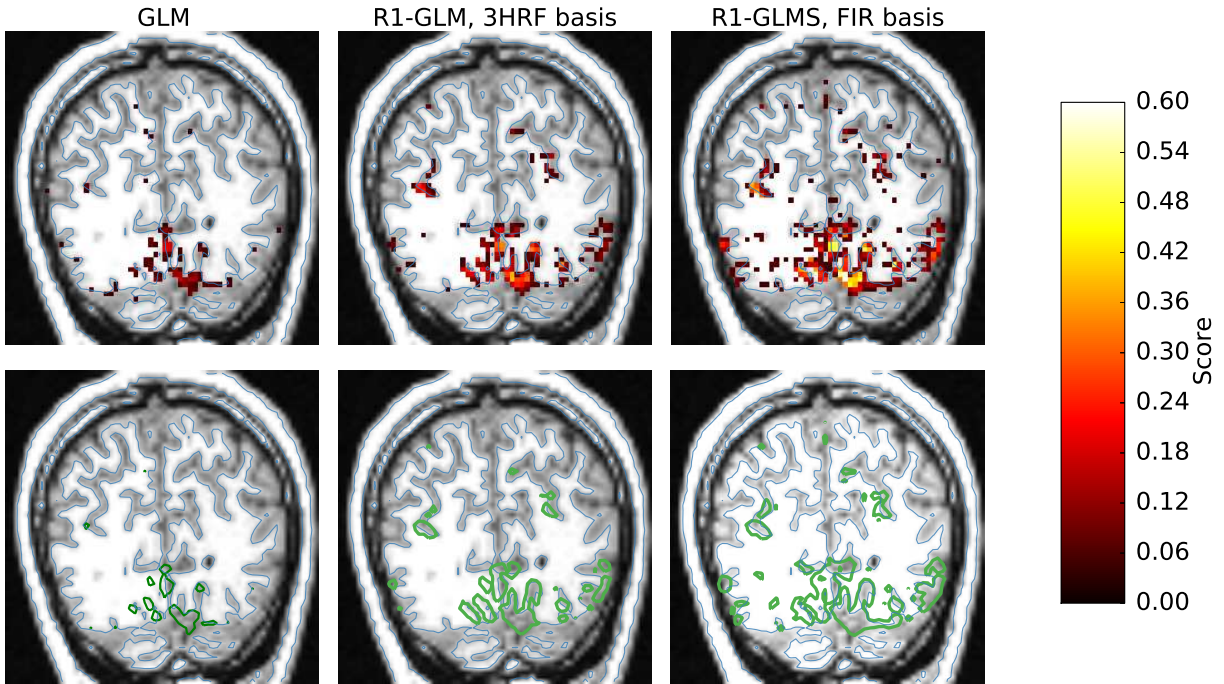


Figure 5: Voxel-wise encoding scores on a single acquisition slice for different estimation methods. The metric is Pearson correlation. In the upper column, the voxel-wise score is thresholded at a value of 0.045 ( $p$ -value  $< 0.05$ ), while in the bottom row the 0.055 contour ( $p$ -value  $< 0.001$ ) for the same data is shown as a green line. Despite lacking proper segmentations of visual areas, the estimation methods produce results that highlight meaningful regions of interest around the calcarine fissure. This is particularly visible in the third column where our method R1-GLMS produces results with higher sensitivity than the standard GLM method. In the bottom row it can be seen how the top performing voxels nicely follow the gray matter.

FIR). We now focus on the performance gains of each of these individual components. In the upper part of Figure 4 we consider the top-performing model, the Rank-1 GLMS, and compare the performance of two different basis sets: FIR with 20 elements in the Y-axis and the reference HRF plus its time and dispersion derivatives (3HRF) in the X-axis. The abundance of points above the diagonal demonstrates the superiority of the FIR basis on this dataset. The color trend in this plot suggests that the score improvement of the FIR basis with respect to the 3HRF basis becomes more pronounced as the time-to-peak of the estimated HRF deviates from the reference HRF (peak at 5s), which can be explained by observing that the the 3HRF basis corresponds to a local model around the time-to-peak. In the bottom part of this figure we compare the different design matrices (standard or separate). Here we can see the voxel-wise encoding score for two Rank-1 models with FIR basis and different design matrices: separate design on the Y-axis and classical design on the X-axis. Although both models give similar results, a Wilcoxon signed-rank test confirmed the superiority of the separate designs model in this dataset with a  $p$ -value  $< 10^{-3}$ .

In Figure 5 we can see the voxel-wise encoding score on a single acquisition slice. In the upper column, the score is plotted on each voxel and thresholded at a value of 0.045, which would correspond to a p-value  $< 0.05$  for testing non-correlation assuming each signal is normally distributed, while in the bottom row the 0.055 contour (p-value  $< 0.001$ ) for the same data is shown as a green line. Here it can be seen how the top performing voxels follow the gray matter. A possible hypothesis to explain the increase of the encoding score between the method R1-GLMS with FIR basis and the same method with 3HRF basis could be related either to the shape of the HRF deviating more from a canonical shape in lateral visual areas or to the higher signal-to-noise ratio often found in the visual cortex when compared to lateral visual areas.

#### 4.2. Dataset 2: decoding of potential gain levels

The mean decoding score was computed over 50 random splitting of the data, with a test set of size 10%. The decoding regression model consisted of univariate feature selection (ANOVA) followed by a Ridge regression classifier as implemented in scikit-learn (Pedregosa et al., 2011). Both parameters, number of voxels and amount of  $\ell_2$  regularization in Ridge regression, were chosen by cross-validation.

The mean score for the 10 models considered can be seen in Figure 6. Similarly to how we assessed superiority of a given method in encoding, we will say that a given method outperforms another if the paired difference of both scores (this time across folds) is significantly greater than zero. This is computed by performing a Wilcoxon signed rank test across voxels. For this reason we report p-values together with the mean score in Figure 6.

As was the case in encoding, Rank-1 constrained methods obtain the highest scores. In this case however, methods with 3HRF basis outperform methods using FIR basis. This can be explained by factors such as smaller sample size of each of the runs, smaller number of trials in the dataset and experimental design.

## 5. Discussion

We have compared different HRF modeling techniques and examined their generalization score on two different datasets: one in which the main task was an *encoding* task and one in which it was a *decoding* task. We compared 10 different methods that share a common formulation within the context of the General Linear Model. This includes models with canonical and separate designs, with and without HRF estimation constrained by a basis set, and with and without rank-1 constraint. We have focused on voxel-independent models of the HRF, possibly constrained by a basis set, and have omitted for efficiency reasons other possible models such as Bayesian models (Marrelec et al., 2003; Ciuciu et al., 2003; Makni et al., 2005) and regularized methods (Goutte et al., 2000; Casanova et al., 2008).

Other models such as spatial models (Vincent et al., 2010), and multi-subject methods (Zhang et al., 2012, 2013) that adaptively learn the HRF across several subjects are outside the scope of this work. The latter models are more relevant in the case of standard group studies and second level analysis.

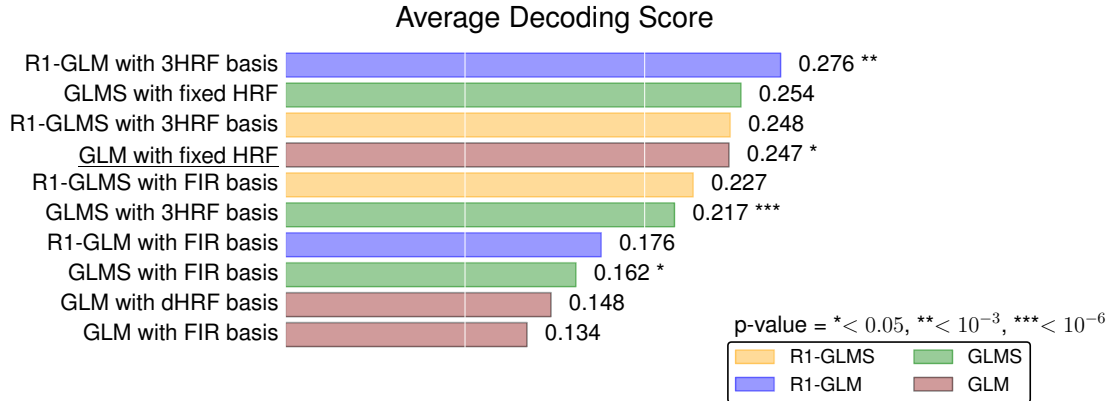


Figure 6: Averaged decoding score for the different method considered (higher is better). The metric is Kendall tau. Methods that perform constrained HRF estimation significantly outperform methods that use a fixed (reference) HRF. In particular, the best performing method is the R1-GLM with 3HRF basis, followed by the R1-GLMS with 3HRF basis. In underlined typography is the GLM with a fixed HRF which is the method used by default in most software distributions. As in Figure 1, a Wilcoxon signed-rank test is performed and the p-value reported between a given method and the next method in the ordered result list to assess whether the difference in score is significant.

Our first dataset consists of an encoding study and revealed that it is possible to boost the encoding score by appropriately modeling the HRF. We used two different metrics to assess the quality of our estimates. The first metric is the Pearson correlation. By considering the voxel-wise score on a full brain volume we observed that the increase in performance obtained by estimating the HRF was not homogeneous across voxels and more important for voxels that already exhibited a good score with a classical design (GLM) and a fixed HRF. The best-performing method is the Rank-1 with separate designs (R1-GLMS) and FIR basis model, providing a significant improvement over the second best-performing model. We have also found substantial variability of the shape in the estimated HRF within a single subject and a single task. The second metric is the image identification score in a similar setting as the one reported in (Kay et al., 2008). We used the previously estimated HRF to compute the activation coefficients on both the training and validation dataset. We then learned a predictive model of the activation coefficients from the stimuli. This was used to identify a novel image from a set of potential images from which the activation coefficients were previously computed. We obtain in this setting an improvement of more than 8% in image identification over the classical GLM with fixed HRF. The best-performing model is the R1-GLM with FIR basis.

The second dataset consists of a decoding task and the results confirmed that constrained (rank-1) estimation of the HRF also increased the decoding score of a classifier. The metric here is Kendall tau. However, in this case the best performing basis was no longer FIR basis consisting of ten elements but the three elements 3HRF basis (HRF plus derivatives) instead, which can be explained by factors such as differences in acquisition parameters, signal-to-noise ratio or by the regions involved in the task.

A higher performance increase was observed in the encoding setup. This higher sensitivity to a correct (or incorrect) estimation of the HRF can be explained by the fact that the estimation of the HRF is used to generate the BOLD signal on the test set. The metric is the correlation between the generated signal and the BOLD signal. It is thus natural to expect that a correct estimation of the HRF has a higher impact on the results. In the decoding setup, activation coefficients (beta-map) are computed but the evaluation metric is the accuracy at predicting the stimulus type. The validation metric used for decoding is less sensitive to the HRF estimation procedure, although it allowed us to observe a significant improvement.

## 6. Conclusion

We have presented a method for the joint estimation of HRF and activation coefficients within the GLM framework. Based on ideas from previous literature (Makni et al., 2008; Vincent et al., 2010) we assume the HRF to be equal across conditions but variable across voxels. Unlike previous work, we cast our model as an optimization problem and propose an efficient algorithm based on quasi-Newton methods. We also extend this approach to the setting of GLM with separate designs.

We quantify the improvement in terms of generalization score in both encoding and decoding settings. Our results show that the rank-1 constrained method (R1-GLM and R1-GLMS) outperforms competing methods in both encoding and decoding settings. A higher increase was observed in the encoding setting, although in both cases the improvement was statistically significant.

**Acknowledgements** This work was supported by grants IRMGrou ANR-10-BLAN-0126-02 and Brain-Pedia ANR-10-JCJC 1408-01. We would like to thank our colleagues Ronald Phlypo and Gael Varoquaux for fruitful discussions.

- Badillo, S., Varoquaux, G., Ciuciu, P., Jun. 2013a. Hemodynamic Estimation Based on Consensus Clustering. 2013 International Workshop on Pattern Recognition in Neuroimaging, 211–215.
- Badillo, S., Vincent, T., Ciuciu, P., Nov. 2013b. Group-level impacts of within- and between-subject hemodynamic variability in fMRI. *NeuroImage* 82, 433–448.
- Boynton, G. M., Engel, S. A., Glover, G. H., Heeger, D. J., 1996. Linear Systems Analysis of Functional Magnetic Resonance Imaging in Human V1 16 (13), 4207–4221.
- Casanova, R., Ryali, S., Serences, J., Yang, L., Kraft, R., Laurienti, P. J., Maldjian, J. a., May 2008. The impact of temporal regularization on estimates of the BOLD hemodynamic response function: a comparative analysis. *NeuroImage* 40 (4), 1606–18.
- Chaari, L., Forbes, F., Vincent, T., Ciuciu, P., Jan. 2012. Hemodynamic-informed parcellation of fMRI data in a joint detection estimation framework. *Medical image computing and computer-assisted intervention : MICCAI ... International Conference on Medical Image Computing and Computer-Assisted Intervention* 15 (Pt 3), 180–8.
- Ciuciu, P., Poline, J.-B., Marrelec, G., Idier, J., Pallier, C., Benali, H., Oct. 2003. Unsupervised robust nonparametric estimation of the hemodynamic response function for any fMRI experiment. *IEEE transactions on Medical Imaging* 22 (10), 1235–51.
- Cox, D. D., Savoy, R. L., Jun. 2003. Functional magnetic resonance imaging (fMRI) brain reading: detecting and classifying distributed patterns of fMRI activity in human visual cortex. *NeuroImage* 19 (2), 261–270.

- Dale, a. M., Jan. 1999. Optimal experimental design for event-related fMRI. *Human brain mapping* 8 (2-3), 109–14.
- Doyle, O. M., Ashburner, J., Zelaya, F. O., Williams, S. C. R., Mehta, M. a., Marquand, a. F., Nov. 2013. Multivariate decoding of brain images using ordinal regression. *NeuroImage* 81, 347–57.
- Friston, K. J., Ashburner, J. T., Kiebel, S. J., Nichols, T. E., Penny, W. D., 2011. *Statistical parametric mapping: The analysis of functional brain images: The analysis of functional brain images*. Academic Press.
- Friston, K. J., Holmes, A. P., Poline, J. P., 1995. *Statistical Parametric Maps in Functional Imaging : A General Linear Approach*.
- Friston, K. J., Josephs, O., Rees, G., Turner, R., 1998. Nonlinear event-related responses in fMRI. *Magnetic Resonance in Medicine* 39 (1), 41–52.
- Glover, G. H., Apr. 1999. Deconvolution of impulse response in event-related BOLD fMRI. *NeuroImage* 9 (4), 416–29.
- Golub, G. H., Heath, M., Wahba, G., 1979. Generalized cross-validation as a method for choosing a good ridge parameter. *Technometrics* 21 (2), 215–223.
- Goutte, C., Nielsen, F. a., Hansen, L. K., Dec. 2000. Modeling the haemodynamic response in fMRI using smooth FIR filters. *IEEE transactions on Medical Imaging* 19 (12), 1188–201.
- Handwerker, D. a., Ollinger, J. M., D’Esposito, M., Apr. 2004. Variation of BOLD hemodynamic responses across subjects and brain regions and their effects on statistical analyses. *NeuroImage* 21 (4), 1639–51.
- Haynes, J.-D., Rees, G., Jul. 2006. Decoding mental states from brain activity in humans. *Nature reviews. Neuroscience* 7 (7), 523–34.
- Henson, R. N. a., Price, C. J., Rugg, M. D., Turner, R., Friston, K. J., Jan. 2002. Detecting latency differences in event-related BOLD responses: application to words versus nonwords and initial versus repeated face presentations. *NeuroImage* 15 (1), 83–97.
- Horn, R. A., Johnson, C. R., 1991. *Topics in matrix analysis*. Cambridge university press.
- Kay, K. N., Naselaris, T., Prenger, R. J., Gallant, J. L., Mar. 2008. Identifying natural images from human brain activity. *Nature* 452 (7185), 352–5.
- Kendall, M. G., 1938. A new measure of rank correlation. *Biometrika* 30 (1/2), 81–93.
- Kriegeskorte, N., Mur, M., Bandettini, P., 2008. Representational similarity analysis—connecting the branches of systems neuroscience. *Frontiers in systems neuroscience* 2.
- Lei, Y., Tong, L., Yan, B., Jan. 2013. A mixed L2 norm regularized HRF estimation method for rapid event-related fMRI experiments. *Computational and mathematical methods in medicine* 2013, 643129.
- Lindquist, M. A., Wager, T. D., 2007. Validity and Power in Hemodynamic Response Modeling: A Comparison Study and a New Approach. *Hum Brain Mapp* 28 (8), 764–784.
- Liu, D. C., Nocedal, J., 1989. On the limited memory BFGS method for large scale optimization. *Mathematical programming* 45 (1-3), 503–528.
- Makni, S., Beckmann, C., Smith, S., Woolrich, M., Oct. 2008. Bayesian deconvolution of fMRI data using bilinear dynamical systems. *NeuroImage* 42 (4), 1381–96.
- Makni, S., Ciuciu, P., Idier, J., Poline, J.-B., Sep. 2005. Joint detection-estimation of brain activity in functional MRI: a Multichannel Deconvolution solution. *IEEE Transactions on Signal Processing* 53 (9), 3488–3502.
- Marrelec, G., Benali, H., Ciuciu, P., Péligrini-Issac, M., Poline, J.-B., 2003. Robust Bayesian estimation of the hemodynamic response function in event-related BOLD fMRI using basic physiological information. *Human Brain Mapping* 19 (1), 1–17.
- Miyawaki, Y., Uchida, H., Yamashita, O., Sato, M.-a., Morito, Y., Tanabe, H. C., Sadato, N., Kamitani, Y., Dec. 2008. Visual image reconstruction from human brain activity using a combination of multiscale local image decoders. *Neuron* 60 (5), 915–29.
- Mourão Miranda, J., Friston, K. J., Brammer, M., May 2007. Dynamic discrimination analysis: a spatial-temporal SVM.

- NeuroImage 36 (1), 88–99.
- Mumford, J. a., Turner, B. O., Ashby, F. G., Poldrack, R. a., Feb. 2012. Deconvolving BOLD activation in event-related designs for multivoxel pattern classification analyses. *NeuroImage* 59 (3), 2636–43.
- Naselaris, T., Kay, K. N., Nishimoto, S., Gallant, J. L., May 2011. Encoding and decoding in fMRI. *NeuroImage* 56 (2), 400–10.
- Naselaris, T., Prenger, R. J., Kay, K. N., Oliver, M., Gallant, J. L., 2009. Bayesian reconstruction of natural images from human brain activity. *Neuron* 63 (6), 902–915.
- Nocedal, J., Wright, S., 2006. Numerical optimization, series in operations research and financial engineering. Springer, New York.
- Pedregosa, F., Eickenberg, M., Thirion, B., Gramfort, A., 2013. HRF estimation improves sensitivity of fMRI encoding and decoding models. *Proceedings of the 3rd International Workshop on Pattern Recognition in NeuroImaging (2013)*, 3–6.
- Pedregosa, F., Grisel, O., Weiss, R., Passos, A., Brucher, M., 2011. Scikit-learn : Machine Learning in Python. *Journal of Machine Learning Research* 12, 2825–2830.
- Poldrack, R. A., Mumford, J. A., Nichols, T. E., 2011. *Handbook of Functional MRI Data Analysis*. Cambridge University Press.
- Poline, J.-B., Brett, M., Aug. 2012. The general linear model and fMRI: does love last forever? *NeuroImage* 62 (2), 871–80.
- Savitzky, A., Golay, M. J., 1964. Smoothing and differentiation of data by simplified least squares procedures. *Analytical chemistry* 36 (8), 1627–1639.
- Schoenmakers, S., Barth, M., Heskes, T., van Gerven, M., Jul. 2013. Linear reconstruction of perceived images from human brain activity. *NeuroImage* 83, 951–961.
- Tom, S. M., Fox, C. R., Trepel, C., Poldrack, R. a., Jan. 2007. The neural basis of loss aversion in decision-making under risk. *Science (New York, N.Y.)* 315 (5811), 515–8.
- Turner, B. O., Mumford, J. a., Poldrack, R. a., Ashby, F. G., Sep. 2012. Spatiotemporal activity estimation for multivoxel pattern analysis with rapid event-related designs. *NeuroImage* 62 (3), 1429–38.
- Vincent, T., Rissler, L., Ciuciu, P., 2010. Spatially adaptive mixture modeling for analysis of fMRI time series. *IEEE Transactions on Medical Imaging* 29 (4), 1059–1074.
- Vu, V. Q., Ravikumar, P., Naselaris, T., Kay, K. N., Gallant, J. L., Yu, B., 2011. Encoding and decoding V1 fMRI responses to natural images with sparse nonparametric models. *The annals of applied statistics* 5 (2B), 1159.
- Wang, J., Zhu, H., Fan, J., Giovanello, K., Lin, W., Jun. 2013. Multiscale adaptive smoothing models for the hemodynamic response function in fMRI. *The Annals of Applied Statistics* 7 (2), 904–935.
- Woolrich, M. W., Behrens, T. E. J., Smith, S. M., Apr. 2004. Constrained linear basis sets for HRF modelling using Variational Bayes. *NeuroImage* 21 (4), 1748–61.
- Zhang, T., Li, F., Beckes, L., Brown, C., Coan, J. a., Nov. 2012. Nonparametric inference of the hemodynamic response using multi-subject fMRI data. *NeuroImage* 63 (3), 1754–65.
- Zhang, T., Li, F., Beckes, L., Coan, J. a., Jul. 2013. A semi-parametric model of the hemodynamic response for multi-subject fMRI data. *NeuroImage* 75, 136–45.