

ADAPTIVE AND WARNING DISPLAYS WITH BRAIN-COMPUTER INTERFACES : ENHANCED VISUOSPATIAL ATTENTION PERFORMANCE

Romain Trachel^{a,b}, Thomas Brochier^a and Maureen Clerc^b

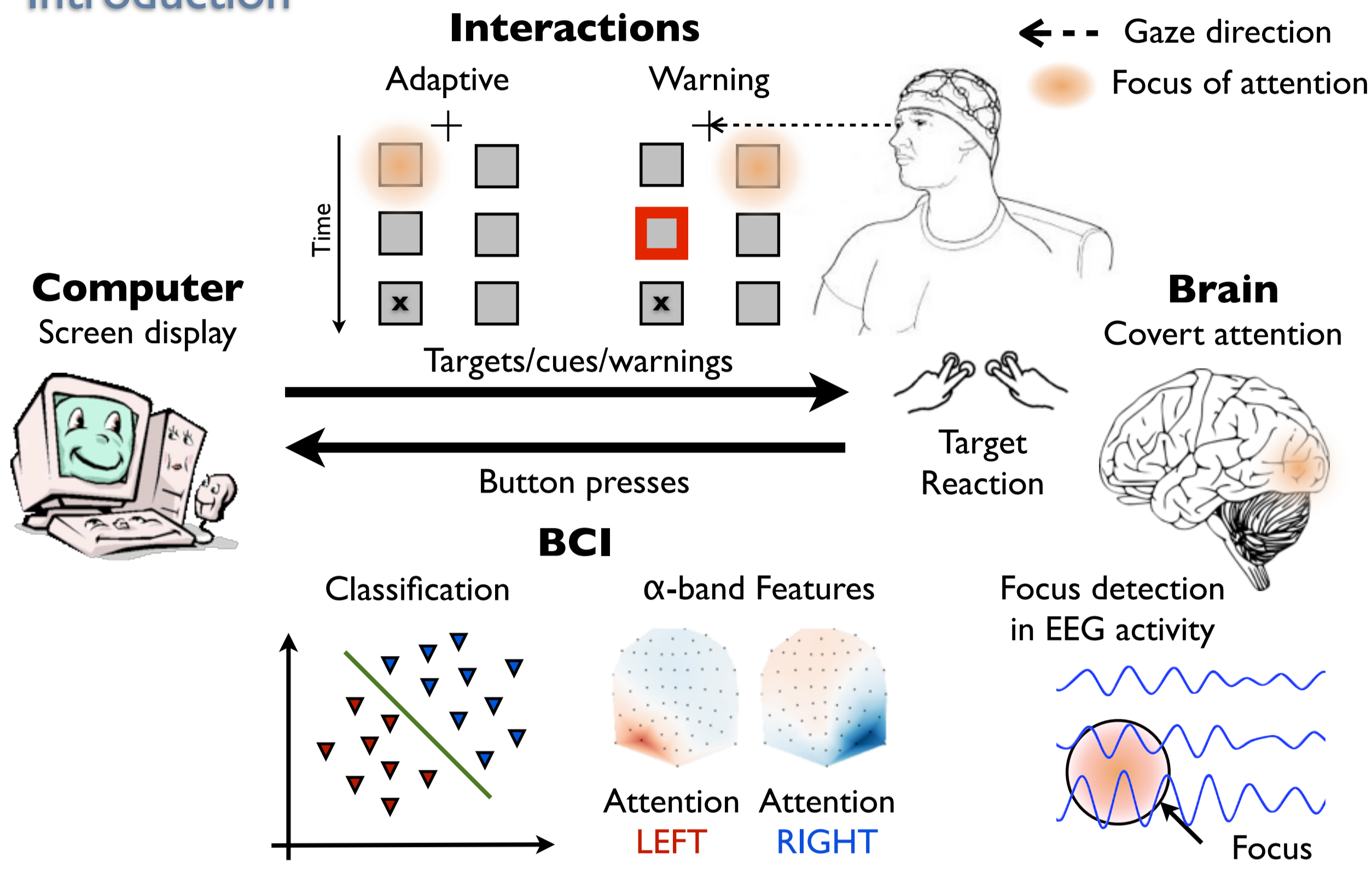
^a Aix-Marseille Université, INT - CNRS UMR 7289, Marseille, France.

^b Athena Project-Team, INRIA Sophia Antipolis - Méditerranée, Sophia Antipolis, France.

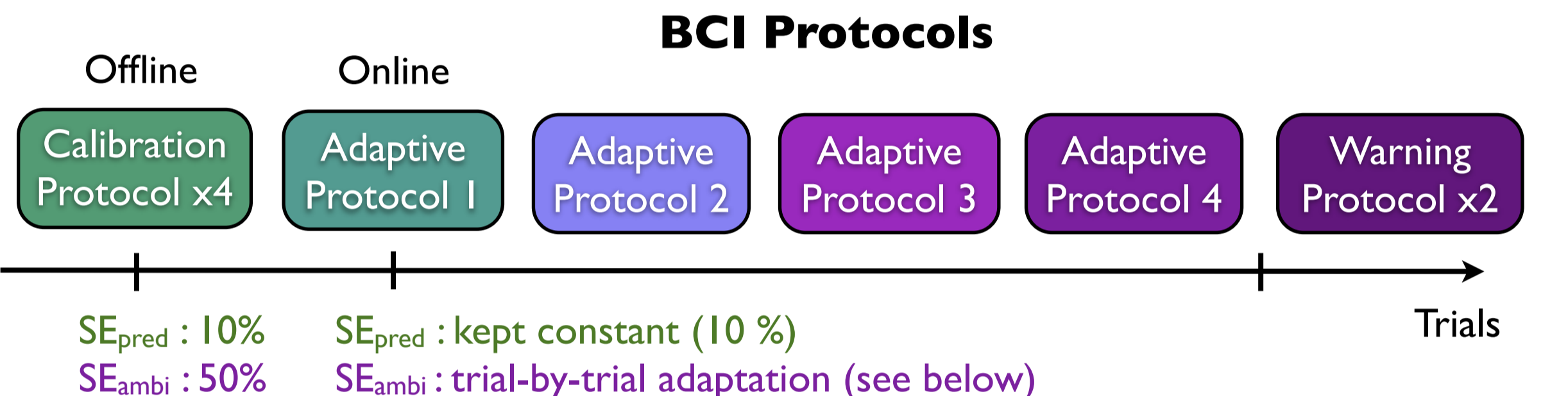
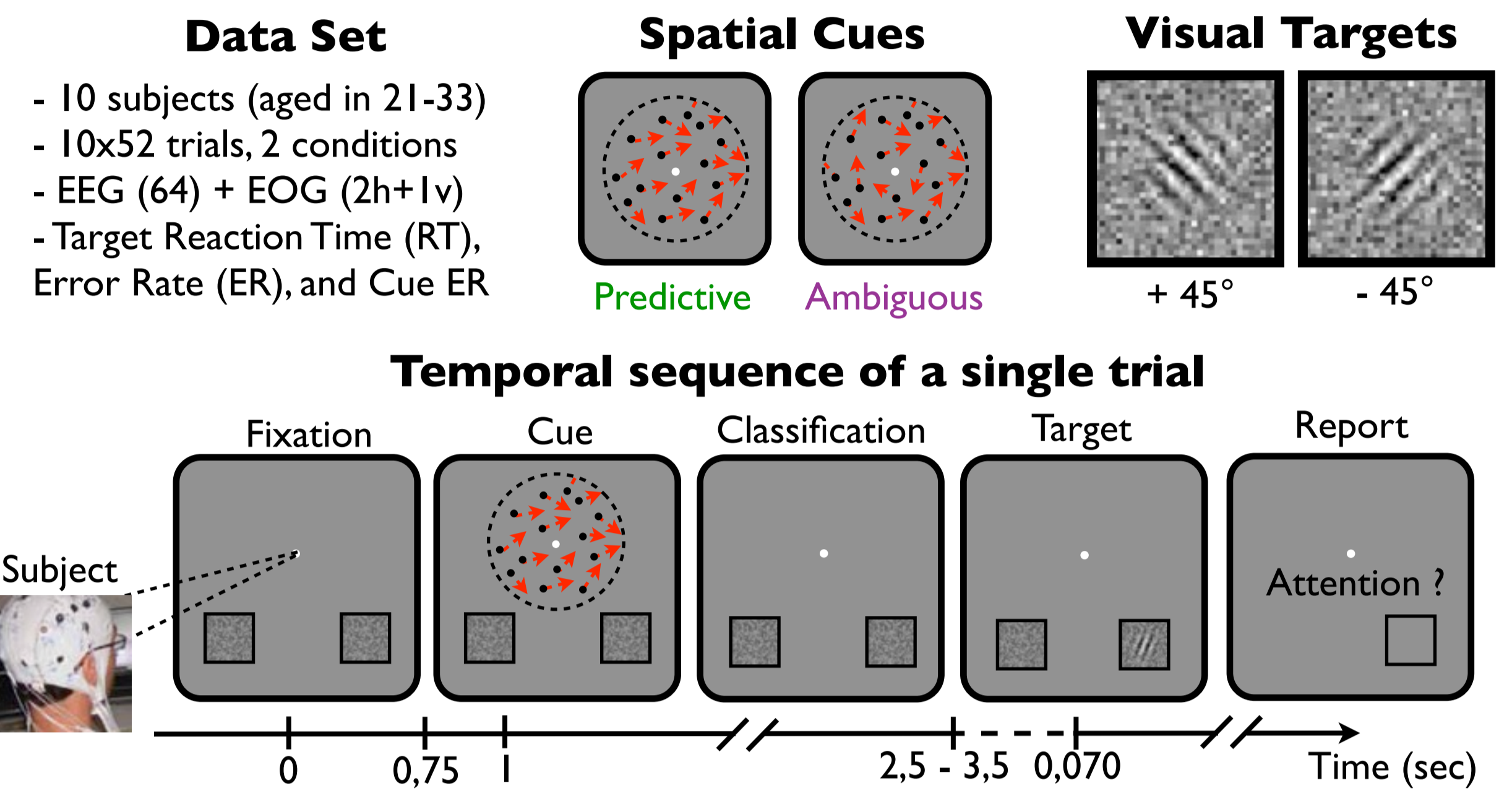


This study presents Brain-Computer Interface (BCI) protocols for enhancing human performance in a visuospatial attention task with complex cues. We designed new BCIs for warning the subject and adapting visual targets based on EEG α -band (8-14Hz) power features to detect the focus of covert attention. Results show a reduction of spatial errors in cue identification, enhanced response speed and accuracy in reaction to visual target with BCI-based display protocols. This work could provide innovative solutions for adaptive human-computer interactions in risk critical command and control tasks.

Introduction

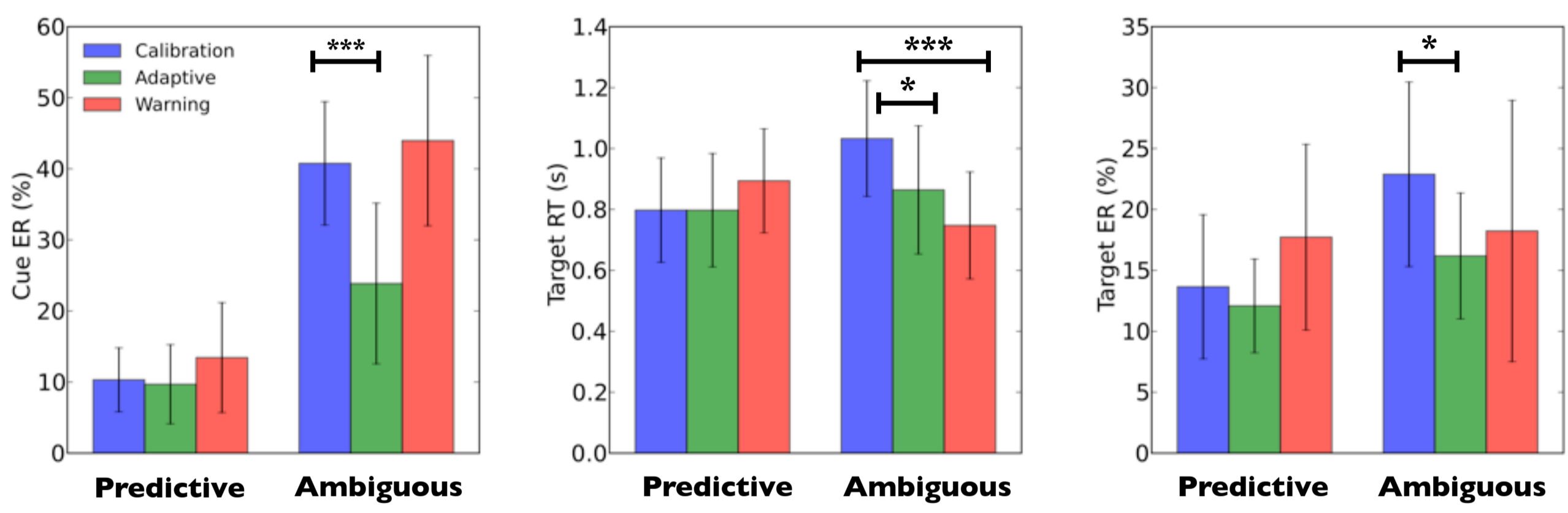


Experiment and Methods

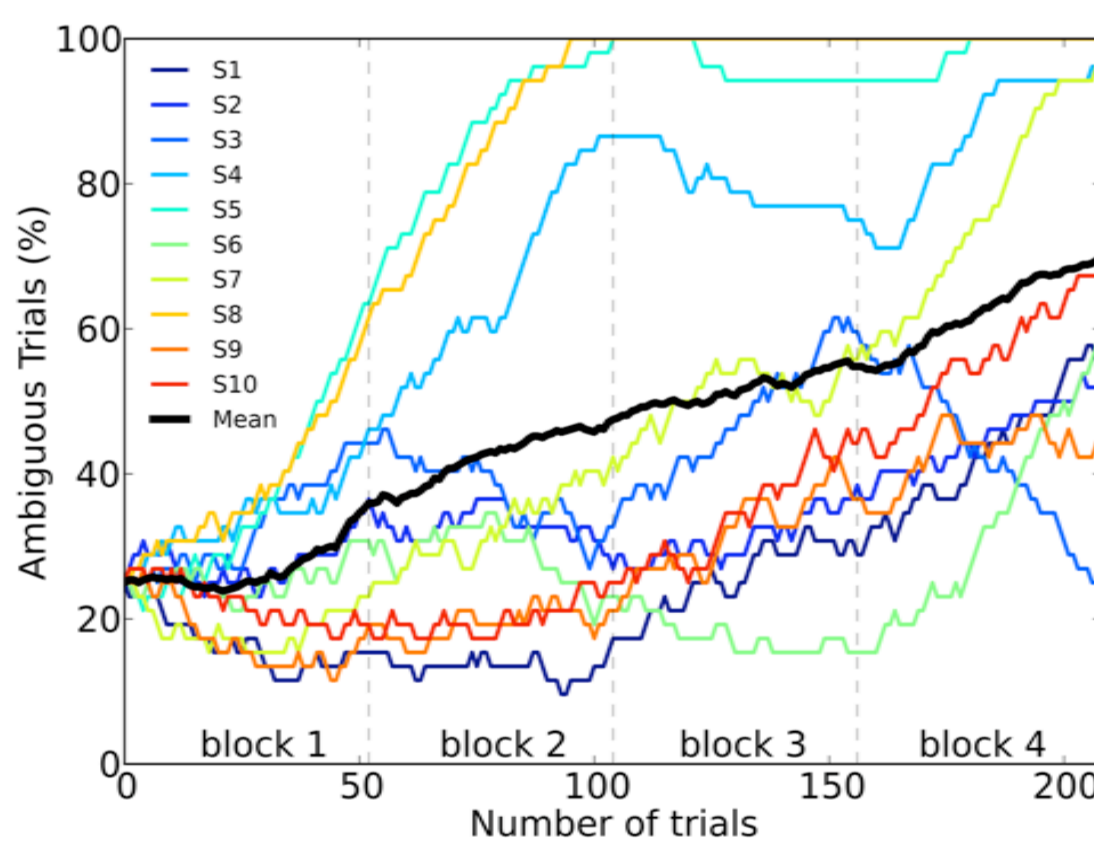


Results

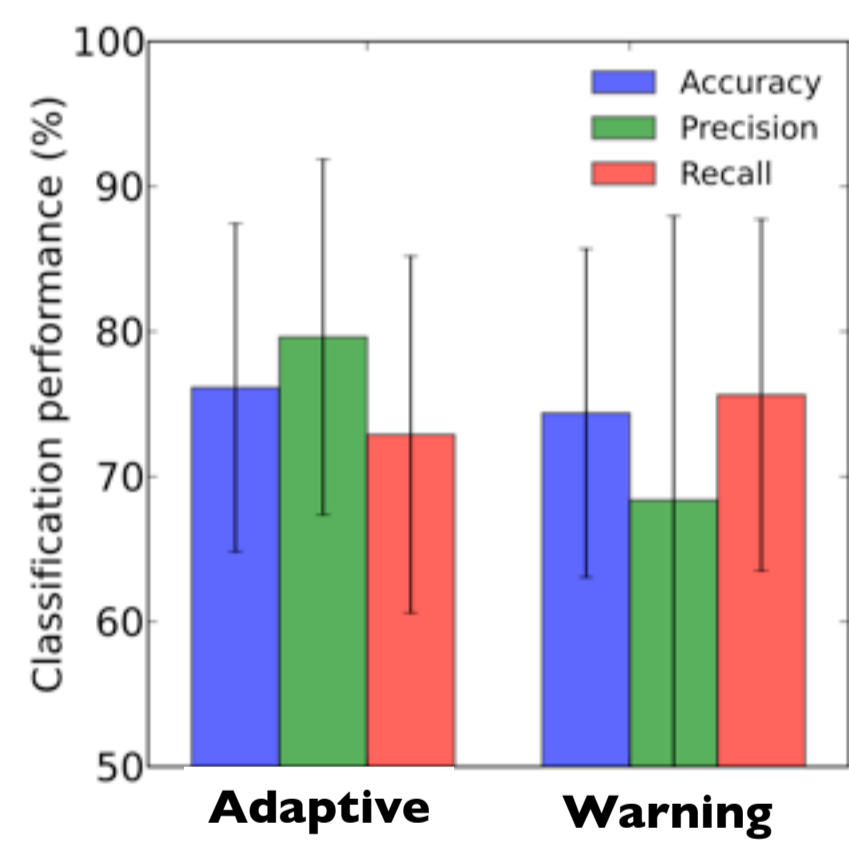
Enhanced visuospatial attention performance



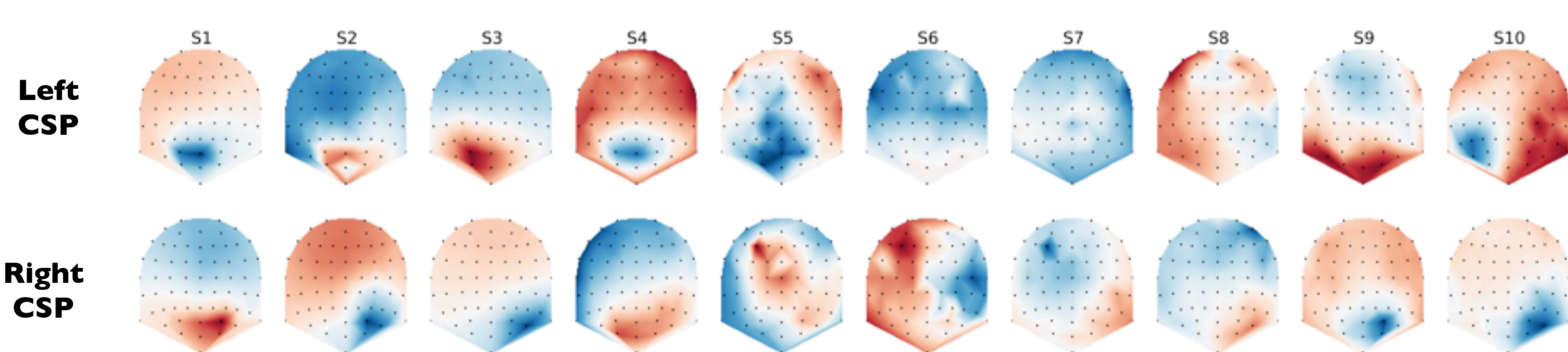
Online adaptation



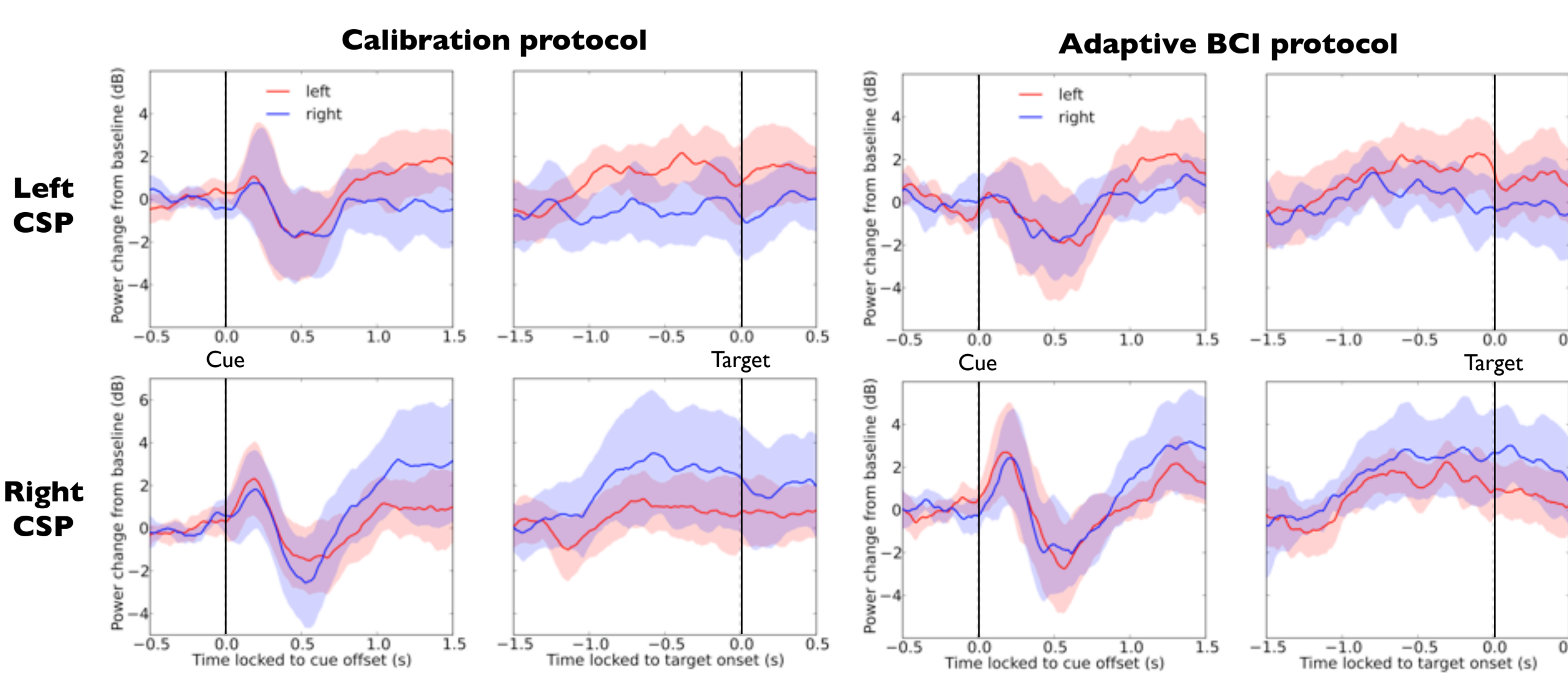
Classification



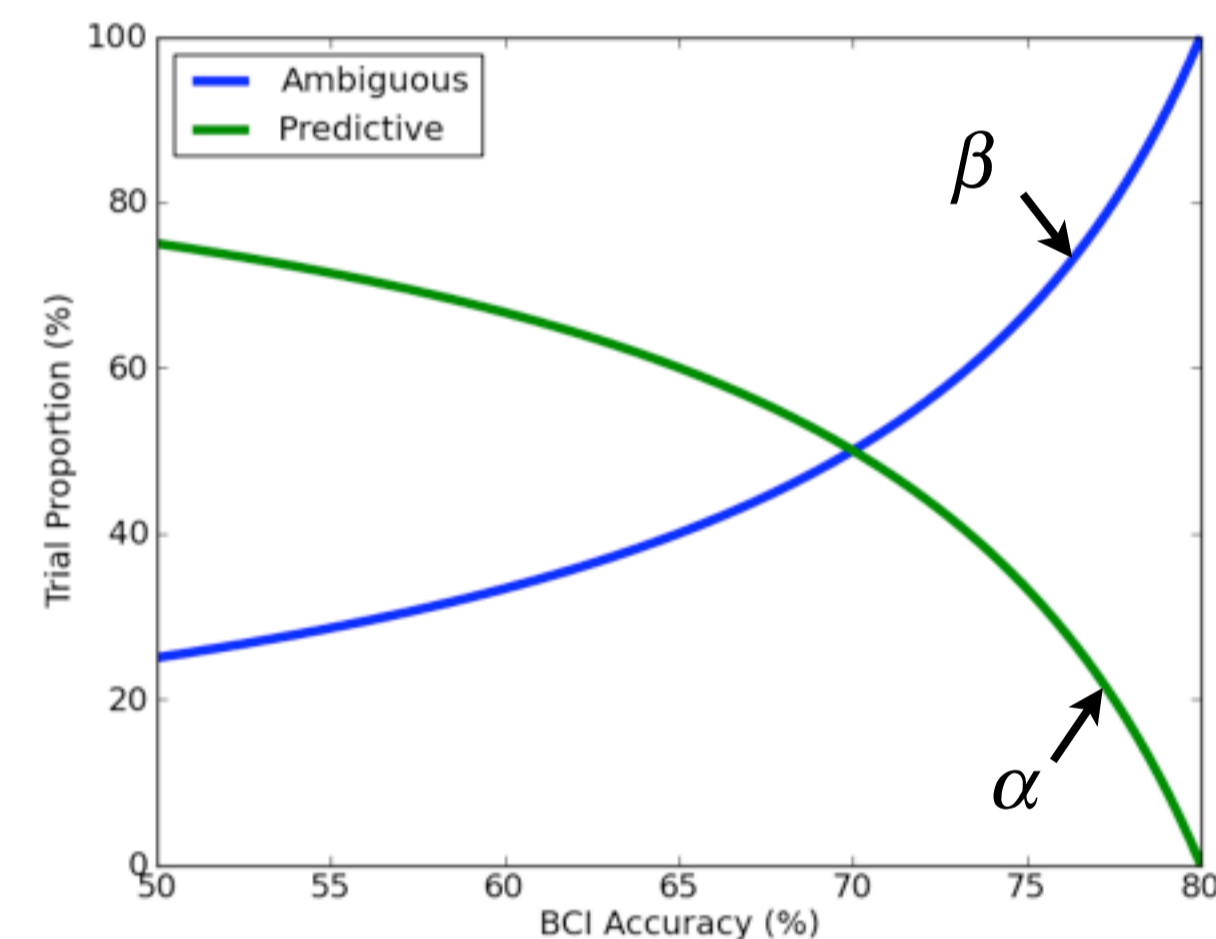
Selected CSP Patterns



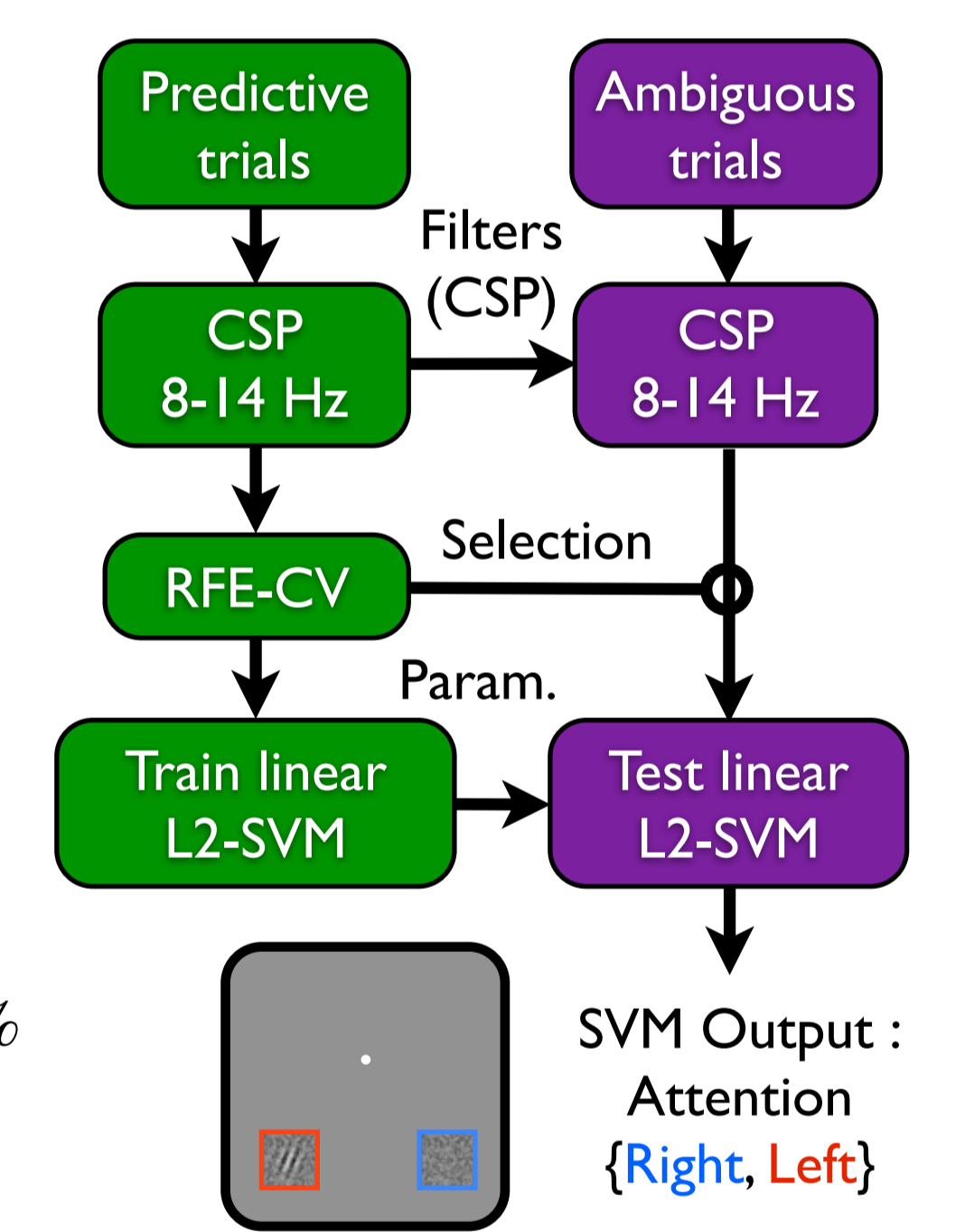
Power modulations



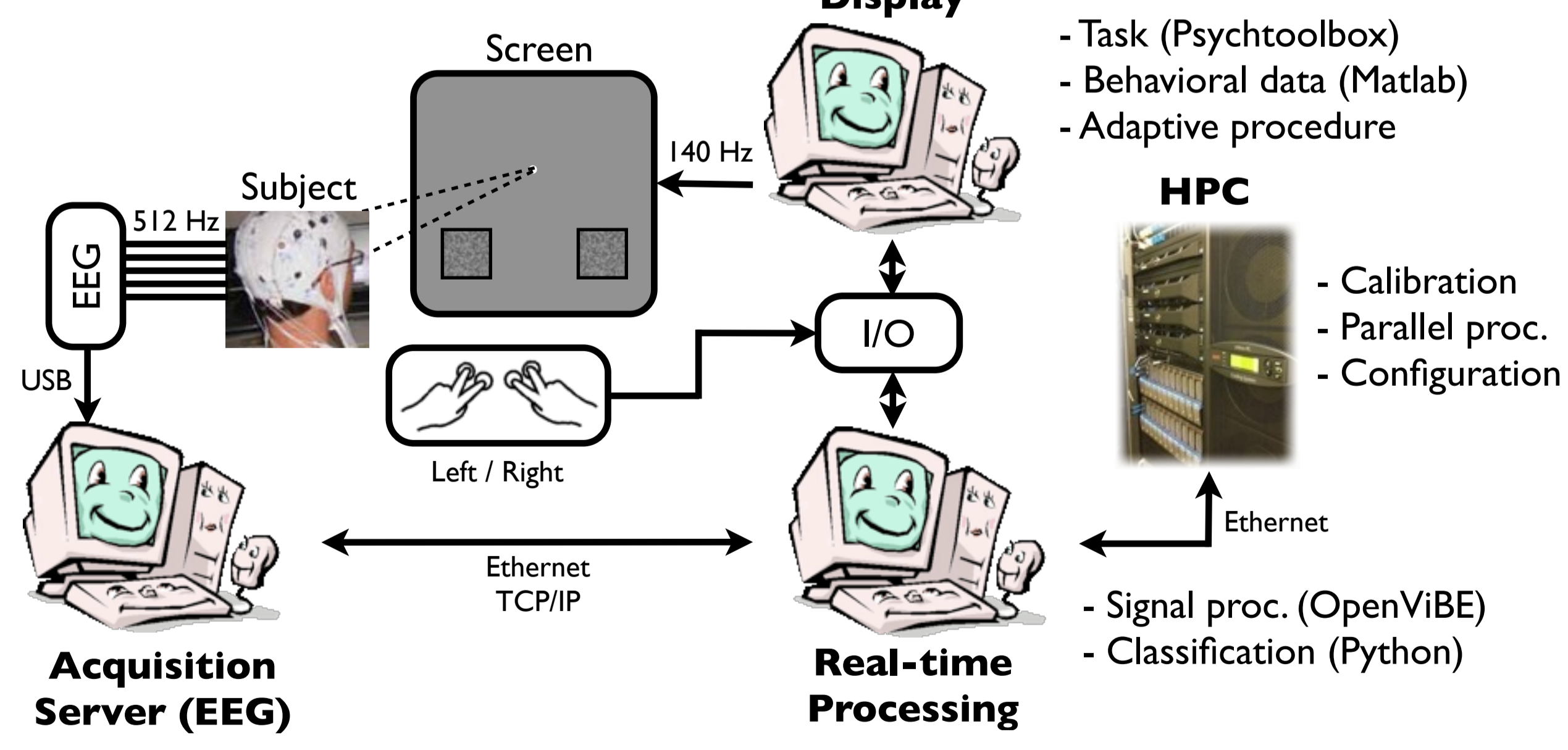
Trial-by-trial adaptation



Single-trial classification



Experimental setup



Conclusion

- Real-time classification of **covert** attention using occipital α -band power features.
- New BCIs enhancing visuospatial attention performance by **adapting** targets display at attended location or **warning** subjects at unattended location.
- **Spatial errors** reduced in the adaptive display protocol.
- **Reaction speed** and **accuracy** enhanced in both protocols.