



HAL
open science

Randomized matching heuristics with quality guarantees on shared memory parallel computers

Fanny Dufossé, Kamer Kaya, Bora Uçar

► To cite this version:

Fanny Dufossé, Kamer Kaya, Bora Uçar. Randomized matching heuristics with quality guarantees on shared memory parallel computers. [Research Report] RR-8386 ; Rapport LAAS n°13578, 2013, pp.28. hal-00877211v2

HAL Id: hal-00877211

<https://inria.hal.science/hal-00877211v2>

Submitted on 28 Oct 2013 (v2), last revised 7 Jul 2014 (v3)

HAL is a multi-disciplinary open access archive for the deposit and dissemination of scientific research documents, whether they are published or not. The documents may come from teaching and research institutions in France or abroad, or from public or private research centers.

L'archive ouverte pluridisciplinaire **HAL**, est destinée au dépôt et à la diffusion de documents scientifiques de niveau recherche, publiés ou non, émanant des établissements d'enseignement et de recherche français ou étrangers, des laboratoires publics ou privés.



Randomized matching heuristics with quality guarantees on shared memory parallel computers

Fanny Dufossé, Kamer Kaya, Bora Uçar

**RESEARCH
REPORT**

N° 8386

October 2013

Project-Team ROMA



Randomized matching heuristics with quality guarantees on shared memory parallel computers

Fanny Dufossé*, Kamer Kaya†, Bora Uçar‡

Project-Team ROMA

Research Report n° 8386 — October 2013 — 25 pages

Abstract: We propose two heuristics for the bipartite matching problem that are amenable to shared-memory parallelization. The first heuristic is very intriguing from parallelization perspective. It has no significant algorithmic synchronization overhead and no conflict resolution is needed across threads. We show that this heuristic has an approximation ratio of around 0.632. The second heuristic is designed to obtain a larger matching by employing the well-known Karp-Sipser heuristic on a judiciously chosen subgraph of the original graph. We show that the Karp-Sipser heuristic always finds a maximum cardinality matching in the chosen subgraph. Although the Karp-Sipser heuristic is hard to parallelize for general graphs, we exploit the structure of the selected subgraphs to propose a specialized implementation which demonstrates a very good scalability. Based on our experiments and theoretical evidence, we conjecture that this second heuristic obtains matchings with cardinality of at least 0.866 of the maximum cardinality. We discuss parallel implementations of the proposed heuristics on shared memory systems. Experimental results, for demonstrating speed-ups and verifying the theoretical results in practice, are provided.

Key-words: matching, bipartite graphs, graphs, randomized algorithm, approximation algorithm, shared memory.

* LAAS CNRS - Université de Toulouse, 7 avenue du colonel Roche, F-31400 Toulouse, France

† The Ohio State University, Dept. of Biomedical Informatics, Columbus, OH, USA

‡ CNRS and LIP (CNRS-ENS Lyon-INRIA-UCBL), 46, allée d'Italie, ENS Lyon, Lyon F-69364, France.

**RESEARCH CENTRE
GRENOBLE – RHÔNE-ALPES**

Inovallée
655 avenue de l'Europe Montbonnot
38334 Saint Ismier Cedex

Heuristiques aléatoires de couplage avec garantie de cardinalité pour les ordinateurs parallèles à mémoire partagée

Résumé : Cet article étudie le problème de couplage dans des graphes bipartis et propose deux heuristiques adaptées à une parallélisation dans un contexte de mémoire partagée. La première heuristique est particulièrement intéressante du point de vue du parallélisme. Sa parallélisation ne cause aucun surcoût lié à des synchronisations, ni aucun conflit mémoire. Nous montrons que cette heuristique approche le couplage maximal d'un ratio d'environ 0,632. La seconde heuristique utilise l'heuristique de Karp-Sipser sur un sous-graphe judicieusement choisi du graphe original. Nous montrons que l'algorithme de Karp-Sipser obtient toujours le couplage maximal pour le sous-graphe considéré. Cet algorithme n'est que difficilement parallélisable dans le cas général, mais la structure particulière des sous-graphes considérés nous permet de proposer une implémentation adaptée à une exécution parallèle. Nous conjecturons que cette seconde heuristique approche le couplage maximal d'un ratio d'environ 0,866. Nous abordons les possibles implémentations parallèles de ces heuristiques sur un système à mémoire partagée. Des résultats expérimentaux montrent l'accélération du calcul due à l'exécution parallèle et confirment dans la pratique les résultats théoriques.

Mots-clés : couplage, graphes bipartis, graphes, algorithme aléatoire, algorithme d'approximation, mémoire partagée.

1 Introduction

We consider the maximum cardinality bipartite matching problem. A matching in a graph is a set of edges no two of which share a common vertex. The maximum cardinality matching problem asks for a matching of maximum size. There are a number of polynomial time algorithms to solve this problem exactly. The smallest worst-case time complexity of the known algorithms is $\mathcal{O}(\sqrt{n}\tau)$ for a bipartite graph with n vertices and τ edges—the first of such algorithms is described by Hopcroft and Karp [16]. There is considerable interest in simpler and faster algorithms that have some approximation guarantee. Such cheap algorithms are used as a jump-start routine by the current state of the art matching algorithms [10, 23]. Most of these heuristics obtain good results in practice, but their worst-case guarantee is only around $1/2$. A well-known heuristic, called Karp-Sipser (KS) heuristic [18], finds maximum cardinality matchings in highly sparse (random) graphs but does not have a constant ratio approximation for denser ones (this algorithm will be reviewed later in Section 2). Algorithms that achieve an approximation ratio of $1 - 1/e$, where e is the base of the natural logarithm are designed for the online case [19]. Many of these algorithms are sequential in nature in that a sequence of greedy decisions are made in the light of the previously made decisions.

We propose two matching heuristics (Section 3) for bipartite graphs. Both heuristics construct a subgraph of the input graph by randomly choosing some edges. They then obtain a maximum matching in the selected subgraph and return it as an approximate matching for the input graph. The probability density function for choosing a given edge in both heuristics is obtained with a sparse matrix scaling method. The first heuristic is shown to deliver a constant approximation guarantee of 0.632 of the maximum cardinality matching. The second one builds on top of the first one and improves the approximation ratio. Based on thorough experiments and theoretical evidence, we conjecture that the second heuristic obtains matchings with cardinality of at least 0.866 of the maximum. Both of the heuristics are designed to be amenable to parallelization. The first heuristic does not require a conflict resolution scheme nor it has any synchronization requirements. The second heuristic employs KS to find a matching on the selected subgraph. We show that KS becomes an exact algorithm on those subgraphs. Further analysis of the properties of those subgraphs is carried out to design a specialized implementation of KS for efficient parallelization on shared memory systems. The approximation guarantees of the two proposed heuristics do not deteriorate with the increased degree of parallelization, thanks to their design, which is usually not the case for parallel matching heuristics [4].

Let $G = (V_R \cup V_C, E)$ be a bipartite graph, where V_R and V_C are two vertex classes and E is the edge set. G can be represented as a sparse matrix \mathbf{A} . Each row (column) of \mathbf{A} corresponds to a unique vertex in V_R (in V_C) so that $a_{ij} = 1$ if and only if $(v_i, v_j) \in E$. We first assume that bipartite graphs have two properties: (i) the same number of vertices in both vertex classes; (ii) each edge appears in a matching that contains all vertices. These bipartite graphs correspond to square, fully indecomposable matrices. These assumptions simplify the theoretical analysis. Later on, we discuss the bipartite graphs without these properties and demonstrate (in Section 4) that the proposed heuristics deliver results that concur with those of the assumed case.

2 Notation and preliminaries

Using the analogy between a matrix and a bipartite graph, we refer to the vertices in the two classes as row and column vertices. The number of edges incident on a vertex is called its degree. A *path* in a graph is a sequence of vertices such that each consecutive vertex pair share an edge. A vertex *is reachable from* another one, if there is a path between them. The *connected components* of a graph are the equivalence classes of vertices under the “is reachable from” relation. A *cycle* in a graph is a path whose start and end vertices are the same. A *simple cycle* is a cycle with no vertex repetitions. A *tree* is a connected graph with no cycles. A *spanning tree* of a connected graph G is a tree containing all vertices of G .

2.1 Matching

A matching \mathcal{M} in a graph $G = (V_R \cup V_C, E)$ is a subset of edges E where a vertex in $V_R \cup V_C$ is in at most one edge in \mathcal{M} . Given a matching \mathcal{M} , a vertex v is said to be *matched* by \mathcal{M} if v is in an edge of \mathcal{M} , otherwise v is called *unmatched*. If all the vertices are matched by \mathcal{M} , then \mathcal{M} is said to be a *perfect matching*. The *cardinality* of a matching \mathcal{M} , denoted by $|\mathcal{M}|$, is the number of edges in \mathcal{M} . The maximum cardinality matching problem asks for a matching of maximum size. There are a number of well-known, exact, and polynomial-time algorithms for this problem. A recent paper [20] gives a classification of those algorithms.

Parallel (exact) matching algorithms on modern architectures have been recently investigated. Azad et al. [4] study the implementations of a set of known bipartite graph matching algorithms on shared memory systems. Deveci et al. [8, 9] investigate the implementation variants of some matching algorithms on GPU. There are quite good speedups reported in these implementations, yet there are non-trivial instances where parallelism does not help in any of them.

Our focus is on matching heuristics that have linear running time complexity and good quality guarantees on the size of the matching. A survey of matching heuristics is given by Kaya et al. [10] and Langguth et al. [23]. Recent studies focusing on approximate matching algorithms on parallel systems include heuristics for graph matching problem [5, 14, 15] and also heuristics used for initializing bipartite matching algorithms [4].

The simplest heuristic is called the *cheap matching* that has two variants in the literature. The first variant randomly visits the edges and matches the two endpoints of an edge if they are both available. The theoretical performance guarantee of this heuristic is $1/2$, i.e., the heuristic delivers matchings of size at least half of the maximum matching cardinality. This is analyzed theoretically [12] and shown to obtain results that are near the worst-case on certain classes of graphs. The second variant of the cheap matching heuristic repeatedly selects a random vertex and matches it with a random neighbor. The matched vertices, along with the ones which become isolated, are removed from the graph and the process continues until the whole graph is consumed. This variant also has a $1/2$ worst-case approximation guarantee (see for example a proof by Pothen and Fan [27]), and it is somewhat better ($0.5 + \epsilon$ for $\epsilon \geq 0.0000025$ [2] which has been recently improved to $\epsilon \geq 1/256$ [25]).

We make use of a heuristic algorithm, called Karp-Sipser (KS). We summarize it and refer the reader to original paper [18]. The theoretical foundation of the KS heuristic is that if there is a vertex v with exactly one neighbor (v is called *degree-one*), then there is a maximum cardinality matching in which v is matched with its neighbor. That is, matching v with its neighbor is an *optimal* decision. Using this, the KS heuristic runs as follows. Check whether there is a degree-one vertex; if so then match the vertex with its unique neighbor and delete both vertices (and the edges incident on them) from the graph. Continue this way until the graph has no edges (in which case we are done) or all remaining vertices have degree larger than one. In the latter case, pick a random edge, match the two endpoints of this edge, and delete those vertices and the edges incident on them. Then repeat the whole process on the remaining graph. The phase before the first random choice of edges made by the KS algorithm is called Phase 1, and the rest is called Phase 2 (where new degree-one vertices may arise). The running time of this heuristic is linear. This heuristic matches all but $\tilde{O}(n^{1/5})$ vertices of a general graph [3]. One disadvantage of KS is that because of the degree dependencies of the vertices to the already matched vertices, an efficient parallelism is hard to achieve (a list of degree-one vertices needs to be maintained). That is probably why some inflicted forms (successful but without any known quality guarantee) of this heuristic were used in recent studies [4].

2.2 Scaling matrices to doubly stochastic form

An $n \times n$ matrix \mathbf{A} is said to have a *support* if there is a perfect matching in the associated bipartite graph. An $n \times n$ matrix \mathbf{A} is said to have *total support* if all its nonzero entries can be put into a perfect matching. Any nonnegative matrix \mathbf{A} with total support can be scaled with two (unique) positive diagonal matrices \mathbf{D}_R and \mathbf{D}_C such that $\mathbf{D}_R \mathbf{A} \mathbf{D}_C$ is doubly stochastic (that is, the sum of entries in any row and in any column of $\mathbf{D}_R \mathbf{A} \mathbf{D}_C$ is equal to one). If \mathbf{A} has a support but not a total support then \mathbf{A} can be scaled to a doubly stochastic matrix but not with two positive diagonal matrices (see [29] or more recent treatments [21, 22, 28]).

Here we review two algorithms for doubly-stochastic matrix scaling from the literature. The Sinkhorn-Knopp scaling algorithm [29] generates a sequence of matrices (whose limit is doubly stochastic) by normalizing the columns and the rows of the sequence of matrices alternately. That is, the initial matrix is normalized such that each column has sum one. Then, the resulting matrix is normalized so that each row has sum one and so on so forth. This algorithm has been recently analyzed where most of the known results are summarized [21].

Another scaling algorithm is proposed by Ruiz [28], parallelized for distributed [1] and shared memory [6] parallel systems, and its properties are investigated [22]. This algorithm also builds a sequence of matrices converging to a double stochastic matrix. Instead of normalizing the rows and columns of the matrices alternately, this algorithm scales the rows and the columns of each matrix in the sequence. It has been shown that [22] this algorithm converges slower than the Sinkhorn-Knopp algorithm for unsymmetric matrices. For the symmetric matrices, there is no such a clear cut distinction.

We use a parallel implementation of the Sinkhorn-Knopp scaling method, shown in Algorithm 1, but other doubly stochastic scaling methods can also be

used. In Algorithm 1, \mathbf{A}_{i*} and \mathbf{A}_{*j} are the sets of column and row indices of the nonzeros at the i th row and j th column of \mathbf{A} , respectively. Instead of the diagonal scaling matrices \mathbf{D}_r and \mathbf{D}_c , we use two arrays \mathbf{d}_r and \mathbf{d}_c to store the (diagonal) entries of the scaling matrices. As is seen, the method runs until convergence, where we want to stop when both the row sums and column sums are sufficiently close to one. At each iteration, we first balance the columns and then the rows, at which point the row sums are one (modulo round-off errors), but the column sums are not. The stopping criteria for convergence is therefore to have the maximum difference between the column sums and one (there are columns with sum less than one, and also there are columns with sum more than one) as small as possible. At the end, $\mathbf{d}_r[i] \times a_{ij} \times \mathbf{d}_c[j]$ gives the scaled entry.

<p>Input: \mathbf{A}: an $n \times n$ matrix with total support Output: $\mathbf{d}_r, \mathbf{d}_c$: row/column scaling arrays</p> <ol style="list-style-type: none"> 1: for $i = 1$ to n in parallel do 2: $\mathbf{d}_r[i] \leftarrow 1$ 3: $\mathbf{d}_c[i] \leftarrow 1$ 4: while not converged do 5: for $j = 1$ to n in parallel do 6: $csum \leftarrow \sum_{i \in \mathbf{A}_{*j}} \mathbf{d}_r[i] \times a_{ij}$ 7: $\mathbf{d}_c[j] \leftarrow 1/csum$ 8: for $i = 1$ to n in parallel do 9: $rsum \leftarrow \sum_{j \in \mathbf{A}_{i*}} a_{ij} \times \mathbf{d}_c[j]$ 10: $\mathbf{d}_r[i] \leftarrow 1/rsum$
--

Algorithm 1: SCALESK: Parallel Sinkhorn-Knopp scaling

3 Two matching heuristics

We propose two simple matching heuristics for the maximum cardinality bipartite matching problem that are highly parallelizable and have guaranteed approximation ratios. The first heuristic does not require synchronization or conflict resolution. This heuristic and its approximation guarantee of around 0.632 are discussed in the following subsection. The second heuristic is designed to obtain larger matchings compared to those obtained by the first one. This heuristic employs KS on a judiciously chosen subgraph of the input graph. We show that for this subgraph, the KS heuristic is an exact maximum cardinality matching algorithm. Based on our experiments and theoretical evidence, we conjecture that the second heuristic obtains matchings of size around 0.866 of the maximum matching cardinality.

3.1 One-sided matching

The first matching heuristic we propose, `ONESIDEDMATCH`, scales the given adjacency matrix \mathbf{A} (each a_{ij} is originally either 0 or 1) and uses the scaled entries to randomly choose a column as a match for each row. The pseudocode of the heuristic is shown in Algorithm 2.

`ONESIDEDMATCH` first obtains the scaling vectors \mathbf{d}_r and \mathbf{d}_c corresponding to a doubly stochastic matrix \mathbf{S} (line 1). After initializing the `cmatch` array,

Input: \mathbf{A} : an $n \times n$, (0,1)-matrix with total support

Output: $\text{cmatch}[\cdot]$: the rows matched to columns

1: $(\mathbf{d}_r, \mathbf{d}_c) \leftarrow \text{SCALESK}(\mathbf{A})$

2: **for** $j = 1$ **to** n **in parallel do**

3: $\text{cmatch}[j] \leftarrow \text{NIL}$

4: **for** $i = 1$ **to** n **in parallel do**

5: Pick a random column $j \in \mathbf{A}_{i*}$ by using the probability density function

$$p_i(k) = \frac{s_{ik}}{\sum_{\ell \in \mathbf{A}_{i*}} s_{i\ell}}, \text{ for all } k \in \mathbf{A}_{i*}$$

where $s_{ik} = \mathbf{d}_r[i] \times \mathbf{d}_c[k]$ is the corresponding entry in the scaled matrix $\mathbf{S} = \mathbf{D}_R \mathbf{A} \mathbf{D}_C$.

6: $\text{cmatch}[j] \leftarrow i$

Algorithm 2: ONESIDEDMATCH

for each row i of \mathbf{A} , the heuristic randomly chooses a column $j \in \mathbf{A}_{i*}$ based on the probabilities computed by using corresponding scaled entries of row i . It then matches i and j . Clearly multiple rows can choose the same column and write to the same entry in cmatch . In a parallel, shared-memory setting, the last write operation survives, and the cmatch array defines a valid matching, i.e., $\{\{\text{cmatch}[j], j\} : \text{cmatch}[j] \neq \text{NIL}\}$. We now analyze its approximation guarantee in terms of the matching cardinality.

Theorem 1. *Let \mathbf{A} be an $n \times n$, (0,1)-matrix with total support. Then, ONESIDEDMATCH obtains a matching of size at least $n(1 - 1/e) \approx 0.632n$.*

Proof. To compute the matching cardinality, we will count the columns that are not picked by any row and subtract it from n . Since $\sum_{k \in \mathbf{A}_{i*}} s_{ik} = 1$ for each row i of \mathbf{S} , the probability that a column j is not picked by any of the rows in \mathbf{A}_{*j} is equal to $\prod_{i \in \mathbf{A}_{*j}} (1 - s_{ij})$. By applying the arithmetic-geometric mean inequality, we obtain

$$\sqrt[d_j]{\prod_{i \in \mathbf{A}_{*j}} (1 - s_{ij})} \leq \frac{d_j - \sum_{i \in \mathbf{A}_{*j}} s_{ij}}{d_j},$$

where $d_j = |\mathbf{A}_{*j}|$ is the degree of column vertex j . Therefore,

$$\prod_{i \in \mathbf{A}_{*j}} (1 - s_{ij}) \leq \left(1 - \frac{\sum_{i \in \mathbf{A}_{*j}} s_{ij}}{d_j}\right)^{d_j}.$$

Since \mathbf{S} is doubly stochastic, we have $\sum_{i \in \mathbf{A}_{*j}} s_{ij} = 1$ and

$$\prod_{i \in \mathbf{A}_{*j}} (1 - s_{ij}) \leq \left(1 - \frac{1}{d_j}\right)^{d_j}.$$

The function on the right hand side above is an increasing one, and has the limit

$$\lim_{d_j \rightarrow \infty} \left(1 - \frac{1}{d_j}\right)^{d_j} = \frac{1}{e},$$

where e is the base of the natural logarithm. By the linearity of expectation, the expected number of unmatched columns is no larger than $\frac{n}{e}$. Hence, the cardinality of the matching is no smaller than $n(1 - 1/e)$. \square

In Algorithm 2, we split the rows among the threads with a **parallel for** construct. For each row i , the corresponding thread chooses a random number r from a uniform distribution with range $(0, \sum_{k \in \mathbf{A}_{i^*}} s_{ik}]$. Then the smallest column index j for which $\sum_{k \in \mathbf{A}_{i^*}} s_{ik} \leq r$ is found and `cmatch`[j] is set to i . Since no synchronization or conflict detection is required, the heuristic promises significant speedups.

3.2 Two-sided matching

ONESIDEDMATCH’s approximation guarantee and suitable structure for parallel architectures make it a good cheap matching heuristic. The natural question that follows is whether a heuristic with a better guarantee while without being too complicated to parallelize exists. We asked: “what happens if we repeat the process for the other (column) side of the bipartite graph”? The question led us to the following algorithm. Let each row select a column, and let each column select a row. Take all these $2n$ choices to construct a bipartite graph G (a subgraph of the input) with $2n$ vertices and at most $2n$ edges (if i chooses j and j chooses i , we have one edge), and seek a maximum cardinality matching in G . Since the number of edges is at most $2n$, any exact matching algorithm on this graph would be fast—in particular the worst case running time would be $\mathcal{O}(n^{1.5})$ [16]. Yet, we can do better and obtain a maximum cardinality matching in linear time by running the Karp-Sipser heuristic on G , as we display in Algorithm 3.

The most interesting component of TWOSIDEDMATCH is the incorporation of the Karp-Sipser heuristic for two reasons. First, although it is only a heuristic, KS computes a maximum cardinality matching on the bipartite graph G constructed in Algorithm 3. Second, although KS has a sequential nature, we can obtain good speedups with a specialized, parallel implementation. In general, it is hard to parallelize (non-trivial) graph algorithms, and it is even harder when the overall cost is $\mathcal{O}(n)$ which is the case for KS on G . We give a series of lemmas below which enables us to use KS as an exact algorithm with a good shared-memory parallel performance.

The first lemma describes the structure of G constructed at line 8 of TWOSIDEDMATCH.

Lemma 1. *Each connected component of G constructed in Algorithm 3 contains at most one simple cycle.*

Proof. A connected component $M \subseteq G$ with n' vertices can have at most n' edges. Let T be a spanning tree of M . Since T contains $n' - 1$ edges, the remaining edge in M can create at most one cycle when added to T . \square

Lemma 1 explains why KS is an exact algorithm on G . If a component does not contain a cycle, KS consumes all its vertices in Phase 1. Therefore, all of the matching decisions given by KS are optimal for this component. Assume a component contains a simple cycle. After Phase 1, the component is either consumed, or due to Lemma 1, it is reduced to a simple cycle. In the former case,

Input: \mathbf{A} : an $n \times n$, (0,1)-matrix with total support
Output: $\text{match}[\cdot]$: the mate of each vertex or *NIL*

- 1: $(\mathbf{d}_r, \mathbf{d}_c) \leftarrow \text{SCALESK}(\mathbf{A})$
- 2: **for** $i = 1$ **to** n **in parallel do**
- 3: Pick a random column $j \in \mathbf{A}_{i*}$ by using the probability density function
$$p_i(k) = \frac{s_{ik}}{\sum_{\ell \in \mathbf{A}_{i*}} s_{i\ell}}, \text{ for all } k \in \mathbf{A}_{i*}$$

where $s_{ik} = \mathbf{d}_r[i] \times \mathbf{d}_c[k]$ is the corresponding entry in the scaled matrix $\mathbf{S} = \mathbf{D}_R \mathbf{A} \mathbf{D}_C$.
- 4: $\text{rchoice}[i] \leftarrow j$
- 5: **for** $j = 1$ **to** n **in parallel do**
- 6: Pick a random row $i \in \mathbf{A}_{*j}$ by using the probability density function
$$q_j(k) = \frac{s_{kj}}{\sum_{\ell \in \mathbf{A}_{*j}} s_{\ell j}}, \text{ for all } k \in \mathbf{A}_{*j}.$$
- 7: $\text{cchoice}[j] \leftarrow i$
- 8: Construct a bipartite graph $G = (V_R \cup V_C, E)$ where
$$E = \{ \{i, \text{rchoice}[i]\} : i \in \{1, \dots, n\} \} \cup \{ \{ \text{cchoice}[j], j \} : j \in \{1, \dots, n\} \}.$$
- 9: $\text{match} \leftarrow \text{KARPSIPSER}(G)$

Algorithm 3: TWOSIDEDMATCH

the matching is a maximum cardinality one. In the latter case, an arbitrary edge of the cycle can be used to match a pair of vertices. This decision necessarily leads to a unique perfect matching in the remaining simple path. These two arguments can be repeated for all the connected components to see that the KS heuristic finds a maximum cardinality matching in G .

Algorithm 4 describes our parallel KS implementation `KARPSIPSERMT`. The graph is represented using a single array `choice`, where `choice[u]` is the vertex randomly chosen by $u \in V_R \cup V_C$. The `choice` array is a concatenation of the arrays `rchoice` and `cchoice` set in `TWOSIDEDMATCH`. Hence, an explicit graph construction for G (line 8 of Algorithm 3) is not required, and a transformation of the selected edges to a graph storage scheme is avoided. `KARPSIPSERMT` uses three atomic operations for synchronization. The first operation `_ADD(memory, value)` atomically adds a *value* to a *memory* location. It is used to compute the vertex degrees in the initial graph (line 9). The second operation `_COMPANDSWAP(memory, value, replace)` first checks whether the *memory* location has the *value*. If so, its content is *replaced*. The final content is returned. The third operation `_ADDANDFETCH(memory, value)` atomically adds a given *value* to a *memory* location and the final content is returned. We will describe the use of these two operations later.

`KARPSIPSERMT` has two phases which correspond to the two phases of KS. The first phase of `KARPSIPSERMT` is similar to that of KS in that optimal matching decisions are made about some degree-one vertices. The second phase of `KARPSIPSERMT` handles remaining vertices very efficiently, without bothering with their degrees. The following definitions are used to clarify the difference between an original KS implementation and `KARPSIPSERMT`.

```

Input:  $G = \{V, \text{choice}[\cdot]\}$ : the chosen vertex for each  $u \in V$ 
Output:  $\text{match}[\cdot]$ : the match array for  $u \in V$ 
1: for all  $u \in V$  in parallel do
2:    $\text{mark}[u] \leftarrow 1$ 
3:    $\text{deg}[u] \leftarrow 1$ 
4:    $\text{match}[u] \leftarrow \text{NIL}$ 
5: for all  $u \in V$  in parallel do
6:    $v \leftarrow \text{choice}[u]$ 
7:    $\text{mark}[v] \leftarrow 0$ 
8:   if  $\text{choice}[v] \neq u$  then
9:      $\_ADD(\text{deg}[v], 1)$ 
    ►Phase 1: process out-one vertices.
10: for each vertex  $u$  in parallel do
11:   if  $\text{mark}[u] = 1$  then
12:      $\text{curr} \leftarrow u$ 
13:     while  $\text{curr} \neq \text{NIL}$  do
14:        $\text{nbr} \leftarrow \text{choice}[\text{curr}]$ 
15:       if  $\_COMPANDSWAP(\text{match}[\text{nbr}], \text{NIL}, \text{curr}) = \text{curr}$  then
16:          $\text{match}[\text{curr}] \leftarrow \text{nbr}$ 
17:          $\text{curr} \leftarrow \text{NIL}$ 
18:          $\text{next} \leftarrow \text{choice}[\text{nbr}]$ 
19:         if  $\text{match}[\text{next}] = \text{NIL}$  then
20:           if  $\_ADDANDFETCH(\text{deg}[\text{next}], -1) = 1$  then
21:              $\text{curr} \leftarrow \text{next}$ 
22:           else
23:              $\text{curr} \leftarrow \text{NIL}$ 
    ►Phase 2: process the rest of the graph.
24: for each column vertex  $u$  in parallel do
25:    $v \leftarrow \text{choice}[u]$ 
26:   if  $\text{match}[u] = \text{NIL}$  and  $\text{match}[v] = \text{NIL}$  then
27:      $\text{match}[u] \leftarrow v$ 
28:      $\text{match}[v] \leftarrow u$ 

```

Algorithm 4: KARPSSIPSERMT

Definition 1. Given a matching and the array `choice`, let u be an unmatched vertex and $v = \text{choice}[u]$. Then u is called:

- *out-one*, if v is unmatched, and no unmatched vertex w with $\text{choice}[w] = u$ exists.
- *in-one*, if v is matched, and only a single unmatched vertex w with $\text{choice}[w] = u$ exists.

The first phase of KARPSSIPSERMT (**for** loop of line 10) does not track and match all degree-one vertices. Instead, only the out-one vertices are taken into account. For each such vertex u that is already out-one before Phase 1, we have $\text{mark}[u] = 1$. KARPSSIPSERMT visits these vertices (lines 10-11). Newly arising out-one vertices are consumed right away without maintaining a list. The second phase of KARPSSIPSERMT (**for** loop of line 24) is much simpler than that of KS as the degrees of the vertices are not tracked/updated. We now discuss how these simplifications are possible while ensuring a maximum cardinality matching in G .

Observation 1. *An out-one or an in-one vertex is a degree-one vertex according to KS.*

Observation 2. *A degree-one vertex (of KS) is either an out-one or an in-one vertex, or it is one of the two vertices u and v in a 2-clique such that $v = \text{choice}[u]$ and $u = \text{choice}[v]$.*

Lemma 2. *If there exists an in-one vertex in G at any time during the execution of KARPSSIPSERMT, an out-one vertex also exists.*

Proof. Let u be an in-one vertex and let v be the unmatched vertex such that $\text{choice}[v] = u$. Let \mathcal{P} be the longest vertex sequence w_1, w_2, \dots, w_k, u such that all w_i s are unmatched, $\text{choice}[w_i] = w_{i+1}$ for $1 \leq i < k$, and $v = w_k$. If \mathcal{P} has a finite length, then w_1 is an out-one vertex and we are done. On the other hand, if \mathcal{P} has an infinite length it must contain a cycle. Furthermore, u must be in this cycle, since each w_i 's next vertex, which also needs to be in the cycle, is uniquely defined by `choice`. But u is an in-one vertex and $\text{choice}[u]$ is already matched. Thus \mathcal{P} has a finite length, and an out-one vertex (w_1) always exists. \square

According to Observation 1, all the matching decisions given by KARPSSIPSERMT in Phase 1 are optimal, since an out-one vertex is a degree-one vertex. Observation 2 implies that among all the degree-one vertices, KARPSSIPSERMT ignores only the in-ones and 2-cliques. According to Lemma 2, an in-one vertex cannot exist without an out-one vertex, therefore they are handled in the same phase. The 2-cliques that survive Phase 1 are handled in KARPSSIPSERMT's Phase 2, since they can be considered as cycles.

To analyze the second phase of KARPSSIPSERMT, we will use the following lemma.

Lemma 3. *Let $G' = (V'_R \cup V'_C, E')$ be the graph induced by the remaining vertices after the first phase of KARPSSIPSERMT. Then, the set*

$$\{(u, \text{choice}[u]) : u \in V'_R, \text{choice}[u] \in V'_C\}$$

is a maximum cardinality matching in G' .

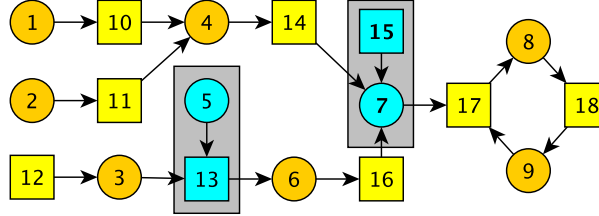


Figure 1: A toy bipartite graph with 9 row (circles) and 9 column (squares) vertices. The edges are oriented from a vertex u to the vertex $\text{choice}[u]$. Assuming all the vertices are currently unmatched, matching 15-7 (or 5-13) creates two degree-one vertices. But no out-one vertex arises after matching (15-7) and only one, vertex 6, arises after matching (5-13).

Proof. Apart from 2-cliques, no out-one or in-one (that is no degree-one) vertex remains after Phase 1. A component of G' can be a trivial (a singleton vertex), a 2-clique, or a simple cycle, according to Lemma 1. Let P be a non-trivial component. Since the original graph is bipartite, if P is a cycle it has the edges $(u, \text{choice}[u])$ and $(\text{choice}[v], v)$ for $u \in V'_R \cap P$ and $v \in V'_C \cap P$. The edge set $\{(u, \text{choice}[u]) : u \in V'_R \cap P, \text{choice}[u] \in V'_C\}$ defines a maximum cardinality matching for P . The union of these edge sets matches all the vertices except those in the trivial components, hence it is a maximum matching in G' . \square

In the light of Observations 1 and 2 and Lemmas 1–3, KARPSIPSERMT is an exact algorithm on the graphs created in Algorithm 3. The worst case (sequential) running time of our implementation of KS is linear.

KARPSIPSERMT tracks and consumes only the out-one vertices. This brings high flexibility while executing KARPSIPSERMT in multi-threaded environments. Consider the example in Figure 1. Here, after matching a pair of vertices and removing them from the graph, multiple degree-one vertices can be generated. The standard KS uses a list to store these new degree-one vertices. Such a list is necessary to obtain larger matching, but the associated synchronizations while updating it in parallel will be an obstacle for parallel efficiency. The synchronization can be avoided up to some level if one sacrifices the approximation quality by not making all optimal decisions (as in [4]). We continue with the following lemma to take advantage of the special structure of the graphs in TWOSIDEDMATCH for parallel efficiency in Phase 1.

Lemma 4. *Consuming an out-one vertex creates at most one new out-one vertex.*

Proof. Let u be the out-one vertex that is selected by KARPSIPSERMT and let v be $\text{choice}[u]$. Since u is a degree-one vertex, its removal will only affect v . On the other hand, although a number of in-one vertices may appear, v 's removal can only make the vertex $w = \text{choice}[v]$ out-one. This happens iff w is still unmatched and there is no other unmatched vertex y such that $\text{choice}[y] = w$. \square

According to Lemma 4, KARPSIPSERMT does not need a list to store the new out-one vertices, since the process can continue with the new out-one ver-

tex. In a shared-memory setting, there are two concerns for the first phase from the synchronization point of view. First, multiple threads that are consuming different out-one vertices can try to match them with the same unmatched vertex. To handle such cases, KARPSSIPSERMT uses the atomic `_COMPANDSWAP` operation (line 15 of Algorithm 4) and ensures that only one of these matchings will be processed. In this case, other threads, whose matching decisions are not performed, continue with the next vertex in the **for** loop at line 10. The second concern is that while consuming out-one vertices, several threads may create the same out-one vertex (and want to continue with it). For example, in Figure 1, when two threads consume the out-one vertices 1 and 2 at the same time, they both will try to continue with vertex 4. To handle such cases, an atomic `_ADDANDFETCH` operation (line 20 of Algorithm 4) is used to synchronize the degree reduction operations on the potential out-one vertices. This approach explicitly orders the vertex consumptions and guarantees that only the thread who performs the last consumption before a new out-one vertex u appears continues with u . The other threads who originally want to continue with the same path stop and skip to the next unconsumed out-one vertex in the main **for** loop.

The second phase of KARPSSIPSERMT is efficiently parallelized by using the idea in Lemma 3. That is, a maximum cardinality matching for the graph remaining after the first phase of KARPSSIPSERMT can be obtained via a simple parallel **for** construct (see line 24 of Algorithm 4).

Quality of approximation

We do not have a proof on the approximation guarantee of `TWOSIDEDMATCH`. However, we have some theoretical evidence which suggests that the quality guarantee of `TWOSIDEDMATCH` is at least $0.866n$. Let the initial matrix \mathbf{A} be an $n \times n$ matrix of 1s; that is $a_{ij} = 1$ for all $1 \leq i, j \leq n$. Then, the doubly stochastic matrix \mathbf{S} is such that $s_{ij} = \frac{1}{n}$ for all $1 \leq i, j \leq n$. In this case, the graph G created by Algorithm 3 is a random 1-out bipartite graph [30]. Referring to a study by Meir and Moon [24], Karoński and Pittel [17] argue that the maximum cardinality of a matching in a random 1-out bipartite graph is $2(1 - \rho)n \approx 0.866n$ where $\rho \approx 0.567$ is the unique solution of the equation $xe^x = 1$. Based on this last observation and experimental results (some of which presented in the next section), we conjecture that when called on a matrix with total support, Algorithm 3 has an approximation guarantee of about $0.866n$. We formally state our conjecture as follows.

Conjecture 1. *Let \mathbf{A} be an $n \times n$ matrix with total support. Then, `TWOSIDEDMATCH` obtains, almost always surely, a matching of size $0.866n$.*

The proof of this conjecture will significantly improve the known results about the Karp-Sipser heuristic (recall that it is known to left out $\tilde{O}(n^{1/5})$ vertices) by showing a constant approximation ratio with some preprocessing. As we will argue in the next section, the existence of a total support does not seem to be necessary for the conjecture to hold.

3.3 Further discussions

The Sinkhorn-Knopp scaling algorithm converges linearly (when \mathbf{A} has total support) where the rate is equivalent to the square of the second largest singular

value of the resulting, doubly stochastic matrix [21]. Although convergence is not required, we can bound the theoretical running time of `ONESIDEDMATCH` and `TWOSIDEDMATCH` as linear (hiding the number of iterations to convergence behind the big-oh notation). If the matrix does not have (total) support, less is known about the Sinkhorn-Knopp scaling algorithm, in which case, we are not able to bound the running time of the scaling step. However, the scaling algorithms should be run only a few iterations (see also below), in which case the practical running time of our heuristics become linear (in edges and vertices).

We have discussed the proposed matching heuristics while assuming that \mathbf{A} has total support. This can be relaxed in two ways to render the overall approach practical in any bipartite graph. First, we do not need to run the scaling algorithms until convergence. If $\sum_{i \in \mathbf{A}_{*j}} s_{ij} \geq \alpha$ instead of $\sum_{i \in \mathbf{A}_{*j}} s_{ij} = 1$ for all $j \in \{1, \dots, n\}$ then, $\lim_{d \rightarrow \infty} \left(1 - \frac{\alpha}{d}\right)^d = \frac{1}{e^\alpha}$. In other words, if we apply the scaling algorithms a few iterations, or until some relatively large error tolerance, we can still derive similar results. For example, if $\alpha = 0.92$, we will have a matching of size $n \left(1 - \frac{1}{e^\alpha}\right) \approx 0.6015n$ (column sums that are larger than one give improved ratios; but there are columns whose sum is less than one, when the convergence is not achieved) for Algorithm 2. In our experiments, the number of iterations were always a few, where `ONESIDEDMATCH`'s proven approximation guarantee and `TWOSIDEDMATCH`'s conjectured guarantee were always observed. The second relaxation is that we do not need total support; we do not even need support nor equal number of vertices in the two vertex classes. We note that most theoretical studies on randomized matching heuristics concentrates on graphs with perfect matching, as this is enough to present approximation guarantees [25, Section 2]. Since little is known about the scaling methods on such matrices, we do not dwell into the subject (scaling algorithms are not our focus), but we mention some facts and observations, and later on, present some experiments to demonstrate the practicality of the proposed `ONESIDEDMATCH` and `TWOSIDEDMATCH` heuristics.

A sparse matrix (not necessarily square) can be permuted into a block upper triangular form using the canonical Dulmage-Mendelsohn (DM) decomposition [11]

$$\mathbf{A} = \begin{pmatrix} H & * & * \\ O & S & * \\ O & O & V \end{pmatrix}, \quad S = \begin{pmatrix} S_1 & * \\ O & S_2 \end{pmatrix}$$

where, H (horizontal) has more columns than rows and has a matching covering all rows; S is square and have a perfect matching; and V (vertical) has more rows than columns and a matching covering all columns. The following facts about the DM decomposition are well known [26, 27]. Any of these three blocks can be void. If H is not connected, then it is block diagonal with horizontal blocks. If V is not connected, then it is block diagonal with vertical blocks. If S does not have total support, then it is in block upper triangular form, shown on the right, where S_1 and S_2 have the same structure recursively, until each block S_i is has total support. The entries in the blocks shown by "*" cannot be put into a maximum cardinality matching. When the presented scaling methods are applied to a matrix, the entries in "*" blocks will tend to zero (the case of S is well documented [29]). Furthermore, the row sums of the blocks of H will be a multiple of the column sums in the same block; a similar statement holds for V ; finally S will be doubly stochastic. That is, the scaling algorithms

applied to bipartite graphs without perfect matchings will zero out the entries in the irrelevant parts and identify the entries that can be put into a maximum cardinality matching.

4 Experiments

The experiments were carried out on a machine equipped with two Intel Sandybridge-EP CPUs clocked at 2.00Ghz and 256GB of memory split across the two NUMA domains. Each CPU has eight-cores (16 cores in total) and HyperThreading is enabled. Each core has its own 32kB L1 cache and 256kB L2 cache. The 8 cores on a CPU share a 20MB L3 cache. The machine runs 64-bit Debian with Linux 2.6.39-bpo.2-amd64. All the codes are compiled with gcc 4.4.5 with the -O2 optimization flag. All algorithms are implemented using C and OpenMP parallelism. The (dynamic,512) OpenMP scheduling policy is employed while running all the algorithms except KARPSSIPERMT for which we used (guided). Parallel runs are performed with 2, 4, 8, 16 threads.

4.1 Experimental verification of theoretical results

4.1.1 Matching quality

We investigate the matching quality of the proposed heuristics on all square, fully indecomposable matrices from the UFL Sparse Matrix Collection [7] having at least 1000 non-empty rows/columns and at most 20000000 nonzeros. For all but 37 of these matrices (there were 743 of them), the quality guarantees 0.632 and 0.866 were surpassed with 10 iterations of the scaling method. Making 10 more scaling iterations smoothed out those 37 problematic instances.

4.1.2 Comparisons with KARPSSIPER

Next, we analyze the performance of the proposed heuristics with respect to KS on a matrix class which we designed as a bad case for KS. Let \mathbf{A} be an $n \times n$ matrix, R_1 (C_1) be the set of \mathbf{A} 's first $n/2$ rows (columns), and R_2 (C_2) be the set of \mathbf{A} 's last $n/2$ rows (columns). As Figure 2 shows, \mathbf{A} has a full $R_1 \times C_1$ block and an empty $R_2 \times C_2$ block. The last $k \ll n$ rows and columns of R_1 and C_1 , respectively, are full. Each of the blocks $R_1 \times C_2$ and $R_2 \times C_1$ has a nonzero diagonal. Those diagonals form a perfect matching when combined. In the sequel, a matrix whose corresponding bipartite graph has a perfect matching will be called *full-sprank*, and *sprank-deficient* otherwise.

When $k \leq 1$, the KS heuristic consumes the whole graph during Phase 1 and finds a maximum cardinality matching. When $k > 1$, Phase 1 immediately ends, since there is no degree-one vertex. In Phase 2, the first edge (nonzero) consumed by KS is selected from a uniform distribution over the nonzeros whose corresponding rows and columns are still unmatched. Since the block $R_1 \times C_1$ is full, it is more likely that the nonzero will be chosen from this block. Thus, a row in R_1 will be matched with a column in C_1 , which is a bad decision since the block $R_2 \times C_2$ is completely empty. Hence, we expect a decrease on the performance of KS as k increases. On the other hand the probability that TWOSIDEDMATCH chooses an edge from that block goes to zero, as those entries cannot be in a perfect matching.

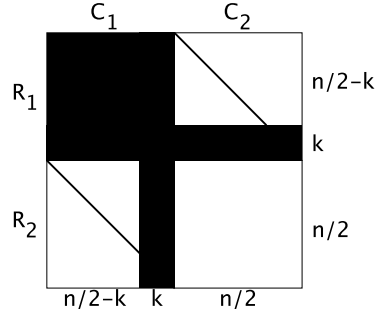


Figure 2: A generic full-sprank matrix structure that is bad for KS.

k	KARP SIPSER	number of iterations							
		0		1		5		10	
		Qual.	Err.	Qual.	Err.	Qual.	Err.	Qual.	Err.
2	0.782	0.522	13.853	0.557	3.463	0.989	0.578	0.999	
4	0.704	0.489	11.257	0.516	3.856	0.980	0.604	0.997	
8	0.707	0.466	8.653	0.487	4.345	0.946	0.648	0.996	
16	0.685	0.448	6.373	0.458	4.683	0.885	0.725	0.990	
32	0.670	0.447	4.555	0.453	4.428	0.748	0.867	0.980	

Table 1: Quality comparison (minimum of 10 executions for each instance) of the KS heuristic and TWOSIDEDMATCH on matrices described in Fig. 2 with $n = 3, 200$ and $k \in \{2, 4, 8, 16, 32\}$.

The results of the experiments are in Table 1. The first column shows the k value. Then the *matching quality* obtained by KS, and by TWOSIDEDMATCH with different number of scaling iterations (0, 1, 5, 10), as well as the scaling error are given. The scaling error is the maximum difference between 1 and each row/column sum of the scaled matrix (for 0 iterations it is equal to $n - 1$ for all cases). The quality of a matching is computed by dividing its cardinality to the maximum one, which is $n = 3200$ for these experiments. To obtain the values in each cell of the table, we run the programs 10 times and give the minimum quality (as we are investigating the worst-case behavior). The highest variance for KS and TWOSIDEDMATCH were (up to four significant digits) 0.0041 and 0.0001, respectively. As expected, when k increases, the KS heuristic performs worse, and the matching quality drops to 0.67 for $k = 32$. TWOSIDEDMATCH's performance increases with the number of scaling iterations. As the experiment shows, only 5 scaling iterations are sufficient to make the proposed two-sided matching heuristic significantly better than KS. However, this number is not enough to reach 0.866 for the matrix with $k = 32$. On this matrix, with 10 iterations, only 2% of the rows/columns remain unmatched.

4.1.3 Matching quality on bipartite graphs without perfect matchings

We analyze the proposed heuristics on a class of random sprank-deficient square ($n = 100000$) and rectangular ($m = 100000$ and $n = 120000$) matrices with a uniform nonzero distribution (two more sprank-deficient matrices are used in the scalability tests as well). These matrices are generated by MATLAB's `sprand`

d	iter	sprank	ONE SIDED MATCH	TWO SIDED MATCH	d	iter	sprank	ONE SIDED MATCH	TWO SIDED MATCH
2	0	78,225	0.770	0.912	4	0	97,787	0.644	0.838
2	1	78,225	0.797	0.917	4	1	97,787	0.673	0.848
2	5	78,225	0.850	0.939	4	5	97,787	0.719	0.873
2	10	78,225	0.879	0.954	4	10	97,787	0.740	0.886
3	0	92,786	0.673	0.851	5	0	99,223	0.635	0.840
3	1	92,786	0.703	0.857	5	1	99,223	0.662	0.851
3	5	92,786	0.756	0.884	5	5	99,223	0.701	0.873
3	10	92,786	0.784	0.902	5	10	99,223	0.716	0.882

Table 2: Matching qualities of the proposed heuristics on random matrices with $n = 100,000$ and uniform nonzero distribution. d : average number of nonzeros per row/column.

command (generating Erdős-Rényi random matrices [13]). The total nonzeros is set to be around $d \times n$ for $d \in \{2, 3, 4, 5\}$. Table 2 presents the results of this experiment with square matrices (rectangular case is not shown). As in the previous experiments, the matching qualities in the table is the minimum of 10 executions for the corresponding instances. As Table 2 shows, when the deficiency is high (correlated with small d), it is easier for our algorithms to approximate the maximum cardinality. However, when d gets larger, the algorithms require more scaling iterations. Even in this case, 5 iterations are sufficient to achieve the guaranteed qualities. In the rectangular case, the minimum quality achieved by `ONESIDEDMATCH` and `TWOSIDEDMATCH` were 0.753 and 0.930, respectively, with 5 scaling iterations.

4.2 `ONESIDEDMATCH` and `TWOSIDEDMATCH` in parallel

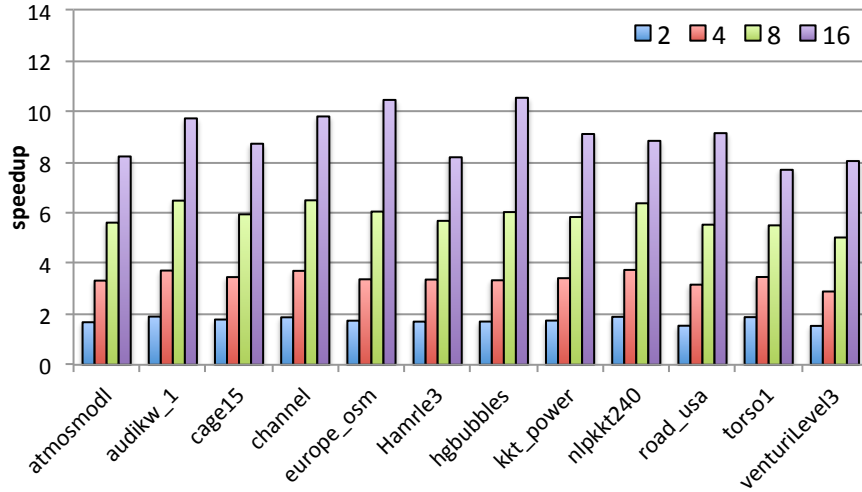
To analyze the scalability of the proposed heuristics in practice, we used 12 large bipartite graphs corresponding to real-life matrices from UFL collection arising in different application domains. The names `hugebubbles` and `channel` refer to the matrices `hugebubbles-00020` and `channel-500x100x100-b050`, respectively. The properties of the bipartite graphs are given in Table 3 along with the sequential running times (the running time of `ONESIDEDMATCH` includes that of `SCALESK`, and `TWOSIDEDMATCH` includes those of `SCALESK` and `KARPSIPSERMT`). All the executions in this experiment are repeated 20 times and the first five are ignored to avoid architecture-based variances. The times and speedup values are computed by using the geometric mean of the remaining 15 executions for each instance. No significant variances were observed among individual running times.

Figures 3a and 3b show the individual speedup values for `SCALESK` and the proposed matching heuristic `ONESIDEDMATCH`, respectively. When executed with 16 threads, `SCALESK` obtains a speedup value around 8 or more for all matrices. The maximum speedup of 10.6 is obtained for `hugebubbles`. The scalability of `ONESIDEDMATCH` is better. For 10 matrices, a speedup value around 10 or more is obtained. The maximum speedup of 11.4 is obtained for the matrix `europe_osm` with 16 threads.

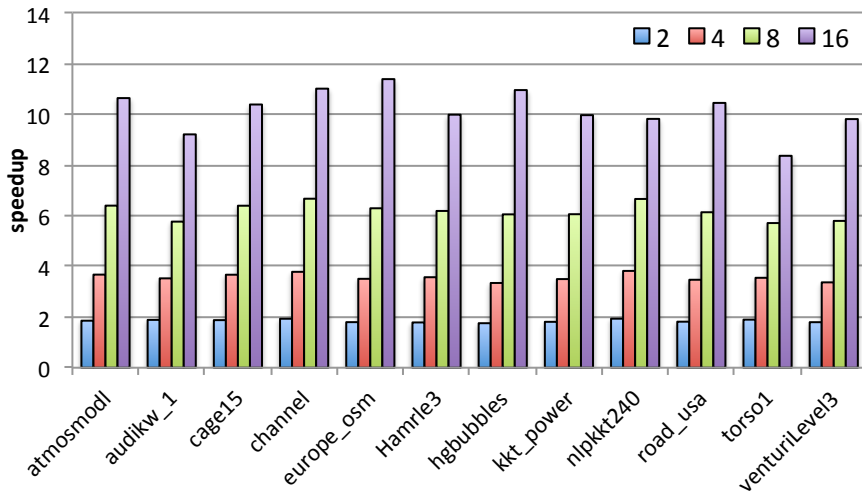
The structure of a matrix can affect the scalability. Both for `SCALESK` and `ONESIDEDMATCH`, the minimum speedups (7.7 and 8.4, respectively) are

Name	n	# of edges	Avg. deg.	$sprank/n$	Scaling error (number of iterations)				Execution times with single thread (secs)					
					1	5	10	ONE		KARP		TWO		
								SK	SCALE	MATCH	SIDED	MT	SIPSER	MATCH
atmosmod1	1,489,752	10,319,760	6.9	1.00	0.06	0.01	0.00	0.037	0.095	0.236	0.273	0.273	0.273	0.273
audikv_1	943,695	77,651,847	82.2	1.00	0.17	0.02	0.01	0.188	0.364	0.452	0.640	0.640	0.640	0.640
cage15	5,154,859	99,199,551	19.2	1.00	0.18	0.03	0.02	0.306	0.627	1.373	1.679	1.679	1.679	1.679
channel	4,802,000	85,362,744	17.8	1.00	0.10	0.01	0.00	0.274	0.537	0.937	1.211	1.211	1.211	1.211
europa_osm	50,912,018	108,109,320	2.1	0.99	8.43	8.00	8.00	1.625	3.599	9.643	11.270	11.270	11.270	11.270
Hamr1e3	1,447,360	5,514,242	3.8	1.00	0.99	0.37	0.15	0.028	0.067	0.196	0.223	0.223	0.223	0.223
hugebubbles	21,198,119	63,580,358	3.0	1.00	0.33	0.17	0.11	1.303	2.840	7.942	9.251	9.251	9.251	9.251
kkt_power	2,063,494	12,771,361	6.2	1.00	13.83	1.27	1.00	0.063	0.132	0.339	0.401	0.401	0.401	0.401
nlpkkt240	27,993,600	760,648,352	26.7	1.00	2.23	0.99	0.71	1.864	3.704	6.642	8.481	8.481	8.481	8.481
road_usa	23,947,347	57,708,624	2.4	0.95	6.08	6.00	6.00	0.712	1.581	4.237	4.949	4.949	4.949	4.949
torso1	116,158	8,516,500	73.3	1.00	0.13	0.02	0.01	0.021	0.040	0.045	0.066	0.066	0.066	0.066
venturiLevel13	4,026,819	16,108,474	4.0	1.00	0.23	0.05	0.03	0.094	0.239	0.672	0.766	0.766	0.766	0.766

Table 3: sprank: the maximum cardinality of a matching; Scaling error: the maximum difference between one and column sums; Sequential execution times of SCALESK (one iteration), ONESIDEDMATCH, KARPSIPSERMT, and TWOSIDEDMATCH.



(a) SCALESK



(b) ONESIDEDMATCH

Figure 3: Speedups for SCALESK (left) and ONESIDEDMATCH (right) with a single scaling iteration.

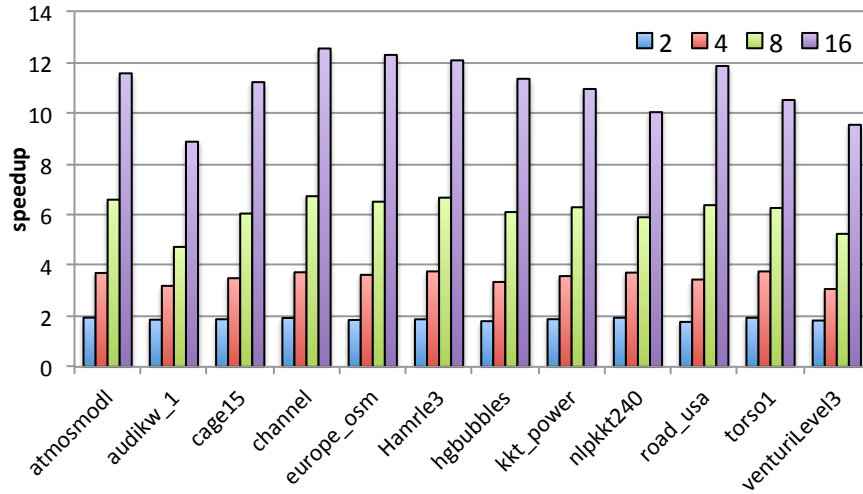
obtained on `torso1`. As Table 3 shows, `torso1` and `audikw_1` are the two smallest matrices with less than 10^6 rows and columns. As Figure 3b shows, `ONESIDEDMATCH` obtains its worst speedups on these matrices. This is not a coincidence. When the variance of the number of nonzeros per row is high, the effects of load imbalance can be significant. For `torso1` and `audikw_1`, the variances (computed in Matlab) are 176056 and 1802, respectively. Among the 12 matrices, the next largest variance is 42 (`kkt_power`). Although we conducted a set of preliminary experiments on OpenMP scheduling policies, we did not fine tune it to have the best one. A different policy may work better especially for these matrices with a high variance on the number of nonzeros per row.

We repeated the scalability experiment for `KARPSIPSERMT` and `TWOSIDEDMATCH` on the same matrix set. The results can be seen in Figures 4a and 4b, respectively. On average (geometric mean), `KARPSIPSERMT` obtains a speedup of 11.1 with 16 threads. The maximum speedup of 12.6 is obtained on the matrix `channel`. These results show that the proposed `KARPSIPSERMT` is highly scalable on the graphs generated in `TWOSIDEDMATCH` without any quality loss with the increasing thread counts (see [4] for an efficient but inexact parallel KS implementation).

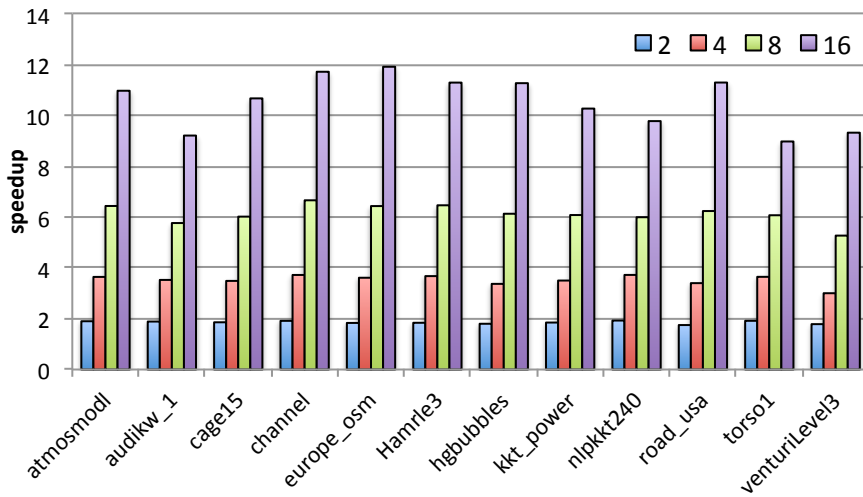
With 16 threads, `TWOSIDEDMATCH` obtains a speedup value of 10.6 on the average. Compared to the average of `ONESIDEDMATCH` (10.1), it is slightly better. However, in a sequential setting, `TWOSIDEDMATCH` is 2.6 times slower. To further compare these two heuristics, we present Figures 5a and 5b that show the qualities on our test matrices. The quality guarantees are achieved with only 5 iterations for almost all the cases except `TWOSIDEDMATCH` on `n1pkkt240` which required 15 scaling iterations. Even with a single iteration, the quality of `TWOSIDEDMATCH` is more than 0.86 for all matrices. Only for two among them, the quality is between 0.863 and 0.866. The results are similar for `ONESIDEDMATCH`. However, even with 10 scaling iterations, `ONESIDEDMATCH` cannot achieve a quality of 0.80 on any of the matrices. We conclude that `ONESIDEDMATCH` is faster, `TWOSIDEDMATCH` has a better quality guarantee, and both demonstrate good speedups.

5 Conclusion

We proposed two heuristics for the bipartite maximum cardinality matching problem. The first one, `ONESIDEDMATCH`, is shown to have an approximation guarantee no smaller than $1 - 1/e \approx 0.632$. The second heuristic, `TWOSIDEDMATCH`, is conjectured to have an approximation guarantee no smaller than 0.866. Both algorithms use well-known methods to scale the sparse matrix associated with the given bipartite graph to a doubly stochastic form whose entries are used as the probability density functions to randomly select a subset of the edges of the input graph. `ONESIDEDMATCH` selects exactly n edges to construct a subgraph in which a matching of the guaranteed cardinality is identified with virtually no overhead, both in sequential and parallel execution. `TWOSIDEDMATCH` selects around $2n$ edges and then runs the Karp-Sipser (KS) heuristic as an exact algorithm on the selected subgraph to obtain a matching of conjectured cardinality. The subgraphs are analyzed to develop a specialized KS algorithm for efficient parallelization. All theoretical investigations are first

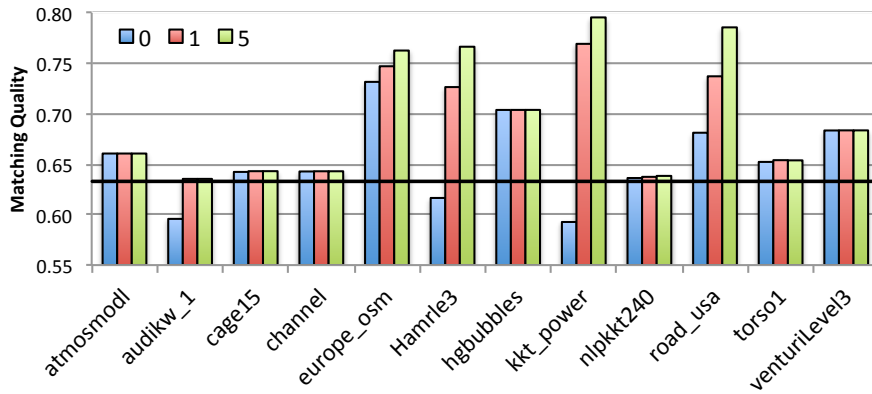


(a) KARPSSIPSERMT

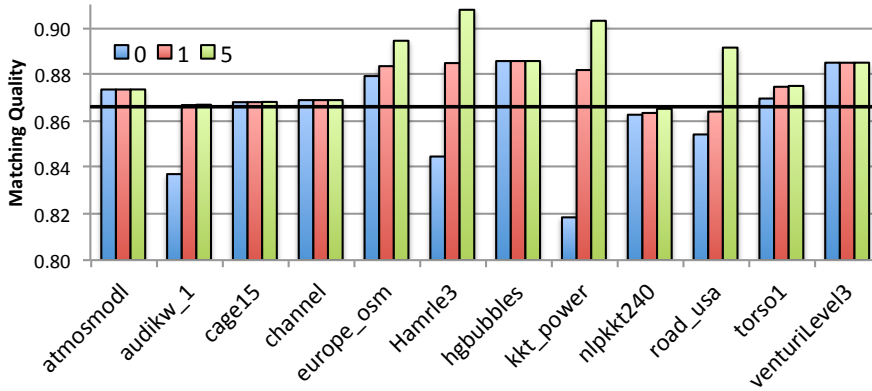


(b) TWOSIDEDMATCH

Figure 4: Speedups for KARPSSIPSERMT and TWOSIDEDMATCH with a single scaling iteration.



(a) ONE SIDED MATCH



(b) TWO SIDED MATCH

Figure 5: Matching qualities of ONE SIDED MATCH (left) and TWO SIDED MATCH (right). The horizontal lines are at 0.866 and 0.632, respectively, which are the approximation guarantees for the heuristics (conjectured for TWO SIDED MATCH).

performed assuming bipartite graphs with perfect matchings. Then, theoretical arguments and experimental evidence are provided to extend the results to cover other cases and validate the applicability and practicality of the proposed heuristics in general settings. Parallel performance is analyzed on a shared memory parallel computer with up to 16 threads and speedups beyond 10 fold are demonstrated.

We investigate the adaptation of the proposed heuristics for undirected graphs.

Acknowledgements

Fanny Dufossé is supported by the foundation STAE, Toulouse, France.

Bibliography

- [1] P. R. Amestoy, I. S. Duff, D. Ruiz, and B. Uçar. A parallel matrix scaling algorithm. In J. M. Palma, P. R. Amestoy, M. Daydé, M. Mattoso, and J. C. Lopes, editors, *High Performance Computing for Computational Science - VECPAR 2008: 8th International Conference*, volume 5336 of *LNCS*, pages 301–313. Springer Berlin Heidelberg, 2008.
- [2] J. Aronson, M. Dyer, A. Frieze, and S. Suen. Randomized greedy matching II. *Random Struct. Algor.*, 6(1):55–73, 1995.
- [3] J. Aronson, A. Frieze, and B. G. Pittel. Maximum matchings in sparse random graphs: Karp-Sipser revisited. *Random Struct. Algor.*, 12(2):111–177, 1998.
- [4] A. Azad, M. Halappanavar, S. Rajamanickam, E. G. Boman, A. Khan, and A. Pothén. Multithreaded algorithms for maximum matching in bipartite graphs. In *IEEE 26th International Parallel Distributed Processing Symposium (IPDPS)*, pages 860–872, Shanghai, China, 2012.
- [5] Ü. V. Çatalyürek, M. Deveci, K. Kaya, and B. Uçar. Multithreaded clustering for multi-level hypergraph partitioning. In *26th IEEE International Parallel and Distributed Processing Symposium (IPDPS)*, pages 848–859, Shanghai, China, 2012.
- [6] Ü. V. Çatalyürek, K. Kaya, and B. Uçar. On shared-memory parallelization of a sparse matrix scaling algorithm. In *2012 41st International Conference on Parallel Processing (ICPP)*, pages 68–77, Pittsburgh, PA, USA, 2012.
- [7] T. A. Davis and Y. Hu. The University of Florida sparse matrix collection. *ACM T. Math. Software*, 38(1):1:1–1:25, 2011. ISSN 0098-3500.
- [8] M. Deveci, K. Kaya, Ü. V. Çatalyürek, and B. Uçar. A push-relabel-based maximum cardinality matching algorithm on GPUs. In *42nd International Conference on Parallel Processing (ICPP)*, Lyon, France, 2013.
- [9] M. Deveci, K. Kaya, B. Uçar, and Ü. V. Çatalyürek. GPU accelerated maximum cardinality matching algorithms for bipartite graphs. In F. Wolf, B. Mohr, and D. Mey, editors, *Euro-Par 2013 Parallel Processing*, volume 8097 of *LNCS*, pages 850–861. Springer Berlin Heidelberg, 2013.
- [10] I. S. Duff, K. Kaya, and B. Uçar. Design, implementation, and analysis of maximum transversal algorithms. *ACM T. Math. Software*, 38(2):13:1–13:31, 2011.
- [11] A. L. Dulmage and N. S. Mendelsohn. Coverings of bipartite graphs. *Can. J. Math.*, 10:517–534, 1958.
- [12] M. E. Dyer and A. M. Frieze. Randomized greedy matching. *Random Struct. Algor.*, 2(1):29–45, 1991.
- [13] P. Erdős and A. Rényi. On random matrices. *Publications of the Mathematical Institute of the Hungarian Academy of Sciences*, 8(3):455–461, 1964.

-
- [14] B. Fagginger Auer and R. Bisseling. A GPU algorithm for greedy graph matching. In *Facing the Multicore Challenge II*, LNCS, pages 108–119. Springer-Verlag Berlin, 2012.
- [15] M. Halappanavar, J. Feo, O. Villa, A. Tumeo, and A. Pothen. Approximate weighted matching on emerging manycore and multithreaded architectures. *Int. J. High Perform. C.*, 26(4):413–430, 2012.
- [16] J. E. Hopcroft and R. M. Karp. An $n^{5/2}$ algorithm for maximum matchings in bipartite graphs. *SIAM J. Comput.*, 2(4):225–231, 1973.
- [17] M. Karoński and B. Pittel. Existence of a perfect matching in a random $(1+e^{-1})$ -out bipartite graph. *J. Comb. Theory Ser. B*, 88:1–16, May 2003.
- [18] R. M. Karp and M. Sipser. Maximum matching in sparse random graphs. In *22nd Annual IEEE Symposium on Foundations of Computer Science (FOCS)*, pages 364–375, Nashville, TN, USA, 1981.
- [19] R. M. Karp, U. V. Vazirani, and V. V. Vazirani. An optimal algorithm for on-line bipartite matching. In *22nd annual ACM symposium on Theory of computing (STOC)*, pages 352–358, Baltimore, MD, USA, 1990.
- [20] K. Kaya, J. Langguth, F. Manne, and B. Uçar. Push-relabel based algorithms for the maximum transversal problem. *Comput. Oper. Res.*, 40(5):1266–1275, 2013.
- [21] P. A. Knight. The Sinkhorn–Knopp algorithm: Convergence and applications. *SIAM J. Matrix Anal. A.*, 30(1):261–275, 2008.
- [22] P. A. Knight, D. Ruiz, and B. Uçar. A symmetry preserving algorithm for matrix scaling. Rapport de recherche RR-7552, INRIA, Feb. 2011.
- [23] J. Langguth, F. Manne, and P. Sanders. Heuristic initialization for bipartite matching problems. *J. Exp. Algorithmics*, 15:1.1–1.22, 2010.
- [24] A. Meir and J. W. Moon. The expected node-independence number of random trees. *Indagationes Mathematicae*, 76:335–341, 1973.
- [25] M. Poloczek and M. Szegedy. Randomized greedy algorithms for the maximum matching problem with new analysis. In *IEEE 53rd Annual Sym. on Foundations of Computer Science (FOCS)*, pages 708–717, New Brunswick, NJ, USA, 2012.
- [26] A. Pothen. *Sparse null bases and marriage theorems*. PhD thesis, Dept. Computer Science, Cornell Univ., Ithaca, New York, 1984.
- [27] A. Pothen and C.-J. Fan. Computing the block triangular form of a sparse matrix. *ACM T. Math. Software*, 16(4):303–324, 1990.
- [28] D. Ruiz. A scaling algorithm to equilibrate both row and column norms in matrices. Technical Report TR-2001-034, RAL, 2001.
- [29] R. Sinkhorn and P. Knopp. Concerning nonnegative matrices and doubly stochastic matrices. *Pacific J. Math.*, 21:343–348, 1967.
- [30] D. W. Walkup. Matchings in random regular bipartite digraphs. *Discrete Math.*, 31(1):59–64, 1980.



**RESEARCH CENTRE
GRENOBLE – RHÔNE-ALPES**

Inovallée
655 avenue de l'Europe Montbonnot
38334 Saint Ismier Cedex

Publisher
Inria
Domaine de Voluceau - Rocquencourt
BP 105 - 78153 Le Chesnay Cedex
inria.fr

ISSN 0249-6399