



**HAL**  
open science

# Hemodynamic-informed parcellation of fMRI data in a Joint Detection Estimation framework

Lotfi Chaari, Florence Forbes, Thomas Vincent, Philippe Ciuciu

► **To cite this version:**

Lotfi Chaari, Florence Forbes, Thomas Vincent, Philippe Ciuciu. Hemodynamic-informed parcellation of fMRI data in a Joint Detection Estimation framework. MICCAI 2012 - 15th International Conference on Medical Image Computing and Computer-Assisted Intervention, Oct 2012, Nice, France. pp.180-188, 10.1007/978-3-642-33454-2\_23 . hal-00859388

**HAL Id: hal-00859388**

**<https://inria.hal.science/hal-00859388v1>**

Submitted on 7 Sep 2013

**HAL** is a multi-disciplinary open access archive for the deposit and dissemination of scientific research documents, whether they are published or not. The documents may come from teaching and research institutions in France or abroad, or from public or private research centers.

L'archive ouverte pluridisciplinaire **HAL**, est destinée au dépôt et à la diffusion de documents scientifiques de niveau recherche, publiés ou non, émanant des établissements d'enseignement et de recherche français ou étrangers, des laboratoires publics ou privés.

# Hemodynamic-informed parcellation of fMRI data in a Joint Detection Estimation framework

L. Chaari<sup>1</sup>, F. Forbes<sup>1</sup>, T. Vincent<sup>1</sup> and P. Ciuciu<sup>2</sup>

<sup>1</sup> Mistis team, Inria Grenoble and LJK, France

<sup>2</sup> CEA/DSV/I<sup>2</sup>BM/Neurospin, LNAO, Gif-Sur-Yvette, France

**Abstract.** Identifying brain hemodynamics in event-related functional MRI (fMRI) data is a crucial issue to disentangle the vascular response from the neuronal activity in the BOLD signal. This question is usually addressed by estimating the so-called Hemodynamic Response Function (HRF). Voxelwise or region-/parcelwise inference schemes have been proposed to achieve this goal but so far all known contributions commit to pre-specified spatial supports for the hemodynamic territories by defining these supports either as individual voxels or a priori fixed brain parcels. In this paper, we introduce a Joint Parcellation-Detection-Estimation (JPDE) procedure that incorporates an adaptive parcel identification step based upon local hemodynamic properties. Efficient inference of both evoked activity, HRF shapes and *supports* is then achieved using variational approximations. Validation on synthetic and real fMRI data demonstrate the JPDE performance over standard detection estimation schemes and suggest it as a new brain exploration tool.

## 1 Introduction

Within-subject analysis in event-related BOLD fMRI mainly relies on (i) *detection* of evoked activity to localize which parts of the brain are activated by a given stimulus type, and on (ii) *estimation* of the dynamics of the brain response also known as the Hemodynamic Response Function (HRF). Most approaches to detect neural activity rely on a single *a priori* HRF model for the whole brain although there has been evidence that this response can vary between cortical regions and across subjects [8] and that an accurate HRF model may significantly improve detection performance. To capture this variability, robust HRF estimation is necessary which can be achieved only in voxels or regions that elicit an evoked response to a given stimulus [9]. So far, many works have addressed this issue either by considering linear or nonlinear HRF models [1, 4, 14], parametric, semi-parametric or non-parametric (*i.e.* FIR models) descriptions [6, 7, 16], and by performing univariate (voxelwise) [4, 16], multivariate (regionwise) [10, 13] or even multiscale, *i.e.* spatially adaptive inference [15]. However, to the best of our knowledge, all these existing works assume the spatial support of the HRFs, either defined at the voxel or region-level, to be pre-specified. The proposed methodology takes place in the Joint Detection-Estimation (JDE) framework introduced in [10] and extended in [3, 13] to account for spatial correlation between

voxels. Standard JDE-based inference requires a pre-specified decomposition of the brain into functionally homogeneous parcels (groups of connected voxels) but with no guarantee of their optimality. These parcels should be small enough to guarantee the invariance of the HRF within each parcel but large enough to contain reliable information for its inference [12]. Here, we introduce the concept of *hemodynamic territory* as a set of parcels which share a common HRF pattern. To determine such sets, we incorporate an additional layer in the JDE hierarchy, namely an adaptive parcel identification step based upon local hemodynamic properties. In this novel Joint Parcellation-Detection-Estimation (JPDE) model (Section 2), for all the parcels of a given territory, HRFs are voxelwise but defined as local stochastic perturbations of the same HRF pattern. Then, hemodynamics estimation reduces to the identification of a limited number (say  $K$ ) of such HRF patterns and parcel identification reformulates as a clustering problem where each voxel is assigned an HRF group among  $K$ . The HRF group assignment variables are governed by a hidden Markov Model to enforce spatial correlation, *i.e.* favor group assignments to vary smoothly. Finally, the overall scheme iteratively identifies hemodynamic territories as pairs of one HRF pattern and a set of parcels assigned to the corresponding HRF group.

The proposed approach thus makes the JDE framework fully adaptive and more flexible. It is based on a variational Expectation Maximization (EM) algorithm (Section 3) to derive estimates of the HRF patterns, the response amplitude, the corresponding labels (activating/non-activating voxels) and the HRF group labels. Results on artificial and real fMRI data demonstrate that the JPDE approach outperforms the standard JDE (see Section 4).

## 2 A joint Parcellation-Detection-Estimation model

### 2.1 Observed and missing variables

We extend the parcel-based JDE model of [10, 13] to a whole-brain one, with a set of voxels denoted by  $\mathcal{P}$ , and recast it in a missing data framework. At voxel  $j$ , the fMRI time series  $\mathbf{y}_j$  is measured at times  $\{t_n, n = 1:N\}$ , where  $t_n = nTR$ ,  $N$  being the number of scans and  $TR$  the time of repetition. The number of different stimulus types or experimental conditions is  $M$ . At each voxel  $j$ , we assume a voxel dependent HRF  $\mathbf{h}_j \in \mathbb{R}^{D+1}$  with  $\mathbf{H} = \{\mathbf{h}_j, j \in \mathcal{P}\}$  the set of all HRFs. Each  $\mathbf{h}_j$  is associated with a HRF group among  $K$ . These groups or HRF classes are specified by a set of hidden labels  $\mathbf{Z} = \{z_j, j \in \mathcal{P}\}$  where  $z_j \in \{1 : K\}$  and  $z_j = k$  means that voxel  $j$  belongs to the  $k$ -th group. An estimation of  $\mathbf{Z}$  corresponds then to a partition of the brain into  $K$  hemodynamic territories whose connected components define a parcellation. The link to the observed BOLD data is specified via the following forward model:

$$\forall j \in \mathcal{P}, \quad \mathbf{y}_j = \sum_{m=1}^M a_j^m \mathbf{X}_m \mathbf{h}_j + \mathbf{P} \ell_j + \boldsymbol{\varepsilon}_j, \quad (1)$$

where the binary matrix  $\mathbf{X}_m = \{x_m^{n-d\Delta t}, n = 1 : N, d = 0 : D\}$  is of size  $N \times (D + 1)$  and provides information on the stimulus occurrences for the

$m$ -th experimental condition,  $\Delta t < TR$  being the sampling period of the unknown HRFs. The scalar  $a_j^m$ 's are weights that model the transition between stimulations and the neuro-vascular response. They are generally referred to as Neural Response Levels (NRL). We denote by  $\mathbf{A} = \{\mathbf{a}^m, m = 1 : M\}$  with  $\mathbf{a}^m = \{a_j^m, j \in \mathcal{P}\}$  the response amplitudes,  $a_j^m$  being the amplitude at voxel  $j$  for condition  $m$ . Similarly to the HRF's, each NRL is assumed to be in one of  $I$  groups specified by activation class assignment variables  $\mathbf{Q} = \{\mathbf{q}^m, m = 1 : M\}$  where  $\mathbf{q}^m = \{q_j^m, j \in \mathcal{P}\}$  and  $q_j^m$  represents the *activation class* at voxel  $j$  for condition  $m$ . The number of classes considered here is  $I = 2$  for activated ( $i = 2$ ) and non-activated ( $i = 1$ ) voxels. Finally, the rest of the signal is made of vector  $\mathbf{P}\ell_j$ , which corresponds to low frequency drifts with  $\mathbf{P}$  a  $N \times O$  matrix,  $\ell_j \in \mathbb{R}^O$  a vector to be estimated and  $\mathbf{L} = \{\ell_j, j \in \mathcal{P}\}$ . Regarding the observation noise, the  $\varepsilon_j$ 's are assumed to be independent with  $\varepsilon_j \sim \mathcal{N}(0, \mathbf{\Gamma}_j^{-1})$ . The set of all unknown precision matrices is denoted by  $\mathbf{\Gamma} = \{\mathbf{\Gamma}_j, j \in \mathcal{P}\}$ .

## 2.2 Hierarchical model of the complete data distribution

With standard additional assumptions [3, 10, 13], the joint model distribution writes  $p(\mathbf{Y}, \mathbf{A}, \mathbf{H}, \mathbf{Q}, \mathbf{Z}) = p(\mathbf{Y} | \mathbf{A}, \mathbf{H}) p(\mathbf{A} | \mathbf{Q}) p(\mathbf{Q}) p(\mathbf{H} | \mathbf{Z}) p(\mathbf{Z})$ .

**Likelihood.** Assuming spatial independence of the noise, the likelihood reads  $p(\mathbf{Y} | \mathbf{A}, \mathbf{H}; \mathbf{L}, \mathbf{\Gamma}) \propto \prod_{j \in \mathcal{P}} \mathcal{N}(\mathbf{y}_j; \sum_{m=1}^M a_j^m \mathbf{X}_m \mathbf{h}_j + \mathbf{P}\ell_j, \mathbf{\Gamma}_j^{-1})$ . Various possibilities for the  $\mathbf{\Gamma}_j$ 's include standard white and autoregressive noise models [10].

**Neuronal response levels.** The NRLs are assumed to be statistically independent across conditions:  $p(\mathbf{A}; \boldsymbol{\theta}_a) = \prod_{m=1}^M p(\mathbf{a}^m; \boldsymbol{\theta}_m)$  where  $\boldsymbol{\theta}_a = \{\boldsymbol{\theta}_m, m = 1 : M\}$  and  $\boldsymbol{\theta}_m$  gathers the parameters for the  $m$ -th condition. A mixture model is then adopted by using the allocation variables  $q_j^m$  to segregate non-activated voxels ( $q_j^m = 1$ ) from activated ones ( $q_j^m = 2$ ). For the  $m$ -th condition, and conditionally to the assignment variables  $\mathbf{q}^m$ , the NRLs are assumed to be independent:  $p(\mathbf{a}^m | \mathbf{q}^m; \boldsymbol{\theta}_m) = \prod_{j \in \mathcal{P}} p(a_j^m | q_j^m; \boldsymbol{\theta}_m)$  with  $p(a_j^m | q_j^m = i; \boldsymbol{\theta}_m) \sim \mathcal{N}(\mu_{mi}, v_{mi})$  and  $\boldsymbol{\theta}_m = \{\mu_{mi}, v_{mi}, i = 1, 2\}$ . We also denote  $\boldsymbol{\mu} = \{\mu_{mi}, m = 1 : M, i = 1, 2\}$  and  $\mathbf{v} = \{v_{mi}, m = 1 : M, i = 1, 2\}$ . For non-activating voxels ( $i = 1$ ) we set for all  $m$ ,  $\mu_{m1} = 0$ . The other parameters are unknown and have to be estimated.

**Activation classes.** We assume prior independence between the  $M$  experimental conditions regarding the activation class assignments:  $p(\mathbf{Q}) = \prod_{m=1}^M p(\mathbf{q}^m; \beta_m)$ . Also, the density  $p(\mathbf{q}^m; \beta_m) \propto \exp(\beta_m U(\mathbf{q}^m))$  defines a spatial Markov prior, namely an Ising model with interaction parameter  $\beta_m$  and energy function  $U(\mathbf{q}^m) = \sum_{j \sim j'} \delta(q_j^m, q_{j'}^m)$  where  $\forall (a, b) \in \mathbb{R}^2$ ,  $\delta(a, b) = 1$  if  $a = b$  and 0 otherwise. The notation  $j \sim j'$  means that the summation is over all neighboring voxels (in a 6-connectivity 3D neighborhood). The unknown parameters are denoted by  $\boldsymbol{\beta} = \{\beta_m, m = 1 : M\}$ .

**HRF groups.** In order to promote parcellation connectivity, we also introduce here a spatial Markov prior, namely a  $K$ -class Potts model with interaction parameter  $\beta_z$ :  $p(\mathbf{Z}; \beta_z) \propto \exp(\beta_z U(\mathbf{Z}))$ , where the global energy reads  $U(\mathbf{Z}) = \sum_{j \sim j'} \delta(z_j, z_{j'})$ , i.e. neighboring voxels tend to belong to the same HRF group.

**HRF patterns.** In contrast to [3, 10, 13] where a unique HRF shape is con-

sidered for a whole parcel, the distribution of  $\mathbf{h}_j$  is expressed, for each voxel  $j$ , conditionally to the HRF group variable  $z_j$ :  $p(\mathbf{H}|\mathbf{Z}) = \prod_{j \in \mathcal{P}} p(\mathbf{h}_j | z_j)$  with  $p(\mathbf{h}_j | z_j = k) \sim \mathcal{N}(\bar{\mathbf{h}}_k, \bar{\boldsymbol{\Sigma}}_k)$ . Here, the mean vector  $\bar{\mathbf{h}}_k$  can be seen as the HRF pattern for group  $k$  and  $\bar{\boldsymbol{\Sigma}}_k = v_h I_D$  regulates the stochastic perturbations around  $\bar{\mathbf{h}}_k$ . In addition, smooth  $\bar{\mathbf{h}}_k$ 's are favored by controlling their second order derivatives:  $\bar{\mathbf{h}}_k \sim \mathcal{N}(\mathbf{0}, \sigma_h^2 \mathbf{R})$  with  $\mathbf{R} = (\Delta t)^4 (\mathbf{D}_2^t \mathbf{D}_2)^{-1}$  where  $\mathbf{D}_2$  is the second-order finite difference matrix and  $\sigma_h^2$  is a parameter to be estimated or fixed. Moreover,  $\bar{\mathbf{h}}_{k0} = \bar{\mathbf{h}}_{kD\Delta t} = 0$  as in [3, 10, 13]. The parameters are then denoted by  $\boldsymbol{\Theta} = \{\boldsymbol{\Gamma}, \mathbf{L}, \boldsymbol{\mu}, \mathbf{v}, \boldsymbol{\beta}, \beta_z, \sigma_h^2, (\bar{\mathbf{h}}_k, \bar{\boldsymbol{\Sigma}}_k)_{1 \leq k \leq K}\}$  and belong to a set  $\underline{\boldsymbol{\Theta}}$ .

### 3 Variational EM estimation

We propose to use an EM framework to deal with the missing data  $\mathbf{A} \in \mathcal{A}$ ,  $\mathbf{H} \in \mathcal{H}$ ,  $\mathbf{Q} \in \mathcal{Q}$ ,  $\mathbf{Z} \in \mathcal{Z}$ . We resort to an iterative variational EM procedure as in [3]. At each iteration ( $r$ ), with  $\boldsymbol{\Theta}^{(r-1)}$  denoting the current parameter values, the intractable posterior  $p(\mathbf{A}, \mathbf{H}, \mathbf{Q}, \mathbf{Z} | \mathbf{Y}, \boldsymbol{\Theta}^{(r-1)})$  is approximated as a product of four pdfs,  $\tilde{p}_H^{(r)}$ ,  $\tilde{p}_A^{(r)}$ ,  $\tilde{p}_Q^{(r)}$  and  $\tilde{p}_Z^{(r)}$  respectively on  $\mathcal{A}$ ,  $\mathcal{H}$ ,  $\mathcal{Q}$  and  $\mathcal{Z}$ . Our E-step becomes then an approximate E-step, which is decomposed into four sub-steps that consist of updating the four pdfs above in turn. Compared to [3], this implies adding an E-sub-step for the HRF group assignments ( $\tilde{p}_Z^{(r)}$  updating) and specifying its impact on the other E-sub-steps. The **E-Q** sub-step ( $\tilde{p}_Q^{(r)}$  updating) is not actually impacted by the HRF groups addition and can be found in [3]. The **E-A** sub-step ( $\tilde{p}_A^{(r)}$  updating) is also very close to the one involved in [3]: similar updating formulas are obtained by replacing the HRF of [3] by voxel dependent HRFs. We thus only detail the **E-H** and **E-Z** steps. At iteration ( $r$ ), with current estimates  $\tilde{p}_A^{(r-1)}$ ,  $\tilde{p}_Z^{(r-1)}$  and  $\boldsymbol{\Theta}^{(r-1)}$ , we obtain:

$$\mathbf{E-H:} \tilde{p}_H^{(r)}(\mathbf{H}) \propto \exp\left(\mathbb{E}_{\tilde{p}_A^{(r-1)} \tilde{p}_Z^{(r-1)}}[\log p(\mathbf{H} | \mathbf{Y}, \mathbf{A}, \mathbf{Z}; \boldsymbol{\Theta}^{(r-1)})]\right) \quad (2)$$

$$\mathbf{E-Z:} \tilde{p}_Z^{(r)}(\mathbf{Z}) \propto \exp\left(\mathbb{E}_{\tilde{p}_H^{(r)}}[\log p(\mathbf{Z} | \mathbf{Y}, \mathbf{H}; \boldsymbol{\Theta}^{(r-1)})]\right), \quad (3)$$

where  $\mathbb{E}_{\tilde{p}}[\cdot]$  denotes the expectation with respect to  $\tilde{p}$ .

It follows from standard algebra that  $\tilde{p}_H^{(r)}$  and  $\tilde{p}_A^{(r-1)}$  are both Gaussian distributions:  $\tilde{p}_H^{(r)} = \prod_{j \in \mathcal{P}} \tilde{p}_{H_j}^{(r)}$  and  $\tilde{p}_A^{(r-1)} = \prod_{j \in \mathcal{P}} \tilde{p}_{A_j}^{(r-1)}$ , where  $\tilde{p}_{H_j}^{(r)} \sim \mathcal{N}(\mathbf{m}_{H_j}^{(r)}, \boldsymbol{\Sigma}_{H_j}^{(r)})$  and  $\tilde{p}_{A_j}^{(r-1)} \sim \mathcal{N}(\mathbf{m}_{A_j}^{(r-1)}, \boldsymbol{\Sigma}_{A_j}^{(r-1)})$ . More specifically, we obtain:

- **E-H step:** Compute  $\boldsymbol{\Sigma}_{H_j}^{(r)} = (\mathbf{V}_1 + \mathbf{V}_2)^{-1}$  and  $\mathbf{m}_{H_j}^{(r)} = \boldsymbol{\Sigma}_{H_j}^{(r)}(\mathbf{m}_1 + \mathbf{m}_2)$ , where  $\mathbf{V}_1 = \sum_{m, m'} \boldsymbol{\Sigma}_{A_j(m, m')}^{(r-1)} \mathbf{X}_m^t \boldsymbol{\Gamma}_j^{(r-1)} \mathbf{X}_{m'} + \tilde{\mathbf{S}}_j^t \boldsymbol{\Gamma}_j^{(r-1)} \tilde{\mathbf{S}}_j$ ,  $\mathbf{V}_2 = \sum_{k=1}^K \tilde{p}_{Z_j}(k)^{(r-1)} \bar{\boldsymbol{\Sigma}}_k^{(r-1)-1}$ ,  $\mathbf{m}_1 = \tilde{\mathbf{S}}_j^t \boldsymbol{\Gamma}_j^{(r-1)} (\mathbf{y}_j - \mathbf{P} \boldsymbol{\ell}_j^{(r-1)})$  and  $\mathbf{m}_2 = \sum_{k=1}^K \bar{\boldsymbol{\Sigma}}_k^{(r-1)-1} \tilde{p}_{Z_j}(k)^{(r-1)} \bar{\mathbf{h}}_k^{(r-1)}$ . Above,  $\tilde{\mathbf{S}}_j = \sum_{m=1}^M m_{A_j^m}^{(r-1)} \mathbf{X}_m$  and  $m_{A_j^m}^{(r-1)}$ ,  $\boldsymbol{\Sigma}_{A_j(m, m')}^{(r-1)}$  denote respectively the  $m$  and  $(m, m')$  entries of  $\mathbf{m}_{A_j}^{(r-1)}$  and  $\boldsymbol{\Sigma}_{A_j}^{(r-1)}$ .

- **E-Z step:** Akin to [3], we resort to a mean field approximation,  $\tilde{p}_Z^{(r)}(\mathbf{Z}) =$

$\prod_{j \in \mathcal{P}} \tilde{p}_{Z_j}^{(r)}(z_j)$  where  $\tilde{p}_{Z_j}^{(r)}(k) \propto \mathcal{N}(\mathbf{m}_{H_j}^{(r)}; \bar{\mathbf{h}}_k^{(r-1)}, \bar{\boldsymbol{\Sigma}}_k^{(r-1)}) \exp\{\frac{-1}{2} \text{trace}(\boldsymbol{\Sigma}_{H_j}^{(r)} \bar{\boldsymbol{\Sigma}}_k^{-1}) + \beta_z \sum_{l \sim j} \delta(k, \tilde{z}_l)\}$ , where  $\{\tilde{z}_j, j \in \mathcal{P}\}$  is a particular configuration of  $\mathbf{Z}$  updated according to a specific scheme [2] and  $\sim j$  denotes voxels neighboring  $j$ .

• **M step:** The maximization step can also be divided into five sub-steps (two additional ones compared to [3]) involving separately  $(\boldsymbol{\mu}, \mathbf{v})$ ,  $\boldsymbol{\beta}$ ,  $\beta_z$ ,  $(\mathbf{L}, \boldsymbol{\Gamma})$  and  $(\bar{\mathbf{h}}_k, \bar{\boldsymbol{\Sigma}}_k)_{1 \leq k \leq K}$ . For the  $(\boldsymbol{\mu}, \mathbf{v})$  and  $(\bar{\mathbf{h}}_k, \bar{\boldsymbol{\Sigma}}_k)_{1 \leq k \leq K}$  sub-steps, closed forms can be analytically derived for the updates. Numerical procedures are required for the other sub-steps. See [3] for details.

## 4 Validation

**Artificial datasets.** Experiments have been carried out on artificial fMRI data generated according to Eq. (1). We simulated a random mixed sequence of indexes coding for  $M = 2$  different stimuli composed of 30 trials each. The resulting ternary sequence was then multiplied by stimulus-dependent and space-varying NRLs, which were drawn from the prior distribution  $p(\mathbf{A}; \boldsymbol{\theta}_a)$ . To this end, 2D slices composed of 20 x 20 binary labels  $\mathbf{Q}^m$  (activating and non-activating voxels) were constructed for each stimulus type  $m$  (see Fig. 1[Left]). Given these labels, the NRLs were simulated as follows, for  $m = 1, 2$ :  $a_j^m | q_j^m = 1 \sim \mathcal{N}(0, 0.5)$  and  $a_j^m | q_j^m = 2 \sim \mathcal{N}(3.2, 0.5)$  (see Fig. 2[Left]). As regards HRFs, three groups ( $K = 3$ ) were considered and spatially organized in three parcels of similar size (labels  $\mathbf{Z}$ ) as shown in Fig. 1[Top-right]. Within each parcel, all voxels share the same HRF prior parameters  $(\bar{\mathbf{h}}_k, \bar{\boldsymbol{\Sigma}}_k)$ . The mean HRF shapes  $(\bar{\mathbf{h}}_k)_{k=1:K}$  are depicted in Fig. 3 and show strong fluctuations across parcels. Diagonal prior covariance matrices  $(\bar{\boldsymbol{\Sigma}}_k)_{k=1:K}$  were considered to draw voxel-specific HRFs according to  $p(\mathbf{h}_j | z_j = k)$ .

As regards parcellation, Fig. 1[Top-right] shows the ability of JPDE to recover the spatial support of hemodynamic territories with high accuracy (1% of misclassified voxels and a DICE index of 0.993) from an imperfect initialization (Fig. 1[Bottom-right]). The HRF variability does not seem to affect the activation maps which are equally well estimated in the JPDE and JDE cases (Fig. 1[Left]). However, a clear difference is seen on the estimated HRFs, which are depicted in Fig. 3 together with the ground truth: the three parcel-specific HRF estimates using JPDE are plotted as well as the single JDE-based HRF time course obtained by merging all parcels. The JPDE estimation is accurate for all parcels although the parcels cover different proportions of activation areas (*i.e.* useful signal). In contrast, JDE provides an intermediate HRF shape which lies between those of the three parcels. This explains the observed differences between the two models in terms of estimated NRL dynamics and points out the JDE sensitivity to the choice of the *a priori* parcellation. When imperfect, JDE is forced to miss-fit the real HRF shape, and therefore activation dynamics. In the same context, JPDE is able to automatically refine an initial parcellation and provide reliable detection and estimation results.

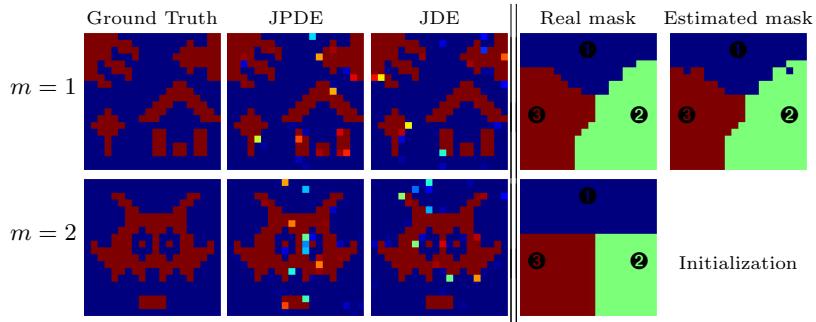
Interestingly, the NRL differences in Fig. 2 (see the JPDE-JDE plots in Fig. 2[Right]) show that NRL estimates with JPDE have higher pic values,

which means that JPDE allows retrieving stronger activation dynamics closer to the ground truth. The most significant NRL differences lie in parcels 2 and 3 where the JDE HRF estimate differs the most from the ground truth. In terms of Mean Square Error (MSE), reported values confirm the performance of JPDE over JDE:  $MSE_{\text{JDE}}^{m=1} = 0.0182$  vs  $MSE_{\text{JPDE}}^{m=1} = 0.0107$  and  $MSE_{\text{JDE}}^{m=2} = 0.0183$  vs  $MSE_{\text{JPDE}}^{m=2} = 0.0141$ .

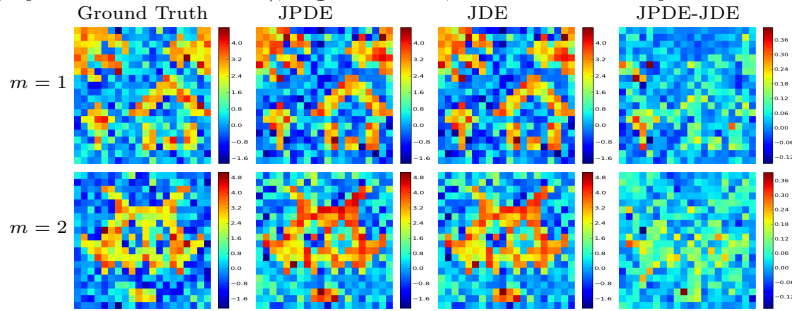
**Real data.** fMRI data were recorded at 3 T (Siemens Trio) using a gradient-echo EPI sequence (TE=30ms/TR=2.4s/thickness=3mm/FOV=192mm<sup>2</sup>) during a *Localizer* experiment [11] with a fast event-related paradigm. The paradigm involved sixty auditory (Aud.), visual (Vis.) and motor stimuli, defined in ten experimental conditions (Aud./Vis. sentences, Aud./Vis. calculations, left/right Aud. and Vis. clicks, horizontal and vertical checkerboards). For the considered dataset, the acquisition consisted of a single session of  $N = 128$  scans, yielding 3-D volumes with a spatial resolution of  $2 \times 2 \times 3\text{mm}^3$ . In this experiment, we focus on the **Auditory** condition which is supposed to reveal activations in the temporal lobes. The initial parcellation used (from [12]) and the JPDE estimated one are shown in Fig. 4[Top-middle]. It appears that JPDE groups a number of initial parcels as they turn out to have similar hemodynamic properties, which suggests that the initial parcellation may be unnecessarily too fine. JPDE retrieves respectively three and two different parcels in the left and right temporal regions of interest (ROI). However, JPDE HRF estimates (Fig. 4[Top-right]) show very close shapes for parcels 1 and 3 for the left ROI, which explains the reduced size of the third parcel. As regards activation levels, Fig. 4[Bottom-middle] shows the estimated NRLs using JPDE and JDE. The difference image in Fig. 4[Bottom-right] confirms the ability of JPDE to retrieve stronger activations w.r.t. to JDE.

## 5 Conclusion

We proposed a JPDE framework that provides an automatic parcellation of the brain into homogeneous hemodynamic territories. The quality and reliability of such a parcellation is at the core of robust neural activity detection and brain hemodynamics estimation. By enabling a fully adaptive data-dependent identification of the parcels, the JPDE framework greatly extends the possibilities of detection-estimation approaches. The gain in removing the commitment to a priori fixed territories has been confirmed in preliminary experiments that showed that the JPDE achieved better results than the standard JDE using a fixed parcellation. An important remaining question raised by this new framework is related to the issue of choosing the right number of HRF groups at best *i.e.* in a sparse manner so as to capture the spatial variability in hemodynamic territories while enabling the reproducibility of parcel identification across fMRI datasets. This question should be the most critical to validate our approach but also the most interesting to neuroscientists in case of success. For this specific point, we shall investigate variational approximations of standard information criteria [5] such as the Bayesian Information Criterion.



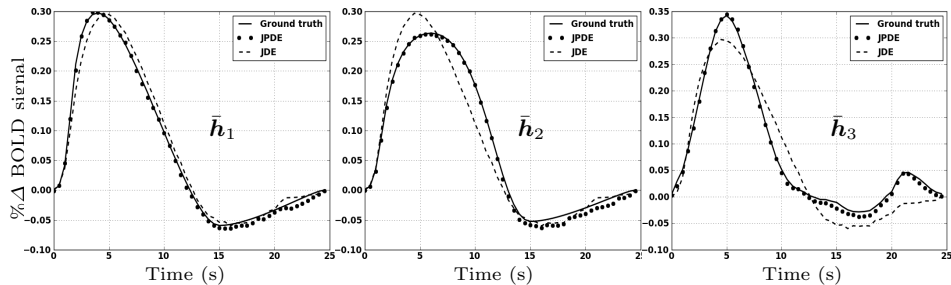
**Fig. 1.** Left: reference activation labels and Posterior Probability Maps (PPM) for JPDE and JDE (a single parcel is assumed for JDE); Right: reference, estimated and initial parcellation masks.



**Fig. 2.** Reference and estimated NRLs using JPDE (3 parcels) and JDE (1 parcel).

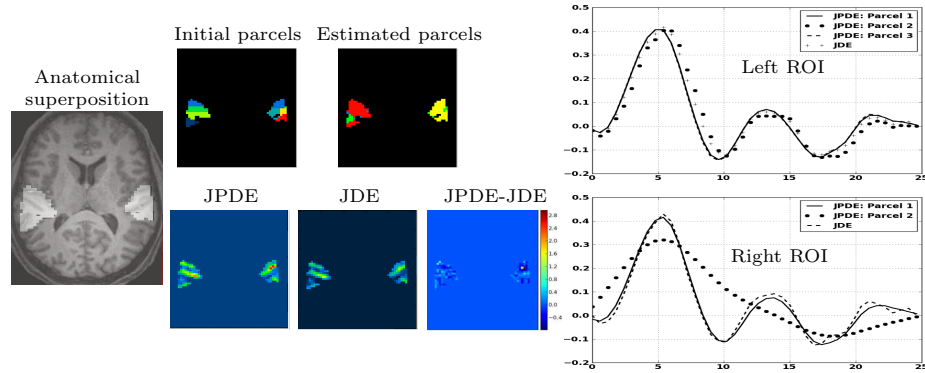
## References

1. Boynton, G.M., Engel, S.A., Glover, G.H., Heeger, D.J.: Linear systems analysis of functional magnetic resonance imaging in human V1. *J. Neurosci.* 16, 4207–4221 (1996)
2. Celeux, G., Forbes, F., Peyrard, N.: EM procedures using mean field-like approximations for Markov model-based image segmentation. *Patt. Rec.* 36, 131–144 (2003)
3. Chaari, L., Forbes, F., Vincent, T., Dojat, M., Ciuciu, P.: Variational solution to the joint detection estimation of brain activity in fMRI. In: *MICCAI*. vol. 6892, pp. 260–268 (2011)



**Fig. 3.** Reference and estimated HRF patterns ( $\bar{h}_k$ ) for each parcel using JPDE and JDE.





**Fig. 4.** Left: anatomical ROI definition; Top-middle: Initial and estimated parcellations; Top-right and Bottom-right: HRF estimates with JDE and JPDE for the estimated parcels, and the two regions of interest; Bottom-right: NRL estimates with JDE and JPDE and difference image.

4. Ciuciu, P., Poline, J., Marrelec, G., Idier, J., Pallier, C., Benali, H.: Unsupervised robust non-parametric estimation of the hemodynamic response function for any fMRI experiment. *IEEE Trans. Med. Imag.* 22(10), 1235–1251 (Oct 2003)
5. Forbes, F., Peyrard, N.: Hidden Markov Random Field model selection criteria based on mean field-like approximations. *IEEE Trans. Pattern Anal. Mach. Intell.* 25(9), 1089–1101 (Sep 2003)
6. Glover, G.H.: Deconvolution of impulse response in event-related BOLD fMRI. *Neuroimage* 9, 416–429 (1999)
7. Goutte, C., Nielsen, F., Hansen, L.K.: Modeling the haemodynamic response in fMRI using smooth FIR filters. *IEEE Transactions on Medical Imaging* 19(12), 1188–1201 (Dec 2000)
8. Handwerker, D.A., Ollinger, J.M., Mark, D.: Variation of BOLD hemodynamic responses across subjects and brain regions and their effects on statistical analyses. *Neuroimage* 21, 1639–1651 (2004)
9. Kershaw, J., Ardekani, B.A., Kanno, I.: Application of Bayesian inference to fMRI data analysis. *IEEE Trans. on Med. Imag.* 18(12), 1138–1152 (Dec 1999)
10. Makni, S., Idier, J., Vincent, T., Thirion, B., Dehaene-Lambertz, G., Ciuciu, P.: A fully Bayesian approach to the parcel-based detection-estimation of brain activity in fMRI. *Neuroimage* 41(3), 941–969 (2008)
11. Pinel, P., Thirion, B., Mériaux, S., Jobert, A., Serres, J., Le Bihan, D., Poline, J.B., Dehaene, S.: Fast reproducible identification and large-scale databasing of individual functional cognitive networks. *BMC Neurosci.* 8(1), 91 (2007)
12. Thirion, B., Flandin, G., Pinel, P., Roche, A., Ciuciu, P., Poline, J.B.: Dealing with the shortcomings of spatial normalization: Multi-subject parcellation of fMRI datasets. *Hum. Brain Mapp.* 27(8), 678–693 (2006)
13. Vincent, T., Risser, L., Ciuciu, P.: Spatially adaptive mixture modeling for analysis of within-subject fMRI time series. *IEEE Trans. Med. Imag.* 29, 1059–1074 (2010)
14. Wager, T.D., Vazquez, A., Hernandez, L., Noll, D.C.: Accounting for nonlinear BOLD effects in fMRI: parameter estimates and a model for prediction in rapid event-related studies. *Neuroimage* 25(1), 206–18 (Mar 2005)
15. Wang, J., Zhu, H., Fan, J., Giovanello, K., Lin, W.: Adaptively and Spatially Estimating the Hemodynamic Response Functions in fMRI. In: *MICCAI*. vol. 6892, pp. 269–276 (2011)
16. Woolrich, M., Jenkinson, M., Brady, J., Smith, S.: Fully Bayesian spatio-temporal modelling of fMRI data. *IEEE Trans. Med. Imag.* 23(2), 213–231 (Feb 2004)