



HAL
open science

Asymptotic Models for an Elasto-Acoustic Problem with a Thin Layer

Victor Péron

► **To cite this version:**

Victor Péron. Asymptotic Models for an Elasto-Acoustic Problem with a Thin Layer. Twelfth International Conference Zaragoza-Pau on Mathematics, Sep 2012, Jaca, Spain. hal-00768042

HAL Id: hal-00768042

<https://inria.hal.science/hal-00768042>

Submitted on 25 Mar 2021

HAL is a multi-disciplinary open access archive for the deposit and dissemination of scientific research documents, whether they are published or not. The documents may come from teaching and research institutions in France or abroad, or from public or private research centers.

L'archive ouverte pluridisciplinaire **HAL**, est destinée au dépôt et à la diffusion de documents scientifiques de niveau recherche, publiés ou non, émanant des établissements d'enseignement et de recherche français ou étrangers, des laboratoires publics ou privés.

Asymptotic Models for an Elasto-Acoustic Problem with a Thin Layer

VICTOR PÉRON

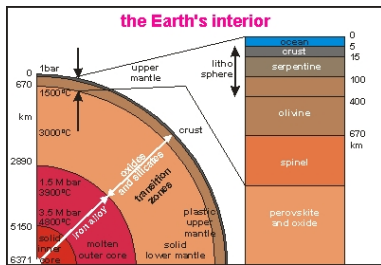
Université de Pau et des Pays de l'Adour
INRIA Bordeaux Sud-Ouest, Team MAGIQUE 3D

Twelfth International Conference Zaragoza-Pau on Mathematics
Jaca, September 17, 2012

Motivations

HPC-GA Project

- **High Performance Computing for Geophysics Applications :**
Earthquakes
- **Numerical Models :** Time dependent Elasto-Acoustic Coupling
 - Elasto-Acoustic Coupling : to reproduce earthquakes
 - Modeling the effects of the ocean on seismic waves

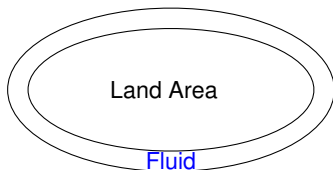


- The medium : a Land Area surrounded by a **thin Fluid zone**

Motivations

Configuration, Difficulty and Method

- **Configuration**



- **Difficulty**

Apply a FEM on a mesh with **thin cells** in the **Fluid** and much larger in the solid

- **Method**

- 1 Replace the **Fluid layer** by an Equivalent boundary condition

Approach : an asymptotic method

- 2 Couple this condition with the elastic wave equation
- 3 Use a FEM



Motivations

Bibliography and Outline

Bibliography

- Modeling Fluid-Solid Interaction Problems
JONES 83, LUKE-MARTIN 95, NATROCHVILI ET AL. 00, ... ,
MONK-SELGAS 09
- Derivation of Equivalent Conditions for **thin layer** Problems
LAFITTE 93, ENGQUIST-NÉDÉLEC 93, VOLAKIS-SENIOR 95,
BENDALI-LEMRAËT 96, CALOZ-COSTABEL-DAUGE-VIAL 06 ...

Outline

- Asymptotic Analysis for the time-harmonic **Elasto-acoustic** equations in a domain with a **thin acoustic layer**.

Outline

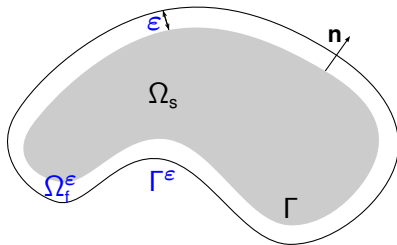
- 1 **Uniform Estimates**
- 2 Equivalent Conditions
- 3 Numerical Simulations

An Elasto-Acoustic Problem with a Thin Layer

Framework and Issue

The Problem (\mathbf{P}_ϵ) set in a smooth bounded domain $\Omega^\epsilon = \Omega_s \cup \Gamma \cup \Omega_f^\epsilon$:

$$\begin{aligned} \Delta p + \kappa^2 p &= 0 && \text{in } \Omega_f^\epsilon \\ \nabla \cdot \underline{C}(x) \nabla \mathbf{u} + \omega^2 \rho \mathbf{u} &= 0 && \text{in } \Omega_s \\ \partial_n p &= \rho_f \omega^2 \mathbf{u} \cdot \mathbf{n} - \partial_n p_i && \text{on } \Gamma \\ \mathbf{n} \underline{C}(x) \nabla \mathbf{u} &= -p \mathbf{n} - p_i \mathbf{n} && \text{on } \Gamma \\ p &= 0 && \text{on } \Gamma^\epsilon \end{aligned}$$



Assumption

(i) $\underline{C}(x) = (C_{ijkl}(x))$ is symmetric : $C_{ijkl} = C_{jikl} = C_{klij}$.

(ii) $C_{ijkl}(x)$ are real valued smooth functions, up to Γ .

(iii) $\exists \alpha > 0$, $\forall \xi = (\xi_{ij})$ sym. tensor, $\sum_{i,j,k,l} C_{ijkl} \xi_{ij} \bar{\xi}_{kl} \geq \alpha \sum_{i,j} |\xi_{ij}|^2$.

Weak Solutions

Variational Problem $(VP)_\varepsilon$

- $V_\varepsilon = \{(\mathbf{u}, p) \in H^1(\Omega_s) \times H^1(\Omega_f^\varepsilon) \mid \gamma_0 p = 0 \text{ on } \Gamma^\varepsilon\}$
- For all $\varepsilon > 0$, $(VP)_\varepsilon$ writes : Find $(\mathbf{u}_\varepsilon, p_\varepsilon) \in V_\varepsilon$ such that

$$\forall (\mathbf{v}, q) \in V_\varepsilon, \quad a_\varepsilon((\mathbf{u}_\varepsilon, p_\varepsilon), (\mathbf{v}, q)) = \langle F, (\mathbf{v}, q) \rangle_{V_\varepsilon', V_\varepsilon}$$

$$a_\varepsilon((\mathbf{u}, p), (\mathbf{v}, q)) := \int_{\Omega_f^\varepsilon} (\nabla p \cdot \nabla \bar{q} - \kappa^2 p \bar{q}) \, d\mathbf{x}$$

$$+ \int_{\Omega_s} (\underline{C}(\mathbf{x}) \underline{\nabla} \mathbf{u} : \underline{\nabla} \bar{\mathbf{v}} - \omega^2 \rho \mathbf{u} \bar{\mathbf{v}}) \, d\mathbf{x} + \int_\Gamma (\omega^2 \rho_f \mathbf{u} \cdot \mathbf{n} \bar{q} + p \bar{\mathbf{v}} \cdot \mathbf{n}) \, ds$$

Uniform Estimates

Some resonant frequencies may appear in the solid

Assumption (SA)

The angular frequency ω is not an eigenfrequency of the problem

$$\begin{cases} \nabla \cdot \underline{C}(x) \underline{\nabla} \mathbf{u} + \omega^2 \rho \mathbf{u} = 0 & \text{in } \Omega_s \\ \underline{C}(x) \underline{\nabla} \mathbf{u} \mathbf{n} = 0 & \text{on } \Gamma. \end{cases}$$

Theorem

Under Assumption (SA), $\exists \varepsilon_0 > 0$, $\forall \varepsilon \in (0, \varepsilon_0)$, the problem $(\mathbf{VP})_\varepsilon$ with data $F \in V'_\varepsilon$ has a unique solution $(\mathbf{u}_\varepsilon, p_\varepsilon) \in V_\varepsilon$ and

$$\|\mathbf{u}_\varepsilon\|_{1, \Omega_s} + \|p_\varepsilon\|_{1, \Omega_f^\varepsilon} \leq C \|F\|_{V'_\varepsilon}.$$

Application : Convergence of an asymptotic expansion as $\varepsilon \rightarrow 0$.

Key for the proof: introduce a "Scaled Problem"

Scaled Problem $(\mathfrak{P})_\epsilon$

Formulation in a fixed domain

- For any function p defined in Ω_f^ϵ , define \mathfrak{p} in $\Omega_f := \Gamma \times (0, 1)$:

$$\mathfrak{p}(\mathbf{x}) = p(\Psi(y_\alpha), S), \quad S = \frac{s}{\epsilon} \in (0, 1).$$

- $V = \{(\mathbf{u}, \mathfrak{p}) \in H^1(\Omega_s) \times H^1(\Omega_f) \mid \mathfrak{p}(\cdot, 1) = 0 \text{ on } \Gamma\}$
- $(\mathfrak{P})_\epsilon$ writes : Find $(\mathbf{u}, \mathfrak{p}) \in V$ such that $\forall (\mathbf{v}, \mathfrak{q}) \in V$

$$\begin{aligned} \epsilon \int_0^1 \int_\Gamma [(\mathbb{I} + \epsilon S \mathcal{R})^{-2} \nabla_\Gamma \mathfrak{p} \nabla_\Gamma \bar{\mathfrak{q}} + \epsilon^{-2} \partial_s \mathfrak{p} \partial_s \bar{\mathfrak{q}} - \kappa^2 \mathfrak{p} \bar{\mathfrak{q}}] \det(\mathbb{I} + \epsilon S \mathcal{R}) \, d\Omega_f \\ + a_s(\mathbf{u}, \mathbf{v}) + \int_\Gamma (\omega^2 \rho_f \mathbf{u} \cdot \mathbf{n} \bar{\mathfrak{q}} + \mathfrak{p} \bar{\mathbf{v}} \cdot \mathbf{n}) \, d\Gamma = \langle \mathfrak{F}_\epsilon, (\mathbf{v}, \mathfrak{q}) \rangle_{V', V} \end{aligned}$$

Scaled Problem $(\mathfrak{P})_\varepsilon$

Uniform estimates

Lemma

Under Assumption (SA), $\exists \varepsilon_0 > 0$, $\forall \varepsilon \in (0, \varepsilon_0)$, any solution $(\mathbf{u}_\varepsilon, \mathbf{p}_\varepsilon) \in V$ of problem $(\mathfrak{P})_\varepsilon$ with a data $\mathfrak{F}_\varepsilon \in V'$ satisfies

$$\|(\mathbf{u}_\varepsilon, \mathbf{p}_\varepsilon)\|_{0, \Omega_s \times \Omega_f} + \|\mathbf{u}_\varepsilon \cdot \mathbf{n}\|_{0, \Gamma} + \|\mathbf{p}_\varepsilon\|_{0, \Gamma} \leq C \|\mathfrak{F}_\varepsilon\|_{V'}.$$

Theorem

Under Assumption (SA), $\exists \varepsilon_0 > 0$, $\forall \varepsilon \in (0, \varepsilon_0)$, the problem $(\mathfrak{P})_\varepsilon$ with data $\mathfrak{F}_\varepsilon \in V'$ has a unique solution $(\mathbf{u}_\varepsilon, \mathbf{p}_\varepsilon) \in V$ which satisfies

$$\sqrt{\varepsilon} \|\nabla_\Gamma \mathbf{p}_\varepsilon\|_{0, \Omega_f} + \sqrt{\varepsilon}^{-1} \|\partial_S \mathbf{p}_\varepsilon\|_{0, \Omega_f} + \|\mathbf{p}_\varepsilon\|_{0, \Omega_f} + \|\mathbf{u}_\varepsilon\|_{1, \Omega_s} \leq C \|\mathfrak{F}_\varepsilon\|_{V'}.$$

Sketch of the proof of the Lemma

Proof by contradiction.

Assume : $\exists(\mathbf{u}_m, \mathbf{p}_m) \in V, m \in \mathbb{N}$, satisfying $(\mathfrak{P})_{\epsilon_m}$ associated with $\epsilon_m \rightarrow 0$ and $\tilde{\mathfrak{F}}_m \in V'$ such that

$$\|(\mathbf{u}_m, \mathbf{p}_m)\|_{0, \Omega_s \times \Omega_f} + \|\mathbf{u}_m \cdot \mathbf{n}\|_{0, \Gamma} + \|\mathbf{p}_m\|_{0, \Gamma} = 1 \quad \text{and} \quad \|\tilde{\mathfrak{F}}_m\|_{V'} \rightarrow 0$$

- 1 Prove that $\|(\mathbf{u}_m, \mathbf{p}_m)\|_W \leq C$
 with $W = \{(\mathbf{u}, \mathbf{p}) \in V \mid \mathbf{p} \in \mathbf{H}^1(0, 1; L^2(\Gamma)), \mathbf{p}(\cdot, 1) = 0 \text{ on } \Gamma\}$
- 2 Compactness argument :
 $\mathbf{u}_m \rightarrow \mathbf{u}$ in $L^2(\Omega_s)$ and $\mathbf{p}_m \rightarrow \mathbf{p} = 0$ in $L^2(\Omega_f)$.
- 3 Prove that $\|\mathbf{u}\|_{0, \Omega_s} + \|\mathbf{u} \cdot \mathbf{n}\|_{0, \Gamma} = 1$
- 4 Using (SA), we prove $\mathbf{u} = 0$: contradiction

Outline

- 1 Uniform Estimates
- 2 Equivalent Conditions**
- 3 Numerical Simulations

Methodology

Framework : $\Gamma, \Gamma^\varepsilon$ smooth surfaces in \mathbb{R}^3 . Smooth data

- Step 1 : Derive an Asymptotic Expansion for $(\mathbf{u}_\varepsilon, p_\varepsilon)$ when $\varepsilon \rightarrow 0$

$$\mathbf{u}_\varepsilon(x) = \mathbf{u}_0(x) + \varepsilon \mathbf{u}_1(x) + \varepsilon^2 \mathbf{u}_2(x) + \dots,$$

$$p_\varepsilon(x) = p_0(x; \varepsilon) + \varepsilon p_1(x; \varepsilon) + \varepsilon^2 p_2(x; \varepsilon) + \dots, \quad p_j(x; \varepsilon) = p_j(y_\alpha, \frac{S}{\varepsilon}).$$

- Step 2 : Derive Equivalent Conditions of order $k \in \mathbb{N}$:
Identify a simpler problem satisfied by

$$\mathbf{u}_{k,\varepsilon} := \mathbf{u}_0 + \varepsilon \mathbf{u}_1 + \varepsilon^2 \mathbf{u}_2 + \dots + \varepsilon^k \mathbf{u}_k \quad \text{up to } \mathcal{O}(\varepsilon^{k+1})$$

- Step 3 : Prove the Stability of Equivalent models \mathbf{u}_ε^k and

$$\|\mathbf{u}_\varepsilon - \mathbf{u}_\varepsilon^k\|_{1,\Omega_s} \leq C\varepsilon^{k+1}$$

Step 1 : Multiscale Expansion

First terms

- At step $n = 0$, we obtain

$$p_0 = 0 ,$$

and then \mathbf{u}_0 solves the problem

$$\begin{cases} \nabla \cdot \underline{\underline{C}}(x) \nabla \mathbf{u}_0 + \omega^2 \rho \mathbf{u}_0 = 0 & \text{in } \Omega_s \\ \mathbf{T}(\mathbf{u}_0) = -p_i \mathbf{n} & \text{on } \Gamma . \end{cases}$$

- At step $n = 1$, we find successively

$$p_1(\cdot, S) = (S - 1) (\rho_f \omega^2 \mathbf{u}_0 \cdot \mathbf{n} - \partial_n p_i) , \quad S \in (0, 1)$$

and that \mathbf{u}_1 solves

$$\begin{cases} \nabla \cdot \underline{\underline{C}}(x) \nabla \mathbf{u}_1 + \omega^2 \rho \mathbf{u}_1 = 0 & \text{in } \Omega_s \\ \mathbf{T}(\mathbf{u}_1) = \rho_f \omega^2 \mathbf{u}_0 \cdot \mathbf{n} \mathbf{n} - \partial_n p_i \mathbf{n} & \text{on } \Gamma . \end{cases}$$

Step 1 : Multiscale Expansion

First terms

- At step $n = 2$,

$$p_2(\cdot, Y_3) = (S^2 - 1)\mathcal{H}[\rho_f \omega^2 \mathbf{u}_0 \cdot \mathbf{n} - \partial_n p_i] + (S - 1)\rho_f \omega^2 \mathbf{u}_1 \cdot \mathbf{n}$$

and then, \mathbf{u}_2 solves

$$\begin{cases} \nabla \cdot \underline{C}(x) \nabla \mathbf{u}_2 + \omega^2 \rho \mathbf{u}_2 = 0 & \text{in } \Omega_s \\ \mathbf{T}(\mathbf{u}_2) = \rho_f \omega^2 \mathbf{u}_1 \cdot \mathbf{n} \mathbf{n} + \mathcal{H}[\rho_f \omega^2 \mathbf{u}_0 \cdot \mathbf{n} - \partial_n p_i] \mathbf{n} & \text{on } \Gamma. \end{cases}$$

Step 1 : Validation of the Asymptotic Expansion

Aim : proving Estimates for Remainders

$$\mathbf{r}_\epsilon^{N+1} := \mathbf{u}_\epsilon - \sum_{n=0}^N \epsilon^n \mathbf{u}_n \quad \text{in } \Omega_s, \quad \text{and} \quad r_\epsilon^{N+1} := p_\epsilon - \sum_{n=0}^N \epsilon^n p_n \quad \text{in } \Omega_f^\epsilon$$

Evaluation of the right hand sides in

$$\left\{ \begin{array}{ll} \kappa^2 r_\epsilon^{N+1} + \Delta r_\epsilon^{N+1} & = f_\epsilon \quad \text{in } \Omega_f^\epsilon \\ \omega^2 \rho r_\epsilon^{N+1} + \nabla \cdot \underline{C}(x) \nabla r_\epsilon^{N+1} & = 0 \quad \text{in } \Omega_s \\ \partial_{\mathbf{n}} r_\epsilon^{N+1} - \rho_f \omega^2 r_\epsilon^{N+1} \cdot \mathbf{n} & = g_\epsilon \quad \text{on } \Gamma \\ \mathbf{T}(r_\epsilon^{N+1}) + r_\epsilon^{N+1} \mathbf{n} & = 0 \quad \text{on } \Gamma \\ r_\epsilon^{N+1} & = 0 \quad \text{on } \Gamma^\epsilon. \end{array} \right.$$

The RHS are explicit: $f_\epsilon = \mathcal{O}(\epsilon^{N-\frac{1}{2}})$ in Ω_f^ϵ ; $g_\epsilon = \mathcal{O}(\epsilon^N)$ on Γ

Optimal Estimates : $\|\mathbf{r}_\epsilon^{N+1}\|_{1,\Omega_s} + \sqrt{\epsilon} \|r_\epsilon^{N+1}\|_{1,\Omega_f^\epsilon} \leq C_N \epsilon^{N+1}$

Step 2 : Equivalent Conditions on Γ

Identify a simpler problem

$$(\mathbf{P}_\varepsilon^k) \quad \begin{cases} \omega^2 \rho \mathbf{u}_\varepsilon^k + \nabla \cdot \underline{C}(x) \underline{\nabla} \mathbf{u}_\varepsilon^k = 0 & \text{in } \Omega_s \\ \mathbf{T}(\mathbf{u}_\varepsilon^k) + \mathbf{B}_{k,\varepsilon}(\mathbf{u}_\varepsilon^k) = \mathbf{h}_{k,\varepsilon} & \text{on } \Gamma, \end{cases}$$

with $\mathbf{B}_{k,\varepsilon}$ a surfacic differential operator.

- $k \in \{0, 1, 2\}$ for a Dirichlet b.c. on Γ^ε
- $k \in \{0, 1\}$ for a Fourier-Robin b.c. on Γ^ε

Step 2 : Equivalent Conditions

Dirichlet b.c.

- $k = 0$:

$$\mathbf{T}(\mathbf{u}_0) = -p_i \mathbf{n} \quad \text{on } \Gamma .$$

- $k = 1$:

$$\mathbf{T}(\mathbf{u}_\epsilon^1) - \epsilon \omega^2 \rho_f \mathbf{u}_\epsilon^1 \cdot \mathbf{n} \mathbf{n} = \mathbf{h}_{1,\epsilon} \quad \text{on } \Gamma .$$

- $k = 2$:

$$\mathbf{T}(\mathbf{u}_\epsilon^2) - \epsilon \omega^2 \rho_f (1 + \epsilon \mathcal{H}) \mathbf{u}_\epsilon^2 \cdot \mathbf{n} \mathbf{n} = \mathbf{h}_{2,\epsilon} \quad \text{on } \Gamma .$$

Step 2 : Equivalent Conditions

Example : Order 1

$\mathbf{u}_{1,\varepsilon} = \mathbf{u}_0 + \varepsilon \mathbf{u}_1$ satisfies the elastic equation in Ω_s and

$$\mathbf{T}(\mathbf{u}_{1,\varepsilon}) - \varepsilon \omega^2 \rho_f \mathbf{u}_{1,\varepsilon} \cdot \mathbf{n} \mathbf{n} = -\mathbf{p}_i \mathbf{n} - \varepsilon \partial_n \mathbf{p}_i \mathbf{n} - \varepsilon^2 \rho_f \omega^2 \mathbf{u}_1 \cdot \mathbf{n} \mathbf{n} \quad \text{on } \Gamma$$

We infer a simpler problem

$$(\mathbf{P}_\varepsilon^1) \quad \begin{cases} \omega^2 \rho \mathbf{u}_\varepsilon^1 + \nabla \cdot \underline{\mathbf{C}}(x) \underline{\nabla} \mathbf{u}_\varepsilon^1 = 0 & \text{in } \Omega_s \\ \mathbf{T}(\mathbf{u}_\varepsilon^1) - \varepsilon \omega^2 \rho_f \mathbf{u}_\varepsilon^1 \cdot \mathbf{n} \mathbf{n} = \mathbf{h}_{1,\varepsilon} & \text{on } \Gamma, \end{cases}$$

Step 2 : Equivalent Conditions

Fourier-Robin b.c.

Fourier-Robin b.c. : $\partial_n p_\epsilon - i\kappa p_\epsilon = 0$ on Γ^ϵ

- $k = 0$:

$$\mathbf{T}(\mathbf{u}_\epsilon^0) - i\omega c \rho_f \mathbf{u}_\epsilon^0 \cdot \mathbf{n} \mathbf{n} = \mathbf{g}_{0,\epsilon} \quad \text{on } \Gamma$$

- $k = 1$:

$$\mathbf{T}(\mathbf{u}_\epsilon^1) - i\omega c \rho_f \mathbf{u}_\epsilon^1 \cdot \mathbf{n} \mathbf{n} + \epsilon c^2 \rho_f (\Delta_\Gamma + \kappa^2 \mathbb{I} - 2i\kappa \mathcal{H} \mathbb{I})(\mathbf{u}_\epsilon^1 \cdot \mathbf{n}) \mathbf{n} = \mathbf{g}_{1,\epsilon} \quad \text{on } \Gamma$$

Step 3 : Stability and Convergence of Equivalent Conditions

Step 3.1 : Stability

Step 3.1 : Prove that problems $(\mathbf{P}_\varepsilon^k)$ are well-posed

Proposition

Under Assumption (SA), $\exists \varepsilon_0 > 0$ s.t. $\forall \varepsilon \in (0, \varepsilon_0)$, $\forall k \in \{0, 1, 2\}$, the problem $(\mathbf{P}_\varepsilon^k)$ with data $h_k \in L^2(\Gamma)$ has a unique solution $\mathbf{u}_\varepsilon^k \in H^1(\Omega_s)$

$$\|\mathbf{u}_\varepsilon^k\|_{1, \Omega_s} \leq C \|h_k\|_{0, \Gamma}$$

Application : Convergence of an asymptotic expansion of \mathbf{u}_ε^k as $\varepsilon \rightarrow 0$.

Step 3.2 : Convergence of Equivalent Conditions

Step 3.2 : Prove that the solution \mathbf{u}_ε^k satisfies an error estimate

$$\|\mathbf{u}_\varepsilon - \mathbf{u}_\varepsilon^k\|_{1,\Omega_s} \leq C\varepsilon^{k+1}.$$

Proof :

(i) Derive an expansion of \mathbf{u}_ε^k and show that :

$$\mathbf{u}_\varepsilon^k = \mathbf{u}_0 + \varepsilon\mathbf{u}_1 + \varepsilon^2\mathbf{u}_2 + \cdots + \varepsilon^k\mathbf{u}_k + \tilde{\mathbf{r}}_\varepsilon^{k+1}.$$

Recall :

$$\mathbf{u}_\varepsilon = \mathbf{u}_0 + \varepsilon\mathbf{u}_1 + \varepsilon^2\mathbf{u}_2 + \cdots + \varepsilon^k\mathbf{u}_k + \mathbf{r}_\varepsilon^{k+1}$$

hence,

$$\|\mathbf{u}_\varepsilon - \mathbf{u}_\varepsilon^k\|_{1,\Omega_s} = \|\mathbf{r}_\varepsilon^{k+1} - \tilde{\mathbf{r}}_\varepsilon^{k+1}\|_{1,\Omega_s}.$$

(ii) There holds

$$\mathbf{T}(\tilde{\mathbf{r}}_\varepsilon^{k+1}) + \mathbf{B}_{k,\varepsilon}(\tilde{\mathbf{r}}_\varepsilon^{k+1}) = \mathcal{O}(\varepsilon^{k+1}) \quad \text{on } \Gamma.$$

According to the step 3.1, we infer the uniform error estimates:

$$\|\tilde{\mathbf{r}}_\varepsilon^{k+1}\|_{1,\Omega_s} \leq C\varepsilon^{k+1}.$$

Outline

- 1 Uniform Estimates
- 2 Equivalent Conditions
- 3 Numerical Simulations**

Finite Element Method

Joint work with : J. Diaz (INRIA).

We use a Discontinuous Galerkin Method (IPDGM).

- 2D Computational domain : Ω_s is a disk of radius 0.01
- $\omega = 1.5 \times 10^6$
- Source : $p_i(\mathbf{x}) = \exp(i\omega \mathbf{x} \cdot \mathbf{d})$ with $\mathbf{d} = (1, 0)$
- \mathbb{P}_3 -finite elements (Lagrange) available in the Library [Hou10ni](#)
- Navier equation :

$$\mu \Delta \mathbf{u} + (\lambda + \mu) \nabla \operatorname{div} \mathbf{u} + \omega^2 \rho \mathbf{u} = 0 \quad \text{in } \Omega_s$$

with Lamé coefficients : $\mu = 26.32 \times 10^9$ and $\lambda = 51.08 \times 10^9$.

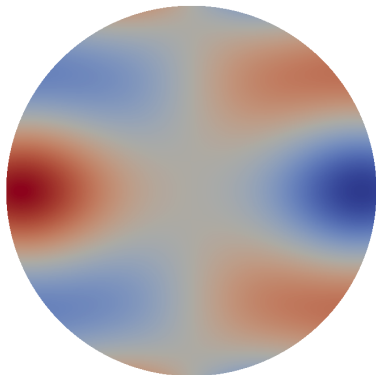
- $c = 1500 \text{ m.s}^{-1}$, $\rho_f = 1000 \text{ kg.m}^{-3}$, $\rho = 2700 \text{ kg.m}^{-3}$.

Numerical Simulations

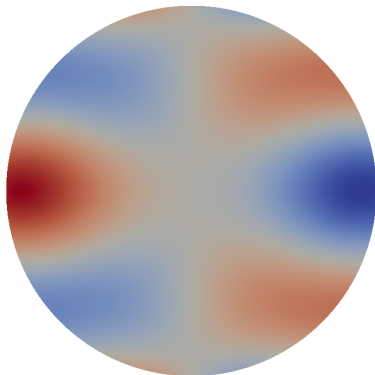
$\varepsilon = 0.0001$;

\mathbf{u}_ε : analytical solution;

\mathbf{u}_ε^2 : FE solution (equivalent model of order 2).



$|\operatorname{Re} \mathbf{u}_\varepsilon|$



$|\operatorname{Re} \mathbf{u}_\varepsilon^2|$

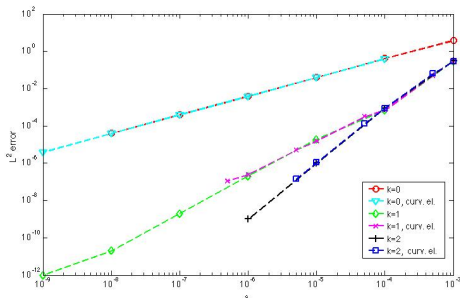
Convergence of the models

Dirichlet b.c.

For $k \in \{0, 1, 2\}$, we plot the L^2 -errors $\|\mathbf{u}_\varepsilon - \mathbf{u}_\varepsilon^k\|_{0, \Omega_s}$ w.r.t. ε :

\mathbf{u}_ε : analytical solution

\mathbf{u}_ε^k : analytical solution / FE solutions with Curved elements



The convergence rate coincide with the theory $\|\mathbf{u}_\varepsilon - \mathbf{u}_\varepsilon^k\|_{0, \Omega_s} = \mathcal{O}(\varepsilon^{k+1})$

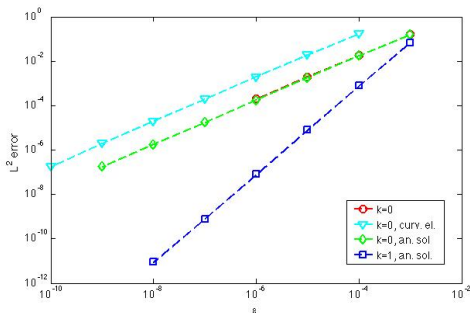
Convergence of the models

Fourier-Robin b.c.

For $k \in \{0, 1\}$, we plot the L^2 -errors $\|\mathbf{u}_\epsilon - \mathbf{u}_\epsilon^k\|_{0, \Omega_s}$ w.r.t. ϵ ,

\mathbf{u}_ϵ : analytical solution

\mathbf{u}_ϵ^k : analytical solution / FE solutions



Conclusion

- 1 Time dependent Equivalent Conditions
- 2 Higher Order Equivalent Conditions
- 3 Thin layer with variable thickness

Thank you for your attention!