



Single View Point Omnidirectional Camera Calibration from Planar Grids

Christopher Mei, Patrick Rives

► To cite this version:

Christopher Mei, Patrick Rives. Single View Point Omnidirectional Camera Calibration from Planar Grids. IEEE International Conference on Robotics and Automation (ICRA), Apr 2007, Rome, Italy. pp.3945-3950, 10.1109/ROBOT.2007.364084 . hal-00767674

HAL Id: hal-00767674

<https://inria.hal.science/hal-00767674>

Submitted on 20 Dec 2012

HAL is a multi-disciplinary open access archive for the deposit and dissemination of scientific research documents, whether they are published or not. The documents may come from teaching and research institutions in France or abroad, or from public or private research centers.

L'archive ouverte pluridisciplinaire **HAL**, est destinée au dépôt et à la diffusion de documents scientifiques de niveau recherche, publiés ou non, émanant des établissements d'enseignement et de recherche français ou étrangers, des laboratoires publics ou privés.

Single View Point Omnidirectional Camera Calibration from Planar Grids

Christopher Mei and Patrick Rives

INRIA, 2004 Route des Lucioles - BP 93, 06902 Sophia-Antipolis, Cedex - France
 {christopher.mei, patrick.rives}@sophia.inria.fr

Abstract—This paper presents a flexible approach for calibrating omnidirectional single viewpoint sensors from planar grids. Current approaches in the field are either based on theoretical properties and do not take into account important factors such as misalignment or camera-lens distortion or over-parametrised which leads to minimisation problems that are difficult to solve. Recent techniques based on polynomial approximations lead to impractical calibration methods. Our model is based on an exact theoretical projection function to which we add well identified parameters to model real-world errors. This leads to a full methodology from the initialisation of the intrinsic parameters to the general calibration. We also discuss the validity of the approach for fish-eye and spherical models. An implementation of the method is available as opensource software on the author’s Web page. We validate the approach with the calibration of parabolic, hyperbolic, wide-angle and spherical sensors.

I. INTRODUCTION

Many calibration methods for omnidirectional cameras have been presented in the past few years, they differentiate themselves mainly by the type of mirror taken into account (hyperbolic or parabolic), by the projection model used (skewness, alignment errors, ...), the information that is considered as known (for example the mirror parameters) and the method used (auto-calibration, grids, ...). Non-parametric [11] approaches have also been studied.

Auto-calibration techniques inspired by the division model [2], [3] have lead to uncalibrated omnidirectional structure and motion [8]. However a limitation to the approach comes from the precision reported, that is well adapted to outlier rejection (RANSAC) but less satisfying for reconstruction and motion estimation. In robotics it is often a prerequisite to have precisely calibrated sensors.

In the specific case of perspective cameras, methods using planar grids [14] are popular because of the simplicity of use and the precise results they procure. This article aims at generalising this type of approach to central catadioptric sensors. We made the choice of using standard planar grids because they are commonly available and simple to make. In [10], the authors propose a method relying on a polynomial approximation of the projection function. With this model, initial values of the projection function are difficult to obtain so the user has to select each point of the calibration grid independently for the calibration. We will show that by using an exact model to which we add small errors, only four points need to be selected for each calibration grid.

Figure 1 presents the different parameters that could be taken into account for example in the case of a parabolic mir-

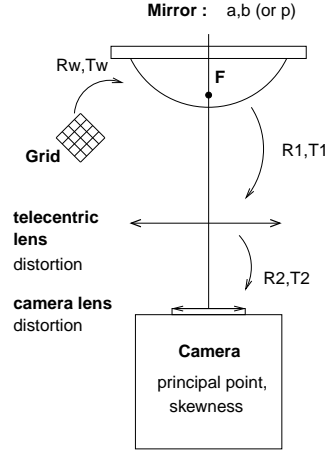


Fig. 1. Complete calibration parameters

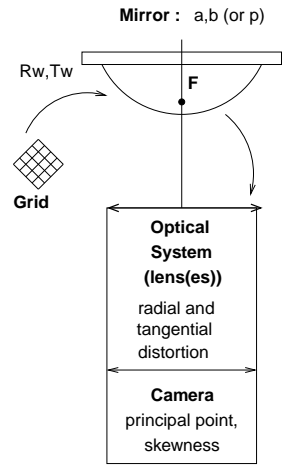


Fig. 2. Simplified parameters

ror with a telecentric lens. Gonzalez-Barbosa [5] describes a calibration method to estimate all of these parameters. However too many parameters make the equations difficult to minimise because of the numerous local minima, the need for a lot of data and the numerical instability introduced into the Jacobian. We decided to reduce the number of parameters by making the assumption that the errors due to the assembly of the system are small (Figure 2).

To obtain a calibration that stays valid for all central catadioptric systems, we use the unified model of Barreto-Geyer [4], [1] and justify its validity for fisheye and spherical sensors (Section II). In Section III we describe the different steps of the projection model. Section IV discusses the initialisation of the parameters and Section V the calibration steps. Finally, we validate the approach on real data.

II. UNIFIED PROJECTION MODEL

For sake of completeness, we present here a slightly modified version of the projection model of Geyer and Barreto [4], [1] (Figure 4). We choose the axis convention depicted in Figure 3. The projection of 3D points can be done in the following steps (the values for (ξ, η) are detailed Table I and the mirror equations are given in Table II) :

- 1) world points in the mirror frame are projected onto the unit sphere, $(\mathcal{X})_{\mathcal{F}_m} \rightarrow (\mathcal{X}_s)_{\mathcal{F}_m} = \frac{\mathcal{X}}{\|\mathcal{X}\|} = (X_s, Y_s, Z_s)$
- 2) the points are then changed to a new reference frame

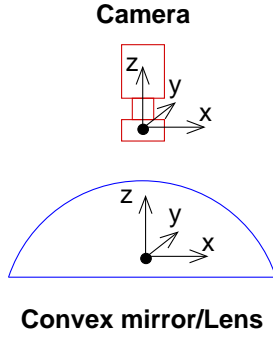


Fig. 3. Axis convention

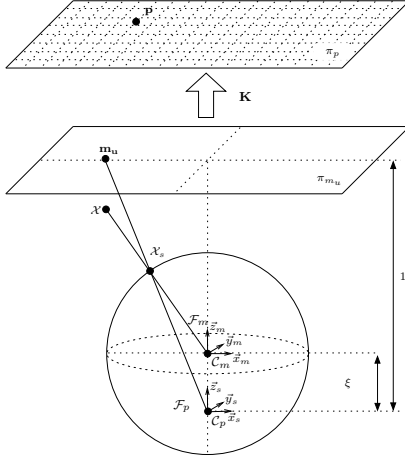


Fig. 4. Unified image formation

centered in $\mathbf{C}_p = (0, 0, \xi)$, $(\mathbf{X}_s)_{\mathcal{F}_m} \rightarrow (\mathbf{X}_s)_{\mathcal{F}_p} = (X_s, Y_s, Z_s + \xi)$

- 3) we then project the point onto the normalised plane, $\mathbf{m} = (\frac{X_s}{Z_s + \xi}, \frac{Y_s}{Z_s + \xi}, 1) = \mathbf{h}(\mathbf{X}_s)$
- 4) the final projection involves a *generalised* camera projection matrix \mathbf{K} (with $[f_1, f_2]^\top$ the focal length, (u_0, v_0) the principal point and α the skew)

$$\mathbf{p} = \mathbf{K}\mathbf{m} = \begin{bmatrix} f_1\eta & f_1\eta\alpha & u_0 \\ 0 & f_2\eta & v_0 \\ 0 & 0 & 1 \end{bmatrix} \mathbf{m} = k(\mathbf{m}) \quad (1)$$

A *generalised* camera projection matrix indicates we are no longer considering the sensor as a separate camera and mirror but as a global device. This is particularly important for calibration because it shows that f and η cannot be estimated independently. We will note $\gamma_i = f_i\eta$.

We will call lifting the calculation of the \mathbf{X}_s corresponding to a given point \mathbf{m} (or \mathbf{p} according to the context) :

$$\mathbf{h}^{-1}(\mathbf{m}) = \begin{bmatrix} \frac{\xi + \sqrt{1 + (1 - \xi^2)(x^2 + y^2)}}{x^2 + y^2 + 1} x \\ \frac{\xi + \sqrt{1 + (1 - \xi^2)(x^2 + y^2)}}{x^2 + y^2 + 1} y \\ \frac{\xi + \sqrt{1 + (1 - \xi^2)(x^2 + y^2)}}{x^2 + y^2 + 1} - \xi \end{bmatrix} \quad (2)$$

TABLE I
UNIFIED MODEL PARAMETERS

	ξ	η
Parabola	1	$-2p$
Hyperbola	$\frac{d}{\sqrt{d^2 + 4p^2}}$	$\frac{-2p}{\sqrt{d^2 + 4p^2}}$
Ellipse	$\frac{d}{\sqrt{d^2 + 4p^2}}$	$\frac{2p}{\sqrt{d^2 + 4p^2}}$
Planar	0	-1
d : distance between focal points $4p$: latus rectum		

TABLE II
MIRROR EQUATIONS

Parabola	$\sqrt{x^2 + y^2 + z^2} = z + 2p$
Hyperbola	$\frac{(z + \frac{d}{2})^2}{a^2} - \frac{x^2}{b^2} - \frac{y^2}{b^2} = 1$
Ellipse	$\frac{(z + \frac{d}{2})^2}{a^2} + \frac{x^2}{b^2} + \frac{y^2}{b^2} = 1$
Plane	$z = -\frac{d}{2}$
With '-' for a hyperbola and '+' for an ellipse : $a = 1/2(\sqrt{d^2 + 4p^2} \pm 2p)$ $b = \sqrt{p(\sqrt{d^2 + 4p^2} \pm 2p)}$	

a) *Validity for fish-eye lenses:* In [13], the authors show that the unified projection model can approximate fisheye projections. A point imaged by perspective projection can be written:

$$\mathbf{m}_u = (x, y, 1) = (\frac{X}{Z}, \frac{Y}{Z}, 1)$$

with $\xi = 1$, the same point imaged by the unified projection model gives:

$$\mathbf{m}_d = (\frac{X}{Z + \|\mathbf{X}\|}, \frac{Y}{Z + \|\mathbf{X}\|}, 1) \quad (3)$$

By algebraic manipulation, we obtain the following relation ($\rho = \sqrt{m_x^2 + m_y^2}$):

$$\rho_u = \frac{2\rho_d}{1 - \rho_d^2}$$

which is the division model, known to approximate a large range of fisheye lenses [2].

b) *Validity for spherical mirrors:* A spherical sensor does not have a single viewpoint. However the results obtained by approximating it by a single projection center give satisfying results [8].

III. PROJECTION MODEL

Compared to the theoretical model, an extra distortion function is added that models misalignment between the mirror and camera but also telecentric distortion for the parabolic case. The different transformations that intervene and the associated unknowns (Figure 2) are:

- 1) rotation and translation from the grid reference frame to the mirror reference frame (extrinsic parameters),
- 2) reflexion on the mirror and projection of the points on the normalised plane (mirror parameter ξ),

- 3) application of the distortion induced by the lens(es) (distortion parameters),
- 4) projection in the image with the generalised camera projection matrix (camera intrinsic parameters).

Had we considered the system as a separate mirror and camera, the distortion would have been applied before the collineation induced by η . The effect is however the same as it consists only in a change of variable.

A. Extrinsic parameters

The extrinsic parameters describe the transformation between the grid frame and the camera frame. Quaternions can be used advantageously to parametrise the rotation [9]. We will note $V^1 = [q_{w1} \ q_{w2} \ q_{w3} \ q_{w4} \ t_{w1} \ t_{w2} \ t_{w3}]$ the unknowns and W the corresponding transformation.

B. Mirror transformation

The mirror transformation was detailed in Section II and consists simply in applying \hbar that depends only on ξ . Let $V^2 = [\xi]$.

C. Distortion

We will consider two main sources of distortion [12] : imperfection of the lens shape that are modeled by radial distortion and improper lens and camera assembly (which can also include misalignment between the camera optical axis and the mirror rotational axis) that generate both radial and tangential errors. In the case of a paracatadioptric sensor, an extra telecentric lens is often added to enable the use of a perspective camera (and not orthographic). The lens has the same size as the mirror border and introduces radial errors.

Five parameters can be used to model the distortion [6]. A three parameter model was chosen for the radial distortion (with $\rho = \sqrt{x^2 + y^2}$) :

$$\mathcal{L}(\rho) = 1 + k_1\rho^2 + k_2\rho^4 + k_5\rho^6 \quad (4)$$

Different models can be used for the tangential distortion according to the relative importance of the alignment and angular errors. We added two extra variables to model the tangential distortion dx :

$$dx = \begin{bmatrix} 2k_3xy + k_4(\rho^2 + 2x^2) \\ k_3(\rho^2 + 2y^2) + 2k_4xy \end{bmatrix} \quad (5)$$

We will note D the distortion function and $V^3 = [k_1 \ k_2 \ k_3 \ k_4 \ k_5]$ the parameters.

D. Camera model

A standard pin-hole model was used for the generalised camera projection P :

$$P(X, V^4) = \begin{bmatrix} \gamma_1(x + \alpha y) + u_0 \\ \gamma_2 y + v_0 \end{bmatrix}, \quad V^4 = [\alpha \ \gamma_1 \ \gamma_2 \ u_0 \ v_0] \quad (6)$$

E. Final equation

Let G be the composition of the different projection functions and let V be the 18 parameters :

$$G = P \circ D \circ H \circ W, \quad V = [V^1 \ V^2 \ V^3 \ V^4]$$

If the grid is composed of m points g_i , with their associated image values e_i , the solution to the calibration problem can be obtained by minimising the following function :

$$F(x) = \frac{1}{2} \sum_{i=1}^m [G(V, g_i) - e_i]^2 \quad (7)$$

This cost function minimises the euclidean distance between the projection of the grid and the extracted values in the image. The corresponding Jacobians can be written as :

$$\frac{\partial G}{\partial V} = \begin{bmatrix} \frac{\partial P}{\partial D} \frac{\partial D}{\partial H} \frac{\partial H}{\partial W} \frac{\partial W}{\partial V^1} \frac{\partial V^1}{\partial V^2} \frac{\partial V^2}{\partial V^3} \frac{\partial V^3}{\partial V^4} \frac{\partial V^4}{\partial V^5} \frac{\partial V^5}{\partial V^6} \frac{\partial V^6}{\partial V^7} \frac{\partial V^7}{\partial V^8} \frac{\partial V^8}{\partial V^9} \frac{\partial V^9}{\partial V^{10}} \frac{\partial V^{10}}{\partial V^{11}} \frac{\partial V^{11}}{\partial V^{12}} \frac{\partial V^{12}}{\partial V^{13}} \frac{\partial V^{13}}{\partial V^{14}} \frac{\partial V^{14}}{\partial V^{15}} \frac{\partial V^{15}}{\partial V^{16}} \frac{\partial V^{16}}{\partial V^{17}} \frac{\partial V^{17}}{\partial V^{18}} \end{bmatrix} \quad (8)$$

IV. INITIALISATION OF THE PARAMETERS

The presented method is based on the non-linear minimisation of (7) that can be solved using for example a Levenberg-Marquardt approach. For the minimisation to be successful, we need to obtain initial estimates of the parameters.

By assuming that the errors from the theoretical model are small, we have $k_1 \approx k_2 \approx k_3 \approx k_4 \approx k_5 \approx \alpha \approx 0$, $\gamma_1 \approx \gamma_2$.

We still need to find the extrinsic parameters of the grids and a value for $[\xi, \gamma, u_0, v_0]$. The image center can be used to initialise the principal point (u_0, v_0) or it can be approximated by the center of the mirror border (assumed to be a circle).

Experimentally, we will show that errors in the values of (ξ, γ) do not have a strong influence over the precision of the extraction process (Section VI-A). We will start by assuming $\xi = 1$ and show that we can estimate linearly the focal from at least four image points that belong to a non-radial line image. Once this step applied, the extrinsic parameters can be estimated from four points of a grid of known size.

A. Mirror border extraction for principal point estimation

The mirror border extraction is not straight forward because of the density of information around the mirror edge. However from an estimate of the mirror radius and center given by the user (for example by clicking on an image), we can refine the values by applying the following steps :

- 1) remove the points that are *too far* from the given circle,
- 2) remove the points on the rays between the center and the edge points,
- 3) from the remaining points, create a list of possible circle centers and radii by random sampling. The median values of the lists give a robust estimate of the mirror center and radius.

B. Estimation of the generalised focal length

From equation (2), with $\xi = 1$, we obtain the following projective equation:

$$\begin{cases} \mathbf{h}^{-1}(\mathbf{m}) \sim \begin{bmatrix} x \\ y \\ f(x, y) \end{bmatrix} \\ f(\mathbf{m}) = \frac{1}{2} - \frac{1}{2}(x^2 + y^2) \end{cases} \quad (9)$$

Let $\mathbf{p} = (u, v)$ be a point in the image plane. Thanks to the estimate of the principal point, we can center the points and calculate a corresponding point $\mathbf{p}_c = (u_c, v_c)$. This point follows the equation on the normalised plane that depends on γ : $\mathbf{p}_c = \gamma \mathbf{m}$:

$$\begin{cases} \mathbf{h}^{-1}(\mathbf{m}) \sim \begin{bmatrix} u_c \\ v_c \\ g(u_c, v_c) \end{bmatrix} \\ g(\mathbf{m}) = \frac{\gamma}{2} - \frac{1}{2\gamma}(u_c^2 + v_c^2) \end{cases} \quad (10)$$

If this point belongs to a line image defined by the normal $\mathbf{N} = [n_x \ n_y \ n_z]^\top$, we obtain:

$$\mathbf{h}^{-1}(\mathbf{m})^\top \mathbf{N} = 0 \iff \begin{cases} n_x u_c + n_y v_c + \frac{a}{2} - b \frac{u_c^2 + v_c^2}{2} = 0 \\ a = \gamma n_z \\ b = \frac{n_z}{\gamma} \end{cases}$$

Let us assume, we have n points $\mathbf{p}_1, \mathbf{p}_2, \dots, \mathbf{p}_n$ belonging to a same line image, they verify the system :

$$\mathbf{P}_{n \times 4} \mathbf{C}_{4 \times 1} = 0$$

with:

$$\mathbf{P} = \begin{bmatrix} u_{c1} & v_{c1} & \frac{1}{2} & -\frac{u_{c1}^2 + v_{c1}^2}{2} \\ u_{c2} & v_{c2} & \frac{1}{2} & -\frac{u_{c2}^2 + v_{c2}^2}{2} \\ \vdots & \vdots & \vdots & \vdots \\ u_{cn} & v_{cn} & \frac{1}{2} & -\frac{u_{cn}^2 + v_{cn}^2}{2} \end{bmatrix}$$

By singular value decomposition (SVD) $\mathbf{P} = \mathbf{U} \mathbf{S} \mathbf{V}^\top$, the least square solution is obtained from the last column of \mathbf{V} associated to the minimal singular value.

To obtain \mathbf{N} and in particular γ from $\mathbf{C} = [c_1 \ c_2 \ c_3 \ c_4]^\top$, the following steps can be applied:

- 1) Calculate $t = c_1^2 + c_2^2 + c_3 c_4$ and check that $t > 0$.
- 2) Let $d = \sqrt{1/t}$, $n_x = c_1 d$ and $n_y = c_2 d$.
- 3) We check that $n_x^2 + n_y^2 > \text{threshold}$ (for example threshold = 0.95) to be sure the line image is not radial,
- 4) If the line is not radial, $n_z = \sqrt{1 - n_x^2 - n_y^2}$.
- 5) Finally, $\gamma = \frac{c_3 d}{n_z}$

If the user selects four points on a line image, we can thus obtain an estimate of the focal length. (This process can in fact be applied to four randomly chosen points in the image to obtain an estimate of the focal length in a RANSAC fashion. This way we obtain an auto-calibration approach.)

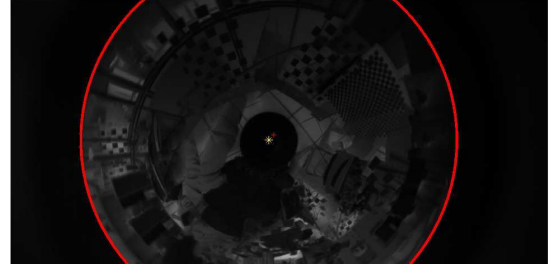


Fig. 5. Extraction of the mirror border



Fig. 6. Estimation of the focal from line image points

V. CALIBRATION STEPS

We suggest the following calibration steps to initialise the unknown parameters, make the associations between the grid points and their reprojection in the image and finally launch the minimisation:

- 1) (Optional) the user selects the mirror center and a point on the mirror border. The values are then reestimated to obtain the center of the circle that is an estimate of the principal point (u_0, v_0) (Figure 5). Alternatively, the center of the image is used,
- 2) the user selects at least four non-radial points belonging to a line image, from here we estimate the focal length γ (Figure 6),
- 3) for each calibration image, the user is then asked to select the four grid corners and the extrinsic parameters are estimated (Figure 7),
- 4) the grid pattern is then reprojected and a subpixel precision extraction is performed (Figure 8),
- 5) we can then perform the global minimisation.

A. Subpixel point extraction

The subpixel point extraction is an important step for the calibration. The method using saddle points [7] is a classical approach and consists in approximating the grid corners by the saddle point of the underlying hyperbolic paraboloid. This assumption stays locally valid for catadioptric sensors and was used for the calibration.

A hyperbolic paraboloid has the following equation :

$$F(x, y) = ax^2 + bxy + cy^2 + dx + ey + f \quad (11)$$

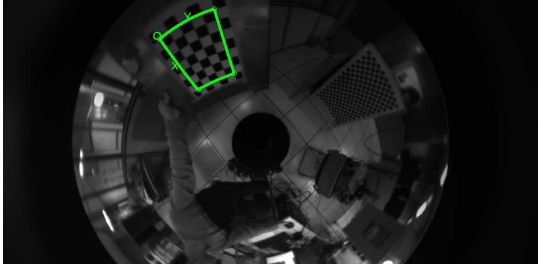


Fig. 7. Grid corners used to initialise the extrinsic grid parameters

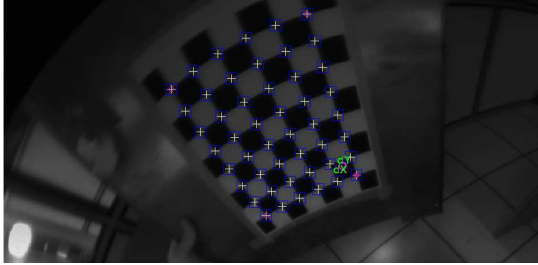


Fig. 8. Subpixel precision extraction of the remaining points

The saddle point can then be obtained from the equations :

$$\begin{cases} 2ax + by + d = 0 \\ bx + 2cy + e = 0 \end{cases} \quad (12)$$

To improve robustness, a Gaussian convolution is generally employed. Figure 9 shows a 3D view of a saddle point generated by a grid corner. Figure 10 shows the subpixel extraction obtained starting from a given point. We can see that the hypothesis of saddle point holds locally for central catadioptric sensors.

VI. EXPERIMENTAL RESULTS

Our calibration approach was tested with four different configurations: parabolic, hyperbolic, wide-angle and spherical. A different camera was used each time.

The parabolic sensor used in this study is comprised of a S80 parabolic mirror (with $p = 16.7$ mm and radius $r = 40$ mm) from RemoteReality with a telecentric lens and a perspective camera with an image resolution of 2048×1016 . The calibration points were obtained from 8 images of a grid of size 5×7 with squares of 42 mm.

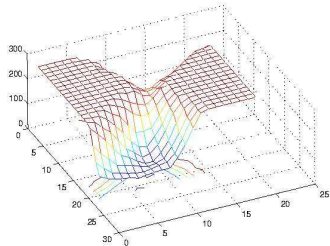


Fig. 9. Saddle point formed by the grid corner

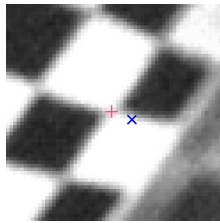


Fig. 10. Subpixel precision extraction

In the hyperbolic case, the mirror is a HM-N15 from Accowle (Seiwapro) (with $a = 37.67$ mm, $b = 24.62$ mm and $r \approx 30$ mm) with a perspective camera with an image resolution of 800×600 . 6 images of a grid of size 7×9 with squares of 30 mm were taken.

The calibration was also tested on a wide-angle sensor ($\sim 70^\circ$) with image resolution 320×240 with 21 images. The grid used was the same as in the hyperbolic.

Finally we tested a low-quality camera comprised of a webcam in front of a spherical ball. The image resolution in this case was 352×264 with 7 images. The grid was the same as in the parabolic case.

To validate our model, we need to obtain a low residual error after minimisation and a uniform distribution of the error. We do not need to check the error distribution over the complete image because the projection function is rotationally symmetric (if we put aside the tangential distortion). We only need to look at the radial distribution of the error. Care was also taken to insure that the grid points were spread out over the whole field of view.

We may note that polynomial approximations are often valid only locally and badly approximate the projection around the edges. This bias will have a negative impact for example when estimation the motion of the camera using a maximum likelihood estimation under the assumption of a Gaussian distribution of the error.

A. Point extraction

TABLE III
INFLUENCE OF ERRORS IN (ξ, η) OVER THE POINT EXTRACTION PROCESS

% error in (ξ, η)	0	10	20	30	40
% of correct points	99.7	88	81	83	76

To analyse the effect of errors on the mirror parameters over the point extraction process, we counted the amount of correctly extracted points obtained after the extrinsic parameters were estimated from four points, and the grid was reprojected followed by a subpixel precision extraction. Table III summarises the results for errors in (ξ, η) ranging from 0 to 40 %. These values indicate that the extraction process presents a certain robustness to imprecise initial values. We still managed to calibrate the sensor with an error of 40 %.

B. Calibration of the parabolic sensor

The mirror border extraction gave an estimate of the principal point $(u_0, v_0) = (983.65, 545.17)$. From points aligned on a line image, we obtained $\gamma = 569$.

After extracting the points and before minimisation, the mean absolute reprojection error was of $[1.92, 2.02]$ pixels.

The calibration step from 7 images gave (with an error interval of 3 times the standard deviation):

- $[\gamma_1, \gamma_2] = [598.66, 597.69] \pm [6.52, 7.75]$,
- $[u_0, v_0] = [980.87, 545.02] \pm [3.73, 4.11]$,

- $[k_1, k_2] = [-0.088, 0.017] \pm [0.007, 0.004]$, (radial distortion)
- The mean absolute error in pixels was finally of $[0.18, 0.31] \pm [0.16, 0.28]$.

Distortion: If we do not take into account the distortion during the calibration, we obtain an error in pixels of $[0.74, 0.82]$ with $3\sigma = [0.59, 0.71]$. The distortion should thus be taken into account to model the telecentric lens distortion and obtain accurate calibration.

C. Calibration of the hyperbolic sensor

A hyperbolic sensor was also calibrated to test the algorithm and show the flexibility obtained from the unified model for central catadioptric cameras.

From the mirror border and four aligned points, we obtain $(u_0, v_0) = (390.67, 317.69)$ for the principal point and $\gamma = 270$ for the generalised focal length.

After this initial step the error in pixels was of $[1.02, 1.24]$. After minimisation, we obtained:

- $[\gamma_1, \gamma_2] = [242.11, 241.05] \pm [9.54, 9.32]$,
- $[u_0, v_0] = [386.54, 321.69] \pm [1.70, 1.61]$,
- $\xi = 0.780$,
- $[k_1, k_2] = [-0.101, 0.013] \pm [0.0120, 0.0013]$ (radial distortion)
- with an error in pixels of $[0.29, 0.30] \pm [0.27, 0.26]$.

Distortion: If we do not take into account the distortion for this sensor, the error does not increase by a great amount (this sensor does not have a wide telecentric lens): $[0.31, 0.31] \pm [0.29, 0.27]$ pixels.

D. Calibration of a wide-angle sensor

For the wide-angle sensor, there is no border so the center of the image was used to initialise the principal point $(u_0, v_0) = (160, 120)$. We obtained $\gamma = 448$ from points on a line image.

The initial error was of $[0.73, 0.69]$ pixels and of $[0.13, 0.14] \pm [0.12, 0.14]$ pixels after minimisation. The final results were:

- $[\gamma_1, \gamma_2] = [635.91, 641.02] \pm [0.38, 0.38]$,
- $[u_0, v_0] = [166.40, 110.23] \pm [1.65, 1.19]$,
- $\xi = 1.40$,
- $[k_1, k_2] = [-0.882.76] \pm [0.087, 1.28]$ (radial distortion)

The strong change in γ after minimisation is probably due to the radial distortion and the change in ξ . The value of ξ does not have a simple interpretation for wide-angle sensors.

E. Calibration of a camera with a spherical mirror

The border extraction process did not prove very efficient in this case so the image center was used as an initial value for the principal point: $(u_0, v_0) = (184, 127)$. The generalised focal was estimated at $\gamma = 137.7$. Before minimisation, the error in the image was of $[0.65, 0.62]$ pixels.

The final results after minimisation gave an error of $[0.16, 0.15] \pm [0.12, 0.11]$ pixels and:

- $[\gamma_1, \gamma_2] = [164.79, 162.84] \pm [9.36, 9.31]$,

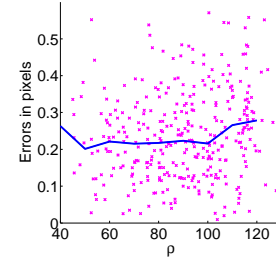


Fig. 11. Pixel error versus distance to center for the spherical case

- $[u_0, v_0] = [183.10, 126.31] \pm [1.33, 0.30]$,
- $\xi = 0.945$,
- $[k_1, k_2, k_4] = [-0.322, 0.067, 0.0043] \pm [7.6, 6.3, 2.0] \times 1e^{-3}$.

Figure 11 shows the radial distribution of the error with a curve representing the median value of the error for different intervals of ρ . The error is distributed uniformly in the image.

CONCLUSION

In this article, we presented a general calibration approach for single viewpoint omnidirectional cameras. The calibration steps are simple without the need to know the mirror parameters. We showed theoretically that the method can be used to model central catadioptric, fisheye and spherical sensors. These results were confirmed experimentally with the calibration of different sensors.

REFERENCES

- [1] J. P. Barreto and H. Araujo. Issues on the geometry of central catadioptric image formation. In *CVPR*, volume 2, pages 422–427, 2001.
- [2] C. Brauer-Burchardt and K. Voss. A new algorithm to correct fish-eye- and strong wide-angle-lens-distortion from single images. In *International Conference on Image Processing*, volume 1, pages 225–228, Oct 2001.
- [3] A. W. Fitzgibbon. Simultaneous linear estimation of multiple view geometry and lens distortion. In *CVPR*, 2001.
- [4] C. Geyer and K. Daniilidis. A unifying theory for central panoramic systems and practical implications. In *ECCV*, pages 445–461, 2000.
- [5] J.-J. Gonzalez-Barbosa. *Vision panoramique pour la robotique mobile : stéréovision et localisation par indexation d'images*. PhD thesis, Université de Toulouse III, 2004.
- [6] J. Heikkilä and O. Silvén. A four-step camera calibration procedure with implicit image correction. In *Computer Vision and Pattern Recognition*, 1997.
- [7] L. Lucchese and S. K. Mitra. Using saddle points for subpixel feature detection in camera calibration targets. In *2002 Asia Pacific Conference on Circuits and Systems*, pages 191–195, Dec 2002.
- [8] B. Micusik. *Two-view geometry of Omnidirectional Cameras*. PhD thesis, Center for Machine Perception, Czech Technical University, 2004.
- [9] E. Salamin. Application of quaternions to computation with rotations. Stanford AI Lab., 1979.
- [10] A. Scaramuzza D., Martinelli and R. Siegwart. A toolbox for easy calibrating omnidirectional cameras. In *IROS*, 2006.
- [11] P. Sturm and S. Ramalingam. A generic concept for camera calibration. In *ECCV*, pages 1–13, 2004.
- [12] J. Weng, P. Cohen, and M. Herniou. Camera calibration with distortion models and accuracy evaluation. *IEEE Transaction on Pattern Analysis and Machine Intelligence*, 14(10):965–980, 1992.
- [13] X. Ying and Z. Hu. Can we consider central catadioptric cameras and fisheye cameras within a unified imaging model? In *European Conference on Computer Vision*, 2004.
- [14] Z. Zhang. Flexible camera calibration by viewing a plane from unknown orientations. In *ICCV*, 1999.