



HAL
open science

Stability and dispersion analysis of improved time discretization for simply supported prestressed Timoshenko systems. Application to the stiff piano string.

Juliette Chabassier, Sébastien Imperiale

► **To cite this version:**

Juliette Chabassier, Sébastien Imperiale. Stability and dispersion analysis of improved time discretization for simply supported prestressed Timoshenko systems. Application to the stiff piano string.. [Research Report] RR-8088, INRIA. 2012, pp.39. hal-00738233v2

HAL Id: hal-00738233

<https://inria.hal.science/hal-00738233v2>

Submitted on 4 Oct 2012

HAL is a multi-disciplinary open access archive for the deposit and dissemination of scientific research documents, whether they are published or not. The documents may come from teaching and research institutions in France or abroad, or from public or private research centers.

L'archive ouverte pluridisciplinaire **HAL**, est destinée au dépôt et à la diffusion de documents scientifiques de niveau recherche, publiés ou non, émanant des établissements d'enseignement et de recherche français ou étrangers, des laboratoires publics ou privés.



**Stability and dispersion
analysis of improved time
discretization for simply
supported prestressed
Timoshenko systems.
Application to the stiff
piano string.**

Juliette Chabassier, Sébastien Imperiale

**RESEARCH
REPORT**

N° 8088

October 2012

Project-Teams Poems and Magique 3d



Stability and dispersion analysis of improved time discretization for simply supported prestressed Timoshenko systems. Application to the stiff piano string.

Juliette Chabassier^{*†}, Sébastien Imperiale[‡] †

Project-Teams Poems and Magique 3d

Research Report n° 8088 — October 2012 — 35 pages

Abstract: We study the implicit time discretization of piano strings governing equations within the Timoshenko prestressed beam model. Such model features two different waves, namely the flexural and shear waves, that propagate with very different velocities. We present a novel implicit time discretization that reduces the numerical dispersion while allowing the use of a large time step in the numerical computations. After analyzing the continuous system and the two branches of eigenfrequencies associated with the propagating modes, the classical θ -scheme is studied. We present complete new proofs of stability using energy-based approaches that provide uniform results with respect to the featured time step. A dispersion analysis confirms that $\theta = 1/12$ reduces the numerical dispersion, but yields a severely constrained stability condition for the application considered. Therefore we propose a new θ -like scheme, which allows to reduce the numerical dispersion while relaxing this stability condition. Stability proofs are also provided for this new scheme. Theoretical results are illustrated with numerical experiments corresponding to the simulation of a realistic piano string.

Key-words: Prestressed Timoshenko system , Theta schemes , Implicit time discretization , Dispersion analysis , Stability analysis , Energy techniques

* Magique 3d team, Inria Sud Ouest, 200 Avenue de la Vieille Tour, 33 405 TALENCE, France.

† Poems team, Inria Rocquencourt, Le Chesnay, France.

‡ Department of Applied Physics and Applied Mathematics, Columbia University, New York, NY, 10027, USA.

**RESEARCH CENTRE
BORDEAUX – SUD-OUEST**

200 Avenue de la Vieille Tour,
33405 Talence Cedex

Études de stabilité et de dispersion pour un schéma temporel amélioré pour le système de Timoshenko précontraint simplement supporté. Application à la corde de piano raide.

Résumé : Nous étudions la discrétisation implicite en temps des équations permettant de modéliser les cordes de piano, grâce au modèle de poutre précontrainte de Timoshenko. Ce modèle considère la propagation de deux ondes (de flexion et de cisaillement) à des vitesses très différentes. Nous présentons une nouvelle discrétisation en temps implicite qui permet de réduire la dispersion numérique tout en autorisant un grand pas de temps lors des simulations numériques. Après avoir analysé le système continu et ses deux branches de fréquences propres, associées à des modes propres, le θ -schéma classique est étudié. Nous présentons des preuves nouvelles de stabilité, basées sur une approche énergétique et qui fournissent des estimations uniformes par rapport au pas de temps. Une analyse de dispersion confirme que la valeur $\theta = 1/12$ réduit la dispersion numériques, mais conduit à une condition de stabilité très sévère pour l'application considérée. Nous proposons donc un nouveau schéma de type θ -schéma, qui permet de réduire la dispersion numérique tout en relaxant la restriction sur le pas de temps. Des preuves de stabilité sont également fournies pour ce nouveau schéma. Les résultats théoriques sont illustrés par des expériences numériques correspondant à la simulation d'une corde de piano réaliste.

Mots-clés : système de Timoshenko précontraint , theta schémas , discrétisation implicite en temps , analyse de dispersion , analyse de stabilité , techniques d'énergie

Contents

1	Introduction	4
2	Continuous equation	5
2.1	Energy and a priori estimates	7
2.2	Dispersion analysis	8
3	Classical theta-scheme : stability and dispersion analysis	9
3.1	Stability analysis	11
3.1.1	Stability analysis for $\theta \geq 1/4$	12
3.1.2	Stability analysis for $\theta < 1/4$	13
3.2	Dispersion analysis	17
3.3	Numerical illustration	18
4	New theta scheme : stability and dispersion analysis	19
4.1	Stability analysis	19
4.2	Dispersion analysis	22
4.3	Numerical illustration	23
5	Conclusions and prospects	24
A	Proof of Theorem 5	24
B	Definition of the high frequency projection operator and proof of lemma 10	27
C	Proof of Theorem 18	29

1 Introduction

The piano strings can be modeled as linear vibrating rods governed by d'Alembert's equation. This model predicts that the eigenfrequencies of vibrating string are "harmonic", i.e. multiple of a fundamental frequency the so called musical pitch. However, measured spectra appear to be slightly shifted away from the ideal harmonic one. This phenomenon is referred to as inharmonicity and in fact contributes to the tone of the instrument (see [6, 9]). It appears that the diameters of realistic piano string are actually too large to neglect shear deformation and rotational inertia, hence it has been suggested in [16] to model the piano string as a simply supported prestressed Timoshenko beam. This models describes the propagation of transversal displacements and shear angles along the string which are phenomena occurring with high velocities contrasts.

More generally, many physical models consist of coupled transient hyperbolic systems with different types of waves propagating at different velocities (for instance, elastodynamic propagation of shear and pressure waves in soft media or acoustic and elastic waves in poro-elastic media). When considering numerical schemes, a good accuracy is obtained when the discretization parameters are adapted to the time and space scales of these physical phenomena. When different scales are involved in the problem, a standard discretization may not be adapted to the entire range of dynamical phenomena. In [14], which concerns the case of homogeneous isotropic elastodynamics, the authors take advantage of the fact that the elastic S and P waves can be decoupled up to the boundary of the considered domain, by adapting the spatial discretization, within the domain to each wave speed, while the time step is the same for both waves. When such decomposition into elementary modes is not possible, then alternative approaches must be considered. Although local time step procedures are an other interesting point of view, we choose to focus, in this article, on a specific class of implicit time discretizations. This approach is appealing since it allows to choose a large time step hence reducing computational costs. However, one of the main difficulties is then to limit numerical dispersion, which is inherent to most numerical schemes. This dispersion can significantly degrade the results, which is especially detrimental in the context of musical acoustics as the human ear can detect frequency variations of only a few percents.

In the global piano model, the string is only an elementary part of the problem which also includes the soundboard, modeled as a 2D Reissner Mindlin plate, and the sound radiation in the 3D domain. When considering a standard piano note, taking into account frequencies up to 10 kHz are necessary in order to represent the physics accurately. Hence, the spatial discretization of the 3D domain must represent wave lengths down to a few centimeters, and given the size of the problem, an explicit strategy must be adopted for the time discretization of the sound propagation problem. Unfortunately, the maximal time step allowed to ensure the stability of the 3D problem is too large to account for the physical phenomena occurring in the string (which would require a relatively to small time step if using a classical leap frog scheme). However it seems unreasonable to use such a small time step, since for the piano model, the resolution of the 3D problem is by far the most costly operation. Therefore, as mentioned before, the use of implicit methods to discretize the piano string equations is not only appealing but also necessary to allow the use of large time step for the global coupled problem.

After being discretized using continuous finite elements, the considered problem reduces to a set of hyperbolic coupled ODEs (see (23) for the exact definition). Newmark scheme may then be chosen to deal with the time discretization of this ODE system (see chapter XX of [8]). This scheme, that is widely employed in mechanical applications, depends on two positive real num-

bers θ and δ . For $\delta < 1/2$, the Newmark scheme is dissipative and first order accurate. When $\delta = 1/2$, it is at least second-order accurate and preserves the energy of the discretized problem. In this case, it only depends on the parameter θ , it is therefore referred to as the θ -scheme. For $\theta \neq 0$, this scheme, whose benefits are a less restrictive stability condition (if any) and an improved accuracy, leads to the inversion of a linear system at each time step, which is sometimes considered to be too expensive compared to explicit schemes (i.e. the case $\theta = 0$). In this study and as discussed before, we are willing to use implicit schemes if it allows to obtain good accuracy with a large time step. Therefore the θ -scheme will be our starting point to derive an improved time discretization.

This paper is divided into 3 main sections. First, in section 2, we study the continuous system of PDEs of the simply supported prestressed Timoshenko beam and give an energy identity that leads to a-priori estimates on the solution's norm. Then the eigenfrequencies are derived. These steps will be reproduced at a discrete level in sections 3 and 4 to construct and study numerical schemes : the numerical stability is analyzed using energy estimates and the consistency through the calculation of the discrete eigenfrequencies.

In section 3 we discuss the classical properties of the θ -schemes: they preserve an energy-like discrete quantity, which is positive for any Δt when $\theta \geq 1/4$, or if Δt is smaller than a maximal value when $\theta < 1/4$. We provide a stability proof using standard arguments based on the proof in the continuous case for $\theta \geq 1/4$, and provide a new proof for $\theta < 1/4$, which remains valid for Δt at the stability limit, as opposed to the intuitive extension of the former classical proof. We show, through a discrete dispersion analysis of θ -schemes that the value $\theta = 1/12$ reduces the numerical dispersion, but leads to a very restrictive CFL condition when applied to realistic piano strings.

Finally section 4 is concerned with the development and analysis of new θ -schemes, based on two different θ -approximations (defined by relation (28)) of the different wave propagating waves in the considered system. By adequately choosing two different values of θ we show that it is possible to construct stable schemes that reduce the numerical dispersion while allowing the use of a relatively large time-step.

All stability proofs of section 2, 3 and 4 will be done using energy techniques, which can easily be adjusted when dissipative terms, couplings or even non linear terms (see [4]) are added to the model (as opposed to Fourier techniques).

2 Continuous equation

The prestressed Timoshenko model considers two unknowns $(u, \varphi): \mathbb{R}^+ \times [0, L] \rightarrow \mathbb{R}$ which stand respectively for the transversal displacement (m) and the shear angle (in radians) of the cross section of the the string. We denote L (m) its length, T_0 (N) the tension at rest, S (m²) the cross section's area, ρ (kg·m⁻³) the density, I (m⁴) the inertia momentum, E (Pa) the Young's modulus, G (Pa) the shear modulus, and $\kappa \in [0, 1]$ the shear coefficient introduced in [10] and which value is discussed in [7]. Finally we assume that these physical parameters are positive and that $ES > T_0$ (which is true in practice for piano strings). Moreover, we consider "simply supported" boundary conditions (zero displacement and zero torque).

The system reads: Find (u, φ) such that $\forall x \in]0, L[, \forall t > 0$,

$$\begin{cases} \rho S \frac{\partial^2 u}{\partial t^2} - T_0 \frac{\partial^2 u}{\partial x^2} + SG\kappa \frac{\partial}{\partial x} \left(\varphi - \frac{\partial u}{\partial x} \right) = \sigma, \\ \rho I \frac{\partial^2 \varphi}{\partial t^2} - EI \frac{\partial^2 \varphi}{\partial x^2} + SG\kappa \left(\varphi - \frac{\partial u}{\partial x} \right) = 0, \end{cases} \quad (1)$$

with boundary conditions

$$u(x=0, t) = 0, \quad u(x=L, t) = 0, \quad \partial_x \varphi(x=0, t) = 0, \quad \partial_x \varphi(x=L, t) = 0, \quad (2)$$

and initial conditions

$$u(x, t=0) = u_0(x), \quad \varphi(x, t=0) = \varphi_0(x), \quad \partial_t u(x, t=0) = u_1(x), \quad \partial_t \varphi(x, t=0) = \varphi_1(x), \quad (3)$$

where σ stands for a source term (which will come from the interaction with the hammer, in the context of the piano, see [16], chapter I.2). In order to give existence and uniqueness properties we define the functional space naturally associated with simply supported boundary conditions

$$\mathbf{U}_0 = \{U \in H_0^1([0, L]) \times H^1([0, L])\}. \quad (4)$$

System of equations (1), (2), (3) can be written as: Find $U \in \mathbf{U}_0$ such that $\forall x \in [0, L], \forall t > 0$,

$$\begin{cases} M \partial_t^2 U - \partial_x (A \partial_x U + BU) + CU + {}^t B \partial_x U = M \Sigma, \\ U(x, t=0) = U_0(x), \quad \partial_t U(x, t=0) = U_1(x), \\ \partial_x \varphi(x=0, t) = 0, \quad \partial_x \varphi(x=L, t) = 0, \end{cases}$$

where $U = {}^t(u, \varphi)$, $\Sigma = M^{-1} {}^t(\sigma, 0)$ and

$$M = \begin{pmatrix} \rho S & 0 \\ 0 & \rho I \end{pmatrix}, \quad A = \begin{pmatrix} T_0 + SG\kappa & 0 \\ 0 & EI \end{pmatrix}, \quad B = \begin{pmatrix} 0 & -SG\kappa \\ 0 & 0 \end{pmatrix}, \quad C = \begin{pmatrix} 0 & 0 \\ 0 & SG\kappa \end{pmatrix}. \quad (5)$$

Lemma 1. *The bilinear symmetric form defined for any $U = (u, \varphi) \in \mathbf{U}_0$ and $V = (v, \psi) \in \mathbf{U}_0$ by:*

$$\langle U, V \rangle_{\mathbf{U}_0} = \int_0^L T_0 \partial_x u \partial_x v + \int_0^L EI \partial_x \varphi \partial_x \psi + \int_0^L SG\kappa (\varphi - \partial_x u)(\psi - \partial_x v), \quad (6)$$

is a scalar product on \mathbf{U}_0 . Hence \mathbf{U}_0 is a Hilbert space with the induced norm denoted $\|\cdot\|_{\mathbf{U}_0}$.

Let us now introduce the operator associated with the prestressed Timoshenko system (1):

$$\mathcal{T}(U) = \mathcal{T}(u, \varphi) = \begin{pmatrix} T_0 \frac{\partial^2 u}{\partial x^2} - SG\kappa \frac{\partial}{\partial x} \left(\varphi - \frac{\partial u}{\partial x} \right) \\ EI \frac{\partial^2 \varphi}{\partial x^2} - SG\kappa \left(\varphi - \frac{\partial u}{\partial x} \right) \end{pmatrix} \quad (7)$$

and the functional space which is naturally induced: $D(\mathcal{T}) = \left\{ U \in \mathbf{U}_0, \text{ such that } \mathcal{T}(U) \in (L^2([0, L]))^2 \right\}$.

Theorem 2 (Unique strong solution). *If $\Sigma \in \mathcal{C}^1(0, T; L^2([0, L]))$, there exists a unique strong solution to (1)-(2)-(3)*

$$(u, \varphi) \in \mathcal{C}^2(0, T; (L^2([0, L]))^2) \cap \mathcal{C}^1(0, T; \mathbf{U}_0) \cap \mathcal{C}^0(0, T; D(\mathcal{T})). \quad (8)$$

PROOF. This result is a simple application case of Hille Yosida theorem, using lemma 1. □

2.1 Energy and a priori estimates

Definition 2.1. We will use in the following the notation:

$$U \in \mathcal{U}_0, \|U\|_M^2 := \int_0^L MU \cdot U \, dx \quad (9)$$

The next lemma shows the “energy preserving” nature of the system of wave equations (1), (2), (3). Our construction of a stable time discretization of the continuous equations will be based on this conservation property (as for instance in the work of [13], [15], [3]).

Lemma 3 (Energy identity). *Let $U = {}^t(u, \varphi)$ be the solution of (1)-(2)-(3), then*

$$\frac{d\mathcal{E}}{dt} = \int_0^L M \Sigma \cdot \partial_t U, \quad \text{with} \quad \mathcal{E}(t) = \mathcal{E}_k(t) + \mathcal{E}_p(t). \quad (10)$$

where \mathcal{E}_k is the kinetic energy, defined by

$$\mathcal{E}_k(t) = \frac{1}{2} \|\partial_t U\|_M^2 := \frac{1}{2} \int_0^L \rho S |\partial_t u|^2 + \frac{1}{2} \int_0^L \rho I |\partial_t \varphi|^2,$$

and \mathcal{E}_p is the potential energy, defined by

$$\mathcal{E}_p(t) = \frac{1}{2} \|U\|_{\mathcal{U}_0}^2 := \frac{1}{2} \int_0^L T_0 |\partial_x u|^2 + \frac{1}{2} \int_0^L EI |\partial_x \varphi|^2 + \frac{1}{2} \int_0^L SG\kappa |\varphi - \partial_x u|^2.$$

PROOF. This identity is obtained by multiplying (1) by ${}^t(\partial_t u, \partial_t \varphi)$ and doing appropriate integrations by parts. Boundary terms vanish because of simply supported conditions (equations (2)). \square

It is important to understand what the implications of the relation (10) are at the continuous level, in order to later derive equivalent properties at a discrete level. More precisely it will allow us to establish stability conditions for the numerical schemes. For that reason and for the sake of completeness we give the proposition below that is a standard result in the literature (see [12]).

Theorem 4 (A priori estimates). *Let $U = {}^t(u, \varphi)$ be the solution of (1)-(2)-(3) then*

$$\mathcal{E}(t) \leq \left[\sqrt{\mathcal{E}(0)} + \frac{1}{\sqrt{2}} \int_0^t \|\Sigma(\cdot, s)\|_M \right]^2, \quad \text{where} \quad \mathcal{E}(0) = \frac{1}{2} \|U_1\|_M^2 + \frac{1}{2} \|U_0\|_{\mathcal{U}_0}^2. \quad (11)$$

$$\|U(\cdot, t)\|_M \leq \|U_0\|_M + t \sqrt{2\mathcal{E}(0)} + \int_0^t (t-s) \|\Sigma(\cdot, s)\|_M. \quad (12)$$

PROOF. Cauchy-Schwarz inequality on the energy identity gives

$$\left| \frac{d\mathcal{E}}{dt}(t) \right| = \left| \int_0^L M \Sigma \cdot \partial_t U \right| \leq \|\Sigma\|_M \|\partial_t U\|_M \quad (13)$$

The potential energy being positive, we write

$$\mathcal{E}(t) \geq \frac{1}{2} \|\partial_t U\|_M^2 \Rightarrow \|\partial_t U\|_M \leq \sqrt{2\mathcal{E}(t)}. \quad (14)$$

It is useful to notice that

$$\frac{d\mathcal{E}}{dt} = 2\sqrt{\mathcal{E}} \frac{d\sqrt{\mathcal{E}}}{dt} \Rightarrow 2\sqrt{\mathcal{E}} \frac{d\sqrt{\mathcal{E}}}{dt} \leq \|\Sigma\|_M \|\partial_t U\|_M \leq \|\Sigma\|_M \sqrt{2\mathcal{E}} \Rightarrow \frac{d\sqrt{\mathcal{E}}}{dt} \leq \frac{1}{\sqrt{2}} \|\Sigma\|_M$$

thanks to (14). We now integrate over time between 0 and t :

$$\sqrt{\mathcal{E}(t)} - \sqrt{\mathcal{E}(0)} \leq \frac{1}{\sqrt{2}} \int_0^t \|\Sigma(\cdot, s)\|_M ds, \quad (15)$$

which gives (11) with no difficulty. Moreover, we write

$$U(\cdot, t) = U_0(\cdot) + \int_0^t \partial_t U(\cdot, s) ds \quad \Rightarrow \quad \|U\|_M \leq \|U_0(\cdot)\|_M + \int_0^t \underbrace{\|\partial_t U(\cdot, s)\|_M}_{\leq \sqrt{2\mathcal{E}(s)}} ds$$

which gives (12) using (11) and an integration by parts. \square

2.2 Dispersion analysis

On finite domains, the dispersion analysis is the study of standing waves and their associated eigenfrequencies. In the case of the simply supported prestressed Timoshenko beam, these eigenfrequencies can be explicitly given. Our results supplement the work carried out in [11, 2] where implicit expressions are given for several boundary conditions (including the condition given by equation (2)).

Theorem 5 (Eigenfrequencies). *If $U(\cdot, t) \in \mathcal{U}_0$, under the form*

$$U(x, t) = e^{-i2\pi f t} V(x), \quad (16)$$

is solution to (1), (2), then there exists $\ell \in \mathbb{N}^$ such that:*

$$f = f_\ell^\pm = \frac{\omega_\ell^\pm}{2\pi}, \quad \omega_\ell^\pm = \sqrt{\Omega_\ell^\pm}, \quad (17)$$

where

$$\Omega_\ell^- = \frac{\frac{\ell^2 \pi^2}{L^2}(\alpha + \beta) + \alpha\gamma - \sqrt{\Delta_\ell}}{2\alpha\beta} < \Omega_\ell^+ = \frac{\frac{\ell^2 \pi^2}{L^2}(\alpha + \beta) + \alpha\gamma + \sqrt{\Delta_\ell}}{2\alpha\beta}, \quad (18)$$

with

$$\Delta_\ell = \left[\frac{\ell^2 \pi^2}{L^2}(\alpha + \beta) + \alpha\gamma \right]^2 - 4\alpha\beta \left[\gamma(1 - \delta) \frac{\ell^2 \pi^2}{L^2} + \frac{\ell^4 \pi^4}{L^4} \right],$$

where we have defined

$$\alpha = \frac{\rho S}{T_0 + SG\kappa}, \quad \beta = \frac{\rho}{E}, \quad \gamma = \frac{SG\kappa}{EI}, \quad \delta = \frac{SG\kappa}{T_0 + SG\kappa}.$$

PROOF. The proof of this theorem is based on a Fourier transform in time of the system (1), which leads to a condition under which eigenmodes satisfy the boundary conditions (2). The associated eigenfrequencies are the researched real numbers f . The detailed proof is given in A. \square

Two branches of eigenfrequencies arise, which correspond to the two propagating waves in the system: flexural (corresponding to frequencies f_ℓ^-) and shear (corresponding to frequencies f_ℓ^+) waves. Explicit formula (17) can be developed for the first frequencies (ℓ small) of the flexural and shear branches:

Corollary 6. *The first flexural eigenfrequencies of system (1), (2) satisfy, for small $\ell \geq 1$*

$$f_\ell^- = \ell f_0^- (1 + \epsilon \ell^2) + \mathcal{O}(\ell^5), \quad \text{where} \quad f_0^- = \frac{1}{2L} \sqrt{\frac{T_0}{\rho S}}, \quad \epsilon = \frac{\pi^2}{2L^2} \frac{EI}{T_0} \left[1 - \frac{T_0}{ES}\right]. \quad (19)$$

The first shear eigenfrequencies satisfy, for small $\ell \geq 1$

$$f_\ell^+ = f_0^+ (1 + \eta \ell^2) + \mathcal{O}(\ell^4), \quad \text{where} \quad f_0^+ = \frac{1}{2\pi} \sqrt{\frac{SG\kappa}{\rho I}}, \quad \eta = \frac{\pi^2}{2L^2} \frac{EI + IG\kappa}{SG\kappa}. \quad (20)$$

Remark 1 (High frequency behavior).

The high frequency behavior of the flexural branch is given by

$$f_\ell^- \sim \frac{\ell}{2L} \sqrt{\frac{T_0 + SG\kappa}{SG\kappa}}, \quad \text{for } \ell \rightarrow +\infty. \quad (21)$$

On the other hand, The high frequency behavior of the shear branch reads:

$$f_\ell^+ \sim \frac{\ell}{2L} \sqrt{\frac{E}{\rho}}, \quad \text{for } \ell \rightarrow +\infty. \quad (22)$$

Figure 1 illustrates those two branches and their behaviors for the D#1 string of the model D Steinway grand piano whose homogenized parameters are given in table 1.

L	S	ρ	T_0
m	m ²	kg·m ⁻³	N
1.945	1.31×10^{-6}	44290	1328
E	I	G	κ
Pa	m ⁴	Pa	-
2.02×10^{11}	1.78×10^{-14}	1.00×10^{10}	0.95
f_0^-	ϵ	f_0^+	η
Hz	-	Hz	-
38.89	3.51×10^{-5}	1.99×10^5	3.95×10^{-6}

Table 1: Parameter values of the string D#1. These parameters correspond to homogenized properties of experimentally measured piano strings (see [16] for more details).

Remark 2. *In most applications, only the flexural wave of Timoshenko beams is of interest: modeling the shear angle φ is a technical way of conferring inharmonicity to the flexural motion. In the case of the piano, the shear wave is not even transmitted to the structure (see [5]). In consequence, it is important to develop a numerical scheme that reduces numerical dispersion mostly for flexural waves and this will be the objective of the scheme developed in section 4.*

3 Classical theta-scheme : stability and dispersion analysis

We now recall some classical properties of the θ -scheme time discretization of (1), after a space discretization done by a variational method. Energy analysis is chosen to show stability because

such analysis is easily adjustable when dissipative terms, couplings or even nonlinearities are added to the model. First we present a classical proof of stability for $\theta \geq 1/4$, then an innovative one for $\theta < 1/4$ which is still valid when Δt reaches its CFL upper bound. Finally, discrete eigenfrequencies will be calculated and we will see that the specific value $\theta = 1/12$ reduces numerical dispersion, but leads to a severe CFL condition.

Let us consider a variational approximation of (1), with a subspace $\mathbf{U}_h \subset \mathbf{U}_0$ of finite dimension N_h , where h is a small parameter devoted to tend towards zero. The problem becomes a system of ODEs: Find $u_h \in \mathbf{U}_h$ such that $\forall t > 0$,

$$\begin{cases} M_h d_t^2 \mathbf{U}_h(t) + K_h \mathbf{U}_h(t) = M_h \boldsymbol{\Sigma}_h(t), \\ \mathbf{U}_h(0) = u_h^0, \quad \partial_t \mathbf{U}_h(0) = \dot{u}_h^0, \end{cases} \quad (23)$$

where \mathbf{U}_h is the vector of coordinates of u_h in a chosen basis of \mathbf{U}_h , and for all $(\mathbf{U}_h, \mathbf{V}_h) \in \mathbf{U}_h^2$,

$$M_h \mathbf{U}_h \cdot \mathbf{V}_h := \oint_0^L M u_h \cdot v_h, \quad (24)$$

$$K_h \mathbf{U}_h \cdot \mathbf{V}_h := \oint_0^L A \partial_x u_h \cdot \partial_x v_h + \oint_0^L B u_h \cdot \partial_x v_h + \oint_0^L C u_h \cdot v_h + \oint_0^L {}^t B \partial_x u_h \cdot v_h. \quad (25)$$

where \oint denotes the use of a quadrature formula. M_h is a symmetric, positive definite matrix, while K_h is a symmetric positive semi-definite matrix. In what follows we denote by $\{\lambda_{h,\ell}\}$ (ℓ varies from 1 to N_h) the set of positive and increasing eigenvalues of $M_h^{-1} K_h$.

Hypothesis 1. *Let us consider the ordered sets of continuous and discrete eigenvalues:*

- $\Lambda = \{\lambda_i^+ = 4\pi^2 (f_i^+)^2, i \geq 1\} \cup \{\lambda_i^- = 4\pi^2 (f_i^-)^2, i \geq 1\}$ where f_i^\pm are the eigenfrequencies of theorem 5, so that $\Lambda = \{\lambda_i, i \geq 1\}$, with $\lambda_{i-1} \leq \lambda_i$,
- $\Lambda_h = \{\lambda_{h,i}, 1 \leq i \leq N_h\}$, with $\lambda_{h,i-1} \leq \lambda_{h,i}$, the set of eigenvalues of $M_h^{-1} K_h$.

We assume that for a fixed $\ell \in \mathbb{N}^*$, the eigenvalue $\lambda_{h,\ell} \in \Lambda_h$ satisfies for h small enough

$$\lambda_{h,\ell} = \lambda_\ell + \mathcal{O}(h^8). \quad (26)$$

Remark 3 (Finite elements and eigenvalues).

If a spatial discretization is done with p^{th} order finite elements on a regular mesh of size h , we can use a convergence theorem enunciated in [1] to show that hypothesis 1 is true for $p \geq 4$. In section 3.3 and 4.3 numerical results are obtained with fourth order finite elements.

In order to define the time discretization, we introduce a time step $\Delta t > 0$ and define $t^n = n \Delta t$. We denote the approximate unknown \mathbf{U}_h^n :

$$\mathbf{U}_h^n \simeq \mathbf{U}_h(t^n).$$

Applying a θ -scheme to problem (23) gives:

$$\begin{cases} M_h \frac{\mathbf{U}_h^{n+1} - 2\mathbf{U}_h^n + \mathbf{U}_h^{n-1}}{\Delta t^2} + K_h \{\mathbf{U}_h\}_\theta^n = M_h \boldsymbol{\Sigma}_h^n, \\ \mathbf{U}_h^0 = u_h^0, \quad \mathbf{U}_h^1 = u_h^1, \end{cases} \quad (27)$$

where the θ -approximation of $\mathbf{U}_h(t^n)$ is a weighted average on three time steps:

$$\{\mathbf{U}_h\}_\theta^n = \theta \mathbf{U}_h^{n+1} + (1 - 2\theta) \mathbf{U}_h^n + \theta \mathbf{U}_h^{n-1}, \quad (28)$$

which satisfies:

$$\{\mathbf{U}_h\}_\theta^n = (\theta - \frac{1}{4})\Delta t^2 \frac{\mathbf{U}_h^{n+1} - 2\mathbf{U}_h^n + \mathbf{U}_h^{n-1}}{\Delta t^2} + \frac{\mathbf{U}_h^{n+1} + 2\mathbf{U}_h^n + \mathbf{U}_h^{n-1}}{4}. \quad (29)$$

We note that θ -scheme (27) can be written as an explicit scheme with a modified mass matrix:

$$\overline{M}_{h,\theta} \frac{\mathbf{U}_h^{n+1} - 2\mathbf{U}_h^n + \mathbf{U}_h^{n-1}}{\Delta t^2} + K_h \mathbf{U}_h^n = M_h \Sigma_h^n \quad \text{where} \quad \overline{M}_{h,\theta} = M_h + \theta \Delta t^2 K_h \quad (30)$$

This modified mass matrix being positive definite, the numerical scheme admits a unique solution.

Definition 3.1. We will use in the following the notation, for all symmetric semi-definite matrix A_h

$$\forall \mathbf{v} \in \mathbb{R}^{N_h}, \|\mathbf{v}\|_{A_h}^2 := A_h \mathbf{v} \cdot \mathbf{v} \quad (31)$$

3.1 Stability analysis

Stability of the numerical scheme (27) can be shown with energy techniques. First, we will show that any numerical solution satisfies an energy identity. If $\theta \geq 1/4$, this discrete energy is always positive, while if $\theta < 1/4$, the time step Δt must be lower than a maximal value Δt^θ . Then, we will show that the scheme is stable if the energy is positive. This last proof will be done in two steps : if $\theta \geq 1/4$, the proof is classical and the estimation is optimal compared to the estimation obtained at a continuous level, if $\theta < 1/4$, we present an innovative proof based on a spectral decomposition, which is valid even if $\Delta t = \Delta t^\theta$ (as opposed to the more classical proof given in [12]).

Let us begin with the classical energy identity for the θ -scheme.

Lemma 7 (Discrete energy of θ -scheme). *Any numerical solution to (27) satisfies*

$$\frac{\mathcal{E}_\theta^{n+1/2} - \mathcal{E}_\theta^{n-1/2}}{\Delta t} = M_h \Sigma_h^n \cdot \frac{\mathbf{U}_h^{n+1} - \mathbf{U}_h^{n-1}}{2\Delta t} \quad (32)$$

where $\mathcal{E}_\theta^{n+1/2}$ is the discrete energy defined by

$$\mathcal{E}_\theta^{n+1/2} = \mathcal{E}_{k,\theta}^{n+1/2} + \mathcal{E}_{p,\theta}^{n+1/2} \quad (33)$$

where $\mathcal{E}_{k,\theta}^{n+1/2}$ and $\mathcal{E}_{p,\theta}^{n+1/2}$ are respectively the discrete kinetic and potential energies at time $t^{n+1/2}$:

$$\mathcal{E}_{p,\theta}^{n+1/2} = \frac{1}{2} \left\| \frac{\mathbf{U}_h^{n+1} + \mathbf{U}_h^n}{2} \right\|_{K_h}^2 \quad \text{and} \quad \mathcal{E}_{k,\theta}^{n+1/2} = \frac{1}{2} \widetilde{M}_{h,\theta} \frac{\mathbf{U}_h^{n+1} - \mathbf{U}_h^n}{\Delta t} \cdot \frac{\mathbf{U}_h^{n+1} - \mathbf{U}_h^n}{\Delta t}$$

with

$$\widetilde{M}_{h,\theta} = M_h + (\theta - \frac{1}{4})\Delta t^2 K_h. \quad (34)$$

PROOF. We take the scalar product of (27) with a centered approximation of the time derivative of $\mathbf{U}_h(t^n)$, which is $(\mathbf{U}_h^{n+1} - \mathbf{U}_h^{n-1})/2\Delta t$. The first term can directly be factorized, and we use (29) to factorize the second one. Adding the two results and taking into account the contribution of the right hand side gives (32). \square

Lemma 8 (θ -scheme's energy positivity). *The discrete energy (33) is positive if and only if the matrix $\widetilde{M}_{h,\theta}$ is positive, which happens when:*

- if $\theta \geq 1/4$, the energy is positive for any $\Delta t > 0$,
- if $\theta < 1/4$, the energy is positive if and only if

$$\Delta t^2 \rho\left((M_h)^{-1}K_h\right) \leq \frac{4}{1-4\theta} \quad \text{where} \quad \rho\left((M_h)^{-1}K_h\right) = \sup_{\mathbf{v} \neq 0} \frac{(M_h)^{-1}K_h \mathbf{v} \cdot \mathbf{v}}{\mathbf{v} \cdot \mathbf{v}}. \quad (35)$$

PROOF. Since K_h is positive semi-definite, the discrete potential energy is positive. The positivity of the discrete kinetic energy leads to the result. \square

3.1.1 Stability analysis for $\theta \geq 1/4$

Theorem 9 (A priori estimate for $\theta \geq 1/4$). *We suppose that the discrete energy (33) is positive. Let \mathbf{U}_h^n be the numerical solution of (27). For any $n \geq 1$, we have:*

$$\sqrt{\mathcal{E}_\theta^{n+1/2}} \leq \sqrt{\mathcal{E}_\theta^{1/2}} + \frac{\Delta t}{\sqrt{2}} \sum_{\ell=1}^n \|\boldsymbol{\Sigma}_h^\ell\|_{M_h} \quad \text{where} \quad \mathcal{E}_\theta^{1/2} = \frac{1}{2} \left\| \frac{\mathbf{U}_h^1 - \mathbf{U}_h^0}{\Delta t} \right\|_{\widetilde{M}_{h,\theta}}^2 + \frac{1}{2} \left\| \frac{\mathbf{U}_h^1 + \mathbf{U}_h^0}{2} \right\|_{K_h}^2, \quad (36)$$

$$\|\mathbf{U}_h^{n+1}\|_{M_h} \leq \|\mathbf{U}_h^0\|_{M_h} + t^{n+1} \sqrt{2\mathcal{E}_\theta^{1/2}} + \Delta t^2 \sum_{\ell=1}^n \sum_{k=1}^{\ell} \left\| \boldsymbol{\Sigma}_h^k \right\|_{M_h}. \quad (37)$$

PROOF. We use Cauchy-Schwarz inequality on (32), and triangular inequality on the right hand side:

$$\frac{1}{\Delta t} \left| \mathcal{E}_\theta^{n+1/2} - \mathcal{E}_\theta^{n-1/2} \right| \leq \frac{1}{2} \|\boldsymbol{\Sigma}_h^n\|_{M_h} \left[\left\| \frac{\mathbf{U}_h^{n+1} - \mathbf{U}_h^n}{\Delta t} \right\|_{M_h} + \left\| \frac{\mathbf{U}_h^n - \mathbf{U}_h^{n-1}}{\Delta t} \right\|_{M_h} \right]. \quad (38)$$

The discrete potential energy $\mathcal{E}_{p,\theta}^{n+1/2}$ being positive, we get:

$$\left\| \frac{\mathbf{U}_h^{n+1} - \mathbf{U}_h^n}{\Delta t} \right\|_{\widetilde{M}_{h,\theta}} \leq \sqrt{2\mathcal{E}_\theta^{n+1/2}}. \quad (39)$$

Since $\theta - \frac{1}{4} \geq 0$, we have for any $X \in \mathbb{R}^{N_h}$,

$$\|X\|_{M_h} \leq \|X\|_{\widetilde{M}_{h,\theta}}, \quad (40)$$

which implies, with (39), that we can estimate the right hand side of (38):

$$\frac{1}{\Delta t} \left| \mathcal{E}_\theta^{n+1/2} - \mathcal{E}_\theta^{n-1/2} \right| \leq \frac{1}{2} \|\boldsymbol{\Sigma}_h^n\|_{M_h} \left[\sqrt{2\mathcal{E}_\theta^{n+1/2}} + \sqrt{2\mathcal{E}_\theta^{n-1/2}} \right] \quad (41)$$

which gives

$$\frac{1}{\Delta t} \left| \sqrt{\mathcal{E}_\theta^{n+1/2}} - \sqrt{\mathcal{E}_\theta^{n-1/2}} \right| \leq \frac{1}{\sqrt{2}} \|\boldsymbol{\Sigma}_h^n\|_{M_h} \quad (42)$$

and finally

$$\sqrt{\mathcal{E}_\theta^{n+1/2}} \leq \sqrt{\mathcal{E}_\theta^{n-1/2}} + \frac{\Delta t}{\sqrt{2}} \|\Sigma_h^n\|_{M_h} \quad (43)$$

We sum this inequality from iterate $n = 1$, which gives a telescopic sum. We get:

$$\sqrt{\mathcal{E}_\theta^{n+1/2}} \leq \sqrt{\mathcal{E}_\theta^{1/2}} + \frac{\Delta t}{\sqrt{2}} \sum_{\ell=1}^n \|\Sigma_h^\ell\|_{M_h} \quad (44)$$

We bound above the norm of \mathbf{U}_h^{n+1} thanks to the triangular inequality and (39):

$$\|\mathbf{U}_h^{n+1}\|_{M_h} \leq \Delta t \left\| \frac{\mathbf{U}_h^{n+1} - \mathbf{U}_h^n}{\Delta t} \right\|_{M_h} + \|\mathbf{U}_h^n\|_{M_h} \leq \Delta t \sqrt{2\mathcal{E}_\theta^{n+1/2}} + \|\mathbf{U}_h^n\|_{M_h} \leq \sqrt{2}\Delta t \left[\sqrt{\mathcal{E}_\theta^{1/2}} + \frac{\Delta t}{\sqrt{2}} \sum_{\ell=1}^n \|\Sigma_h^\ell\|_{M_h} \right] + \|\mathbf{U}_h^n\|_{M_h},$$

we can again sum from $n = 1$ to obtain:

$$\|\mathbf{U}_h^{n+1}\|_{M_h} \leq \|\mathbf{U}_h^0\|_{M_h} + t^{n+1} \sqrt{2\mathcal{E}_\theta^{1/2}} + \Delta t^2 \sum_{\ell=1}^n \sum_{k=1}^{\ell} \|\Sigma_h^k\|_{M_h}.$$

□

Remark 4 (Optimality of theorem 9). *This estimation is the exact discrete equivalent of the continuous estimations of lemma 3 and theorem 4.*

Remark 5 (Transposition for $\theta < 1/4$). *It is still possible to adapt this proof when $\theta < 1/4$, when the matrix $\widetilde{M}_{h,\theta}$ is not singular, which is the case when Δt is chosen such that (35) is a strict inequality. In this case, the constant of a priori estimates depends on Δt , more precisely one can show that instead of (40) we have*

$$\|X\|_{M_h} \leq \frac{\Delta t^\theta}{((\Delta t^\theta)^2 - \Delta t^2)^{1/2}} \|X\|_{\widetilde{M}_{h,\theta}},$$

where Δt^θ is the maximal time step allowed by relation equation (35). This estimates blows up when Δt reaches Δt^θ , which is not satisfying.

Remark 6. *Similar estimates to those of lemma 9 can be obtained with a different technique (not based on the natural discrete energy $\mathcal{E}_\theta^{n+1/2}$) as in [12]. However, this technique cannot easily be extended if dissipative, coupling or nonlinear terms are added to the modeled problem, whereas the energy technique can. Moreover, it will later be possible to extend our proof to the new numerical scheme we will propose.*

3.1.2 Stability analysis for $\theta < 1/4$

As explained in remark 5, it is not possible to control the M_h norm with the $\widetilde{M}_{h,\theta}$ norm when inequality (35) is an equality, i. e.:

$$\rho_h := \rho\left((M_h)^{-1}K_h\right) = \frac{4}{(1-4\theta)\Delta t^2}. \quad (45)$$

If K_h is singular (which can happen for other boundary conditions than (2)), there exist s eigenvalues of $(M_h)^{-1}K_h$ such that: $\lambda_{h,1} = \dots = \lambda_{h,s-1} = \lambda_{h,s} = 0$. They prevent us from controlling the usual norm of associated eigenvectors with the K_h induced semi-norm:

$$\|X\|_{M_h} \not\leq C \|X\|_{K_h},$$

for any strictly positive constant C . On the other hand, if $\widetilde{M}_{h,\theta}$ is singular (i.e. $\Delta t = \Delta t^\theta$), there exists \tilde{s} such that $\lambda_{h,N_h-\tilde{s}} = \dots = \lambda_{h,N_h-1} = \lambda_{h,N_h} = \frac{4}{(1-4\theta)\Delta t^2}$, which prevents us from controlling the usual norm of associated eigenvectors with the $\widetilde{M}_{h,\theta}$ induced semi-norm:

$$\|X\|_{M_h} \not\leq C \|X\|_{\widetilde{M}_{h,\theta}},$$

for any strictly positive constant C . The original idea of our proof is then to divide the spectrum of $(M_h)^{-1}K_h$ in two parts (either sides of a given frequency), and to write the solution as a projection on the resulting high and low frequency subspaces. We then control the usual high frequency norm with the K_h induced norm, and the usual low frequency norm with the $\widetilde{M}_{h,\theta}$ induced norm; which leads to an energy majoration in both cases since the discrete energy is the sum of the $\widetilde{M}_{h,\theta}$ semi-norm and the K_h semi-norm of linear combinations of the solution at several time steps.

To this purpose we will use a high frequency projector P_h^α , defined below

Definition 3.2. For any symmetric semi-definite matrix \mathcal{R}_h and any positive definite matrix \mathcal{M}_h let $\{W_{h,\ell}\}_{\ell=1}^{N_h}$ be the eigenvectors basis associated to the increasing ordered set of positive real eigenvalues $\{\lambda_{h,\ell}\}_{\ell=1}^{N_h}$ such that

$$\begin{cases} \mathcal{R}_h W_{h,\ell} = \lambda_{h,\ell} \mathcal{M}_h W_{h,\ell}, & 1 \leq \ell \leq N_h, & \lambda_{h,\ell} \geq 0, \\ \mathcal{M}_h W_{h,\ell} \cdot W_{h,m} = \delta_{\ell m}, & 1 \leq \ell, m \leq N_h. \end{cases} \quad (46a)$$

$$(46b)$$

Definition 3.3. For $\alpha \geq 0$, we define P_h^α associated to the family of eigenvectors and eigenvalues by:

$$\forall U_h \in \mathbb{R}^{N_h}, P_h^\alpha U_h = \sum_{\ell=L_\alpha}^{N_h} (\mathcal{M}_h W_{h,\ell} \cdot U_h) W_{h,\ell}, \quad (47)$$

where $L_\alpha \in [1, N_h]$ is the smallest integer such that $\lambda_{L_\alpha} \geq \alpha$.

Using definition 3.2 with

$$\mathcal{M}_h \equiv M_h \text{ and } \mathcal{R}_h \equiv K_h,$$

and applying the result of B (the reader will check that the hypotheses of definition 3.2 are satisfied) we can state the following upper bounds.

Lemma 10. Let $0 < \alpha < \rho(\mathcal{M}_h^{-1}\mathcal{R}_h) \leq \beta$, we have, for any $U_h \in \mathbb{R}^{N_h}$

$$\left\| (I_h - P_h^\alpha) U_h \right\|_{\mathcal{M}_h}^2 \leq \frac{\beta}{\beta - \alpha} (\mathcal{M}_h - \frac{1}{\beta} \mathcal{R}_h) U_h \cdot U_h \quad \text{and} \quad \|P_h^\alpha U_h\|_{\mathcal{M}_h}^2 \leq \frac{1}{\alpha} \|U_h\|_{\mathcal{R}_h}^2 \quad (48)$$

where I_h is the identity matrix of size N_h .

PROOF. See the proof in B. □

In addition to these non trivial identities, the high frequency projector P_h^α satisfies the classical properties

$$P_h^\alpha P_h^\alpha U_h = P_h^\alpha U_h \quad \text{and} \quad \|U_h\|_{\mathcal{M}_h}^2 = \|P_h^\alpha U_h\|_{\mathcal{M}_h}^2 + \|(I_h - P_h^\alpha) U_h\|_{\mathcal{M}_h}^2. \quad (49)$$

Let us now show the stability by energy techniques. The first result is an energy identity.

Lemma 11 (Energy estimate for $\theta < 1/4$). *We suppose that the discrete energy (33) is positive (i.e. condition (35) is satisfied). For all $n \geq 1$, we have*

$$\sqrt{\mathcal{E}_\theta^{n+1/2}} \leq \sqrt{\mathcal{E}_\theta^{1/2}} + \sqrt{2} \gamma(\theta) \Delta t \sum_{\ell=1}^n \left\| \boldsymbol{\Sigma}_h^\ell \right\|_{\mathcal{M}_h}, \quad (50)$$

where $\mathcal{E}_\theta^{n+1/2}$ is given by (33), and

$$\gamma(\theta) = \frac{1}{a(\theta)} + \sqrt{\frac{1}{4 - (1 - 4\theta)a(\theta)^2}}, \quad a(\theta) = \sqrt{\frac{4}{(1 - 4\theta)^{2/3} + (1 - 4\theta)}}. \quad (51)$$

PROOF. As in the other proof for $\theta \geq 1/4$, (32) gives:

$$\frac{1}{\Delta t} \left| \mathcal{E}_\theta^{n+1/2} - \mathcal{E}_\theta^{n-1/2} \right| \leq \underbrace{\left\| \boldsymbol{\Sigma}_h^n \right\|_{\mathcal{M}_h} \left\| \frac{\mathbf{U}_h^{n+1} - \mathbf{U}_h^{n-1}}{2\Delta t} \right\|_{\mathcal{M}_h}}_{\mathcal{I}^n} \quad (52)$$

Let $0 < \alpha \leq \rho(\mathcal{M}_h^{-1} \mathcal{R}_h)$, we can write

$$\mathcal{I}^n \leq \underbrace{\left\| P_h^\alpha \frac{\mathbf{U}_h^{n+1} - \mathbf{U}_h^{n-1}}{2\Delta t} \right\|_{\mathcal{M}_h}}_{\mathcal{J}^n} + \underbrace{\left\| (I_h - P_h^\alpha) \frac{\mathbf{U}_h^{n+1} - \mathbf{U}_h^{n-1}}{2\Delta t} \right\|_{\mathcal{M}_h}}_{\mathcal{L}^n}$$

The ideas is to use lemma (10) on \mathcal{J}^n and on \mathcal{L}^n . To do so we write

$$\Delta t \mathcal{J}^n \leq \left\| P_h^\alpha \frac{\mathbf{U}_h^{n+1} + \mathbf{U}_h^n}{2} \right\|_{\mathcal{M}_h} + \left\| P_h^\alpha \frac{\mathbf{U}_h^n + \mathbf{U}_h^{n-1}}{2} \right\|_{\mathcal{M}_h} \leq \frac{1}{\sqrt{\alpha}} \left\| \frac{\mathbf{U}_h^{n+1} + \mathbf{U}_h^n}{2} \right\|_{\mathcal{R}_h} + \frac{1}{\sqrt{\alpha}} \left\| \frac{\mathbf{U}_h^n + \mathbf{U}_h^{n-1}}{2} \right\|_{\mathcal{R}_h}$$

and

$$\begin{aligned} 2\mathcal{L}^n &\leq \left\| (I_h - P_h^\alpha) \frac{\mathbf{U}_h^{n+1} - \mathbf{U}_h^n}{\Delta t} \right\|_{\mathcal{M}_h} + \left\| (I_h - P_h^\alpha) \frac{\mathbf{U}_h^n - \mathbf{U}_h^{n-1}}{\Delta t} \right\|_{\mathcal{M}_h} \\ &\leq \sqrt{\frac{\beta}{\beta - \alpha}} \left\| \frac{\mathbf{U}_h^{n+1} - \mathbf{U}_h^n}{\Delta t} \right\|_{\mathcal{M}_h - \frac{1}{\beta} \mathcal{R}_h} + \sqrt{\frac{\beta}{\beta - \alpha}} \left\| \frac{\mathbf{U}_h^n - \mathbf{U}_h^{n-1}}{\Delta t} \right\|_{\mathcal{M}_h - \frac{1}{\beta} \mathcal{R}_h}. \end{aligned}$$

We choose

$$\beta = \frac{4}{(1 - 4\theta)\Delta t^2} \geq \rho(\mathcal{M}_h^{-1} \mathcal{R}_h) \quad (53)$$

so that the latter term is the discrete kinetic energy. We also choose $\alpha = a(\theta)^2/\Delta t^2$ with $\alpha < \rho(\mathcal{M}_h^{-1} \mathcal{R}_h)$ and where $a(\theta)$ will be set later. We get

$$\mathcal{I}^n \leq \gamma(\theta) \left(\sqrt{2\mathcal{E}_\theta^{n+1/2}} + \sqrt{2\mathcal{E}_\theta^{n-1/2}} \right) \quad (54)$$

where $\gamma(\theta)$ was given in (51). Coming back to (52), we get

$$\frac{1}{\Delta t} \left| \sqrt{\mathcal{E}_\theta^{n+1/2}} - \sqrt{\mathcal{E}_\theta^{n-1/2}} \right| \leq \sqrt{2} \gamma(\theta) \left\| \boldsymbol{\Sigma}_h^n \right\|_{\mathcal{M}_h} \Rightarrow \sqrt{\mathcal{E}_\theta^{n+1/2}} \leq \sqrt{\mathcal{E}_\theta^{n-1/2}} + \Delta t \sqrt{2} \gamma(\theta) \left\| \boldsymbol{\Sigma}_h^n \right\|_{\mathcal{M}_h}.$$

Adding this telescopic sum from 1 to n , we get

$$\sqrt{\mathcal{E}_\theta^{n+1/2}} \leq \sqrt{\mathcal{E}_\theta^{1/2}} + \Delta t \sqrt{2} \gamma(\theta) \sum_{\ell=1}^n \left\| \boldsymbol{\Sigma}_h^\ell \right\|_{\mathcal{M}_h}. \quad (55)$$

By inspection of the positivity condition (35) we see that this result is true for any

$$a(\theta) \in]0, \sqrt{\frac{4}{1 - 4\theta}}[,$$

the best estimate is obtained when $\gamma(\theta)$ is minimal which happens for $a(\theta)$ given by (51). Unfortunately $\gamma(\theta)$ is still greater than $1/2$, which will prevent us from reaching an ‘‘optimal’’ estimate (by comparison with the estimate obtained at the continuous level) as we did in proposition 9. Note that one can show that

$$\gamma(\theta) \leq \sqrt{2},$$

which is obtained when $\theta = 0$. □

Thanks to lemma 11, it is now possible to establish a uniform a priori estimate on the numerical solution’s M_h norm, which results in the stability of the numerical scheme (27) provided that the discrete energy (33) is positive.

Theorem 12 (A priori estimate for $\theta < 1/4$). *We suppose that the discrete energy (33) is positive (i.e. condition (35) is satisfied). Let \mathbf{U}_h^n be the numerical solution of (27). For any $n \geq 1$, we have*

$$\|\mathbf{U}_h^{n+1}\|_{M_h} \leq \sqrt{2} \|\mathbf{U}_h^0\|_{M_h} + 2\gamma(\theta) t^{n+1} \sqrt{2\mathcal{E}_\theta^{1/2}} + 4\gamma(\theta)^2 \Delta t^2 \sum_{\ell=1}^n \sum_{k=1}^{\ell} \|\boldsymbol{\Sigma}_h^k\|_{M_h}. \quad (56)$$

PROOF. We will again use the frequency decomposition on the solution.

$$\|\mathbf{U}_h^{n+1}\|_{M_h} \leq \underbrace{\|P_h^\alpha \mathbf{U}_h^{n+1}\|_{M_h}}_{\mathcal{M}^n} + \underbrace{\|(I_h - P_h^\alpha) \mathbf{U}_h^{n+1}\|_{M_h}}_{\mathcal{N}^n}. \quad (57)$$

To handle \mathcal{M}^n , we write:

$$\|P_h^\alpha \mathbf{U}_h^{n+1}\|_{M_h} \leq \|P_h^\alpha \mathbf{U}_h^n\|_{M_h} + 2 \left\| P_h^\alpha \frac{\mathbf{U}_h^{n+1} + \mathbf{U}_h^n}{2} \right\|_{M_h} \leq \|P_h^\alpha \mathbf{U}_h^n\|_{M_h} + \frac{2\sqrt{2}}{\sqrt{\alpha}} \sqrt{\mathcal{E}_\theta^{n+1/2}} \leq \|P_h^\alpha \mathbf{U}_h^0\|_{M_h} + \frac{2\sqrt{2}}{\sqrt{\alpha}} \sum_{\ell=1}^n \sqrt{\mathcal{E}_\theta^{\ell+1/2}}.$$

To handle \mathcal{N}^n , we write:

$$\begin{aligned} \|(I_h - P_h^\alpha) \mathbf{U}_h^{n+1}\|_{M_h} &\leq \|(I_h - P_h^\alpha) \mathbf{U}_h^n\|_{M_h} + \Delta t \left\| (I_h - P_h^\alpha) \frac{\mathbf{U}_h^{n+1} - \mathbf{U}_h^n}{\Delta t} \right\|_{M_h} \\ &\leq \|(I_h - P_h^\alpha) \mathbf{U}_h^n\|_{M_h} + \Delta t \sqrt{\frac{4}{4 - \Delta t^2 (1 - 4\theta)\alpha}} \sqrt{2\mathcal{E}_\theta^{n+1/2}}, \end{aligned}$$

finally after successive substitutions we obtain

$$\|(I_h - P_h^\alpha) \mathbf{U}_h^{n+1}\|_{M_h} \leq \|(I_h - P_h^\alpha) \mathbf{U}_h^0\|_{M_h} + \Delta t \sqrt{\frac{4}{4 - \Delta t^2 (1 - 4\theta)\alpha}} \sum_{\ell=1}^n \sqrt{2\mathcal{E}_\theta^{\ell+1/2}}.$$

Combining \mathcal{M}^n and \mathcal{N}^n gives

$$\|\mathbf{U}_h^{n+1}\|_{M_h} \leq \|P_h^\alpha \mathbf{U}_h^0\|_{M_h} + \underbrace{\|(I_h - P_h^\alpha) \mathbf{U}_h^0\|_{M_h} + \left[\frac{2\sqrt{2}}{\sqrt{\alpha}} + 2\Delta t \sqrt{2} \sqrt{\frac{1}{4 - \Delta t^2 (1 - 4\theta)\alpha}} \right] \sum_{\ell=1}^n \sqrt{\mathcal{E}_\theta^{\ell+1/2}}}_{\delta(\theta)}.$$

We set $\alpha = a(\theta)^2 / \Delta t^2$, so that $\delta(\theta) = 2\sqrt{2} \Delta t \gamma(\theta)$. We now use (11) to state that

$$\|\mathbf{U}_h^{n+1}\|_{M_h} \leq \|P_h^\alpha \mathbf{U}_h^0\|_{M_h} + \|(I_h - P_h^\alpha) \mathbf{U}_h^0\|_{M_h} + 2\sqrt{2} \Delta t \gamma(\theta) \sum_{\ell=1}^n \left[\sqrt{\mathcal{E}_\theta^{1/2}} + \sqrt{2} \gamma(\theta) \Delta t \sum_{k=1}^{\ell} \|\boldsymbol{\Sigma}_h^k\|_{M_h} \right].$$

The final result is obtained by noticing that, from property given by equation (49),

$$\|P_h^\alpha \mathbf{U}_h^0\|_{M_h} + \|(I_h - P_h^\alpha) \mathbf{U}_h^0\|_{M_h} \leq \sqrt{2} \|\mathbf{U}_h^0\|_{M_h}.$$

□

The stability result of theorem 12 can be used to state a convergence theorem (at a semi discrete level). To do so, we denote the semi discrete error

$$\mathbf{e}_h^n = \mathbf{U}_h^n - \mathbf{U}_h(t^n)$$

where $\mathbf{U}_h(t^n)$ is the solution of (23) evaluated at time t^n . Then, using a simple Taylor expansion, it is possible to show that \mathbf{e}_h^n satisfies the scheme (27) where the source term Σ_h^n has been substituted by the consistency error (for simplicity we assume here that the initial conditions are zero for the semi-discrete problem). It is then easy to show (see [12]) that, if the solution $\mathbf{U}_h(t^n)$ is regular enough, the consistency error is of order 2 in Δt for the θ -scheme ($\|\Sigma_h^n\|_{M_h} \leq C\Delta t^2$, for all $n \geq 1$ and with C a generic constant depending only on \mathbf{U}_h). Assuming that the restriction on the time step is satisfied, the conclusion of theorem 12 gives for any $n \geq 1$:

$$\|\mathbf{e}_h^n\|_{M_h} \leq \tilde{C} (t^n)^2 \Delta t^2,$$

where \tilde{C} is another generic constant depending only on \mathbf{U}_h .

In the specific case of the piano string, we are specifically interested in the low frequency behavior (for many reasons : the human ear cannot detect pitches higher than 20kHz, the hammer excitation barely exceeds 10kHz, and the spatial discretization with finite elements samples the solution down to a minimal wavelength which results in a maximal frequency). In the following we will focus on establishing accuracy estimates that depend on the frequency, by leading a discrete dispersion analysis.

3.2 Dispersion analysis

Numerical dispersion, which measures in finite domains the deviation of discrete eigenvalues from continuous ones, is an inherent fault in any numerical method (except for very special cases). In this section, we will quantify this deviation, which will give a good assessment on the quality of the approximation and is especially relevant in the context of musical acoustics.

Theorem 13. *If the discrete problem (27) admits a solution of the form $\mathbf{U}_h^n = e^{i2\pi f_h n \Delta t} \mathbf{V}_h^0$, and if the spatial discretization respects hypothesis 1, then there exists a positive integer ℓ such that $f_h = f_{h,\ell}$ with, for h and Δt sufficiently small:*

$$f_{h,\ell} = f_\ell + \frac{f_\ell^3}{2} \left(\frac{1}{12} - \theta \right) \Delta t^2 + \mathcal{O}(\Delta t^4 + h^4) \quad (58)$$

where $f_\ell = f_\ell^\pm$ is one of the eigenfrequencies of the continuous problem given in theorem 5.

PROOF. Although the proof is rather classical we present it for the sake of completeness. As we did in the continuous case (see section 2.2), we consider here a numerical plane wave:

$$\mathbf{U}_h^n = e^{in\omega_h \Delta t} \mathbf{V}_h^0$$

with $\mathbf{V}_h^0 \neq 0$. Then, using this definition of \mathbf{U}_h^n , we get

$$\frac{\mathbf{U}_h^{n+1} - 2\mathbf{U}_h^n + \mathbf{U}_h^{n-1}}{\Delta t^2} = -\frac{4}{\Delta t^2} \sin^2\left(\frac{\omega_h \Delta t}{2}\right) \mathbf{U}_h^n.$$

We set

$$\Omega^2 = \frac{4}{\Delta t^2} \sin^2\left(\frac{\omega_h \Delta t}{2}\right) \in [0, \frac{4}{\Delta t^2}].$$

Homogeneous θ -scheme (27) applied to this plane wave, gives:

$$-\Omega^2 M_h \mathbf{U}_h^n + (1 - \theta \Delta t^2 \Omega^2) K_h \mathbf{U}_h^n = 0.$$

If we denote $\lambda_{h,\ell}$ the eigenvalues of $M_h^{-1}K_h$ we find that there is only a finite number of eigenpulsations to the discrete system, which can be recovered by inverting the relation:

$$\Omega_\ell^2 = (1 - \theta \Delta t^2 \Omega_i^2) \lambda_{h,\ell} \Leftrightarrow \omega_{h,\ell} = \frac{2}{\Delta t} \text{Asin} \left(\frac{1}{2} \sqrt{\frac{\Delta t^2 \lambda_{h,\ell}}{1 + \theta \Delta t^2 \lambda_{h,\ell}}} \right).$$

Dividing by 2π gives the classical expression of discrete eigenfrequencies:

$$f_{h,\ell} = \frac{1}{\pi \Delta t} \text{Asin} \left(\frac{1}{2} \sqrt{\frac{\Delta t^2 \lambda_{h,\ell}}{1 + \theta \Delta t^2 \lambda_{h,\ell}}} \right). \quad (59)$$

It is possible to conduct a Taylor expansion for small enough Δt to get:

$$f_{h,\ell} = \frac{\sqrt{\lambda_{h,\ell}}}{2\pi} + \frac{\lambda_{h,\ell}^{3/2}}{4\pi} \left(\frac{1}{12} - \theta \right) \Delta t^2 + \mathcal{O}(\Delta t^4). \quad (60)$$

Since the continuous eigenfrequencies are $f_\ell = \sqrt{\lambda_\ell}/(2\pi)$, we get the expected result using the hypothesis 1. \square

Remark 7 (Value $\theta = 1/12$). *Equation (58) recalls the well known fact that $\theta = 1/12$ plays a specific role: it sends the numerical dispersion back to fourth order. Unfortunately, this value is lower than $1/4$, hence leads to a conditionally stable scheme (see proposition 8). We will see in section 3.3 that for realistic values of the piano string's coefficients, the CFL condition will be very severe.*

3.3 Numerical illustration

Let us illustrate these results with numerical experiments. We use the D#1 note of a model D Steinway grand piano, whose parameters were given above in table 1. Spatial discretization is done with fourth order finite elements on a 300 points regular mesh, so that hypothesis 1 is satisfied. We choose $\theta = 1/4$ and $\Delta t = 10^{-4}$ s. The right hand side is a pulse located 12.7 cm from one extremity, and we record the string motion along time at a point located 6 cm from the other extremity. Figure 2 shows the discrete Fourier transform obtained from the recorded signal during one second of the transversal displacement, for different frequency ranges : from 0 to 600 Hz in figure 2(a), from 1700 to 2700 Hz in figure 2(b), and from 3300 to 3700 Hz in figure 2(c). The first branch of continuous formula (17) is represented in diamonds (\diamond), theoretical formula of θ -scheme approximation (59) is represented in circles (\circ). We can see that numerical dispersion causes a deviation of discrete eigenfrequencies from continuous eigenfrequencies, which is more and more pronounced as frequency increases. Moreover, theoretical formula (59) gives a very good assessment of the numerical behavior (blue spikes of the Fourier transform), both in low and high frequency ranges.

According to remark 7, the choice $\theta = 1/12$ should reduce numerical dispersion. However, it leads to a conditionally stable scheme, which in our application case, is stable if $\Delta t \leq 3.5 \times 10^{-7}$ s. If we had discretised the classical d'Alembert wave equation, the restriction would have been $\Delta t \leq 5 \times 10^{-6}$ s. The shear wave, that we have modeled in order to account for the inharmonicity of the flexural wave, travels around 14 times faster, hence leads to a more severe CFL condition. This seems a great price to pay, especially as we are not particularly interested in a good approximation of the shear wave (see remark 2). In the remainder of this article we propose a new θ -scheme which allows us to reduce numerical dispersion for the flexural wave, while giving a less restrictive CFL condition.

4 New theta scheme : stability and dispersion analysis

The conclusion drawn in the previous paragraph is the same every time two waves propagate with coupling in the same system, but with very different velocities. In this context, using a conditionally stable scheme will constrain the time step to be adapted to the fastest wave (the shear wave in the Timoshenko system) whereas a larger time step would be sufficient for the slowest wave (the flexural wave in the Timoshenko system). Unconditionally stable schemes would be appealing if they did not induce so much numerical dispersion.

We propose a new time discretization where two different θ -approximations are done in the system, one being adapted to the slow wave and will in practice be done with $\theta = 1/12$ to reduce numerical dispersion, and the other being adapted to the fast wave and will in practice be done with $\theta = 1/4$ to avoid the stability condition. We will follow the same approach as in the previous section: after writing the scheme, we will write a discrete energy identity, a priori estimates on the solution, and lead a dispersion analysis before showing numerical results.

In order to write this scheme, we have to rewrite the continuous system by splitting the contribution to the flexural wave and shear wave. The choice of the splitting is done by focusing on the low frequency behavior of the flexural and shear waves. Corollary 6 shows that the flexural waves travel at speed $\sqrt{T_0/\rho S}$ at low frequency (i.e. small n in equation (19)), which suggests to decompose the matrix A into two sub-matrices:

$$A = \begin{pmatrix} T_0 + SG\kappa & 0 \\ 0 & EI \end{pmatrix} = \underbrace{\begin{pmatrix} T_0 & 0 \\ 0 & 0 \end{pmatrix}}_{\underline{A}} + \underbrace{\begin{pmatrix} SG\kappa & 0 \\ 0 & EI \end{pmatrix}}_{\overline{A}}. \quad (61)$$

We then define two matrices \underline{K}_h and \overline{K}_h as in (25), where \underline{A} , B and C contribute for \underline{K}_h while only \overline{A} contributes for \overline{K}_h . We consider the following scheme, with $(\theta, \overline{\theta}) \in [0, 1/2]^2$:

$$\begin{cases} M_h \frac{\mathbf{U}_h^{n+1} - 2\mathbf{U}_h^n + \mathbf{U}_h^{n-1}}{\Delta t^2} + \underline{K}_h \{\mathbf{U}_h\}_\theta^n + \overline{K}_h \{\mathbf{U}_h\}_{\overline{\theta}}^n = M_h \Sigma_h^n \\ \mathbf{U}_h^0 = u_h^0, \quad \mathbf{U}_h^1 = u_h^1 \end{cases} \quad (62)$$

As we did in order to obtain (30), we can write this new scheme as an explicit scheme with a modified mass matrix:

$$(M_h + \theta \Delta t^2 \underline{K}_h + \overline{\theta} \Delta t^2 \overline{K}_h) \frac{\mathbf{U}_h^{n+1} - 2\mathbf{U}_h^n + \mathbf{U}_h^{n-1}}{\Delta t^2} + K_h \mathbf{U}_h^n = M_h \Sigma_h^n$$

which shows the existence of a unique numerical solution since $M_h + \theta \Delta t^2 \underline{K}_h + \overline{\theta} \Delta t^2 \overline{K}_h$ is always invertible.

4.1 Stability analysis

We present some energy techniques to show the stability of the new $(\theta, \overline{\theta})$ -scheme (62) presented above.

Lemma 14 (Discrete energy of $(\theta, \overline{\theta})$ -scheme). *Any numerical solution to (62) satisfies*

$$\frac{\mathcal{E}_{\theta, \overline{\theta}}^{n+1/2} - \mathcal{E}_{\theta, \overline{\theta}}^{n-1/2}}{\Delta t} = M_h \Sigma_h^n \cdot \frac{\mathbf{U}_h^{n+1} - \mathbf{U}_h^{n-1}}{2\Delta t} \quad (63)$$

where the discrete energy is defined as

$$2\mathcal{E}_{\theta,\bar{\theta}}^{n+1/2} = \left\| \frac{\mathbf{U}_h^{n+1} - \mathbf{U}_h^n}{\Delta t} \right\|_{\widetilde{M}_{h,\theta,\bar{\theta}}}^2 + \left\| \frac{\mathbf{U}_h^{n+1} + \mathbf{U}_h^n}{2} \right\|_{K_h}^2 \quad (64)$$

with

$$\widetilde{M}_{h,\theta,\bar{\theta}} = M_h - \frac{\Delta t^2}{4} \left((1 - 4\theta)\underline{K}_h + (1 - 4\bar{\theta})\overline{K}_h \right) \quad (65)$$

PROOF. Both θ -approximations are written as in expression (29). We then take the scalar product of the scheme with the centered approximation of time derivative of \mathbf{U}_h , and the proof follows as for proposition 7. \square

By a simple rearrangement of the positivity of both terms of (64) we can derive the following sufficient conditions for the positivity of the energy $\mathcal{E}_{\theta,\bar{\theta}}^{n+1/2}$ independently of the solution:

Lemma 15 ($(\theta, \bar{\theta})$ -scheme's energy positivity). *The discrete energy (64) is positive if and only if the matrix $M_{h,\theta,\bar{\theta}}$ is positive. We can give more precise sufficient conditions according to the values of $(\theta, \bar{\theta})$:*

◦ If $\bar{\theta} \geq 1/4$ and $\theta \geq 1/4$, the energy is positive for any $\Delta t > 0$.

◦ If $\bar{\theta} < 1/4$ and $\theta \geq 1/4$, the energy is positive if

$$\Delta t^2 \rho(M_h^{-1} \overline{K}_h) \leq \frac{4}{1 - 4\bar{\theta}} \quad (66)$$

◦ If $\theta < 1/4$ and $\bar{\theta} \geq 1/4$, the energy is positive if

$$\Delta t^2 \rho(M_h^{-1} \underline{K}_h) \leq \frac{4}{1 - 4\theta} \quad (67)$$

◦ If $\bar{\theta} \leq 1/4$ and $\theta \leq 1/4$, the energy is positive if and only if

$$\Delta t^2 \rho \left(M_h^{-1} \left((1 - 4\theta)\underline{K}_h + (1 - 4\bar{\theta})\overline{K}_h \right) \right) \leq 4 \quad (68)$$

PROOF. Only the second and third case deserve some comments. Let us assume that $\bar{\theta} < 1/4$ and $\theta \geq 1/4$. We want the matrix $M_h - (\Delta t^2/4)((1 - 4\theta)\underline{K}_h + (1 - 4\bar{\theta})\overline{K}_h)$ to be positive. Since $-(1 - 4\theta)\underline{K}_h$ is positive, it is enough to verify that $M_h - (\Delta t^2/4)((1 - 4\bar{\theta})\overline{K}_h)$ is a positive matrix and we obtain the condition (66) with basic manipulations (in the same way we can derive (67)). This condition is however not optimal in the general case but easier to check in practice, indeed the sufficient and necessary condition reads

$$\Delta t^2 \rho \left(\left(M_h + \Delta t^2 \frac{1 - 4\theta}{4} \underline{K}_h \right)^{-1} \overline{K}_h \right) \leq \frac{4}{1 - 4\bar{\theta}},$$

which does not permit us to easily give an upperbound on Δt . \square

We are now able to establish an energy identity, for which several cases arise according to the position of $(\theta, \bar{\theta})$ compared to $1/4$.

Lemma 16 (Energy estimate). *We suppose that the discrete energy (64) is positive (i.e. the conditions given by lemma 15 are fulfilled). Let \mathbf{U}_h^n be the numerical solution of (62). For any $n \geq 1$, we have:*

o If $\bar{\theta} \geq 1/4$ and $\theta \geq 1/4$

$$\sqrt{\mathcal{E}_{\theta, \bar{\theta}}^{n+1/2}} \leq \sqrt{\mathcal{E}_{\theta, \bar{\theta}}^{1/2}} + \frac{\Delta t}{\sqrt{2}} \sum_{\ell=1}^n \|\Sigma_h^\ell\|_{M_h},$$

o otherwise

$$\sqrt{\mathcal{E}_{\theta, \bar{\theta}}^{n+1/2}} \leq \sqrt{\mathcal{E}_{\theta, \bar{\theta}}^{1/2}} + \Delta t \sqrt{2} \gamma(\min(\theta, \bar{\theta})) \sum_{\ell=1}^n \|\Sigma_h^\ell\|_{M_h},$$

where $\gamma(\cdot)$ is defined by (51).

PROOF. In this proof, in order to simplify the presentation and without any loss of generality, we assume that $\theta < \bar{\theta}$. The proof for the three different cases will be similar, first to the proof of theorem 9, then to the proof of lemma 11.

First case: $\bar{\theta} \geq 1/4$ and $\theta \geq 1/4$. The proof is similar to the proof of theorem 9 (formally replaced $\widetilde{M}_{h, \theta}$ by $\widetilde{M}_{h, \theta, \bar{\theta}}$ and $\mathcal{E}_\theta^{n+1/2}$ by $\mathcal{E}_{\theta, \bar{\theta}}^{n+1/2}$) if one notices that, since $\theta \geq 1/4$:

$$\left\| \frac{\mathbf{U}_h^{n+1} - \mathbf{U}_h^{n-1}}{2\Delta t} \right\|_{M_h} \leq \left\| \frac{\mathbf{U}_h^{n+1} - \mathbf{U}_h^{n-1}}{2\Delta t} \right\|_{\widetilde{M}_{h, \theta, \bar{\theta}}}.$$

Then using the definition of the energy given by (64) we find

$$\left\| \frac{\mathbf{U}_h^{n+1} - \mathbf{U}_h^{n-1}}{2\Delta t} \right\|_{M_h} \leq \frac{1}{\sqrt{2}} \left(\sqrt{\mathcal{E}_{\theta, \bar{\theta}}^{n+1/2}} + \sqrt{\mathcal{E}_{\theta, \bar{\theta}}^{n-1/2}} \right),$$

the conclusion of the lemma is then a direct application of the steps (41)-(43) use in the proof of theorem 9.

Second case: $\bar{\theta} < 1/4$ and $\theta \geq 1/4$. By setting

$$\mathcal{M}_h \equiv M_h + \frac{\Delta t^2(4\theta - 1)}{4} \underline{K}_h \text{ and } \mathcal{R}_h \equiv \overline{K}_h \quad (69)$$

one can see that the proof of lemma 11 directly applied (just replace $\mathcal{E}_\theta^{n+1/2}$ by $\mathcal{E}_{\theta, \bar{\theta}}^{n+1/2}$). The key point being that

$$\left\| \frac{\mathbf{U}_h^{n+1} - \mathbf{U}_h^{n-1}}{2\Delta t} \right\|_{M_h} \leq \left\| \frac{\mathbf{U}_h^{n+1} - \mathbf{U}_h^{n-1}}{2\Delta t} \right\|_{\mathcal{M}_h},$$

since, by assumption $4\theta - 1 \geq 0$ and $\|(\mathbf{U}_h^{n+1} + \mathbf{U}_h^{n-1})/2\|_{\mathcal{R}_h}^2 \leq 2\mathcal{E}_{\theta, \bar{\theta}}^{1/2}$.

Third case: $\bar{\theta} < 1/4$ and $\theta < 1/4$. In a similar way, we introduce the matrices

$$\mathcal{M}_h \equiv M_h \text{ and } \mathcal{R}_h \equiv \left(\frac{1-4\theta}{1-4\bar{\theta}} \underline{K}_h + \overline{K}_h \right) \quad (70)$$

and extend the proof of lemma 11. To do so we need to use the estimate $\|(\mathbf{U}_h^{n+1} + \mathbf{U}_h^n)/2\|_{\mathcal{R}_h}^2 \leq 2\mathcal{E}_{\theta, \bar{\theta}}^{n+1/2}$, valid since $(1-4\theta)/(1-4\bar{\theta}) < 1$.

□

Theorem 17 (A priori estimate). *We suppose that the discrete energy (64) is positive (i.e. the conditions given by lemma 15 are fulfilled). Let \mathbf{U}_h^n be the numerical solution of (62). For any $n \geq 1$, we have:*

◦ If $\bar{\theta} \geq 1/4$ and $\theta \geq 1/4$

$$\|\mathbf{U}_h^{n+1}\|_{M_h} \leq \|\mathbf{U}_h^0\|_{M_h} + t^{n+1} \sqrt{2\mathcal{E}_{\theta, \bar{\theta}}^{1/2}} + \Delta t^2 \sum_{\ell=1}^n \sum_{k=1}^{\ell} \|\Sigma_h^k\|_{M_h},$$

◦ otherwise

$$\|\mathbf{U}_h^{n+1}\|_{M_h} \leq \sqrt{2} \|\mathbf{U}_h^0\|_{M_h} + 2\gamma(\min(\theta, \bar{\theta})) t^{n+1} \sqrt{2\mathcal{E}_{\theta, \bar{\theta}}^{1/2}} + 4\gamma(\min(\theta, \bar{\theta}))^2 \Delta t^2 \sum_{\ell=1}^n \sum_{k=1}^{\ell} \|\Sigma_h^k\|_{M_h}.$$

PROOF. Again, the proof for the three different cases are similar, first to the proof of theorem 9, then to the proof of lemma 12. When $\bar{\theta} < 1/4$ or $\theta < 1/4$ the proof of lemma 12 must be adapted by choosing \mathcal{M}_h and \mathcal{R}_h as in (69) or (70) (depending of the values of θ and $\bar{\theta}$), the rest of the proof is identical after substituting formally $\mathcal{E}_{\theta}^{n+1/2}$ by $\mathcal{E}_{\theta, \bar{\theta}}^{n+1/2}$ □

Remark 8 (Stability when $\theta = 1/4$). *If the value $\theta = 1/4$ is chosen to approximate the fast wave, we obtain the sufficient stability condition (66) which would be the same if we had applied a classical θ -scheme (with $\bar{\theta}$) on the equation described by the matrix \bar{K}_h corresponding to the slow wave (hence, less restrictive).*

As before, the previous energy identity enabled us to deduce the stability estimates of theorem 17. For the $(\theta, \bar{\theta})$ -scheme this estimate allows us to prove a convergence of order 2 in time. However, as we will see in the next theorem, for specific values of $(\theta, \bar{\theta})$ we can achieve higher order of accuracy for specific estimates (in terms of low frequency dispersion relation).

4.2 Dispersion analysis

Theorem 18. *If the discrete problem (62) admits a solution of the form $\mathbf{U}_h^n = e^{i 2\pi f_h n \Delta t} \mathbf{V}_h^0$, and if the spatial discretization respects hypothesis 1, then there exists a fixed positive integer ℓ , such that $f_h = f_{h, \ell}$ where for h and Δt sufficiently small:*

$$f_{h, \ell} = f_{\ell} + \mathcal{O}(\Delta t^2 + h^4) \quad (71)$$

where f_{ℓ} are the eigenfrequencies of the continuous problem given in theorem 5. Moreover, for small ℓ , $f_{h, \ell} = f_{h, \ell}^+$ or $f_{h, \ell}^-$, where

$$\begin{cases} f_{h, \ell}^- = \ell f_0^- (1 + \epsilon_{\Delta t} \ell^2) + \mathcal{O}(\ell^5 + \Delta t^4 + h^4), & (72a) \\ f_{h, \ell}^+ = f_{0, \Delta t}^+ (1 + \eta_{\Delta t} \ell^2) + \mathcal{O}(\ell^3 + \Delta t^4 + h^4), & (72b) \end{cases}$$

with

$$\begin{cases} \epsilon_{\Delta t} = \epsilon + 2\pi^2 \Delta t^2 \left(\frac{1}{12} - \bar{\theta} \right) (f_0^-)^2, & (73a) \end{cases}$$

$$\begin{cases} f_{0, \Delta t}^+ = f_0^+ \left[1 + (2\pi f_0^+)^2 \left(\frac{1}{12} - \theta \right) \Delta t^2 \right], & (73b) \end{cases}$$

$$\begin{cases} \eta_{\Delta t} = \eta + \frac{\pi^2 (E + G\kappa)}{2\rho L^2} \left(\theta - \frac{1}{12} \right) \Delta t^2, & (73c) \end{cases}$$

where f_0^- , f_0^+ , ϵ and η were defined in the corollary 6.

PROOF. We prove this result by considering the semi discretization in time of the continuous system with our $(\theta, \bar{\theta})$ -scheme. It is then very close to the continuous calculation of eigenfrequencies. More details are shown in C, including the explicit exact theoretical discrete eigenfrequencies in relation (103). □

Remark 9 (Value $\bar{\theta} = 1/12$). *We note that the specific value $\bar{\theta} = 1/12$ exactly provides, for discrete eigenfrequencies of the flexural wave, the same Taylor expansion as in the continuous case given up to $\mathcal{O}(\ell^5)$ by (19) for small ℓ (see the corollary 6). We also notice that up to this term, this branch does not depend on the chosen value for θ .*

4.3 Numerical illustration

Let us illustrate these results with numerical experiments. We use again D#1 note of previous sections, whose parameters are summed up in table 1. Spatial discretization is done with fourth order finite elements on a 300 points regular mesh, as before, so that hypothesis 1 is satisfied. Time discretization is first done with the choice $\bar{\theta} = 1/4$ and $\theta = 1/2$, in order to get an unconditionally stable scheme and to choose $\Delta t = 10^{-4}$ s. As before, we record during one second the transversal displacement of a point located 6 cm from one extremity, and we represent its discrete Fourier transform in figure 3, for different frequency ranges. The first branch of continuous formula (17) is represented in red diamonds, theoretical formula of $(\theta, \bar{\theta})$ -scheme approximation (103) is represented in magenta circles. We can see that the theoretical formula represent very well the numerical behavior, and that numerical dispersion again causes a deviation of discrete eigenfrequencies from continuous eigenfrequencies, which is more and more pronounced as frequency increases.

The main interest of this scheme was to choose, for the slow wave, a value of θ that diminishes numerical dispersion, and for the fast wave, a value of $\bar{\theta}$ that ensures stability. Concretely, let us present a second numerical experiment where $\theta = 1/4$, $\bar{\theta} = 1/12$ and $\Delta t \leq 5 \times 10^{-6}$ s. Figure 4(a) shows the spectrum of the transversal displacement of the numerical solution as well as theoretical continuous (in red diamonds) and discrete (in magenta circles) eigenfrequencies, for a very high frequency range (5500 to 6500 Hz). We can see that numerical dispersion is very low, since the shift from continuous frequencies is only around 1 % at 5500 Hz, which is really good given the “large” chosen time step. Figure 4(b) shows the plot coming from the same experiment conducted with the usual θ -scheme with $\theta = 1/4$, and we can clearly see that numerical dispersion is greater.

The last numerical illustration is presented in figure 5. We compare the explicit theoretical expressions of flexural eigenfrequencies for the continuous system (1)-(2), for the classical θ -scheme (27) and for our new $(\theta, \bar{\theta})$ -scheme (62). The explicit formulas (respectively (17), (59) and (103)) are used, since they have proven to very well reflect the numerical behavior of totally discrete schemes. Different time steps are considered $\Delta t = 10^{-4}$ s, $\Delta t = 5 \times 10^{-6}$ s. As explained in remark 11 of C, relation (94) is no longer invertible after a certain rank, which depends on the time step (the maximal frequency for which the explicit formula is valid is shown in dashed black line). This is why the maximal considered rank changes between the subfigures. Figure 5 shows that the flexural dispersion deviation is always improved for the considered $(\theta, \bar{\theta})$ -

scheme. However this improvement is less pronounced when the time step Δt decreases. This is explained by the fact that the $(\theta, \bar{\theta})$ -scheme is designed to improve the approximation of the low frequency components of the solution. If Δt is chosen relatively large then the $(\theta, \bar{\theta})$ -scheme offers a real advantage because the classical θ -scheme is not even able to catch the low frequency behavior (see figure 5(a)). If Δt is chosen very small then the low frequency components are well approximated by the two schemes and the benefit of the $(\theta, \bar{\theta})$ -scheme is less spectacular even for the medium-frequency components of the solution (see figure 5(b)).

5 Conclusions and prospects

A simply supported prestressed Timoshenko beam can be used to model the motion of a stiff string as a piano string, for example. This system of PDEs describes the coupled propagation of flexural and shear waves, which have very different velocities. This article was concerned with finding a time discretization that reduced numerical dispersion while allowing quite a large time step. First, the classical θ -scheme were investigated, for which a new proof of stability was provided based on energy methods. This scheme is unconditionally stable when $\theta \geq 1/4$ and stable under a CFL condition when $\theta < 1/4$. A dispersion analysis recalled that the value $\theta = 1/12$ minimized numerical dispersion, but led to a very restrictive upper bound on the time step. We proposed a new time discretization based on two different θ -approximations according to the considered wave in the system. The stability analysis was done with energy methods, and the dispersion analysis was done on the semi-discrete scheme. In practice, the slow wave was evaluated with $\theta = 1/12$ to reduce numerical dispersion, while the fast wave was evaluated with $\theta = 1/4$ to avoid the severe stability condition. Numerical experiments showed that this new scheme gives very good results with no computational overcost.

The dissipative case is a very easy improvement of the work presented here. A centered term can be added to each damped equation, and all proofs based on energy identities still apply in this case. It would be interesting to see how this idea adapts to other wave systems where different velocities arise (as S and P waves for elastodynamics propagation in soft media, or acoustic and elastic waves in poro-elastic media, for instance). Another natural extension of this work would be to investigate the possibility to gain consistency orders. The authors have proposed in [3] new fourth order schemes based on the classical θ -scheme and modified equation technique, and it could be of interest to apply the same method on the new scheme presented above.

A Proof of Theorem 5

In order to obtain a dispersion relation, let us do a Fourier transform in time on the homogeneous system (1), with ω the Fourier variable:

$$\begin{cases} -\rho S \omega^2 \hat{u} - (SG\kappa + T_0) \frac{\partial^2 \hat{u}}{\partial x^2} + SG\kappa \frac{\partial \hat{\varphi}}{\partial x} = 0, \\ -\rho I \omega^2 \hat{\varphi} - EI \frac{\partial^2 \hat{\varphi}}{\partial x^2} - SG\kappa \frac{\partial \hat{u}}{\partial x} + SG\kappa \hat{\varphi} = 0. \end{cases} \quad (74)$$

This system can be written as a first order formulation. Let $Y = {}^t(\hat{u}, \hat{\varphi}, \partial_x \hat{u}, \partial_x \hat{\varphi})$. Then (74) is equivalent to the following system, with four unknowns:

$$\partial_x Y + \mathbb{A}(\omega)Y = 0, \quad \text{where} \quad \mathbb{A}(\omega) = \begin{pmatrix} 0 & 0 & -1 & 0 \\ 0 & 0 & 0 & -1 \\ a(\omega) & 0 & 0 & d(\omega) \\ 0 & b(\omega) & c(\omega) & 0 \end{pmatrix} \quad (75)$$

with

$$a(\omega) = \underbrace{\frac{\rho S}{T_0 + SG\kappa}}_{\alpha} \omega^2, \quad b(\omega) = \underbrace{\frac{\rho I}{EI}}_{\beta} \omega^2 - \underbrace{\frac{SG\kappa}{EI}}_{\gamma}, \quad c = \underbrace{\frac{SG\kappa}{EI}}_{\gamma}, \quad d(\omega) = -\underbrace{\frac{SG\kappa}{T_0 + SG\kappa}}_{\delta}. \quad (76)$$

This system of coupled ODEs can be solved by studying the eigenvalues of the matrix $\mathbb{A}(\omega)$, ie. the complex numbers $\lambda(\omega)$ such that

$$\det(\mathbb{A} - \lambda I_4) = 0 \Leftrightarrow \lambda^4 + \lambda^2(a + b - cd) + ab = 0. \quad (77)$$

This equation is a fourth degree equation that couples eigenvalues λ and Fourier variable ω :

$$\lambda^4 + (\alpha + \beta)\omega^2 \lambda^2 + \alpha\beta\omega^4 - \gamma(1 - \delta)\lambda^2 - \alpha\gamma\omega^2 = 0. \quad (78)$$

Only even degrees are involved. We introduce $\Lambda = \lambda^2$ and $\Omega = \omega^2$, giving the equation:

$$\Lambda^2 + [(\alpha + \beta)\Omega - \gamma(1 - \delta)]\Lambda + \alpha\beta\Omega^2 - \alpha\gamma\Omega = 0. \quad (79)$$

This second order equation seen as a function of Λ can be solved by evaluating its discriminant:

$$\Delta(\Omega) = [(\alpha + \beta)\Omega - \gamma(1 - \delta)]^2 - 4\alpha\Omega(\beta\Omega - \gamma) = (\alpha - \beta)^2 \Omega^2 + [4\alpha\gamma - 2\gamma(\alpha + \beta)(1 - \delta)]\Omega + \gamma^2(1 - \delta)^2.$$

This discriminant is itself a second order polynomial function in Ω whose roots of Δ are negative. Indeed,

$$\begin{aligned} \Delta(\Omega = 0) &= \gamma^2(1 - \delta)^2 \geq 0, \\ \Delta'(\Omega = 0) &= 4\alpha\gamma - 2\gamma(\alpha + \beta)(1 - \delta) \geq 0 \text{ since } ES - T_0 \geq 0, \\ \Delta''(\Omega) &= 2(\alpha - \beta)^2 \geq 0. \end{aligned}$$

The previous inequalities imply that $\Delta(\Omega) > 0$ for $\Omega > 0$. Since we are interested in $\omega \in \mathbb{R} \Rightarrow \Omega \geq 0$, equation (79) has two different real solutions $\Lambda^- \equiv \Lambda^-(\Omega)$ and $\Lambda^+ \equiv \Lambda^+(\Omega)$, as soon as $\Omega \neq 0$, they read:

$$\Lambda^-(\Omega) = \frac{\gamma(1 - \delta) - (\alpha + \beta)\Omega - \sqrt{\Delta(\Omega)}}{2}, \quad \Lambda^+(\Omega) = \frac{\gamma(1 - \delta) - (\alpha + \beta)\Omega + \sqrt{\Delta(\Omega)}}{2}.$$

One can show that they satisfy:

$$\Lambda^-(\Omega) \leq 0 \quad \forall \Omega \geq 0, \quad \Lambda^+(\Omega) \leq 0 \Leftrightarrow \Omega \geq \frac{\gamma}{\beta}. \quad (80)$$

Hence, matrix \mathbb{A} has four eigenvalues which satisfy:

$$(\lambda_{\pm}^-)^2 = \Lambda^- \text{ and } (\lambda_{\pm}^+)^2 = \Lambda^+. \quad (81)$$

Their expression depends on the value of Ω : if $0 \geq \Omega < \gamma/\beta$, only $\lambda_{\pm}^- = \pm i\sqrt{|\Lambda^-(\Omega)|}$ corresponds to imaginary (hence propagative) eigenvalues, whereas if $\Omega \geq \gamma/\beta$, $\lambda_{\pm}^- = \pm i\sqrt{|\Lambda^-(\Omega)|}$ and $\lambda_{\pm}^+ = \pm i\sqrt{|\Lambda^+(\Omega)|}$ correspond to imaginary eigenvalues.

Solutions of (75) can now be written in the basis of $(e^{\lambda_-^-x}, e^{\lambda_+^-x}, e^{\lambda_-^+x}, e^{\lambda_+^+x})$: there exists four functions (P, Q, R, S) of ω such that:

$$\hat{u}(x, \omega) = P(\omega)e^{\lambda_-^-x} + Q(\omega)e^{\lambda_+^-x} + R(\omega)e^{\lambda_-^+x} + S(\omega)e^{\lambda_+^+x}. \quad (82)$$

Any solution satisfies the boundary conditions (2) which can both be expressed on \hat{u} :

$$\hat{u}(x=0, \omega) = \hat{u}(x=L, \omega) = \hat{u}''(x=0, \omega) = \hat{u}''(x=L, \omega) = 0$$

and give compatibility equations:

$$(L1) P + Q + R + S = 0, \quad (L2) P(\lambda_-^-)^2 + Q(\lambda_+^-)^2 + R(\lambda_-^+)^2 + S(\lambda_+^+)^2 = 0,$$

$$(L3) Pe^{\lambda_-^-L} + Qe^{\lambda_+^-L} + Re^{\lambda_-^+L} + Se^{\lambda_+^+L} = 0, \quad (L4) P(\lambda_-^-)^2 e^{\lambda_-^-L} + Q(\lambda_+^-)^2 e^{\lambda_+^-L} + R(\lambda_-^+)^2 e^{\lambda_-^+L} + S(\lambda_+^+)^2 e^{\lambda_+^+L} = 0$$

After algebraic manipulations, we get:

$$P[e^{\lambda_-^-L} - e^{\lambda_+^-L}] + R[e^{\lambda_-^+L} - e^{\lambda_+^+L}] = 0 \quad P(\Lambda^-)[e^{\lambda_-^-L} - e^{\lambda_+^-L}] + R(\Lambda^+)[e^{\lambda_-^+L} - e^{\lambda_+^+L}] = 0.$$

Finding a non-zero solution \hat{u} is only possible if previous system has a non-zero solution. It must be singular, which gives:

$$\det \begin{pmatrix} e^{\lambda_-^-L} - e^{\lambda_+^-L} & e^{\lambda_-^+L} - e^{\lambda_+^+L} \\ (\Lambda^-)[e^{\lambda_-^-L} - e^{\lambda_+^-L}] & (\Lambda^+)[e^{\lambda_-^+L} - e^{\lambda_+^+L}] \end{pmatrix} = 0 \Leftrightarrow [e^{\lambda_-^-L} - e^{\lambda_+^-L}](\Lambda^+ - \Lambda^-)[e^{\lambda_-^+L} - e^{\lambda_+^+L}] = 0.$$

Since Λ^+ and Λ^- are distinct, two cases arise: $e^{\lambda_-^-L} - e^{\lambda_+^-L} = 0$ or $e^{\lambda_-^+L} - e^{\lambda_+^+L} = 0$. this is equivalent to

$$\sin(\sqrt{|\Lambda^-|}L) = 0 \quad \text{or} \quad \begin{cases} \sinh(\sqrt{\Lambda^+}L) = 0 & \text{if } \Omega < \gamma/\beta, \\ \sin(\sqrt{|\Lambda^+|}L) = 0 & \text{if } \Omega \geq \gamma/\beta, \end{cases}$$

which implies

$$\begin{cases} \exists \ell \in \mathbb{Z}^*, \sqrt{|\Lambda^-|}L = \ell\pi, \text{ or } \sqrt{\Lambda^+} = 0 & \text{if } \Omega < \gamma/\beta, \\ \exists \ell \in \mathbb{Z}^*, \sqrt{|\Lambda^-|}L = \ell\pi, \text{ or } \exists m \in \mathbb{Z}^*, \sqrt{|\Lambda^+|}L = m\pi & \text{if } \Omega \geq \gamma/\beta. \end{cases} \quad (83)$$

This illustrates the fact that since the domain is finite, only discrete wave numbers can arise in the string. In order to find the associated eigenfrequencies that satisfy (83), we must solve:

$$\Lambda^-(\Omega) = \frac{\gamma(1-\delta) - (\alpha + \beta)\Omega - \sqrt{\Delta(\Omega)}}{2} = -\frac{\ell^2\pi^2}{L^2}, \quad (84)$$

$$\Lambda^+(\Omega) = \frac{\gamma(1-\delta) - (\alpha + \beta)\Omega + \sqrt{\Delta(\Omega)}}{2} = -\frac{m^2\pi^2}{L^2}. \quad (85)$$

One can easily show the uniqueness of Ω_{ℓ}^- and Ω_m^+ such that

$$\Lambda^-(\Omega_{\ell}^-) = -\frac{\ell^2\pi^2}{L^2} \quad \text{and} \quad \Lambda^+(\Omega_m^+) = -\frac{m^2\pi^2}{L^2}.$$

The asymptotic behavior of these solutions are studied for Timoshenko beam (ie for $T_0 = 0$) in [11, 2]. For general boundary conditions, these equations must be solved numerically.

In this case (simply supported conditions), it is possible to explicitly express Ω_ℓ^- and Ω_m^+ . Indeed, $\Lambda^-(\Omega_\ell^-)$ is by definition solution of the second order equation (79) parametrized by Ω_ℓ^- , so it satisfies:

$$(\Lambda^-(\Omega_\ell^-))^2 + [(\alpha + \beta)\Omega_\ell^- - \gamma(1 - \delta)]\Lambda^-(\Omega_\ell^-) + \alpha\beta(\Omega_\ell^-)^2 - \alpha\gamma\Omega_\ell^- = 0. \quad (86)$$

We can substitute $\Lambda^-(\Omega_\ell^-)$ with its value in this equation:

$$\alpha\beta(\Omega_\ell^-)^2 - \left[\frac{\ell^2\pi^2}{L^2}(\alpha + \beta) + \alpha\gamma\right]\Omega_\ell^- + \gamma(1 - \delta)\frac{\ell^2\pi^2}{L^2} + \frac{\ell^4\pi^4}{L^4} = 0.$$

We (once again) have to solve a second order equation in Ω_ℓ^- , whose discriminant is:

$$\Delta_\ell = \left[\frac{\ell^2\pi^2}{L^2}(\alpha + \beta) + \alpha\gamma\right]^2 - 4\alpha\beta\left[\gamma(1 - \delta)\frac{\ell^2\pi^2}{L^2} + \frac{\ell^4\pi^4}{L^4}\right] = \alpha^2\gamma^2 + 2\alpha\gamma\frac{\ell^2\pi^2[\alpha + \beta - 2\beta(1 - \delta)]}{L^2} + (\alpha - \beta)^2\frac{\ell^4\pi^4}{L^4} \geq 0. \quad (87)$$

This equation has two solutions, which are exactly the two solutions we would have obtained by inverting Λ^- and Λ^+ with equations (84) and (85). They are positive (as roots of an upturned parabola being positive with negative slope at origin) and write, for a fixed $\ell \in \mathbb{N}^*$, as (18).

B Definition of the high frequency projection operator and proof of lemma 10

Let us first re-introduce some notations.

Definition. For any symmetric semi-definite matrix \mathcal{R}_h and any positive definite matrix \mathcal{M}_h let $\{W_{h,\ell}\}_{\ell=1}^{N_h}$ be the eigenvectors basis associated to the increasing ordered set of positive real eigenvalues $\{\lambda_{h,\ell}\}_{\ell=1}^{N_h}$ such that

$$\begin{cases} \mathcal{R}_h W_{h,\ell} = \lambda_{h,\ell} \mathcal{M}_h W_{h,\ell}, & 1 \leq \ell \leq N_h, & \lambda_{h,\ell} \geq 0, \\ \mathcal{M}_h W_{h,\ell} \cdot W_{h,m} = \delta_{\ell m}, & 1 \leq \ell, m \leq N_h. \end{cases} \quad (88a)$$

$$(88b)$$

Definition. For $\alpha \geq 0$, we define the high frequency projector P_h^α associated to the family of eigenvectors and eigenvalues by:

$$\forall U_h \in \mathbb{R}^{N_h}, P_h^\alpha U_h = \sum_{\ell=L_\alpha}^{N_h} (\mathcal{M}_h W_{h,\ell} \cdot U_h) W_{h,\ell}, \quad (89)$$

where $L_\alpha \in [1, N_h]$ is the smallest integer such that $\lambda_{L_\alpha} \geq \alpha$.

As the vectors $\{W_{h,\ell}\}_{\ell=1}^{N_h}$ are orthonormal with respect to the scalar product induced by \mathcal{M}_h one can expand any vector $U_h \in \mathbb{R}^{N_h}$ in the following way

$$U_h = \sum_{\ell=1}^{N_h} (\mathcal{M}_h W_{h,\ell} \cdot U_h) W_{h,\ell}. \quad (90)$$

The first property we want to prove shows that we can bound the low frequency components of any $U_h \in \mathbb{R}^{N_h}$ using a semi-norm induced by $\mathcal{M}_h - (1/\beta)\mathcal{R}_h$:

Lemma 19. *Let $0 \leq \alpha < \rho(\mathcal{M}_h^{-1}\mathcal{R}_h) \leq \beta$, we have*

$$\left\| \left(I_h - P_h^\alpha \right) U_h \right\|_{\mathcal{M}_h}^2 \leq \frac{\beta}{\beta - \alpha} (\mathcal{M}_h - \frac{1}{\beta} \mathcal{R}_h) U_h \cdot U_h. \quad (91)$$

PROOF. To obtain such an estimate, we first expand the vector U_h on the basis of the $\{W_{h,\ell}\}_{\ell=1}^{N_h}$ and use the definition of the eigenvectors. We have

$$(\mathcal{M}_h - \frac{1}{\beta} \mathcal{R}_h) U_h \cdot U_h = \sum_{\ell=1}^{N_h} \left(1 - \frac{\lambda_{h,\ell}}{\beta} \right) (\mathcal{M}_h W_{h,\ell} \cdot U_h)^2.$$

By hypothesis, $(1 - \beta^{-1} \lambda_{h,\ell})$ is positive, hence

$$\sum_{\ell=1}^{N_h} \left(1 - \frac{\lambda_{h,\ell}}{\beta} \right) (\mathcal{M}_h W_{h,\ell} \cdot U_h)^2 \geq \sum_{\ell=1}^{L_\alpha-1} \left(1 - \frac{\lambda_{h,\ell}}{\beta} \right) (\mathcal{M}_h W_{h,\ell} \cdot U_h)^2 \geq \left(1 - \frac{\alpha}{\beta} \right) \sum_{\ell=1}^{L_\alpha-1} (\mathcal{M}_h W_{h,\ell} \cdot U_h)^2,$$

by definition,

$$\sum_{i=1}^{L_\alpha-1} (\mathcal{M}_h W_{h,\ell} \cdot U_h)^2 = \|(I_h - P_h^\alpha) U_h\|_{\mathcal{M}_h}^2,$$

we get the wanted inequality by inverting $(1 - \beta^{-1} \alpha)$.

□

The other result we prove give a bound on the higher frequency part of any vector:

Lemma 20. *For $\alpha > 0$, we have, for any $U_h \in \mathbb{R}^{N_h}$*

$$\|P_h^\alpha U_h\|_{\mathcal{M}_h}^2 \leq \frac{1}{\alpha} \|U_h\|_{\mathcal{R}_h}^2. \quad (92)$$

PROOF. By definition of the projection operator P_h^α we find, using (88a) and (88b),

$$\|P_h^\alpha U_h\|_{\mathcal{M}_h}^2 = \sum_{\ell=L_\alpha}^{N_h} (\mathcal{M}_h W_{h,\ell} \cdot U_h)^2 = \sum_{\ell=L_\alpha}^{N_h} \left(\frac{\lambda_{h,\ell}}{\lambda_{h,\ell}} \mathcal{M}_h W_{h,\ell} \cdot U_h \right) (\mathcal{M}_h W_{h,\ell} \cdot U_h).$$

Now, as, by assumptions $\lambda_{h,\ell} \geq \alpha$ we obtain

$$\|P_h^\alpha U_h\|_{\mathcal{M}_h}^2 \leq \frac{1}{\alpha} \sum_{\ell=L_\alpha}^{N_h} (\lambda_{h,\ell} \mathcal{M}_h W_{h,\ell} \cdot U_h) (\mathcal{M}_h W_{h,\ell} \cdot U_h) \leq \frac{1}{\alpha} \sum_{\ell=1}^{N_h} \lambda_{h,\ell} (\mathcal{M}_h W_{h,\ell} \cdot U_h)^2$$

where the last inequality is true as we add only positive terms. Using the decomposition (90) valid for all U_h and omitting details, we find that,

$$\begin{aligned} \sum_{\ell=1}^{N_h} \lambda_{h,\ell} (\mathcal{M}_h W_{h,\ell} \cdot U_h)^2 &= \sum_{\ell=1}^{N_h} (\lambda_{h,i} \mathcal{M}_h W_{h,\ell} \cdot U_h) (\mathcal{M}_h W_{h,\ell} \cdot U_h) \\ &= \sum_{\ell=1}^{N_h} (\mathcal{R}_h W_{h,\ell} \cdot U_h) (\mathcal{M}_h W_{h,\ell} \cdot U_h) = \sum_{\ell=1}^{N_h} (\mathcal{M}_h W_{h,\ell} \cdot U_h) W_{h,\ell} \cdot \mathcal{R}_h U_h \end{aligned}$$

which gives

$$\sum_{\ell=1}^{N_h} \lambda_{h,\ell} (\mathcal{M}_h W_{h,\ell} \cdot U_h)^2 = U_h \cdot \mathcal{R}_h U_h,$$

and so, we obtain the final result combining this inequality and the inequality (B) obtained above.

□

C Proof of Theorem 18

As before, we consider a numerical plane wave:

$$\mathbf{U}_h^n = e^{in\omega_h\Delta t}\mathbf{V}_h^0 \quad (93)$$

and want to determine the frequency $f_n = \omega_h/2\pi$, to do so we denote

$$\Omega_h^2 = \frac{4\sin^2(\frac{\omega_h\Delta t}{2})}{\Delta t^2} \in [0, \frac{4}{\Delta t^2}]. \quad (94)$$

Homogeneous scheme (62) applied to this plane wave gives:

$$-\Omega_h^2 M_h \mathbf{V}_h^0 + (1 - \theta\Delta t^2 \Omega_h^2) \underline{K}_h \mathbf{V}_h^0 + (1 - \bar{\theta}\Delta t^2 \Omega_h^2) \overline{K}_h \mathbf{V}_h^0 = 0,$$

which can be rewritten as

$$\Omega_h^2 (M_h + \theta\Delta t^2 \underline{K}_h + \bar{\theta}\Delta t^2 \overline{K}_h) \mathbf{V}_h^0 = K_h \mathbf{V}_h^0. \quad (95)$$

We propose to use the semi discrete system in order to perform a dispersion analysis of Timoshenko system where a $(\theta, \bar{\theta})$ -scheme has been used, with a method similar to the continuous case. The equation (95) (which is fully discrete) can be used to state the following eigenvalues problem: Find every real number Φ , such that there exists $\mathbf{V}^0 \in \mathcal{U}^0$ that satisfies

$$\Phi \left(M + \theta\Delta t^2 [\partial_x (\underline{A}\partial_x + B) + C + {}^t B \partial_x] + \bar{\theta}\Delta t^2 \partial_x \overline{A} \partial_x \right) \mathbf{V}^0 = \left(\partial_x (A\partial_x + B) + C + {}^t B \partial_x \right) \mathbf{V}^0 \quad (96)$$

where M , B and C are Timoshenko system's matrices, while the matrix A is separated as in (61). From the positivity and symmetry properties of the operator in the left and right hand sides of the previous equations we know that there exists an increasing positive sequence of Φ_ℓ (with associated \mathbf{V}_ℓ^0) such that (96) is satisfied. Then we assume that for any fixed ℓ the spatial discretization is sufficiently fine (as in hypothesis 1) so that

$$\Omega_{h,\ell}^2 = \Phi_\ell + \mathcal{O}(h^8). \quad (97)$$

We also assume that Δt is sufficiently small, indeed from relation (94) we see that $\Omega_{h,\ell}^2 \leq 4/\Delta t^2$, and so equation (97) can not be valid uniformly with respect to ℓ (this reflects the fact that the problem discretized in time but not in space is ill-posed).

To determine Φ we write the first order formulation of this problem, as in the proof of proposition 5:

$$\partial_x Y + \mathbb{A}Y = 0 \quad (98)$$

where the matrix \mathbb{A} is however different and reflects the time discretization:

$$\mathbb{A} = \begin{pmatrix} 0 & 0 & -1 & 0 \\ 0 & 0 & 0 & -1 \\ a(\Phi) & 0 & 0 & d(\Phi) \\ 0 & b(\Phi) & c(\Phi) & 0 \end{pmatrix}$$

with

$$a(\Phi) = \frac{\rho S \Phi^2}{c_1(\Phi)}, \quad b(\Phi) = \frac{\rho I \Phi^2}{c_2(\Phi)} - \frac{SG\kappa}{c_2(\Phi)} (1 - \theta\Delta t^2 \Phi^2), \quad c(\Phi) = \frac{SG\kappa}{EI}, \quad d(\Phi) = -\frac{SG\kappa c_2(\Phi)}{EI c_1(\Phi)}$$

$$c_1(\Phi) = (1 - \theta\Delta t^2 \Phi^2)SG\kappa + (1 - \bar{\theta}\Delta t^2 \Phi^2)T_0, \quad c_2(\Phi) = (1 - \theta\Delta t^2 \Phi^2)EI.$$

This matrix admits complex eigenvalues such that

$$\det(\mathbb{A} - \lambda I_4) = 0 \Leftrightarrow \lambda^4 + \lambda^2 [a(\Phi) + b(\Phi) - c(\Phi)d(\Phi)] + a(\Phi)b(\Phi) = 0.$$

We set $\Lambda = \lambda^2$, and we want to nullify

$$f_\Phi(\Lambda) = \Lambda^2 c_1(\Phi)c_2(\Phi) + \Lambda [\rho S\Phi c_2(\Phi) + \rho I\Phi c_1(\Phi) - SG\kappa(1 - \theta\Delta t^2 \Phi)c_1(\Phi) + (SG\kappa)^2(1 - \theta\Delta t^2 \Phi)^2] \\ + \rho S\Phi[\rho I\Phi - (1 - \theta\Delta t^2 \Phi)SG\kappa]. \quad (99)$$

We are only interested in solutions $\Lambda(\Phi) \in \mathbb{R}^-$, associated to imaginary λ which lead to propagating solutions of the system. Let us assume (see remark 10) that there exists one or two solutions $\Lambda^-(\Phi) < 0$ to (99). We can apply the same reasoning as in the continuous case : boundary conditions imply the existence of an integer $\ell \in \mathbb{N}^*$ such that

$$\Lambda^-(\Phi) = - \left(\frac{\ell\pi}{L} \right)^2, \quad f_\Phi(\Lambda^-(\Phi)) = 0 \quad (100)$$

and we need to invert this relation in order to find associated Φ_ℓ .

Remark 10 (Solutions to (99)). *Only the situation where $\Phi > 0$ deserves a remark: we see that when $\Delta t^2 \Phi = 0$, equation (99) is similar to equation (79) (with $\Phi = \Omega^2$) for which we know that there always exist two distinct real solutions with one of them always negative. This implies, by continuity arguments, that for $\Delta t^2 \Phi$ small enough such negative solution exists.*

As in the continuous case, we inject the resulting expression of $\Lambda^-(\Phi)$ in the equation (99) and express it as an equation in Φ_ℓ :

$$\alpha_\ell \Phi_\ell^2 + \beta_\ell \Phi_\ell + \gamma_\ell = 0, \quad (101)$$

where

$$\begin{cases} \alpha_\ell &= \Delta t^4 \frac{\ell^4 \pi^4}{L^4} \theta EI (\theta SG\kappa + \bar{\theta} T_0) + \Delta t^2 \frac{\ell^2 \pi^2}{L^2} \left[\rho I (\theta ES + \theta SG\kappa + \bar{\theta} T_0) + \Delta t^2 SG\kappa T_0 \theta \bar{\theta} \right] + \rho S \left[\rho I + \Delta t^2 \theta SG\kappa \right] \\ \beta_\ell &= -\Delta t^2 \frac{\ell^4 \pi^4}{L^4} EI (2\theta SG\kappa + (\theta + \bar{\theta}) T_0) - \frac{\ell^2 \pi^2}{L^2} \left[\rho I (ES + SG\kappa + T_0) + \Delta t^2 (\theta + \bar{\theta}) T_0 SG\kappa \right] - \rho S (SG\kappa), \\ \gamma_\ell &= \frac{\ell^4 \pi^4}{L^4} EI (SG\kappa + T_0) + SG\kappa T_0 \frac{\ell^2 \pi^2}{L^2}. \end{cases}$$

We introduce $\Delta_\ell = \beta_\ell^2 - 4\alpha_\ell\gamma_\ell$. It is then possible to express Δ_ℓ as a polynomial of Δt parametrized by $\theta, \bar{\theta}$ and ℓ , so we introduce the notation $\Delta_\ell \equiv \Delta_\ell(\Delta t; \theta, \bar{\theta})$. This discriminant is not simple, but we can give some specific behaviors:

▷ **When $\bar{\theta} = \theta$.** Then, the discriminant simplifies to

$$\Delta_\ell(\Delta t, \theta, \theta) = \ell^4 \frac{\rho^4 \pi^4 I^4}{L^4} (ES - T_0 - SG\kappa)^2 + \ell^2 \frac{2\pi^2 \rho^2 A^2 G\kappa I}{L^2} (SG\kappa + ES - T_0) + \rho^2 S^4 G^2 \kappa^2.$$

It does not depend on Δt nor θ and is always positive (we recall that by assumption $ES - T_0 \geq 0$).

▷ **When $\theta \neq \bar{\theta}$.** It can be shown, by explicit computations, that the roots Δt_ℓ^\pm of $\Delta_\ell(\Delta t; \theta, \bar{\theta})$ are complex, and we deduce that $\Delta_\ell(\Delta t; \theta, \bar{\theta})$ always stays positive since $\Delta_\ell(0; \theta, \bar{\theta}) \geq 0$ (the value of $\Delta_\ell(0; \theta, \bar{\theta})$ being given by equation (87) up to a positive multiplicative factor).

As seen above, Δ_ℓ is positive, hence there exist two real roots which read:

$$\Phi_\ell^+ = \frac{-\beta_\ell + \sqrt{\Delta_\ell}}{2\alpha_\ell} > \Phi_\ell^- = \frac{-\beta_\ell - \sqrt{\Delta_\ell}}{2\alpha_\ell}. \quad (102)$$

When possible (see remark 11), we invert equation (94) for sufficiently small Δt and we find

$$f_{h,\ell}^\pm = \frac{1}{\pi\Delta t} \text{Asin}\left(\sqrt{\frac{\Delta t^2(\Phi_\ell^\pm + \mathcal{O}(h^8))}{4}}\right). \quad (103)$$

It is then possible to conduct a Taylor expansion for small Δt , to obtain

$$\Phi_\ell^\pm = (2\pi f_\ell^\pm)^2 + \mathcal{O}(\Delta t^2) \Rightarrow f_{h,\ell}^\pm = f_\ell^\pm + \mathcal{O}(\Delta t^2 + h^4).$$

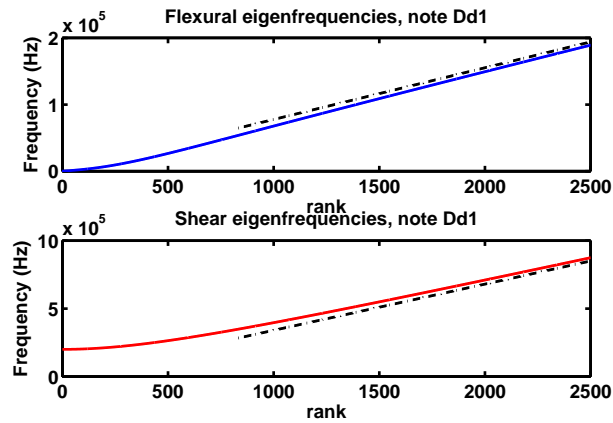
Finally, using a Taylor expansion with respect to Δt and ℓ in expression (102, 103) we obtain the result of Theorem 18.

Remark 11. A necessary condition for (94) to be invertible is that $\Phi_\ell^\pm \in [0, 4/\Delta t^2]$. This leads to necessary conditions on Δt and ℓ , which are not easy to comprehend (see [16]), and become more and more restrictive on Δt when ℓ grows.

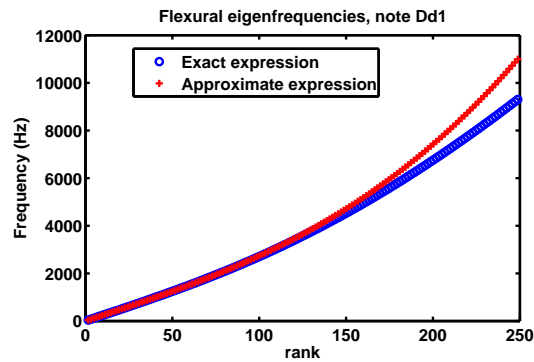
References

- [1] G Allaire. Numerical analysis and optimization: an introduction to mathematical modelling and numerical simulation. Oxford Science Publications, 2007.
- [2] A Bhaskar. Elastic waves in Timoshenko beams: the “lost and found” of an eigenmode. P R Soc A, 465(2101), pp 239–255, 2009.
- [3] J Chabassier and S Imperiale. Introduction and study of fourth order theta schemes for linear wave equations. Accepted, Journal of Computational and Applied Mathematics, 2012.
- [4] J Chabassier, A Chaigne and P Joly. Energy preserving schemes for nonlinear Hamiltonian systems of wave equations: Application to the vibrating piano string. Computer Methods in Applied Mechanics and Engineering, vol 199, pp 2779–2795, 2010.
- [5] J Chabassier and P Joly. Time domain simulation of a piano. Part I : model description. in preparation for M2AN, 2012.
- [6] H A Conklin. Design and tone in the mechanoacoustic piano. part III. Piano strings and scale design. J Acoust Soc Am, vol 100, pp 1286–1298, 1996.
- [7] G Cowper. The shear coefficient in Timoshenko’s beam theory. ASME, J.Appl.Mech., vol 33, pp 335–340, 1966.
- [8] R Dautray, JL Lions, C Bardos, M Cessenat, P Lascaux, A Kavenoky, B Mercier, O Pironneau, B Scheurer, and R Sentis. Mathematical analysis and numerical methods for science and technology - vol. 6. Springer, 2000.
- [9] H Fletcher and E Blackham. Quality of piano tones. J Acoust Soc Am, vol 34, issue 6, pp. 749–761, 1962.
- [10] S Timoshenko. On the correction for shear of the differential equation for transverse vibrations of bars of uniform cross-section. Philosophical Magazine, vol 41, pp 744–746, 1921.

-
- [11] N. F. J van Rensburg and A. J van der Merwe. Natural frequencies and modes of a Timoshenko beam. Wave Motion, 44(1):58–69, 2006.
 - [12] P Joly. Variational Methods for Time Dependent Wave Propagation, M. Ainsworth, P. Davis, D. Duncan, P. Martin, B. Rynne (Eds.), Topics in Computational Wave Propagation, Direct and inverse Problems, Lecture Notes in Computational Science and Engineering, 31:201–264, Springer, Berlin, 2003.
 - [13] F Collino, T Fouquet and P Joly. A conservative space-time mesh refinement method for the 1-d wave equation. Part I: Construction. Numerische Mathematik, 95(2):197–221, 2003.
 - [14] A Burel, S Imperiale and P Joly. Solving the Homogeneous Isotropic Linear Elastodynamics Equations Using Potentials and Finite Elements. The Case of the Rigid Boundary Condition., Numerical Analysis and Applications,5(2):136-143, 2012.
 - [15] J Gilbert and P Joly. Higher order time stepping for second order hyperbolic problems and optimal CFL conditions. Partial Differential Equations, 16:67–93, 2008
 - [16] J Chabassier. Modélisation et simulation numérique d’un piano par modèles physiques. Phd. dissertation, École Polytechnique, 2012.



(a) Two branches of eigenfrequencies : upper figure (in blue) for flexural frequencies f_ℓ^- , lower figure (in red) for shear frequencies f_ℓ^+ . The high frequency behaviors are represented in dashed lines.



(b) Low frequency behavior of the flexural branch f_ℓ^- of equation (17) (in blue) compared to its approximate expression for small ℓ of equation (19) (in red).

Figure 1: Eigenfrequencies of the simply supported prestressed Timoshenko system, for note D#1.

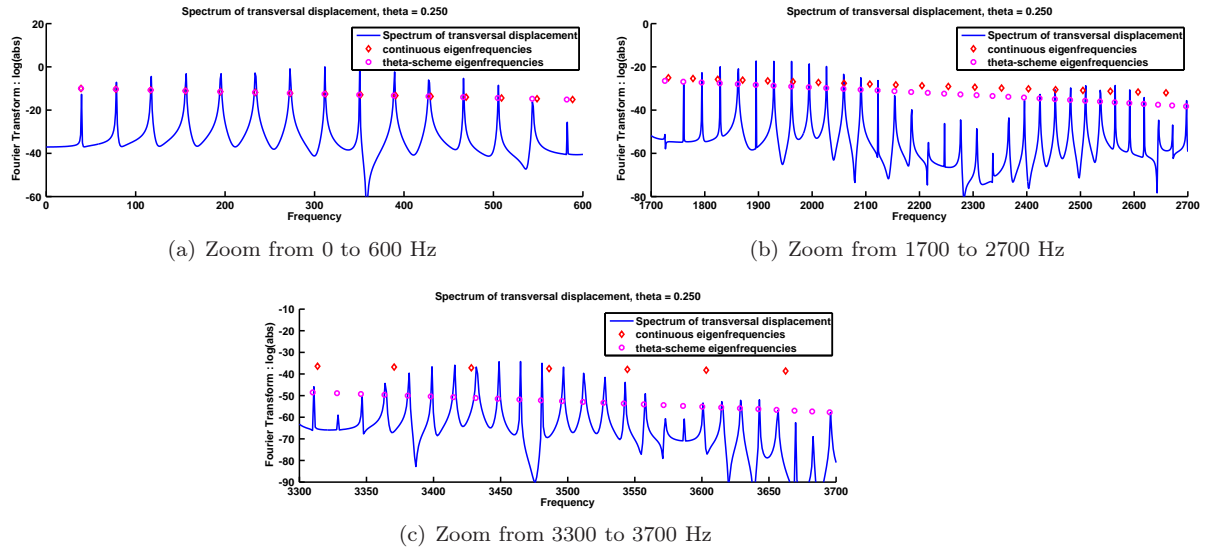


Figure 2: Transversal displacement's spectrum of string D#1 using a θ -scheme with $\theta = 1/4$ and $\Delta t = 10^{-4}$ s.

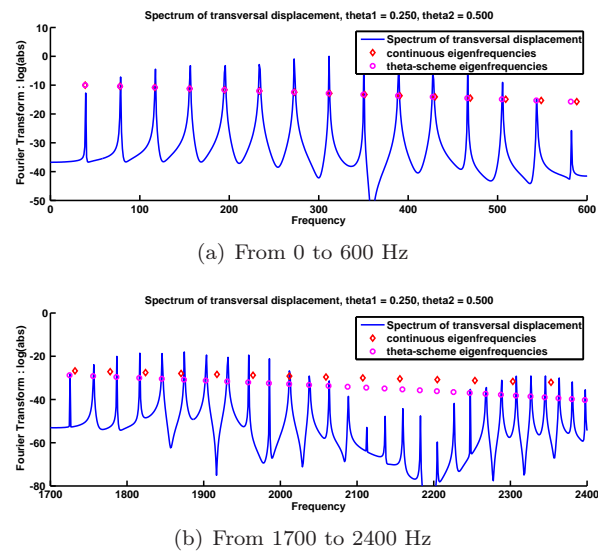


Figure 3: Transversal displacement's spectrum of string D#1 using a $(\theta, \bar{\theta})$ -scheme with $\theta = 1/2$, $\bar{\theta} = 1/4$ and $\Delta t = 10^{-4}$.

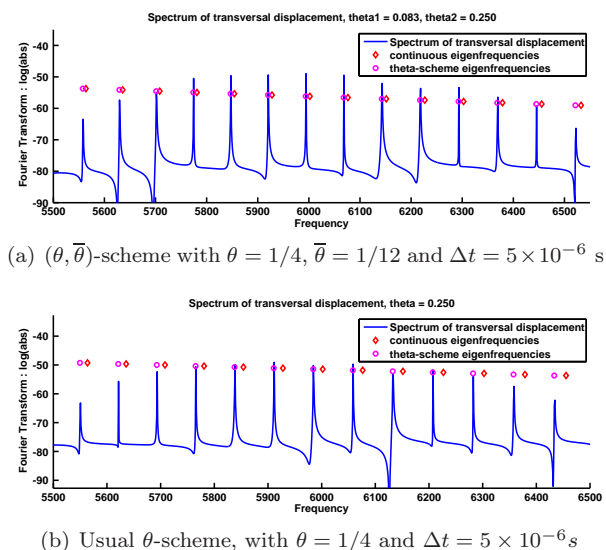


Figure 4: Transversal displacement's spectrum of string $D\sharp 1$. It is clear that the new $(\theta, \bar{\theta})$ reduces numerical dispersion from the continuous eigenfrequencies, compared to the usual θ -scheme, with no computational overcost.

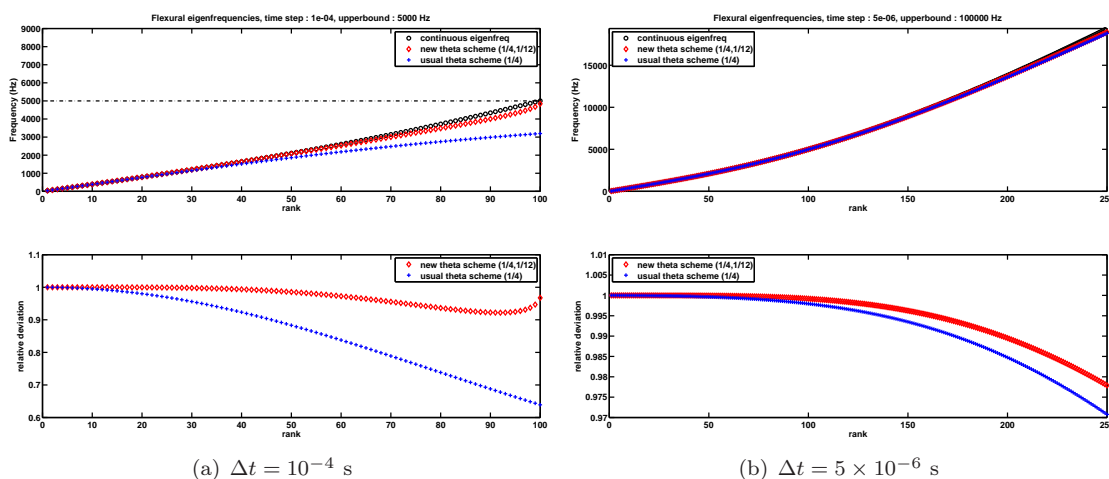


Figure 5: Comparison of theoretical eigenfrequencies of the continuous system (black circles \circ), new $(\theta, \bar{\theta})$ -scheme with $\theta = 1/4$ and $\bar{\theta} = 1/12$ (red diamonds \diamond) and usual θ -scheme with $\theta = 1/4$ (blue plus sign $+$). The theoretical curves are plotted for the first eigenfrequencies after which numerical stability is no longer granted.



**RESEARCH CENTRE
BORDEAUX – SUD-OUEST**

200 Avenue de la Vieille Tour,
33405 Talence Cedex

Publisher
Inria
Domaine de Voluceau - Rocquencourt
BP 105 - 78153 Le Chesnay Cedex
inria.fr

ISSN 0249-6399

