



**HAL**  
open science

## What eddy-covariance measurements tell us about prior land flux errors in CO<sub>2</sub>-flux inversion schemes

Frédéric Chevallier, Tao Wang, Philippe Ciais, Fabienne Maignan, Marc Bocquet, M. Altaf Arain, Alessandro Cescatti, Jiquan Chen, A. Johannes Dolman, Beverly E. Law, et al.

### ► To cite this version:

Frédéric Chevallier, Tao Wang, Philippe Ciais, Fabienne Maignan, Marc Bocquet, et al.. What eddy-covariance measurements tell us about prior land flux errors in CO<sub>2</sub>-flux inversion schemes. *Global Biogeochemical Cycles*, 2012, 26 (GB1021), 10.1029/2010GB003974 . hal-00705026

**HAL Id: hal-00705026**

**<https://inria.hal.science/hal-00705026>**

Submitted on 17 Sep 2020

**HAL** is a multi-disciplinary open access archive for the deposit and dissemination of scientific research documents, whether they are published or not. The documents may come from teaching and research institutions in France or abroad, or from public or private research centers.

L'archive ouverte pluridisciplinaire **HAL**, est destinée au dépôt et à la diffusion de documents scientifiques de niveau recherche, publiés ou non, émanant des établissements d'enseignement et de recherche français ou étrangers, des laboratoires publics ou privés.

## What eddy-covariance measurements tell us about prior land flux errors in CO<sub>2</sub>-flux inversion schemes

Frédéric Chevallier,<sup>1</sup> Tao Wang,<sup>1</sup> Philippe Ciais,<sup>1</sup> Fabienne Maignan,<sup>1</sup> Marc Bocquet,<sup>2,3</sup> M. Altaf Arain,<sup>4</sup> Alessandro Cescatti,<sup>5</sup> Jiquan Chen,<sup>6</sup> A. Johannes Dolman,<sup>7</sup> Beverly E. Law,<sup>8</sup> Hank A. Margolis,<sup>9</sup> Leonardo Montagnani,<sup>10,11,12</sup> and Eddy J. Moors<sup>13</sup>

Received 21 October 2010; revised 16 November 2011; accepted 3 January 2012; published 10 March 2012.

[1] To guide the future development of CO<sub>2</sub>-atmospheric inversion modeling systems, we analyzed the errors arising from prior information about terrestrial ecosystem fluxes. We compared the surface fluxes calculated by a process-based terrestrial ecosystem model with daily averages of CO<sub>2</sub> flux measurements at 156 sites across the world in the FLUXNET network. At the daily scale, the standard deviation of the model-data fit was 2.5 gC·m<sup>-2</sup>·d<sup>-1</sup>; temporal autocorrelations were significant at the weekly scale (>0.3 for lags less than four weeks), while spatial correlations were confined to within the first few hundred kilometers (<0.2 after 200 km). Separating out the plant functional types did not increase the spatial correlations, except for the deciduous broad-leaved forests. Using the statistics of the flux measurements as a proxy for the statistics of the prior flux errors was shown not to be a viable approach. A statistical model allowed us to upscale the site-level flux error statistics to the coarser spatial and temporal resolutions used in regional or global models. This approach allowed us to quantify how aggregation reduces error variances, while increasing correlations. As an example, for a typical inversion of grid point (300 km × 300 km) monthly fluxes, we found that the prior flux error follows an approximate e-folding correlation length of 500 km only, with correlations from one month to the next as large as 0.6.

**Citation:** Chevallier, F., et al. (2012), What eddy-covariance measurements tell us about prior land flux errors in CO<sub>2</sub>-flux inversion schemes, *Global Biogeochem. Cycles*, 26, GB1021, doi:10.1029/2010GB003974.

### 1. Introduction

[2] Carbon dioxide (CO<sub>2</sub>) fluxes at the Earth's surface may be recovered (or *inverted*) from the observed spatial and temporal gradients of the CO<sub>2</sub> concentrations in the atmosphere by applying Bayes' theorem [e.g., *Enting et al.*, 1995; *Bousquet et al.*, 2000; *Gurney et al.*, 2002]. Atmospheric mixing makes the problem ill-constrained and therefore prior information about the CO<sub>2</sub> flux originating from the land and water surface is also used in the inversion process. In statistical terms, this approach transforms the prior probability density  $p(\mathbf{x})$  about the CO<sub>2</sub> fluxes, jointly called *state vector*  $\mathbf{x}$  here, into the posterior probability density  $p(\mathbf{x}|\mathbf{y})$  conditioned

on atmospheric measurements, jointly called  $\mathbf{y}$ . The statistically optimal estimator of the fluxes, given the available information, corresponds to the maximum of the function  $p(\mathbf{x}|\mathbf{y})$ . By design, it critically depends on the assumed prior density function  $p(\mathbf{x})$ . Under the numerically convenient assumption of a multivariate Gaussian density, describing  $p(\mathbf{x})$  requires assigning means, variances and correlations. The atmospheric inversion studies of CO<sub>2</sub> fluxes published so far have assumed various probability distributions centered on climatology, regional inventory statistics or the output of terrestrial ecosystem models, as well as ocean carbon cycle models [*Gurney et al.*, 2002]. In practice, some of the key characteristics of the prescribed a priori flux error distributions  $p(\mathbf{x})$  in use stem from the capacity of the current flux-inversion systems to deal with large state vectors  $\mathbf{x}$ , rather than from the statistics of the inference problem: the largest

<sup>1</sup>Laboratoire des Sciences du Climat et de l'Environnement/IPSL, CEA-CNRS-UVSQ, Gif-sur-Yvette, France.

<sup>2</sup>CEREA, École des Ponts ParisTech-EDF R&D, Université Paris-Est, Marne la Vallée, France.

<sup>3</sup>INRIA, Paris Rocquencourt Research Centre, Paris, France.

<sup>4</sup>School of Geography and Earth Sciences, and McMaster Centre for Climate Change, McMaster University, Hamilton, Ontario, Canada.

<sup>5</sup>Climate Change Unit, European Commission-DG Joint Research Centre, Ispra, Italy.

<sup>6</sup>Landscape Ecology and Ecosystem Science, Bowman-Oddy Laboratories, University of Toledo, Toledo, Ohio, USA.

<sup>7</sup>Department of Hydrology and Geo-Environmental Sciences, Vrije Universiteit, Amsterdam, Netherlands.

<sup>8</sup>College of Forestry, Oregon State University, Corvallis, Oregon, USA.

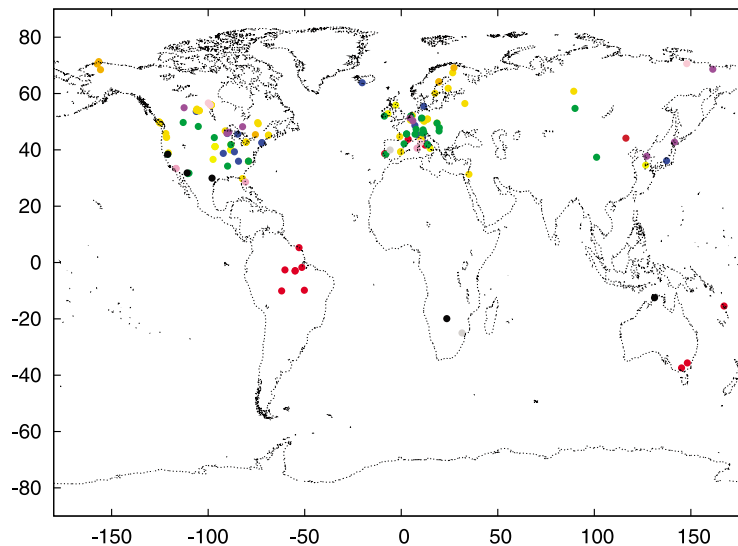
<sup>9</sup>Centre d'Étude de la Forêt, Faculté de foresterie, de géographie et de géomatique, Université Laval, Quebec City, Quebec, Canada.

<sup>10</sup>Forest Services, Autonomous Province of Bolzano, Bolzano, Italy.

<sup>11</sup>Agency for the Environment, Autonomous Province of Bolzano, Bolzano, Italy.

<sup>12</sup>Faculty of Sciences and Technologies, University of Bolzano, Bolzano, Italy.

<sup>13</sup>Alterra, Wageningen, Netherlands.



**Figure 1.** Location of 156 FLUXNET sites used in this study. A different color is used for each dominant biome type.

correlation patterns in space and time are specified in the case of classical analytical systems (i.e., coarse regions inversions [e.g., Gurney *et al.*, 2002]), while the narrowest structures (i.e., pixel size) can be introduced in the variational (i.e., adjoint-based) schemes [Chevallier *et al.*, 2005; Rödenbeck, 2005; Baker *et al.*, 2006]. Ensemble methods lie in-between [Zupanski *et al.*, 2007; Peters *et al.*, 2007; Feng *et al.*, 2009]. This subjective choice of error correlation structures critically influences the way the information from a single atmospheric measurement is spread in space and time for the flux inversion systems.

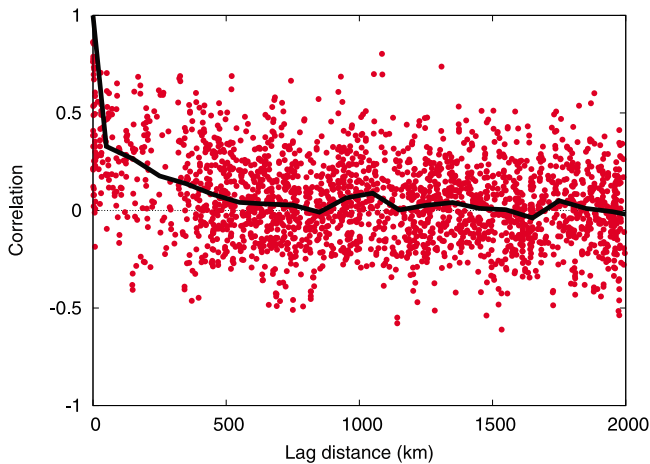
[3] Two studies have attempted to shed light on the characteristics of  $p(\mathbf{x})$  based on observations. Michalak *et al.* [2005] used CO<sub>2</sub> concentration measurements within a flux inversion system by introducing some poorly known characteristics of the prior errors in the state vector  $\mathbf{x}$ . They highlighted the power of their method but stressed its subjectivity. In the second study, Chevallier *et al.* [2006] relied on the non-gap-filled, raw CO<sub>2</sub> flux measurements at the eddy-covariance flux sites (total 34) in the northern hemisphere to constrain  $p(\mathbf{x})$ . They showed a heavy-tail distribution  $p(\mathbf{x})$  that contradicts the usual assumption of a multivariate Gaussian distribution. Further, the error correlations appeared to follow a linear temporal dependency after the second lag day without any particular spatial structure.

[4] Following the approach of Chevallier *et al.* [2006], we examine the characteristics of  $p(\mathbf{x})$  for terrestrial ecosystem CO<sub>2</sub> fluxes, when  $p(\mathbf{x})$  is centered around the Organizing Carbon and Hydrology In Dynamic Ecosystems (ORCHIDEE), a process-based ecosystem model [Krinner *et al.*, 2005]. Our study advances our previous knowledge in two ways. First, it uses a much-wider archive of eddy-covariance sites (156 in total) with gap-filled records, which provides more detailed information on  $p(\mathbf{x})$  for a variety of biomes. Additionally, we explore the influence of temporal and spatial aggregation on the statistics in order to bridge the gap between the local scale of the daily eddy-covariance flux measurements that are used to define  $p(\mathbf{x})$  and the

typically much larger spatial and temporal scales of the inversion systems.

## 2. Methods

[5] Surface CO<sub>2</sub> fluxes were measured at tower sites using the eddy covariance technique, which derives CO<sub>2</sub> flux from the covariance between fluctuations around the mean vertical wind velocity and CO<sub>2</sub> mixing ratio [Aubinet *et al.*, 1999]. Eddy covariance fluxes are typically representative of surface areas ranging from a few hectares to a few km<sup>2</sup>, depending on the height of the sensors above the canopy, on the roughness of the surface and on the air stability. Flux measurements have been conducted over most major biomes across the world under a global network of flux towers, FLUXNET [Baldocchi *et al.*, 2001; Baldocchi, 2008]. A synthesis data set comprising 253 flux sites, named after the Italian town *La Thuile*, was compiled in 2007. This archive also stores standardized gap-filled measurements of CO<sub>2</sub> fluxes at a 30-min time step using a common protocol [Papale *et al.*, 2006]. The *La Thuile* archive also collects the corresponding meteorological data, which we gap-filled based on the data from the Interim Reanalysis of the European Centre for Medium-Range Weather Forecasts [Berrisford *et al.*, 2009] for use as input to the ORCHIDEE model. The present study focuses on the 156 sites of the *La Thuile* database that encompass at least three consecutive years of measurements between 1991 through 2007. Their locations cover much of the temperature-precipitation climate space across the world and most biomes (Figure 1). The full site list is given in Appendix A. Lasslop *et al.* [2008] estimated the overall uncertainty of the half-hourly gap-filled fluxes to be about 0.07 gC·m<sup>-2</sup> (one sigma uncertainty [cf. Lasslop *et al.*, 2008, Figure 2e]). This relatively large uncertainty does not contain much autocorrelation (i.e., the autocorrelation is <0.2 after only four hours [cf. Lasslop *et al.*, 2008, Figure 5a]) so that the uncertainty of the fluxes amounts to only a few tenths of a gC·m<sup>-2</sup>·d<sup>-1</sup> for daily totals [Hollinger and Richardson,



**Figure 2.** Distance correlogram, i.e., correlation between the daily net ecosystem exchange (NEE) errors of the ORCHIDEE model at pairs of distant sites for a same time. Each point includes all the common years of one of the site pairs. The black line represents the median of the points per 100-km bin.

2005]. Therefore, we will not report results here at scales shorter than one day. Errors are site-specific and therefore have low spatial correlations. Some systematic errors affect the measurements: e.g., the measurements do not show energy balance closure and low nighttime wind conditions are not properly treated [Baldocchi *et al.*, 2001]. We rely here on the quality control of the database to minimize these biases. In any event, biases should not affect the statistics (standard deviations and correlations) presented in the subsequent analyses.

[6] The site-level meteorological variables were used as boundary conditions for ORCHIDEE simulations at each site. The plant functional type (PFT) is prescribed in the model using parameters that most closely represent the site vegetation. ORCHIDEE simulates the half-hourly, annual and longer variations of the carbon, water and energy fluxes, as well as soil carbon and water pools [Krinner *et al.*, 2005]. This study uses the configuration of the model which was run to set up the prior information for flux inversions at Laboratoire des Sciences du Climat et de l'Environnement (LSCE), as illustrated by Piao *et al.* [2009] and Chevallier *et al.* [2010]. Each site is often a net sink of CO<sub>2</sub> (and rarely a net source of CO<sub>2</sub>) and may be in a nonsteady state since the last disturbance event. However, the average long-term net ecosystem exchange (NEE) simulated by the ORCHIDEE model is in a steady state because the model was spun up for 2000 years until soil and biomass pools reached equilibrium with climate conditions at each site.

### 3. Results

#### 3.1. Daily Fluxes at Site Scale

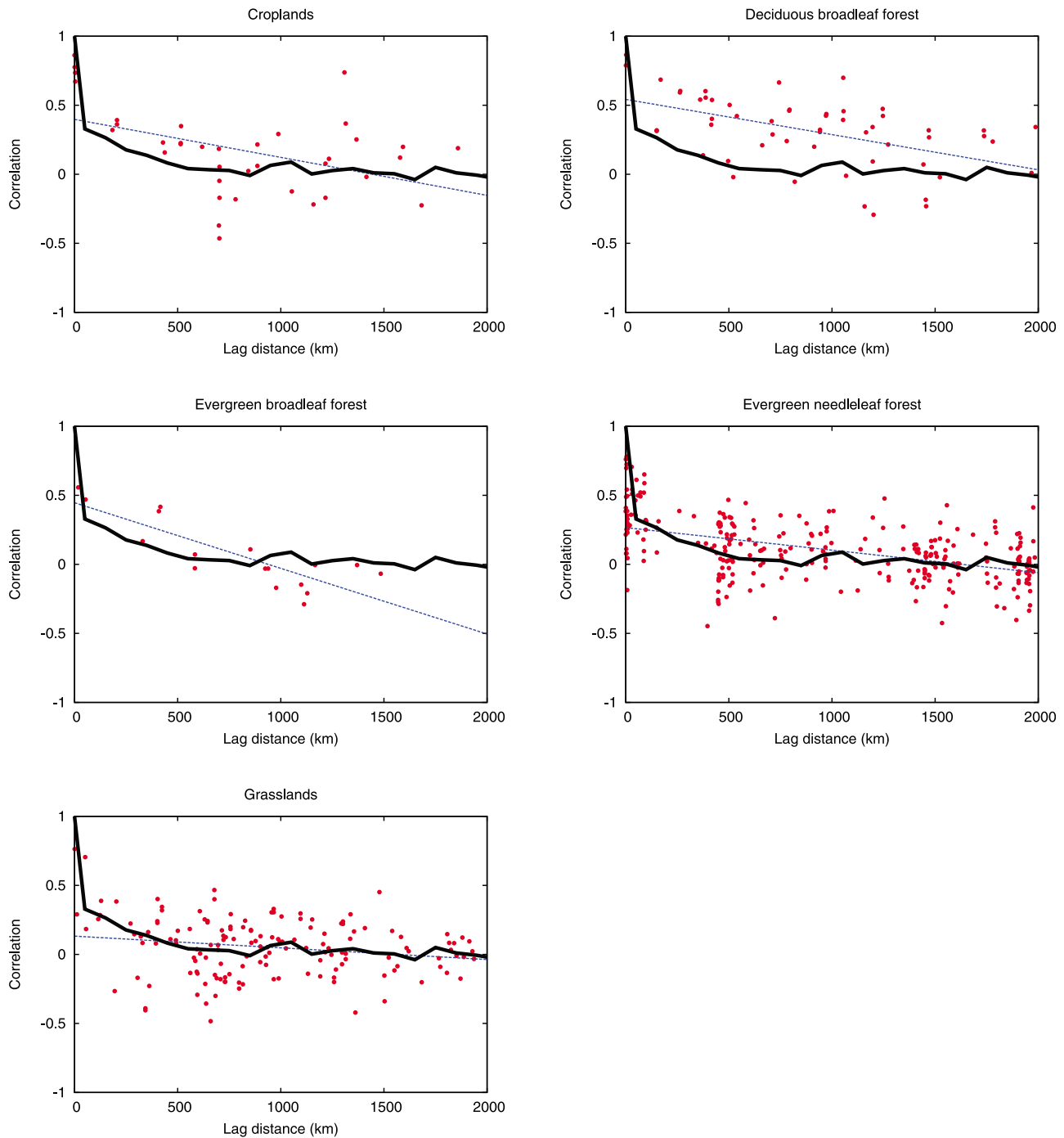
[7] When combining all site-years together, the standard deviation of the differences between simulated and observed daily fluxes is 2.5 gC·m<sup>-2</sup>·d<sup>-1</sup>. The distribution is biased by 0.7 gC·m<sup>-2</sup>·d<sup>-1</sup>, with the ORCHIDEE model having the

smaller annual mean carbon uptake by vegetation. This bias is partially expected because of the equilibrium assumption set for the simulation and the fact that many FLUXNET sites are managed ecosystems with higher uptake than the regional means within the global context. The measurement biases may also explain some of the bias. The differences between model- and observed values vary with the season, with larger values during the growing season. From May to August, the bias rises to 1.2 gC·m<sup>-2</sup>·d<sup>-1</sup> with a standard deviation of 3.6 gC·m<sup>-2</sup>·d<sup>-1</sup>. Interestingly, the observed variability in NEE across the year has a standard deviation of 2.3 gC·m<sup>-2</sup>·d<sup>-1</sup> only, suggesting that, at the synoptic scale, the NEE uncertainty for a model like ORCHIDEE is no better than assuming a constant flux field.

[8] The spatial structure of the error appears to be a function of the lag distance between pairs of sites based on the Pearson correlation coefficient of the model-minus-observation differences (Figure 2). The median reveals spatial structure at short distances (less than 100 km) that did not show up in the 34-site study conducted by Chevallier *et al.* [2006]: the correlation median is 0.33 for distances <100 km, 0.26 for distances between 100 and 200 km, and negligible beyond 400 km. Some systematic and spatially coherent errors in the modeling of plant phenology [e.g., Demarty *et al.*, 2007] may contribute to the correlations. As expected, the observed variability of NEE contains larger correlations: the median is 0.55 for distances less than 100 km, 0.44 for distances between 100 and 200 km, and is still larger than 0.1 after 2500 km. Therefore, the model errors are at a finer spatial scale than the measured signal itself, which implies that the model captures the main patterns of the true NEE for spatially averaged quantities.

[9] Chevallier *et al.* [2006] did not address the possibility that spatial error correlations could be significant within a given vegetation type. If this is the case, inverting surface fluxes directly in eco-regions would be legitimate [e.g., Peters *et al.*, 2007]. Figure 3 examines this possibility by restricting the scatterplots to a single dominating PFT, such as cropland, deciduous broad-leaf forest, evergreen broad-leaf forest, evergreen needleleaf forest, and grassland. Only the deciduous broad-leaf forest type increased the average correlation coefficient, by about 0.4, compared to the all-site statistics. Clearly, assigning biome-dependent correlations does not seem justified, at least given the spatial density of the *La Thuile* flux network data.

[10] Figure 4 shows the temporal structure of the error in a manner similar to Figure 2. To minimize edge effects, we condense the results in an all-site-year correlation, rather than in a binned median correlation. The former quantity gives more weight to the sites with long data records than the latter and yields slightly larger values (Figure 4). The all-site correlation is positive for lags <85 days and for lags >275 days, which reflects some seasonal pattern of the error. Limited negative correlations exist at lags of 85–275 days, the all-site correlation being not lower than -0.03. Again, the measurement-only statistics of NEE (not shown) contain larger temporal correlations: the all-site correlation remains positive until day 95 and the negative correlations reach -0.1 around the six-month lag. This highlights some skill of the model at a seasonal scale.



**Figure 3.** Distance correlogram for errors between sites within the same dominant PFT. The regression line of the points is shown, for visualization purpose only, in blue. The black line represents the median for all sites, as shown in Figure 2.

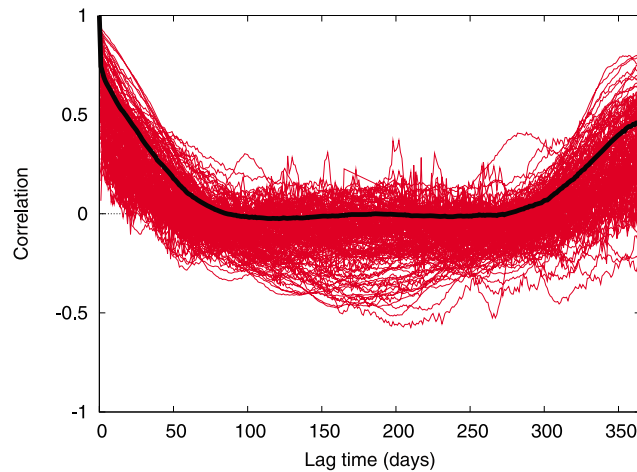
### 3.2. Effect of Temporal and Spatial Aggregation of the Fluxes

[11] The FLUXNET database enables a synthetic estimation of the daily NEE error statistics of the ORCHIDEE model at the site scale, while Bayesian atmospheric CO<sub>2</sub> flux inversion systems usually operate at coarser temporal and spatial scales, typically several 10,000 km<sup>2</sup> and several days or weeks for global inversions. Therefore, the effect of space-

time aggregation on the NEE prior error characterization needs to be investigated.

[12] If the site-level daily error statistics are normally distributed (i.e., Gaussian) with covariance matrix  $\mathbf{B}$ , the corresponding low resolution error statistics are also normally distributed and have a covariance matrix as follows [e.g., Kaminski *et al.*, 2001; Bocquet *et al.*, 2011]:

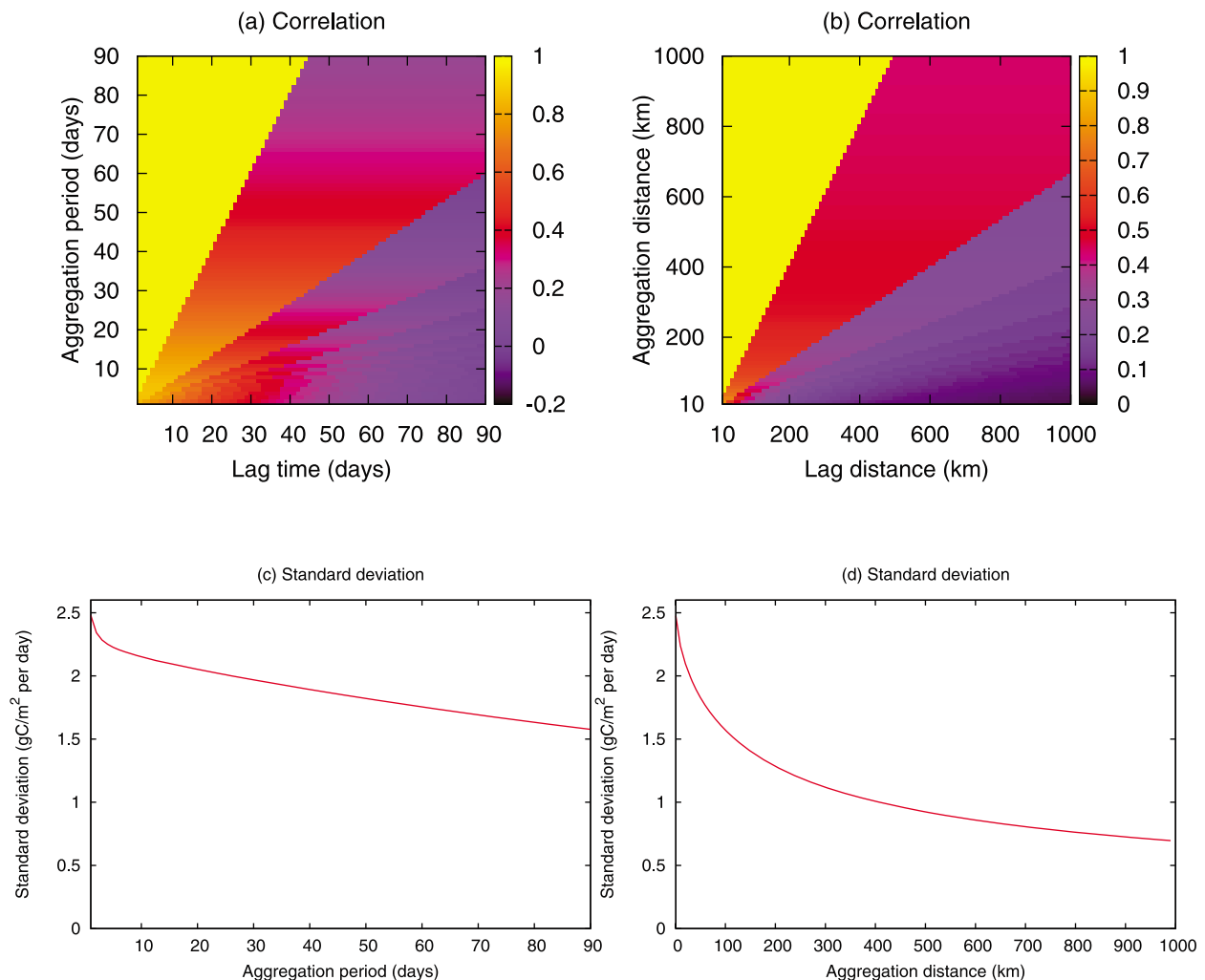
$$\mathbf{B}' = \mathbf{U}\mathbf{B}\mathbf{U}^T \quad (1)$$



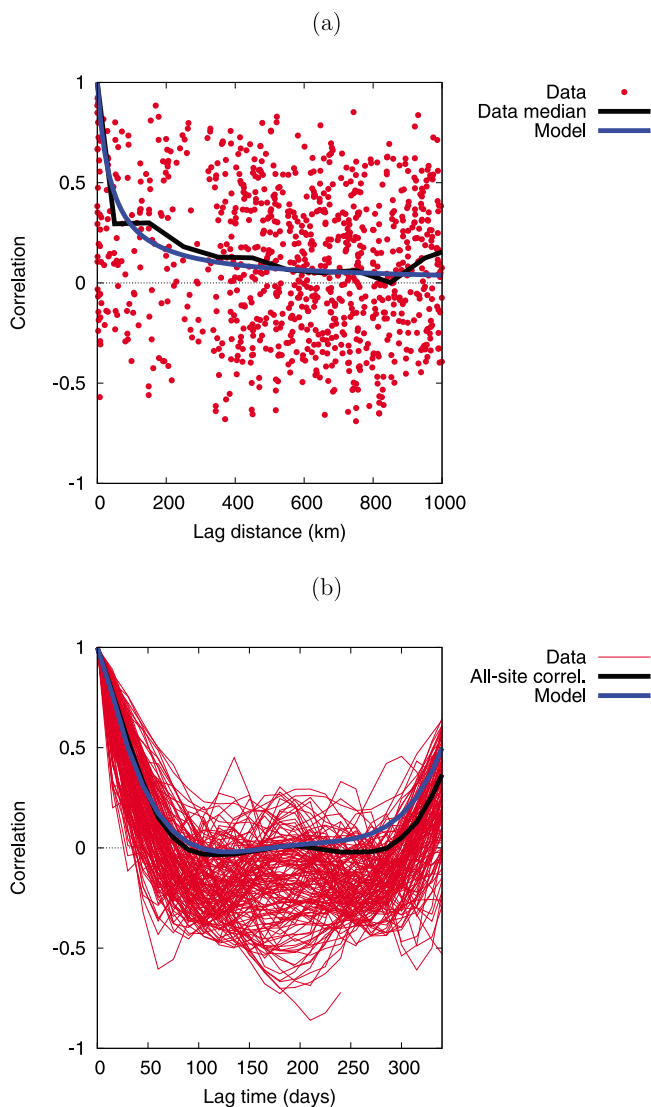
**Figure 4.** Time correlogram, i.e., autocorrelation between the errors of the ORCHIDEE model at distant times for a same site. Each red line corresponds to a different site. The black line represents the all-site autocorrelation.

where  $U$  is the operator that upscales the fluxes from the high-resolution scale to the low resolution one (i.e., coarse-graining operator). Equation (1) provides a straightforward approach to upscale the error statistics, but its application for global atmospheric inversion systems is hampered by the large dimension of  $\mathbf{B}$ . We therefore introduce an alternative approach to upscale the error statistics from the relatively high resolution of our previous results to any coarser regular spatial and temporal resolution. The model is described in Appendix B. It consists of two simple equations, equation (B3) and equation (B4), which bridge the gap between the scales. They show that aggregation dampens the higher frequencies of the error and therefore reduces it in relative values (equation (B3)), while increasing the low (correlated) frequencies (equation (B4)).

[13] Figure 5 shows the effect of temporal and spatial aggregation on the error statistics, as computed from the error model for various lags and aggregation scales. We have assumed that each one of the coarse-resolution NEE fluxes can be split into high-resolution pixels of 1 day and 1 km<sup>2</sup> for time and space, respectively. Correlation lags are defined



**Figure 5.** Effect of (a and c) temporal and (b and d) spatial aggregation of the fluxes on error correlation in the same dimension (Figures 5a and 5b) and on error standard deviation (Figures 5c and 5d). The aggregation distance (Figures 5b and 5d) is defined as the length of the side of a square on which the aggregation is performed.



**Figure 6.** (a) Distance and (b) time correlograms for semi-monthly site-scale fluxes. Each point includes all the common years of a given pair. The black line represents the median of the correlations per 100-km bin (Figure 6a) or the all-site correlation (Figure 6b). The blue lines correspond to the statistical model of the errors. The model curves are extracted from Figures 5a and 5b with a two-week smoothing in the case of Figure 5b.

from a reference point taken as the middle of a coarse-resolution tile of length  $g$ . For a given aggregation time or distance  $g$ , the correlation behaves like a staircase function: it is constant between lags 0 and  $g/2$ , between lags  $g/2$  and  $g + g/2$ , between lags  $g + g/2$  and  $2g + g/2$ , etc. We illustrate the variations of the correlations  $R$  with two examples: at lag time 30 days (Figure 5a),  $R$  varies between 0.4 (without any aggregation) and 1.0 (with 60-day aggregation or more); at lag distance 500 km,  $R$  varies between 0.1 (without any aggregation) and 1.0 (with 1000-km aggregation or more). The standard deviations  $S$  decrease from  $2.5 \text{ gC}\cdot\text{m}^{-2}\cdot\text{d}^{-1}$  to  $1.6 \text{ gC}\cdot\text{m}^{-2}\cdot\text{d}^{-1}$  for 90-day aggregation and to  $0.7 \text{ gC}\cdot\text{m}^{-2}\cdot\text{d}^{-1}$  for 1000-km aggregation.

[14] The high temporal density of the flux data allows us to evaluate the model behavior for temporal aggregation. Here we take the example of semi-monthly averaged fluxes, for which we still have a sufficient number of flux pairs to perform the statistics despite the averaging. For the standard deviation  $S$  of the semi-monthly flux errors at the site scale, our model yields a value of  $2.1 \text{ gC}\cdot\text{m}^{-2}\cdot\text{d}^{-1}$  (Figure 5c), which is the same value as the actual model-minus-observation statistics (to be compared with  $\sigma = 2.5 \text{ gC}\cdot\text{m}^{-2}\cdot\text{d}^{-1}$  for 24-h site-scale). The correlations in the model and in the data for the semi-monthly fluxes are displayed in Figure 6. The model reproduces the behavior of the data fairly well, except for lag times longer than 200 days where differences of up to 0.1 are seen. Note for instance the good simulation for lags less than 15 days in Figure 6b, for which the shape of the data all-site correlation significantly differs between high and low temporal resolutions (Figure 4 versus Figure 6b). For longer lags, the two-week aggregation does not change the correlations much.

[15] We use the statistical model to compute error statistics at the typical space-time resolution of current global atmospheric inversion systems that use ORCHIDEE fluxes as prior information [Piao *et al.*, 2009; Chevallier *et al.*, 2010]. For the eight-day fluxes used by Chevallier *et al.* [2010] that had an e-folding temporal error correlation length of four weeks (the e-folding length being the lag required for the correlation to decrease by a factor of  $e$ ; note that these authors separate daytime and nighttime, which is not performed here), the coarse-resolution errors (Figure 5a) are correlated by 0.43 at lag one month (instead of 0.35 in the case of daily fluxes), which is close to an exponentially decreasing function of e-folding length of 36 days. We note that an exponentially decreasing function does not capture the positive values at the one-year lag (Figure 4). The standard deviation of the eight-day flux error at the site scale is  $2.2 \text{ gC}\cdot\text{m}^{-2}\cdot\text{d}^{-1}$  (Figure 5c) instead of  $2.5 \text{ gC}\cdot\text{m}^{-2}\cdot\text{d}^{-1}$  at daily scale. For monthly fluxes (used by Piao *et al.* [2009] without any temporal error correlation), the coarse-resolution flux errors are correlated by 0.59 from one month to the next (Figure 5a). The standard deviation of the monthly error at site scale is  $2.0 \text{ gC}\cdot\text{m}^{-2}\cdot\text{d}^{-1}$  (Figure 5c). For fluxes at the scale of a square grid box of  $300 \text{ km} \times 300 \text{ km}$  (comparable to work by Piao *et al.* [2009] and Chevallier *et al.* [2010] with, respectively e-folding correlation lengths of 1000 km and 500 km) the between-grid-boxes spatial correlation exponentially decreases with the distance with an approximate e-folding length of 500 km (Figure 5b). The error standard deviation at the coarse scale reduces to  $1.2 \text{ gC}\cdot\text{m}^{-2}\cdot\text{d}^{-1}$  (Figure 5d). Combining spatial (300 km) and temporal (eight-day or monthly) averaging does not change the computed correlations but further reduces the error standard deviation to 1.1 and  $1.0 \text{ gC}\cdot\text{m}^{-2}\cdot\text{d}^{-1}$ , respectively, for eight-day and monthly fluxes.

#### 4. Discussion and Conclusions

[16] We estimated prior NEE errors for CO<sub>2</sub>-flux atmospheric inversions. Using the ORCHIDEE simulations as an example of prior information and based on observations made at 156 FLUXNET sites across the world, we described the mean, variances and correlations of the prior errors at the site scale with a 24-h temporal resolution. The model error

statistics differed substantially from those of the fluxes themselves. A model generalized these results to a range of larger temporal and spatial scales.

[17] There are four main limitations to this study. First, it only addresses natural vegetation fluxes and cannot consider the emissions from agricultural crops, fossil fuel, cement manufacturing and fires. Second, the ORCHIDEE simulations at the site scale are based on local meteorological measurements as boundary conditions and rely on an accurate description of the vegetation type, but boundary conditions for regional to global simulations can carry large biases. Low accuracy (i.e., large biases) of the coarse resolution boundary conditions (usually provided by weather centers) would tend to increase the spatial correlations of the errors compared to the situation described here. Third, it is not clear if our results apply to models other than ORCHIDEE. We argue that the correlation lengths would decrease with better model accuracy and vice versa. Fourth, the results are tied to the *La Thuile* database of the FLUXNET. This spatially heterogeneous network may poorly represent the error statistics outside North America and Europe, and, even there, they may not be dense enough to describe the fine features of the error statistics.

[18] Keeping these limitations in mind, the main characteristics of the prior errors may include: (i) that the simulated site-scale daily (24-h) flux is biased by a few tenths of a  $\text{gC}\cdot\text{m}^{-2}\cdot\text{d}^{-1}$  toward a too low carbon uptake, with random errors of standard deviations of  $2.5 \text{ gC}\cdot\text{m}^{-2}\cdot\text{d}^{-1}$  (by comparison, *Chevallier et al.* [2006] obtained  $2.0 \text{ gC}\cdot\text{m}^{-2}\cdot\text{d}^{-1}$  as the standard deviation for their 34 study sites without gap-filling); (ii) that some small positive spatial correlations of the error (unnoticed in work by *Chevallier et al.* [2006]) are seen within the first few hundred kilometers only; (iii) that correlations between areas dominated by a same vegetation type are not larger than the others, except in the case of deciduous broad-leaf forests; (iv) that positive temporal correlations exist within the first few weeks and after a year; and (v) that negative correlations are negligible. Aggregating the fluxes in space or time makes the covariance matrix of the error a bit denser and significantly reduces the variances. It should be highlighted that a side effect of aggregation is the increase of the observation errors and their complexity (as discussed by *Kaminski et al.* [2001]).

[19] The unknown mean distribution of the NEE of the terrestrial biosphere violates the assumption of unbiased prior error statistics in the Bayesian CO<sub>2</sub>-flux inversions. One may therefore wonder if assigned variances and correlations could empirically be tuned to account for biases. To meet the requirement of optimal estimation, any bias on the prior is reduced by the inversion, by the same amount as the prior error variances. However, it is common practice to inflate the prior variances in order to allow the inversion system to yield larger reductions of the bias, at the expense of increased random errors. As long as the biases of the prior fluxes are much smaller than their error standard deviations, there is no advantage to tune the prior correlations as well and biases can be neglected in the inversion design.

### Appendix A: List of the Selected FLUXNET Sites

[20] The identification codes of the FLUXNET sites used in this study are: AT-Neu [*Wohlfahrt et al.*, 2008], AU-How,

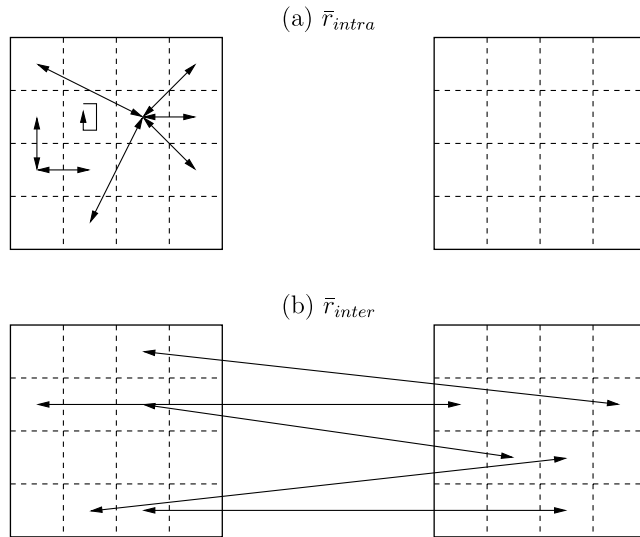
AU-Tum, AU-Wac, BE-Bra, BE-Lon, BE-Vie, BR-Ban, BR-Cax, BR-Ji2, BR-Ma2, BR-Sa1, BR-Sa3, BW-Ma1, CA-Ca1, CA-Ca2, CA-Ca3, CA-Gro, CA-Let [*Flanagan and Johnson*, 2005], CA-Man [*Dunn et al.*, 2007], CA-Mer [*Lafleur et al.*, 2003], CA-NS1, CA-NS2, CA-NS3, CA-NS4, CA-NS5, CA-NS6, CA-NS7, CA-Oas, CA-Obs, CA-Ojp, CA-Qcu [*Giasson et al.*, 2006], CA-Qfo [*Bergeron et al.*, 2007], CA-SF1 [*Mkhabela et al.*, 2009], CA-SF2 [*Mkhabela et al.*, 2009], CA-SF3 [*Mkhabela et al.*, 2009], CA-SJ1, CA-SJ2, CA-TP2, CA-TP3 [*Peichl et al.*, 2010], CA-TP4 [*Peichl and Arain*, 2007], CA-WP1 [*Cai et al.*, 2010], CH-Oe1, CN-HaM, CN-Xfs, CZ-BK1, CZ-BK2, DE-Bay, DE-Geb, DE-Hai, DE-Kli, DE-Meh, DE-Tha, DE-Wet, DK-Sor, ES-ES1, ES-ES2, ES-LMa, ES-VDA, FI-Hyy, FI-Kaa, FI-Sod, FR-Hes, FR-LBr [*Berbigier et al.*, 2001], FR-Lq1, FR-Lq2, FR-Pue, GF-Guy, HU-Bug, HU-Mat, IE-Ca1, IE-Dri, IL-Yat, IS-Gun, IT-Amp, IT-BCi, IT-Col, IT-Cpz [*Garbulsky et al.*, 2008], IT-Lav, IT-LMa, IT-Mal, IT-MBo, IT-Noe, IT-Non, IT-Pia, IT-PT1, IT-Ren, IT-Ro1 [*Rey et al.*, 2002], IT-Ro2 [*Tedeschi et al.*, 2006], IT-SRo, JP-Tak, JP-Tom, KR-Hnm, KR-Kw1, NL-Ca1, NL-Hor, NL-Loo, PT-Esp, PT-Mi1, PT-Mi2, RU-Che, RU-Cok, RU-Fyo, RU-Ha1 [*Belelli Marchesini et al.*, 2007], RU-Zot, SE-Deg, SE-Fla, SE-Nor, UK-ESa, U.S.-ARM, U.S.-Atq, U.S.-Aud, U.S.-Bkg, U.S.-Blo, U.S.-Bo1, U.S.-Bo2, U.S.-Brw, U.S.-Dk1, U.S.-Dk2, U.S.-Dk3, U.S.-FPe, U.S.-FR2, U.S.-Goo, U.S.-Ha1 [*Urbanski et al.*, 2007], U.S.-Ho1, U.S.-Ho2, U.S.-IB1, U.S.-IB2, U.S.-Ivo, U.S.-KS2, U.S.-Los, U.S.-LPH, U.S.-Me2 [*Thomas et al.*, 2009], U.S.-Me4 [*Law et al.*, 2001], U.S.-MMS, U.S.-MOz, U.S.-Ne1, U.S.-Ne2, U.S.-Ne3, U.S.-PFa, U.S.-SO2, U.S.-SO4, U.S.-SP2, U.S.-SP3, U.S.-SRM, U.S.-Syv, U.S.-Ton [*Ma et al.*, 2007], U.S.-UMB, U.S.-Var [*Ma et al.*, 2007], U.S.-WBW, U.S.-WCr, U.S.-Wi4, U.S.-Wkg, U.S.-Wrc, VU-Coc, ZA-Kru.

[21] The site citations above are those given at <http://www.fluxdata.org/> (accessed 5 October 2010), as requested by the *La Thuile* data policy. A description of each site can be found at <http://www.fluxdata.org:8080/SitePages/> (accessed 16 July 2010).

### Appendix B: Aggregation Model

[22] In the following, the high-resolution (in space or time) error statistics are symbolized by lowercase letters ( $\sigma$  for a standard deviation and  $r$  for a correlation), while capital letters ( $S$  for a standard deviation and  $R$  for a correlation) represent the coarse resolution (in space or time) error statistics. We represent the high-resolution errors as a stationary field of normally and identically distributed random variables, all with zero mean and the same standard deviation  $\sigma$ . The stationarity property implies that the correlations depend on the time-space distance between the pairs of random variables but not on their absolute position in time and space. The high-resolution standard deviation  $\sigma$  is set to  $2.5 \text{ gC}\cdot\text{m}^{-2}\cdot\text{d}^{-1}$  (i.e., the standard deviation of the model-minus-observation differences for daily fluxes at site scale). The high resolution correlations are represented (i) by a continuous parameterization of the all-site autocorrelation as a function of the lag time (equation (B1) and Figure 4) and (ii) by a continuous parameterization of the median





**Figure B1.** Illustration of the definition of the mean correlations (a)  $\bar{r}_{intra}$  and (b)  $\bar{r}_{inter}$ . Dotted lines represent the boundaries of high-resolution fluxes and continuous lines correspond to two low resolution fluxes. The arrows illustrate the pairs over which the average correlations are computed.

correlation as a function of the lag distance between pairs of sites (equation (B2) and Figure 2):

$$r_{\tau}(\tau) = 0.767 - 0.018 \cdot \tau + (0.01222 \cdot \tau)^2 - (0.00809 \cdot \tau)^3 + (0.00513 \cdot \tau)^4 - (0.0012 \cdot \tau)^5 + 0.216/(1 + 10 \cdot \tau) \quad (\text{B1})$$

$$r_{\delta}(\delta) = 1/(0.032 \cdot \delta + 1) \quad (\text{B2})$$

with  $r_{\tau}$  the dependency of the correlation as a function of lag time  $\tau$ , in days, and  $r_{\delta}$  the correlation as a function of the lag distance  $\delta$ , in km. The parameterization of  $r_{\tau}$  (equation (B1)) is only valid for lag times less than 365 days. Equations (B1) and (B2) have been obtained by regression on the data. They fit the thick lines of Figures 2 and 4 with a root mean square of 0.01 and 0.06, respectively.

[23] By developing the variance estimator (i.e.,  $\sum_i x_i^2/n$ , with  $x_i$  the  $n$  random samples of a random variable with zero mean) for the errors of the coarse-resolution NEE fluxes (i.e., time- and space-normalized), one can show that:

$$S^2 = \sigma^2 \cdot \bar{r}_{intra} \quad (\text{B3})$$

with  $\bar{r}_{intra}$  being the arithmetic mean of the correlations  $r$  between all possible pairs of high-resolution-fluxes within the coarse-resolution fluxes. The definition of  $\bar{r}_{intra}$  is illustrated in Figure B1a.

[24] Similarly, the Pearson correlation between the errors of a pair of coarse-resolution NEE fluxes  $f_1$  and  $f_2$  can be expressed as:

$$R(f_1, f_2) = \bar{r}_{inter}(f_1, f_2)/\bar{r}_{intra} \quad (\text{B4})$$

where  $\bar{r}_{inter}(f_1, f_2)$  is the arithmetic mean of the distant correlations between all the different possible pairs of fine-

resolution NEE fluxes that it is possible to construct from those inside coarse flux regions  $f_1$  and  $f_2$ . The definition of  $\bar{r}_{inter}$  is illustrated in Figure B1b.

[25] The computation of  $\bar{r}_{inter}(f_1, f_2)$  and  $\bar{r}_{intra}$  stems from the above-described high-resolution statistics ( $\sigma$  and the correlations  $r$ ) and the geometry of the fluxes. Equations (B3) and (B4) quantify how aggregation dampens the higher frequencies of the error (equation (B3)), while increasing the low (correlated) frequencies (equation (B4)).

[26] The last hypothesis of our error model is that spatial upscaling is independent from temporal upscaling. In this case, the coarse-scale standard deviation after aggregation in both space and time can be simply simulated by applying equation (B3) in each dimension successively, while coarse-scale correlations follow equation (B4) in each dimension separately.

[27] **Acknowledgments.** The authors thank the participants of the Transcom session about prior errors that was held on 20 September 2009 in Jena, Germany, for fruitful discussions. The study was co-funded by the European Commission under the EU Seventh Research Framework Programme (grant agreement 212196, COCOS) and by the French Agence Nationale pour la Recherche (grant agreement ANR-08-SYSC-014, MSDAG). The authors would like to thank N. Viovy (LSCE) who provided the gap-filling tools for the local atmospheric variables, F. Marabelle and his team at LSCE for computational support, Gil Bohrer (Ohio State University) and two anonymous reviewers for their stimulating comments on the text. This work used eddy covariance data acquired by the FLUXNET community and in particular by the following networks: AmeriFlux (U.S. Department of Energy, Biological and Environmental Research, Terrestrial Carbon Program (DE-FG02-04ER63917 and DE-FG02-04ER63911)), AfriFlux, AsiaFlux, CarboAfrica, CarboEuropeIP, CarboItaly, CarboMont, ChinaFlux, FLUXNET-Canada Research Network/Canadian Carbon Program (supported by CFCAS, NSERC, BIOCAP, Environment Canada, and NRCAN), GreenGrass, KoFlux, LBA, NECC, OzFlux, TCOS-Siberia, and the USCCC. We acknowledge the financial support to the eddy covariance data harmonization provided by CarboEuropeIP, FAO-GTOS-TCO, iLEAPS, Max Planck Institute for Biogeochemistry, the National Science Foundation, the University of Tuscia, Université Laval, Environment Canada, and the U.S. Department of Energy, and the database development and technical support from Berkeley Water Center, Lawrence Berkeley National Laboratory, Microsoft Research eScience, Oak Ridge National Laboratory, the University of California, Berkeley, and the University of Virginia.

## References

- Aubinet, M., et al. (1999), Estimates of the annual net carbon and water exchange of forests: The EUROFLUX methodology, *Adv. Ecol. Res.*, 30, 113–175, doi:10.1016/S0065-2504(08)60018-5.
- Baker, D. F., S. C. Doney, and D. S. Schimel (2006), Variational data assimilation for atmospheric CO<sub>2</sub>, *Tellus, Ser. B*, 58, 359–365, doi:10.1111/j.1600-0889.2006.00218.x.
- Baldocchi, D. (2008), Breathing of the terrestrial biosphere: Lessons learned from a global network of carbon dioxide flux measurement systems, *Aust. J. Bot.*, 56(1), 1–26, doi:10.1071/BT07151.
- Baldocchi, D., et al. (2001), FLUXNET: A new tool to study the temporal and spatial variability of ecosystem-scale carbon dioxide, water vapor, and energy flux densities, *Bull. Am. Meteorol. Soc.*, 82, 2415–2434, doi:10.1175/1520-0477(2001)082<2415:FANTTS>2.3.CO;2.
- Belelli Marchesini, L., D. Papale, M. Reichstein, N. Vuichard, N. Tchebakova, and R. Valentini (2007), Carbon balance assessment of a natural steppe of southern Siberia by multiple constraint approach, *Biogeosciences*, 4, 581–595, doi:10.5194/bg-4-581-2007.
- Berbigier, P., J. M. Bonnefond, and P. Mellmann (2001), CO<sub>2</sub> and water vapour fluxes for 2 years above Euroflux forest site, *Agric. For. Meteorol.*, 108, 183–197, doi:10.1016/S0168-1923(01)00240-4.
- Bergeron, O., H. A. Margolis, T. A. Black, C. Coursolle, A. L. Dunn, A. G. Barr, and S. C. Wofsy (2007), Comparison of CO<sub>2</sub> fluxes over three boreal black spruce forests in Canada, *Global Change Biol.*, 13, 89–107, doi:10.1111/j.1365-2486.2006.01281.x.
- Berrisford, P., D. Dee, K. Fielding, M. Fuentes, P. Kallberg, S. Kobayashi, and S. Uppala (2009), The ERA-Interim archive, *ERA Rep. 1*, 16 pp., Eur. Cent. for Medium-Range Weather Forecasting, Reading, U. K.

- Bocquet, M., L. Wu, and F. Chevallier (2011), Bayesian design of control space for optimal assimilation of observations. I: Consistent multiscale formalism, *Q. J. R. Meteorol. Soc.*, *137*, 1340–1356, doi:10.1002/qj.837.
- Bousquet, P., P. Peylin, P. Ciais, C. Le Quéré, P. Friedlingstein, and P. Tans (2000), Regional changes in carbon dioxide fluxes of land and oceans since 1980, *Science*, *290*, 1342–1346, doi:10.1126/science.290.5495.1342.
- Cai, T., L. B. Flanagan, and K. H. Syed (2010), Warmer and drier conditions stimulate respiration more than photosynthesis in a boreal peatland ecosystem: Analysis of automatic chambers and eddy covariance measurements, *Plant Cell Environ.*, *33*, 394–407, doi:10.1111/j.1365-3040.2009.02089.x.
- Chevallier, F., M. Fisher, P. Peylin, S. Serran, P. Bousquet, F.-M. Bréon, A. Chédin, and P. Ciais (2005), Inferring CO<sub>2</sub> sources and sinks from satellite observations: Method and application to TOVS data, *J. Geophys. Res.*, *110*, D24309, doi:10.1029/2005JD006390.
- Chevallier, F., N. Viovy, M. Reichstein, and P. Ciais (2006), On the assignment of prior errors in Bayesian inversions of CO<sub>2</sub> surface fluxes, *Geophys. Res. Lett.*, *33*, L13802, doi:10.1029/2006GL026496.
- Chevallier, F., et al. (2010), CO<sub>2</sub> surface fluxes at grid point scale estimated from a global 21-year reanalysis of atmospheric measurements, *J. Geophys. Res.*, *115*, D21307, doi:10.1029/2010JD013887.
- Demarty, J., F. Chevallier, A. D. Friend, N. Viovy, S. Piao, and P. Ciais (2007), Assimilation of global MODIS leaf area index retrievals within a terrestrial biosphere model, *Geophys. Res. Lett.*, *34*, L15402, doi:10.1029/2007GL030014.
- Dunn, A. L., C. C. Barford, S. C. Wofsy, M. L. Goulden, and B. C. Daube (2007), A long-term record of carbon exchange in a boreal black spruce forest: Means, responses to interannual variability and decadal trends, *Global Change Biol.*, *13*, 577–590, doi:10.1111/j.1365-2486.2006.01221.x.
- Enting, I. G., C. M. Trudinger, and R. J. Francey (1995), A synthesis inversion of the concentration and  $\delta^{13}\text{C}$  atmospheric CO<sub>2</sub>, *Tellus, Ser. B*, *47*, 35–52.
- Feng, L., P. I. Palmer, H. Bösch, and S. Dance (2009), Estimating surface CO<sub>2</sub> fluxes from space-borne CO<sub>2</sub> dry air mole fraction observations using an ensemble Kalman Filter, *Atmos. Chem. Phys.*, *9*, 2619–2633, doi:10.5194/acp-9-2619-2009.
- Flanagan, L. B., and B. G. Johnson (2005), Interacting effects of temperature, soil moisture and plant biomass production on ecosystem respiration in a northern temperate grassland, *Agric. For. Meteorol.*, *130*, 237–253, doi:10.1016/j.agrformet.2005.04.002.
- Garbulsky, M. F., J. Penuelas, D. Papale, and I. Filella (2008), Remote estimation of carbon dioxide uptake by a Mediterranean forest, *Global Change Biol.*, *14*, 2860–2867, doi:10.1111/j.1365-2486.2008.01684.x.
- Giasson, M.-A., C. Coursolle, and H. A. Margolis (2006), Ecosystem-level carbon fluxes from a boreal cutover in eastern Canada before and after scarification, *Agric. For. Meteorol.*, *140*, 23–40, doi:10.1016/j.agrformet.2006.08.001.
- Gurney, K. R., et al. (2002), Towards robust regional estimates of CO<sub>2</sub> sources and sinks using atmospheric transport models, *Nature*, *415*(6872), 626–630, doi:10.1038/415626a.
- Hollinger, D. Y., and A. D. Richardson (2005), Uncertainty in eddy covariance measurements and its application to physiological models, *Tree Physiol.*, *25*, 873–885.
- Kaminski, T., P. J. Rayner, M. Heimann, and I. G. Enting (2001), On aggregation errors in atmospheric transport inversions, *J. Geophys. Res.*, *106*, 4703–4715, doi:10.1029/2000JD900581.
- Krinner, G., N. Viovy, N. de Noblet-Ducoudré, J. Ogée, J. Polcher, P. Friedlingstein, P. Ciais, S. Sitch, and I. C. Prentice (2005), A dynamic global vegetation model for studies of the coupled atmosphere-biosphere system, *Global Biogeochem. Cycles*, *19*, GB1015, doi:10.1029/2003GB002199.
- Lafleur, P. M., N. T. Roulet, J. L. Bubier, S. Frolking, and T. R. Moore (2003), Interannual variability in the peatland-atmosphere carbon dioxide exchange at an ombrotrophic bog, *Global Biogeochem. Cycles*, *17*(2), 1036, doi:10.1029/2002GB001983.
- Lasslop, G., M. Reichstein, J. Kattge, and D. Papale (2008), Influences of observation errors in eddy flux data on inverse model parameter estimation, *Biogeosciences*, *5*, 1311–1324, doi:10.5194/bg-5-1311-2008.
- Law, B. E., P. Thornton, J. Irvine, S. Van Tuyl, and P. Anthony (2001), Carbon storage and fluxes in ponderosa pine forests at different developmental stages, *Global Change Biol.*, *7*, 755–777, doi:10.1046/j.1354-1013.2001.00439.x.
- Ma, S., D. D. Baldocchi, L. Xu, and T. Hehn (2007), Inter-annual variability in carbon dioxide exchange of an oak/grass savanna and open grassland in California, *Agric. For. Meteorol.*, *147*, 157–171, doi:10.1016/j.agrformet.2007.07.008.
- Michalak, A. M., A. Hirsch, L. Bruhwiler, K. R. Gurney, W. Peters, and P. P. Tans (2005), Maximum likelihood estimation of covariance parameters for Bayesian atmospheric trace gas surface flux inversions, *J. Geophys. Res.*, *110*, D24107, doi:10.1029/2005JD005970.
- Mkhabela, M. S., et al. (2009), Comparison of carbon dynamics and water use efficiency following fire and harvesting in Canadian boreal forests, *Agric. For. Meteorol.*, *149*, 783–794, doi:10.1016/j.agrformet.2008.10.025.
- Papale, D., et al. (2006), Towards a standardized processing of Net Ecosystem Exchange measured with eddy covariance technique: Algorithms and uncertainty estimation, *Biogeosciences*, *3*, 571–583, doi:10.5194/bg-3-571-2006.
- Peichl, M., J. J. Brodeur, M. Khomik, and M. A. Arain (2010), Biometric and eddy-covariance based estimates of carbon fluxes in an age-sequence of temperate pine forests, *Agric. For. Meteorol.*, *150*, 952–965, doi:10.1016/j.agrformet.2010.03.002.
- Peters, W., et al. (2007), An atmospheric perspective on North American carbon dioxide exchange: CarbonTracker, *Proc. Natl. Acad. Sci. U. S. A.*, *104*, 18,925–18,930, doi:10.1073/pnas.0708986104.
- Piao, S., J. Fang, P. Ciais, P. Peylin, Y. Huang, S. Sitch, and T. Wang (2009), The carbon balance of terrestrial ecosystems in China, *Nature*, *458*, 1009–1013, doi:10.1038/nature07944.
- Rey, A., E. Pegoraro, V. Tedeschi, I. De Parri, P. G. Jarvis, and R. Valentini (2002), Annual variation in soil respiration and its components in a coppice oak forest in central Italy, *Global Change Biol.*, *8*, 851–866, doi:10.1046/j.1365-2486.2002.00521.x.
- Rödenbeck, C. (2005), Estimating CO<sub>2</sub> sources and sinks from atmospheric mixing ratio measurements using a global inverse of atmospheric transport, *Tech. Rep. 6*, Max-Planck-Inst. für Biogeochem., Jena, Germany. [Available at [http://www.bgc-jena.mpg.de/mpg/websiteBiogeochemie/Publikationen/Technical\\_Reports/tech\\_report6.pdf](http://www.bgc-jena.mpg.de/mpg/websiteBiogeochemie/Publikationen/Technical_Reports/tech_report6.pdf).]
- Tedeschi, V., A. Rey, G. Manca, R. Valentini, P. G. Jarvis, and M. Borghetti (2006), Soil respiration in a Mediterranean oak forest at different developmental stages after coppicing, *Global Change Biol.*, *12*, 110–121, doi:10.1111/j.1365-2486.2005.01081.x.
- Thomas, C. K., B. E. Law, J. Irvine, J. G. Martin, J. C. Pettijohn, and K. J. Davis (2009), Seasonal hydrology explains interannual and seasonal variation in carbon and water exchange in a semiarid mature ponderosa pine forest in central Oregon, *J. Geophys. Res.*, *114*, G04006, doi:10.1029/2009JG001010.
- Urbanski, S., C. Barford, S. C. Wofsy, C. Kucharik, E. Pyle, J. Budney, K. McKain, D. Fitzjarrald, M. Czikowsky, and J. W. Munger (2007), Factors controlling CO<sub>2</sub> exchange on timescales from hourly to decadal at Harvard Forest, *J. Geophys. Res.*, *112*, G02020, doi:10.1029/2006JG000293.
- Wohlfahrt, G., A. Hammerle, A. Haslwanter, M. Bahn, U. Tappeiner, and A. Cernusca (2008), Seasonal and inter-annual variability of the net ecosystem CO<sub>2</sub> exchange of a temperate mountain grassland: Effects of weather and management, *J. Geophys. Res.*, *113*, D08110, doi:10.1029/2007JD009286.
- Zupanski, D., A. S. Denning, M. Uliasz, M. Zupanski, A. E. Schuh, P. J. Rayner, W. Peters, and K. D. Corbin (2007), Carbon flux bias estimation employing Maximum Likelihood Ensemble Filter (MLEF), *J. Geophys. Res.*, *112*, D17107, doi:10.1029/2006JD008371.

M. A. Arain, School of Geography and Earth Sciences, McMaster University, 1280 Main St. W., Hamilton, ON L8S 4K1, Canada.

M. Bocquet, CERE, École des Ponts ParisTech-EDF R&D, Université Paris-Est, Champs-sur-Marne, F-77455 Marne la Vallée CEDEX 2, France.

A. Cescatti, Climate Change Unit, European Commission–DG Joint Research Centre, Via Fermi 2749, Ispra I-21027, Italy.

J. Chen, Landscape Ecology and Ecosystem Science, Bowman-Oddy Laboratories, University of Toledo, Toledo, OH 43606, USA.

F. Chevallier, P. Ciais, F. Maignan, and T. Wang, Laboratoire des Sciences du Climat et de l'Environnement/IPSL, CEA-CNRS-UVSQ, F-91191 Gif-sur-Yvette, France. (frederic.chevallier@lsce.ipsl.fr)

A. J. Dolman, Department of Hydrology and Geo-Environmental Sciences, Vrije Universiteit, NL-1081 HV Amsterdam, Netherlands.

B. E. Law, College of Forestry, Oregon State University, Corvallis, OR 97331, USA.

H. A. Margolis, Centre d'Étude de la Forêt, Faculté de foresterie, de géographie et de géomatique, Université Laval, Québec City, QC G1V 0A6, Canada.

L. Montagnani, Faculty of Sciences and Technologies, University of Bolzano, Bolzano I-39100, Italy.

E. J. Moors, Alterra, NL-6708 PB Wageningen, Netherlands.