



**HAL**  
open science

## A reconstruction of Lehmer's table of factors (1909)

Denis Roegel

► **To cite this version:**

Denis Roegel. A reconstruction of Lehmer's table of factors (1909). [Research Report] 2011. hal-00654442

**HAL Id: hal-00654442**

**<https://inria.hal.science/hal-00654442v1>**

Submitted on 21 Dec 2011

**HAL** is a multi-disciplinary open access archive for the deposit and dissemination of scientific research documents, whether they are published or not. The documents may come from teaching and research institutions in France or abroad, or from public or private research centers.

L'archive ouverte pluridisciplinaire **HAL**, est destinée au dépôt et à la diffusion de documents scientifiques de niveau recherche, publiés ou non, émanant des établissements d'enseignement et de recherche français ou étrangers, des laboratoires publics ou privés.

A reconstruction of  
Lehmer's table of factors  
(1909)

Denis Roegel

9 October 2011



## 1 Lehmer (1867–1938)

Derrick Norman Lehmer was born in 1867 and obtained his PhD in mathematics in 1900. He was then appointed as an instructor at the University of California at Berkeley. He was promoted professor at Berkeley in 1918 and taught there until he retired in 1937.

Lehmer became interested in prime numbers and factors very early and he published his table of factors in 1909 and his table of primes in 1914. In 1917, he also published a textbook on projective geometry.

During the 1920s, Lehmer worked with his son Derrick Henry Lehmer (1905–1991) on factor stencils, for factoring numbers using cards with punched holes. These factor stencils were announced in 1929 by Lehmer. He later came up with mechanical devices to factor numbers.

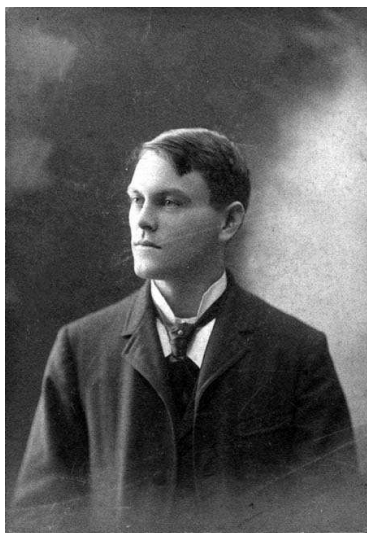


Figure 1: D. N. Lehmer in 1899. (courtesy Ronald Lehmer)

## 2 Lehmer’s table of factors (1909)

Lehmer’s table of factors [27] was probably the first published table giving the smallest factors for all integers non divisible by 2, 3, 5, and 7 up to 10 017 000. It was therefore consolidating the efforts of Felkel [14, 15, 16, 17], Chernac [9], Burckhardt [8, 5, 6], Crelle, Dase [10, 11, 12], Kulik [25], Glaisher [18, 19, 20], and a few others.

### 2.1 Structure

The table of factors occupies 477 pages, numbered 0 to 476, and covering a range of 21000 values each, so that the table goes from 1 to  $21000 \times 477 = 10\,017\,000$ . Each page has 48 columns numbered 1, 11, 13, 17, 19, 23, 29, 31, 37, 41, 43, 47, 53, 59, 61, 67, 71, 73, 79, 83, 89, 97, 101, 103, 107, 109, 113, 121, 127, 131, 137, 139, 143, 149, 151, 157, 163, 167, 169, 173, 179, 181, 187, 191, 193, 197, 199, and 209, which are all numbers from

1 to  $209 = 210 - 1 = 2 \times 3 \times 5 \times 7 - 1$  not divisible by 2, 3, 5, and 7. The lines are numbered from 0 to 99, so that the cell at the intersection of column  $c$  and line  $l$  on page  $p$  corresponds to number  $p \times 21000 + l \times 210 + c$ . For instance, on the first page ( $p = 0$ ), at the intersection of line number 4 and column number 1, we find the value 29. This value corresponds to the number  $4 \times 210 + 1 = 841$ , and it is the smallest factor of  $841 = 29^2$ . Each line therefore corresponds to an interval of 210 integers. When a number is prime, the content of the cell is filled with dashes.<sup>1</sup>

In the column at the left of each page are found two numbers. The leftmost number is the number of hundreds of thousands, and the one to its right is the number of thousands. On the last page of the table (page 476), these two numbers are 99 and 96, a value which is also indicated at the top of the table (9 996 000). We can therefore see immediately that 9 996 001 is prime, that  $9\,996\,000 + 2 \times 210 + 11 = 9\,996\,431$  has 337 for its smallest factor, and so on.

A number  $n$  can be located in the table if we write it in the form  $a \times 21000 + b \times 210 + c$ , and it then suffices to go on page  $a$ , and check the value in the cell for line number  $b$  and column number  $c$ . Another possibility is to write  $n = 210 \times Q + R$  and  $Q$  is then equal to  $100a + b$ , where  $a$  and  $b$  are obtained at sight. But since this is all somewhat cumbersome, Lehmer provided an auxiliary table.

## 2.2 Auxiliary table

This auxiliary table is printed in the introduction, but several free sheets were also provided so that they could be used easily on any page.<sup>2</sup>

The table is used as follows, as explained by Lehmer in his introduction to the table [27]. We assume that a 7-digit number  $abcdefg$  has to be located in the main table, where the leftmost digits may be equal to 0.

The digits  $ab$  are found in the first column on each page. The next digits  $cd$  are found in the second column. For instance, for 3 772 921, 37 is found in the first column of page 179 and 72 in the second column on line 62 of that page.

The line on which the value  $cd$  occurs also occurs in the auxiliary table. So, we consider the number 62 in the first column of the auxiliary table. This number belongs to a compartment which covers two cells of line 61, the whole lines 62 to 65, and part of line 66. The numbers written in this area are 00 to 99 and one must look for the value  $ef$ , in this case for 92. This value  $ef$  occurs on line 66 of the auxiliary table. The cell corresponding to the number therefore occurs on line 66.

At the top of the column containing 92 are the values 61 and 67. Since the initial number ends with 1, we choose the value 61 in the heading. This is the column number. So, the cell sought is the one at line 66 and column 61 of page 179, and this cell contains the factor 677. Therefore, the smallest factor of 3 772 921 is 677.

The auxiliary table is meant to locate numbers which are in the main table, and will not work for numbers which are divisible by 2, 3, 5, or 7. If one attempts to use it with

---

<sup>1</sup>As observed by Lehmer [27, p. VIII], Lebesgue used a similar layout for his table of divisors to 115500 published in 1864 [26]. Lebesgue split the 48 columns in two parts, with 24 columns per page. He also used symbols as prefixes for some primes, in a way similar to the one employed by Kulik in 1825 [24].

<sup>2</sup>In the copy that we consulted, there were no less than four such sheets.

such a number, the process will block, and this will then hint to the divisibility by 2, 3, 5, or 7.

## 2.3 Kulik's tables

During the preparation of his table of factors, Lehmer used the tables of Burckhardt, Dase, and Glaisher, and he had planned to compare his manuscript with the 10th million computed by Dase and Rosenberg. Unfortunately, this 10th million seemed to have vanished and could not be found at the Academy of sciences in Berlin [27, p. VIII]. Lehmer's attention was then drawn to Kulik's tables and he contacted the Academy of sciences in Vienna in order to be able to consult Kulik's manuscript [25]. Lehmer eventually was able to get several volumes of Kulik's work sent to the United States, and he did a thorough analysis of Kulik's first volume.<sup>3</sup> Lehmer published descriptions of Kulik's tables in the introductions of his tables of factors [27] and of primes [28].

## 2.4 Erratas

In the introduction of his table, Lehmer gives erratas for the tables of Burckhardt, Dase, Glaisher, and Kulik.

## 2.5 The printing of the table

The table was first in manuscript form, then typewritten. These pages were then photographed, and finally transferred on zinc plates. The photographs were used for proof-readings, and some errors were corrected on the zinc plates. This procedure avoided the risk of accidental type misplacement during the printing process.

## 3 Lehmer's table of primes (1914)

In 1914, Lehmer published what is basically a subset of his table of factors, namely a table of all primes over a slightly smaller interval, namely from 1 to 10 006 721. Although five years elapsed between both tables, the work probably afforded less time and this table was probably planned only late, not at the same time as the table of factors.

## 4 Additional page

In 1949, Jarden and Katz extended Lehmer's table with one page, page number 477, which was also reconstructed here [23]. Lehmer's table, with this additional page, was used by Beeger for his table of the 11th million [3, 2] .

---

<sup>3</sup>For a detailed description of the correspondence between Lehmer and the Academy of sciences in Vienna, see our description of Kulik's tables [44].

DOV JARDEN AND ALEXANDER KATZ

10 017 000-10 038 000

נומך 477 לוח המרוקים של ד.נ. להמר  
בר ירון ואכנסדר נץ

477	1	11	13	17	19	23	29	31	37	41	43	47	53	59	61	67	71	73	79	83	89	97	101	103	107	109	113	121	127	131	137	139	143	149	151	157	163	167	169	173	179	191	193	197	199	209																																																		
100 17	01	04	05	08	09	10	11	12	13	14	15	16	17	18	19	20	21	22	23	24	25	26	27	28	29	30	31	32	33	34	35	36	37	38	39	40	41	42	43	44	45	46	47	48	49	50	51	52	53	54	55	56	57	58	59	60	61	62	63	64	65	66	67	68	69	70	71	72	73	74	75	76	77	78	79	80	81	82	83	84	85	86	87	88	89	90	91	92	93	94	95	96	97	98	99	100

6

Figure 2: The additional page 477 by Jarden and Katz [23].

## References

The following list covers the most important references<sup>4</sup> related to Lehmer's table. Not all items of this list are mentioned in the text, and the sources which have not been seen are marked so. We have added notes about the contents of the articles in certain cases.

- [1] Raymond Clare Archibald. *Mathematical table makers: Portraits, paintings, busts, monuments; bio-bibliographical notes*. New York: Scripta Mathematica, 1948.  
[contains sections on D. N. Lehmer and D. H. Lehmer]
- [2] Nicolaas George Wijnand Henri Beeger. Table of the least factor of the numbers that are not divisible by 2, 3, 5 of the eleventh million (review). *Mathematical Tables and other Aids to Computation*, 10(53):36, 1956.
- [3] Nicolaas George Wijnand Henri Beeger, Albert Gloden, Luigi Poletti, and Robert James Porter. *Liste des nombres premiers du onzième million (plus précisément de 10 006 741 à 10 999 997) d'après les tables manuscrites de J. Ph. Kulik, L. Poletti et R. J. Porter*. Amsterdam: imprimerie WERTO, 1951.  
[reconstructed in [32]]
- [4] Maarten Bullynck. Factor tables 1657–1817, with notes on the birth of number theory. *Revue d'histoire des mathématiques*, 16(2):133–216, 2010.
- [5] Johann Karl Burckhardt. *Table des diviseurs pour tous les nombres du deuxième million, etc.* Paris: Vve Courcier, 1814. [reconstructed in [34]]
- [6] Johann Karl Burckhardt. *Table des diviseurs pour tous les nombres du troisième million, etc.* Paris: Vve Courcier, 1816. [reconstructed in [35]]
- [7] Johann Karl Burckhardt. *Table des diviseurs pour tous les nombres des 1<sup>er</sup>, 2<sup>e</sup> et 3<sup>e</sup> million, etc.* Paris: Vve Courcier, 1817.
- [8] Johann Karl Burckhardt. *Table des diviseurs pour tous les nombres du premier million, etc.* Paris: Vve Courcier, 1817. [reconstructed in [33]]
- [9] Ladislaus Chernac. *Cribrum arithmeticum sive, tabula continens numeros primos, a compositis segregatos, occurrentes in serie numerorum ab unitate progredientium, usque ad decies centena millia, et ultra haec, ad viginti millia (1020000). Numeris compositis, per 2, 3, 5 non dividuis, adscripti sunt divisores simplices, non minimi tantum, sed omnino omnes*. Deventer: J. H. de Lange, 1811. [reconstructed in [36]]

---

<sup>4</sup>**Note on the titles of the works:** Original titles come with many idiosyncrasies and features (line splitting, size, fonts, etc.) which can often not be reproduced in a list of references. It has therefore seemed pointless to capitalize works according to conventions which not only have no relation with the original work, but also do not restore the title entirely. In the following list of references, most title words (except in German) will therefore be left uncapitalized. The names of the authors have also been homogenized and initials expanded, as much as possible.

The reader should keep in mind that this list is not meant as a facsimile of the original works. The original style information could no doubt have been added as a note, but we have not done it here.



- [10] Johann Martin Zacharias Dase. *Factoren-tafeln für alle Zahlen der siebenten Million etc.* Hamburg: Perthes-Besser & Mauke, 1862. [reconstructed in [39]]
- [11] Johann Martin Zacharias Dase. *Factoren-tafeln für alle Zahlen der achten Million etc.* Hamburg: Perthes-Besser & Mauke, 1863. [reconstructed in [37]]
- [12] Johann Martin Zacharias Dase and H. Rosenberg. *Factoren-tafeln für alle Zahlen der neunten Million etc.* Hamburg: Perthes-Besser & Mauke, 1865. [reconstructed in [38]]
- [13] Leonard Eugene Dickson. Review of D. E. Lehmer, *Factor Table for the First Ten Millions*, 1909. *Bulletin of the American Mathematical Society*, 17(1):36–38, 1910.
- [14] Anton Felkel. *Tafel aller einfachen Factoren der durch 2, 3, 5 nicht theilbaren Zahlen von 1 bis 10 000 000. I. Theil. Enthaltend die Factoren von 1 bis 144000.* Wien: von Ehelenschen, 1776. [There is also a Latin edition [15] of this first part.] [reconstructed in [40]]
- [15] Anton Felkel. *Tabula omnium factorum simplicium numerorum per 2, 3, 5 non divisibilium, ab 1 usque 10 000 000. Pars I. Exhibens factores ab 1 usque 144000.* Wien: A. Gheleniana, 1777. [Latin version of [14].] [not seen] [reconstructed in [40]]
- [16] Anton Felkel. *Tabula factorum. Pars II. Exhibens factores numerorum ab 144001 usque 336000.* Wien: A. Gheleniana, 1777? [reconstructed in [40]]
- [17] Anton Felkel. *Tabula factorum. Pars III. Exhibens factores numerorum ab 336001 usque 408000.* Wien: A. Gheleniana, 1777? [reconstructed in [40]]
- [18] James Glaisher. *Factor table for the fourth million etc.* London: Taylor and Francis, 1879. [reconstructed in [42]]
- [19] James Glaisher. *Factor table for the fifth million etc.* London: Taylor and Francis, 1880. [reconstructed in [41]]
- [20] James Glaisher. *Factor table for the sixth million etc.* London: Taylor and Francis, 1883. [reconstructed in [43]]
- [21] James Whitbread Lee Glaisher. *Report of the committee on mathematical tables.* London: Taylor and Francis, 1873. [Also published as part of the “Report of the forty-third meeting of the British Association for the advancement of science,” London: John Murray, 1874. A review by R. Radau was published in the *Bulletin des sciences mathématiques et astronomiques*, volume 11, 1876, pp. 7–27]
- [22] James Whitbread Lee Glaisher. Table, mathematical. In Hugh Chisholm, editor, *The Encyclopædia Britannica, 11th edition*, volume 26, pages 325–336. Cambridge, England: at the University Press, 1911.
- [23] Dov Jarden and Aleksander Katz. Additional page 477 to D. N. Lehmer’s Factor Table. *Riveon Lematematika*, 3(3):49, 1949. [summary on p. 52]

- [24] Jakob Philip Kulik. *Divisores numerorum decies centena millia non excedentium etc. — Tafeln der einfachen Faktoren aller Zahlen unter Einer Million etc.* Graz: Miller, 1825. [reconstructed in [45]]
- [25] Jakob Philipp Kulik. Magnus Canon Divisorum pro omnibus numeris per 2, 3 et 5 non divisibilibus, et numerorum primorum interjacentium ad Millies centena millia accuratius ad 100330201 usque, ca. 1825–1863. [7 manuscript volumes deposited in the Library of the Academy of Sciences, Vienna] [reconstructed in [44]]
- [26] Victor-Amédée Lebesgue. *Tables diverses pour la décomposition des nombres en leurs facteurs premiers.* Paris: Gauthier-Villars, 1864.
- [27] Derrick Norman Lehmer. *Factor table for the first ten millions containing the smallest factor of every number not divisible by 2, 3, 5, or 7 between the limits 0 and 10017000.* Washington, D.C.: Carnegie Institution of Washington, 1909.
- [28] Derrick Norman Lehmer. *List of prime numbers from 1 to 10,006,721.* Washington, D.C.: Carnegie Institution of Washington, 1914. [reconstructed in [46]]
- [29] George Abram Miller. D. N. Lehmer: Factor Tables for the First Ten Millions, etc. (review). *Science*, 32(822):432–433, 1910.
- [30] D. Jarden & A. Katz, “Additional page 477 to D. N. Lehmer’s Factor Table” (census). *Mathematical Tables and other Aids to Computation*, 4(29):29, January 1950.
- [31] D. Jarden & A. Katz, “Additional page (477) to D. N. Lehmer’s Factor Table” (census). *Mathematical Tables and other Aids to Computation*, 4(31):145, July 1950.
- [32] Denis Roegel. A reconstruction of Beeger’s table of primes (1951). Technical report, LORIA, Nancy, 2011. [This is a reconstruction of the table in [3].]
- [33] Denis Roegel. A reconstruction of Burckhardt’s table of factors (first million, 1817). Technical report, LORIA, Nancy, 2011. [This is a reconstruction of the table in [8].]
- [34] Denis Roegel. A reconstruction of Burckhardt’s table of factors (second million, 1814). Technical report, LORIA, Nancy, 2011. [This is a reconstruction of the table in [5].]
- [35] Denis Roegel. A reconstruction of Burckhardt’s table of factors (third million, 1816). Technical report, LORIA, Nancy, 2011. [This is a reconstruction of the table in [6].]
- [36] Denis Roegel. A reconstruction of Chernac’s *Cribrum arithmeticum* (1811). Technical report, LORIA, Nancy, 2011. [This is a reconstruction of [9].]
- [37] Denis Roegel. A reconstruction of Dase’s table of factors (eighth million, 1863). Technical report, LORIA, Nancy, 2011. [This is a reconstruction of the table in [11].]
- [38] Denis Roegel. A reconstruction of Dase’s table of factors (ninth million, 1865). Technical report, LORIA, Nancy, 2011. [This is a reconstruction of the table in [12].]

- [39] Denis Roegel. A reconstruction of Dase’s table of factors (seventh million, 1862). Technical report, LORIA, Nancy, 2011. [This is a reconstruction of the table in [10].]
- [40] Denis Roegel. A reconstruction of Felkel’s tables of primes and factors (1776). Technical report, LORIA, 2011. [This is a reconstruction and an extension of Felkel’s tables [14, 15, 16, 17].]
- [41] Denis Roegel. A reconstruction of Glaisher’s table of factors (fifth million, 1880). Technical report, LORIA, Nancy, 2011. [This is a reconstruction of the table in [19].]
- [42] Denis Roegel. A reconstruction of Glaisher’s table of factors (fourth million, 1879). Technical report, LORIA, Nancy, 2011. [This is a reconstruction of the table in [18].]
- [43] Denis Roegel. A reconstruction of Glaisher’s table of factors (sixth million, 1883). Technical report, LORIA, Nancy, 2011. [This is a reconstruction of the table in [20].]
- [44] Denis Roegel. A reconstruction of Kulik’s “Magnus Canon Divisorum” (ca. 1825–1863): Introduction. Technical report, LORIA, Nancy, 2011. [This is a reconstruction of [25].]
- [45] Denis Roegel. A reconstruction of Kulik’s table of factors (1825). Technical report, LORIA, Nancy, 2011. [This is a reconstruction of [24].]
- [46] Denis Roegel. A reconstruction of Lehmer’s table of primes (1914). Technical report, LORIA, Nancy, 2011. [This is a reconstruction of [28].]
- [47] Paul Peter Heinrich Seelhoff. Geschichte der Factorentafeln. *Archiv der Mathematik und Physik*, 70:413–426, 1884.





## Auxiliary table



## Factor table





Lehmer's table of factors (1909) (reconstruction, D. Roegel, 2011)

Table with columns for numbers 1-209 and rows for factor sets. Each row represents a number and its prime factors. The table is organized into groups of 10 rows, labeled 00-41 on the left side.



Lehmer's table of factors (1909) (reconstruction, D. Roegel, 2011)

Table with columns for numbers and their prime factors, organized in groups of 10 rows. Each row contains a number and its prime factors in a specific order.

Lehmer's table of factors (1909) (reconstruction, D. Roegel, 2011)

Table with 5 columns (row index, column index 1-4) and 100 rows of numerical data representing Lehmer's table of factors.

Lehmer's table of factors (1909) (reconstruction, D. Roegel, 2011)

Table with columns for numbers 105 000 to 126 000 and rows for factors. Each cell contains a list of prime factors for that number.

Lehmer's table of factors (1909) (reconstruction, D. Roegel, 2011)

Table with columns labeled 01-26 and rows labeled 6-11, 13-17, 19-23, 25-29, 31-35, 37-41, 43-47, 49-53, 55-59, 61-65, 67-71, 73-77, 79-83, 85-89, 91-95, 101-105, 107-111, 113-117, 119-123, 125-129, 131-135, 137-141, 143-147, 149-153, 155-159, 163-167, 169-173, 175-179, 181-185, 187-191, 193-197, 199-203, 205-209. The table contains numerical data for each cell.

Lehmer's table of factors (1909) (reconstruction, D. Roegel, 2011)

Table with columns for numbers 01-99 and rows for factors 1-99. Each cell contains a digit representing a factor or zero. The table is a grid of 99x99 cells.



Lehmer's table of factors (1909) (reconstruction, D. Roegel, 2011)

Table with columns for numbers 168000-189000 and rows for factors. The table contains numerical data representing factorizations for each number in the range.

Lehmer's table of factors (1909) (reconstruction, D. Roegel, 2011)

Table with 20 columns (0-19) and 100 rows (01 890-99 193). Each cell contains a sequence of integers representing factors or values for a specific number range.

Lehmer's table of factors (1909) (reconstruction, D. Roegel, 2011)

Table with columns 1-100 and rows 02-30. Each cell contains a number representing a factor or value in Lehmer's table.

Lehmer's table of factors (1909) (reconstruction, D. Roegel, 2011)

Table with columns for numbers 11-109 and rows for factor sets (e.g., 02, 31, 32, 33, 34, 35, 36, 37, 38, 39, 40, 41, 42, 43, 44, 45, 46, 47, 48, 49, 50, 51). Each cell contains a list of prime factors for that number.

Lehmer's table of factors (1909) (reconstruction, D. Roegel, 2011)

Table with 100 columns (numbered 12 to 209) and 100 rows (numbered 02 to 99). Each cell contains a numerical value representing a factor or reconstruction data.

Lehmer's table of factors (1909) (reconstruction, D. Roegel, 2011)

Table with columns for numbers 13-29 and rows for factor ranges 02-99. Each cell contains a list of prime factors for that number.

Lehmer's table of factors (1909) (reconstruction, D. Roegel, 2011)

Table with columns for numbers 14-19, 23-31, 37-41, 43-47, 53-59, 61-67, 71-73, 79-83, 89-97, 101-103, 107-110, 113-121, 127-131, 137-139, 143-149, 151-157, 163-167, 169-173, 179-181, 187-191, 193-197, 199-209. Rows represent numbers from 02 94 to 99 433, with some rows containing multiple numbers (e.g., 03 00, 04 48, 05 53, 06 58, 07 62, 08 67, 09 72, 10 77, 11 81, 12 85, 13 89).

Lehmer's table of factors (1909) (reconstruction, D. Roegel, 2011)

Table with columns for numbers 15-309 and rows for factors 1-309. The table contains numerical data representing the Lehmer table of factors.



Lehmer's table of factors (1909) (reconstruction, D. Roegel, 2011)

Table with 42 columns and 1000 rows of numerical data representing factorizations of integers from 336000 to 357000.

Lehmer's table of factors (1909) (reconstruction, D. Roegel, 2011)

Table with columns for numbers (17-19, 21-23, 25-27, 29-31, 33-35, 37-39, 41-43, 45-47, 49-51, 53-55, 57-59, 61-63, 65-67, 69-71, 73-75, 77-79, 81-83, 85-87, 89-91, 93-95, 97-99) and rows for factor ranges (103-57, 58-9, 50-10, 60-15, 61-20, 62-24, 63-28, 64-32, 65-36, 66-40, 67-44, 68-48, 69-52, 70-56, 71-60, 72-64, 73-68, 74-72, 75-76, 76-80, 77-84, 78-88, 79-92, 80-96, 81-98, 82-99). Each cell contains a list of prime factors for that number.

Lehmer's table of factors (1909) (reconstruction, D. Roegel, 2011)

Table with columns for numbers 18-99 and rows for factors 03-98. Each cell contains a digit representing a factor or zero.

Lehmer's table of factors (1909) (reconstruction, D. Roegel, 2011)

Table with 20 columns (03-99) and 20 rows (19-99). Each cell contains a sequence of numbers representing factors. The table is a Lehmer's table of factors, showing the factorization of numbers in the range 399,000 to 420,000. The columns are labeled 03, 09, 19, 29, 31, 37, 41, 43, 47, 53, 59, 61, 67, 71, 73, 79, 83, 89, 97, 101, 103, 107, 109, 113, 121, 127, 131, 137, 139, 143, 149, 151, 157, 163, 167, 169, 173, 179, 181, 187, 191, 193, 197, 199, 209. The rows are labeled 03, 09, 19, 29, 31, 37, 41, 43, 47, 53, 59, 61, 67, 71, 73, 79, 83, 89, 97, 101, 103, 107, 109, 113, 121, 127, 131, 137, 139, 143, 149, 151, 157, 163, 167, 169, 173, 179, 181, 187, 191, 193, 197, 199, 209. Each cell contains a sequence of numbers representing factors, with some cells containing dashes to indicate no factor found.

Lehmer's table of factors (1909) (reconstruction, D. Roegel, 2011)

Table with 40 rows and 40 columns, containing numerical data for Lehmer's table of factors. The table is a grid of numbers, with some cells containing dashes. The rows are labeled 01 to 40 on the left, and the columns are labeled 01 to 40 at the top.

Lehmer's table of factors (1909) (reconstruction, D. Roegel, 2011)

Table with columns for numbers 04-61 and rows for factors 1-23. Each cell contains a digit representing a factor or zero.

Lehmer's table of factors (1909) (reconstruction, D. Roegel, 2011)

Table with 100 columns and 100 rows of numerical data representing Lehmer's table of factors. Each cell contains a number representing a factor or a specific value in the table.

Lehmer's table of factors (1909) (reconstruction, D. Roegel, 2011)

Table with 50 columns and 100 rows containing numerical data, including indices (e.g., 01 83, 84, 85) and factor values.



Lehmer's table of factors (1909) (reconstruction, D. Roegel, 2011)

Table with columns for factor ranges (e.g., 05 04, 06 05) and rows of numerical data representing factorizations. The table is organized into blocks of 10 rows each, with the first row of each block containing the range and the following rows containing the factorization data.



Lehmer's table of factors (1909) (reconstruction, D. Roegel, 2011)

Table with columns 06 to 99 and rows 26 to 99. Each cell contains a sequence of numbers representing factors, with some cells containing dashes to indicate missing or zero values.



Lehmer's table of factors (1909) (reconstruction, D. Roegel, 2011)

Table with columns for numbers and their prime factors, organized in groups of 10 rows. Each row contains a number followed by its prime factors in ascending order.

Lehmer's table of factors (1909) (reconstruction, D. Roegel, 2011)

Table with 20 columns (numbered 09 to 209) and 20 rows (numbered 06 to 99). Each cell contains a sequence of numbers representing factors or values for a specific range. The numbers are arranged in a grid format, with some cells containing multiple numbers separated by spaces.



Lehmer's table of factors (1909) (reconstruction, D. Roegel, 2011)

Table with 30 columns and 30 rows of numerical data, representing Lehmer's table of factors. Each cell contains a number or a dash, representing the factorization of integers in the range 651,000 to 672,000.



Lehmer's table of factors (1909) (reconstruction, D. Roegel, 2011)

Table with columns for numbers 672000 to 693000 and rows for factors. The table contains numerical data representing the factorization of each number in the range.

Lehmer's table of factors (1909) (reconstruction, D. Roegel, 2011)

Table with columns for numbers and their prime factors. The table is organized into rows, with some rows starting with a number in the first column (e.g., 06 93, 94, 95, etc.) and others starting with a number in the second column (e.g., 33, 34, 35, etc.).

Lehmer's table of factors (1909) (reconstruction, D. Roegel, 2011)

Table with 34 columns and 34 rows of numerical data, representing Lehmer's table of factors for the range 714 000 to 735 000. Each cell contains a small integer value.

Lehmer's table of factors (1909) (reconstruction, D. Roegel, 2011)

Table with columns 35-109 and rows 07-55. Each cell contains a sequence of numbers representing factors, with some cells containing dashes to indicate missing or zero values.

Lehmer's table of factors (1909) (reconstruction, D. Roegel, 2011)

Table with 36 columns and 100 rows of numerical data, representing Lehmer's table of factors for numbers 756,000 to 777,000.

Lehmer's table of factors (1909) (reconstruction, D. Roegel, 2011)

Table with columns for numbers 07-99 and rows for factors 37-109. Each cell contains a digit representing a factor or zero.

Lehmer's table of factors (1909) (reconstruction, D. Roegel, 2011)

Table with columns for factor ranges (e.g., 07 98, 08 00) and rows of numerical data representing factorizations. The table is organized into blocks of 20 rows each, with the first row of each block containing the range and the subsequent rows containing the factorization data.

Lehmer's table of factors (1909) (reconstruction, D. Roegel, 2011)

Table with columns for numbers 08-19, 20-29, 30-39, 40-49, 50-59, 60-69, 70-79, 80-89, 90-99 and rows of factor data.



Lehmer's table of factors (1909) (reconstruction, D. Roegel, 2011)

Table with columns for numbers 40-99 and rows for factors 1-209. Each cell contains a number representing a factor or zero.

Lehmer's table of factors (1909) (reconstruction, D. Roegel, 2011)

Table with 40 columns (factors 1-40) and 40 rows (numbers 08 61 to 81 96). Each cell contains a digit representing the factor's presence in the number's prime factorization.

Lehmer's table of factors (1909) (reconstruction, D. Roegel, 2011)

Table with 40 columns and 100 rows of numerical data. Each row represents a number and its prime factors. The first column contains the number, and the subsequent columns contain its prime factors in ascending order. For example, row 08 82 shows the number 82 and its factors 2, 41, 101, 11, 13, 17, 19, 23, 29, 31, 37, 41, 43, 47, 53, 59, 61, 67, 71, 73, 79, 83, 89, 97, 101, 103, 107, 109, 113, 121, 127, 131, 137, 139, 143, 149, 151, 157, 163, 167, 169, 173, 179, 181, 187, 191, 193, 197, 199, 209.



Lehmer's table of factors (1909) (reconstruction, D. Roegel, 2011)

Table with 100 rows and 100 columns of numerical data, representing Lehmer's table of factors. The table contains a grid of integers, with some cells containing multiple values separated by spaces. The rows are indexed from 09 to 99, and the columns from 04 to 99.

Lehmer's table of factors (1909) (reconstruction, D. Roegel, 2011)

Table with 45 columns and 45 rows of numerical data, representing Lehmer's table of factors for the range 945,000 to 966,000. Each cell contains a number representing a factor or its frequency.



Lehmer's table of factors (1909) (reconstruction, D. Roegel, 2011)

Table with 40 columns (numbered 07 to 99) and 40 rows (numbered 07 to 99). Each cell contains a sequence of numbers representing factors or values for a specific number in the range 987,000 to 1,008,000.



Lehmer's table of factors (1909) (reconstruction, D. Roegel, 2011)

Table with columns 48-108 and rows 108-209. Each cell contains a numerical value representing a factor or reconstruction data.



Lehmer's table of factors (1909) (reconstruction, D. Roegel, 2011)

Table with 100 columns (numbered 50 to 149) and 100 rows (numbered 10 to 99). Each cell contains a numerical value representing a factor or reconstruction data.

Lehmer's table of factors (1909) (reconstruction, D. Roegel, 2011)

Table with 100 columns (numbered 01 to 100) and 100 rows (numbered 70 to 99). Each cell contains a sequence of numbers representing factors or values for a specific number in the range 1071000-1092000.

Lehmer's table of factors (1909) (reconstruction, D. Roegel, 2011)

Table with 100 columns (numbered 02 to 99) and 100 rows (numbered 10 92 to 99). Each cell contains a sequence of numbers representing factors or values for a specific number in the range 1092000-1113000.

Lehmer's table of factors (1909) (reconstruction, D. Roegel, 2011)

Table with 40 columns and 99 rows of numerical data, representing Lehmer's table of factors for numbers 113000 to 1134000.



Lehmer's table of factors (1909) (reconstruction, D. Roegel, 2011)

Table with 100 columns (numbered 55 to 109) and 100 rows (numbered 11 55 to 75 99). Each cell contains integers representing factors or values in Lehmer's table.



Lehmer's table of factors (1909) (reconstruction, D. Roegel, 2011)

Table with columns for numbers 1176 to 99 and rows for factors 56 to 99. Each cell contains a list of prime factors for that number.

Lehmer's table of factors (1909) (reconstruction, D. Roegel, 2011)

Table with columns for numbers and their prime factors, organized in groups of 10 rows. Each row contains a number and its prime factors in a specific order.

Lehmer's table of factors (1909) (reconstruction, D. Roegel, 2011)

Table with columns for numbers 1218 to 2009 and rows for factors. The table contains numerical data representing the factorization of integers in the range 1218 to 2009.

Lehmer's table of factors (1909) (reconstruction, D. Roegel, 2011)

Table with columns for numbers 1239-99 and rows for factors 50-99. Each cell contains a list of prime factors for that number.

Lehmer's table of factors (1909) (reconstruction, D. Roegel, 2011)

Table with columns for numbers 126000-129999 and rows for factors. Each cell contains a list of prime factors for that number.

Lehmer's table of factors (1909) (reconstruction, D. Roegel, 2011)

Table with columns for numbers 1281 to 1302 and rows for factors. Each cell contains a list of prime factors for that number, separated by spaces. The table is organized into blocks of 10 rows, with the first row of each block containing the number being factored.

Lehmer's table of factors (1909) (reconstruction, D. Roegel, 2011)

Table with columns for numbers 1302000 to 1323000 and rows for factors. The table contains numerical data representing the factors of each number in the range.

Lehmer's table of factors (1909) (reconstruction, D. Roegel, 2011)

Table with columns for numbers 63 to 99 and rows for factors 03 to 99. Each cell contains a list of prime factors for that number.



Lehmer's table of factors (1909) (reconstruction, D. Roegel, 2011)

Table with columns 64-99 and rows 13-101. Each cell contains a sequence of integers representing factors, with some cells containing dashes to indicate missing or zero values.

Lehmer's table of factors (1909) (reconstruction, D. Roegel, 2011)

Table with columns 05 to 99 and rows 13 to 85. Each cell contains a sequence of numbers representing factors for a specific range of integers.



Lehmer's table of factors (1909) (reconstruction, D. Roegel, 2011)

Table with columns 07-209 and rows 14-27. Each row contains 202 numerical entries representing factorization data for Lehmer's table.

Lehmer's table of factors (1909) (reconstruction, D. Roegel, 2011)

Table with 40 columns (numbered 08 to 99) and 40 rows (numbered 14 to 48). Each cell contains a numerical value representing a factor or reconstruction data.

Lehmer's table of factors (1909) (reconstruction, D. Roegel, 2011)

Table with 100 columns (00-99) and 100 rows (00-99). Each cell contains a sequence of numbers representing factors. The table is a Lehmer's table of factors, showing the factorization of numbers in the range 1449000 to 1470000. The numbers are arranged in a grid, with each row and column representing a specific number in the range. The factors are listed in the cells, often with multiple values separated by spaces or commas. The table is a reconstruction of the original Lehmer's table, showing the factorization of numbers in the range 1449000 to 1470000.

Lehmer's table of factors (1909) (reconstruction, D. Roegel, 2011)

Table with columns for numbers and their prime factors. The table is organized into groups of 10 rows, labeled 70 through 99 on the left. Each row contains a sequence of numbers and their corresponding prime factors, with some numbers having multiple factors listed.

Lehmer's table of factors (1909) (reconstruction, D. Roegel, 2011)

Table with columns for numbers 149100-151200 and rows for factors. Each row contains a number and its prime factors. The table is a reconstruction of Lehmer's 1909 work on factoring numbers.



Lehmer's table of factors (1909) (reconstruction, D. Roegel, 2011)

Table with 100 columns and 100 rows of numerical data, representing Lehmer's table of factors. Each row contains a sequence of integers, with some cells containing dashes to indicate missing or zero values. The table is organized into a grid with row and column indices.

Lehmer's table of factors (1909) (reconstruction, D. Roegel, 2011)

Table with 40 columns (numbered 1-40) and 100 rows (numbered 15-53). Each cell contains a sequence of integers representing factors, with some cells containing dashes to indicate missing or zero values. The numbers are arranged in a grid-like pattern across the rows and columns.

Lehmer's table of factors (1909) (reconstruction, D. Roegel, 2011)

Table with 40 columns and 100 rows of numerical data, representing Lehmer's table of factors for numbers between 1,554,000 and 1,575,000.

Lehmer's table of factors (1909) (reconstruction, D. Roegel, 2011)

Table with columns 1-75 and rows 15-99. Each row contains 75 numerical values representing factors for a specific number in the range 1,575,000 to 1,596,000.

Lehmer's table of factors (1909) (reconstruction, D. Roegel, 2011)

Table with columns for numbers 1596-1617 and rows for factors. Each cell contains a list of prime factors for that number, separated by spaces. The table is organized into blocks of 10 rows, with the first row of each block containing the number being factored.

Lehmer's table of factors (1909) (reconstruction, D. Roegel, 2011)

Table with 40 columns (numbered 77-116) and 40 rows (numbered 16-37). Each cell contains a sequence of integers representing factors, with some cells containing dashes to indicate missing or zero values. The table is a Lehmer's table of factors for the range 1,617,000 to 1,638,000.

Lehmer's table of factors (1909) (reconstruction, D. Roegel, 2011)

Table with 40 columns (numbered 78 to 199) and 40 rows (numbered 1638 to 58). Each cell contains a sequence of integers representing factors or values for a specific number in the range 1638-1999.

Lehmer's table of factors (1909) (reconstruction, D. Roegel, 2011)

Table with columns for numbers 1659-1680 and rows for factors. Each row contains a list of prime factors for a specific number, with some numbers having multiple rows of factors.



Lehmer's table of factors (1909) (reconstruction, D. Roegel, 2011)

Table with columns for numbers 1700-2000 and rows for factors. Each cell contains a list of prime factors for that number, separated by spaces. The table is organized into groups of 10 rows, with the first column of each group indicating the starting number (e.g., 80, 81, 82, etc.).

Lehmer's table of factors (1909) (reconstruction, D. Roegel, 2011)

Table with columns for numbers and their prime factors, organized in groups of 10 rows. Each row contains a number and its prime factors in ascending order.

Lehmer's table of factors (1909) (reconstruction, D. Roegel, 2011)

Table with columns for numbers and their prime factors, organized in rows of 20 numbers each. The table covers the range from 1722000 to 1743000.



Lehmer's table of factors (1909) (reconstruction, D. Roegel, 2011)

Table with 40 columns (numbered 84 to 123) and 100 rows (numbered 64 to 84). Each cell contains a sequence of numbers representing factors or values for a specific row and column.

Lehmer's table of factors (1909) (reconstruction, D. Roegel, 2011)

Table with columns for numbers 85 to 99 and rows for factors 1 to 209. Each cell contains a number representing a factor or zero.

Lehmer's table of factors (1909) (reconstruction, D. Roegel, 2011)

Table with columns for numbers and their prime factors, organized in rows and columns. The table contains numerical data for the range 180600 to 209000.

Lehmer's table of factors (1909) (reconstruction, D. Roegel, 2011)

Table with columns for numbers and their prime factors. The table contains 100 rows of data, each representing a range of numbers and their corresponding prime factorizations.



Lehmer's table of factors (1909) (reconstruction, D. Roegel, 2011)

Table with columns for numbers 1848 to 8999 and rows for factors. The table contains numerical data representing the factors of each number in the range 1848-8999.

Lehmer's table of factors (1909) (reconstruction, D. Roegel, 2011)

Table with columns for numbers 1869-1899 and rows for factors 80-99. Each cell contains a list of prime factors for that number.

Lehmer's table of factors (1909) (reconstruction, D. Roegel, 2011)

Table with 100 rows and 100 columns of numerical data, representing Lehmer's table of factors for the range 1 890 000 to 1 911 000. Each row contains a sequence of numbers, with some cells containing multiple values separated by spaces.

Lehmer's table of factors (1909) (reconstruction, D. Roegel, 2011)

Table with 30 columns (01-30) and 30 rows (19-99). Each cell contains a sequence of numbers representing factors for a specific range of integers. The numbers are arranged in a grid-like pattern, with some cells containing multiple numbers separated by spaces or dashes.

Lehmer's table of factors (1909) (reconstruction, D. Roegel, 2011)

Table with columns 02 to 209 and rows 19-32 to 99-643. Each cell contains a sequence of numbers representing factors, with some cells containing dashes to indicate missing or zero values.

Lehmer's table of factors (1909) (reconstruction, D. Roegel, 2011)

Table with columns for numbers 1909-99 and rows for factors 03-99. Each cell contains a list of prime factors for that number.

Lehmer's table of factors (1909) (reconstruction, D. Roegel, 2011)

Table with 40 columns and 100 rows of numerical data, representing Lehmer's table of factors for the range 1,974,000 to 1,995,000.

Lehmer's table of factors (1909) (reconstruction, D. Roegel, 2011)

Table with columns for numbers 1905-2009 and rows for factors. The table contains numerical data representing the factors of integers in the range 1905 to 2009.



Lehmer's table of factors (1909) (reconstruction, D. Roegel, 2011)

Table with columns for numbers 20160 to 36999 and rows for factors. Each cell contains a list of prime factors for that number, separated by spaces. The table is organized into blocks of 10 rows, with the first row of each block containing the number being factored.

Lehmer's table of factors (1909) (reconstruction, D. Roegel, 2011)

Table with columns for numbers 20-37 and rows for factors 07-99. Each cell contains a list of prime factors for that number.

Lehmer's table of factors (1909) (reconstruction, D. Roegel, 2011)

Table with columns for numbers 20-99 and rows for factors 08-99. Each cell contains a list of prime factors for that number.

Lehmer's table of factors (1909) (reconstruction, D. Roegel, 2011)

Table with columns for numbers 2079-2100 and rows for factors. Each row contains a sequence of numbers representing factors for a specific integer. The table is organized into groups of 10 rows, with the first column of each group indicating the number being factored (e.g., 2079, 2080, etc.).

Lehmer's table of factors (1909) (reconstruction, D. Roegel, 2011)

Table with 100 rows and 100 columns of numerical data, representing Lehmer's table of factors for the range 2 100 000 to 2 121 000.

Lehmer's table of factors (1909) (reconstruction, D. Roegel, 2011)

Table with 40 columns and 40 rows of numerical data, representing Lehmer's table of factors. Each cell contains a sequence of integers, likely representing prime factors or their exponents for a specific range of numbers.

Lehmer's table of factors (1909) (reconstruction, D. Roegel, 2011)

Table with columns 1-100 and rows 21-62. Each cell contains a sequence of integers representing factors or values for a specific row and column.

Lehmer's table of factors (1909) (reconstruction, D. Roegel, 2011)

Table with columns for numbers 103 to 98 and rows for factors 1 to 37. The table contains numerical data representing the factors of integers in the range 2163000 to 2184000.



Lehmer's table of factors (1909) (reconstruction, D. Roegel, 2011)

Table with columns for numbers and their prime factors. The table is organized into rows, each representing a range of numbers. Each row contains a sequence of numbers and their corresponding prime factors, with some numbers having multiple factors listed. The table is a reconstruction of Lehmer's 1909 work on factoring numbers.

Lehmer's table of factors (1909) (reconstruction, D. Roegel, 2011)

Table with columns for numbers 2205 to 2299 and rows for factors. Each cell contains a number representing a factor or its frequency. The table is a grid of numbers, with some cells containing multiple numbers separated by spaces or commas.

Lehmer's table of factors (1909) (reconstruction, D. Roegel, 2011)

Table with 40 columns and 40 rows of numerical data, representing Lehmer's table of factors for the range 2 226 000 to 2 247 000. Each cell contains a number or a sequence of numbers, representing the factors of the corresponding integer in the table.

Lehmer's table of factors (1909) (reconstruction, D. Roegel, 2011)

Table with columns for numbers 107-110 and rows for factorizations of numbers from 247 to 268. Each row contains a list of prime factors and their exponents.

Lehmer's table of factors (1909) (reconstruction, D. Roegel, 2011)

Table with columns for numbers 1-100 and rows for factorizations of numbers from 268000 to 289000. Each row contains the prime factors of the corresponding number, separated by spaces.

Lehmer's table of factors (1909) (reconstruction, D. Roegel, 2011)

Table with columns for numbers and their prime factors. The table is organized into rows corresponding to the numbers 2289 to 9999. Each row contains the number followed by its prime factors in ascending order, separated by spaces. For example, the first row is '2289 0 11 641' and the last row is '99 11 13'.

Lehmer's table of factors (1909) (reconstruction, D. Roegel, 2011)

Table with 30 rows and 100 columns of numerical data, representing Lehmer's table of factors for the range 2 310 000 to 2 331 000.

Lehmer's table of factors (1909) (reconstruction, D. Roegel, 2011)

Table with columns for numbers and their prime factors, organized in groups of 10 rows. Each row contains a number and its prime factorization.



Lehmer's table of factors (1909) (reconstruction, D. Roegel, 2011)

Table with columns for numbers and their prime factors. The table is organized into rows, each representing a range of numbers. Each cell contains a list of prime factors for that number, separated by spaces. The numbers are arranged in ascending order within each row.

Lehmer's table of factors (1909) (reconstruction, D. Roegel, 2011)

Table with 23 columns (numbered 1-23) and 93 rows (numbered 73-93). Each cell contains a sequence of integers representing factors, with some cells containing dashes to indicate missing or zero values. The numbers range from 1 to 1000.

Lehmer's table of factors (1909) (reconstruction, D. Roegel, 2011)

Table with 100 columns and 100 rows of numerical data, representing Lehmer's table of factors for the range 2 394 000 to 2 415 000.

Lehmer's table of factors (1909) (reconstruction, D. Roegel, 2011)

Table with columns for numbers and their prime factors. The table is organized into rows, each representing a range of numbers. Each row contains a sequence of numbers and their corresponding prime factors, with some numbers having multiple factors listed. The table is a reconstruction of Lehmer's 1909 work on factoring numbers.

Lehmer's table of factors (1909) (reconstruction, D. Roegel, 2011)

Table with 30 columns and 56 rows of numerical data, representing Lehmer's table of factors. Each row contains a sequence of numbers, with some cells containing dashes to indicate missing or zero values. The rows are indexed from 24 to 56.

Lehmer's table of factors (1909) (reconstruction, D. Roegel, 2011)

Table with columns for numbers and their prime factors. The table is organized into rows, each representing a range of numbers. Each row contains a sequence of numbers and their corresponding prime factors, with some numbers having multiple factors listed.

Lehmer's table of factors (1909) (reconstruction, D. Roegel, 2011)

Table with 40 columns and 1000 rows of numerical data, representing Lehmer's table of factors for numbers between 2,478,000 and 2,499,000.

Lehmer's table of factors (1909) (reconstruction, D. Roegel, 2011)

Table with columns for numbers and their prime factors. The table is organized into rows corresponding to the numbers 2499, 2500, 01, 02, 03, 04, 05, 06, 07, 08, 09, 10, 11, 12, 13, 14, 15, 16, 17, 18, and 19. Each row contains a sequence of numbers and their prime factors, with some numbers appearing in multiple rows.



Lehmer's table of factors (1909) (reconstruction, D. Roegel, 2011)

Table with columns for numbers 120-121 and rows for factors 1-99. Each cell contains a number representing a factor or its multiplicity.

Lehmer's table of factors (1909) (reconstruction, D. Roegel, 2011)

Table with columns for numbers 121-209 and rows for factor sets (e.g., 25 41, 42, 43, 44, 45, 46, 47, 48, 49, 50, 51, 52, 53, 54, 55, 56, 57, 58, 59, 60, 61). Each row contains a list of prime factors for that number.

Lehmer's table of factors (1909) (reconstruction, D. Roegel, 2011)

Table with 100 rows and 100 columns of numerical data, representing Lehmer's table of factors. Each row contains a sequence of numbers, with some cells containing multiple values separated by spaces. The table is organized into a grid with row and column indices.

Lehmer's table of factors (1909) (reconstruction, D. Roegel, 2011)

Table with columns for numbers 123-2600 and rows for factors 1-100. The table contains numerical data representing the factorization of integers in the range 2583000 to 2604000.

Lehmer's table of factors (1909) (reconstruction, D. Roegel, 2011)

Table with columns for row numbers (e.g., 26 04, 05, 06) and multiple columns of numerical data representing factors and their counts.

Lehmer's table of factors (1909) (reconstruction, D. Roegel, 2011)

Table with columns for numbers and their prime factors, organized in rows and columns.

Lehmer's table of factors (1909) (reconstruction, D. Roegel, 2011)

Table with columns for numbers and their prime factors. The table is organized into rows, each representing a range of numbers. Each row contains a sequence of numbers and their corresponding prime factors, with some numbers having multiple factors listed. The table is a reconstruction of Lehmer's 1909 work on factoring numbers.

Lehmer's table of factors (1909) (reconstruction, D. Roegel, 2011)

Table with 30 columns and 1000 rows of numerical data, representing Lehmer's table of factors for the range 2,667,000 to 2,688,000.



Lehmer's table of factors (1909) (reconstruction, D. Roegel, 2011)

Table with 20 columns (numbered 1-20) and 20 rows (numbered 26-88). Each cell contains a sequence of numbers representing factors, with some cells containing dashes to indicate missing or zero values.

Lehmer's table of factors (1909) (reconstruction, D. Roegel, 2011)

Table with columns for numbers 129-299 and rows for factors 1-13. Each cell contains a number representing the factorization of the corresponding number in the top row.

Lehmer's table of factors (1909) (reconstruction, D. Roegel, 2011)

A large grid table containing numerical data for Lehmer's table of factors, organized in rows and columns with various numerical values.

Lehmer's table of factors (1909) (reconstruction, D. Roegel, 2011)

Table with 30 columns and 100 rows of numerical data, representing Lehmer's table of factors. Each row contains 30 integers, likely representing the prime factors of a sequence of numbers. The numbers are arranged in a grid format, with rows and columns corresponding to the data points.

Lehmer's table of factors (1909) (reconstruction, D. Roegel, 2011)

Table with columns for numbers and their prime factors. The table is organized into rows, each representing a range of numbers. Each row contains a sequence of numbers and their corresponding prime factors, with some numbers having multiple factors listed. The table is a reconstruction of Lehmer's 1909 work on factoring numbers.

Lehmer's table of factors (1909) (reconstruction, D. Roegel, 2011)

Table with columns for numbers and their prime factors, organized in rows and columns. The table contains numerical data representing the factorization of integers in the range 2,793,000 to 2,814,000.

Lehmer's table of factors (1909) (reconstruction, D. Roegel, 2011)

Table with 36 columns (numbered 134 to 169) and 36 rows (numbered 14 to 34). Each cell contains a numerical value representing a factor or product.

Lehmer's table of factors (1909) (reconstruction, D. Roegel, 2011)

Table with 30 columns and 30 rows of numerical data, representing Lehmer's table of factors. Each cell contains a sequence of integers, some with negative signs, representing factorizations of numbers in the range 2,835,000 to 2,856,000.



Lehmer's table of factors (1909) (reconstruction, D. Roegel, 2011)

Table with columns for numbers 136-99 and rows for factors 1-29. Each cell contains a small integer representing a factor or zero.

Lehmer's table of factors (1909) (reconstruction, D. Roegel, 2011)

Table with columns for numbers and their prime factors. The table contains 100 rows of data, each representing a range of numbers and their corresponding prime factorizations.

Lehmer's table of factors (1909) (reconstruction, D. Roegel, 2011)

Table with columns for numbers and their prime factors, organized in rows and columns. The table contains numerical data for the range 2 988 000 to 2 919 000.

Lehmer's table of factors (1909) (reconstruction, D. Roegel, 2011)

Table with columns for numbers and their prime factors. The table is organized into rows, each representing a range of numbers. Each row contains a sequence of numbers and their corresponding prime factors, with some numbers having multiple factors listed.

Lehmer's table of factors (1909) (reconstruction, D. Roegel, 2011)

Table with columns for numbers 1400-1499 and their prime factors. Each row represents a number and its decomposition into prime factors.

Lehmer's table of factors (1909) (reconstruction, D. Roegel, 2011)

Table with columns for numbers 141-209 and rows for factors 1-209. The table contains numerical data representing the factorization of integers in the range 2961000 to 2982000.

Lehmer's table of factors (1909) (reconstruction, D. Roegel, 2011)

Table with columns for numbers and their prime factors, organized in rows and columns. The table contains numerical data for the range 2 982 000 to 3 003 000.

Lehmer's table of factors (1909) (reconstruction, D. Roegel, 2011)

Table with 100 columns (numbered 03 to 209) and 100 rows (numbered 03 to 209). Each cell contains a numerical value representing a factor or reconstruction data.



Lehmer's table of factors (1909) (reconstruction, D. Roegel, 2011)

Table with columns for numbers 1441-3049 and rows for factors. The table contains numerical data representing the factorization of integers in the range 3024000 to 3045000.

Lehmer's table of factors (1909) (reconstruction, D. Roegel, 2011)

Table with 37 columns and 65 rows of numerical data, representing Lehmer's table of factors for the range 3 045 000 to 3 066 000. Each row contains a sequence of integers representing the prime factors of the corresponding numbers in the range.

Lehmer's table of factors (1909) (reconstruction, D. Roegel, 2011)

Table with columns for numbers and their prime factors. The table is organized into rows, each representing a range of numbers. Each row contains a sequence of numbers and their corresponding prime factors, with some numbers having multiple factors listed.

Lehmer's table of factors (1909) (reconstruction, D. Roegel, 2011)

Table with columns for numbers 147-209 and rows for factor sets. Each row contains a list of prime factors for a specific number, with some numbers having multiple rows of factors.

Lehmer's table of factors (1909) (reconstruction, D. Roegel, 2011)

Table with 100 columns and 100 rows of numerical data, representing Lehmer's table of factors for numbers 310800 to 3129000.

Lehmer's table of factors (1909) (reconstruction, D. Roegel, 2011)

Table with columns for numbers 149-209 and rows for each number, containing factorization data. Each row represents a number and its prime factors.

Lehmer's table of factors (1909) (reconstruction, D. Roegel, 2011)

Table with columns for numbers 150-159 and rows for factors 1-99. Each cell contains a digit representing a factor or zero. The table is a grid of 90 rows and 10 columns of numbers.

Lehmer's table of factors (1909) (reconstruction, D. Roegel, 2011)

Table with columns for numbers 171-192 and rows for factors 1-100. Each cell contains a small integer representing the factorization of the number in that row and column.



Lehmer's table of factors (1909) (reconstruction, D. Roegel, 2011)

Table with 20 columns and 1000 rows of numerical data, representing Lehmer's table of factors for the range 3 192 000 to 3 213 000.

Lehmer's table of factors (1909) (reconstruction, D. Roegel, 2011)

Table with 33 rows and 209 columns, containing numerical data for Lehmer's table of factors. The table is organized into groups of rows, with the first column indicating the group number (e.g., 12, 14, 15, 16, 17, 18, 19, 20, 21, 22, 23, 24, 25, 26, 27, 28, 29, 30, 31, 32, 33) and the remaining columns containing the factorization data for each number in that group.

Lehmer's table of factors (1909) (reconstruction, D. Roegel, 2011)

Table with columns for numbers 154-209 and rows for factor sets. Each row contains a list of prime factors for a specific number, with some numbers having multiple rows of factors.

Lehmer's table of factors (1909) (reconstruction, D. Roegel, 2011)

Table with columns for numbers and their prime factors. The table is organized into rows, each representing a range of numbers. Each cell contains a list of prime factors for that number, separated by spaces. The numbers are arranged in ascending order within each row.

Lehmer's table of factors (1909) (reconstruction, D. Roegel, 2011)

Table with columns representing numbers from 156 to 99 and rows representing factors. The table contains numerical data organized in a grid format.

Lehmer's table of factors (1909) (reconstruction, D. Roegel, 2011)

Table with columns for numbers and their prime factors, organized in rows and columns. The table contains numerical data for the range 3 297 000 to 3 318 000.

Lehmer's table of factors (1909) (reconstruction, D. Roegel, 2011)

Table with columns for numbers 3318-3399 and rows for factors 1-209. Each cell contains a factor or a dash indicating no factor.

Lehmer's table of factors (1909) (reconstruction, D. Roegel, 2011)

Table with columns for numbers and their prime factors. The table is organized into rows, each representing a range of numbers. Each row contains a sequence of numbers and their corresponding prime factors, with some numbers having multiple factors listed.



Lehmer's table of factors (1909) (reconstruction, D. Roegel, 2011)

Table with columns for numbers and their prime factors, organized in groups of 10 rows. Each row contains a number followed by its prime factors in ascending order.

Lehmer's table of factors (1909) (reconstruction, D. Roegel, 2011)

Table with columns for numbers 3381001 to 3402000 and rows for factors. The table contains numerical data representing the prime factors of each number in the range.

Lehmer's table of factors (1909) (reconstruction, D. Roegel, 2011)

Table with columns for factor ranges (e.g., 162-171, 172-181, etc.) and rows for numbers (e.g., 34 02, 03, 04, etc.). Each cell contains a list of prime factors for that number.

Lehmer's table of factors (1909) (reconstruction, D. Roegel, 2011)

Table with columns for numbers and their prime factors, organized in rows of 20 numbers each. The table covers the range from 3423 to 3444.

Lehmer's table of factors (1909) (reconstruction, D. Roegel, 2011)

Table with 100 rows and 100 columns of numerical data, representing Lehmer's table of factors for numbers between 3,444,000 and 3,465,000.

Lehmer's table of factors (1909) (reconstruction, D. Roegel, 2011)

Table with columns for numbers and their prime factors, organized in rows and columns. The table contains numerical data for the range 3 465 000 to 3 486 000.

Lehmer's table of factors (1909) (reconstruction, D. Roegel, 2011)

Table with columns for numbers and their prime factors. The table is organized into rows, with some rows starting with a number in the first column (e.g., 34, 87, 88, 89, 90, 91, 92, 93, 94, 95, 96, 97, 98, 99, 35, 01, 02, 03, 04, 05, 06). Each row contains a sequence of numbers and their corresponding prime factors, separated by vertical bars.

Lehmer's table of factors (1909) (reconstruction, D. Roegel, 2011)

Table with columns for numbers and their factors, organized in rows and columns. The table contains numerical data representing factorizations for numbers in the range 3,507,000 to 3,528,000.



Lehmer's table of factors (1909) (reconstruction, D. Roegel, 2011)

Table with columns for numbers and their prime factors, organized in groups of 10 rows. Each row contains a number followed by its prime factors in ascending order.

Lehmer's table of factors (1909) (reconstruction, D. Roegel, 2011)

Table with columns for numbers 3549-3570 and rows for factors. Each cell contains a number or a dash, representing the factorization of the number in the column. The table is organized into groups of 10 columns and 10 rows.

Lehmer's table of factors (1909) (reconstruction, D. Roegel, 2011)

Table with columns for numbers and their prime factors. The table is organized into rows, each representing a range of numbers. Each row contains a sequence of numbers and their corresponding prime factors, with some numbers having multiple factors listed.

Lehmer's table of factors (1909) (reconstruction, D. Roegel, 2011)

Table with 40 columns and 100 rows of numerical data, representing Lehmer's table of factors for the range 3 591 000 to 3 612 000.

Lehmer's table of factors (1909) (reconstruction, D. Roegel, 2011)

Table with columns for numbers and their prime factors, organized in rows of 10 numbers each. The table covers the range from 172 to 99311.

Lehmer's table of factors (1909) (reconstruction, D. Roegel, 2011)

Table with columns for numbers and their prime factors. The table is organized into rows, with the first column indicating the number and subsequent columns listing its prime factors. The numbers range from 173 to 99, and the factors are listed in ascending order.

Lehmer's table of factors (1909) (reconstruction, D. Roegel, 2011)

Table with columns for numbers and their prime factors, organized in rows of 10 numbers each. The table covers the range from 174 to 99,1063.

Lehmer's table of factors (1909) (reconstruction, D. Roegel, 2011)

Table with columns for numbers and their prime factors, organized in rows and columns. The table contains numerical data for the range 3 675 000 to 3 696 000.



Lehmer's table of factors (1909) (reconstruction, D. Roegel, 2011)

Table with columns for numbers and their prime factors. The table is organized into rows, with some rows starting with a number in the first column (e.g., 97, 98, 99, 37, 00, 01, 02, 03, 04, 05, 06, 07, 08, 09, 10, 11, 12, 13, 14, 15, 16). Each row contains a sequence of numbers and their corresponding prime factors.

Lehmer's table of factors (1909) (reconstruction, D. Roegel, 2011)

Table with columns for numbers and their prime factors, organized in rows of 10 numbers each. The table covers the range from 177 to 3799.

Lehmer's table of factors (1909) (reconstruction, D. Roegel, 2011)

Table with columns for numbers 178-99 and rows for factors 1-209. The table contains numerical data representing the factorization of integers in the range 3,738,000 to 3,759,000.

Lehmer's table of factors (1909) (reconstruction, D. Roegel, 2011)

Table with columns for numbers and their prime factors. The table is organized into rows, each representing a range of numbers. Each row contains a sequence of numbers and their corresponding prime factors, with some numbers having multiple factors listed.

Lehmer's table of factors (1909) (reconstruction, D. Roegel, 2011)

Table with columns for numbers and their prime factors. The table is organized into rows, with the first column indicating the number and subsequent columns listing its prime factors. The numbers range from 180 to 3800.

Lehmer's table of factors (1909) (reconstruction, D. Roegel, 2011)

Table with 40 columns (numbered 1-40) and 100 rows (numbered 1-100). Each row contains numerical data representing factorizations for a specific range of numbers. The table is a reconstruction of Lehmer's 1909 work.

Lehmer's table of factors (1909) (reconstruction, D. Roegel, 2011)

Table with columns for numbers and their prime factors. The table is organized into rows corresponding to the numbers 3822 through 9931. Each row contains the number followed by its prime factors in ascending order, separated by spaces. For example, row 3822: 3822 2 3 7 11 13 17 19 23 29 31 37 41 43 47 53 59 61 67 71 73 79 83 89 97 101 103 107 109 113 121 127 131 137 139 143 149 151 157 163 167 169 173 179 181 187 191 193 197 199 203. The table ends with row 9931: 9931 31 37 41 43 47 53 59 61 67 71 73 79 83 89 97 101 103 107 109 113 121 127 131 137 139 143 149 151 157 163 167 169 173 179 181 187 191 193 197 199 203.

Lehmer's table of factors (1909) (reconstruction, D. Roegel, 2011)

Table with columns for numbers and their prime factors, organized in rows and columns. The table contains numerical data for the range 3 843 000 to 3 864 000.



Lehmer's table of factors (1909) (reconstruction, D. Roegel, 2011)

Table with columns for numbers and their prime factors, organized in rows and columns. The table contains numerical data for the range 3 864 000 to 3 885 000.

Lehmer's table of factors (1909) (reconstruction, D. Roegel, 2011)

Table with columns for numbers (185-3000) and their prime factors. The table is organized into rows of 16 numbers each, with the first column indicating the number and the subsequent columns listing its prime factors. The numbers are arranged in ascending order, and the factors are listed in increasing order of size.



Lehmer's table of factors (1909) (reconstruction, D. Roegel, 2011)

Table with columns for numbers and their prime factors. The table is organized into rows, each representing a range of numbers. Each row contains a sequence of numbers and their corresponding prime factors, with some numbers having multiple factors listed.

Lehmer's table of factors (1909) (reconstruction, D. Roegel, 2011)

Table with 40 rows and 40 columns of numerical data, representing Lehmer's table of factors for numbers 3,948,000 to 3,969,000. Each row contains 40 integers, with some cells containing dashes to indicate missing or zero values.

Lehmer's table of factors (1909) (reconstruction, D. Roegel, 2011)

Table with 30 columns (numbered 1-30) and 30 rows (numbered 69-99). Each cell contains a sequence of integers representing factors, with some cells containing dashes to indicate missing or zero values.

Lehmer's table of factors (1909) (reconstruction, D. Roegel, 2011)

Table with columns for numbers 190-999 and rows for factors. Each cell contains a number or a dash, representing the factorization of the number in the column. The table is organized into groups of 10 columns, with the first column of each group containing the number being factored.

Lehmer's table of factors (1909) (reconstruction, D. Roegel, 2011)

Table with 40 rows and 100 columns, containing numerical data for Lehmer's table of factors. The table is organized into groups of 10 rows each, labeled 10 through 39 on the left side. Each row contains 100 numerical values, representing factors of numbers in the range 4 011 000 to 4 032 000.



Lehmer's table of factors (1909) (reconstruction, D. Roegel, 2011)

40	32	192	1	11	13	17	19	23	29	31	37	41	43	47	53	59	61	67	71	73	79	83	89	97	101	103	107	109	113	121	127	131	137	139	143	149	151	157	167	169	173	179	181	187	191	193	197	199	201	
		0	37	1471	1777	11	71	797	--	--	419	13	17	19	263	--	--	1977	11	149	--	--	587	29	97	101	103	107	109	113	121	127	131	137	139	143	149	151	157	167	169	173	179	181	187	191	193	197	199	201
		1	--	--	13	41	367	733	43	1031	17	139	643	--	31	--	47	1483	11	61	277	53	--	--	131	19	--	353	89	409	23	--	--	117	13	1039	--	--	461	1297	127	13	17	19	11	79	--	--	449	
		2	29	13	--	--	1801	--	--	31	17	11	229	--	283	41	11	1949	347	--	--	181	19	13	--	23	11	61	67	--	503	317	278	971	1873	--	--	1259	43	13	11	37	--	--	383	11	13	19	--	443
		3	113	1381	--	--	883	60	29	--	109	11	229	--	109	11	13	31	479	--	--	79	41	--	19	311	73	11	31	73	11	661	--	13	--	149	--	--	853	13	23	863	173	11	--	251	11	53	29	101
		4	43	--	11	89	17	--	137	71	--	19	83	17	13	--	--	--	--	47	107	11	29	--	--	47	107	11	29	--	--	--	--	--	--	--	--	19	13	11	--	43	1240	23	73	283	37	--	170	
		5	11	521	17	599	31	11	--	--	439	17	811	109	19	--	--	193	397	41	13	11	--	107	--	--	13	97	103	73	59	--	887	31	17	--	--	--	89	167	83	181	--	--	53	11	37	--		
		6	--	--	11	947	587	827	--	--	13	29	17	17	23	--	251	--	109	--	37	19	--	23	43	151	139	13	17	383	11	1759	89	277	47	11	--	59	--	1091	907	1109	71	23	11	--	19	41	53	11
		7	13	37	--	23	--	47	--	709	193	--	11	1439	13	19	199	--	389	1723	13	337	--	--	17	--	11	103	--	--	11	17	--	--	--	41	13	--	--	101	29	19	--	--	79	151	11	1097	13	
		8	19	137	1831	29	73	37	17	11	23	--	71	31	11	659	601	--	61	31	--	17	1097	11	--	79	1747	47	--	157	577	17	--	79	1747	47	--	853	13	223	--	--	193	13	41	19	457	147	59	
		9	--	23	--	73	11	13	139	--	11	--	71	--	41	277	--	--	47	197	1669	--	--	29	13	23	11	31	67	--	13	--	--	--	977	23	11	--	73	47	--	11	--	239	17	163	--	19		
		33	5	11	521	17	599	31	11	--	13	--	--	439	17	811	109	19	--	193	31	11	--	107	--	--	13	97	103	73	59	--	887	31	17	--	--	--	89	167	83	181	--	--	53	11	37	--		
		6	--	--	11	947	587	827	--	--	13	29	17	17	23	--	251	--	109	--	37	19	--	23	43	151	139	13	17	383	11	1759	89	277	47	11	--	59	--	1091	907	1109	71	23	11	--	19	41	53	11
		7	13	37	--	23	--	47	--	709	193	--	11	1439	13	19	199	--	389	1723	13	337	--	--	17	--	11	103	--	--	11	17	--	--	--	41	13	--	--	101	29	19	--	--	79	151	11	1097	13	
		8	19	137	1831	29	73	37	17	11	23	--	71	31	11	659	601	--	61	31	--	17	1097	11	--	79	1747	47	--	157	577	17	--	79	1747	47	--	853	13	223	--	--	193	13	41	19	457	147	59	
		9	--	23	--	73	11	13	139	--	11	--	71	--	41	277	--	--	47	197	1669	--	--	29	13	23	11	31	67	--	13	--	--	--	977	23	11	--	73	47	--	11	--	239	17	163	--	19		
		34	10	--	191	41	17	463	31	11	23	19	--	--	13	613	1201	29	--	1933	11	59	--	--	19	37	1487	541	11	59	--	--	--	--	13	313	1093	151	23	--	--	13	313	1093	151	23	--	--	1823	31
		11	--	17	251	11	13	--	47	--	1153	557	--	--	61	197	37	11	271	13	--	17	11	--	13	--	53	109	1693	17	367	11	19	1163	--	23	11	401	--	149	--	19	809	--	17	--	11	29	53	
		12	97	211	173	13	67	--	--	419	31	43	13	29	--	241	1867	11	17	--	311	79	479	--	--	17	--	--	13	43	--	11	--	127	19	181	1223	23	41	--	19	11	397	83	71	13	17			
		13	53	29	31	--	691	139	--	--	1433	1061	11	89	--	13	359	--	47	37	43	--	--	43	23	239	--	--	17	11	53	179	569	41	29	233	23	--	83	--	19	11	47	97	--	127	11	13	31	
		14	67	59	13	--	23	887	--	--	1153	1061	11	89	--	17	67	19	--	47	37	43	--	--	43	23	239	--	--	19	11	53	179	569	41	29	233	23	--	83	--	19	11	47	97	--	127	11	13	
		35	15	197	13	11	947	823	151	41	1979	13	--	131	179	--	67	61	--	73	--	11	743	13	1373	11	101	37	--	29	--	--	19	37	1487	541	11	59	--	13	313	1093	151	23	--	--	13	313	1093	
		16	11	157	23	83	29	11	419	19	--	--	--	1327	499	23	13	11	--	--	17	11	--	--	271	599	19	--	13	--	31	97	--	13	1049	313	17	--	--	89	491	--	59	--	13	29	23	11	71	
		17	173	11	761	139	41	43	--	--	29	17	--	--	13	223	--	--	103	23	--	59	229	41	31	--	43	1447	11	31	--	37	13	83	11	107	1117	29	13	--	--	17	--	11	--	457	487	11		
		18	--	53	233	31	--	--	11	13	--	19	11	23	--	--	19	17	71	31	--	13	359	--	47	37	43	--	1103	1511	89	--	--	11	29	--	11	41	17	19	--	1033	43	61	--	941	17	29	13	23
		19	34	523	59	--	59	13	11	23	19	--	19	11	23	--	19	11	43	17	--	89	23	97	151	13	--	643	--	1601	421	307	29	--	13	29	47	11	17	--	43	31	31	--	433	461	17	--		
		36	20	13	1063	--	--	11	167	--	31	359	11	73	23	13	103	97	179	--	13	--	--	19	11	61	67	47	53	17	13	709	23	991	--	11	13	--	37	163	11	19	151	--	--	571	13			
		21	499	71	29	53	17	--	11	37	971	--	43	--	17	311	239	23	29	11	--	--	19	619	631	491	13	--	23	17	--	31	--	11	61	149	1201	--	41	--	557	229	37	13	29	--	31	19	173	
		22	--	733	17	11	53	13	--	347	--	23	37	17	103	1489	11	--	--	113	11	--	--	13	--	31	379	--	227	11	1367	--	19	--	11	29	--	47	263	31	1889	13	--	1499	37	11	67	41		
		23	877	--	181	71	97	997	433	--	401	17	19	13	43	--	23	463	11	13	--	31	61	--	--	23	17	--	67	53	--	11	43	17	79	13	19	--	--	29	1009	11	--	163	--	131	23			
		37	24	17	1439	967	13	19	--	--	237	397	11	19	37	11	109	37	11	109	37	11	--	109	37	11	109	37	11	109	37	11	109	37	11	109	37	11	109	37	11	109	37	11	109	37	11	109	37	11
		25	109	353	--	13	577	19	--	151	19	13	11	--	--	14747																																		

Lehmer's table of factors (1909) (reconstruction, D. Roegel, 2011)

Table with columns for numbers 193-99 and rows for factors 1-209. Each cell contains a digit representing a factor or zero.

Lehmer's table of factors (1909) (reconstruction, D. Roegel, 2011)

Table with columns for numbers 190-999 and rows for factors 1-99. Each cell contains a digit representing the presence of a factor for a given number.

Lehmer's table of factors (1909) (reconstruction, D. Roegel, 2011)

Table with columns for numbers and their prime factors, organized in rows and columns. The table contains numerical data for the range 4095000 to 4116000.

Lehmer's table of factors (1909) (reconstruction, D. Roegel, 2011)

Table with columns for numbers 1909-2009 and rows for factors. The table contains numerical data representing factorizations for each integer in the range.



Lehmer's table of factors (1909) (reconstruction, D. Roegel, 2011)

Table with columns for numbers 1908-1909 and rows for factors 1-209. The table contains numerical data representing the factorization of integers in the range 4158000 to 4179000.

Lehmer's table of factors (1909) (reconstruction, D. Roegel, 2011)

Table with 40 columns and 40 rows of numerical data, representing Lehmer's table of factors for the range 4 179 000 to 4 200 000. Each cell contains a small integer value.



Lehmer's table of factors (1909) (reconstruction, D. Roegel, 2011)

Table with columns for factor ranges (e.g., 200-210, 210-220) and rows for numbers (e.g., 200, 201, 202). Each cell contains a list of prime factors for that number.



Lehmer's table of factors (1909) (reconstruction, D. Roegel, 2011)

Table with columns for numbers 202-209 and rows for factors 1-100. Each cell contains a digit representing a factor's presence in the number's prime factorization.

Lehmer's table of factors (1909) (reconstruction, D. Roegel, 2011)

Table with columns for numbers 42300-42800 and rows for factors. Each cell contains a number or a dash, representing the factorization of the number in that row and column.

Lehmer's table of factors (1909) (reconstruction, D. Roegel, 2011)

Table with columns for numbers and their prime factors, organized in rows and columns. The table contains numerical data for the range 4284 to 4309.

Lehmer's table of factors (1909) (reconstruction, D. Roegel, 2011)

Table with columns for numbers 43-25 and rows for factors 01-99. Each cell contains a list of prime factors for that number.

Lehmer's table of factors (1909) (reconstruction, D. Roegel, 2011)

Table with columns for numbers and their prime factors, organized in rows and columns. The table contains numerical data for the range 4 326 000 to 4 347 000.





Lehmer's table of factors (1909) (reconstruction, D. Roegel, 2011)

Table with columns for numbers and their prime factors, organized in rows and columns. The table contains numerical data for the range 4368000 to 4389000.

Lehmer's table of factors (1909) (reconstruction, D. Roegel, 2011)

Table with columns for numbers and their prime factors, organized in rows of 20 columns each. The table contains data for numbers from 43,889 to 99,107.

Lehmer's table of factors (1909) (reconstruction, D. Roegel, 2011)

Table with columns 210-200 and rows 44-30. Each row contains a list of integers representing factors, with some cells containing dashes to indicate missing or zero values.

Lehmer's table of factors (1909) (reconstruction, D. Roegel, 2011)

Table with 44 rows and 211 columns, containing numerical data for Lehmer's table of factors. The table is organized into groups of 5 rows each, labeled 32 through 51 on the left side. Each row contains 211 numerical entries representing factors.

Lehmer's table of factors (1909) (reconstruction, D. Roegel, 2011)

Table with columns for numbers (212-209) and rows for factors (1-99). Each cell contains a number representing a factor or its frequency.

Lehmer's table of factors (1909) (reconstruction, D. Roegel, 2011)

Table with 20 columns and 1000 rows of numerical data, representing Lehmer's table of factors. The table contains a grid of integers, with some cells containing dashes to indicate missing or zero values. The rows are indexed from 44 to 99, and the columns from 213 to 400.

Lehmer's table of factors (1909) (reconstruction, D. Roegel, 2011)

Table with columns numbered 214 to 209 and rows numbered 44 to 99. Each cell contains a sequence of numbers representing factors in Lehmer's table.

Lehmer's table of factors (1909) (reconstruction, D. Roegel, 2011)

Table with 30 columns and 30 rows of numerical data, representing Lehmer's table of factors. Each cell contains a sequence of numbers, likely representing prime factors or their exponents for a specific range of integers.



Lehmer's table of factors (1909) (reconstruction, D. Roegel, 2011)

Table with columns for numbers and their prime factors, organized in rows and columns. The table contains numerical data for the range 4536000 to 4557000.

Lehmer's table of factors (1909) (reconstruction, D. Roegel, 2011)

Table with columns for numbers and their prime factors, organized in rows and columns. The table contains numerical data for the range 4,557,000 to 4,578,000.

Lehmer's table of factors (1909) (reconstruction, D. Roegel, 2011)

Table with columns for numbers and their prime factors. The table is organized into rows, each representing a range of numbers. Each row contains a sequence of numbers and their corresponding prime factors, with some numbers having multiple factors listed. The table is a reconstruction of Lehmer's 1909 work on factoring numbers.

Lehmer's table of factors (1909) (reconstruction, D. Roegel, 2011)

Table with columns for numbers and their prime factors, organized in groups of 10 rows. Each row contains a number and its prime factors in a specific order.

Lehmer's table of factors (1909) (reconstruction, D. Roegel, 2011)

Table with columns for numbers 46-40 and rows for factors 1-100. Each cell contains a small table of numbers representing factors and their multiplicities.

Lehmer's table of factors (1909) (reconstruction, D. Roegel, 2011)

Table with 100 columns and 100 rows of numerical data, representing Lehmer's table of factors. Each row contains a sequence of numbers, likely representing prime factors or related values for a specific range of integers.

Lehmer's table of factors (1909) (reconstruction, D. Roegel, 2011)

Table with columns for numbers and their prime factors, organized in rows and columns. The table contains numerical data for the range 4662000 to 4683000.

Lehmer's table of factors (1909) (reconstruction, D. Roegel, 2011)

Table with columns for numbers and their prime factors, organized in groups of 10 rows. Each row contains a number and its prime factors in a specific order.



Lehmer's table of factors (1909) (reconstruction, D. Roegel, 2011)

A large table with columns representing numbers from 224 to 99 and rows representing various numerical data points. Each row contains a sequence of numbers, some with signs, representing the Lehmer table of factors.

Lehmer's table of factors (1909) (reconstruction, D. Roegel, 2011)

Table with columns for numbers and their prime factors, organized in rows and columns. The table contains numerical data for the range 4,725,000 to 4,746,000.

Lehmer's table of factors (1909) (reconstruction, D. Roegel, 2011)

Table with 100 rows and 100 columns of numerical data, representing Lehmer's table of factors for numbers 4746000 to 4767000.

Lehmer's table of factors (1909) (reconstruction, D. Roegel, 2011)

Table with columns for numbers and their prime factors, organized in rows and columns. The table contains numerical data for the range 4767000 to 4788000.

Lehmer's table of factors (1909) (reconstruction, D. Roegel, 2011)

Table with columns for numbers and their prime factors, organized in rows and columns. The table contains numerical data for the range 4788000 to 4809000.

Lehmer's table of factors (1909) (reconstruction, D. Roegel, 2011)

Table with 48 rows and 209 columns, containing numerical data for Lehmer's table of factors. The table is organized into groups of 10 rows each, labeled 48-09, 10, 11, 12, 13, 14, 15, 16, 17, 18, 19, 20, 21, 22, 23, 24, 25, 26, 27, 28, 29. Each row contains 209 numerical values representing factors.

Lehmer's table of factors (1909) (reconstruction, D. Roegel, 2011)

Table with columns for numbers and their prime factors, organized in rows and columns. The table contains numerical data for the range 4830 to 9911.

Lehmer's table of factors (1909) (reconstruction, D. Roegel, 2011)

Table with columns for numbers and their prime factors, organized in rows and columns. The table contains numerical data for the range 4851 to 9923.



Lehmer's table of factors (1909) (reconstruction, D. Roegel, 2011)

Table with columns for numbers and their prime factors, organized in rows and columns. The table contains numerical data for the range 4872 to 4899.

Lehmer's table of factors (1909) (reconstruction, D. Roegel, 2011)

Table with columns for numbers 233 to 99 and rows for factors 1 to 209. The table contains numerical data representing factorizations for each number in the range.

Lehmer's table of factors (1909) (reconstruction, D. Roegel, 2011)

Table with 40 rows and 200 columns containing numerical data for Lehmer's table of factors. The table lists numbers from 4914 to 4939 and their prime factors.

Lehmer's table of factors (1909) (reconstruction, D. Roegel, 2011)

Table with columns for numbers and their prime factors, organized in rows and columns.

Lehmer's table of factors (1909) (reconstruction, D. Roegel, 2011)

Table with columns for numbers and their prime factors, organized in rows of 20 numbers each. The table contains a dense grid of numerical data representing the factorization of integers from 4,956,000 to 4,977,000.

Lehmer's table of factors (1909) (reconstruction, D. Roegel, 2011)

Table with columns for numbers and their prime factors. The table is organized into rows, with each row representing a range of numbers. The columns contain the numbers and their corresponding prime factors, often with exponents. The table is a reconstruction of Lehmer's 1909 work on factoring numbers.

Lehmer's table of factors (1909) (reconstruction, D. Roegel, 2011)

Table with columns for numbers and their prime factors. The table is organized into rows, with the first column indicating the number and subsequent columns listing its prime factors. The numbers range from 238 to 999, and the factors are listed in ascending order.

Lehmer's table of factors (1909) (reconstruction, D. Roegel, 2011)

Table with columns for numbers 239-999 and rows for factors 1-23. The table contains numerical data representing factorizations for each number in the range.



Lehmer's table of factors (1909) (reconstruction, D. Roegel, 2011)

Table with 20 columns and 60 rows of numerical data, representing Lehmer's table of factors for the range 5,040,000 to 5,061,000.

Lehmer's table of factors (1909) (reconstruction, D. Roegel, 2011)

Table with columns for numbers and their prime factors, organized in rows and columns. The table contains numerical data for the range 5061 to 5082.

Lehmer's table of factors (1909) (reconstruction, D. Roegel, 2011)

Table with columns for numbers 242 to 99 and rows for factors 1 to 209. The table contains numerical data representing the factors of each number in the range.

Lehmer's table of factors (1909) (reconstruction, D. Roegel, 2011)

Table with columns for numbers and their prime factors. The table is organized into rows, each representing a range of numbers. Each row contains a sequence of numbers and their corresponding prime factors, with some numbers having multiple factors listed. The table is a reconstruction of Lehmer's 1909 work on factoring numbers up to 5124000.

Lehmer's table of factors (1909) (reconstruction, D. Roegel, 2011)

Table with 40 columns and 40 rows of numerical data, representing Lehmer's table of factors. Each row contains a sequence of numbers, likely representing prime factors or related values for a specific range of integers.

Lehmer's table of factors (1909) (reconstruction, D. Roegel, 2011)

Table with columns for numbers and their prime factors, organized in rows and columns.

Lehmer's table of factors (1909) (reconstruction, D. Roegel, 2011)

Table with columns for numbers and their prime factors. The table is organized into rows, each representing a range of numbers. Each row contains a sequence of numbers and their corresponding prime factors, with some numbers having multiple factors listed. The table is a reconstruction of Lehmer's original work on factoring numbers between 5,166,000 and 5,187,000.

Lehmer's table of factors (1909) (reconstruction, D. Roegel, 2011)

Table with 100 columns and 100 rows of numerical data, representing Lehmer's table of factors. The table contains a grid of integers, with some cells containing multiple values separated by spaces or dashes. The rows are indexed from 01 to 07, and the columns from 247 to 5200.



Lehmer's table of factors (1909) (reconstruction, D. Roegel, 2011)

Table with columns for numbers (e.g., 248, 1, 11, 13, 17, 19, 23, 29, 31, 37, 41, 43, 47, 53, 59, 61, 67, 71, 73, 79, 83, 89, 97, 101, 103, 107, 109, 113, 121, 127, 131, 137, 139, 143, 149, 151, 157, 163, 167, 169, 173, 179, 181, 187, 191, 193, 197, 199, 209) and rows of factorization data.

Lehmer's table of factors (1909) (reconstruction, D. Roegel, 2011)

Table with columns for numbers and their prime factors, organized in groups of 10 rows. Each row contains a number and its prime factorization.

Lehmer's table of factors (1909) (reconstruction, D. Roegel, 2011)

Table with columns for numbers and their prime factors. The table is organized into rows, each representing a range of numbers. Each cell contains a list of prime factors for that number, separated by spaces. The numbers are arranged in ascending order within each row.

Lehmer's table of factors (1909) (reconstruction, D. Roegel, 2011)

Table with columns for numbers and their prime factors. The table is organized into rows, each representing a range of numbers. Each row contains a sequence of numbers and their corresponding prime factors, with some numbers having multiple factors listed. The table is a reconstruction of Lehmer's 1909 work on factoring numbers.

Lehmer's table of factors (1909) (reconstruction, D. Roegel, 2011)

Table with columns for numbers and their prime factors, organized in rows and columns. The table contains numerical data for the range 5292 to 5399.

Lehmer's table of factors (1909) (reconstruction, D. Roegel, 2011)

Table with columns for numbers and their prime factors. The table is organized into rows, with the first column indicating the number and subsequent columns listing its prime factors. The numbers range from 53,130 to 99,999. The factors are listed in ascending order for each number.

Lehmer's table of factors (1909) (reconstruction, D. Roegel, 2011)

Table with columns for numbers and their prime factors, organized in rows and columns.

Lehmer's table of factors (1909) (reconstruction, D. Roegel, 2011)

Table with columns for numbers and their prime factors, organized in rows and columns. The table contains numerical data for the range 5 355 000 to 5 376 000.



Lehmer's table of factors (1909) (reconstruction, D. Roegel, 2011)

Table with columns for numbers and their prime factors, organized in rows and columns. The table contains numerical data representing the factorization of integers in the range 5,376,000 to 5,397,000.

Lehmer's table of factors (1909) (reconstruction, D. Roegel, 2011)

Table with columns for numbers and their prime factors, organized in rows and columns. The table contains numerical data for the range 5397000 to 5418000.

Lehmer's table of factors (1909) (reconstruction, D. Roegel, 2011)

Table with columns for numbers (e.g., 258, 19, 20, 21, 22, 23, 24, 25, 26, 27, 28, 29, 30, 31, 32, 33, 34, 35, 36, 37, 38) and rows of numerical data representing factors and their frequencies.

Lehmer's table of factors (1909) (reconstruction, D. Roegel, 2011)

Table with columns for numbers and their prime factors, organized in rows and columns. The table contains numerical data for the range 5,439,000 to 5,460,000.

Lehmer's table of factors (1909) (reconstruction, D. Roegel, 2011)

Table with columns for numbers and their prime factors, organized in rows and columns.

Lehmer's table of factors (1909) (reconstruction, D. Roegel, 2011)

Table with columns for numbers and their prime factors, organized in rows and columns. The table contains numerical data for the range 5481000 to 5502000.

Lehmer's table of factors (1909) (reconstruction, D. Roegel, 2011)

Table with columns for numbers 262 to 209 and rows for factor groups 02 to 22. Each cell contains a list of prime factors for that number.

Lehmer's table of factors (1909) (reconstruction, D. Roegel, 2011)

Table with columns for numbers and their prime factors, organized in rows and columns. The table contains numerical data for the range 5 523 000 to 5 544 000.



Lehmer's table of factors (1909) (reconstruction, D. Roegel, 2011)

Table with columns for numbers 264 to 99 and rows of factor lists. Each row contains a list of prime factors for a specific number, with some numbers having multiple rows of factors.

Lehmer's table of factors (1909) (reconstruction, D. Roegel, 2011)

Table with columns for numbers and their prime factors, organized in rows and columns. The table contains numerical data representing the factorization of numbers in the range 5565000 to 5586000.

Lehmer's table of factors (1909) (reconstruction, D. Roegel, 2011)

Table with columns for numbers and their prime factors. The table is organized into rows, with the first column indicating the number and subsequent columns listing its prime factors. The numbers range from 55,860 to 56,919.

Lehmer's table of factors (1909) (reconstruction, D. Roegel, 2011)

Table with columns for numbers and their prime factors. The table is organized into rows, each representing a range of numbers. Each row contains a sequence of numbers and their corresponding prime factors, with some numbers having multiple factors listed. The table is a reconstruction of Lehmer's original work on factoring numbers in the range 5,607,000 to 5,628,000.

Lehmer's table of factors (1909) (reconstruction, D. Roegel, 2011)

Table with columns for numbers and their prime factors. The table is organized into rows, each representing a range of numbers. Each row contains a sequence of numbers and their corresponding prime factors, with some numbers having multiple factors listed.

Lehmer's table of factors (1909) (reconstruction, D. Roegel, 2011)

Table with columns for numbers and their prime factors, organized in rows and columns. The table contains numerical data for the range 5 649 000 to 5 670 000.

Lehmer's table of factors (1909) (reconstruction, D. Roegel, 2011)

Table with columns for numbers and their prime factors, organized in rows and columns.

Lehmer's table of factors (1909) (reconstruction, D. Roegel, 2011)

Table with columns for numbers and their prime factors. The table is organized into rows, each representing a range of numbers. Each row contains a sequence of numbers and their corresponding prime factors, with some numbers having multiple factors listed. The table is a reconstruction of Lehmer's 1909 work on factoring numbers.



Lehmer's table of factors (1909) (reconstruction, D. Roegel, 2011)

Table with columns for numbers and their prime factors. The table is organized into rows, each representing a range of numbers. Each row contains a sequence of numbers and their corresponding prime factors, with some numbers having multiple factors listed. The table is a reconstruction of Lehmer's 1909 work on factoring numbers.

Lehmer's table of factors (1909) (reconstruction, D. Roegel, 2011)

Table with columns for numbers and their prime factors. The table is organized into rows, each representing a range of numbers. Each row contains a sequence of numbers and their corresponding prime factors, with some numbers having multiple factors listed. The table is a reconstruction of Lehmer's 1909 work on factoring numbers.

Lehmer's table of factors (1909) (reconstruction, D. Roegel, 2011)

Table with columns for numbers and their prime factors, organized in rows and columns.

Lehmer's table of factors (1909) (reconstruction, D. Roegel, 2011)

275	1	11	13	17	19	23	29	31	37	41	43	47	53	59	61	67	71	73	79	83	89	97	101	103	107	109	113	121	127	131	137	139	143	149	151	157	163	167	169	173	179	181	187	191	193	197	199	209				
57	75	0	23	11	673	--	17	1061	13	19	--	--	23	17	--	--	613	101	31	29	59	--	--	73	13	457	1013	11	--	811	41	23	11	--	229	661	313	181	337	277	199	283	11	--	573	--	67	11				
1	13	19	17	593	761	359	--	--	2341	53	11	17	13	31	--	23	101	97	13	37	89	733	139	47	113	11	23	31	--	11	1913	--	71	17	167	13	19	1153	29	41	83	443	131	--	--	11	--	11	--	13		
2	--	--	353	29	--	--	19	11	--	17	53	67	11	367	--	--	1409	587	--	1033	137	11	--	13	--	17	557	61	41	--	--	157	17	53	--	109	11	--	37	929	23	13	1533	29	--	331	41					
3	17	31	829	1499	11	13	103	--	--	11	--	19	--	47	--	--	18	--	--	13	23	--	17	29	13	263	13	23	--	17	79	37	547	71	433	1023	13	31	--	11	13	37	563	--	273	31						
4	--	--	--	707	--	11	1277	47	--	--	13	--	--	13	--	29	61	193	11	569	59	--	--	17	751	19	--	503	897	--	23	17	2129	11	--	67	1117	1289	23	19	--	--	191	37	--	17	--					
5	641	43	71	11	13	17	--	--	127	--	--	--	--	--	11	--	353	13	--	--	11	353	13	23	1613	599	47	--	19	11	37	157	89	--	11	--	367	--	83	709	1223	163	109	--	--	11	19	29				
6	31	67	61	13	--	149	23	101	173	--	--	13	29	283	43	--	521	11	--	--	379	103	1597	--	19	167	41	223	199	13	--	239	11	19	37	1669	1103	53	29	23	--	13	--	11	17	--	--	13	227			
7	1399	17	--	2039	11	2103	157	11	13	19	61	53	11	41	13	421	1171	17	--	1511	79	1571	31	11	43	--	17	--	17	--	29	--	107	41	--	1103	19	31	823	11	173	--	17	23	11	43	13	359				
8	1789	317	--	167	37	19	73	1019	78	--	43	1323	1523	19	397	761	17	--	--	13	235	41	1709	11	17	383	11	43	11	43	11	1049	67	--	19	31	13	167	--	17	11	59	--	--	137	11						
9	109	13	11	271	--	--	--	37	13	19	23	457	31	--	--	17	103	--	--	11	1637	13	11	--	--	349	--	29	241	--	--	1777	97	79	389	313	--	53	11	17	647	37	23	293	13	1823	47					
10	11	--	--	23	29	11	31	--	--	2131	37	73	137	19	13	11	--	--	--	--	--	--	--	--	347	401	23	13	59	--	131	--	13	1279	61	107	89	17	251	41	19	--	487	47	13	29	17					
11	19	11	--	109	1747	641	59	71	23	29	--	127	--	13	53	31	47	421	277	23	17	--	151	601	97	197	--	--	11	43	229	13	271	11	--	--	17	13	53	--	71	--	11	17	101	79	--	11				
12	--	23	--	--	19	--	--	13	--	1579	11	199	--	103	523	37	419	--	--	593	13	43	257	--	23	--	11	--	29	947	11	--	509	47	23	17	--	1153	31	53	59	29	137	13	--	83	11	--	19			
13	73	1301	43	19	31	919	13	11	19	--	--	17	463	11	--	89	--	661	113	37	139	--	11	227	--	13	1021	19	47	--	163	43	--	--	29	67	19	--	11	347	23	17	--	--	499	1427	--	59	--			
14	13	--	43	19	--	89	--	17	11	--	--	13	97	--	41	17	67	13	73	113	23	--	--	--	--	--	--	--	--	--	--	--	--	--	17	23	41	11	13	61	107	19	11	127	31	2371	257	47	37	79	13	
15	--	--	29	233	73	--	11	17	163	467	71	103	281	1693	43	--	--	11	17	163	467	71	103	281	1693	43	--	--	--	--	251	--	67	--	11	313	19	--	31	23	17	--	191	--	13	19	--	701	61	--	23	--
16	--	--	127	11	1741	13	269	--	653	37	103	--	--	19	17	11	--	31	--	--	11	--	241	13	2063	--	43	911	113	11	--	23	41	89	11	29	--	137	19	--	271	13	131	2099	--	11	439	2141	29	--		
17	--	41	2267	1289	17	317	223	107	73	--	79	13	17	--	--	59	11	13	--	--	59	11	13	--	--	--	509	19	67	17	37	167	11	83	61	173	13	23	--	--	227	29	53	11	--	71	--	--	11	--		
18	239	47	17	137	13	31	1489	401	11	--	359	17	691	11	2333	--	13	109	29	983	19	--	79	29	13	127	11	--	11	--	83	1811	19	23	29	37	727	13	--	2081	--	1163	11	--	829	53	503	11	--	2027	47	31
19	41	31	23	13	--	--	157	823	18	1093	17	13	11	--	23	31	983	--	13	--	13	--	18	29	11	--	829	31	15	11	13	--	--	307	17	19	23	11	--	43	113	13	11	1511	107	--	23	23	--			
20	17	19	11	--	--	07	151	487	--	31	43	607	--	239	47	13	--	--	--	1877	37	11	17	--	--	923	310	131	--	17	--	--	--	--	1129	97	19	11	167	83	1613	29	--	107	89	13	29	17	--	1801		
21	11	241	13	2309	--	11	17	--	--	521	--	23	191	71	11	139	41	1667	--	--	11	17	37	--	--	1871	101	1063	--	17	31	677	13	1471	79	61	--	--	13	--	131	19	53	23	619	--	11	137				
22	67	11	--	47	103	17	--	--	647	13	--	--	19	43	457	--	--	23	59	53	13	--	773	--	--	29	31	11	1669	59	173	43	11	--	193	251	197	13	349	--	--	1279	11	41	13	59	19	11	--			
23	23	--	--	17	--	383	149	317	--	83	--	23	367	67	13	71	--	--	29	421	--	--	79	43	19	--	83	223	11	13	263	1039	11	--	13	503	347	31	1229	--	811	--	269	19	293	17	13	67	11	373		
24	29	59	--	41	113	59	--	11	--	11	--	--	11	1259	11	--	--	11	--	1069	--	--	17	--	--	--	--	--	--	--	--	--	--	--	--	--	198	167	--	--	417	--	147	--	273	--	--	11	--			
25	29	--	2089	--	11	--	251	13	--	--	--	41	29	907	563	17	--	--	19	--	163	--	--	11	13	971	167	727	373	--	19	--	--	--	37	11	59	1201	--	--	11	23	151	13	137	--	43	173	17			
26	89	569	37	31	461	29	11	--	233	1237	19	--	--	23	17	--	11	31	61	41	311	17	941	13	--	769	1777	--	63	109	11	--	--	--	--	19	--	17	--	89	797	229	73	2293	29	23	103					
27	13	--	--	11	--	19	--	83	443	--	41	397	13	1297	11	--	113	--	13	11	--	211	--	--	29	1427	--	--	43	11	13	19	--	1951	11	--	--	13	17	--	1721	23	31	--	1307	11	17	53	13			
28	--	71	--	157	131	677	61	31	37	19	--	--	1901	29	11	47	19	43	17	359	23	13	--	137	467	883	--	--	11	601	983	--	61	17	1367	47	43	--	--	11	17	19	--	269	73	--	209	79				
29	29	--	2351	13	23	--	--	--	--	1609	--	13	29	--	--	13	--	1609	--	--	13	--	--	17	--	--	31	189	13	97	--	13	199	339	--	--	31	171	67	29	31	23	11	14	1559	11	11	29				
30	19	--	--	71	--	--	--	151	101	17	11	29	197	37	347	--	13	191	--	1061	61	461	2131	31	--	11	127	139	--	--	--	--	1619	13	11	--	227	--	29	1151	11	463	23	19	103	67	--	37				
31	397	179	11	29	13	23	--	--	17	1051	--	827	229	--	331	13	37	11	31	--	13	11	--	269	811	--	67	--	61	149	17	--	13	--	541	73	11	1697	17	--	41	29	1373	89	--	11	59					
32	11	37	--	13	1327	11	--	17	19	191	13	661	79	31	419	11	--	47	--	11	29	277	43	--	--	--	19	13	--	953	--	--	83	--	19	1187	349	17	--	13	67	23	617	--	--	499	227	11	53			
33	79	11	41	19	751	37	107	--	1217	13	283	--	139	17	29	13	--	881	479	--	401	31	--	67	--	23	--	11	17	19	1399	439	11	619	43	193	--	113	19	--	73	11	--	109	13	61	11					
34	51	53	13	17	--	61	71	11	13	--	--	17	11	--	--	1549	457	311	613	13	11	--	23	53	11	--	--	13	11	--	23	11	--	97	11	--	13	29	--	11	49	1559	11	11	29	--	73	109				
35	101																																																			

Lehmer's table of factors (1909) (reconstruction, D. Roegel, 2011)

Table with columns for numbers and their prime factors, organized in rows and columns. The table contains numerical data for the range 5796000 to 5817000.

Lehmer's table of factors (1909) (reconstruction, D. Roegel, 2011)

Table with columns for numbers and their prime factors. The table is organized into rows, each representing a range of numbers. Each row contains the number and its prime factors in a specific order. The numbers range from 277 to 99, and the factors are listed in a sequence that corresponds to the Lehmer sieve algorithm.

Lehmer's table of factors (1909) (reconstruction, D. Roegel, 2011)

Table with columns for numbers and their prime factors, organized in rows and columns. The table contains numerical data representing the factorization of integers in the range 5,838,000 to 5,859,000.

Lehmer's table of factors (1909) (reconstruction, D. Roegel, 2011)

Table with columns for numbers and their prime factors. The table is organized into rows, with the first column containing the number and subsequent columns containing its prime factors. The numbers range from 58,500 to 99,000.



Lehmer's table of factors (1909) (reconstruction, D. Roegel, 2011)

Table with 40 columns (numbered 280 to 59 000) and 40 rows (numbered 58 80 to 99). Each cell contains a sequence of numbers representing factors or values for that specific number and row.

Lehmer's table of factors (1909) (reconstruction, D. Roegel, 2011)

Table with columns for numbers 281-299 and rows for factors 01-21. Each cell contains a list of prime factors for that number.

Lehmer's table of factors (1909) (reconstruction, D. Roegel, 2011)

Table with columns for numbers and their prime factors, organized in groups of 10 rows. Each row contains a number and its prime factors in ascending order.

Lehmer's table of factors (1909) (reconstruction, D. Roegel, 2011)

Table with columns for numbers and their prime factors. The table is organized into rows, each representing a range of numbers. Each row contains a sequence of numbers and their corresponding prime factors, with some numbers having multiple factors listed.

Lehmer's table of factors (1909) (reconstruction, D. Roegel, 2011)

Table with columns for numbers and their factors, organized in rows and columns. The table contains numerical data representing factorizations for numbers in the range 5,964,000 to 5,985,000.

Lehmer's table of factors (1909) (reconstruction, D. Roegel, 2011)

Table with columns for numbers and their prime factors. The table is organized into rows corresponding to the numbers 5085 through 9919. Each row contains the number followed by its prime factors in ascending order, separated by spaces. For example, the first row is '5085 3 5 11 17 19 23 29 31 37 41 43 47 53 59 61 67 71 73 79 83 89 97 101 103 107 109 113 121 127 131 137 139 143 149 151 157 163 167 169 173 179 181 187 191 193 197 199 209'.

Lehmer's table of factors (1909) (reconstruction, D. Roegel, 2011)

Table with columns for numbers and their prime factors. The table is organized into rows, each representing a range of numbers. Each row contains a sequence of numbers and their corresponding prime factors, with some numbers having multiple factors listed. The table is a reconstruction of Lehmer's 1909 work on factoring numbers.

Lehmer's table of factors (1909) (reconstruction, D. Roegel, 2011)

A large grid table with columns numbered 287 to 99 and rows numbered 60 to 99. Each cell contains numerical data representing factors or values.



Lehmer's table of factors (1909) (reconstruction, D. Roegel, 2011)

Table with 20 columns and 99 rows of numerical data, representing Lehmer's table of factors for numbers 6048000 to 6069000.

Lehmer's table of factors (1909) (reconstruction, D. Roegel, 2011)

Table with columns for numbers 289-999 and rows for factors. The table contains numerical data representing the factors of integers in the range 6069000 to 6090000.

Lehmer's table of factors (1909) (reconstruction, D. Roegel, 2011)

Table with columns for numbers and their prime factors, organized in rows and columns. The table contains numerical data for the range 6090000 to 6111000.

Lehmer's table of factors (1909) (reconstruction, D. Roegel, 2011)

Table with 20 columns (numbered 1-20) and 20 rows (numbered 1-20). Each cell contains a list of integers representing factors of numbers in the range 6111000 to 6132000. The numbers are arranged in a grid-like pattern with some missing values indicated by dashes.

Lehmer's table of factors (1909) (reconstruction, D. Roegel, 2011)

Table with columns for numbers 61-62 and rows for factors 1-99. Each cell contains a list of prime factors for that number.

Lehmer's table of factors (1909) (reconstruction, D. Roegel, 2011)

Table with columns for numbers and their prime factors, organized in rows and columns. The table contains numerical data for the range 6153000 to 6174000.

Lehmer's table of factors (1909) (reconstruction, D. Roegel, 2011)

Large table with columns for numbers and their prime factors, organized in rows and columns.

Lehmer's table of factors (1909) (reconstruction, D. Roegel, 2011)

Table with columns for numbers and their prime factors. The table is organized into rows corresponding to the numbers 295 to 999. Each row contains the number followed by its prime factors in ascending order, separated by spaces. For example, row 295: 295 1 11 13 17 19 23 29 31 37 41 43 47 53 59 61 67 71 73 79 83 89 97 101 103 107 109 113 121 127 131 137 139 143 149 151 157 163 167 169 173 179 181 187 191 193 197 199 203. The table continues in this pattern up to row 999.



Lehmer's table of factors (1909) (reconstruction, D. Roegel, 2011)

Table with columns for numbers and their prime factors, organized in rows of 10 numbers each. The table covers the range from 296 to 999.

Lehmer's table of factors (1909) (reconstruction, D. Roegel, 2011)

Table with columns for numbers and their prime factors, organized in rows and columns. The table contains numerical data for the range 6,237,000 to 6,258,000.

Lehmer's table of factors (1909) (reconstruction, D. Roegel, 2011)

Table with columns for numbers and their prime factors, organized in rows of 20 numbers each. The table contains factorizations for numbers from 298 to 79.

Lehmer's table of factors (1909) (reconstruction, D. Roegel, 2011)

Table with 30 columns and 99 rows of numerical data representing Lehmer's table of factors.

Lehmer's table of factors (1909) (reconstruction, D. Roegel, 2011)

Table with columns for numbers and their prime factors, organized in groups of 10 rows. Each row contains a number and its prime factors in a specific order.

Lehmer's table of factors (1909) (reconstruction, D. Roegel, 2011)

Table with columns for numbers and their prime factors, organized in rows of 20 numbers each. The table contains a dense grid of numerical data representing the factorization of integers from 63,201 to 99,719.

Lehmer's table of factors (1909) (reconstruction, D. Roegel, 2011)

Table with columns for numbers and their prime factors, organized in rows and columns. The table contains numerical data for the range 63420 to 99000.

Lehmer's table of factors (1909) (reconstruction, D. Roegel, 2011)

Table with columns for factor ranges (e.g., 63-64, 64-65) and rows for individual numbers (e.g., 6303, 6304, 6305). Each cell contains a list of prime factors for that number.



Lehmer's table of factors (1909) (reconstruction, D. Roegel, 2011)

Table with columns for numbers and their prime factors, organized in groups of 10 rows. Each row contains a number and its prime factorization.

Lehmer's table of factors (1909) (reconstruction, D. Roegel, 2011)

64	05	805	1	11	13	17	19	23	29	31	37	41	43	47	53	59	61	67	71	73	79	83	89	97	101	103	107	109	113	121	127	131	137	139	143	149	151	157	163	167	169	173	179	181	187	191	193	197	199	209				
06	5	0	769	--	--	--	23	47	--	--	701	1289	--	--	--	13	--	--	19	17	--	79	99	--	677	--	53	17	11	1103	31	--	--	13	29	--	--	43	11	--	109	--	401	11	37	--	13	83	349	1013	17			
1	2	57	--	--	11	1499	223	569	73	79	23	31	419	1061	--	--	--	16	631	--	11	23	19	41	11	31	29	101	43	--	--	19	107	13	409	--	83	149	--	13	11	17	1097	41	--	67	37	71	43	89				
2	11	23	29	31	239	11	439	13	--	--	--	--	103	--	379	17	11	29	--	31	13	11	--	--	101	23	19	13	--	--	107	13	53	--	--	859	23	59	--	17	--	97	--	1889	1601	13	190	1907	17	11	43	89		
3	11	13	11	--	829	59	71	269	--	--	--	103	103	45	--	--	22	27	--	17	17	--	--	11	11	11	11	11	11	--	--	107	13	53	--	--	107	13	53	--	--	107	13	53	--	67	37	71	43	89				
4	13	773	1213	83	293	193	19	31	--	--	41	11	2287	13	--	--	--	--	--	--	--	--	--	--	--	647	11	89	2531	347	11	97	--	19	--	19	--	17	13	1579	127	199	29	1283	10	241	79	337	11	109	13			
06	5	--	2393	163	--	37	1093	--	--	11	--	419	17	19	11	--	--	71	23	--	29	181	659	11	--	13	1801	61	53	99	--	31	29	79	--	--	1877	1429	11	37	--	443	17	13	779	47	31	--	19	23				
6	73	283	251	1453	11	13	311	37	--	--	117	29	--	--	1783	--	439	17	2297	67	--	919	421	13	19	11	--	41	--	13	739	23	17	61	1789	11	263	1237	--	31	11	13	43	--	677	1019	--	1381	1459					
7	809	53	--	89	23	--	11	17	--	--	1279	37	13	47	--	101	41	1171	11	--	19	97	223	--	--	653	19	353	--	67	11	43	41	13	23	59	17	--	--	139	29	--	37	79	19	--	1481	--						
8	7	--	53	11	103	29	--	--	--	1468	--	107	29	11	11	--	140	--	107	13	--	11	61	--	--	33	11	23	131	19	--	11	--	2239	29	--	--	43	--	--	761	--	--	43	11	--	743	--						
9	61	1733	23	13	17	--	--	2207	139	--	13	--	17	23	--	--	13	--	17	23	--	11	2089	71	--	--	19	31	73	47	--	--	--	--	--	--	19	107	29	491	13	--	811	17	11	151	797	23	13	--				
07	10	433	31	17	53	--	19	43	--	11	13	67	17	743	11	19	13	397	--	23	397	--	--	--	--	--	11	13	883	--	113	573	--	29	19	--	--	1847	17	--	61	--	107	11	523	--	859	277	11	--	13	--		
11	269	103	13	37	53	--	101	59	29	17	137	11	23	47	--	89	337	151	37	--	--	2081	193	67	2053	--	17	11	--	211	--	149	--	13	59	--	--	31	11	13	31	11	--	23	19	--	569	--	--	--				
12	17	13	11	71	1063	2473	37	--	--	--	--	--	--	--	19	181	2273	--	23	11	41	13	19	11	17	137	971	673	157	53	47	17	499	179	31	--	431	83	11	613	19	1033	--	467	811	13	503	997	2399	--	--			
13	11	11	--	101	173	--	11	17	139	41	37	--	--	23	109	857	13	11	509	409	--	59	11	--	--	1723	47	13	--	--	--	--	--	--	--	--	--	2383	--	--	43	107	89	31	13	--	29	11	103	--				
14	23	--	17	--	167	19	--	283	--	397	--	227	151	37	13	109	23	307	41	163	--	--	--	1759	31	29	--	59	23	11	37	53	13	1543	11	89	--	--	13	229	1571	--	--	47	11	--	17	--	547	--				
08	15	1511	43	--	--	17	--	--	193	13	19	23	11	--	293	--	29	1307	--	1117	13	877	43	2243	--	--	11	19	1901	--	11	1481	31	127	--	19	239	--	139	523	--	23	--	13	41	113	67	--	--					
16	461	17	1997	19	179	463	13	11	199	79	47	--	--	11	43	23	--	241	487	17	--	29	11	--	--	601	13	--	--	17	--	--	19	47	97	--	359	37	--	11	2303	19	--	431	17	127	101	--	--	103	23	113		
17	13	--	157	41	11	--	31	53	197	11	1187	67	13	563	--	--	467	17	13	--	--	37	181	163	71	11	83	2357	--	23	13	53	--	--	19	11	13	37	179	29	11	--	41	19	1597	43	281	--	--	--				
18	643	--	--	29	--	1601	11	--	1021	521	--	1063	19	--	--	17	--	--	11	509	409	--	59	11	--	--	17	13	97	73	151	--	--	1109	--	--	--	149	773	19	17	--	167	13	47	29	23	--	89	1931	--			
19	23	--	197	--	11	--	13	23	43	--	--	--	--	23	1559	11	2011	19	--	--	1279	41	29	13	--	--	--	--	--	--	--	--	--	--	--	--	--	--	--	--	1471	17	23	677	--	13	929	37	73	11	17	--	547	--
09	20	--	157	19	--	31	--	--	1553	53	71	41	13	--	373	29	--	--	13	13	--	11	43	461	17	--	--	109	607	--	19	61	11	--	--	31	79	13	17	--	--	11	23	17	--	--	37	--	--					
21	1867	67	317	1907	13	23	409	19	11	43	61	1303	269	11	--	173	13	--	41	17	479	13	--	11	19	757	--	47	43	1409	37	--	--	389	13	17	1583	263	--	11	59	--	31	233	11	--	--	29	73	--				
22	37	19	--	13	1777	--	163	--	2347	53	13	11	--	--	--	2389	89	--	113	--	--	23	661	--	--	193	1031	503	11	13	--	--	--	1801	101	37	1097	11	19	251	197	13	11	23	--	179	47	41	13	647	--			
23	149	29	11	23	--	307	19	743	17	13	53	241	--	--	281	13	17	761	11	--	--	1151	313	--	--	89	41	--	71	29	131	43	17	19	53	41	1789	877	11	103	17	--	19	937	311	--	13	--	1087	--				
10	24	97	13	--	--	--	31	--	708	17	--	17	203	11	708	17	--	--	53	547	53	--	17	43	--	--	1607	631	--	13	823	257	19	--	67	29	11	17	487	199	367	11	23	--	691	--	--	13	--	28	--	--		
25	--	--	11	107	--	--	--	--	419	13	--	547	53	--	17	43	--	--	--	--	--	1607	631	--	--	13	823	257	19	--	67	29	11	17	487	199	367	11	23	--	691	--	--	13	--	28	--	--	11	--	--			
26	2287	47	41	107	17	43	773	23	--	653	11	--	17	71	13	59	--	--	191	269	19	--	--	--	421	11	13	17	--	--	11	1567	13	113	--	277	103	--	67	23	97	--	73	--	13	29	11	47	--	--				
27	83	--	17	--	--	--	--	--	11	31	29	--	17	11	13	37	1327	43	--	--	47	89	11	19	101	--	991	--	251	--	41	13	19	23	17	--	29	11	83	181	--	2411	--	--	173	--	601	--	--	37	--			
28	59	--	--	211	--	2521	--	--	13	61	11	19	2297	53	--	47	--	23	37	--	--	33	--	--	--	619	11	13	--	29	151	--	31	--	--	17	67	11	19	23	41	--	11	29	2213	13	1297	--	269	31	23	--		
11	23	17	--	311	381	19	--	--	448	19	--	283	19	--	--	75	14	--	--	--	--	13	17	--	--	13	239	41	--	--	--	--	--	--	--	--	--	--	--	--	109	1013	--	--	109	739	11	307	29	23	--	1553	--	
30	13	1549	229	11	23	37	17	--	--	19	43	743	13	--	--	11	613	71	--	--	13	11	31	17	2027	79	29	97	727	--	--	11	13	--	--	467	11	31	13	53	--	--	223	349	1993	709	1823	11	373	17	13	--	--	
31	1427	--	29	61	--	17	41	--	107	733	173	--	--	181	19	--	281	11	907	59	--	--	--	--	19	151	13	1399	37	1061	167	31	23	11	61	139	1319	--	83	--	263	191	19	787	11	29	--	17	59	--	79	--		
32	19	827	23	17	1103	13	--	--	11	31	--	37	43	11	53	47	--	--	--	--	383	73	1277	13	11	89	--	37	37	13	--	367	43	919	--	23	79	--	53	11	61	13	--	17	11	151	23	223	29	--	--			
33	139	17	59	31	19	--	113	--	67	--	--	11	1381	37	97	--	853	13	17	--	--	2221	41	2381	157	193	11	977	31	59	--	47	1901	211	13	11	2399	--	53	29	11	17	43	--	887	--	1637	19	--	--				
12	34	--	1051	11	--	13</																																																

Lehmer's table of factors (1909) (reconstruction, D. Roegel, 2011)

Table with columns for numbers and their prime factors. The table is organized into rows, with the first column indicating the number and subsequent columns listing its prime factors. The numbers range from 64,260 to 99,130.

Lehmer's table of factors (1909) (reconstruction, D. Roegel, 2011)

Table with columns for numbers 6447-99 and rows for factors 1-209. The table contains numerical data representing the factorization of numbers in the range 6447-99.

Lehmer's table of factors (1909) (reconstruction, D. Roegel, 2011)

Table with columns for numbers and their prime factors, organized in rows and columns.

Lehmer's table of factors (1909) (reconstruction, D. Roegel, 2011)

Table with columns for numbers and their prime factors. The table is organized into rows, with the first column containing the number and subsequent columns containing its prime factors. The numbers range from 64 89 to 99.

Lehmer's table of factors (1909) (reconstruction, D. Roegel, 2011)

Table with columns for numbers 6500-6531 and rows for factors. Each cell contains a list of prime factors for that number.

Lehmer's table of factors (1909) (reconstruction, D. Roegel, 2011)

Table with columns for numbers and their prime factors. The table contains multiple rows of data, each representing a number and its decomposition into prime factors. The numbers range from 65,311 to 99,999. Factors are listed in ascending order, with some numbers having multiple instances of the same factor.



Lehmer's table of factors (1909) (reconstruction, D. Roegel, 2011)

Table with columns 1-32 and rows 65-99. Each row contains 32 numerical values representing factors in Lehmer's table.

Lehmer's table of factors (1909) (reconstruction, D. Roegel, 2011)

Table with columns for numbers 313 to 991823 and rows for factors 1 to 209. Each cell contains a factor or a dash indicating no factor.

Lehmer's table of factors (1909) (reconstruction, D. Roegel, 2011)

Table with columns for numbers and their prime factors. The table is organized into rows, each representing a range of numbers. Each row contains the number followed by its prime factors in ascending order. For example, row 64 shows numbers 314 to 320 and their factors: 314 (2, 171, 91), 315 (3, 5, 7, 37), etc.

Lehmer's table of factors (1909) (reconstruction, D. Roegel, 2011)

Table with columns for numbers (315-99) and rows for factors (1-35). Each cell contains a list of prime factors for that number.

Lehmer's table of factors (1909) (reconstruction, D. Roegel, 2011)

Table with columns for numbers and their prime factors, organized in rows of 10 numbers each. The table covers the range from 66,306 to 66,599.

Lehmer's table of factors (1909) (reconstruction, D. Roegel, 2011)

Table with columns for numbers and their prime factors, organized in rows of 10 numbers each. The table covers the range from 66,57 to 99,79.

Lehmer's table of factors (1909) (reconstruction, D. Roegel, 2011)

Table with columns for numbers 6678-6699 and rows for factors 1-209. Each cell contains a factor or a dash indicating no factor.

Lehmer's table of factors (1909) (reconstruction, D. Roegel, 2011)

Table with columns for numbers and their prime factors, organized in rows and columns. The table contains numerical data for the range 6699 to 9913.



Lehmer's table of factors (1909) (reconstruction, D. Roegel, 2011)

Table with columns for numbers and their prime factors, organized in rows and columns. The table contains numerical data for the range 6720 to 6741.

Lehmer's table of factors (1909) (reconstruction, D. Roegel, 2011)

Table with 20 columns and 61 rows of numerical data, representing Lehmer's table of factors for the range 6 741 000 to 6 762 000.

Lehmer's table of factors (1909) (reconstruction, D. Roegel, 2011)

Table with columns for numbers and their prime factors, organized in rows and columns. The table contains numerical data for the range 6762000 to 6783000.

Lehmer's table of factors (1909) (reconstruction, D. Roegel, 2011)

Table with columns for numbers and their prime factors, organized in groups of 10 rows. Each row contains a number and its prime factorization.

Lehmer's table of factors (1909) (reconstruction, D. Roegel, 2011)

Table with columns for numbers and their prime factors. The table is organized into rows, each representing a range of numbers. Each cell contains a list of prime factors for that number, separated by spaces. The numbers are arranged in ascending order within each row.

Lehmer's table of factors (1909) (reconstruction, D. Roegel, 2011)

Table with columns for numbers and their prime factors. The table is organized into rows, with the first column containing the number and subsequent columns containing its prime factors. The numbers range from 68,250 to 99,800.

Lehmer's table of factors (1909) (reconstruction, D. Roegel, 2011)

Table with columns for numbers and their prime factors, organized in rows and columns. The table contains numerical data for the range 6846000 to 6867000.

Lehmer's table of factors (1909) (reconstruction, D. Roegel, 2011)

Table with columns for numbers and their prime factors, organized in rows and columns. The table contains numerical data for the range 6867 to 9999.



Lehmer's table of factors (1909) (reconstruction, D. Roegel, 2011)

Table with columns for numbers and their prime factors. The table contains 19 rows of numbers and their corresponding prime factorizations.

Lehmer's table of factors (1909) (reconstruction, D. Roegel, 2011)

Table with columns for numbers and their prime factors, organized in rows and columns. The table contains numerical data for the range 6909 to 6930.

Lehmer's table of factors (1909) (reconstruction, D. Roegel, 2011)

Table with columns for numbers and their prime factors. The table is organized into rows, with the first column indicating the number and subsequent columns listing its prime factors. The numbers range from 6930 to 9950.

Lehmer's table of factors (1909) (reconstruction, D. Roegel, 2011)

Table with columns for numbers and their prime factors. The table is organized into rows, with the first column containing the number and subsequent columns containing its prime factors. The numbers range from 6051 to 99.

Lehmer's table of factors (1909) (reconstruction, D. Roegel, 2011)

Table with columns for numbers and their prime factors, organized in rows and columns. The table contains numerical data for the range 6972000 to 6993000.

Lehmer's table of factors (1909) (reconstruction, D. Roegel, 2011)

Table with columns for numbers and their prime factors, organized in rows and columns. The table contains numerical data for the range 6993 to 7014.

Lehmer's table of factors (1909) (reconstruction, D. Roegel, 2011)

Table with columns for numbers 7014-7035 and rows for factors 1-209. Each cell contains a factor or a dash indicating no factor.

Lehmer's table of factors (1909) (reconstruction, D. Roegel, 2011)

Table with 100 rows and 100 columns of numerical data, representing Lehmer's table of factors. The table contains a grid of integers, with some cells containing multiple values separated by spaces. The rows are indexed from 70 to 99, and the columns from 355 to 999.



Lehmer's table of factors (1909) (reconstruction, D. Roegel, 2011)

Table with columns for numbers and their prime factors, organized in rows and columns. The table contains numerical data for the range 7,056,000 to 7,077,000.

Lehmer's table of factors (1909) (reconstruction, D. Roegel, 2011)

Table with columns for numbers 437 to 999 and rows for factors 1 to 209. The table contains numerical data representing the factors of integers in the range 7077000 to 7098000.

Lehmer's table of factors (1909) (reconstruction, D. Roegel, 2011)

Table with columns for numbers and their prime factors, organized in rows and columns. The table contains numerical data for the range 7098 to 99.

Lehmer's table of factors (1909) (reconstruction, D. Roegel, 2011)

Table with columns for numbers and their prime factors. The table is organized into rows, each representing a range of numbers. Each row contains a sequence of numbers and their corresponding prime factors, with some numbers having multiple factors listed.

Lehmer's table of factors (1909) (reconstruction, D. Roegel, 2011)

Table with columns for numbers and their prime factors, organized in rows and columns. The table contains numerical data representing the factorization of integers in the range 7140000 to 7161000.

Lehmer's table of factors (1909) (reconstruction, D. Roegel, 2011)

Table with 40 columns and 1000 rows of numerical data, representing Lehmer's table of factors for numbers between 7161000 and 7182000.

Lehmer's table of factors (1909) (reconstruction, D. Roegel, 2011)

Table with columns for numbers 7182-99 and rows for factors 1-19. Each cell contains a digit representing a factor's presence.

Lehmer's table of factors (1909) (reconstruction, D. Roegel, 2011)

Table with 34 columns and 1000 rows of numerical data, representing Lehmer's table of factors for the range 7 203 000 to 7 224 000.



Lehmer's table of factors (1909) (reconstruction, D. Roegel, 2011)

Table with columns for numbers and their prime factors, organized in rows and columns. The table contains numerical data for the range 7224000 to 7245000.

Lehmer's table of factors (1909) (reconstruction, D. Roegel, 2011)

Table with 40 columns (numbered 345 to 726) and 40 rows (numbered 42 to 65). Each cell contains a numerical value representing a factor or reconstruction data.

Lehmer's table of factors (1909) (reconstruction, D. Roegel, 2011)

Table with 36 columns and 100 rows of numerical data, representing Lehmer's table of factors. Each row contains a sequence of numbers, likely representing prime factors or their exponents for a specific range of integers.

Lehmer's table of factors (1909) (reconstruction, D. Roegel, 2011)

Table with columns for numbers and their prime factors, organized in rows and columns. The table contains numerical data for the range 7287 to 99293.

Lehmer's table of factors (1909) (reconstruction, D. Roegel, 2011)

Table with columns for numbers (348-999) and their prime factors. The table is organized into rows of 10 numbers each, with columns representing individual prime factors. The numbers are listed in the first column, and their prime factors are listed in the subsequent columns.

Lehmer's table of factors (1909) (reconstruction, D. Roegel, 2011)

Table with columns for numbers (349-99) and rows for factors (73-99). Each cell contains a list of prime factors for that number.

Lehmer's table of factors (1909) (reconstruction, D. Roegel, 2011)

Table with columns for numbers 350-999 and rows for factors. Each cell contains a list of prime factors for that number, separated by spaces. The table is organized into groups of 10 rows, labeled 350-70 on the left side.

Lehmer's table of factors (1909) (reconstruction, D. Roegel, 2011)

Table with columns for numbers and their prime factors, organized in rows and columns. The table contains numerical data for the range 7371 to 9911.



Lehmer's table of factors (1909) (reconstruction, D. Roegel, 2011)

Table with columns for numbers and their prime factors, organized in rows and columns. The table contains numerical data for the range 7392000 to 7413000.

Lehmer's table of factors (1909) (reconstruction, D. Roegel, 2011)

Table with columns for numbers and their prime factors, organized in rows and columns. The table contains numerical data for the range 7413 to 99019.

Lehmer's table of factors (1909) (reconstruction, D. Roegel, 2011)

Table with columns for numbers and their prime factors, organized in rows and columns. The table contains numerical data for the range 7434000 to 7455000.

Lehmer's table of factors (1909) (reconstruction, D. Roegel, 2011)

Table with columns for numbers and their prime factors, organized in rows of 20 numbers each. The numbers range from 74,550 to 99,240. Factors are listed in columns, with some numbers having multiple columns of factors.

Lehmer's table of factors (1909) (reconstruction, D. Roegel, 2011)

Table with columns for numbers and their prime factors, organized in groups of 10 rows. Each row contains a number followed by its prime factors in ascending order.

Lehmer's table of factors (1909) (reconstruction, D. Roegel, 2011)

Table with columns for numbers and their prime factors, organized in rows and columns. The table contains numerical data for the range 7 497 000 to 7 518 000.

Lehmer's table of factors (1909) (reconstruction, D. Roegel, 2011)

Table with columns for numbers and their prime factors, organized in groups of 10 rows. Each row contains a number and its prime factors in a specific order.

Lehmer's table of factors (1909) (reconstruction, D. Roegel, 2011)

Table with columns for numbers 75-39 and rows for factor ranges. Each cell contains a list of prime factors for a specific number, such as '359 1 11 13 17 19 23 29 31 37 41 43 47 53 59 61 67 71 73 79 83 89 97 101 103 107 109 113 121 127 131 137 139 143 149 151 157 163 167 169 173 179 181 187 191 193 197 199 209'.



Lehmer's table of factors (1909) (reconstruction, D. Roegel, 2011)

Table with columns for numbers and their prime factors. The table is organized into rows, each representing a range of numbers. Each row contains a sequence of numbers and their corresponding prime factors, with some numbers having multiple factors listed.

Lehmer's table of factors (1909) (reconstruction, D. Roegel, 2011)

Table with columns for numbers and their prime factors. The table is organized into rows and columns, with numbers listed on the left and their corresponding prime factors on the right. The numbers range from 7581 to 9999. The factors are listed in a structured manner, often with sub-headers or groupings.

Lehmer's table of factors (1909) (reconstruction, D. Roegel, 2011)

Table with columns for numbers and their prime factors, organized in rows and columns. The table contains numerical data for the range 7 602 000 to 7 623 000.

Lehmer's table of factors (1909) (reconstruction, D. Roegel, 2011)

Table with columns for numbers 76-99 and rows for factors 1-209. Each cell contains a list of prime factors for that number.

Lehmer's table of factors (1909) (reconstruction, D. Roegel, 2011)

Table with 100 rows and 100 columns of numerical data, representing Lehmer's table of factors for numbers 764000 to 7665000.

Lehmer's table of factors (1909) (reconstruction, D. Roegel, 2011)

Table with columns for numbers and their prime factors, organized in rows and columns. The table contains numerical data for the range 7665000 to 7686000.

Lehmer's table of factors (1909) (reconstruction, D. Roegel, 2011)

Table with columns for numbers and their prime factors, organized in rows and columns.

Lehmer's table of factors (1909) (reconstruction, D. Roegel, 2011)

Table with columns for numbers and their prime factors, organized in rows and columns. The table contains numerical data for the range 7 707 000 to 7 728 000.



Lehmer's table of factors (1909) (reconstruction, D. Roegel, 2011)

Table with columns for numbers 77-99 and rows for factors 1-100. Each cell contains a small integer representing a factor or zero.

Lehmer's table of factors (1909) (reconstruction, D. Roegel, 2011)

Table with columns for numbers and their prime factors, organized in groups of 10 rows. Each row contains a number and its prime factorization.

Lehmer's table of factors (1909) (reconstruction, D. Roegel, 2011)

Table with columns 1-30 and rows 77-99. Each cell contains a sequence of integers representing factors. The table is a grid of numbers, with some cells containing multiple numbers separated by spaces. The numbers are arranged in a regular pattern, with some variations in the number of columns per row.

Lehmer's table of factors (1909) (reconstruction, D. Roegel, 2011)

Table with columns for numbers and their prime factors, organized in rows and columns. The table contains numerical data for the range 7 791 000 to 7 812 000.

Lehmer's table of factors (1909) (reconstruction, D. Roegel, 2011)

Table with 40 columns and 100 rows of numerical data, representing Lehmer's table of factors for the range 7 812 000 to 7 833 000.



Lehmer's table of factors (1909) (reconstruction, D. Roegel, 2011)

Table with columns for numbers 374 to 99 and rows for factors 1 to 209. The table contains numerical data representing factorizations for each number in the range.

Lehmer's table of factors (1909) (reconstruction, D. Roegel, 2011)

Table with columns for numbers and their prime factors. The table is organized into rows corresponding to the numbers 375 through 99. Each row contains the number followed by its prime factors in ascending order, separated by vertical bars. For example, row 375: 375 | 3 | 5 | 5 | 5. The table is a reconstruction of Lehmer's 1909 work on factoring numbers.



Lehmer's table of factors (1909) (reconstruction, D. Roegel, 2011)

Table with columns for numbers and their prime factors. The table is organized into rows corresponding to the numbers 786, 97, 98, 99, 70, 01, 02, 03, 04, 05, 06, 07, 08, 09, 10, 11, 12, 13, 14, 15, 16. Each row contains a sequence of numbers and their prime factors, with some numbers having multiple columns of factors.

Lehmer's table of factors (1909) (reconstruction, D. Roegel, 2011)

Table with columns for numbers and their prime factors, organized in rows and columns. The table contains numerical data representing the factorization of integers in the range 7,917,000 to 7,938,000.

Lehmer's table of factors (1909) (reconstruction, D. Roegel, 2011)

Table with columns for numbers and their prime factors, organized in rows and columns. The table contains numerical data for the range 7,938,000 to 7,959,000.

Lehmer's table of factors (1909) (reconstruction, D. Roegel, 2011)

Table with columns for numbers 79 509 to 99 199 and rows of factor data. Each row contains a sequence of numbers representing factors or their positions in a table.

Lehmer's table of factors (1909) (reconstruction, D. Roegel, 2011)

Table with columns for numbers 7980-8000 and rows for factors. Each row contains a list of prime factors for a specific number, with some numbers having multiple rows of factors.

Lehmer's table of factors (1909) (reconstruction, D. Roegel, 2011)

Table with columns for numbers and their prime factors, organized in groups of 10 rows. Each row contains a number followed by its prime factors in ascending order.

Lehmer's table of factors (1909) (reconstruction, D. Roegel, 2011)

Table with columns for numbers and their prime factors, organized in rows and columns.

Lehmer's table of factors (1909) (reconstruction, D. Roegel, 2011)

Table with columns for numbers and their prime factors, organized in rows and columns. The table contains numerical data for the range 8043 to 9953.



Lehmer's table of factors (1909) (reconstruction, D. Roegel, 2011)

Table with 100 columns and 100 rows of numerical data, representing Lehmer's table of factors for the range 8 064 000 to 8 085 000. Each row contains a sequence of numbers, with some cells containing multiple values separated by spaces.

Lehmer's table of factors (1909) (reconstruction, D. Roegel, 2011)

Table with columns for numbers and their prime factors. The table is organized into rows, each representing a range of numbers. Each row contains a sequence of numbers and their corresponding prime factors, with some numbers having multiple factors listed. The table is a reconstruction of Lehmer's 1909 work on factoring numbers.

Lehmer's table of factors (1909) (reconstruction, D. Roegel, 2011)

Table with columns for numbers and their prime factors, organized in rows and columns. The table contains numerical data for the range 81000 to 88500.

Lehmer's table of factors (1909) (reconstruction, D. Roegel, 2011)

Table with columns for numbers and their prime factors, organized in rows and columns.

Lehmer's table of factors (1909) (reconstruction, D. Roegel, 2011)

Table with columns for numbers and their prime factors, organized in rows of 20 numbers each. The numbers range from 888 to 999. Factors are listed in columns, with some numbers having multiple factors.

Lehmer's table of factors (1909) (reconstruction, D. Roegel, 2011)

81	69	0	1	11	13	17	19	23	29	31	37	41	43	47	53	59	61	67	71	73	79	83	89	97	101	103	107	109	113	121	127	131	137	139	143	149	151	157	163	167	169	173	179	181	187	191	193	197	199	203	
0	--	--	43	--	--	47	11	13	311	--	--	89	71	367	61	17	--	23	11	--	13	31	29	--	--	--	--	19	13	--	--	199	31	--	--	17	1627	139	137	--	--	151	137	--	37	17	59	20			
1	47	19	109	11	--	173	13	--	--	151	--	2791	--	43	11	--	1847	--	--	11	17	1993	79	--	--	--	--	13	--	--	1019	71	11	37	23	907	--	11	283	17	19	67	--	--	173	13					
2	13	--	--	97	23	1423	19	613	--	31	--	--	13	353	--	19	11	47	13	17	--	--	149	31	43	127	1433	--	61	13	11	--	19	263	17	13	--	47	--	1429	--	11	83	--	43	--	29	13			
3	97	541	191	31	--	31	59	--	--	1653	13	--	61	43	--	11	31	983	293	1997	--	--	11	297	170	127	2137	71	23	--	947	83	67	857	113	29	181	29	181	29	181	29	181	29	181	29	181	29	181		
4	--	--	29	23	103	37	13	47	43	17	--	193	11	--	23	59	17	61	--	--	--	13	19	41	859	11	--	13	--	1511	17	--	--	13	53	29	--	23	11	53	37	--	17	11	863	241	--	229	23	--	163
5	223	1931	11	1171	953	331	2089	17	73	809	--	13	379	53	41	149	1187	13	11	19	--	1231	11	--	--	61	181	--	19	--	67	--	--	41	29	13	--	97	11	1453	--	37	--	2003	--	--	19	443	70		
6	11	83	2039	433	13	11	89	127	--	43	37	--	23	17	53	11	13	1553	47	199	11	13	19	1789	1069	--	29	--	17	31	--	19	1201	13	227	79	1913	53	2297	47	41	--	--	23	31	--	11	--			
7	--	11	--	213	283	1091	--	--	--	13	2801	17	--	109	--	23	--	211	43	--	--	1129	31	--	67	11	101	97	--	61	13	--	71	11	--	47	79	1557	281	31	13	--	977	11	1040	29	1657	13	61		
8	3	97	213	17	--	19	--	--	--	67	11	57	19	59	129	13	71	727	--	--	601	11	--	101	13	211	--	23	41	--	13	19	--	29	521	--	43	2551	--	379	2017	--	43	11	2411	--	--	29			
9	79	--	13	--	--	419	11	2293	17	--	13	2767	23	--	11	31	2767	23	--	72	19	--	1087	11	--	--	--	839	163	--	13	--	--	--	193	--	--	13	--	103	--	--	23	11	593	--	--	467			
10	10	17	13	1303	37	11	739	--	--	13	11	113	263	--	19	43	2687	179	--	--	89	97	13	19	--	11	1447	--	--	--	--	17	337	29	2243	11	2459	--	--	13	107	11	23	2003	--	--	1079	13	--	103	149
11	19	31	59	--	431	43	11	41	--	449	163	89	197	113	13	61	53	11	223	139	--	--	17	409	37	23	43	13	--	17	--	11	829	--	--	17	47	--	167	--	107	1783	313	--	13	347	31	17	257		
12	67	1279	29	11	19	17	--	2309	701	37	--	823	--	13	11	41	29	53	83	11	2983	457	61	2477	587	--	547	797	11	1861	13	--	947	11	139	43	13	--	--	23	53	--	29	103	11	--	2357	19			
13	--	61	17	47	1831	--	13	19	1879	227	277	37	67	--	601	11	--	101	13	211	--	--	607	11	13	--	13	19	--	37	--	--	31	19	71	--	--	1873	613	--	11	13	--	--	23	--	29				
14	31	17	--	19	97	--	13	11	1213	--	61	29	--	11	173	157	101	--	--	17	--	71	--	--	607	11	13	--	13	19	--	23	677	19	31	--	--	88	--	23	11	29	--	17	31	11	593	--	59		
15	13	41	769	--	1259	131	--	--	137	67	43	11	13	--	--	733	1109	17	13	--	--	673	89	31	--	17	659	11	151	73	13	29	1423	--	19	37	11	31	19	--	127	11	163	19	--	257	97	--	13		
16	16	1093	--	11	379	761	23	--	--	1297	1163	29	41	19	--	1627	17	2341	2707	11	--	37	691	11	13	--	--	--	--	--	--	--	31	59	1823	--	--	37	11	17	349	--	13	53	241	107	--	73			
17	17	11	911	--	337	--	11	2531	739	--	23	101	31	79	17	11	19	709	293	41	11	919	13	--	--	--	--	--	--	--	--	43	--	--	61	331	67	17	1031	59	313	13	23	283	83	177	17	11	2423		
18	89	11	19	23	149	373	29	251	41	--	2281	13	--	--	61	--	2579	13	1237	439	17	47	43	1061	541	23	37	11	19	--	--	11	97	13	17	--	103	157	--	89	179	11	17	--	907	--	--	11			
19	34	--	53	167	73	13	599	19	23	13	881	1811	--	--	31	43	461	--	--	17	--	71	--	--	607	11	13	--	13	19	--	23	677	19	31	--	--	88	--	23	11	29	--	17	31	11	593	--	59		
20	--	--	19	823	13	--	101	--	--	827	13	503	11	83	79	--	1543	29	389	137	53	11	1667	23	71	41	251	13	809	29	37	127	631	23	--	193	11	31	313	13	17	2251	--	--	41	2399	43	13	107		
21	37	677	--	--	11	419	19	23	17	11	--	367	191	1373	--	13	17	43	--	--	89	--	211	97	--	--	--	--	--	--	--	67	--	17	19	37	11	--	61	79	23	11	227	19	--	653	383	13	1499	23	
22	29	271	13	41	1481	--	11	17	2753	727	--	19	--	29	--	--	--	1189	--	--	--	1889	--	--	23	1997	47	197	--	71	43	1097	--	83	11	13	--	103	263	--	17	13	443	67	31	--	--	1039	47	19	
23	137	13	1319	11	89	29	--	13	--	233	2857	41	17	11	1013	23	--	1069	11	13	--	883	19	--	--	--	61	--	--	--	11	163	523	29	2391	11	1657	31	23	13	43	37	19	--	71	--	11	29	73		
24	24	--	--	--	389	--	11	13	--	389	727	11	13	--	11	13	--	11	13	--	11	13	--	11	13	--	11	13	--	11	13	--	11	13	--	11	13	--	11	13	--	11	13	--	11	13	--	11	13	--	11
25	--	--	--	--	23	59	347	11	--	41	17	203	11	719	29	73	199	--	--	1103	233	1471	19	11	1399	31	--	--	--	839	47	13	19	1399	11	--	23	13	--	--	11	173	43	--	--	11	71	37	1697	643	
26	--	--	--	--	107	31	307	13	227	17	19	11	--	157	37	--	131	41	13	29	421	53	--	--	--	--	--	--	--	--	--	--	--	--	--	--	--	--	--	--	--	--	--	--	--	--	--	--			
27	17	--	--	--	19	13	--	--	--	--	29	23	19	67	--	37	11	83	73	--	--	11	17	13	2087	--	907	--	103	17	1607	--	251	23	683	157	11	29	757	971	47	1049	--	--	59	23	13	71			
28	11	37	--	29	2021	11	17	--	34	19	857	137	13	163	2153	11	227	--	--	13	--	--	11	17	59	--	--	--	--	--	--	--	--	--	--	--	--	--	--	--	--	--	--	--	--	--	--	--			
29	54	107	--	--	1067	133	--	--	1067	133	--	--	--	--	--	--	--	--	--	--	--	261	--	--	--	--	--	--	--	--	--	--	--	--	--	--	--	--	--	--	--	--	--	--	--	--	--	--			
30	19	--	--	--	17	--	--	13	1609	--	--	41	--	--	--	127	23	--	--	--	--	13	61	67	11																										

Lehmer's table of factors (1909) (reconstruction, D. Roegel, 2011)

Table with columns for numbers (81-100) and rows for factors (1-100). Each cell contains a list of prime factors for that number.

Lehmer's table of factors (1909) (reconstruction, D. Roegel, 2011)

Table with columns for numbers 8211 to 9917 and rows for factors. Each cell contains a list of prime factors for that number, separated by spaces. The table is organized into groups of 10 numbers per row, with the first number of the group in the leftmost column and the last number in the rightmost column.



Lehmer's table of factors (1909) (reconstruction, D. Roegel, 2011)

Table with columns for numbers and their prime factors, organized in rows and columns. The table contains numerical data for the range 8232 to 9923.



Lehmer's table of factors (1909) (reconstruction, D. Roegel, 2011)

Table with columns for numbers and their prime factors, organized in rows and columns. The table contains numerical data for the range 8274 to 99109.

Lehmer's table of factors (1909) (reconstruction, D. Roegel, 2011)

Table with columns for numbers (825-99) and rows for factors (1-37). Each cell contains a number or a dash, representing the factorization of the number in the column by the factor in the row.

Lehmer's table of factors (1909) (reconstruction, D. Roegel, 2011)

Table with columns for numbers and their prime factors, organized in groups of 10 rows. Each row contains a number and its prime factors in a specific order.

Lehmer's table of factors (1909) (reconstruction, D. Roegel, 2011)

Table with columns for numbers and their prime factors. The table is organized into rows, with the first column indicating the number and subsequent columns listing its prime factors. The numbers range from 83,337 to 99,139.

Lehmer's table of factors (1909) (reconstruction, D. Roegel, 2011)

Table with columns for numbers and their prime factors, organized in rows of 10 numbers each. The table contains factorizations for numbers from 83,580 to 99,941.

Lehmer's table of factors (1909) (reconstruction, D. Roegel, 2011)

Table with columns for numbers and their prime factors. The table is organized into rows, each representing a range of numbers. Each cell contains a list of prime factors for that number, separated by spaces. The numbers are arranged in ascending order within each row.



Lehmer's table of factors (1909) (reconstruction, D. Roegel, 2011)

Table with 40 columns and 40 rows of numerical data, representing Lehmer's table of factors for the range 8,400,000 to 8,421,000.

Lehmer's table of factors (1909) (reconstruction, D. Roegel, 2011)

Table with 40 rows and 100 columns of numerical data, representing Lehmer's table of factors for numbers 8421000 to 8442000.

Lehmer's table of factors (1909) (reconstruction, D. Roegel, 2011)

Table with columns for numbers and their prime factors, organized in rows and columns. The table contains numerical data for the range 8442 to 9957.

Lehmer's table of factors (1909) (reconstruction, D. Roegel, 2011)

Table with columns for numbers and their prime factors, organized in rows and columns. The table contains numerical data for the range 8483 to 9929.

Lehmer's table of factors (1909) (reconstruction, D. Roegel, 2011)

Table with columns for numbers (404-99) and rows for factors (0-99). Each cell contains a list of prime factors for that number, separated by spaces. The table is a grid of 100 columns and 100 rows.

Lehmer's table of factors (1909) (reconstruction, D. Roegel, 2011)

Table with columns for numbers (805-99) and rows for factors (05-25). Each cell contains a list of prime factors for that number.

Lehmer's table of factors (1909) (reconstruction, D. Roegel, 2011)

Table with 20 columns (numbered 1-20) and 100 rows (numbered 1-100). Each row contains 20 numerical entries representing factors. The table is a reconstruction of Lehmer's 1909 work on prime factors.

Lehmer's table of factors (1909) (reconstruction, D. Roegel, 2011)

Table with columns for numbers and their prime factors, organized in rows and columns. The table contains numerical data for the range 8547 to 9973.



Lehmer's table of factors (1909) (reconstruction, D. Roegel, 2011)

Table with columns for numbers and their prime factors, organized in rows and columns.



Lehmer's table of factors (1909) (reconstruction, D. Roegel, 2011)

Table with columns for numbers 8600-8610 and rows for factors 1-209. Each cell contains a number representing a factor or its frequency.

Lehmer's table of factors (1909) (reconstruction, D. Roegel, 2011)

Table with columns for numbers and their prime factors, organized in rows of 10 numbers each. The numbers range from 8631 to 9999. Factors are listed in columns, with some numbers having multiple factors.

Lehmer's table of factors (1909) (reconstruction, D. Roegel, 2011)

Table with columns for numbers 412-99 and rows for factors 1-99. Each cell contains a small table of factors for that number.

Lehmer's table of factors (1909) (reconstruction, D. Roegel, 2011)

Table with columns for numbers 86-93 and rows for factors 1-209. Each cell contains a digit representing a factor or zero.

Lehmer's table of factors (1909) (reconstruction, D. Roegel, 2011)

A large table with 10 columns and 200 rows, containing numerical data for Lehmer's table of factors (1909) reconstruction by D. Roegel in 2011. The table lists various numbers and their corresponding factors.

Lehmer's table of factors (1909) (reconstruction, D. Roegel, 2011)

Table with columns for numbers (e.g., 87, 85, 16, 17, 18, 19, 20, 21, 22, 23, 24, 25, 26, 27, 28, 29, 30, 31, 32, 33, 34, 35) and rows of numerical data representing factors and their frequencies.



Lehmer's table of factors (1909) (reconstruction, D. Roegel, 2011)

Table with columns for numbers and their prime factors. The table is organized into rows, each representing a range of numbers. Each row contains a sequence of numbers and their corresponding prime factors, with some numbers having multiple factors listed. The table is a reconstruction of Lehmer's 1909 work on factoring numbers.

Lehmer's table of factors (1909) (reconstruction, D. Roegel, 2011)

Table with columns for numbers and their prime factors. The table is organized into rows, each representing a range of numbers. Each row contains a sequence of numbers and their corresponding prime factors, with some numbers having multiple factors listed.

Lehmer's table of factors (1909) (reconstruction, D. Roegel, 2011)

Table with columns for numbers and their prime factors, organized in rows and columns. The table contains numerical data for the range 8778 to 9959.

Lehmer's table of factors (1909) (reconstruction, D. Roegel, 2011)

Table with columns for factor ranges (e.g., 87-89, 88-90) and rows of numerical data representing factorizations and other mathematical values.

Lehmer's table of factors (1909) (reconstruction, D. Roegel, 2011)

Table with columns numbered 1 to 209 and rows numbered 20 to 40. Each cell contains a sequence of integers representing factors for a specific number in the range 8 820 000 to 8 841 000.

Lehmer's table of factors (1909) (reconstruction, D. Roegel, 2011)

Table with columns for numbers and their prime factors, organized in rows of 20 numbers each. The numbers range from 88,411 to 99,299. Factors are listed in columns, with some numbers having multiple factors in a single column.

Lehmer's table of factors (1909) (reconstruction, D. Roegel, 2011)

Table with columns for numbers 88-99 and rows for factors 1-100. Each cell contains a small table of numbers representing factors and their multiplicities.

Lehmer's table of factors (1909) (reconstruction, D. Roegel, 2011)

Table with columns for numbers and their prime factors. The table is organized into rows, each starting with a number (e.g., 88 83, 84, 85, etc.) and followed by a list of prime factors. The factors are listed in a specific order, often including small primes like 2, 3, 5, 7, 11, 13, 17, 19, 23, 29, 31, 37, 41, 43, 47, 53, 59, 61, 67, 71, 73, 79, 83, 89, 97, 101, 103, 107, 109, 113, 127, 131, 137, 139, 143, 149, 151, 157, 163, 167, 169, 173, 179, 181, 187, 191, 193, 197, 199, 209.



Lehmer's table of factors (1909) (reconstruction, D. Roegel, 2011)

Table with columns for numbers and their prime factors, organized in rows and columns. The table contains numerical data for the range 8,904,000 to 8,925,000.

Lehmer's table of factors (1909) (reconstruction, D. Roegel, 2011)

Table with columns for numbers 825 to 999 and rows for factors 1 to 49. Each cell contains a digit representing a factor or zero.

Lehmer's table of factors (1909) (reconstruction, D. Roegel, 2011)

Table with columns for numbers and their prime factors. The table is organized into rows, with the first column indicating the number and subsequent columns listing its prime factors. The numbers range from 8946 to 99857.

Lehmer's table of factors (1909) (reconstruction, D. Roegel, 2011)

Table with columns for numbers and their prime factors, organized in rows and columns. The table contains numerical data for the range 8967 to 8999.

Lehmer's table of factors (1909) (reconstruction, D. Roegel, 2011)

Table with 40 columns (numbered 01 to 40) and 100 rows (numbered 80 to 99). Each cell contains integers representing factors of numbers in the range 8988000-9009000.

Lehmer's table of factors (1909) (reconstruction, D. Roegel, 2011)

Table with 100 rows and 100 columns of numerical data, representing Lehmer's table of factors for numbers 909000 to 909999. Each row contains 100 numbers, and each column contains 100 numbers, forming a 100x100 grid of integers.

Lehmer's table of factors (1909) (reconstruction, D. Roegel, 2011)

Table with columns for numbers and their prime factors. The table is organized into rows, with the first column indicating the number and subsequent columns listing its prime factors. The numbers range from 9030 to 9999.

Lehmer's table of factors (1909) (reconstruction, D. Roegel, 2011)

Table with columns for numbers 9051-9052 and rows for factors 1-100. Each cell contains a digit representing a factor's presence in the number's prime factorization.



Lehmer's table of factors (1909) (reconstruction, D. Roegel, 2011)

Table with columns for numbers 9072 to 9099 and rows for factors 1 to 100. Each cell contains a digit representing the factor's presence in the number's prime factorization.

Lehmer's table of factors (1909) (reconstruction, D. Roegel, 2011)

Table with columns for numbers and their prime factors. The table is organized into rows and columns, with numbers listed on the left and their corresponding prime factors on the right. The numbers range from 9093 to 9999. The factors are listed in a grid-like format, with some numbers having multiple columns of factors.

Lehmer's table of factors (1909) (reconstruction, D. Roegel, 2011)

Table with columns for numbers and their prime factors, organized in rows and columns.

Lehmer's table of factors (1909) (reconstruction, D. Roegel, 2011)

Table with columns for numbers and their prime factors. The table is organized into rows, each representing a range of numbers. Each row contains a sequence of numbers and their corresponding prime factors, with some numbers having multiple factors listed.

Lehmer's table of factors (1909) (reconstruction, D. Roegel, 2011)

Table with columns for numbers 436-919 and rows for factors. Each cell contains a list of prime factors for that number, separated by spaces. The table is organized into groups of 10 rows, with the first row of each group containing the numbers and the subsequent rows containing the factors.

Lehmer's table of factors (1909) (reconstruction, D. Roegel, 2011)

Table with 40 columns and 100 rows of numerical data, representing Lehmer's table of factors for the range 9 177 000 to 9 198 000.

Lehmer's table of factors (1909) (reconstruction, D. Roegel, 2011)

Table with columns for numbers and their prime factors, organized in groups of 10 rows. Each row contains a number and its prime factorization.

Lehmer's table of factors (1909) (reconstruction, D. Roegel, 2011)

Table with columns for numbers 439-919 and rows for factors 1-37. Each cell contains a number or a dash, representing the factorization of the number in the first column by the factor in the second column.



Lehmer's table of factors (1909) (reconstruction, D. Roegel, 2011)

Table with columns for numbers and their prime factors. The table is organized into rows, with each row representing a range of numbers. The columns contain the prime factors of each number in that range. The numbers are listed in the first column of each row, and the factors are listed in the subsequent columns.

Lehmer's table of factors (1909) (reconstruction, D. Roegel, 2011)

Table with columns for numbers 92-99 and rows for factors 1-100. Each cell contains a digit representing the factor's presence in the number's prime factorization.

Lehmer's table of factors (1909) (reconstruction, D. Roegel, 2011)

Table with columns for numbers and their prime factors, organized in rows and columns.

Lehmer's table of factors (1909) (reconstruction, D. Roegel, 2011)

Table with columns for numbers and their prime factors, organized in rows and columns. The table contains numerical data for the range 9 303 000 to 9 324 000.

Lehmer's table of factors (1909) (reconstruction, D. Roegel, 2011)

Table with columns for numbers and their prime factors, organized in rows and columns. The table contains numerical data for the range 9,324,000 to 9,345,000.

Lehmer's table of factors (1909) (reconstruction, D. Roegel, 2011)

Table with columns for numbers and their prime factors, organized in rows and columns.

Lehmer's table of factors (1909) (reconstruction, D. Roegel, 2011)

Table with columns for numbers and their prime factors, organized in rows and columns. The table contains numerical data for the range 9366 to 9387.

Lehmer's table of factors (1909) (reconstruction, D. Roegel, 2011)

Table with columns for numbers and their prime factors, organized in rows and columns.



Lehmer's table of factors (1909) (reconstruction, D. Roegel, 2011)

Table with 40 columns and 1000 rows of numerical data, representing Lehmer's table of factors. The table is organized into groups of 10 rows, labeled 09 through 28 on the left side. Each row contains 40 numerical values, some of which are negative, representing the factors of numbers in the range 9,408,000 to 9,429,000.

Lehmer's table of factors (1909) (reconstruction, D. Roegel, 2011)

Table with columns for numbers and their prime factors. The table is organized into rows, each representing a range of numbers. Each row contains the number followed by its prime factors in ascending order. For example, the first row shows 449-451 with factors 449, 451, and 451. The table continues up to 99-101.

Lehmer's table of factors (1909) (reconstruction, D. Roegel, 2011)

Table with columns for numbers and their prime factors, organized in rows and columns.

Lehmer's table of factors (1909) (reconstruction, D. Roegel, 2011)

Table with columns for numbers and their prime factors. The table is organized into rows, each representing a range of numbers. Each row contains a sequence of numbers and their corresponding prime factors, with some numbers having multiple factors listed. The table is a reconstruction of Lehmer's 1909 work on factoring numbers.

Lehmer's table of factors (1909) (reconstruction, D. Roegel, 2011)

Table with columns for numbers and their prime factors, organized in rows and columns. The table contains numerical data for the range 9 492 000 to 9 513 000.

Lehmer's table of factors (1909) (reconstruction, D. Roegel, 2011)

Table with columns for numbers and their prime factors, organized in rows of 10 numbers each. The table covers the range from 9513 to 99237.

Lehmer's table of factors (1909) (reconstruction, D. Roegel, 2011)

Table with columns for numbers and their prime factors. The table is organized into rows, with the first column indicating the number and subsequent columns listing its prime factors. The numbers range from 95,340 to 99,975. The factors are listed in ascending order for each number.

Lehmer's table of factors (1909) (reconstruction, D. Roegel, 2011)

Table with columns for numbers and their prime factors, organized in rows and columns.



Lehmer's table of factors (1909) (reconstruction, D. Roegel, 2011)

Table with columns for numbers and their prime factors. The table is organized into rows, each representing a range of numbers. Each row contains a sequence of numbers and their corresponding prime factors, with some numbers having multiple factors listed. The table is a reconstruction of Lehmer's original work on factoring numbers in the range 9,576,000 to 9,597,000.

Lehmer's table of factors (1909) (reconstruction, D. Roegel, 2011)

Table with columns for numbers and their prime factors, organized in rows and columns. The table contains numerical data for the range 9 597 000 to 9 618 000.

Lehmer's table of factors (1909) (reconstruction, D. Roegel, 2011)

Table with columns for numbers and their prime factors, organized in rows of 10 numbers each. The table covers the range from 9618 to 99359.

Lehmer's table of factors (1909) (reconstruction, D. Roegel, 2011)

Table with columns for numbers and their prime factors, organized in rows and columns. The table contains numerical data for the range 9 639 000 to 9 660 000.

Lehmer's table of factors (1909) (reconstruction, D. Roegel, 2011)

Table with 40 columns and 100 rows of numerical data, representing Lehmer's table of factors for numbers 9600 to 9937.

Lehmer's table of factors (1909) (reconstruction, D. Roegel, 2011)

Table with 100 columns and 100 rows of numerical data, representing Lehmer's table of factors for numbers 9 681 000 to 9 702 000. Each row contains a sequence of numbers representing factors and their multiplicities.

Lehmer's table of factors (1909) (reconstruction, D. Roegel, 2011)

Table with columns for factor ranges (e.g., 402-411, 11-13, 17-19) and rows for numbers (e.g., 97-02, 03, 04, 05, 06, 07, 08, 09, 10, 11, 12, 13, 14, 15, 16, 17, 18, 19, 20, 21, 22). Each cell contains a list of prime factors for that number.

Lehmer's table of factors (1909) (reconstruction, D. Roegel, 2011)

Table with columns for numbers and their prime factors. The table is organized into rows, with the first column indicating the number and subsequent columns listing its prime factors. The numbers range from 9723 to 9799. The factors are listed in ascending order for each number.



Lehmer's table of factors (1909) (reconstruction, D. Roegel, 2011)

Table with columns for numbers and their prime factors. Each row represents a number and its decomposition into prime factors. The table covers the range from 9744 to 99829.

Lehmer's table of factors (1909) (reconstruction, D. Roegel, 2011)

Table with columns for numbers and their prime factors, organized in rows and columns. The table contains numerical data for the range 9765 to 9786.

Lehmer's table of factors (1909) (reconstruction, D. Roegel, 2011)

Table with columns for numbers (e.g., 866, 87, 88, 89, 90, 91, 92, 93, 94, 95, 96, 97, 98, 99) and rows of factor data. Each row contains a sequence of numbers representing factors or related values for that specific number.

Lehmer's table of factors (1909) (reconstruction, D. Roegel, 2011)

Table with columns for numbers and their prime factors. The table is organized into rows, each representing a range of numbers. Each row contains a sequence of numbers and their corresponding prime factors, with some numbers having multiple factors listed. The table is a reconstruction of Lehmer's 1909 work on factoring numbers.

Lehmer's table of factors (1909) (reconstruction, D. Roegel, 2011)

Table with columns for numbers and their prime factors. The table is organized into rows, with the first column indicating the number and subsequent columns listing its prime factors. The numbers range from 9828 to 9999.

Lehmer's table of factors (1909) (reconstruction, D. Roegel, 2011)

Table with columns for numbers (e.g., 469, 470, 471) and their prime factors (e.g., 11, 13, 17, 19, 23, 29, 31, 37, 41, 43, 47, 53, 59, 67, 71, 73, 79, 83, 89, 97, 101, 103, 107, 109, 113, 121, 127, 131, 137, 139, 143, 149, 151, 157, 163, 167, 169, 173, 179, 181, 187, 191, 193, 197, 199, 209).

Lehmer's table of factors (1909) (reconstruction, D. Roegel, 2011)

Table with columns for numbers and their prime factors, organized in rows and columns. The table contains numerical data for the range 9870 to 9999.

Lehmer's table of factors (1909) (reconstruction, D. Roegel, 2011)

Table with columns for numbers and their prime factors, organized in rows and columns. The table contains numerical data for the range 9891 to 9999.



Lehmer's table of factors (1909) (reconstruction, D. Roegel, 2011)

Table with 100 rows and 100 columns of numerical data, representing Lehmer's table of factors for numbers 9 912 000 to 9 933 000. Each row contains a sequence of numbers, with some cells containing multiple values separated by spaces.

Lehmer's table of factors (1909) (reconstruction, D. Roegel, 2011)

Table with columns for numbers and their prime factors, organized in rows and columns.

Lehmer's table of factors (1909) (reconstruction, D. Roegel, 2011)

Table with columns for numbers and their prime factors. The table is organized into rows, each representing a range of numbers. Each row contains a sequence of numbers and their corresponding prime factors, with some numbers having multiple factors listed.

Lehmer's table of factors (1909) (reconstruction, D. Roegel, 2011)

Table with 40 columns and 100 rows of numerical data, representing Lehmer's table of factors for numbers between 9,975,000 and 9,996,000.

Lehmer's table of factors (1909) (reconstruction, D. Roegel, 2011)

Table with columns for numbers and their prime factors, organized in rows and columns. The table contains numerical data for the range 996000 to 10017000.

Lehmer's table of factors (1909) (reconstruction, D. Roegel, 2011)

Table with columns for numbers and their prime factors. The table is organized into rows, with the first column indicating the number and subsequent columns listing its prime factors. The numbers range from 10017 to 10038000.