



**HAL**  
open science

## A reconstruction of Lehmer's table of factors (1909)

Denis Roegel

► **To cite this version:**

Denis Roegel. A reconstruction of Lehmer's table of factors (1909). [Research Report] 2011. hal-00654442

**HAL Id: hal-00654442**

**<https://inria.hal.science/hal-00654442>**

Submitted on 21 Dec 2011

**HAL** is a multi-disciplinary open access archive for the deposit and dissemination of scientific research documents, whether they are published or not. The documents may come from teaching and research institutions in France or abroad, or from public or private research centers.

L'archive ouverte pluridisciplinaire **HAL**, est destinée au dépôt et à la diffusion de documents scientifiques de niveau recherche, publiés ou non, émanant des établissements d'enseignement et de recherche français ou étrangers, des laboratoires publics ou privés.

A reconstruction of  
Lehmer's table of factors  
(1909)

Denis Roegel

9 October 2011





## 1 Lehmer (1867–1938)

Derrick Norman Lehmer was born in 1867 and obtained his PhD in mathematics in 1900. He was then appointed as an instructor at the University of California at Berkeley. He was promoted professor at Berkeley in 1918 and taught there until he retired in 1937.

Lehmer became interested in prime numbers and factors very early and he published his table of factors in 1909 and his table of primes in 1914. In 1917, he also published a textbook on projective geometry.

During the 1920s, Lehmer worked with his son Derrick Henry Lehmer (1905–1991) on factor stencils, for factoring numbers using cards with punched holes. These factor stencils were announced in 1929 by Lehmer. He later came up with mechanical devices to factor numbers.

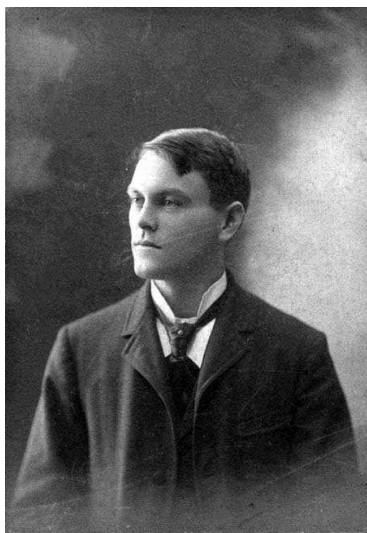


Figure 1: D. N. Lehmer in 1899. (courtesy Ronald Lehmer)

## 2 Lehmer’s table of factors (1909)

Lehmer’s table of factors [27] was probably the first published table giving the smallest factors for all integers non divisible by 2, 3, 5, and 7 up to 10 017 000. It was therefore consolidating the efforts of Felkel [14, 15, 16, 17], Chernac [9], Burckhardt [8, 5, 6], Crelle, Dase [10, 11, 12], Kulik [25], Glaisher [18, 19, 20], and a few others.

### 2.1 Structure

The table of factors occupies 477 pages, numbered 0 to 476, and covering a range of 21000 values each, so that the table goes from 1 to  $21000 \times 477 = 10\,017\,000$ . Each page has 48 columns numbered 1, 11, 13, 17, 19, 23, 29, 31, 37, 41, 43, 47, 53, 59, 61, 67, 71, 73, 79, 83, 89, 97, 101, 103, 107, 109, 113, 121, 127, 131, 137, 139, 143, 149, 151, 157, 163, 167, 169, 173, 179, 181, 187, 191, 193, 197, 199, and 209, which are all numbers from

1 to  $209 = 210 - 1 = 2 \times 3 \times 5 \times 7 - 1$  not divisible by 2, 3, 5, and 7. The lines are numbered from 0 to 99, so that the cell at the intersection of column  $c$  and line  $l$  on page  $p$  corresponds to number  $p \times 21000 + l \times 210 + c$ . For instance, on the first page ( $p = 0$ ), at the intersection of line number 4 and column number 1, we find the value 29. This value corresponds to the number  $4 \times 210 + 1 = 841$ , and it is the smallest factor of  $841 = 29^2$ . Each line therefore corresponds to an interval of 210 integers. When a number is prime, the content of the cell is filled with dashes.<sup>1</sup>

In the column at the left of each page are found two numbers. The leftmost number is the number of hundreds of thousands, and the one to its right is the number of thousands. On the last page of the table (page 476), these two numbers are 99 and 96, a value which is also indicated at the top of the table (9 996 000). We can therefore see immediately that 9 996 001 is prime, that  $9\,996\,000 + 2 \times 210 + 11 = 9\,996\,431$  has 337 for its smallest factor, and so on.

A number  $n$  can be located in the table if we write it in the form  $a \times 21000 + b \times 210 + c$ , and it then suffices to go on page  $a$ , and check the value in the cell for line number  $b$  and column number  $c$ . Another possibility is to write  $n = 210 \times Q + R$  and  $Q$  is then equal to  $100a + b$ , where  $a$  and  $b$  are obtained at sight. But since this is all somewhat cumbersome, Lehmer provided an auxiliary table.

## 2.2 Auxiliary table

This auxiliary table is printed in the introduction, but several free sheets were also provided so that they could be used easily on any page.<sup>2</sup>

The table is used as follows, as explained by Lehmer in his introduction to the table [27]. We assume that a 7-digit number  $abcdefg$  has to be located in the main table, where the leftmost digits may be equal to 0.

The digits  $ab$  are found in the first column on each page. The next digits  $cd$  are found in the second column. For instance, for 3 772 921, 37 is found in the first column of page 179 and 72 in the second column on line 62 of that page.

The line on which the value  $cd$  occurs also occurs in the auxiliary table. So, we consider the number 62 in the first column of the auxiliary table. This number belongs to a compartment which covers two cells of line 61, the whole lines 62 to 65, and part of line 66. The numbers written in this area are 00 to 99 and one must look for the value  $ef$ , in this case for 92. This value  $ef$  occurs on line 66 of the auxiliary table. The cell corresponding to the number therefore occurs on line 66.

At the top of the column containing 92 are the values 61 and 67. Since the initial number ends with 1, we choose the value 61 in the heading. This is the column number. So, the cell sought is the one at line 66 and column 61 of page 179, and this cell contains the factor 677. Therefore, the smallest factor of 3 772 921 is 677.

The auxiliary table is meant to locate numbers which are in the main table, and will not work for numbers which are divisible by 2, 3, 5, or 7. If one attempts to use it with

---

<sup>1</sup>As observed by Lehmer [27, p. VIII], Lebesgue used a similar layout for his table of divisors to 115500 published in 1864 [26]. Lebesgue split the 48 columns in two parts, with 24 columns per page. He also used symbols as prefixes for some primes, in a way similar to the one employed by Kulik in 1825 [24].

<sup>2</sup>In the copy that we consulted, there were no less than four such sheets.

such a number, the process will block, and this will then hint to the divisibility by 2, 3, 5, or 7.

## 2.3 Kulik's tables

During the preparation of his table of factors, Lehmer used the tables of Burckhardt, Dase, and Glaisher, and he had planned to compare his manuscript with the 10th million computed by Dase and Rosenberg. Unfortunately, this 10th million seemed to have vanished and could not be found at the Academy of sciences in Berlin [27, p. VIII]. Lehmer's attention was then drawn to Kulik's tables and he contacted the Academy of sciences in Vienna in order to be able to consult Kulik's manuscript [25]. Lehmer eventually was able to get several volumes of Kulik's work sent to the United States, and he did a thorough analysis of Kulik's first volume.<sup>3</sup> Lehmer published descriptions of Kulik's tables in the introductions of his tables of factors [27] and of primes [28].

## 2.4 Erratas

In the introduction of his table, Lehmer gives erratas for the tables of Burckhardt, Dase, Glaisher, and Kulik.

## 2.5 The printing of the table

The table was first in manuscript form, then typewritten. These pages were then photographed, and finally transferred on zinc plates. The photographs were used for proof-readings, and some errors were corrected on the zinc plates. This procedure avoided the risk of accidental type misplacement during the printing process.

## 3 Lehmer's table of primes (1914)

In 1914, Lehmer published what is basically a subset of his table of factors, namely a table of all primes over a slightly smaller interval, namely from 1 to 10 006 721. Although five years elapsed between both tables, the work probably afforded less time and this table was probably planned only late, not at the same time as the table of factors.

## 4 Additional page

In 1949, Jarden and Katz extended Lehmer's table with one page, page number 477, which was also reconstructed here [23]. Lehmer's table, with this additional page, was used by Beeger for his table of the 11th million [3, 2] .

---

<sup>3</sup>For a detailed description of the correspondence between Lehmer and the Academy of sciences in Vienna, see our description of Kulik's tables [44].

477	1	11	13	17	19	23	29	31	37	41	43	47	53	59	61	67	71	73	79	83	89	97	101	103	107	109	113	121	127	131	137	139	143	149	151	157	163	167	169	173	179	187	191	193	197	199	209							
100	17	01	05	07	11	107	11	1021	2203	761	19	53	15	31	157	11	41	181	257	17	67	13	43	23	127	17	13	137	139	143	149	151	157	163	167	169	173	179	187	191	193	197	199	209										
01	547	3163																																																				
03	13	17	197																																																			
04	193	83	11	23	189	73	97	419																																														
16	04	193	83	11	23	189	73	97	419																																													
04	11	23																																																				
07	11	203	31	13	101	839	23	2437																																														
08	13	113	13	43	139	419	67	2923	11																																													
09	23	197	127																																																			
10	04	193	83	11	23	189	73	97	419																																													
19	00	231	997	127																																																		
11	01	547	3163																																																			
12	453	83	11	41	619																																																	
13	43	17	193	11	23	189	73	97	419																																													
14	31	19	29																																																			
15	13	139	11	37	109	53																																																
16	31	19	29																																																			
17	01	547	3163																																																			
18	01	547	3163																																																			
19	01	547	3163																																																			
20	13	139	11	37	109	53																																																
21	01	547	3163																																																			
22	01	547	3163																																																			
23	01	547	3163																																																			
24	01	547	3163																																																			
25	01	547	3163																																																			
26	01	547	3163																																																			
27	01	547	3163																																																			
28	01	547	3163																																																			
29	01	547	3163																																																			
30	01	547	3163																																																			
31	01	547	3163																																																			
32	01	547	3163																																																			
33	01	547	3163																																																			
34	01	547	3163																																																			
35	01	547	3163																																																			
36	01	547	3163																																																			
37	01	547	3163																																																			
38	01	547	3163																																																			
39	01	547	3163																																																			
40	01	547	3163																																																			

Figure 2: The additional page 477 by Jarden and Katz [23].

## References

The following list covers the most important references<sup>4</sup> related to Lehmer's table. Not all items of this list are mentioned in the text, and the sources which have not been seen are marked so. We have added notes about the contents of the articles in certain cases.

- [1] Raymond Clare Archibald. *Mathematical table makers: Portraits, paintings, busts, monuments; bio-bibliographical notes*. New York: Scripta Mathematica, 1948.  
[contains sections on D. N. Lehmer and D. H. Lehmer]
- [2] Nicolaas George Wijnand Henri Beeger. Table of the least factor of the numbers that are not divisible by 2, 3, 5 of the eleventh million (review). *Mathematical Tables and other Aids to Computation*, 10(53):36, 1956.
- [3] Nicolaas George Wijnand Henri Beeger, Albert Gloden, Luigi Poletti, and Robert James Porter. *Liste des nombres premiers du onzième million (plus précisément de 10 006 741 à 10 999 997) d'après les tables manuscrites de J. Ph. Kulik, L. Poletti et R. J. Porter*. Amsterdam: imprimerie WERTO, 1951.  
[reconstructed in [32]]
- [4] Maarten Bullynck. Factor tables 1657–1817, with notes on the birth of number theory. *Revue d'histoire des mathématiques*, 16(2):133–216, 2010.
- [5] Johann Karl Burckhardt. *Table des diviseurs pour tous les nombres du deuxième million, etc.* Paris: Vve Courcier, 1814. [reconstructed in [34]]
- [6] Johann Karl Burckhardt. *Table des diviseurs pour tous les nombres du troisième million, etc.* Paris: Vve Courcier, 1816. [reconstructed in [35]]
- [7] Johann Karl Burckhardt. *Table des diviseurs pour tous les nombres des 1<sup>er</sup>, 2<sup>e</sup> et 3<sup>e</sup> million, etc.* Paris: Vve Courcier, 1817.
- [8] Johann Karl Burckhardt. *Table des diviseurs pour tous les nombres du premier million, etc.* Paris: Vve Courcier, 1817. [reconstructed in [33]]
- [9] Ladislaus Chernac. *Cribrum arithmeticum sive, tabula continens numeros primos, a compositis segregatos, occurrentes in serie numerorum ab unitate progredientium, usque ad decies centena millia, et ultra haec, ad viginti millia (1020000). Numeris compositis, per 2, 3, 5 non dividuis, adscripti sunt divisores simplices, non minimi tantum, sed omnino omnes*. Deventer: J. H. de Lange, 1811. [reconstructed in [36]]

---

<sup>4</sup>**Note on the titles of the works:** Original titles come with many idiosyncrasies and features (line splitting, size, fonts, etc.) which can often not be reproduced in a list of references. It has therefore seemed pointless to capitalize works according to conventions which not only have no relation with the original work, but also do not restore the title entirely. In the following list of references, most title words (except in German) will therefore be left uncapitalized. The names of the authors have also been homogenized and initials expanded, as much as possible.

The reader should keep in mind that this list is not meant as a facsimile of the original works. The original style information could no doubt have been added as a note, but we have not done it here.

- [10] Johann Martin Zacharias Dase. *Factoren-tafeln für alle Zahlen der siebenten Million etc.* Hamburg: Perthes-Besser & Mauke, 1862. [reconstructed in [39]]
- [11] Johann Martin Zacharias Dase. *Factoren-tafeln für alle Zahlen der achten Million etc.* Hamburg: Perthes-Besser & Mauke, 1863. [reconstructed in [37]]
- [12] Johann Martin Zacharias Dase and H. Rosenberg. *Factoren-tafeln für alle Zahlen der neunten Million etc.* Hamburg: Perthes-Besser & Mauke, 1865. [reconstructed in [38]]
- [13] Leonard Eugene Dickson. Review of D. E. Lehmer, *Factor Table for the First Ten Millions*, 1909. *Bulletin of the American Mathematical Society*, 17(1):36–38, 1910.
- [14] Anton Felkel. *Tafel aller einfachen Factoren der durch 2, 3, 5 nicht theilbaren Zahlen von 1 bis 10 000 000. I. Theil. Enthaltend die Factoren von 1 bis 144000.* Wien: von Ehelenschen, 1776. [There is also a Latin edition [15] of this first part.] [reconstructed in [40]]
- [15] Anton Felkel. *Tabula omnium factorum simplicium numerorum per 2, 3, 5 non divisibilium, ab 1 usque 10 000 000. Pars I. Exhibens factores ab 1 usque 144000.* Wien: A. Gheleniana, 1777. [Latin version of [14].] [not seen] [reconstructed in [40]]
- [16] Anton Felkel. *Tabula factorum. Pars II. Exhibens factores numerorum ab 144001 usque 336000.* Wien: A. Gheleniana, 1777? [reconstructed in [40]]
- [17] Anton Felkel. *Tabula factorum. Pars III. Exhibens factores numerorum ab 336001 usque 408000.* Wien: A. Gheleniana, 1777? [reconstructed in [40]]
- [18] James Glaisher. *Factor table for the fourth million etc.* London: Taylor and Francis, 1879. [reconstructed in [42]]
- [19] James Glaisher. *Factor table for the fifth million etc.* London: Taylor and Francis, 1880. [reconstructed in [41]]
- [20] James Glaisher. *Factor table for the sixth million etc.* London: Taylor and Francis, 1883. [reconstructed in [43]]
- [21] James Whitbread Lee Glaisher. *Report of the committee on mathematical tables.* London: Taylor and Francis, 1873. [Also published as part of the “Report of the forty-third meeting of the British Association for the advancement of science,” London: John Murray, 1874. A review by R. Radau was published in the *Bulletin des sciences mathématiques et astronomiques*, volume 11, 1876, pp. 7–27]
- [22] James Whitbread Lee Glaisher. Table, mathematical. In Hugh Chisholm, editor, *The Encyclopædia Britannica, 11th edition*, volume 26, pages 325–336. Cambridge, England: at the University Press, 1911.
- [23] Dov Jarden and Aleksander Katz. Additional page 477 to D. N. Lehmer’s Factor Table. *Riveon Lematematika*, 3(3):49, 1949. [summary on p. 52]

- [24] Jakob Philip Kulik. *Divisores numerorum decies centena millia non excedentium etc. — Tafeln der einfachen Faktoren aller Zahlen unter Einer Million etc.* Graz: Miller, 1825. [reconstructed in [45]]
- [25] Jakob Philipp Kulik. Magnus Canon Divisorum pro omnibus numeris per 2, 3 et 5 non divisibilibus, et numerorum primorum interjacentium ad Millies centena millia accuratius ad 100330201 usque, ca. 1825–1863. [7 manuscript volumes deposited in the Library of the Academy of Sciences, Vienna] [reconstructed in [44]]
- [26] Victor-Amédée Lebesgue. *Tables diverses pour la décomposition des nombres en leurs facteurs premiers.* Paris: Gauthier-Villars, 1864.
- [27] Derrick Norman Lehmer. *Factor table for the first ten millions containing the smallest factor of every number not divisible by 2, 3, 5, or 7 between the limits 0 and 10017000.* Washington, D.C.: Carnegie Institution of Washington, 1909.
- [28] Derrick Norman Lehmer. *List of prime numbers from 1 to 10,006,721.* Washington, D.C.: Carnegie Institution of Washington, 1914. [reconstructed in [46]]
- [29] George Abram Miller. D. N. Lehmer: Factor Tables for the First Ten Millions, etc. (review). *Science*, 32(822):432–433, 1910.
- [30] D. Jarden & A. Katz, “Additional page 477 to D. N. Lehmer’s Factor Table” (census). *Mathematical Tables and other Aids to Computation*, 4(29):29, January 1950.
- [31] D. Jarden & A. Katz, “Additional page (477) to D. N. Lehmer’s Factor Table” (census). *Mathematical Tables and other Aids to Computation*, 4(31):145, July 1950.
- [32] Denis Roegel. A reconstruction of Beeger’s table of primes (1951). Technical report, LORIA, Nancy, 2011. [This is a reconstruction of the table in [3].]
- [33] Denis Roegel. A reconstruction of Burckhardt’s table of factors (first million, 1817). Technical report, LORIA, Nancy, 2011. [This is a reconstruction of the table in [8].]
- [34] Denis Roegel. A reconstruction of Burckhardt’s table of factors (second million, 1814). Technical report, LORIA, Nancy, 2011. [This is a reconstruction of the table in [5].]
- [35] Denis Roegel. A reconstruction of Burckhardt’s table of factors (third million, 1816). Technical report, LORIA, Nancy, 2011. [This is a reconstruction of the table in [6].]
- [36] Denis Roegel. A reconstruction of Chernac’s *Cribrum arithmeticum* (1811). Technical report, LORIA, Nancy, 2011. [This is a reconstruction of [9].]
- [37] Denis Roegel. A reconstruction of Dase’s table of factors (eighth million, 1863). Technical report, LORIA, Nancy, 2011. [This is a reconstruction of the table in [11].]
- [38] Denis Roegel. A reconstruction of Dase’s table of factors (ninth million, 1865). Technical report, LORIA, Nancy, 2011. [This is a reconstruction of the table in [12].]



- [39] Denis Roegel. A reconstruction of Dase’s table of factors (seventh million, 1862). Technical report, LORIA, Nancy, 2011. [This is a reconstruction of the table in [10].]
- [40] Denis Roegel. A reconstruction of Felkel’s tables of primes and factors (1776). Technical report, LORIA, 2011. [This is a reconstruction and an extension of Felkel’s tables [14, 15, 16, 17].]
- [41] Denis Roegel. A reconstruction of Glaisher’s table of factors (fifth million, 1880). Technical report, LORIA, Nancy, 2011. [This is a reconstruction of the table in [19].]
- [42] Denis Roegel. A reconstruction of Glaisher’s table of factors (fourth million, 1879). Technical report, LORIA, Nancy, 2011. [This is a reconstruction of the table in [18].]
- [43] Denis Roegel. A reconstruction of Glaisher’s table of factors (sixth million, 1883). Technical report, LORIA, Nancy, 2011. [This is a reconstruction of the table in [20].]
- [44] Denis Roegel. A reconstruction of Kulik’s “Magnus Canon Divisorum” (ca. 1825–1863): Introduction. Technical report, LORIA, Nancy, 2011. [This is a reconstruction of [25].]
- [45] Denis Roegel. A reconstruction of Kulik’s table of factors (1825). Technical report, LORIA, Nancy, 2011. [This is a reconstruction of [24].]
- [46] Denis Roegel. A reconstruction of Lehmer’s table of primes (1914). Technical report, LORIA, Nancy, 2011. [This is a reconstruction of [28].]
- [47] Paul Peter Heinrich Seelhoff. Geschichte der Factorentafeln. *Archiv der Mathematik und Physik*, 70:413–426, 1884.





## Auxiliary table



## Factor table

Lehmer's table of factors (1909) (reconstruction, D. Roegel, 2011)

Table with 30 rows and 30 columns, containing numerical data. Each row is labeled with a number from 00 to 99 on the left side. The table contains a grid of numbers representing factors.

Lehmer's table of factors (1909) (reconstruction, D. Roegel, 2011)

Table with columns 1-209 and rows 00-41. Each row contains 209 numerical values representing factors. The table is a grid of numbers, with some rows starting with a two-digit identifier (e.g., 00, 22, 23, 24, 25, 26, 27, 28, 29, 30, 31, 32, 33, 34, 35, 36, 37, 38, 39, 40, 41).



Lehmer's table of factors (1909) (reconstruction, D. Roegel, 2011)

Table with columns 00-209 and rows 2-99. Each cell contains a number representing a factor or zero.

Lehmer's table of factors (1909) (reconstruction, D. Roegel, 2011)

Table with columns for numbers and their prime factors. The table is organized into groups of 10 rows, with the first column of each group containing a group number (e.g., 00, 63, 64, 65, 66, 67, 68, 69, 70, 71, 72, 73, 74, 75, 76, 77, 78, 79, 80, 81, 82, 83, 84, 85, 86, 87, 88, 89, 90, 91, 92, 93, 94, 95, 96, 97, 98, 99). Each row contains a number followed by its prime factors in ascending order, separated by spaces. For example, row 00 contains '3 1 11 13 17 19 23 29 31 37 41 43 47 53 59 61 67 71 73 79 83 89 97 101 103 107 109 113 121 127 131 137 139 143 149 151 157 163 167 169 173 179 181 187 191 193 197 199 201 203'.

Lehmer's table of factors (1909) (reconstruction, D. Roegel, 2011)

Table with 4 columns (row index, column index, value, value) containing Lehmer's table of factors for numbers 84,000 to 105,000.



Lehmer's table of factors (1909) (reconstruction, D. Roegel, 2011)

Table with 20 columns (01-20) and 100 rows (26-99). Each cell contains a sequence of integers representing factors of numbers in the range 126000-147000.

Lehmer's table of factors (1909) (reconstruction, D. Roegel, 2011)

Table with columns for numbers 01-99 and rows for factors 1-209. Each cell contains a digit representing a factor or zero.

Lehmer's table of factors (1909) (reconstruction, D. Roegel, 2011)

Table with columns for numbers 168000 to 189000 and rows for factors. Each row contains a list of factors for a specific number, with some numbers having multiple rows of factors.

Lehmer's table of factors (1909) (reconstruction, D. Roegel, 2011)

Table with columns for numbers and their prime factors. The table is organized into rows of 10 numbers each, with the first column indicating the row group (e.g., 01 89, 90, 91, etc.). Each row contains 10 numbers, and each cell contains a list of prime factors for that number, separated by spaces. For example, the first row shows 9, 11, 13, 17, 19, 23, 29, 31, 37, 41, 43, 47, 53, 59, 61, 67, 71, 73, 79, 83, 89, 97, 101, 103, 107, 109, 113, 121, 127, 131, 137, 139, 143, 149, 151, 157, 163, 167, 169, 173, 179, 181, 187, 191, 193, 197, 199, 203, 209.



Lehmer's table of factors (1909) (reconstruction, D. Roegel, 2011)

Table with 30 rows and 30 columns of numerical data, representing Lehmer's table of factors for the range 210,000 to 231,000.

Lehmer's table of factors (1909) (reconstruction, D. Roegel, 2011)

Table with columns for numbers 11-109 and rows for factor sets (e.g., 02 31, 32 5, 33 10, 34 15, 35 20, 36 25, 37 30, 38 35, 39 40, 40 45, 41 50, 42 55, 43 60, 44 65, 45 70, 46 75, 47 80, 48 85, 49 90, 50 95, 51 99). Each cell contains a list of prime factors.

Lehmer's table of factors (1909) (reconstruction, D. Roegel, 2011)

Table with columns for numbers 12 to 209 and rows for factor sets. Each row contains a sequence of numbers representing factors for a specific integer. The table is organized into groups of 10 rows, labeled 02 to 99 on the left side.

Lehmer's table of factors (1909) (reconstruction, D. Roegel, 2011)

Table with columns for numbers 13-29 and rows for factor ranges 02-73, 74-83, 84-93, 94-99. Each cell contains a list of prime factors for that number.

Lehmer's table of factors (1909) (reconstruction, D. Roegel, 2011)

Table with columns for numbers 14-19, 23-31, 37-41, 43-47, 53-59, 61-67, 71-73, 79-83, 89-97, 101-103, 107-109, 113-121, 127-131, 137-139, 143-149, 151-157, 163-167, 169-173, 179-181, 187-191, 193-197, 199-209. Rows represent numbers from 02 94 to 99 433, with each cell containing a digit representing a factor.

Lehmer's table of factors (1909) (reconstruction, D. Roegel, 2011)

Table with columns for numbers 15-309 and rows for factors 1-99. Each cell contains a digit representing a factor or zero. The table is a grid of 99 rows and 309 columns.



Lehmer's table of factors (1909) (reconstruction, D. Roegel, 2011)

Table with columns for numbers 17-19 and rows 03-99, containing numerical factor data for Lehmer's table.





Lehmer's table of factors (1909) (reconstruction, D. Roegel, 2011)

Table with columns for numbers 1909-2009 and rows for factors. The table contains numerical data representing the factors of integers in the range 399,000 to 420,000.

Lehmer's table of factors (1909) (reconstruction, D. Roegel, 2011)

Table with 40 rows and 40 columns of numerical data, representing Lehmer's table of factors for the range 420,000 to 441,000. Each row contains 40 integers, with some cells containing dashes to indicate missing or zero values.

Lehmer's table of factors (1909) (reconstruction, D. Roegel, 2011)

Table with columns for numbers and their prime factors, organized in groups of 10 rows. Each row contains a number and its prime factors in a specific order.

Lehmer's table of factors (1909) (reconstruction, D. Roegel, 2011)

Table with 10 columns (01-10) and 20 rows (22-99). Each cell contains a sequence of numbers representing factors or values for a specific range. The table is a dense grid of numerical data.

Lehmer's table of factors (1909) (reconstruction, D. Roegel, 2011)

Table with 100 columns (numbered 01-100) and 100 rows (numbered 01-100). Each cell contains a sequence of numbers representing factors or values for a specific row and column intersection.



Lehmer's table of factors (1909) (reconstruction, D. Roegel, 2011)

Table with 40 columns and 40 rows of numerical data, representing Lehmer's table of factors for the range 525,000 to 546,000. Each row contains a sequence of numbers, likely representing prime factors or their indices.



Lehmer's table of factors (1909) (reconstruction, D. Roegel, 2011)

Table with 100 columns (numbered 06 to 99) and 100 rows (numbered 06 to 99). Each cell contains a small integer value representing a factor or multiplier in Lehmer's table.

Lehmer's table of factors (1909) (reconstruction, D. Roegel, 2011)

06	67	27	1	11	13	17	19	23	29	31	37	41	43	47	53	59	61	67	71	73	79	83	89	97	101	103	107	109	113	121	127	131	137	139	143	149	151	157	163	167	169	173	179	181	187	191	193	197	199	209											
		0	17	--	--	11	23	617	307	--	29	43	137	13	--	--	11	--	41	13	191	11	223	--	--	--	701	317	--	--	11	19	17	83	--	11	13	23	197	59	19	37	--	--	577	11	89	257	--	--											
		1	2	107	47	23	13	--	--	17	--	--	179	599	--	--	29	353	--	--	11	41	--	--	61	--	--	71	541	31	59	11	--	--	13	97	389	43	29	41	--	--	23	53	557	19	11	13	113	--	--										
		3	5	23	43	17	--	--	--	13	--	--	--	--	--	13	--	--	--	--	31	--	--	41	--	--	19	19	11	41	89	29	--	--	19	11	61	--	--	181	661	83	11	17	23	349	13	--	--												
		4	--	17	11	--	--	209	--	157	--	--	--	503	23	--	--	43	29	151	37	11	101	19	--	--	19	61	353	--	--	19	61	353	--	--	13	383	--	--	677	11	13	31	--	--	23	241	347	--	--										
		68	5	11	13	107	563	--	--	11	373	19	13	--	--	239	--	59	11	379	17	97	--	--	--	17	43	--	--	227	--	--	21	33	--	--	31	--	--	53	13	41	211	59	--	--	13	79	11	17											
		6	23	11	--	47	--	--	37	--	739	359	41	--	--	23	29	53	13	17	43	547	467	263	--	--	--	443	13	51	--	--	209	13	11	131	521	43	19	223	17	--	--	11	13	--	--	103	61	11											
		7	--	--	367	29	431	--	--	19	523	751	701	11	97	--	13	17	19	--	--	199	--	--	569	47	641	31	479	--	--	11	23	541	73	11	13	--	--	19	--	--	139	19	--	--	29	103	11	--											
		8	277	--	691	557	--	--	61	11	659	11	23	23	--	19	11	197	257	47	--	233	607	--	--	50	17	11	71	--	--	13	41	37	--	--	157	15	31	--	--	271	--	--	17	11	43	53	--	--											
		9	--	307	--	--	--	--	11	13	--	139	11	--	--	43	59	31	37	23	--	147	167	17	--	--	19	11	--	--	19	11	--	--	251	--	--	405	47	163	41	11	--	--	239	11	19	--	--	127	23	97									
		69	10	13	--	283	--	--	151	47	11	83	--	--	601	47	11	13	19	--	--	53	37	--	--	13	19	--	--	19	23	--	--	19	23	--	--	13	--	--	13	--	--	23	17	19	--	--	13	79	11	17									
		11	47	--	--	11	149	89	199	127	17	431	79	29	43	--	11	31	17	439	353	11	179	113	19	13	--	--	11	31	13	--	--	11	31	13	--	--	17	521	11	--	37	29	613	--	--	17	211	13	--	--									
		12	383	29	--	239	101	13	23	17	61	107	19	67	--	--	281	11	47	--	--	--	--	--	--	--	13	--	--	149	83	71	23	13	311	11	--	--	19	--	--	19	--	--	17	37	103	13	11	43	--	--									
		13	--	101	109	--	31	19	--	139	11	--	--	13	137	11	19	--	--	61	13	--	--	--	--	--	53	13	17	--	--	19	79	--	--	17	--	--	31	29	13	--	--	11	--	53	37	23	11	61	--	--									
		14	41	367	463	--	13	23	47	167	587	19	--	--	11	17	59	--	--	647	13	--	--	19	41	--	--	13	--	--	13	--	--	19	19	433	13	--	--	439	467	--	211	--	19	19	37	41	211	33	83	19	43	--	--						
		70	15	233	--	--	11	13	29	--	109	--	41	--	--	13	17	73	19	223	--	--	43	11	--	--	23	19	11	--	--	401	419	97	13	487	37	383	61	83	17	79	31	331	11	563	13	--	--	23	163	449	29	101	13	--	--				
		16	11	67	--	23	--	--	11	--	109	13	--	--	--	11	31	41	47	661	11	97	--	--	--	--	17	179	43	--	--	17	179	43	--	--	--	--	--	17	--	--	29	251	--	--	47	--	--	337	--	--	19	--	--						
		17	17	11	13	--	19	523	313	--	23	127	--	--	31	401	151	107	--	--	73	--	--	--	--	--	17	--	--	19	--	--	193	17	197	11	--	--	47	173	--	--	13	--	--	29	101	11	41	113	131	71	11	--	--						
		18	--	13	457	257	37	31	17	283	13	--	--	11	--	109	--	--	--	--	--	--	--	--	--	--	53	13	17	--	--	23	11	--	--	67	11	317	--	--	29	23	19	--	--	59	13	--	--	101	--	--	11	--	53	37	23	11	61	--	--
		19	--	31	47	19	157	17	--	13	443	--	491	--	--	11	19	--	--	293	59	373	--	--	--	--	13	--	--	13	--	--	19	19	13	--	--	19	19	433	13	--	--	439	467	--	211	--	19	19	37	41	211	33	83	19	43	--	--		
		71	20	--	--	29	17	11	--	--	31	11	37	739	41	13	--	--	29	19	--	--	397	83	--	--	11	67	349	--	--	107	109	13	487	37	383	61	83	17	79	31	331	11	563	13	--	--	23	163	449	29	101	13	--	--					
		21	241	17	31	43	139	--	--	11	13	479	277	--	--	691	19	89	--	--	23	11	17	13	41	353	751	43	73	13	17	--	--	521	--	--	31	11	131	101	29	47	23	19	--	--	17	13	--	--	509	31	23	--	--						
		22	71	61	--	11	523	293	13	59	--	47	41	113	--	--	11	37	19	17	--	--	--	--	--	79	13	19	31	--	--	11	--	--	11	--	23	--	--	171	11	43	--	--	83	--	--	29	--	--	577	--	--	11	53	383	17	11	--	--	
		23	13	--	19	--	23	--	193	--	--	--	--	--	--	13	337	197	17	--	--	13	443	19	239	17	--	--	431	--	--	43	157	13	31	11	--	--	67	31	13	433	61	17	89	97	11	439	211	--	--	43	13	--	--						
		72	24	--	19	23	227	--	--	13	37	--	43	31	163	11	--	--	23	631	--	--	--	--	--	17	53	13	31	--	--	59	11	103	13	67	--	--	127	73	--	--	23	11	19	--	--	11	29	--	--	17	211	23	43	--	--				
		25	--	19	23	227	--	--	13	37	--	43	31	163	11	--	--	23	631	--	--	--	--	--	17	53	13	31	--	--	59	11	103	13	67	--	--	127	73	--	--	23	11	19	--	--	11	29	--	--	17	211	23	43	--	--					
		26	--	11	31	--	--	--	41	19	--	--	37	181	13	79	--	--	19	251	13	11	17	--	--	107	11	337	--	--	101	--	--	--	--	--	--	--	19	--	--	13	83	271	11	--	--	19	41	--	--	19	--	--	379	--	--				
		27	11	653	--	--	13	11	--	269	--	--	17	19	23	41	463	11	13	151	--	--	601	11	13	53	419	--	--	29	67	--	--	37	--	--	--	191	--	--	13	--	--	29	691	--	--	17	61	241	23	131	--	--	11	--	--				
		28	--	11	41	13	71	--	--	31	17	199	13	--	--	--	233	17	23	281	--	--	47	421	19	79	103	--	--	11	--	--	29	193	17	11	401	--	--	683	719	--	--	757	13	19	43	11	47	197	263	13	11	--	--						
		73	29	--	313	11	--	--	43	359	--	--	151	11	17	239	23	--	--	449	--	--	37	11	19	193	31	--	--	23	59	17	593	--	--	19	13	109	--	--	11	41	13	--	--	13	389	13	401	11	--	--	587	--	--						
		31	--	13	--	--	11	29	59	47	13	11	19	--	--	17	--	--	43	709	61	181	31	13	103	37	83	11	53	331	17	--	--	283	--	--	29	139	127	11	19	--	--	13	--	--	11	23	--	--	563	113	29	211	--	--					
		32	67	523	17	--	--	--	19	11	71	--	--	--	--	17	439	31	13	--	--	--	--	--	241	29	23	--	--	13	31	--	--	--	--	--	--	19	--	--	17	--	--	647	59	--	--	37	73	127	47	23	--	--							
		33	139	--	467	11	61	--	--	41	89	--	17	--	--	101	13	11	29	541	--	--	19	11	103	31	--	--	251	17	53	--	--	21	13	673	17	11	--	--	317	13	149	--	--	23	--	--	83	383	569	11	--	--	37	89	--	--			
		74	34	17	113	--	--	--	19	11	--	--	173	61	--	--	173	61	--	--	13	67	--	--	37	19	19	--	--	11	39	--	--	159	--	--	15	557	449	--	--	19	71	11	13	353	107	11	--	--	31	743	69	--	--						
		35	19	53	--	--	41	--	--	13	613	11	67	--	--	307	29	11	179	311	127	--	--	13	29	17	41	11	13	397																															

Lehmer's table of factors (1909) (reconstruction, D. Roegel, 2011)

Table with columns for numbers 05-08 and rows for factors 28-99. Each cell contains a number representing a factor or its position in the table.

Lehmer's table of factors (1909) (reconstruction, D. Roegel, 2011)

Table with 20 columns (09-09) and 20 rows (29-99). Each cell contains a sequence of numbers representing factors, with some cells containing dashes to indicate missing or zero values.

Lehmer's table of factors (1909) (reconstruction, D. Roegel, 2011)

Table with columns representing numbers from 630,000 to 651,000 and rows representing their prime factorizations. The table is organized into groups of 10 rows, labeled with numbers like 06, 30, 31, etc., on the left side.

Lehmer's table of factors (1909) (reconstruction, D. Roegel, 2011)

Table with columns for numbers 31 to 209 and rows for factor sets. Each row contains a list of prime factors for a specific number, with some numbers having multiple rows of factors.

Lehmer's table of factors (1909) (reconstruction, D. Roegel, 2011)

Table with columns for numbers 672000 to 693000 and rows for factors. The table contains numerical data representing the factorization of each number in the range.

Lehmer's table of factors (1909) (reconstruction, D. Roegel, 2011)

Table with columns for factor ranges (e.g., 06-93, 94-100, 101-107, 108-114, 115-121, 122-128, 129-135, 136-142, 143-149, 150-156, 157-163, 164-170, 171-177, 178-184, 185-191, 192-198, 199-205) and rows of numerical data representing factorizations.



Lehmer's table of factors (1909) (reconstruction, D. Roegel, 2011)

Table with 34 columns and 34 rows of numerical data, representing Lehmer's table of factors for the range 714 000 to 735 000. Each cell contains a small integer value.

Lehmer's table of factors (1909) (reconstruction, D. Roegel, 2011)

Table with columns 35-109 and rows 07-55. Each cell contains a sequence of numbers representing factors for a specific range of integers. The table is a dense grid of numerical data.

Lehmer's table of factors (1909) (reconstruction, D. Roegel, 2011)

Table with columns for numbers 07-76 and rows for factors 36-99. Each cell contains a list of prime factors for that number.

Lehmer's table of factors (1909) (reconstruction, D. Roegel, 2011)

Table with columns for numbers 07-99 and rows for factors 37-109. Each cell contains a digit representing a factor or zero.

Lehmer's table of factors (1909) (reconstruction, D. Roegel, 2011)

Table with columns for factor ranges (e.g., 07 98, 99, 08 00) and rows of numerical data representing factorizations. The table is organized into blocks of 20 rows each, with the first row of each block containing the range and the subsequent rows containing the factorization data.

Lehmer's table of factors (1909) (reconstruction, D. Roegel, 2011)

Table with columns for numbers 08-19, 20-29, 30-39, 40-49, 50-59, 60-69, 70-79, 80-89, 90-99 and rows of factor data.

Lehmer's table of factors (1909) (reconstruction, D. Roegel, 2011)

Table with 40 columns (numbered 0-39) and 60 rows (numbered 0-59). Each cell contains a numerical value representing a factor or reconstruction data.

Lehmer's table of factors (1909) (reconstruction, D. Roegel, 2011)

Table with columns for factor ranges (e.g., 08 61, 62 5, 63 10) and rows of numerical data representing factorizations. The table is organized into blocks of 10 rows each, with the first row of each block containing the factor range and the subsequent rows containing the factorization data.





Lehmer's table of factors (1909) (reconstruction, D. Roegel, 2011)

Table with columns representing numbers from 903000 to 924000 and rows representing factorization data. The table is organized into groups of 10 rows, labeled 03 through 23 on the left. Each row contains a sequence of numbers representing factors or remainders.

Lehmer's table of factors (1909) (reconstruction, D. Roegel, 2011)

Table with 40 columns and 100 rows of numerical data, representing Lehmer's table of factors. Each row contains a sequence of numbers, some of which are bolded or have specific formatting, representing the factors of integers in the range 924,000 to 945,000.

Lehmer's table of factors (1909) (reconstruction, D. Roegel, 2011)

Table with 45 columns and 45 rows of numerical data, representing Lehmer's table of factors for the range 945,000 to 966,000. Each cell contains a number representing a factor or a specific value in the table.



Lehmer's table of factors (1909) (reconstruction, D. Roegel, 2011)

Table with columns for numbers 47 to 99 and rows for factors 1 to 209. The table contains numerical data representing the factors of numbers in the range 987,000 to 1,008,000.

Lehmer's table of factors (1909) (reconstruction, D. Roegel, 2011)

Table with columns for numbers 48 to 209 and rows for factors 1 to 209. The table contains numerical data representing the factors of numbers in the range 1,008,000 to 1,029,000.

Lehmer's table of factors (1909) (reconstruction, D. Roegel, 2011)

Table with columns for numbers 109-99 and rows for factors 49-99. Each cell contains a numerical value representing a factor or its exponent.



Lehmer's table of factors (1909) (reconstruction, D. Roegel, 2011)

Table with columns for numbers 1050-1099 and rows for factors 1-99. Each cell contains a factor or a dash indicating no factor.

Lehmer's table of factors (1909) (reconstruction, D. Roegel, 2011)

Table with 100 columns (numbered 01 to 100) and 100 rows (numbered 10 to 99). Each cell contains a sequence of numbers representing factors, with some cells containing dashes to indicate missing or zero values. The numbers are arranged in a grid-like pattern across the page.

Lehmer's table of factors (1909) (reconstruction, D. Roegel, 2011)

Table with 100 columns (numbered 02 to 99) and 100 rows (numbered 10 92 to 99). Each cell contains a numerical value representing a factor or reconstruction data.

Lehmer's table of factors (1909) (reconstruction, D. Roegel, 2011)

Table with 40 columns and 99 rows of numerical data, representing Lehmer's table of factors for numbers 113000 to 1134000.



Lehmer's table of factors (1909) (reconstruction, D. Roegel, 2011)

Table with 100 columns (numbered 55 to 109) and 100 rows (numbered 11 55 to 75 99). Each cell contains integers representing factors or values. The table is a dense grid of numbers, with some cells containing multiple values separated by spaces or dashes.

Lehmer's table of factors (1909) (reconstruction, D. Roegel, 2011)

Table with columns for numbers 1176 to 99 and rows for factors. Each cell contains a list of prime factors for that number, separated by spaces. The table is a grid of numbers and their prime decompositions.

Lehmer's table of factors (1909) (reconstruction, D. Roegel, 2011)

Table with columns for numbers 175 to 218 and rows for factors 1 to 17. Each cell contains a digit representing a factor of the corresponding number.



Lehmer's table of factors (1909) (reconstruction, D. Roegel, 2011)

Table with 40 columns (numbered 0-39) and 40 rows (numbered 12-51). Each cell contains a numerical value representing a factor or reconstruction data.

Lehmer's table of factors (1909) (reconstruction, D. Roegel, 2011)

Table with columns for numbers 1239-99 and rows for factors 50-99. Each cell contains a list of prime factors for that number.

Lehmer's table of factors (1909) (reconstruction, D. Roegel, 2011)

Table with 100 columns (numbered 00 to 99) and 100 rows (numbered 12 60 to 99). Each cell contains integers representing factors or values. The table is a Lehmer's table of factors, showing the relationship between numbers and their prime factors.

Lehmer's table of factors (1909) (reconstruction, D. Roegel, 2011)

Table with columns for numbers 1281 to 1302 and rows for factors. Each cell contains a list of prime factors for that number, separated by spaces. The table is organized into groups of 10 rows, labeled on the left with numbers like 81, 82, 83, etc.

Lehmer's table of factors (1909) (reconstruction, D. Roegel, 2011)

Table with 100 columns (numbered 02 to 99) and 100 rows (numbered 13 02 to 99). Each cell contains a numerical value representing a factor or reconstruction data.

Lehmer's table of factors (1909) (reconstruction, D. Roegel, 2011)

Table with columns for numbers 1323000 to 1344000 and rows for factors. The table contains numerical data representing the factorization of each number in the range.

Lehmer's table of factors (1909) (reconstruction, D. Roegel, 2011)

Table with columns 64-99 and rows 13-101. Each cell contains a sequence of integers representing factors, with some cells containing dashes to indicate missing or zero values.

Lehmer's table of factors (1909) (reconstruction, D. Roegel, 2011)

Table with columns for numbers 1365000 to 1386000 and rows for factors. Each row contains a sequence of numbers representing factors for a specific integer. The table is organized into groups of 10 rows, with the first row of each group containing the integer being factored.



Lehmer's table of factors (1909) (reconstruction, D. Roegel, 2011)

Table with columns for numbers and their factors. The table is organized into rows, each representing a range of numbers. Each cell contains a list of prime factors for that number. The numbers range from 66 to 99, and the factors are listed in a structured manner for each number.

Lehmer's table of factors (1909) (reconstruction, D. Roegel, 2011)

Table with 100 columns (numbered 07 to 99) and 100 rows (numbered 14 to 99). Each cell contains a numerical value representing a factor or product. The table is a dense grid of numbers, with some cells containing multiple values separated by spaces or dashes.

Lehmer's table of factors (1909) (reconstruction, D. Roegel, 2011)

Table with columns 1-29 and rows 1428-999. Each row contains 28 numerical values representing factors for a specific range of numbers.

Lehmer's table of factors (1909) (reconstruction, D. Roegel, 2011)

Table with columns 00-99 and rows 14-99. Each cell contains a sequence of numbers representing factors. The table is a Lehmer's table of factors, showing the prime factors of numbers in the range 1449000 to 1470000. The columns are labeled 00 through 99, and the rows are labeled 14 through 99. Each cell contains a list of prime factors for a specific number, with some numbers having multiple factors listed.

Lehmer's table of factors (1909) (reconstruction, D. Roegel, 2011)

Table with 100 columns (factors) and rows representing numbers from 14 700 to 99 299. Each cell contains a small integer representing the factor's multiplicity or contribution.

Lehmer's table of factors (1909) (reconstruction, D. Roegel, 2011)

Table with 100 columns (numbered 1-100) and 100 rows (numbered 1-100). Each cell contains a numerical value representing a factor or reconstruction data. The table is a dense grid of numbers, with some cells containing dashes or specific values like '1000000'.

Lehmer's table of factors (1909) (reconstruction, D. Roegel, 2011)

Table with columns 1-32 and rows 15-32. Each row contains 32 numerical values representing factors in Lehmer's table.

Lehmer's table of factors (1909) (reconstruction, D. Roegel, 2011)

Table with 40 columns and 99 rows of numerical data, representing Lehmer's table of factors for the range 1 533 000 to 1 554 000. Each row contains a sequence of numbers, likely representing prime factors or their indices for a specific integer in the range.



Lehmer's table of factors (1909) (reconstruction, D. Roegel, 2011)

Table with 40 columns and 99 rows of numerical data, representing Lehmer's table of factors for the range 1 554 000 to 1 575 000.

Lehmer's table of factors (1909) (reconstruction, D. Roegel, 2011)

Table with columns 1-75 and rows 15-99. Each cell contains a sequence of integers representing factors or values for a specific number in the range 1575000-1596000.



Lehmer's table of factors (1909) (reconstruction, D. Roegel, 2011)

Table with columns 1-100 and rows 16-37. Each cell contains a sequence of numbers representing factors, with some cells containing dashes to indicate missing or zero values.

Lehmer's table of factors (1909) (reconstruction, D. Roegel, 2011)

Table with 40 columns (numbered 78 to 199) and 10 rows (numbered 16 to 58). Each cell contains a sequence of numbers representing factors or values for a specific number in the range 1638000 to 1659000.

Lehmer's table of factors (1909) (reconstruction, D. Roegel, 2011)

Table with columns for numbers 1659-1680 and rows for factors. Each row contains a list of prime factors for a specific number, with some numbers having multiple rows of factors.

Lehmer's table of factors (1909) (reconstruction, D. Roegel, 2011)

Table with 100 columns (numbered 80-170) and 100 rows (numbered 1-100). Each cell contains a sequence of integers representing factors, with some cells containing dashes to indicate missing or zero values. The table is a Lehmer's table of factors for the range 1,680,000 to 1,701,000.

Lehmer's table of factors (1909) (reconstruction, D. Roegel, 2011)

Table with columns for numbers 1701 to 99 and rows for factors 1 to 43. Each cell contains a number representing a factor or zero.



Lehmer's table of factors (1909) (reconstruction, D. Roegel, 2011)

Table with 40 columns (numbered 82 to 99) and 40 rows (numbered 17 to 42). Each cell contains a sequence of integers representing factors, with some cells containing dashes to indicate missing or zero values. The table is a Lehmer's table of factors for the range 1,722,000 to 1,743,000.



Lehmer's table of factors (1909) (reconstruction, D. Roegel, 2011)

Table with columns for numbers 1764000 to 1785000 and rows for factors. The table contains numerical data representing the factorization of each number in the range.

Lehmer's table of factors (1909) (reconstruction, D. Roegel, 2011)

Table with columns for numbers and their prime factors. The table is organized into rows, with some rows starting with a number in the first column (e.g., 17 85, 86, 87, 88, 89, 90, 91, 92, 93, 94, 95, 96, 97, 98, 99, 18 00, 01, 02, 03, 04, 05). Each row contains a sequence of numbers representing factors of the corresponding number in the first column.

Lehmer's table of factors (1909) (reconstruction, D. Roegel, 2011)

Table with columns for numbers 1806 to 209 and rows for factors. Each cell contains a list of prime factors for that number, separated by spaces. The table is a grid of numbers and their prime decompositions.

Lehmer's table of factors (1909) (reconstruction, D. Roegel, 2011)

18	27	87	1	11	13	17	19	23	29	31	37	41	43	47	53	59	61	67	71	73	79	83	89	97	101	103	107	109	113	121	127	131	137	139	143	149	151	157	163	167	169	173	179	181	187	191	193	197	199	209			
		0	11	61	257	--	199	11	29	47	743	17	71	31	59	13	263	11	--	1163	83	41	11	19	--	--	17	127	--	67	13	109	137	19	--	--	17	127	--	67	13	109	137	19	--	--	149	79	--	--	11	--	
		1	17	11	677	--	--	31	107	13	41	151	--	--	73	--	--	23	--	59	13	1009	--	--	--	17	269	13	103	11	--	--	17	29	--	--	157	--	--	23	29	--	97	--	--	307	11	19	127	47	73	11	
		2	--	--	139	89	19	137	13	331	43	463	11	37	1297	--	31	--	641	29	61	241	--	17	797	1229	13	11	--	37	739	11	--	37	739	11	--	37	739	11	--	37	739	11	--	37	739	11	--	37	739	11	
		3	63	--	607	17	--	17	17	17	17	17	17	17	17	17	17	17	17	17	17	17	17	17	17	17	17	17	17	17	17	17	17	17	17	17	17	17	17	17	17	17	17	17	17	17	17	17	17	17	17	17	17
		4	29	1129	31	17	11	--	431	47	11	823	43	211	29	--	619	37	769	181	277	--	--	103	13	11	--	--	67	977	19	31	853	--	--	139	11	59	--	631	19	11	--	13	17	19	27	51	71	31	643		
		5	--	--	17	23	41	--	13	11	149	937	173	--	--	419	1061	23	239	--	--	11	17	37	--	--	17	617	13	839	353	11	--	19	23	37	190	--	593	--	--	13	17	19	83	--	23	--	--	--			
		6	443	--	--	11	--	--	193	--	79	--	--	13	19	--	11	89	--	13	23	11	31	197	--	29	17	311	--	--	11	683	--	--	43	11	13	719	--	19	37	--	--	11	457	151	17	--	--				
		7	--	--	167	--	--	13	1307	--	--	709	577	--	23	1117	--	17	11	--	53	41	13	17	83	37	19	--	31	--	--	11	79	11	547	--	--	17	181	--	17	181	23	--	--	113	71	13	15				
		8	--	--	19	13	1097	--	--	17	59	--	11	--	109	13	1051	--	--	113	29	167	--	--	19	149	11	--	13	19	859	47	373	59	--	--	509	--	--	509	--	--	11	37	11	83	71	13	15				
		9	23	--	--	31	701	571	43	19	127	13	--	--	11	29	241	107	13	401	61	31	--	--	17	661	311	--	--	11	49	--	--	11	37	--	--	23	67	89	--	11	653	--	29	151	11	83	691	17	53	13	643
		28	5	--	--	17	23	41	--	13	11	149	937	173	--	--	419	1061	23	239	--	--	11	17	37	--	--	17	617	13	839	353	11	--	19	23	37	190	--	593	--	--	13	17	19	83	--	23	--	--			
		6	443	--	--	11	--	--	193	--	79	--	--	13	19	--	11	89	--	13	23	11	31	197	--	29	17	311	--	--	11	683	--	--	43	11	13	719	--	19	37	--	--	11	457	151	17	--	--				
		7	--	--	167	--	--	13	1307	--	--	709	577	--	23	1117	--	17	11	--	53	41	13	17	83	37	19	--	31	--	--	11	79	11	547	--	--	17	181	--	17	181	23	--	--	113	71	13	15				
		8	--	--	19	13	1097	--	--	17	59	--	11	--	109	13	1051	--	--	113	29	167	--	--	19	149	11	--	13	19	859	47	373	59	--	--	509	--	--	509	--	--	11	37	11	83	71	13	15				
		9	23	--	--	31	701	571	43	19	127	13	--	--	11	29	241	107	13	401	61	31	--	--	17	661	311	--	--	11	49	--	--	11	37	--	--	23	67	89	--	11	653	--	29	151	11	83	691	17	53	13	643
		29	10	139	19	11	29	--	1201	97	113	37	--	--	443	131	211	73	23	--	--	71	11	17	53	--	--	11	61	--	--	23	--	--	521	83	467	13	--	17	--	19	11	13	149	31	--	47	29	--	41	--	
		11	11	13	97	1259	61	11	19	31	13	23	17	113	983	1181	457	11	47	103	--	227	11	29	563	59	--	907	1063	241	331	--	--	103	--	19	--	41	389	--	13	--	17	19	--	--	13	53	11	--			
		12	43	11	--	--	37	41	--	19	11	--	17	79	--	19	61	--	13	--	107	71	829	--	--	23	--	13	11	--	31	199	13	11	757	--	--	131	--	37	127	17	--	--	11	13	31	--	19	11			
		13	347	71	--	233	--	--	17	59	--	11	--	109	13	1051	--	--	113	29	167	--	--	19	149	11	--	13	19	859	47	373	59	--	--	509	--	--	509	--	--	11	37	11	83	71	13	15					
		14	1277	19	41	491	--	--	151	11	523	1229	37	29	11	17	103	269	--	--	101	13	--	--	11	23	659	31	13	--	19	17	11	--	--	181	257	11	89	1129	--	--	59	13	97	23	19	277	157				
		15	827	29	--	71	11	467	13	11	79	127	17	31	--	359	47	--	13	--	367	83	59	337	19	--	11	479	--	--	17	29	41	--	--	19	97	877	11	--	563	23	--	11	73	--	--	--	--	653			
		16	13	293	17	991	--	619	11	--	229	--	19	17	13	--	--	37	--	11	13	--	107	31	53	89	43	--	569	--	97	13	1231	11	739	17	--	13	--	41	859	--	359	23	947	43	--	--	13				
		17	--	31	--	11	--	19	--	199	223	17	--	--	--	11	--	67	31	37	11	--	79	61	37	11	--	79	61	37	11	--	--	17	29	41	11	--	19	797	17	11	197	283	--	313	--	263	--	13	31	139	53
		18	17	47	61	37	29	13	547	43	--	19	23	101	--	1283	211	11	587	19	--	23	71	13	17	--	1097	--	13	--	11	443	--	--	421	--	41	--	59	379	31	13	11	--	19	--	47	709	79	61			
		19	53	--	23	--	17	--	17	--	11	29	--	13	67	11	37	373	149	13	43	47	--	--	17	107	11	53	23	--	--	19	17	11	--	--	19	17	11	--	43	11	19	23	--	67	11	41	29	17	457		
		30	15	827	29	--	71	11	467	13	11	79	127	17	31	--	359	47	--	13	--	367	83	59	337	19	--	11	479	--	--	17	29	41	--	--	19	97	877	11	--	563	23	--	11	73	--	--	--	--	857		
		16	13	293	17	991	--	619	11	--	229	--	19	17	13	--	--	37	--	11	13	--	107	31	53	89	43	--	569	--	97	13	1231	11	739	17	--	13	--	41	859	--	359	23	947	43	--	--	13				
		17	--	31	--	11	--	19	--	199	223	17	--	--	--	11	--	67	31	37	11	--	79	61	37	11	--	79	61	37	11	--	--	17	29	41	11	--	19	797	17	11	197	283	--	313	--	263	--	13	31	139	53
		18	17	47	61	37	29	13	547	43	--	19	23	101	--	1283	211	11	587	19	--	23	71	13	17	--	1097	--	13	--	11	443	--	--	421	--	41	--	59	379	31	13	11	--	19	--	47	709	79	61			
		19	53	--	23	--	17	--	17	--	11	29	--	13	67	11	37	373	149	13	43	47	--	--	17	107	11	53	23	--	--	19	17	11	--	--	19	17	11	--	43	11	19	23	--	67	11	41	29	17	457		
		31	20	19	--	127	479	13	17	83	101	23	37	--	--	359	47	--	13	--	367	83	59	337	19	--	13	59	71	--	--	53	11	29	43	--	--	641	--	--	13	73	11	313	401	--	31	19	17	199	--	857	
		21	--	23	11	13	19	101	563	--	--	13	79	37	--	449	--	--	11	--	11	--	107	31	53	89	43	--	107	--	13	37	1187	251	1063	29	23	83	919	31	11	67	13	--	17	--	139	487	13	19			
		22	11	17	--	47	257	11	103	23	19	13	227	--	--	11	211	--	17	--	11	--	11	353	127	--	29	71	17	--	--	41	31	193	61	19	593	--	--	23	631	--	17	--	--	347	13	11	499				
		23	--	11	13	19	--	--	283	--	--	71	617	--	--	31	383	59	173	29	17	--	47	23	79	--	--	11	--	317	11	163	19	--	--	11	--	37	--	--	1237	13	41	59	--	11	911	433	587	--	23		
		32	25	--	--	877	--	--	53	103	337	43	--	--	11	419	--	--	71	11	--	13	31	263	241	--	--	571	11	37	--	--	521	43</																			

Lehmer's table of factors (1909) (reconstruction, D. Roegel, 2011)

Table with columns for numbers 184800 to 186900 and rows for factors. Each row contains a sequence of numbers representing factors for a specific integer. The table is organized into blocks of 10 rows, with the first row of each block starting with a number in the left margin (e.g., 49, 50, 51, etc.).

Lehmer's table of factors (1909) (reconstruction, D. Roegel, 2011)

Table with columns for numbers 1869-8999 and rows for factors. Each cell contains a list of prime factors for that number.



Lehmer's table of factors (1909) (reconstruction, D. Roegel, 2011)

Table with columns for numbers 189000 to 1911000 and rows for factors. Each row contains a list of prime factors for a specific number, with some numbers having multiple rows of factors.

Lehmer's table of factors (1909) (reconstruction, D. Roegel, 2011)

Table with 30 columns (01-30) and 30 rows (19-99). Each cell contains a sequence of numbers representing factors for a specific range of integers. The numbers are arranged in a grid-like pattern, with some cells containing multiple numbers separated by spaces or dashes.

Lehmer's table of factors (1909) (reconstruction, D. Roegel, 2011)

Table with columns 02 to 209 and rows 19-32 to 99-643. Each cell contains a sequence of numbers representing factors or values for a specific range.

Lehmer's table of factors (1909) (reconstruction, D. Roegel, 2011)

Table with columns for numbers 1909-99 and rows for factors 03-99. Each cell contains a list of prime factors for that number.

Lehmer's table of factors (1909) (reconstruction, D. Roegel, 2011)

Table with 40 columns and 100 rows of numerical data, representing Lehmer's table of factors for the range 1,974,000 to 1,995,000.

Lehmer's table of factors (1909) (reconstruction, D. Roegel, 2011)

Table with 100 columns (05-99) and 100 rows (19-99). Each cell contains a sequence of numbers representing factors. The table is a Lehmer's table of factors, showing the factorization of numbers in the range 1,995,000 to 2,016,000. The columns are labeled 05 through 99, and the rows are labeled 19 through 99. The numbers in the cells represent the factors of the corresponding number in the range.

Lehmer's table of factors (1909) (reconstruction, D. Roegel, 2011)

Table with columns for numbers 2016 to 36 and rows for factors 06 to 99. Each cell contains a list of prime factors for that number.

Lehmer's table of factors (1909) (reconstruction, D. Roegel, 2011)

Table with columns for numbers 20-37 and rows for factors 07-99. Each cell contains a list of prime factors for that number.



Lehmer's table of factors (1909) (reconstruction, D. Roegel, 2011)

Table with columns for numbers 20-99 and rows for factors 08-99. Each cell contains a list of prime factors for that number.

Lehmer's table of factors (1909) (reconstruction, D. Roegel, 2011)

Table with columns for numbers 2079-2100 and rows for factors. Each cell contains a list of prime factors for that number, separated by spaces. The table is organized into groups of 10 rows, with the first row of each group containing the numbers 2079-2100.

Lehmer's table of factors (1909) (reconstruction, D. Roegel, 2011)

Table with 100 rows and 100 columns of numerical data, representing Lehmer's table of factors for the range 2 100 000 to 2 121 000. Each row contains 100 integers, with some cells containing dashes to indicate missing or zero values.

Lehmer's table of factors (1909) (reconstruction, D. Roegel, 2011)

Table with 40 columns and 40 rows of numerical data, representing Lehmer's table of factors. Each cell contains a sequence of numbers, likely representing prime factors or their exponents for a specific range of integers.

Lehmer's table of factors (1909) (reconstruction, D. Roegel, 2011)

Table with columns 1-100 and rows 21-62. Each cell contains a sequence of integers representing factors. The table is a reconstruction of Lehmer's 1909 work on factoring numbers between 214,200 and 216,300.

Lehmer's table of factors (1909) (reconstruction, D. Roegel, 2011)

Table with columns for numbers 1003 to 998 and rows for factors 1 to 37. The table contains numerical data representing the factors of integers in the range 2163000 to 2184000.

Lehmer's table of factors (1909) (reconstruction, D. Roegel, 2011)

Table with columns for numbers and their prime factors. The table is organized into rows, each representing a range of numbers. Each row contains a sequence of numbers and their corresponding prime factors, with some numbers having multiple factors listed. The table is a reconstruction of Lehmer's 1909 work on factoring numbers.

Lehmer's table of factors (1909) (reconstruction, D. Roegel, 2011)

Table with 40 columns and 100 rows of numerical data, representing Lehmer's table of factors. Each row contains a sequence of numbers, likely representing prime factors or their indices for a specific range of integers.



Lehmer's table of factors (1909) (reconstruction, D. Roegel, 2011)

Table with 40 columns and 40 rows of numerical data, representing Lehmer's table of factors for the range 2 226 000 to 2 247 000. Each row contains a sequence of numbers, with some cells containing multiple values separated by spaces.

Lehmer's table of factors (1909) (reconstruction, D. Roegel, 2011)

Table with columns for numbers and their prime factors, organized in groups of 10 rows. Each row contains a number followed by its prime factors in ascending order.

Lehmer's table of factors (1909) (reconstruction, D. Roegel, 2011)

Table with columns for numbers 226800 to 228900 and rows for factors. Each row contains a list of prime factors for a specific number, with some numbers having multiple rows of factors.

Lehmer's table of factors (1909) (reconstruction, D. Roegel, 2011)

Table with columns for numbers and their prime factors, organized in rows and columns. The table contains numerical data for the range 2 289 000 to 2 310 000.

Lehmer's table of factors (1909) (reconstruction, D. Roegel, 2011)

Table with 30 rows and 100 columns of numerical data, representing Lehmer's table of factors for the range 2 310 000 to 2 331 000.

Lehmer's table of factors (1909) (reconstruction, D. Roegel, 2011)

Table with columns for numbers and their prime factors. The table is organized into groups of 10 rows, labeled 23-31, 32, 33, 34, 35, 36, 37, 38, 39, 40, 41, 42, 43, 44, 45, 46, 47, 48, 49, 50, 51. Each row contains a sequence of numbers and their corresponding prime factors, with some numbers having multiple factors listed.

Lehmer's table of factors (1909) (reconstruction, D. Roegel, 2011)

Table with columns for numbers and their prime factors. The table is organized into rows, each representing a range of numbers. Each row contains a sequence of numbers and their corresponding prime factors, with some numbers having multiple factors listed. The table is a reconstruction of Lehmer's 1909 work on factoring numbers.

Lehmer's table of factors (1909) (reconstruction, D. Roegel, 2011)

Table with columns 1-23 and rows 23-99. Each cell contains a sequence of integers representing factors, with some cells containing multiple values separated by spaces.



Lehmer's table of factors (1909) (reconstruction, D. Roegel, 2011)

Table with 100 columns and 100 rows of numerical data, representing Lehmer's table of factors. Each cell contains a number, often with a sign, representing the product of prime factors for a specific integer in the range 2,394,000 to 2,415,000.

Lehmer's table of factors (1909) (reconstruction, D. Roegel, 2011)

Table with columns for numbers and their prime factors. The table is organized into rows of 20 numbers each, with the first column indicating the row number (e.g., 24, 25, 26, etc.). Each row contains 20 columns of numbers, representing the product of prime factors for that row's index. The factors are listed in ascending order within each cell.

Lehmer's table of factors (1909) (reconstruction, D. Roegel, 2011)

Table with columns for numbers 2436-2509 and rows for factors 1-209. Each cell contains a factor or a dash indicating no factor.

Lehmer's table of factors (1909) (reconstruction, D. Roegel, 2011)

Table with columns for numbers and their prime factors, organized in rows of 10 numbers each. The numbers range from 117 to 2478. Factors are listed below each number, separated by spaces.

Lehmer's table of factors (1909) (reconstruction, D. Roegel, 2011)

Table with columns for numbers and their prime factors, organized in rows and columns.

Lehmer's table of factors (1909) (reconstruction, D. Roegel, 2011)

Table with columns for numbers and their prime factors, organized in rows and columns. The table contains numerical data for the range 2 499 000 to 2 520 000.

Lehmer's table of factors (1909) (reconstruction, D. Roegel, 2011)

Table with columns for numbers 120-121 and rows for factors 1-100. Each cell contains a value representing the factorization of the number in that row and column.

Lehmer's table of factors (1909) (reconstruction, D. Roegel, 2011)

Table with columns 1-100 and rows 25-61. Each cell contains a number representing a factor or value in Lehmer's table.



Lehmer's table of factors (1909) (reconstruction, D. Roegel, 2011)

Table with 100 rows and 100 columns of numerical data, representing Lehmer's table of factors for the range 2 562 000 to 2 583 000.

Lehmer's table of factors (1909) (reconstruction, D. Roegel, 2011)

Table with columns for numbers 123-2600 and rows for factors 1-100. Each cell contains a digit representing a factor or zero.

Lehmer's table of factors (1909) (reconstruction, D. Roegel, 2011)

Table with columns for numbers and their prime factors, organized in rows and columns. The table contains numerical data for the range 2604000 to 2625000.

Lehmer's table of factors (1909) (reconstruction, D. Roegel, 2011)

Table with columns for numbers and their prime factors, organized in rows and columns. The table contains numerical data for the range 2 625 000 to 2 646 000.



Lehmer's table of factors (1909) (reconstruction, D. Roegel, 2011)

Table with columns for numbers 127-209 and rows for factors 26-87. Each cell contains a list of prime factors for that number.

Lehmer's table of factors (1909) (reconstruction, D. Roegel, 2011)

Table with columns for numbers and their prime factors. The table is organized into rows corresponding to the numbers 288, 89, 90, 91, 92, 93, 94, 95, 96, 97, 98, 99, 200, 01, 02, 03, 04, 05, 06, 07, and 08. Each row contains a list of numbers and their corresponding prime factors, with some numbers having multiple factors listed.

Lehmer's table of factors (1909) (reconstruction, D. Roegel, 2011)

Table with columns for numbers and their prime factors. The table is organized into rows corresponding to the numbers 2709, 10, 11, 12, 13, 14, 15, 16, 17, 18, 19, 20, 21, 22, 23, 24, 25, 26, 27, 28, and 29. Each row contains a list of numbers and their prime factors, with some numbers having multiple columns of factors.





Lehmer's table of factors (1909) (reconstruction, D. Roegel, 2011)

Table with columns for numbers and their prime factors. The table is organized into rows, each representing a range of numbers. Each cell contains a list of prime factors for that number, separated by spaces. The numbers are arranged in a grid-like pattern, with some numbers missing or having different factorizations than expected, indicating a reconstruction process.

Lehmer's table of factors (1909) (reconstruction, D. Roegel, 2011)

Table with columns for numbers and their prime factors, organized in rows of 20 numbers each. The table contains numerical data for the range 2772000 to 2793000.

Lehmer's table of factors (1909) (reconstruction, D. Roegel, 2011)

Table with columns for numbers and their prime factors, organized in rows and columns. The table contains numerical data for the range 2,793,000 to 2,814,000.

Lehmer's table of factors (1909) (reconstruction, D. Roegel, 2011)

Table with 40 columns and 40 rows of numerical data, representing Lehmer's table of factors. Each cell contains a number, with some cells containing multiple numbers separated by spaces. The table is organized into a grid with row and column indices.

Lehmer's table of factors (1909) (reconstruction, D. Roegel, 2011)

Table with 30 columns and 30 rows of numerical data, representing Lehmer's table of factors. Each cell contains a sequence of numbers, likely representing prime factors or their exponents for a given range of integers.

Lehmer's table of factors (1909) (reconstruction, D. Roegel, 2011)

Table with columns for numbers 136-99 and rows for factors 1-19. Each cell contains a digit representing a factor or zero.

Lehmer's table of factors (1909) (reconstruction, D. Roegel, 2011)

Table with columns for numbers and their prime factors. The table is organized into rows, each representing a range of numbers. Each row contains a sequence of numbers and their corresponding prime factors, with some numbers having multiple factors listed. The table is a reconstruction of Lehmer's original work on the factorization of numbers between 2,877,000 and 2,898,000.



Lehmer's table of factors (1909) (reconstruction, D. Roegel, 2011)

Table with columns for numbers and their prime factors, organized in rows and columns. The table contains numerical data for the range 2 988 000 to 2 919 000.

Lehmer's table of factors (1909) (reconstruction, D. Roegel, 2011)

Table with columns for numbers 139-99 and rows for factors 1-209. Each cell contains a small integer representing a factor or zero.

Lehmer's table of factors (1909) (reconstruction, D. Roegel, 2011)

Table with columns for numbers 1400-1499 and their prime factors. Each row represents a number and its decomposition into prime factors.

Lehmer's table of factors (1909) (reconstruction, D. Roegel, 2011)

Table with columns for numbers 141-209 and rows for factors 1-209. The table contains numerical data representing the factorization of integers in the range 2961000 to 2982000.

Lehmer's table of factors (1909) (reconstruction, D. Roegel, 2011)

Table with columns for numbers and their prime factors, organized in rows and columns. The table contains numerical data for the range 2 982 000 to 3 003 000.

Lehmer's table of factors (1909) (reconstruction, D. Roegel, 2011)

Table with columns for numbers 143-209 and rows for factorizations. Each row contains a sequence of numbers representing factors and their multiplicities. The table is organized into groups of 7 rows, labeled 03 through 23 on the left side.

Lehmer's table of factors (1909) (reconstruction, D. Roegel, 2011)

Table with columns for numbers 1441-3049 and rows for factors. Each cell contains a list of prime factors for that number.

Lehmer's table of factors (1909) (reconstruction, D. Roegel, 2011)

Table with columns for numbers 30-65 and rows for factor lists. Each row contains a list of prime factors for a specific number. The table is organized into groups of 5 rows for each number from 30 to 65.



Lehmer's table of factors (1909) (reconstruction, D. Roegel, 2011)

Table with columns for numbers and their prime factors, organized in rows of 10 numbers each. The numbers range from 146 to 3089. Factors are listed in columns, with some numbers having multiple factors.

Lehmer's table of factors (1909) (reconstruction, D. Roegel, 2011)

Table with columns for numbers and their prime factors. The table is organized into rows, with some rows starting with a number in the first column (e.g., 87, 88, 89, 90, 91, 92, 93, 94, 95, 96, 97, 98, 99, 3100, 01, 02, 03, 04, 05, 06, 07). Each row contains a sequence of numbers and their corresponding prime factors, separated by vertical bars.

Lehmer's table of factors (1909) (reconstruction, D. Roegel, 2011)

Table with 100 columns and 100 rows of numerical data, representing Lehmer's table of factors for the range 3 108 000 to 3 129 000.

Lehmer's table of factors (1909) (reconstruction, D. Roegel, 2011)

Table with columns for numbers 149-209 and rows for factorizations. Each row contains a number followed by its prime factors and their exponents, separated by dashes. For example, row 149: 149 1 11 13 17 19 23 29 31 37 41 43 47 53 59 61 67 71 73 79 83 89 97 101 103 107 109 113 121 127 131 137 139 143 149 151 157 163 167 169 173 179 181 187 191 193 197 199 209.

Lehmer's table of factors (1909) (reconstruction, D. Roegel, 2011)

Table with columns for numbers 150-171 and rows for factor sets (e.g., 31-50, 51-52, etc.). Each cell contains a list of prime factors for that number.

Lehmer's table of factors (1909) (reconstruction, D. Roegel, 2011)

Table with columns for numbers 171-192 and rows for factors 1-100. Each cell contains a small table of numbers representing the factorization of the product of the row and column numbers.

Lehmer's table of factors (1909) (reconstruction, D. Roegel, 2011)

Table with columns for numbers and their prime factors, organized in rows and columns. The table contains numerical data for the range 3 192 000 to 3 213 000.

Lehmer's table of factors (1909) (reconstruction, D. Roegel, 2011)

Table with columns for numbers 32-33 and rows for factors 1-100. Each cell contains a digit representing the frequency of a factor for a given number.



Lehmer's table of factors (1909) (reconstruction, D. Roegel, 2011)

Table with columns for numbers and their prime factors. The table is organized into rows, each representing a range of numbers. Each row contains a sequence of numbers and their corresponding prime factors, with some numbers having multiple factors listed. The table is a reconstruction of Lehmer's 1909 work on factoring numbers.

Lehmer's table of factors (1909) (reconstruction, D. Roegel, 2011)

Table with columns for numbers 155-209 and rows for factors 1-99. Each cell contains a number representing a factor or its multiplicity.

Lehmer's table of factors (1909) (reconstruction, D. Roegel, 2011)

Table with 10 columns and 100 rows of numerical data, representing Lehmer's table of factors for the range 3 276 000 to 3 297 000.

Lehmer's table of factors (1909) (reconstruction, D. Roegel, 2011)

Table with columns for numbers and their prime factors, organized in rows and columns. The table contains numerical data for the range 3 297 000 to 3 318 000.

Lehmer's table of factors (1909) (reconstruction, D. Roegel, 2011)

Table with columns for numbers and their prime factors. The table is organized into rows corresponding to the numbers 3318 through 99. Each row contains the number followed by its prime factors in ascending order, separated by spaces. For example, row 3318 contains '3318 2 3 13 17 19 23 29 31 37 41 43 47 53 59 61 67 71 73 79 83 89 97 101 103 107 109 113 121 127 131 137 139 143 149 151 157 163 167 169 173 179 181 187 191 193 197 199 209'.

Lehmer's table of factors (1909) (reconstruction, D. Roegel, 2011)

Table with columns for numbers 159-99 and rows for factors 1-29. Each cell contains a digit representing a factor or zero.

Lehmer's table of factors (1909) (reconstruction, D. Roegel, 2011)

Table with columns for numbers and their prime factors, organized in groups of 10 rows. Each row contains a number and its prime factors in ascending order.

Lehmer's table of factors (1909) (reconstruction, D. Roegel, 2011)

Table with columns for numbers 3381001 to 3402000 and rows for factors. The table contains numerical data representing the factorization of each number in the range.



Lehmer's table of factors (1909) (reconstruction, D. Roegel, 2011)

Table with columns for factor ranges (e.g., 162-171, 172-181, etc.) and rows for numbers (e.g., 34 02, 03, 04, etc.). Each cell contains a list of prime factors for that number.

Lehmer's table of factors (1909) (reconstruction, D. Roegel, 2011)

Table with columns for numbers and their prime factors, organized in rows of 10 numbers each. The table covers the range from 3423 to 3444.

Lehmer's table of factors (1909) (reconstruction, D. Roegel, 2011)

Table with columns for numbers and their prime factors. The table is organized into rows, each representing a range of numbers. Each cell contains a list of prime factors for that number, separated by spaces. The numbers are arranged in ascending order within each row.

Lehmer's table of factors (1909) (reconstruction, D. Roegel, 2011)

Table with columns for numbers and their prime factors, organized in rows and columns. The table contains numerical data for the range 3 465 000 to 3 486 000.

Lehmer's table of factors (1909) (reconstruction, D. Roegel, 2011)

Table with columns for numbers and their prime factors, organized in rows and columns.

Lehmer's table of factors (1909) (reconstruction, D. Roegel, 2011)

Table with 40 columns and 99 rows of numerical data, representing Lehmer's table of factors for numbers between 3,507,000 and 3,528,000.

Lehmer's table of factors (1909) (reconstruction, D. Roegel, 2011)

Table with columns for numbers and their factors, organized in groups of 10 rows. Each row contains a number followed by its prime factors and their multiplicities.

Lehmer's table of factors (1909) (reconstruction, D. Roegel, 2011)

Table with columns for numbers 3549-3570 and rows for factors. The table contains numerical data representing the factorization of integers in the range 3549 to 3570000.



Lehmer's table of factors (1909) (reconstruction, D. Roegel, 2011)

Table with columns for numbers and their prime factors, organized in rows of 10 numbers each. The table covers the range from 170 to 999.

Lehmer's table of factors (1909) (reconstruction, D. Roegel, 2011)

Table with columns for numbers and their prime factors, organized in rows and columns. The table contains numerical data for the range 3,591,000 to 3,612,000.

Lehmer's table of factors (1909) (reconstruction, D. Roegel, 2011)

Table with columns for numbers 172-32 and rows for factors 1-209. Each cell contains a small integer representing a factor or its multiplicity.

Lehmer's table of factors (1909) (reconstruction, D. Roegel, 2011)

Table with columns for numbers and their prime factors. The table is organized into rows, each representing a range of numbers. Each row contains a sequence of numbers and their corresponding prime factors, with some numbers having multiple factors listed. The table is a reconstruction of Lehmer's 1909 work on factoring numbers.

Lehmer's table of factors (1909) (reconstruction, D. Roegel, 2011)

Table with columns for numbers and their prime factors. The table is organized into rows, with the first column containing the number and subsequent columns containing its prime factors. The numbers range from 174 to 99,106,313. The factors are listed in ascending order for each number.

Lehmer's table of factors (1909) (reconstruction, D. Roegel, 2011)

Table with columns for numbers and their prime factors, organized in rows and columns.

Lehmer's table of factors (1909) (reconstruction, D. Roegel, 2011)

Table with columns for numbers and their prime factors. The table is organized into rows corresponding to the numbers 176 through 999. Each row contains the number followed by its prime factors in ascending order. For example, row 176: 176 2 11 13 17 19 23 29 31 37 41 43 47 53 59 61 67 71 73 79 83 89 97 101 103 107 109 113 121 127 131 137 139 143 149 151 157 163 167 169 173 179 181 187 191 193 197 199 209. The table continues in this pattern for all numbers up to 999.

Lehmer's table of factors (1909) (reconstruction, D. Roegel, 2011)

Table with columns for numbers and their prime factors. The table is organized into rows, each representing a range of numbers. Each row contains a sequence of numbers and their corresponding prime factors, with some numbers having multiple factors listed. The table is a reconstruction of Lehmer's 1909 work on factoring numbers.



Lehmer's table of factors (1909) (reconstruction, D. Roegel, 2011)

Table with columns for numbers 178-99 and rows for factors 1-209. The table contains numerical data representing the factorization of integers in the range 3,738,000 to 3,759,000.

Lehmer's table of factors (1909) (reconstruction, D. Roegel, 2011)

Table with columns for numbers and their prime factors. The table is organized into rows, each representing a range of numbers. Each row contains a sequence of numbers and their corresponding prime factors, with some numbers having multiple factors listed.

Lehmer's table of factors (1909) (reconstruction, D. Roegel, 2011)

Table with 40 columns (numbered 1-40) and 40 rows (numbered 37-80). Each cell contains a sequence of integers representing factors. The numbers are arranged in a grid, with some cells containing multiple numbers separated by spaces. The table is a reconstruction of Lehmer's 1909 work on factoring numbers between 3,780,000 and 3,801,000.

Lehmer's table of factors (1909) (reconstruction, D. Roegel, 2011)

Table with 40 columns (numbered 1-40) and 100 rows (numbered 1-100). Each row contains 40 numerical values representing factors. The table is a dense grid of numbers, with some rows containing dashes to indicate missing or zero values. The numbers are arranged in a regular grid pattern across the page.

Lehmer's table of factors (1909) (reconstruction, D. Roegel, 2011)

Table with 40 columns and 40 rows of numerical data, representing Lehmer's table of factors for the range 3 822 000 to 3 843 000. Each cell contains a sequence of integers representing factors.

Lehmer's table of factors (1909) (reconstruction, D. Roegel, 2011)

Table with columns for numbers and their prime factors. The table is organized into rows, each representing a range of numbers. Each row contains a sequence of numbers and their corresponding prime factors, with some numbers having multiple factors listed. The table is a reconstruction of Lehmer's 1909 work on factoring numbers.

Lehmer's table of factors (1909) (reconstruction, D. Roegel, 2011)

Table with columns for numbers and their prime factors, organized in rows and columns. The table contains numerical data for the range 3 864 000 to 3 885 000.

Lehmer's table of factors (1909) (reconstruction, D. Roegel, 2011)

Table with columns for numbers and their prime factors. The table is organized into rows, with some rows starting with a number in the first column (e.g., 38 85, 86, 87, etc.) and others starting with a number in the second column (e.g., 30 00, 01, 02, etc.). Each cell contains a list of prime factors for that number.



Lehmer's table of factors (1909) (reconstruction, D. Roegel, 2011)

Table with 40 columns (numbered 1-40) and 100 rows (numbered 06-26). Each cell contains numerical data representing factors and their multiplicities for a given number in the range 3,906,000 to 3,927,000.

Lehmer's table of factors (1909) (reconstruction, D. Roegel, 2011)

Table with columns for numbers and their prime factors, organized in rows and columns. The table contains numerical data for the range 3 927 000 to 3 948 000.

Lehmer's table of factors (1909) (reconstruction, D. Roegel, 2011)

Table with columns for numbers 189-999 and rows for factors. Each cell contains a number or a dash, representing the factorization of the number in the column by the number in the row.

Lehmer's table of factors (1909) (reconstruction, D. Roegel, 2011)

Table with 30 columns (numbered 1-30) and 30 rows (numbered 69-99). Each cell contains a sequence of integers representing factors, with some cells containing dashes to indicate missing or zero values.

Lehmer's table of factors (1909) (reconstruction, D. Roegel, 2011)

Table with columns for numbers 190-999 and rows for factors. Each cell contains a list of prime factors for that number, separated by spaces. The table is organized into groups of 10 rows, labeled 30-90, 40-00, 01, 02, 03, 04, 05, 06, 07, 08, 09, and 10.

Lehmer's table of factors (1909) (reconstruction, D. Roegel, 2011)

Table with 40 rows and 100 columns, containing numerical data for Lehmer's table of factors. The table is organized into groups of 10 rows each, labeled 10 through 39 on the left side. Each row contains 100 numerical values, representing factors and their frequencies for a specific range of numbers.



Lehmer's table of factors (1909) (reconstruction, D. Roegel, 2011)

Table with columns for numbers 193-99 and rows for factors 1-19. Each cell contains a digit representing a factor or zero.



Lehmer's table of factors (1909) (reconstruction, D. Roegel, 2011)

Table with columns for numbers 190-999 and rows for factors 1-99. Each cell contains a digit representing a factor or zero. The table is a grid of numbers from 190 to 999, with rows representing factors from 1 to 99. Each cell contains a digit (0-9) indicating the presence of a factor.

Lehmer's table of factors (1909) (reconstruction, D. Roegel, 2011)

Table with columns for numbers 1909-4116 and rows for factors. The table contains numerical data representing the factors of integers in the range 4095000 to 4116000.

Lehmer's table of factors (1909) (reconstruction, D. Roegel, 2011)

Table with columns for numbers 1909-2009 and rows for factors. The table contains numerical data representing the factorization of integers in the range 4116000 to 4137000.

Lehmer's table of factors (1909) (reconstruction, D. Roegel, 2011)

Table with columns representing numbers from 197 to 99 and rows representing factorizations. Each row contains a sequence of numbers representing factors and their multiplicities for a specific integer. The table is organized into groups of 10 rows, labeled 1 through 57 on the left side.

Lehmer's table of factors (1909) (reconstruction, D. Roegel, 2011)

Table with columns for numbers 1908-1909 and rows for factors 1-209. The table contains numerical data representing the factorization of integers in the range 4 158 000 to 4 179 000.

Lehmer's table of factors (1909) (reconstruction, D. Roegel, 2011)

Table with 40 columns and 40 rows of numerical data, representing Lehmer's table of factors for the range 4 179 000 to 4 200 000. Each cell contains a small integer value.

Lehmer's table of factors (1909) (reconstruction, D. Roegel, 2011)

Table with columns for factor ranges (e.g., 200-210, 210-220) and rows for numbers (e.g., 42 000, 01, 02, 03, 04, 05, 06, 07, 08, 09, 10, 11, 12, 13, 14, 15, 16, 17, 18, 19, 20). Each cell contains a list of prime factors for that number.

Lehmer's table of factors (1909) (reconstruction, D. Roegel, 2011)

Table with columns for numbers and their prime factors, organized in rows and columns. The table contains numerical data for the range 4221000 to 4242000.



Lehmer's table of factors (1909) (reconstruction, D. Roegel, 2011)

Table with columns for numbers 202-209 and rows for factors 1-209. The table contains numerical data representing the factorization of numbers in the range 4 242 000 to 4 263 000.

Lehmer's table of factors (1909) (reconstruction, D. Roegel, 2011)

Table with 42 rows and 63 columns, containing numerical data for Lehmer's table of factors. The table is organized into groups of 10 rows each, with the first row of each group containing a group number (e.g., 42, 63, 64, 65, 66, 67, 68, 69, 70, 71, 72, 73, 74, 75, 76, 77, 78, 79, 80, 81, 82, 83) and the remaining rows containing numerical values. The values are arranged in a grid-like pattern, with some cells containing multiple numbers separated by spaces or dashes.

Lehmer's table of factors (1909) (reconstruction, D. Roegel, 2011)

Table with columns for factor ranges (e.g., 204, 1, 11, 13, 17, 19, 23, 29, 31, 37, 41, 43, 47, 53, 59, 61, 67, 71, 73, 79, 83, 89, 97, 101, 103, 107, 109, 113, 121, 127, 131, 137, 139, 143, 149, 151, 157, 163, 167, 169, 173, 179, 181, 187, 191, 193, 197, 199, 203) and rows for numbers from 42 84 to 99.

Lehmer's table of factors (1909) (reconstruction, D. Roegel, 2011)

Table with columns for numbers and their prime factors. The table is organized into rows, each representing a range of numbers. Each row contains a sequence of numbers and their corresponding prime factors, with some numbers having multiple factors listed.

Lehmer's table of factors (1909) (reconstruction, D. Roegel, 2011)

Table with columns for numbers 206-408 and rows for factors 2-43. Each cell contains a factor or a dash indicating no factor.

Lehmer's table of factors (1909) (reconstruction, D. Roegel, 2011)

Table with columns for numbers and their prime factors, organized in rows and columns. The table contains numerical data representing the factorization of integers in the range 4347 to 99809.

Lehmer's table of factors (1909) (reconstruction, D. Roegel, 2011)

Table with columns for numbers and their prime factors, organized in rows and columns. The table contains numerical data for the range 4368000 to 4389000.

Lehmer's table of factors (1909) (reconstruction, D. Roegel, 2011)

Table with columns for numbers and their prime factors, organized in rows and columns. The table contains numerical data for the range 4 389 000 to 4 410 000.



Lehmer's table of factors (1909) (reconstruction, D. Roegel, 2011)

Table with 30 rows and 40 columns of numerical data, representing Lehmer's table of factors. Each row contains a sequence of numbers, some of which are bolded or have specific formatting, likely representing prime factors or their indices.

Lehmer's table of factors (1909) (reconstruction, D. Roegel, 2011)

Table with 44 rows and 211 columns, containing numerical data for Lehmer's table of factors. The table is organized into groups of 5 rows each, labeled 32 through 51 on the left side. Each row contains 211 numerical values representing factors.

Lehmer's table of factors (1909) (reconstruction, D. Roegel, 2011)

Table with columns numbered 212 to 99 and rows numbered 44 to 99. Each cell contains a numerical value representing a factor or multiplier in Lehmer's table.

Lehmer's table of factors (1909) (reconstruction, D. Roegel, 2011)

Table with columns for numbers and their prime factors, organized in rows and columns. The table contains numerical data for the range 4,473,000 to 4,494,000.

Lehmer's table of factors (1909) (reconstruction, D. Roegel, 2011)

Table with columns for numbers and their prime factors, organized in rows and columns. The table contains numerical data for the range 4 494 000 to 4 515 000.

Lehmer's table of factors (1909) (reconstruction, D. Roegel, 2011)

Large table with columns for numbers (215 to 99) and rows of factor data (1 to 209). Each cell contains numerical values representing factors and their frequencies.

Lehmer's table of factors (1909) (reconstruction, D. Roegel, 2011)

Table with columns for numbers and their prime factors, organized in rows of 20 columns each. The table covers the range from 4536000 to 4557000.

Lehmer's table of factors (1909) (reconstruction, D. Roegel, 2011)

Table with columns for numbers and their prime factors, organized in rows and columns.



Lehmer's table of factors (1909) (reconstruction, D. Roegel, 2011)

Table with columns for numbers and their prime factors. The table is organized into rows, each representing a range of numbers. Each row contains a sequence of numbers and their corresponding prime factors, with some numbers having multiple factors listed.

Lehmer's table of factors (1909) (reconstruction, D. Roegel, 2011)

Table with columns for numbers (e.g., 45 99, 46 00) and rows of factor data. The table contains numerical values representing factors and their frequencies for various numbers in the range 4599000 to 4620000.

Lehmer's table of factors (1909) (reconstruction, D. Roegel, 2011)

Table with columns for numbers 46-40 and rows for factors 1-100. Each cell contains a small table of numbers representing factors and their multiplicities.

Lehmer's table of factors (1909) (reconstruction, D. Roegel, 2011)

Table with columns for numbers 46-61 and rows for factors 1-209. Each cell contains a number representing a factor or its frequency.

Lehmer's table of factors (1909) (reconstruction, D. Roegel, 2011)

Table with columns for numbers 46-99 and rows for factors 1-209. Each cell contains a small table of numbers representing factors and their multiplicities.

Lehmer's table of factors (1909) (reconstruction, D. Roegel, 2011)

Table with columns for numbers 4683-4704 and rows for factors 1-209. The table contains numerical data representing the factorization of integers in the range 4683 to 4704.

Lehmer's table of factors (1909) (reconstruction, D. Roegel, 2011)

Table with columns for numbers 224 to 99 and rows for factors 01 to 99. Each cell contains a list of prime factors for that number.

Lehmer's table of factors (1909) (reconstruction, D. Roegel, 2011)

Table with columns for numbers and their prime factors, organized in rows and columns. The table contains numerical data for the range 4,725,000 to 4,746,000.



Lehmer's table of factors (1909) (reconstruction, D. Roegel, 2011)

Table with columns for numbers and their prime factors, organized in rows of 10 numbers each. The numbers range from 226 to 99. Factors are listed in columns, with some numbers having multiple factors.

Lehmer's table of factors (1909) (reconstruction, D. Roegel, 2011)

Table with columns for numbers 227-99 and rows for factors 1-209. Each cell contains a digit representing a factor or zero. The table is a grid of numbers from 1 to 209, with some cells containing multiple digits representing factors of the numbers in the first column.

Lehmer's table of factors (1909) (reconstruction, D. Roegel, 2011)

Table with columns for numbers and their prime factors, organized in rows and columns. The table contains numerical data for the range 4788000 to 4809000.

Lehmer's table of factors (1909) (reconstruction, D. Roegel, 2011)

Table with columns for numbers and their prime factors, organized in groups of 10 rows. Each row contains a number and its prime factors in ascending order.

Lehmer's table of factors (1909) (reconstruction, D. Roegel, 2011)

Table with columns for numbers 230-209 and rows for factors. The table contains numerical data representing the factors of numbers in the range 4,830,000 to 4,851,000.

Lehmer's table of factors (1909) (reconstruction, D. Roegel, 2011)

Table with columns for numbers 48-71 and rows for factors 1-209. Each cell contains a number representing a factor or its frequency.

Lehmer's table of factors (1909) (reconstruction, D. Roegel, 2011)

Table with 20 columns (numbered 232 to 499) and 20 rows (numbered 48 to 99). Each cell contains a sequence of numbers representing factors or values for a specific number in the range 4872000 to 4893000.

Lehmer's table of factors (1909) (reconstruction, D. Roegel, 2011)

Table with columns for numbers and their prime factors. The table is organized into rows corresponding to the numbers 4893 through 99. Each row contains the number followed by its prime factors in ascending order, separated by spaces. The factors are listed in columns, with some numbers having multiple occurrences of the same factor.



Lehmer's table of factors (1909) (reconstruction, D. Roegel, 2011)

Table with columns for numbers and their prime factors, organized in rows and columns.

Lehmer's table of factors (1909) (reconstruction, D. Roegel, 2011)

Table with columns for numbers and their prime factors, organized in rows and columns. The table contains numerical data for the range 4,935,000 to 4,956,000.

Lehmer's table of factors (1909) (reconstruction, D. Roegel, 2011)

Table with columns for numbers and their prime factors, organized in rows of 20 numbers each. The table contains a dense grid of numerical data representing the factorization of integers from 4,956,000 to 4,977,000.

Lehmer's table of factors (1909) (reconstruction, D. Roegel, 2011)

Table with columns for numbers and their prime factors. The table is organized into rows, with the first column containing the number and subsequent columns containing its prime factors. The numbers range from 4977 to 9961.

Lehmer's table of factors (1909) (reconstruction, D. Roegel, 2011)

Table with columns for factor ranges and numerical values. The table is organized into sections, with each section starting with a row number and a range of values. The values are arranged in columns, representing the Lehmer's table of factors for the range 4 998 000 to 5 019 000.

Lehmer's table of factors (1909) (reconstruction, D. Roegel, 2011)

Table with columns for numbers 239-999 and rows for factors 1-23. The table contains numerical data representing factorizations for each number in the range.

Lehmer's table of factors (1909) (reconstruction, D. Roegel, 2011)

Table with 20 columns and 60 rows of numerical data, representing Lehmer's table of factors for numbers 5040 to 5060. Each row contains 20 integers, likely representing the prime factors of the corresponding number in the first column.

Lehmer's table of factors (1909) (reconstruction, D. Roegel, 2011)

Table with columns for numbers and their prime factors, organized in rows and columns. The table contains numerical data for the range 5061 to 5082.



Lehmer's table of factors (1909) (reconstruction, D. Roegel, 2011)

Table with columns for numbers 242 to 99 and rows for factors 1 to 209. The table contains numerical data representing the factors of integers in the range 5082000 to 5103000.

Lehmer's table of factors (1909) (reconstruction, D. Roegel, 2011)

Table with columns for numbers and their prime factors, organized in groups of 10 rows. Each row contains a number and its prime factorization.

Lehmer's table of factors (1909) (reconstruction, D. Roegel, 2011)

A large grid table containing numerical data for factorization, with columns numbered 244 to 209 and rows numbered 1 to 44. Each cell contains a sequence of numbers representing factors or indices.

Lehmer's table of factors (1909) (reconstruction, D. Roegel, 2011)

Table with columns for numbers and their prime factors, organized in rows of 20 numbers each. The table contains a dense grid of numerical data representing the factorization of integers from 51,445 to 99,999.

Lehmer's table of factors (1909) (reconstruction, D. Roegel, 2011)

Table with columns for numbers and their prime factors. The table is organized into rows, each representing a range of numbers. Each row contains a sequence of numbers and their corresponding prime factors, with some numbers having multiple factors listed. The table is a reconstruction of Lehmer's original work on factoring numbers between 5,166,000 and 5,187,000.

Lehmer's table of factors (1909) (reconstruction, D. Roegel, 2011)

Table with columns for numbers and their prime factors, organized in groups of 10 rows. Each row contains a number and its prime factors in ascending order.

Lehmer's table of factors (1909) (reconstruction, D. Roegel, 2011)

Table with 20 columns (numbered 248-99) and 20 rows (numbered 52-99). Each cell contains a sequence of integers representing factors of numbers in the range 5208000-5229000.

Lehmer's table of factors (1909) (reconstruction, D. Roegel, 2011)

Table with columns for numbers and their prime factors, organized in groups of 10 rows. Each row contains a number and its prime factorization.



Lehmer's table of factors (1909) (reconstruction, D. Roegel, 2011)

Table with columns for numbers and their prime factors, organized in rows of 20 numbers each. The table covers the range from 52,500 to 99,175.

Lehmer's table of factors (1909) (reconstruction, D. Roegel, 2011)

Table with columns for numbers and their prime factors, organized in rows and columns. The table contains numerical data for the range 5 271 000 to 5 292 000.

Lehmer's table of factors (1909) (reconstruction, D. Roegel, 2011)

Table with columns for numbers and their prime factors. The table is organized into rows corresponding to the numbers 5292, 93, 94, 95, 96, 97, 98, 99, 5300, 01, 02, 03, 04, 05, 06, 07, 08, 09, 10, 11, and 12. Each row contains a list of numbers and their corresponding prime factors.

Lehmer's table of factors (1909) (reconstruction, D. Roegel, 2011)

Table with columns for numbers and their prime factors. The table is organized into rows, each representing a range of numbers. Each row contains the number and its prime factors in a specific order, often including the number itself as a factor. The factors are listed in ascending order of magnitude.

Lehmer's table of factors (1909) (reconstruction, D. Roegel, 2011)

Table with columns for numbers and their prime factors, organized in rows and columns. The table contains numerical data for the range 5334 to 5499.

Lehmer's table of factors (1909) (reconstruction, D. Roegel, 2011)

Table with columns for numbers and their prime factors, organized in groups of 10 rows. Each row contains a number and its prime factorization.

Lehmer's table of factors (1909) (reconstruction, D. Roegel, 2011)

Table with columns for numbers and their prime factors. The table is organized into rows, each representing a range of numbers. Each row contains a sequence of numbers and their corresponding prime factors, with some numbers having multiple factors listed. The table is a reconstruction of Lehmer's 1909 work on factoring numbers in the range 5,376,000 to 5,397,000.

Lehmer's table of factors (1909) (reconstruction, D. Roegel, 2011)

Table with columns for numbers and their prime factors, organized in rows and columns. The table contains numerical data for the range 5397000 to 5418000.



Lehmer's table of factors (1909) (reconstruction, D. Roegel, 2011)

Table with columns for numbers and their prime factors, organized in rows of 20 numbers each. The table contains a dense grid of numerical data representing factorizations.

Lehmer's table of factors (1909) (reconstruction, D. Roegel, 2011)

Table with columns for numbers and their prime factors, organized in rows and columns. The table contains numerical data for the range 5,439,000 to 5,460,000.

Lehmer's table of factors (1909) (reconstruction, D. Roegel, 2011)

Table with columns for numbers and their prime factors, organized in rows and columns.

Lehmer's table of factors (1909) (reconstruction, D. Roegel, 2011)

Table with columns for numbers and their prime factors, organized in rows and columns. The table contains numerical data for the range 5481000 to 5502000.



Lehmer's table of factors (1909) (reconstruction, D. Roegel, 2011)

Table with columns for numbers and their prime factors, organized in rows and columns. The table contains numerical data for the range 5 523 000 to 5 544 000.

Lehmer's table of factors (1909) (reconstruction, D. Roegel, 2011)

Table with columns for numbers 264 to 99 and rows of factor lists. Each row contains a list of prime factors for a specific number, with some numbers having multiple rows of factors.

Lehmer's table of factors (1909) (reconstruction, D. Roegel, 2011)

Table with columns for numbers and their prime factors, organized in rows and columns.



Lehmer's table of factors (1909) (reconstruction, D. Roegel, 2011)

Table with columns for numbers and their prime factors, organized in rows and columns. The table contains numerical data for the range 5586000 to 5607000.

Lehmer's table of factors (1909) (reconstruction, D. Roegel, 2011)

Table with columns for numbers and their prime factors. The table is organized into rows, each representing a range of numbers. Each row contains a sequence of numbers and their corresponding prime factors, with some numbers having multiple factors listed. The table is a reconstruction of Lehmer's original work on factoring numbers in the range 5,607,000 to 5,628,000.

Lehmer's table of factors (1909) (reconstruction, D. Roegel, 2011)

Table with columns for numbers and their prime factors. The table is organized into rows, each representing a range of numbers. Each cell contains a list of prime factors for that number, separated by spaces. The numbers are arranged in ascending order within each row.

Lehmer's table of factors (1909) (reconstruction, D. Roegel, 2011)

Table with columns for numbers and their prime factors. The table is organized into rows corresponding to the numbers 5649 through 5670. Each row contains the number followed by its prime factors in ascending order, separated by spaces. For example, the first row for 5649 shows factors: 2, 3, 43, 1249, 101, 67, 13, 809, 19, 17, 71, 349, 209, 37, 1319, 11, 23, 19, 17, 73, 59, 11, 1913, 89, 11, 41, 307, 1069, 113, 221, 127, 131, 137, 139, 143, 149, 151, 157, 163, 167, 169, 173, 179, 181, 187, 191, 193, 197, 199, 203.

Lehmer's table of factors (1909) (reconstruction, D. Roegel, 2011)

Table with columns for numbers and their prime factors, organized in rows and columns.

Lehmer's table of factors (1909) (reconstruction, D. Roegel, 2011)

Table with columns for numbers and their prime factors. The table is organized into rows, each representing a range of numbers. Each row contains a sequence of numbers and their corresponding prime factors, with some numbers having multiple factors listed. The table is a reconstruction of Lehmer's 1909 work on factoring numbers.

Lehmer's table of factors (1909) (reconstruction, D. Roegel, 2011)

Table with columns for numbers and their prime factors. The table is organized into rows, each representing a range of numbers. Each row contains a sequence of numbers and their corresponding prime factors, with some numbers having multiple factors listed. The table is a reconstruction of Lehmer's original work on factoring numbers in the range 5,712,000 to 5,733,000.

Lehmer's table of factors (1909) (reconstruction, D. Roegel, 2011)

Table with columns for numbers 273-299 and rows for factors 1-209. Each cell contains a small integer representing a factor or zero.



Lehmer's table of factors (1909) (reconstruction, D. Roegel, 2011)

Table with columns for numbers and their prime factors, organized in rows and columns. The table contains numerical data for the range 5754000 to 5775000.

Lehmer's table of factors (1909) (reconstruction, D. Roegel, 2011)

Table with columns for numbers and their prime factors. The table is organized into rows, each representing a range of numbers. Each row contains a sequence of numbers and their corresponding prime factors, with some numbers having multiple factors listed.

Lehmer's table of factors (1909) (reconstruction, D. Roegel, 2011)

Table with columns for numbers and their prime factors, organized in rows and columns. The table contains numerical data for the range 5796000 to 5817000.

Lehmer's table of factors (1909) (reconstruction, D. Roegel, 2011)

Table with columns for numbers and their prime factors. The table is organized into rows, with each row representing a range of numbers. The columns contain the numbers and their corresponding prime factors, often with exponents. The table is a reconstruction of Lehmer's 1909 work on factoring numbers.

Lehmer's table of factors (1909) (reconstruction, D. Roegel, 2011)

Table with columns for numbers and their prime factors, organized in rows and columns. The table contains numerical data for the range 5838 to 5899.

Lehmer's table of factors (1909) (reconstruction, D. Roegel, 2011)

Table with columns for numbers and their prime factors, organized in rows and columns.

Lehmer's table of factors (1909) (reconstruction, D. Roegel, 2011)

Table with columns for numbers and their prime factors, organized in rows and columns. The table contains numerical data for the range 5880000 to 5901000.

Lehmer's table of factors (1909) (reconstruction, D. Roegel, 2011)

Table with columns for numbers (281-99) and rows for factors (01-21). Each cell contains a list of prime factors for that number.



Lehmer's table of factors (1909) (reconstruction, D. Roegel, 2011)

50	22	282	1	11	13	17	19	23	29	31	37	41	43	47	53	59	61	67	71	73	79	83	89	97	101	103	107	109	113	121	127	131	137	139	143	149	151	157	163	167	169	173	179	181	187	191	193	197	199	209				
		0	17	757	--	23	--	31	--	--	--	--	--	--	--	--	--	--	109	--	--	43	--	--	337	--	--	--	--	373	--	1201	13	181	--	89	--	59	--	11	137	931	53	--	11	127	13	1327	719	487	17	--		
		1	223	--	--	--	463	17	13	23	--	--	11	457	--	31	709	19	--	--	--	13	83	17	--	599	--	--	13	11	37	101	17	43	--	--	--	--	--	59	--	11	137	931	53	--	11	127	13	1327	719	487	17	--
		2	--	23	11	--	199	17	13	--	31	--	--	29	--	37	--	41	--	--	11	--	--	19	47	11	23	13	97	--	--	19	61	107	211	73	23	147	--	29	11	1433	--	67	149	71	47	17	--	--				
		3	11	29	31	17	--	--	19	23	37	--	61	--	--	89	--	107	137	107	--	37	1007	11	11	87	1493	19	213	--	--	29	13	863	--	--	--	17	--	85	23	53	103	--	15	1021	31	13	11	13	11	13		
		4	--	11	--	--	43	727	2003	--	--	--	--	47	127	41	283	--	--	--	--	--	--	37	130	23	--	--	--	--	11	1093	--	193	--	--	--	11	29	--	37	19	433	--	--	13	11	--	17	1999	61	11	13	
		5	--	--	1087	--	59	13	19	47	--	277	11	--	223	1881	97	19	23	17	83	--	--	17	31	41	13	127	17	11	29	401	13	11	59	107	31	43	23	89	37	--	13	19	--	--	11	521	17	--				
		6	--	--	1597	151	29	61	179	11	--	2161	389	13	11	--	--	17	--	13	1039	--	251	11	17	47	37	--	733	487	31	379	23	1297	67	541	13	587	11	103	17	--	53	37	1019	1117	29	47	19	137				
		7	--	641	191	2333	11	--	79	--	11	--	--	17	67	13	229	101	--	233	13	--	23	13	--	19	11	151	163	--	--	71	769	--	373	13	11	23	17	43	41	11	19	53	79	127	37	17	--					
		8	--	--	97	13	1049	11	--	97	--	147	43	13	--	--	367	89	21	31	19	11	87	1493	19	213	--	271	83	13	1693	23	11	1109	--	563	17	--	--	13	29	383	2393	171	433	13	13	11						
		9	421	--	23	11	163	--	--	1619	47	13	--	--	691	23	11	13	--	2297	53	11	--	197	19	1237	--	--	1277	--	--	11	47	71	19	29	11	17	883	--	601	577	--	31	971	1747	97	11	13	1171	1063			
		23	5	--	--	--	--	--	--	--	--	--	--	--	--	--	--	--	--	--	--	--	--	--	--	--	--	--	--	--	--	--	--	--	--	--	--	--	--	--	--	--	--	--	--	--	--	--	--	--	--			
		24	10	797	--	13	--	--	337	--	31	61	--	17	2141	43	--	--	23	151	--	1151	2213	--	29	47	41	--	1097	--	117	43	13	59	103	19	--	--	13	887	17	11	53	83	--	--	1873	73	--					
		11	71	13	29	--	37	19	--	67	11	--	251	101	23	11	19	41	17	--	149	53	13	--	43	11	--	673	127	397	--	31	19	17	71	41	73	--	227	13	11	17	--	47	29	11	13	--	--	29				
		12	193	--	1201	--	661	1613	17	547	19	739	11	--	647	13	--	587	23	19	59	67	--	257	41	31	191	11	89	--	937	--	13	97	43	29	11	--	17	31	--	11	2179	--	13	19	--	--	29					
		13	23	1303	11	61	--	--	73	--	101	--	--	37	23	--	13	--	337	953	1231	11	31	89	--	11	--	503	59	--	--	17	311	13	23	271	71	--	163	13	11	73	19	1783	107	229	37	53	43	113	--			
		14	11	41	--	59	17	11	--	13	--	--	17	31	29	--	11	67	43	29	13	828	11	1013	--	--	317	13	23	17	523	244	29	79	--	153	211	--	--	61	--	83	13	19	--	31	41	17	--	11	47			
		25	15	--	11	17	--	19	--	13	--	1951	23	29	17	--	--	37	1091	--	--	461	--	31	29	--	13	601	269	11	--	103	83	--	11	17	1601	277	--	--	787	23	11	--	11	53	109	11	--	--				
		16	13	31	--	--	947	--	--	151	19	17	11	307	13	--	23	--	47	31	13	41	--	1871	--	23	11	19	1481	103	11	--	--	17	--	19	13	131	239	43	1289	163	29	59	--	79	11	23	13					
		17	17	149	--	19	71	--	29	11	41	--	--	2287	11	73	1193	389	--	--	257	263	--	11	349	13	--	193	--	--	23	19	17	89	47	347	631	--	--	11	283	19	23	--	13	--	--	467	107	173	223			
		18	677	853	1889	--	--	13	17	353	--	11	--	97	113	--	--	373	139	251	--	79	17	13	37	11	29	331	47	13	17	419	457	557	19	11	463	--	29	67	11	13	--	19	--	23	811	17	--					
		19	31	469	109	--	281	13	17	97	79	37	--	--	13	19	--	--	439	11	--	--	439	11	--	929	--	--	23	83	29	--	--	--	--	--	153	211	--	--	61	--	83	13	19	--	31	41	17	--				
		26	20	127	61	73	11	13	--	--	29	859	89	--	37	--	11	1319	13	--	157	11	227	13	31	43	--	--	1033	11	1427	--	269	79	11	67	211	31	577	349	59	401	--	17	683	11	--	--	97					
		21	29	17	19	13	--	23	109	71	--	193	13	--	--	29	433	--	11	137	17	2089	19	983	113	53	103	--	17	13	19	--	11	31	757	47	43	--	1823	61	101	13	1051	11	373	--	11	97	--	13	53			
		22	--	--	919	2239	--	29	--	19	11	13	23	479	31	11	431	13	1187	17	61	--	23	719	--	11	17	--	43	--	47	--	137	29	--	--	37	89	--	1453	11	--	821	23	173	11	397	13	43	17				
		23	53	19	13	23	503	--	31	491	71	2351	--	11	2251	--	--	17	151	--	1949	241	37	--	17	29	53	23	11	--	1789	239	--	277	13	--	1291	11	49	167	13	--	11	2653	--	67	1847	--	47	--				
		27	25	11	23	--	--	1013	19	149	--	11	13	--	119	--	--	673	--	--	17	673	--	--	31	51	173	1627	647	991	--	19	--	19	--	113	257	19	1033	19	179	31	13	--	--	13	11	--						
		25	11	23	--	--	--	11	83	29	2351	--	--	--	191	61	13	11	--	--	11	1303	--	--	41	73	101	13	--	23	--	--	--	--	17	--	31	--	67	761	61	37	13	--	11	977	11	--						
		26	2393	11	--	--	31	--	89	23	853	--	--	43	29	13	577	73	--	197	--	17	--	67	--	19	--	181	53	11	--	811	11	193	17	--	13	--	23	--	19	113	11	227	1511	41	37	11	--					
		27	59	--	293	29	--	107	--	13	--	--	11	--	--	--	541	--	--	--	13	--	733	--	83	11	443	19	61	11	37	--	23	73	41	563	--	--	547	491	17	31	13	29	307	11	857	331	--					
		28	37	53	--	--	1049	41	13	11	17	--	79	197	11	379	--	863	17	269	67	2017	47	11	19	401	13	--	--	283	1217	199	1193	17	43	37	--	31	11	--	17	--	--	--	277	--	--	23						
		29	34	17	233	31	--	11	13	29	187	17	137	--	107	--	13	173	13	44	--	37	1901	13	173	13	17	131	--	--	433	139	317	23	127	79	11	--	13	81	13	11	--	23	1301	13	17	59						
		30	179	--	41	1123	23	19	11	--	--	--	--	31	--	17	19	43	103	11	59	29	--	79	109	13	61	31	--	53	17	11	23	--	2411	--	11	457	131	29	967	1367	--	13	1051	379	--	11	--	31				
		31	1933	1709	--	--	11	17	13	43	331	37	19	--	29	17	607	11	103	229	479	19	11	101	83	953	--	109	--	--	--	73	29	59	--	149	1907	17	13	1559	43	41	211	19	--	--	89	23	--	131				
		32	47	29	17	97	--	53	1283	389	--	--	67	13	61	19	31	--	--	11	13	163	--	263	19	--	--	73	29	59	--	--	--	--	--	11	19	151	109	--	13	--	47	29	--	11	--	67	11					
		33	19	1237	421	1021	13	563	--	--	11	17	--	107	--	11	37	71	13	47	23	227	--	17	--	--	31	43	11	13	37	419	11	41	1																			

Lehmer's table of factors (1909) (reconstruction, D. Roegel, 2011)

Table with columns for numbers and their prime factors. The table is organized into rows, each representing a range of numbers. Each row contains a sequence of numbers and their corresponding prime factors, with some numbers having multiple factors listed.

Lehmer's table of factors (1909) (reconstruction, D. Roegel, 2011)

Table with columns for numbers and their prime factors, organized in rows of 10 numbers each. The table covers the range from 5964 to 5989.

Lehmer's table of factors (1909) (reconstruction, D. Roegel, 2011)

Table with columns for numbers and their prime factors, organized in rows and columns. The table contains numerical data representing the factorization of integers in the range 5,985,000 to 6,006,000.

Lehmer's table of factors (1909) (reconstruction, D. Roegel, 2011)

Table with columns for numbers and their prime factors, organized in rows and columns. The table contains numerical data for the range 6006 to 9959.

Lehmer's table of factors (1909) (reconstruction, D. Roegel, 2011)

Table with columns for numbers (e.g., 287, 288, 289) and rows of factorization data. The table is organized into groups of rows, with the first column indicating the number being factored. Each row contains a sequence of numbers representing factors or related values.

Lehmer's table of factors (1909) (reconstruction, D. Roegel, 2011)

Table with 20 columns and 99 rows of numerical data, representing Lehmer's table of factors for the range 6048000 to 6069000.

Lehmer's table of factors (1909) (reconstruction, D. Roegel, 2011)

Table with columns for numbers 289-999 and rows for factors 2-29. Each cell contains a digit representing the presence of a factor.



Lehmer's table of factors (1909) (reconstruction, D. Roegel, 2011)

Table with columns for numbers and their prime factors. The table is organized into rows, each representing a range of numbers. Each row contains a sequence of numbers and their corresponding prime factors, with some numbers having multiple factors listed. The table is a reconstruction of Lehmer's 1909 work on factoring numbers.

Lehmer's table of factors (1909) (reconstruction, D. Roegel, 2011)

Table with 20 columns (numbered 1-20) and 20 rows (numbered 1-20). Each cell contains a list of integers representing factors of numbers in the range 6111000 to 6132000. The numbers are arranged in a grid-like pattern with some missing values indicated by dashes.

Lehmer's table of factors (1909) (reconstruction, D. Roegel, 2011)

Table with columns for numbers and their prime factors, organized in rows and columns. The table contains numerical data for the range 61320 to 61530.

Lehmer's table of factors (1909) (reconstruction, D. Roegel, 2011)

Table with columns for numbers and their prime factors, organized in rows and columns. The table contains numerical data for the range 6153000 to 6174000.

Lehmer's table of factors (1909) (reconstruction, D. Roegel, 2011)

Table with 34 columns (numbered 1-34) and 40 rows (numbered 61-94). Each cell contains a sequence of numbers representing factors, with some cells containing dashes to indicate missing or zero values.

Lehmer's table of factors (1909) (reconstruction, D. Roegel, 2011)

Table with columns for numbers and their prime factors. The table is organized into rows corresponding to the numbers 295 through 999. Each row contains the number followed by its prime factors in ascending order, separated by spaces. For example, row 295: 295 1 11 13 17 19 23 29 31 37 41 43 47 53 59 61 67 71 73 79 83 89 97 101 103 107 109 113 121 127 131 137 139 143 149 151 157 163 167 169 173 179 181 187 191 193 197 199 203. The table continues in this pattern up to row 999.

Lehmer's table of factors (1909) (reconstruction, D. Roegel, 2011)

Table with columns for numbers and their prime factors, organized in rows of 10 numbers each. The table covers the range from 296 to 999.

Lehmer's table of factors (1909) (reconstruction, D. Roegel, 2011)

Table with columns for numbers 297 to 999 and rows for factors. Each cell contains a list of prime factors for that number, separated by spaces. The table is organized into groups of 10 rows, labeled 62-37 on the left margin.



Lehmer's table of factors (1909) (reconstruction, D. Roegel, 2011)

Table with columns for numbers and their prime factors, organized in rows and columns. The table contains numerical data for the range 6 258 000 to 6 279 000.

Lehmer's table of factors (1909) (reconstruction, D. Roegel, 2011)

Table with 29 columns (numbered 299 to 999) and 29 rows (numbered 62 to 99). Each cell contains a sequence of integers representing factors of numbers in the range 6,279,000 to 6,300,000.

Lehmer's table of factors (1909) (reconstruction, D. Roegel, 2011)

Table with columns for numbers and their prime factors, organized in groups of 10 rows. Each row contains a number and its prime factors in a specific order.

Lehmer's table of factors (1909) (reconstruction, D. Roegel, 2011)

Table with columns for numbers and their prime factors, organized in rows and columns.

Lehmer's table of factors (1909) (reconstruction, D. Roegel, 2011)

Table with columns for numbers and their prime factors, organized in rows and columns. The table contains numerical data for the range 63420 to 99000.

Lehmer's table of factors (1909) (reconstruction, D. Roegel, 2011)

Table with columns for numbers and their prime factors. The table is organized into rows, with the first column indicating the number and subsequent columns listing its prime factors. The numbers range from 63,633 to 99,199. The factors are listed in ascending order for each number.

Lehmer's table of factors (1909) (reconstruction, D. Roegel, 2011)

Table with columns for numbers and their prime factors, organized in groups of 10 rows. Each row contains a number and its prime factorization.

Lehmer's table of factors (1909) (reconstruction, D. Roegel, 2011)

Table with columns for factor ranges (e.g., 64 005, 805, 11, 13, 17, 19, 23, 29, 31, 37, 41, 43, 47, 53, 59, 61, 67, 71, 73, 79, 83, 89, 97, 101, 103, 107, 109, 113, 121, 127, 131, 137, 139, 143, 149, 151, 157, 163, 167, 169, 173, 179, 181, 187, 191, 193, 197, 199, 209) and rows of numerical data representing factorizations.



Lehmer's table of factors (1909) (reconstruction, D. Roegel, 2011)

Table with columns for numbers and their prime factors, organized in rows and columns. The table contains numerical data for the range 6 426 000 to 6 447 000.

Lehmer's table of factors (1909) (reconstruction, D. Roegel, 2011)

Table with columns 1-100 and rows 64-99. Each cell contains a sequence of numbers representing factors, with some cells containing dashes to indicate missing or zero values.

Lehmer's table of factors (1909) (reconstruction, D. Roegel, 2011)

Table with columns for numbers and their prime factors, organized in rows and columns. The table contains numerical data for the range 6,468,000 to 6,489,000.

Lehmer's table of factors (1909) (reconstruction, D. Roegel, 2011)

Table with 20 columns (numbered 001-200) and 100 rows (numbered 64-99). Each cell contains a sequence of integers representing factors, with some cells containing dashes to indicate missing or zero values.

Lehmer's table of factors (1909) (reconstruction, D. Roegel, 2011)

Table with columns for numbers (310-309) and rows for factors (1-209). Each cell contains a list of prime factors for that number.

Lehmer's table of factors (1909) (reconstruction, D. Roegel, 2011)

Table with columns for numbers and their prime factors, organized in rows and columns. The table contains numerical data for the range 6531 to 9999.

Lehmer's table of factors (1909) (reconstruction, D. Roegel, 2011)

Table with columns for numbers and their prime factors. The table contains multiple rows of data, each representing a number and its decomposition into prime factors.

Lehmer's table of factors (1909) (reconstruction, D. Roegel, 2011)

Table with columns for numbers and their prime factors, organized in rows and columns.





Lehmer's table of factors (1909) (reconstruction, D. Roegel, 2011)

Table with columns for numbers and their prime factors, organized in rows and columns.

Lehmer's table of factors (1909) (reconstruction, D. Roegel, 2011)

Table with columns for numbers and their prime factors, organized in rows of 10 numbers each. The numbers range from 6636 to 99107. Factors are listed in columns, with some numbers having multiple factors.

Lehmer's table of factors (1909) (reconstruction, D. Roegel, 2011)

Table with columns for numbers and their prime factors. The table is organized into rows, with each row representing a range of numbers and their corresponding prime factors. The numbers are listed in the first column, and the factors are listed in subsequent columns. The table is a reconstruction of Lehmer's 1909 work on factoring numbers.

Lehmer's table of factors (1909) (reconstruction, D. Roegel, 2011)

Table with columns for numbers and their prime factors, organized in rows of 20 columns each. The table covers the range from 6678 to 9929.

Lehmer's table of factors (1909) (reconstruction, D. Roegel, 2011)

Table with columns for numbers and their prime factors, organized in rows and columns. The table contains numerical data representing the factorization of numbers in the range 6,699,000 to 6,720,000.

Lehmer's table of factors (1909) (reconstruction, D. Roegel, 2011)

Table with 40 rows and 100 columns, containing numerical data for Lehmer's table of factors. Each row represents a number and its prime factors, with some cells containing multiple values separated by spaces.





Lehmer's table of factors (1909) (reconstruction, D. Roegel, 2011)

Table with columns for numbers and their prime factors, organized in rows and columns. The table contains numerical data for the range 6,762,000 to 6,783,000.

Lehmer's table of factors (1909) (reconstruction, D. Roegel, 2011)

Table with columns for numbers and their prime factors, organized in rows and columns. The table contains numerical data for the range 6783 to 9917.

Lehmer's table of factors (1909) (reconstruction, D. Roegel, 2011)

Table with columns for numbers and their prime factors, organized in rows and columns. The table contains numerical data representing the factorization of integers in the range 6,804,000 to 6,825,000.

Lehmer's table of factors (1909) (reconstruction, D. Roegel, 2011)

Table with columns for numbers and their prime factors, organized in rows and columns. The table contains numerical data for the range 6825 to 9989.

Lehmer's table of factors (1909) (reconstruction, D. Roegel, 2011)

Table with columns for numbers 6846 to 9999 and rows for factors. The table contains a grid of numerical data representing the prime factors of integers in the specified range.

Lehmer's table of factors (1909) (reconstruction, D. Roegel, 2011)

Table with columns for numbers and their prime factors, organized in rows and columns. The table contains numerical data for the range 6867 to 9999.

Lehmer's table of factors (1909) (reconstruction, D. Roegel, 2011)

Table with columns for numbers and their prime factors. The table is organized into rows, each representing a range of numbers. Each row contains a sequence of numbers and their corresponding prime factors, with some numbers having multiple factors listed. The table is a reconstruction of Lehmer's original work on factoring numbers in the range 6,888,000 to 6,909,000.

Lehmer's table of factors (1909) (reconstruction, D. Roegel, 2011)

Table with columns for numbers and their prime factors, organized in rows and columns.



Lehmer's table of factors (1909) (reconstruction, D. Roegel, 2011)

Table with columns for numbers and their prime factors, organized in rows and columns. The table contains numerical data for the range 6930 to 9950.

Lehmer's table of factors (1909) (reconstruction, D. Roegel, 2011)

Table with columns for numbers and their prime factors, organized in rows of 10 numbers each. The table covers the range from 6951 to 9920.

Lehmer's table of factors (1909) (reconstruction, D. Roegel, 2011)

Table with columns for numbers and their prime factors, organized in rows and columns. The table contains numerical data for the range 6972000 to 6993000.

Lehmer's table of factors (1909) (reconstruction, D. Roegel, 2011)

Table with columns for numbers and their prime factors, organized in rows and columns. The table contains numerical data for the range 6993 to 7014.

Lehmer's table of factors (1909) (reconstruction, D. Roegel, 2011)

Table with columns for numbers 7014-7035 and rows for factors. Each cell contains a list of prime factors for that number.

Lehmer's table of factors (1909) (reconstruction, D. Roegel, 2011)

Table with columns for numbers and their prime factors, organized in groups of 10 rows. Each row contains a number and its prime factorization.

Lehmer's table of factors (1909) (reconstruction, D. Roegel, 2011)

Table with columns for numbers 336 to 99 and rows for factors 1 to 209. Each cell contains a small integer representing a factor or zero.

Lehmer's table of factors (1909) (reconstruction, D. Roegel, 2011)

Table with columns for numbers and their prime factors, organized in rows and columns. The table contains numerical data for the range 7077000 to 7098000.



Lehmer's table of factors (1909) (reconstruction, D. Roegel, 2011)

Table with columns for numbers and their prime factors, organized in rows and columns. The table contains numerical data for the range 7098 to 99.

Lehmer's table of factors (1909) (reconstruction, D. Roegel, 2011)

Table with columns for numbers and their prime factors, organized in rows and columns. The table contains numerical data for the range 7119 to 99101.

Lehmer's table of factors (1909) (reconstruction, D. Roegel, 2011)

Table with columns for numbers and their prime factors, organized in rows and columns. The table contains numerical data for the range 7140000 to 7161000.

Lehmer's table of factors (1909) (reconstruction, D. Roegel, 2011)

Table with columns for numbers and their prime factors, organized in rows and columns. The table contains numerical data for the range 7161 to 9919.

Lehmer's table of factors (1909) (reconstruction, D. Roegel, 2011)

Table with 40 columns (numbered 1-40) and rows grouped by 10s (71-80, 81-90, 91-100, 101-110, 111-120). Each row contains 40 numerical values representing factorizations in Lehmer's notation.

Lehmer's table of factors (1909) (reconstruction, D. Roegel, 2011)

Table with 34 columns and 1000 rows of numerical data, representing Lehmer's table of factors for the range 7 203 000 to 7 224 000.

Lehmer's table of factors (1909) (reconstruction, D. Roegel, 2011)

Table with columns for numbers and their prime factors. The table is organized into rows, each representing a range of numbers. Each row contains a sequence of numbers and their corresponding prime factors, with some numbers having multiple factors listed. The table is a reconstruction of Lehmer's 1909 work on factoring numbers.

Lehmer's table of factors (1909) (reconstruction, D. Roegel, 2011)

Table with columns for numbers 345 to 99 and rows for factors 1 to 209. The table contains numerical data representing the factorization of numbers in the range 7245000 to 7266000.



Lehmer's table of factors (1909) (reconstruction, D. Roegel, 2011)

Table with columns for numbers 346 to 99 and rows for factors 1 to 100. Each cell contains a factor or a dash indicating no factor.

Lehmer's table of factors (1909) (reconstruction, D. Roegel, 2011)

Table with columns for numbers and their prime factors, organized in rows and columns. The table contains numerical data for the range 7287 to 99293.

Lehmer's table of factors (1909) (reconstruction, D. Roegel, 2011)

Table with columns for numbers and their prime factors. The table is organized into rows, each representing a range of numbers. Each row contains a sequence of numbers and their corresponding prime factors, with some numbers having multiple factors listed. The table is a reconstruction of Lehmer's 1909 work on factoring numbers.

Lehmer's table of factors (1909) (reconstruction, D. Roegel, 2011)

Table with columns for factor ranges (e.g., 349-11, 11-13, 13-17) and rows for numbers (e.g., 73-29, 30-5, 31-10, 32-15, 33-20, 34-24, 35-29, 36-34, 37-39, 38-43, 39-48, 40-53, 41-58, 42-62, 43-68, 44-72, 45-77, 46-81, 47-87, 48-91, 49-96). Each cell contains a list of prime factors.

Lehmer's table of factors (1909) (reconstruction, D. Roegel, 2011)

Table with columns for numbers 350 to 999 and rows for factors. Each cell contains a list of prime factors for that number.

Lehmer's table of factors (1909) (reconstruction, D. Roegel, 2011)

Table with columns for numbers and their prime factors, organized in rows and columns. The table contains numerical data for the range 7371 to 9911.

Lehmer's table of factors (1909) (reconstruction, D. Roegel, 2011)

Table with columns for numbers and their prime factors. The table is organized into rows corresponding to the numbers 73 92 through 99. Each row contains a sequence of numbers and their prime factors, with some numbers having multiple factors listed.

Lehmer's table of factors (1909) (reconstruction, D. Roegel, 2011)

Table with columns for numbers and their prime factors, organized in rows of 10 numbers each. The numbers range from 7413 to 99919. Factors are listed in columns, with some numbers having multiple factors.



Lehmer's table of factors (1909) (reconstruction, D. Roegel, 2011)

Table with columns for numbers and their prime factors, organized in rows and columns. The table contains numerical data for the range 7434000 to 7455000.

Lehmer's table of factors (1909) (reconstruction, D. Roegel, 2011)

Table with columns for numbers and their prime factors, organized in rows of 10 numbers each. The numbers range from 74,550 to 99,240. Factors are listed in columns, with some numbers having multiple columns of factors.

Lehmer's table of factors (1909) (reconstruction, D. Roegel, 2011)

Table with columns for numbers and their prime factors, organized in groups of 10 rows. Each row contains a number followed by its prime factors in ascending order.

Lehmer's table of factors (1909) (reconstruction, D. Roegel, 2011)

Table with columns for numbers and their prime factors, organized in rows and columns. The table contains numerical data representing the factorization of integers in the range 7,497,000 to 7,518,000.

Lehmer's table of factors (1909) (reconstruction, D. Roegel, 2011)

Table with columns for numbers and their prime factors, organized in groups of 10 rows. Each row contains a number and its prime factors in a specific order.

Lehmer's table of factors (1909) (reconstruction, D. Roegel, 2011)

Table with columns for numbers (359-999) and their prime factors. Each row represents a number and its decomposition into prime factors.

Lehmer's table of factors (1909) (reconstruction, D. Roegel, 2011)

Table with columns for numbers and their prime factors, organized in rows and columns.

Lehmer's table of factors (1909) (reconstruction, D. Roegel, 2011)

Table with columns for numbers and their prime factors. The table is organized into rows, with each row representing a range of numbers. The columns contain the numbers and their corresponding prime factors, often with exponents. The table is a reconstruction of Lehmer's 1909 work on factoring numbers.



Lehmer's table of factors (1909) (reconstruction, D. Roegel, 2011)

Table with columns for numbers and their prime factors, organized in rows and columns. The table contains numerical data for the range 7 602 000 to 7 623 000.

Lehmer's table of factors (1909) (reconstruction, D. Roegel, 2011)

Table with columns for numbers 76-99 and rows for factors 1-209. The table contains a grid of numbers representing factors of integers in the range 7623000 to 7644000.

Lehmer's table of factors (1909) (reconstruction, D. Roegel, 2011)

Table with columns for numbers and their prime factors. The table is organized into rows, each representing a range of numbers. Each row contains a sequence of numbers and their corresponding prime factors, with some numbers having multiple factors listed. The table is a reconstruction of Lehmer's 1909 work on factoring numbers.

Lehmer's table of factors (1909) (reconstruction, D. Roegel, 2011)

Table with columns for numbers and their prime factors, organized in rows and columns. The table contains numerical data for the range 7665000 to 7686000.

Lehmer's table of factors (1909) (reconstruction, D. Roegel, 2011)

Table with columns for numbers and their prime factors. The table is organized into rows, each representing a range of numbers. Each row contains a sequence of numbers and their corresponding prime factors, with some numbers having multiple factors listed.

Lehmer's table of factors (1909) (reconstruction, D. Roegel, 2011)

Table with columns for numbers and their prime factors, organized in rows and columns. The table contains numerical data for the range 7 707 000 to 7 728 000.

Lehmer's table of factors (1909) (reconstruction, D. Roegel, 2011)

Table with columns for numbers and their prime factors, organized in rows and columns. The table contains numerical data for the range 7728 to 9931.

Lehmer's table of factors (1909) (reconstruction, D. Roegel, 2011)

Table with columns for numbers and their prime factors, organized in rows and columns. The table contains numerical data for the range 7749000 to 7770000.



Lehmer's table of factors (1909) (reconstruction, D. Roegel, 2011)

Table with columns for numbers 370-999 and rows for factors. Each cell contains a list of prime factors for that number, separated by spaces. The table is a grid of numbers and their prime decompositions.

Lehmer's table of factors (1909) (reconstruction, D. Roegel, 2011)

Table with 37 columns (numbered 1-37) and 21 rows (numbered 77-111). Each cell contains a sequence of integers representing prime factors or other numerical data for that row.

Lehmer's table of factors (1909) (reconstruction, D. Roegel, 2011)

78	12	0	--	47	11	41	23	--	113	31	--	53	83	101	991	19	17	--	79	11	1051	97	19	11	13	29	--	11	29	--	59	--	109	37	1559	127	23	17	11	--	19	--	113	183	--	239	17	19	47	61	
		1	11	--	29	--	307	11	--	73	--	2293	53	233	41	1087	769	11	29	43	--	47	11	--	13	--	1381	--	61	13	23	--	--	1447	53	--	17	2551	--	17	1751	37	31	587	--	11	--	23	433	11	
		2	--	11	23	1319	19	467	--	101	--	--	--	13	191	23	47	--	13	--	17	41	149	--	--	431	19	31	--	73	11	79	--	--	1069	13	19	11	13	--	13	--	2127	383	19	43	29	17			
		3	11	549	281	13	101	13	149	--	97	97	53	403	61	--	61	13	--	61	13	31	--	--	--	431	19	31	--	73	11	79	--	--	1069	13	19	11	13	--	13	--	2127	383	19	43	29	17			
		4	--	173	13	103	79	1493	11	17	--	13	13	11	31	--	--	17	127	29	--	11	61	--	--	11	61	--	353	--	13	--	19	29	17	--	2467	707	757	11	--	19	13	--	23	107	--	13	449		
		5	139	--	61	--	11	--	163	17	--	11	29	523	--	--	13	1753	19	--	47	31	29	--	--	11	113	2347	179	--	--	761	233	59	19	11	53	--	17	193	11	43	373	19	--	13	11				
		6	23	31	13	--	--	491	11	--	--	23	19	17	1069	37	--	11	67	--	--	307	--	--	--	--	719	1511	17	2731	--	--	11	13	73	41	--	--	19	13	--	29	97	--	31	--	1779				
		7	--	13	--	11	17	41	29	1361	13	--	--	17	179	11	23	19	2399	37	11	13	227	257	43	89	19	23	17	11	601	67	47	--	--	11	71	239	--	13	--	31	--	41	--	883	--	2029			
		8	6	31	--	17	37	--	47	149	--	--	17	17	41	13	1223	13	--	47	149	--	29	13	--	23	13	--	19	79	11	13	--	59	--	113	53	29	--	11	13	--	883	13	--	563	33	153			
		9	31	59	41	--	--	283	37	19	11	17	89	--	241	11	23	--	593	29	79	--	--	--	193	11	19	17	43	--	293	29	13	97	17	61	2303	71	13	163	11	113	137	307	31	--	23	151			
		10	1	17	19	1063	--	--	787	1237	13	29	37	67	11	557	--	53	229	--	47	13	71	1163	31	17	--	13	11	--	23	41	17	--	457	--	--	11	19	47	101	23	11	13	13	--	11	19			
		11	29	--	11	967	281	853	13	--	43	333	359	1217	37	29	--	19	--	163	11	--	197	17	--	13	2389	1291	73	37	17	277	31	19	349	431	89	71	11	53	--	19	311	--	23	103	17	43			
		12	11	107	83	109	1801	11	23	1787	--	--	19	13	331	--	11	2741	--	13	149	11	137	389	--	--	1567	--	23	--	13	1847	29	--	--	313	13	--	23	--	337	83	--	1010	17	29	11	13			
		13	587	11	--	17	--	1283	31	1879	--	61	--	43	--	--	53	2659	601	--	67	--	271	47	13	--	499	71	--	49	--	11	--	--	37	41	61	--	71	53	19	13	11	--	--	173	11				
		14	--	17	--	1123	107	13	--	463	--	43	11	2207	1249	97	--	53	--	83	823	--	73	1063	19	29	--	17	19	37	181	13	--	491	29	181	19	17	--	37	1301	2707	47	13	17	--	31	41	11	1367	193
		15	15	--	73	--	1871	--	107	89	11	197	109	23	11	1439	1229	433	13	211	79	23	11	19	--	17	61	--	1583	571	--	--	19	43	307	13	73	11	31	179	431	13	23	--	--	1193	769	67	17		
		16	163	--	--	23	11	227	241	79	--	11	19	2749	29	113	--	17	13	53	137	--	701	13	17	--	11	23	37	101	2039	--	149	--	13	349	157	--	11	23	281	--	17	11	2647	--	13	71	--	2129	
		17	263	97	47	13	--	19	11	107	23	283	13	67	--	--	17	43	--	11	1117	23	--	59	--	--	1427	101	13	787	--	19	11	89	--	--	17	--	397	13	809	31	653	29	--	17	13				
		18	--	23	--	11	--	773	43	--	13	--	541	983	--	11	13	--	131	19	11	17	29	383	23	--	251	71	691	11	151	37	--	313	11	157	17	--	103	41	47	127	173	17	11	13	733	--			
		19	37	41	13	--	--	163	67	23	83	823	--	73	1063	19	29	--	11	109	53	--	--	29	13	23	--	149	113	1043	--	--	563	13	--	37	17	47	43	--	13	19	--	11	71	79	73	1153	11		
		20	19	13	37	--	--	1361	491	761	11	47	17	13	37	--	11	59	--	--	29	13	23	--	--	29	13	--	11	193	31	179	--	--	2161	79	23	2339	599	61	41	13	11	223	17	557	53	11	13		
		21	43	67	--	--	19	31	--	1151	17	233	271	11	--	127	13	--	17	2687	1373	53	109	359	--	--	1277	--	11	--	1451	--	--	13	349	157	--	11	23	281	--	17	11	2647	--	13	71	--	41		
		22	73	29	11	--	131	--	17	19	--	277	--	--	13	31	--	41	101	11	--	41	101	11	--	--	109	11	61	--	19	821	29	179	13	--	197	167	19	--	13	11	--	1907	--	53	79	151	223	463	
		23	11	43	--	19	23	11	31	269	157	--	17	--	17	--	11	131	347	541	13	11	43	--	--	41	13	139	643	17	19	61	59	239	29	--	23	47	--	--	13	--	53	37	11	1181					
		24	11	11	11	19	17	13	13	13	653	13	13	13	13	13	13	13	13	13	13	13	13	13	13	13	13	13	13	13	13	13	13	13	13	13	13	13	13	13	13	13	13	13	13	13	13	13	13	13	
		25	13	--	17	--	29	439	--	523	79	11	17	13	23	--	163	1013	37	13	61	211	41	73	--	43	11	31	109	2633	11	--	337	--	17	23	13	383	19	--	41	727	167	59	29	11	--	13			
		26	26	--	37	--	997	--	--	11	73	17	--	--	11	593	83	107	19	293	23	2153	31	11	571	13	2789	17	--	2539	--	2791	71	--	17	--	31	29	11	67	1579	379	--	13	661	47	227	1951	53	1229	
		27	17	--	19	83	11	13	61	43	373	11	1319	659	23	1193	509	2029	107	--	761	19	37	13	17	11	2693	2549	29	13	313	17	--	--	11	499	--	41	11	13	193	2347	23	--	--	--	--				
		28	28	71	553	--	251	457	--	11	19	863	31	2467	13	47	--	269	--	11	43	--	163	17	--	31	19	37	127	--	617	17	2671	11	29	67	13	--	173	467	--	1429	1861	--	1031	79	17	1999			
		29	31	81	13	13	23	13	23	13	23	13	23	13	23	13	23	13	23	13	23	13	23	13	23	13	23	13	23	13	23	13	23	13	23	13	23	13	23	13	23	13	23	13	23	13	23	13	23		
		30	30	683	--	29	13	1097	--	19	41	--	2399	13	--	--	37	19	11	73	--	89	43	--	53	47	239	601	23	13	313	61	11	167	19	71	--	13	31	11	17	97	1153	47	241	11	11	67			
		31	31	101	17	2441	1279	2213	1427	1993	31	11	13	61	19	--	11	1889	13	37	113																														

Lehmer's table of factors (1909) (reconstruction, D. Roegel, 2011)

Table with columns for numbers and their prime factors, organized in rows and columns. The table contains numerical data for the range 7 833 000 to 7 854 000.

Lehmer's table of factors (1909) (reconstruction, D. Roegel, 2011)

Table with columns for numbers 374 to 99 and rows for factors 1 to 209. The table contains numerical data representing factorizations for each number in the range.

Lehmer's table of factors (1909) (reconstruction, D. Roegel, 2011)

Table with 35 columns and 95 rows of numerical data, representing Lehmer's table of factors for numbers between 7,875,000 and 7,896,000.

Lehmer's table of factors (1909) (reconstruction, D. Roegel, 2011)

Table with columns for numbers and their prime factors. The table is organized into rows corresponding to the numbers 376 through 99. Each row contains the number followed by its prime factors in ascending order, separated by spaces. The factors are listed in a compact, space-efficient format.

Lehmer's table of factors (1909) (reconstruction, D. Roegel, 2011)

Table with columns for numbers and their prime factors. The table is organized into rows, each representing a range of numbers. Each row contains a sequence of numbers and their corresponding prime factors, with some numbers having multiple factors listed. The table is a reconstruction of Lehmer's 1909 work on factoring numbers.



Lehmer's table of factors (1909) (reconstruction, D. Roegel, 2011)

Table with columns for numbers and their prime factors, organized in rows and columns. The table contains numerical data for the range 7,938,000 to 7,959,000.

Lehmer's table of factors (1909) (reconstruction, D. Roegel, 2011)

Table with columns for numbers 79 509 to 99 199 and rows of factor data. Each row contains a sequence of numbers representing factors or related values for a specific integer.

Lehmer's table of factors (1909) (reconstruction, D. Roegel, 2011)

Table with columns for numbers 7980-8000 and rows for factors. Each cell contains a list of prime factors for that number.

Lehmer's table of factors (1909) (reconstruction, D. Roegel, 2011)

Table with 100 columns (numbered 01-100) and 100 rows (numbered 01-100). Each cell contains a sequence of integers representing factors. The table is a Lehmer's table of factors, showing the prime factors of numbers in the range 8001000 to 8022000. The numbers are arranged in a grid, with rows and columns corresponding to the numbers. The factors are listed in the cells, with some numbers having multiple factors. The table is a reconstruction of Lehmer's original work, showing the prime factors of numbers in the range 8001000 to 8022000.

Lehmer's table of factors (1909) (reconstruction, D. Roegel, 2011)

Table with columns for numbers and their prime factors, organized in rows and columns. The table contains numerical data for the range 8022000 to 8043000.

Lehmer's table of factors (1909) (reconstruction, D. Roegel, 2011)

Table with columns for numbers and their prime factors. The table is organized into rows, each representing a range of numbers. Each row contains a sequence of numbers and their corresponding prime factors, with some numbers having multiple factors listed.

Lehmer's table of factors (1909) (reconstruction, D. Roegel, 2011)

Table with columns for numbers and their prime factors. The table is organized into rows, each starting with a number and followed by its prime factors. The numbers range from 8064 to 9911. The factors are listed in a compact, space-separated format.

Lehmer's table of factors (1909) (reconstruction, D. Roegel, 2011)

Table with columns for numbers and their prime factors, organized in rows and columns. The table contains numerical data for the range 8085 to 99103.



Lehmer's table of factors (1909) (reconstruction, D. Roegel, 2011)

Table with 38 columns (numbered 1-38) and 26 rows (numbered 1-26). Each cell contains a sequence of integers representing factors or values for a specific number in the range 81060 to 81850. The numbers are arranged in a grid format with row and column indices.

Lehmer's table of factors (1909) (reconstruction, D. Roegel, 2011)

Table with columns for numbers and their prime factors, organized in rows and columns. The table contains numerical data representing the factorization of integers in the range 81270 to 81439.

Lehmer's table of factors (1909) (reconstruction, D. Roegel, 2011)

Table with columns for numbers and their prime factors. The table is organized into rows, with the first column containing the number and subsequent columns containing its prime factors. The numbers range from 888 to 999. The factors are listed in ascending order of size.

Lehmer's table of factors (1909) (reconstruction, D. Roegel, 2011)

Table with columns for numbers 81-89 and rows for factors 1-100. Each cell contains a digit representing a factor or zero.

Lehmer's table of factors (1909) (reconstruction, D. Roegel, 2011)

Table with columns for numbers and their prime factors, organized in rows and columns. The table contains numerical data for the range 81,900 to 99,999.

Lehmer's table of factors (1909) (reconstruction, D. Roegel, 2011)

Table with columns for numbers and their prime factors, organized in rows of 10 numbers each. The numbers range from 82,111 to 99,173. Factors are listed in columns, with some numbers having multiple factors in a single column.

Lehmer's table of factors (1909) (reconstruction, D. Roegel, 2011)

Table with columns for numbers 82-99 and rows for factors 1-209. Each cell contains a number representing a factor or its frequency.

Lehmer's table of factors (1909) (reconstruction, D. Roegel, 2011)

Table with columns for numbers and their factors, organized in rows. The table contains numerical data for the range 8253 to 9999.



Lehmer's table of factors (1909) (reconstruction, D. Roegel, 2011)

Table with columns for numbers and their prime factors, organized in rows and columns. The table contains numerical data for the range 8274 to 99109.

Lehmer's table of factors (1909) (reconstruction, D. Roegel, 2011)

Table with columns for numbers (825-99) and rows for factors (1-37). Each cell contains a number or a dash, representing the factorization of the number in the column by the factor in the row.

Lehmer's table of factors (1909) (reconstruction, D. Roegel, 2011)

Table with columns for numbers and their prime factors, organized in groups of 10 rows. Each row contains a number and its prime factors in a specific order.

Lehmer's table of factors (1909) (reconstruction, D. Roegel, 2011)

Table with 100 columns (numbered 1-100) and 100 rows (numbered 1-100). Each cell contains a small integer representing a factor or value in Lehmer's table.

Lehmer's table of factors (1909) (reconstruction, D. Roegel, 2011)

Table with 100 rows and 100 columns of numerical data, representing Lehmer's table of factors for numbers 8358 to 9919. Each row contains a sequence of numbers, with some cells containing multiple values separated by spaces.

Lehmer's table of factors (1909) (reconstruction, D. Roegel, 2011)

Table with columns for numbers and their prime factors, organized in rows and columns. The table contains numerical data for the range 8379 to 9931.

Lehmer's table of factors (1909) (reconstruction, D. Roegel, 2011)

Table with 40 columns and 40 rows of numerical data, representing Lehmer's table of factors. Each row contains a sequence of numbers, likely representing prime factors or related values for a specific range of integers.

Lehmer's table of factors (1909) (reconstruction, D. Roegel, 2011)

Table with columns for numbers and their prime factors, organized in rows of 20 numbers each. The table contains a dense grid of numerical data representing the factorization of integers from 8421 to 9999.



Lehmer's table of factors (1909) (reconstruction, D. Roegel, 2011)

Table with columns for numbers and their prime factors, organized in groups of 10 rows. Each row contains a number followed by its prime factors in ascending order.

Lehmer's table of factors (1909) (reconstruction, D. Roegel, 2011)

Table with columns for numbers and their prime factors, organized in groups of 10 rows. Each row contains a number and its prime factorization.

Lehmer's table of factors (1909) (reconstruction, D. Roegel, 2011)

Table with columns for numbers and their prime factors, organized in rows and columns. The table contains numerical data for the range 8484 to 9947.

Lehmer's table of factors (1909) (reconstruction, D. Roegel, 2011)

Table with columns for numbers (805-99) and rows for factors (05-25). Each cell contains a list of prime factors for that number.

Lehmer's table of factors (1909) (reconstruction, D. Roegel, 2011)

Table with 20 columns (numbered 1-20) and 100 rows (numbered 26-46). Each cell contains a sequence of integers representing factors. The table is a reconstruction of Lehmer's 1909 work on factoring numbers in the range 8,526,000 to 8,547,000.

Lehmer's table of factors (1909) (reconstruction, D. Roegel, 2011)

Table with columns for numbers and their prime factors, organized in rows and columns.

Lehmer's table of factors (1909) (reconstruction, D. Roegel, 2011)

Table with columns for numbers and their prime factors, organized in rows and columns.

Lehmer's table of factors (1909) (reconstruction, D. Roegel, 2011)

Table with columns for numbers 85-89 and rows for factors. Each cell contains a list of prime factors for a specific number. The table is organized into groups of 5 rows for each number, with the first row of each group containing the number and its prime factors.



Lehmer's table of factors (1909) (reconstruction, D. Roegel, 2011)

Table with 30 rows and 40 columns of numerical data, representing Lehmer's table of factors for the range 8 610 000 to 8 631 000. Each row contains a sequence of numbers, with some cells containing dashes to indicate missing or zero values.

Lehmer's table of factors (1909) (reconstruction, D. Roegel, 2011)

Table with columns for numbers and their prime factors, organized in rows of 10 numbers each. The table covers the range from 8631 to 9999.

Lehmer's table of factors (1909) (reconstruction, D. Roegel, 2011)

Table with columns for numbers 412-99 and rows for factors 1-99. Each cell contains a list of prime factors for that number.

Lehmer's table of factors (1909) (reconstruction, D. Roegel, 2011)

Table with columns for numbers and their prime factors, organized in rows and columns. The table contains numerical data for the range 8673000 to 8694000.

Lehmer's table of factors (1909) (reconstruction, D. Roegel, 2011)

A large grid table with columns numbered 1-100 and rows numbered 86-99. Each cell contains numerical data representing factors or values.

Lehmer's table of factors (1909) (reconstruction, D. Roegel, 2011)

Table with columns for numbers (e.g., 87, 85, 16, 17, 18, 19, 20, 21, 22, 23, 24, 25, 26, 27, 28, 29, 30, 31, 32, 33, 34, 35) and rows of numerical data representing factors and their frequencies.

Lehmer's table of factors (1909) (reconstruction, D. Roegel, 2011)

Table with columns for numbers and their prime factors. The table is organized into rows, each representing a range of numbers. Each row contains the number and its prime factors in a specific order. The numbers range from 87,360 to 99,217. The factors are listed as small integers, often with a '+' sign indicating a specific factorization path or property.

Lehmer's table of factors (1909) (reconstruction, D. Roegel, 2011)

Table with columns for numbers and their prime factors, organized in rows and columns. The table contains numerical data for the range 8,757,000 to 8,778,000.



Lehmer's table of factors (1909) (reconstruction, D. Roegel, 2011)

Table with columns for numbers and their prime factors, organized in rows and columns. The table contains numerical data for the range 8778 to 9959.

Lehmer's table of factors (1909) (reconstruction, D. Roegel, 2011)

Table with columns for factor ranges (e.g., 87-89, 88-90) and rows of numerical data representing factorizations and other mathematical values.

Lehmer's table of factors (1909) (reconstruction, D. Roegel, 2011)

Table with columns for numbers 88-80 and rows for factors 2-209. Each cell contains a small table of numbers representing factors and their multiplicities.

Lehmer's table of factors (1909) (reconstruction, D. Roegel, 2011)

Table with columns for numbers and their prime factors, organized in rows of 20 numbers each. The table covers the range from 8841 to 9929.

Lehmer's table of factors (1909) (reconstruction, D. Roegel, 2011)

Table with columns for numbers and their prime factors, organized in rows and columns. The table contains numerical data for the range 8862 to 99163.

Lehmer's table of factors (1909) (reconstruction, D. Roegel, 2011)

Table with columns for numbers and their prime factors. The table is organized into rows, with the first column indicating the number and subsequent columns listing its prime factors. The numbers range from 88 830 to 89 000.

Lehmer's table of factors (1909) (reconstruction, D. Roegel, 2011)

Table with 100 columns and 100 rows of numerical data, representing Lehmer's table of factors for the range 8 904 000 to 8 925 000.

Lehmer's table of factors (1909) (reconstruction, D. Roegel, 2011)

Table with columns for numbers and their prime factors. The table is organized into rows, each representing a range of numbers. Each row contains a sequence of numbers and their corresponding prime factors, with some numbers having multiple factors listed. The table is a reconstruction of Lehmer's 1909 work on factoring numbers.



Lehmer's table of factors (1909) (reconstruction, D. Roegel, 2011)

Table with columns for numbers and their prime factors, organized in rows and columns. The table contains numerical data for the range 8,946,000 to 8,967,000.

Lehmer's table of factors (1909) (reconstruction, D. Roegel, 2011)

Table with 40 columns and 99 rows of numerical data, representing Lehmer's table of factors for the range 8 967 000 to 8 988 000.

Lehmer's table of factors (1909) (reconstruction, D. Roegel, 2011)

Table with 20 columns (numbered 01 to 20) and 100 rows (numbered 80 to 99). Each cell contains integers representing factors of numbers in the range 8988000-9009000. The table is a Lehmer sieve table used for factoring integers.

Lehmer's table of factors (1909) (reconstruction, D. Roegel, 2011)

Table with columns for numbers and their prime factors, organized in rows and columns. The table contains numerical data for the range 9009 to 9030.

Lehmer's table of factors (1909) (reconstruction, D. Roegel, 2011)

Table with columns for numbers and their prime factors. The table is organized into rows, with the first column indicating the number and subsequent columns listing its prime factors. The numbers range from 9030 to 9999.

Lehmer's table of factors (1909) (reconstruction, D. Roegel, 2011)

Table with columns for numbers and their prime factors, organized in rows and columns. The table contains numerical data for the range 9051 to 9072000.

Lehmer's table of factors (1909) (reconstruction, D. Roegel, 2011)

Table with columns for numbers 9072 to 9099 and rows for factors 1 to 100. Each cell contains a small integer representing the factor of the corresponding number.

Lehmer's table of factors (1909) (reconstruction, D. Roegel, 2011)

Table with columns for numbers and their prime factors. The table is organized into rows, with the first column indicating the number and subsequent columns listing its prime factors. The numbers range from 9093 to 9999. The factors are listed in ascending order for each number.



Lehmer's table of factors (1909) (reconstruction, D. Roegel, 2011)

Table with columns for numbers and their prime factors, organized in rows and columns.

Lehmer's table of factors (1909) (reconstruction, D. Roegel, 2011)

Table with columns for numbers (rows) and factors (columns). The first column contains numbers from 9135 to 99139. Subsequent columns contain prime factors of these numbers, such as 17, 11, 13, 17, 19, 23, 29, 31, 37, etc.

Lehmer's table of factors (1909) (reconstruction, D. Roegel, 2011)

Table with columns for numbers 436-919 and rows for factors 1-209. The table contains numerical data representing the factorization of integers in the range 9156000 to 9177000.

Lehmer's table of factors (1909) (reconstruction, D. Roegel, 2011)

Table with 40 columns and 100 rows of numerical data, representing Lehmer's table of factors for the range 9 177 000 to 9 198 000.

Lehmer's table of factors (1909) (reconstruction, D. Roegel, 2011)

Table with columns for numbers and their prime factors, organized in groups of 10 rows. Each row contains a number and its prime factors in ascending order.

Lehmer's table of factors (1909) (reconstruction, D. Roegel, 2011)

Table with columns for numbers 439-919 and rows for factors 1-37. The table contains numerical data representing the factorization of integers in the range 9 219 000 to 9 240 000.

Lehmer's table of factors (1909) (reconstruction, D. Roegel, 2011)

Table with columns for numbers and their prime factors. The table is organized into rows, each representing a range of numbers. Each row contains a sequence of numbers and their corresponding prime factors, with some numbers having multiple factors listed.

Lehmer's table of factors (1909) (reconstruction, D. Roegel, 2011)

Table with columns for numbers 92-99 and rows for factors 1-100. Each cell contains a small integer representing the factor of the number in the column.



Lehmer's table of factors (1909) (reconstruction, D. Roegel, 2011)

Table with columns for numbers and their prime factors, organized in rows and columns.

Lehmer's table of factors (1909) (reconstruction, D. Roegel, 2011)

Table with columns for numbers and their prime factors, organized in rows and columns. The table contains numerical data for the range 9303 to 9290.

Lehmer's table of factors (1909) (reconstruction, D. Roegel, 2011)

Table with columns for numbers and their prime factors, organized in rows and columns. The table contains numerical data representing the factorization of integers from 93,240 to 99,269.

Lehmer's table of factors (1909) (reconstruction, D. Roegel, 2011)

Table with columns for numbers and their prime factors, organized in rows and columns.

Lehmer's table of factors (1909) (reconstruction, D. Roegel, 2011)

Table with columns for numbers and their prime factors, organized in rows and columns. The table contains numerical data for the range 9366 to 9387.

Lehmer's table of factors (1909) (reconstruction, D. Roegel, 2011)

Table with columns for numbers and their prime factors, organized in rows and columns.

Lehmer's table of factors (1909) (reconstruction, D. Roegel, 2011)

Table with 40 columns and 99 rows of numerical data, representing Lehmer's table of factors. Each row contains a sequence of integers, with some cells containing multiple values separated by spaces. The rows are indexed from 04 to 28, and the columns from 1 to 40.

Lehmer's table of factors (1909) (reconstruction, D. Roegel, 2011)

Table with columns for numbers and their prime factors. The table is organized into rows, with the first column indicating the number and subsequent columns listing its prime factors. The numbers range from 9429 to 9913.



Lehmer's table of factors (1909) (reconstruction, D. Roegel, 2011)

Table with columns for numbers 94500-94700 and rows for factors. Each row contains a list of prime factors for a specific number, with some numbers having multiple rows of factors.

Lehmer's table of factors (1909) (reconstruction, D. Roegel, 2011)

Table with columns for numbers and their prime factors. The table is organized into rows, each representing a range of numbers. Each row contains a sequence of numbers and their corresponding prime factors, with some numbers having multiple factors listed.

Lehmer's table of factors (1909) (reconstruction, D. Roegel, 2011)

Table with columns for numbers and their prime factors, organized in rows and columns. The table contains numerical data for the range 9 492 000 to 9 513 000.

Lehmer's table of factors (1909) (reconstruction, D. Roegel, 2011)

Table with columns for numbers and their prime factors, organized in rows of 10 numbers each. The table covers the range from 9513 to 99237.

Lehmer's table of factors (1909) (reconstruction, D. Roegel, 2011)

Table with columns for numbers and their prime factors, organized in rows and columns. The table contains numerical data for the range 9 534 000 to 9 555 000.

Lehmer's table of factors (1909) (reconstruction, D. Roegel, 2011)

Table with columns for numbers and their prime factors, organized in rows and columns. The table contains numerical data for the range 9550 to 9999.

Lehmer's table of factors (1909) (reconstruction, D. Roegel, 2011)

Table with columns for numbers and their prime factors. The table is organized into rows, each representing a range of numbers. Each row contains a sequence of numbers and their corresponding prime factors, with some numbers having multiple factors listed.

Lehmer's table of factors (1909) (reconstruction, D. Roegel, 2011)

Table with columns for numbers and their prime factors, organized in rows and columns. The table contains numerical data representing the factorization of integers in the range 9597 to 9618.



Lehmer's table of factors (1909) (reconstruction, D. Roegel, 2011)

Table with columns for numbers and their prime factors, organized in rows of 10 numbers each. The table covers the range from 9618 to 99359.

Lehmer's table of factors (1909) (reconstruction, D. Roegel, 2011)

Table with columns for numbers and their prime factors, organized in rows and columns. The table contains numerical data for the range 9 639 000 to 9 660 000.

Lehmer's table of factors (1909) (reconstruction, D. Roegel, 2011)

Table with 100 rows and 100 columns of numerical data, representing Lehmer's table of factors for numbers 9600 to 9937.

Lehmer's table of factors (1909) (reconstruction, D. Roegel, 2011)

Table with columns for numbers and their prime factors, organized in rows and columns. The table contains numerical data for the range 9 681 000 to 9 702 000.

Lehmer's table of factors (1909) (reconstruction, D. Roegel, 2011)

Table with columns for numbers and their prime factors. The table is organized into rows, each representing a range of numbers. Each row contains a sequence of numbers and their corresponding prime factors, with some numbers having multiple factors listed. The table is a reconstruction of Lehmer's 1909 work on factoring numbers.

Lehmer's table of factors (1909) (reconstruction, D. Roegel, 2011)

Table with columns for numbers and their prime factors, organized in rows and columns. The table contains numerical data representing the factorization of integers in the range 9,723,000 to 9,744,000.

Lehmer's table of factors (1909) (reconstruction, D. Roegel, 2011)

Table with columns for numbers and their prime factors, organized in rows and columns.

Lehmer's table of factors (1909) (reconstruction, D. Roegel, 2011)

Table with columns for numbers and their prime factors, organized in rows and columns. The table contains numerical data for the range 9765 to 9786.



Lehmer's table of factors (1909) (reconstruction, D. Roegel, 2011)

Table with columns for numbers (e.g., 866, 87, 88, 89, 90, 91, 92, 93, 94, 95, 96, 97, 98, 99) and rows of factor data. Each row contains a sequence of numbers representing factors or related values for that specific number.

Lehmer's table of factors (1909) (reconstruction, D. Roegel, 2011)

Table with columns for numbers and their prime factors. The table is organized into rows, each representing a range of numbers. Each row contains a sequence of numbers and their corresponding prime factors, with some numbers having multiple factors listed. The table is a reconstruction of Lehmer's 1909 work on factoring numbers.

Lehmer's table of factors (1909) (reconstruction, D. Roegel, 2011)

Table with columns for numbers and their prime factors. The table is organized into rows, each representing a range of numbers. Each row contains a sequence of numbers and their corresponding prime factors, with some numbers having multiple factors listed.

Lehmer's table of factors (1909) (reconstruction, D. Roegel, 2011)

Table with columns for numbers 98-99 and rows for factors 1-100. Each cell contains a small table of numbers representing factors and their multiplicities.

Lehmer's table of factors (1909) (reconstruction, D. Roegel, 2011)

Table with columns for numbers and their prime factors, organized in rows and columns. The table contains numerical data for the range 9870 to 9999.

Lehmer's table of factors (1909) (reconstruction, D. Roegel, 2011)

Table with columns for numbers and their prime factors, organized in rows and columns. The table contains numerical data for the range 9891 to 9999.

Lehmer's table of factors (1909) (reconstruction, D. Roegel, 2011)

Table with columns for numbers and their prime factors, organized in rows and columns. The table contains numerical data for the range 9 912 000 to 9 933 000.

Lehmer's table of factors (1909) (reconstruction, D. Roegel, 2011)

Table with columns for numbers and their prime factors. The table is organized into rows and columns, with numbers listed in the first column and their prime factors in the subsequent columns. The numbers range from 99,330 to 99,200.



Lehmer's table of factors (1909) (reconstruction, D. Roegel, 2011)

Table with columns for numbers and their prime factors, organized in rows of 10 numbers each. The table covers the range from 9954 to 9975.

Lehmer's table of factors (1909) (reconstruction, D. Roegel, 2011)

Table with 40 columns and 100 rows of numerical data, representing Lehmer's table of factors for numbers 9 975 000 to 9 996 000.

Lehmer's table of factors (1909) (reconstruction, D. Roegel, 2011)

Table with columns for numbers and their prime factors. The table is organized into rows corresponding to the numbers 476 through 999. Each row contains the number followed by its prime factors in ascending order, separated by spaces. For example, row 476: 476 1 11 13 17 19 23 29 31 37 41 43 47 53 59 61 67 71 73 79 83 89 97 101 103 107 109 113 121 127 131 137 139 143 149 151 157 163 167 169 173 179 181 187 191 193 197 199 200. The table continues in this pattern for all numbers in the range.

Lehmer's table of factors (1909) (reconstruction, D. Roegel, 2011)

Table with columns for numbers and their prime factors, organized in rows and columns. The table contains numerical data for the range 10,017,000 to 10,038,000.