



HAL
open science

A Comparison of Chief Complaints and Emergency Department Reports for Identifying Patients with Acute Lower Respiratory Syndrome

Wendy Chapman, John Dowling, Gregory F Cooper, Milos Hauskrecht,
Michal Valko

► **To cite this version:**

Wendy Chapman, John Dowling, Gregory F Cooper, Milos Hauskrecht, Michal Valko. A Comparison of Chief Complaints and Emergency Department Reports for Identifying Patients with Acute Lower Respiratory Syndrome. International Society for Disease Surveillance, Oct 2006, Baltimore, United States. hal-00643495

HAL Id: hal-00643495

<https://inria.hal.science/hal-00643495v1>

Submitted on 22 Nov 2011

HAL is a multi-disciplinary open access archive for the deposit and dissemination of scientific research documents, whether they are published or not. The documents may come from teaching and research institutions in France or abroad, or from public or private research centers.

L'archive ouverte pluridisciplinaire **HAL**, est destinée au dépôt et à la diffusion de documents scientifiques de niveau recherche, publiés ou non, émanant des établissements d'enseignement et de recherche français ou étrangers, des laboratoires publics ou privés.

A Comparison of Chief Complaints and Emergency Department Reports for Identifying Patients with Acute Lower Respiratory Syndrome

Wendy W. Chapman, PhD¹, John N. Dowling, MD, MS¹, Gregory F. Cooper, MD, PhD¹, Milos Hauskrecht, PhD², Michal Valko, MSc²

University of Pittsburgh Departments of Biomedical Informatics¹ and Computer Science²

INTRODUCTION

Automated syndromic surveillance systems often classify patients into syndromic categories based on free-text chief complaints. Chief complaints (CC) demonstrate low to moderate sensitivity in identifying syndromic cases. Emergency Department (ED) reports promise more detailed clinical information that may increase sensitivity of detection.

OBJECTIVE

Compare classification of patients based on chief complaints against classification from clinical data described in ED reports for identifying patients with an acute lower respiratory syndrome.

METHODS

As shown in Figure 1, 272 patients were automatically classified based on chief complaints and on 55 clinical features related to lower respiratory illness (e.g., cough, shortness of breath, pneumonia on x-ray, oxygen desaturation, CHF, etc.). We compared Chief Complaint Classification by classifiers CoCo and MPLUS against ED Classification using a Random Forests Classifier. Gold Standard Classification comprised majority vote of three physicians reading ED reports. We also compared individual physician classifications against Gold Standard Classification for physicians reading (a) chief complaints, (b) full-text ED reports, and (c) 55 manually abstracted clinical features. We calculated sensitivity and specificity for human and automated classifiers by randomly splitting the 272 cases into 70% train and 30% test sets and averaging performance over 40 splits.

RESULTS

Figure 2 plots the true positive rate (TPR) and false positive rate (FPR) of human and automated classifications. ED Classification with the Random Forest Classifier (curve) performed similarly to three individual physicians reading ED reports (upper three black diamonds) and three physicians reading 55 abstracted clinical features (lower three black diamonds). ED Classification dominated CC Classification by a physician (□), CoCo (△), and MPLUS (○).

CONCLUSIONS

ED Classification showed higher sensitivity and specificity than CC Classification when classifying patients based on acute lower respiratory syndrome. The Random Forest Classifier performed similarly to

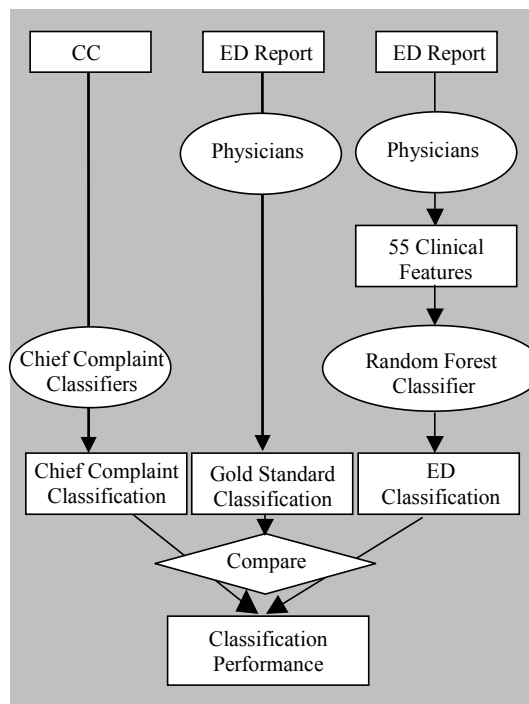


Figure 1. Experiment for comparing classification from chief complaints against classification from ED reports for 272 patients

physicians but used manually abstracted clinical features. Future work will involve automatically abstracting the 55 features from ED reports using natural language processing.

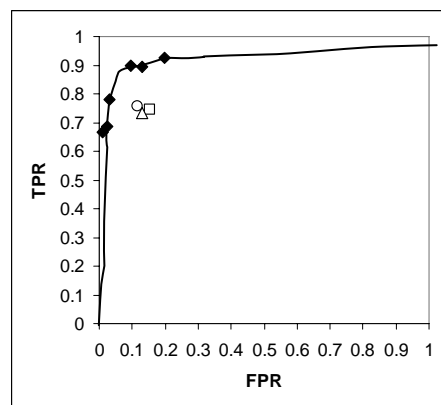


Figure 2. ROC curve for ED Classification using Random Forests. The curve intersects the majority of physician classifications based on the ED report (black diamonds) and dominates classification from CC's (white shapes).