



**HAL**  
open science

# Local time stepping and discontinuous Galerkin methods for symmetric first order hyperbolic systems

Abdelaâziz Ezziani, Patrick Joly

## ► To cite this version:

Abdelaâziz Ezziani, Patrick Joly. Local time stepping and discontinuous Galerkin methods for symmetric first order hyperbolic systems. *Journal of Computational and Applied Mathematics*, 2008. inria-00339912

**HAL Id: inria-00339912**

**<https://inria.hal.science/inria-00339912>**

Submitted on 19 Nov 2008

**HAL** is a multi-disciplinary open access archive for the deposit and dissemination of scientific research documents, whether they are published or not. The documents may come from teaching and research institutions in France or abroad, or from public or private research centers.

L'archive ouverte pluridisciplinaire **HAL**, est destinée au dépôt et à la diffusion de documents scientifiques de niveau recherche, publiés ou non, émanant des établissements d'enseignement et de recherche français ou étrangers, des laboratoires publics ou privés.

# Local time stepping and discontinuous Galerkin methods for symmetric first order hyperbolic systems

Abdelaâziz Ezziani <sup>a,b</sup> Patrick Joly <sup>c</sup>

<sup>a</sup>*Laboratoire de mathématiques appliquées, CNRS UMR 5142, Université de Pau, IPRA-Avenue de l'université, B.P. 1155, 64013 Pau Cedex, France*

<sup>b</sup>*Team-Project Magique3D, INRIA Bordeaux-Sud Ouest  
Email: Abdelaaziz.Ezziani@univ-pau.fr*

<sup>c</sup>*Team-Project Poems, UMR 2706 CNRS-INRIA-ENSTA, INRIA Paris-Rocquencourt, B.P 105, 78153 Le Chesnay Cedex, France  
Email: Patrick.Joly@inria.fr*

---

## Abstract

We present a new non conforming space-time mesh refinement method for symmetric first order hyperbolic system. This method is based on the one hand on the use of a conservative higher order discontinuous Galerkin approximation for space discretization and a finite difference scheme in time, on the other hand on appropriate discrete transmission conditions between the grids. We use a discrete energy technique to drive the construction of the matching procedure between the grids and guarantee the stability of the method.

*Key words:* Local time stepping, discontinuous Galerkin, first-order hyperbolic problem, energy conservation, finite difference scheme, explicit scheme.

*1991 MSC:* 35L05, 58J45, 65N30

---

## 1 Introduction

This work has been motivated by the construction of a non conforming space-time mesh refinement method for wave propagation in aeroacoustics, in the spirit of the previous work for the wave equation [3,4], Maxwell's equations [5] or elastodynamics [1,6], when finite elements are used for the space discretization of the equations. The novelty of this work lies on the fact that a discontinuous Galerkin (DG) approximation is used for space discretization. This is specifically interesting for aeroacoustic applications. Since, to our knowledge, there is no existing finite element method for the linearized Euler equations.

The inherent flexibility of this type of method allows us, “naturally”, to deal with non matching grids in space. However, when time discretization (using finite differences) is concerned, the use of a local time step, which is for instance highly desirable in case of refined space meshes, remains a difficult question: particularly, the stability of the resulting numerical method is a delicate issue. Let us mention that the question of local time stepping with DG methods has been considered in the particular case of Maxwell’s equations in [12] (where the stability question is not completely clarified) or in [8] for elastic waves. More recently, in [7], a method is proposed for the second order equation where the objective (energy conservation) is close to ours but the method consists more in working on the time discretization, typically in the fine grid. In this paper, we develop a rather general method which is applicable to zero order perturbations of symmetric hyperbolic systems in the sense of Friedrichs (Linearized Euler equations or Maxwell’s equations are of this type). The key point is the derivation of appropriate discrete transmission conditions between two space-time grids. We use a discrete energy technique to construct such conditions, and guarantee the stability of the matching procedure under the same CFL condition that should be used if the two grids were considered separately. The object of this paper is to present the construction of the method and to emphasize the stability analysis. Some numerical tests in 2D are presented in the last section.

## 2 First order symmetric hyperbolic systems

Let  $\Omega$  be a domain in  $\mathbb{R}^d$ ,  $d = 1, 2, 3$ , we consider a zero order perturbation of symmetric hyperbolic system in the sense of Friedrichs [9] :

$$\left\{ \begin{array}{l} \text{find } \mathbf{u} : \Omega \times \mathbb{R}^+ \mapsto \mathbb{R}^m \text{ such that:} \\ M \partial_t \mathbf{u} + \sum_{j=1}^d A_j \partial_{x_j} \mathbf{u} + C \mathbf{u} = \mathbf{f}, \quad \text{in } \Omega \times \mathbb{R}^+ \setminus \{0\}, \\ \mathbf{u}(x, 0) = \mathbf{u}_0(x), \quad \text{in } \Omega, \end{array} \right. \quad (1)$$

where  $M$ ,  $A_j$ ,  $j = 1, \dots, d$  and  $C$  are square matrices of dimension  $m \times m$ , uniformly bounded functions of  $x \in \Omega$ . We assume that  $M$  is symmetric positive definite (uniformly in  $x$ ) and that each  $A_j$ ,  $j = 1, \dots, d$  is symmetric. We complete the system (1) by the boundary condition on  $\Gamma = \partial\Omega$  ( $\mathbf{n} = (n_1, \dots, n_d)^t$  being the unit outward normal to  $\Gamma$ ):

$$(A(\mathbf{n}) - N)\mathbf{u} = 0 \quad \text{on } \Gamma \times \mathbb{R}^+ \setminus \{0\}, \quad A(\mathbf{n}) = \sum_{j=1}^d n_j A_j, \quad (2)$$

where, for each  $x \in \Gamma$ ,  $N = N(x)$  is a  $m \times m$  matrix satisfying

$$N + N^t \geq 0, \quad \ker(A(\mathbf{n}) - N) + \ker(A(\mathbf{n}) + N) = \mathbb{R}^m. \quad (3)$$

The well-posedness of the initial boundary value problem (1, 2), under conditions (3), is well known since the work of Friedrichs [9], when the  $A_j$ 's satisfy:

$$\mathbf{div} A = \sum_{j=1}^d \partial_{x_j} A_j \in L^\infty(\mathbb{R}^d; \mathbb{R}^{m \times m}) \quad (4)$$

Let us emphasize here the related energy identity and energy estimates. Denoting by  $(\cdot, \cdot)$  (respectively  $\langle \cdot, \cdot \rangle$ ) the inner product in  $L^2(\Omega)^m$  (respectively  $L^2(\Gamma)^m$ ), we define the energy of  $\mathbf{u}$  at time  $t$  by:

$$E(t) = (M \mathbf{u}(t), \mathbf{u}(t)).$$

One easily sees that this quantity satisfies

$$\frac{1}{2} \frac{dE}{dt} = (\mathbf{f}, \mathbf{u}) - \left( \left( C - \frac{1}{2} \mathbf{div} A \right) \mathbf{u}, \mathbf{u} \right) - \left\langle \frac{N + N^t}{4} \mathbf{u}, \mathbf{u} \right\rangle. \quad (5)$$

Indeed, multiplying the equation in (1) by  $\mathbf{u}$ , we get after integration on  $\Omega$ :

$$\frac{1}{2} \frac{d}{dt} \int_{\Omega} M \mathbf{u} \cdot \mathbf{u} \, dx + \sum_{j=1}^d \int_{\Omega} (A_j \partial_{x_j} \mathbf{u}) \cdot \mathbf{u} \, dx + \int_{\Omega} C \mathbf{u} \cdot \mathbf{u} \, dx = \int_{\Omega} \mathbf{f} \cdot \mathbf{u} \, dx. \quad (6)$$

We integrate by parts the second term. By symmetry of the  $A_j$ 's, we get:

$$\sum_{j=1}^d \int_{\Omega} (A_j \partial_{x_j} \mathbf{u}) \cdot \mathbf{u} \, dx = - \sum_{j=1}^d \int_{\Omega} (A_j \partial_{x_j} \mathbf{u}) \cdot \mathbf{u} \, dx - \int_{\Omega} \mathbf{div} A \mathbf{u} \cdot \mathbf{u} \, dx + \int_{\Gamma} A(\mathbf{n}) \mathbf{u} \cdot \mathbf{u} \, d\sigma,$$

which gives us

$$\left| \begin{aligned} \sum_{j=1}^d \int_{\Omega} (A_j \partial_{x_j} \mathbf{u}) \cdot \mathbf{u} \, dx &= \frac{1}{2} \left[ - \int_{\Omega} \mathbf{div} A \mathbf{u} \cdot \mathbf{u} \, dx + \int_{\Gamma} A(\mathbf{n}) \mathbf{u} \cdot \mathbf{u} \, d\sigma \right], \\ &= \frac{1}{2} \left[ - \int_{\Omega} \mathbf{div} A \mathbf{u} \cdot \mathbf{u} \, dx + \frac{1}{2} \int_{\Gamma} (N + N^t) \mathbf{u} \cdot \mathbf{u} \, d\sigma \right]. \end{aligned} \right. \quad (7)$$

where we have used the boundary condition (2). Finally, substituting (7) into (6) leads to (5). The reader will notice that:

- Using Gronwall's lemma, it is easy to get  $L^2$  estimates of the solution. This is where the positivity property of  $N$  plays a major role. When  $\mathbf{f}$  belongs to  $C^0(L^2)$ , one obtains an upper bound in  $\exp \alpha t$  where  $\alpha$  is related to  $\|\mathbf{div} A\|_\infty$  and  $\|C\|_\infty$  and the lower bound for the eigenvalues of  $M$ .
- When the symmetric part of  $2C - \mathbf{div} A$  is positive, one sees that the energy  $E(t)$  is a decreasing function of time as soon as  $\mathbf{f} = 0$ : the system is dissipative and one gets uniform (in time)  $L^2$  estimates of the solution.

**Remark 1** *An important application is sound propagation in a homogeneous fluid in stationary flow (aeroacoustics). The unknown is  $\mathbf{u} = (\mathbf{v}, p)^t$  where  $\mathbf{v}$  is the velocity field and  $p$  the pressure, governed by the compressible Euler equations (after appropriate scaling) :*

$$\begin{cases} \partial_t \mathbf{v} + (\mathbf{M} \cdot \nabla) \mathbf{v} + (\mathbf{v} \cdot \nabla) \mathbf{M} + \nabla p = 0, \\ \partial_t p + (\mathbf{M} \cdot \nabla) p + \nabla \cdot \mathbf{v} = 0, \end{cases} \quad (8)$$

where  $\mathbf{M}(x)$  is the given Mach vector distribution for the reference flow. The reader will easily check that (8) is a particular case of (1) and that the condition (4) amounts to saying that  $\mathbf{M}(x)$  is Lipschitz-continuous. Finally the slipping condition  $\mathbf{v} \cdot \mathbf{n} = 0$  is of type (2) and satisfies (3).

### 3 Conservative discontinuous Galerkin method

The method developed here is applicable to the general problem (1, 2)(see section 5) but, for the sake of clarity, we first consider the case where  $\Omega = \mathbb{R}^d$  (no boundary), the matrices  $A_j$ ,  $j = 1, \dots, d$  are constant,  $C = 0$  and  $\mathbf{f} = 0$ . Note that this is a case where the energy is conserved.

*A conservative variational formulation.* A particularity of DG methods (see [2,10]) is that a mesh of the domain is introduced before the space discretization. Thus we consider a (family of) mesh(es)  $\mathcal{T}_h$ ,  $h > 0$ , of  $\Omega = \mathbb{R}^d$

$$\mathcal{T}_h = \{K \in \mathcal{T}_h\}, \quad \bar{\Omega} = \cup_{K \in \mathcal{T}_h} K,$$

whose stepsize  $h = \sup \text{diam } K$  is devoted to tend to 0. Here, we do not make particular assumptions on the shape of the “elements”  $K$ . However, in practice, these will be triangles or quadrilaterals in 2D, tetrahedra or hexahedra in 3D. The point to emphasize is that to the conformity is not required (i. e. hanging nodes are allowed). We assume in the sequel that the solution  $\mathbf{u}(t)$  of (1, 2) satisfies

$$\forall h, \quad \mathbf{u}(t) \in C^0(\mathbb{R}^+; \mathbb{V}^h), \quad (9)$$

where we have introduced the space:

$$\mathbb{V}^h = \{\mathbf{v} \in L^2(\Omega)^m / \forall K \in \mathcal{T}_h, \mathbf{v}_K := \mathbf{v}|_K \in H^1(K)^m\} \quad (10)$$

Denote  $\mathbf{n}_K$  the unit outward normal to  $\partial K$  and introducing the interfaces  $\Sigma_{KL} = \partial K \cap \partial L$  (possibly empty) for all  $(K, L) \in \mathcal{T}_h^2$ , we notice that (1) is equivalent to finding  $\mathbf{u}(t) : \mathbb{R}^+ \mapsto \mathbb{V}^h$  such that:

$$M \partial_t \mathbf{u}_K + \sum_{j=1}^d A_j \partial_{x_j} \mathbf{u}_K = 0, \quad \text{in } K, \quad \forall K \in \mathcal{T}_h, \quad (11a)$$

$$A(\mathbf{n}_k) \mathbf{u}_k + A(\mathbf{n}_L) \mathbf{u}_L = 0, \quad \text{on } \Sigma_{KL}, \quad \forall (K, L) \in \mathcal{T}_h^2, \quad (11b)$$

To obtain a variational formulation, we multiply (11a) by some  $\mathbf{v}_K \in [H^1(K)]^m$  and then integrate on  $K$  to obtain:

$$\frac{d}{dt} \int_K M \mathbf{u}_K \cdot \mathbf{v}_K dx + \sum_{j=1}^d \int_K A_j \partial_{x_j} \mathbf{u}_K \cdot \mathbf{v}_K dx = 0.$$

After an integration by parts, we have:

$$\left| \begin{aligned} \frac{d}{dt} \int_K M \mathbf{u}_K \cdot \mathbf{v}_K dx - \sum_{j=1}^d \int_K A_j \mathbf{u}_K \cdot \partial_{x_j} \mathbf{v}_K dx \\ + \sum_L \int_{\Sigma_{KL}} A(\mathbf{n}_K) \mathbf{u}_K \cdot \mathbf{v}_K d\sigma = 0. \end{aligned} \right. \quad (12)$$

The general principle of DG methods is to replace on  $\Sigma_{KL}$ , the quantity  $A(\mathbf{n}_K) \mathbf{u}_K$  by some numerical flux  $\mathcal{F}(\mathbf{u}_K, \mathbf{u}_L)$  on  $\Sigma_{KL}$ , in order to take into account the transmission conditions (11b). There are various possible choices for the fluxes  $\mathcal{F}$  (this is where DG approximations may differ). As in [12], we consider here the centered fluxes, which will lead to an energy preserving method. Using (11b) and  $\mathbf{n}_L = -\mathbf{n}_K$  on  $\Sigma_{KL}$ , we have, on  $\Sigma_{KL}$ :

$$A(\mathbf{n}_K) \mathbf{u}_K = \frac{1}{2} [A(\mathbf{n}_K) \mathbf{u}_K - A(\mathbf{n}_L) \mathbf{u}_L] \quad \left( \equiv A(\mathbf{n}_K) \frac{\mathbf{u}_K + \mathbf{u}_L}{2} \right) \quad (13)$$

We choose  $\mathcal{F}(\mathbf{u}_K, \mathbf{u}_L)$  as the right hand side of (13) to obtain:

$$\left| \begin{aligned} \frac{d}{dt} \int_K M \mathbf{u}_K \cdot \mathbf{v}_K dx - \sum_{j=1}^d \int_K A_j \mathbf{u}_K \cdot \partial_{x_j} \mathbf{v}_K dx \\ + \frac{1}{2} \sum_L \int_{\Sigma_{KL}} [A(\mathbf{n}_K) \mathbf{u}_K - A(\mathbf{n}_L) \mathbf{u}_L] \cdot \mathbf{v}_K d\sigma = 0. \end{aligned} \right.$$

After summation over  $K$ , we see that  $\mathbf{u} \equiv \mathbf{u}^h$  is the solution of the problem

$$\left\{ \begin{aligned} &\text{find } \mathbf{u}^h(t) : \mathbb{R}^+ \mapsto \mathbb{V}^h \text{ such that :} \\ &\frac{d}{dt} m(\mathbf{u}^h, \mathbf{v}_h) + a_h(\mathbf{u}^h, \mathbf{v}_h) = 0, \quad \forall \mathbf{v}_h \in \mathbb{V}^h, \end{aligned} \right. \quad (14)$$

where we have defined the bilinear forms in  $\mathbb{V}_h$ :

$$\left\{ \begin{aligned} m(\mathbf{u}_h, \mathbf{v}_h) &= \int_{\Omega} M(x) \mathbf{u}_h \cdot \mathbf{v}_h dx \quad \left( \equiv \sum_K \int_K M(x) \mathbf{u}_K \cdot \mathbf{v}_K dx \right), \\ a_h(\mathbf{u}_h, \mathbf{v}_h) &= \frac{1}{2} \sum_{K,L} \int_{\Sigma_{KL}} [A(\mathbf{n}_K) \mathbf{u}_K - A(\mathbf{n}_L) \mathbf{u}_L] \cdot \mathbf{v}_K d\sigma \\ &\quad - \sum_{j,K} \int_K A_j \mathbf{u}_K \cdot \partial_{x_j} \mathbf{v}_K dx. \end{aligned} \right. \quad (15)$$

The fundamental property of  $a_h(\cdot, \cdot)$  is given by the following theorem:

**Theorem 1** For all  $(\mathbf{u}_h, \mathbf{v}_h) \in \mathbb{V}_h^2$ ,  $a_h(\mathbf{u}_h, \mathbf{v}_h) = -a_h(\mathbf{v}_h, \mathbf{u}_h)$ .

**Proof.** We integrate by parts the second term in  $a_h(\mathbf{u}_h, \mathbf{v}_h)$  (cf. 15) to get:

$$\left| \begin{aligned} a_h(\mathbf{u}_h, \mathbf{v}_h) &= -\frac{1}{2} \sum_{K,L} \int_{\Sigma_{KL}} [A(\mathbf{n}_K) \mathbf{u}_K + A(\mathbf{n}_L) \mathbf{u}_L] \cdot \mathbf{v}_K d\sigma \\ &\quad + \sum_{j,K} \int_K A_j \mathbf{u}_K \cdot \partial_{x_j} \mathbf{v}_K dx \end{aligned} \right.$$

Taking half of the sum of the two expressions we got for  $a_h(\mathbf{u}_h, \mathbf{v}_h)$ , we obtain

$$a_h(\mathbf{u}_h, \mathbf{v}_h) = \frac{1}{2} \sum_{j,K} \int_K [A_j \partial_{x_j} \mathbf{u}_K \cdot \mathbf{v}_K - A_j \mathbf{u}_K \cdot \partial_{x_j} \mathbf{v}_K] dx - \frac{1}{2} \gamma_h(\mathbf{u}_h, \mathbf{v}_h)$$

$$\text{where } \gamma_h(\mathbf{u}_h, \mathbf{v}_h) = \sum_{K,L} \int_{\Sigma_{KL}} A(\mathbf{n}_L) \mathbf{u}_L \cdot \mathbf{v}_K d\sigma.$$

To conclude, it remains to check that  $\gamma_h(\cdot, \cdot)$  is skew-symmetric. Interchanging the roles of  $K$  and  $L$  in the summation, we have, since  $\Sigma_{KL} = \Sigma_{LK}$ ,

$$\gamma_h(\mathbf{u}_h, \mathbf{v}_h) = \sum_{K,L} \int_{\Sigma_{KL}} A(\mathbf{n}_K) \mathbf{u}_K \cdot \mathbf{v}_L d\sigma.$$

Using first  $A(\mathbf{n}_K) = -A(\mathbf{n}_L)$  on  $\Sigma_{KL}$ , next the symmetry of  $A(\mathbf{n}_L)$ , we get

$$\gamma_h(\mathbf{u}_h, \mathbf{v}_h) = -\sum_{K,L} \int_{\Sigma_{KL}} A(\mathbf{n}_L) \mathbf{u}_K \cdot \mathbf{v}_L d\sigma = -\sum_{K,L} \int_{\Sigma_{KL}} A(\mathbf{n}_L) \mathbf{v}_L \cdot \mathbf{u}_K d\sigma,$$

that is to say  $\gamma_h(\mathbf{u}_h, \mathbf{v}_h) = -\gamma_h(\mathbf{v}_h, \mathbf{u}_h)$ .  $\square$

**Remark 2** Writing  $\gamma_h(\mathbf{u}_h, \mathbf{v}_h) = (\gamma_h(\mathbf{u}_h, \mathbf{v}_h) - \gamma_h(\mathbf{v}_h, \mathbf{u}_h))/2$ , we get another expression of  $a_h(\mathbf{u}_h, \mathbf{v}_h)$  which we shall use in the sequel, namely:

$$\left| \begin{aligned} a_h(\mathbf{u}_h, \mathbf{v}_h) &= \frac{1}{2} \sum_K \sum_{j=1}^d \int_K [A_j \partial_{x_j} \mathbf{u}_K \cdot \mathbf{v}_K - A_j \mathbf{u}_K \cdot \partial_{x_j} \mathbf{v}_K] dx \\ &\quad + \frac{1}{4} \sum_{K,L} \int_{\Sigma_{KL}} [A(\mathbf{n}_K) \mathbf{u}_L \cdot \mathbf{v}_K - A(\mathbf{n}_K) \mathbf{v}_L \cdot \mathbf{u}_K] d\sigma. \end{aligned} \right. \quad (16)$$

*Space discretization.* To each  $K \in \mathcal{T}_h$ , we associate a finite-dimensional subspace  $\mathbb{V}_K$  of  $[H^1(K)]^m$ , (typically  $\mathbb{V}_K = [P_r(K)]^m$ , where  $P_r(K)$  the set polynomials of degree  $\leq r$ ) and define “discrete” subspace of  $\mathbb{V}^h$

$$\mathbb{V}_h = \{\mathbf{v} \in L^2(\Omega)^m / \forall K \in \mathcal{T}_h, \mathbf{v}_K := \mathbf{v}|_K \in \mathbb{V}_K\} \quad (17)$$

The semi discrete problem consists in finding  $\mathbf{u}_h(t) : \mathbb{R}^+ \mapsto \mathbb{V}_h$  such that

$$\frac{d}{dt}m(\mathbf{u}_h, \mathbf{v}_h) + a_h(\mathbf{u}_h, \mathbf{v}_h) = 0, \quad \forall \mathbf{v}_h \in \mathbb{V}_h, \quad (18)$$

From theorem 1, we deduce that the energy of the semi-discrete solution  $\mathbf{u}_h$ , namely  $E_h(t) = m(\mathbf{u}_h, \mathbf{u}_h)$ , is conserved in time.

*Time discretization and stability analysis.* We construct a fully explicit (at most local mass matrices have to be inverted, element by element) leap-frog scheme. We choose to compute the discrete solutions at times  $t^{n+1/2} = (n + 1/2)\Delta t$ . This is a priori a strange choice but we make it for convenience. It will allow us to simplify the notation for the presentation of the local time stepping procedure: find  $\mathbf{u}_h^{n+1/2} \in \mathbb{V}_h$ ,  $n \in \mathbb{N}$  such that

$$m\left(\frac{\mathbf{u}_h^{n+3/2} - \mathbf{u}_h^{n-1/2}}{2\Delta t}, \mathbf{v}_h\right) + a_h(\mathbf{u}_h^{n+1/2}, \mathbf{v}_h) = 0, \quad \forall \mathbf{v}_h \in \mathbb{V}_h \quad n \geq i. \quad (19)$$

Choosing  $\mathbf{v}_h = \mathbf{u}_h^{n+3/2} + \mathbf{u}_h^{n-1/2}$  in (19), and using again theorem 1, one deduces the conservation in time of the discrete energy

$$E_h^n = \frac{1}{2} \left[ \|\mathbf{u}_h^{n+1/2}\|^2 + \|\mathbf{u}_h^{n-1/2}\|^2 \right] + \Delta t a_h(\mathbf{u}_h^{n+1/2}, \mathbf{u}_h^{n-1/2}), \quad (20)$$

where  $\|\mathbf{v}\|^2 = m(\mathbf{v}, \mathbf{v})$ ,  $\forall \mathbf{v} \in \mathbb{L}^2(\Omega)^m$ . To get a sufficient  $L^2$  stability condition, it suffices to show the positivity of the energy (20), which leads to

$$\Delta t \|a_h\| \leq 1 \quad \text{where} \quad \|a_h\| = \sup_{\mathbf{u}_h, \mathbf{v}_h \in \mathbb{V}_h \setminus \{0\}} \frac{a_h(\mathbf{u}_h, \mathbf{v}_h)}{\|\mathbf{u}_h\| \|\mathbf{v}_h\|}. \quad (21)$$

**Remark 3** (21) is an abstract CFL condition. In practice, since one deals with a first order differential operator one has  $\|a_h\| = O(h^{-1})$  and (21) means that the ratio  $\Delta t/h$  must remain bounded.

#### 4 A conservative local time stepping procedure

We suppose that  $\Omega$  is a union of two domains  $\Omega_c$  and  $\Omega_f$  separated by an interface  $\Sigma = \bar{\Omega}_c \cap \bar{\Omega}_f$ . We suppose that, for some reason (see [5,1] for some motivating examples), the mesh  $\mathcal{T}_h$  is the union of a (typically coarse) mesh  $\mathcal{T}_h^c$  for the domain  $\Omega_c$  and a (typically fine) mesh  $\mathcal{T}_h^f$  for the domain  $\Omega_f$ . Our goal is to use in each grid a different time step,  $\Delta t_f$  in  $\Omega_f$  and  $\Delta t_c > \Delta t_f$  in  $\Omega_c$ . The motivation for doing this can be dictated by various reasons [5,1]: for instance, according to the hyperbolic nature of the problem, it is natural to choose  $\Delta t$  proportional to the local mesh size, which is in agreement with the CFL condition (see remark 3).

The method that we propose in this paper is valid when the ratio between the



two time steps is a rational number. However, for the sake of simplicity, we explain its construction in the case where this ratio is 2:

$$\Delta t_c = \Delta t, \quad \Delta t_f = \Delta t/2. \quad (22)$$

We begin by rewriting the semi-discrete formulation associated to the mesh  $\mathcal{T}_h = \mathcal{T}_h^c \cup \mathcal{T}_h^f$  by a  $2 \times 2$  system whose unknowns are the respective solutions of the semi-discrete solution  $\mathbf{u}_h$  on  $\Omega_c$  and  $\Omega_f$ . For this, we need the additional notation:

$$\begin{aligned} \mathcal{I}_\ell &= \{(K, L) / \Sigma_{KL} \neq \emptyset, \Sigma_{KL} \subset \Omega_\ell\}, \quad \forall \ell \in \{c, f\}, \\ \mathcal{I} &= \{(K, L) / \Sigma_{KL} \neq \emptyset, \Sigma_{KL} \subset \Sigma\}. \end{aligned}$$

Moreover, we define:

$$\mathbb{V}_h^\ell = \{(\mathbf{v}_h)|_{\Omega_\ell}, \mathbf{v}_h \in \mathbb{V}_h\} \equiv \{\mathbf{v}_{\ell,h} \in L^2(\Omega_\ell) / \forall K \in \mathcal{T}_h^\ell, (\mathbf{v}_{\ell,h})|_K \in \mathbb{V}_K\}. \quad (23)$$

Denoting  $\mathbf{u}_{\ell,h} = \mathbf{u}_h|_{\Omega_\ell}$  and using (16), it is easy to see that we can rewrite the variational formulation (14) as find  $\mathbf{u}_{\ell,h}(t) : \mathbb{R}^+ \mapsto \mathbb{V}_h^\ell$  such that :

$$\begin{cases} \frac{d}{dt} m^c(\mathbf{u}_{c,h}, \mathbf{v}_{c,h}) + a_h^c(\mathbf{u}_{c,h}, \mathbf{v}_{c,h}) + b_h(\mathbf{u}_{f,h}, \mathbf{v}_{c,h}) = 0, & \forall \mathbf{v}_{c,h} \in \mathbb{V}_h^c, \\ \frac{d}{dt} m^f(\mathbf{u}_{f,h}, \mathbf{v}_{f,h}) + a_h^f(\mathbf{u}_{f,h}, \mathbf{v}_{f,h}) - b_h(\mathbf{v}_{f,h}, \mathbf{u}_{c,h}) = 0, & \forall \mathbf{v}_{f,h} \in \mathbb{V}_h^f, \end{cases} \quad (24)$$

where  $m^\ell$  and  $a_h^\ell$  are the following local bilinear forms on  $\mathbb{V}_h^\ell \times \mathbb{V}_h^\ell$ :

$$\begin{cases} m^\ell(\mathbf{u}_h, \mathbf{v}_h) = \int_{\Omega_\ell} \mathbf{u}_K \cdot \mathbf{v}_K dx \quad \left( \equiv \sum_{K \in \mathcal{T}_h^\ell} \int_K M(x) \mathbf{u}_K \cdot \mathbf{v}_K dx \right), \\ a_h^\ell(\mathbf{u}_h, \mathbf{v}_h) = \frac{1}{2} \sum_{K \in \mathcal{T}_h^\ell} \sum_{j=1}^d \int_K [A_j \partial_{x_j} \mathbf{u}_K \cdot \mathbf{v}_K - A_j \mathbf{u}_K \cdot \partial_{x_j} \mathbf{v}_K] dx \\ \quad + \frac{1}{4} \sum_{(K,L) \in \mathcal{I}_\ell} \int_{\Sigma_{KL}} [A(\mathbf{n}_K) \mathbf{u}_L \cdot \mathbf{v}_K - A(\mathbf{n}_K) \mathbf{v}_L \cdot \mathbf{u}_K] d\sigma, \end{cases} \quad (25)$$

and  $b_h$  is the interface bilinear form on  $\mathbb{V}_h^f \times \mathbb{V}_h^c$ :

$$b_h(\mathbf{u}_{f,h}, \mathbf{u}_{c,h}) = \frac{1}{4} \sum_{(K,L) \in \mathcal{I}} \int_{\Sigma_{KL}} A(\mathbf{n}_k) \mathbf{u}_L^f \cdot \mathbf{u}_K^c d\sigma. \quad (26)$$

For the time discretization, our aim is to determine a numerical scheme which coincides inside each grid with the scheme (19) (up to the change of time step) and guarantees the conservation of an appropriate discrete energy. To be more precise, we need to give:

- (i) the discrete instants at which the solution will be computed in each grid,

(ii) the choice of the discrete energy we wish to conserve.

The choice of (i) and (ii) is not unique. Another choice could result into another scheme. In this paper, we use a ‘‘staggered’’ grid in time and propose to compute the solution in  $\Omega_c$  at times  $t^{n+1/2} = (n + 1/2)\Delta t$  and the solution in  $\Omega_f$  at times  $t^{n+3/4} = (n + 3/4)\Delta t$  and  $t^{n+1/4} = (n + 1/4)\Delta t$ . According to the leap-frog procedure, this leads us to propose the following scheme for the time interval  $]t^{n+1/2}, t^{n+3/2}]$  (with obvious notation):

$$\left\{ \begin{array}{l} m^c \left( \frac{\mathbf{u}_{c,h}^{n+\frac{3}{2}} - \mathbf{u}_{c,h}^{n-\frac{1}{2}}}{2\Delta t}, \mathbf{v}_{c,h} \right) + a_h^c(\mathbf{u}_{c,h}^{n+\frac{1}{2}}, \mathbf{v}_{c,h}) + b_h([\mathbf{u}_{f,h}]^{n+\frac{1}{2}}, \mathbf{v}_{c,h}) = 0, \\ m^f \left( \frac{\mathbf{u}_{f,h}^{n+\frac{5}{4}} - \mathbf{u}_{f,h}^{n+\frac{1}{4}}}{\Delta t}, \mathbf{v}_{f,h} \right) + a_h^f(\mathbf{u}_{f,h}^{n+\frac{3}{4}}, \mathbf{v}_{f,h}) - b_h(\mathbf{v}_{f,h}, [\mathbf{u}_{c,h}]^{n+\frac{3}{4}}) = 0, \\ m^f \left( \frac{\mathbf{u}_{f,h}^{n+\frac{3}{4}} - \mathbf{u}_{f,h}^{n-\frac{1}{4}}}{\Delta t}, \mathbf{v}_{f,h} \right) + a_h^f(\mathbf{u}_{f,h}^{n+\frac{1}{4}}, \mathbf{v}_{f,h}) - b_h(\mathbf{v}_{f,h}, [\mathbf{u}_{c,h}]^{n+\frac{1}{4}}) = 0, \\ \forall (\mathbf{v}_{c,h}, \mathbf{v}_{f,h}) \in \mathbb{V}_h^c \times \mathbb{V}_h^f. \end{array} \right. \quad (27)$$

Here,  $[\mathbf{u}_{f,h}]^{n+1/2}$  (respectively  $[\mathbf{u}_{c,h}]^{n+3/4}$  and  $[\mathbf{u}_{f,h}]^{n+1/4}$ ) is an approximation of  $\mathbf{u}_{f,h}$  (respectively  $\mathbf{u}_{c,h}$ ) at time  $t^{n+1/2}$  (respectively  $t^{n+3/4}$  and  $t^{n+1/4}$ ) to be determined. According to (20), it is natural to define as a discrete energy in  $\Omega_c$  at time  $t^n$ , the quantity (setting  $\|\mathbf{v}_c\|_c^2 = m^c(\mathbf{v}_c, \mathbf{v}_c)$ )

$$E_{c,h}^n = \frac{1}{2} \left[ \|\mathbf{u}_{c,h}^{n+1/2}\|_c^2 + \|\mathbf{u}_{c,h}^{n-1/2}\|_c^2 \right] + \Delta t a_h^c(\mathbf{u}_{c,h}^{n+1/2}, \mathbf{u}_{c,h}^{n-1/2}). \quad (28)$$

Analogously, the discrete energy in  $\Omega_f$  can be defined at all instants  $k\Delta t/2, k \in \mathbb{N}$ , in particular at times  $t^n$  (with  $\|\mathbf{v}_f\|_f^2 = m^f(\mathbf{v}_f, \mathbf{v}_f)$ ):

$$E_{f,h}^n = \frac{1}{2} \left[ \|\mathbf{u}_{f,h}^{n+1/4}\|_f^2 + \|\mathbf{u}_{f,h}^{n-1/4}\|_f^2 \right] + \frac{\Delta t}{2} a_h^f(\mathbf{u}_{f,h}^{n+1/4}, \mathbf{u}_{f,h}^{n-1/4}). \quad (29)$$

Therefore, the total discrete energy can be defined at times  $t^n$  by

$$E_h^n = E_{c,h}^n + E_{f,h}^n \quad (30)$$

To obtain a discrete energy identity, we first choose

$$\mathbf{v}_{c,h} = \mathbf{u}_{c,h}^{n+3/2} + \mathbf{u}_{c,h}^{n-1/2}$$

in the first equation of (27) to compute  $E_{c,h}^{n+1} - E_{c,h}^n$ . Next, we take

$$\mathbf{v}_{f,h} = \mathbf{u}_{f,h}^{n+5/4} + \mathbf{u}_{f,h}^{n+1/4} \quad \text{and} \quad \mathbf{v}_{f,h} = \mathbf{u}_{f,h}^{n+3/4} + \mathbf{u}_{f,h}^{n-1/4}$$

respectively in the second and third equations of (27) and add the two resulting equalities to compute

$$E_{f,h}^{n+1} - E_{f,h}^n.$$

After summation, we get the following energy identity:

$$\left| \begin{aligned} \frac{E_h^{n+1} - E_h^n}{\Delta t} &= b_h \left( [\mathbf{u}_{f,h}]^{n+1/2}, \frac{\mathbf{u}_{c,h}^{n+3/2} + \mathbf{u}_{c,h}^{n-1/2}}{2} \right) \\ -\frac{1}{2} \left[ b_h \left( \frac{\mathbf{u}_{f,h}^{n+5/4} + \mathbf{u}_{f,h}^{n+1/4}}{2}, [\mathbf{u}_{c,h}]^{n+3/4} \right) + b_h \left( \frac{\mathbf{u}_{f,h}^{n+3/4} + \mathbf{u}_{f,h}^{n-1/4}}{2}, [\mathbf{u}_{c,h}]^{n+1/4} \right) \right] \end{aligned} \right|$$

Thus, we have conservation of the energy, i. e.  $E_h^{n+1} = E_h^n$ , as soon as

$$\left\{ \begin{aligned} [\mathbf{u}_{c,h}]^{n+3/4} &= [\mathbf{u}_{c,h}]^{n+1/4} = \frac{\mathbf{u}_{c,h}^{n+3/2} + \mathbf{u}_{c,h}^{n-1/2}}{2}, \\ [\mathbf{u}_{f,h}]^{n+1/2} &= \frac{\mathbf{u}_{f,h}^{n+5/4} + \mathbf{u}_{f,h}^{n+3/4} + \mathbf{u}_{f,h}^{n+1/4} + \mathbf{u}_{f,h}^{n-1/4}}{4}. \end{aligned} \right. \quad (31)$$

The scheme we propose is finally (27, 31). The energy conservation property guarantees of course the  $L^2$  stability of this scheme under the CFL condition

$$\Delta t \max \left( \|a_h^c\|, \frac{\|a_h^f\|}{2} \right) \leq 1. \quad (32)$$

i. e. the same CFL condition as if the computations in the two grids were decoupled. After decomposition of the discrete unknowns on appropriate bases of the spaces  $\mathbb{V}_h^c$  and  $\mathbb{V}_h^f$  (constructed from bases of the local spaces  $\mathbb{V}_K$ ), we end up with the following algebraic problem (with again obvious notation)

$$\left\{ \begin{aligned} M_h^c \frac{\mathbf{U}_c^{n+\frac{3}{2}} - \mathbf{U}_c^{n-\frac{1}{2}}}{2\Delta t} + A_h^c \mathbf{U}_c^{n+\frac{1}{2}} + B_h \frac{\mathbf{U}_f^{n+\frac{5}{4}} + \mathbf{U}_f^{n+\frac{3}{4}} + \mathbf{U}_f^{n+\frac{1}{4}} + \mathbf{U}_f^{n-\frac{1}{4}}}{4} &= 0, \\ M_h^f \frac{\mathbf{U}_f^{n+\frac{5}{4}} - \mathbf{U}_f^{n+\frac{1}{4}}}{\Delta t} + A_h^f \mathbf{U}_f^{n+\frac{3}{4}} - B_h \frac{\mathbf{U}_c^{n+\frac{3}{2}} + \mathbf{U}_c^{n-\frac{1}{2}}}{2} &= 0, \\ M_h^f \frac{\mathbf{U}_f^{n+\frac{3}{4}} - \mathbf{U}_f^{n-\frac{1}{4}}}{\Delta t} + A_h^f \mathbf{U}_f^{n+\frac{1}{4}} - B_h \frac{\mathbf{U}_c^{n+\frac{3}{2}} + \mathbf{U}_c^{n-\frac{1}{2}}}{2} &= 0, \end{aligned} \right. \quad (33)$$

where  $M_h^c$  and  $M_h^f$  are the local mass matrices,  $A_h^c$  and  $A_h^f$  are the local stiffness matrices, and  $B_h$  is the coupling stiffness matrix (transmission matrix).

This scheme is of order two “inside” each grid, but at the interface, looking at equations (31), we see that, if the second equality is consistent in  $O(\Delta t^2)$ , the first one is only in  $O(\Delta t)$ . By adapting the analysis of [4] and [11], one can see that, in 1D, the  $L^2$ - global accuracy of the method is  $O(\Delta t^{3/2})$  (this is also confirmed by numerical experiments in 2D). Following [13], we propose a post-processing to restore the second order accuracy, considering

$$\tilde{\mathbf{U}}_c^{n+\frac{1}{2}} = \frac{\mathbf{U}_c^{n+\frac{3}{2}} + \mathbf{U}_c^{n-\frac{1}{2}}}{2}, \quad \tilde{\mathbf{U}}_f^k = \frac{\mathbf{U}_f^{k+\frac{5}{4}} + \mathbf{U}_f^{k+\frac{3}{4}} + \mathbf{U}_f^{k+\frac{1}{4}} + \mathbf{U}_f^{k-\frac{1}{4}}}{4}, \quad (34)$$

with  $k$  equal to  $n$  or  $n + 1/2$ . We can write directly the scheme satisfied by  $\tilde{\mathbf{U}}_c^n$  and  $\tilde{\mathbf{U}}_f^n$ , which is of second order (all approximations are centered).

$$\begin{cases} M_h^c \frac{\tilde{\mathbf{U}}_c^{n+3/2} - \tilde{\mathbf{U}}_c^{n-1/2}}{2\Delta t} + A_h^c \tilde{\mathbf{U}}_c^{n+1/2} + B_h \frac{\tilde{\mathbf{U}}_f^{n+3/2} + \tilde{\mathbf{U}}_f^{n-1/2}}{2} = 0, \\ M_h^f \frac{\tilde{\mathbf{U}}_f^{n+3/2} - \tilde{\mathbf{U}}_f^{n+1/2}}{\Delta t} + A_h^f \tilde{\mathbf{U}}_f^{n+1} - B_h^t \frac{\tilde{\mathbf{U}}_c^{n+3/2} + \tilde{\mathbf{U}}_c^{n+1/2}}{2} = 0, \\ M_h^f \frac{\tilde{\mathbf{U}}_f^{n+1} - \tilde{\mathbf{U}}_f^n}{\Delta t} + A_h^f \tilde{\mathbf{U}}_f^{n+1/2} - B_h^t \frac{\tilde{\mathbf{U}}_c^{n+3/2} + 2\tilde{\mathbf{U}}_c^{n+1/2} + \tilde{\mathbf{U}}_c^{n-1/2}}{4} = 0, \end{cases} \quad (35)$$

This scheme is stable under condition (32) since it is equivalent to (33). However, the direct stability analysis of (35) would be far from trivial.

For computing the discrete unknowns in the interval  $]t^{n+1/2}, t^{n+3/2}]$ , one has to invert the (sparse) linear system:

$$\begin{bmatrix} M_h^c & \Delta t B_h & 0 \\ -\frac{\Delta t}{2} B_h^t & M_h^f & \Delta t A_h^f \\ -\frac{\Delta t}{4} B_h^t & 0 & M_h^f \end{bmatrix} \begin{bmatrix} \tilde{\mathbf{U}}_c^{n+3/2} \\ \tilde{\mathbf{U}}_f^{n+3/2} \\ \tilde{\mathbf{U}}_f^{n+1} \end{bmatrix} = F^n \quad (36)$$

with  $F^n$  computed from previous instants. Since the matrix  $B_h$  only “sees” the unknowns attached to elements that touch the interface  $\Sigma$ , the scheme remains essentially explicit for interior unknowns. It is only implicit for the unknowns in the neighborhood of the interface.

**Remark 4** *The invertibility of (36) is a consequence of the stability analysis. It can also be checked after elimination of  $\tilde{\mathbf{U}}_f^{n+3/2}$  and  $\tilde{\mathbf{U}}_f^{n+1}$ , which leads to*

$$\mathcal{M}_h \tilde{\mathbf{U}}_c^{n+3/2} = \mathcal{F}, \quad (37)$$

where the symmetric matrix

$$\mathcal{M}_h = M_h^c + \frac{\Delta t^2}{2} \left[ B_h (M_h^f)^{-1} B_h^t - \frac{\Delta t}{2} B_h (M_h^f)^{-1} A_h^f (M_h^f)^{-1} B_h^t \right]$$

is shown to be positive definite under the condition (32). Solving (37) can be used for the practical implementation. In particular, if, on the interface  $\Sigma$ , the mesh of  $\Omega_f$  is a sub-mesh of the mesh of  $\Omega_c$ , one can show that  $\mathcal{M}_h$  is block diagonal element by element and the scheme is thus completely explicit.

## 5 Extensions of the method.

*Variable coefficients, lower order perturbation and boundary conditions.* The method we have presented in section 4 easily extends to the general problem

(1, 2). In fact, the major modification concerns the semi-discrete problem in space, i. e. we have simply to explain how (14) is modified. The discontinuous Galerkin formulation of (1) can be written

$$\begin{cases} \text{find } \mathbf{u}_h(t) : \mathbb{R}^+ \mapsto \mathbb{V}^h \text{ such that :} \\ \frac{d}{dt} m(\mathbf{u}_h, \mathbf{v}_h) + a_h(\mathbf{u}_h, \mathbf{v}_h) + \tilde{a}(\mathbf{u}_h, \mathbf{v}_h) = 0, \quad \forall \mathbf{v}_h \in \mathbb{V}^h, \end{cases} \quad (38)$$

where the bilinear forms  $m(\cdot, \cdot)$  and  $a_h(\cdot, \cdot)$  are still defined by (15), the only differences being that the matrices  $A_j$  and  $A(n_K)$  (the reader will notice that this matrix remains well defined thanks to the regularity assumption (4)) vary in space and that we consider a mesh of the domain  $\Omega$ . The additional bilinear form  $\tilde{a}(\cdot, \cdot)$  is given by

$$\tilde{a}(\mathbf{u}_h, \mathbf{v}_h) = \int_{\Omega} (C - \frac{1}{2} \mathbf{div} A) \mathbf{u}_h \cdot \mathbf{v}_h \, dx + \int_{\Gamma} N \mathbf{u}_h \cdot \mathbf{v}_h \, d\sigma. \quad (39)$$

and corresponds to a block diagonal matrix (it does not contain any interface term). All what concerns the time discretization remains essentially unchanged except that, in order to preserve the stability condition, the term  $\tilde{a}(\mathbf{u}_h, \mathbf{v}_h)$  should be approximated by the classical Crank-Nicolson procedure. This does not perturb the explicit nature of the scheme thanks to the properties of  $\tilde{a}(\cdot, \cdot)$ .

*A more general time-step ratio.* We keep here the notation of section 4. We assume that the time steps  $\Delta t_c$  and  $\Delta t_f$  have a common multiple  $\Delta t$ :

$$\Delta t_c = \Delta t / q_c, \quad \Delta t_f = \Delta t / q_f, \quad (40)$$

where  $q_c$  and  $q_f > q_c$  are two relative prime integers (in section 4, we considered  $q_c = 1, q_f = 2$ ). The solution in  $\Omega_\ell$  in the interval  $]t^{n+1/2}, t^{n+3/2}]$  is computed at  $q_\ell$  equally distributed instants, distant from  $\Delta t_\ell$ :

$$t^{n+\frac{2k+3}{2q_\ell}} = (n + \frac{2k+3}{2q_\ell}) \Delta t, \quad k = 0, \dots, q_\ell - 1.$$

We present the scheme directly in algebraic form ( $B_h^c = B_h$  and  $B_h^f = -B_h^t$ ):

$$\begin{cases} M_h^\ell \frac{\mathbf{U}_\ell^{n+\frac{2k+3}{2q_\ell}} - \mathbf{U}_\ell^{n+\frac{2k-1}{2q_\ell}}}{2\Delta t_\ell} + A_h^\ell \mathbf{U}_\ell^{n+\frac{2k+1}{2q_\ell}} + B_h^\ell [\mathbf{U}_m]^{n+\frac{2k+1}{2q_\ell}} = 0, \\ \ell \in \{c, f\}, \quad m \in \{c, f\} \setminus \{\ell\}, \quad k = 0, \dots, q_\ell - 1. \end{cases} \quad (41)$$

$$\text{with} \quad [\mathbf{U}_m]^{n+\frac{2k+1}{2q_\ell}} = \sum_{j=0}^{q_m-1} \frac{\mathbf{U}_m^{n+\frac{2j+3}{2q_m}} + \mathbf{U}_m^{n+\frac{2j-1}{2q_m}}}{2q_m}, \quad (42)$$

a choice which is shown to imply the conservation of the discrete energy:

$$E_h^n = E_{c,h}^n + E_{f,h}^n, \quad (43)$$

$$E_{\ell,h}^n = \frac{1}{2} \left[ \|\mathbf{u}_{\ell,h}^{n+\frac{1}{2q_\ell}}\|_\ell^2 + \|\mathbf{u}_{\ell,h}^{n-\frac{1}{2q_\ell}}\|_\ell^2 \right] + \Delta t_\ell a_h^\ell(\mathbf{u}_{\ell,h}^{n+\frac{1}{2q_\ell}}, \mathbf{u}_{\ell,h}^{n-\frac{1}{2q_\ell}}). \quad (44)$$

which implies the  $L^2$  stability of (41, 42) under the condition

$$\Delta t \max\left(\frac{\|a_h^c\|}{q_c}, \frac{\|a_h^f\|}{q_f}\right) \leq 1. \quad (45)$$

As in simple case, a post-processing of (41) is necessary to have a scheme of order two everywhere, considering for all  $k = 0, \dots, q_\ell - 1$

$$\tilde{\mathbf{U}}_\ell^{n+\frac{1}{2}+\frac{k}{q_\ell}} = \sum_{j=0}^{q_\ell-1} \frac{\mathbf{U}_\ell^{n+\frac{2k+2j+3}{2q_\ell}} + \mathbf{U}_\ell^{n+\frac{2k+2j-1}{2q_\ell}}}{2q_\ell}, \quad \ell \in \{c, f\}. \quad (46)$$

We can then write the scheme satisfied by  $\tilde{\mathbf{U}}_\ell$  as:

$$M_h^\ell \frac{\tilde{\mathbf{U}}_\ell^{n+\frac{1}{2}+\frac{k}{q_\ell}} - \tilde{\mathbf{U}}_\ell^{n+\frac{1}{2}+\frac{k-2}{q_\ell}}}{2\Delta t_\ell} + A_h^\ell \tilde{\mathbf{U}}_\ell^{n+\frac{1}{2}+\frac{k-1}{q_\ell}} + B_h^\ell [\tilde{\mathbf{U}}_m]^{n+\frac{1}{2}+\frac{k-1}{q_\ell}} = 0, \quad (47)$$

which is clearly of second order in time under the following equality:

$$[\tilde{\mathbf{U}}_m]^{n+\frac{1}{2}+\frac{k-1}{q_\ell}} = \begin{cases} \frac{k \tilde{\mathbf{U}}_m^{n+3/2} + (2q_\ell - 2) \tilde{\mathbf{U}}_m^{n+1/2} + (2-k) \tilde{\mathbf{U}}_m^{n-1/2}}{2q_\ell}, & \text{if } 0 \leq k \leq 2, \\ \frac{(2k-2) \tilde{\mathbf{U}}_m^{n+3/2} + (2q_\ell - 2k + 2) \tilde{\mathbf{U}}_m^{n+1/2}}{2q_\ell}, & \text{if } k \geq 2. \end{cases}$$

## 6 Numerical results

Numerical 1D test experiments permit to check the convergence and second order accuracy of our method.

We have chosen to represent here the results if an experiment of ‘‘artificial’’ mesh refinement in 2D. The goal of the experiment is to check that no numerical artefact is produced by the change of mesh. We consider a waveguide geometry. The computational domain  $\Omega = \Omega_c \cup \Omega_f$ , with  $\Omega_c = [0, 20] \times [0, 10]$  and  $\Omega_f = [20, 25] \times [0, 10]$ , we take the space step  $h_c = 0.05$  and  $\Delta t_c$  satisfies the stability condition (32) (resp.  $h_f = h_c/2$  and  $\Delta t_f = \Delta t_c/2$ ) in the coarse mesh (resp. in the fine mesh) which correspond to a mesh refinement (1, 2). We consider the linearized Euler equations (8) with the initial conditions  $\mathbf{v}(x, 0) = 0$ ;  $p(x, 0) = \exp(-\log(2)r/100)$ ,  $r = ((x_1 - 10)^2 + (x_2 - 5)^2)^{1/2}$  and the boundary condition  $\mathbf{v} \cdot \mathbf{n} = 0$  on  $\Gamma$ . In the figure 1 (resp. figure 2) we present the snapshots of the pressure  $p$  for wave equation;  $\mathbf{M} = 0$  in (8) (resp. for aeroacoustic application with  $\mathbf{M} = (0.7, 0)$ ). For the both simulations, we can observe that there is no artificial reflected or transmitted wave at the interface  $\Sigma$  between the the domains  $\Omega_c$  and  $\Omega_f$ .

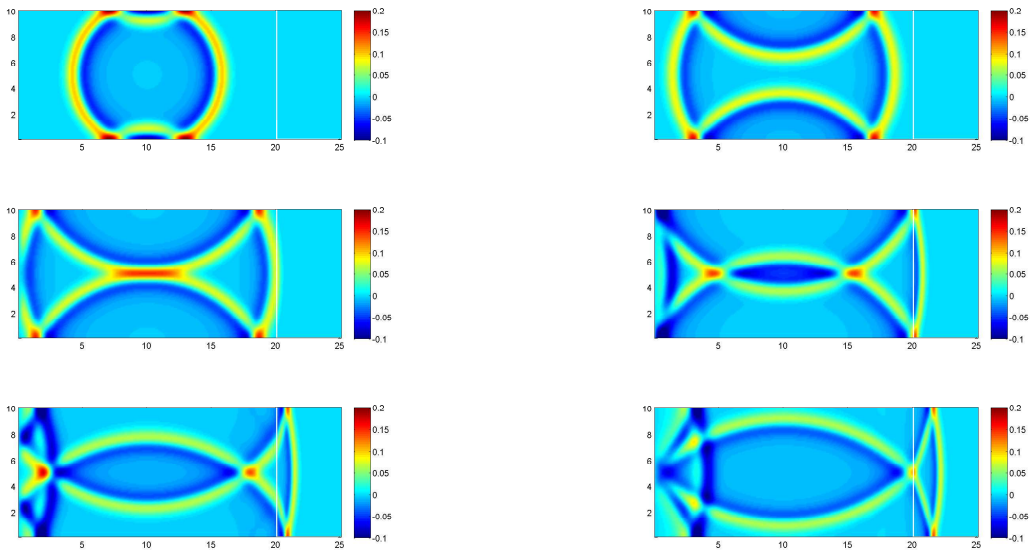


Fig. 1. Numerical simulations for the wave equation

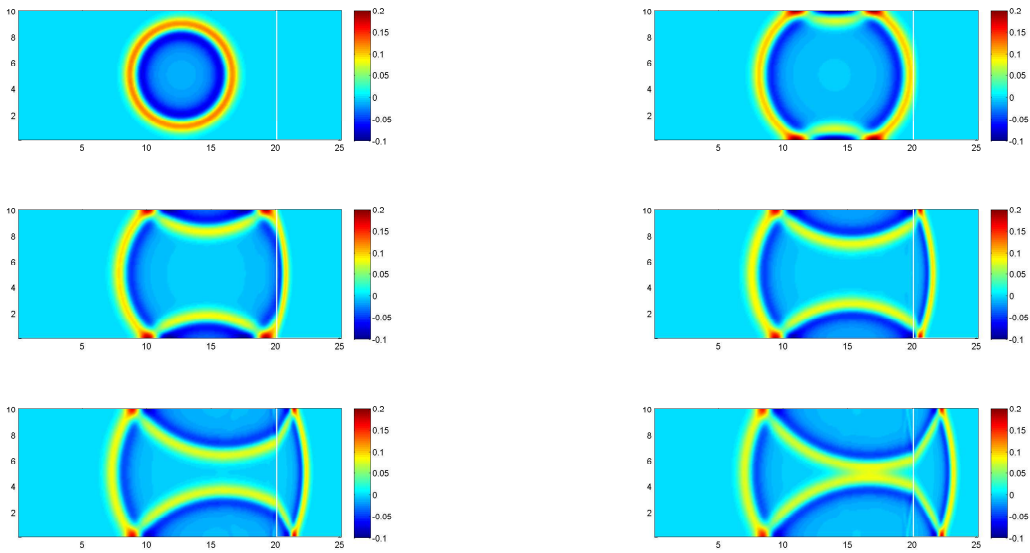


Fig. 2. Numerical simulations for the linearized Euler equations

## References

- [1] E. Bécache, P. Joly and J. Rodríguez, “Space-time mesh refinement for elastodynamics. numerical results”, *J. Comp. Meth. Appl. Mech. Eng.*, vol. 194, pp. 355-366, 2005.
- [2] B. Cockburn, G. E. Karniadakis and C.-W. Shu, editors, “Discontinuous Galerkin methods: Theory, computation and applications”, *Lecture notes in computational science and engineering*, vol. 11, Springer, 2000.
- [3] F. Collino, T. Fouquet and P. Joly, ”A conservative space-time mesh refinement method for the 1-D wave equation. I. Construction.”, *Numer. Math.*, vol. 95, pp. 197-221, 2003.

- [4] F. Collino, T. Fouquet and P. Joly, "A conservative space-time mesh refinement method for the 1-D wave equation. II. Analysis.", *Numer. Math.*, vol. 95, pp. 223-251, 2003.
- [5] F. Collino, T. Fouquet and P. Joly "Conservative space-time mesh refinement methods for the FDTD solution of Maxwell's equations", *Journal Computational Physics*, vol. 211, pp. 9-35, 2006.
- [6] A. Combescure, A. Gravouil "A numerical scheme to couple subdomains with different time-steps for predominantly transient analysis", *Comput. Meth. Appl. Mech. Engrg*, vol. 191, pp. 1129-1157, 2002.
- [7] J. Diaz and M. Grote, "Energy Conserving Explicit Local Time-Stepping for Second-Order Wave Equations", Technical Report 6377, INRIA, 2007.
- [8] M. Dumbser, M. Käser and E. Toro (2007) "An Arbitrary High Order Discontinuous Galerkin Method for Elastic Waves on Unstructured Meshes V: Local Time Stepping and p-Adaptivity", *Geophysical Journal International*, 171(2), pp.695-717, 2007
- [9] K. O. Friedrichs "Symmetric positive linear differential equations", *Comm. Pure. Appl. Math.*, vol. 11, pp. 333-418, 1958.
- [10] J. Hesthaven, T. Warburton, "Nodal Discontinuous Galerkin Methods. Algorithms, Analysis, and Applications", Springer, Series: Texts in Applied Mathematics , Vol. 54, 2008
- [11] P. Joly, J. Rodríguez, "An error analysis of conservative space-time mesh refinement methods for the one-dimensional wave equation", *SIAM J. Numer. Anal.*, vol. 43, 2, pp. 825-859, 2005.
- [12] S. Piperno, "Symplectic local time-stepping in non-dissipative DGTD methods applied to wave propagation problems", *M2AN Math. Model. Numer. Anal.*, vol. 40, pp. 815-841, 2006.
- [13] J. Rodríguez, "A new space-time mesh refinement method for the wave equation", *C. R. Math. Acad. Sci. Paris*, vol. 339, no. 6, pp. 445-450, 2004.