



# Tutorial on Autonomous Vehicles Technologies for Perception & Decision-Making

Christian Laugier

## ► To cite this version:

Christian Laugier. Tutorial on Autonomous Vehicles Technologies for Perception & Decision-Making. Doctoral. Institut d'Automne en Intelligence Artificielle 2018 (IA2 2018), France. 2018. cel-01969720

**HAL Id: cel-01969720**

**<https://inria.hal.science/cel-01969720>**

Submitted on 7 Jan 2019

**HAL** is a multi-disciplinary open access archive for the deposit and dissemination of scientific research documents, whether they are published or not. The documents may come from teaching and research institutions in France or abroad, or from public or private research centers.

L'archive ouverte pluridisciplinaire **HAL**, est destinée au dépôt et à la diffusion de documents scientifiques de niveau recherche, publiés ou non, émanant des établissements d'enseignement et de recherche français ou étrangers, des laboratoires publics ou privés.

Tutorial @ Institut d'Automne en IA 2018 (IA2 2018)  
Campus ISAE-Supaero, Oct 15-19 2018

# Autonomous Vehicles Technologies for Perception and Decision-Making

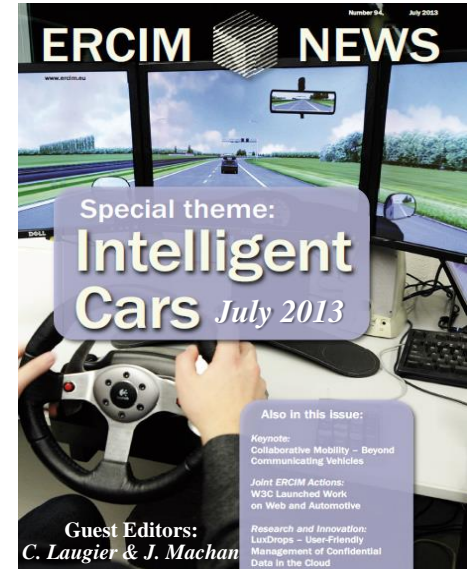
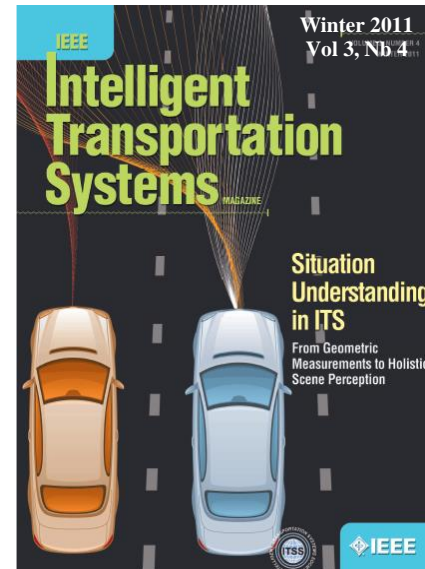
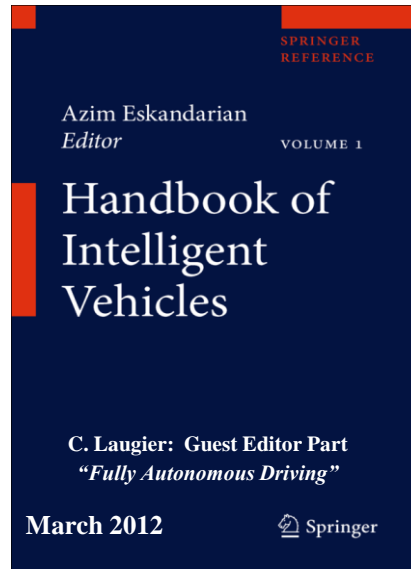
Dr HDR Christian LAUGIER

Research Director at Inria & Scientific Advisor for Probayes and for Baidu China

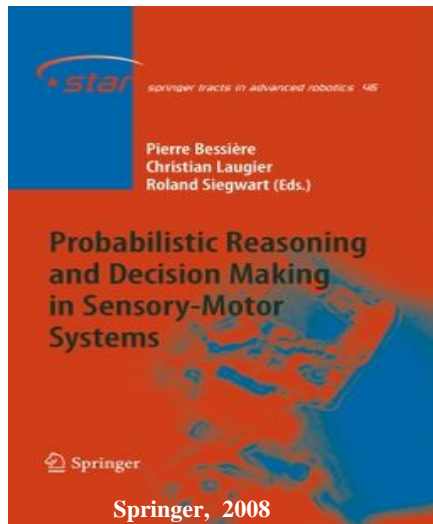
Inria Grenoble Rhône-Alpes, Chroma team

*Christian.laugier@inria.fr*

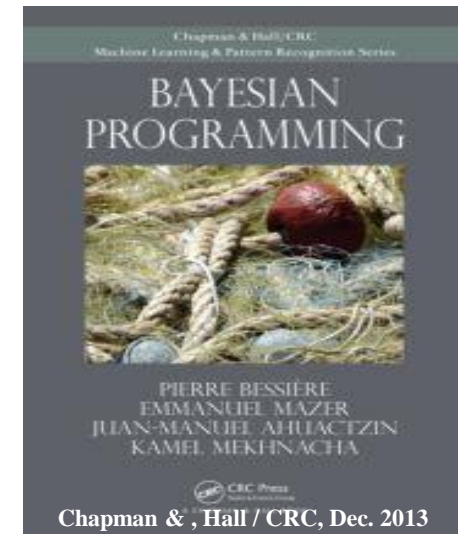




# Relevant Literature on Robotics & IV & ITS



**IEEE RAS Technical Committee on "AGV & ITS"**  
Chairs: Ph. Martinet, C. laugier, C. Stiller  
*Numerous Workshops & Journal Special issues since 2002*  
**=> Membership open**



# Content of the Tutorial

- ❑ **Socio-economic & Technological Context + State of the Art**
- ❑ Decisional & Control Architecture – Outline
- ❑ Bayesian Perception (*key Technology 1*)
- ❑ Embedded Bayesian Perception & Experimental results
- ❑ Bayesian Risk Assessment & Decision-making (*Key Technology 2*)



# Cars & Human Mobility

## *A current Psychological & Technological breakthrough*

A quick on-going change of the role & concept of **private car** in human society !



*Last century => Ownership & Feeling of Freedom  
Affective behaviors & Shown Social position  
Driving pleasure ... but less and less true !*

*Next cars generation => Focus on Technologies for  
Safety & Comfort & Reduced Pollution  
Driving Assistance v/s Autonomous Driving*

### ❖ Context

- *Expected 3 Billions vehicles & 75% population in cities in 2050 => Current model not scalable !*
- *Accidents: ~1.2 Million fatalities/Year in the world => No more accepted !*
- *Driving safety & Nuisance issues (pollution, noise, traffic jam, parking ...) are becoming a major issue for Human Society & Governments & Industry*

# Cars & Human Mobility

*A current Psychological & Technological Evolution*

A quick on-going change of the role & concept of **private car**



*Last century => Ownership & Feelings  
Affective behaviors & Shown Status  
Driving pleasure ... but less safety*

*Modern car generation => Focus on Technologies for  
Safety & Comfort & Reduced Pollution  
Driving Assistance v/s Autonomous Driving*

## ❖ Technologies

- => Shared mobility, carpooling, more ADAS & Autonomy (e.g. Tesla autopilot)
- => New business models (e.g. Uber, BlaBlaCar, Robot Taxis (Uber, Nutonomy)...

Market for Automotive Industry

*\$120 billions in 2012 & Expected \$261 billions in 2020 (1)*

(1) Forecast of the Global Market for ADAS Systems by 2020. ABI Research. 2013.

# Autonomous Cars – *State of the Art (~ 30 years R&D)*

## ❑ Some early results in Europe (80's & 90's)

### 1986 VaMors (Dickmann, Munich U)

=> First autonomous vehicle on a road (mainly based on CV)

=> Followed by EU project Prometheus



### Pioneer work at INRIA in the 90's

- ✓ Autonomous parking
- ✓ Platooning in cities
- ✓ People mover (Cycab)



PRAXITELE





# Autonomous Cars – *State of the Art (~ 30 years R&D)*

## ❑ Some international important Events & Results (*first decade 21<sup>st</sup> century*)



### **2004& 2006 Darpa Grand Challenges** *High speed & Off-road*

*Significant step towards Motion Autonomy  
... But still some uncontrolled behaviors in 2004 !!!*



### **2007 Darpa Urban Challenge**

*97 km, 50 manned & unmanned vehicles, 35 teams  
... Impressive progress towards motion autonomy, but still some collisions  
(decision-making mainly based on automaton)*



### **2010 VIAC Intercontinental Autonomous Challenge**

*13 000 km covered, 3 months race, leader + followers (A. Broggi)  
=> See Spring 2011 IEEE RAM issue for more details*



### **2011 Google Car project**

*Fleet of 6 automated Toyota Prius, equipped with a costly 3D lidar (dense mapping)  
140 000 miles covered on California roads with occasional human interventions*



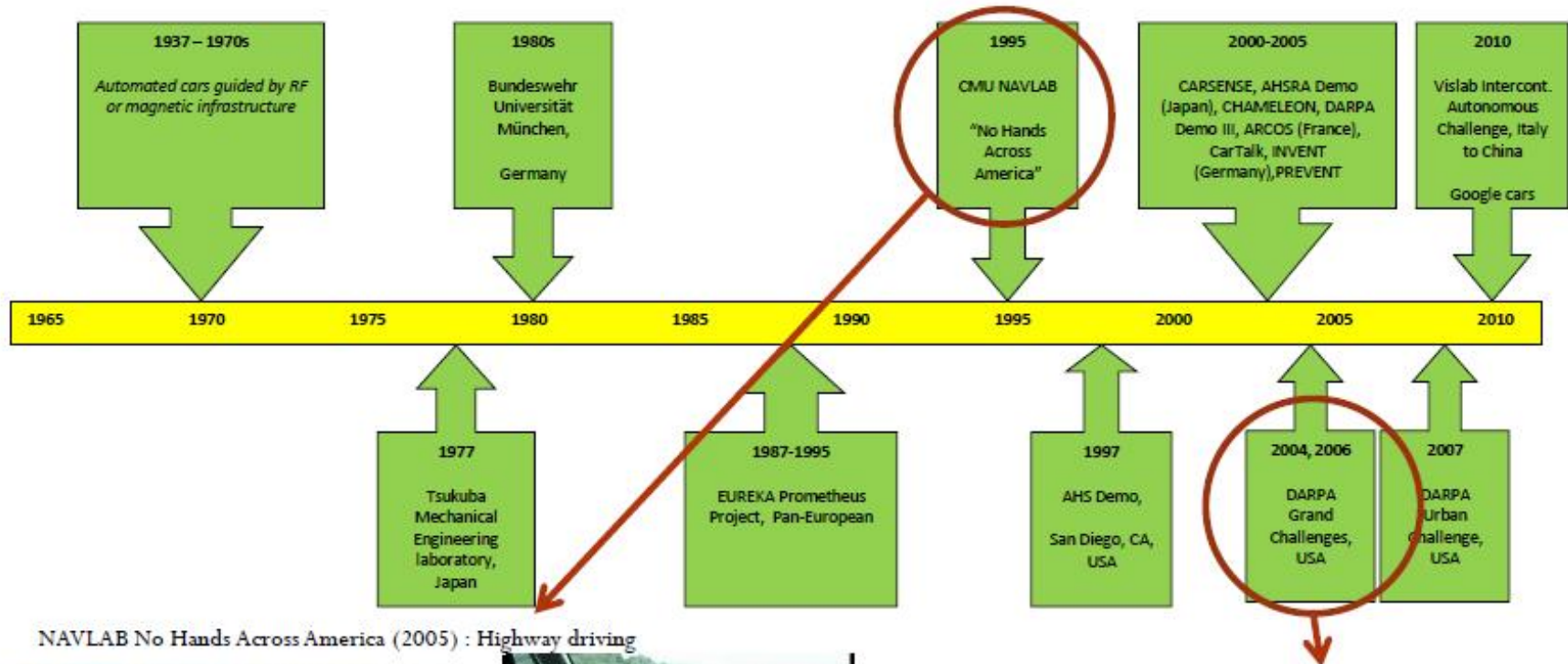
# Autonomous Cars – *State of the Art* (~ 30 years R&D)

Credit to Paul E. Rybski, CMU (2010)

The path to Commercial Autonomous Cars: The Darpa Urban Challenge and Beyond



## Brief Timeline of Autonomous Cars



NAVLAB No Hands Across America (2005) : Highway driving



<http://www.cs.cmu.edu/af3/cs/project/alr/www/>



[http://www.youtube.com/watch?v=skJVV1\\_4l8E](http://www.youtube.com/watch?v=skJVV1_4l8E)

DARPA Grand Challenge (2004, 2006): High-speed offroad driving



<http://www.cs.cmu.edu/~red/Red/redteam.html>

<http://cs.stanford.edu/group/roadrunner/old/announcements.html>

# Autonomous Cars & Driverless Vehicles

- Strong involvement of Car Industry & Large media coverage
- An expected market of 500 B€ in 2035
- Technologies Validation & Certification => *Numerous recent & on-going real-life experiments + Simulation & Formal methods (e.g. EU Enable-33 2016-19)*



Tesla Autopilot based on Radar & Mobileye  
*Commercial ADAS product*



Waymo, Google  
3D Lidars & Dense 3D mapping  
*Numerous vehicles & Millions of miles driven*



Cybus experiment, La Rochelle 2012  
=> CityMobil Project & Inria



Drive Me trials (volvo, 2017)

- 100 Test Vehicles in Göteborg, 80 km, 70km/h
- No pedestrians & Plenty of separations between lanes



Robot Taxi testing in US (Uber, Waymo) & Singapore (nuTonomy)  
=> **Mobility Service**, Numerous Sensors ... *Safety driver in the car during testing*





# Safety issues: *Example of the Tesla accident (May 2016)*

## ❑ Safety is still insufficient (*a false sense of Safety for users ?*)

=> *Still some Perception & Situation Awareness errors (even with commercial systems)*

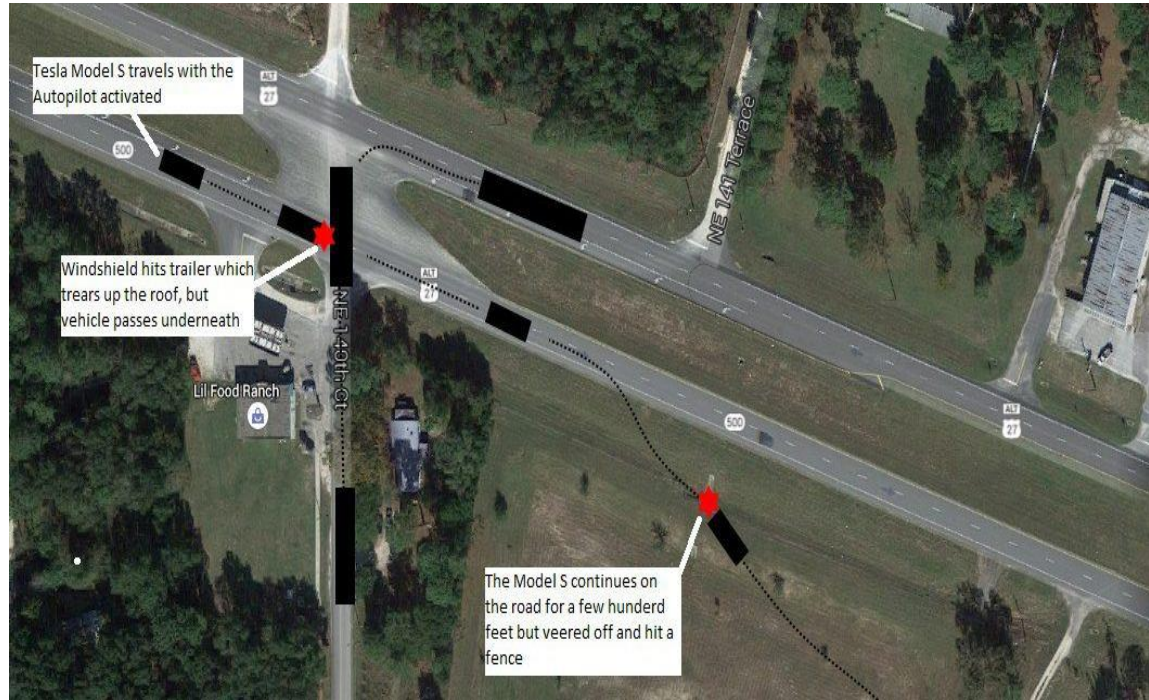
=> *On May 7<sup>th</sup> 2016, Tesla driver killed in a crash with Autopilot active (and driver not attentive)*



Tesla Model S – Autopilot

Front perception:

*Camera (Mobileye) + Radar + US sensors*



**Autopilot didn't detected the trailer as an obstacle** (*NHTSA investigation + Tesla conjecture*)

❖ **Camera** => *White color against a brightly lit sky ?*

❖ **Radar** => *High ride height of the trailer probably confused the radar into thinking it is an overhead road sign ?*

# Safety issues: *Example of the Uber Accident (March 2018)*

- ❑ Self-driving Uber kills a woman in first fatal crash involving pedestrian  
*Tempe, Arizona, March 2018*
- ❑ The vehicle was moving at 40 mph and didn't reduced its speed before the crash (collision risk not detected). The Safety Driver didn't reacted
- ❑ In spite of the presence of multiple onboard sensors (several lidars in particular), the perception system didn't predicted the collision !



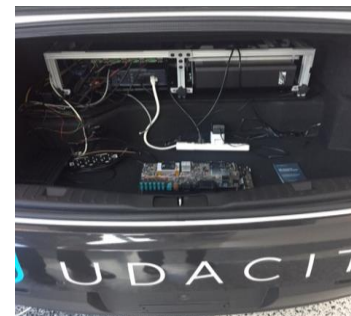


# Perception: State of the Art & Today's Limitations

- ❑ Despite significant improvements during the last decade of both Sensors & Algorithms, **Embedded Perception** is still one of the major bottleneck for Motion Autonomy

*=> Obstacles detection & classification errors, incomplete processing of mobile obstacles, collision risk weakly address, scene understanding partly solved...*

- ❑ **Lack of Robustness & Efficiency & Embedded integration** is still a significant obstacle to a full deployment of these technologies



Lack of Robustness  
& Efficiency

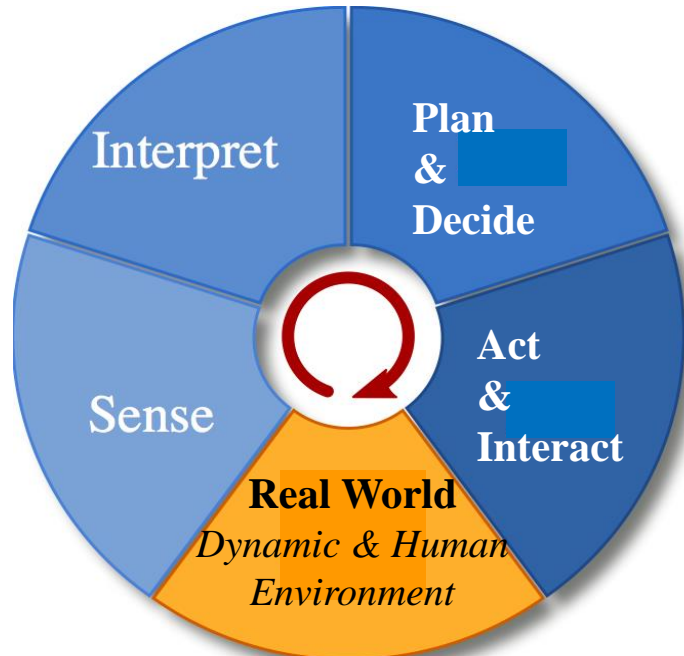
Lack of Integration  
into Embedded  
Sw/Hw

- Until recently, car trunks was most of the time full of electronics & computers & processor units
- On-board high computational capabilities & dedicated softwares are still required, even if new products currently appear on the market (e.g. Nvidia Drive-PX, Ambarella embedded vision platform ..)

# Content of the Tutorial

- ❑ Socio-economic & Technological Context + State of the Art
- ❑ **Decisional & Control Architecture – Outline**
- ❑ Bayesian Perception (*key Technology 1*)
- ❑ Embedded Bayesian Perception & Experimental results
- ❑ Bayesian Risk Assessment & Decision-making (*Key Technology 2*)

# Decisional & Control Architecture – *Outline*

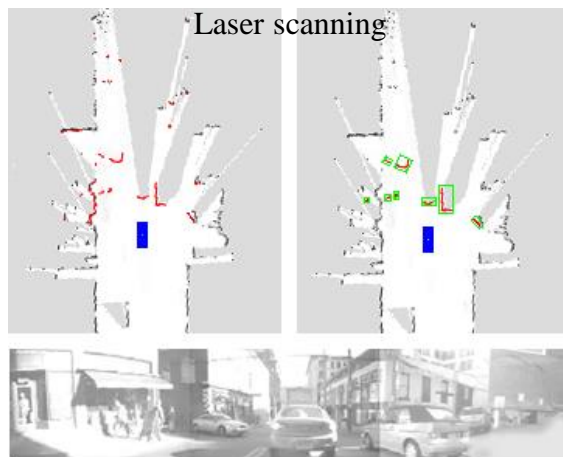
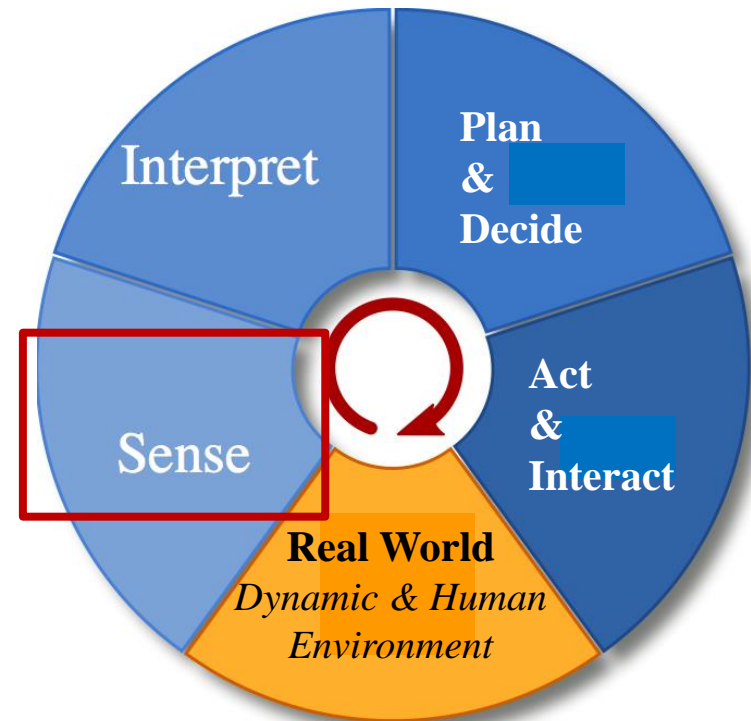


❑ **How to control Robot actions in a Dynamic world populated by Human Beings (under strong real-time constraints) ?**

❑ **Combining & Adapting interdependent functions for:**

- ✓ Sensing the environment using various sensors
- ✓ Interpreting the dynamic scene (using Semantics and Prior Knowledge)
- ✓ Planning Robot motions & Deciding of the most appropriate action to be executed
- ✓ Acting & Interacting in the real world (Safety & Acceptability)

# Decisional & Control Architecture – *Sensing*



## ☐ Objective

Perceive what is happening in the Dynamic Scene using various sensors

## ☐ Main Difficulty

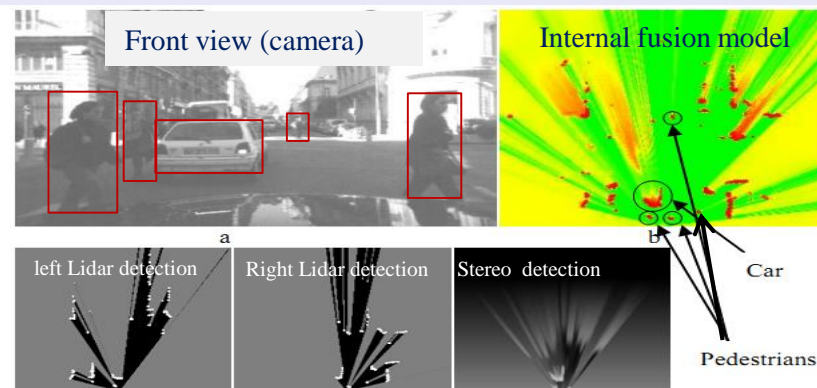
- ✓ Huge heterogeneous sensory data
- ✓ Sensing errors & Uncertainty
- ✓ Real-time processing

## ☐ Main Functions

- ✓ Localization & Mapping (SLAM)
- ✓ Static Obstacles + Mobile Objects Detection & Tracking

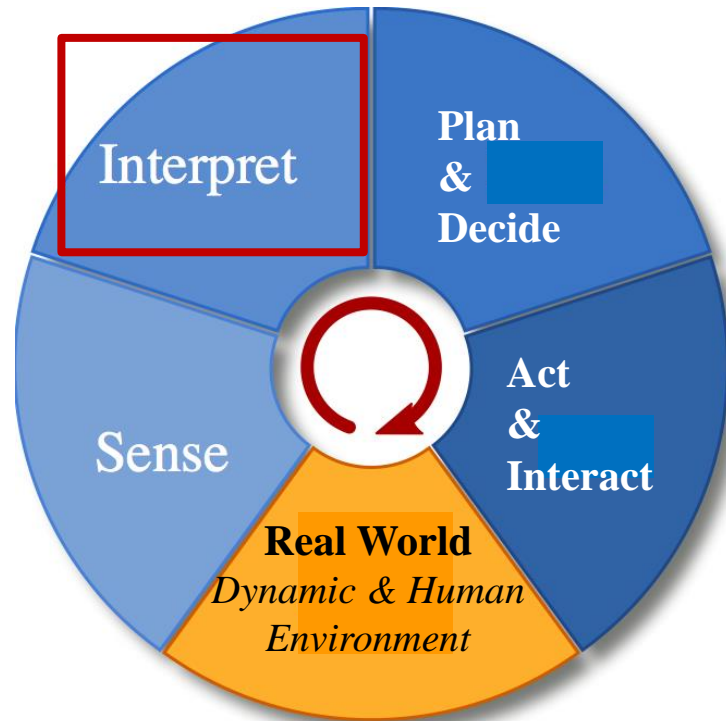
## ☐ Main Models & Algorithms

- ✓ Bayesian Filtering
- ✓ Feature based & Grid based approaches





# Decisional & Control Architecture – *Scene Understanding*

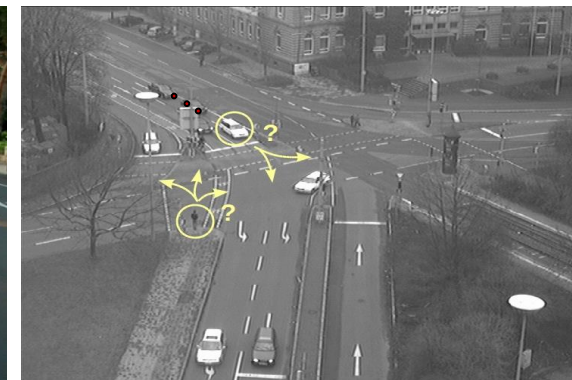
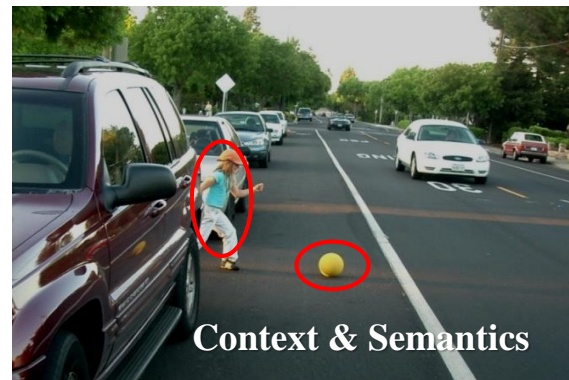
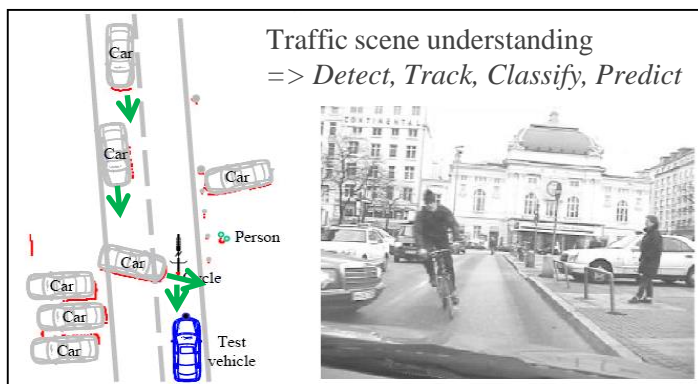


## ☐ Objective

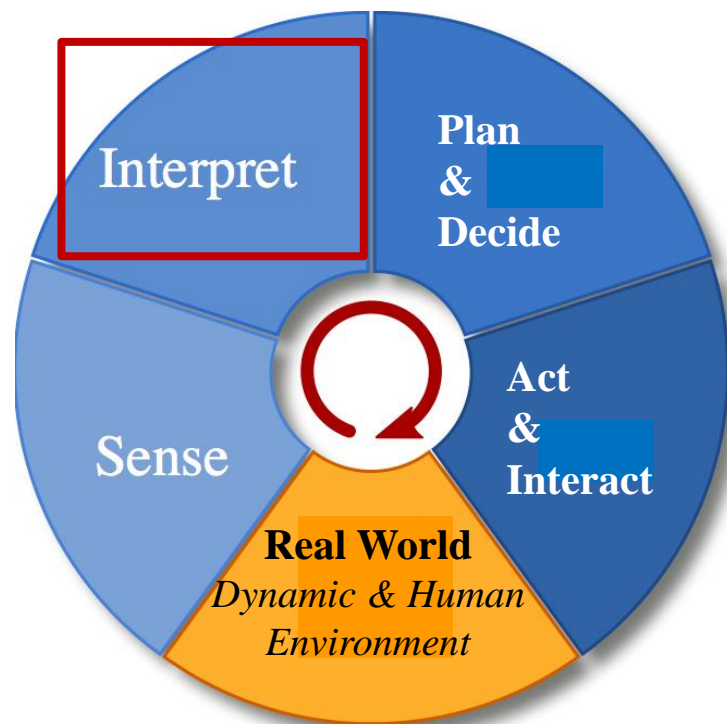
Understand the content of the Dynamic Scene using **Contextual & Semantic knowledge**

## ☐ Main Difficulty

- ✓ Uncertainty
- ✓ Real-time processing
- ✓ Reasoning about various type of knowledge (history, context, semantics, prediction)



# Decisional & Control Architecture – *Scene Understanding*

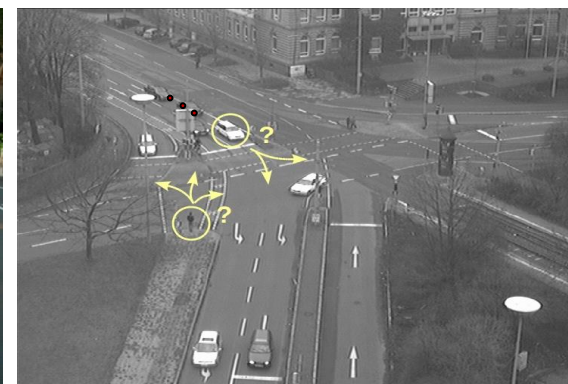
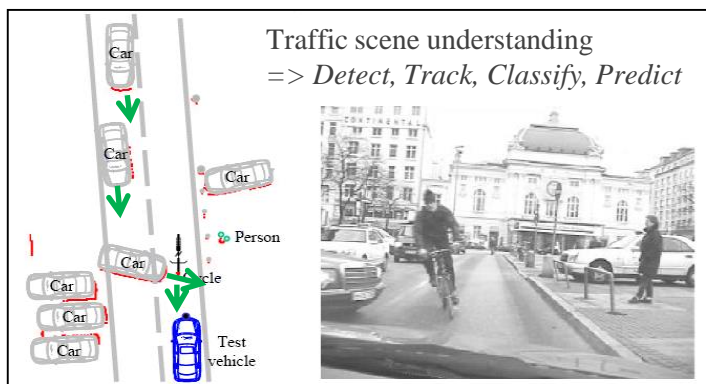


## □ Main Functions

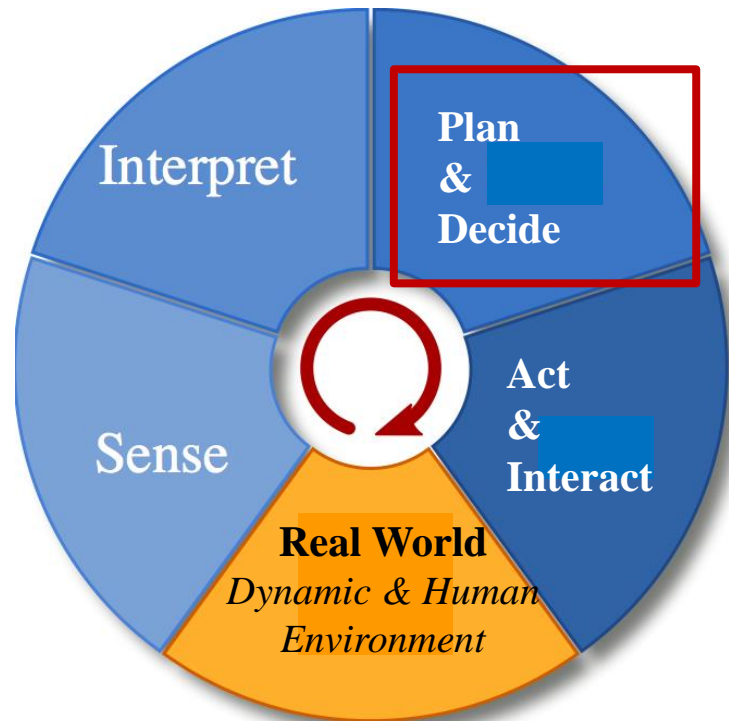
- ✓ Detection & Tracking of Mobile Objects (DATMO)
- ✓ Objects classification (recognition)
- ✓ Prediction & Risk Assessment (avoiding future collisions)

## □ Main Models & Algorithms

- ✓ Bayesian Perception Paradigm
- ✓ Behaviors modeling & learning
- ✓ Bayesian approaches for Prediction & Risk Assessment



# Decisional & Control Architecture – *Decision-making*



## ❑ Objective

Planning robot motions & Deciding of the most appropriate action to be executed by the robot (Goal & Context & Risk)

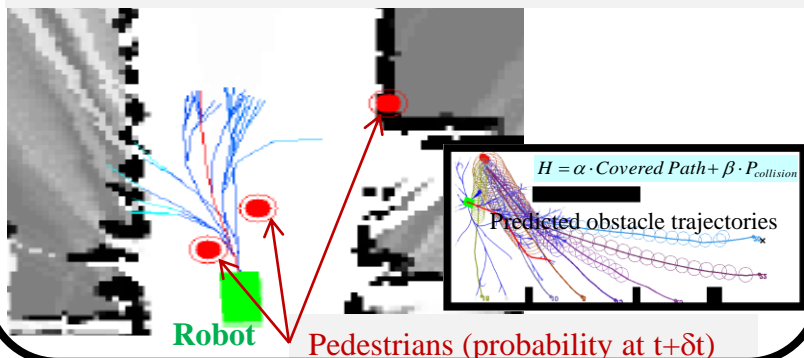
## ❑ Main Difficulty & Functions

- ✓ On-line Motion Planning under various constraints (time, kinematic, dynamic, uncertainty, collision risk, social)
- ✓ Decision making under uncertainty using contextual data (history, semantics, prediction)

## ❑ Main Models & Algorithms

- ✓ Iterative Risk-based Motion Planning (e.g. Risk-RRT)
- ✓ Decision making using Contextual data & Bayesian networks

### Iterative Motion Planning under Time & Risk constraints

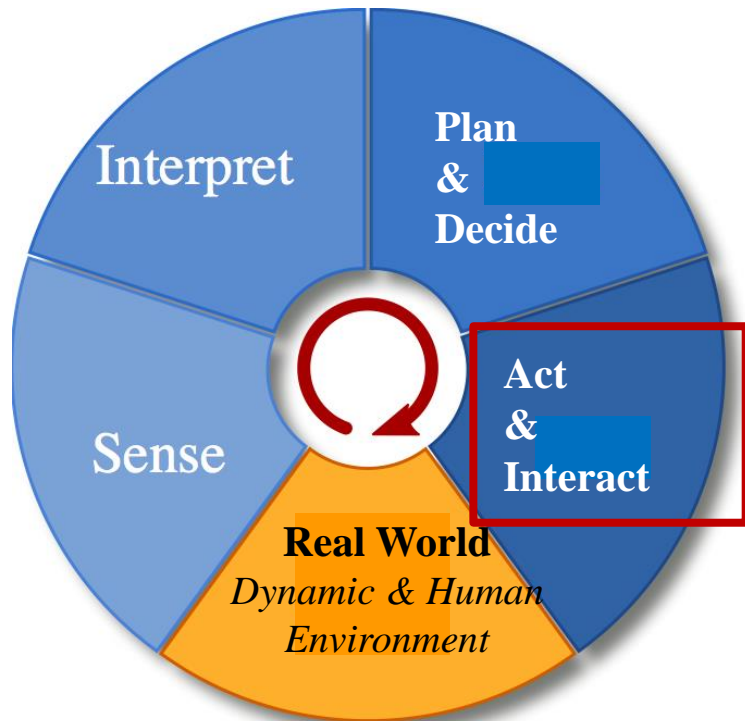


### Decision-making (avoiding collision)





# Decisional & Control Architecture – *Human Aware Motion*



## ☐ Objective

Controlling the robot for executing **Safe & Socially Acceptable robot actions**, while taking into account the related **Human – Robot Interactions**

## ☐ Main Difficulty & Functions

- ✓ Robot navigation while taking into account both Safety & Social constraints
- ✓ **Human in the loop**

## ☐ Main Models & Algorithms

- ✓ Human-Aware Navigation paradigm (safety & social filters)
- ✓ Intuitive Human-Robot Interaction





# Content of the Tutorial

- ❑ Socio-economic & Technological Context + State of the Art
- ❑ Decisional & Control Architecture – Outline
- ❑ **Bayesian Perception (*key Technology 1*)**
- ❑ Embedded Bayesian Perception & Experimental results
- ❑ Bayesian Risk Assessment & Decision-making (*Key Technology 2*)

# Embedded Perception: Main features

Complex Dynamic Scenes understanding



Situation Awareness & Decision-making



ADAS & Autonomous Driving

Dealing with unexpected events  
e.g. Road Safety Campaign, France 2014



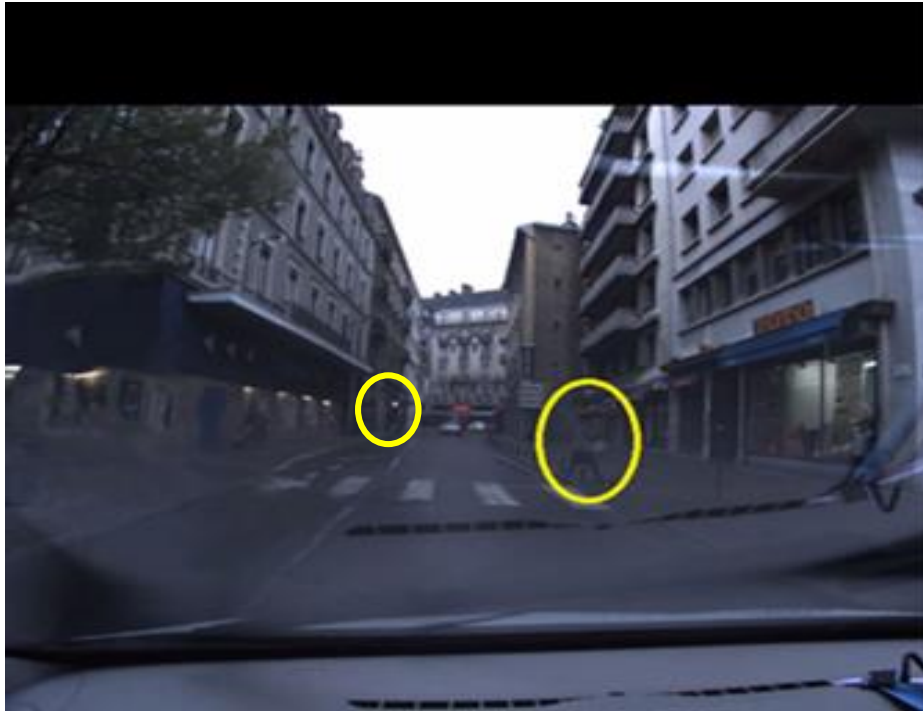
Anticipation & Prediction  
for avoiding upcoming accidents

## Main features

- ✓ Dynamic & Open Environments => *Real-time processing*
- ✓ Incompleteness & Uncertainty => *Appropriate Model & Algorithms (probabilistic approaches)*
- ✓ Sensors limitations => *Multi-Sensors Fusion*
- ✓ Human in the loop => *Interaction & Behaviors & Social Constraints (including traffic rules)*
- ✓ Hardware / Software integration => *Satisfying Embedded constraints*

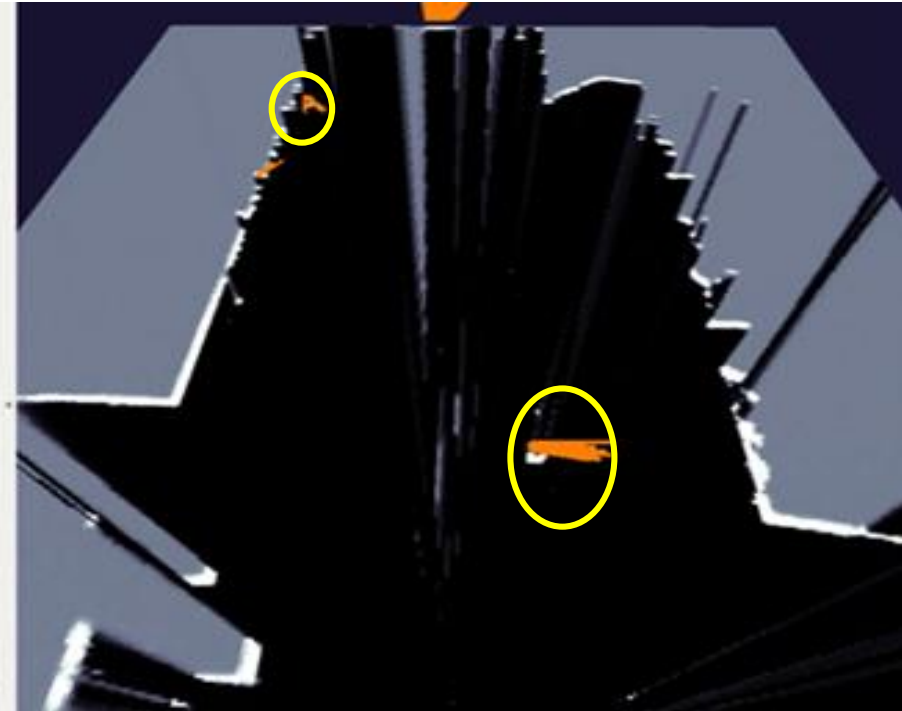
# Improving robustness using Multi-Sensors Fusion

Camera Image at Dusk (*Pedestrians not detected*)



Camera output depends on lighting conditions  
*Cheap & Rich information & Good for classification*

Processed Lidar data (*Pedestrians detected*)



Lidar more accurate & can work at night  
*Good for fine detection of objects ... but still Expensive*

- Any sensor may generate perception errors => It is mandatory to develop **Embedded Robust & Efficient “Multi-Sensors Fusion”** approaches (e.g. using probabilistic models & filtering)
- A new generation of **affordable “Solid State Lidars”** is supposed to shortly arrive on the market !
  - => No mechanical component & Expected cost less than 1000 US\$ before mass production
  - => Numerous announcements since Spring 2016 ... **but products not yet on the market !!**

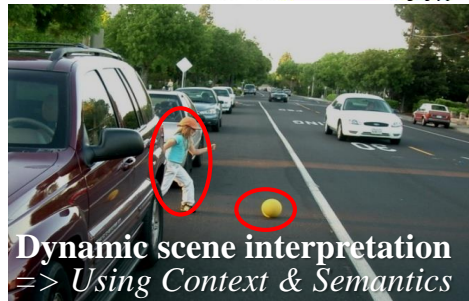
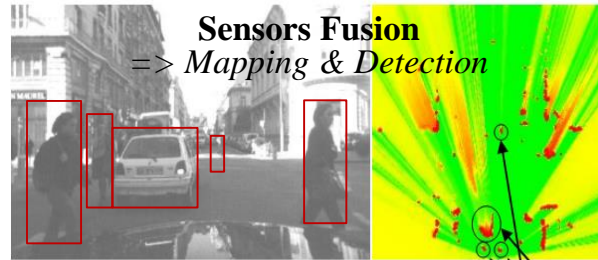


# Key Technology: Embedded Bayesian Perception



**Embedded Multi-Sensors Perception**

⇒ *Continuous monitoring of the dynamic environment*



## ❑ Main challenges

- ✓ *Noisy data, Incompleteness, Dynamicity, Discrete measurements*
- ✓ *Strong Embedded & Real time constraints*

## ❑ Approach: Embedded Bayesian Perception

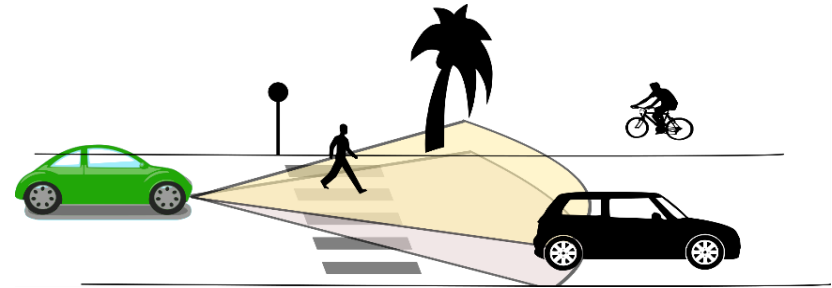
- ✓ *Reasoning about Uncertainty & Time window (Past & Future events)*
- ✓ *Improving robustness using Bayesian Sensors Fusion*
- ✓ *Interpreting the dynamic scene using Contextual & Semantic information*
- ✓ *Software & Hardware integration using GPU, Multicore, Microcontrollers...*



# Bayesian Perception : Basic idea

## □ Multi-Sensors Observations

*Lidar, Radar, Stereo camera, IMU ...*



Bayesian  
Multi-Sensors Fusion

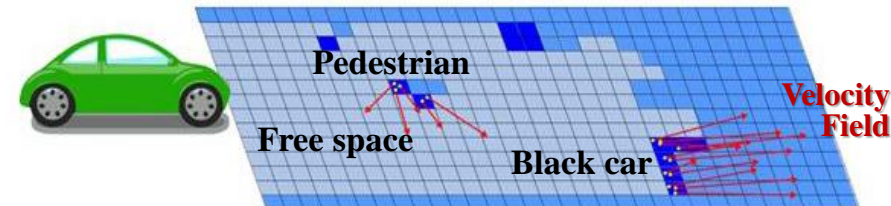
**Real-time**

## □ Probabilistic Environment Model

- ✓ *Sensor Fusion*
- ✓ *Occupancy grid integrating uncertainty*
- ✓ *Probabilistic representation of Velocities*
- ✓ *Prediction models*

$P[o|Z,C]$  :

■  $\simeq 0$    ■  $\simeq 0.5$    ■  $\simeq 1$



**Concept of Dynamic Probabilistic Grid**  
⇒ Occupancy & Velocity probabilities  
⇒ Embedded models for Motion Prediction

## □ Main philosophy

*Reasoning at the grid level as far as possible for both :*

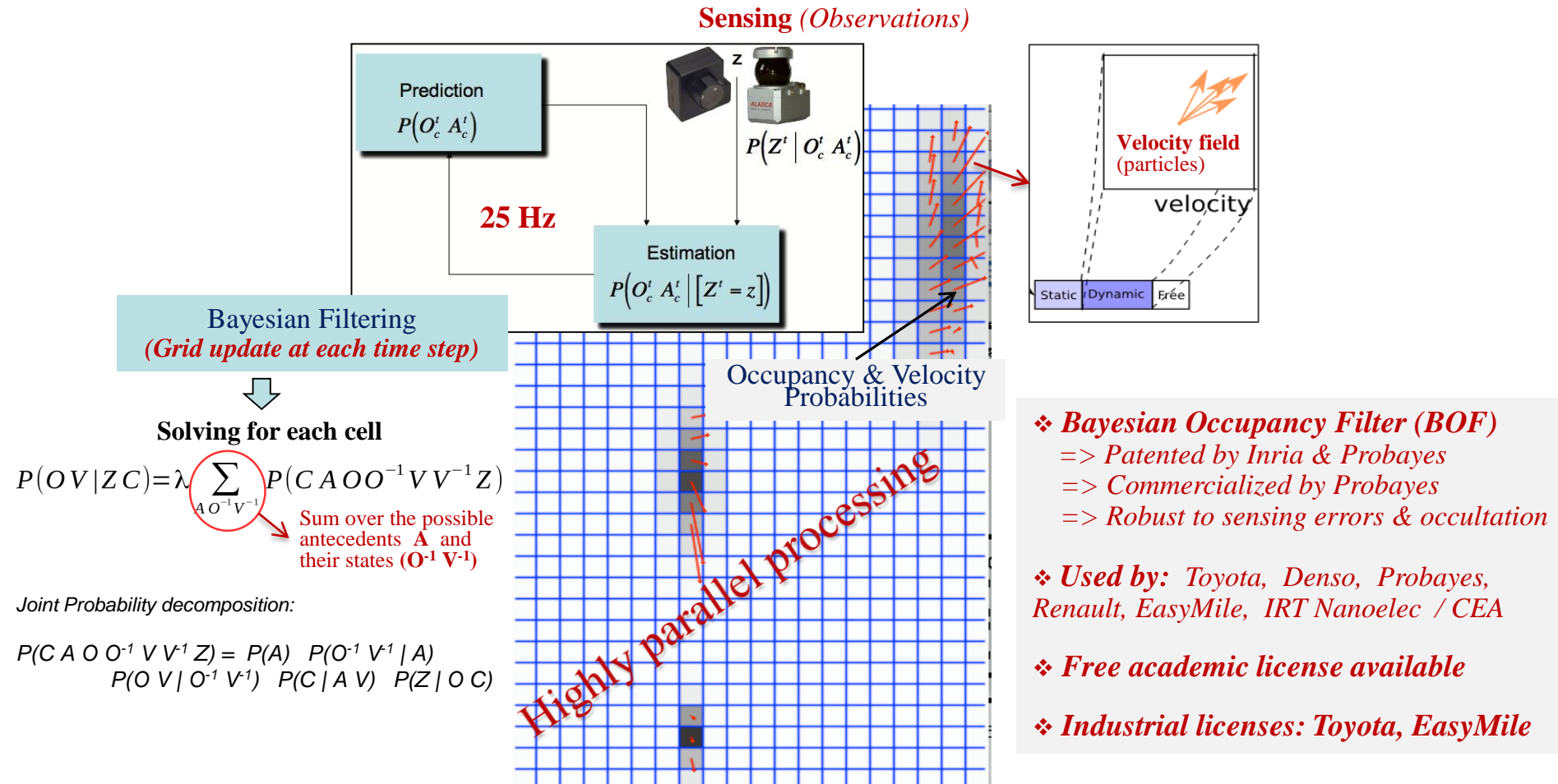
- **Improving efficiency** (highly parallel processing)
- **Avoiding traditional object level processing problems** (e.g. detection errors, wrong data association...)



# A new framework: Dynamic Probabilistic Grids

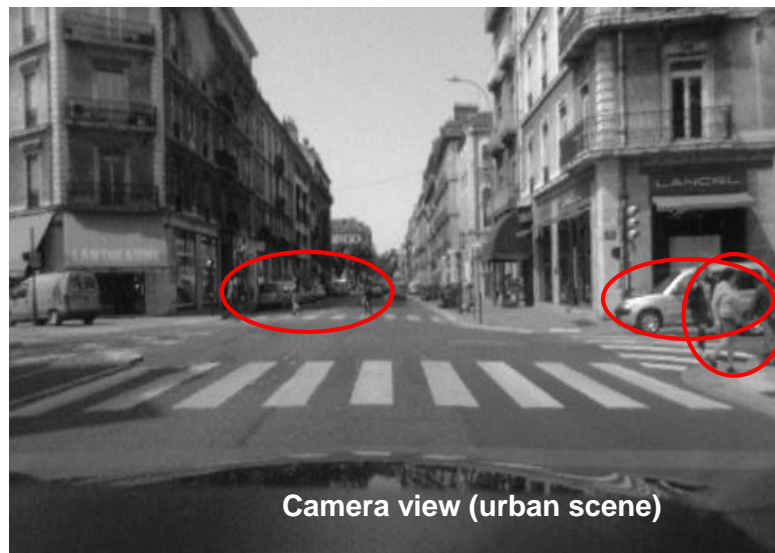
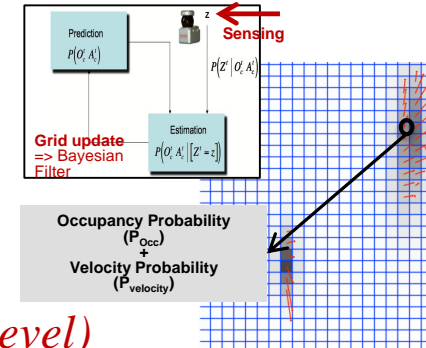
## => A clear distinction between Static & Dynamic & Free components

[Coué & Laugier IJRR 05] [Laugier et al ITSM 2011] [Laugier, Vasquez, Martinelli Mooc uTOP 2015]

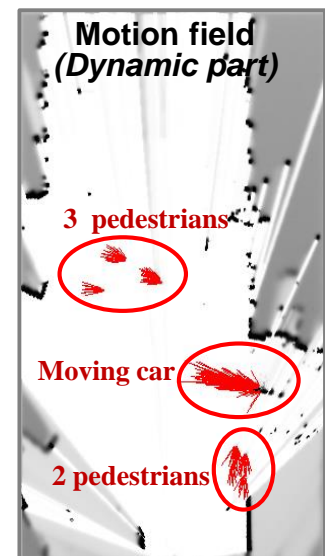


# Bayesian Occupancy Filter (BOF) – Main Features

- Estimate **Spatial occupancy** for each cell of the grid  $P(O | Z)$
- **Grid update** is performed in each cell in parallel (using *BOF equations*)
- **Extract Motion Field** (using *Bayesian filtering & Fused Sensor data*)
- **Reason at the Grid level** (i.e. *no object segmentation at this reasoning level*)



Sensors data fusion  
+  
Bayesian Filtering



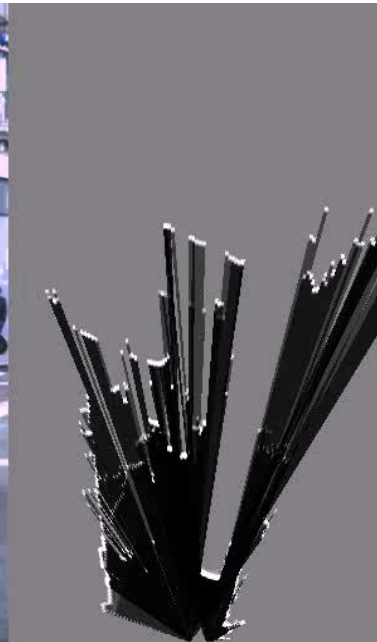
**Exploiting the Dynamic information for a better Understanding of the Scene !!**

# Concept illustration in a dense Urban Environment

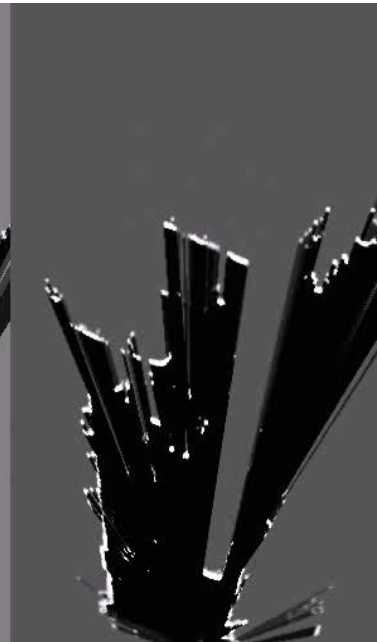
## Observed Urban Traffic scene



**Ego Vehicle** (*not visible on the video*)



OG Left Lidar



OG Right Lidar



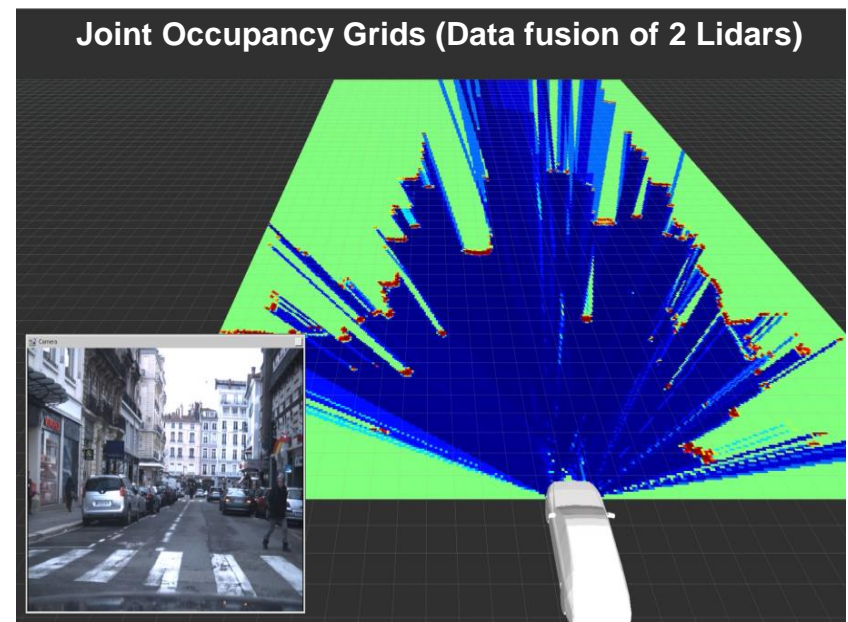
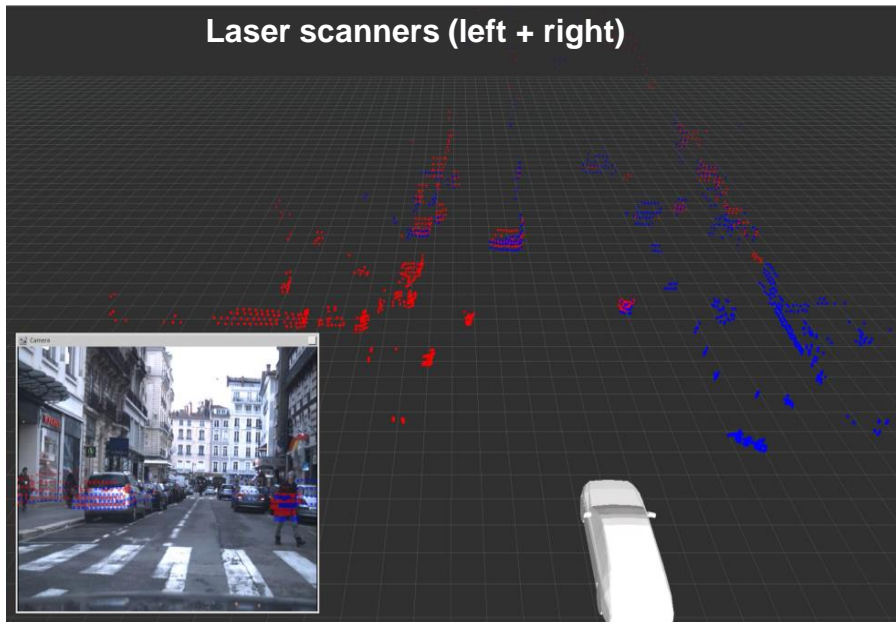
OG Fusion  
+  
Velocity Fields





# Data fusion – *The joint Occupancy Grid*

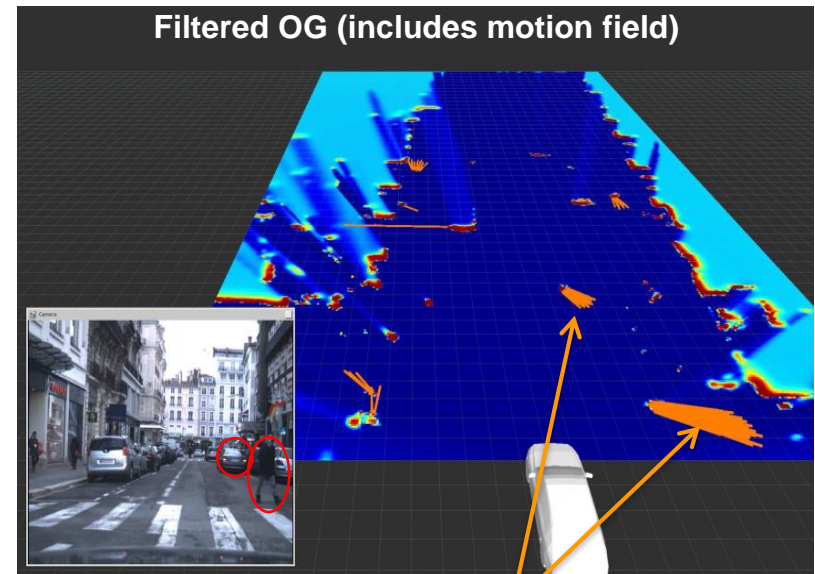
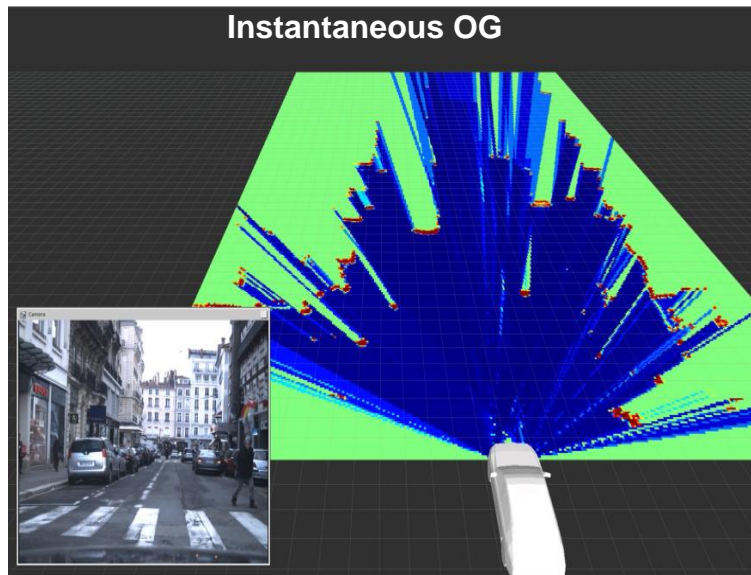
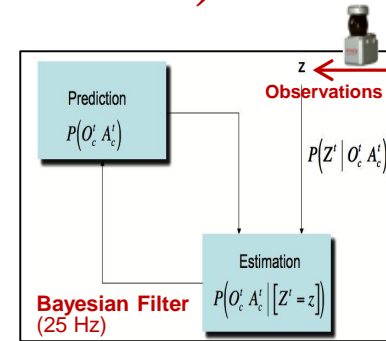
- Observations  $\mathbf{Z}_i$  are given by each sensor  $i$  (*Lidars, cameras, etc*)
- For each set of observation  $\mathbf{Z}_i$ , Occupancy Grids are computed:  $P(\mathbf{O} / \mathbf{Z}_i)$
- Individual grids are merged into a single one:  $P(\mathbf{O} / \mathbf{Z})$



# Taking into account dynamicity

## => *Filtered Occupancy Grid (Bayesian filtering)*

- **Filtering** is achieved through the *prediction/correction loop (Bayesian Filter)*  
=> *It allows to take into account grid changes over time*
- **Observations** are used to update the environment model
- Update is performed in each cell in parallel (*using BOF equations*)
- **Motion field** is constructed from the resulting filtered data



**Motion fields are displayed in orange color**

# Bayesian Occupancy Filter – How it works ?

## *Formalism*

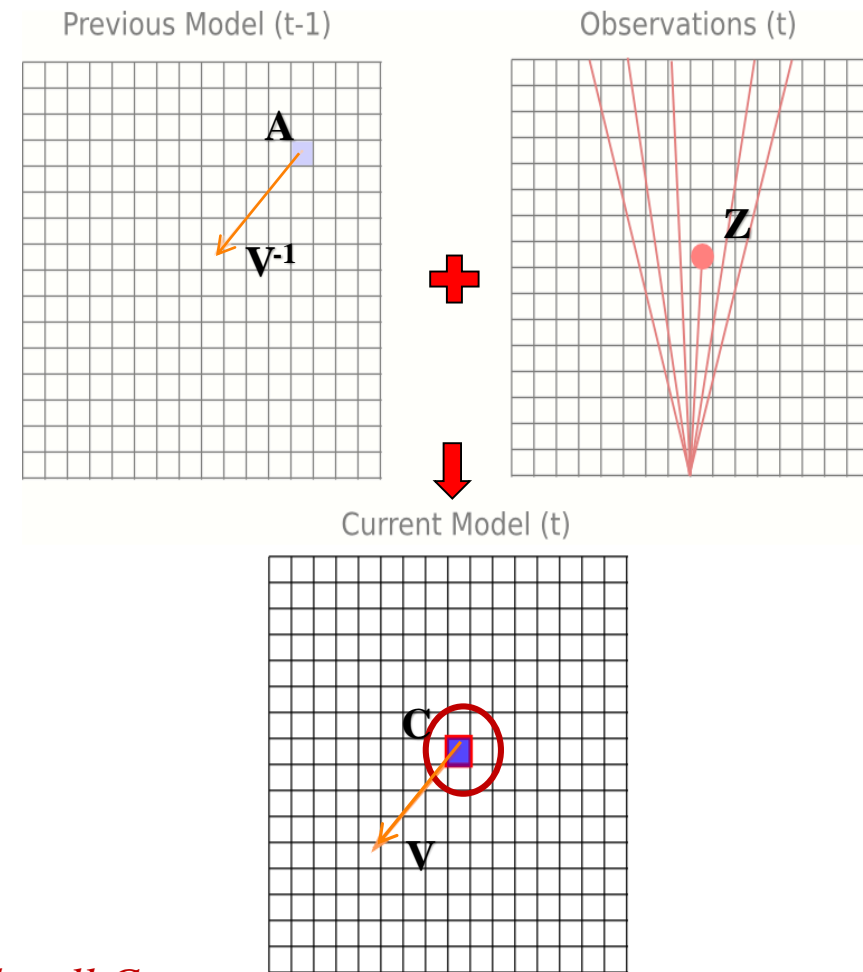
### ○ Variables:

- $C$  : current cell
- $A$  : antecedent cell, i.e. the cell from which the occupancy of the current cell comes from
- $O$  : occupancy of the current cell  $C$
- $O^{-1}$  : previous occupancy in the antecedent cell
- $V$  : current velocity
- $V^{-1}$  : previous velocity in the antecedent
- $Z$  : observations (sensor data)

### ○ Objective:

**Evaluate  $P(O \mid V \mid Z \mid C)$**

*=> Probability of **Occupancy & Velocity** for each cell  $C$ ,  
Knowing the **observations  $Z$**  & the **cell location  $C$**  in the grid*





# Bayesian Occupancy Filter – How it works ?

## *How to theoretically compute $P(O V | Z C)$ ?*

$$P(O V | Z C) = \lambda \sum_{A O^{-1} V^{-1}} P(C A O O^{-1} V V^{-1} Z)$$

Sum over the possible antecedents **A** and their states (**O**<sup>-1</sup> **V**<sup>-1</sup>) at time t-1

The joint probability term can be re-written as follows:

$$P(C A O O^{-1} V V^{-1} Z) = P(A) P(O^{-1} V^{-1} | A) P(O V | O^{-1} V^{-1}) P(C | A V) P(Z | O C)$$

**Joint probability**  $\Rightarrow$  used for the update of  $P(O V | Z C)$

**$P(A)$**  : Selected as **uniform** (every cell can a priori be an antecedent)

**$P(O^{-1} V^{-1} | A)$**  : Result from the previous iteration

**$P(O V | O^{-1} V^{-1})$**  : **Dynamic model**

**$P(C | A V)$**  : **Indicator function** of the cell **C** corresponding to the “**projection**” in the grid of the antecedent **A** at a given velocity **V**

**$P(Z | O C)$**  : **Inverse sensor model**

# Bayesian Occupancy Filter – How it works ?

## *How to theoretically compute $P(O V | Z C)$ ?*

$$P(O V | Z C) = \lambda \sum_{A O^{-1} V^{-1}} P(C A O O^{-1} V V^{-1} Z)$$

Sum over the possible antecedents **A** and their states (**O<sup>-1</sup> V<sup>-1</sup>**) at time t-1

The joint probability term can be re-written as follows:

$$P(C A O O^{-1} V V^{-1} Z) = P(A) P(O^{-1} V^{-1} | A) P(O V | O^{-1} V^{-1}) \\ P(C | A V) P(Z | O C)$$

But, computing this expression is difficult in practice

=> Huge range of possible antecedents

=> Strongly depends on Grid size & Velocity range

# Step 1: Occupancy Grid Construction

## *The Sensor Model*

### ❑ Sensors data

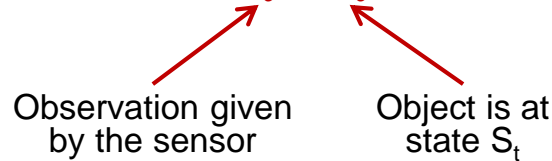
- Incomplete (objects states are only partially measurable)
- Uncertain (measures are noisy)

### ❑ The sensor model

=> Modeling the relationship between **Objects true states** and the **corresponding Observations** made by sensors

### ❑ Probabilistic representation (Thrun 2005 [1] )

=> Inverse sensor model:  $P(Z_t | S_t)$

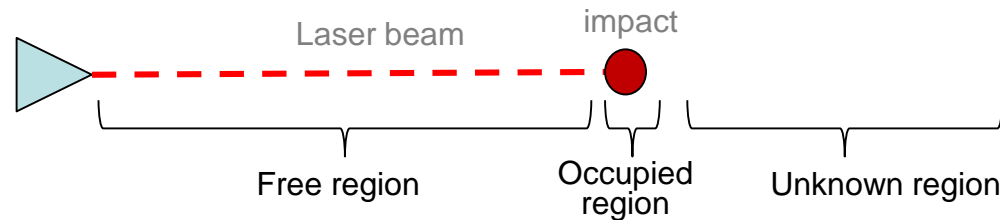


[1] Probabilistic Robotics, Thrun 2005

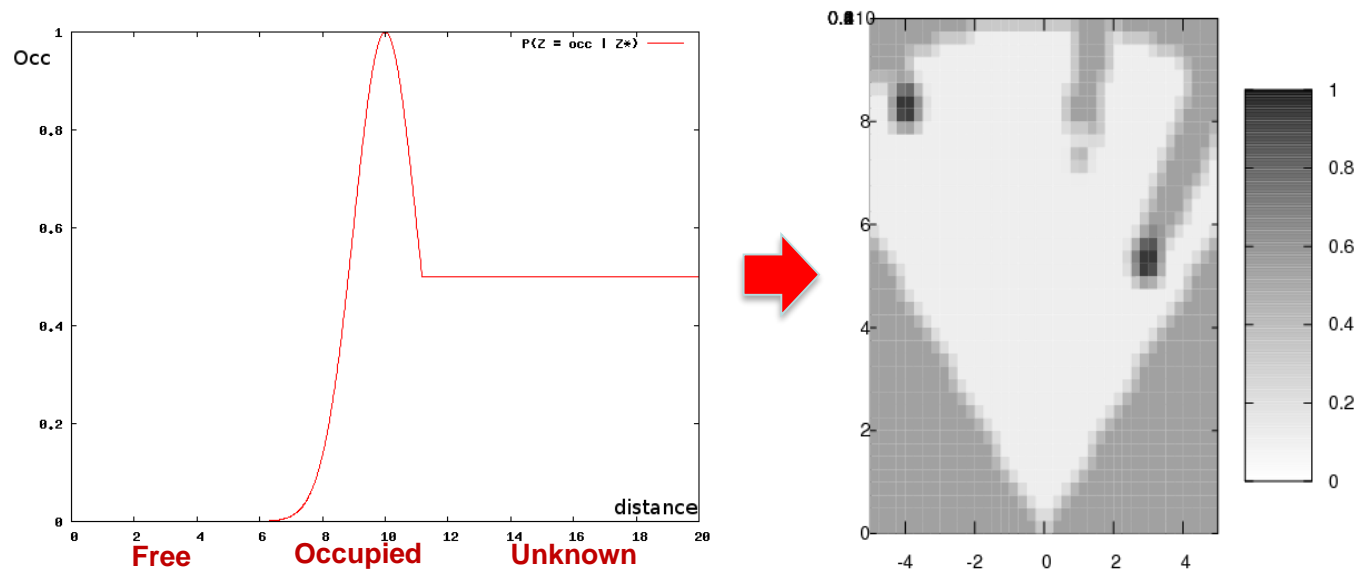


# Step 1: OG Construction – *The Lidar Sensor Model*

- **Basic idea:** A Laser beam split the space in 3 regions (Free, Occupied, unknown)

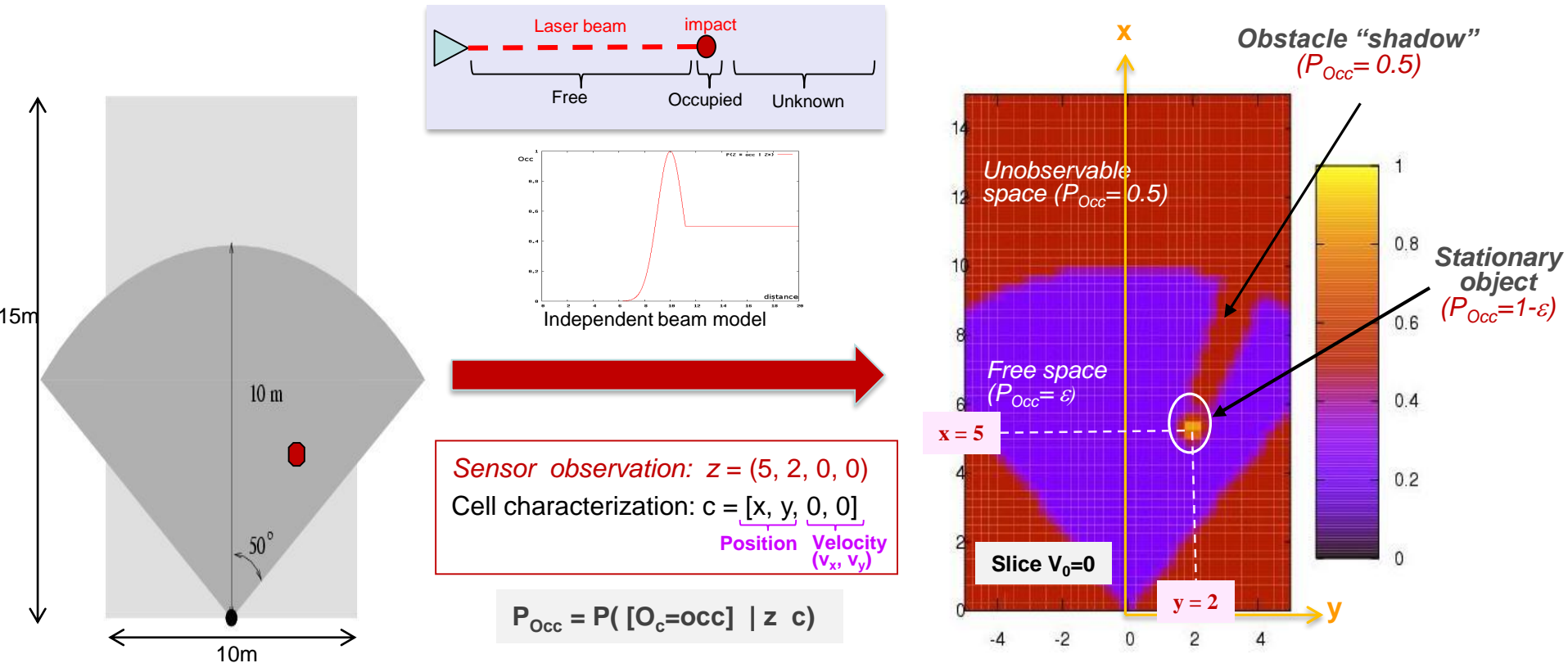


- **Probabilistic modeling:** The independent beam model



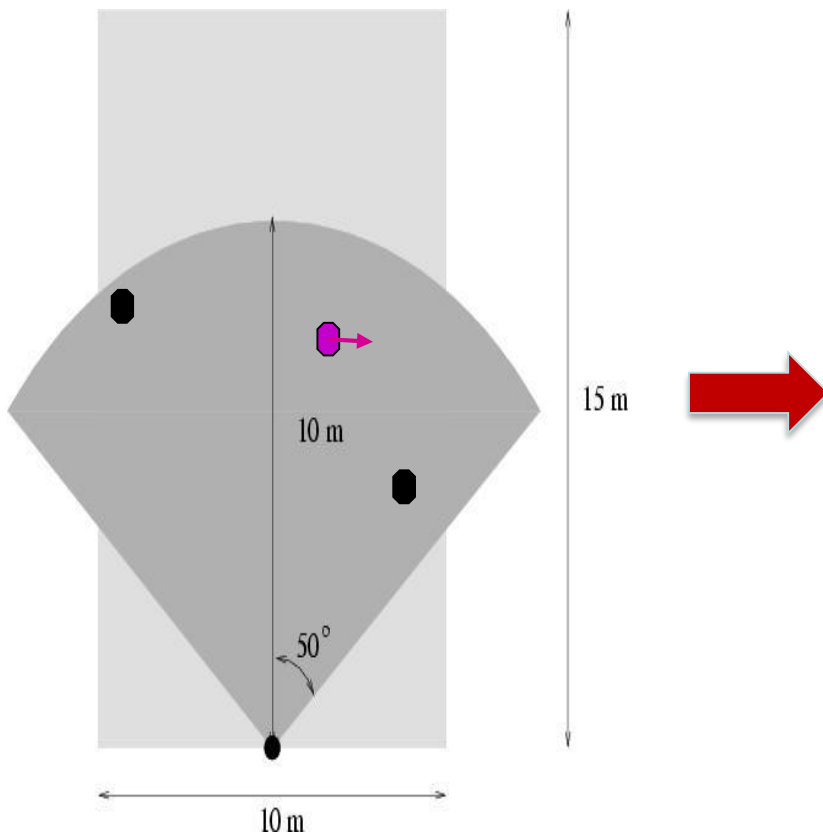
[1] Probabilistic Robotics, Thrun 2005

# Step 1: OG Construction – Example 1

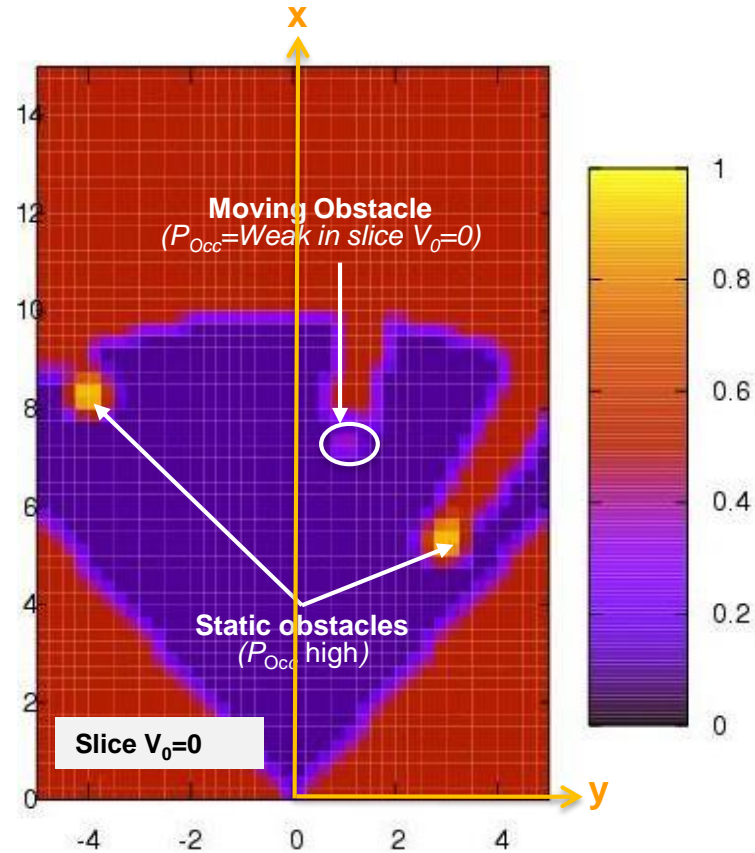


- 1 Sensor (laser scanner)
- 1 Stationary object  $\Rightarrow$  Observation  $z$

# Step 1: OG Construction – Example 2



- 1 Sensor
- 2 Stationary objects  $\Rightarrow$  Observations  $(z_1, z_3)$
- 1 Moving object  $\Rightarrow$  Observation  $z_2$



$$P_{occ} = P([O_c = occ] \mid z_1 z_2 z_3 c)$$

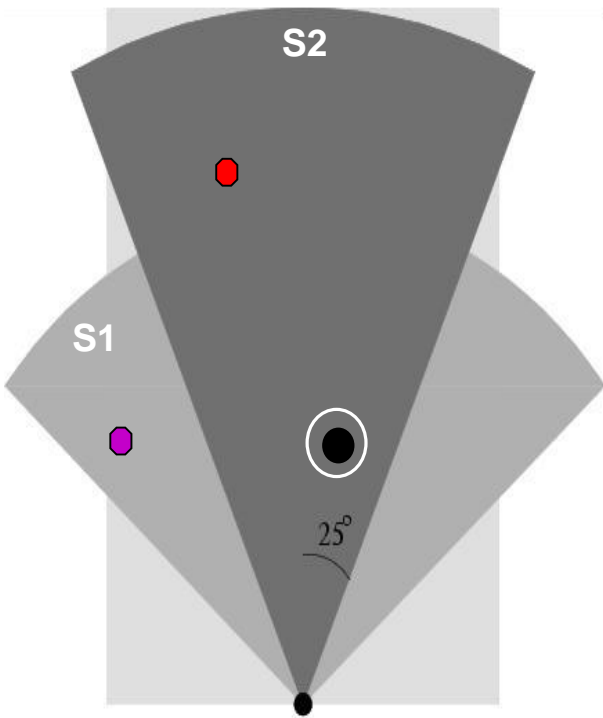
$$z_1 = (8.3, -4, 0, 0)$$

$$z_2 = (7.3, 1.9, 0, 0.8)$$

$$z_3 = (5, 3, 0, 0)$$

$$c = [x, y, 0, 0] \Rightarrow \text{in velocity slice } V_0 = 0$$

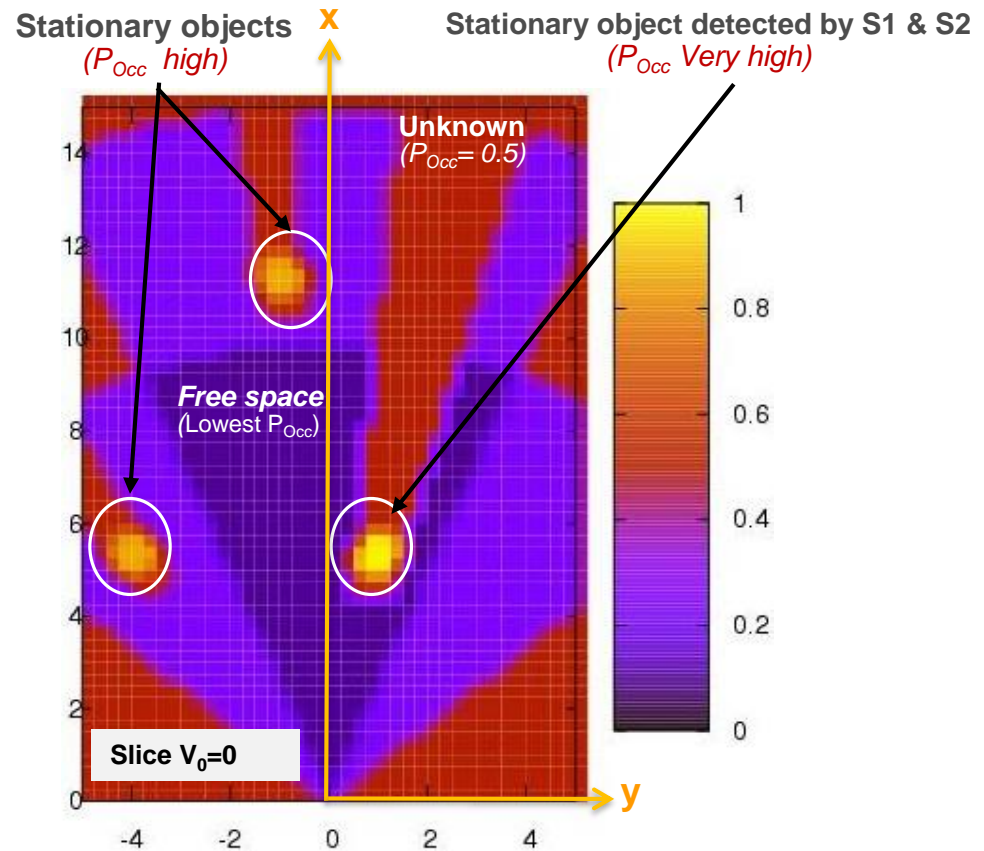
# Step 1: OG Construction – Example 3



2 Sensors (S1 & S2)

3 Stationary objects

- ⇒ Observations sensor S1:  $z_{1,1}$ ,  $z_{1,2}$
- ⇒ Observations sensor S2:  $z_{2,1}$ ,  $z_{2,2}$
- ⇒ **Black object detected by S1 & S2**



$$P_{Occ} = P([O_c = occ] \mid z_{1,1} \ z_{1,2} \ z_{2,1} \ z_{2,2} \ c)$$

$$z_{1,1} = (5.5, -4, 0, 0) \quad z_{1,2} = (5.5, 1, 0, 0)$$

$$z_{2,1} = (11, -1, 0, 0) \quad z_{2,2} = (5.4, 1.1, 0, 0)$$

$$c = [x, y, 0, 0]$$



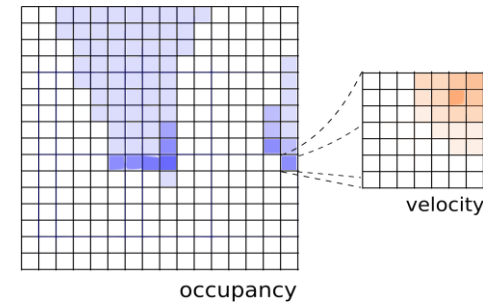
# Step 2: How to compute $P(OV | Z C)$ in practice?

*Initial approach: The classic BOF filtering process*

## ○ Initial implementation:

✓ **Regular grid**

✓ **Transition histograms** for every cell (for representing velocities)



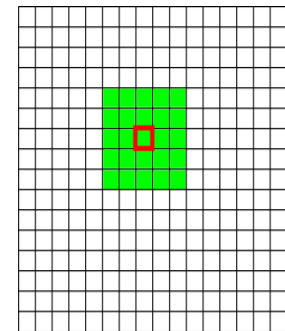
## ○ Practical computation:

$$P(OV | ZC) = \lambda \sum_{A, O^{-1}V^{-1}} P(C A O O^{-1} V V^{-1} Z)$$

Sum over the possible antecedents  $A$  and their states ( $O^{-1}V^{-1}$ )

=> Sum over the **neighborhood**, with a **single possible velocity per antecedent  $A$**  of equation:

$$P(C A O O^{-1} V V^{-1} Z) = P(A) P(O^{-1} V^{-1} | A) P(O V | O^{-1} V^{-1}) \\ P(C | A V) P(Z | O C)$$



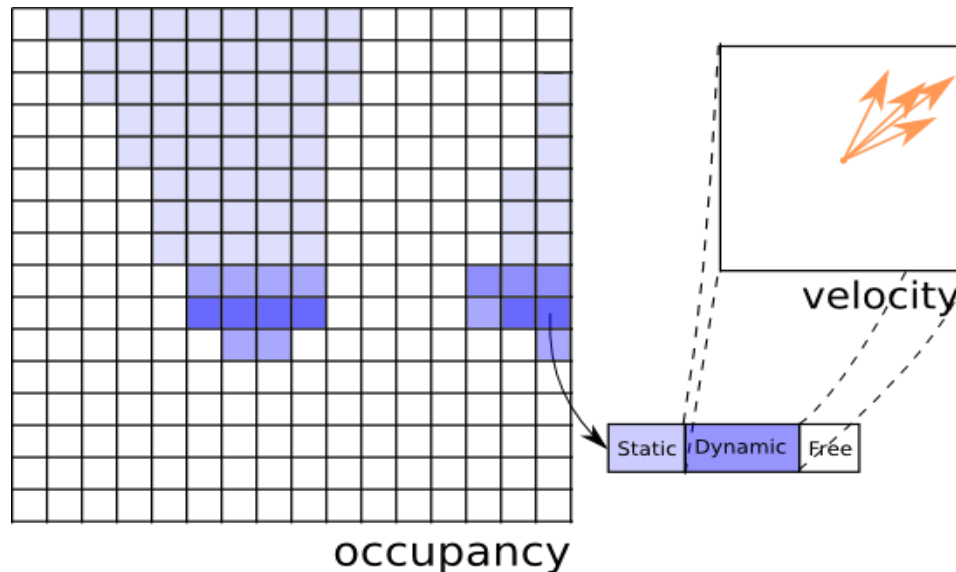
## ○ Drawbacks:

- ⇒ Large memory size required (velocity histograms large & almost empty)
- ⇒ Weak accuracy
- ⇒ Temporal & Spatial Aliasing problems

# Step 2: How to compute $P(OV | Z C)$ in practice?

*Improved approach: HSBOF updating process (principle)*

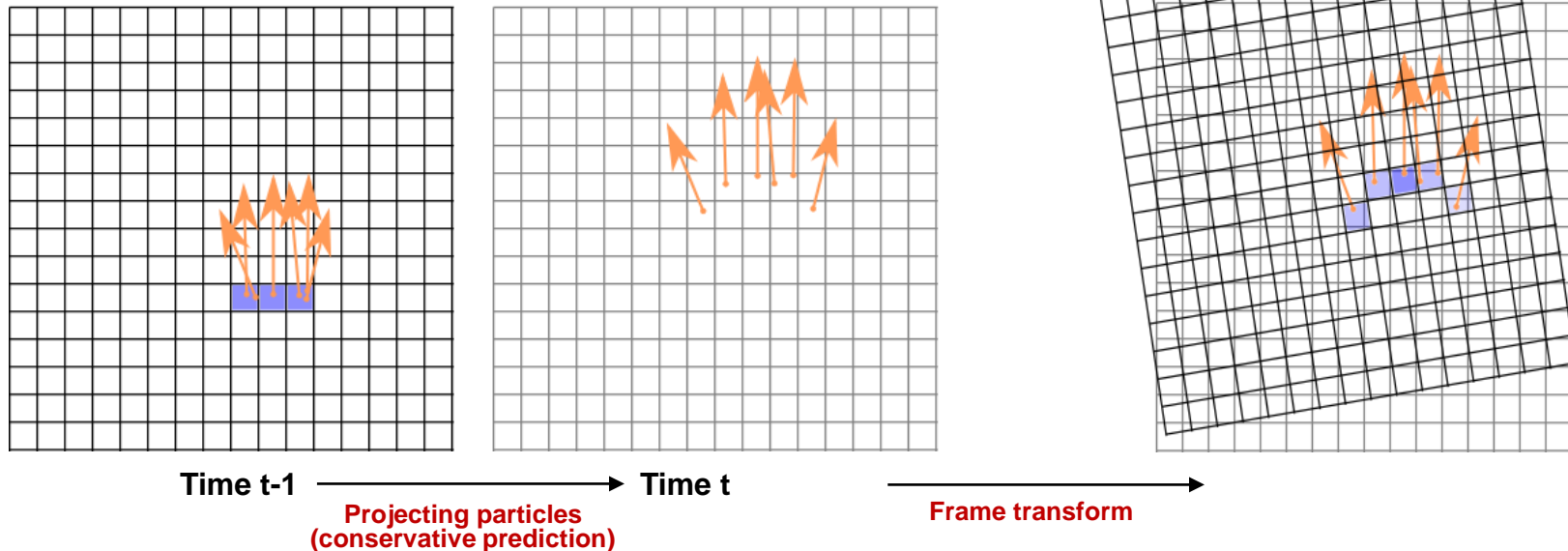
- **Basic idea:** *Modify the representation structure to avoid the previous computational problems*
  - ✓ Making a clear distinction between **Static & Dynamic & Free** components
  - ✓ Modeling velocity using **Particles** (*instead of histogram*)
  - ✓ Making an **adaptive repartition** of those particles in the grid



# Step 2: How to compute $P(OV \mid Z \ C)$ in practice?

## *Improved approach: HSBOF updating process (principle)*

- Introducing a **Dynamic model** for “projecting” particles in the grid ( $S_{t-1} \rightarrow S_t$ )
  - $\Rightarrow$  *Immediate antecedent association*
  - $\Rightarrow$  *Simplified velocity prediction to the cells*
- **Updating Grid Reference Frame** (the car & sensors are in motion)
  - $\Rightarrow$  *Translation & Rotation values **provided by sensors** (Odometry + IMU)*
  - $\Rightarrow$  *Same transform applied to the static part*



# Step 2: How to compute $P(OV | Z C)$ in practice ?

## *The HSBOF filtering calculation process*

$$P(OV | Z C) = \lambda \sum_{A O^{-1} V^{-1}} P(C A O O^{-1} V V^{-1} Z)$$

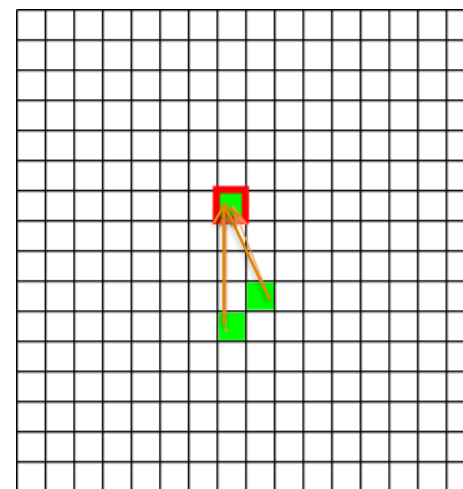
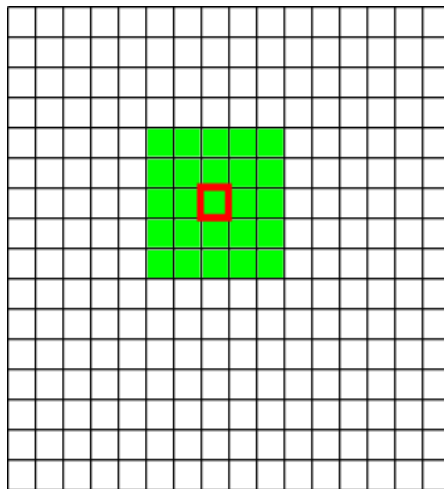
Sum over the neighborhood, with a single velocity per antecedent

**A more efficient computation approach :**

*=> Sum over the particles projected in the cell & their related static parts*

$$P(C A O O^{-1} V V^{-1} Z) = P(A) P(O^{-1} V^{-1} | A) P(O V | O^{-1} V^{-1}) \\ P(C | A V) P(Z | O C)$$

**Previous  
computation approach  
(histograms)**



**New  
computation approach  
(particles)**

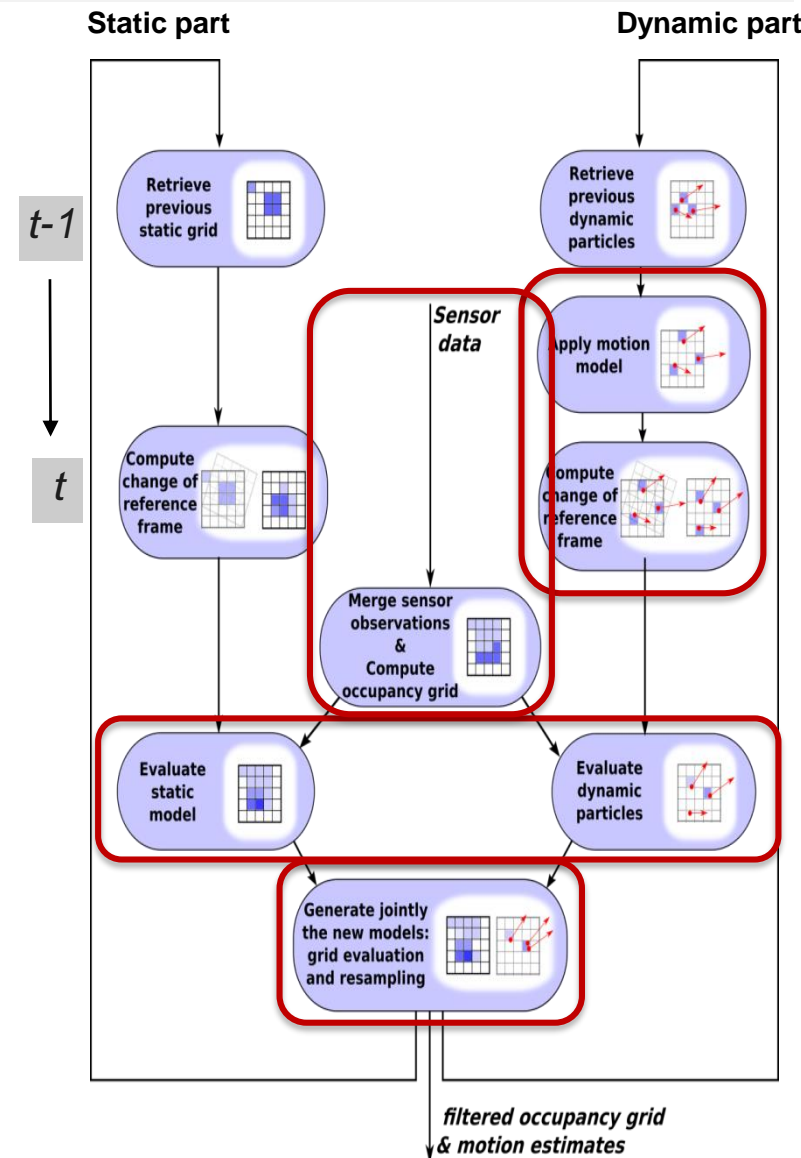


# Step 2: How to compute $P(OV | Z C)$ in practice?

## *HSBOF updating process (outline of the algorithm)*

### Main steps in the updating process

- Dynamic part (particles) is “**projected**” in the grid using motion model => *motion prediction*
- Both Dynamic & Static parts are expressed in the **new reference frame** => *moving vehicle frame*
- The two resulting representations are confronted to the **observations** => *estimation step*
- **New representations (static & dynamic)** are jointly evaluated and particles re-sampled



# Content of the Tutorial

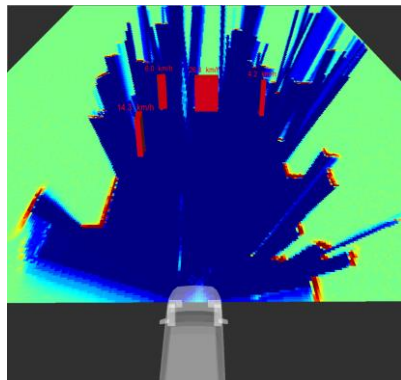
- ❑ Socio-economic & Technological Context + State of the Art
- ❑ Decisional & Control Architecture – Outline
- ❑ Bayesian Perception (*key Technology 1*)
- ❑ **Embedded Bayesian Perception & Experimental results**
- ❑ Bayesian Risk Assessment & Decision-making (*Key Technology 2*)

# Recent implementations & Improvements

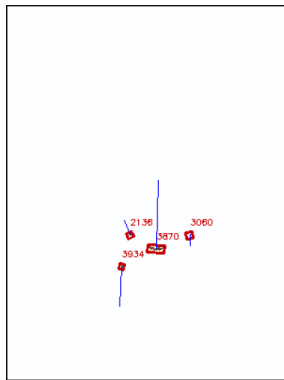


*Several implementations (models & algorithms) more and more adapted to **Embedded constraints & Scene complexity***

- ❖ Hybrid Sampling Bayesian Occupancy Filter (HSBOF, 2014) [Negre et al 14] [Rummelhard et al 14]  
=> **Drastic memory size reduction** (factor 100) + **Increased efficiency** (complex scenes)  
+ **More accurate Velocity estimation** (using Particles & Motion data from ego-vehicle )
- ❖ Conditional Monte-Carlo Dense Occupancy Tracker (CMCDOT, 2015) [Rummelhard et al 15]  
=> **Increased efficiency using “state data”** (Static, Dynamic, Empty, **Unknown**) + **Integration of a “Dense Occupancy Tracker”** (Object level, Using particles propagation & ID)
- ❖ CMCDOT + Ground Estimator (Patent 2017) [Rummelhard et al 17]  
=> **Ground shape estimation & Improve obstacle detection** (avoid false detections on the ground)



Grid & Pseudo-objects



Tracked Objects

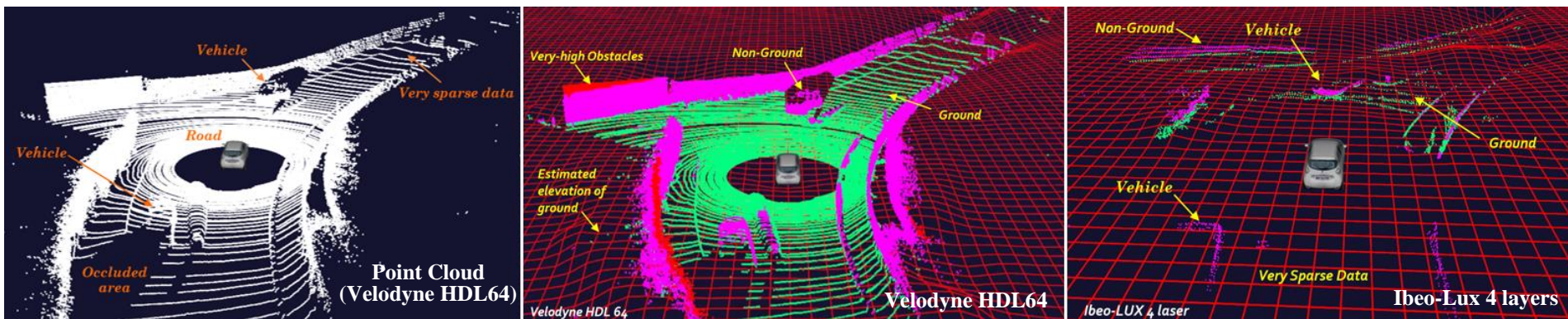


Classification (using Deep Learning)

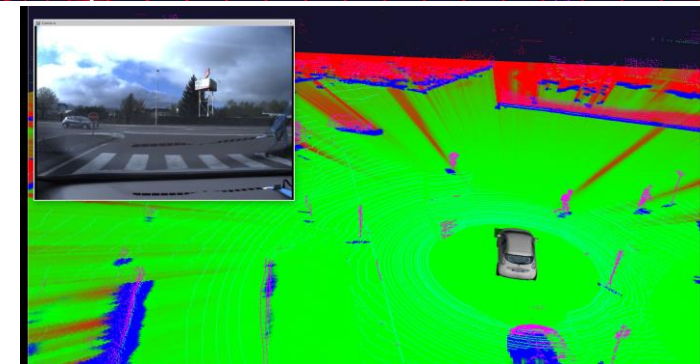
Detection & Tracking  
& Classification

# Ground Estimation & Point Cloud Classification

- ⇒ Smart OG generation taking into account the **ground shape & height of laser impacts**
- ⇒ Process properly sensors data (for OG & DATMO) & Avoid false detections on the road surface



- **Ground estimation** : 1m x 1m ground node resolution  
⇒ **ground-points in green, obstacles in pink / red**
- **Occupancy grid** : Images 0.1m x 0.1m occupancy grid resolution  
⇒ **green for free space, blue occupied, red unknown**



- ❖ Ground model constructed using a *Spatio-Temporal Conditional Random Field*, estimated through efficient parallelized process [1]
- ❖ Model accurate enough to represent rolling roads & Efficient enough for **real-time** performances on embedded devices
- ❖ The complete system (including CMCDOT) has been implemented on a Nvidia Tegra X1



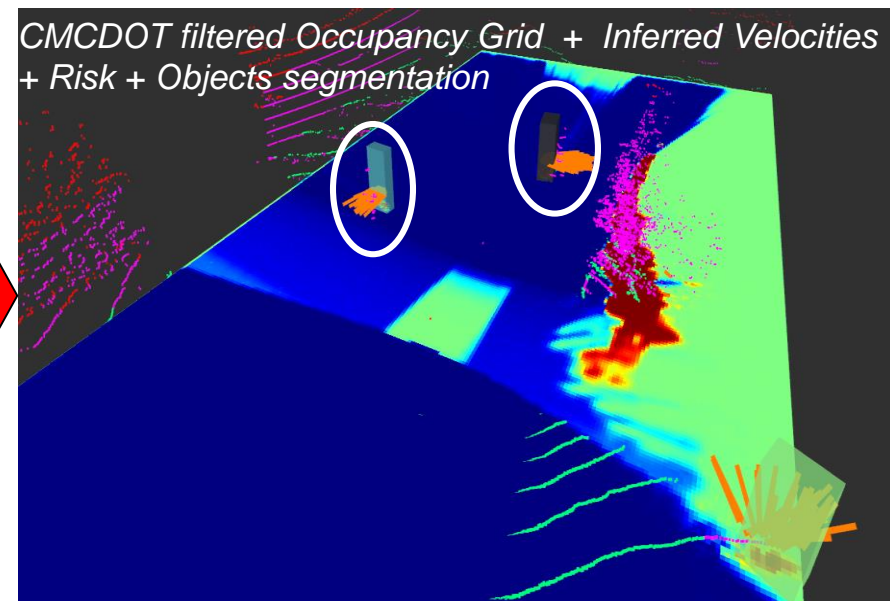
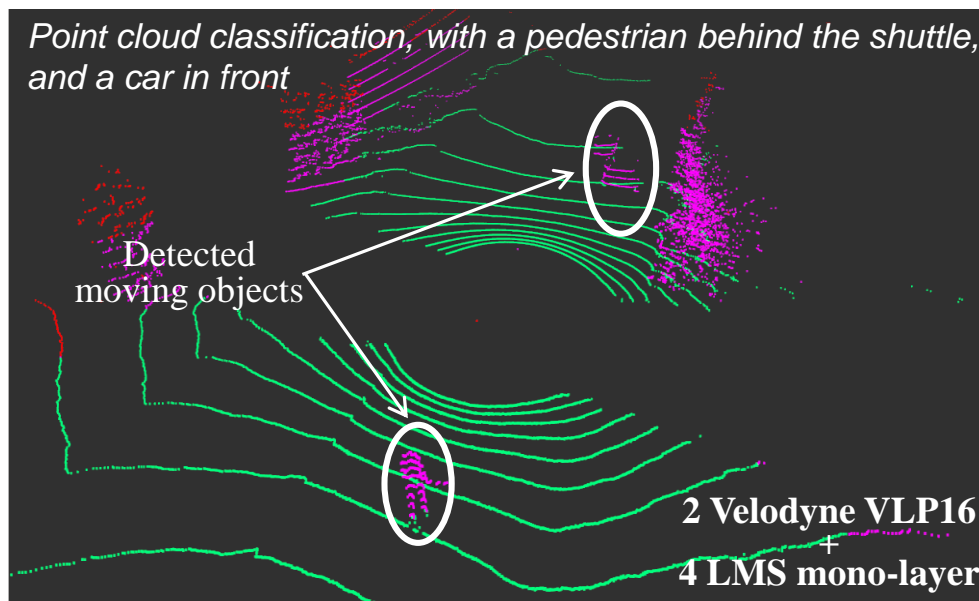
[1] Ground estimation and point cloud segmentation using spatio-temporal conditional random field, Rummelhard et al, IV 2017, Redondo Beach, June 2017



# Integration on a commercial vehicle



- **POC 2017: Complete system implemented on Nvidia TX1**, and easily connected to the shuttle system network *in a few days* (using ROS)
- **Shuttle sensor data** has been fused and processed in **real-time**, with a successful Detection & Characterization of the **Moving & Static Obstacles**
- **Full integration on a commercial product** under development with an industrial company (confidential)



# CMCDOT – *Complete process illustration*



Sensor data



# Experimental Vehicles & Connected Perception Units

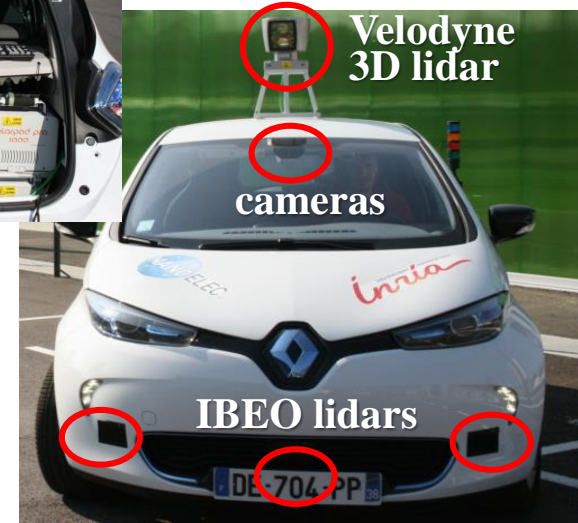
Toyota Lexus



ROS



Renault Zoé



Connected Perception Unit

=> Same embedded perception systems than in vehicles

Nvidia GTX Titan X  
Generation Maxwell



Nvidia GTX Jetson TK1  
Generation Maxwell



Nvidia GTX Jetson TX1  
Generation Maxwell



# Software / Hardware Integration – GPU implementation



- Highly parallelizable framework, **27 kernels** over cells and particles  
⇒ Occupancy, speed estimation, re-sampling, sorting, prediction
- Real-time implementation (20 Hz), optimized using Nvidia profiling tools

## Results:

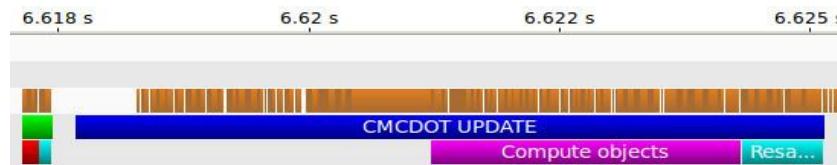
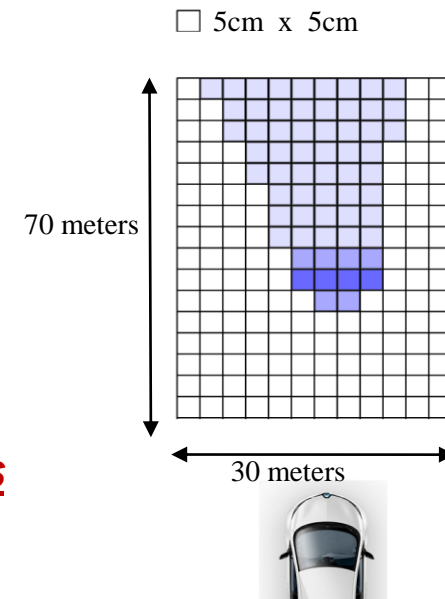
- Configuration with 8 Lidar layers (2x4)
- Grid: 1400 x 600 (840 000 cells) + Velocity samples: 65 536



⇒ Jetson TK1: *Grid Fusion 17ms, CMCDOT 70ms*



⇒ Jetson TX1: Grid Fusion 0.7ms, CMCDOT 17ms

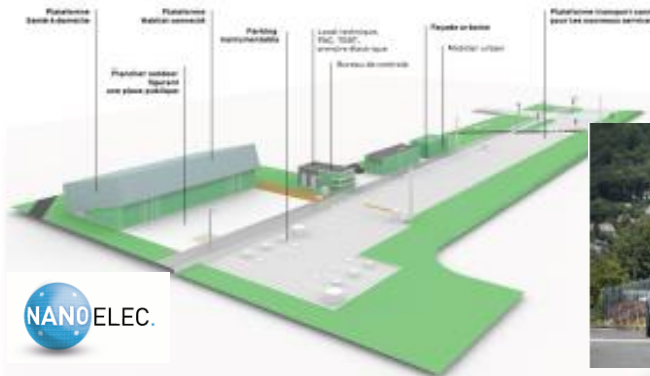




# Experimental Areas

## ❑ Protected experimental area

Un espace d'expérimentation : 3 plateformes



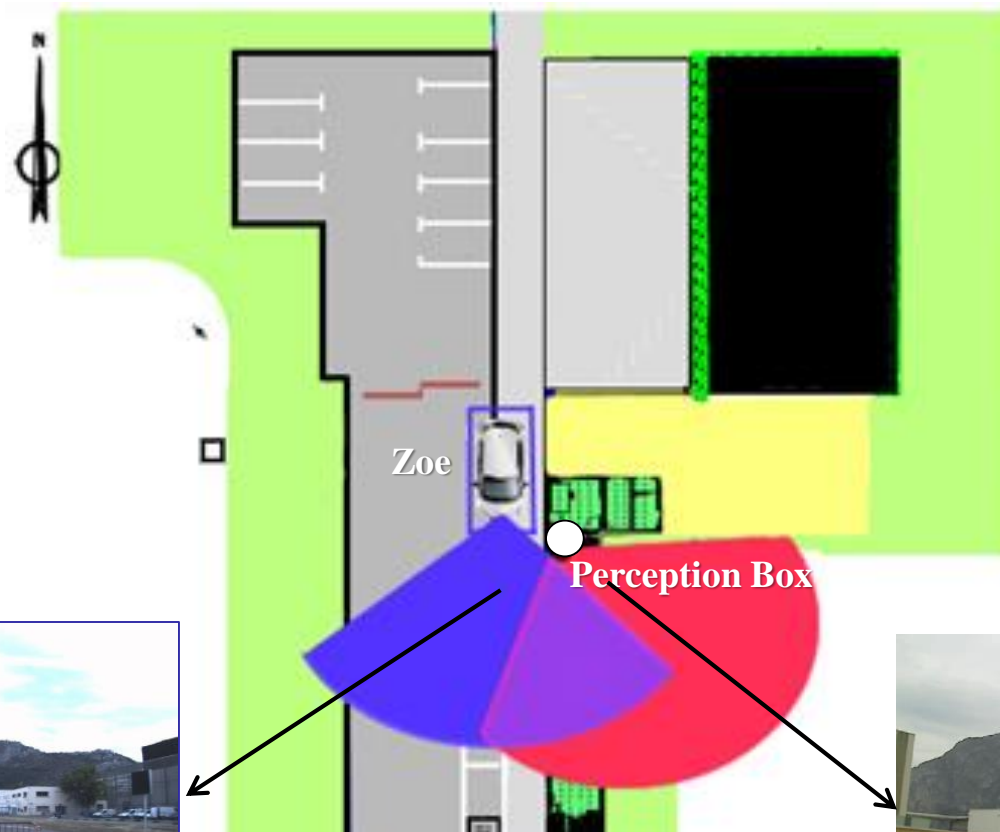
Connected  
Perception Unit



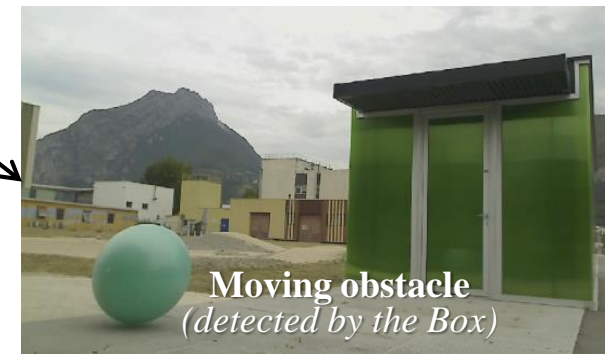
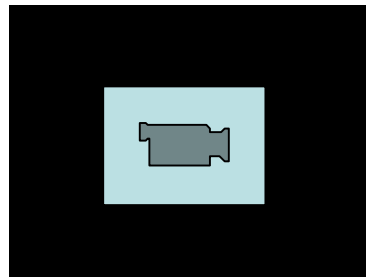
## ❑ Open real traffic (Urban & Highway)



# V2X: Distributed Perception experiment using CMCDOT



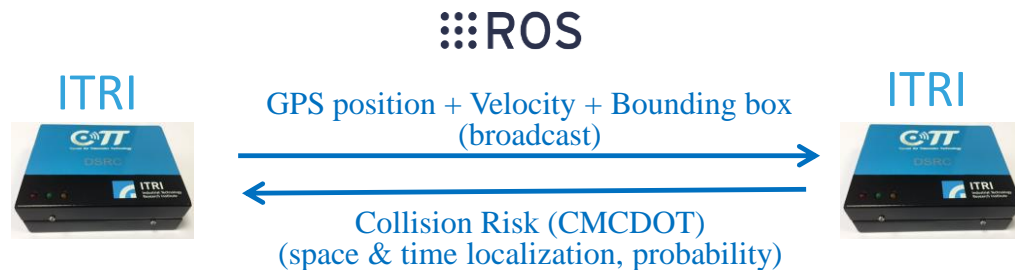
Camera Image provided by the  
Zoe vehicle



Camera Image provided by the  
Perception box

# V2X: Data exchange & Synchronization

## □ Data exchange



ITS-G5 (Standard ITS Geonetworking devices)  
Basic Transport Protocol IEEE 802.11p



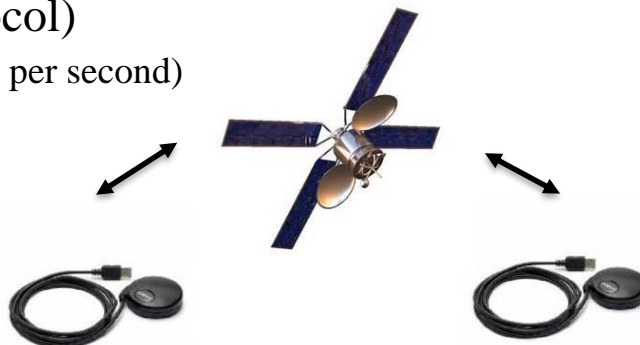
## □ Synchronization

**Chrony** (Network Time Protocol)

GPS Garmin + PPS Signal (1 pulse per second)



Serial Port



GPIO + UART



# Content of the Tutorial

- ❑ Socio-economic & Technological Context + State of the Art
- ❑ Decisional & Control Architecture – Outline => Not presented
- ❑ Bayesian Perception (*key Technology 1*)
- ❑ Embedded Bayesian Perception & Experimental results
- ❑ **Bayesian Risk Assessment & Decision-making (*Key Techno 2*)**



# Key Technology 2: Risk Assessment & Decision

=> *Decision-making for avoiding Pending & Future Collisions*



## □ Main challenges

*Uncertainty, Partial Knowledge, World changes, **Human in the loop** + **Real time***

## □ Approach: Prediction + Risk Assessment + Bayesian Decision-making

- ✓ Reason about *Uncertainty & Contextual Knowledge* (using **History & Prediction**)
- ✓ Estimate probabilistic Collision Risk at a given **time horizon**  $t+\delta$
- ✓ Make Driving Decisions by taking into account the **Predicted behavior** of all the observed surrounding traffic participants (cars, cycles, pedestrians ...) & **Social / Traffic rules**

# Underlying Conservative Prediction Capability

*=> Application to Conservative Collision Anticipation*

*[Coué & Laugier IJRR 05]*

Autonomous  
Vehicle (Cycab)

Parked Vehicle  
(occultation)



**Pioneer  
Results  
(2005)**

Thanks to the prediction capability of the BOF technology, the Autonomous Vehicle “anticipates” the behavior of the pedestrian and brakes *(even if the pedestrian is temporarily hidden by the parked vehicle)*

# Step 1: Short-term collision risk – *Main features*

=> *Grid level & Conservative motion hypotheses (proximity perception)*

## □ Main Features

- Detect “**Risky Situations**” a few seconds ahead (3-5s)
- Risky situations are **both localized in Space & Time**
  - ⇒ *Conservative Motion Prediction* in the grid (Particles & Occupancy)
  - ⇒ *Collision checking* with *Car model* (shape & velocity) for every future time steps (*horizon h*)
- Resulting information can be used for choosing **Avoidance Maneuvers**

*Proximity perception:  $d < 100m$  and  $t < 5s$*

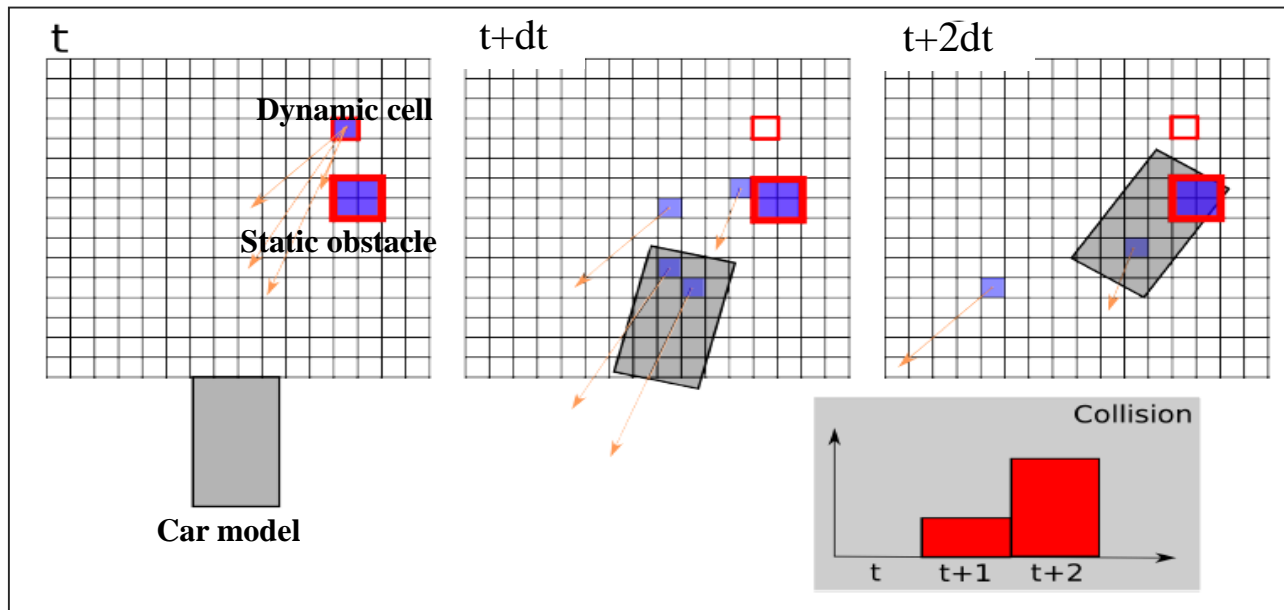
$\delta = 0.5s$  => *Precrash*

$\delta = 1s$  => *Collision mitigation*

$\delta > 1.5s$  => *Warning / Emergency Braking*

## □ Collision Risk Estimation: *Integration of risk over a time range $[t \ t+\delta]$*

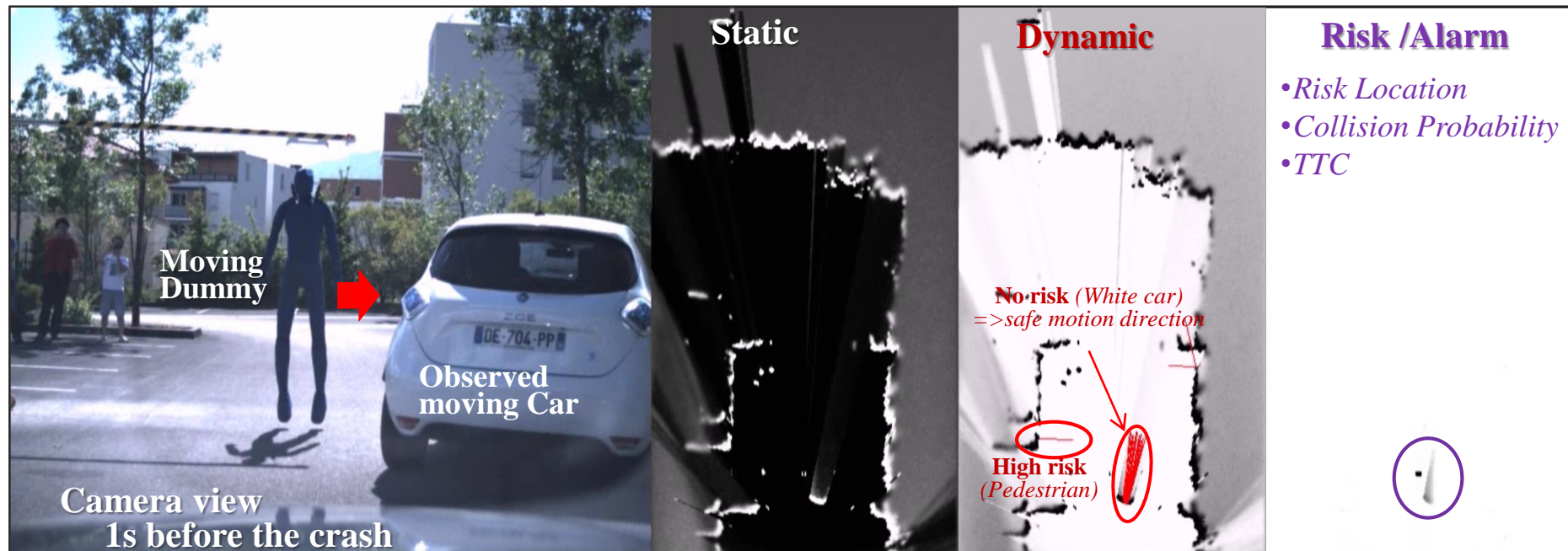
=> *Projecting over time the estimated Scene changes (DP-Grid) & Car Model (Shape + Motion)*





# Short-term collision risk – System outputs (real-time)

=> *Static & Dynamic grids + Risk assessment*



○ **FAQ :** What happen if some velocities change after that the collision risk for the next 3s has been evaluated ?

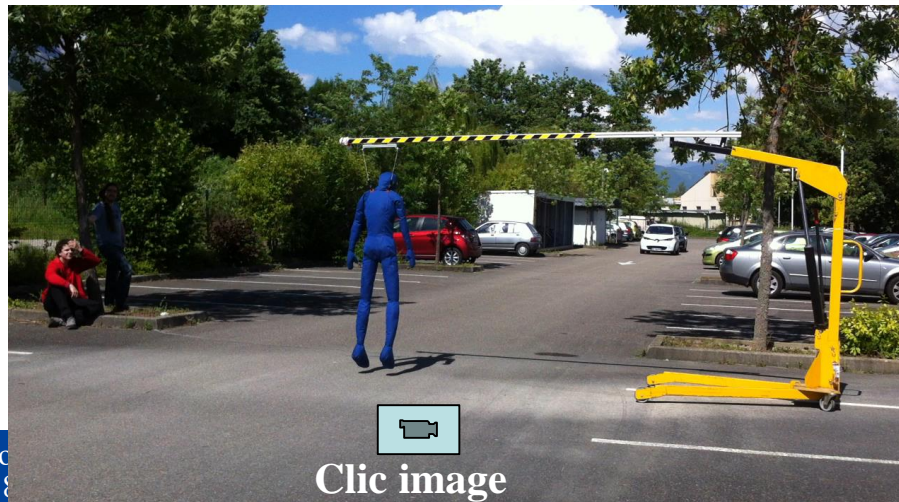
○ **Answer:** The collision risk is recomputed at the next time step (i.e max 40ms after the change of dynamics).



# Short-term collision risk – *Experimental results*

⇒ Detect potential upcoming collisions

⇒ Reduce drastically false alarms



Crash test with no automatic breaking



Sensor data



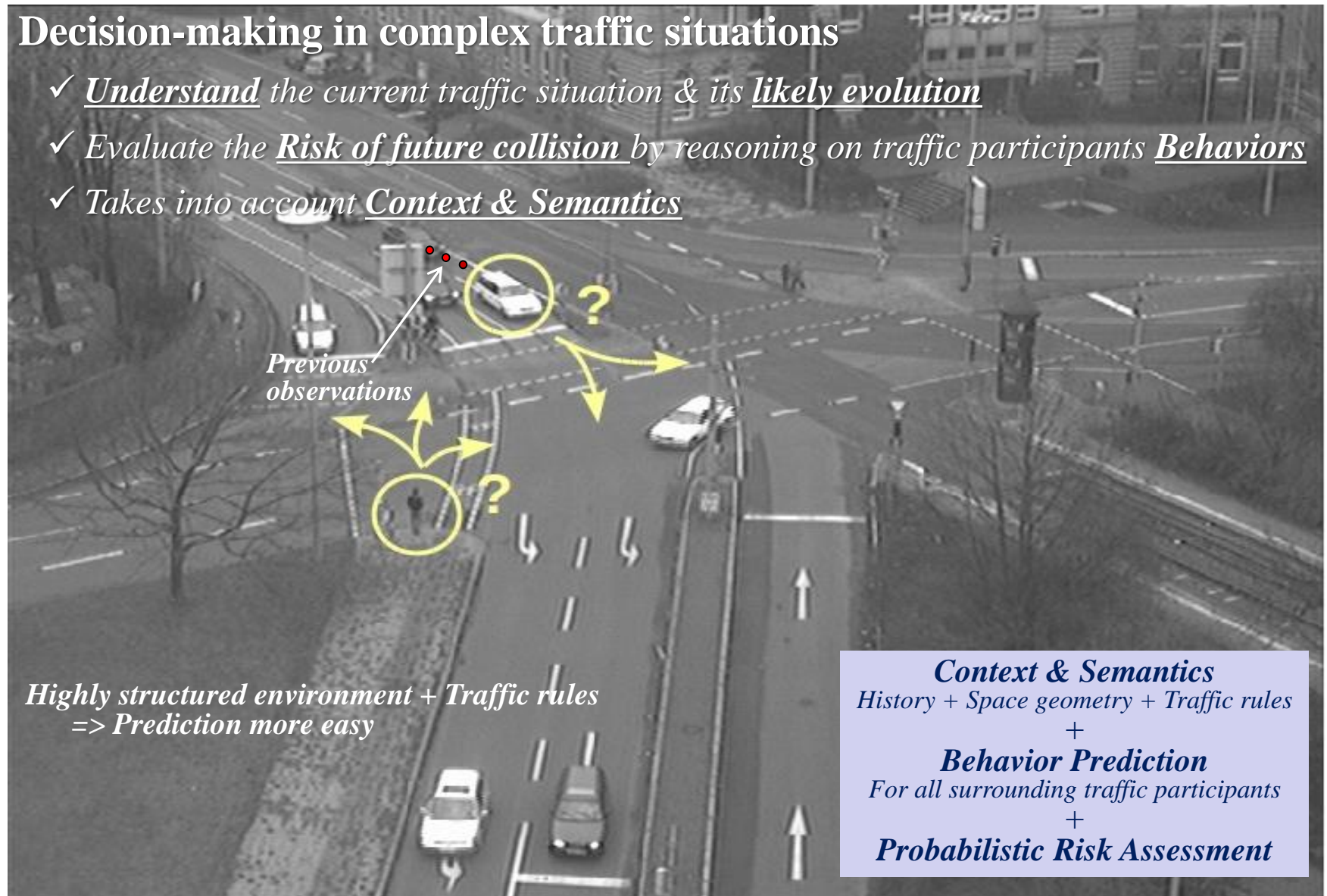


# Step 2: Generalized Risk Assessment (Object level)

- => Increasing time horizon & complexity using context & semantics
- => Key concept: **Behaviors Modeling & Prediction**

## Decision-making in complex traffic situations

- ✓ Understand the current traffic situation & its likely evolution
- ✓ Evaluate the Risk of future collision by reasoning on traffic participants Behaviors
- ✓ Takes into account Context & Semantics



*Highly structured environment + Traffic rules  
=> Prediction more easy*

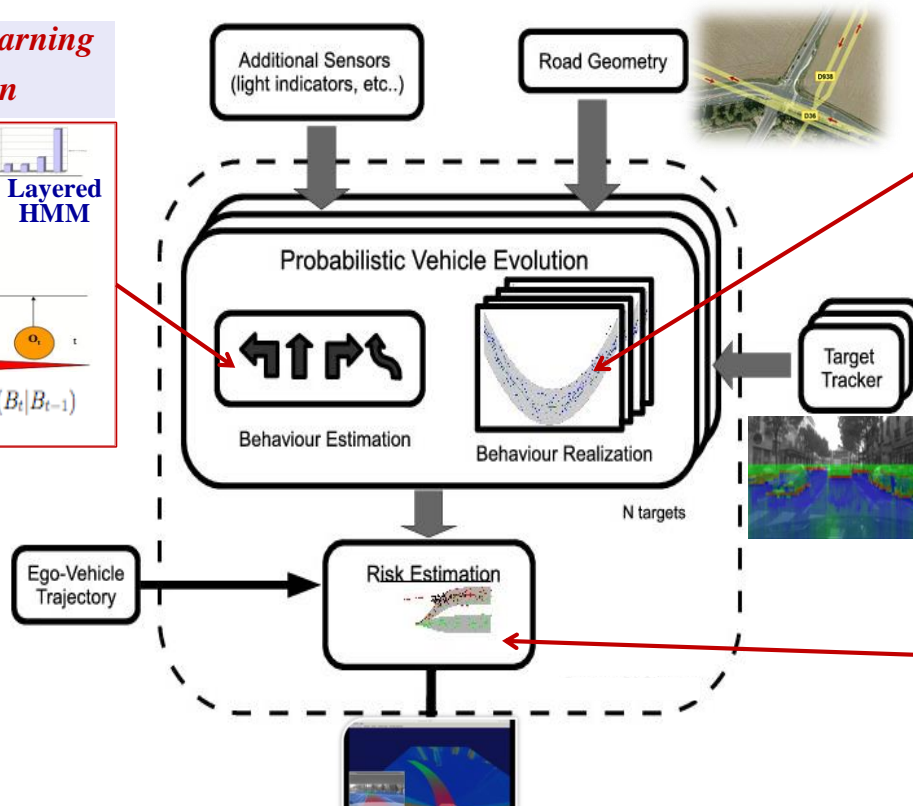
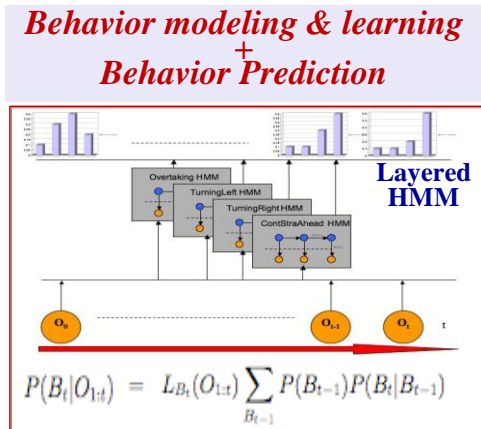
**Context & Semantics**  
History + Space geometry + Traffic rules  
+  
**Behavior Prediction**  
For all surrounding traffic participants  
+  
**Probabilistic Risk Assessment**

# Behavior-based Collision risk (*Object level*)

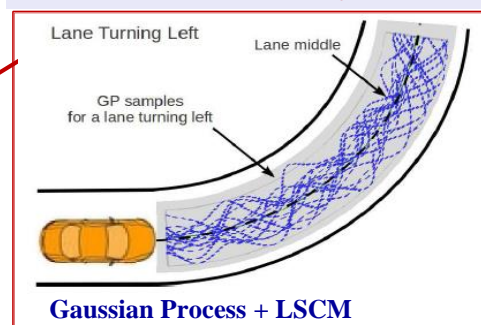
=> Increasing time horizon & complexity + Reasoning on Behaviors

## Approach 1: Trajectory prediction & Collision Risk Assessment

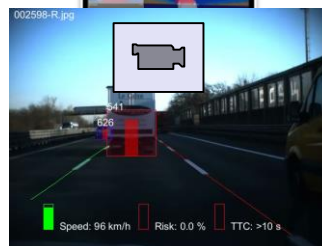
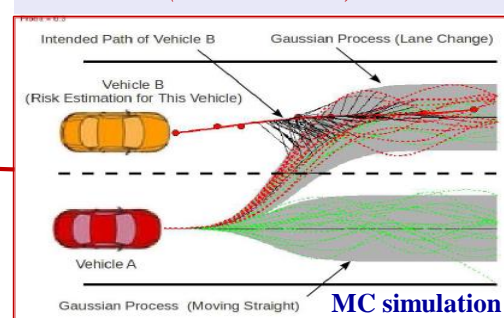
Patent Inria & Toyota & Probayes 2010 + [Tay thesis 09] [Laugier et al 11]



### From behaviors to trajectories



### Collision risk assessment (Probabilistic)



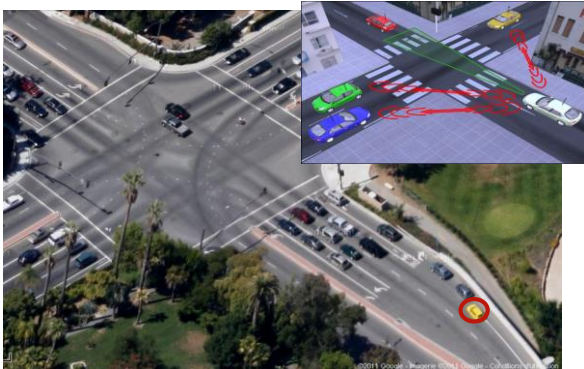


# Behavior-based Collision risk (*Object level*)

=> *Increasing time horizon & complexity + Reasoning on Behaviors*

## Approach 2: Intention & Expectation comparison

=> *Complex scenarios with **Interdependent Behaviors & Human Drivers***



[Lefevre thesis 13] [Lefevre & Laugier IV'12, Best student paper]

Patent Inria & Renault 2012 (risk assessment at road intersection)

Patent Inria & Berkeley 2013 (postponing decisions for safer results)



## A Human-like reasoning paradigm => *Detect Drivers Errors & Colliding behaviors*

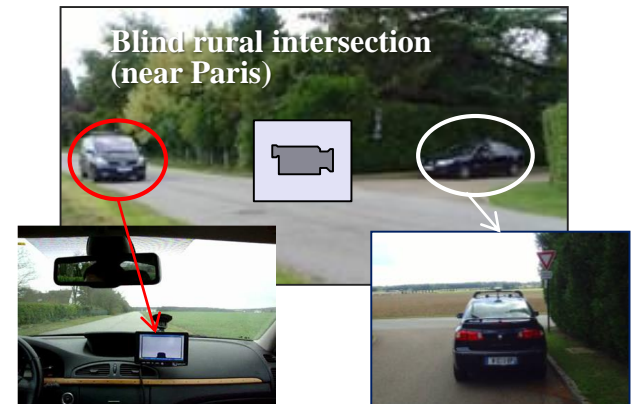
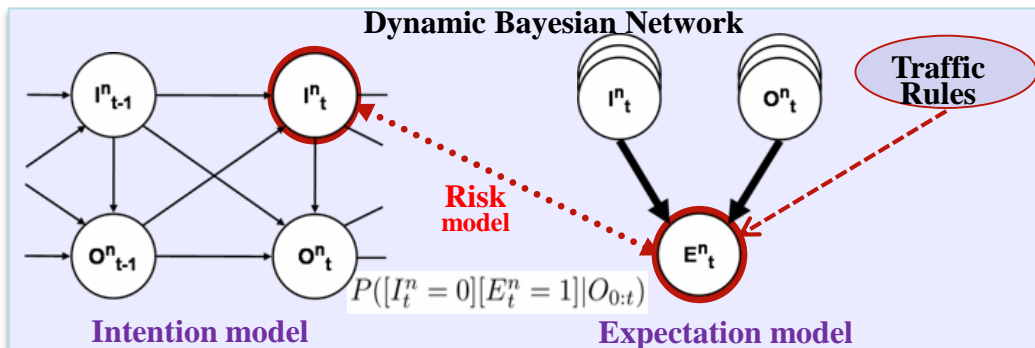
✓ Estimating “*Drivers Intentions*” from Vehicles States Observations ( $X \ Y \ \theta \ S \ TS$ ) => Perception or V2V

✓ Inferring “*Behaviors Expectations*” from Drivers Intentions & Traffic rules

✓ **Risk** = Comparing Maneuvers *Intention & Expectation*

=> Taking **traffic context** into account (Topology, Geometry, Priority rules, Vehicles states)

=> **Digital map** obtained using “Open Street Map”



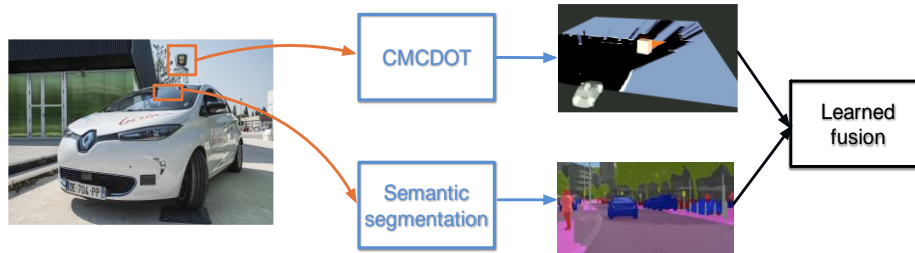
# Current & Future work

## □ New models/algos for integration in various platforms & dynamics

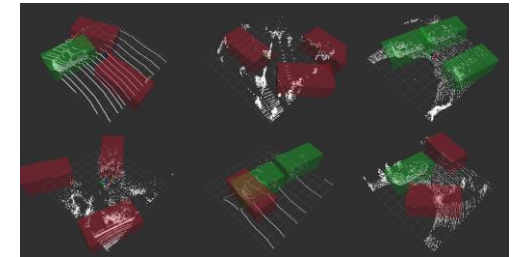


Integration within the Control Units of EasyMile EZ10 shuttle & Iveco bus & Renault Zoe

## □ News approaches & models for constructing “semantic grids” using CNN

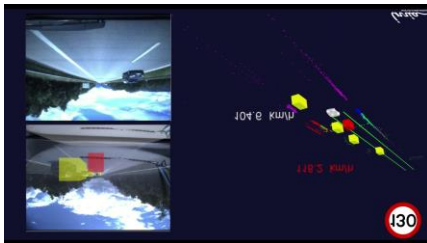


Fusing CMCDOT output (OG) with semantic output from RGB cameras (coop Toyota)  
=> *Patent application & Publications (IROS 2018 & ICARCV 2018)*

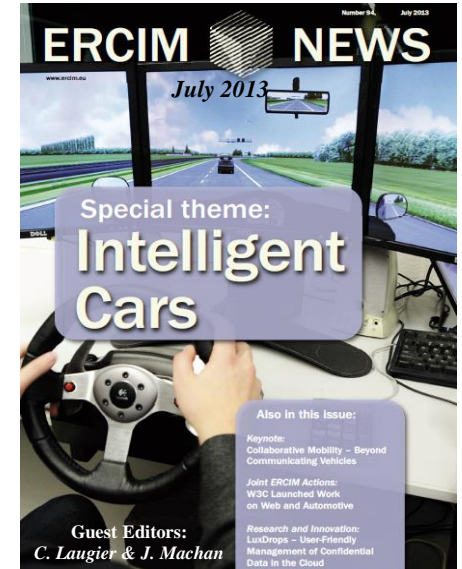
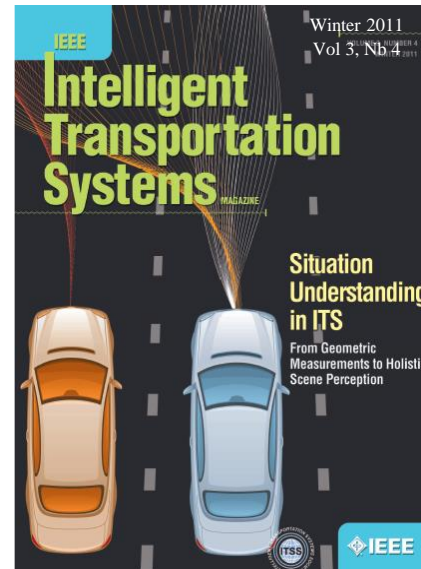
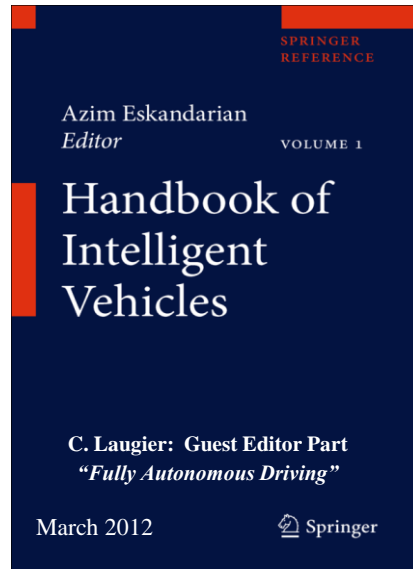


Semantic segmentation in a 3D point cloud  
=> *Master Thesis*

## □ Learning & Predicting driving Behaviors for Autonomous Driving



- Driver behavior modeling using Inverse Reinforcement Learning
  - Combining Model-based prediction with Dynamic evidence to estimate lane change intentions
- => *2 Patents application & publications (ITSC 2016, ICRA 2017, ICRA 2018)*



**Thank You  Any questions ?**

